

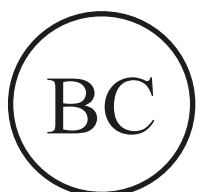
Register your product and get support at
www.philips.com/welcome

PicoPix

PPX4935



EN User Manual



PHILIPS

Table of Contents

Overview	1	Inserting a Memory Card	16	
Welcome	1	Connecting an USB Storage Device	16	
About this User's Manual	1	Connect to a Computer (USB)	17	
What's in the box	1	6 Internet Connection, Wireless Network (WIFI)	18	
Product highlights	2	Switching Wireless Networking (WiFi) on/off ...	18	
1 General Safety Information	3	Setting up a Wireless Network (WiFi)	18	
Setting up the Device	3	Setting up a Wireless Network (WiFi) using the	Wizard	19
Automatic Temperature Control	3	Wifi Hotspot	19	
Repairs	4	Activating WiFi Hotspot	19	
Wireless Network (WIFI)	4	Setting up a WiFi Hotspot	19	
Dolby Digital	4	DLNA (Digital Living Network Alliance)	20	
Power Supply	4	Switching DLNA on and off	20	
2 Overview	5	Play Media Using DLNA	20	
Touchpad	6	7 Bluetooth	21	
Supported Gestures	6	Activate Bluetooth	21	
Virtual On-Screen Keyboard	7	Set up Bluetooth Parameters	21	
Remote Control	8	8 Media Playback	22	
Overview of the Main Menu	9	Media Folder	22	
Overview of the Options Menu	9	How to Navigate in the Media Folder	22	
3 Initial Operation	10	Picture viewer, Slideshow	23	
Setting up the Device	10	Music Playback	23	
Connect Power Supply / Charge Battery	10	File Operations in the Media Folder	23	
Installing or Changing the Batteries of the Remote	Control	9 Web Browser	25	
Using the Remote Control	11	10 Android / APPs	26	
Initial Setup	12	Starting installed Android Apps	26	
Turning off the Projector	12	Exiting Android	26	
Standby Mode	12	Installing Android-Apps	26	
Indication of different POWER button LED color	11 Settings	27	
.....	12	Overview of the Menu Functions	27	
4 Connect to various Playback Devices	13	12 Service	29	
Connecting to Devices with HDMI Output	13	Care Instructions for the Battery	29	
Connecting to an iPhone/iPad/iPod	13	Charge the Device	29	
Connecting to an Android Smartphone or Tablet	via MHL cable	Cleaning	29	
.....	14	Troubleshooting	30	
Screen Mirroring – Connect Phones or Tablets	wirelessly to share its contents	13 Appendix	32	
.....	14	Technical Data	32	
Connecting Headphones or external Speakers	(cable connection)	Accessories	32	
.....	15			
5 Memory	16			

Overview

Welcome

Dear valued customer, thank you for your great decision to purchase this PicoPix pocket projector. We hope you have as much fun using it as we did creating it!

About this User's Manual

This manual is designed to let you easily find the information you need to get the most out from your pocket projector.

There is no need to read the manual from the beginning to end. But we suggest that you read the chapter's "overview" and "initial operation" as these will give you a first overview how to operate the projector

Follow all safety instructions in order to ensure proper operation of your device.

The manufacturer accepts no liability if these instructions are not followed.

Symbols Used



Troubleshooting

Tips and tricks that will help you to use your device more effectively and easily.

CAUTION!



Damage to the device or loss of data!

This symbol gives warning of damage to the device and possible loss of data.

DANGER!

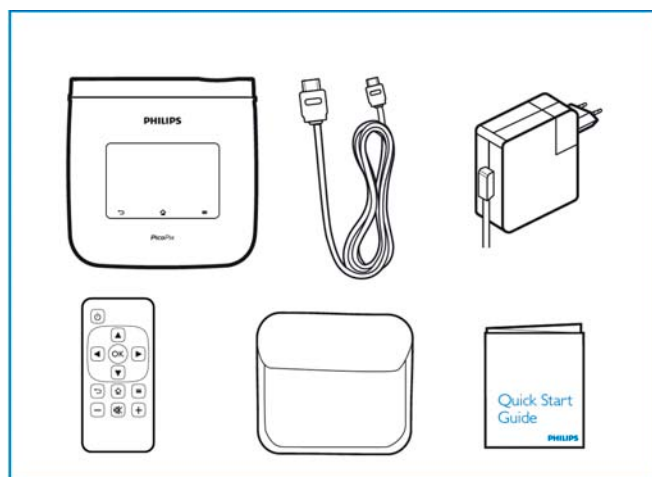


Danger to persons!

This symbol gives warning of danger to persons. Physical injury or damage can result from improper handling.

What's in the box

- 1—PicoPix Projector
- 2—HDMI cable
- 3—Power supply
- 4—Remote control
- 5—Pouch
- 6—Quick start guide



Product highlights

Smart Engine LED technology

- HD resolution (720p)
- Amazing 350 lumens brightness
- Keystone correction
- Texas Instruments DLP® IntelliBright™ technology which intelligently boosts image brightness, resulting in brighter, more dynamic images.

Built-in 3W power speaker

- brilliant sound with deep bass performance
- 6 Equalizer settings for perfect sound

Bluetooth audio-out with aptX®

- aptX® Low Latency audio codec ensures high audio quality and wireless audio/video synchronization

Wired connectivity

- HDMI connector for all kind of input devices
- MHL support to share content from your Smartphone or Tablet
- Headphone connector for external speaker or headphones
- High power USB to connect external USB and HDD drives

Wireless connectivity

- WIFI b/g/n to easily connect to private or public WIFI networks
- DLNA support to access media files stored on network drives
- WiFiDisplay (Miracast compatible) to wirelessly share content of your Smartphone or Tablet
- Built-in web-browser to share or play internet contents

Multimedia player

- Supports all widely used picture, audio and video formats
- Micro SD support to have all your media contents always available

Built-in touchpad

- Multi-touch support for easy navigation
- Pinch & zoom support for pictures and websites

1 General Safety Information

Do not make any changes or settings that are not described in this user manual. Physical injury or damage to the device or loss of data can result from improper handling. Take note of all warning and safety notes indicated.

Setting up the Device

The unit is for indoor use only. The device should be placed securely on a stable, flat surface. Position all cables in such a way that no one will stumble on them, thus avoiding possible injuries to persons or damage to the device itself.

Do not plug in the device in moist rooms. Never touch the mains cable or the mains connection with wet hands.

The device must have sufficient ventilation and may not be covered. Do not put your device in closed cabinets or boxes.

Do not place the machine on soft surfaces such as tablecloth or carpets and do not cover the ventilation slits. Otherwise the device could overheat or catch fire.

Protect the device against direct sunlight, heat, large temperature fluctuations and moisture. Do not place the device in the vicinity of heaters or air conditioners. Observe the information on temperature and humidity in the technical data.

Do not allow liquids to enter into the device. Switch off the device and disconnect it from the mains supply if liquids or foreign substances end up inside the device. Have the unit inspected by a technical service department.

Always handle the unit with care. Avoid touching the lens. Never place heavy or sharp objects on the projector or the power cable.

If the projector gets too hot or emits smoke, shut it down immediately and unplug the power cable. Arrange for your device to be investigated by a technical service centre. To prevent the spread of fire, open flames should be kept away from the device.

Under the following conditions a layer of moisture can appear inside the device which can lead to malfunctions:

- if the device is moved from a cold to a warm area
- after a cold room is heated
- when this device is placed in a damp room.

Proceed as follows to avoid any moisture build-up:

1. Seal this device in a plastic bag before moving it to another room, in order for it to adapt to room conditions.
2. Wait one to two hours before you take the device out of the plastic bag.

The device should not be used in a very dusty environment. Dust particles and other foreign objects may damage the unit.

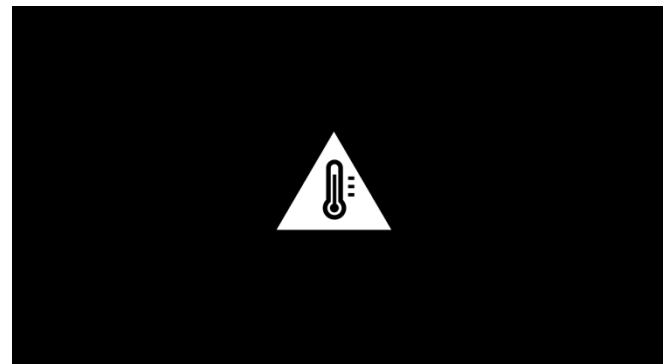
Do not expose the device to extreme vibrations as internal components may get damaged.

Do not allow children to handle the device without supervision. The packing materials should be kept out of the hands of children.

Automatic Temperature

Control

This device includes an automatic thermal management controller. If the internal temperature gets too hot, the fan speed will automatically increase (noise increase), if the temperature still continues to grow, the brightness of your product will decrease and finally the current symbol will appear.



The product will automatically switch off the display after displaying this message during 5s. This kind of behavior should not arrive except if the outside temperature is very high (>35°C).

Repairs

Do not repair the device yourself. Improper maintenance can result in injuries or damage to the device. Your device must be repaired by an authorized service center. Find details of authorized service centers on the warranty card. Do not remove the type label from the device as this would void the warranty.

Wireless Network (WIFI)

The function of security systems, medical equipment or sensitive devices can be disrupted by the transmission power of the device. Observe any usage regulations (or restrictions) in the vicinity of such equipment.

The use of this device can affect the operation of insufficiently shielded medical devices and hearing aids and pacemakers through the release of high frequency radiation. Also consult a doctor or the manufacturer of the medical device to establish whether these are sufficiently shielded from external high frequency radiation.

Dolby Digital

Manufactured under license from Dolby Laboratories. Dolby and the double-D symbol are trademarks of Dolby Laboratories.

Power Supply

Use only the enclosed power adapter (see chapter Appendix / Technical Data). Check whether the mains voltage of the power supply matches the mains voltage available at the setup location. This equipment complies with the voltage type specified on the unit. The capacity of the battery diminishes with time. If the device functions only with the power supply contact an authorized service center to replace the battery.

Do not try to replace the battery yourself. Incorrect handling of the battery or using the wrong type of battery can cause damage to the device or cause injury.

DANGER!



Risk of explosion with incorrect type of batteries

Do not try to replace the battery yourself as there is a risk of explosion if the incorrect battery type is used.

Switch the device on or off using the power switch before removing the power supply from the socket.

Turn off the device and remove it from the power supply before cleaning the surface. Use a soft, lint-free cloth. Never use liquid, gaseous or easily flammable cleansers (sprays, abrasives, polishes, alcohol). Do not allow any moisture to reach the interior of the device.

DANGER!



High Power LED

This device is equipped with a high power LED (Light Emitting Diode), which emits very bright light. Possible hazardous optical radiation emitted from this device. Do not stare at operating light source. May be harmful to the eyes.

DANGER!

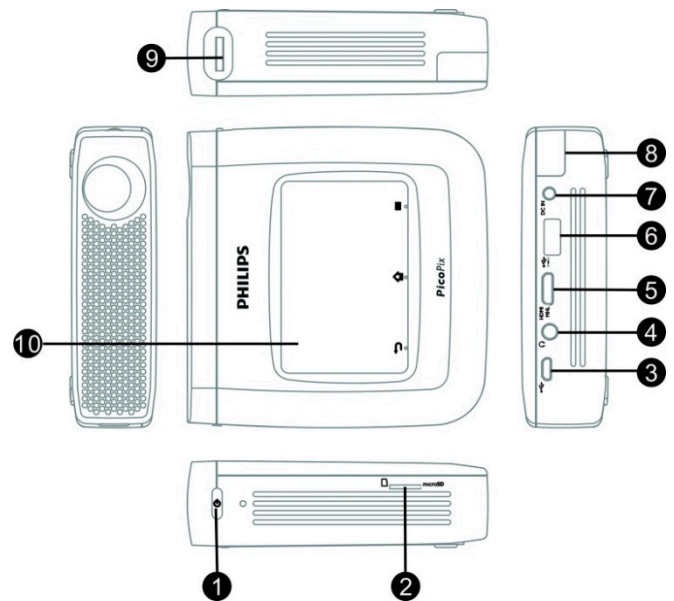


Danger of hearing damage

Do not use the device over a longer time at high volume - especially when using headphones.

2 Overview

- ①—POWER button (hold for 3s to switch on or off)
- ②—Micro-SD card slot
- ③—Micro-USB port to connect to a computer (data exchange) or to connect external devices like mouse or keyboard via an OTG cable
- ④—Audio output - headphone connection or connection for external speakers
- ⑤—HDMI - HDMI port for a playback device
- ⑥—USB port for a USB storage medium, mouse or keyboard
- ⑦—DC-IN - Power supply port
- ⑧—Remote control signal receiver window
- ⑨—Focus wheel to adjust image sharpness
- ⑩—Touchpad for navigation and operation of the PicoPix without remote control



Notice

Note that the distance to the projection surface must be a minimum of 0.5 meters and a maximum of 5 meters. If the Pocket Projector is located outside of this range, it will not be possible to focus the image. Turn the focus wheel carefully to avoid damage to the lens.

Touchpad

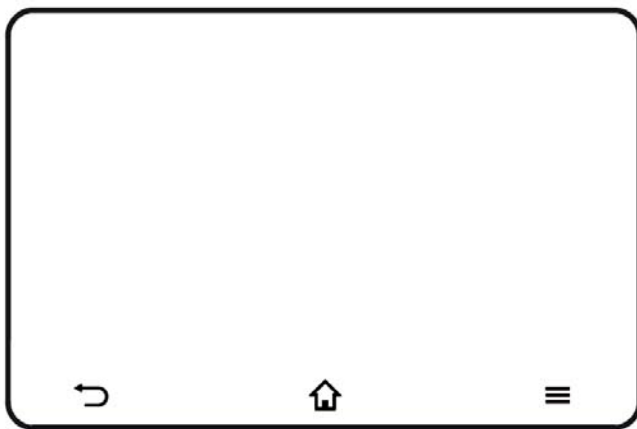
The touchpad is a touch-sensitive surface. Touch the touchpad with one or more fingers to move the cursor, navigate in the menu, select menu options or carry out other actions.


CAUTION!




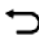
Ballpoint pen!

Do not use a ball-point pen or other objects to operate the touchpad. Hard and sharp objects may damage the touchpad.



—Calling up the main menu

—Calling up the option menu

—Move back in menu, move back one directory level / cancel functions

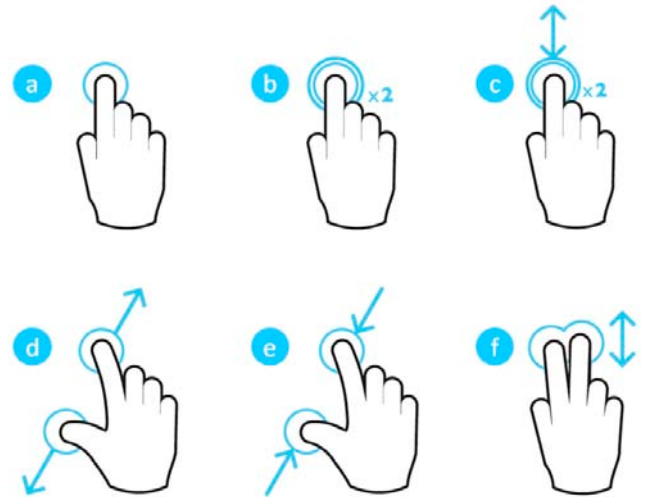


Notice

To enter text you can also use standard computer keyboard or mouse. It is possible to use wired models (USB) as well as wireless models (or a wireless Keyboard & Mouse combo) with USB-receiver.

Supported Gestures

Below listed gestures are supported from the touchpad of your PicoPix Projector. There is a short description how to execute it as well as an example of it's usage.

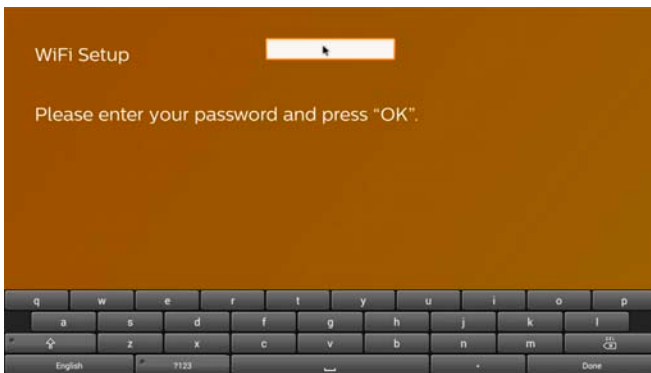


- Touch (one-finger press, lift) – to select items or type on keyboard
- Double touch (one-finger press, lift & one-finger press, lift) – to zoom in
- Double-touch drag (one-finger press, lift & one-finger press, move & lift) – to scroll or zoom in/out
- Pinch open (two-finger press, move outwards, lift) - zoom in
- Pinch close (two-finger press, move inwards, lift) - zoom out
- Two-finger swipe, scroll, drag (two-finger press, move, lift) – scroll in lists or websites, select multiple items

Virtual On-Screen Keyboard

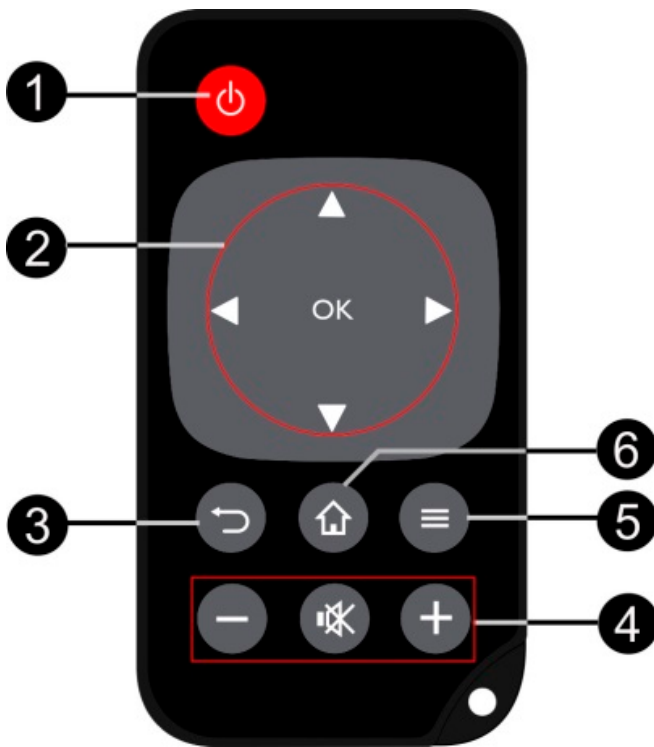
When you need to enter text (e.g.: when using the web-browser or when required to enter a password), the projector displays a virtual keyboard which can be operated by the touchpad or the remote control.

1. Click in the input field using the touchpad, external mouse or the remote control
2. The software keyboard appears.



3. Use the touchpad/mouse/remote control to enter the text on the software keyboard.

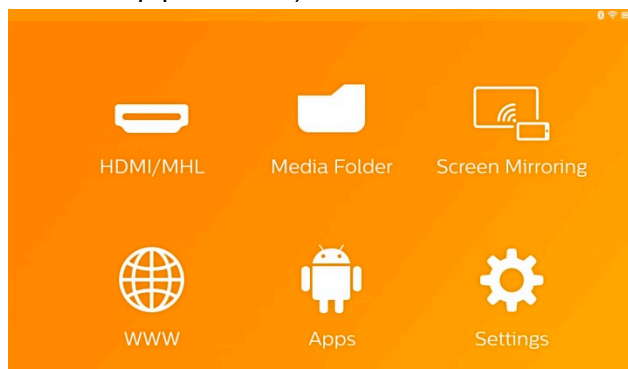
Remote Control



- ①—Short press: set PicoPix to standby mode / wake it up from standby mode
Long press: Power off the projector
- ②—Direction Buttons
 - Ⓞ_{OK}: Confirms selection
 - ⬆️/⬇️, ⬅️/⬅️: Navigation keys / navigation in the menus / modify settings
 - ⬆️/⬇️: Modify settings / access quick settings / during music playback: select previous or next title
 - ⬅️/⬅️: During video playback back/next, fast forward/backward
- ③—Move back in menu, move back one directory level / cancel functions
- ④—Volume keys
 - ⊖: Decrease the volume
 - 🔇: Mute the sound
 - ⊕: Increase the volume
- ⑤—Call up the option menu
- ⑥—Call up the main menu

Overview of the Main Menu

1. Switch on the device using the **POWER** button (hold it for 3 seconds).
2. After the PicoPix has started up, the main menu appears (if you switch on the PicoPix the very first time you will be guided through a short setup procedure)



3. Select the desired menu using the navigation keys \uparrow/\downarrow , \leftarrow/\rightarrow on your remote control or use the touchpad to navigate the cursor
4. Confirm with **OK** on the remote control or tap once using the touchpad
5. By pressing the \uparrow key you will return to the main menu.
6. To move back one step in sub-menus use the \leftarrow key
7. To modify important settings quickly use the \equiv key to enter the options menu
8. To browse in menus up/down use the \uparrow/\downarrow keys in the remote control or use 2-finger move on the touchpad



HDMI/MHL—Switch to the external video input HDMI or MHL.

Media Folder—Display the content of the internal memory and the inserted memory Micro-SD card or USB stick (movies, pictures, music, folder view). Display the content of network drives connected via WIFI/DLNA

WiFi Display— Display wirelessly multimedia content from your Smartphone or Tablet on PicoPix (Miracast compatible)

WWW—Opens an Internet web-browser.

APPs—Shows installed APPs (Android operating system)

Settings—Configure settings of the device.

Overview of the Options

Menu

To change important settings quickly, you can use the Options Menu, which can be accessed via the \equiv key.

The Options Menu is accessible also via movie playback or during a slideshow to change settings without the need to stop playback and enter the Settings Menu.



3 Initial Operation

Setting up the Device

You should position the device so that it stays flat on a table in front of the projection surface.

In case you need to tilt the projector upwards you can correct the projected image with the built-in keystone correction (Options Menu).

The distance between the projector and the screen determines the actual size of the image.

Connect Power Supply / Charge Battery

CAUTION!



Mains Voltage at the Site of Installation!

Check whether the mains voltage of the power supply matches the mains voltage available at the setup location.

1. Insert the small plug of the power supply into the socket on the rear side of your device.
2. Plug the power supply into the mains.
3. During the charging process, the indicator light on the side of the device will be red. When the battery is fully charged, it will turn green.
4. Charge the built-in battery completely before using for the first time. This will prolong the life of the battery.



Installing or Changing the Batteries of the Remote Control

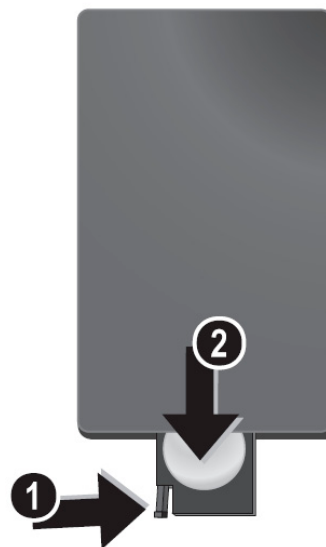
DANGER!



Risk of Explosion with Incorrect Type of Batteries

Only use batteries of type CR2025.

1. To access the battery, disengage the locking mechanism (1) and slide out the battery compartment (2).



2. Insert the new battery with the positive pole as shown on the back of the remote control.



3. Push the battery compartment back into the remote control until the locking mechanism engages.

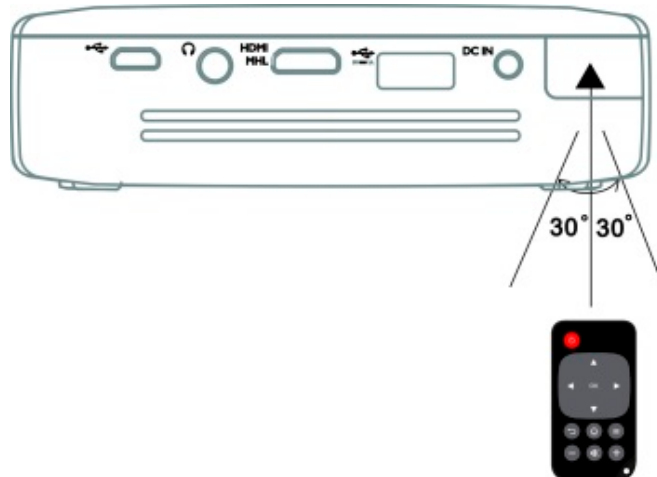


Notice

Normally the battery will last for around one year. If the remote control stops working, please replace the battery.

Using the Remote Control

Point the remote control at the remote sensor on the back of the device. The remote can be used within an angle of 60 degrees and up to 5 meters from the device. When using the remote control, no obstacle should be placed between the remote control and remote sensor.



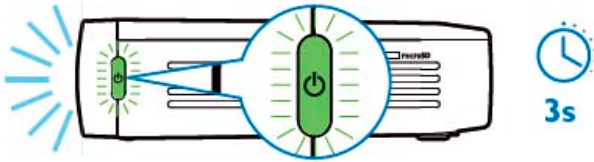
CAUTION!



- The improper use of batteries can lead to overheating, explosion, risk of fire and injury. Leaking batteries can possibly damage the remote control.
- Never expose the remote control to direct sunlight.
- Avoid deforming, dismantling or charging the batteries.
- Avoid exposure to open fire and water.
- Replace empty batteries immediately.
- If the device is not used for a long time, take out the batteries to prevent leakage and possible damage to the remote control.
- Used batteries should be disposed of according to the recycling regulations of your country.

Initial Setup

1. Press the **POWER** button for 3 seconds to turn the device (the power indicator light will light up).



2. Turn the device towards a suitable projection surface or wall. Note that the distance to the projection surface must be a minimum of 0.5 meters and a maximum of 5 meters. Make sure the projector is in a secure position.
3. Use the focus wheel on the right side to adjust the image sharpness.
4. If you switch on the PicoPix the very first time you will be guided through a short setup procedure which includes following settings
 - a) Select language.
 - b) Set time zone and time.
 - c) Select usage of projector (Home or Shop).

Home: for normal use at home
Shop: when you choose this option, the projector starts in demonstration mode and automatically displays pictures or videos stored in the internal memory in a loop.
 - d) Set up WIFI connection.



Notice

The demonstration mode can be activated or deactivated in the menu **Settings/ Maintenance/ Demo mode**.

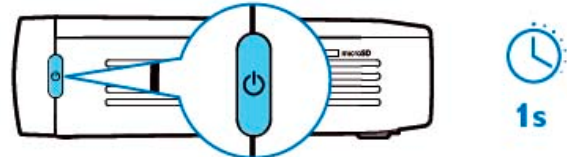
Turning off the Projector

To turn off the PicoPix completely press the **POWER** button for 3 seconds on the device or on the remote control.

Standby Mode

Set your PicoPix in Standby Mode if you would like to switch it on very quickly again.

To switch the PicoPix to Standby Mode press the **POWER** button on the device or on the remote control shortly (1s). To wake up your PicoPix from Standby Mode, press shortly again on the **POWER** button.



Notice

The PicoPix will need some power in Standby Mode. If kept a long time the battery can be empty.

CAUTION!



- Please take care to switch your PicoPix completely off before you transport it in a bag as only a short push of the Power button will switch it on and the packed unit can get very hot or damaged.

Indication of different POWER button LED color

1. PicoPix in power off status
 - a) No light: AC power adaptor not connected, or internal battery defect.
 - b) Green: Internal battery full charged.
 - c) Red: Internal battery under charging.
2. PicoPix in power on status
 - a) No light: Internal battery defect.
 - b) Green: Internal battery normal working.
 - c) Red: Internal battery in low capacity.
3. PicoPix in standby status
 - a) Green flash: Standby status.
 - b) Red light with green flash: Internal battery in low capacity.

4 Connect to various Playback Devices

Supplied cables

HDMI cable

Cables available as accessories

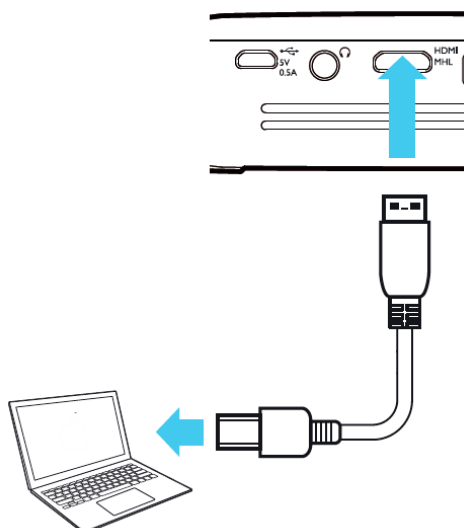
PicoPix MHL cable (PPA1340 / 253641800)

Mini DisplayPort cable (PPA1270 / 253520069)

Connecting to Devices with HDMI Output

Use the HDMI cable to connect the projector to laptop, DVD/BR player or others devices.

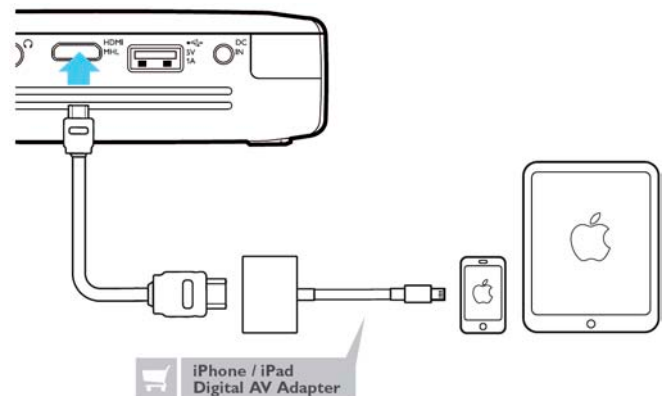
1. Switch the device on using the **POWER** button.
2. Connect the mini-HDMI plug of HDMI cable to the projector's **mini-HDMI** socket.
3. Connect the HDMI plug of HDMI cable to the HDMI socket of the playback device.
4. From the main menu, select **HDMI/MHL**.



Connecting to an iPhone/iPad/iPod

Use the iPhone/iPad/iPod-HDMI adapter cable (not supplied) and HDMI cable to connect the projector to an iPhone/iPad/iPod.

1. Switch the device on using the **POWER** button.
2. Connect the mini-HDMI plug of HDMI cable to the projector's **mini-HDMI** socket.
3. Connect the HDMI plug of HDMI cable to HDMI socket of iPhone/iPad/iPod-HDMI adapter cable.
4. Connect the iPhone/iPad/iPod-HDMI adapter cable to the playback device.
5. From the main menu, select **HDMI/MHL**.

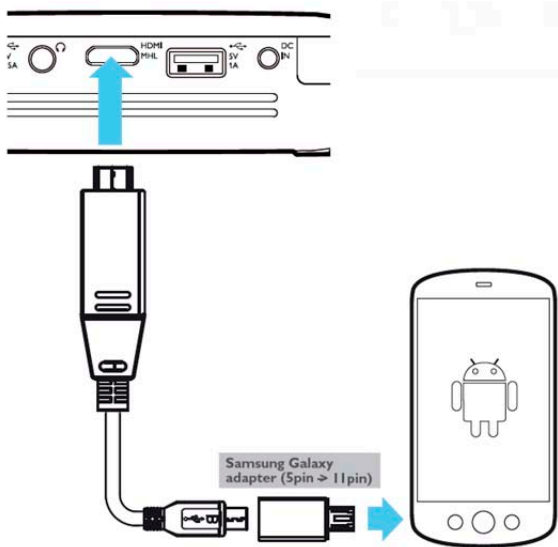


Connecting to an Android Smartphone or Tablet via MHL cable

Use the HML cable (available as accessory) to connect the projector to your Android Smartphone or Tablet.

Make sure that your Phone/Tablet is MHL compatible (www.mhlconsortium.org)

1. Switch the device on using the **POWER** button.
2. Connect the mini-HDMI plug of MHL cable to the projector's **mini-HDMI** socket.
3. Connect the MHL plug of MHL cable to the playback device.
4. From the main menu, select **HDMI/MHL**.



Notice

When MHL is working without AC power supply, the USB power output will be switched off.

Screen Mirroring – Connect Phones or Tablets wirelessly to share its contents

The screen mirroring feature allows you to mirror your phone or tablet screen on to your projector screen wirelessly to show content stored on your handheld device.



Notice

PicoPix and your device must be connected to the same WiFi network

Android

Make sure that your Phone/Tablet is Miracast compatible. Please check on the Wi-Fi Alliance-website: (www.wi-fi.org/product-finder)
Open Quick Settings (swipe from top to bottom) and activate ScreenMirroring

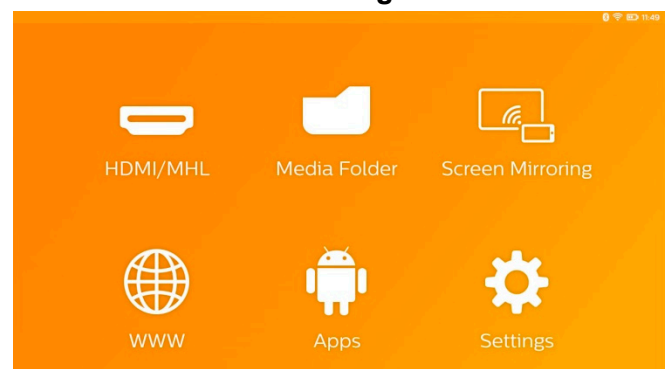
Windows

Make sure that your laptop runs at least Win8.1 and is compatible with Miracast hardware requirements

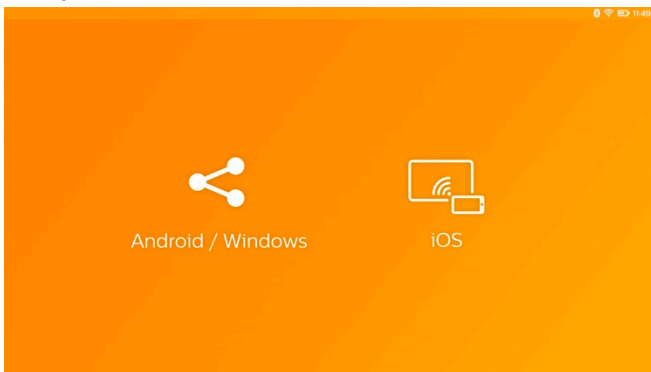
iOS

Screen mirroring can be accessed easily on your iDevice in the Control Center (swipe up from the bottom of screen) – and select “EZCast”

1. Switch the device on using the **POWER** button.
2. Select **Screen Mirroring** from the main menu



3. Select the appropriate operating system of your mobile device in the next screen



a) Android/Windows (Miracast compatible)

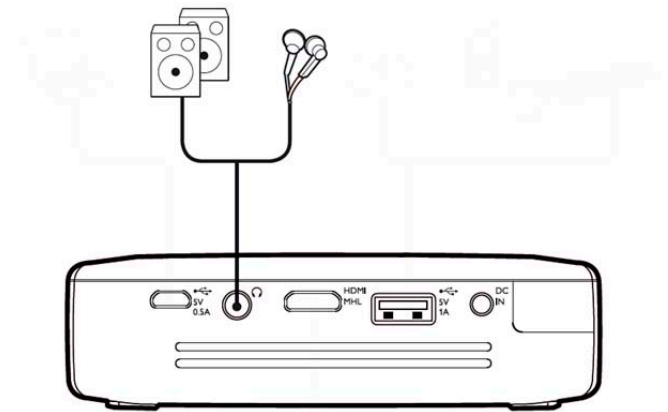
- Select on the Wifi Display (Miracast) application of the external device to search for the projector connection
- Example for mobile phones: open Quick Settings - swipe from top to bottom- and activate ScreenMirroring
- In the pop-up menu of the projector select OK to accept the connection.

b) iOS

- Activate Screen mirroring on your iDevice and select “EZCast Screen” to share your screen
- Example for mobile phones: open Control Center (swipe up from the bottom of screen) – and select “EZCast Screen” on right side

Connecting Headphones or external Speakers (cable connection)

1. Before connecting the headphones, turn down the volume on the device.
2. Connect the headphones to the projector's headphone slot. The device speakers deactivate automatically when the headphones are connected.



3. After connecting the headphones, increase the volume to a comfortable level.

DANGER!

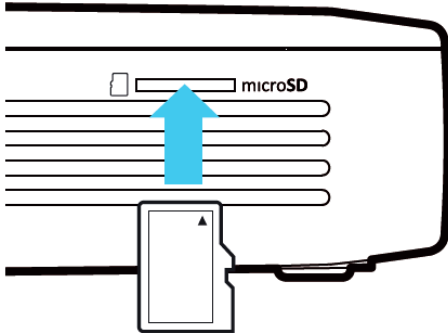


Danger of Hearing Damage

Do not use the device over a longer time at high volume – especially when using headphones. This could lead to the risks of hearing damage. Before connecting the headphones, turn down the volume on the device. After connecting the headphones, increase the volume to a comfortable level.

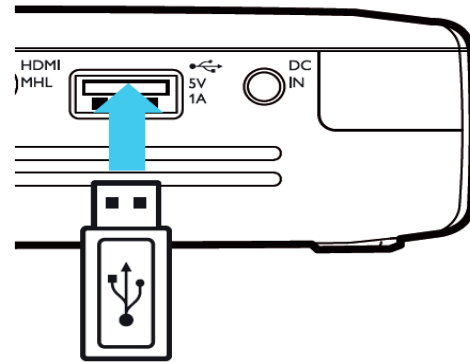
5 Memory

Inserting a Memory Card



1. Insert a microSD-card with the contacts facing upwards into the **microSD** slot at the side of the device.
2. Insert the Micro-SD card into the slot and push until it snaps into position with a “click”
3. Open **Media Folder** on the main screen to access the contents of the memory card
4. To remove the memory card push on it (until you hear a “click”) and it will eject automatically

Connecting an USB Storage Device



1. Connect the USB storage medium to the USB port on the back of the device.
2. Open **Media Folder** on the main screen to access the contents of the USB medium

DANGER!



Inserting a Memory Device!

Never pull out the memory device while the device is accessing it. This could cause data to be damaged or lost. Switch the device off in order to make sure that the device does not access the memory.

Connect to a Computer

(USB)

The User Manual and drivers are stored on the internal memory of the PicoPix - use a microUSB cable to connect the Projector to a computer to access these files.

In this way, you are able to copy files back and forth between the internal memory, an inserted memory card and the computer.

1. Switch the device on using the **POWER** button.
2. After switching on the device the main menu appears.
3. Connect the micro-USB plug to the Pocket Projector and the USB plug to the computer.



Notice

You cannot use the memory for media playback when the Pocket Projector is connected to a computer via USB.

4. If a memory card has been inserted, it will be displayed as another disk drive.
5. You can move, copy or delete data from the computer, the memory card (if inserted) and the internal memory.

6 Internet Connection, Wireless Network (WIFI)


The projector can be connected to the Internet via a wireless (WiFi) connection.

Use the procedure below appropriate to the type of connection you want.

7. Using \triangle/∇ to select **WIFI**.
8. Confirm with **OK**.
9. Modify the settings with \triangle/∇ .
10. Confirm with **OK**.

The \rightarrow key takes you one step back in the menu.

DANGER!



Information on Using WIFI!

The functioning of security systems, medical equipment or sensitive devices can be disrupted by the transmission power of the device. Observe any usage regulations (or restrictions) in the vicinity of such equipment.

The use of this device can affect the operation of insufficiently shielded medical devices and hearing aids and pacemakers through the release of high frequency radiation. Also consult a doctor or the manufacturer of the medical device to establish whether these are sufficiently shielded from external high frequency radiation.

Setting up a Wireless Network (WiFi)

1. Switch the device on using the **POWER** button.
2. After switching on the device the main menu appears.
3. Use the navigation keys to select **Settings**.
4. Confirm with **OK**.
5. Using \triangle/∇ to select **Wireless and Networks**.
6. Confirm with **OK**.
7. Using \triangle/∇ to select **WIFI Selection**.
8. Confirm with **OK**.
9. Use \triangle/∇ to select the desired wireless network.
10. Confirm with **OK**.
11. If your wireless network is password protected, an input window appears. Select the input field using the navigation keys of the remote control and press **OK**.
12. Enter the password with the virtual keyboard using the navigation keys of the remote control or with an external keyboard.
13. Click on **Connect**.

The \rightarrow key takes you one step back in the menu.

Switching Wireless

Networking (WiFi) on/off

Wireless networking is deactivated by default. You have the option of turning this function on.

1. Switch the device on using the **POWER** button.
2. After switching on the device the main menu appears.
3. Use the navigation keys to select **Settings**.
4. Confirm with **OK**.
5. Using \triangle/∇ to select **Wireless and Networks**.
6. Confirm with **OK**.

Setting up a Wireless Network (WiFi) using the Wizard

You can integrate your device very quickly and easily into an existing wireless network using WiFi Protected Setup (WPS) or using a wireless network scan. Using WPS, all important settings like network name (SSID) are automatically configured and the connection protected with secure WPA Encryption.

Using Wi-Fi Protected Set-up (WPS)

Using WiFi Protected Setup (WPS), you can integrate your device into an existing wireless network in two different ways very quickly and easily. You can activate the login with a pin code or using Push Button Configuration (PBC), if your access point (Access Point, Router) supports this method.

Using WPS with Push Button

Configuration (PBC)

1. Switch the device on using the **POWER** button.
2. After switching on the device the main menu appears.
3. Use the navigation keys to select **Settings**.
4. Confirm with **OK**.
5. Using \uparrow / \downarrow to select **Wireless and Networks**.
6. Confirm with **OK**.
7. Using \uparrow / \downarrow to select **WiFi Selection**.
8. Confirm with **OK**.
9. Use \uparrow / \downarrow to select the desired wireless network.
10. Confirm with **OK**.
11. Activate Push Button Configuration on the WiFi access point. The WiFi access point and device connect automatically and create a WPA protected connection.

Wifi Hotspot



Notice

The projector can work as an access point, if no, or only a 3G wireless network is working in the location of use.

You can use the portable Wi-Fi hotspot to share the device's network connection with computers or other devices through the Wi-Fi network.



Notice

When the WiFi hotspot mode is activated, it takes priority over other connections.

Activating WiFi Hotspot

1. Switch the device on using the **POWER** button.
2. After switching on the device the main menu appears.
3. Use the navigation keys to select **Settings**.
4. Confirm with **OK**.
5. Using \uparrow / \downarrow to select **Wireless and Networks**.
6. Confirm with **OK**.
7. Using \uparrow / \downarrow to select **WiFi Hotspot**.
8. Confirm with **OK**.
9. Using \uparrow / \downarrow to select **Portable WiFi Hotspot**.
10. Confirm with **OK**.
11. Use \uparrow / \downarrow to select **On**.
12. Confirm with **OK**.

The projector is now visible by other Wifi devices.

Setting up a WiFi Hotspot

To modify the WiFi hotspot name and define the security level.

1. Switch the device on using the **POWER** button.
2. After switching on the device the main menu appears.

3. Use the navigation keys to select **Settings**.
4. Confirm with **OK**.
5. Using **▲** / **▼** to select **Wireless and Networks**.
6. Confirm with **OK**.
7. Using **▲**/**▼** to select **WiFi Hotspot**.
8. Confirm with **OK**.
9. Using **▲**/**▼** to select **Setup WiFi Hotspot**.
10. Confirm with **OK**.
11. Modify the settings based on actual situation.

Item	Description
Network SSID	Name of the WiFi hotspot. This is the name used to identify your projector when it is detected by another WiFi device. To modify the name, select the field and press OK . With the keyboard, enter the new name.
Security	Select among the 3 levels of security. <ul style="list-style-type: none"> • Open (without security) • WPA PSK • WPA2 PSK
Password	Select the field and press OK . With the keyboard, enter the new password.
Show password	Check the box to display the password.

12. Using **▲**/**▼** to select **Save**.
13. Confirm with **OK**.

DLNA (Digital Living Network Alliance)

This device supports DLNA (Digital Living Network

Alliance) to easily share data over a home network, such as videos and photos.

Depending on the DLNA-compatible devices you own, you will be able to e.g.: stream films from your laptop or server to your PicoPix Projector.

Switching DLNA on and off

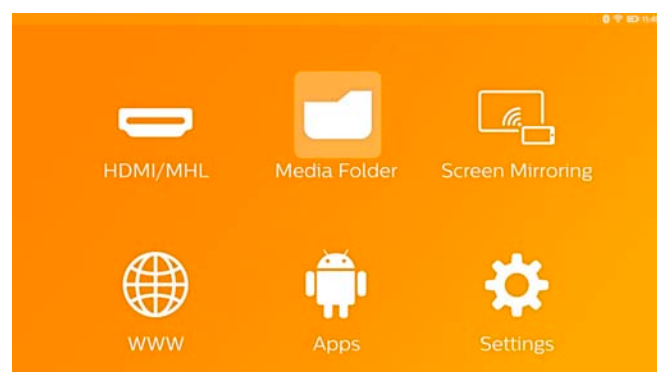
The DLNA function is switched on by default. You have the option of turning this function off.

1. Switch the device on using the **POWER** button.
2. After switching on the device the main menu appears.
3. Use the navigation keys to select **Settings**.
4. Confirm with **OK**.
5. Using **▲** / **▼** to select **Wireless and Networks**.
6. Confirm with **OK**.
7. Using **▲**/**▼** to select **DLNA**.
8. Confirm with **OK**.
9. Modify the settings with **▲**/**▼**.
10. Confirm with **OK**.

The **↶** key takes you one step back in the menu.

Play Media Using DLNA

If DLNA enabled devices are located in the connected network, then you can access them in media playback and file management by accessing **Media Folder** from Main Menu



7 Bluetooth

Your PicoPix comes with aptX® Low Latency audio codec which ensures high audio quality and wireless audio/video synchronization.

Just activate the built-in Bluetooth function to connect external speakers to the projector.



Notice

The Option menu provides only quick access to prior connected (paired) devices in Bluetooth settings. To pair a device you need to enter settings on the main screen to do the basic setup.

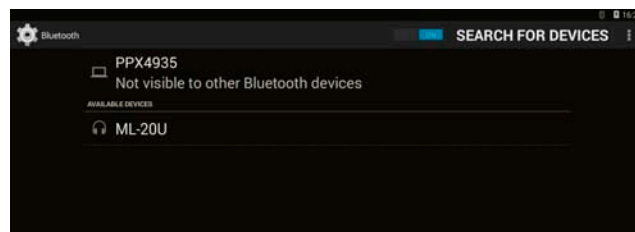
Activate Bluetooth

1. Switch the device on using the **POWER** button.
2. After switching on the device the main menu appears.
3. Use the navigation keys to select **Settings**.
4. Confirm with **OK**.
5. Using **▲/▼** to select **Wireless and Networks**.
6. Confirm with **OK**.
7. Using **▲/▼** to select **Bluetooth**.
8. Confirm with **OK**.
9. Using **▲/▼** to select **On**.
10. Confirm with **OK**.

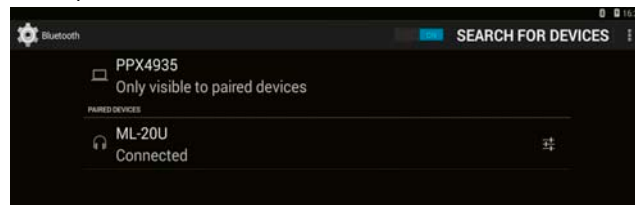
Set up Bluetooth

Parameters

1. Switch the device on using the **POWER** button.
2. After switching on the device the main menu appears.
3. Use the navigation keys to select **Settings**.
4. Confirm with **OK**.
5. Using **▲/▼** to select **Wireless and Networks**.
6. Confirm with **OK**.
7. Using **▲/▼** to select **Bluetooth Selection**.
8. Confirm with **OK** to enter detailed settings menu
9. Activate “Pairing” on your external Bluetooth speaker
10. Click “Search for devices” in order to initiate searching for your external speaker



11. Click on the found speaker shown in the device list to initiate pairing process
12. If you are asked to enter a Pairing Code please use the code provided from the speaker manufacturer (you can try 0000 or 1234)



13. The external speaker will be shown as “connected” in the device list.

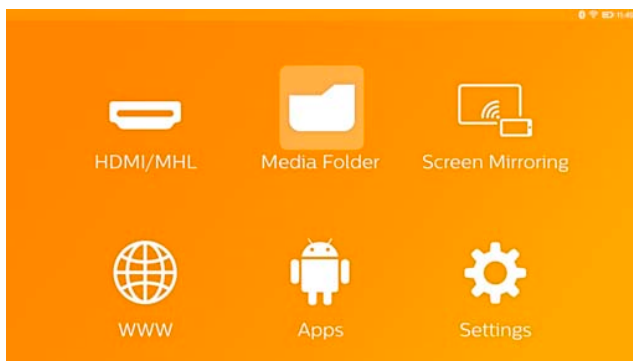
8 Media Playback

Media Folder

In general the **Media Folder** is used to select movie, picture or music files for playback in the built-in media player.

Enter **Media Folder** in order to

- access files located in
 - internal memory
 - connected USB memory devices
 - microSD card
 - network locations (DLNA)
- select installable “APK” files to install 3rd party APPs
- perform file operations (copy, move and delete files)



How to Navigate in the Media Folder

To navigate in the **Media Folder**, use the following keys:

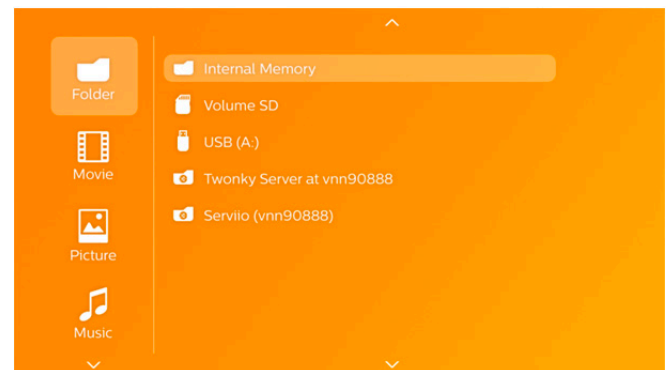
Keys	Action
▲ or ▼	To select folders or files in the displayed list.
▶ or OK	For directories, goes one level down. For files, starts the selected media file.
◀ or ↶	Goes one level up in the directory

	structure.
🏠	Exits to main screen.

In order to optimize the navigation, you can select a file type on the list:

- FOLDERS to view all files (photo, audio, video and installable APPs).
- MOVIES to view videos files only.
- PICTURES to view photo files only.
- MUSIC to view audio files only.

1. Switch the device on using the **POWER** button.
2. After switching on the device the main menu appears.
3. Use the navigation keys to select **Media Folder**.
4. Confirm with **OK**.



5. Using ▲/▼ to select **Folders, Movies, Pictures** or **Music**.
6. Confirm with **OK**.
7. Using ▲/▼ to select subfolder or file to be played.
8. Confirm with **OK**.



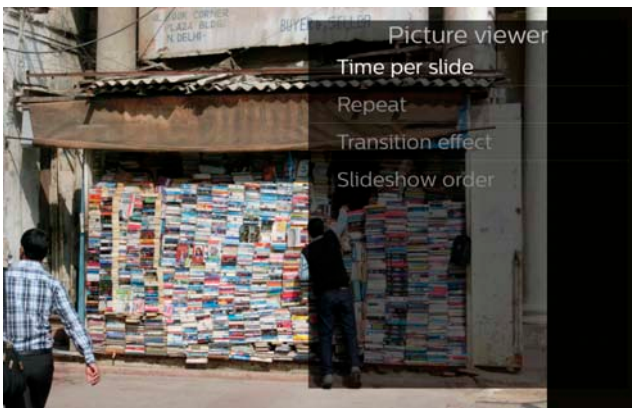
Notice

Only those videos that are compatible with the projector will be displayed.

Picture viewer, Slideshow



Keys	Action
	Start / Stop the picture slideshow
	Calls up the Option Menu . Select Picture viewer to setup the slideshow options (see below)
	Select music files to start a picture slideshow with background music
	Rotate the picture
	Exits to main screen.



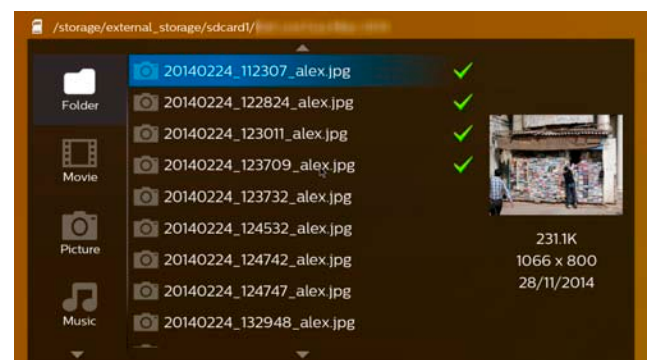
Music Playback

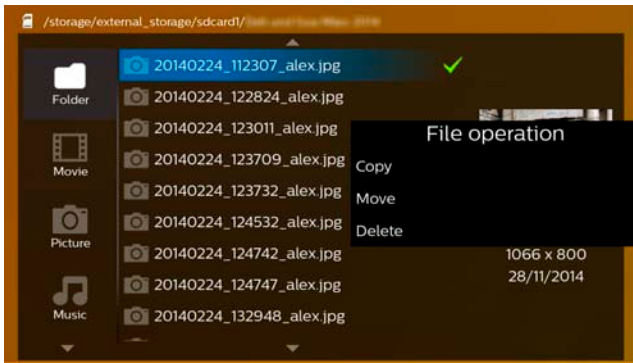
If you play music files the projection screen will be switched off automatically if no touchpad or remote control input is detected. As soon as you press any key the screen will be switched on again immediately.

You can modify this behavior in Settings or Option Menu by changing **Screen mode** setting in **Music** section.

File Operations in the Media Folder

or OK /	Double touch & hold: selects a file (marked with a green tick) Remote control: long-press OK button to select first file then use right arrow to select others
	Single touch: marks other files (only works if at least one file has been selected already)
	Calls up the Option Menu for file operations (copy, move or delete)





*.bmp	BMP
*.png	PNG
*.tif	TIF

Supported video file formats

Container	Video codec
*.3gp	MPEG-4, H.263
*.asf	WMV3
*.avi	MPEG-4, DivX, XviD, H.263, H.264, VC-1, WMV3
*.flv	H.263, H.264
*.m2ts, .ts	H.264, VC-1
*.mkv	H.264, WMV3
*.mp4	MPEG-4, H.263, H.264
*.mov	MPEG-4, H.263, H.264
*.mts	H.264
*.rm, *.rmvb	RV 8/9/10
*.wmv	WMV3

Supported audio file formats

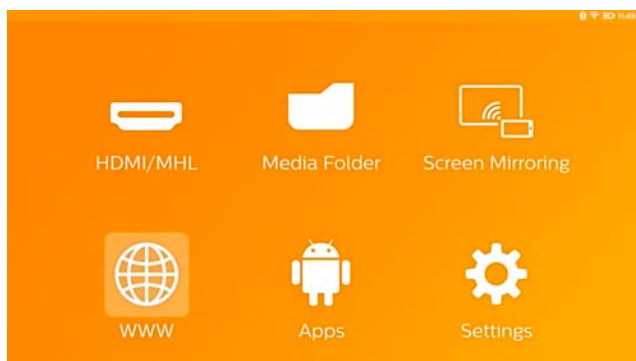
Container	Audio codec
*.mp3	MPEG-1, MPEG-2, MPEG-2.5, Audio Layer 1/2/3
*.wma	WMA 7/8/9
*.wav	PCM, ADPCM, U-Law
*.ogg, *.oga	Vorbis
*.flac	FLAC
*.alac	ALAC
*.ape	APE
*.aac	AAC, AAC+

Supported Photo File Formats

Container	Image codec
*.jpg, *.jpeg	JPEG, GIF

9 Web Browser

Your PicoPix has a preinstalled WebBrowser which you can access easily from the main menu by clicking on the globe icon (**WWW**).



Notice

To easily browse the internet and enter various links or web addresses we recommend connecting an USB mouse or an USB keyboard to the USB port of the projector.

10 Android / APPs

Your projector uses an Android operating system allowing you to install additional applications. This enables you to add additional functionality to your device.



Notice


As there are a millions of different applications (APPs) available we cannot guarantee that each single one works on your PicoPix projector.

Starting installed Android

Apps

1. Switch the device on using the **POWER** button.
2. After switching on the device the main menu appears.
3. Use the navigation keys to select **APPs**.
4. Confirm with **OK**.
5. Select the APP you want to use and confirm with **OK**.

Exiting Android

Press the  key to return to the main menu.

Installing Android-Apps

CAUTION!



Trusted Sources!

Apps from third party sources may be malicious.

Only use installation packets from trusted sources.

To install other APPs you have 2 options: install the APK file manually or use the pre-installed

Aptoide Store to download and install the APPs directly on the device

Manual installation of APK files:

1. Download the APK file and save it onto a Micro-SD card or USB stick.
2. Insert the Micro-SD card or USB stick into the device.
3. Switch the device on using the **POWER** button.
4. After switching on the device the main menu appears.
5. Use the navigation keys to select **Media Folder**.
6. Confirm with **OK**.
7. Use the navigation keys to find and select the previously downloaded **APK file** and confirm with **OK**.
8. Follow the installation procedure on the screen


Installation of APPs via Aptoide Store:

1. Switch the device on using the **POWER** button.
2. After switching on the device the main menu appears.
3. Use the navigation keys to select **APPs**.
4. Confirm with **OK**.
5. Select the **Aptoide APP** and confirm with **OK**.
6. In the store you can use the search function to find and install your desired application.

11 Settings



Notice

With the -key you can call up the **Options Menu** which provides the most important settings. The **Options Menu** is also accessible during media playback to do adjustments right away.

Overview of the Menu

Functions

Wireless and Network

WiFi – switching the wireless network (WiFi) off and on.

WiFi Selection – select the wireless network with which the device is to connect.

WiFi Hot Spot – activate and deactivate WiFi tethering.

VPN settings – set up parameters of VPN.



Mobile networks – set up parameters about mobile networks.

DLNA – switching DLNA off and on.

Bluetooth – switching the Bluetooth connection off and on.

Bluetooth Selection – set up parameters of Bluetooth connection.

Image

Keystone correction – use / to skew the output image, thereby making it rectangular.

Fit Screen – use / to select the screen mode.

Projection mode

Front – normal projection; the device is located in front of the projection surface/screen.

Rear – rear projection; the device is located behind the projection surface; the image is reflected horizontally.

Front Ceiling – the device is hanging from the ceiling in an upside-down position; the image is rotated by 180 degrees.

Rear ceiling – the device is located behind the projection surface, hanging from the ceiling in an upside-down position; the image is rotated by 180 degrees and reflected horizontally.

Wall color correction – color correction of the projected image to adjust to colored projection surfaces.

Smart Settings – select predefined settings for brightness / contrast / color saturation. If you modify these settings, the setting is switched to **Manual**.

Brightness – adjust the brightness of image.

Contrast – adjust the contrast of image.

Saturation – adjust the color saturation of image.

IntelliBright – switching the IntelliBright™ function off and on.

* IntelliBright™ is a technique from TI (Texas Instruments) DLP® that adaptively enhances dim regions of an image, resulting in brighter and more dynamic image.

Sound

Volume – adjust the volume.

Deep Bass – switching the deep bass on and off.

Equalizer – select the equalizer mode.

Key beep – turn key tones on and off.

Video Player

Language – Select the language of video file.

Subtitle – Set the subtitle of video file, or switch off.

Repeat mode – Set the repeat type for video files: Repeat deactivated (**Off**), repeat only the current video (**Movie**), repeat all videos in a directory (**Directory**), repeat all videos (**All**).

Music Player

Screen mode – Activate or deactivate the

projection during playback.

Repeat – Set the repeat type for music files: Repeat deactivated (**Off**), repeat only the current song (**Song**), repeat all songs in a directory (**Directory**), repeat all songs (**All**).

Shuffle – Activate this function for random playback. Otherwise, playback will take place in sequence.

Picture Viewer

Time per slide – Image viewing time during slide show.

Repeat – Set the type of repeat for slide show photos: Repeat off (**Off**), repeat all photos in the directory (**Directory**), repeat all stored photos (**All**).

Transition effect – Set image transitions.

Slideshow order – Play slide show in order or randomly.

System Settings

Date and time – set date and time.

Android Settings – set Android system.

Wall paper – Select background images.

Sleep mode – With this function, the projector automatically goes to ECO mode after a specified period of time or at the end of a movie.

Brightness mode – select different brightness mode.

Language

Select the desired language for the menu.

Maintenance

Reset settings – Reset settings to factory defaults.

Online firmware update - Update firmware. The firmware package will be downloaded from Internet.

Demo mode – switching demo mode on and off.

Information – Display free space in the internal memory and information on the device (Firmware version / Device name / Model / MAC address / IP address / serial number).

12 Service

Care Instructions for the Battery

The capacity of the battery diminishes with time. You can prolong the life of the battery if you observe the following points:

- Without a power supply, the device operates from the built-in battery. When the battery does not have sufficient capacity, the device turns off. Connect the device to the power supply.
- When the battery does not have sufficient capacity, it will be indicated by the color of the power switch and the battery symbol in the display.
- Charge the battery regularly. Don't store the device with a completely discharged battery.
- Keep the device and the battery away from sources of heat.

DANGER!



Do not Replace the Battery Yourself

Do not try to replace the battery yourself. Incorrect handling of the battery or using the wrong type of battery can cause damage to the device or cause injury.

Charge the Device

	Device off	Device on
Connected to the power adapter	The indicator light on the side of the device turns red. Fast charging within about 3 hours. When charging is completed the indicator light turns off.	Device remains turned on. Slow charging within about 10 hours. When charging is completed the indicator light turns green.

Cleaning

DANGER!



Instructions for Cleaning!

Use a soft, lint-free cloth. Never use liquid or easily flammable cleansers (sprays, abrasives, polishes, alcohol, etc.). Do not allow any moisture to reach the interior of the device. Wipe over the surfaces gently to avoid scratches to the surface..

Cleaning the Lens

Use a lens brush or lens cleaning paper for cleaning the lens of the projector.

DANGER!



Do not use any Liquid Cleaning Agents

Do not use any liquid cleaning agents for cleaning the lens, to avoid damaging the coating film on the lens.


Troubleshooting

Power Cycling

If a problem occurs that cannot be corrected with the instructions in this user manual (see also the help below), follow the steps given here.

1. Switch the device off using the **POWER**

- button.
2. Wait at least ten seconds.
3. Switch the device on using the **POWER** button.
4. If the problem cannot be solved, please contact our customer service or your retailer.

Problems	Solutions
The Pocket Projector is unresponsive or hung up.	<ul style="list-style-type: none"> • Long press the POWER button for 10 seconds until the projector is forced to power off. • Switch the projector on again.
The Pocket Projector cannot be switched on.	<ul style="list-style-type: none"> • Connect the supplied power supply to recharge the internal battery. • Wait for 10 minutes, then switch on the projector.
No sound.	<ul style="list-style-type: none"> • Adjust the volume using the  keys on the remote control.
No sound from the external connected device.	<ul style="list-style-type: none"> • Check the cables to the external device. • Set the volume on the external device. • Only the original cables from the device manufacturer may work properly
Bad sound quality with a computer connection.	<ul style="list-style-type: none"> • Check if the audio cable is connected to the computer line-out socket. • The volume setting on the computer should not be too high.
Only the initial screen appears and not the image from the external device.	<ul style="list-style-type: none"> • Check if the cables are connected to the right sockets. • Please check that the external device is switched on and output is set to HDMI
Only the initial screen appears and not the image from the connected computer.	<ul style="list-style-type: none"> • Check if the cables are connected to the right sockets. • Check if the resolution of the computer is set to 1280*720.
Device turns off	<ul style="list-style-type: none"> • When the device is running for a long period of time, it may get hot and a warning symbol appears on the screen. The device automatically turns off when it gets too hot. After the device has cooled down, it can be switched on and used again. • When the battery does not have sufficient capacity, the device turns off. Connect the device to the power supply.

	<ul style="list-style-type: none"> The projector has APD (Auto Power Down) mode for power saving. If stays in main menu for 30 minutes without any operation, the projector will go to stand-by mode automatically.
Device changes from maximum level of brightness to a lower level of brightness during playback.	<ul style="list-style-type: none"> When the environment temperature is too high, the device turns automatically from maximum level of brightness to a lower level of brightness in order to protect the high power LEDs.
Bad image or color quality when connecting with HDMI.	<ul style="list-style-type: none"> Use the supplied HDMI cable. Third-party cables may cause signal distortions.
The device cannot read a microSD card or USB stick.	<ul style="list-style-type: none"> The device does not support exFAT file system, please use FAT format instead.

13 Appendix

Technical Data

Dimensions (L×H×W) 115 × 32 × 115 mm
Weight 0.772 lb (0,351 kg)
Recommended Ambient 5 – 35 °C
Relative Humidity
..... 15 – 85 % (non-condensing)
File format 3gp, *.asf, *.avi, *.flv,
..... *.m2ts, *.ts, *.mkv, *.mp4,
..... *.mov, *.mts, *.rm, *.rmvb, *.wmv
Photo formats JPEG, BMP, PNG, GIF, TIF
Music formats MP2, MP3, WAV, WMA,
..... OGG, OGA, FLAC, ALAC,
..... APE, AAC, M4A
Video connection Mini-HDMI socket
Headphone connection Stereo,
..... 3.5 mm socket
Internal speaker mono 3 W
Internal memory 4 GB
Compatible Memory Card ... Micro-SD (TF) card
Standard USB port max. power
..... 5 V $\overline{---}$, 1000 mA
Micro USB port max. power 5V $\overline{---}$, 500mA
MHL port max. power 5V $\overline{---}$, 1000 mA

Technology / optical

Display technology 720P 0.3" DLP@
Light source RGB LED
Native resolution 1280 x 720 Pixel (16:9)
Supported Resolutions VGA/SVGA/WVGA
..... XGA/WXGA/FULL HD
Projected image size 15 - 150 inch
..... 38 – 381 cm
Screen distance
..... 1.6 ft (0.5m) up to 16.4 ft (5m)
Display refresh rate 60/50 Hz

Power supply

Model No HKA04519024-XA
Input 100-240 V, 50/60 Hz, max. 1.2 A
Output 19 Vdc, 2.37 A
Manufacturer Huntkey

Built-in rechargeable battery

Battery type Lithium-Polymer
Capacity 2000 mAh 7.4 V
Charging time 3 h
Operating time 1.5 h
Manufacturer Fujian United

Accessories

Following accessories are available for your device:

PicoPix MHL cable (PPA1340 / 253641800)
Mini DisplayPort cable . (PPA1270 / 253520069)
PicoPix cover (PPA4400 / 253641813)

All data are provided for reference purposes only.

Sagemcom Documents SAS reserves the right to make any changes without prior notice.



The CE marking certifies that the product meets the main requirements of the European Parliament and Council directives 1999/5/CE, 2006/95/CE, 2004/108/CE and 2009/125/CE on information technology equipment, regarding safety and health of users and regarding electromagnetic interference.

The declaration of compliance can be consulted on the site www.picopix.philips.com.

Preservation of the environment as part of a sustainable development plan is an essential concern of Sagemcom Documents SAS. The desire of Sagemcom Documents SAS is to operate systems observing the environment.

The desire of Sagemcom Documents SAS is to operate systems observing the environment and consequently it has decided to integrate environmental performances in the life cycle of this products, from manufacturing to commissioning use and elimination.



Federal Communications Commission (FCC)

Statement: You are cautioned that changes or modifications not expressly approved by the party responsible for compliance could void the user's authority to operate the equipment.

This equipment has been tested and found to comply with the limits for a Class B digital device, pursuant to part 15 of the FCC rules. These limits are designed to provide reasonable protection against harmful interference in a residential installation. This equipment generates, uses and can radiate radio frequency energy and, if not installed and used in accordance with the instructions, may cause harmful interference to radio communications.

However, there is no guarantee that interference will not occur in a particular installation. If this equipment does cause harmful interference to radio or television reception, which can be determined by turning the equipment off and on, the user is encouraged to try to correct the interference by one or more of the following measures:

- Reorient or relocate the receiving antenna.
- Increase the separation between the equipment and receiver.

- Connect the equipment into an outlet on a circuit different from that to which the receiver is connected.
- Consult the dealer or an experienced radio/TV technician for help.

This device complies with Part 15 of the FCC Rules. Operation is subject to the following two conditions:

- (1) this device may not cause harmful interference;
- (2) this device must accept any interference received, including interference that may cause undesired operation.

FCC RF Radiation Exposure Statement: This transmitter must not be co-location or operating in conjunction with any other antenna or transmitter.

This equipment complies with FCC RF radiation exposure limits set forth for an uncontrolled environment.

This equipment should be installed and operated with a minimum distance of 7.8 inches (20 centimeters) between the radiator and your body.

IC

English: This device complies with Industry Canada license-exempt RSS standard(s).

Operation is subject to the following two conditions: (1) This device may not cause interference, and (2) This device must accept any interference, including interference that may cause undesired operation of the device.

The digital apparatus complies with Canadian CAN ICES-3 (B)/NMB-3(B).

French: Le présent appareil est conforme aux CNR d'Industrie Canada applicables aux appareils radio exempts de licence. L'exploitation est autorisée aux deux conditions suivantes: (1) l'appareil ne doit pas produire de brouillage, et (2) l'utilisateur de l'appareil doit accepter tout brouillage radioélectrique subi, même si le brouillage est susceptible d'en compromettre le fonctionnement.

English: RF Radiation Exposure statement:

The device meets the exemption from the routine evaluation limits in section 2.5 of RSS102 and users can obtain Canadian information on RF exposure and compliance.

This equipment should be installed and operated with a minimum distance of 7.8 inches (20 centimeters) between the radiator and your body.

French: l'exposition aux rayonnements rf déclaration:

le dispositif répond à l'exemption des limites d'évaluation courante dans la section 2.5 de rss102 et utilisateurs d'obtenir de l'information canadienne sur l'exposition aux champs rf et la conformité.


ce matériel doit être installé et exploité à une distance minimale de 7,8 cm (20 cm) entre le radiateur et votre corps.

For Mexico only.

PROYECTOR DE BOLSILLO (PicoPix)

Alimentación: 100 – 240V ~ 50/60Hz 1A

Sal: 12Vcc 2A

Proyector: 12Vcc 2A

Importador:

P&F Mexicana, SA de C.V.

AV. La Palma No 6

Col. San Fernando la Herrudara Huixquilucan, Edo.

de Mexico CP 52787 Tel: 5269 9000

HECHO EN: China

**LEA CUIDADOSAMENTE ESTE INSTRUC-TIVO
ANTES DE USAR SU APARATO.**



Packaging: The presence of the logo (green dot) means that a contribution is paid to an approved national organization to improve package recovery and recycling infrastructures. Please respect the sorting rules set up locally for this kind of waste.

Batteries: If your product contains batteries, they must be disposed of at an appropriate collection point.



Product: The crossed-out waste bin stuck on the product means that the product belongs to the family of electrical and electronic equipment. In this respect, the European regulations ask you to dispose of it selectively:

- At sales points in the event of the purchase of similar equipment.
- At the collection points made available to you locally (drop-off center, selective collection, etc.).

In this way you can participate in the re-use and upgrading of Electrical and Electronic Equipment Waste, which can have an effect on the environment and human health.

The paper and cardboard packaging used can be disposed of as recyclable paper. Have the plastic wrapping recycled or dispose of it in the non-recyclable waste, depending on the requirements in your country.

Trademarks: The mentioned references in this manual are trademarks of the respective companies. The lack of the trademarks ® and ™ does not justify the assumption that these dedicated terminologies are free trademarks. Other product names used herein are for identification purposes only and may be trademarks of their respective owners. Sagemcom Documents SAS disclaims any and all rights in those marks.

Neither Sagemcom Documents SAS nor its affiliates shall be liable to the purchaser of this product or third parties for damages, losses, costs, or expenses incurred by the purchaser or third parties as a result of accident, misuse, or abuse of this product or unauthorized modifications, repairs, or alterations to this product, or failure to strictly comply with Sagemcom Documents SAS operating and maintenance instructions.

Sagemcom Documents SAS shall not be liable for any damages or problems arising from the use of any options or any consumable materials other than those designated as original Sagemcom Documents SAS / PHILIPS products or Sagemcom Documents SAS / PHILIPS approved products.

Sagemcom Documents SAS shall not be held liable for any damage resulting from electromagnetic interference that occurs from the use of any interface cables other than those designated as Sagemcom Documents SAS / PHILIPS products.

All rights reserved. No part of this publication may be reproduced, stored in a retrieval system or transmitted in any form or by any means, electronic, mechanical, photocopying, recording, or otherwise, without the prior written permission of Sagemcom Documents SAS. The information contained herein is designed only for use with this product. Sagemcom Documents SAS is not responsible for any use of this information as applied to other devices.

This user manual is a document that does not represent a contract.

Errors, printing errors and changes are reserved.

Copyright © 2015 Sagemcom Documents SAS



PHILIPS and the PHILIPS' Shield Emblem are registered trademarks of Koninklijke Philips N.V. and are used by Sagemcom under license from Koninklijke Philips N.V.

© 2015 Sagemcom Documents SAS

All rights reserved

Sagemcom Documents SAS

Documents Business Unit

Headquarters: 250, route de l'Empereur

92848 Reuil-Malmaison Cedex • FRANCE

Tel: +33 (0)1 57 61 10 00 • Fax: +33 (0)1 57 61 10 01

www.sagemcom.com

Simplified Joint Stock Company • Capital 8.479.978€ • 509 448 841 RCS Nanterre

PPX4935

EN

VERSION A