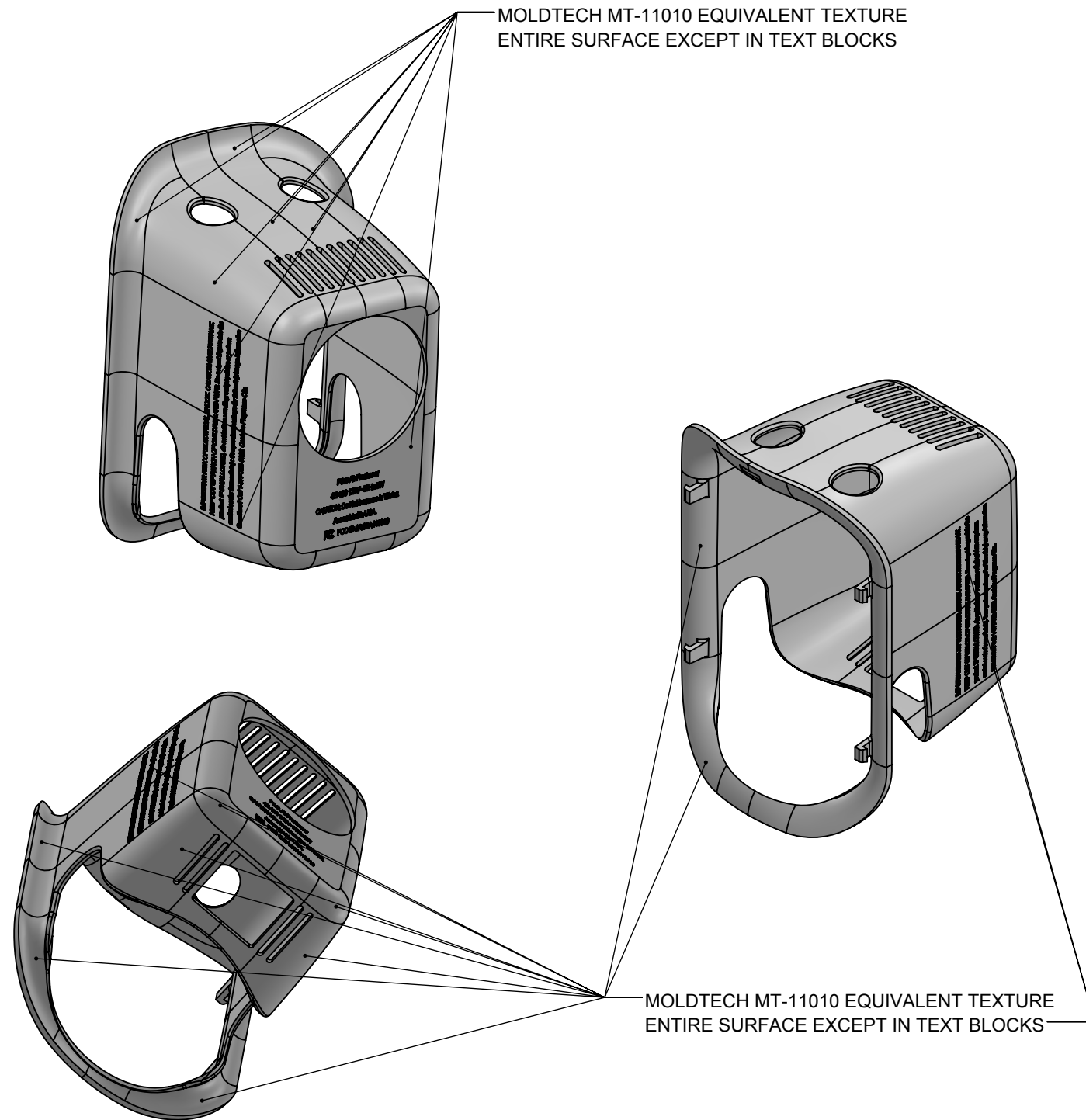


REVISIONS			
REV.	DESCRIPTION	DATE	APPROVED
A	RELEASE FOR QUOTE AND REVIEW	3/15/2016	
B	UPDATED TEXT	3/17/2016	
C	UPDATED RESIN NOTE	3/26/2016	



NOTES (UNLESS OTHERWISE SPECIFIED):

1. MATERIAL: POLYPROPYLENE HOMOPOLYMER, SAMSUNG PP FB51
2. MATERIAL AND PROCESSES USED IN THE FABRICATION OF THIS PART TO BE ROHS COMPLIANT; CERTIFICATE(S) OR ROHS COMPLIANCE TO BE MADE AVAILABLE FROM SUPPLIER UPON REQUEST
3. MATERIAL COLOR: WHITE, PANTONE Q610-7-2
4. FINISH:  
ENTIRE EXTERIOR FINISH TO BE MOLDTECH MT-11010  
MOLD FINISH TO BE SPI B2 OR BETTER ON ALL NON-TEXTURED SURFACES.
5. COSMETIC ACCEPTANCE CRITERIA: PART TO COMPLY WITH GENER8 DOCUMENT WI-00247
6. DIMENSIONS NOT SPECIFIED SHALL BE BASIC PER CAD FILE PAG-4HBC4-C
7. TOLERANCE:  
0 < D < 25mm: +/-0.05mm  
25 < D < 50mm: +/-0.10mm  
50 < D < 75mm: +/-0.15mm  
75 < D < 100mm: +/-0.20mm  
D > 100mm: +/-0.05mm per 25mm
8. DIMENSIONS INDICATED INSPECTION ARE CRITICAL TO FUNCTION AND ARE TO BE INSPECTED ACCORDING TO GENER8 IQC POLICY
9. GATE TO BE TRIMMED FLUSH TO SURROUNDING SURFACE WITHIN 0.15 MM
10. EJECTOR PIN, PARTING LINE AND GATE LOCATION MUST BE APPROVED BY GENER8 PRIOR TO MOLD FABRICATION
11. MOLD TO BE PROPERTY OF GENER8 AND SHALL BE MARKED WITH GENER8, PART NUMBER, REVISION AND DATE
12. IF INDICATED, REMOVABLE MOLD INSERT(S) SHALL CONTAIN PART DATA INCLUDING: PART NUMBER; REVISION LEVEL; PLASTIC ID LOGO; DATE OF MOLDING
13. PACKAGE PARTS TO PREVENT DAMAGE; MARK PACKAGING WITH PURCHASE ORDER NUMBER, PART NUMBER AND REVISION
14. PLASTIC VOLUME: 24,521 CUBIC MM



TITLE:

## HOUSING BACK

SIZE

B

DWG. NO.
----------

PAG-4HBCK4

REV

C

SCALE: 1:1.5

WEIGHT:

SHEET 1 OF 3

PROPRIETARY AND CONFIDENTIAL

THE INFORMATION CONTAINED IN THIS  
DRAWING IS THE SOLE PROPERTY OF  
GENER8. ANY REPRODUCTION IN PART  
OR AS A WHOLE WITHOUT THE WRITTEN  
PERMISSION OF GENER8 IS PROHIBITED.

DO NOT SCALE DRAWING

UNLESS OTHERWISE SPECIFIED:

DIMENSIONS ARE IN MILLIMETERS  
TOLERANCES:

TOLERANCES:

X	± 2
.X	± .5
.XX	± .1
.XXX	± .02

ANGULAR: .X° ± .5°

ASME Y14.5M-1994  
THIRD ANGLE  
PROJECTION



MATERIAL

PP

## FINISH

SEE NOTES

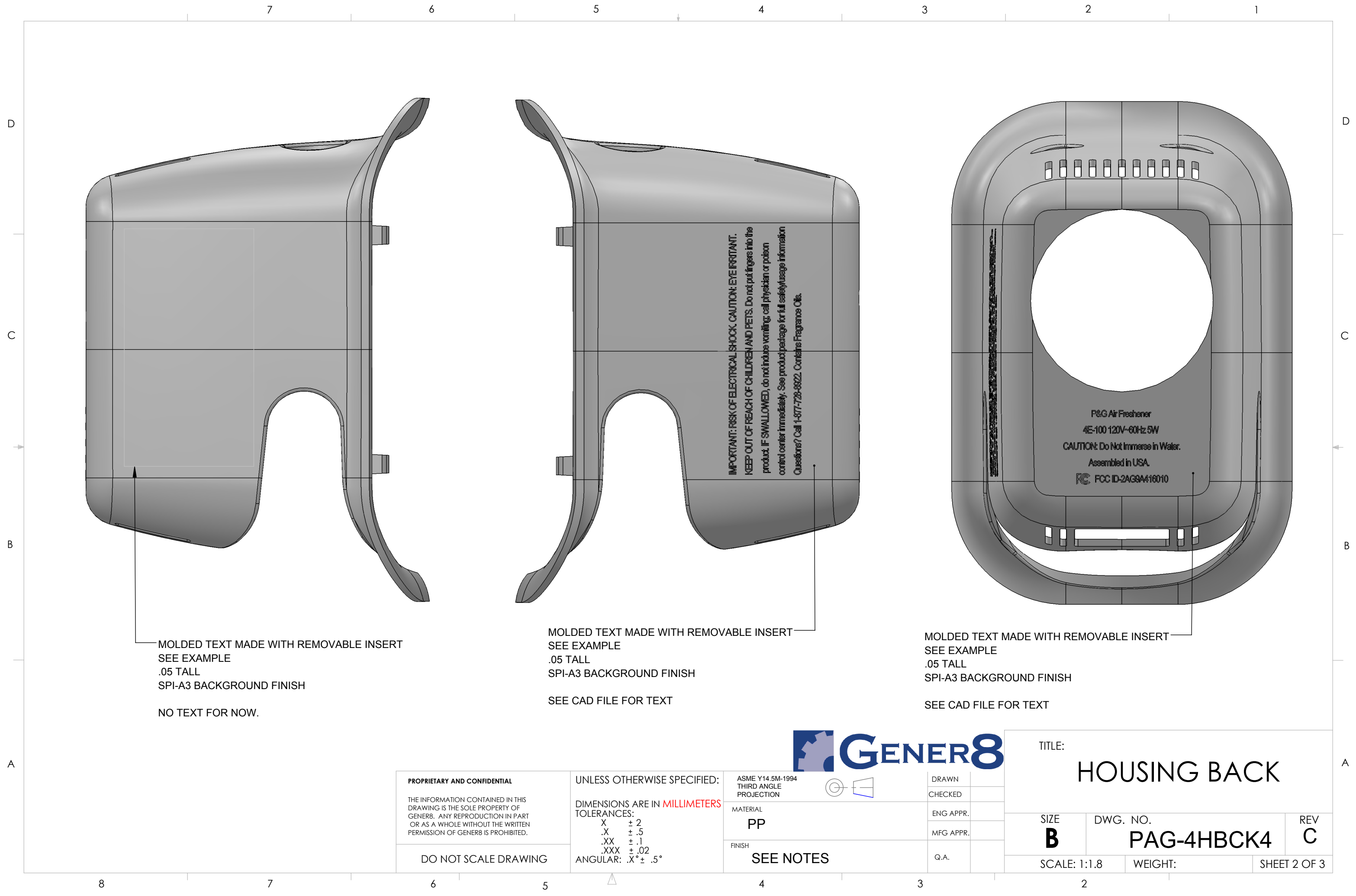
DRAWN

CHECKED

ENG APPR.

MFG APPR.

Q.A.

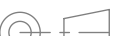


MOLDED TEXT MADE WITH REMOVABLE INSERT  
SEE EXAMPLE  
.05 TALL  
SPI-A3 BACKGROUND FINISH  
  
NO TEXT FOR NOW.

MOLDED TEXT MADE WITH REMOVABLE INSERT  
SEE EXAMPLE  
.05 TALL  
SPI-A3 BACKGROUND FINISH  
  
SEE CAD FILE FOR TEXT

MOLDED TEXT MADE WITH REMOVABLE INSERT  
SEE EXAMPLE  
.05 TALL  
SPI-A3 BACKGROUND FINISH  
  
SEE CAD FILE FOR TEXT



PROPRIETARY AND CONFIDENTIAL  THE INFORMATION CONTAINED IN THIS DRAWING IS THE SOLE PROPERTY OF GENER8. ANY REPRODUCTION IN PART OR AS A WHOLE WITHOUT THE WRITTEN PERMISSION OF GENER8 IS PROHIBITED.	UNLESS OTHERWISE SPECIFIED:		ASME Y14.5M-1994 THIRD ANGLE PROJECTION				DRAWN	
	DIMENSIONS ARE IN <b>MILLIMETERS</b>						CHECKED	
	TOLERANCES:		MATERIAL				ENG APPR.	
DO NOT SCALE DRAWING	X ± 2 .X ± .5 .XX ± .1 .XXX ± .02 ANGULAR: .X° ± .5°		PP				MFG APPR.	
			FINISH		SEE NOTES		Q.A.	

TITLE: <b>HOUSING BACK</b>		
SIZE <b>B</b>	DWG. NO. <b>PAG-4HBCK4</b>	REV <b>C</b>
SCALE: 1:1.8	WEIGHT:	SHEET 2 OF 3