

## Plot 28 UMTS Band V Right Cheek Middle

Date: 5/11/2020

Communication System: UID 0, WCDMA Band 5; Frequency: 836.6 MHz; Duty Cycle: 1:1

Medium parameters used:  $f = 837$  MHz;  $\sigma = 0.925$  S/m;  $\epsilon_r = 43.198$ ;  $\rho = 1000$  kg/m<sup>3</sup>

Ambient Temperature: 22.3 °C Liquid Temperature: 21.5 °C

Phantom section: Right Section

DASY5 Configuration:

Sensor-Surface: 1.4mm (Mechanical Surface Detection)

Probe: EX3DV4 - SN3677; ConvF(9.20, 9.20, 9.20); Calibrated: 6/19/2019;

Electronics: DAE4 SN1317; Calibrated: 10/23/2019

Phantom: SAM1; Type: SAM; Serial: TP-1534

Measurement SW: DASY52, Version 52.10 (1); SEMCAD X Version 14.6.11 (7439)

**Right Cheek Middle/Area Scan (8x14x1):** Measurement grid: dx=15mm, dy=15mm

Maximum value of SAR (measured) = 0.160 W/kg

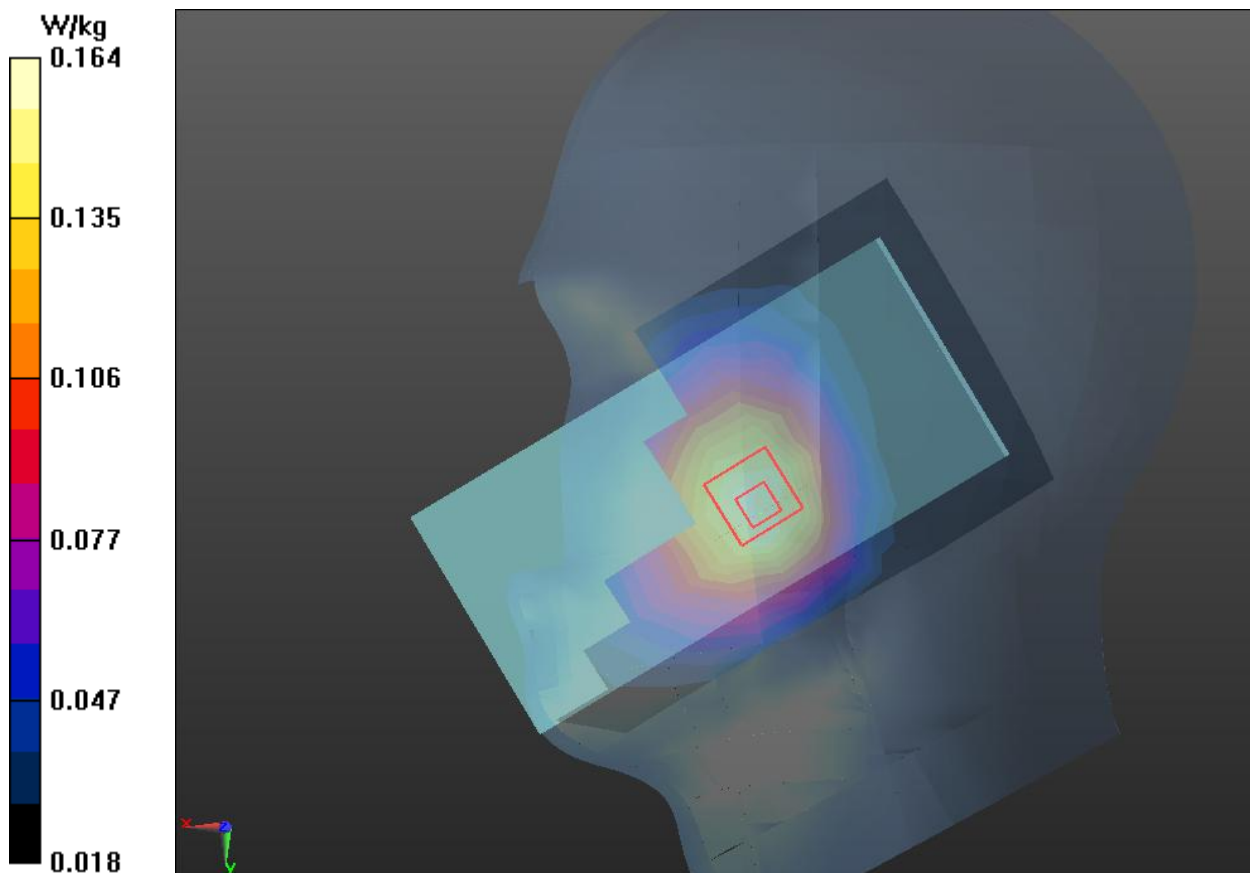
**Right Cheek Middle/Zoom Scan (5x5x7)/Cube 0:** Measurement grid: dx=8mm, dy=8mm, dz=5mm

Reference Value = 3.963 V/m; Power Drift = 0.073 dB

Peak SAR (extrapolated) = 0.196 W/kg

**SAR(1 g) = 0.156 W/kg; SAR(10 g) = 0.120 W/kg**

Maximum value of SAR (measured) = 0.164 W/kg



# Plot 29 UMTS Band V Back Side Middle(Distance 15mm)

Date: 5/11/2020

Communication System: UID 0, WCDMA Band 5; Frequency: 836.6 MHz;Duty Cycle: 1:1

Medium parameters used:  $f = 837$  MHz;  $\sigma = 0.925$  S/m;  $\epsilon_r = 43.198$ ;  $\rho = 1000$  kg/m<sup>3</sup>

Ambient Temperature:22.3 °C Liquid Temperature: 21.5°C

Phantom section: Flat Section

DASY5 Configuration:

Sensor-Surface: 1.4mm (Mechanical Surface Detection)

Probe: EX3DV4 - SN3677; ConvF(9.20, 9.20, 9.20); Calibrated: 6/19/2019;

Electronics: DAE4 SN1317; Calibrated: 10/23/2019

Phantom: SAM1; Type: SAM; Serial: TP-1534

Measurement SW: DASY52, Version 52.10 (1); SEMCAD X Version 14.6.11 (7439)

**Back Side Middle/Area Scan (8x13x1):** Measurement grid: dx=15mm, dy=15mm

Maximum value of SAR (measured) = 0.132 W/kg

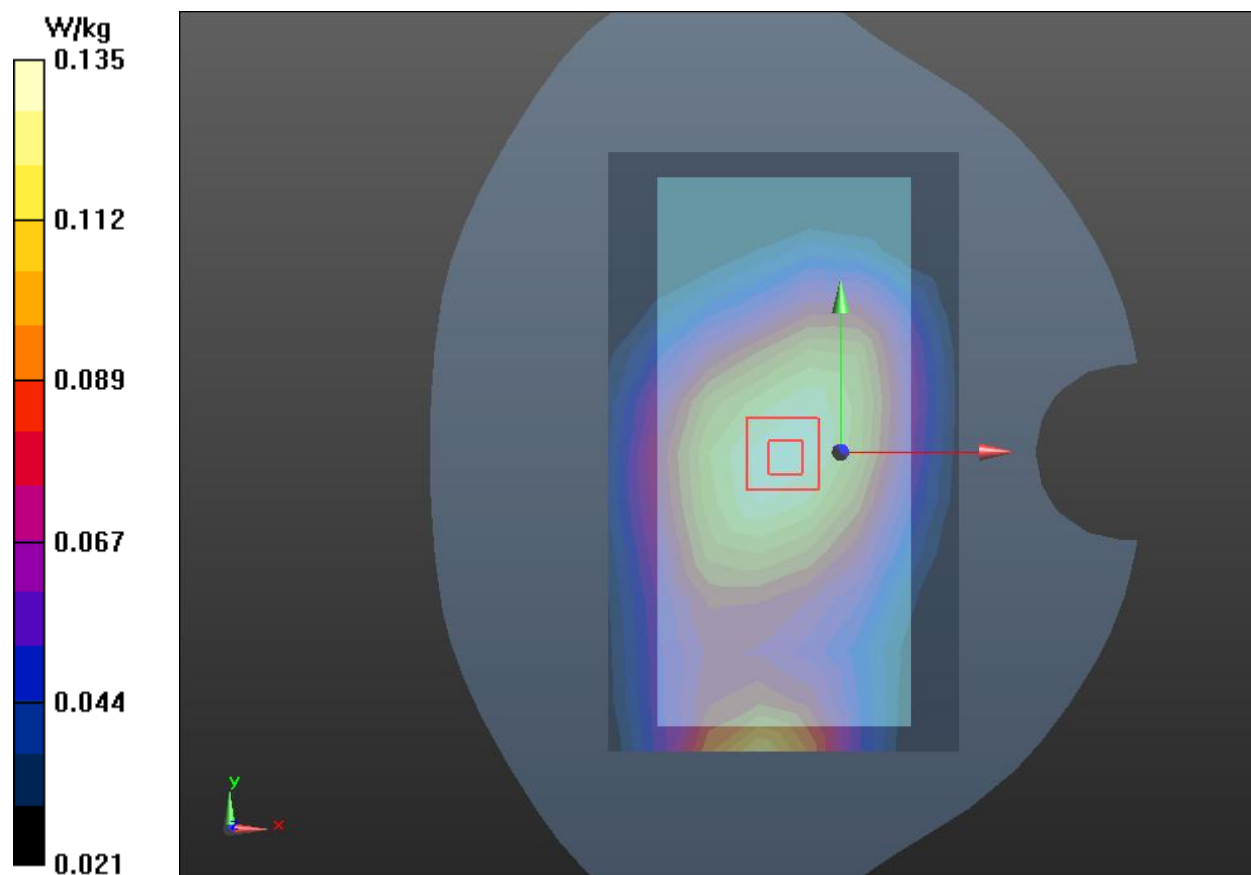
**Back Side Middle/Zoom Scan (5x5x7)/Cube 0:** Measurement grid: dx=8mm, dy=8mm, dz=5mm

Reference Value = 12.14 V/m; Power Drift = 0.01 dB

Peak SAR (extrapolated) = 0.162 W/kg

**SAR(1 g) = 0.128 W/kg; SAR(10 g) = 0.097 W/kg**

Maximum value of SAR (measured) = 0.135 W/kg



## Plot 30 UMTS Band V Bottom Edge Middle (Distance 10mm)

Date: 5/11/2020

Communication System: UID 0, WCDMA Band 5; Frequency: 836.6 MHz; Duty Cycle: 1:1

Medium parameters used:  $f = 837$  MHz;  $\sigma = 0.925$  S/m;  $\epsilon_r = 43.198$ ;  $\rho = 1000$  kg/m<sup>3</sup>

Ambient Temperature: 22.3 °C Liquid Temperature: 21.5 °C

Phantom section: Flat Section

DASY5 Configuration:

Sensor-Surface: 1.4mm (Mechanical Surface Detection)

Probe: EX3DV4 - SN3677; ConvF(9.20, 9.20, 9.20); Calibrated: 6/19/2019;

Electronics: DAE4 SN1317; Calibrated: 10/23/2019

Phantom: SAM1; Type: SAM; Serial: TP-1534

Measurement SW: DASY52, Version 52.10 (1); SEMCAD X Version 14.6.11 (7439)

**Bottom Edge Middle/Area Scan (4x8x1):** Measurement grid: dx=15mm, dy=15mm

Maximum value of SAR (measured) = 0.319 W/kg

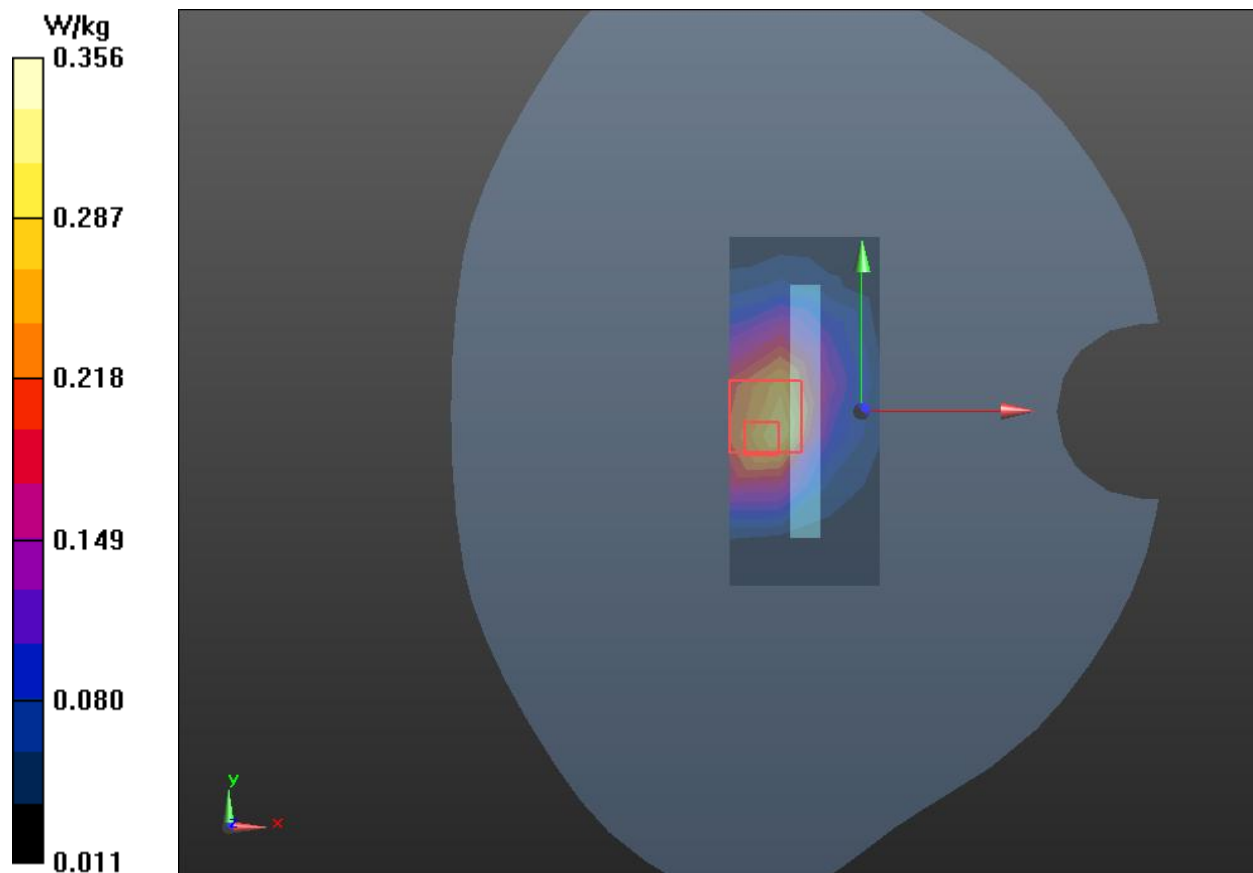
**Bottom Edge Middle/Zoom Scan (5x5x7)/Cube 0:** Measurement grid: dx=8mm, dy=8mm, dz=5mm

Reference Value = 15.20 V/m; Power Drift = 0.03 dB

Peak SAR (extrapolated) = 0.619 W/kg

**SAR(1 g) = 0.322 W/kg; SAR(10 g) = 0.185 W/kg**

Maximum value of SAR (measured) = 0.356 W/kg



## Plot 31 LTE Band 2 1RB Left Cheek High

Date: 5/12/2020

Communication System: UID 0, LTE (0); Frequency: 1900 MHz; Duty Cycle: 1:1

Medium parameters used:  $f = 1900$  MHz;  $\sigma = 1.408$  S/m;  $\epsilon_r = 38.294$ ;  $\rho = 1000$  kg/m<sup>3</sup>

Ambient Temperature: 22.3 °C Liquid Temperature: 21.5 °C

Phantom section: Left Section

DASY5 Configuration:

Sensor-Surface: 1.4mm (Mechanical Surface Detection)

Probe: EX3DV4 - SN3677; ConvF(7.79, 7.79, 7.79); Calibrated: 6/19/2019;

Electronics: DAE4 SN1317; Calibrated: 10/23/2019

Phantom: SAM1; Type: SAM; Serial: TP-1534

Measurement SW: DASY52, Version 52.10 (1); SEMCAD X Version 14.6.11 (7439)

**Left Cheek High/Area Scan (8x13x1):** Measurement grid: dx=15mm, dy=15mm

Maximum value of SAR (measured) = 0.208 W/kg

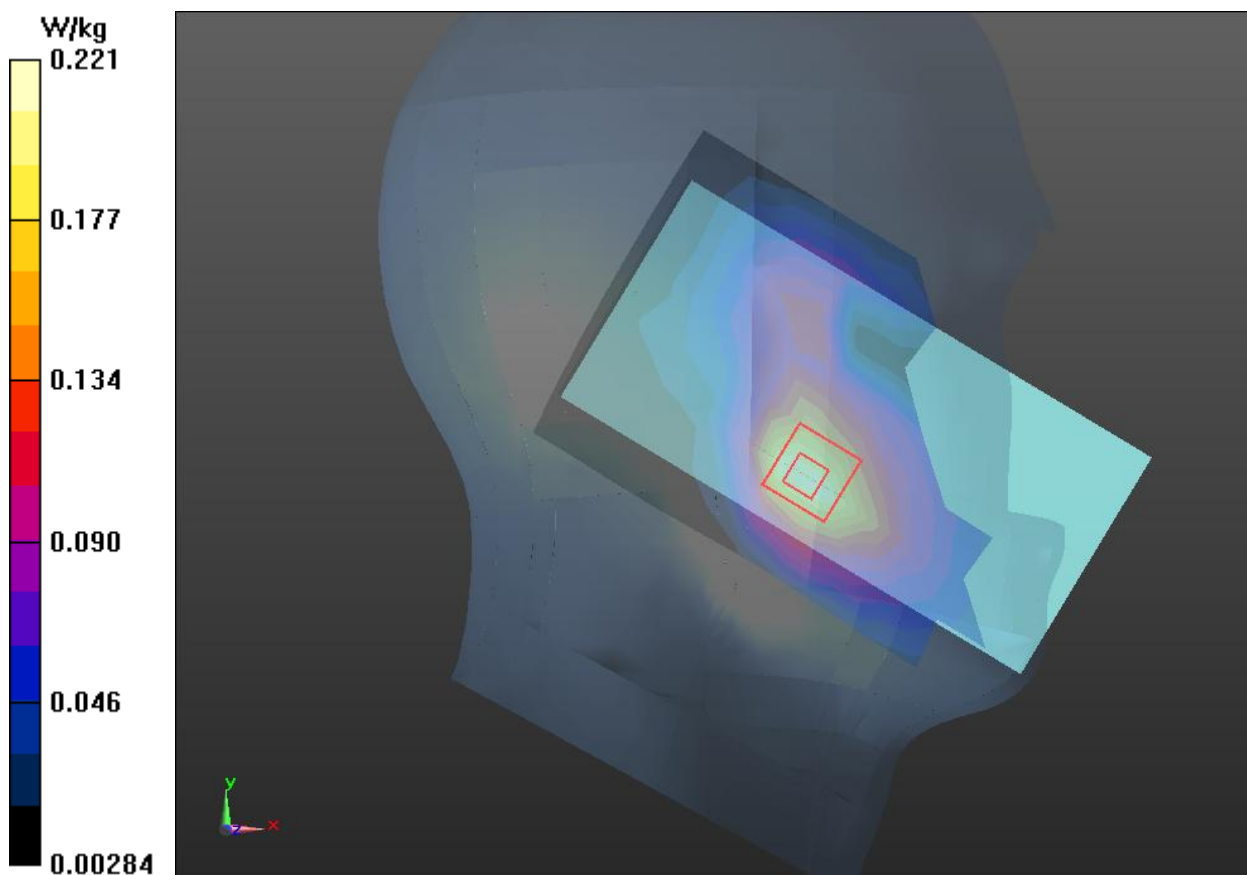
**Left Cheek High/Zoom Scan (5x5x7)/Cube 0:** Measurement grid: dx=8mm, dy=8mm, dz=5mm

Reference Value = 2.981 V/m; Power Drift = 0.080 dB

Peak SAR (extrapolated) = 0.314 W/kg

**SAR(1 g) = 0.204 W/kg; SAR(10 g) = 0.126 W/kg**

Maximum value of SAR (measured) = 0.221 W/kg



## Plot 32 LTE Band 2 1RB Back Side High(Distance 15mm)

Date: 5/12/2020

Communication System: UID 0, LTE (0); Frequency: 1900 MHz; Duty Cycle: 1:1

Medium parameters used:  $f = 1900$  MHz;  $\sigma = 1.408$  S/m;  $\epsilon_r = 38.294$ ;  $\rho = 1000$  kg/m<sup>3</sup>

Ambient Temperature: 22.3 °C Liquid Temperature: 21.5 °C

Phantom section: Flat Section

DASY5 Configuration:

Sensor-Surface: 1.4mm (Mechanical Surface Detection)

Probe: EX3DV4 - SN3677; ConvF(7.79, 7.79, 7.79); Calibrated: 6/19/2019;

Electronics: DAE4 SN1317; Calibrated: 10/23/2019

Phantom: SAM1; Type: SAM; Serial: TP-1534

Measurement SW: DASY52, Version 52.10 (1); SEMCAD X Version 14.6.11 (7439)

**Back Side High/Area Scan (8x14x1):** Measurement grid: dx=15mm, dy=15mm

Maximum value of SAR (measured) = 0.433 W/kg

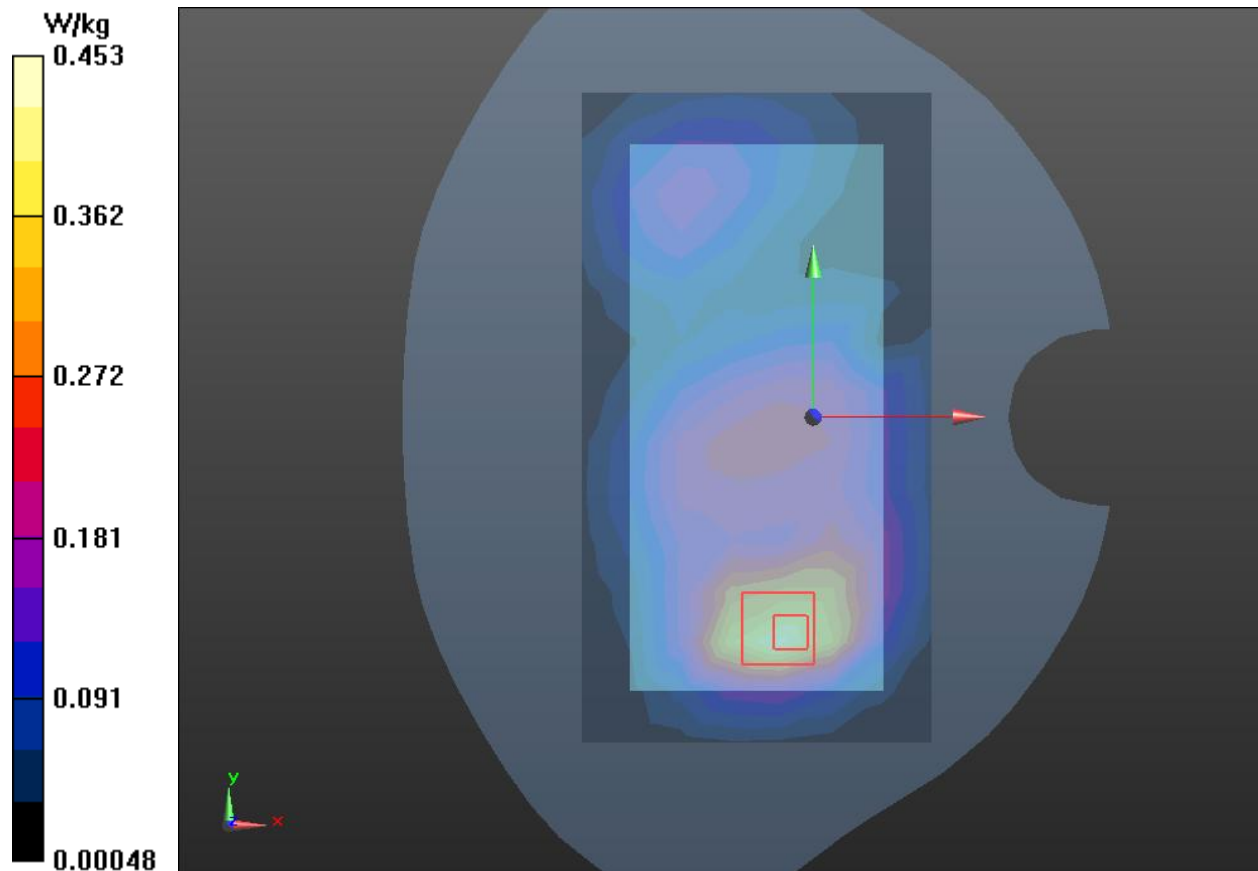
**Back Side High/Zoom Scan (5x5x7)/Cube 0:** Measurement grid: dx=8mm, dy=8mm, dz=5mm

Reference Value = 12.73 V/m; Power Drift = -0.03 dB

Peak SAR (extrapolated) = 0.745 W/kg

**SAR(1 g) = 0.417 W/kg; SAR(10 g) = 0.241 W/kg**

Maximum value of SAR (measured) = 0.453 W/kg



# Plot 33 LTE Band 2 100%RB Bottom Edge Middle (Distance 10mm)

Date: 5/12/2020

Communication System: UID 0, LTE (0); Frequency: 1880 MHz; Duty Cycle: 1:1

Medium parameters used:  $f = 1880$  MHz;  $\sigma = 1.393$  S/m;  $\epsilon_r = 38.344$ ;  $\rho = 1000$  kg/m<sup>3</sup>

Ambient Temperature: 22.3 °C Liquid Temperature: 21.5 °C

Phantom section: Flat Section

DASY5 Configuration:

Sensor-Surface: 1.4mm (Mechanical Surface Detection)

Probe: EX3DV4 - SN3677; ConvF(7.79, 7.79, 7.79); Calibrated: 6/19/2019;

Electronics: DAE4 SN1317; Calibrated: 10/23/2019

Phantom: SAM1; Type: SAM; Serial: TP-1534

Measurement SW: DASY52, Version 52.10 (1); SEMCAD X Version 14.6.11 (7439)

**Bottom Edge Middle/Area Scan (4x8x1):** Measurement grid: dx=15mm, dy=15mm

Maximum value of SAR (measured) = 0.675 W/kg

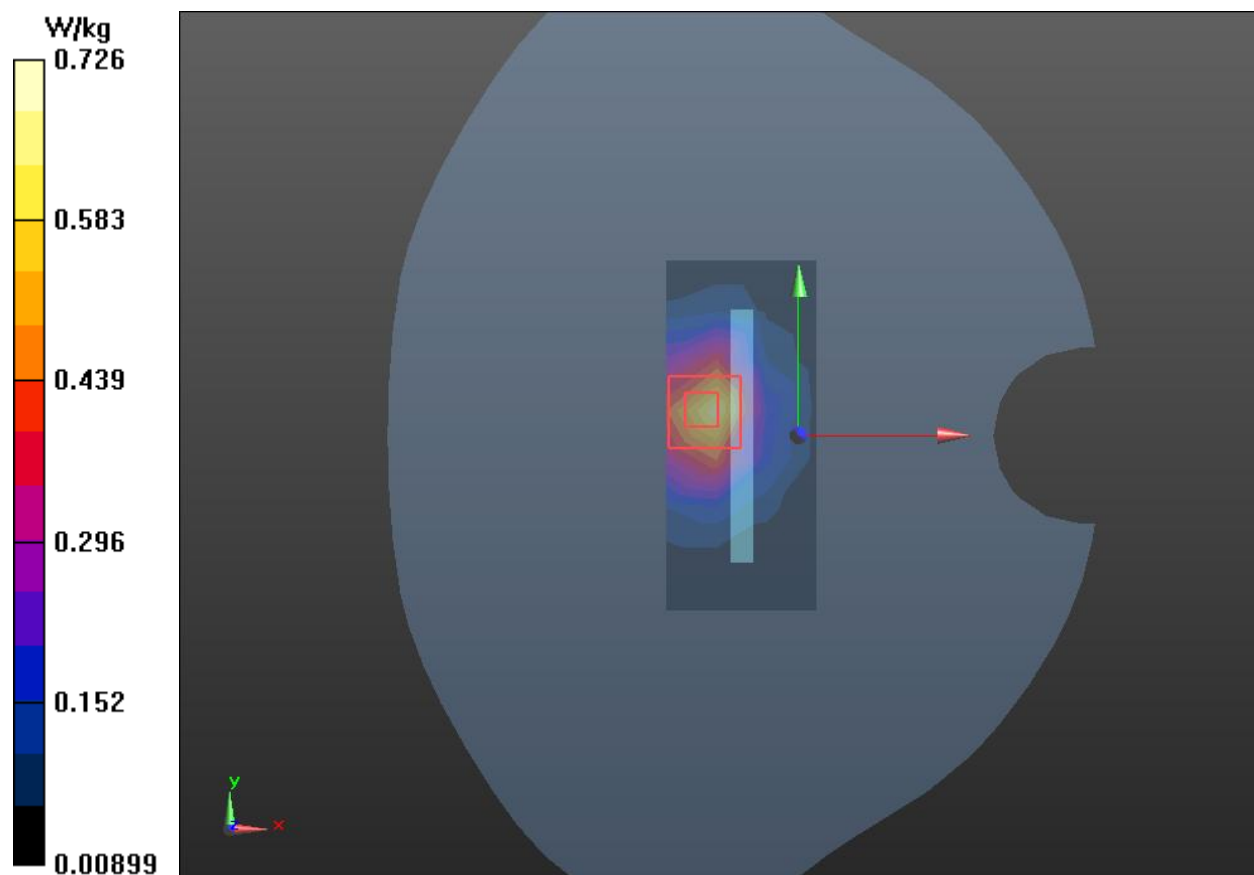
**Bottom Edge Middle/Zoom Scan (5x5x7)/Cube 0:** Measurement grid: dx=8mm, dy=8mm, dz=5mm

Reference Value = 16.99 V/m; Power Drift = 0.041 dB

Peak SAR (extrapolated) = 1.15 W/kg

**SAR(1 g) = 0.652 W/kg; SAR(10 g) = 0.349 W/kg**

Maximum value of SAR (measured) = 0.726 W/kg



## Plot 34 LTE Band 4 1RB Left Cheek High

Date: 5/13/2020

Communication System: UID 0, LTE (0); Frequency: 1745 MHz; Duty Cycle: 1:1

Medium parameters used:  $f = 1745$  MHz;  $\sigma = 1.301$  S/m;  $\epsilon_r = 38.753$ ;  $\rho = 1000$  kg/m<sup>3</sup>

Ambient Temperature: 22.3 °C Liquid Temperature: 21.5 °C

Phantom section: Left Section

DASY5 Configuration:

Sensor-Surface: 1.4mm (Mechanical Surface Detection)

Probe: EX3DV4 - SN3677; ConvF(8.21, 8.21, 8.21); Calibrated: 6/19/2019;

Electronics: DAE4 SN1317; Calibrated: 10/23/2019

Phantom: SAM1; Type: SAM; Serial: TP-1534

Measurement SW: DASY52, Version 52.10 (1); SEMCAD X Version 14.6.11 (7439)

**Left Cheek High/Area Scan (8x13x1):** Measurement grid: dx=15mm, dy=15mm

Maximum value of SAR (measured) = 0.188 W/kg

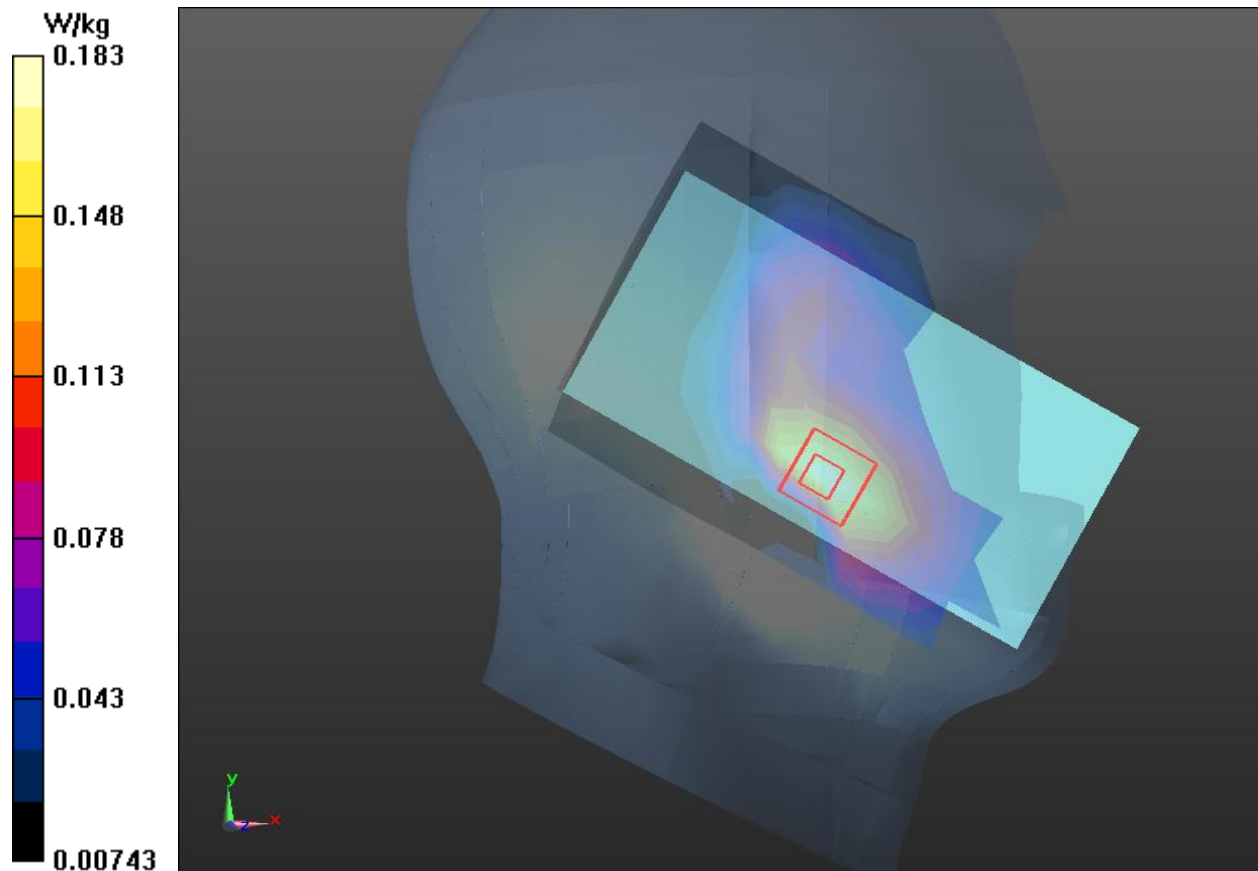
**Left Cheek High/Zoom Scan (5x5x7)/Cube 0:** Measurement grid: dx=8mm, dy=8mm, dz=5mm

Reference Value = 1.779 V/m; Power Drift = 0.041 dB

Peak SAR (extrapolated) = 0.262 W/kg

**SAR(1 g) = 0.174 W/kg; SAR(10 g) = 0.110 W/kg**

Maximum value of SAR (measured) = 0.183 W/kg





## Plot 35 LTE Band 4 1RB Back Side High (Distance 15mm)

Date: 5/13/2020

Communication System: UID 0, LTE (0); Frequency: 1745 MHz; Duty Cycle: 1:1

Medium parameters used:  $f = 1745$  MHz;  $\sigma = 1.301$  S/m;  $\epsilon_r = 38.753$ ;  $\rho = 1000$  kg/m<sup>3</sup>

Ambient Temperature: 22.3 °C Liquid Temperature: 21.5 °C

Phantom section: Flat Section

DASY5 Configuration:

Sensor-Surface: 1.4mm (Mechanical Surface Detection)

Probe: EX3DV4 - SN3677; ConvF(8.21, 8.21, 8.21); Calibrated: 6/19/2019;

Electronics: DAE4 SN1317; Calibrated: 10/23/2019

Phantom: SAM1; Type: SAM; Serial: TP-1534

Measurement SW: DASY52, Version 52.10 (1); SEMCAD X Version 14.6.11 (7439)

**Back Side High/Area Scan (8x14x1):** Measurement grid: dx=15mm, dy=15mm

Maximum value of SAR (measured) = 0.480 W/kg

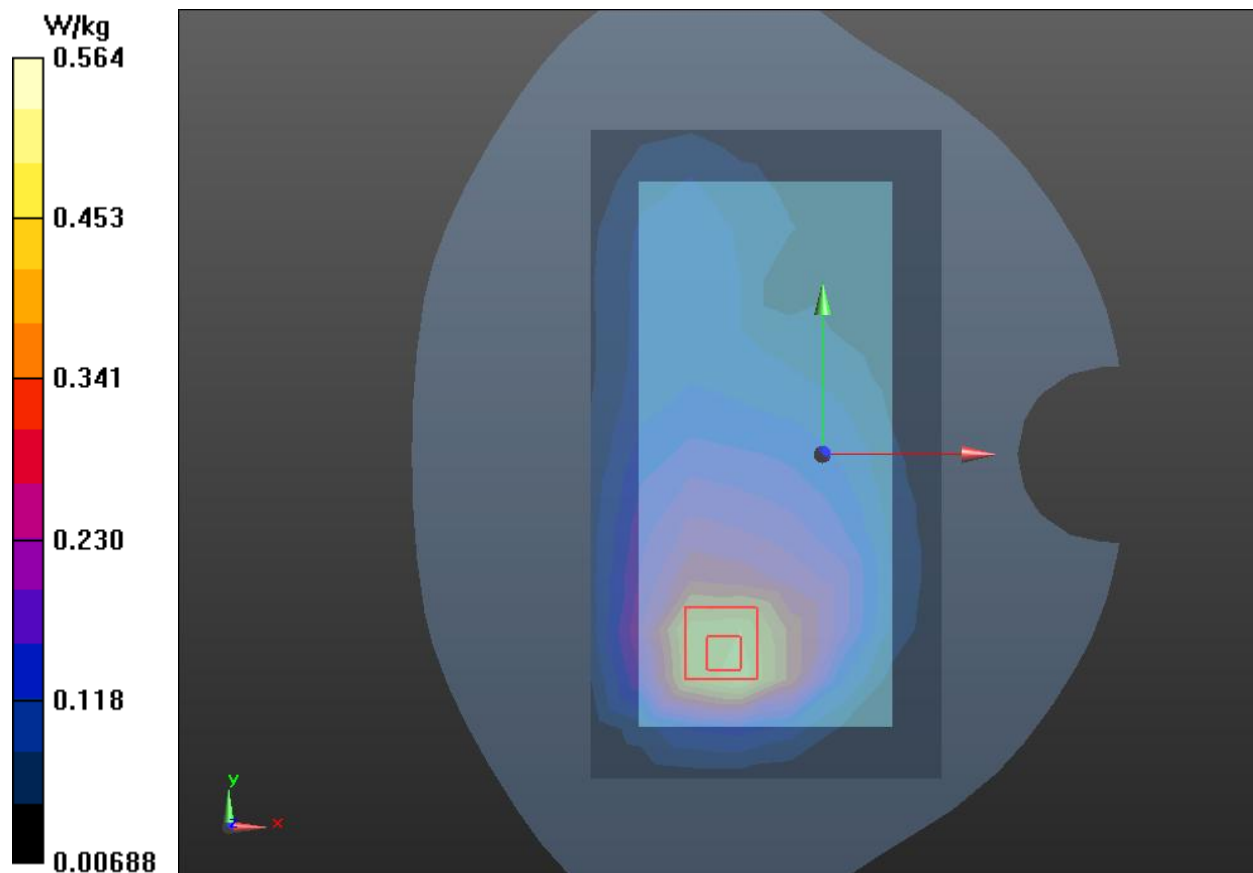
**Back Side High/Zoom Scan (5x5x7)/Cube 0:** Measurement grid: dx=8mm, dy=8mm, dz=5mm

Reference Value = 10.92 V/m; Power Drift = 0.12 dB

Peak SAR (extrapolated) = 0.993 W/kg

**SAR(1 g) = 0.519 W/kg; SAR(10 g) = 0.307 W/kg**

Maximum value of SAR (measured) = 0.564 W/kg





# Plot 36 LTE Band 4 50%RB Bottom Edge Low (Distance 10mm)

Date: 5/13/2020

Communication System: UID 0, LTE (0); Frequency: 1720 MHz; Duty Cycle: 1:1

Medium parameters used:  $f = 1720$  MHz;  $\sigma = 1.303$  S/m;  $\epsilon_r = 39.467$ ;  $\rho = 1000$  kg/m<sup>3</sup>

Ambient Temperature: 22.3 °C Liquid Temperature: 21.5 °C

Phantom section: Flat Section

DASY5 Configuration:

Sensor-Surface: 1.4mm (Mechanical Surface Detection)

Probe: EX3DV4 - SN3677; ConvF(8.21, 8.21, 8.21); Calibrated: 6/19/2019;

Electronics: DAE4 SN1317; Calibrated: 10/23/2019

Phantom: SAM1; Type: SAM; Serial: TP-1534

Measurement SW: DASY52, Version 52.10 (1); SEMCAD X Version 14.6.11 (7439)

**Bottom Edge Low/Area Scan (4x8x1):** Measurement grid: dx=15mm, dy=15mm

Maximum value of SAR (measured) = 0.877 W/kg

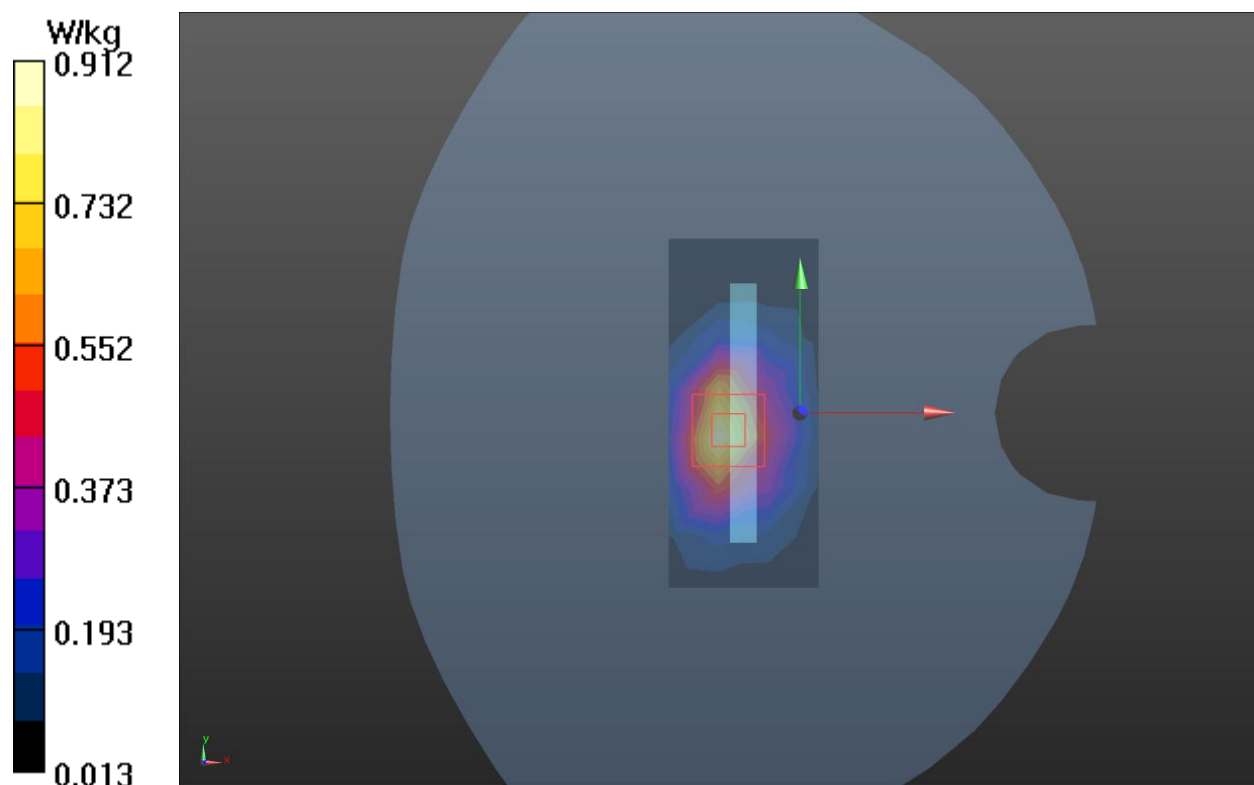
**Bottom Edge Low/Zoom Scan (5x5x7)/Cube 0:** Measurement grid: dx=8mm, dy=8mm, dz=5mm

Reference Value = 24.98 V/m; Power Drift = 0.18 dB

Peak SAR (extrapolated) = 1.39 W/kg

**SAR(1 g) = 0.830 W/kg; SAR(10 g) = 0.459 W/kg**

Maximum value of SAR (measured) = 0.912 W/kg



## Plot 37 LTE Band 4 1RB Bottom Edge Low (Distance 0mm)

Date: 5/13/2020

Communication System: UID 0, LTE (0); Frequency: 1720 MHz; Duty Cycle: 1:1

Medium parameters used:  $f = 1720$  MHz;  $\sigma = 1.284$  S/m;  $\epsilon_r = 38.855$ ;  $\rho = 1000$  kg/m<sup>3</sup>

Ambient Temperature: 22.3 °C Liquid Temperature: 21.5 °C

Phantom section: Flat Section

DASY5 Configuration:

Sensor-Surface: 1.4mm (Mechanical Surface Detection)

Probe: EX3DV4 - SN3677; ConvF(8.21, 8.21, 8.21); Calibrated: 6/19/2019;

Electronics: DAE4 SN1317; Calibrated: 10/23/2019

Phantom: SAM1; Type: SAM; Serial: TP-1534

Measurement SW: DASY52, Version 52.10 (1); SEMCAD X Version 14.6.11 (7439)

**Bottom Edge Low/Area Scan (4x8x1):** Measurement grid: dx=15mm, dy=15mm

Maximum value of SAR (measured) = 3.23 W/kg

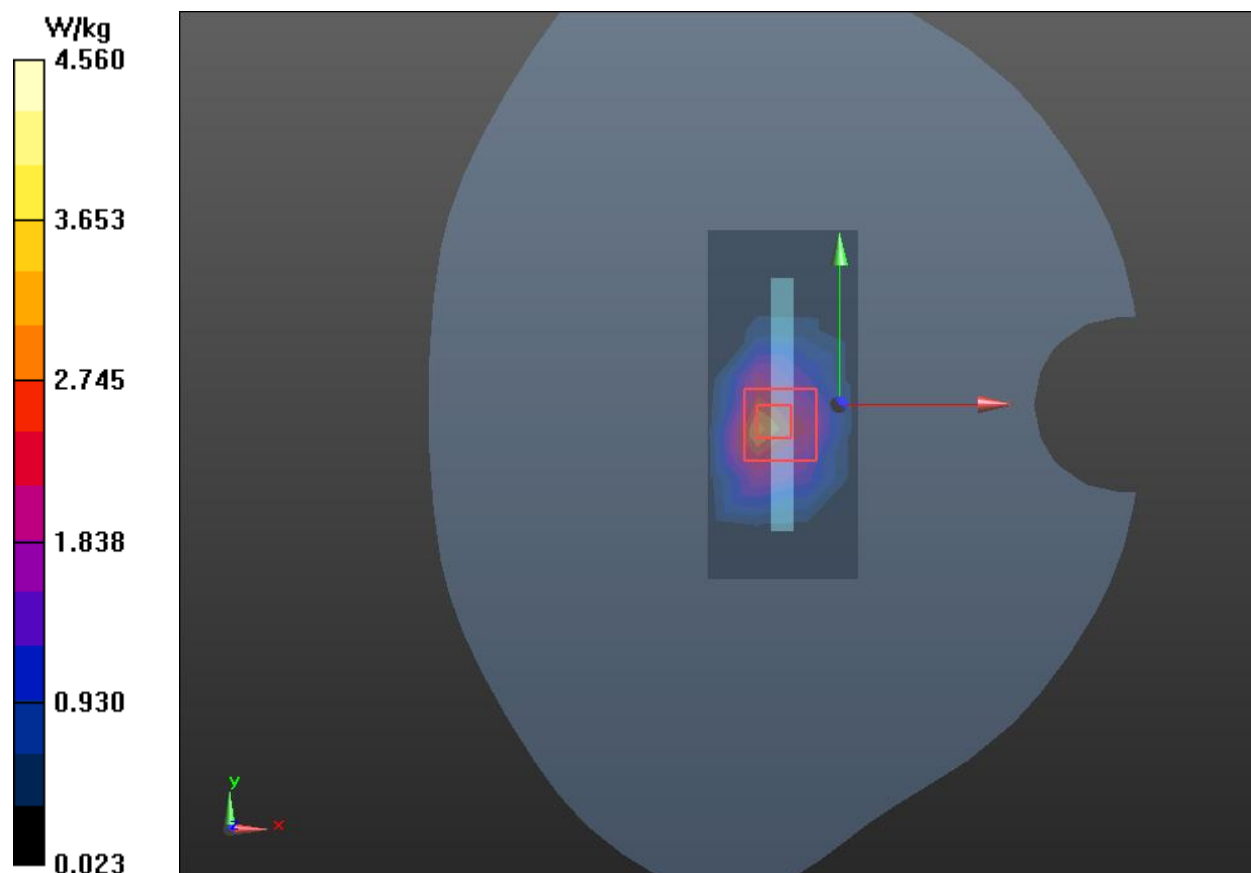
**Bottom Edge Low/Zoom Scan (5x5x7)/Cube 0:** Measurement grid: dx=8mm, dy=8mm, dz=5mm

Reference Value = 58.49 V/m; Power Drift = 0.09 dB

Peak SAR (extrapolated) = 8.09 W/kg

**SAR(1 g) = 4.03 W/kg; SAR(10 g) = 1.88 W/kg**

Maximum value of SAR (measured) = 4.56 W/kg



# Plot 38 LTE Band 5 1RB Right Cheek Middle(SIM2)

Date: 5/14/2020

Communication System: UID 0, LTE (0); Frequency: 836.5 MHz; Duty Cycle: 1:1

Medium parameters used (interpolated):  $f = 836.5$  MHz;  $\sigma = 0.923$  S/m;  $\epsilon_r = 42.199$ ;  $\rho = 1000$  kg/m<sup>3</sup>

Ambient Temperature: 22.3 °C Liquid Temperature: 21.5 °C

Phantom section: Right Section

DASY5 Configuration:

Sensor-Surface: 1.4mm (Mechanical Surface Detection)

Probe: EX3DV4 - SN3677; ConvF(9.20, 9.20, 9.20); Calibrated: 6/19/2019;

Electronics: DAE4 SN1317; Calibrated: 10/23/2019

Phantom: SAM1; Type: SAM; Serial: TP-1534

Measurement SW: DASY52, Version 52.10 (1); SEMCAD X Version 14.6.11 (7439)

**Right Cheek Middle/Area Scan (8x14x1):** Measurement grid: dx=15mm, dy=15mm

Maximum value of SAR (measured) = 0.165 W/kg

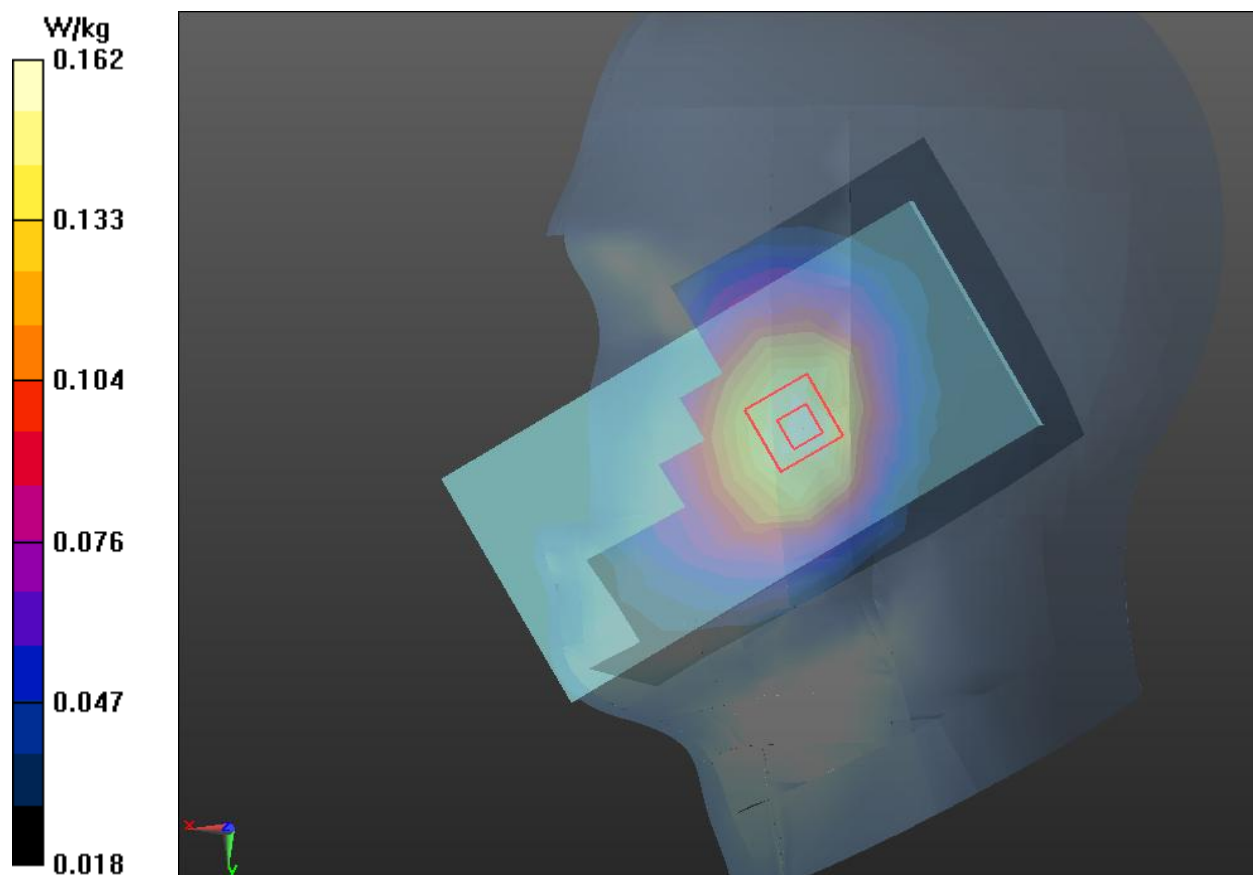
**Right Cheek Middle/Zoom Scan (5x5x7)/Cube 0:** Measurement grid: dx=8mm, dy=8mm, dz=5mm

Reference Value = 4.283 V/m; Power Drift = 0.051 dB

Peak SAR (extrapolated) = 0.190 W/kg

**SAR(1 g) = 0.155 W/kg; SAR(10 g) = 0.118 W/kg**

Maximum value of SAR (measured) = 0.162 W/kg



# Plot 39 LTE Band 5 1RB Front Side Middle(Distance 15mm)

Date: 5/14/2020

Communication System: UID 0, LTE (0); Frequency: 836.5 MHz;Duty Cycle: 1:1

Medium parameters used (interpolated):  $f = 836.5$  MHz;  $\sigma = 0.923$  S/m;  $\epsilon_r = 42.199$ ;  $\rho = 1000$  kg/m<sup>3</sup>

Ambient Temperature:22.3 °C Liquid Temperature: 21.5°C

Phantom section: Flat Section

DASY5 Configuration:

Sensor-Surface: 1.4mm (Mechanical Surface Detection)

Probe: EX3DV4 - SN3677; ConvF(9.20, 9.20, 9.20); Calibrated: 6/19/2019;

Electronics: DAE4 SN1317; Calibrated: 10/23/2019

Phantom: SAM1; Type: SAM; Serial: TP-1534

Measurement SW: DASY52, Version 52.10 (1); SEMCAD X Version 14.6.11 (7439)

**Front Side Middle/Area Scan (8x13x1):** Measurement grid: dx=15mm, dy=15mm

Maximum value of SAR (measured) = 0.211 W/kg

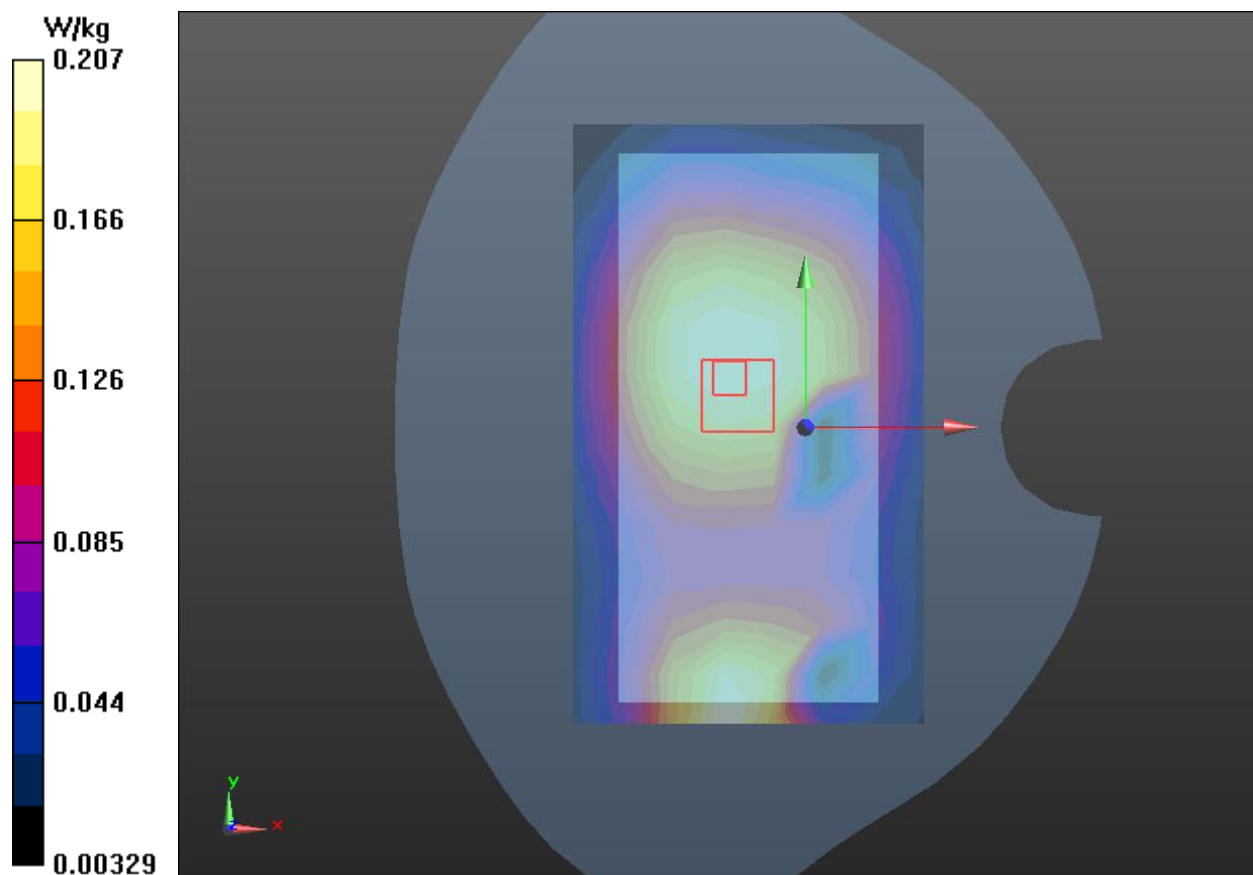
**Front Side Middle/Zoom Scan (5x5x7)/Cube 0:** Measurement grid: dx=8mm, dy=8mm, dz=5mm

Reference Value = 14.04 V/m; Power Drift = -0.02 dB

Peak SAR (extrapolated) = 0.251 W/kg

**SAR(1 g) = 0.195 W/kg; SAR(10 g) = 0.144 W/kg**

Maximum value of SAR (measured) = 0.207 W/kg



## Plot 40 LTE Band 5 1RB Bottom Edge Middle (Distance 10mm)

Date: 5/14/2020

Communication System: UID 0, LTE (0); Frequency: 836.5 MHz; Duty Cycle: 1:1

Medium parameters used (interpolated):  $f = 836.5$  MHz;  $\sigma = 0.923$  S/m;  $\epsilon_r = 42.199$ ;  $\rho = 1000$  kg/m<sup>3</sup>

Ambient Temperature: 22.3 °C Liquid Temperature: 21.5 °C

Phantom section: Flat Section

DASY5 Configuration:

Sensor-Surface: 1.4mm (Mechanical Surface Detection)

Probe: EX3DV4 - SN3677; ConvF(9.20, 9.20, 9.20); Calibrated: 6/19/2019;

Electronics: DAE4 SN1317; Calibrated: 10/23/2019

Phantom: SAM1; Type: SAM; Serial: TP-1534

Measurement SW: DASY52, Version 52.10 (1); SEMCAD X Version 14.6.11 (7439)

**Bottom Edge Middle/Area Scan (4x8x1):** Measurement grid: dx=15mm, dy=15mm

Maximum value of SAR (measured) = 0.306 W/kg

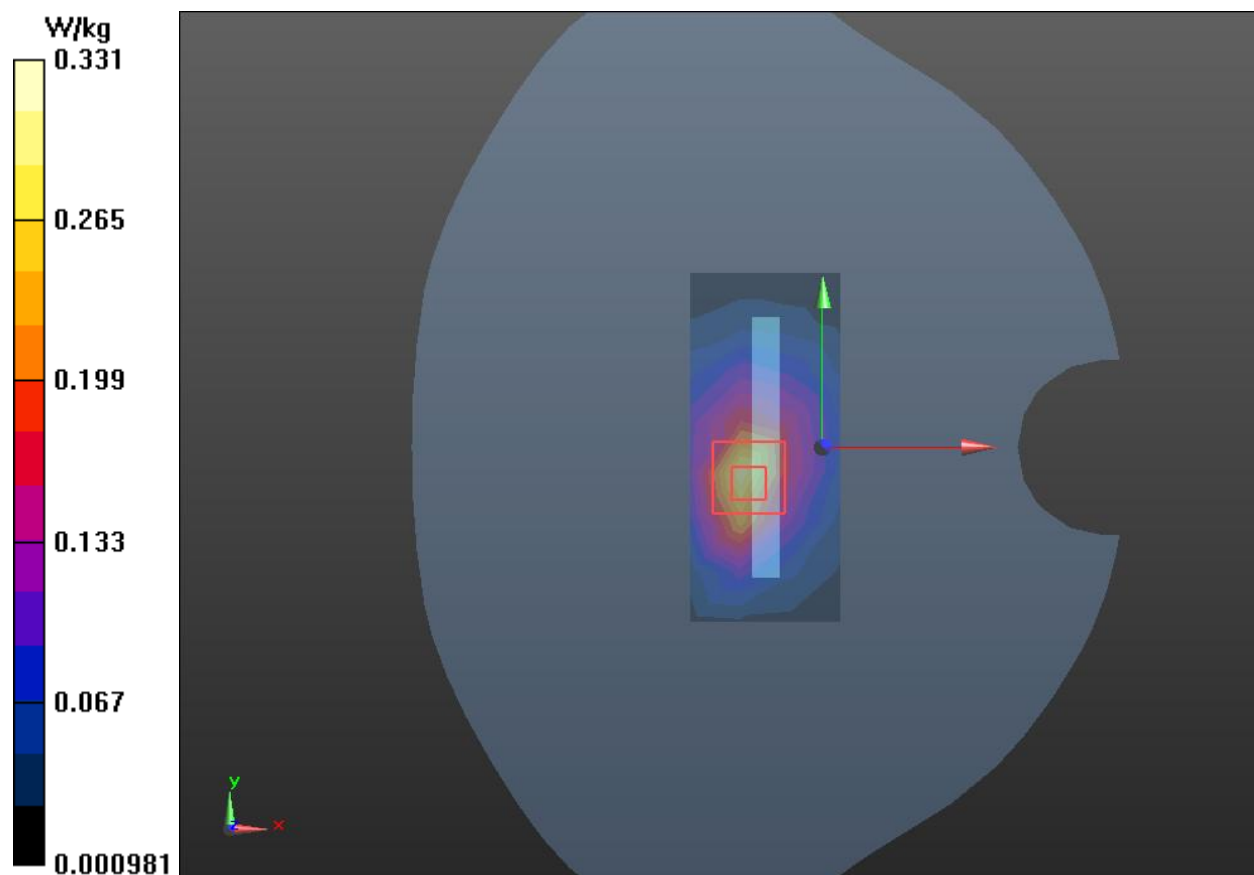
**Bottom Edge Middle/Zoom Scan (5x5x7)/Cube 0:** Measurement grid: dx=8mm, dy=8mm, dz=5mm

Reference Value = 15.67 V/m; Power Drift = 0.04 dB

Peak SAR (extrapolated) = 0.550 W/kg

**SAR(1 g) = 0.287 W/kg; SAR(10 g) = 0.154 W/kg**

Maximum value of SAR (measured) = 0.331 W/kg



## Plot 41 LTE Band 7 1RB Right Cheek Middle

Date: 5/15/2020

Communication System: UID 0, LTE (0); Frequency: 2535 MHz; Duty Cycle: 1:1

Medium parameters used:  $f = 2535$  MHz;  $\sigma = 1.905$  S/m;  $\epsilon_r = 38.267$ ;  $\rho = 1000$  kg/m<sup>3</sup>

Ambient Temperature: 22.3 °C Liquid Temperature: 21.5 °C

Phantom section: Right Section

DASY5 Configuration:

Sensor-Surface: 1.4mm (Mechanical Surface Detection)

Probe: EX3DV4 - SN3677; ConvF(7.20, 7.20, 7.20); Calibrated: 6/19/2019;

Electronics: DAE4 SN1317; Calibrated: 10/23/2019

Phantom: SAM1; Type: SAM; Serial: TP-1534

Measurement SW: DASY52, Version 52.10 (1); SEMCAD X Version 14.6.11 (7439)

**Right Cheek Middle/Area Scan (10x17x1):** Measurement grid: dx=12mm, dy=12mm

Maximum value of SAR (measured) = 0.194 W/kg

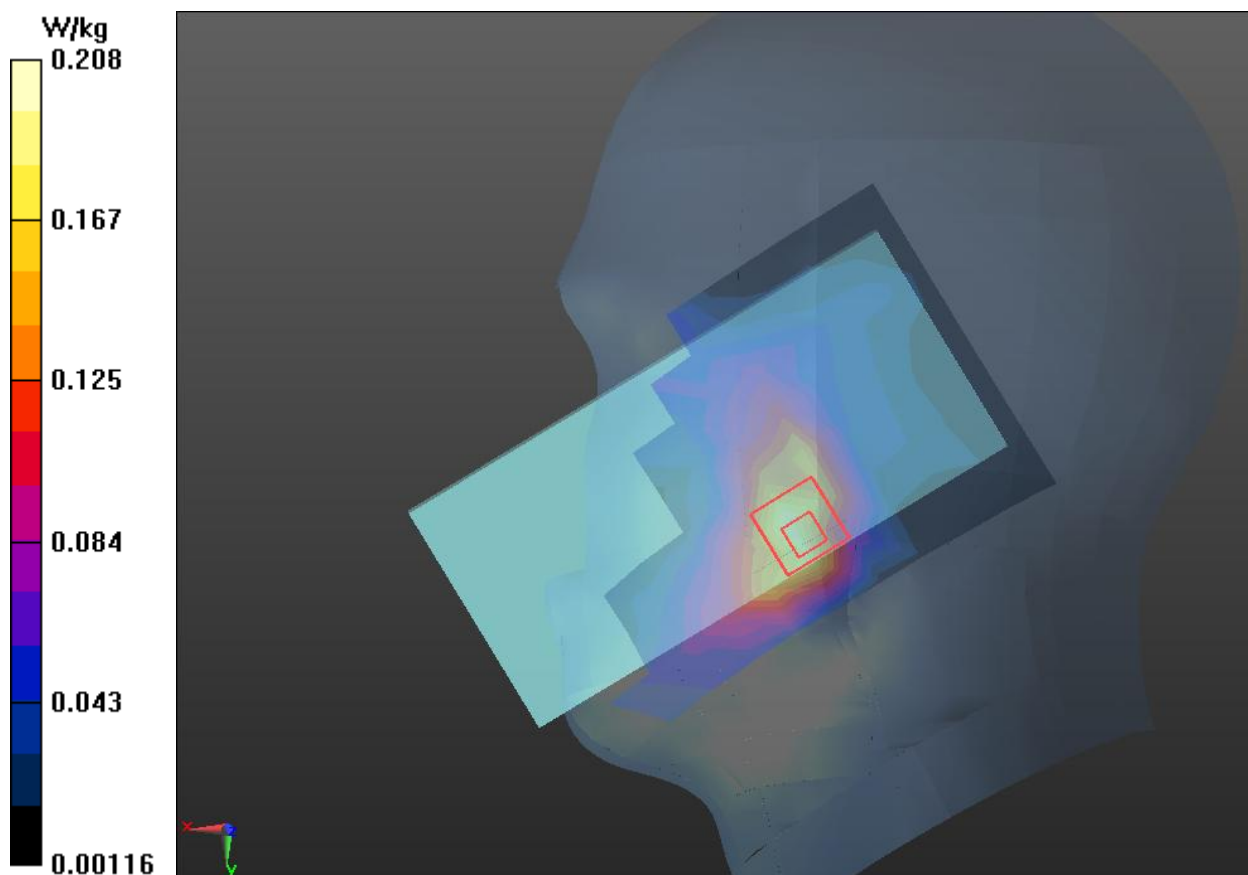
**Right Cheek Middle/Zoom Scan (7x7x7)/Cube 0:** Measurement grid: dx=5mm, dy=5mm, dz=5mm

Reference Value = 1.723 V/m; Power Drift = 0.174 dB

Peak SAR (extrapolated) = 0.355 W/kg

**SAR(1 g) = 0.195 W/kg; SAR(10 g) = 0.105 W/kg**

Maximum value of SAR (measured) = 0.208 W/kg



## Plot 42 LTE Band 7 1RB Back Side Middle(Distance 15mm)

Date: 5/15/2020

Communication System: UID 0, LTE (0); Frequency: 2535 MHz; Duty Cycle: 1:1

Medium parameters used:  $f = 2535$  MHz;  $\sigma = 1.905$  S/m;  $\epsilon_r = 38.267$ ;  $\rho = 1000$  kg/m<sup>3</sup>

Ambient Temperature: 22.3 °C Liquid Temperature: 21.5 °C

Phantom section: Flat Section

DASY5 Configuration:

Sensor-Surface: 1.4mm (Mechanical Surface Detection)

Probe: EX3DV4 - SN3677; ConvF(7.20, 7.20, 7.20); Calibrated: 6/19/2019;

Electronics: DAE4 SN1317; Calibrated: 10/23/2019

Phantom: SAM1; Type: SAM; Serial: TP-1534

Measurement SW: DASY52, Version 52.10 (1); SEMCAD X Version 14.6.11 (7439)

**Back Side Middle/Area Scan (10x18x1):** Measurement grid: dx=12mm, dy=12mm

Maximum value of SAR (measured) = 0.364 W/kg

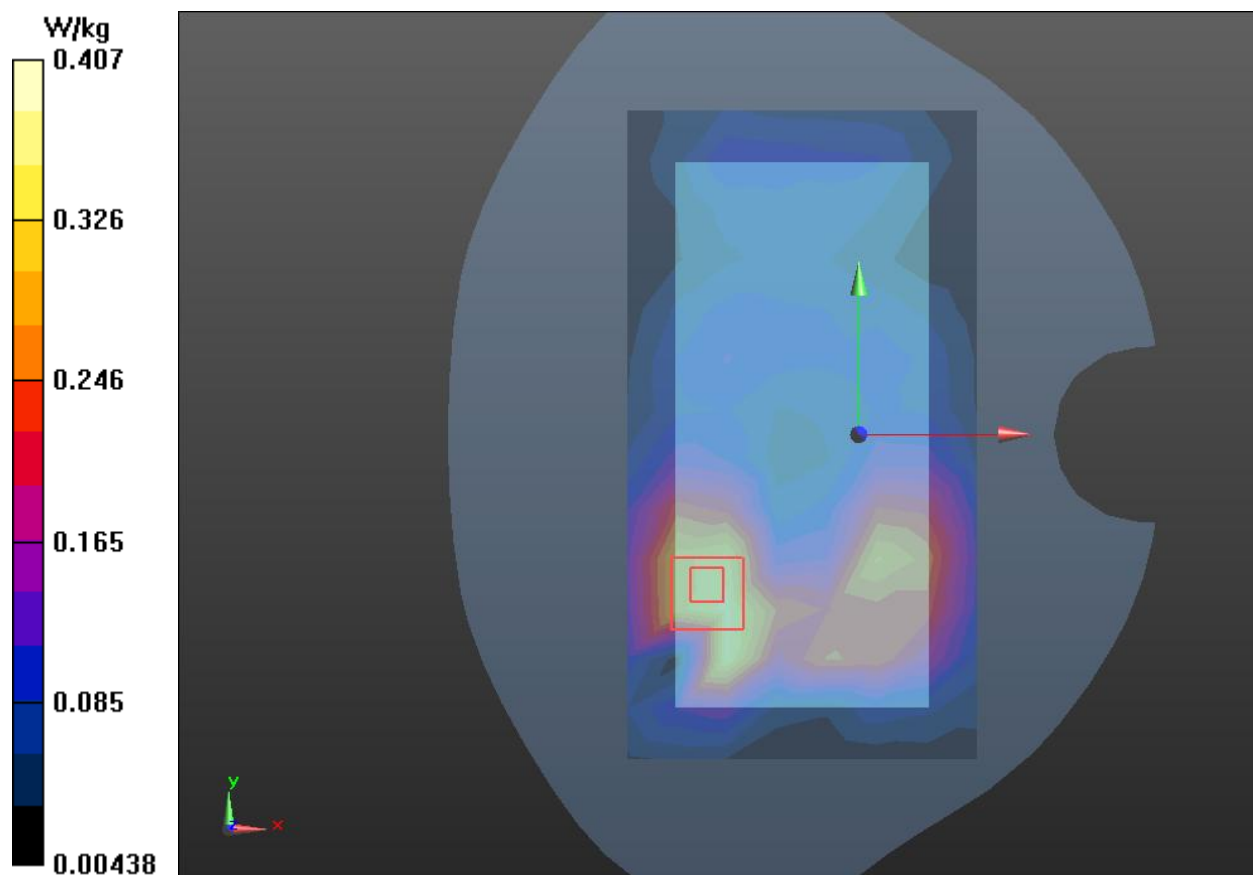
**Back Side Middle/Zoom Scan (7x7x7)/Cube 0:** Measurement grid: dx=5mm, dy=5mm, dz=5mm

Reference Value = 4.793 V/m; Power Drift = 0.01 dB

Peak SAR (extrapolated) = 0.720 W/kg

**SAR(1 g) = 0.373 W/kg; SAR(10 g) = 0.202 W/kg**

Maximum value of SAR (measured) = 0.407 W/kg





# Plot 43 LTE Band 7 1RB Right Edge Middle(Distance 10mm)

Date: 5/15/2020

Communication System: UID 0, LTE (0); Frequency: 2535 MHz;Duty Cycle: 1:1

Medium parameters used:  $f = 2535$  MHz;  $\sigma = 1.905$  S/m;  $\epsilon_r = 38.267$ ;  $\rho = 1000$  kg/m<sup>3</sup>

Ambient Temperature:22.3 °C Liquid Temperature: 21.5°C

Phantom section: Flat Section

DASY5 Configuration:

Sensor-Surface: 1.4mm (Mechanical Surface Detection)

Probe: EX3DV4 - SN3677; ConvF(7.20, 7.20, 7.20); Calibrated: 6/19/2019;

Electronics: DAE4 SN1317; Calibrated: 10/23/2019

Phantom: SAM1; Type: SAM; Serial: TP-1534

Measurement SW: DASY52, Version 52.10 (1); SEMCAD X Version 14.6.11 (7439)

**Right Edge Middle/Area Scan (5x18x1):** Measurement grid: dx=12mm, dy=12mm

Maximum value of SAR (measured) = 0.354 W/kg

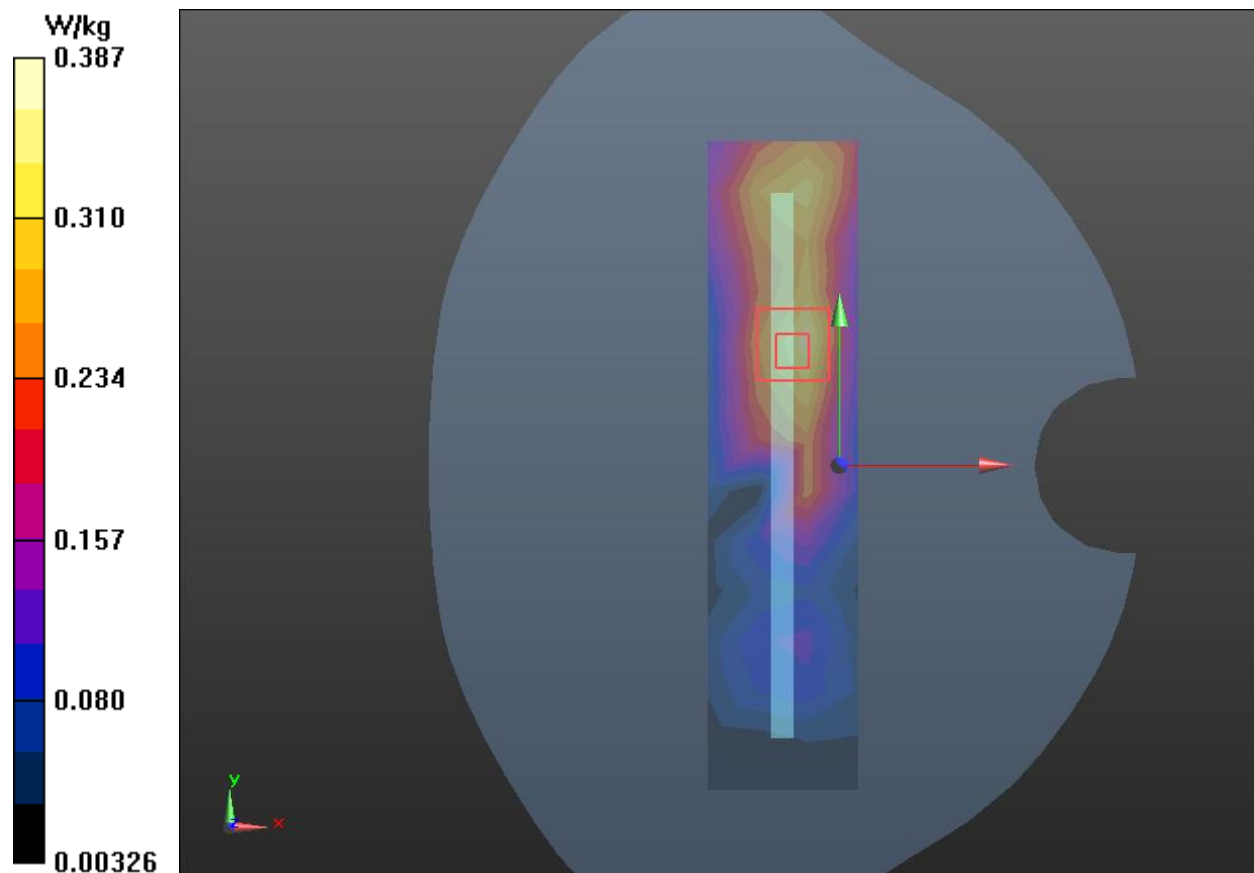
**Right Edge Middle/Zoom Scan (7x7x7)/Cube 0:** Measurement grid: dx=5mm, dy=5mm, dz=5mm

Reference Value = 12.22 V/m; Power Drift = -0.07 dB

Peak SAR (extrapolated) = 0.687 W/kg

**SAR(1 g) = 0.353 W/kg; SAR(10 g) = 0.186 W/kg**

Maximum value of SAR (measured) = 0.387 W/kg



## Plot 44 LTE Band 38 50%RB Right Cheek Middle

Date: 6/8/2020

Communication System: UID 0, LTE (0); Frequency: 2595 MHz; Duty Cycle: 1:1.58

Medium parameters used:  $f = 2595$  MHz;  $\sigma = 1.973$  S/m;  $\epsilon_r = 38.008$ ;  $\rho = 1000$  kg/m<sup>3</sup>

Ambient Temperature: 22.3 °C Liquid Temperature: 21.5 °C

Phantom section: Right Section

DASY5 Configuration:

Sensor-Surface: 1.4mm (Mechanical Surface Detection)

Probe: EX3DV4 - SN3677; ConvF(7.20, 7.20, 7.20); Calibrated: 6/19/2019;

Electronics: DAE4 SN1317; Calibrated: 10/23/2019

Phantom: SAM1; Type: SAM; Serial: TP-1534

Measurement SW: DASY52, Version 52.10 (1); SEMCAD X Version 14.6.11 (7439)

**Right Cheek Middle/Area Scan (10x17x1):** Measurement grid: dx=12mm, dy=12mm

Maximum value of SAR (measured) = 0.118 W/kg

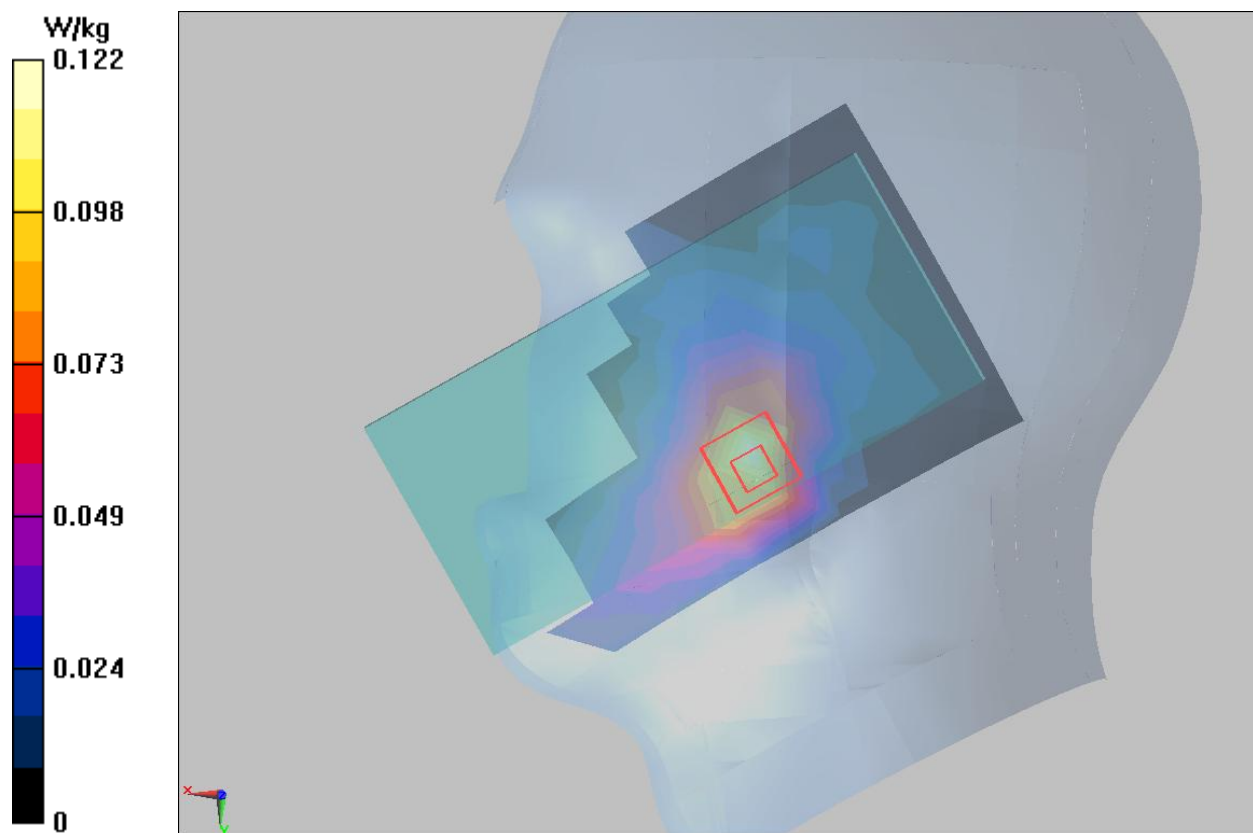
**Right Cheek Middle/Zoom Scan (7x7x7)/Cube 0:** Measurement grid: dx=5mm, dy=5mm, dz=5mm

Reference Value = 1.432 V/m; Power Drift = 0.098 dB

Peak SAR (extrapolated) = 0.224 W/kg

**SAR(1 g) = 0.115 W/kg; SAR(10 g) = 0.060 W/kg**

Maximum value of SAR (measured) = 0.122 W/kg



## Plot 45 LTE Band 38 1RB Back Side High (Distance 15mm)

Date: 6/8/2020

Communication System: UID 0, LTE (0); Frequency: 2610 MHz; Duty Cycle: 1:1.58

Medium parameters used:  $f = 2610$  MHz;  $\sigma = 1.987$  S/m;  $\epsilon_r = 37.993$ ;  $\rho = 1000$  kg/m<sup>3</sup>

Ambient Temperature: 22.3 °C Liquid Temperature: 21.5 °C

Phantom section: Flat Section

DASY5 Configuration:

Sensor-Surface: 1.4mm (Mechanical Surface Detection)

Probe: EX3DV4 - SN3677; ConvF(7.20, 7.20, 7.20); Calibrated: 6/19/2019;

Electronics: DAE4 SN1317; Calibrated: 10/23/2019

Phantom: SAM1; Type: SAM; Serial: TP-1534

Measurement SW: DASY52, Version 52.10 (1); SEMCAD X Version 14.6.11 (7439)

**Back Side High/Area Scan (10x18x1):** Measurement grid: dx=12mm, dy=12mm

Maximum value of SAR (measured) = 0.267 W/kg

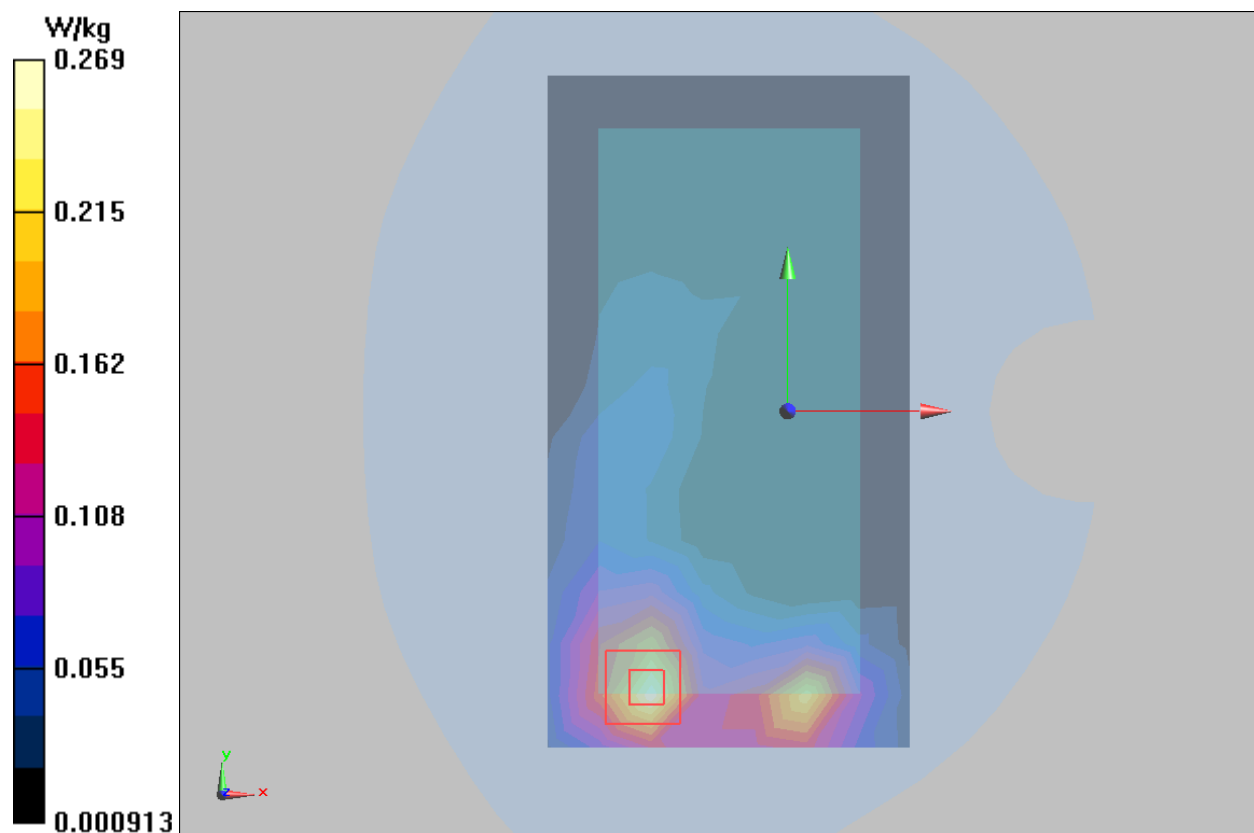
**Back Side High/Zoom Scan (7x7x7)/Cube 0:** Measurement grid: dx=5mm, dy=5mm, dz=5mm

Reference Value = 2.599 V/m; Power Drift = 0.07 dB

Peak SAR (extrapolated) = 0.503 W/kg

**SAR(1 g) = 0.241 W/kg; SAR(10 g) = 0.118 W/kg**

Maximum value of SAR (measured) = 0.269 W/kg



## Plot 46 LTE Band 38 50%RB Bottom Edge Low (Distance 10mm)

Date: 6/8/2020

Communication System: UID 0, LTE (0); Frequency: 2580 MHz; Duty Cycle: 1:1.58

Medium parameters used:  $f = 2580$  MHz;  $\sigma = 1.954$  S/m;  $\epsilon_r = 38.099$ ;  $\rho = 1000$  kg/m<sup>3</sup>

Ambient Temperature: 22.3 °C Liquid Temperature: 21.5 °C

Phantom section: Flat Section

DASY5 Configuration:

Sensor-Surface: 1.4mm (Mechanical Surface Detection)

Probe: EX3DV4 - SN3677; ConvF(7.20, 7.20, 7.20); Calibrated: 6/19/2019;

Electronics: DAE4 SN1317; Calibrated: 10/23/2019

Phantom: SAM1; Type: SAM; Serial: TP-1534

Measurement SW: DASY52, Version 52.10 (1); SEMCAD X Version 14.6.11 (7439)

**Bottom Edge Low/Area Scan (5x10x1):** Measurement grid: dx=12mm, dy=12mm

Maximum value of SAR (measured) = 0.348 W/kg

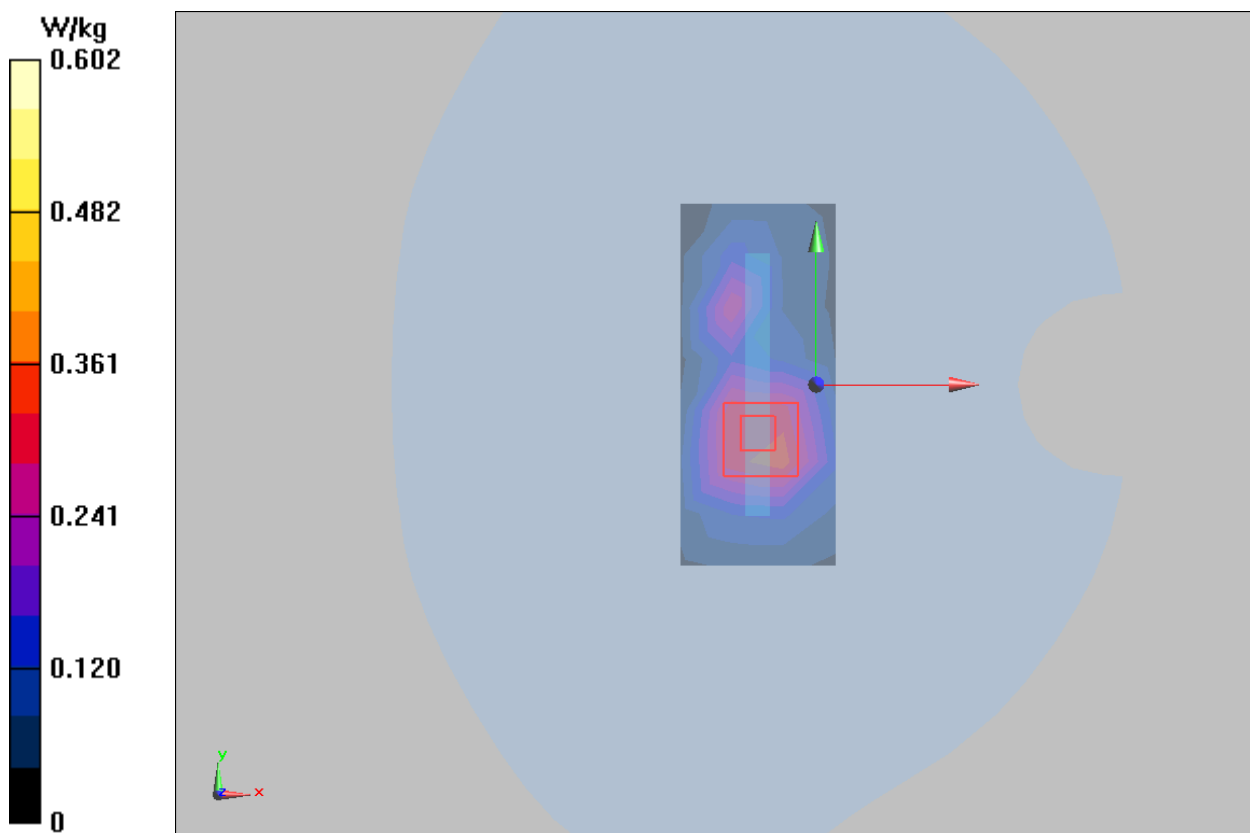
**Bottom Edge Low/Zoom Scan (7x7x7)/Cube 0:** Measurement grid: dx=5mm, dy=5mm, dz=5mm

Reference Value = 11.10 V/m; Power Drift = -0.14 dB

Peak SAR (extrapolated) = 1.08 W/kg

**SAR(1 g) = 0.510 W/kg; SAR(10 g) = 0.226 W/kg**

Maximum value of SAR (measured) = 0.602 W/kg



## Plot 47 LTE Band 41 1RB Right Cheek Middle

Date: 5/16/2020

Communication System: UID 0, LTE (0); Frequency: 2615 MHz; Duty Cycle: 1:1.58

Medium parameters used:  $f = 2615$  MHz;  $\sigma = 1.993$  S/m;  $\epsilon_r = 37.973$ ;  $\rho = 1000$  kg/m<sup>3</sup>

Ambient Temperature: 22.3 °C Liquid Temperature: 21.5 °C

Phantom section: Right Section

DASY5 Configuration:

Probe: EX3DV4 - SN3677; ConvF(7.20, 7.20, 7.20); Calibrated: 6/19/2019;

Electronics: DAE4 SN1317; Calibrated: 10/23/2019

Phantom: SAM1; Type: SAM; Serial: TP-1534

Measurement SW: DASY52, Version 52.10 (1); SEMCAD X Version 14.6.11 (7439)

**Right Cheek Middle/Area Scan (10x17x1):** Measurement grid: dx=12mm, dy=12mm

Maximum value of SAR (measured) = 0.110 W/kg

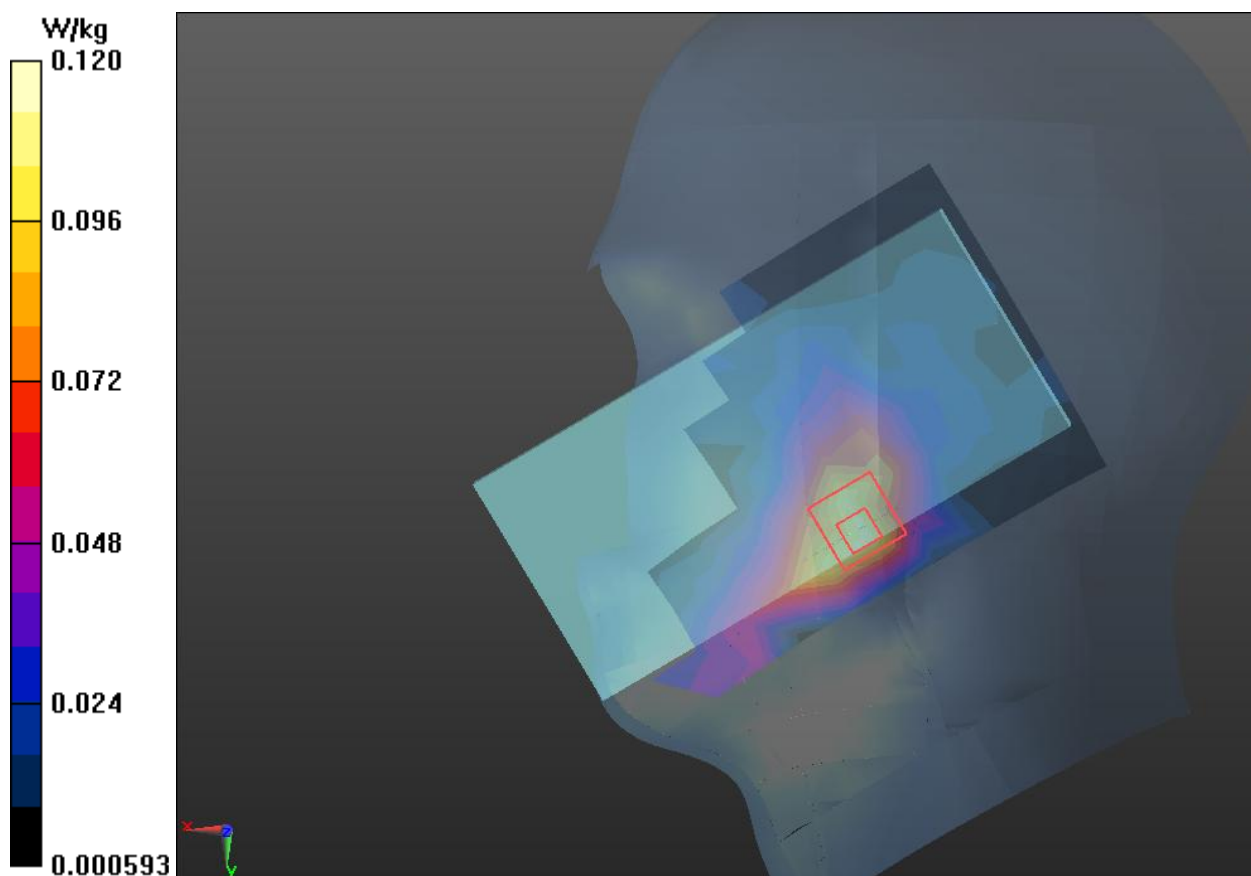
**Right Cheek Middle/Zoom Scan (7x7x7)/Cube 0:** Measurement grid: dx=5mm, dy=5mm, dz=5mm

Reference Value = 2.072 V/m; Power Drift = 0.053 dB

Peak SAR (extrapolated) = 0.207 W/kg

**SAR(1 g) = 0.111 W/kg; SAR(10 g) = 0.058 W/kg**

Maximum value of SAR (measured) = 0.120 W/kg



## Plot 48 LTE Band 41 1RB Back Side Middle (Distance 15mm)

Date: 5/16/2020

Communication System: UID 0, LTE (0); Frequency: 2615 MHz; Duty Cycle: 1:1.58

Medium parameters used:  $f = 2615$  MHz;  $\sigma = 1.993$  S/m;  $\epsilon_r = 37.973$ ;  $\rho = 1000$  kg/m<sup>3</sup>

Ambient Temperature: 22.3 °C Liquid Temperature: 21.5 °C

Phantom section: Flat Section

DASY5 Configuration:

Probe: EX3DV4 - SN3677; ConvF(7.20, 7.20, 7.20); Calibrated: 6/19/2019;

Electronics: DAE4 SN1317; Calibrated: 10/23/2019

Phantom: SAM1; Type: SAM; Serial: TP-1534

Measurement SW: DASY52, Version 52.10 (1); SEMCAD X Version 14.6.11 (7439)

**Back Side Middle/Area Scan (10x18x1):** Measurement grid: dx=12mm, dy=12mm

Maximum value of SAR (measured) = 0.282 W/kg

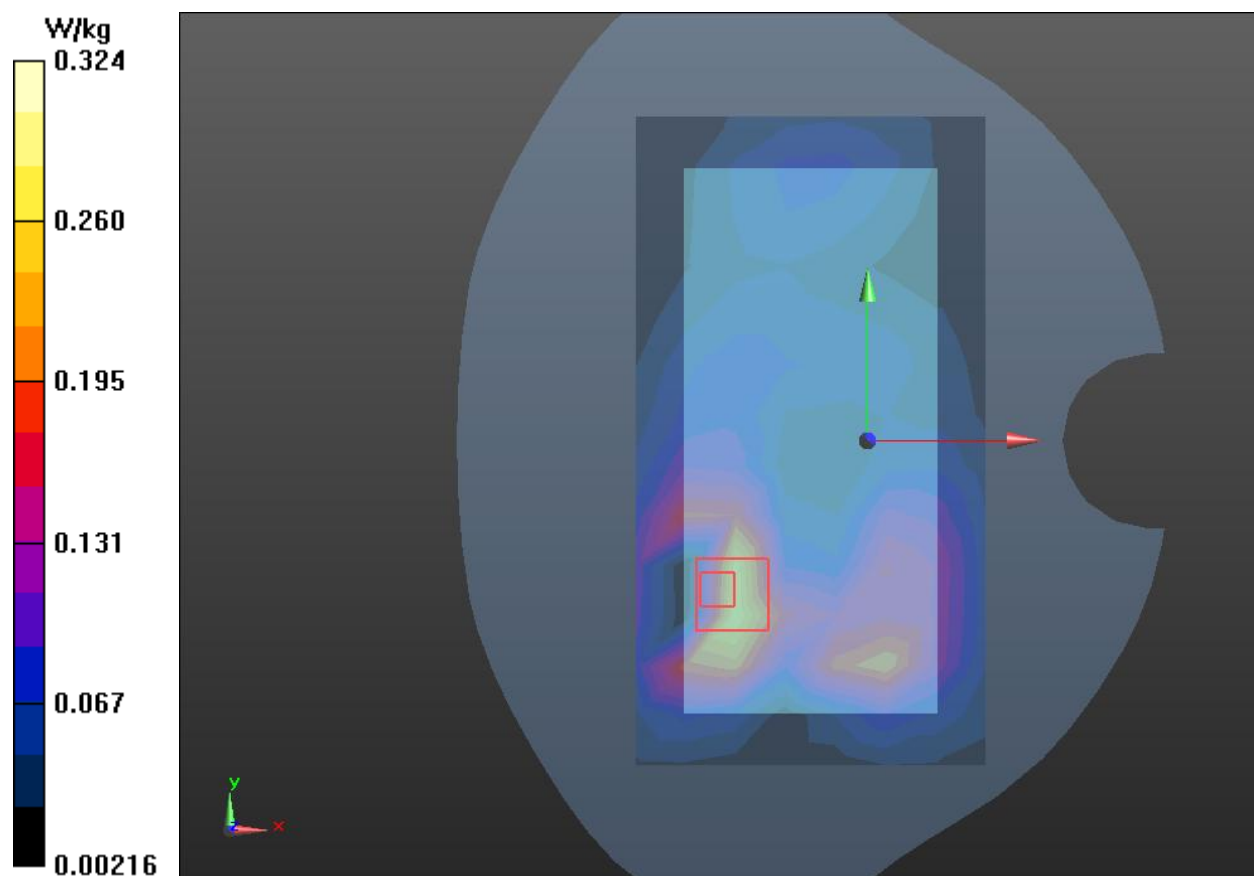
**Back Side Middle/Zoom Scan (7x7x7)/Cube 0:** Measurement grid: dx=5mm, dy=5mm, dz=5mm

Reference Value = 3.667 V/m; Power Drift = 0.024 dB

Peak SAR (extrapolated) = 0.616 W/kg

**SAR(1 g) = 0.305 W/kg; SAR(10 g) = 0.151 W/kg**

Maximum value of SAR (measured) = 0.324 W/kg



# Plot 49 LTE Band 41 50%RB Left Edge High (Distance 10mm)

Date: 5/16/2020

Communication System: UID 0, LTE (0); Frequency: 2645 MHz; Duty Cycle: 1:1.58

Medium parameters used:  $f = 2645$  MHz;  $\sigma = 2.028$  S/m;  $\epsilon_r = 37.868$ ;  $\rho = 1000$  kg/m<sup>3</sup>

Ambient Temperature: 22.3 °C Liquid Temperature: 21.5 °C

Phantom section: Flat Section

DASY5 Configuration:

Probe: EX3DV4 - SN3677; ConvF(7.20, 7.20, 7.20); Calibrated: 6/19/2019;

Electronics: DAE4 SN1317; Calibrated: 10/23/2019

Phantom: SAM1; Type: SAM; Serial: TP-1534

Measurement SW: DASY52, Version 52.10 (1); SEMCAD X Version 14.6.11 (7439)

**Left Edge High/Area Scan (5x18x1):** Measurement grid: dx=12mm, dy=12mm

Maximum value of SAR (measured) = 0.132 W/kg

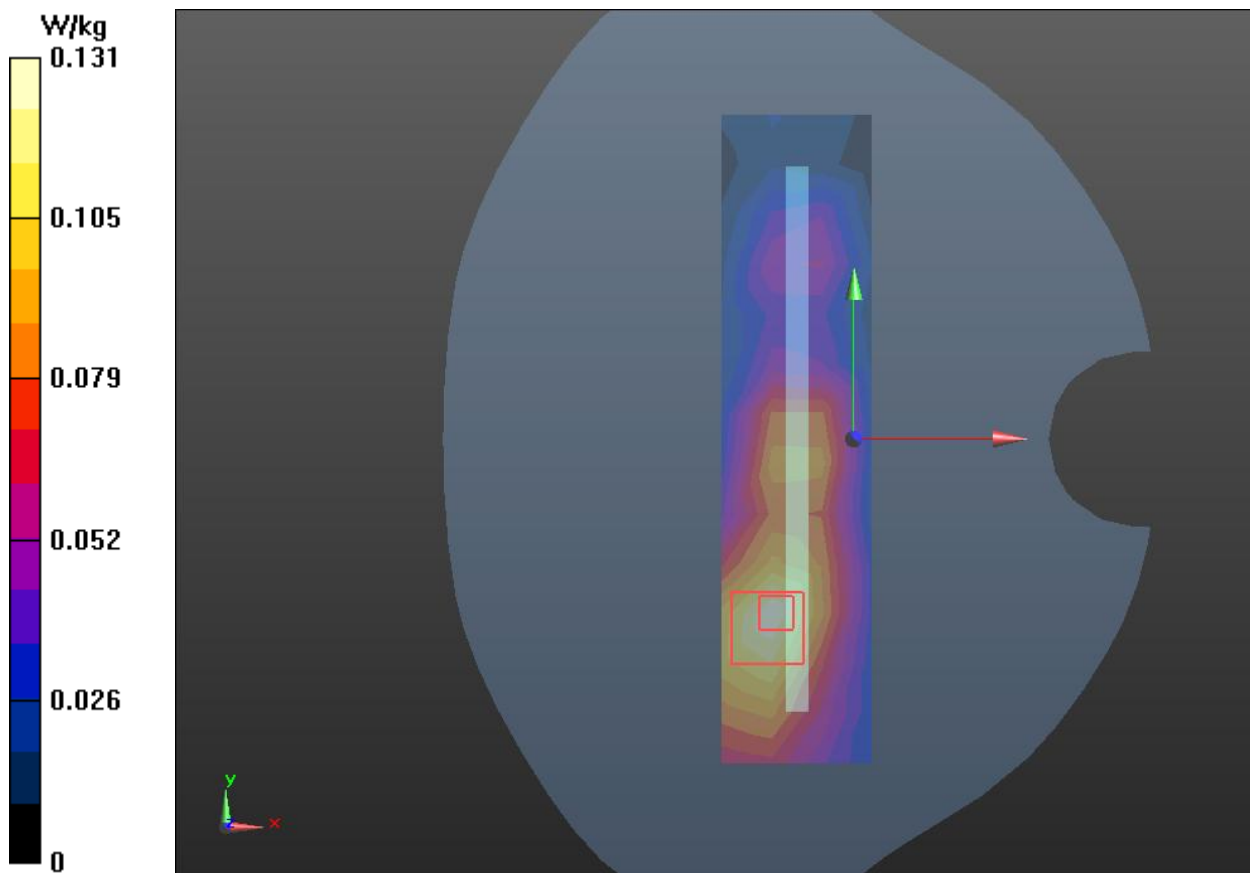
**Left Edge High/Zoom Scan (7x7x7)/Cube 0:** Measurement grid: dx=5mm, dy=5mm, dz=5mm

Reference Value = 7.470 V/m; Power Drift = 0.023 dB

Peak SAR (extrapolated) = 0.379 W/kg

**SAR(1 g) = 0.133 W/kg; SAR(10 g) = 0.066 W/kg**

Maximum value of SAR (measured) = 0.131 W/kg





## Wi-Fi-Antenna

### Plot 50 802.11b Left Cheek Low

Date: 5/17/2020

Communication System: UID 0, 802.11b (0); Frequency: 2437 MHz; Duty Cycle: 1:1

Medium parameters used:  $f = 2437$  MHz;  $\sigma = 1.797$  S/m;  $\epsilon_r = 38.629$ ;  $\rho = 1000$  kg/m<sup>3</sup>

Ambient Temperature: 22.3 °C Liquid Temperature: 21.5 °C

Phantom section: Left Section

DASY5 Configuration:

Sensor-Surface: 1.4mm (Mechanical Surface Detection)

Probe: EX3DV4 - SN3677; ConvF(7.50, 7.50, 7.50); Calibrated: 6/19/2019;

Electronics: DAE4 SN1317; Calibrated: 10/23/2019

Phantom: SAM1; Type: SAM; Serial: TP-1534

Measurement SW: DASY52, Version 52.10 (1); SEMCAD X Version 14.6.11 (7439)

**Left Cheek Low/Area Scan (10x17x1):** Measurement grid: dx=12mm, dy=12mm

Maximum value of SAR (measured) = 0.605 W/kg

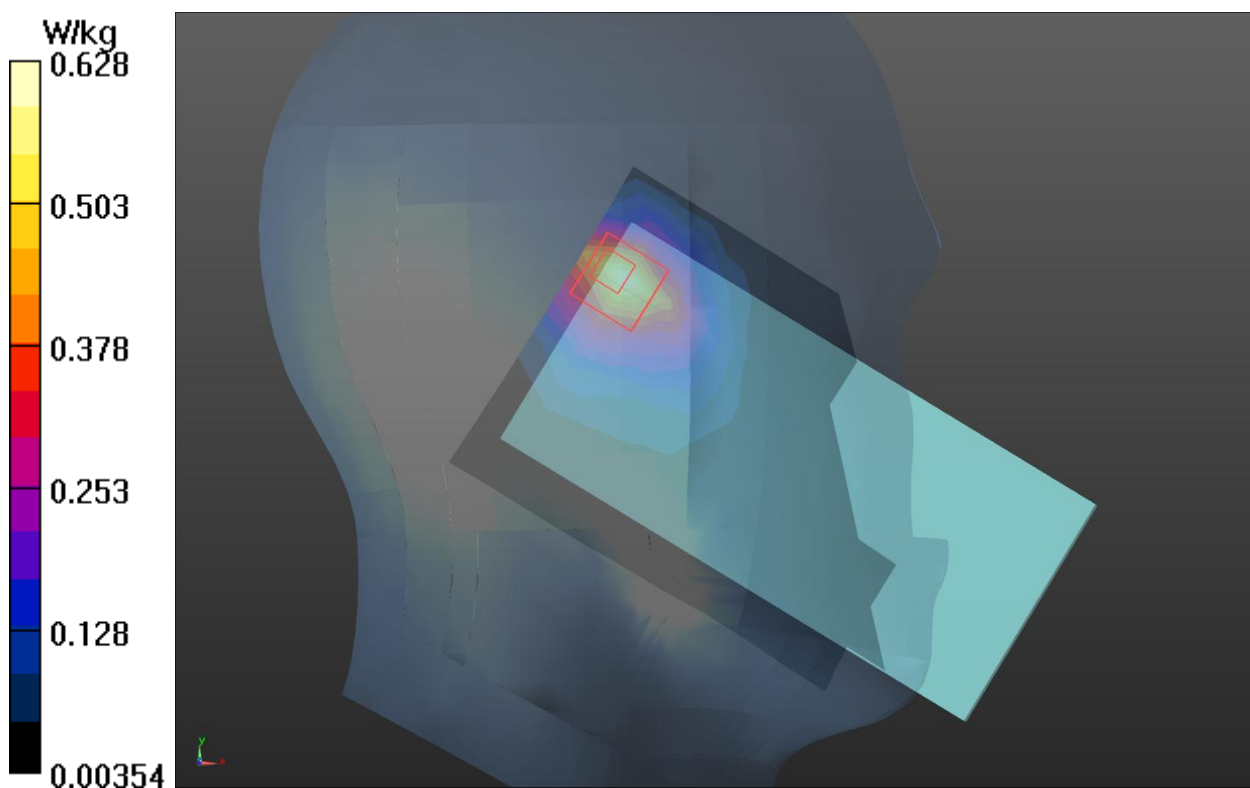
**Left Cheek Low/Zoom Scan (7x7x7)/Cube 0:** Measurement grid: dx=5mm, dy=5mm, dz=5mm

Reference Value = 10.77 V/m; Power Drift = 0.04 dB

Peak SAR (extrapolated) = 1.43 W/kg

**SAR(1 g) = 0.603 W/kg; SAR(10 g) = 0.285 W/kg**

Maximum value of SAR (measured) = 0.628 W/kg



## Plot 51 802.11b Back Side Middle (Distance 15mm)

Date: 5/17/2020

Communication System: UID 0, 802.11b ; Frequency: 2437 MHz; Duty Cycle: 1:1

Medium parameters used (interpolated):  $f = 2437$  MHz;  $\sigma = 1.848$  S/m;  $\epsilon_r = 39.546$ ;  $\rho = 1000$  kg/m<sup>3</sup>

Ambient Temperature: 22.3 °C Liquid Temperature: 21.5 °C

Phantom section: Flat Section

DASY5 Configuration:

Sensor-Surface: 1.4mm (Mechanical Surface Detection)

Probe: EX3DV4 - SN3677; ConvF(7.50, 7.50, 7.50); Calibrated: 6/19/2019;

Electronics: DAE4 SN1317; Calibrated: 10/23/2019

Phantom: SAM1; Type: SAM; Serial: TP-1534

Measurement SW: DASY52, Version 52.10 (1); SEMCAD X Version 14.6.11 (7439)

**Back Side Middle/Area Scan (10x17x1):** Measurement grid: dx=12mm, dy=12mm

Maximum value of SAR (measured) = 0.127 W/kg

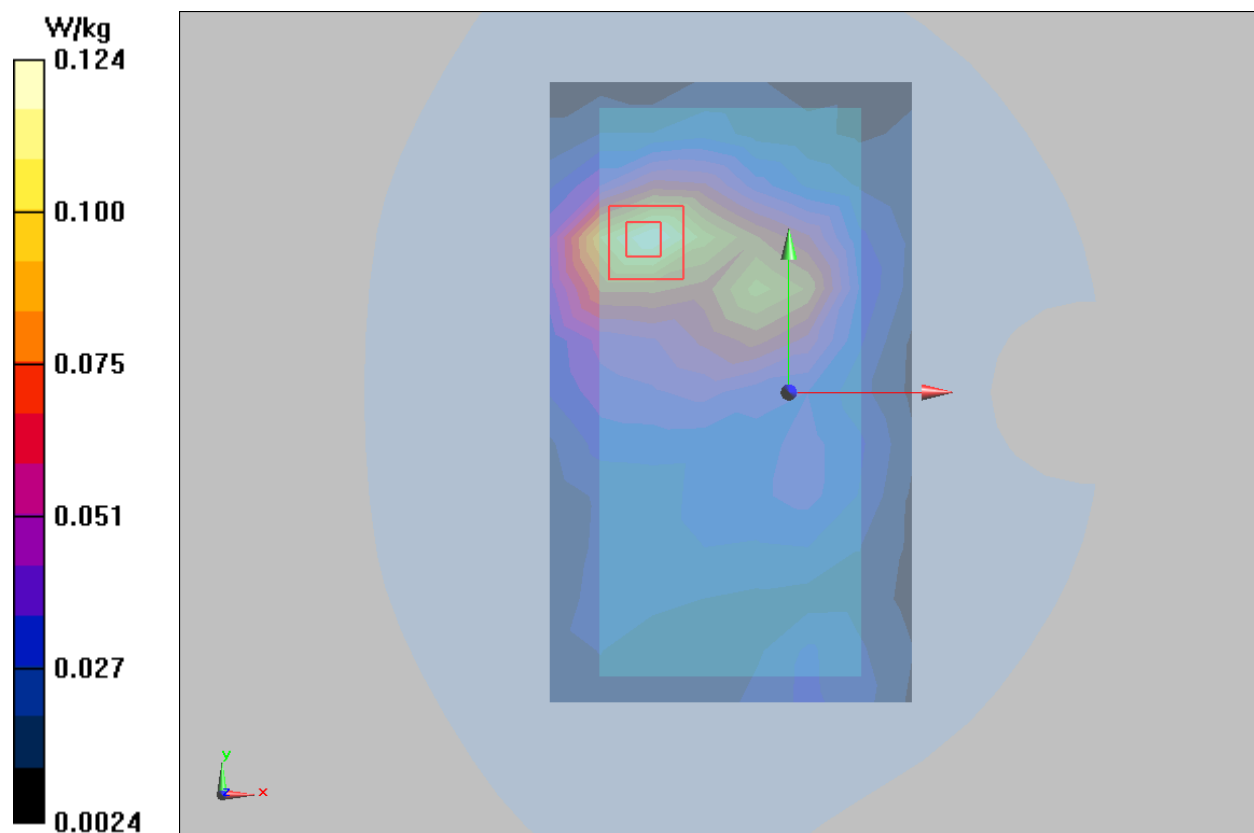
**Back Side Middle/Zoom Scan (7x7x7)/Cube 0:** Measurement grid: dx=5mm, dy=5mm, dz=5mm

Reference Value = 4.888 V/m; Power Drift = -0.12 dB

Peak SAR (extrapolated) = 0.238 W/kg

**SAR(1 g) = 0.115 W/kg; SAR(10 g) = 0.063 W/kg**

Maximum value of SAR (measured) = 0.124 W/kg



## Plot 52 802.11b Top Edge Middle (Distance 10mm)

Date: 5/17/2020

Communication System: UID 0, 802.11b ; Frequency: 2437 MHz;Duty Cycle: 1:1

Medium parameters used (interpolated):  $f = 2437$  MHz;  $\sigma = 1.848$  S/m;  $\epsilon_r = 39.546$ ;  $\rho = 1000$  kg/m<sup>3</sup>

Ambient Temperature:22.3 °C Liquid Temperature: 21.5°C

Phantom section: Flat Section

DASY5 Configuration:

Sensor-Surface: 1.4mm (Mechanical Surface Detection)

Probe: EX3DV4 - SN3677; ConvF(7.50, 7.50, 7.50); Calibrated: 6/19/2019;

Electronics: DAE4 SN1317; Calibrated: 10/23/2019

Phantom: SAM1; Type: SAM; Serial: TP-1534

Measurement SW: DASY52, Version 52.10 (1); SEMCAD X Version 14.6.11 (7439)

**Top Edge Middle/Area Scan (5x10x1):** Measurement grid: dx=12mm, dy=12mm

Maximum value of SAR (measured) = 0.217 W/kg

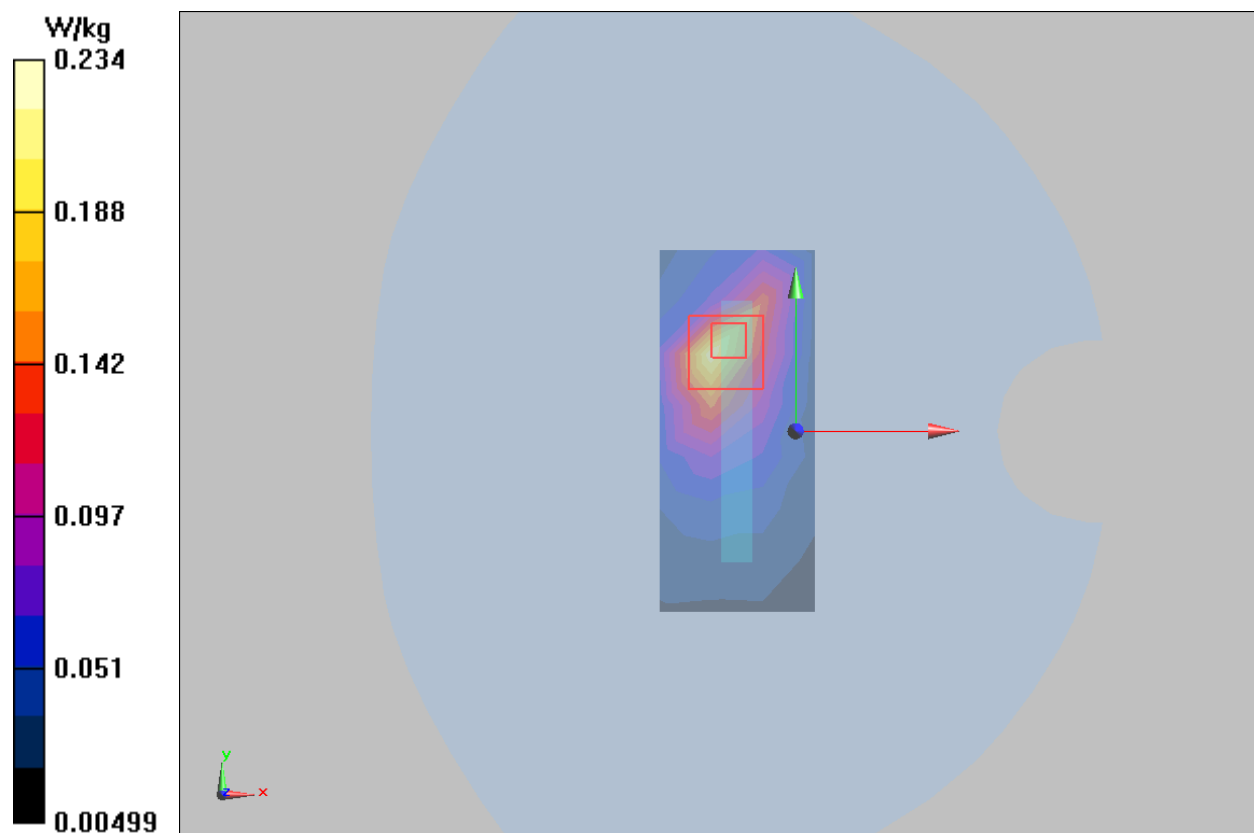
**Top Edge Middle/Zoom Scan (7x7x7)/Cube 0:** Measurement grid: dx=5mm, dy=5mm, dz=5mm

Reference Value = 7.565 V/m; Power Drift = 0.022 dB

Peak SAR (extrapolated) = 0.497 W/kg

**SAR(1 g) = 0.223 W/kg; SAR(10 g) = 0.105 W/kg**

Maximum value of SAR (measured) = 0.234 W/kg





## ANNEX D: Probe Calibration Certificate



In Collaboration with  
**s p e a g**  
CALIBRATION LABORATORY



中国认可  
国际互认  
校准  
CALIBRATION  
CNAS L0570

Add: No.51 Xueyuan Road, Haidian District, Beijing, 100191, China  
Tel: +86-10-62304633-2512 Fax: +86-10-62304633-2504  
E-mail: cttl@chinattl.com Http://www.chinattl.cn

Client

TA(Shanghai)

Certificate No: Z19-60169

## CALIBRATION CERTIFICATE

Object

EX3DV4 - SN:3677

Calibration Procedure(s)

FF-Z11-004-01

Calibration Procedures for Dosimetric E-field Probes

Calibration date:

June 19, 2019

This calibration Certificate documents the traceability to national standards, which realize the physical units of measurements(SI). The measurements and the uncertainties with confidence probability are given on the following pages and are part of the certificate.

All calibrations have been conducted in the closed laboratory facility: environment temperature(22±3)℃ and humidity<70%.

Calibration Equipment used (M&amp;TE critical for calibration)

Primary Standards	ID #	Cal Date(Calibrated by, Certificate No.)	Scheduled Calibration
Power Meter NRP2	101919	20-Jun-18 (CTTL, No.J18X05032)	Jun-19
Power sensor NRP-Z91	101547	20-Jun-18 (CTTL, No.J18X05032)	Jun-19
Power sensor NRP-Z91	101548	20-Jun-18 (CTTL, No.J18X05032)	Jun-19
Reference10dBAttenuator	18N50W-10dB	09-Feb-18(CTTL, No.J18X01133)	Feb-20
Reference20dBAttenuator	18N50W-20dB	09-Feb-18(CTTL, No.J18X01132)	Feb-20
Reference Probe EX3DV4	SN 3617	31-Jan-19(SPEAG,No.EX3-3617_Jan19)	Jan-20
DAE4	SN 1331	06-Feb-19(SPEAG, No.DAE4-1331_Feb19)	Feb -20
Secondary Standards	ID #	Cal Date(Calibrated by, Certificate No.)	Scheduled Calibration
SignalGeneratorMG3700A	6201052605	21-Jun-18 (CTTL, No.J18X05033)	Jun-19
Network Analyzer E5071C	MY46110673	24-Jan-19 (CTTL, No.J19X00547)	Jan -20

Calibrated by:

Name: Yu Zongying  
Function: SAR Test Engineer

Reviewed by:

Name: Lin Hao  
Function: SAR Test Engineer

Approved by:

Name: Qi Dianyuan  
Function: SAR Project Leader

Issued: June 20, 2019

This calibration certificate shall not be reproduced except in full without written approval of the laboratory.

Certificate No: Z19-60169

Page 1 of 11





Add: No.51 Xueyuan Road, Haidian District, Beijing, 100191, China  
Tel: +86-10-62304633-2512 Fax: +86-10-62304633-2504  
E-mail: cttl@chinattl.com <http://www.chinattl.cn>

# Glossary:

TSL	tissue simulating liquid
NORM <sub>x,y,z</sub>	sensitivity in free space
ConvF	sensitivity in TSL / NORM <sub>x,y,z</sub>
DCP	diode compression point
CF	crest factor (1/duty_cycle) of the RF signal
A,B,C,D	modulation dependent linearization parameters
Polarization $\Phi$	$\Phi$ rotation around probe axis
Polarization $\theta$	$\theta$ rotation around an axis that is in the plane normal to probe axis (at measurement center), $\theta=0$ is normal to probe axis

Connector Angle information used in DASY system to align probe sensor X to the robot coordinate system

## Calibration is Performed According to the Following Standards:

- IEEE Std 1528-2013, "IEEE Recommended Practice for Determining the Peak Spatial-Averaged Specific Absorption Rate (SAR) in the Human Head from Wireless Communications Devices: Measurement Techniques", June 2013
- IEC 62209-1, "Measurement procedure for the assessment of Specific Absorption Rate (SAR) from hand-held and body-mounted devices used next to the ear (frequency range of 300 MHz to 6 GHz)", July 2016
- IEC 62209-2, "Procedure to determine the Specific Absorption Rate (SAR) for wireless communication devices used in close proximity to the human body (frequency range of 30 MHz to 6 GHz)", March 2010
- KDB 865664, "SAR Measurement Requirements for 100 MHz to 6 GHz"

## Methods Applied and Interpretation of Parameters:

- NORM<sub>x,y,z</sub>: Assessed for E-field polarization  $\theta=0$  ( $f \leq 900\text{MHz}$  in TEM-cell;  $f > 1800\text{MHz}$ : waveguide). NORM<sub>x,y,z</sub> are only intermediate values, i.e., the uncertainties of NORM<sub>x,y,z</sub> does not effect the  $E^2$ -field uncertainty inside TSL (see below ConvF).
- NORM( $f$ )<sub>x,y,z</sub> = NORM<sub>x,y,z</sub> \* frequency\_response (see Frequency Response Chart). This linearization is implemented in DASY4 software versions later than 4.2. The uncertainty of the frequency response is included in the stated uncertainty of ConvF.
- DCP<sub>x,y,z</sub>: DCP are numerical linearization parameters assessed based on the data of power sweep (no uncertainty required). DCP does not depend on frequency nor media.
- PAR: PAR is the Peak to Average Ratio that is not calibrated but determined based on the signal characteristics.
- A<sub>x,y,z</sub>; B<sub>x,y,z</sub>; C<sub>x,y,z</sub>; VR<sub>x,y,z</sub>; A,B,C are numerical linearization parameters assessed based on the data of power sweep for specific modulation signal. The parameters do not depend on frequency nor media. VR is the maximum calibration range expressed in RMS voltage across the diode.
- ConvF and Boundary Effect Parameters: Assessed in flat phantom using E-field (or Temperature Transfer Standard for  $f \leq 800\text{MHz}$ ) and inside waveguide using analytical field distributions based on power measurements for  $f > 800\text{MHz}$ . The same setups are used for assessment of the parameters applied for boundary compensation (alpha, depth) of which typical uncertainty valued are given. These parameters are used in DASY4 software to improve probe accuracy close to the boundary. The sensitivity in TSL corresponds to NORM<sub>x,y,z</sub> \* ConvF whereby the uncertainty corresponds to that given for ConvF. A frequency dependent ConvF is used in DASY version 4.4 and higher which allows extending the validity from  $\pm 50\text{MHz}$  to  $\pm 100\text{MHz}$ .
- Spherical isotropy (3D deviation from isotropy): in a field of low gradients realized using a flat phantom exposed by a patch antenna.
- Sensor Offset: The sensor offset corresponds to the offset of virtual measurement center from the probe tip (on probe axis). No tolerance required.
- Connector Angle: The angle is assessed using the information gained by determining the NORM<sub>x</sub> (no uncertainty required).



Add: No.51 Xueyuan Road, Haidian District, Beijing, 100191, China  
Tel: +86-10-62304633-2512 Fax: +86-10-62304633-2504  
E-mail: cttl@chinattl.com [Http://www.chinattl.cn](http://www.chinattl.cn)

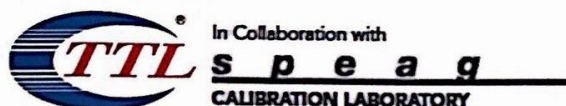
# Probe EX3DV4

## SN: 3677

Calibrated: June 19, 2019

Calibrated for DASY/EASY Systems

(Note: non-compatible with DASY2 system!)



Add: No.51 Xueyuan Road, Haidian District, Beijing, 100191, China  
Tel: +86-10-62304633-2512 Fax: +86-10-62304633-2504  
E-mail: cttl@chinattl.com [Http://www.chinattl.cn](http://www.chinattl.cn)

## DASY/EASY – Parameters of Probe: EX3DV4 – SN: 3677

### Basic Calibration Parameters

	Sensor X	Sensor Y	Sensor Z	Unc (k=2)
Norm( $\mu\text{V}/(\text{V}/\text{m})^2$ ) <sup>A</sup>	0.41	0.46	0.40	±10.0%
DCP(mV) <sup>B</sup>	101.1	102.9	101.9	

### Modulation Calibration Parameters

UID	Communication System Name		A dB	B dB $\sqrt{\mu\text{V}}$	C	D dB	VR mV	Unc <sup>E</sup> (k=2)
0	CW	X	0.0	0.0	1.0	0.00	152.0	±2.6%
		Y	0.0	0.0	1.0		170.1	
		Z	0.0	0.0	1.0		147.7	

The reported uncertainty of measurement is stated as the standard uncertainty of Measurement multiplied by the coverage factor k=2, which for a normal distribution Corresponds to a coverage probability of approximately 95%.

<sup>A</sup> The uncertainties of Norm X, Y, Z do not affect the E<sup>2</sup>-field uncertainty inside TSL (see Page 5 and Page 6).

<sup>B</sup> Numerical linearization parameter: uncertainty not required.

<sup>E</sup> Uncertainty is determined using the max. deviation from linear response applying rectangular distribution and is expressed for the square of the field value.





Add: No.51 Xueyuan Road, Haidian District, Beijing, 100191, China  
Tel: +86-10-62304633-2512 Fax: +86-10-62304633-2504  
E-mail: cttl@chinattl.com [Http://www.chinattl.cn](http://www.chinattl.cn)

## DASY/EASY – Parameters of Probe: EX3DV4 – SN: 3677

### Calibration Parameter Determined in Head Tissue Simulating Media

f [MHz] <sup>C</sup>	Relative Permittivity <sup>F</sup>	Conductivity (S/m) <sup>F</sup>	ConvF X	ConvF Y	ConvF Z	Alpha <sup>G</sup>	Depth <sup>G</sup> (mm)	Unct. (k=2)
750	41.9	0.89	9.54	9.54	9.54	0.11	1.56	±12.1%
835	41.5	0.90	9.20	9.20	9.20	0.11	1.61	±12.1%
1750	40.1	1.37	8.21	8.21	8.21	0.22	1.11	±12.1%
1900	40.0	1.40	7.79	7.79	7.79	0.22	1.04	±12.1%
2300	39.5	1.67	7.66	7.66	7.66	0.57	0.72	±12.1%
2450	39.2	1.80	7.50	7.50	7.50	0.59	0.71	±12.1%
2600	39.0	1.96	7.20	7.20	7.20	0.65	0.68	±12.1%
5250	35.9	4.71	5.56	5.56	5.56	0.40	1.40	±13.3%
5600	35.5	5.07	4.90	4.90	4.90	0.45	1.40	±13.3%
5750	35.4	5.22	4.99	4.99	4.99	0.50	1.35	±13.3%

<sup>C</sup> Frequency validity above 300 MHz of ±100MHz only applies for DASY v4.4 and higher (Page 2), else it is restricted to ±50MHz. The uncertainty is the RSS of ConvF uncertainty at calibration frequency and the uncertainty for the indicated frequency band. Frequency validity below 300 MHz is ± 10, 25, 40, 50 and 70 MHz for ConvF assessments at 30, 64, 128, 150 and 220 MHz respectively. Above 5 GHz frequency validity can be extended to ± 110 MHz.

<sup>F</sup> At frequency below 3 GHz, the validity of tissue parameters ( $\epsilon$  and  $\sigma$ ) can be relaxed to ±10% if liquid compensation formula is applied to measured SAR values. At frequencies above 3 GHz, the validity of tissue parameters ( $\epsilon$  and  $\sigma$ ) is restricted to ±5%. The uncertainty is the RSS of the ConvF uncertainty for indicated target tissue parameters.

<sup>G</sup> Alpha/Depth are determined during calibration. SPEAG warrants that the remaining deviation due to the boundary effect after compensation is always less than ± 1% for frequencies below 3 GHz and below ± 2% for the frequencies between 3-6 GHz at any distance larger than half the probe tip diameter from the boundary.



Add: No.51 Xueyuan Road, Haidian District, Beijing, 100191, China  
Tel: +86-10-62304633-2512 Fax: +86-10-62304633-2504  
E-mail: cttl@chinattl.com [Http://www.chinattl.cn](http://www.chinattl.cn)

## DASY/EASY – Parameters of Probe: EX3DV4 – SN: 3677

### Calibration Parameter Determined in Body Tissue Simulating Media

f [MHz] <sup>C</sup>	Relative Permittivity <sup>F</sup>	Conductivity (S/m) <sup>F</sup>	ConvF X	ConvF Y	ConvF Z	Alpha <sup>G</sup>	Depth <sup>G</sup> (mm)	Unct. (k=2)
750	55.5	0.96	9.75	9.75	9.75	0.40	0.75	± 12.1%
835	55.2	0.97	9.40	9.40	9.40	0.18	1.38	± 12.1%
1750	53.4	1.49	7.86	7.86	7.86	0.23	1.09	± 12.1%
1900	53.3	1.52	7.62	7.62	7.62	0.22	1.15	± 12.1%
2300	52.9	1.81	7.67	7.67	7.67	0.55	0.81	± 12.1%
2450	52.7	1.95	7.57	7.57	7.57	0.59	0.75	± 12.1%
2600	52.5	2.16	7.33	7.33	7.33	0.74	0.65	± 12.1%
5250	48.9	5.36	4.93	4.93	4.93	0.45	1.55	± 13.3%
5600	48.5	5.77	4.24	4.24	4.24	0.50	1.45	± 13.3%
5750	48.3	5.94	4.35	4.35	4.35	0.50	1.50	± 13.3%

<sup>C</sup> Frequency validity above 300 MHz of ±100MHz only applies for DASY v4.4 and higher (Page 2), else it is restricted to ±50MHz. The uncertainty is the RSS of ConvF uncertainty at calibration frequency and the uncertainty for the indicated frequency band. Frequency validity below 300 MHz is ± 10, 25, 40, 50 and 70 MHz for ConvF assessments at 30, 64, 128, 150 and 220 MHz respectively. Above 5 GHz frequency validity can be extended to ± 110 MHz.

<sup>F</sup> At frequency below 3 GHz, the validity of tissue parameters ( $\epsilon$  and  $\sigma$ ) can be relaxed to ±10% if liquid compensation formula is applied to measured SAR values. At frequencies above 3 GHz, the validity of tissue parameters ( $\epsilon$  and  $\sigma$ ) is restricted to ±5%. The uncertainty is the RSS of the ConvF uncertainty for indicated target tissue parameters.

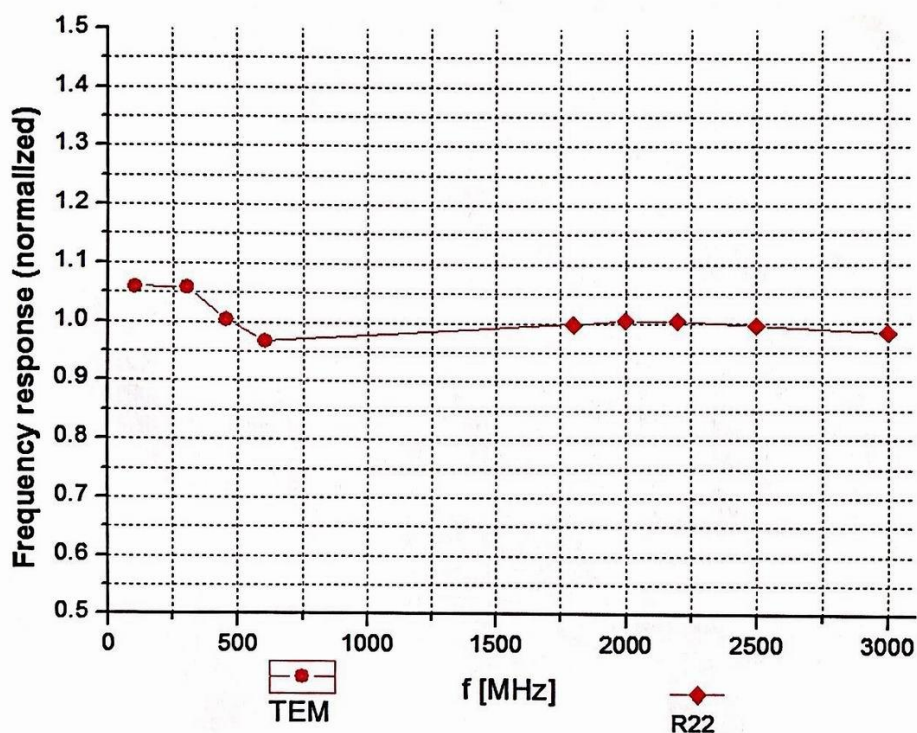
<sup>G</sup> Alpha/Depth are determined during calibration. SPEAG warrants that the remaining deviation due to the boundary effect after compensation is always less than ± 1% for frequencies below 3 GHz and below ± 2% for the frequencies between 3-6 GHz at any distance larger than half the probe tip diameter from the boundary.



In Collaboration with  
**s p e a g**  
CALIBRATION LABORATORY

Add: No.51 Xueyuan Road, Haidian District, Beijing, 100191, China  
Tel: +86-10-62304633-2512 Fax: +86-10-62304633-2504  
E-mail: cttl@chinattl.com [Http://www.chinattl.cn](http://www.chinattl.cn)

## Frequency Response of E-Field (TEM-Cell: ifi110 EXX, Waveguide: R22)



Uncertainty of Frequency Response of E-field:  $\pm 7.4\%$  ( $k=2$ )





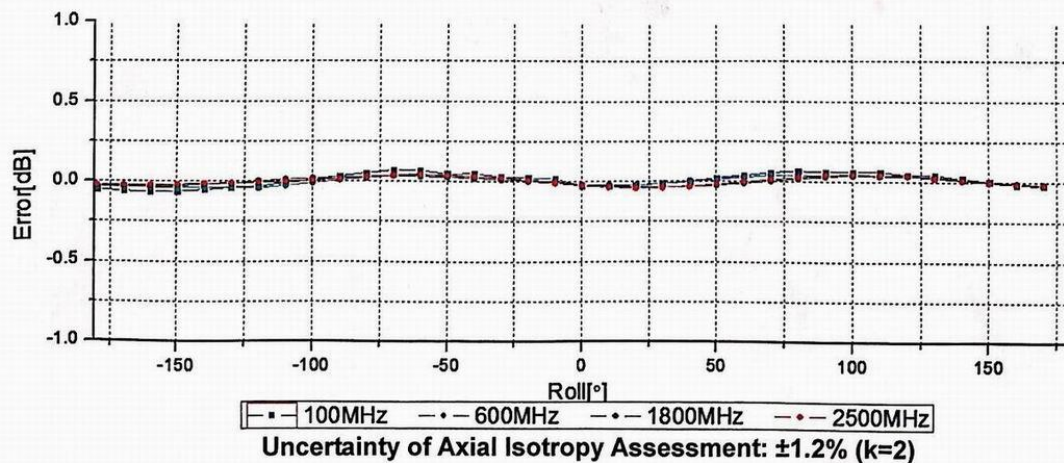
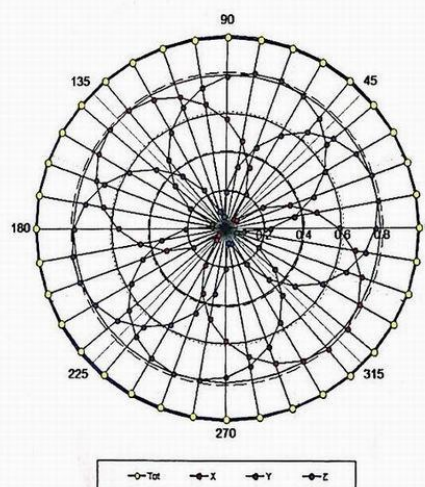
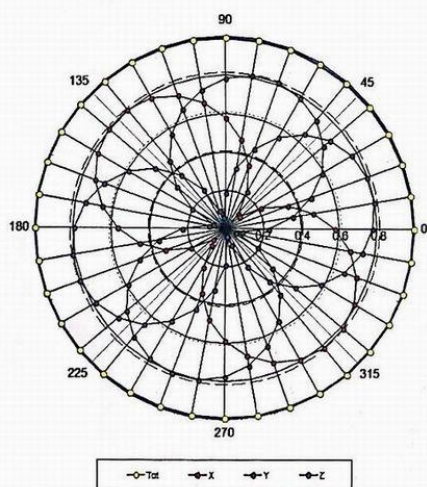
In Collaboration with  
**s p e a g**  
CALIBRATION LABORATORY

Add: No.51 Xueyuan Road, Haidian District, Beijing, 100191, China  
Tel: +86-10-62304633-2512 Fax: +86-10-62304633-2504  
E-mail: cttl@chinattl.com Http://www.chinattl.cn

## Receiving Pattern ( $\Phi$ ), $\theta=0^\circ$

**f=600 MHz, TEM**

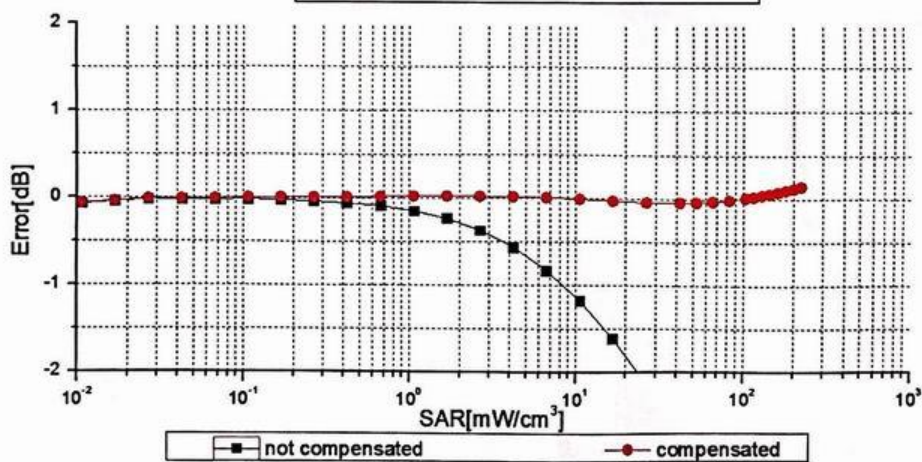
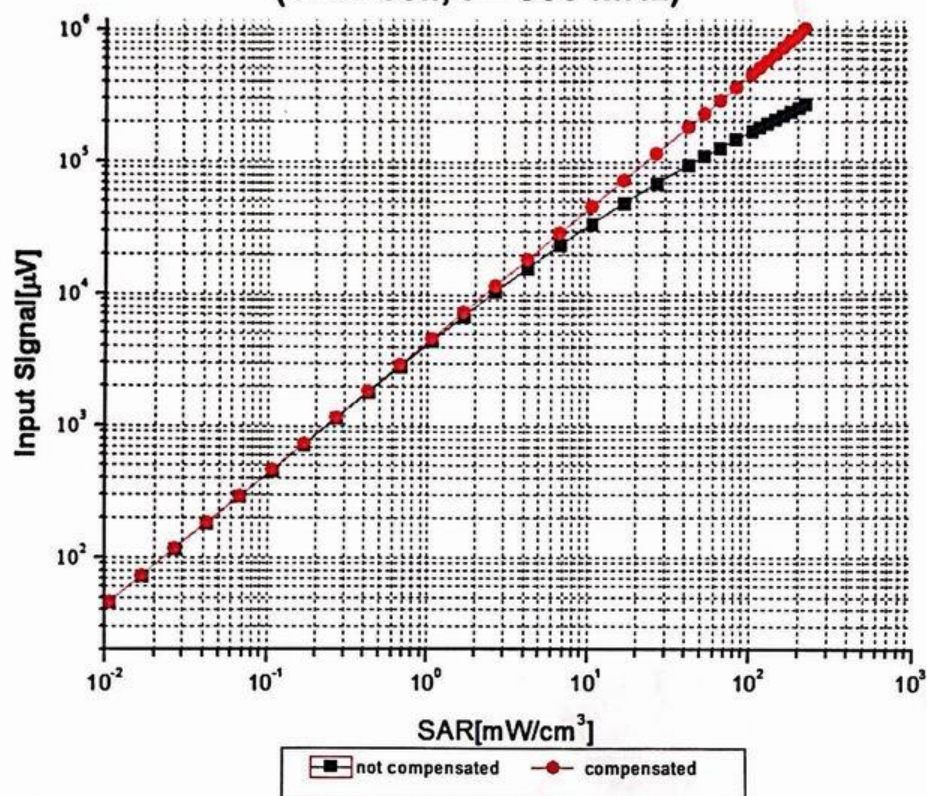
**f=1800 MHz, R22**





Add: No.51 Xueyuan Road, Haidian District, Beijing, 100191, China  
Tel: +86-10-62304633-2512 Fax: +86-10-62304633-2504  
E-mail: cttl@chinattl.com [Http://www.chinattl.cn](http://www.chinattl.cn)

## Dynamic Range f(SAR<sub>head</sub>) (TEM cell, f = 900 MHz)



Uncertainty of Linearity Assessment:  $\pm 0.9\%$  ( $k=2$ )

Certificate No: Z19-60169

Page 9 of 11



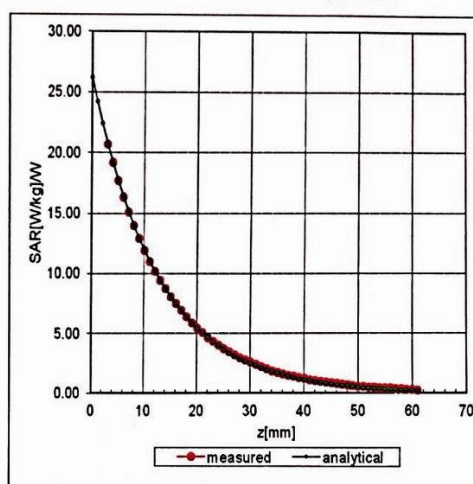
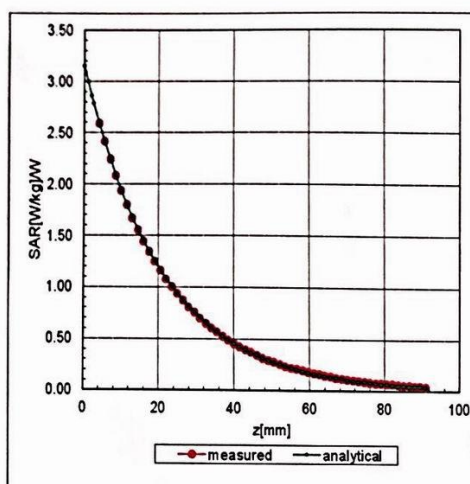


Add: No.51 Xueyuan Road, Haidian District, Beijing, 100191, China  
Tel: +86-10-62304633-2512 Fax: +86-10-62304633-2504  
E-mail: cttl@chinattl.com [Http://www.chinattl.cn](http://www.chinattl.cn)

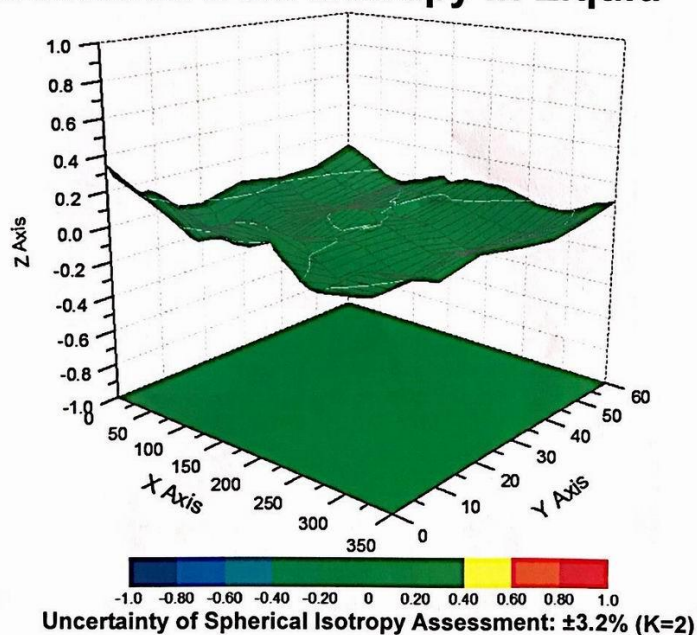
## Conversion Factor Assessment

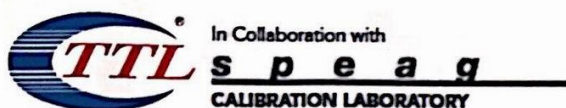
f=750 MHz, WGLS R9(H\_convF)

f=1750 MHz, WGLS R22(H\_convF)



## Deviation from Isotropy in Liquid





Add: No.51 Xueyuan Road, Haidian District, Beijing, 100191, China  
Tel: +86-10-62304633-2512 Fax: +86-10-62304633-2504  
E-mail: [ctl@chinattl.com](mailto:ctl@chinattl.com) [Http://www.chinattl.cn](http://www.chinattl.cn)

## DASY/EASY – Parameters of Probe: EX3DV4 – SN: 3677

### Other Probe Parameters

Sensor Arrangement	Triangular
Connector Angle (°)	117.9
Mechanical Surface Detection Mode	enabled
Optical Surface Detection Mode	disable
Probe Overall Length	337mm
Probe Body Diameter	10mm
Tip Length	9mm
Tip Diameter	2.5mm
Probe Tip to Sensor X Calibration Point	1mm
Probe Tip to Sensor Y Calibration Point	1mm
Probe Tip to Sensor Z Calibration Point	1mm
Recommended Measurement Distance from Surface	1.4mm





## ANNEX E: D835V2 Dipole Calibration Certificate



In Collaboration with  
**s p e a g**  
CALIBRATION LABORATORY



中国认可  
国际互认  
校准  
CALIBRATION  
CNAS L0570

Add: No.51 Xueyuan Road, Haidian District, Beijing, 100191, China  
Tel: +86-10-62304633-2079 Fax: +86-10-62304633-2504  
E-mail: cttl@chinattl.com http://www.chinattl.cn

Client

TA(Shanghai)

Certificate No: Z17-97114

## CALIBRATION CERTIFICATE

Object D835V2 - SN: 4d020

Calibration Procedure(s) FF-Z11-003-01  
Calibration Procedures for dipole validation kits

Calibration date: August 28, 2017

This calibration Certificate documents the traceability to national standards, which realize the physical units of measurements(SI). The measurements and the uncertainties with confidence probability are given on the following pages and are part of the certificate.

All calibrations have been conducted in the closed laboratory facility: environment temperature(22±3)°C and humidity<70%.

Calibration Equipment used (M&TE critical for calibration)

Primary Standards	ID #	Cal Date(Calibrated by, Certificate No.)	Scheduled Calibration
Power Meter NRVD	102083	22-Sep-16 (CTTL, No.J16X06809)	Sep-17
Power sensor NRV-Z5	100595	22-Sep-16 (CTTL, No.J16X06809)	Sep-17
Reference Probe EX3DV4	SN 3617	23-Jan-17(SPEAG,No.EX3-3617_Jan17)	Jan-18
DAE4	SN 1331	19-Jan-17(CTTL-SPEAG,No.Z17-97015)	Jan-18
Secondary Standards	ID #	Cal Date(Calibrated by, Certificate No.)	Scheduled Calibration
Signal Generator E4438C	MY49071430	13-Jan-17 (CTTL, No.J17X00286)	Jan-18
Network Analyzer E5071C	MY46110673	13-Jan-17 (CTTL, No.J17X00285)	Jan-18

	Name	Function	Signature
Calibrated by:	Zhao Jing	SAR Test Engineer	
Reviewed by:	Lin Hao	SAR Test Engineer	
Approved by:	Qi Dianyuan	SAR Project Leader	

Issued: August 31, 2017

This calibration certificate shall not be reproduced except in full without written approval of the laboratory.

Certificate No: Z17-97114

Page 1 of 8



In Collaboration with  
**s p e a g**  
CALIBRATION LABORATORY

Add: No.51 Xueyuan Road, Haidian District, Beijing, 100191, China  
Tel: +86-10-62304633-2079 Fax: +86-10-62304633-2504  
E-mail: cttl@chinattl.com http://www.chinattl.cn

# Glossary:

TSL	tissue simulating liquid
ConvF	sensitivity in TSL / NORM <sub>x,y,z</sub>
N/A	not applicable or not measured

# Calibration is Performed According to the Following Standards:

- IEEE Std 1528-2013, "IEEE Recommended Practice for Determining the Peak Spatial-Averaged Specific Absorption Rate (SAR) in the Human Head from Wireless Communications Devices: Measurement Techniques", June 2013
- IEC 62209-1, "Measurement procedure for assessment of specific absorption rate of human exposure to radio frequency fields from hand-held and body-mounted wireless communication devices- Part 1: Device used next to the ear (Frequency range of 300MHz to 6GHz)", July 2016
- IEC 62209-2, "Procedure to measure the Specific Absorption Rate (SAR) For wireless communication devices used in close proximity to the human body (frequency range of 30MHz to 6GHz)", March 2010
- KDB865664, SAR Measurement Requirements for 100 MHz to 6 GHz

# Additional Documentation:

- DASY4/5 System Handbook

# Methods Applied and Interpretation of Parameters:

- Measurement Conditions:** Further details are available from the Validation Report at the end of the certificate. All figures stated in the certificate are valid at the frequency indicated.
- Antenna Parameters with TSL:** The dipole is mounted with the spacer to position its feed point exactly below the center marking of the flat phantom section, with the arms oriented parallel to the body axis.
- Feed Point Impedance and Return Loss:** These parameters are measured with the dipole positioned under the liquid filled phantom. The impedance stated is transformed from the measurement at the SMA connector to the feed point. The Return Loss ensures low reflected power. No uncertainty required.
- Electrical Delay:** One-way delay between the SMA connector and the antenna feed point. No uncertainty required.
- SAR measured:** SAR measured at the stated antenna input power.
- SAR normalized:** SAR as measured, normalized to an input power of 1 W at the antenna connector.
- SAR for nominal TSL parameters:** The measured TSL parameters are used to calculate the nominal SAR result.

The reported uncertainty of measurement is stated as the standard uncertainty of Measurement multiplied by the coverage factor  $k=2$ , which for a normal distribution Corresponds to a coverage probability of approximately 95%.



In Collaboration with  
**s p e a g**  
CALIBRATION LABORATORY

Add: No.51 Xueyuan Road, Haidian District, Beijing, 100191, China  
Tel: +86-10-62304633-2079 Fax: +86-10-62304633-2504  
E-mail: cttl@chinattl.com http://www.chinattl.cn

### Measurement Conditions

DASY system configuration, as far as not given on page 1.

DASY Version	DASY52	52.10.0.1446
Extrapolation	Advanced Extrapolation	
Phantom	Triple Flat Phantom 5.1C	
Distance Dipole Center - TSL	15 mm	with Spacer
Zoom Scan Resolution	dx, dy, dz = 5 mm	
Frequency	835 MHz $\pm$ 1 MHz	

### Head TSL parameters

The following parameters and calculations were applied.

	Temperature	Permittivity	Conductivity
Nominal Head TSL parameters	22.0 °C	41.5	0.90 mho/m
Measured Head TSL parameters	(22.0 $\pm$ 0.2) °C	41.2 $\pm$ 6 %	0.89 mho/m $\pm$ 6 %
Head TSL temperature change during test	<1.0 °C	----	----

### SAR result with Head TSL

SAR averaged over 1 cm <sup>3</sup> (1 g) of Head TSL	Condition	
SAR measured	250 mW input power	2.34 mW / g
SAR for nominal Head TSL parameters	normalized to 1W	9.45 mW / g $\pm$ 18.8 % (k=2)
SAR averaged over 10 cm <sup>3</sup> (10 g) of Head TSL	Condition	
SAR measured	250 mW input power	1.51 mW / g
SAR for nominal Head TSL parameters	normalized to 1W	6.09 mW / g $\pm$ 18.7 % (k=2)

### Body TSL parameters

The following parameters and calculations were applied.

	Temperature	Permittivity	Conductivity
Nominal Body TSL parameters	22.0 °C	55.2	0.97 mho/m
Measured Body TSL parameters	(22.0 $\pm$ 0.2) °C	55.6 $\pm$ 6 %	0.98 mho/m $\pm$ 6 %
Body TSL temperature change during test	<1.0 °C	----	----

### SAR result with Body TSL

SAR averaged over 1 cm <sup>3</sup> (1 g) of Body TSL	Condition	
SAR measured	250 mW input power	2.46 mW / g
SAR for nominal Body TSL parameters	normalized to 1W	9.75 mW / g $\pm$ 18.8 % (k=2)
SAR averaged over 10 cm <sup>3</sup> (10 g) of Body TSL	Condition	
SAR measured	250 mW input power	1.63 mW / g
SAR for nominal Body TSL parameters	normalized to 1W	6.47 mW / g $\pm$ 18.7 % (k=2)

Certificate No: Z17-97114

Page 3 of 8