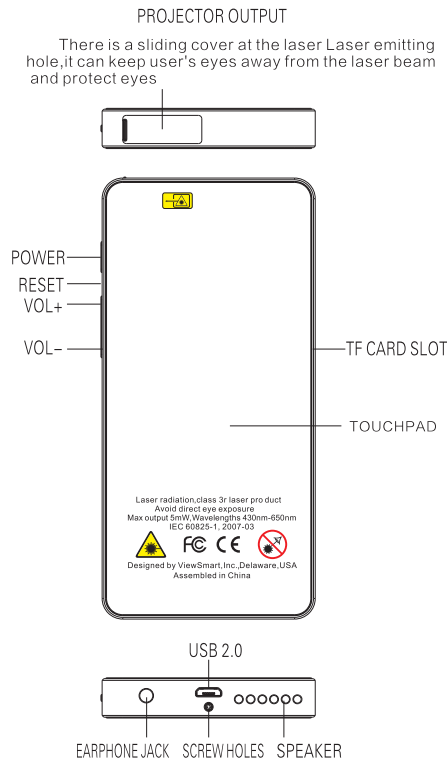
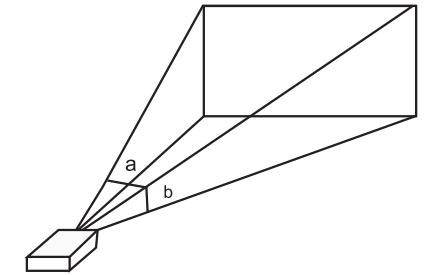


Equipment parts drawing



Projection Angles



Horizontal angle a = 42.5° Vertical angle b = 25.0°

Disclaimer

User's Manual

Mode1: PS1  
ViewSmart, Inc.  
[www.viewsmartinc.com](http://www.viewsmartinc.com)

## Boot and Shutdown

Boot: Press and hold the power button, the system will enter the boot process and the system will start, entering the Android system:



The system enters the default home interface:




Shutdown: Press the power button for 3 seconds. Or select power off , click OK, you can safely shut down.

## Connect with PC

When your device is connected successfully, to turn on usb storage, click , you will see the following picture:



Then click , it will show **USB computer connection**, click it, then it show as below.



Enter USB connection interface and click MTP icon, driver can be installed into the computer automatically.

## Attention

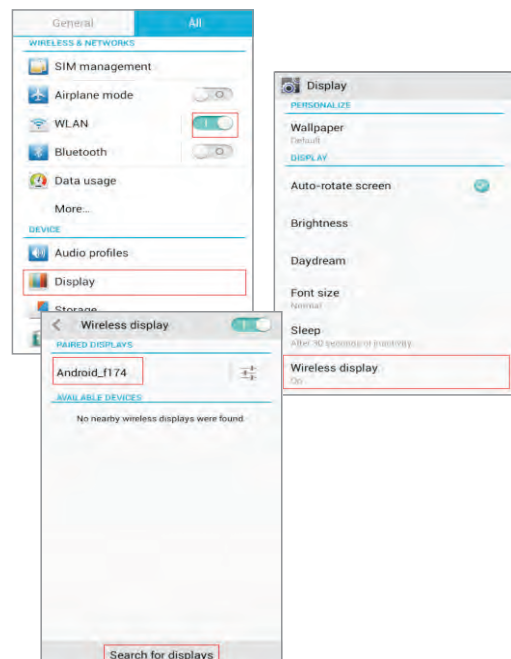
### Note:

This device can support USB OTG function, also can be connected with external USB drive.

## WiFi Display

### Set Mobile Phone

1. Use android system mobile phone, before you start to use WiFi display, you need to make sure that your mobile phone have been turned on the Wi-Fi, no matter whether the mobile phone is connecting the router or not.
2. Click the "Display" option, you will find Wireless display option:
3. Click "Wireless display", you will find peer devices, click the "SEARCH FOR DISPLAYS" to refresh the peer device list:



## Interface Introduction

### Bottom bar of the Interface



- VOL - VOL +
- Backspace
- Main interface

### The HOME Screen menu

Below icon is the main interface of the projector:




User can change wallpaper, switch applications by long-pressing the blank on main page.

### Desktop:

User can rearrange application icons by dragging them.

## Basic Operation

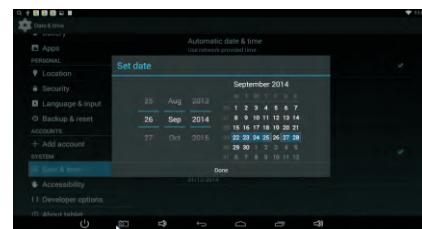
Click the "Settings" icon  in the main applications area, you can open the system setting interface, as shown below. Select the appropriate operation of the relevant items, such as: wireless and network, display, date and time settings, about device, etc.



### Date and time settings

Click "Date & time" to enter the Date and time settings interface. Select to set the date, select the time zone, set the time, time format, date format and other information. You can see the options like "Automatic date & time", "Select date", "select time", you can set the date and time according to your requirements.

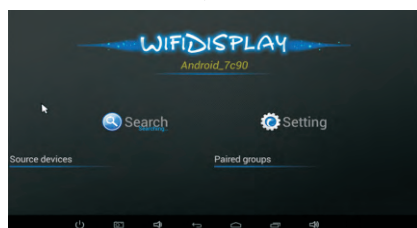
For example, choose to set the date, as follows:



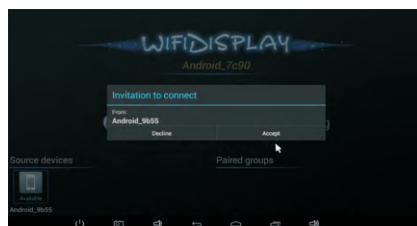
- Use the mouse or touchpad to select the year, month, date as you want, click "done".
- Also you can choose the number, enter the input mode. Directly entering the desired number, then click "Done" to set the Date.

### Set smart micro laser projector

1. Turn on the Wi-Fi on smart micro laser projector.
2. Open the APK WiFi Display . After go into this APK, you can find your device name: Android\_f174 (The device name could be changed to what you want by clicking Setting). If you can't find the peer device on projector, you can click "Search" for device name on mobile phone.



3. Connect: Click the available device name on mobile phone. Then the mini projector will have below interface. Click "Accept", wait for a moment, then connection will be established, and you can enjoy the WiFi display.

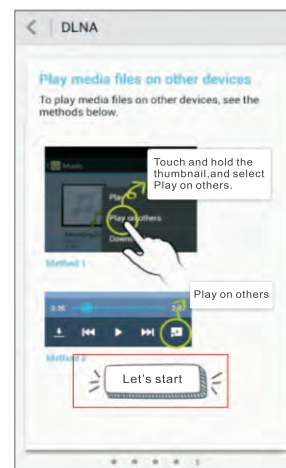


### ⚠ Attention

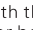
Different brand of mobile phone, the function of "WiFi display" maybe in the different place of setting. User must be based on your own mobile phone to set WiFi display operation. Some of mobile phones do not support wireless display. Some part of brand mobile phones such as Samsung, Sony and so on, because of HDCP copyright protection, our mini projector do not support their WiFi display.

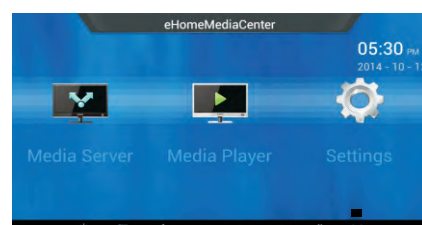
## DLNA

1. Turned on and connect the WiFi of your mobile phone. Open DLNA, click  as shown below; Add the pictures, music, videos that you want to share with smart micro laser projector.



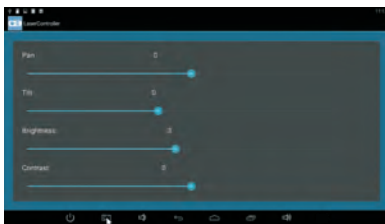
2. Open the smart micro laser projector, turn on the WiFi and connect with the network. Make sure that the

WiFi is in the same network with the mobile phone. Select , you will enter below interface:



## Projector settings

In the main interface choose "Laser controller" to enter the settings interface.  
In the setting interface there are a few control options. you can adjust project angle, brightness, contrast, etc. If project image seems blur or has ghosts after long-term used, you can adjust PhaseCorrection/Optical alignment options to improve it. You can slide interface up and down to view more control options.



## Wireless Connection

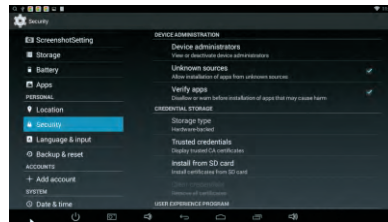
Click the main menu "Settings" icon, go to "Settings" screen, click on "Wireless and networks" into the "Wireless and networks settings" interface. Turn on Wi-Fi switch, the Wi-Fi module built-in the device will search AP lists automatic, click the searched AP can be used, will pop up settings dialog, please follow the prompts to complete the WIFI network links. Some encrypted network, need to enter a valid key. As shown below.



## Applications install and uninstall

### Install applications

1. Click "Setting", then "Security", select "Unknown sources" (as below picture), can install applications.
2. Copy the APK installer software to TF card or NAND FLASH.
3. Click APK Installer to find the app directory, and select applications to install. Users can use "Android market" online installation, or download via the computer, or online through the machine built-in browser to download and install.



### Uninstall applications

Click on the item "Settings - Apps - Downloaded", select the appropriate application has been installed, click the applications which you need to uninstall.

## Browser

When the network connected, open the Web browser enter the URL, you can quickly browse the Web or through the main desktop search bar enter the URL, open the web page.

## Video player

Native video: Click video icon . User can choose video for playing through local memory and insert TF card.

## Music player

Click the music icon you can enter the music player interface. Click the music files you will enter the player to play music.

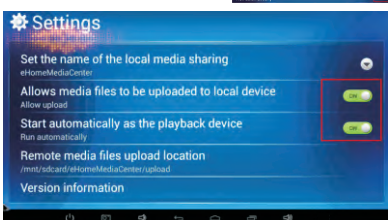


## Photo Browser

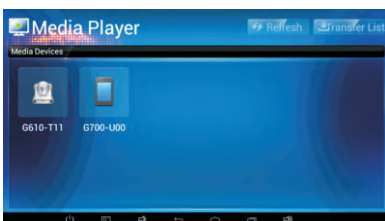
Click "Gallery", here we can browse all the picture files and video files. Choose the picture file you want, as shown below, Select a picture and enter the picture playback interface, as shown below. "zoom", "narrow", "set" and "delete" etc., operations can be selected. Also you can edit the picture. Here you can choose how to use the pictures. For example, select "Set pictures as", you can use the picture as Contact photo or Wallpaper.



3. Select the "Settings", make sure that these two options are on.



Then click "Media Player", you will see the media devices.



Select the device of your mobile phone. For example, click G610-T11, (enter below interface). Here, you can enjoy photos, video, music with smart micro laser projector.



## Attention

- The operation of setting DLNA is different according to brand of smart phone, also there are some of the mobile phones don't have function of DLNA, the user should operate the DLNA according to the smart phone's properties.
- You must add the files in DLNA from your mobile phone which you want to share with smart micro laser projector.
- For some DLNA application, you don't need to set up can share the multimedia files directly, please refer to your mobile phone application instructions.

## Frequently Asked Questions

Q: What Android OS version is on my Device?  
A: 4.4.2

Q: What is APK?  
A: APK is Android Package acronym that is an Android software installation package.

Q: How to obtain the APK?  
A: You can download via PC-side installation, you can also use the "Android markets" online to download and install.

Q: Can I use any of my personal email addresses to send/receive email?  
A: The device supports POP3 and SMTP accounts. You can send/receive emails.

Q: Which media cards are compatible with my Device?  
A: Micro SD cards or TF cards.

Q: What type of music files can I play on my device?  
A: MP3, MP2, OGG, AAC, M4A, FLAC, APE, WAV Photos.

Q: What type of photo files can I view on my device?  
A: JPG, JPEG, BMP, PNG and PNG.

Q: What type of video files can I play on my device?  
A: AVI, 3GP, MP4, MPG, MOV, FLV, MKV(max 1080p full HD video)

Q: Do I need a Wi-Fi adapter to connect to the Internet?  
A: No. The Wi-Fi adapter is built-in to the device.

Q: Why the projection has Auto Stand-by and Sleep Mode with the time going?

A: The highest operating temperature is 62 degrees, over this temperature the system has been set Auto Stand-by and Sleep Mode.

## TIPS

- This device adopts built-in polymer battery. Please use mini USB cable to recharge.
- When it is recharging, the red light on the trackpad will be turn on.
- When the recharging finished, the red light will turn green.
- If you do not use this device for a long time, please recharge/release it regularly. The damage caused by battery over-consuming is not included in the warranty.
- When it is power off because of low battery, connect to the charger.

## Important Safety Precautions

- Always follow these basic safety precautions when using your smart micro laser projector, avoid the risk of fire, electric shock, and injury.
- Do not expose this product to rain or moisture. Keep the device out of direct sunlight and heat sources. Protect the power cord. Pay particular attention to the point where the cord attaches to the device.
- Do not remove the cover. There are no user-serviceable parts inside. Clean your Device Treat the trackpad gently. To clean fingerprints or dust from the trackpad, we recommend using a soft, non-abrasive cloth such as a camera lens cloth.
- Drop can result in damage to laser module.
- Do not look directly into the laser light source or point the light toward the others eyes. Otherwise it may cause serious eye damages.
- Product information are subject to change without prior notice.

## FCC Information and Copyright

This equipment has been tested and found to comply with the limits for a Class B digital device, pursuant to part 15 of the FCC Rules.

These limits are designed to provide reasonable protection against harmful interference in a residential installation. This equipment generates,

uses and can radiate radio frequency energy and, if not installed and used in accordance with the instructions, may cause harmful interference

to radio communications. However, there is no guarantee that interference will not occur in a particular installation. If this equipment does

cause harmful interference to radio or television reception, which can be determined by turning the equipment off and on, the user is

encouraged to try to correct the interference by one or more of the following measures:

- Reorient or relocate the receiving antenna.
- Increase the separation between the equipment and receiver.
- Connect the equipment into an outlet on a circuit different from that to which the receiver is connected.
- Consult the dealer or an experienced radio/TV technician for help.

This device complies with part 15 of the FCC Rules. Operation is subject to the following two conditions:

- (1) This device may not cause harmful interference, and
- (2) this device must accept any interference received, including interference that may cause undesired operation.

changes or modifications not expressly approved by the party responsible for compliance could void the user's authority to operate the equipment.

This equipment complies with FCC radiation exposure limits set forth for an uncontrolled environment. This equipment should be installed and operated with minimum distance 20cm between the radiator & your body. This transmitter must not be co-located or operating in conjunction with any other antenna or transmitter.