

Biu Frame User Guide

Shenju tech Co., Ltd

2021.7.22

v1.0.0

1. Biu Frame APP

1.1. Download Biu Frame APP.

Plan-A Scan the QR code to download APPS.



Plan-B Please search and download in "Apple APP Store" OR "GOOGLE Play".

1.2. Create new account



1.2.1. Open Biu Frame APP.



How to install BiuFame APP?

(Please refer to the instructions in 1.1, download and install in advance).

1.2.2. Please click "Sign in" to register.



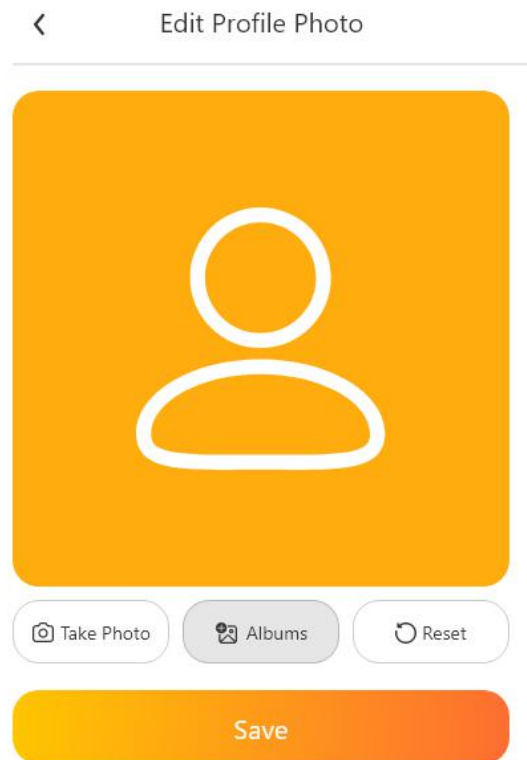
 

[Forgot Password ?](#)

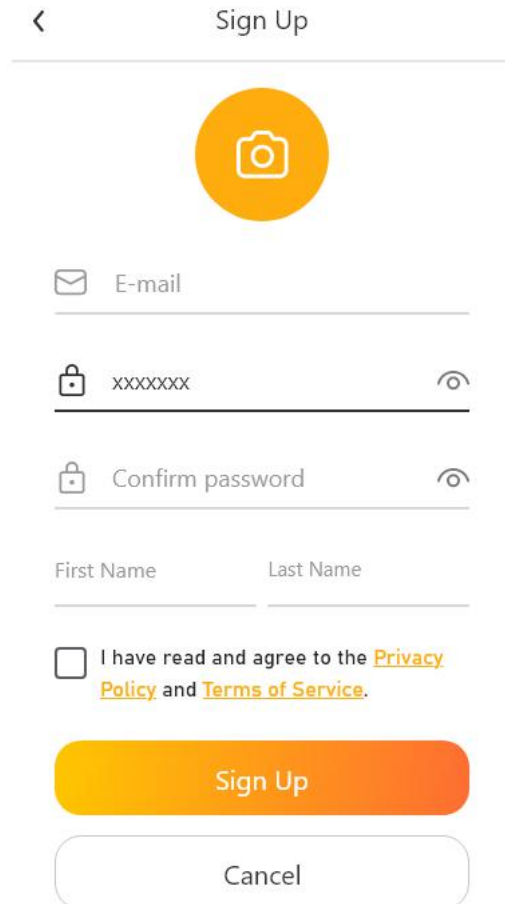
1.2.3. Please click to add your avatar.

You can choose one as your avatar by taking a photo or choose a picture in your album.



1.2.4. Please fill in the E-mail, login password, name, etc. in sequence.

Please fill in a real and valid email address. In order to protect the security of your account and facilitate future forgetting of your password, you need to reset your password and retrieve your Account.



The screenshot shows a mobile app's 'Sign Up' screen. At the top, there is a back arrow and the title 'Sign Up'. Below the title is a large orange circle with a white camera icon. The form consists of several input fields: an 'E-mail' field with an envelope icon, a password field with a lock icon and placeholder text 'xxxxxxx', a 'Confirm password' field with a lock icon, and two fields for 'First Name' and 'Last Name'. Below these fields is a checkbox with the text 'I have read and agree to the [Privacy Policy](#) and [Terms of Service](#)'. At the bottom, there are two buttons: a large orange 'Sign Up' button and a smaller white 'Cancel' button with a grey border.

1.2.5. If you read and agree, please tick the agreement option.

Tips:

It is recommended that you read the content of the agreement carefully.

We have elaborated many statements in the agreement, which can answer many doubts about

your future use.

1.2.6. Please click "Sign Up" to complete your account creation.

1.2.7. Congratulations, you have a new account with your own frame.

Please remember your E-mail and password, they are very important, you need to log in to the App.

If you need to log in to a new account, please click the back button in the upper left corner to enter the login interface.

1.3. Log in

Please remember your E-mail and password, they are very important, you need to log in to the App.

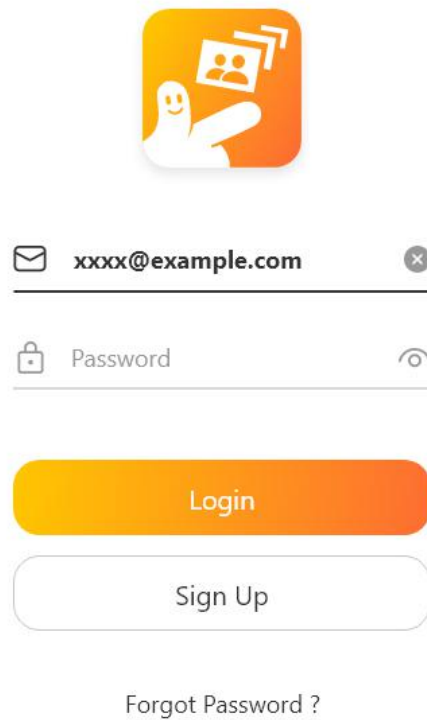
If you need to log in to a new account, please click the back button in the upper left

corner to enter the login interface.

1.3.1. Please enter Email and password in turn, and click "Log in".

Note:

For more security, if your account is already logged in on other machines, This login will automatically log out of your other devices.



The illustration shows a login interface. At the top is a square icon with a yellow-to-orange gradient, featuring a white hand holding a card with two people icons. Below this are two input fields. The first field has an envelope icon on the left, the text 'xxxx@example.com' in the center, and a close 'x' icon on the right. The second field has a lock icon on the left, the text 'Password' in the center, and an eye icon on the right. Below the input fields are two buttons: a solid orange rounded rectangle labeled 'Login' and a white rounded rectangle with a gray border labeled 'Sign Up'. At the bottom is a link labeled 'Forgot Password ?'.


1.3.2. Successful Login


If the login is successful, it will automatically enter the main interface.

TIPS: If you fail to log in multiple times, please try to click "Forgot password" to reset the new password, and then log in again.


1.4. Forget the password


1.4.1. Please click“Forget Password”button.






xxxx@example.com





Password



Login

Sign Up


Forgot Password ?

1.4.2. Please enter the E-mail you used when creating a new account and click "Send".

<

Forgot Password

Please input your Email:



E-mail

Cancel

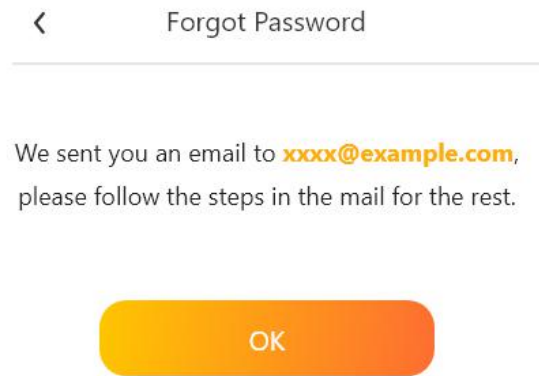
Send

1.4.3. The cloud service will send an email with a link to your Email.

This link will guide you to reset your password.

Our cloud service will send an email with a link to your E-mail.

This link will guide you through the password reset

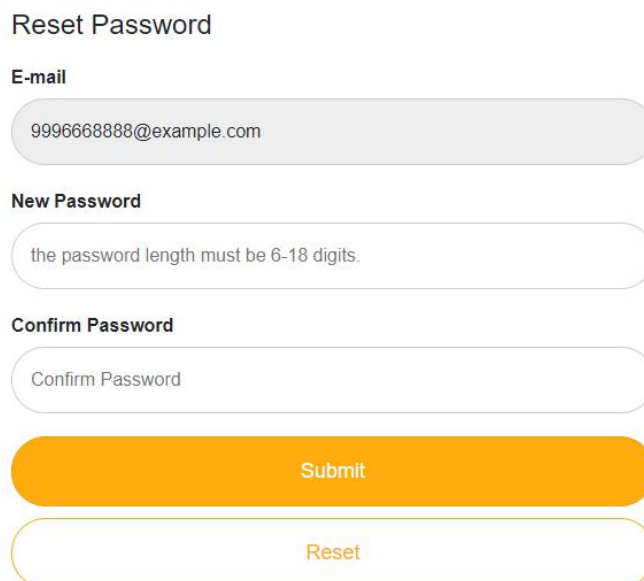


1.4.4. Check if your EMAIL has received an email with the subject "ResetPassword".

Note: That the subject of the email we send is "ResetPassword" and the sender is Service@cloudphontoframe.com. Please confirm and click on the link to prevent from being infringed by forged email.

1.4.5. Open the email and click on the link.

1.4.6. Enter your new password in the web page that opens.



1.4.7. Click "Submit" to submit.

TIPS:

For your information security, after the reset is successful, the original reset link will automatically become invalid. If you need to reset the password again, please send the email again.

1.5. Add a photo frame

1.5.1. Please click "AddFrame" to open the add frame interface.

After the login is successful, if you haven't added any frames, the APP will automatically open the "AddFrame" interface for you to guide you through adding frames.

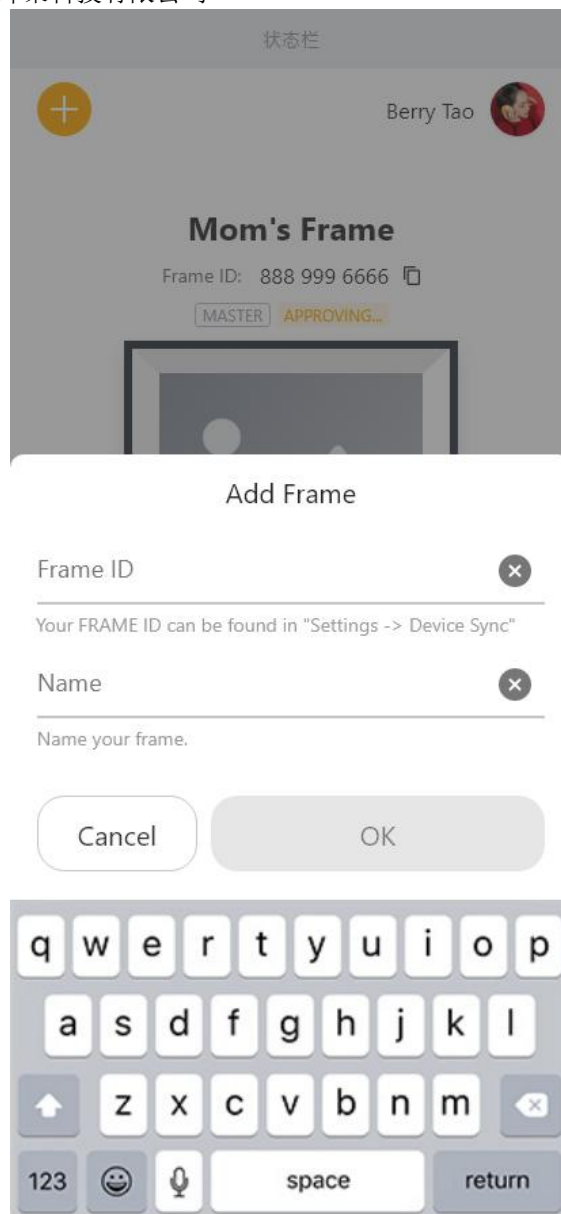


1.5.2. Enter "Frame ID" to name the frame.

The Frame ID is a code with 10 digits, After you activate the device, it will be displayed on the last page of the wizard (as shown in the figure)

If you have already completed the wizard, please proceed to your desired device one by one:

Settings---->Friends, your FrameID will be displayed below.



1.5.3. Click OK button to finish adding.

TIPS:

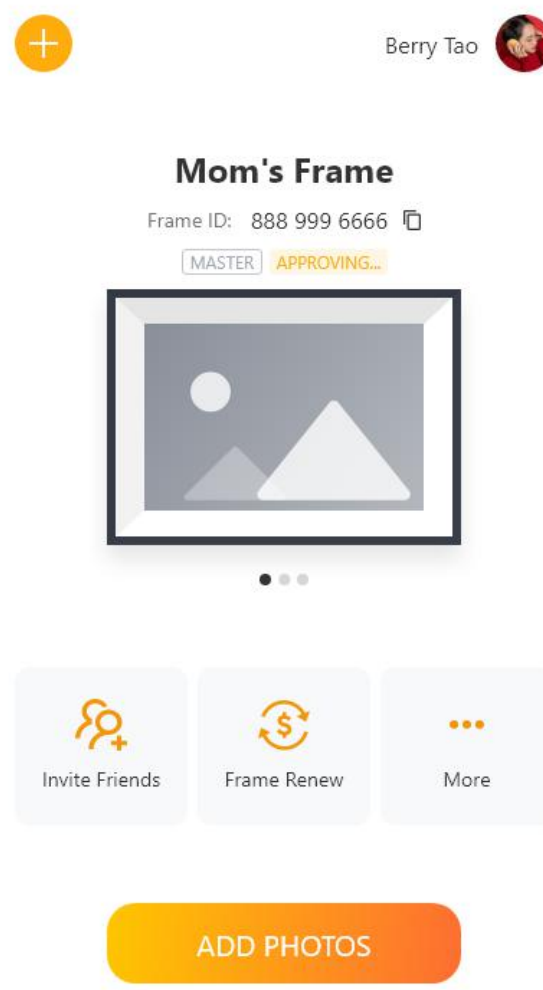
If you fail to add, please check that your Frame ID is entered correctly.

1.6. Send photos

After adding the frame successfully, You can view your frame on the homepage

1.6.1 Click "Add Photos".

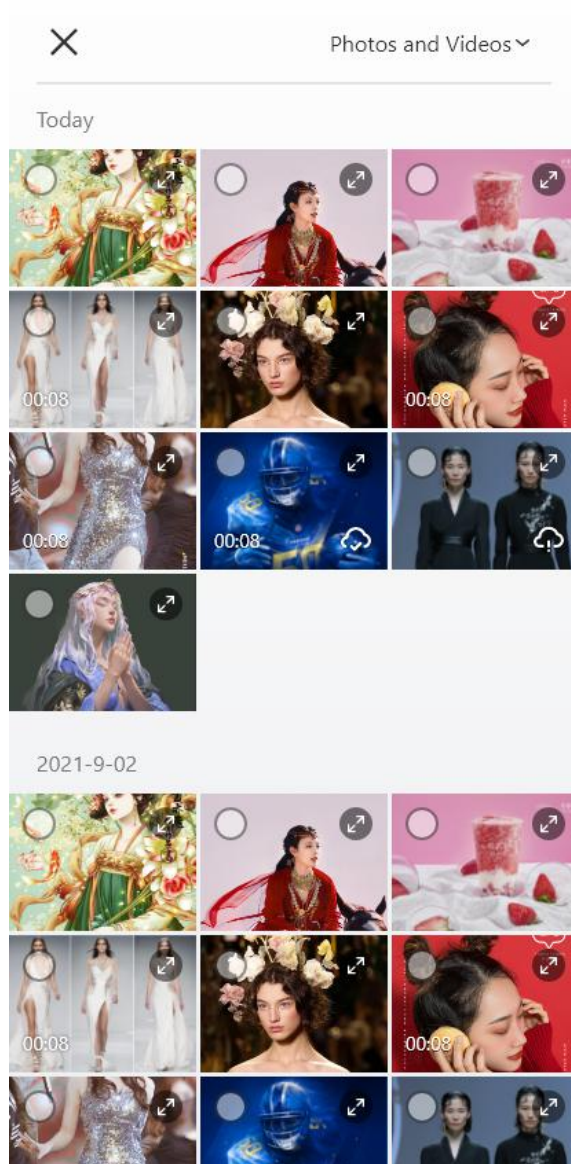
1.6.1. Click“Add Photos”button.



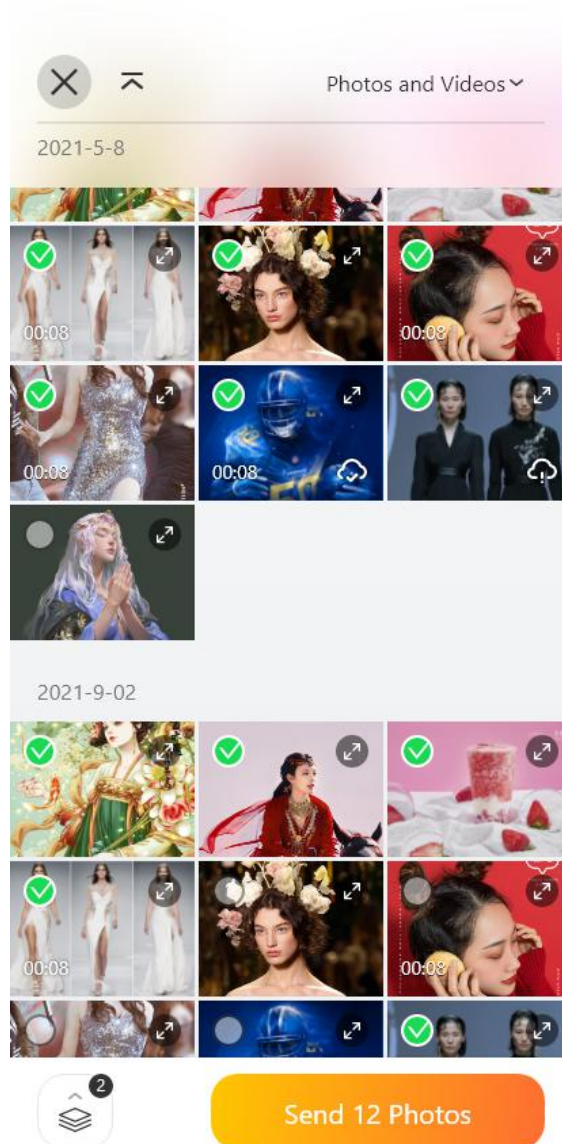
1.6.2. Choose photo or video.

TIPS:

Only supports videos up to 30s long, such as ultra-long Biu Frame APP will guide you to crop a suitable segment for sending.



1.6.3. Click“Send”button.

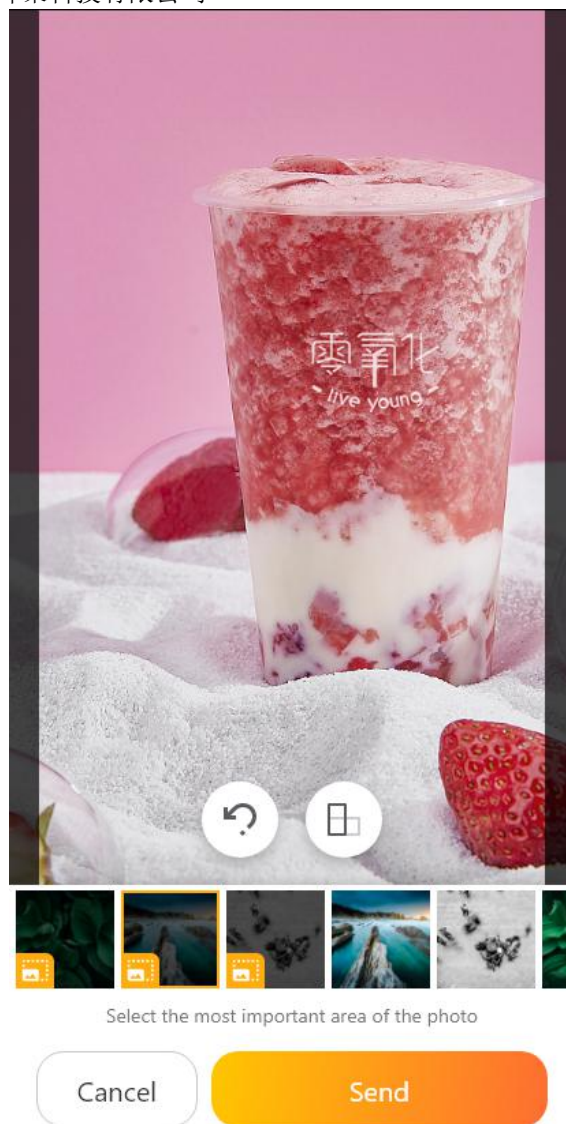


1.6.4. Mark key areas for your photos.

This function will help you display the key objects in the verse of the photo frame better . If you move your pet to the middle of the view, the album will be displayed as you preview it in the APP, even if the photo frame is rotated. It is automatically displayed in the center position.

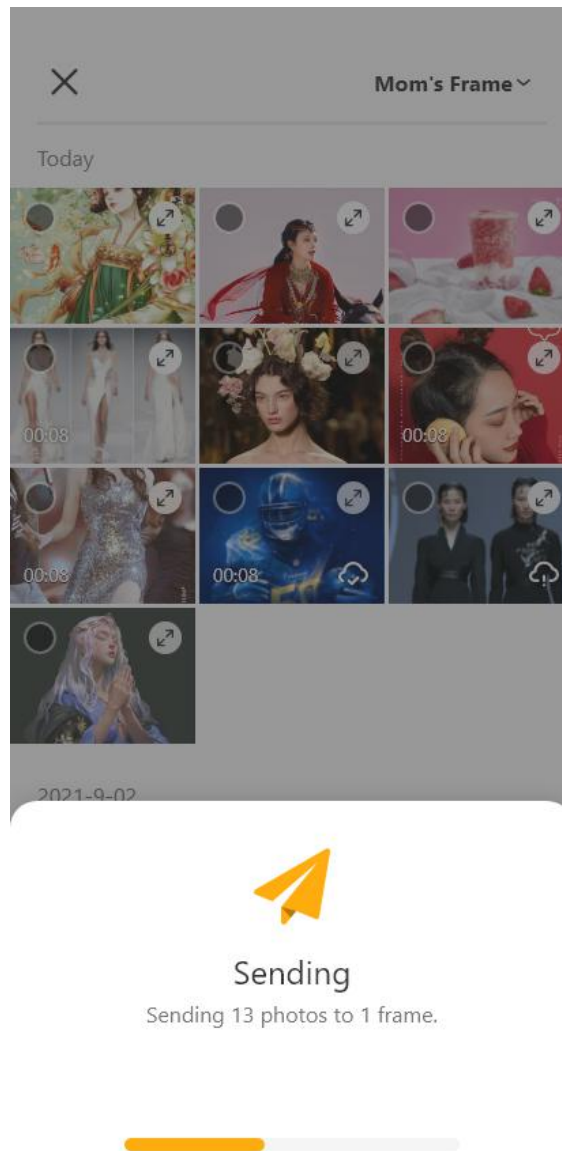
Note :

This function is only used to mark the center position and view area of the photo, and will not crop the photo, so your photo will not lose any details.



1.6.5. Click "Send" button to send the photo immediately.

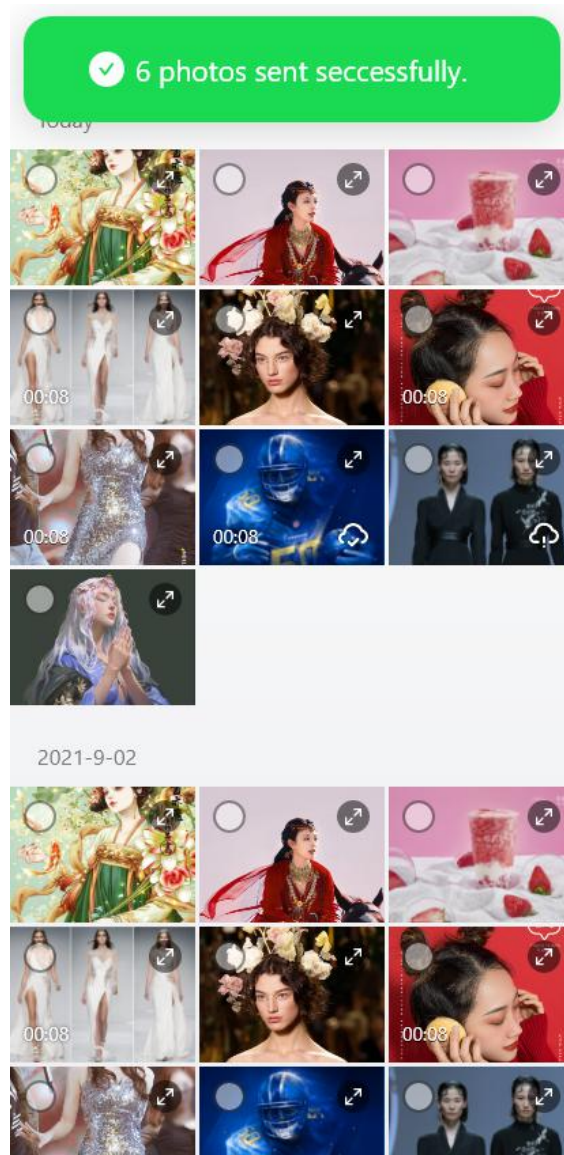
1.6.6. Sending



1.6.7. Send complete.

After sending, your photo frame will be able to receive new photos immediately.

TIPS: If you do not receive the picture for a long time, please check whether the WIFI network of your photo frame is connected, or whether the network environment is smooth, the photo will be sent to the photo frame within 48 hours, please resend after the deadline.



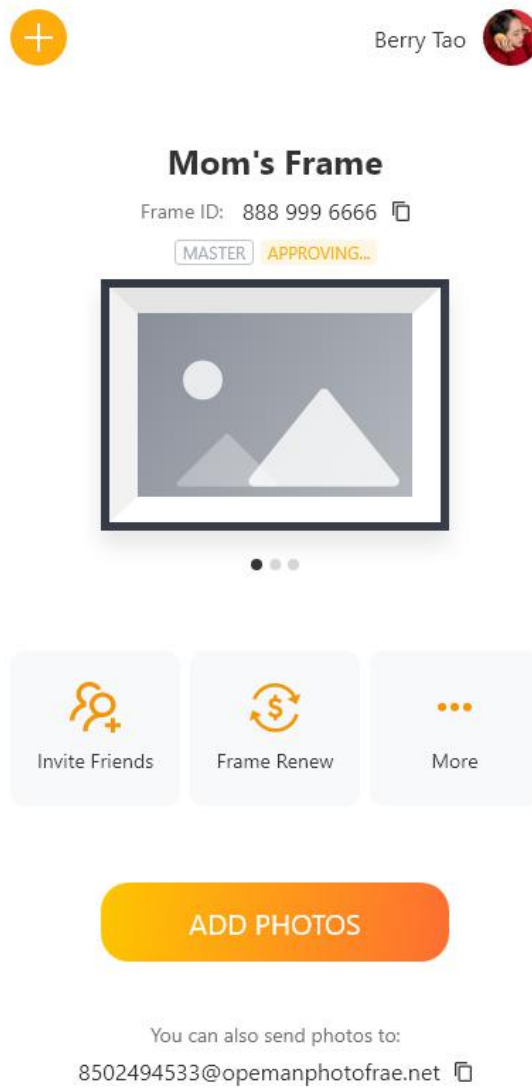
1.7. Manage photo frames

1.7.1. Invite friends.

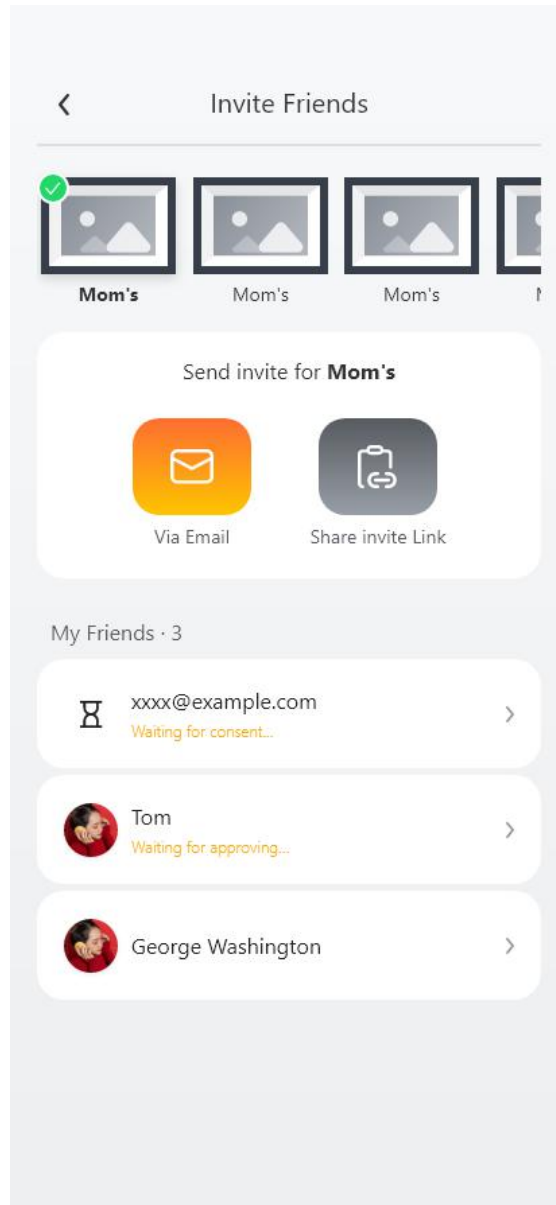
After adding the frame, you can invite your family and friends to send wonderful photos to your frame through the invite friends function.

Supports sending and clicking emails to send invitations and copying links to invite friends. The latter is more convenient for inviting your friends in social software.

1.7.1.1. Click "Invite Friends" button.

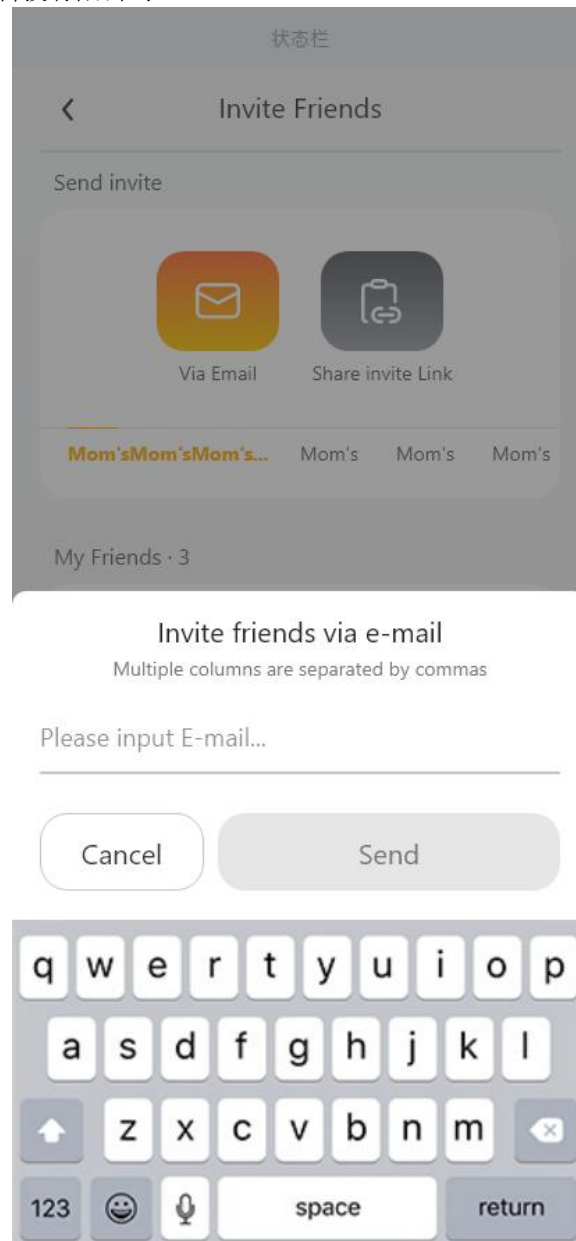


1.7.1.2. Choose a photo frame that needs to be shared.



1.7.1.3. Invite friends via email.

Enter the email address of your friend (support adding multiple emails at the same time, separated by commas) and click "Send" to send the invitation.



1.7.1.4. Invite friends by copying the link.

After clicking the button, the sharing application selection node will pop up automatically;

After selecting the application, share the information to various social software;

Notify your friends to add as prompted.

1.7.2. Name the photo frame

Click "Rename" and enter a new name, and you can submit it.

1.7.3. Remove photo frame binding

Click "Remove" to remove the binding of this photo frame .

1.8. Edit name

1.8.1. On the homepage, click on the profile picture in the upper right corner.

1.8.2. Select "Rename" in the menu.

1.8.3. Modify your First Name and Last Name.

1.8.4. Click "OK" to complete the modification.

1.9. Change password

1.9.1. On the homepage, click the avatar icon in the upper right corner.

1.9.2. Select "Password" in the drop-down menu .

1.9.3. Fill in "Old Password", "New Password", "Confirm New Password" .

1.9.4. Click "OK" to complete the modification .

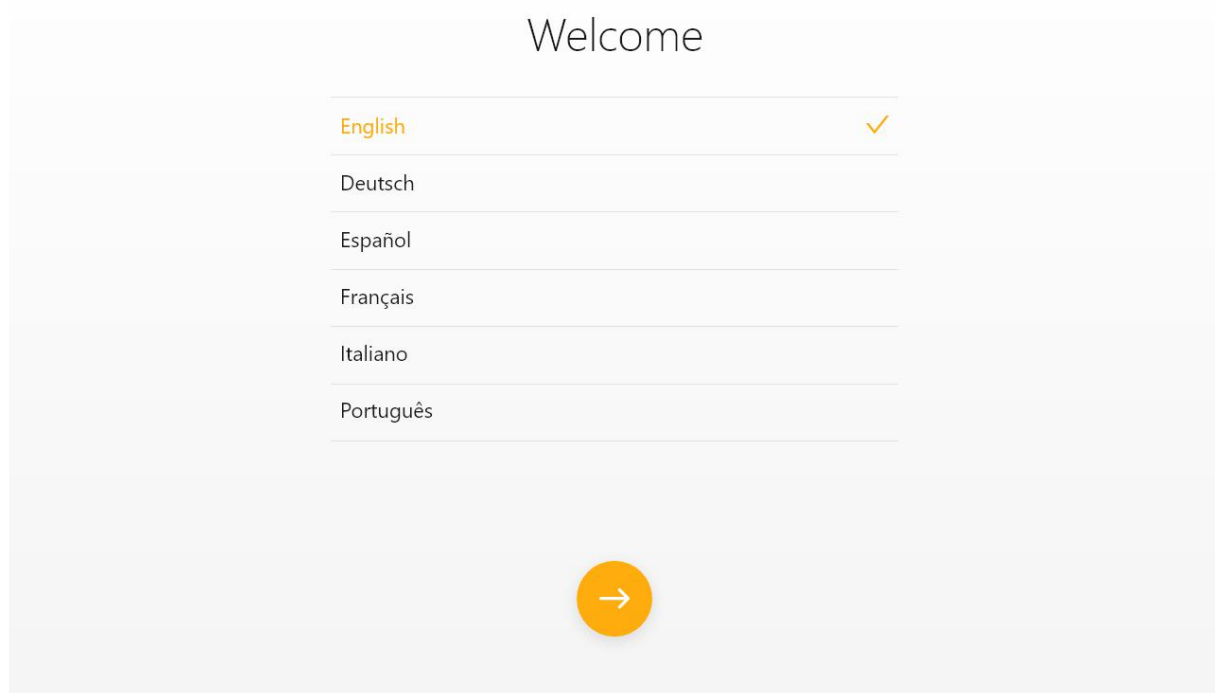
2. Biu Frame Device

2.1. Activation

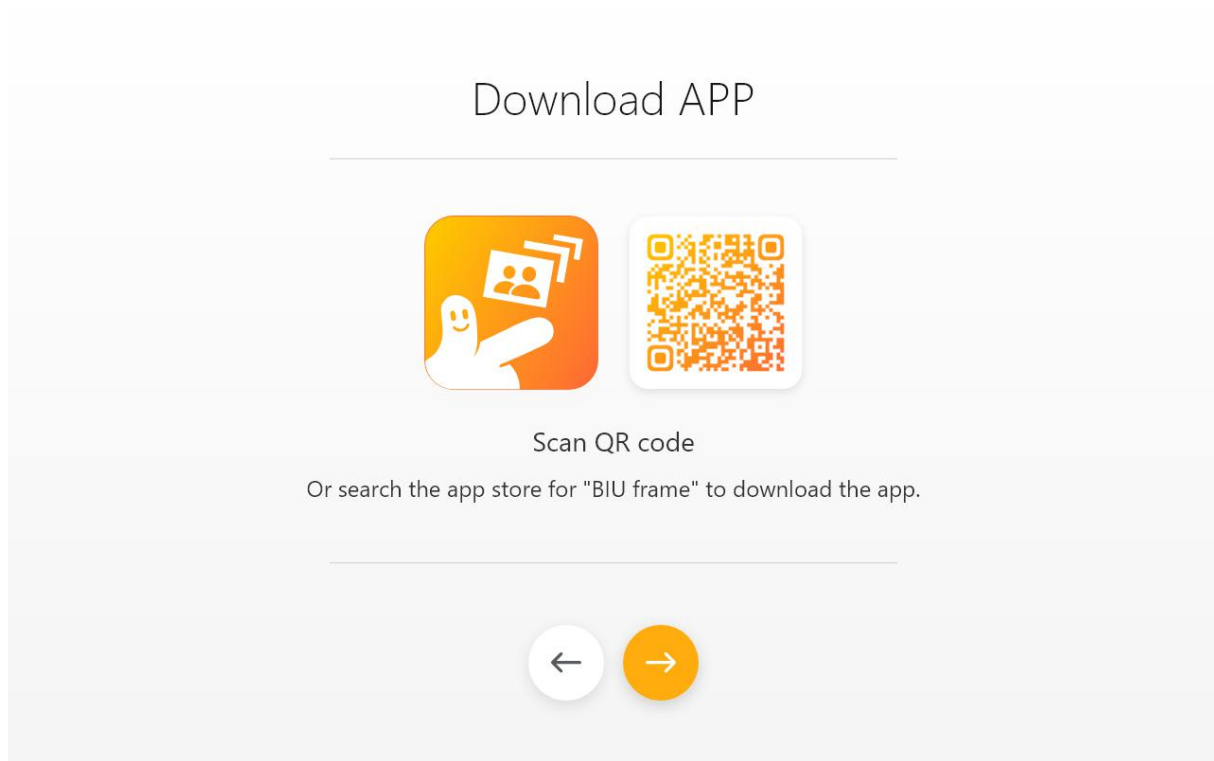
2.1.1. Power on the device .

2.1.2. Wait for automatic boot .

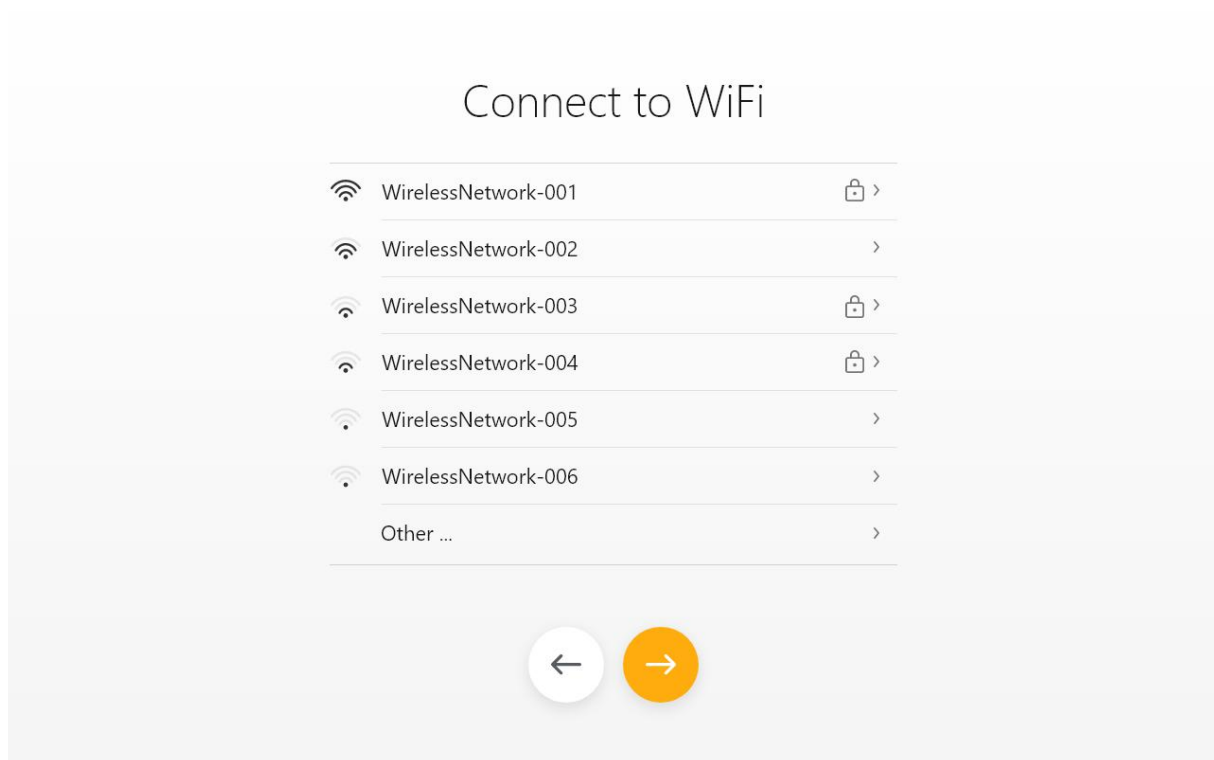
2.1.3. Choose a language .



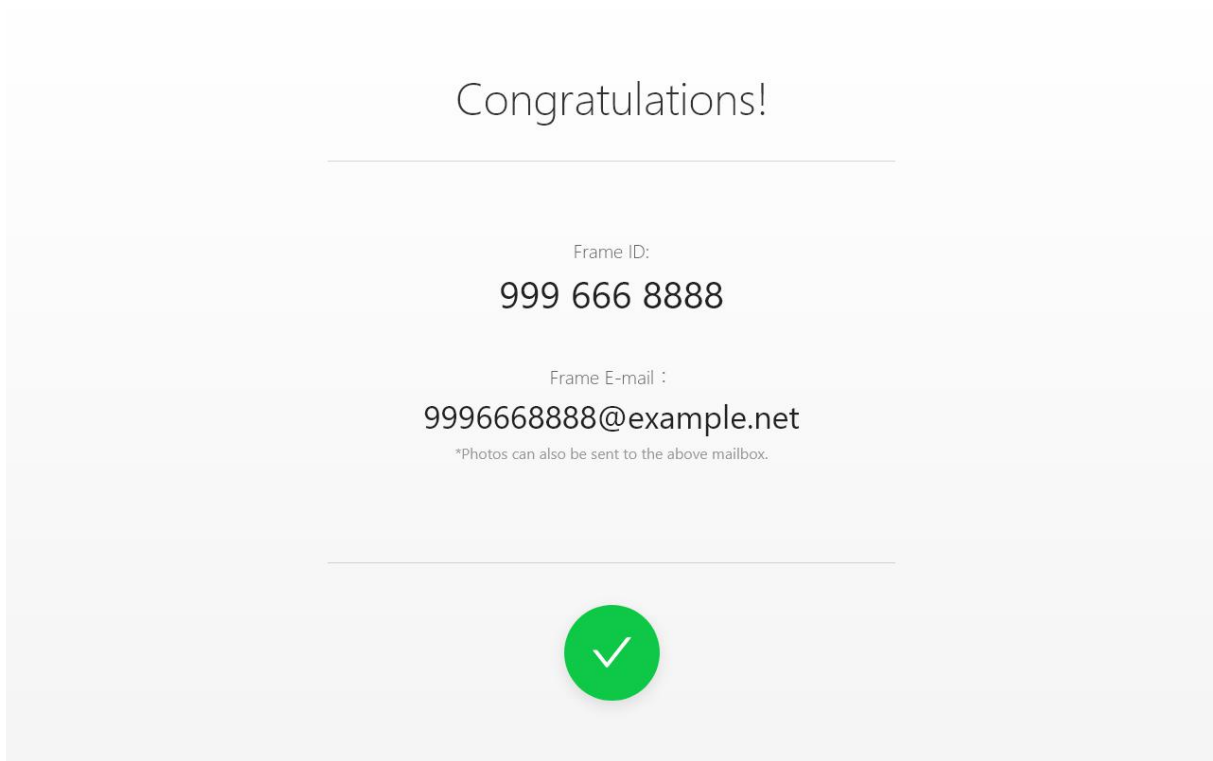
2.1.4. Download APPS



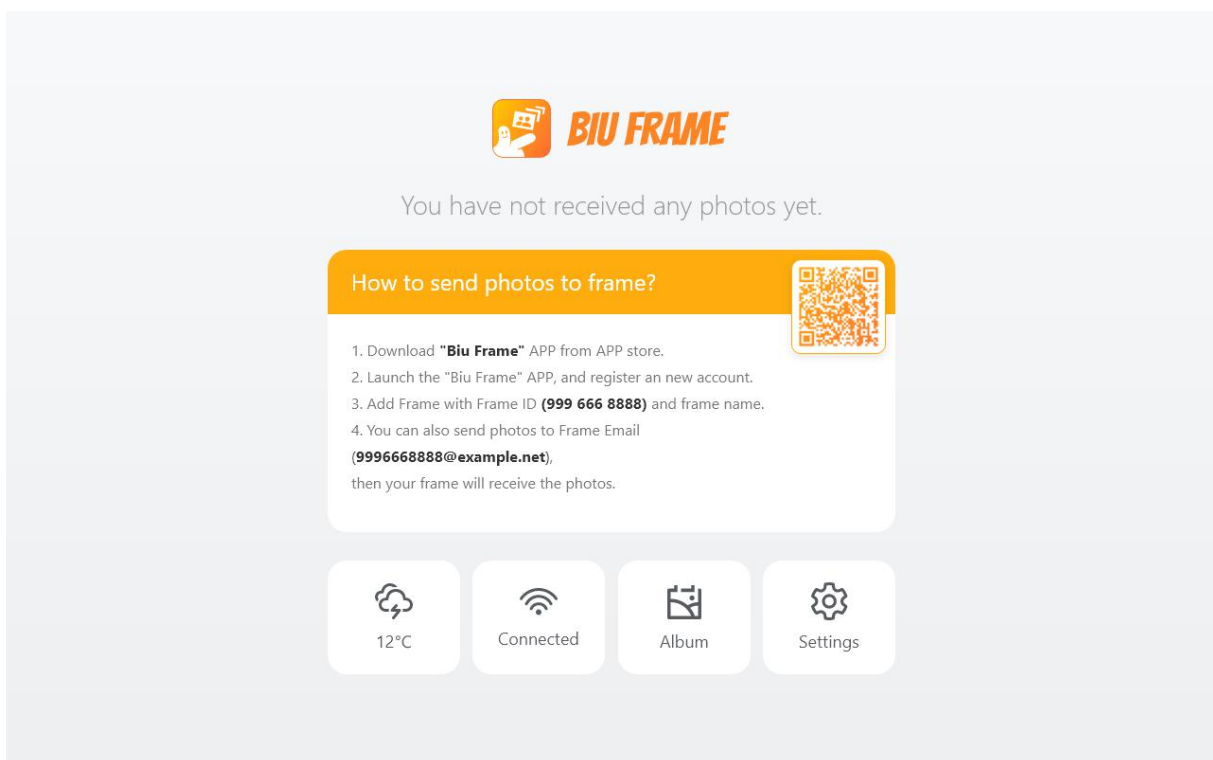
2.1.5. Link wireless settings



2.1.6. Activate the frame

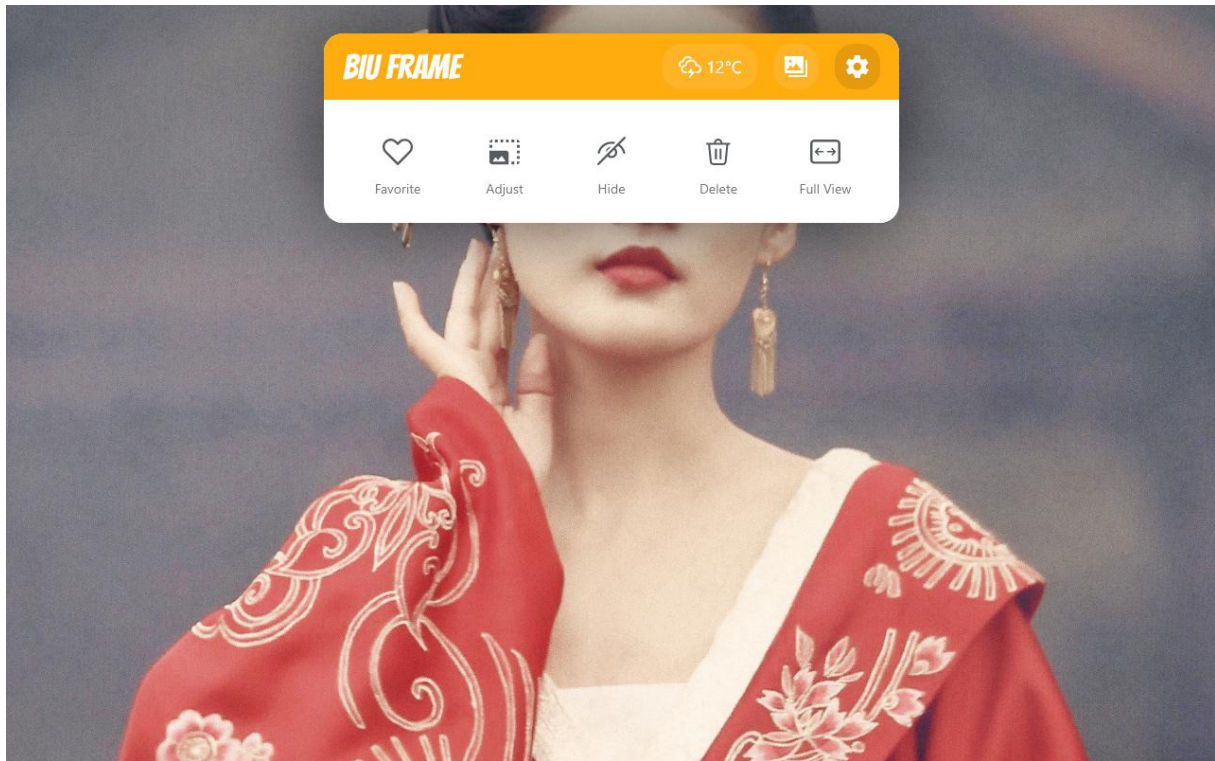


2.1.7. Finished



2.2. Photo management

2.2.1. When playing a photo, click on any area of the picture to display the completion panel.



2.2.2. Click the album to enter the album.

2.2.3. Album categories now.

Frame Photos: Contains all photos on the frame (including USB Driver, SD Card)

Friends Photos: Contains all bound friends and your own network sent through.

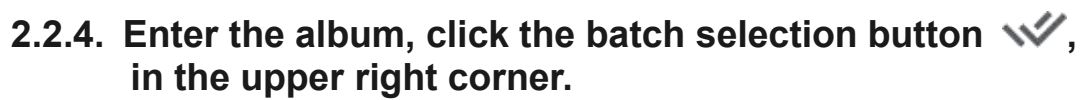
Videos: Contains all the videos on the photo frame.

Favorites: Contains your tags, favorite photos and videos.

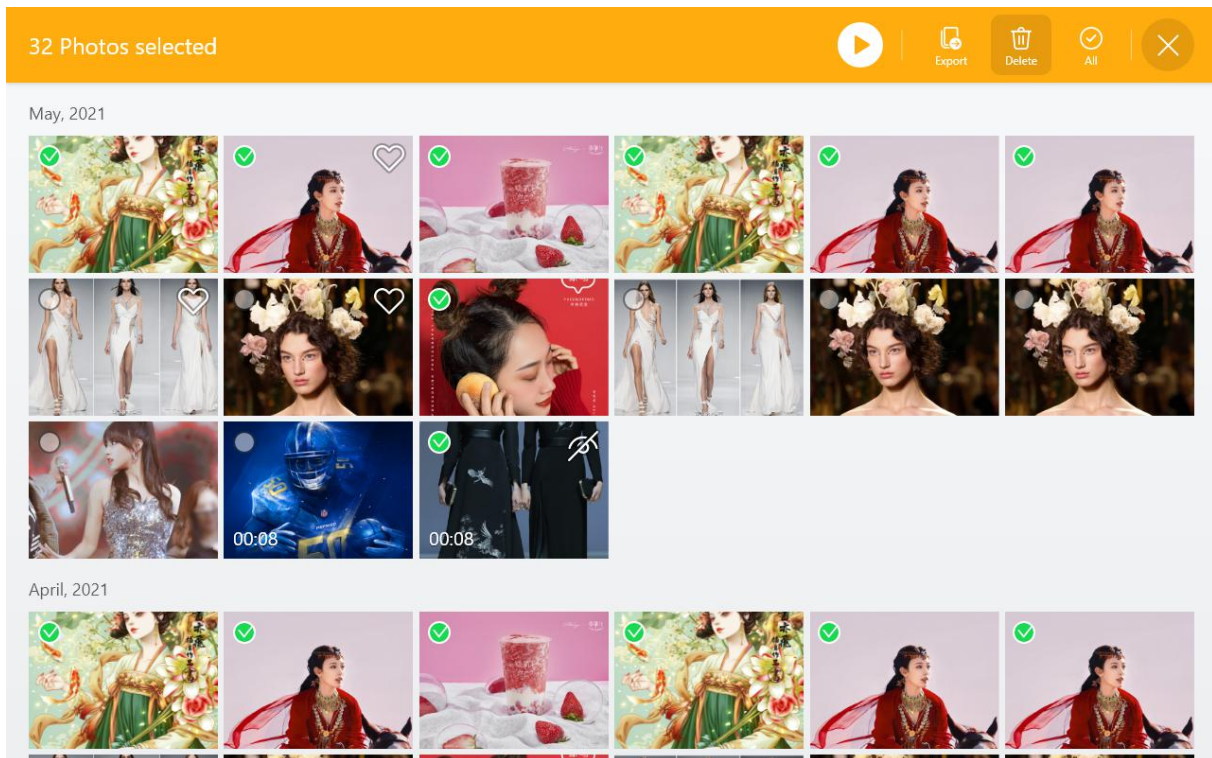
Hidden: Contains all tags, all Hidden photos and videos.

USB Driver: Contains photos and videos in the external U disk device, this item is only displayed when the U flash is inserted.

SD Card: Contains photos and videos in the external SDCard device. This item is only displayed when the SDCard is inserted.



2.2.5. After entering batch processing mode, it supports multiple selection of photos.



2.2.6. Click "Delete", "Export" or "Play", Batch process the selected photos.

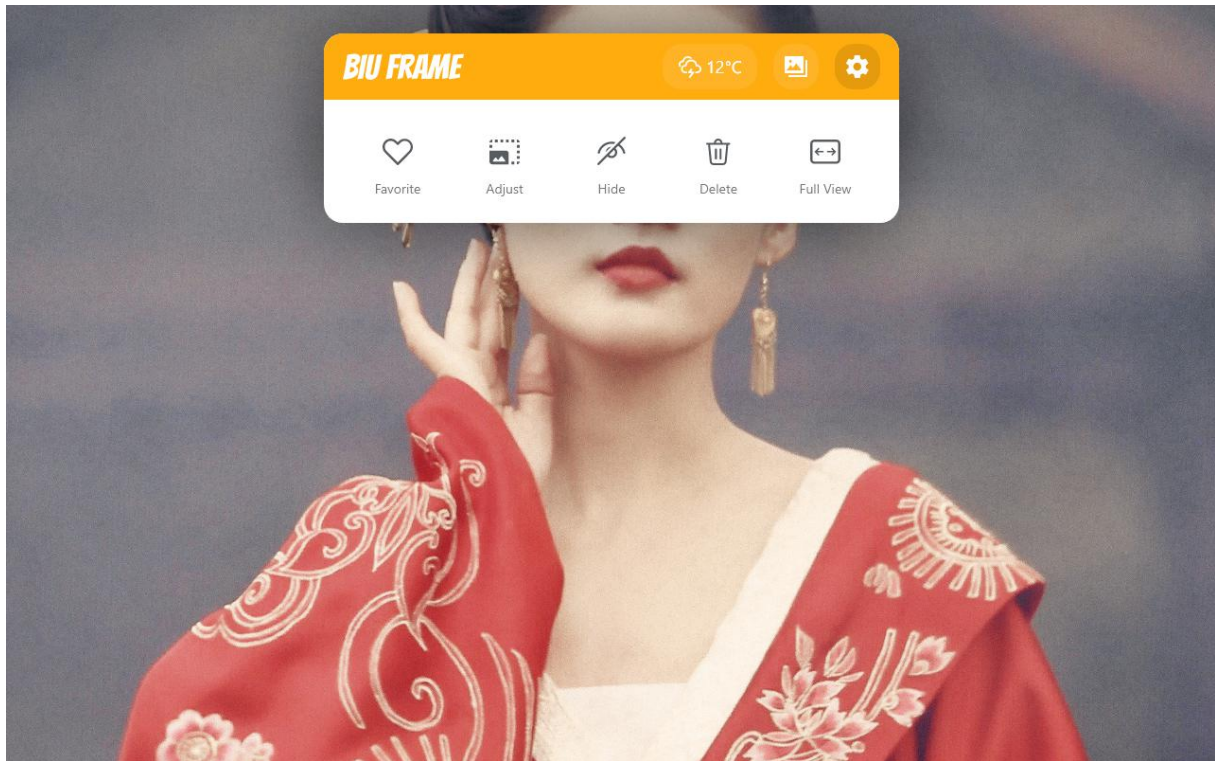
Delete: After clicking, the photo file will be completely deleted from the photo frame and cannot be recovered. Please operate with caution.

Export: After clicking, it will allow you to export the local photos to an external U Flash, SD card device.

Play: After clicking, it will start to play the selected photo immediately.

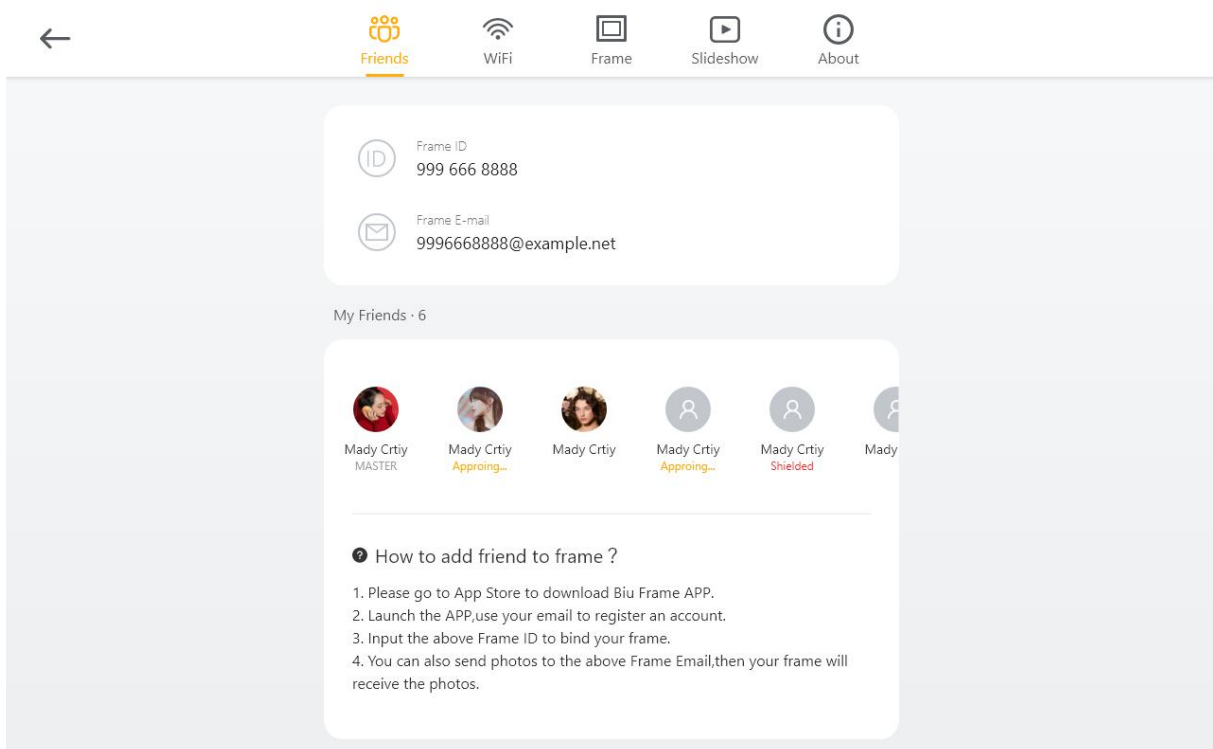
2.3. Set up a wireless network connection.

2.3.1. When playing a photo, click any area of the picture to display the operation panel.

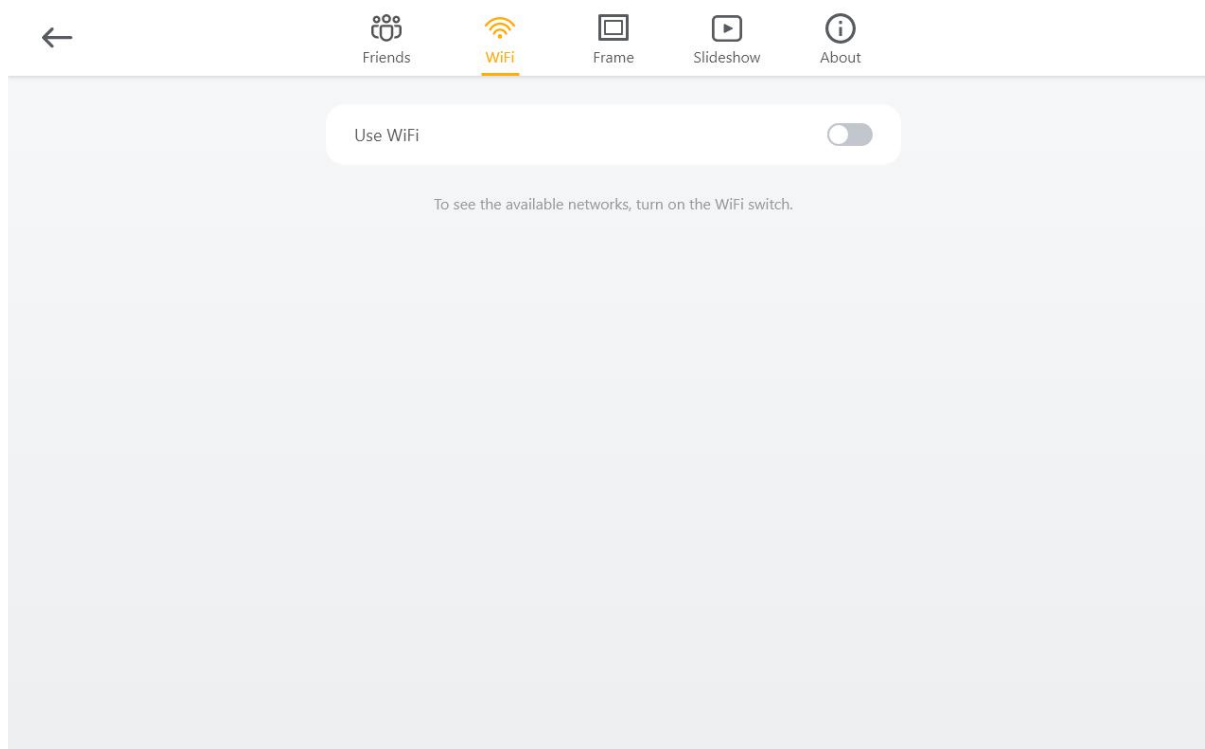


2.3.2. Click settings button , enter settings page.

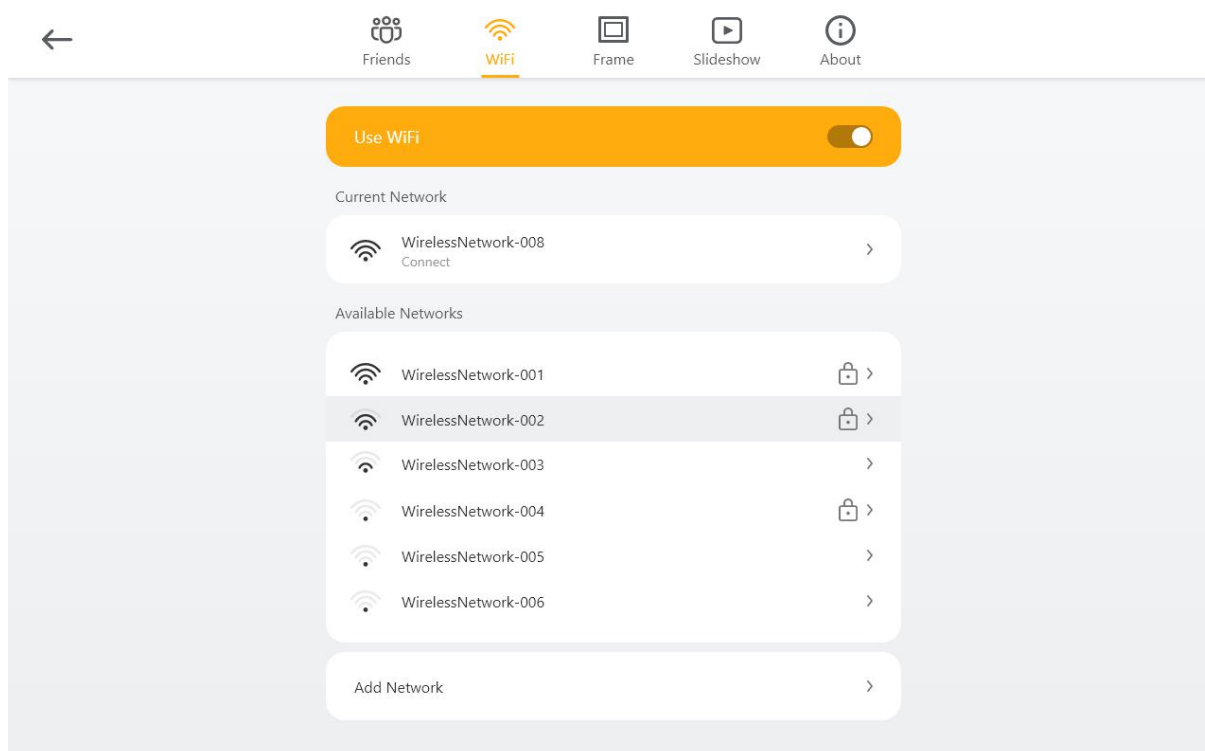
2.3.3. Select “WiFi” tab.



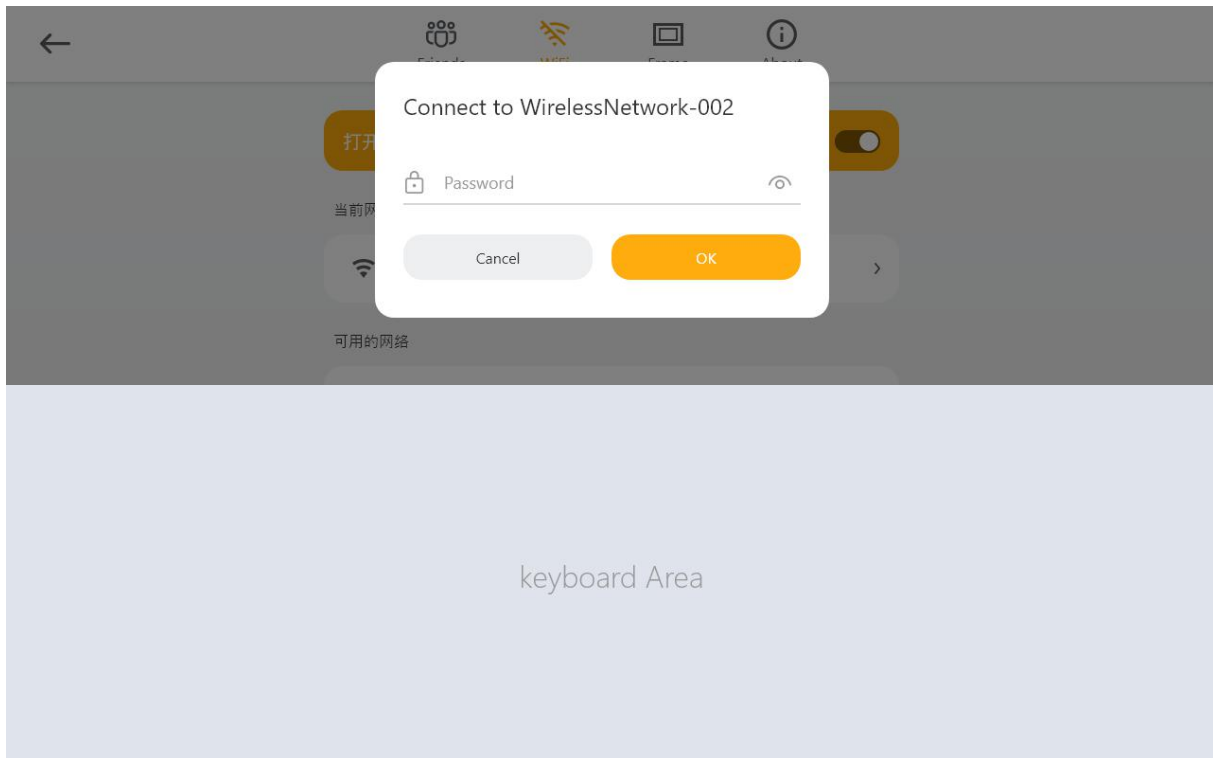
2.3.4. Click “Use WiFi” switch to turn on the wireless network.



2.3.5. Select your wireless network from the list and click.



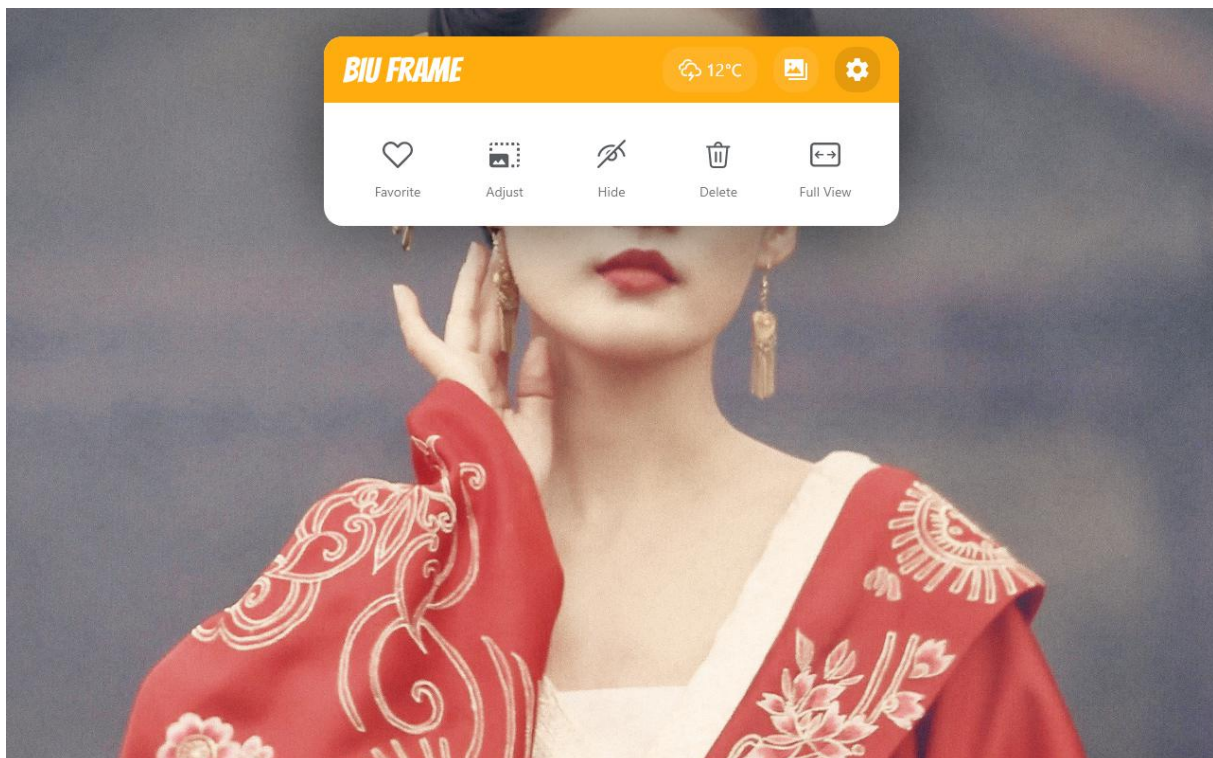
2.3.6. Enter the wireless network password and click OK.



2.3.7. The network will be automatically linked.

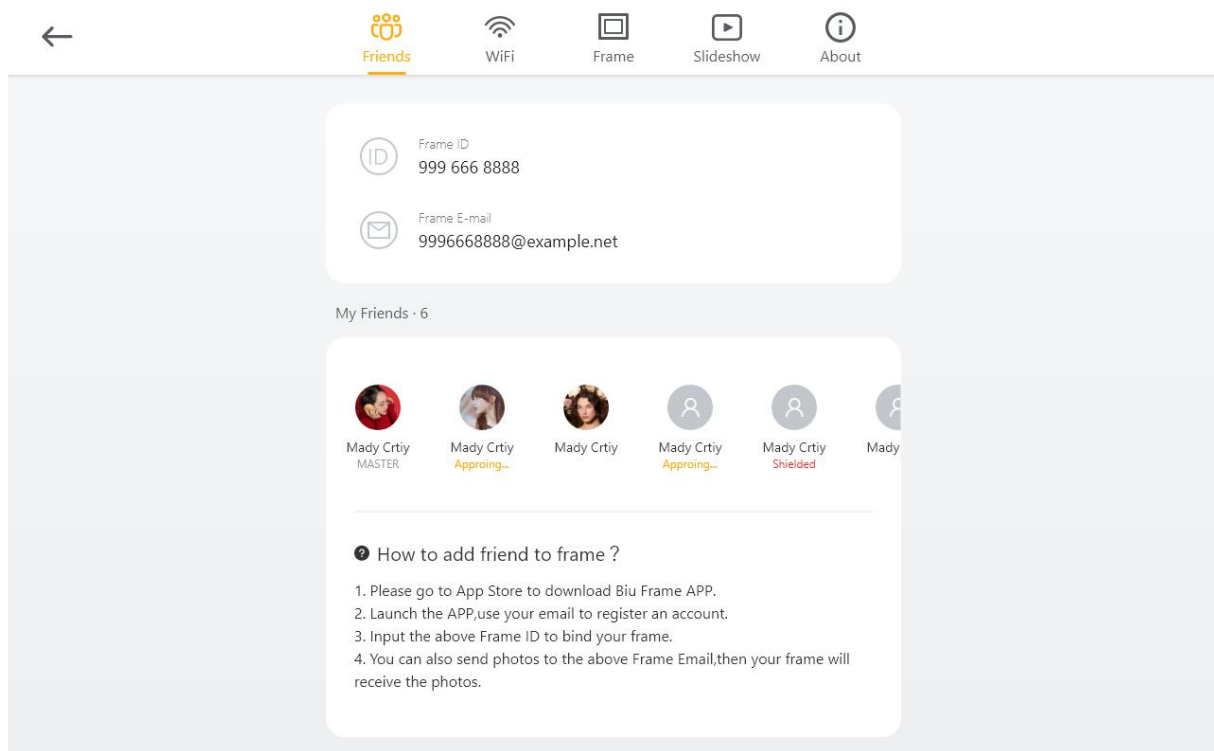
2.4. Set slideshow effect

2.4.1. To play a rally, click any area of the picture to display the operation panel.



2.4.2. Click settings button , enter settings page.

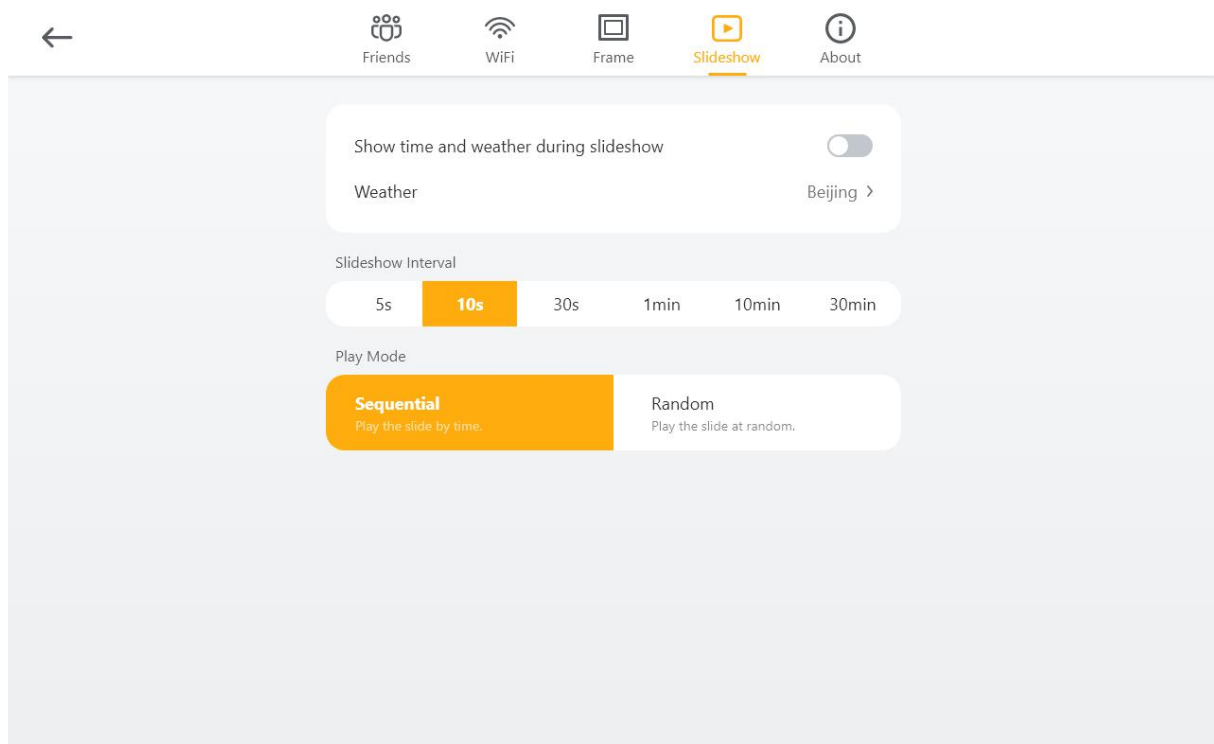
2.4.3. Select “Slideshow” tab.

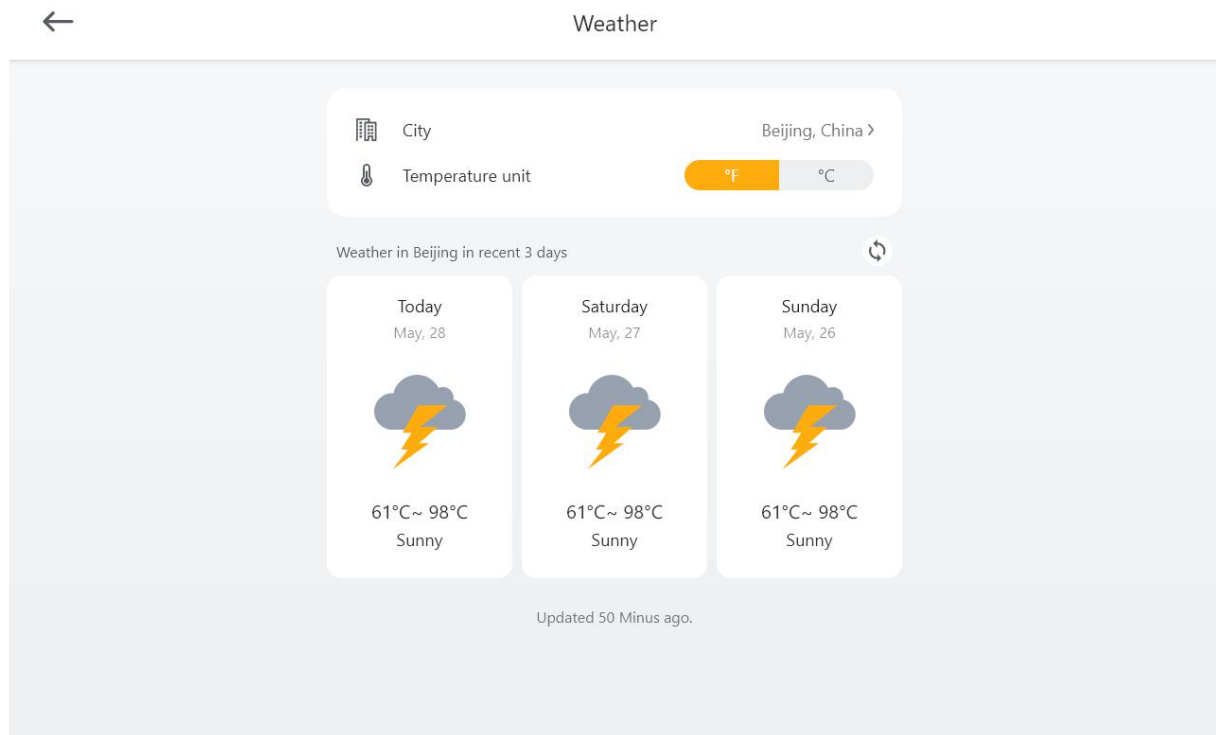


2.4.4. Set the main screen weather and time information display.

If you need to play photos to show weather and time information, please open "Showtime and weather During Slideshow".

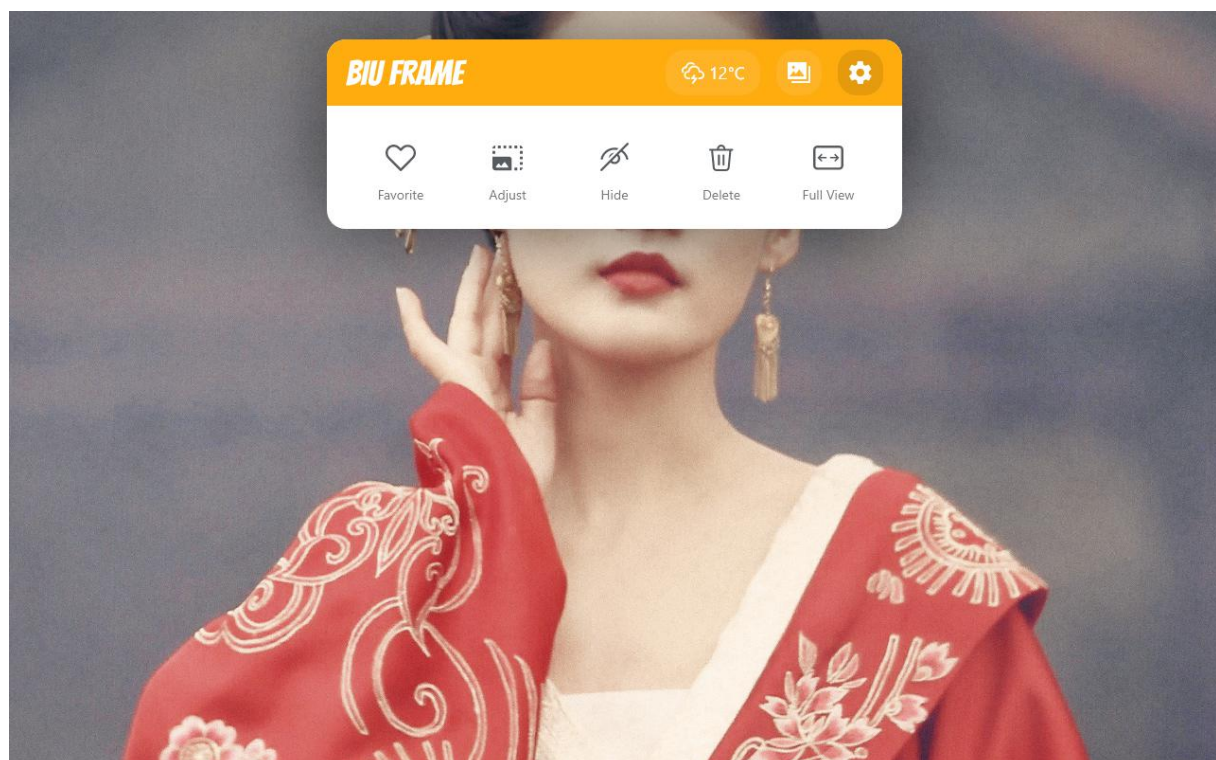
To adjust the currently displayed weather city, click "Weather".





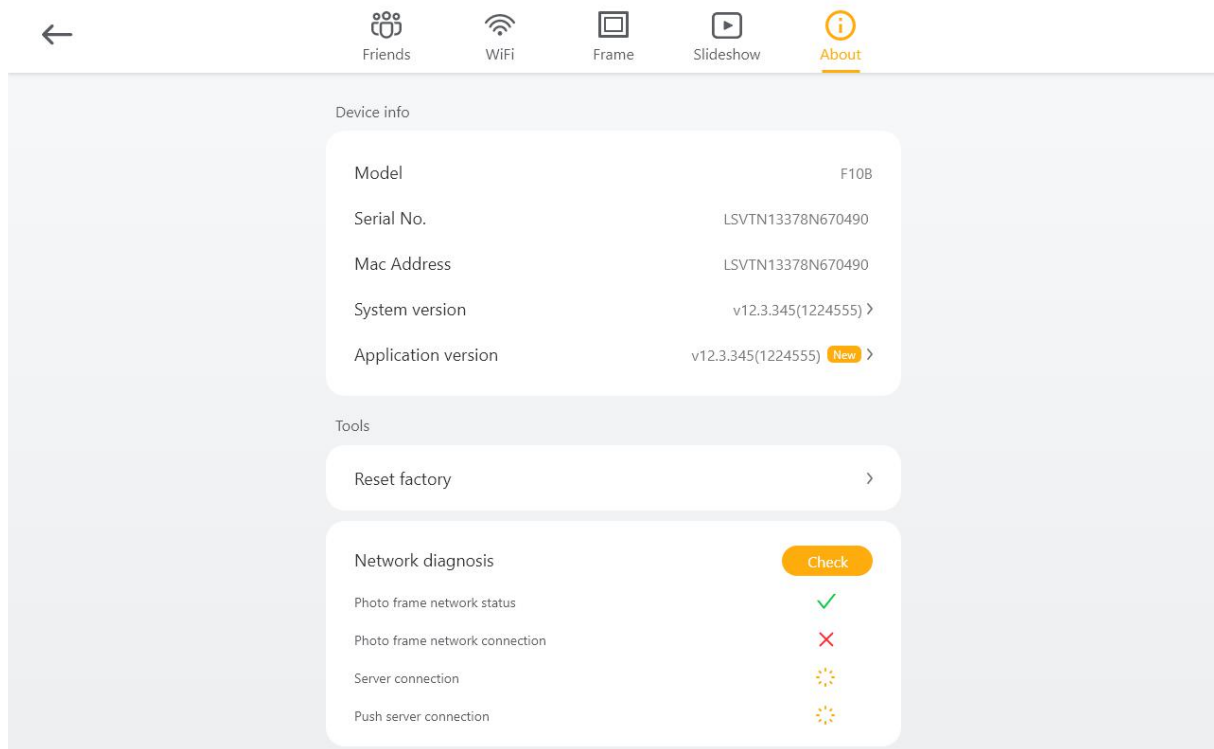
2.5. Reset factory

2.5.1. When playing a photo, click any area of the picture to display the operation panel.



2.5.2. Click settings button , enter settings page.

2.5.3. Select “About” tab.



2.5.4. Click “Reset factory” menu.

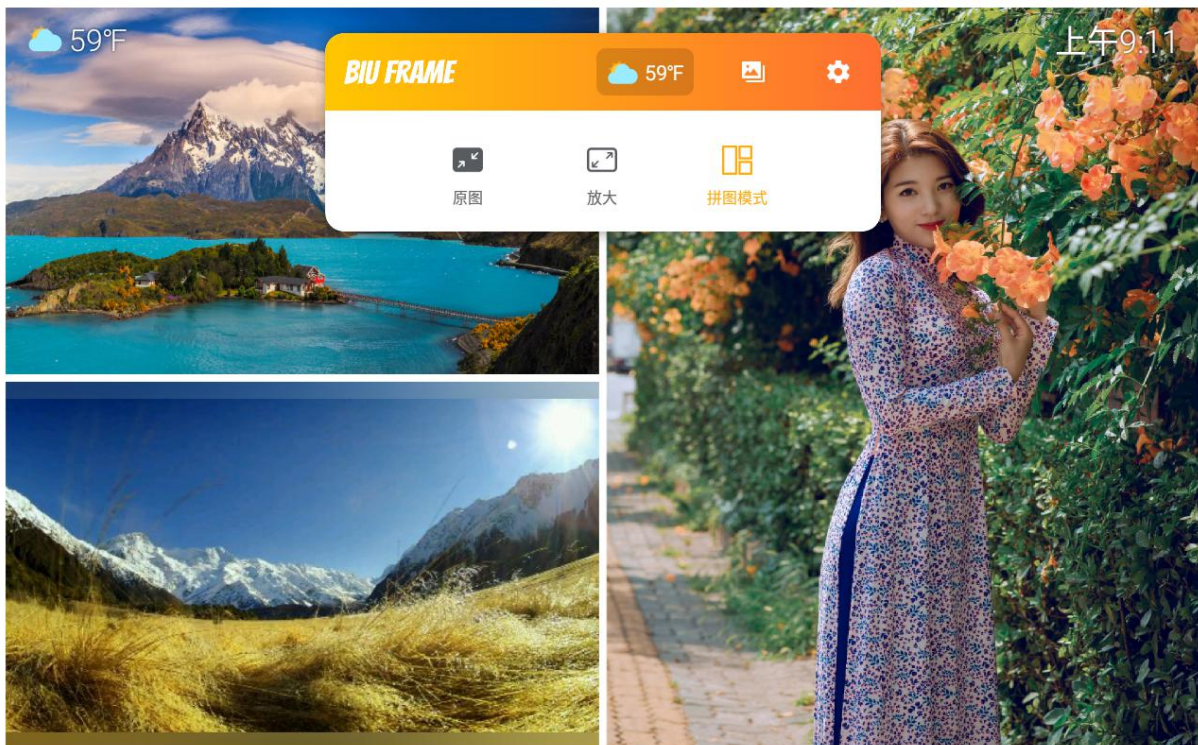
Note: After clicking, all personal information, all photos, videos and all settings on your device will be erased, and cannot be restored, please operate with caution.

BiuFrame X

1. BiuFrame X adds a puzzle function on the basis of BiuFrame

1.1 Play mode

Added puzzle play mode, as shown in the figure below, and other functions are consistent with BiuFrame.



FCC Warning:

This equipment has been tested and found to comply with the limits for a Class B digital device, pursuant

to part 15 of the FCC Rules. These limits are designed to provide reasonable protection against harmful interference in a residential installation. This equipment generates, uses and can radiate radio frequency energy and, if not installed and used in accordance with the instructions, may cause harmful interference to radio communications. However, there is no guarantee that interference will not occur in a particular installation. If this equipment does cause harmful interference to radio or television reception, which can be determined by turning the equipment off and on, the user is encouraged to try to correct the interference by one or more of the following measures:

- Reorient or relocate the receiving antenna.
- Increase the separation between the equipment and receiver.
- Connect the equipment into an outlet on a circuit different from that to which the receiver is connected.
- Consult the dealer or an experienced radio/TV technician for help.

Caution: Any changes or modifications to this device not explicitly approved by manufacturer could void your authority to operate this equipment.

This device complies with part 15 of the FCC Rules. Operation is subject to the following two conditions:

(1) This device may not cause harmful interference, and (2) this device must accept any interference received, including interference that may cause undesired operation.

This equipment complies with FCC radiation exposure limits set forth for an uncontrolled environment. This equipment should be installed and operated with minimum distance 20cm between the radiator and your body.