

AE106 802.11ac 2x2 5G CPE
Quick Start Guide

Thank you for buying this product. The following information aims to give you general information about product introduction, product overview and installation procedure and so on.

1. Introduction

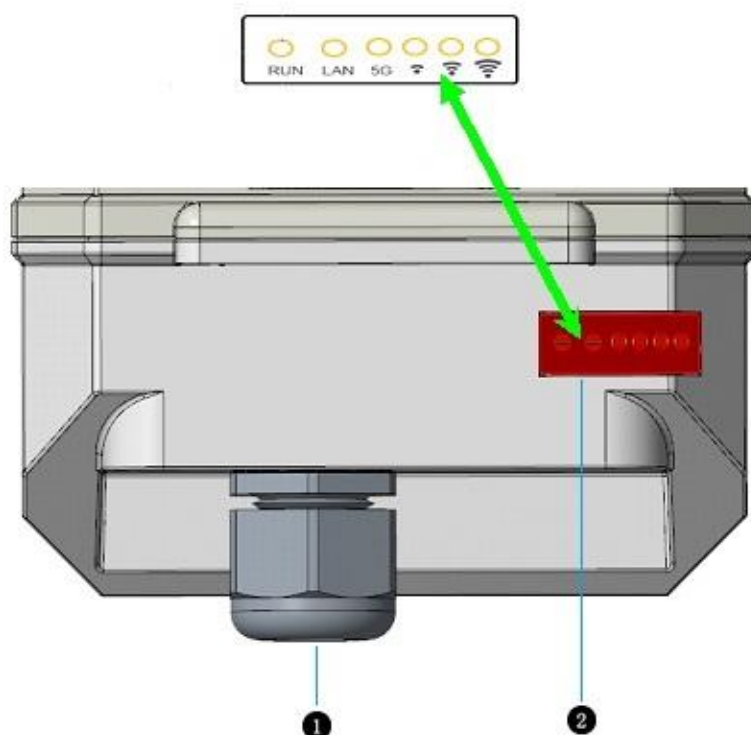
AE106 802.11ac 2x2 5G CPE is a 5G 2x2 outdoor Wi-Fi CPE, which is complied with the IEEE802.11ac standard and designed for high-speed wireless access.

Having together MIMO (Multiple-in&Multiple-out) technology with high-throughput mode techniques, AE106 802.11ac 2x2 5G CPE works with most wireless AP to builds a high capacity Wi-Fi network.

2. Package List

- AP x1
- Hose clampsx2
- Waterproof coverx1

3. Product Overview





No.	Name	Function
①	LAN Port	10/100/1000M Base-T Ethernet port (RJ-45), used as a WAN port and used for being powered by PoE function.

4. Installation

To reduce the risk of bodily injury, electrical shock, fire, and equipment damage, read all warnings and precautions in this guide before installing or maintaining product.

Caution

 To avoid risk of injury from electrical shock or energy hazard, installation and service of this product must be performed by qualified service personnel.

 Make sure the AP fits securely on the ceiling rail when hanging the device in the ceiling, because poor installation could cause it to fall and make body injury and equipment damage.

Safety Statement

- To avoid the abnormal work, do not install the device near the power line, electric lamp, power grid, or in any forceful power grid place
- Ensure the power adapter is grounded well if install the device indoor.
- Install other lightning protection equipment near the device if necessary, because the lightning protection module inside the device is basic.
- Use the steady power grid to provide the power to the device, which is to avoid the abnormal work.
- Use a less than 50m network cable to connect the PoE port, which is to acquire the steady power. The network cable complies with the DC resistance definition in the YD/926.2 protocol.

Installation Environment

- Operating ambient temperature: -40°C ~ +55°C
- Operating ambient humidity: 5% ~ 95%non-condensing

Installation mode:

- Pole mounting

Installation tool:

- Screws and screw-driver

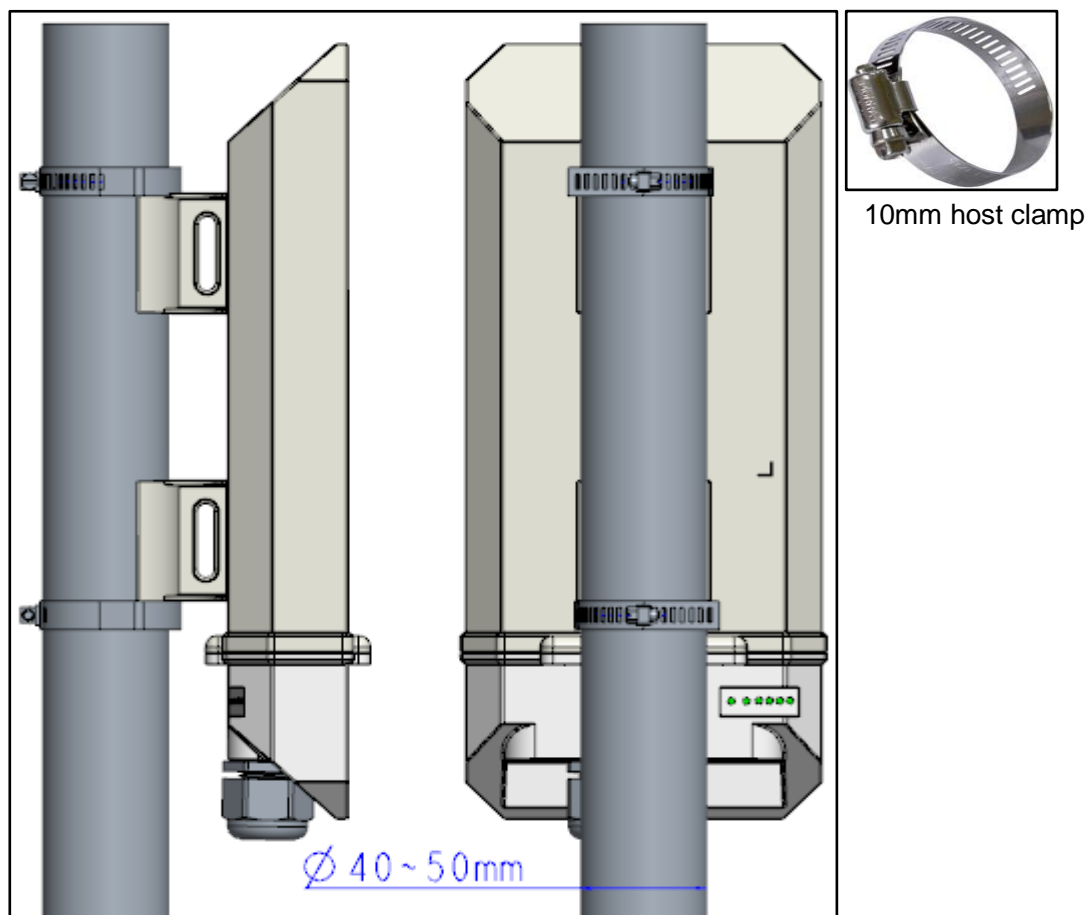
Installation site:

- Please ensure the visibility of product and no tall buildings and woods block between them.

Installation procedure

Pole mounting

Mount AE106 802.11ac 2x2 5G CPE on the pole with host clamp (10mm width). And then drive the screw tightly.



5. LED Definition

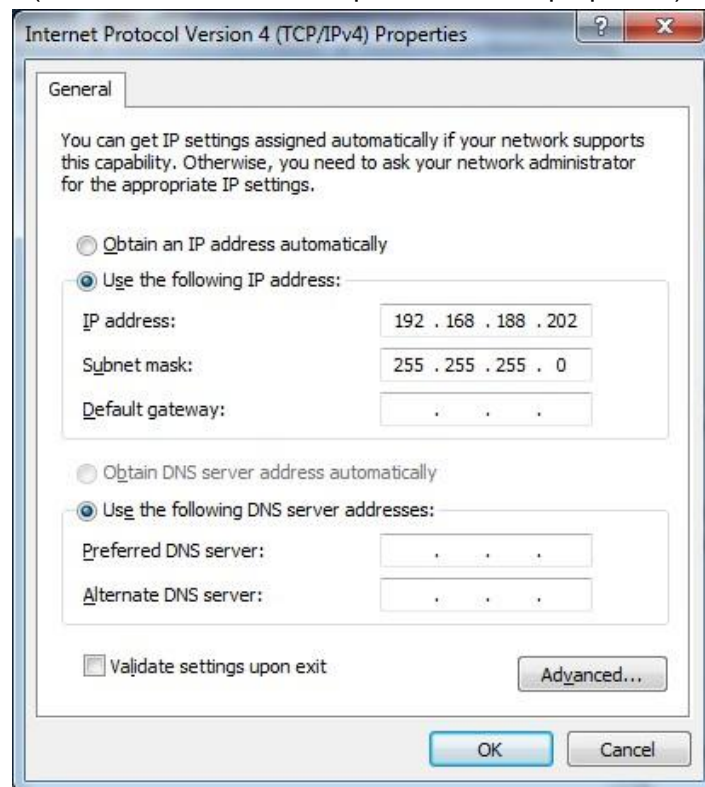
LED	Function	State-Color	Indication
RUN	AP power / ready status	Steady - Green	AP is ready
		Red	AP hardware failure
		Off	No power to AP
LAN	Network Link Status	Steady - Green	1000Mbps Ethernet link negotiated
		Steady- Yellow	10/100Mbps Ethernet link negotiated
		Flashing	Ethernet link activity
		Off	Ethernet link unavailable
5G	5G Hz Radio Status	Steady- Green	5GHz radio is enabled

		Off	5GHz radio is disabled
RSSI1	Radio Status	Steady– Green	Signal strength 1
		Off	
RSSI2	Radio Status	Steady– Green	Signal strength 2
		Off	
RSSI3	Radio Status	Steady– Green	Signal strength 3
		Off	

6. Software Installation

Logging in to the Web Page

1. To configure PC IP address, fill 192.168.188.x in “IP address” and 255.255.255.0 in “Subnet mask”(set Window7 as an example to show the properties)



2. Input the default IP address 192.168.188.251 in the address bar of the web browser and press Enter.
3. Enter username and password (username: admin, password: password), after password authentication is successful, the web page is displayed.

7. Product Specification

Physical specification

Dimensions	270 mm x 118 mm x 72.6mm x40mm(L x W x H x Bracket)
-------------------	---

Weight	2.5Kg
LED	RUN/ LAN / 5G/ Wireless signal strength1~3
Ethernet interface	RJ-45 connector

Electrical specification

Power input	Standard 802.3af PoE
Power consumption	≤9.3W

Environmental specification

Working temperature	-40°C ~ +55°C
Working humidity	5% ~ 95% non-condensing
Elevations	86kPa~106kPa
Dustproof and waterproof	IP67
Lightning protection	4KV common mode surge

8. Product Proper Disposal

Waste of Electrical and Electronic Equipment



Directive 2002/96/EC on Waste of Electrical and Electronic Equipment are designed to tackle the fast increasing waste stream of electrical and electronic equipment and complements European Union measures on landfill and incineration of waste. CIG products at end of life are subject to separate collection and treatment in the EU Member States and therefore are marked with the symbol.

European Union RoHS



EU Restriction and Hazardous Substances Directive 2011/65/EC (RoHS) restricts the use of specific hazardous materials in manufacture of electrical and electronic equipment. Specially, restricted materials are Lead, Cadmium, Mercury, Hexavalent Chromium, and Bromine. CIG products comply with this requirement and all marked with "RoHS" shown at the left.

China RoHS

AE106 802.11ac 2x2 5G CPE complies with China environmental declaration requirements and is labeled with "EFUP 20" label shown as follows.

有毒有害物质声明

Hazardous Materials Declaration

部件名称 (Parts)	有毒有害物质或元素 (Hazardous Substance)					
	铅 (Pb)	汞 (Hg)	镉 (Cd)	六价铬 (Cr6+)	多溴联苯 (PBB)	多溴二苯醚 (PBDE)
电路模块 (circuit modules)	x	○	○	○	○	○
电缆及电缆组件 (Mechanical assemblies)	x	○	○	○	○	○
金属部件 (Metal Parts)	○	○	○	○	○	○
塑料和聚合物部件 (Plastic and Polymeric Parts)	○	○	○	○	○	○

O:

表示该有毒有害物质在该部件所有均质材料中的含量在 SJ/T11363 — 2006标准规定的限量要求下。

Indicates that the concentration of the hazardous substance in all homogeneous materials in the parts is below the relevant threshold of the SJ/T11363-2006 standard.

X:

表示该有毒有害物质至少在该部件的某一均质材料中的含量超出SJ/T11363-2006标准规定的限量要求。

Indicates that the concentration of the hazardous substance of at least one of all homogeneous materials in the parts is above the relevant threshold of the SJ/T11363-2006 standard.

对销售之日的所售产品，本表显示剑桥公司供应链的电子信息产品可能包含这些物质。注意：在所售产品中可能会也可能不会含有所有所列的部件。

This table shows where these substances may be found in the supply chain of CIG electronic information products, as of the date of sale of the enclosed product. Note that some of the component types listed above may or may not be a part of the enclosed product.



除非另外特别的标注，此标志为针对所涉及产品的环保使用期标志。某些零部件会有一个不同的环保使用期贴在其产品上。此环保使用期限只适用于产品是在产品手册中规定的条件下工作。

The Environment-Friendly Use Period (EFUP) for all enclosed products and their parts are per the symbol shown here, unless otherwise marked. Certain parts may have a different EFUP and so are marked to reflect such. The Environment-Friendly Use Period is valid only when the product is operated under the conditions defined in the product manual.

9. Safety and Regulatory compliance

AE106 802.11ac 2x2 5G CPE has been tested and complied with the standards as follows:

- FCC DOC Part 15 Class B (US)
- FCC Part 15 Subpart C 15.247 (US)
- FCC Part 15 Subpart E 15.407 (US)

10. FAQs

FAQ	Solution
The RUN indicator is off	Check that the power adapter is plugged into a live AC outlet.
	Check the power cable for shorts or breaks.
	Check whether the connection between the LAN/POE port of the combiner and the LAN/POE port is correct.
The LAN port indicator is off.	Check whether the connection between the LAN/POE port of the combiner and the LAN/POE port is correct.

11. Technical Support

CIG offers technical support 24 hours a day, 7 days a week. Use one of the following methods to contact CIG technical assistance center:

Hotline: +86 21 8023 300

Email: support@cambridgeig.com

12. Contact Information

Hong Kong

25th Floor, Jar dine House, 1 Connaught Place

Hong Kong, PRC

Phone: +852 2827 1778

Shanghai

5F, 8Building

2388Chen Hang Road
Shanghai 201114, China
Phone: +86 21 8023 300

USA

Cambridge Industries Group
Techmart Center 5201 Great
AmericaParkway, Suite 320
Santa Clara CA 95054.
Tel: +1 408.730.6888

13. Legal declaration

CIG name, CIG logo, and all CIG product names are trademarks of Cambridge Industries Group Co. Ltd (CIG). All other brand and product names are claimed as property of others respective holders. Specifications, products, and products names are subject to change without notice. Copyright

This document may not be reproduced in whole or in part without the express written permission of CIG. This document contains confidential, proprietary information belonging to CIG, and may not be used or disclosed except in accordance with applicable agreements.

Performance figures and data quoted in this document are typical and must be specifically confirmed by CIG before they become applicable to any particular order or contract. The company reserves the right to make alterations or amendments to the detailed specification at its discretion.

Copyright© 2014, Cambridge Industries Group Co. Ltdconfidential, All rights reserved.

Federal Communications Commission (FCC) Interference Statement

This equipment has been tested and found to comply with the limits for a Class B digital device, pursuant to Part 15 of the FCC Rules.

These limits are designed to provide reasonable protection against harmful interference in a residential installation. This equipment generate, uses and can radiate radio frequency energy and, if not installed and used in accordance with the instructions, may cause harmful interference to radio communications. However, there is no guarantee that interference will not occur in a particular installation. If this equipment does cause harmful interference to radio or television reception, which can be determined by turning the equipment off and on, the user is encouraged to try to correct the interference by one of the following measures:

- Reorient or relocate the receiving antenna.
- Increase the separation between the equipment and receiver.
- Connect the equipment into an outlet on a circuit different from that to which the receiver is connected.
- Consult the dealer or an experienced radio/TV technician for help.

This device complies with Part 15 of the FCC Rules. Operation is subject to the following two conditions: (1) This device may not cause harmful interference, and (2) this device must accept any interference received, including interference that may cause undesired operation.

FCC Caution: Any changes or modifications not expressly approved by the party responsible for compliance could void the user's authority to operate this equipment.

RF exposure warning

This equipment complies with FCC radiation exposure limits set forth for an uncontrolled environment. This equipment must be installed and operated in accordance with provided instructions and the antenna(s) used for this transmitter must be installed to provide a separation distance of at least 66 cm from all persons and must not be collocated or operating in conjunction with any other antenna or transmitter.