

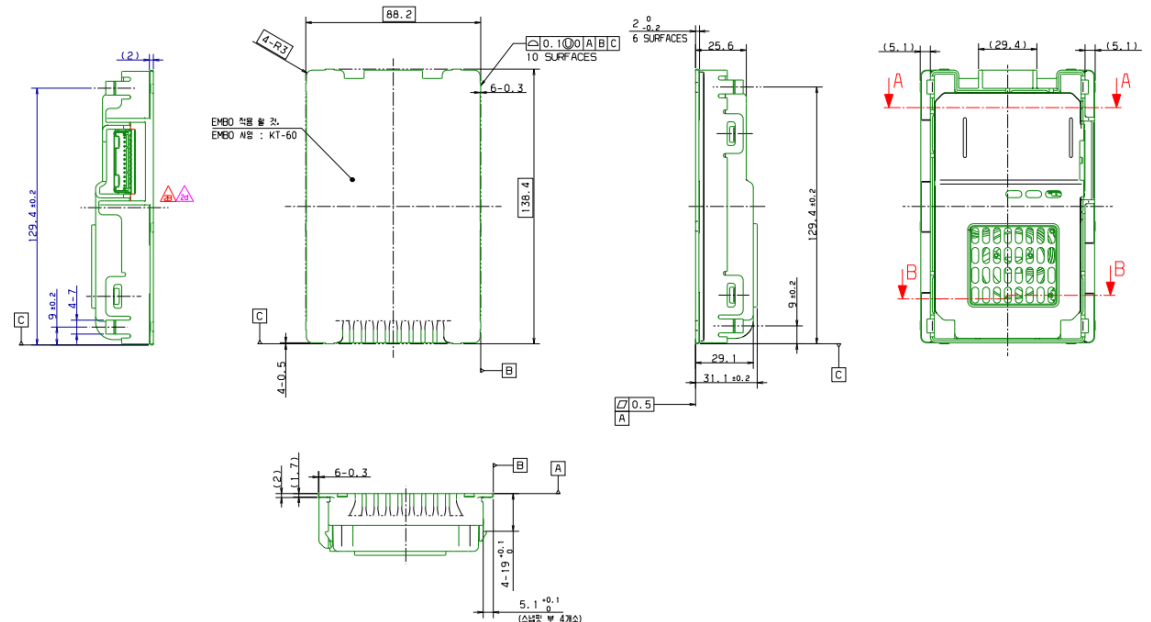


APPENDIX H

: USER'S MANUAL

Application

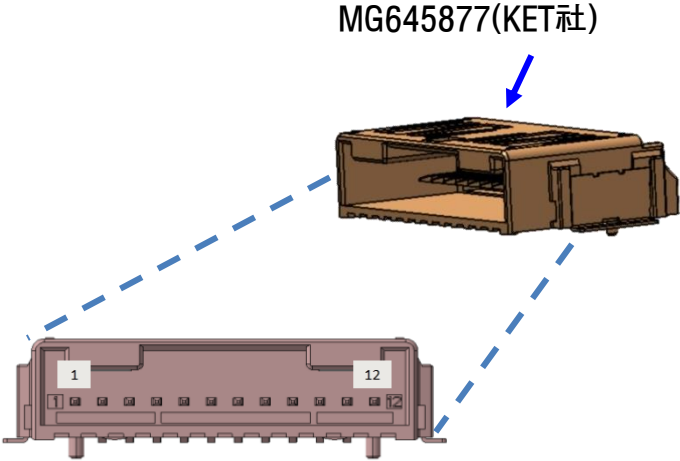
- A system that receives the battery voltage in the IGN ON state of the vehicle and drives the wireless charging system to transmit power to the target cellular phone with an output of Max 10W.
- Can be used with Qi certified internal mobile phone.



- Application method : Magnetic induction (Max 10W)
- Module size : 88.2mm x 138.4mm x 31.1mm
- Module weight (WC-MP01/WC-MP01N) : 228.5g/228.2g
- MP-A13 Standard coil

User manual

➤ Wireless charging module Main Connector



No.	Signal name	Remarks
1	GND_POWER	
2		
3		
4		
5		
6		
7		
8		
9		
10		
11	IG1	
12	Battery	

User manual

➤ Single Item Wireless Charging Module Operating Conditions

- 1) Power line connection : No.11,12 Pin(12V), No.1 Pin(GND)
- 2) Power supply
- 3) If you put a wireless rechargeable mobile phone on top of the charger

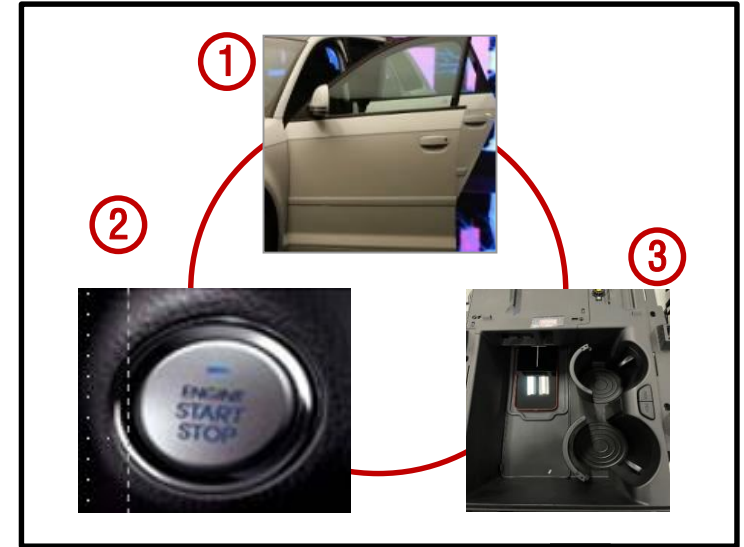
➤ Actual car wireless charging module operating condition

■ How it works

1. Close all doors of the vehicle
2. Switch the vehicle's power to IG1 or higher
3. Put a wireless rechargeable cell phone on the tray

■ Development and Results

1. During normal charge operation
→ Amber LED on indicator is displayed.
2. At full charge 100%
→ BLUE LED on indicator is displayed.
[BLUE LED does not display depending on the type of mobile phone]
3. In case of internal problem
→ Amber LED on the indicator Flashes at 1 second intervals.



Compliance Statement

Regulatory Compliance

IMPORTANT NOTE: FCC Compliance statement

This device complies with part 15 & 18 of the FCC Rules.

OPERATION IS SUBJECT TO THE FOLLOWING TWO CONDITIONS:

- (1) This device may not cause harmful interference, and
- (2) This device must accept any interference received, including interference that may cause undesired operation..

IMPORTANT NOTE: FCC RF exposure statement

This equipment complies with FCC radiation exposure limits set forth for an uncontrolled environment. This transmitter must not be co-located or operating in conjunction with any other antenna or transmitter.

This equipment should be installed and operated with a minimum distance of 20 cm (7.8 inches) between the antenna and your body.

Users must follow the specific operating instructions for satisfying RF exposure compliance.

Industry Canada

This device complies with RSS-216 of the Industry Canada Rules. Operation is subject to the following two conditions:

(1) This device may not cause harmful interference, and (2) this device must accept any interference received, including interference that may cause undesired operation.

Ce dispositif est conforme à la norme CNR-216 d'Industrie Canada applicable aux appareils radio exempts de licence. Son fonctionnement est sujet aux deux conditions suivantes: (1) le dispositif ne doit pas produire de brouillage préjudiciable, et (2) ce dispositif doit accepter tout brouillage reçu, y compris un brouillage susceptible de provoquer un fonctionnement indésirable.

IMPORTANT NOTE: (For mobile device use)

Radiation Exposure Statement : This equipment complies with IC radiation exposure limits set forth for an uncontrolled environment. This equipment should be installed and operated with minimum distance 20cm between the radiator & your body.

NOTE IMPORTANTE: (Pour l'utilisation de dispositifs mobiles)

Déclaration d'exposition aux radiations : Cet équipement est conforme aux limites d'exposition aux rayonnements IC établies pour un environnement non contrôlé. Cet équipement doit être installé et utilisé avec un minimum de 20 cm de distance entre la source de rayonnement et votre corps.

User's Caution Statement

Any changes or modifications to the equipment not expressly approved by the party responsible for compliance could void user's authority to operate the equipment.

Toute modification ou modifications non expressément approuvées par la partie responsable de la conformité pourraient annuler l'utilisateur's autorité de faire fonctionner cet équipement.