

Safety and Compliance Information

WARNING:

Changers or modifications to this unit not expressly approved by the party responsible for compliance could void the user's authority to operate the equipment.

NOTE:

This equipment has been tested and found to comply with the limits for a Class A digital device, pursuant to part 15 of the FCC Rules. These limits are designed to provide reasonable protection against harmful interference when the equipment is operated in a commercial environment. This equipment generates, uses, and can radiate radio frequency energy and, if not installed and used in accordance with the instruction manual, may cause harmful interference to radio communications. Operation of this equipment in a residential area is likely to cause harmful interference in which case the user will be required to correct the interference at his own expense.

However, there is no guarantee that interference will not occur in a particular installation. If this equipment does cause harmful interference to radio or television reception, which can be determined by turning the equipment off and on, the user is encouraged to try to correct the interference by one or more of the following measures:

- Reorient or relocate the receiving antenna.
- Increase the separation between the equipment and receiver.
- Connect the equipment into an outlet on a circuit different from that to which the receiver is connected.
- Consult the dealer or an experienced radio/panel PC technician for help.

This device complies with Part 15 of the FCC Rules. Operation is subject to the following two conditions:

- (1) this device may not cause harmful interference, and
- (2) this device must accept any interference received, including interference that may cause undesired operation.



Correct Disposal of this product. This marking indicates that this product should not be disposed with other household wastes throughout the EU. To prevent possible harm to the environment or human health from uncontrolled waste disposal, recycle it responsibly to promote the sustainable reuse of material resources. To return your used device, please use the return and collection systems or contact the retailer where the product was purchased. They can take this product for environmental safe recycling.

"FCC & CE RF Radiation Exposure Statement Caution: To maintain compliance with the FCC & CE's RF exposure guidelines, place the product at least 20cm from near by persons."

This device contains licence-exempt transmitter(s)/receiver(s) that comply with Innovation, Science and Economic Development Canada's licence-exempt

RSS(s). Operation is subject to the following two conditions:

1. This device may not cause interference.
2. This device must accept any interference, including interference that may cause undesired operation of the device.

[[INDOOR Mobile Radio]]

To comply with FCC/IC RF exposure limits for general population / uncontrolled exposure, the antenna(s) used for this transmitter must be installed to provide a separation distance of at least 20 cm from all persons and must not be co-located or operating in conjunction with any other antenna or transmitter. For products available in the USA/Canada market, only channel 1~11 can be operated. Selection of other channels is not possible.

For LE-LAN devices

- i. the device for operation in the band 5150~5250 MHz is only for indoor use to reduce the potential for harmful interference to co-channel mobile satellite systems;
- ii. the maximum antenna gain permitted for devices in the bands 5250-5350 MHz and 5470-5725 MHz shall be such that the equipment still complies with the e.i.r.p. limit;

L'émetteur/récepteur exempt de licence contenu dans le présent appareil est conforme aux CNR d'Innovation, Sciences et Développement économique Canada applicables aux appareils radio exempts de licence. L'exploitation est autorisée aux deux conditions suivantes :

1. L'appareil ne doit pas produire de brouillage;
2. L'appareil doit accepter tout brouillage radioélectrique subi, même si le brouillage est susceptible d'en compromettre le fonctionnement.

Ce produit sont conformes aux limites ISED d'exposition aux rayonnements définies pour un environnement non contrôlé.

Cet appareil et son antenne (s) ne doit pas être co-localisés ou fonctionner en association avec une autre antenne ou transmetteur.

Ce produit doivent être installés et utilisés avec distance minimum de 20 cm entre le radiateur et votre corps.

Pour les produits disponibles aux États-Unis / Canada du marché, seul le canal 1 à 11 peuvent être exploités. Sélection d'autres canaux n'est pas possible.

Pour les appareils LE-LAN

- i. les dispositifs fonctionnant dans la bande de 5 150 à 5 250 MHz sont réservés uniquement pour une utilisation à l'intérieur afin de réduire les risques de brouillage préjudiciable aux systèmes de satellites mobiles utilisant les mêmes canaux;
- ii. le gain maximal d'antenne permis pour les dispositifs utilisant les bandes de 5 250 à 5 350 MHz et de 5 470 à 5 725 MHz doit être conforme à la limite de la p.i.r.e;

Declaration of Conformity

This device complies with the requirements set out in the Council Directive on the Approximation of the Laws of the Member States relating to Electromagnetic Compatibility (2014/30/EU), Low-voltage Directive (2014/35/EU), ErP Directive (2009/125/EC), RoHS directive (2011/65/EU) and Radio Equipment Directive (2014/53/EU).

This product has been tested and found to comply with the harmonized standards for Information Technology Equipment, these harmonized standards published under Directives of Official Journal of the European Union.

Warning: When a peripheral device is connected to a PC USB-C port and triggers a 20Vdc output voltage, this peripheral device requires a fireproof enclosure

Qbic is not responsible for damage arising from failure to damage caused by the use of a third-party component or product that does not meet the Product's specifications.



CAUTION
Risk of explosion if the battery is replaced by an incorrect type. Wait one-half hour after switching off before handling parts.
Risque d'explosion si la batterie est remplacée par un type incorrect. Attendre une demi-heure après l'arrêt avant de manipuler les pièces.

Power Adapter information:

Model: YW180A2-2100858

Input: 100-240V ~ 2.5A 50-60Hz

Output: 21V --- 8.58A

NOTE: Operating Temperature: 0~40°C

Qbic Technology Co., Ltd.

26F-12, No 99, Sec. 1, Xintai 5th Rd., Xizhi Dist., New Taipei City 22175, Taiwan (R.O.C)

Tel: 886-2-2697-2000 / FAX: 886-2-2697-2868

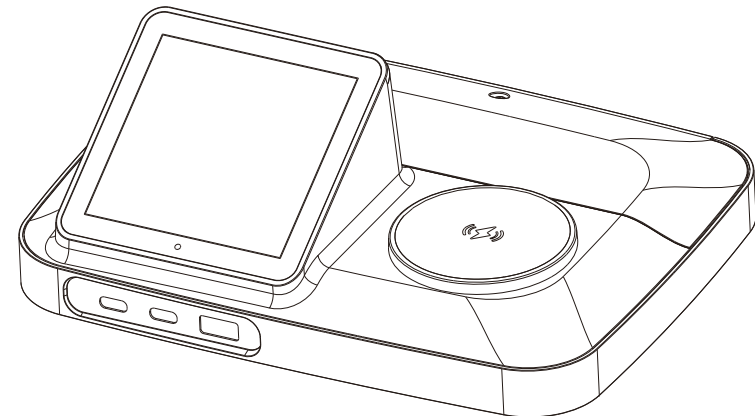


QTD08001ENQ02

Quick Start Guide

This quick guide will help you complete the installation quickly

TDD-1000-C Scheduler Docking Station



Support site



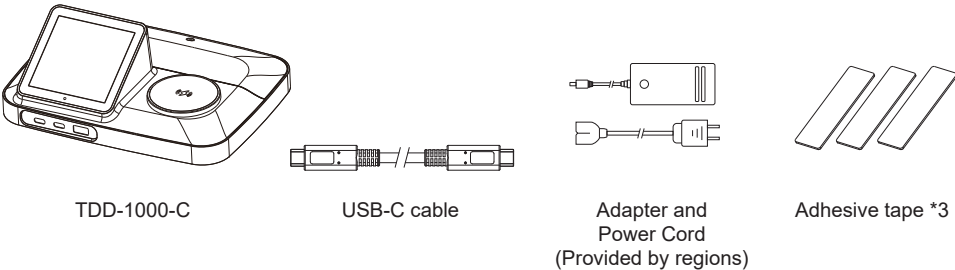
QSG download link

Actual produce color may vary.

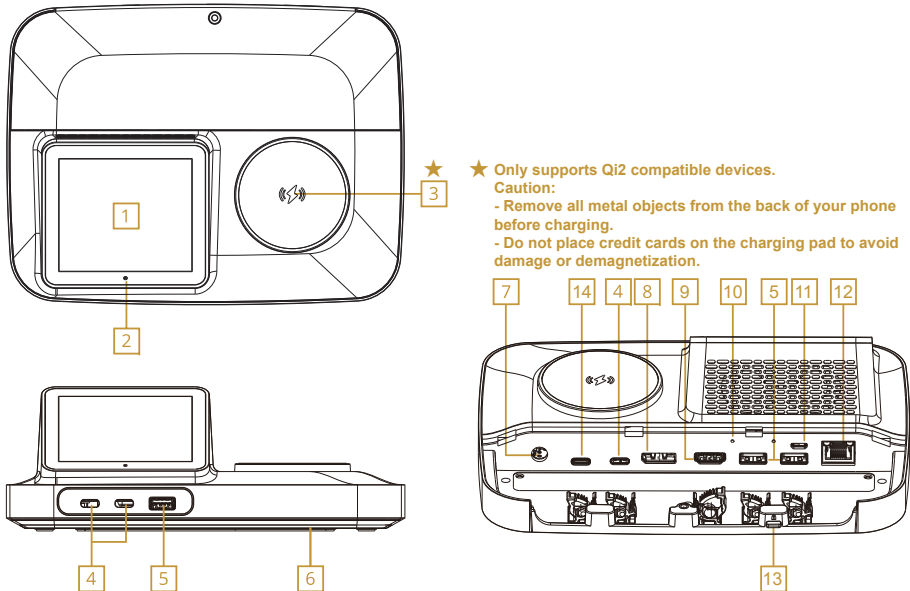
The specifications are subject to change without prior notification to improve the performance.



Contents



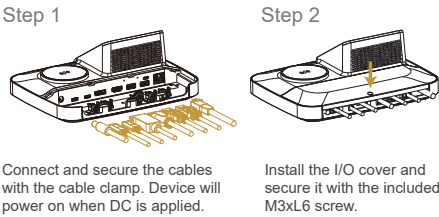
Port Reference



- | | | | |
|--------------------------------------|------------------|----------------------|-----------------------------------|
| 1 Touch Display | 5 USB-A(5V/1.5A) | 9 HDMI | 13 Kensington Lock Slot |
| 2 Sensor | 6 LED indicator | 10 Reset | 14 USB-C Upstream 60W MAX(20V/3A) |
| 3 Wireless Charger
15W (9V/1.67A) | 7 DC 21V | 11 Micro USB for ADB | |
| 4 USB-C(5V/1.5A) | 8 Display Port | 12 RJ45 | |

Installation

Free-Standing Mount



Adhesive Mount

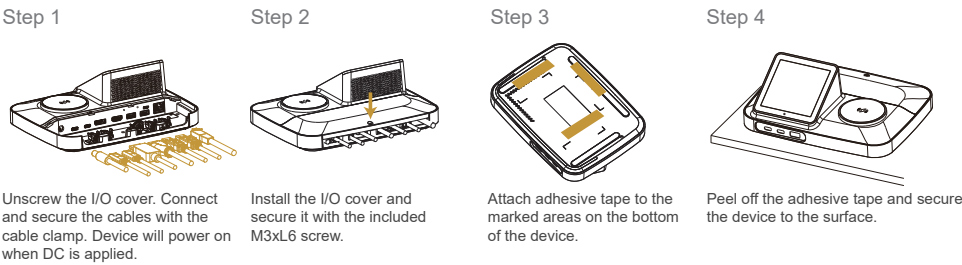
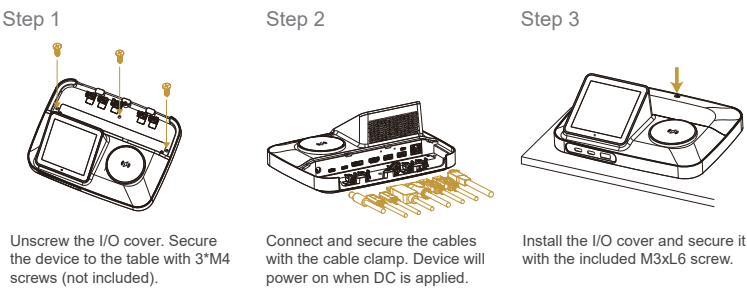


Table Mount



Cable Clamp

