

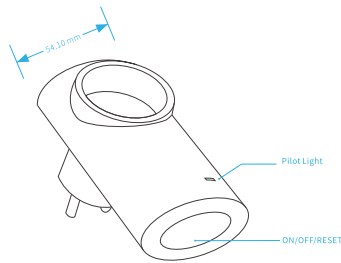
Wuneng S2  
Wi-Fi Smart Socket

INSTRUCTIONS

GALAXYWIND

PRODUCT PROFILE

Wuneng S2 series Wi-Fi smart sockets is a socket that you could remote control and manage the power by your phone through Wi-Fi, such as power management, power monitor, timer. It may provide you a healthy and convenient life.



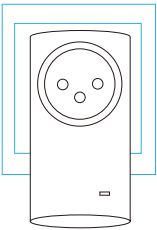
**Configuration:** Quick flashing red and green  
**Connected & Power On:** Red is on  
**Connected & Power Off:** Slow flashing red

Size: L=54.10mm, W=38.6mm, H=100.5mm

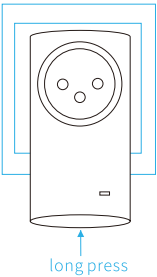
**Attentions:**  
Please use the socket in dry circumstance. Do not set working power more than 2.3KW. Working current can not exceed 10A.

THE INSTALLATION

1. Plug the smart socket into a fixed outlet



2. Press the ON/OFF/RESET button till the pilot light turn to quick flashing red and green



SCAN QR CODE TO  
DOWNLOAD THE APP

Support Android, IOS

Available on the  
App Store



ANDROID APP ON  
Google play

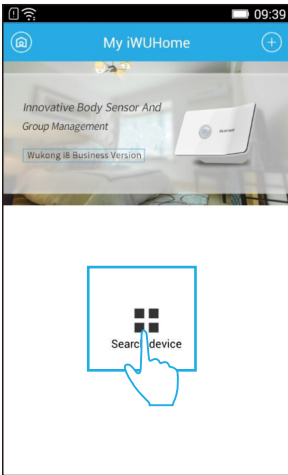


You may also search 'iWUHome' in APP STORE or GOOGLE PLAY to download the app.

CONNECT TO  
THE NETWORKS

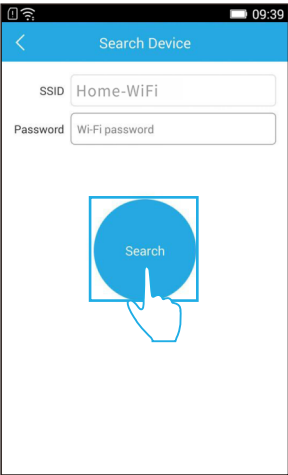
a. Add a new device

Connect your smart phone with Wi-Fi. Open the App and click the add button. Choose 'New Device'



b. Wi-Fi configuration

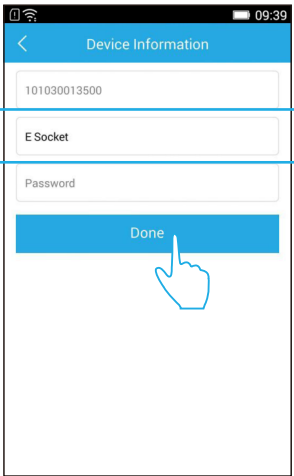
Please enter Wi-Fi password, and click the search button



When the red light is on, the smart socket is connected with network successfully. If the red light is quick flashing, please check your network and password.

c. Name your device

Input the name of your device and default password '123456'

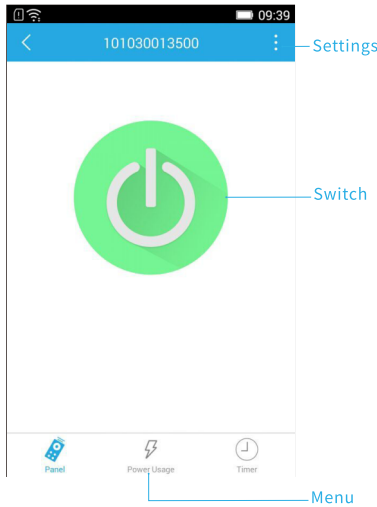


\*The screenshots are for reference. The interface may be different due to software update.

FUNCTIONS

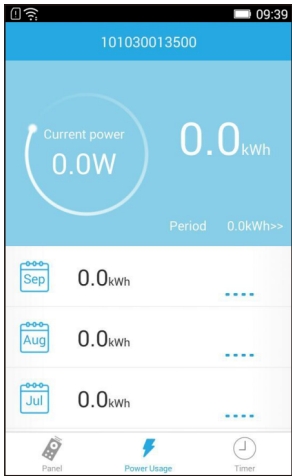
a. Switch panel

When the switch turns green, the socket is on.  
When the switch turns red, the socket is off.



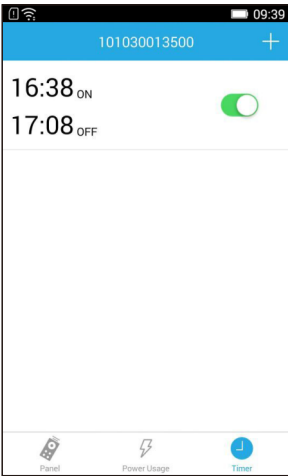
b. Power management

Read daily, monthly power report on your phone. You may set the special configurations in 'System Settings'



c. Timer

It supports timing switch on/off, setting working period and cycle timing.



FAQ

1. The cause of Wi-Fi configuration failure.

a. Please kindly check if the pilot light flashes in red.  
b. Please kindly check if the network status of wirelessrouter is normal, the password of WIFI is correct.  
c. Please make sure the mobile frequency is 2.4G.

2. If the WiFi password of wireless router or the name of WiFi changes.

A: Please reset to factory configuration, then input the new password of WiFi.

3. How to reset to factory configuration of the smart socket?

A: Under the status of power-on, long press the reset button of the smart socket till the pilot light is in red flash.

4. Is there a one-to-one correspondence between the APP "iWUHome" and smart socket?

A: It can control multi devices in APP "iWUHome", one smart socket can be controlled by different persons.

5. How to modify the password of the smart socket?

A: After opening the APP "iWUHome", please use your finger to slide the name of the socket to the left, and then choose to edit and modify the password.

6. How to modify the name of the smart socket?

A: After opening the APP "iWUHome", please use your finger to slide the name of the socket to the left, and then choose the edit and modify the name.

7. How to view the device information of the smart socket?

A: In the control panel of the smart socket, please click

the 'Settings' in the top right corner, then choose the 'System Setting' and 'Device Information'.

8. What is the maximum number of timers could be set for the smart socket?

A: Maximum 20 timers could be set on the smart socket by the App "iWUHome".

9. How to add the smart socket you configured into the other people's APP "Iwuhome"?

A: Option 1, The APP may automatically scan the configured smart socket in LAN.

Option 2, please click "+" on the App homepage, and choose the configured device.

**FCC Caution:**

Any Changes or modifications not expressly approved by the party responsible for compliance could void the user's authority to operate the equipment.  
This device complies with part 15 of the FCC Rules. Operation is subject to the following two conditions: (1) This device may not cause harmful interference, and (2) this device must accept any interference received, including interference that may cause undesired operation.

**FCC Radiation Exposure Statement:**

This equipment complies with FCC radiation exposure limits set forth for an uncontrolled environment. This equipment should be installed and operated with minimum distance 20cm between the radiator & your body.  
This transmitter must not be co-located or operating in conjunction with any other antenna or transmitter.

\*Copyright 2015 GALAXYWIND Network Systems Co., Ltd.  
All rights reserved