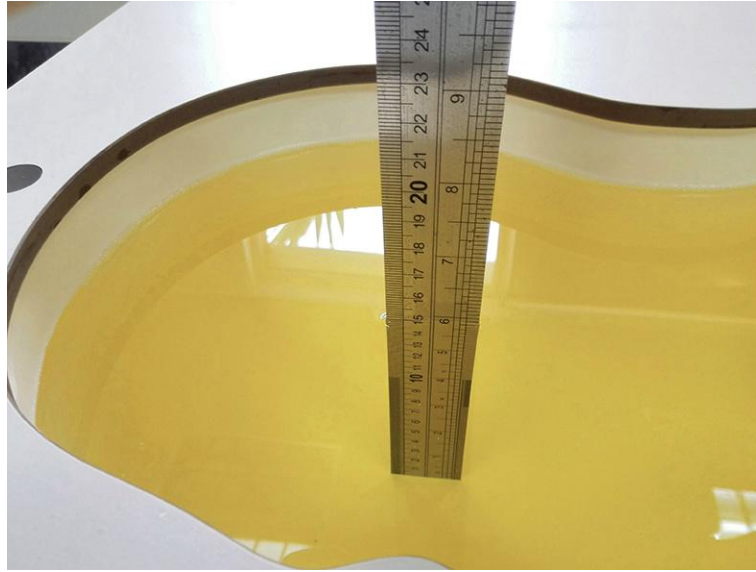
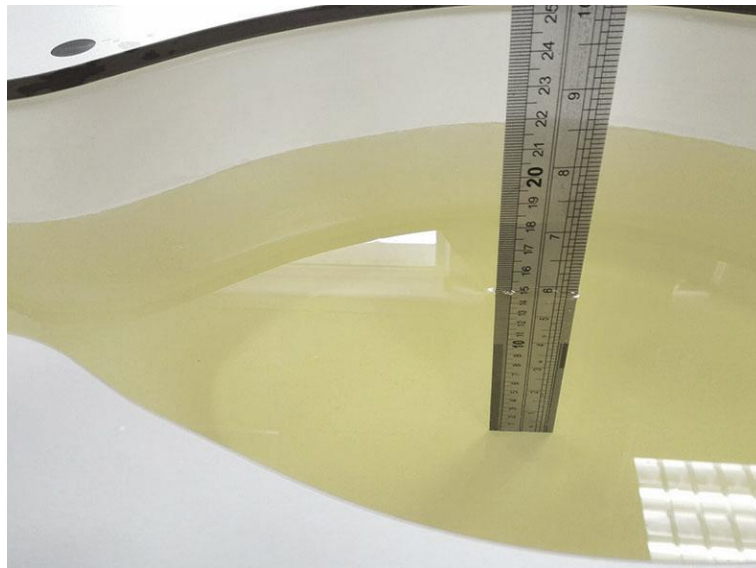


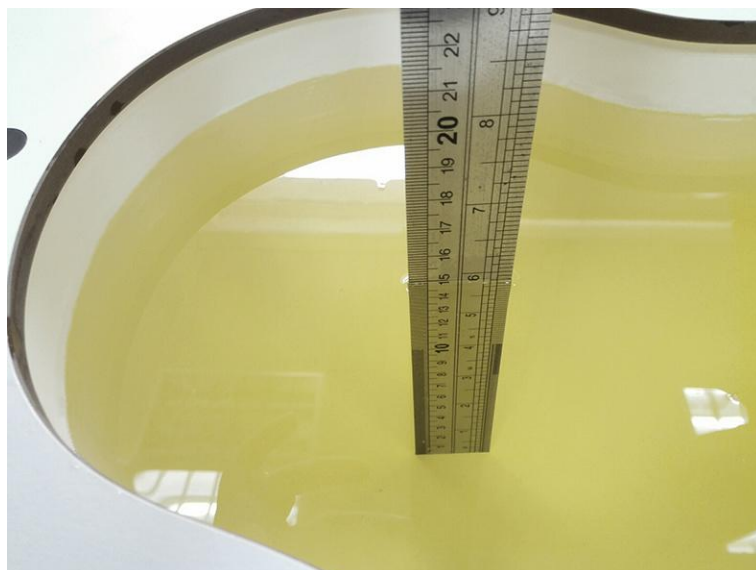
7. Test Setup Photos



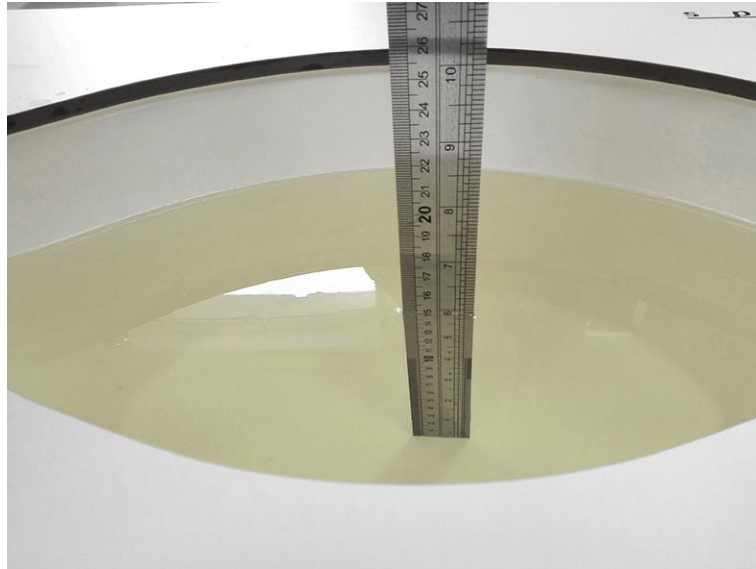
Photograph of the depth in the Head Phantom (850MHz)



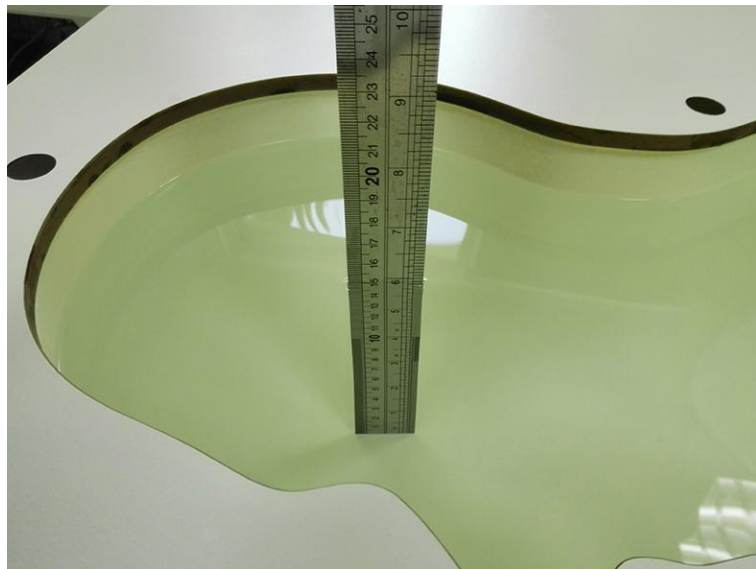
Photograph of the depth in the Body Phantom (850MHz)



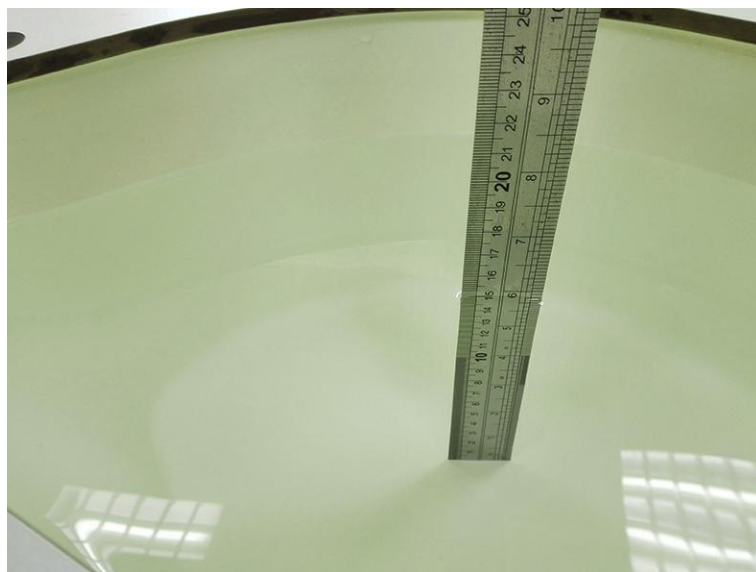
Photograph of the depth in the Head Phantom (1900MHz)



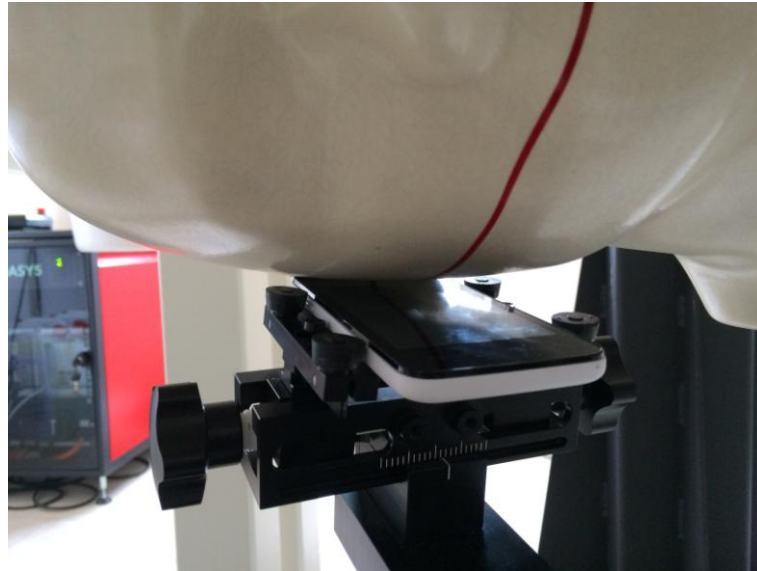
Photograph of the depth in the Body Phantom (1900MHz)



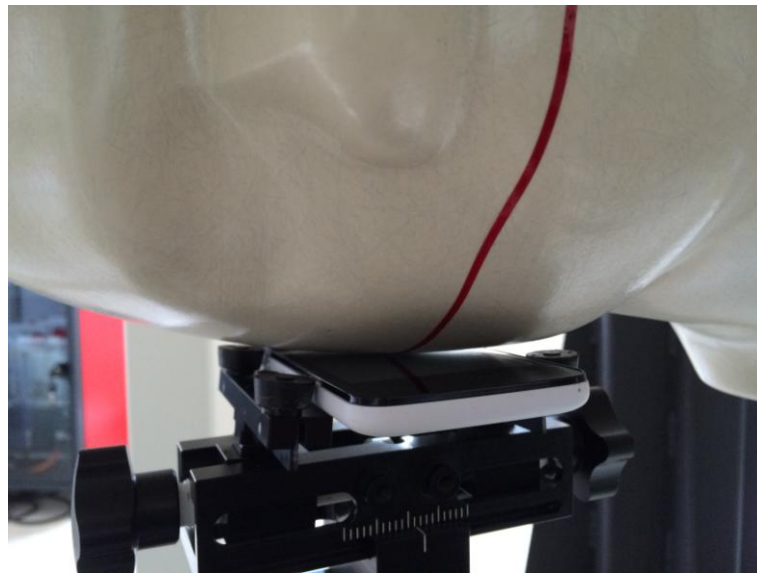
Photograph of the depth in the Head Phantom (2450MHz)



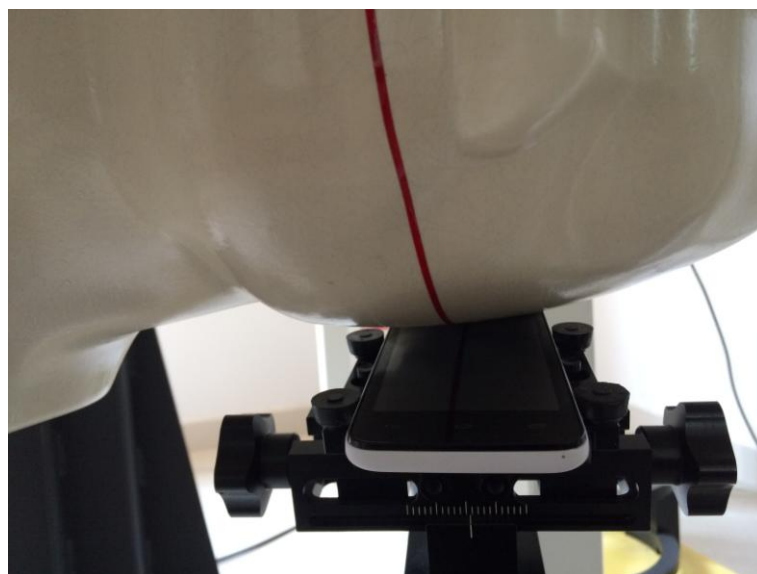
Photograph of the depth in the Body Phantom (2450MHz)



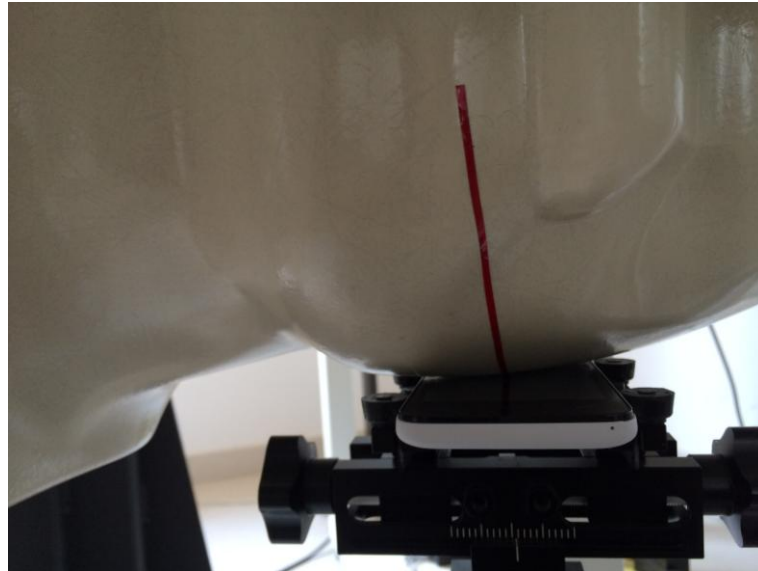
Right Head Tilt Setup Photo



Right Head Cheek Setup Photo



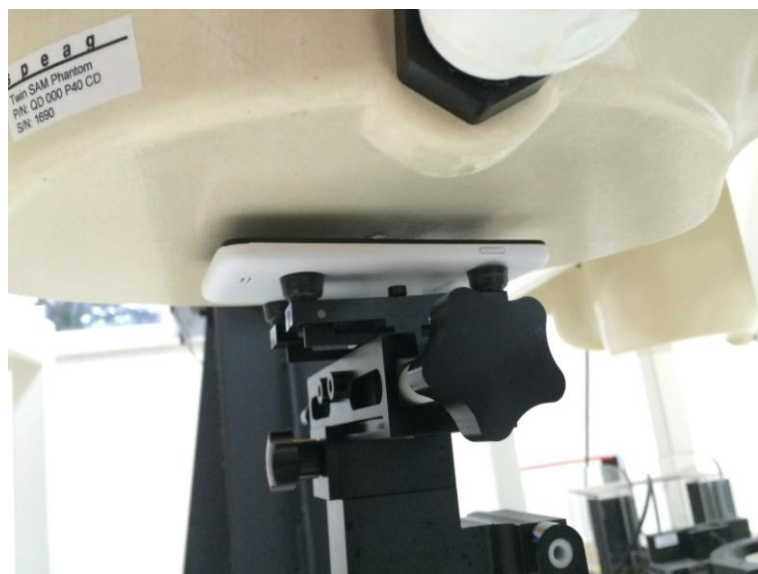
Left Head Tilt Setup Photo



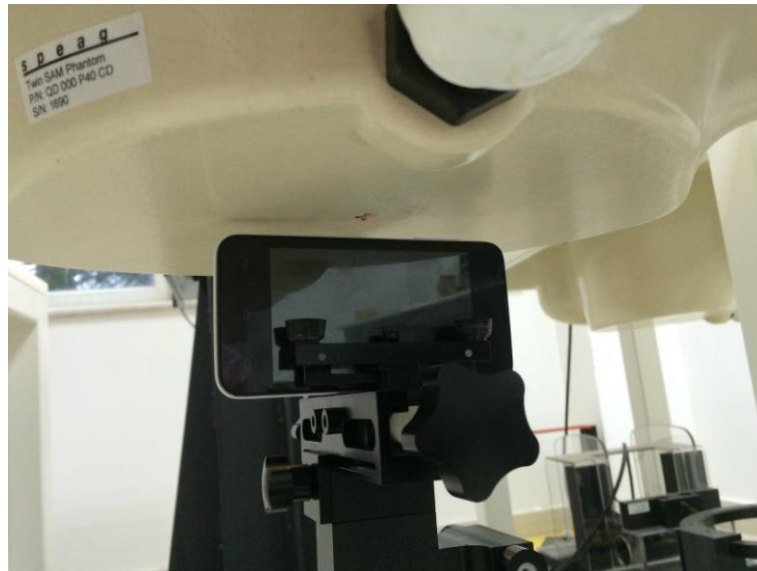
Left Head Cheek Setup Photo



10mm Body-worn Rear Side Setup Photo



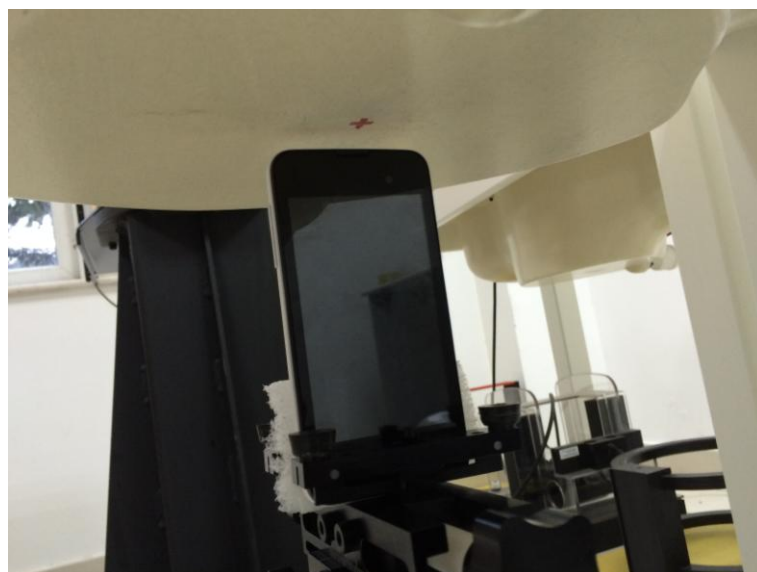
10mm Body-worn Front Side Setup Photo



10mm Body-worn Left Side Setup Photo



10mm Body-worn Right Side Setup Photo



10mm Body-worn Top Side Setup Photo

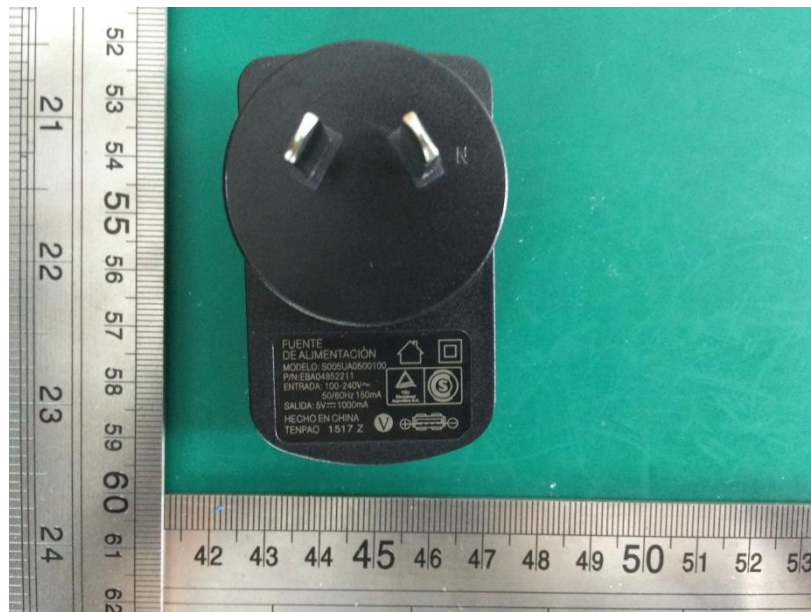


10mm Body-worn Bottom Side Setup Photo

8. External Photos of the EUT







.....End of Report.....