

MODEL PAS



Proximity Alert System



MANUAL: 004-0352-001-A

Rev: 1



TABLE OF CONTENTS

1. WARRANTY	3
2. INTRODUCTION	3
3. INSTALLATION	5
VEHICLE INSTALLATION	5
PAS CONTROLLER SETUP	5
<i>Units</i>	6
<i>Volume</i>	7
<i>Vehicle Dimensions</i>	7
<i>Sensor Locations</i>	8
<i>Zones</i>	8
<i>Audible Alerts</i>	9
<i>Visual Alerts</i>	10
<i>Linked Tags</i>	10
<i>PAS Display Setup</i>	11
<i>Geofences</i>	12
<i>Compass</i>	15
<i>System</i>	16
<i>Detection</i>	16
<i>Relay Outputs</i>	17
<i>Passcode</i>	17
<i>About</i>	18
4. OPERATION	19
SWITCHING ON	19
DISCLAIMER	19
EQUIPMENT DETECTION	19
USING THE CONTROLLER PAS SCREEN	20
<i>PAS Screen Area Coverage</i>	20
<i>Zoomed-out Coverage View</i>	20
<i>Zoomed-in Coverage View</i>	22
<i>Urgent Alarm</i>	22
<i>Caution Alarm</i>	23
<i>Geofence Alarm</i>	23
VIDEO	23
VEHICLE OCCUPANTS	24
NOTIFICATIONS.....	24
OTHER FEATURES	24
<i>Event Log</i>	24
MAINTENANCE	24

Copyright © 2014 PBE Inc. All rights reserved. No section or element of this document may be removed from this document, reproduced, electronically stored or transmitted in any form without the written permission of PBE. The information contained in this document produced by PBE, is solely for the use of the client(s) for the purpose for which it has been prepared and PBE undertakes no duty to, nor accepts any responsibility to, any third party who may rely upon this information contained in this document.



1. WARRANTY

The Proximity Alert System has a 12 month warranty period on all components. This warranty covers any defects which prove to be in materials and/or workmanship. This warranty shall be considered void on any unit which has been subjected to misuse, neglect, or accident or used in violation of instructions. Modifications of this unit will void any and all warranty, implied, expressed or written. Any defect should be brought to the attention of PBE, whereupon arrangements will be made to repair or replace the unit at the discretion of PBE.

2. INTRODUCTION

PBE's Proximity Alert System (PAS) is designed to enhance workplace safety by reducing risk of collision through asset and personnel detection and warning. The system incorporates overlapping detection technologies (RFID, GPS, Electromagnetic sensors, and (optional) real-time video surveillance) for redundancy and safety to detect user defined Heavy Vehicles, Light Vehicles, Personnel and Obstacles.

PBE's PAS provides the driver with greater situational awareness which leads to increased safety and comfort.

The system can be easily integrated into PBE's tracking system with MineBoss™ compatible tags and can provide monitoring and reporting.

The Proximity Alert System comprises several major components (see Figure 1).

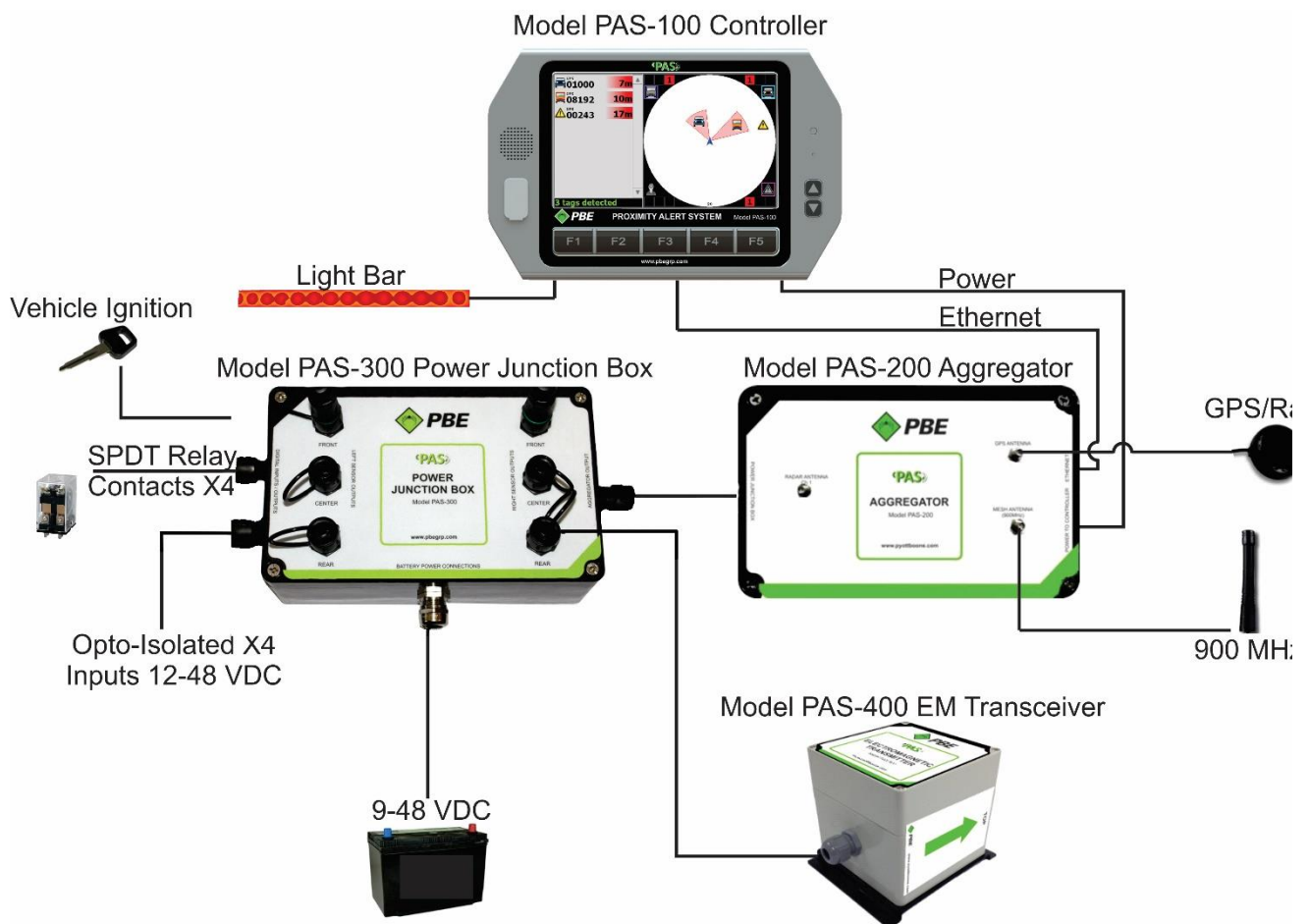


Figure 1: PAS system diagram

Controller (Model PAS-100) – in-cab user interface with touchscreen and speaker (and attached light bar).

Aggregator (Model PAS-200) – data collection point for the various sensor technologies. There is a 12 pin circular connector for receiving power and EM transceiver data from the PAS-300 Power Junction Box and an Ethernet port for connection to the PAS-100 PAS Controller. GPS and Mesh antenna connection are located on the top.

Power Junction Box (Model PAS-300) – supplies power to the PAS-100 Controller, PAS-200 Aggregator and up to 6 PAS-400 EM transceivers. Connection made through interconnected cables. One main power input (battery). One transmit/receive data connection with the Aggregator. Power triggered by vehicle ignition switch.

Electromagnetic Transceiver (Model PAS-400) – generates and receives electromagnetic fields for accurate, close proximity object detection. Up to six transceivers may be connected to the Junction Box (PAS-300).

PAS Texting Tag (Model PAS-500) – serves as a tracking tag to track/locate personnel, equipment, etc. The Tag sends customized and canned messages to MineBoss™ and has a panic/warning mode for sending emergency notifications to MineBoss™. The Tag has a rechargeable NiMH battery, two status LEDs, tri-axial EM receiver and GPS.

For more information visit our website or request a Technical Datasheet from your local sales representative.

3. INSTALLATION

Vehicle Installation

Vehicle installation should only be performed by suitably qualified and authorized personnel. Installation will vary at each site and with each different vehicle model.

The Controller should be mounted in the cabin of the vehicle to be in clear view of the driver without obscuring their vision. Ideally the Controller would be close enough for the driver to see the details on the screen and be able to touch the screen.

The Aggregator and Power Junction Box can be placed inside the cabin (space permitting) or outside the cabin in a secure position so as to avoid damage. PBE can supply protective enclosures for these components.

EM sensors should be installed evenly around the side of the vehicle with the label facing outward and the text upright. To ensure the sensor is vertical a panel may need to be welded to the side of the vehicle. The amount of sensors will vary depending on the size of the vehicle, however, the normal installation assumes four or six sensors.

PAS Controller Setup

From the PAS screen, press F1 to access the Main Menu (see Figure 2 below).

The fully functional touch screen on the Controller (Model PAS-100) can be used to select setup options. On each of the setup screens select 'Done' to return to the Setup Menu or 'Next' to continue to the next option. When finished making changes press F1 to commit (save) those changes or F5 to discard them and return to the PAS screen.



Figure 2: PAS Controller hotkeys

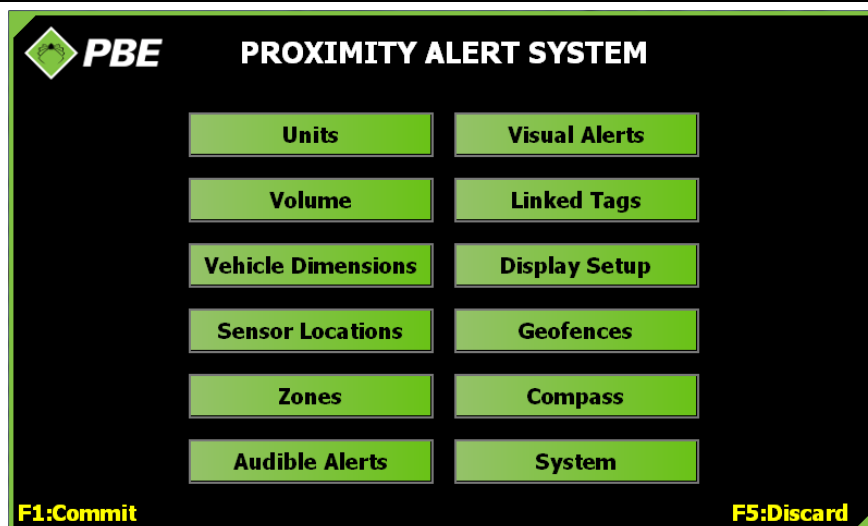


Figure 3: Main Menu

The following describes each of the setup options.

Units



Figure 4: Units menu screen

Select the desired units of measurement (US Standard or Metric) to be displayed throughout the application. The green arrow highlights the selection.

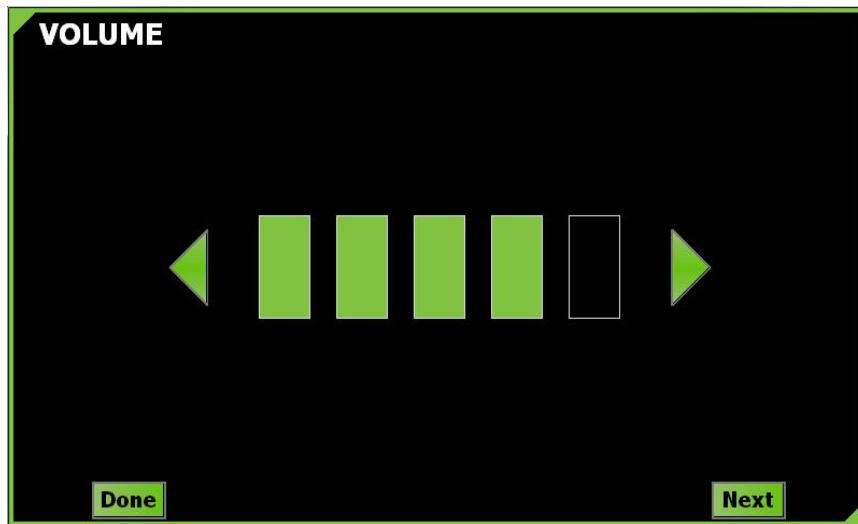
Volume

Figure 5: Volume menu screen

Select the speaker volume level by tapping the arrows to increase or decrease the volume.

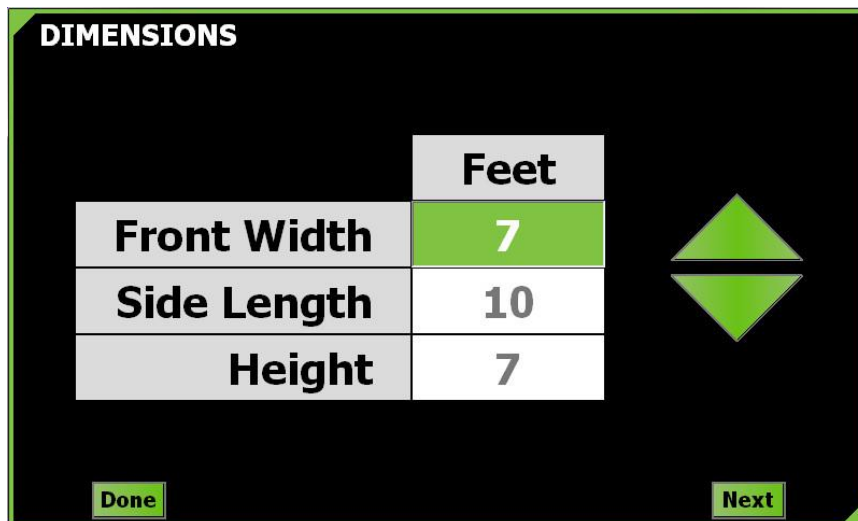
Vehicle Dimensions

Figure 6: Dimensions menu screen

Enter the dimensions of the vehicle. Tap the displayed dimension for front width, then use the up and down arrows to change the value. Repeat for vehicle side length and height. The vehicle should just fit inside the rectangular prism formed by the dimensions. Vehicle articulation is not supported.

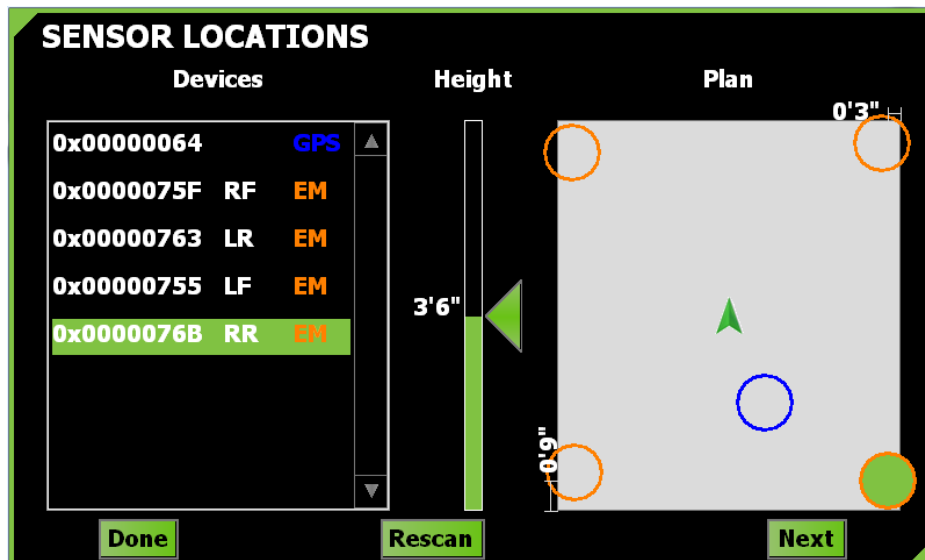
Sensor Locations

Figure 7: Sensor Locations menu screen

Sensors installed on the vehicle are displayed in the Devices list on the left (LF = Left Front; RF = Right Front; LC = Left Center; RC = Right Center; LR = Left Rear; RR = Right Rear). Each sensor must be selected separately, and then the actual height it was installed on the vehicle is represented on the Height bar by dragging the green arrow up or down.

The actual position of each sensor on the vehicle will also need to be represented in the Plan view (depicted by the grey box on the right of the screen). Drag the sensor's corresponding circle (highlighted in green) to its actual installation location on the vehicle. Use the measurements given on the side, as the box is not to scale.

The EM sensors are represented by orange circles. The GPS antenna location is represented by a blue circle. Faulty sensors are colored red.

To delete a sensor from the list, if it is no longer required (eg. damaged), right-click or tap and hold the item in the Devices list.

Press the Rescan button to get immediate feedback about all currently connected sensors. If the Rescan button is colored red, it means there is no connection to the PAS-200 Aggregator.

Zones

ZONES					
	Distance (Feet)				
	Obstacle	Person	Light Vehicle	Heavy Vehicle	Geofence
Dropout	495	495	495	495	591
Mid/Far	331	331	331	331	331
Close/Mid	59	59	59	59	59
Urgent	33	46	36	33	30

Figure 8: Zones menu screen

The **Dropout** zone is the artificial maximum range beyond which objects will disappear from the PAS screen. Its purpose is to limit distraction and reduce on-screen clutter by dropping objects that are not in the vicinity of the driver, which would otherwise be displayed due to the extended tag communications range.

The **Mid/Far** and **Close/Mid** values define the two boundaries between three arbitrary range classification zones; Close, Mid and Far. The Mid/Far value must be higher than the Close/Mid value. The number of objects in each of these three zones is indicated in the four corners of the PAS screen for each object type. Each of the three zones has its own color, which is used to highlight the object's distance displayed in the tag list; Close is red, Mid is orange and Far is yellow.

The **Urgent** zone defines the range within which an object will trigger the urgent alarm, light bar flashing and on-screen highlighting of the object. The alarm can be acknowledged by pressing the PAS screen.

To change a value, tap on the desired panel and then use the up and down arrows.

Audible Alerts

AUDIBLE ALERTS					
	Obstacle	Person	Light Vehicle	Heavy Vehicle	Geofence
Far	1	1	1	1	1
Mid	2	2	2	2	2
Close	3	3	3	3	3
Urgent	On	On	On	On	On
Done		Next			

Figure 9: Audible Alerts menu screen

Select the amount of beeps sounded when an object comes into each specified zone. To change the value, tap on the desired panel and cycle through the options: 1, 2, 3, or Off (then back to 1...). The **Urgent** alarm is either On or Off.

Visual Alerts

	Obstacle	Person	Light Vehicle	Heavy Vehicle	Geofence
Far	On	On	On	On	On
Mid	On	On	On	On	On
Close	On	On	On	On	On
Urgent	On	On	On	On	On

Done Next

Figure 10: Visual Alerts menu screen

Select whether the light bar is on or off for each object type and zone. The light bar is:

- **off** when no objects are detected
- **white** when an object is detected in the Far zone
- **yellow** when an object is detected in the Mid zone
- **red** when an object is detected in the Close zone
- **flashes red** when an object is detected in the Urgent zone
- **flashes red twice as fast** when the caution alarm is sounding.

Linked Tags

	Obstacle	Person	Light Vehicle	Heavy Vehicle	Geofence
Maximum Links Allowed	5	None	Unlimited	Unlimited	Unlimited
Auto Unlink on Timeout (mins)	30	No	30	10	30
Auto Unlink on Pos.Chg. (feet)	No	No	120	No	No
Trigger Light Bar	No	No	No	No	No

Done Next

Figure 11: Linked Tags menu screen

If a driver is aware of a particular object that comes into range regularly, the object can be linked with his or her vehicle, inhibiting its audible and visual warnings, thereby reducing nuisance alarms. A tag can be linked by double-tapping on the object's entry in the tag list on the PAS screen. Double-tapping it again unlinks it. It will be unlinked automatically under certain conditions described below.

Tap on each field to toggle through the available options.

- **Maximum Links Allowed** toggles from 'None' to 9, then 'Unlimited'. If 'None' is selected then the driver cannot Link to that particular type of tag, and the values of the other options below are greyed out and cannot be adjusted. This option can be used to limit misuse of the linking feature by enforcing an optional upper limit on the number of tags that the driver is allowed to link.
- **Auto-Unlink on Timeout (mins)** toggles from 'Never' to 120, in increments of 10 minutes. This is the maximum time that the linked tag can be absent from the PAS screen for without causing an automatic unlink. As long as the linked tag continues to re-appear on the PAS screen at least once within this time setting, it will remain linked (notwithstanding other unlink mechanisms). This behavior is disabled if set to 'Never'.
- **Auto-Unlink on Position Change** toggles from 'No' (disabled) to 300 ft in 60 ft increments, or in metric from No to 100 m in 20 m increments. At the time an object is linked, its GPS position is recorded. If it moves from that location by more than the value of this setting then it will be automatically unlinked. This behavior is disabled if set to 'No'. This feature requires GPS. This feature is not applicable to geofences-as-tags.
- **Trigger Light Bar** toggles 'Yes' or 'No'. If 'Yes' is selected, Linked objects can still create light-bar warnings when they come into range. Regardless of this setting, audible warnings are always suppressed for linked tags.

PAS Display Setup

	Cam Res
Outer Range	330
Inner Range	60
Tag Dropout	10
Tag List Sort	Distance/Closest
Location Max	3
Caution Thr.	10
Lowest Backlight	4
Dim Factor	128
Auto Brightness	Yes
Cam Res	Wide

Done Next

Figure 12: Display Setup menu screen

Select an option and use the up and down arrows to select the desired value.

Outer Range defines the coverage of the zoomed-out PAS screen. Allowable values are from 100 to 600 feet or 30 to 183 metres.

Inner Range defines the coverage of the zoomed-in PAS screen. This cannot be more than the Outer Range and not less than 10 feet or 3 metres. It is intended and highly recommended that this be set to the coverage distance of the electromagnetic transceivers (approx. 30 feet or 9 metres).

Tag Dropout is the number of seconds an object remains on the PAS screen after its last known detection.

Tag List Sort defines the order in which the objects are presented in the Tag List on the PAS screen. They can be sorted by distance with either the closest or farthest on top, or they can be ordered by their appearance time with either the newest or oldest detected tag on top.

Location Max limits the number of EM transceivers used to pinpoint a tag.

Caution Threshold - When more than this many tags (not including geofences-as-tags) are detected, the caution alarm sounds.

acknowledged (silenced) by tapping the screen.

Geofence

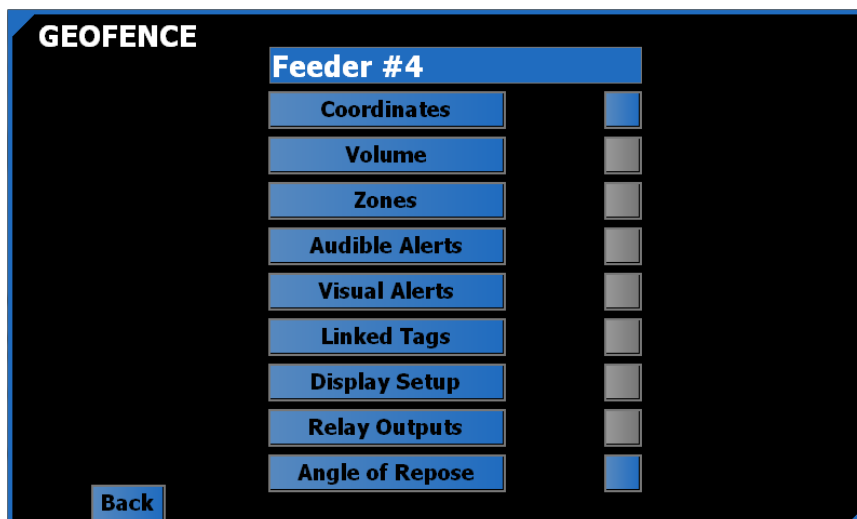


Figure 14: Particular Geofence menu screen

This screen allows you to set the name of the geofence (up to 15 characters), its perimeter and other configuration settings that can optionally take effect when inside the geofence.

Most geofence sub-menu screens are the same as their main-menu counterparts, but have a blue color theme as a visual reminder that the options being set only apply when inside that geofence and are not the standard configuration (green color theme) which applies when not inside any fence.

The push-button box beside each sub-menu defines whether that menu will, if blue, override the standard settings when inside the geofence, or if grey, have no effect.

If the box beside the Coordinates menu is grey, the geofence will be deactivated.

Angle of Repose (more details below) is specific to geofences and has no main-menu counterpart. Its associated push-button defines whether that feature is enabled or not.

Coordinates

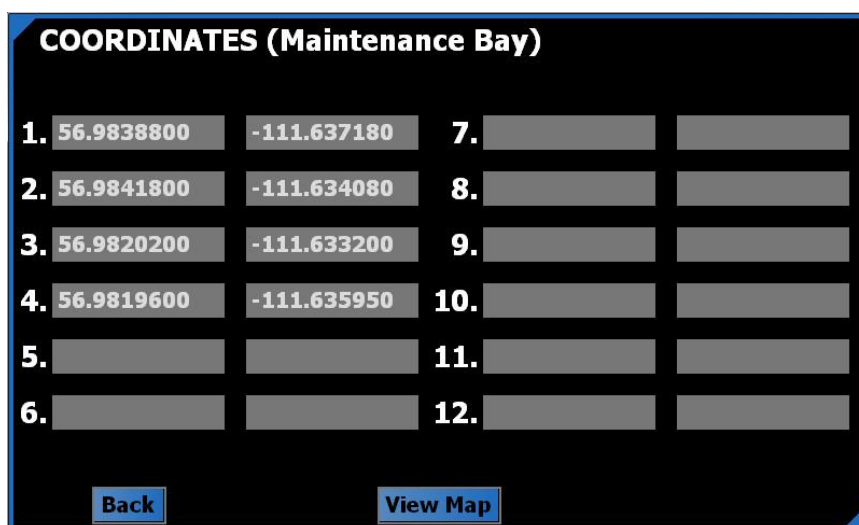


Figure 15: Geofence Coordinates menu screen

Define the geofence polygon as an ordered sequence of non-intersecting points using latitude and longitude values in decimal degrees. Start from point one and don't leave any gaps. The last point should not be a duplicate of the first point.

Pressing F3 on this screen causes the vehicle's current GPS location (if known) to be entered.

Press the View Map button to see the geofence plotted on a map.

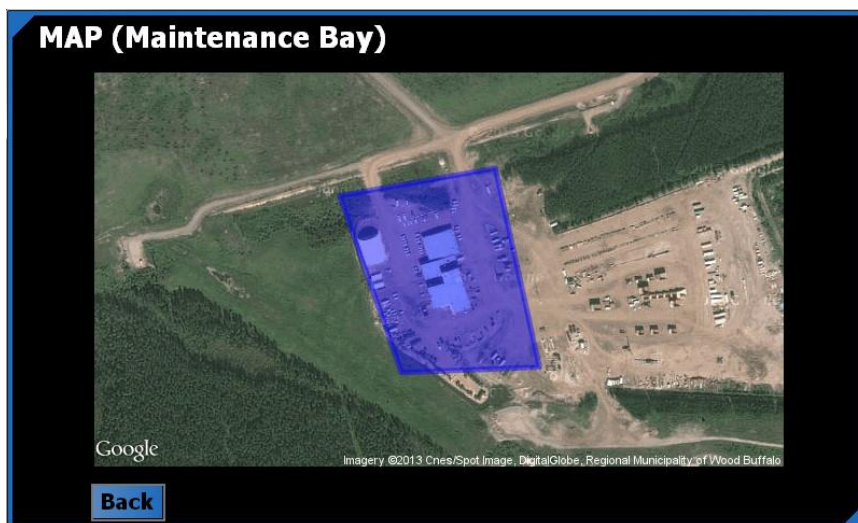
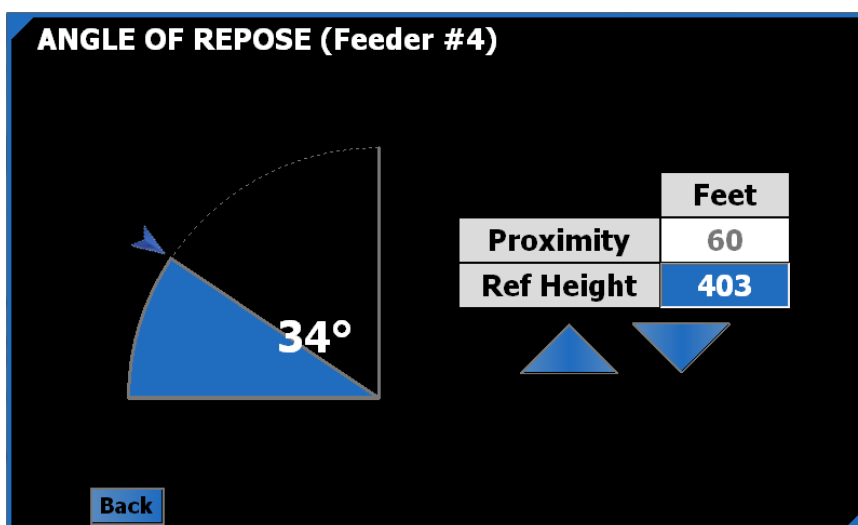


Figure 16: Geofences (Map) menu screen example

Angle of Repose



Angle of repose is intended for use on vehicles interacting with surge piles. The material on the pile is on the verge of sliding at the angle of repose, a conservative value for which must be entered on this screen by dragging the blue arrow.

When the vehicle is within the Proximity distance to the surge pile, PAS will increase the size of the feeder hole (represented by the geofence perimeter) relative to how much higher the vehicle is above the Reference Height. The Reference height is GPS height at the base of the surge pile.

If the vehicle reaches the perimeter of the inflating geofence drawn on the display, then it is at the danger point of falling into the feeder hole if the material suddenly gives way.

As an additional safety feature, it is recommended to enable the geofence's alarm, which will sound if the driver

enters the danger zone (the inflated geofence)

Pressing F3 on this screen automatically fills in the Proximity and Reference Height with current GPS values.

Compass

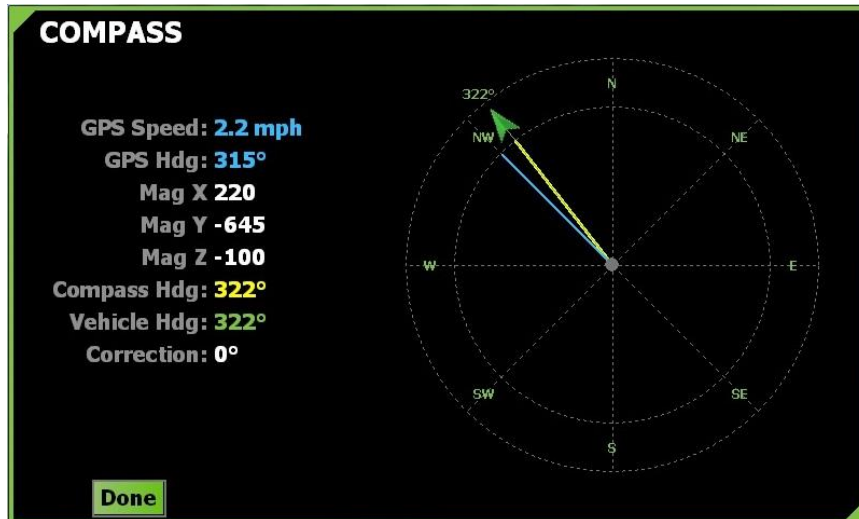


Figure 17: Compass menu screen

The purpose of the Compass setup screen is to calibrate the system's electronic compass, which could have been installed in any orientation.

There are eight calibration points (N, NE, E, etc.) coloured red if they aren't calibrated or green if they are.

When the GPS heading (blue needle) is within +/- 10 degrees of one of those points, a blue button appears at that point.

Press the blue button to set the current X, Y, Z magnetic field strength for that point.

After pressing the blue button, the label will change to green. Any calibrated point can be reset by right-clicking it (or press and hold on the touch screen) and it will revert from green back to red. Pressing F2, F3 and F4 together will reset all points.

When all eight points are green, the yellow compass needle and the draggable green needle/arrow will appear allowing for fine tuning.

Tap and drag the green arrow until it points in the same direction as the vehicle is actually pointing, as indicated by a trusted measurement. The compass is now calibrated.

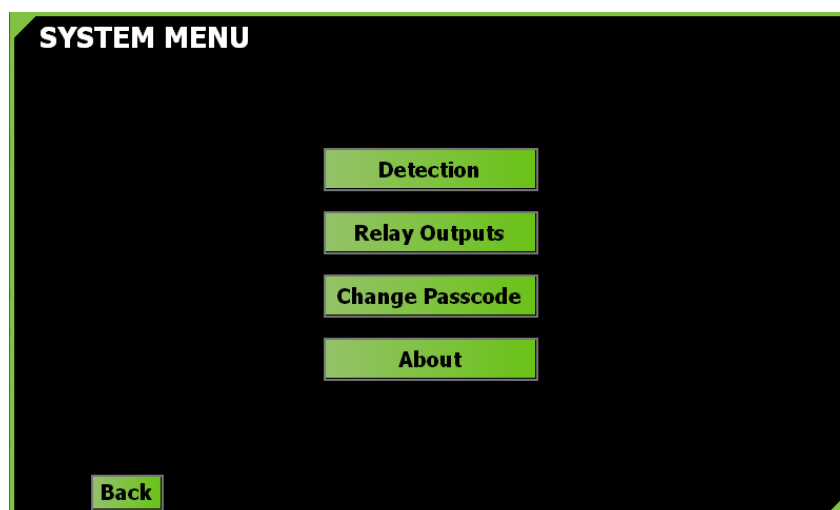
System

Figure 18: System menu screen

The system menu contains various sub-menus, each described below.

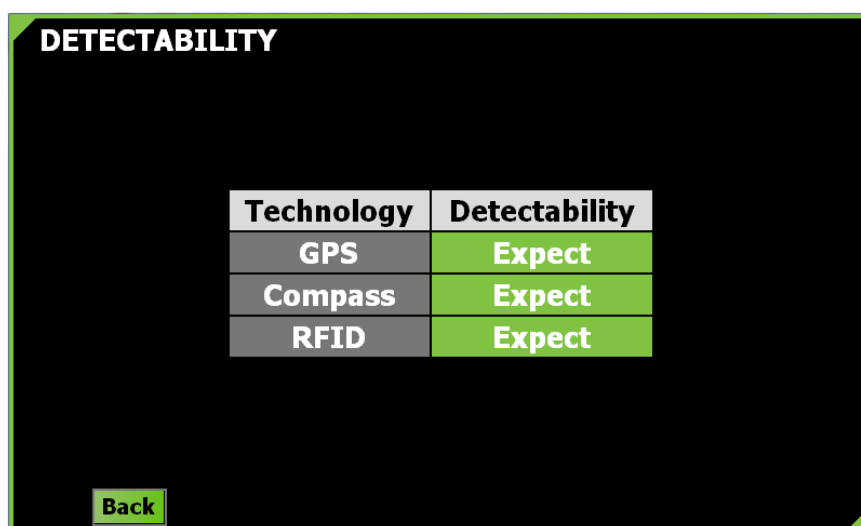
Detection

Figure 19: Detectability screen

The start-up equipment detection screen can be configured to ignore particular technologies which are not in use. Click on an item to toggle its status between 'Expect' and 'Ignore'.

Relay Outputs

RELAY OUTPUTS					
	Obstacle	Person	Light Vehicle	Heavy Vehicle	Geofence
Far	-	-	-	-	-
Mid	2	2	2	-	-
Close	3	3	3	-	-
Urgent	4	4	4	-	-

Back

The PAS-300 Power Junction Box has isolated relay outputs which are controlled according to this screen setup. The closest object of any given type can assert any one of four different relay outputs.

Tap any box to cycle through the five available options; 1, 2, 3, 4 and -. The dash means no relay output is asserted.

Take the above screenshot as an example setup and assume there's an Obstacle tag in the Mid zone and a Personnel tag in the Urgent zone. Two of the four relay outputs will be asserted; #2 (caused by the obstacle) and #4 (caused by the person).

Passcode

ENTER NEW PASSCODE					
1	2	3			
4	5	6			
7	8	9			

Back **Enter**

The various Setup screens and Diagnostic screens (not documented - for PBE use only) can be optionally protected by a passcode set by management to prevent modification by drivers.

The passcode is a barrier and deterrent against drivers changing the setup of the system. PBE can override and cancel the passcode if required.

By default, there is no passcode. Create one from the Change Passcode menu. Enter up to 16 digits. It will need to be entered a second time and if they match the passcode will be set.

The passcode can be removed by just hitting enter twice without pressing any digits on the keypad.

Note that setting a new passcode takes immediate effect. The F1 (Commit) and F5 (Discard) options used to leave setup are not relevant to the passcode. A passcode change cannot be discarded by F5.

The Volume setup screen is, by default, the only menu not protected by the passcode, but this can be overridden by

PBE if customers prefer it is protected too.

About

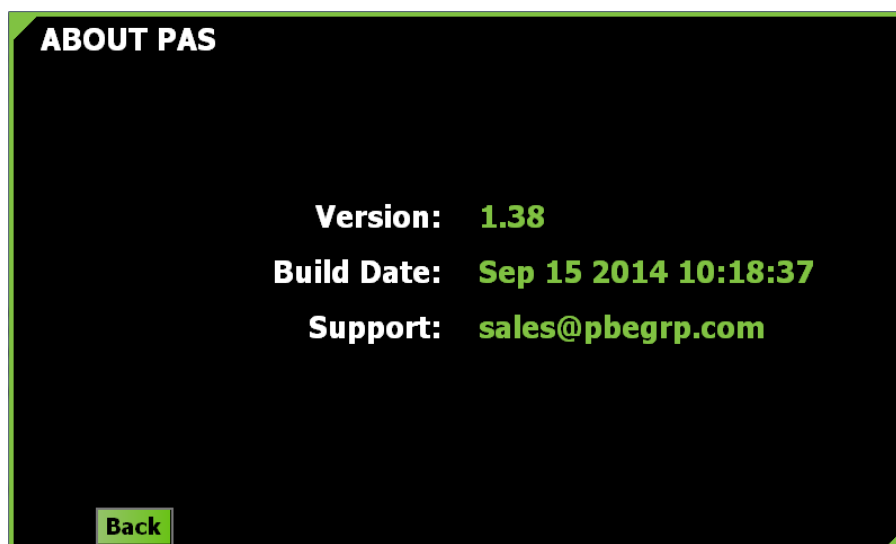


Figure 20: About menu screen

Displays current PAS software version and build date. Nothing can be selected on this screen.

4. OPERATION

Local and company safety protocols and procedures should always take precedence over the warnings provided by the PBE Proximity Alert System. The PAS warnings should be complementary to existing safety systems in place. The Proximity Alert System will not prevent an accident on its own but will provide another level of awareness for the driver.

Switching on

The PAS-100 Controller is powered-up with the vehicle ignition.

Disclaimer

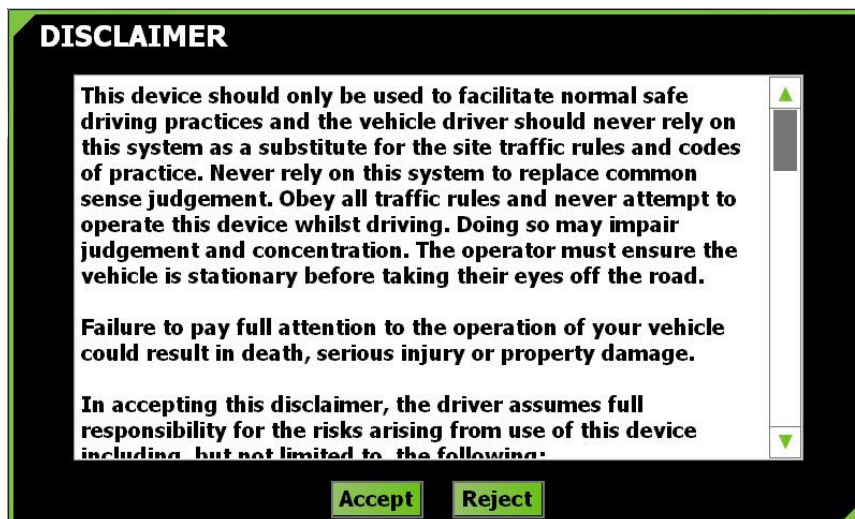


Figure 21: Disclaimer menu screen

As a condition of using PAS, the disclaimer screen must be accepted. It is a reminder that the driver, not PAS, is responsible for and in control of his or her vehicle.

Equipment Detection

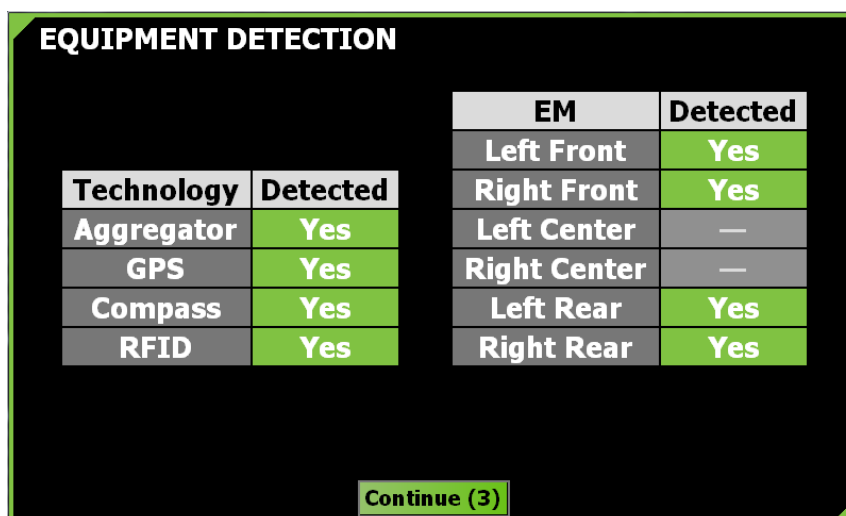


Figure 22: Equipment Detection menu screen

Before normal operation commences it must be verified that all major components of the system are functioning.

The screen will automatically dismiss itself after all equipment has been detected.

If any of the technologies show as 'No' in red, then maintenance is required to troubleshoot the problem.

PAS should not be relied upon if this screen has not been cleared.

For testing or troubleshooting purposes it is possible to continue operation with undetected equipment by clicking on the red entry to acknowledge it (it will turn yellow) and agreeing to a disclaimer.

Using the Controller PAS Screen

When nothing is in range, the PAS screen on the Controller shows the PBE logo on the left and the current time below (see Figure 23). With nothing in range, the right part of the screen shows an empty black circle. The four icons represent (clockwise from top left) Heavy Vehicle, Light Vehicle, Obstacle and Personnel.

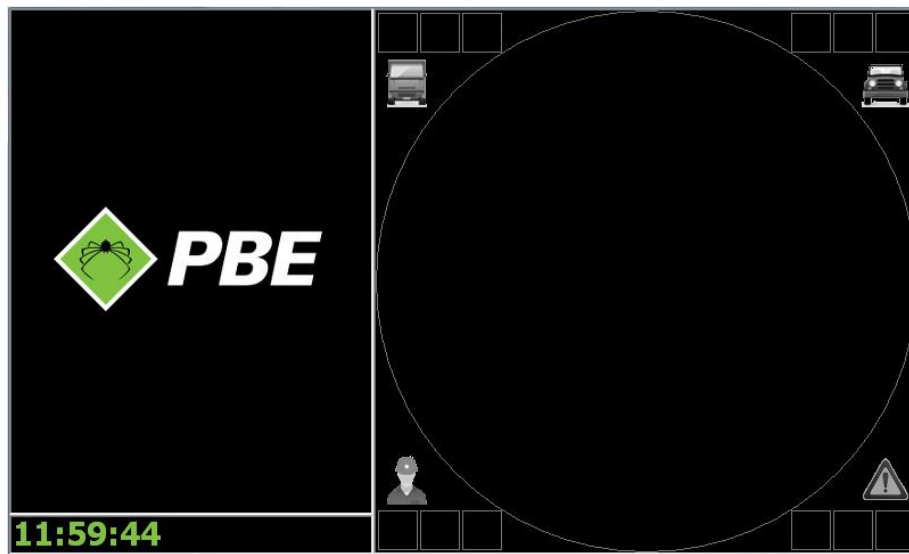


Figure 23: PAS screen with nothing in range

PAS Screen Area Coverage

The PAS screen offers two different levels of area coverage, a zoomed-in view and a zoomed-out view.

The zoomed-out view is a black screen with a small white hub. The white hub symbolically represents the zoomed-in coverage area (although not to scale).

The zoomed-in view is a white screen with no hub.

The triangular icon in the center of the screen is a visual cue that the vehicle is always pointing straight ahead with respect to the PAS coverage view. It is colored green if the vehicle's GPS position is not known or colored blue if it is.

The coverage area is quantified by a number at the base of the area which represents the distance to that boundary.

Zoomed-out Coverage View

Once an object is detected its icon type and ID will appear in the list on the left (see 1 in Figure 24) with the distance it is away from the vehicle. By default, the closest object will appear at the top of the list.

When an object comes within range, a colored square will highlight the object type (2) and the number of those objects will be displayed in the boxes next to the icon (3 & 6). The box furthest from the center represents the number of those objects in the Far zone (as defined in the Setup screens), the middle box represents the Mid zone, and the closest box

the Close zone.

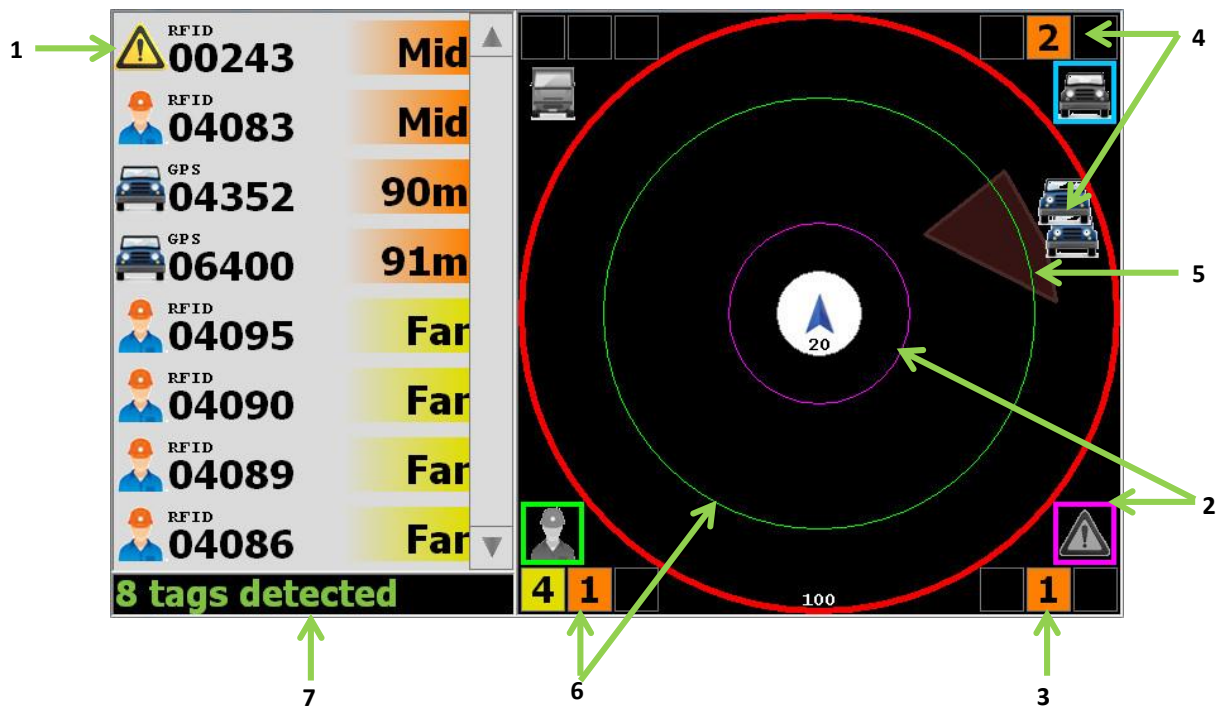


Figure 24: Objects on the Zoomed-out view

Figure 24 shows 8 tags (objects) detected in the Mid and Far zones. In this example the numbers represent:

1. The closest object (top of the list) is an Obstacle with an ID of '00243' and it is in the Mid range as defined by the user.
2. This Obstacle is also depicted on the bottom right of the PAS screen highlighted in purple and with a purple ring is shown on the screen within the Mid zone. As this Obstacle is detected by RFID it is shown as a ring.
3. As this obstacle is within the Mid zone, the number of these objects is shown in the central orange box.
4. Two Light Vehicles are detected; both in the Mid zone and shown as icons as they are detected by GPS.
5. The brown region shows a user defined geofence.
6. There are 5 Personnel tags detected; 4 outside the current Mid zone screen (portrayed by the red outer ring) and one in the Mid zone depicted by the green circle
7. The status or notification bar shows messages and current time (see Notifications below).

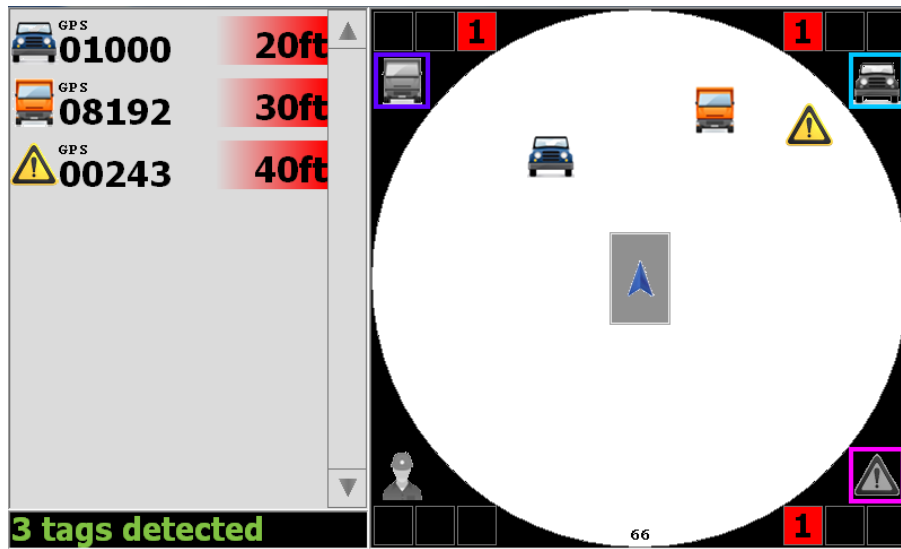
Zoomed-in Coverage View

Figure 25: Objects on the Zoomed-in view

Figure 25 shows three tagged objects detected in the Close Zone.

Note the grey box containing the blue arrow. This box represents the outline of the vehicle and is drawn to scale based on the vehicle dimensions entered in a setup screen.

The tag distances in the tag list are usually to the outline of the vehicle. In some cases, if there is insufficient information, the distance may be reported to the center of the vehicle.

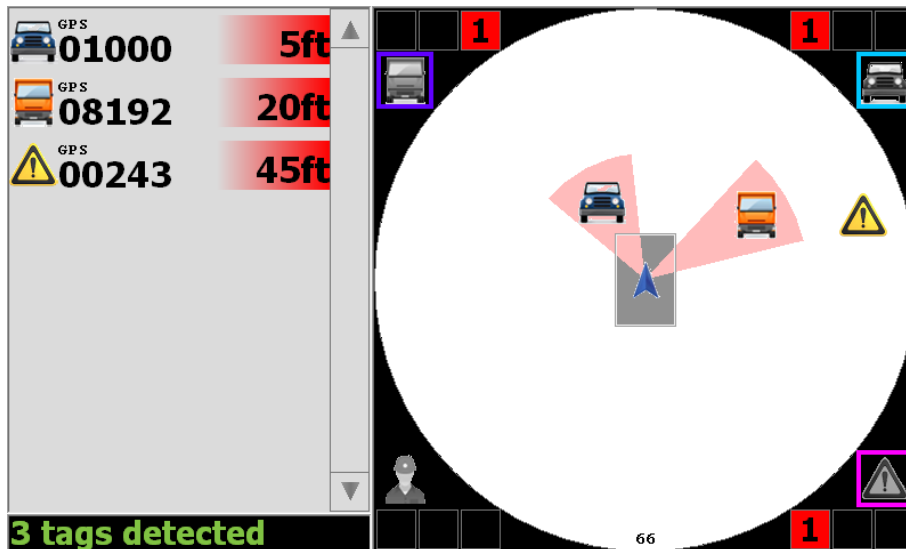
Urgent Alarm

Figure 26: Objects in Urgent Zone

When objects enter the Urgent zone, the driver is alerted in several ways; an alarm is sounded, the objects are highlighted with a red sector and the light bar is flashed.

The driver can acknowledge (silence) the alarm by touching anywhere inside the coverage area of the PAS screen. However, the alarm cannot be silenced if there are personnel in the urgent zone.

Figure 26 shows three tagged objects detected in the Close zone, two of which are within the urgent zone (represented by the red sectors).

Caution Alarm

A caution alarm may sound when the number of detected tags increases beyond a threshold in order to warn the driver that system accuracy and responsiveness may be adversely affected. The operator may acknowledge (silence) the alarm by touching anywhere inside the coverage area of the PAS screen.

Geofence Alarm

A geofence alarm may sound if inside the perimeter of a geofence which has the alarm enabled. The operator may acknowledge (silence) the alarm by touching anywhere inside the coverage area of the PAS screen.

Video

If optional IP cameras are installed, live video streams can be viewed from within the application.



Figure 27: Video screen showing all 4 cameras available

Press F5 to view up to 4 IP camera feeds simultaneously. Click/touch a panel to make it full screen and again to return to the multi-camera view.

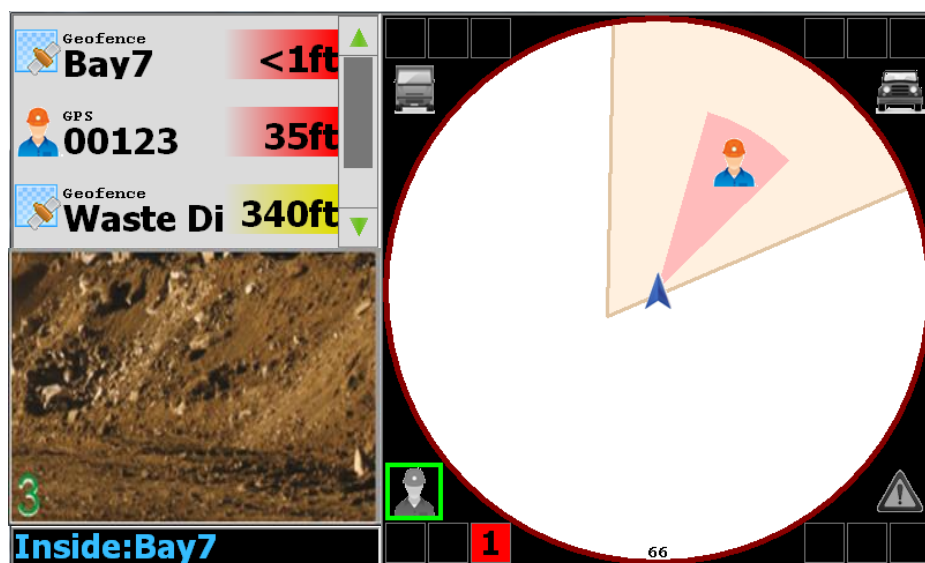


Figure 28: Toggled to only show one video display

On the main PAS screen, press F4 to cycle through side panel modes. The three available modes are:

- a) Full tag list (no video)
- b) Mini tag list with one IP camera view (depicted above)
- c) No tag list, two IP camera views.

Click on a camera window to cycle through the available cameras.

In addition to IP cameras, one analog camera is supported. But only one type or the other may be used, not both. If there are no IP cameras detected, then pressing F5 will display the analog camera feed. The analog camera is only shown full screen and can't be displayed in the side panel.

Vehicle Occupants

To suppress the tags worn by the driver and any other occupants of the vehicle, select the tag in the tag list (highlighted with a green border) and press F3. Repeat for any other occupants.

Press F3 with no tags selected to restore all occupant tags to the list. If a tag leaves its own vehicle's coverage area, it will automatically lose occupant status.

Notifications

Notifications appear on the Controller's main PAS screen (see 7 in Figure 24). Some of the notifications include:

Time of Day = the current time is shown when there are no tags detected

Tags Detected = total number of tags detected

Changes Saved = setup menu changes saved (using F1)

Data Connection Lost = Communication between the Controller and the Aggregator has been lost. Check connections.

Connection restored = Communication between the Controller and the Aggregator has been restored.

Faulty Sensors = Lists the sensor(s) that require service. LF = Left Front; RF = Right Front; LC = Left Center; RC = Right Center; LR = Left Rear; RR = Right Rear

Overloaded Sensors = Lists the sensor(s) that require service. (see above)

Inside: [Geofence name] = Lists the name of the geofence the vehicle has entered.

Exited: [Geofence name] = Lists the name of the geofence the vehicle has exited.

CAUTION: Many tags = There are a high enough number of tags detected that the accuracy and responsiveness of the system could be adversely affected.

Other Features

Event Log

Automated event log recording.

Maintenance

Never open any PAS equipment. For safety reasons, the equipment should be opened only by qualified service personnel.



Cleaning: Use a damp cloth. Do not use liquid or spray detergents for cleaning.

Storage: -30° C (-22° F) to 60° C (140° F)

Operating temperature: Do not operate over 50° C (122° F)

FCC COMPLIANCE STATEMENT

CAUTION: Changes or modifications not expressly approved could void your authority to use this equipment

This device complies with Part 15 of the FCC Rules. Operation to the following two conditions: (1) This device may not cause harmful interference, and (2) this device must accept any interference received, including interference that may cause undesired operation

INDUSTRY CANADA STATEMENT

This device complies with Industry Canada licence-exempt RSS standard(s). Operation is subject to the following two conditions: (1) this device may not cause interference, and (2) this device must accept any interference, including interference that may cause undesired operation of the device.

Le présent appareil est conforme aux CNR d'Industrie Canada applicables aux appareils radio exempts de licence. L'exploitation est autorisée aux deux conditions suivantes : (1) l'appareil ne doit pas produire de brouillage, et (2) l'utilisateur de l'appareil doit accepter tout brouillage radioélectrique subi, même si le brouillage est susceptible d'en compromettre le fonctionnement.