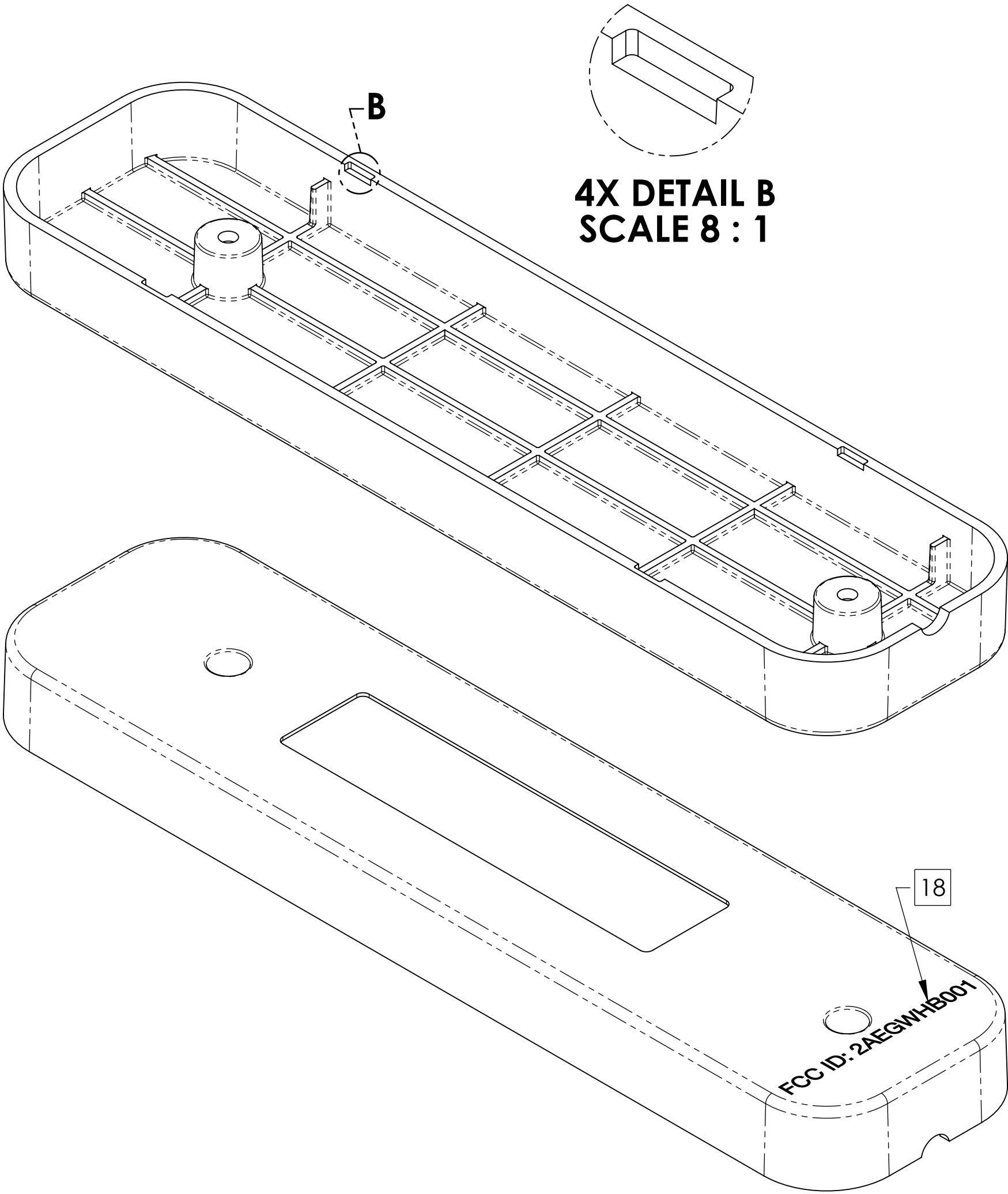


- NOTES: (UNLESS OTHERWISE SPECIFIED)
1. INTERPRET DIMENSIONING AND TOLERANCING PER ASME Y14.5M-1994
 2. LEAD FREE/ROHS COMPLIANT PART: ALL COMPONENTS AND PROCESSES USED MUST COMPLY TO EU DIRECTIVE 2002/95/EC.
 - 3 MATERIAL: POLYCARBONATE
COLOR: WHITE
NO REGRIND ALLOWED
MOLDER TO SUPPLY CERTIFICATION OF MATERIAL TO US GRANT TECHNOLOGIES
 - 4 FINISH / TEXTURE:
 - A ALL EXTERNAL SURFACES TO BE SPI-A2 (HIGH POLISH, NO TOOL MARKS)
 - B ALL INTERIOR SURFACES TO BE SPI-B2 OR BETTER.
 5. TOOL DESIGN, INCLUDING MOLD GATES, EJECTOR PIN LOCATIONS & PARTING LINES TO BE APPROVED BY US GRANT PRIOR TO MOLD CONSTRUCTION.
 6. MOLD TO BE FABRICATED FROM CURRENT REVISION OF USG-1510 CAD MODEL, SUPPLIED BY US/GRANT.
 7. ALL PART FEATURE DIMENSIONS UNDEFINED BY THIS DRAWING TO BE DERIVED FROM CURRENT REVISION OF US/GRANT CAD FILE USG-1510 PER ANSI Y14.41-2003 DIGITAL PRODUCTION DEFINITION DATA PRACTICES WITHOUT EXCEPTION, UNLESS AUTHORIZED BY US GRANT.
 8. TOLERANCES ARE NON-ACCUMULATIVE.
 9. FLASH NOT TO EXCEED .002 INCHES.
 10. PARTING LINE OFFSET NOT TO EXCEED 0.001 INCHES.
 11. VENDOR MUST HAVE WRITTEN APPROVAL FOR CAVITY DRAWINGS SHOWING EJECTOR PIN AND GATE LOCATION FROM US GRANT BEFORE TOOL STEEL MAY BE CUT
 12. VENDOR TO SUBMIT FIRST ARTICLE SAMPLES FOR APPROVAL BY US GRANT ENGINEERING.
 13. VENDOR TO SUBMIT DIMENSIONAL INSPECTION REPORT WITH FIRST ARTICLE
 14. PART TO BE FREE OF VISIBLE DEFECTS INCLUDING SINKS, STRESS AREAS, VOIDS, POROSITY, CRACKS, BUBBLES, SCRATCHES, EMBEDDED PARTICULATE, ETC. UNLESS WRITTEN AUTHORIZATION IS PROVIDED BY US/GRANT
 15. EXTERIOR SURFACES TO BE FREE OF EJECTOR MARKS AND OTHER COSMETIC DEFECTS INCLUDING, BUT NOT LIMITED TO SPLAY, INCLUDED PARTICLES, BURN MARKS AND SIMILAR IMPERFECTIONS
 16. PART TO BE PROVIDED TO US GRANT CLEAN. THIS INCLUDES FREE OF EXTERNAL MOLD RELEASE, DEBRIS, DUST, OR OTHER CONTAMINANTS.
 17. PACKAGE PART IN BULK WITH SUITABLE PROTECTIN TO PREVENT PART DAMAGE FROM SHIPPING & HANDLING. LABEL OUTSIDE OF PACKAGE WITH PART NUMBER AND CURRENT REVISION.
 - 18 PAD PRINT ARTWORK, (USG-1510-AW), IN LOCATION SHOWN. COLOR: LIGHT GREY

REVISIONS				
REV.	DESCRIPTION	DATE	INC BY	APVD
P1.A	INITIAL RELEASE	06/14/2012		DSF
P1.B	REMOVED POSTS, ADDED ADHESIVE RECESS, REVISED OVERALL DIMENSIONS.	09/04/2014		DSF
P1.C	INCREASED OVERALL HEIGHT	09/05/2014		DSF
P1.D	REVISED 4X POSTS	09/08/2014		DSF
P1.E	REVISED OPENING FOR PWR CONNECTOR	11/04/2014		DSF
P1.F	ADDED FCC MARKING, NOTE 18.	04/07/2015		DSF
P1.G	REVISED NOTE 18	04/07/2015		DSF



PROPRIETARY AND CONFIDENTIAL:
THE INFORMATION CONTAINED IN THIS DRAWING IS THE SOLE PROPERTY OF US GRANT TECHNOLOGIES. ANY REPRODUCTION IN PART OR AS A WHOLE WITHOUT THE WRITTEN PERMISSION OF US GRANT TECH. IS PROHIBITED.

THIRD ANGLE PROJECTION

DRAWN BY: DSF 08/18/2014

MATERIAL: SEE NOTE 3

FINISH: SEE NOTE 4

TOLERANCES: (DIMENSIONS ARE IN MILLIMETERS)

ANGULAR: $\pm 1/2^\circ$

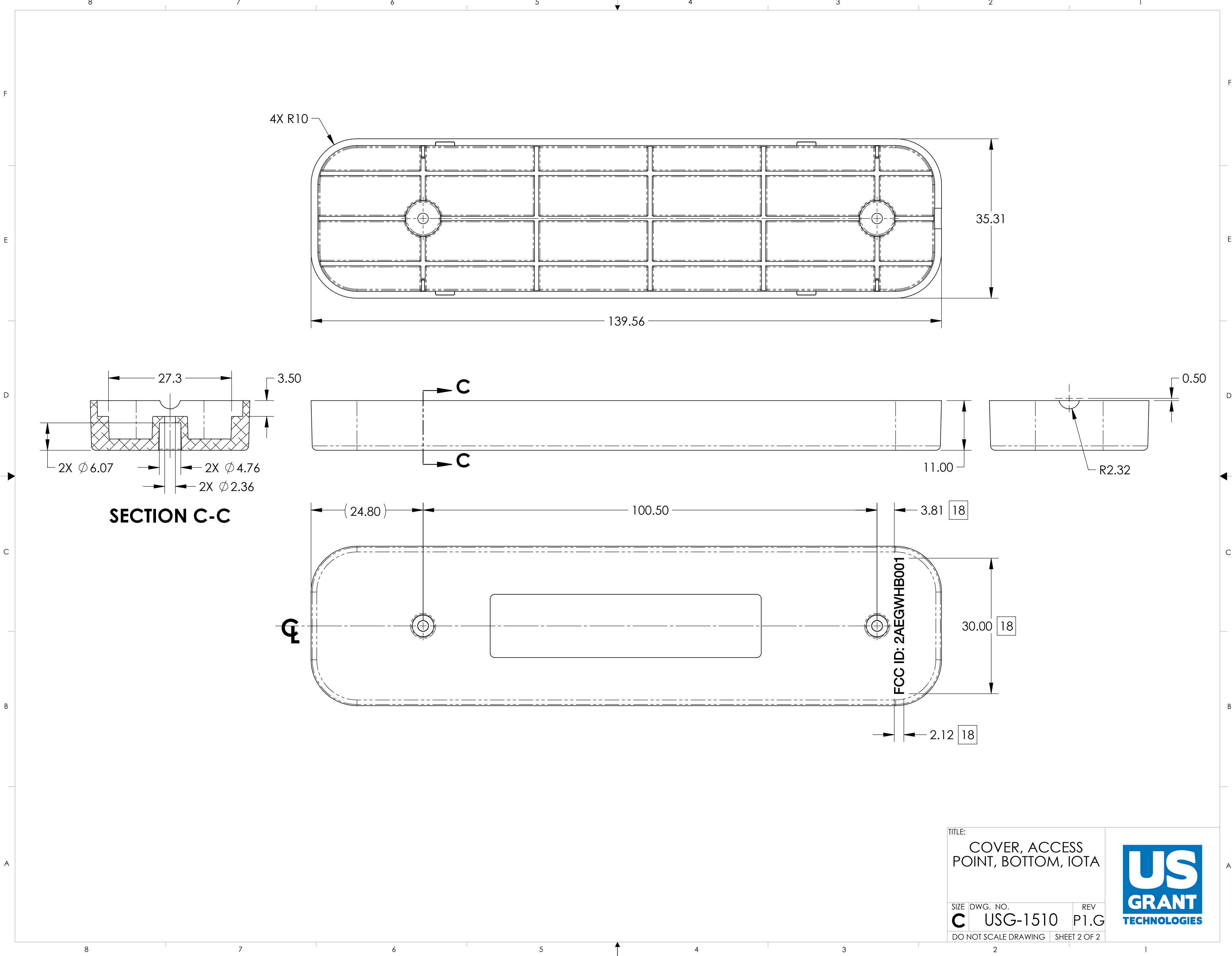
X.X ± 0.3

X.XX ± 0.13

TITLE: COVER, ACCESS POINT, BOTTOM, IOTA

SIZE	DWG. NO.	REV
C	USG-1510	P1.G

DO NOT SCALE DRAWING SHEET 1 OF 2



TITLE: COVER, ACCESS POINT, BOTTOM, IOTA		
SIZE C	DWG. NO. USG-1510	REV P1.G
DO NOT SCALE DRAWING		SHEET 2 OF 2

