



INSTRUCTIONMANUAL

CAR CD PLAYER

MA6202BT



Welcome!

Thank you very much for pushing the Multi Media player .For the best possible performance from your unit .This unit lets you enjoy a variety of features using the remote commander accessories.Please read this manual carefully before using ,this manual made particular instruction for installation and using ,please keep it in as safe place for future reference

General

1.This device 's DC voltage is 12 V .Please check the DC voltage on your car before you install the device .

1.In order to avoid electrical short-circuit ,please connect ground wire with battery negative.

2.Always ensure when installing wire connection is done properly .After the wire connection is finished,then you connect negative wire on the unit with the negative on your battery.

3.In order to avoid electrical short-circuit,please maintain the wire insulation.

4.In order to avoid knock down other object,please affix all of the wires.

5.When the fuse is blown,please replace with a fuse which is the same specification.

7.Please use high quality loudspeakers of 4~8Ω

Safety Precautions

In order to prevent injuries and fires ,please pay attention the following instruction:

In order to prevent short circuits, d not drop metal objects in the device .

If there is smoke or a peculiar smell in the device ,please turn off the power immediately.

Please do not install the device in an area with direct sunlight,high temperature,high humidity or dust.

When replacing the fuse use one that is the same as specificationIf you are using the different specification of the fuse ,it may cause failure of the device

In order to prevent short circuits ,ensure you pull out the power wire when you replace the fuse

In order to be able to deal with road and changes in traffic conditions lower the volume while driving .

Technical specifications

Entire:

SNR.....65dB

Frequency

response.....20HZ~20KHZ

Output.....Audio output

Tone control.....Treble/Bass 100H

Power amplifier:

Output.....loudspeaker outp

Loudspeaker

impedance.....4~8Ω

Maximum power

Bluetooth

Bluetooth version.2.1+EDR

Frequency response.....20Hz-20KHz

Transmitting distance.....10m

FM

frequency.....87.5MHZ~108MHZ

Sensitivity.....22dB

SNR.....60dB

Distortion(1KHZ).....<1%

Frequency

response.....30HZ~15KHZ

Trouble shooting

Before going through the check list, check the wiring connection diagram firstly. If any of the problems persist after checklist has been made, consult your nearest service dealer.

No Power	The car ignition key has not been switched on	If the power supply is properly connected to the car accessory terminal, switch the ignition key to ACC
	The fuse is blown down	Replace a new fuse
No Sound	Volume is at minimum	Adjust volume to desired level
	Wiring is not properly connected	Checking wiring connection
	Mute state	Turn off the mute function
The Operation button do not work	The built-in microcomputer is not operating properly due to interference	Press the RESET button or re-install the front panel properly.
The Radio or automatic selection does not work	The antenna cable is not connected correctly	Connect the antenna cable correctly
	The signals are too weak	Select the station manually

Notes on Disc

*A dirty or defective disc may cause sound dropouts while playing ,To enjoy optimum sound , handle the disc as follow

*Handle the disc by its edge. To keep the disc clean, do not touch the surface .



*Do not stick paper or tape on the disc

*Do not expose the discs to direct sunlight or heat sources such as the hot air-ducts, or leave them in a car parked in direct sunlight where there can be a considerable rise in temperature inside the car

*Before playing ,clean the disc with an optional cleaning cloth. Wipe each disc from the center out

*Do not use the solvent such as benzine thinner , commercially available cleaners or abrasive spray intended for analog disc.

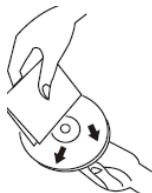
*Do not use second hand or rental discs that have a sticky residue on the surface (for example, from peeled-off stickers or from ink or glue leaking from under the stickers)



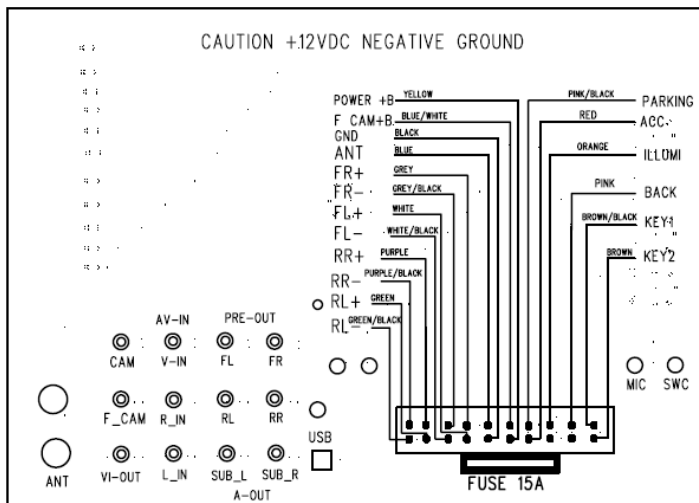
*Do not use rental disc with old labels that are beginning to peel off .



*Do not use the discs with labels or sticker attached

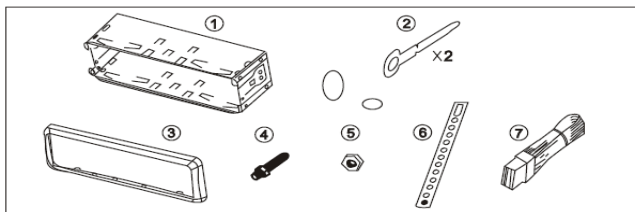


Wiring Diagram

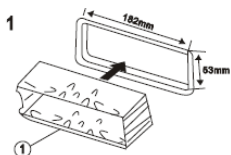


Installation

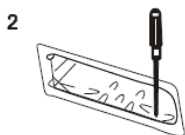
Part list (The number in the list are key to the installation)



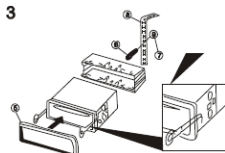
Mounting example ①



Put in the mounting sleeve



Bend these clowns outward for a tight fit, If necessary



Fasten the rear bracket screws and backside harness, and fix the unit well

Before detaching the front panel , be sure to turn off and press the button ,the front panel to leave , side it to the left , pull it off to awards you

Firstly inset the left side of the front panel to the main unit .Push the irtght side of the front paneluntil it looks firmly into the main unit,at one time , insert the right side of the front panel into the main unit

Do not touch the contact of the front panel or the unit body , since it may cause in poor electronic contacts,if dirt or dust get into the contacts ,wipe them with a clean ,dry cloth

Location of the front panel

- | | |
|----------------|---------------|
| 1.Power on/off | 8. ⏮ |
| 2.Mode: | 9.1/2/3/4/5/6 |
| 3.Band | 10.APS |
| 4.Mute | 11.LOUD |
| 5.CLK | 12.VOL+/- |
| 6.EQ | 13.SEL |
| 7. ⏭ | 14.Reset |

Remote Control Operation



Remote Control Operation

- 1.Power button ---Press power button to turn On/Off the power
- 2.Mute Button---Press mute button to cut down the sound output ,press it again to resume the previous sound level
- 3.Band Selector---During radio mode ,press(BAND) button repeatedly to select bands in the following order:FM1--FM2--FM3--FM--AM1--AM2
-----During the playing mode,pres(BAND) button to switch to AUTO ,PAL,NTSC system
- 4.CLK ---Press to set up the time
- 5.SEL ---Press to switch VOL/BAS/TRE/FAD/BAL
- 6.Volume Increasing/Decreasing ----Press VOL-/VOL+ Turn up and turn down the volume
7. ◀◀/▶▶ ---Fast forward and fast backward
- 8.APS --- Press is auto search the radio station
- 10.1/▶▶:USB / SD PLAY MODE --- Press is PLAY / PAUSE conversion operations
- 11..2/INT:USB / SD PLAY MODE --- Press is INT play mode
- 12.3/RPT:USB / SD PLAY MODE --- Press is RPT play mode
- 13.4/RDM:USB / SD PLAY MODE --- Press is RDM play mode.
- 14.5/-10:USB / SD PLAY MODE ---short press is subtract 10 songs repertoire,long press is previous folder
- 15.6/+10:USB / SD PLAY MODE ---short press is add 10 songs repertoire,long press is next folder
- Number button -----press 1/2/3/4/5/6/7/8/9/0 buttons to choose the songs number of the music/video from the USB/SD/CD/DVD
16. disc
- 17.ST

Operation Directions

Resetting the unit

1. Before operating the unit for the first time or after replacing the car battery, you must reset the unit.
2. Press the RESET button with a pointed object

Note:

Pressing the RESET button will erase the clock setting and some memorized function.

Listen to the station program Power on /off

Press the power button to turn on the unit .

Memorizing the desired stations.

You can preset up to 18 FM stations ,up to 12 AM stations in the order of your choice.

1. Press BAND button repeatedly to select, each time you press the buttons in the band changes as follows:

FM1--FM2---FM3--AM1--AM2--FM1

2. Press either side of the **▶▶** button to choose the station that you want to store on number 1 to 6

3. Press **◀◀** button repeatedly until

the desired number button 1 to 6. Press the 1 to 6 number button for 2 seconds ,the number button indication appears in the display

Note:

If you try to store another station on the same number button ,the previously stored station will be canceled

Receiving memorized stations

1. Press the number button 1-6 on which the desired station is stored

Note:

If you cannot turn in a preset station, press either **▶▶**/**◀◀** button until the desired station is received

FM stereo /mono control

Press the button to select FM Stereo /MONO reception . A display reading of “ST” or indicates the “STEREO” mode is selected, however, it changes to “ST” whenever an actual stereo broadcast station is being received. If the stereo station is too weak for proper reception, or , interference ,background noise is present, set to :MONO” mode. Although signal will be heard in monaural, reception will be improved

Playing CD/Mp3

Turn on the connected mobile color TV and select the video input so that you can view the pictures from this unit

This unit switch the color system, PAL/NTSC. According to the TV

Play/Pause

- 1.If a disc is already inserted ,”CD/MP3/CD” appears on the screen start playing automatically .
- 2.When disc playing , press (▶||)button about one second ,pause playing
- 3.Press this button again ,return to normal play

Automatic Music Sensor

During CD/CD playing, if want to forward or backward to locating a track, repeatedly press ►► or ◄◄ button until to locating each track you want

Fast forward /backward

- 1.During DVD/MP4/VCD/CD playing,press ►► or ◄◄ button on 2 seconds for searching track forward or backward ,it includes four grades ,press the button once for

one shift of speed

Repeat Play

During CD/CD/MP3 playback press RPT button , repeat play start and display RPT,To return to normal play mode ,select REP-OFF

View play

During CD/MP3/CD playing ,press the SCAN button on 2 second to play the first 10 second of each track in order . To cancel the function , press it again

Random Play

During CD/MP3 playback press RDM button , random play start and display RAM To return to normal play mode ,select RAM-OFF.

Play SD/USB

Insert SD card or USB flash memory to the slot,can directly play

Remark:SD card including CF/MS/SD/MMC cards etc. Other operations are same as DVD playback mode

Listen to Mp3

Mp3 is recognized as the superior standard use the best new international audio data compression technology , it can store more than 160 track and it can continuous play more than 12 hours .

Track direct select to play

You can use the number button 1-10 which on the remote commander direct to select track which you want to play

1.Press 1-10 button on the remote commander select the number which on the entries, the hundred position ,to select track display and flicker on screen immediately

2.Then press ►|| button on the remote commander in the second, start to playing ;if do not press the button more than then seconds ,will cancel the selected track and return to the first track to play

Automatic Music Sensor

1.During playing , press ►► or ◀◀ button for 1 second to locate preceding or succeeding a track

2.If press those button about two second select track forward or backward 10 tracks ,then select

Track display and flicker on screen immediately,and press ►|| button for 10 seconds,start to play the track by selected :if do not press this button is 10 seconds , will come back original track.

Other Functions

Adjusting the sound characteristics

You can adjust the bass , treble balance and fader, you can store the bass the treble levels independently for each source .

1.Select the item you want to adjust by pressing SEL button Each time you press the button ,the item changes as follows:

BAS--TRE--BAL--FAD

2.After selecting the item,adjust the selected item by pressing either side of (VOL+/-)button

Note:If selected item later , do not adjust for 5 seconds , the system will enter volume state automatically

Setting the clock

The clock used a 12-hours or 24 -hours digital indication

- 1.Press (CLK)button about one second will be shown to clock for 5 seconds ,then the display returns to normal play
- 2.Press and old the button about 2 seconds and enter adjust setting and start flash

FCC Statement

This device complies with Part 15 of the FCC rules. Operation is subject to the following two conditions: 1) this device may not cause harmful interference, and 2) this device must accept any interference received, including interference that may cause undesired operation.

Note: This equipment has been tested and found to comply with the limits for a Class B digital device, pursuant to part 15 of the FCC Rules. These limits are designed to provide reasonable protection against harmful interference in a residential installation. This equipment generates uses and can radiate radio frequency energy and, if not installed and used in accordance with the instructions, may cause harmful interference to radio communications. However, there is no guarantee that interference will not occur in particular installation. If this equipment does cause harmful interference to radio or television reception, which can be determined by turning the equipment off and on, the user is encouraged to try to correct the interference by one or more of the following measures:

- Reorient or relocate the receiving antenna.
- Increase the separation between the equipment and receiver.
- Connect the equipment into an outlet on a circuit different from that to which the receiver is connected.
- Consult the dealer or an experienced radio/TV technician for help.

Changes or modifications not expressly approved by the party responsible for compliance could void the user's authority to operate the equipment.

FCC Radiation Exposure Statement

This device complies with FCC RF radiation exposure limits set forth for an uncontrolled environment. This transmitter must not be co-located or operating in conjunction with any other antenna or transmitter.