



AUROCON
IoT based pest management

INSTALLATION OF AUROTRAP

How to install your **AuroTrap** and get started with **the app** on your smartphone

AUROTRAP

Safety and Handling Instructions

- Place the trap on the ground, out of reach of children and securely fastened using the mounting holes.
- Always wear gloves when handling the device and touch only the components needed for servicing (pressure cylinder, battery pack and holder, and bait block).
- Be aware that the pressure cylinder can become very cold when emptied and can cause frostbite.
- Therefore, only handle the pressure cylinder when it has thawed.
- CE marking is only valid when correctly inserted and serviced according to the user manual.
- If dirt needs to be removed, the trap must be switched off, and a bottle brush can be used.
- Use the Daytime off function if the trap is placed where children might have access.
- **NEVER PUT YOUR FINGERS INSIDE THE RODENT TUNNEL!**



AUROTRAP



INSTALLATION/START-UP OF TRAP

- **Open the Trap**
Unlock the trap using the service key.
- **Mount the Trap**
Secure the trap in place using the provided mounting holes.
- **Install CO₂ cartridge**
Insert the CO₂ cartridge. Tighten it securely, but avoid overtightening. Screw it quickly to minimize CO₂ loss.
- **Place Bait**
Position the bait inside the trap as instructed.
- **Turn on the Trap**
Connect the battery pack to power the trap.
Wait for the LED light to turn off, indicating the trap is ready for use.
Note: The initial connection may take up to 30 minutes.
- **Connect via App**
Open the app and scan the QR code for the device. Refer to the next page for detailed instructions.

IMPORTANT!

NEVER DISCONNECT BATTERY
WHEN LED IS LIGHTING!

THIS MIGHT DAMAGE THE
ELECTRONICS!

NEVER PUT YOUR FINGERS
INSIDE THE RODENT TUNNEL



INSTALLATION OF TRAP

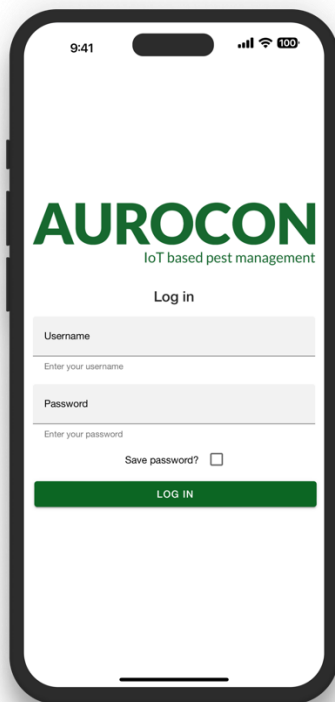
- ✓ The app can be downloaded from the usual app stores, such as the **App Store** for iPhones and **Google Play** for Android phones.
- ✓ Search for **AuroTrap**.
- ✓ Once the app is downloaded, **the logo** on the screen will look like the one shown below.



APP

The app is now ready to use and is opened by clicking on the logo.

The login details are received by email once you have been created as a user. This creation is carried out internally in your company.

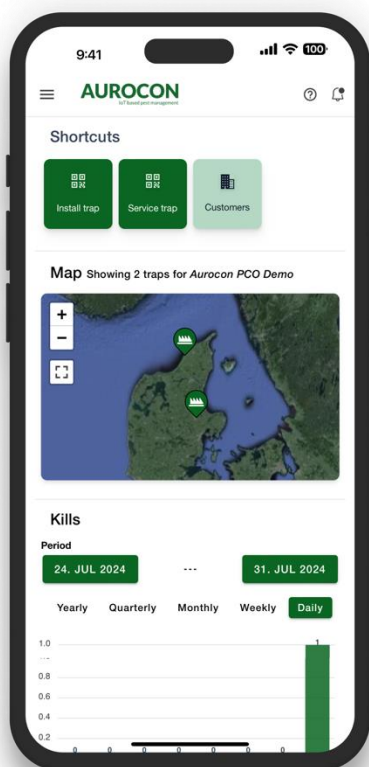


LOG IN

Please enter your login credentials (email and password) in the fields and click on "Log in" to access your account.

Note:

The login credentials are the same as for logging into the web portal.



START SCREEN

Shortcuts

Provides quick access to:

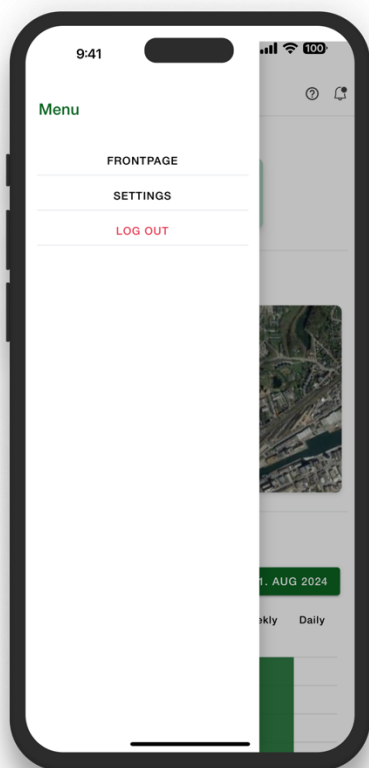
- **Install trap**
To install a new trap, click here, scan the QR code and follow the on-screen guide.
- **Service trap**
To register service on a trap, click here, scan the QR code and follow the on-screen guide.
- **Customers**
Click here to see a list of your customers.

Map

A map overview of the installed traps.

Kills

A graphical representation of the kill statistics. The dates can be customised.



MENU

Click the ☰ menu in the top left corner to go to the sidemenu.

Frontpage

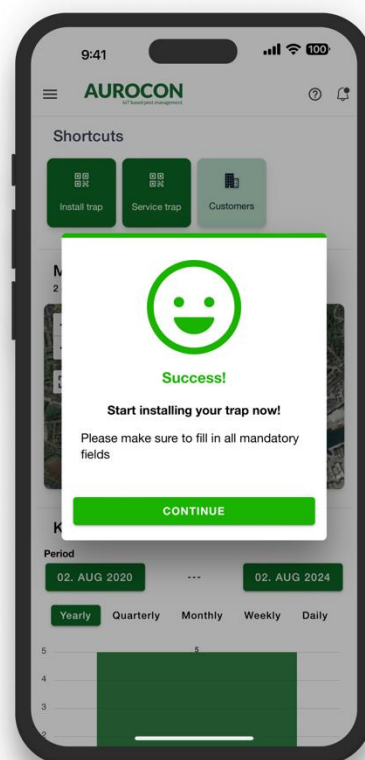
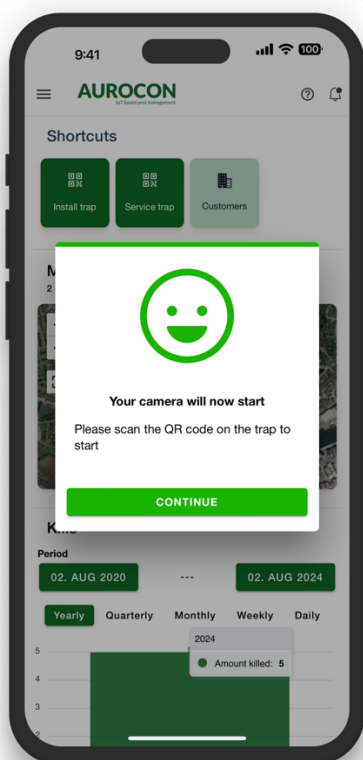
Go to the frontpage of the app.

Settings

Select the desired language.

Logout

Sign out from the mobile app.



INSTALL TRAP

Click install trap

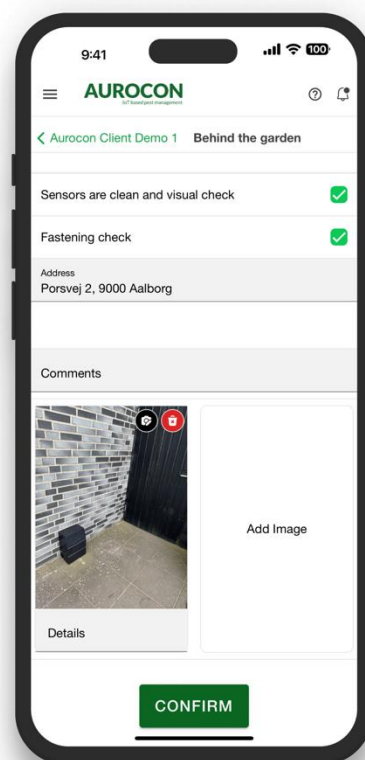
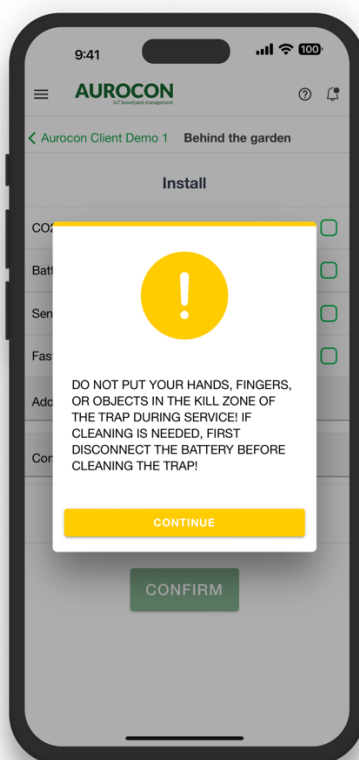
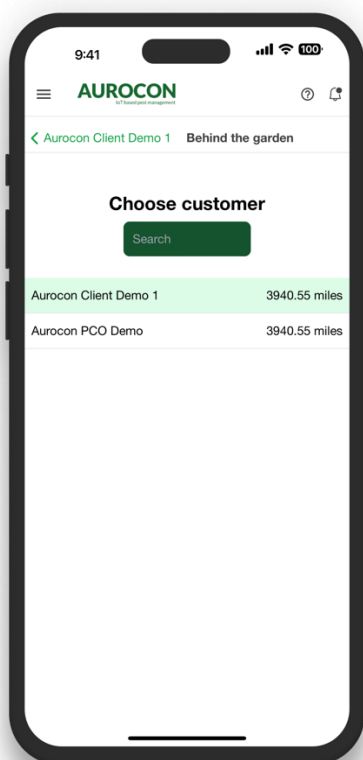
To start the installation.

Your camera will now start

Please scan the QR code on the trap to start.

Start installing your trap now!

Please make sure to fill in all mandatory fields.



INSTALL TRAP

Choose customer

Select the customer for the trap.

Please read the warning

DO NOT PUT YOUR HANDS, FINGERS, OR OBJECTS IN THE KILL ZONE.
REMEMBER TO DISCONNECT THE BATTERY BEFORE CLEANING OR SERVICE.

Click the relevant checkmarks

Please make sure to fill in all mandatory fields.

NOTE: Checking the CO₂ will reset the number of kills left. You must take a picture in order to be able to confirm.

Click CONFIRM to finish the installation of your AuroTrap

RF Specification:

Function	Operation Frequency	Max RF output power:
BLE	2402MHz–2480MHz	4.33 dBm
EGPRS 900	TX(Uplink):880M - 915MHZ; RX(Downlink):925M - 960MHZ	25.53dBm
EGPRS 1800	TX(Uplink):1710M - 1785MHZ; RX(Downlink):1805M - 1880MHZ	25.36dBm
eMTC Band 1	Uplink: 1920 MHz to 1980MHz Downlink: 2110 MHz to 2170 MHz	22.1dBm
eMTC Band 3	Uplink:1710 MHz to 1785 MHz Downlink: 1805 MHz to 1880 MHz	23.81dBm
eMTC Band 8	Uplink: 880MHz to 915 MHz Downlink: 925 MHz to 960 MHz	23.00dBm
eMTC Band 20	Uplink: 832 MHz to 862 MHz Downlink: 791 MHz to 821 MHz	23.01dBm
eMTC Band 28	Uplink: 703 MHz to 748MHz Downlink: 758 MHz to 803 MHz	23.03dBm
NBLoT Band 1	Uplink: 1920 MHz to 1980MHz Downlink: 2110 MHz to 2170 MHz	22.42dBm
NBLoT Band 3	Uplink:1710 MHz to 1785 MHz Downlink: 1805 MHz to 1880 MHz	21.61dBm
NBLoT Band 8	Uplink: 880MHz to 915 MHz Downlink: 925 MHz to 960 MHz	21.38dBm
NBLoT Band 20	Uplink: 832 MHz to 862 MHz Downlink: 791 MHz to 821 MHz	21.13dBm
NBLoT Band 28	Uplink: 703 MHz to 748MHz Downlink: 758 MHz to 803 MHz	20.82dBm

Warning:

1. CAUTION: RISK OF EXPLOSION IF BATTERY IS REPLACED BY AN INCORRECT TYPE. DISPOSE OF USED BATTERIES ACCORDING TO THE INSTRUCTIONS.
2. JE electronic A/S hereby declares that this AuroTrap is in compliance with the essential requirements and other relevant provisions of Directive 2014/53/EU.
3. According to Article 10(2) of Directive 2014/53/EU, the AuroTrap can be used in Europe without restriction.





FCC:

This device complies with part 15 of the FCC Rules. Operation is subject to the condition that this device does not cause harmful interference (1) this device may not cause harmful interference, and (2) this device must accept any interference received, including interference that may cause undesired operation.

Changes or modifications not expressly approved by the party responsible for compliance could void the user's authority to operate the equipment.

NOTE: This equipment has been tested and found to comply with the limits for a Class B digital device, pursuant to Part 15 of the FCC Rules. These limits are designed to provide reasonable protection against harmful interference in a residential installation. This equipment generates, uses and can radiate radio frequency energy and, if not installed and used in accordance with the instructions, may cause harmful interference to radio communications. However, there is no guarantee that interference will not occur in a particular installation. If this equipment does cause harmful interference to radio or television reception, which can be determined by turning the equipment off and on, the user is encouraged to try to correct the interference by one or more of the following measures:

- Reorient or relocate the receiving antenna.
- Increase the separation between the equipment and receiver.
- Connect the equipment into an outlet on a circuit different from that to which the receiver is connected.
- Consult the dealer or an experienced radio/TV technician for help.

IC Caution:

English:

This device contains licence-exempt transmitter(s)/receiver(s) that comply with Innovation, Science and Economic Development Canada's licence-exempt RSS(s). Operation is subject to the following two conditions:

1. This device may not cause interference.
2. This device must accept any interference, including interference that may cause undesired operation of the device.

French:

L'émetteur/récepteur exempt de licence contenu dans le présent appareil est conforme aux CNR d'Innovation, Sciences et Développement économique Canada applicables aux appareils radio exempts de licence. L'exploitation est autorisée aux deux conditions suivantes :

1. L'appareil ne doit pas produire de brouillage;
2. L'appareil doit accepter tout brouillage radioélectrique subi, même si le brouillage est susceptible d'en compromettre le fonctionnement.

To maintain compliance with RF Exposure guidelines, This equipment should be installed and operated with minimum distance between 20cm the radiator your body: Use only the supplied antenna.

FOR FURTHER INFORMATION

www.aurotrap.com

AUROCON
IoT based pest management