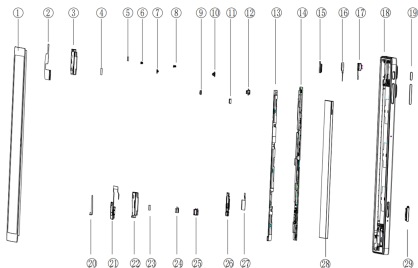


TECNO

TECNO MegaPad 10

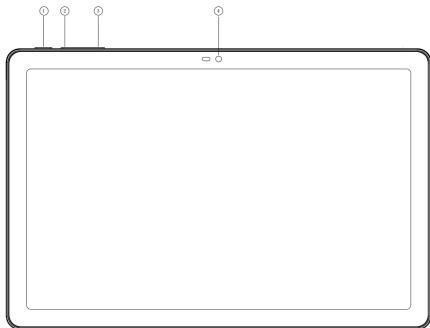
User Manual

Exploded diagram specification



1	TP	2	LCD_FPC
3	L_SPK-BOX	4	mylar
5	CONDUCTIVE_SPONGE	6	screw-1
7	screw-2	8	screw-3
9	FRONT_CAM_RUBBER	10	MIC_RUBBER
11	ALS_RUBBER	12	FRONT_CAM
13	ANT_BRACKET	14	PCBA
15	REAL_CAM_STEEL	16	MOTOR
17	REAR_CAM	18	BACK_HOUSING
19	KEY	20	HEADSET_PORON
21	HEADSET_FPC	22	R_SPK-BOX
23	CONDUCTIVE_SPONGE-2	24	USB_STEEL
25	USB_RUBBER	26	USB-PCBA
27	USB-PCBA-FPC	28	BATTERY
29	CATO		

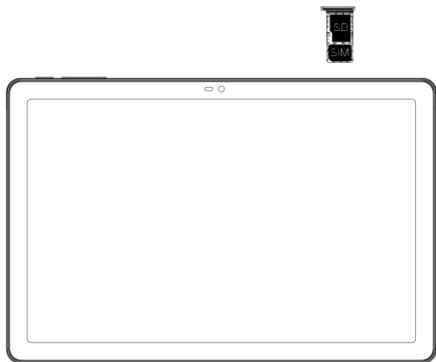
Know your tablet



1. Power button
2. Volume + button
3. Volume - button
4. Front camera

SIM/SD card installation

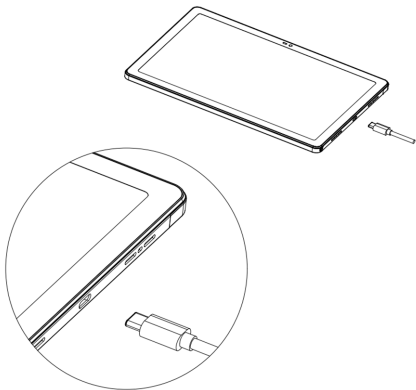
1. Power off tablet.
2. Refer to the following picture for SIM/SD card installation.



Charging the tablet

You can charge your tablet with a charger or by connecting it to a computer using a USB cable (comes with the tablet).

Use only TECNO chargers and cables. Other chargers or cables may damage the tablet and invalidate its warranty.



FCC Caution

Labelling requirements.

This device complies with Part 15 of the FCC Rules. Operation is subject to the following two conditions:

- (1) This device may not cause harmful interference.
- (2) This device must accept any interference received, including interference that may cause undesired operation.

Information to user.

Any changes or modifications not expressly approved by the party responsible for compliance could void the user's authority to operate the device.

Information to the user.

Note: This device has been tested and found to comply with the limits for a Class B digital device, pursuant to part 15 of the FCC Rules. These limits are designed to provide reasonable protection against harmful interference in a residential installation. This device generates, uses and may radiate radio frequency energy and, if not installed and used in accordance with the instructions, may cause harmful interference to radio communications. However, there is no guarantee that interference will not occur in a particular installation. If this device does cause harmful interference to radio or television reception (able to be determined by turning the device off and on), the user is encouraged to try to correct the interference by one or more of the following measures:

- Reorient or relocate the receiving antenna.
- Increase the separation between the device and receiver.
- Connect the device to an outlet on a circuit different from that to which the receiver is connected.
- Consult the dealer or an experienced radio/TV technician for help.

Specific Absorption Rate (SAR) information:

This tablet meets the government's requirements for exposure to radio waves. The guidelines are based on standards developed by independent scientific organizations through periodic and thorough evaluation of scientific studies. The

standards include a substantial safety margin designed to assure the safety of all persons regardless of age or health. FCC RF Exposure Information and Statement. The SAR limit of USA (FCC) is 1.6 W/kg averaged over one gram of tissue. Device types: T1001 (FCC ID:2ADYY-T1001) has also been tested against this SAR limit. The highest SAR value reported under this standard during product certification for use at the body is 1.19 W/kg.

Dolby, Dolby Atmos, and the double-D symbol are registered trademarks of Dolby Laboratories Licensing Corporation. Manufactured under license from Dolby Laboratories. Confidential unpublished works. Copyright © 2012-2023 Dolby Laboratories. All rights reserved.

TECNO

HiOS runs on Android™ OS.
Android is a trademark of Google LLC.