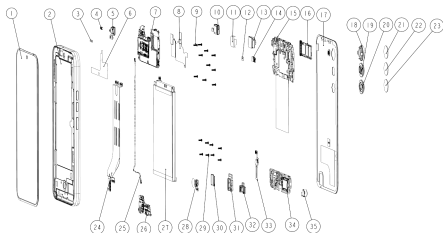


**TECNO**

# **TECNO SPARK 40 Pro**

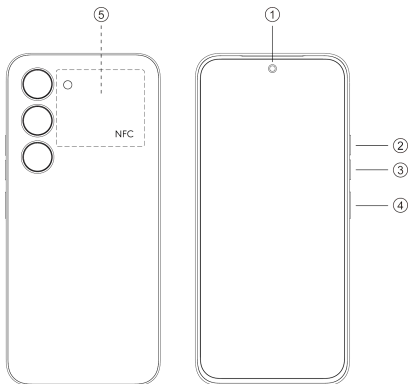
## User Manual

# Exploded diagram specification



1	TP+LCM	2	MIDDLE FRAME
3	SHIELD CON FOAM	4	PS RUBBER
5	13M FRONT CAMERA	6	MAIN BOARD CU FOIL
7	MAIN BOARD	8	MAIN BOARD GRAPHITE
9	SCREW M1.4*L3.5*D2.5	10	RECEIVER
11	REAR MAIN CAM CU FOIL	12	REAR VIVE CAM SUPP FOAM
13	50M CAMERA	14	FF CAMERA
15	UP FRAME	16	SIM CARD HOLDER
17	BATTERY COVER	18	REAR MAIN CAM DECO
19	REAR VICE CAM DECO	20	INFRARED LED CAM DECO
21	MAIN CAM LENS	22	VICE CAM LENS
23	INFRARED LED CAM LENS	24	MAIN FPC
25	RF LINE	26	SUB BOARD
27	BATTERY	28	OPTICAL FINGERPRINT
29	SCREW M1.4*L3.0*D2.5	30	LCM&FPC RUBBER
31	AUDIO JACK RUBBER	32	USB RUBBER
33	IR LED FPCA	34	SPK FRAME
35	MOTOR		

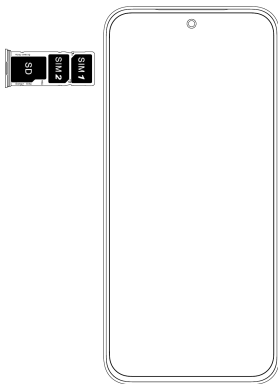
# Know your phone



1. Front camera
2. Volume + button
3. Volume - button
4. Power button
5. NFC

# SIM/SD card installation

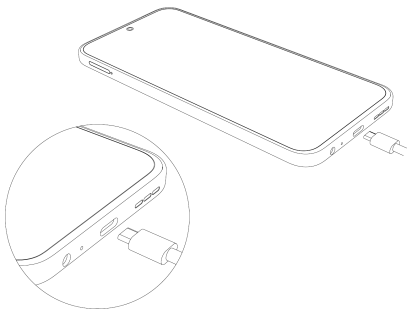
1. Power off your phone.
2. Refer to the following picture for SIM/SD card installation.



# Charging the phone

You can charge your phone with a charger or by connecting it to a computer using a USB cable (comes with the phone).

Use only TECNO chargers and cables. Other chargers or cables may damage the phone and invalidate its warranty.



# FCC Caution

## **Labelling requirements.**

This device complies with Part 15 of the FCC Rules. Operation is subject to the condition that this device does not cause harmful interference.

## **Information to user.**

Any changes or modifications not expressly approved by the party responsible for compliance could void the user's authority to operate the device.

## **Information to the user.**

Note: This device has been tested and found to comply with the limits for a Class B digital device, pursuant to part 15 of the FCC Rules. These limits are designed to provide reasonable protection against harmful interference in a residential installation. This device generates, uses and may radiate radio frequency energy and, if not installed and used in accordance with the instructions, may cause harmful interference to radio communications. However, there is no guarantee that interference will not occur in a particular installation. If this device does cause harmful interference to radio or television reception (able to be determined by turning the device off and on), the user is encouraged to try to correct the interference by one or more of the following measures:

- Reorient or relocate the receiving antenna.
- Increase the separation between the device and receiver.
- Connect the device to an outlet on a circuit different from that to which the receiver is connected.
- Consult the dealer or an experienced radio/TV technician for help.

## **Specific Absorption Rate (SAR) information:**

This mobile phone meets the government's requirements for exposure to radio waves. The guidelines are based on standards developed by independent scientific organizations through periodic and thorough evaluation of scientific studies. The standards include a substantial safety margin designed to

assure the safety of all persons regardless of age or health. FCC RF Exposure Information and Statement. The SAR limit of USA (FCC) is 1.6 W/kg averaged over one gram of tissue. Device types: Mobile Phone (FCC ID: 2ADYY-KM6) has also been tested against this SAR limit. The highest SAR value reported under this standard during product certification for use at the ear is 1.18W/kg and when properly worn on the body is 0.99 W/kg. This device was tested for typical body-worn operations with the back of the handset kept 10mm from the body. To maintain compliance with FCC RF exposure requirements, use accessories that maintain a 10mm separation distance between the user's body and the back of the handset. The use of belt clips, holsters and similar accessories should not contain metallic components in its assembly. The use of accessories that does not satisfy these requirements may not comply with FCC RF exposure requirements, and should be avoided.

### **Body-worn Operation**

This device was tested for typical body-worn operations. To comply with RF exposure requirements, a minimum separation distance of 1.0 cm must be maintained between the user's body and the handset, including the antenna. Third-party belt-clips, holsters, and similar accessories used by this device should not contain any metallic components. Body-worn accessories that do not meet these requirements may not comply with RF exposure requirements and should be avoided. Use only the supplied or an approved antenna.

Dolby, Dolby Atmos, and the double-D symbol are registered trademarks of Dolby Laboratories Licensing Corporation. Manufactured under license from Dolby Laboratories. Confidential unpublished works. Copyright © 2012-2024 Dolby Laboratories. All rights reserved.

**TECNO**

HiOS runs on Android™ OS.  
Android is a trademark of Google LLC.