



Feature

- ※ High gain
- ※ Omani-directional
- ※ Wide bandwidth

Application

※ GSM850/900/DCS/PCS/WCDMAB1/B2/B4/B5/B8

LTE B1/B2/B3/B4/B5/B7/B8/B12/B13/B17/B20/B28/B38/B40/B41/B42/B66

NR Mode n1|n3|n5|n7|n8|n12|n20|n28|n66|n38|n40|n41|n71|n77|n78

Name and address of the antenna manufacturer	Model number of the antenna
Dongguan Demen Electronics Co., Ltd 6th Floor, Building D, Dongguan Demen Co., Ltd., Fenghuanggang Industrial Park, No. 1 Fengtai Road, Tangxia Town, Dongguan City, Guangdong Province	CM7-ANT0 CM7-ANT1 CM7-ANT2 CM7-ANT3 CM7-ANT4 CM7-ANT5 CM7-ANT6 CM7-ANT7 CM7-ANT8 CM7-ANT12 CM7-ANT13

Transmitter Frequency	GSM 850/WCDMA B5/LTE B5 NR n5: 824–849 MHz
	GSM 900/WCDMA B8/LTE B8 NR n8: 880–915 MHz
	DCS /WCDMA B4/LTE B3/B4/B66 NR n3/n66: 1710–1785 MHz
	PCS/WCDMA B2/LTE B2:1850-1910MHz
	WCDMA B1/LTE B1 NR n1: 1920 – 1980MHz
	LTE B7 NR n7:2496-2565MHz
	LTE B40 NR n40:2300-2400MHz
	LTE B38/B41 NR n38/n41:2565-2645MHz
	LTE B42: 3400-3600MHz
	LTE B20 NR n20:832-862MHz
	LTE B12/B17/B28 NR n12/n28:710-755MHz
	NR n71:663-698 MHz
	NR n77/n78:3300-4200MHz
Receiver Frequency	GSM 850/WCDMA B5/LTE B5 NR n5: 869–894 MHz
	GSM 900/WCDMA B8/LTE B8 NR n8: 925–960 MHz
	DCS/LTE B3/B66 NR n3/n66: 1805–1880 MHz
	WCDMA 4/LTE B4 NR n4: 2110-2155 MHz
	PCS/WCDMA B2/LTE B2:1930-1990MHz

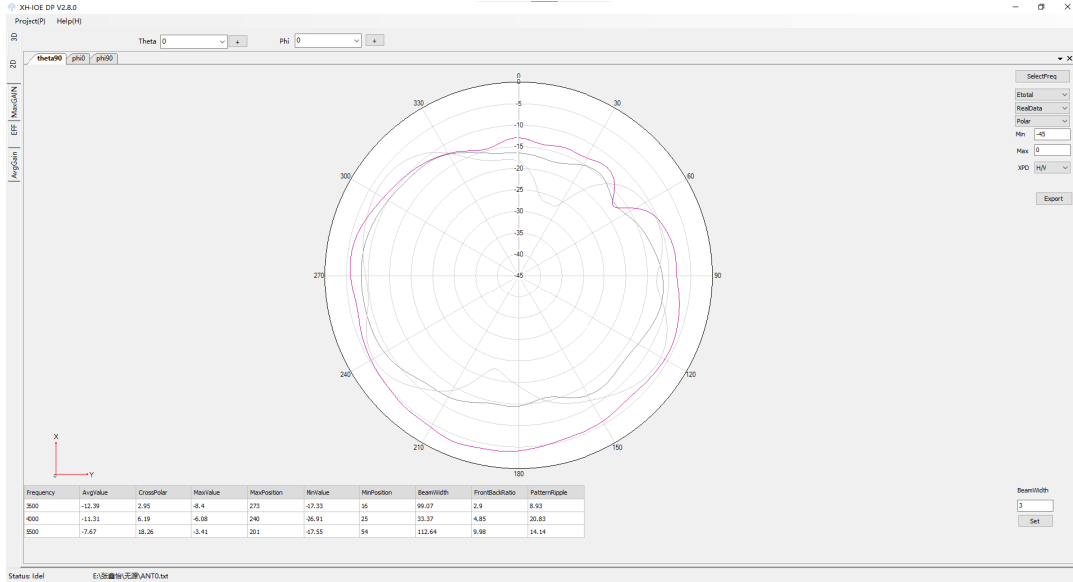
		WCDMA B1/LTE B1 NR n1: 2110 – 2170MHz
		LTE B7 NR n7:2620-2690MHz
		LTE B40 NR n40:2300-2400MHz
		LTE B38/41 NR n38/n41:2565-2645MHz
		LTE B42: 3400-3600MHz
		LTE B20 NR n20:791-821MHz
		LTE B12/B17/B28 NR n12/n28:758-803MHz
		NR n71:617-652 MHz
		NR n77/n78:3300-4200MHz
Antenna Gain	ANT0	NR n77/78: -7.59 dBi
		B42: -7.59 dBi
	ANT12	WIFI5G: -3.08 dBi
		GPS:-2.5 dBi
	ANT13	BT/WIFI2.4G:-3.91 dBi
		BT/WIFI2.4G:-5.16 dBi
	ANT5(ENDC) (Only RX)	B1/B4:-2.85 dBi
		B2:-4.15 dBi
		B3:-4.15 dBi
		B40: -3.01 dBi

		B7/B38/B41: -1.81 dBi
	ANT6	N77/N78: -2 dBi B42:-2 dBi
	ANT7	B1/B4:-2.52 dBi B66:-2.52 dBi NR n66:-2.52 dBi
		B2:-2.51 dBi PCS1900:-2.51 dBi B3:-2.51 dBi DCS:-2.51 dBi
		B40: -3.76 dBi
		B7/B38/B41: -3.49 dBi
		B42/N77/N78:-0.2 dBi
	ANT8	NR n77/n78:-5.04 dBi B42:-5.04 dBi
	ANT2	GSM 850/WCDMA B5/LTE B5/NR n5: -6.08 dBi
		GSM 900/WCDMA B8/LTE B8/NR n8: -7.29 dBi
		LTE B20 NR n20:-6.566 dBi
		LTE B12/B13/B17/B28 NR n12/n28: -3.95 dBi
		LTE B40 NR n40: -6.71 dBi
		LTE B38/41 NR n38/n41: -7.8 dBi

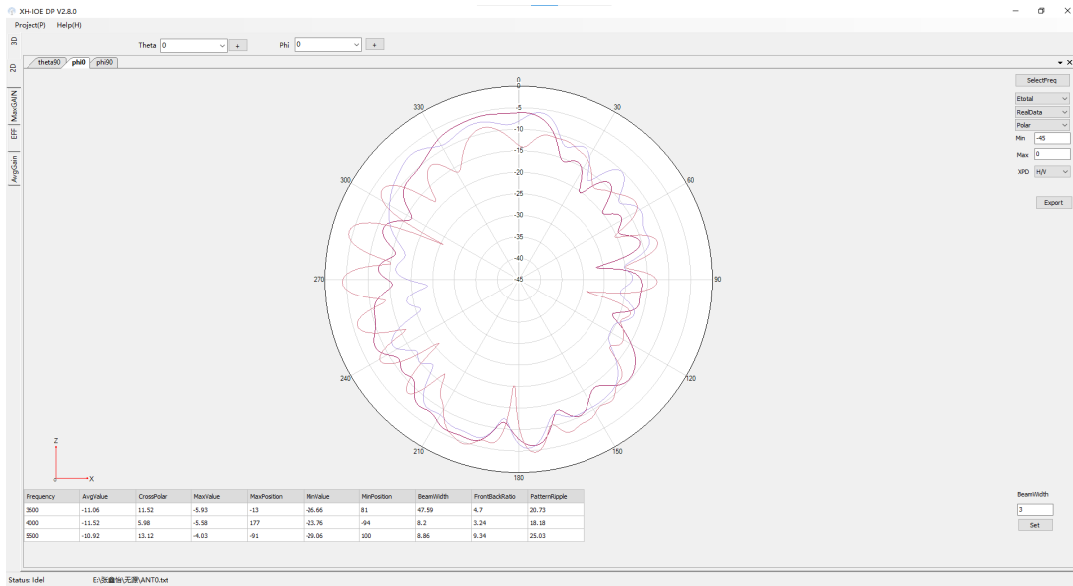
		LTE B7 NR n7: -7.8 dBi
	ANT3	PCS 1900:-3.8 dBi
		WCDMA B1/LTE B1 NR n1:-1.63 dBi
		WCDMA B2/LTE B2 NR n2:-3.8 dBi
		DCS/LTE B3/4 NR n3/n4:-2.6 dBi
		LTE B66 NR n66:-2.6 dBi
		LTE B40 NR n40:-2.45 dBi
		LTE B7/B38/B41 NR n7/n38/n41:-2.5 dBi
		ANT4
	GSM 900/WCDMA B8/LTE B8/NR n8: -8.5 dBi	
	LTE B12/B13/B17/B28 NR n12/n28: -7 dBi	
	LTE B20 NR n20:-7.9 dBi	
	NR n71: -10 dBi	

※ Antenna Gain

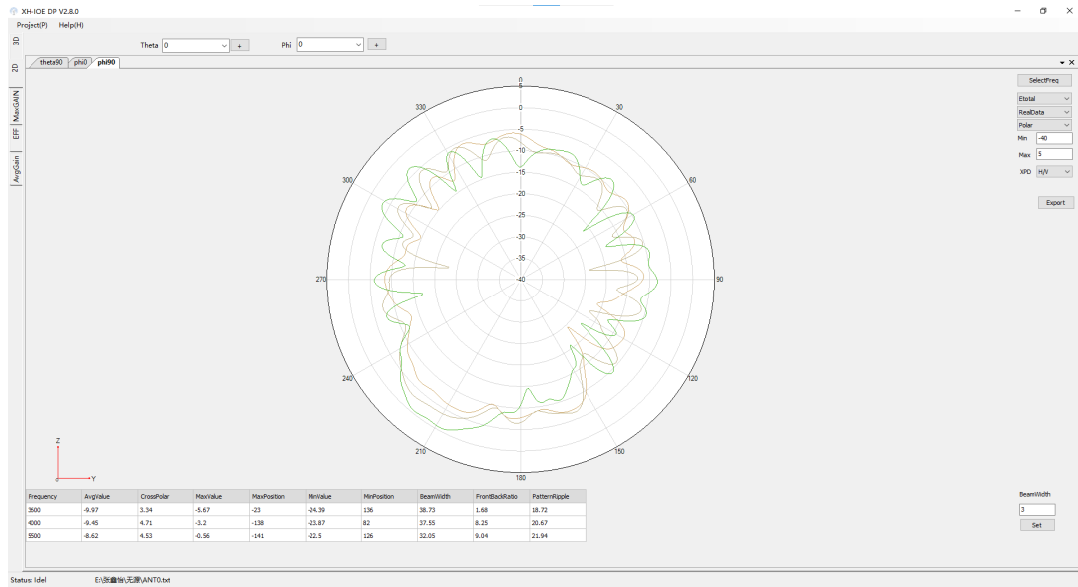
ANT0:



NR n77/78 WIFI5G Theta=90deg

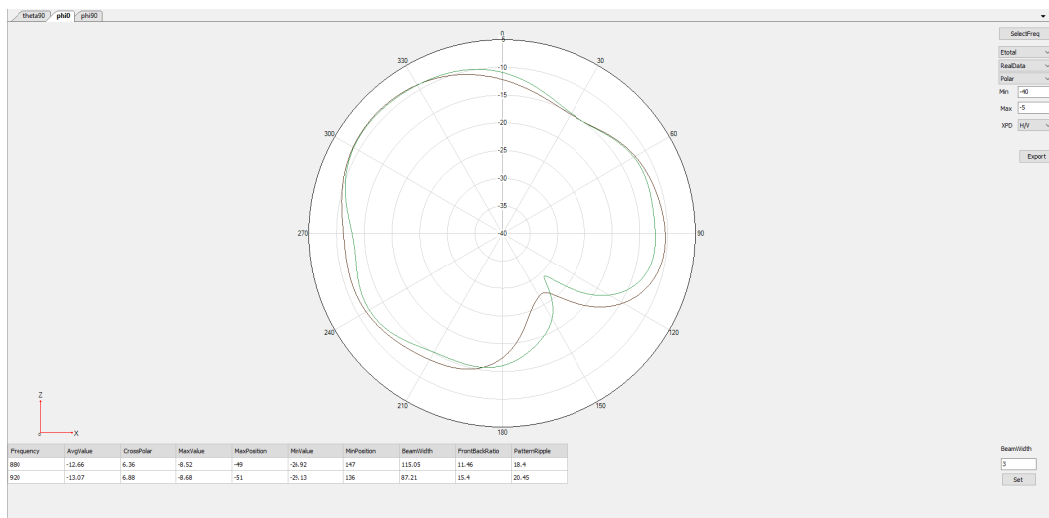


NR n77/78 WIFI5G Phi=0deg

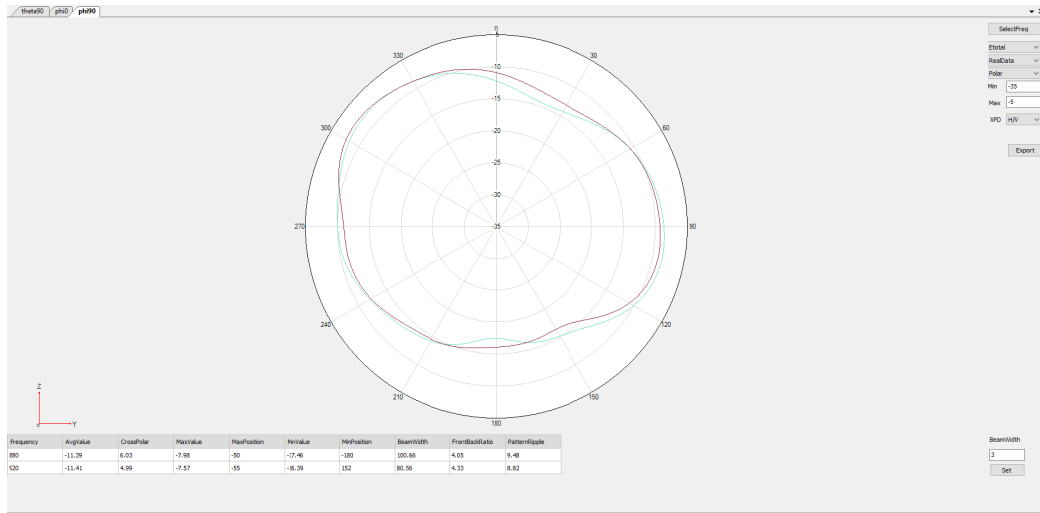


NR n77/78 WiFi5G Phi=90deg

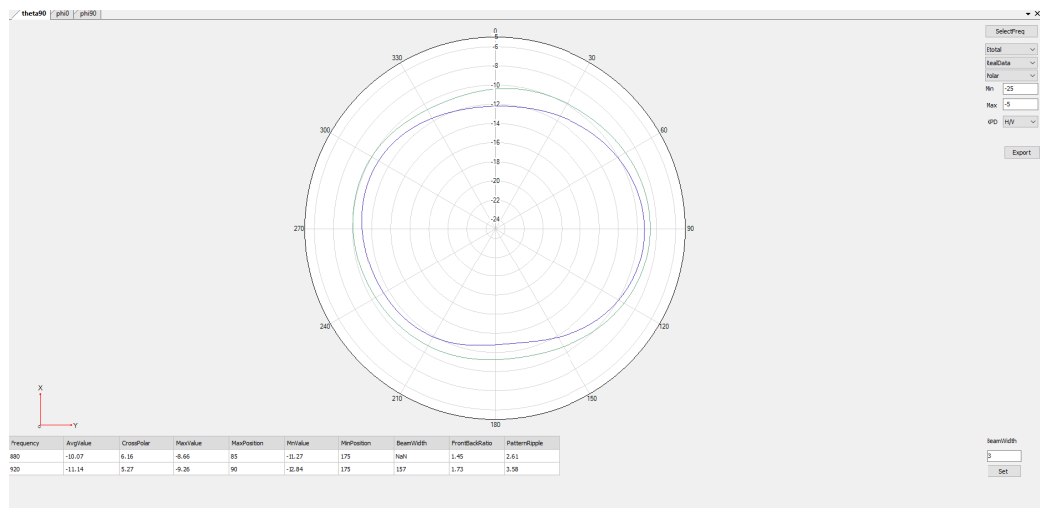
ANT2:



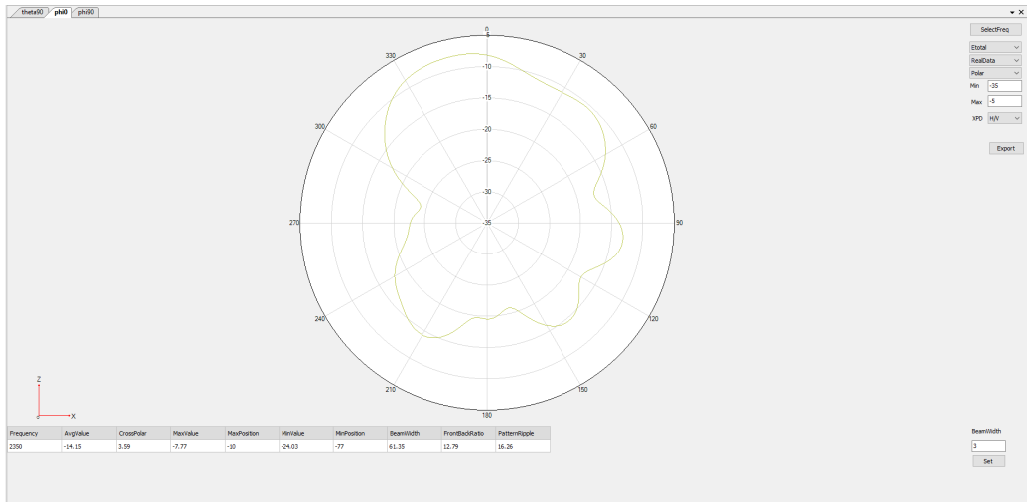
GSM 900/WCDMA B8/LTE B8/NR n8 Phi=0deg



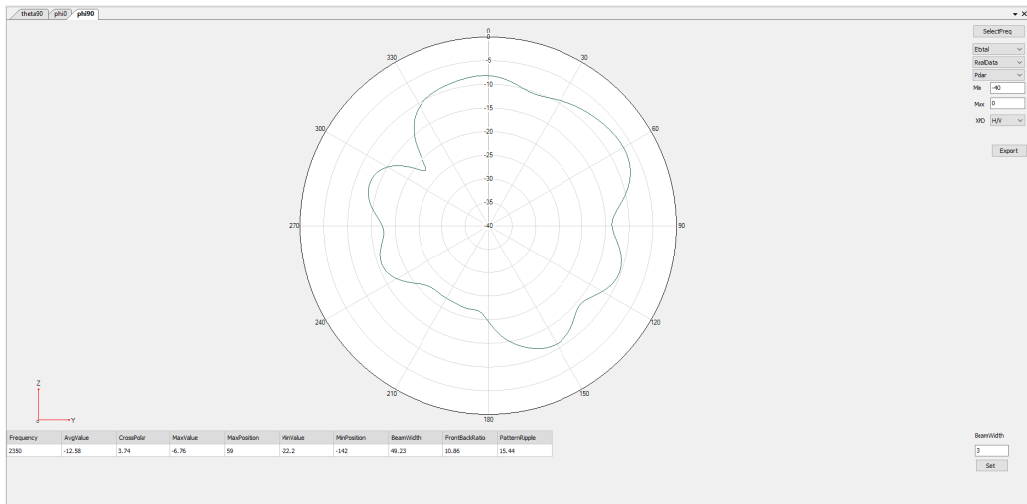
GSM 900/WCDMA B8/LTE B8/NR n8 Phi=90deg



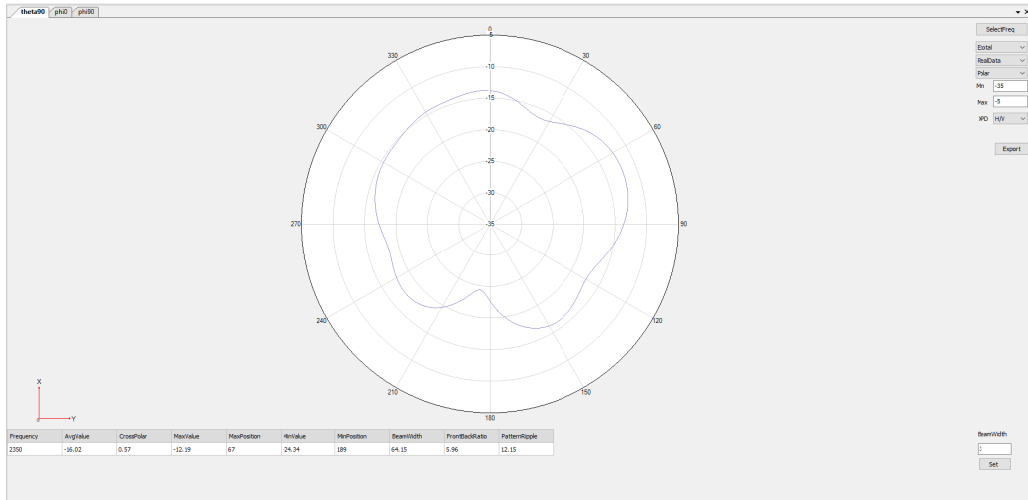
GSM 900/WCDMA B8/LTE B8/NR n8 Theta=90deg



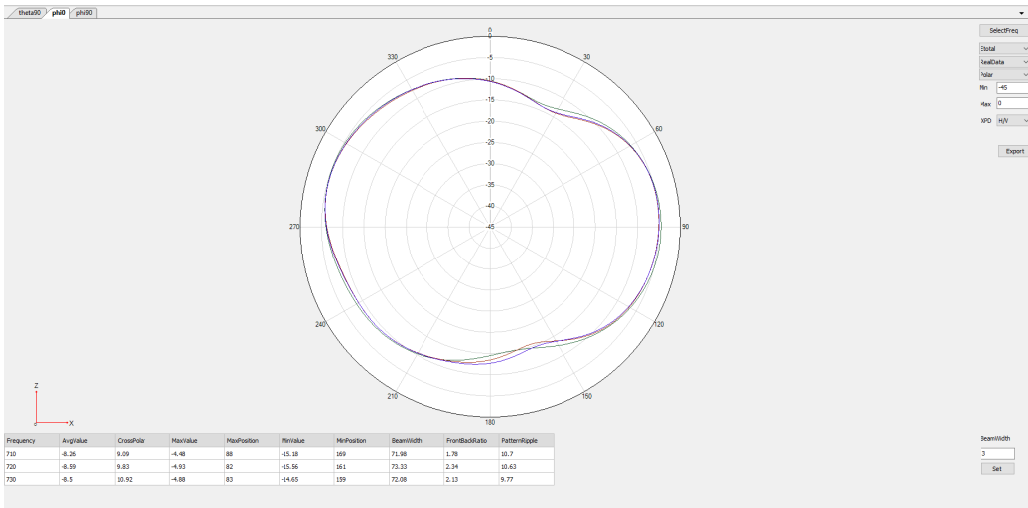
LTE B40 NR n40 Phi=0deg



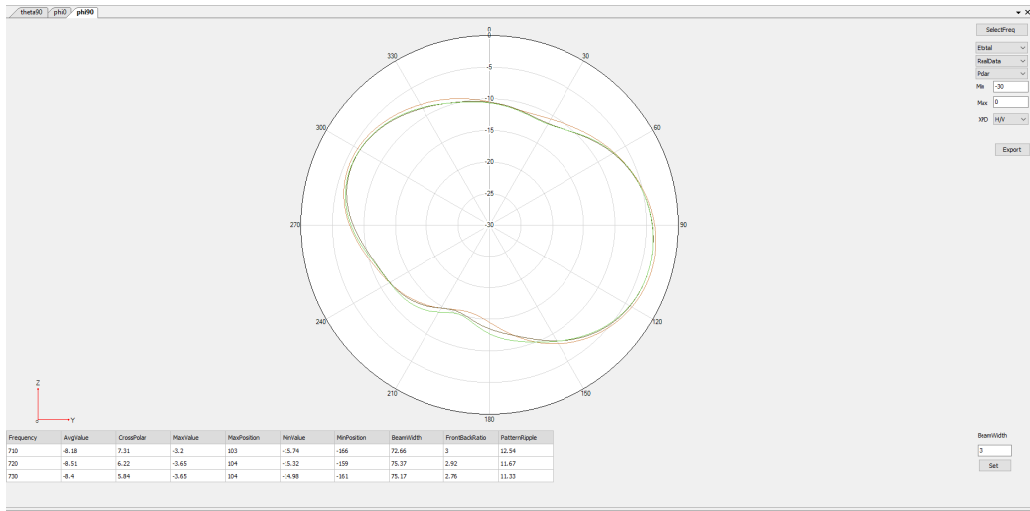
LTE B40 NR n40 Phi=90deg



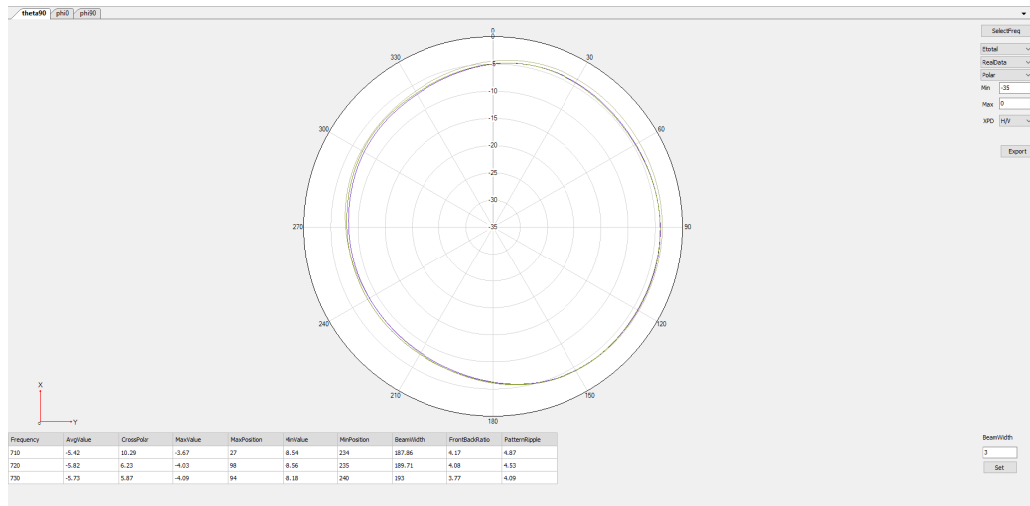
LTE B40 NR n40 Theta=90deg



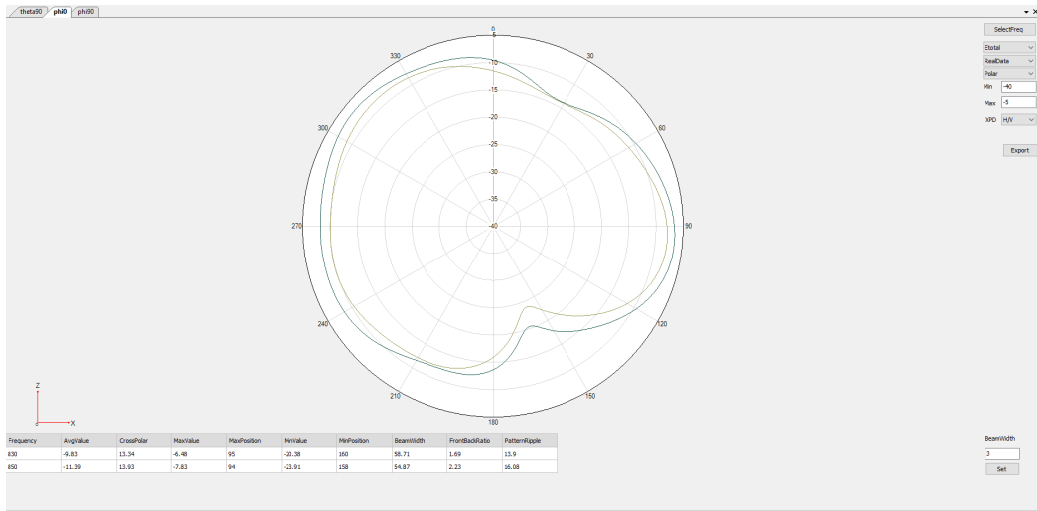
LTE B12/B13/B17/B28 NR n12/n28 Phi=0deg



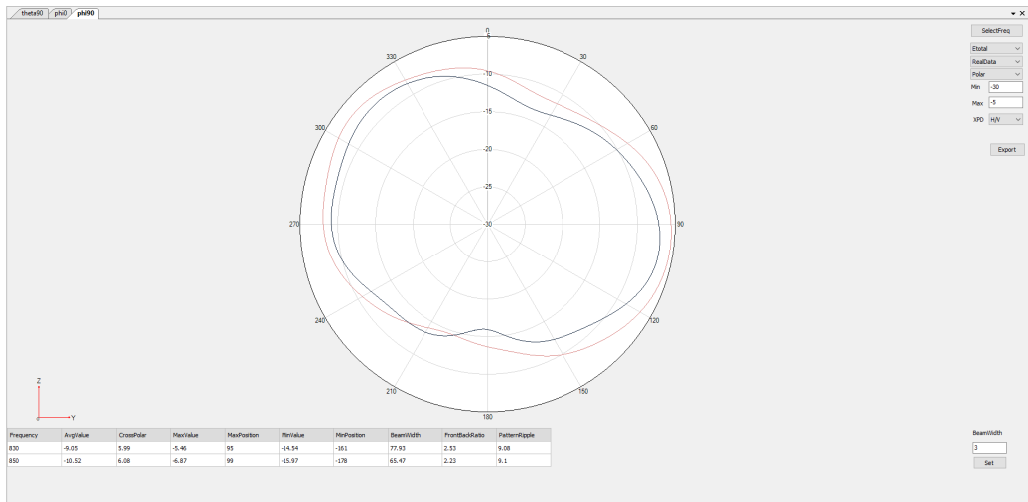
LTE B12/B13/B17/B28 NR n12/n28 Phi=90deg



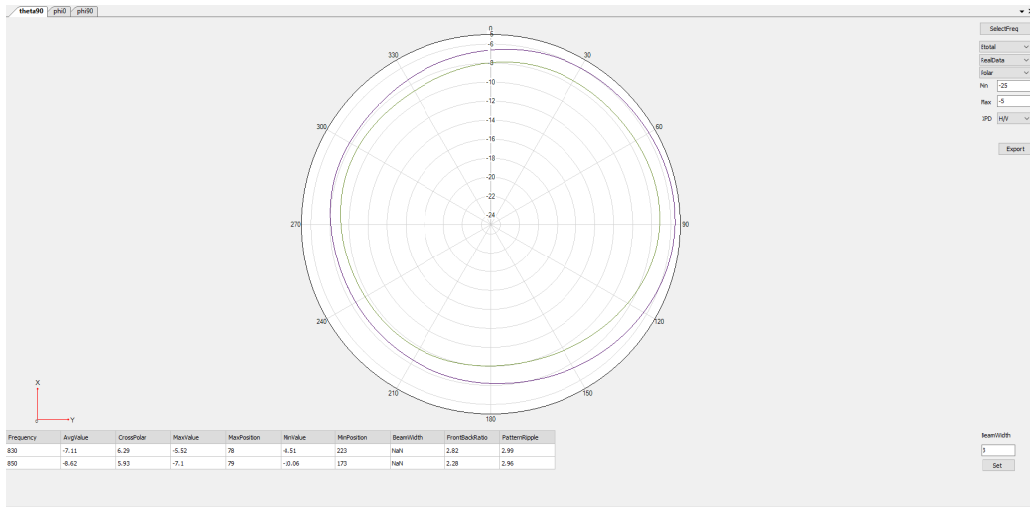
LTE B12/B13/B17/B28 NR n12/n28 Theta=90deg



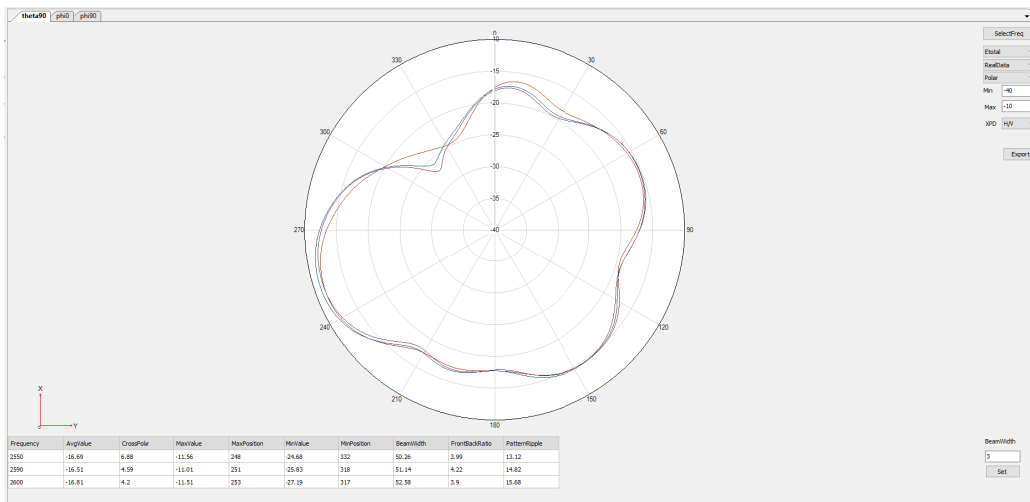
GSM 850 WCDMA B5 LTE B5/20 NR n5/20 Phi=0deg



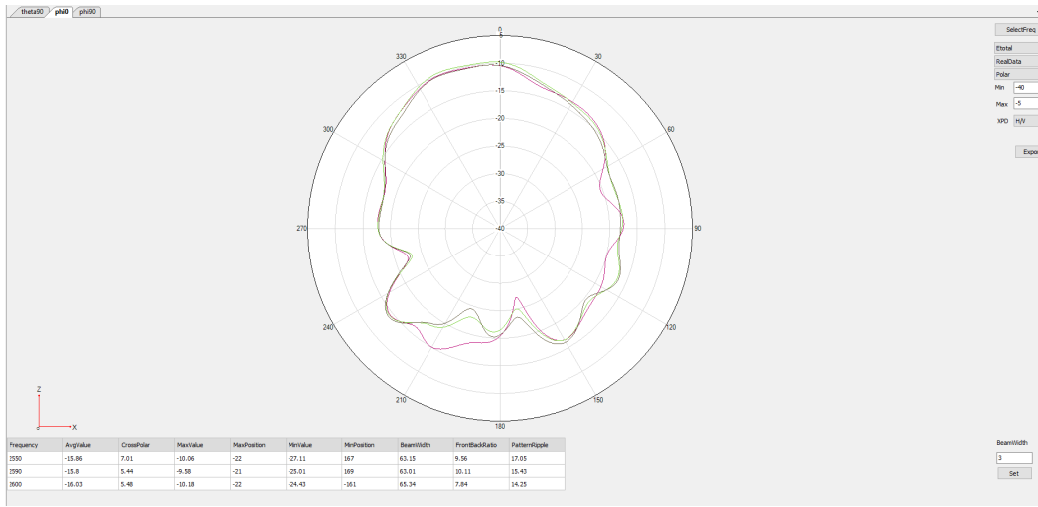
GSM 850 WCDMA B5 LTE B5/20 NR n5/20 Phi=90deg



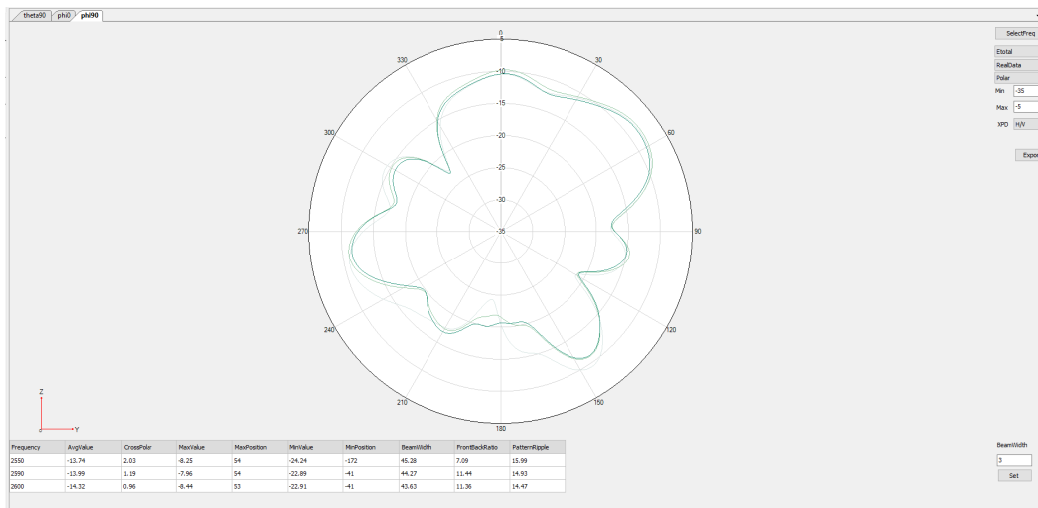
GSM 850 WCDMA B5 LTE B5/20 NR n5/20 Theta=90deg



LTE B7/38/41 NR n7/38/n41 Phi=0deg

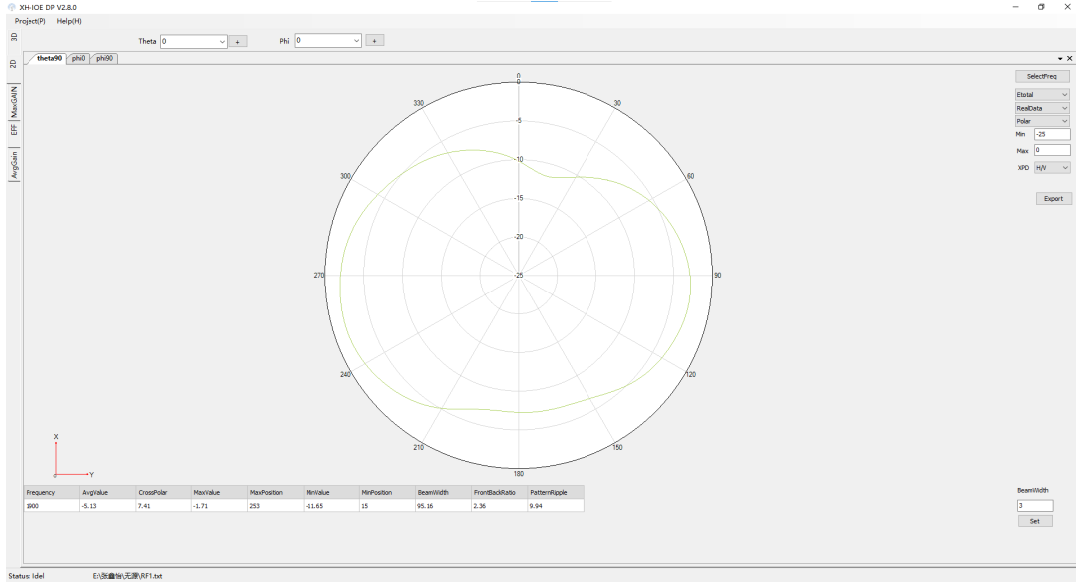


LTE B7/38/41 NR n7/38/n41 Phi=90deg

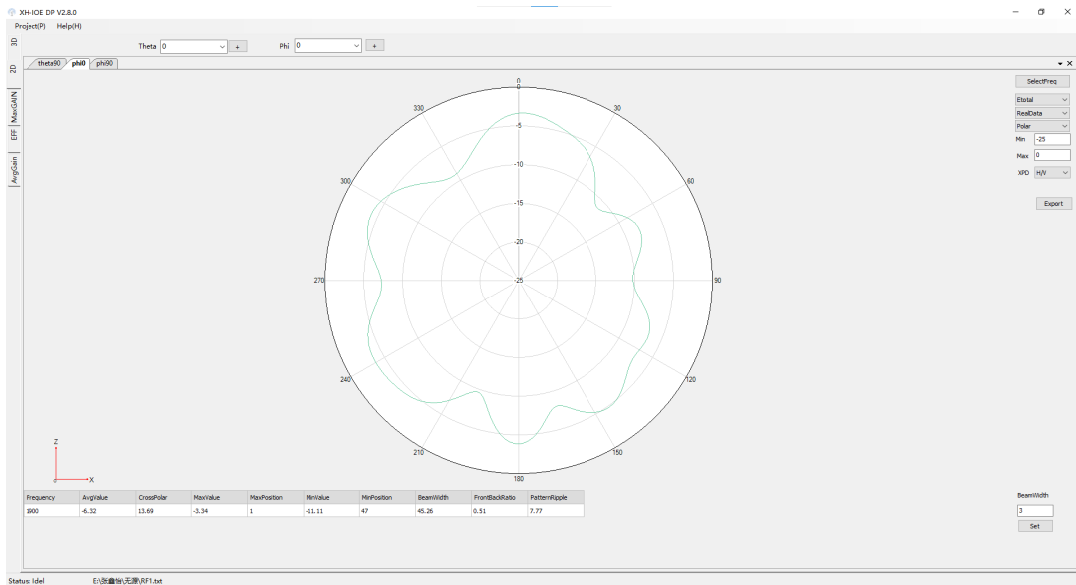


LTE B7/38/41 NR n7/38/n41 Theta=90deg

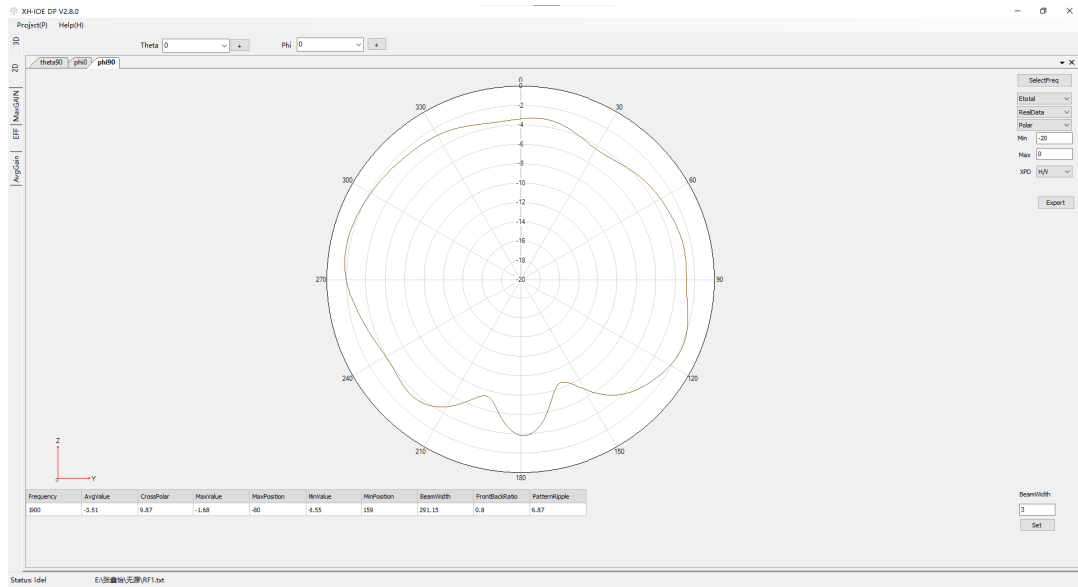
ANT3:



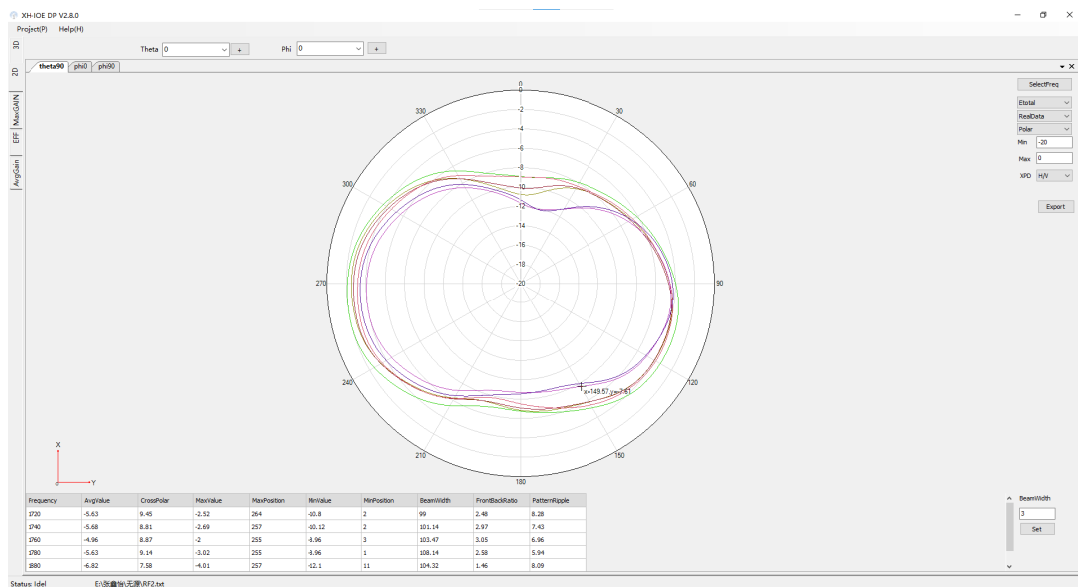
PCS 1900 Theta=90deg



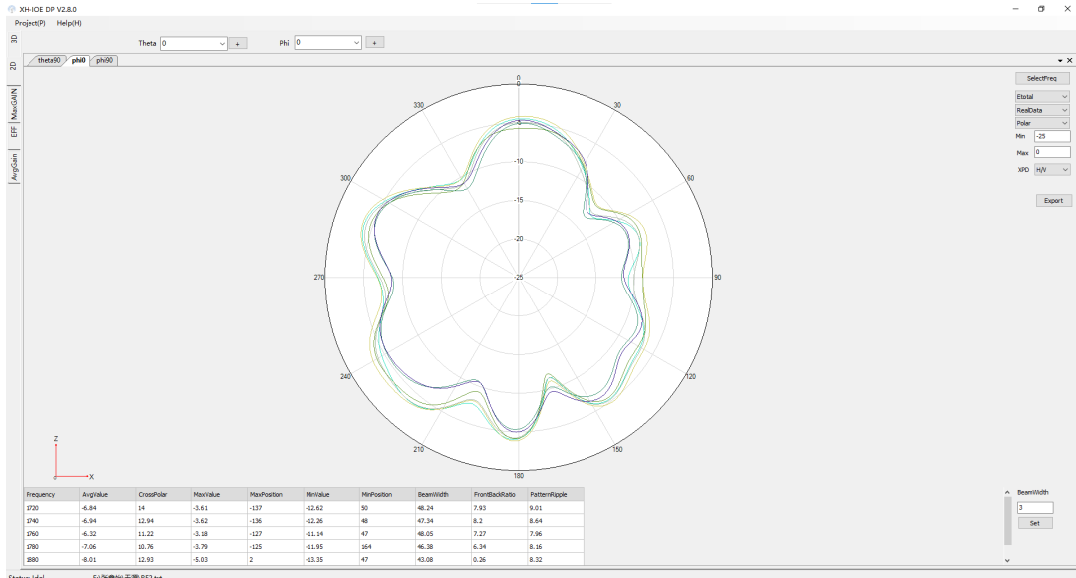
PCS 1900 Phi=0deg



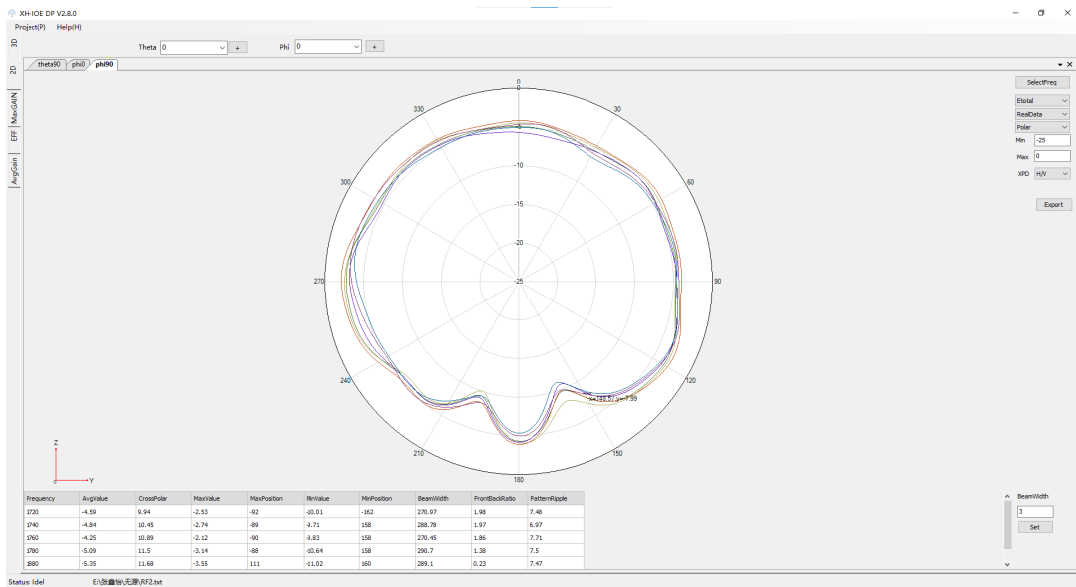
PCS 1900 Phi=90deg



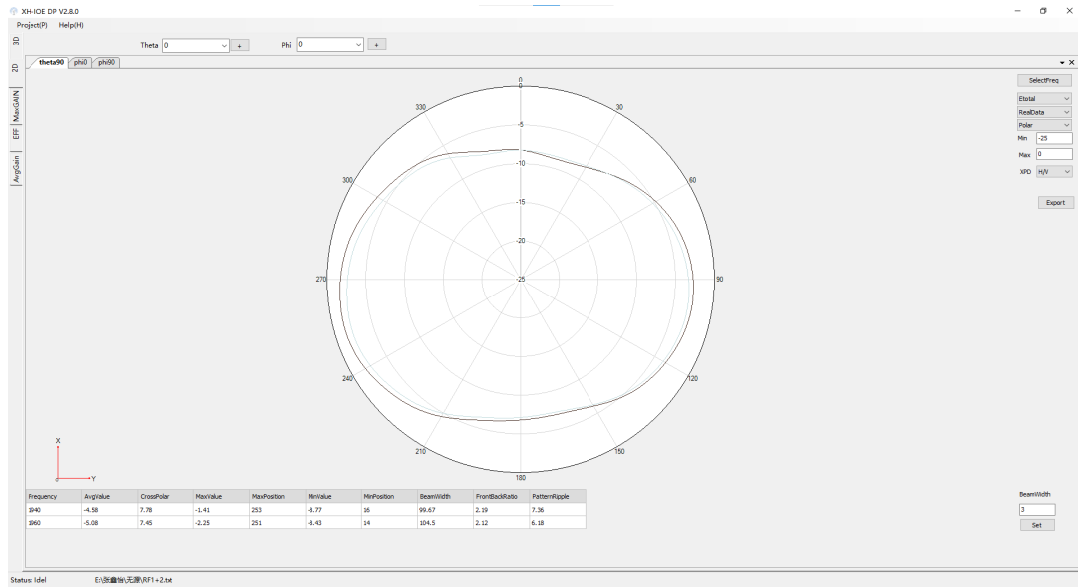
WCDMA2/4 LTE B2/B3/B4/B66 NR n2/n3/n4/n66 Theta=90deg



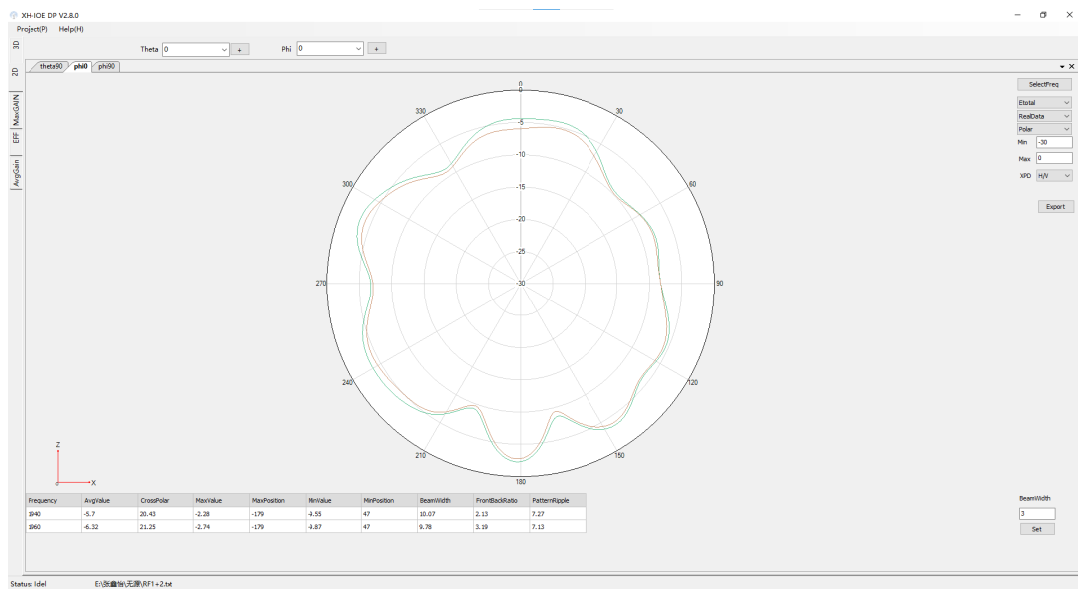
WCDMA2/4 LTE B2/B3/B4/B66 NR n2/n3/n4/n66 Phi=0deg



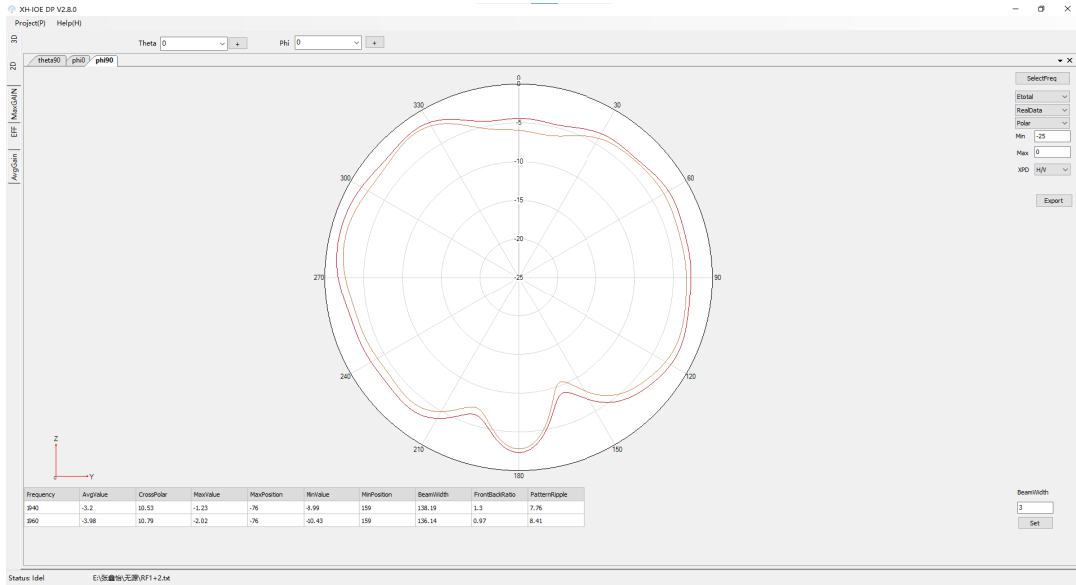
WCDMA2/4 LTE B2/B3/B4/B66 NR n2/n3/n4/n66 Phi=90deg



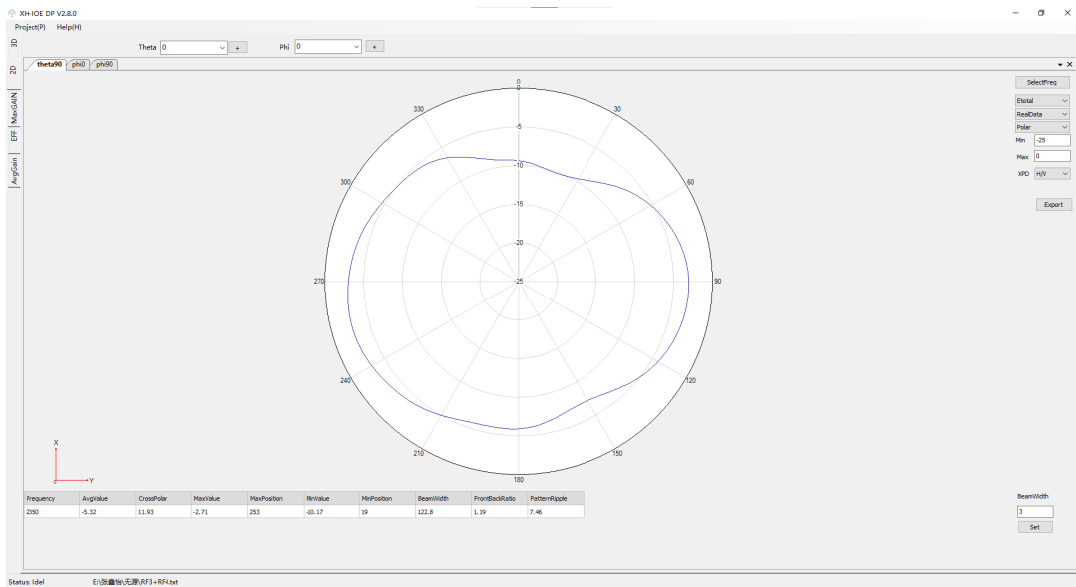
WCDMA1 LTE B1 NR n1 Theta=90deg



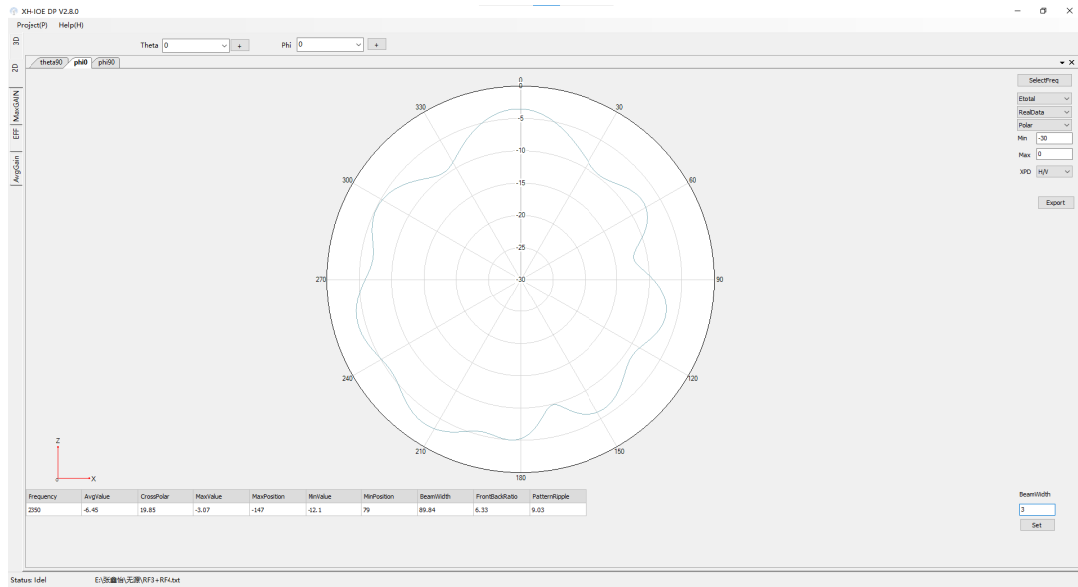
WCDMA1 LTE B1 NR n1 Phi=0deg



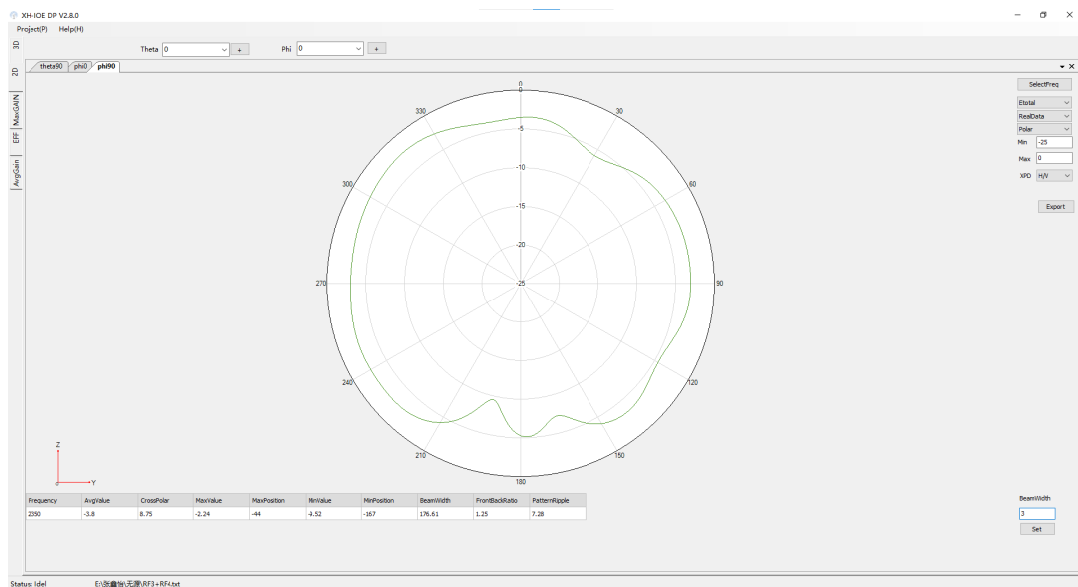
WCDMA1 LTE B1 NR n1 Phi=90deg



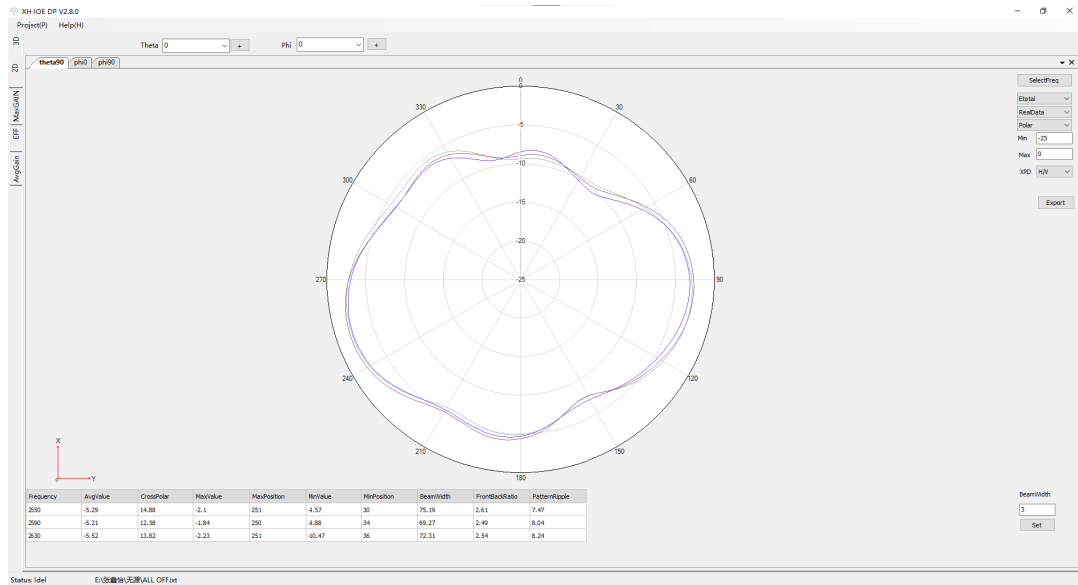
LTE B40 NR n40 Theta=90deg



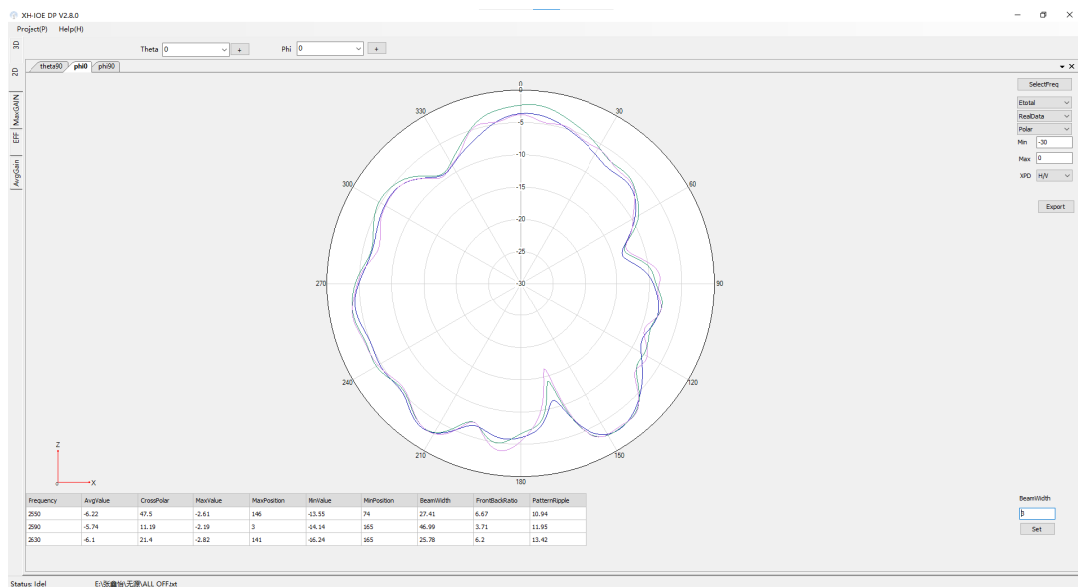
LTE B40 NR n40 Phi=0deg



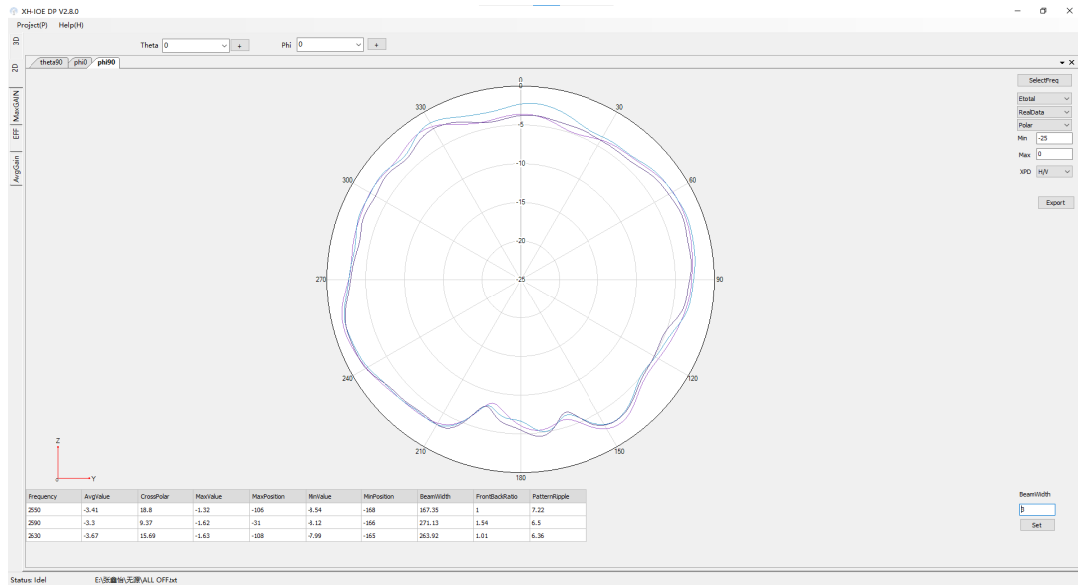
LTE B40 NR n40 Phi=90deg



LTE B7/B38/B41 NR n7/n38/41 Theta=90deg

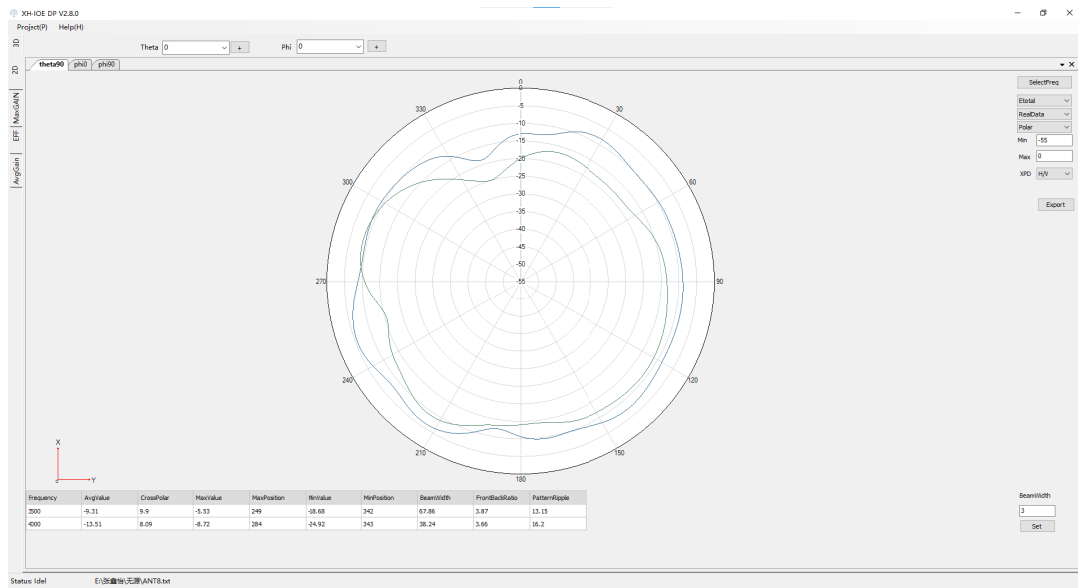


LTE B7/B38/B41 NR n7/n38/41 Phi=0deg

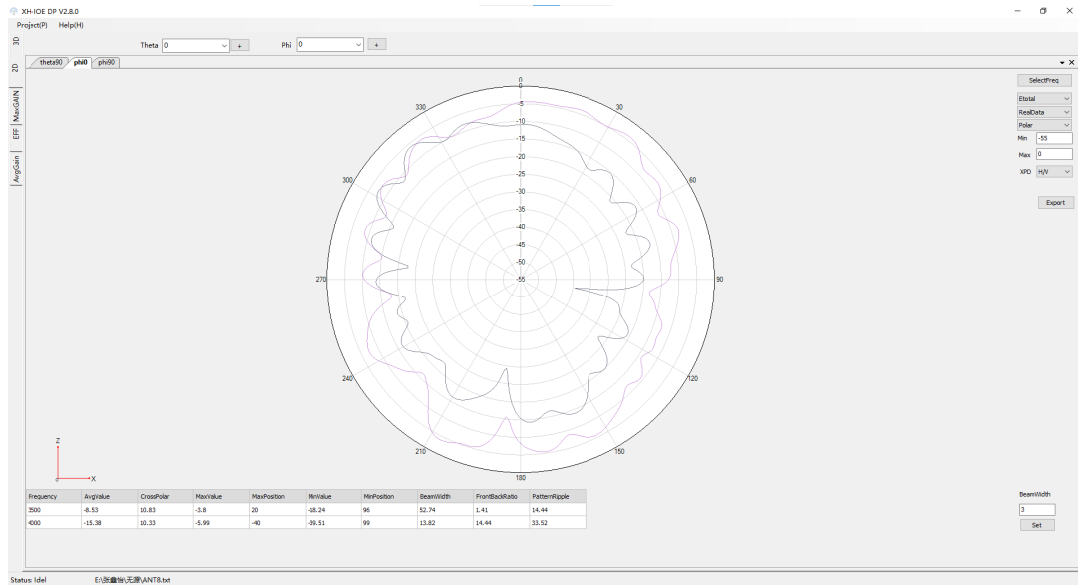


LTE B7/B38/B41 NR n7/n38/41 Phi=90deg

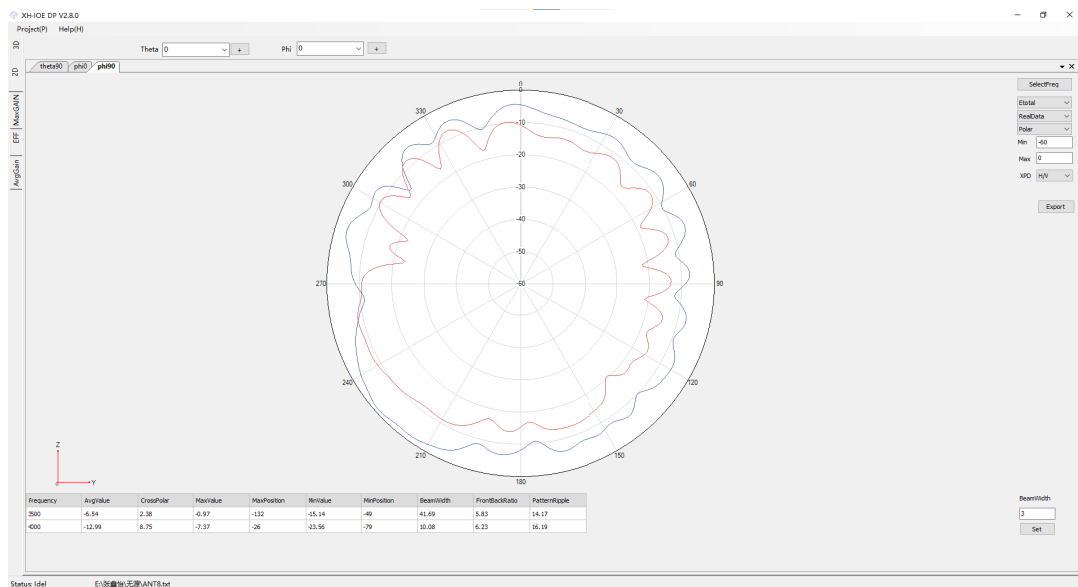
ANT8:



NR n77/n78 Theta=90deg

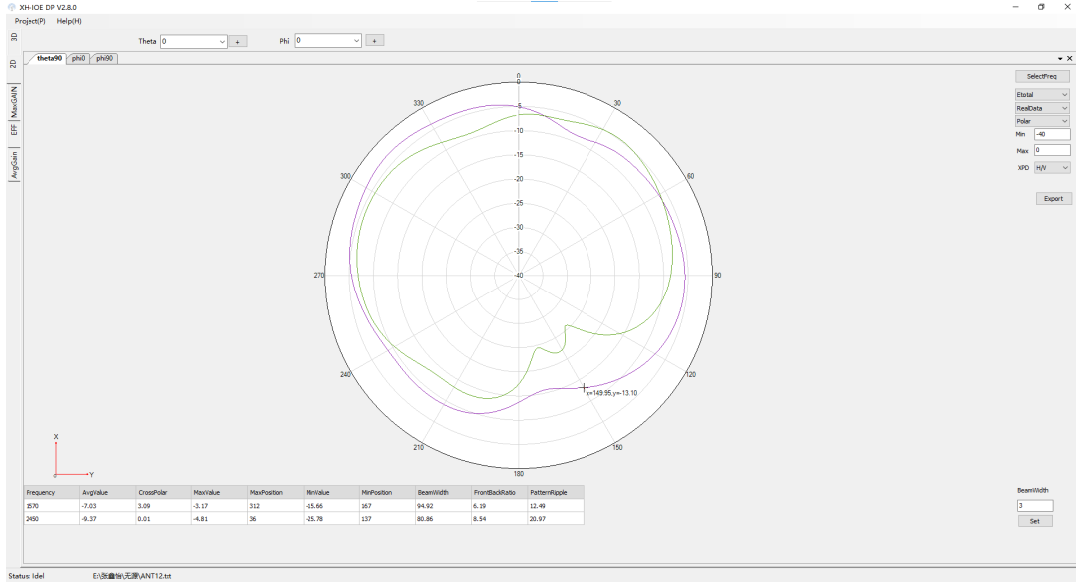


NR n77/n78 Phi=0deg

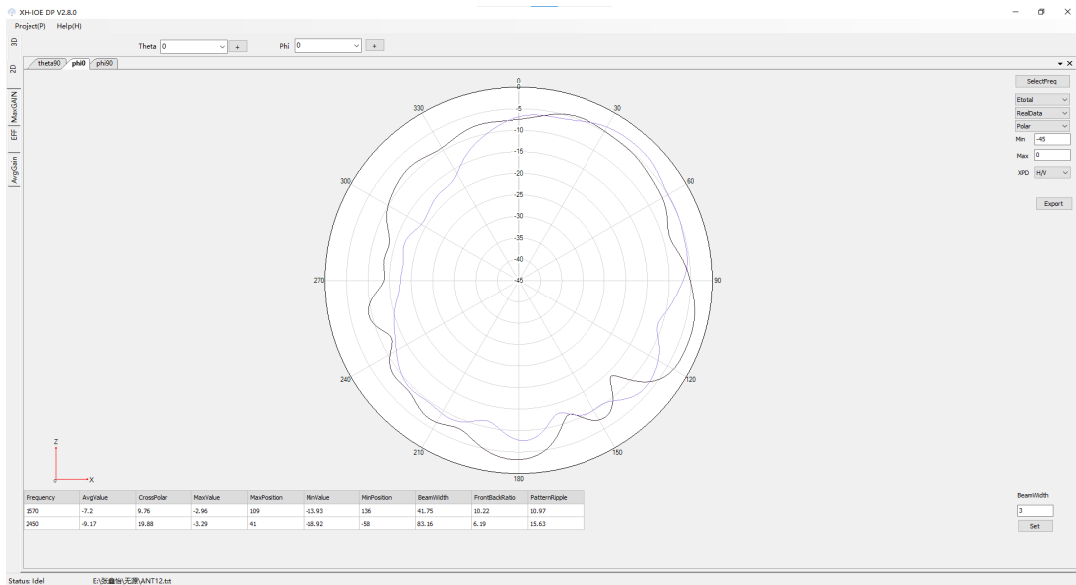


NR n77/n78 Phi=90deg

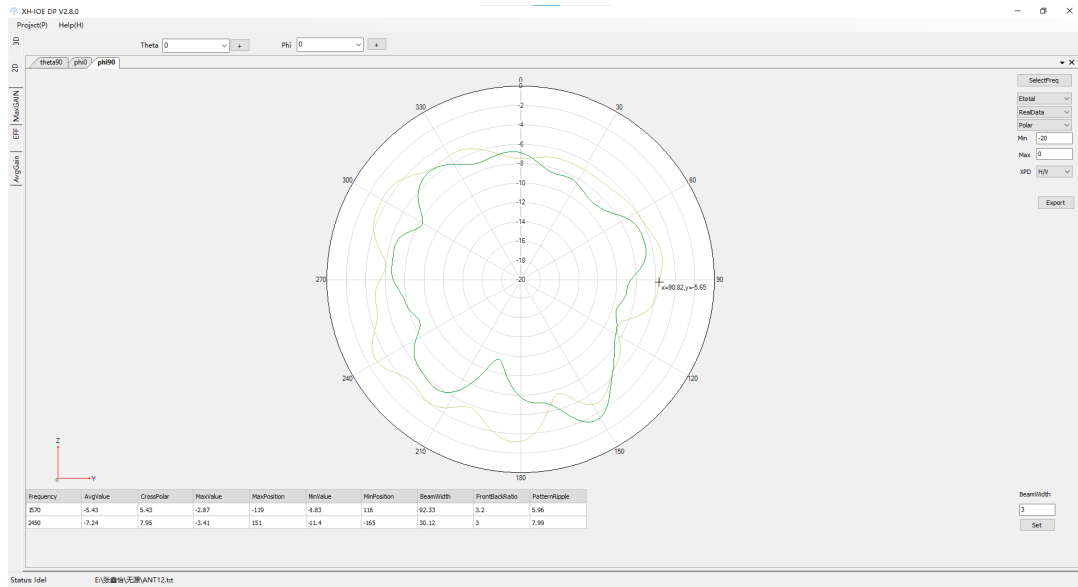
ANT12:



GPS & BT/WIFI2.4G Theta=90deg

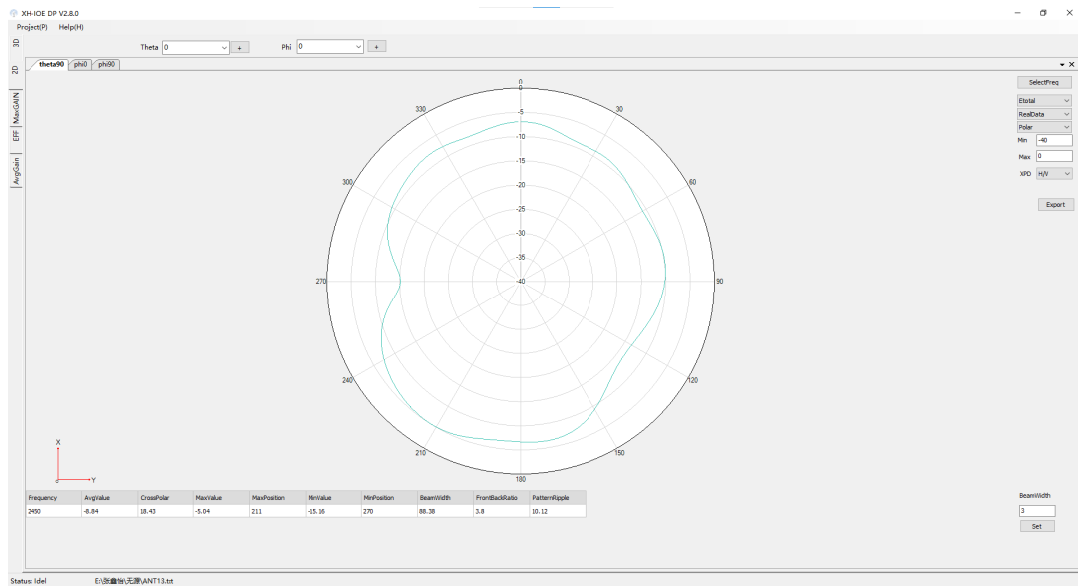


GPS & BT/WIFI2.4G Phi=0deg

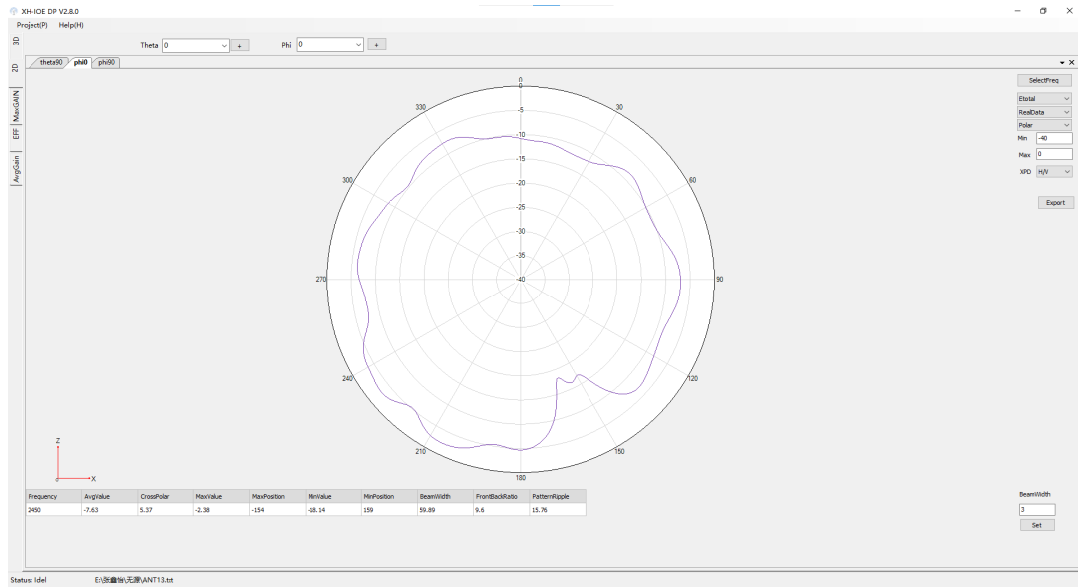


GPS & BT/WIFI2.4G Phi=90deg

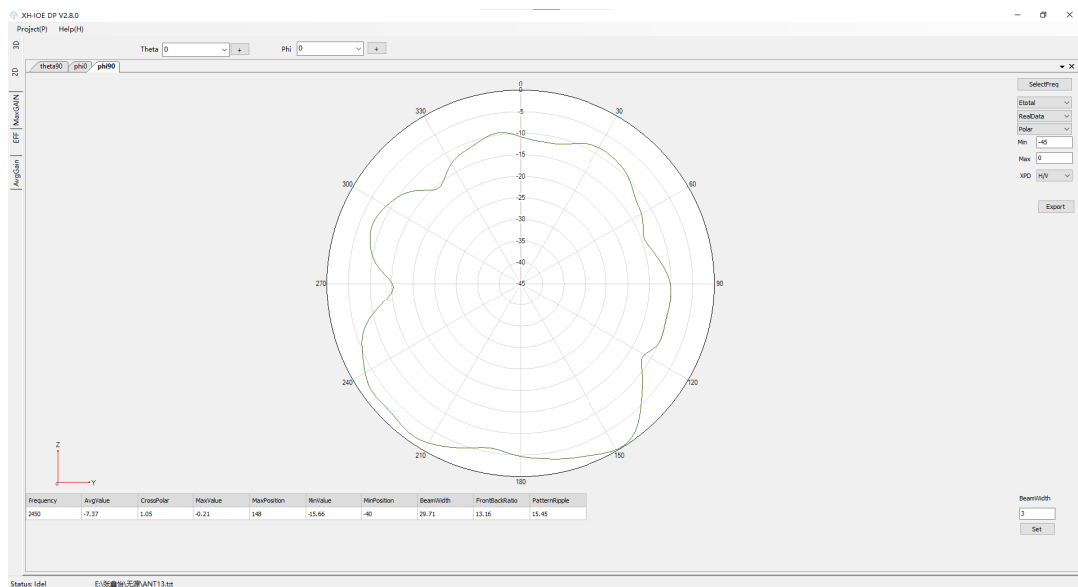
ANT13:



BT/WIFI2.4G Theta=90deg

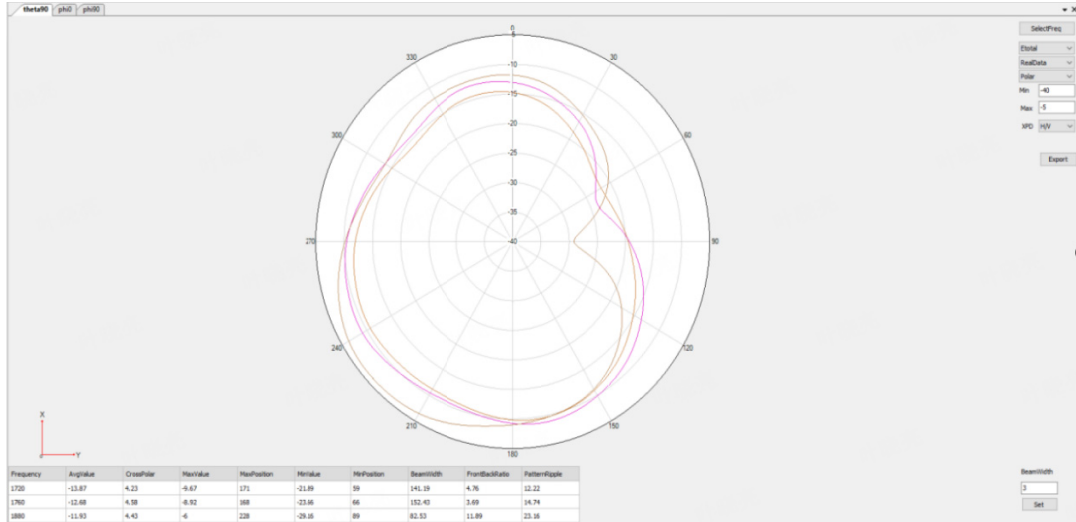


BT/WIFI2.4G Phi=0deg

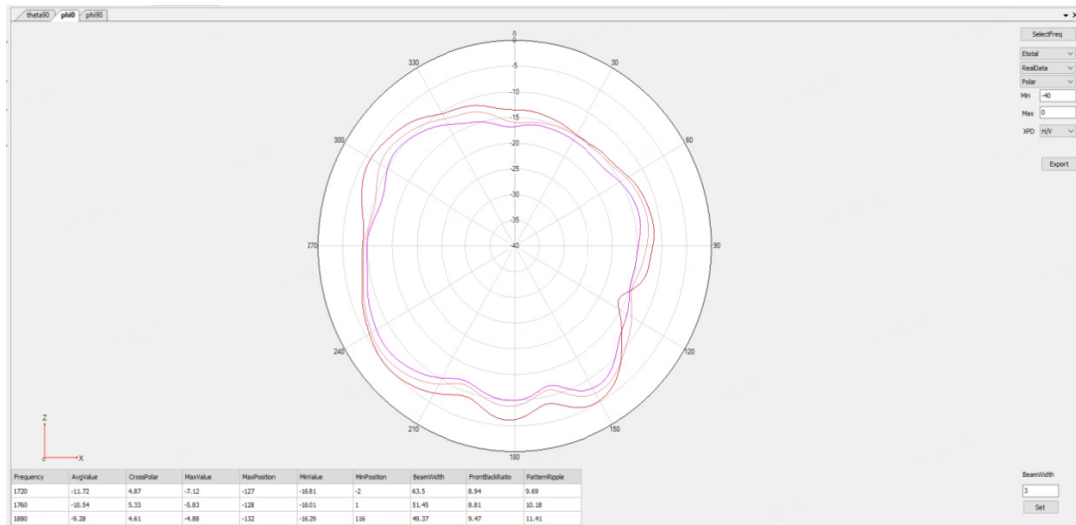


BT/WIFI2.4G Phi=90deg

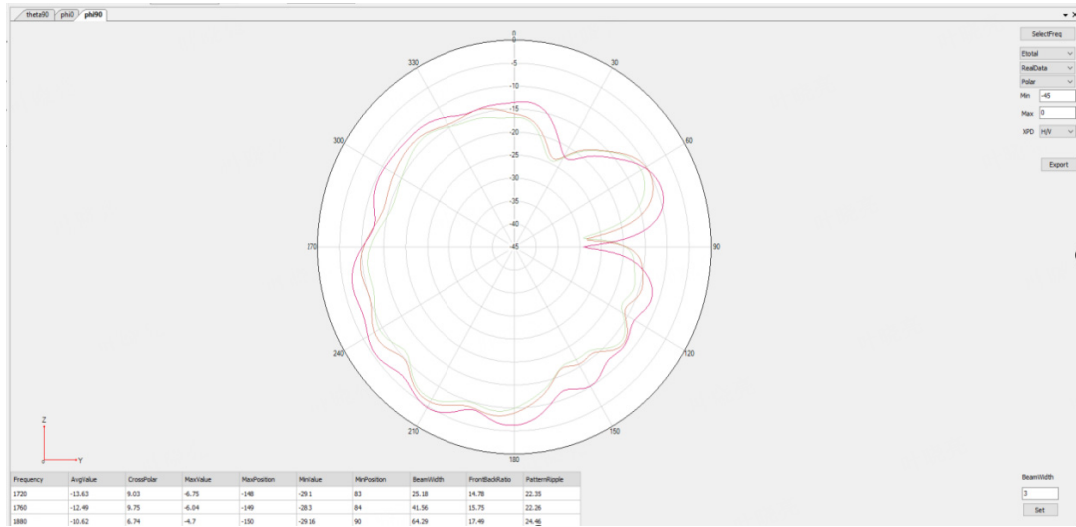
ANT5: MHB



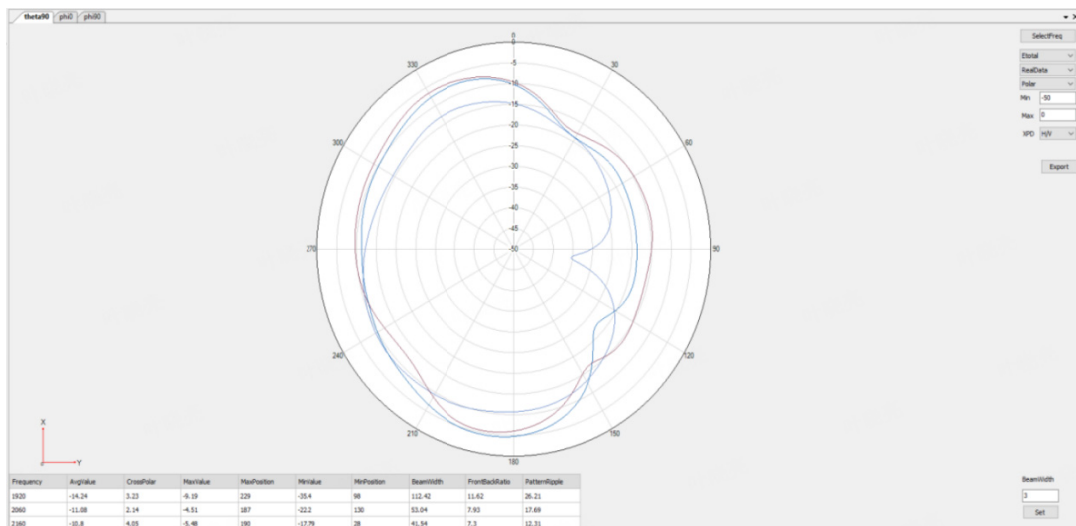
B3/B2 Theta=90deg



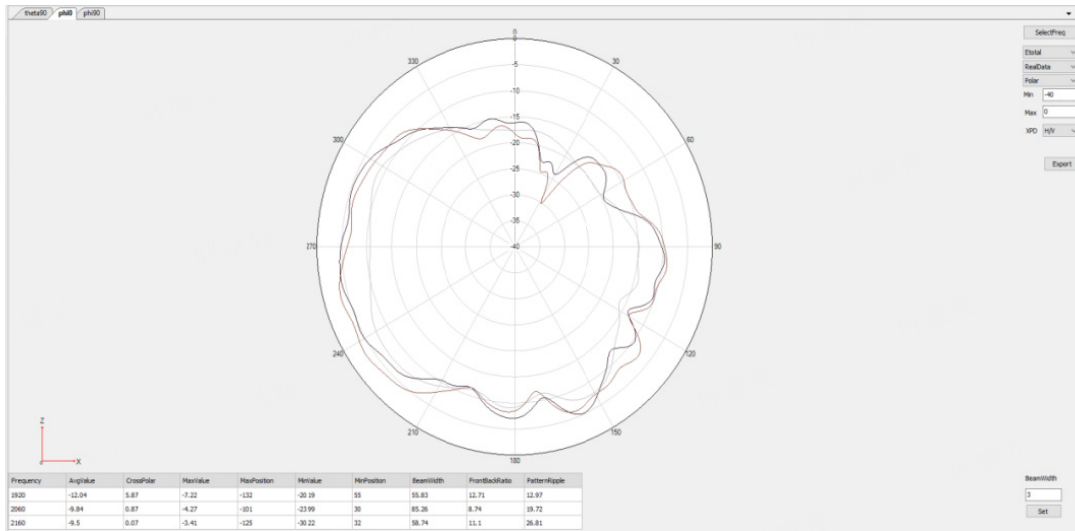
B3/B2 Phi=0deg



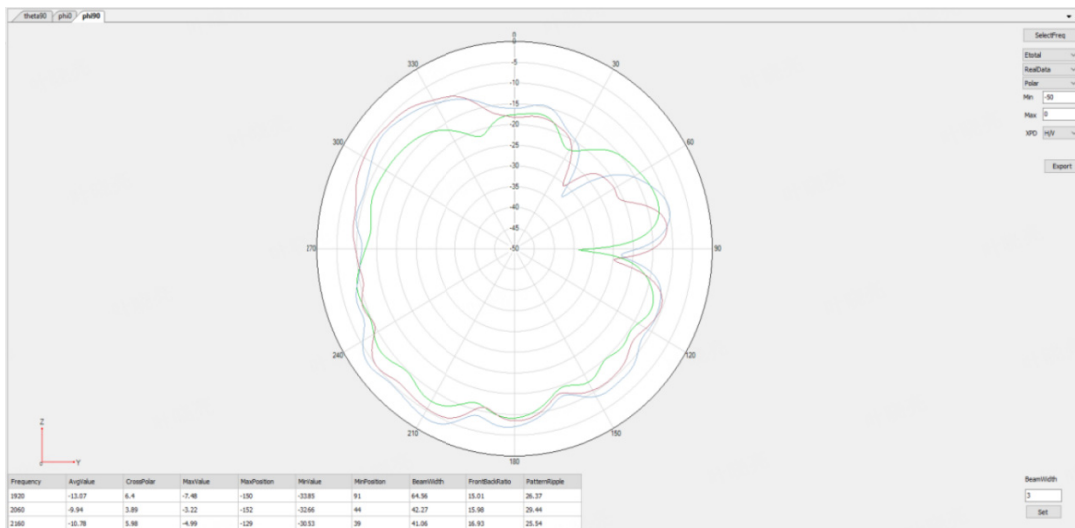
B3/B2 Phi=90deg



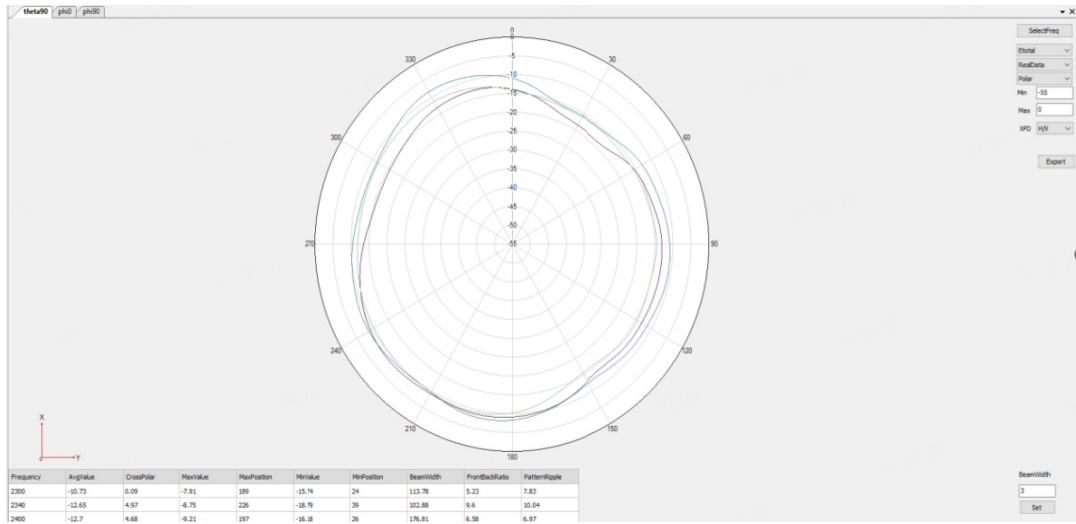
B1/B4 Theta=90deg



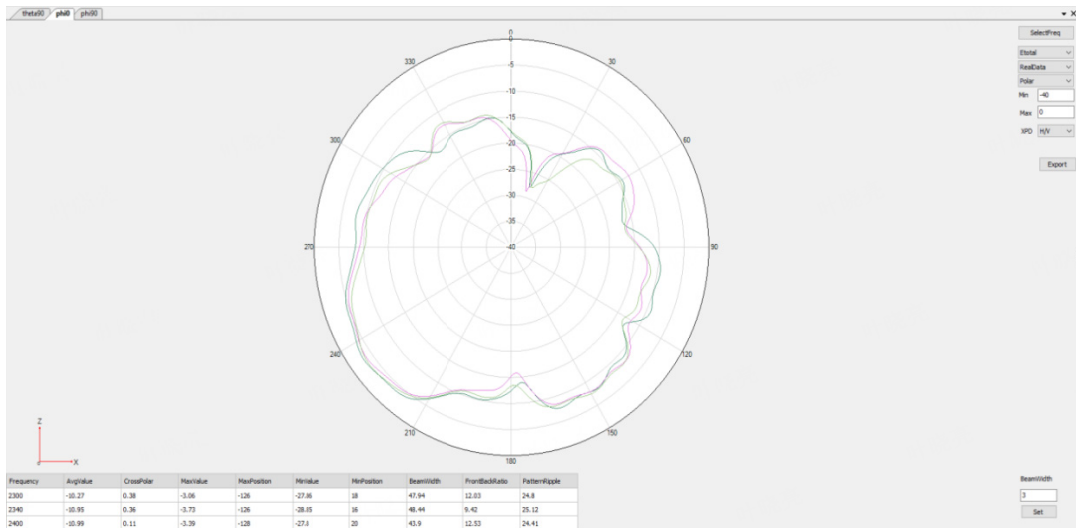
B1/B4 Phi=0deg



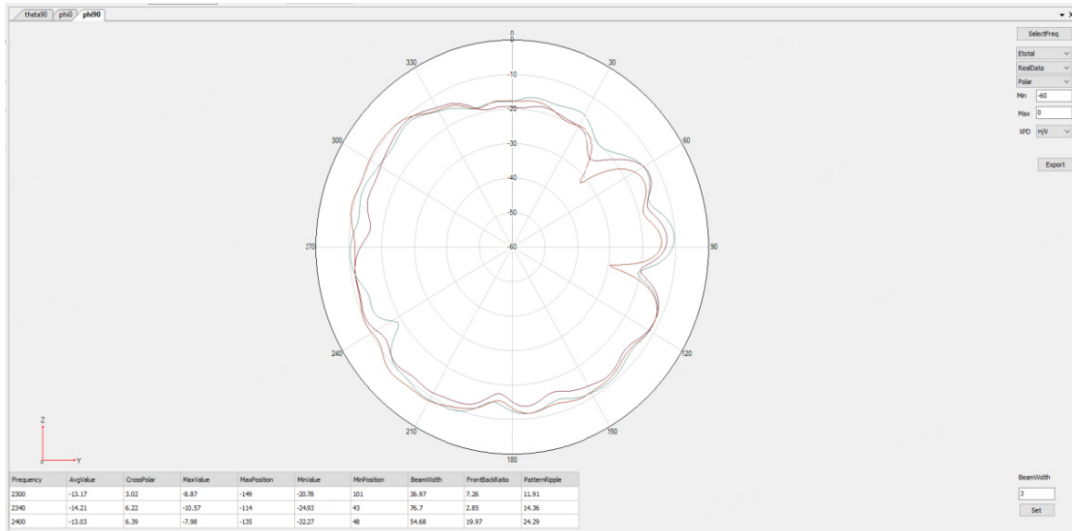
B1/B4 Phi=90deg



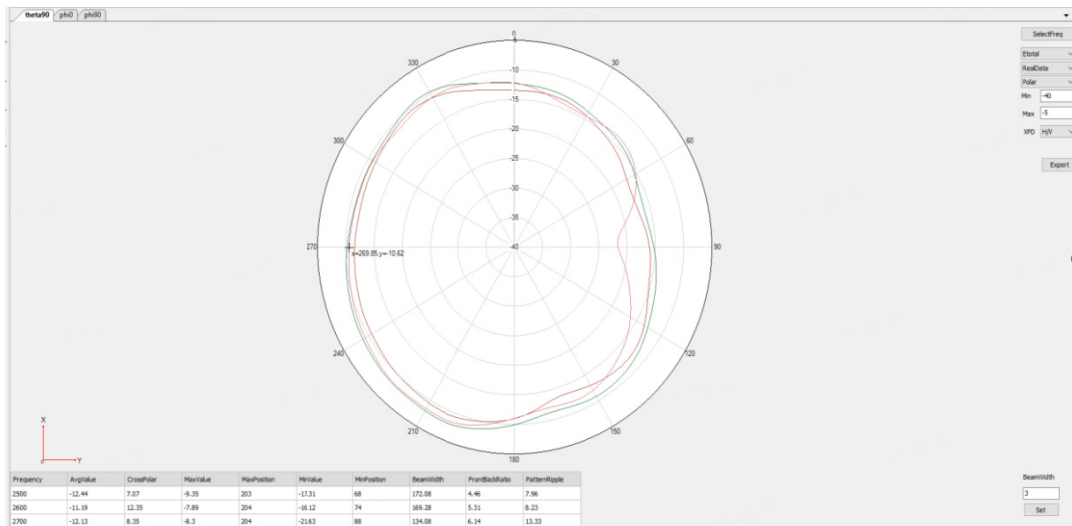
B40 Theta=90deg



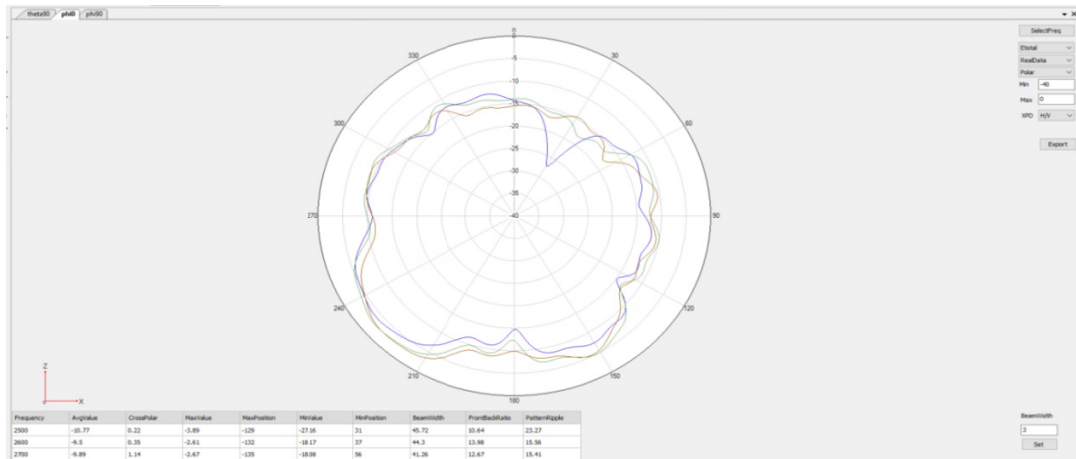
B40 Phi=0deg



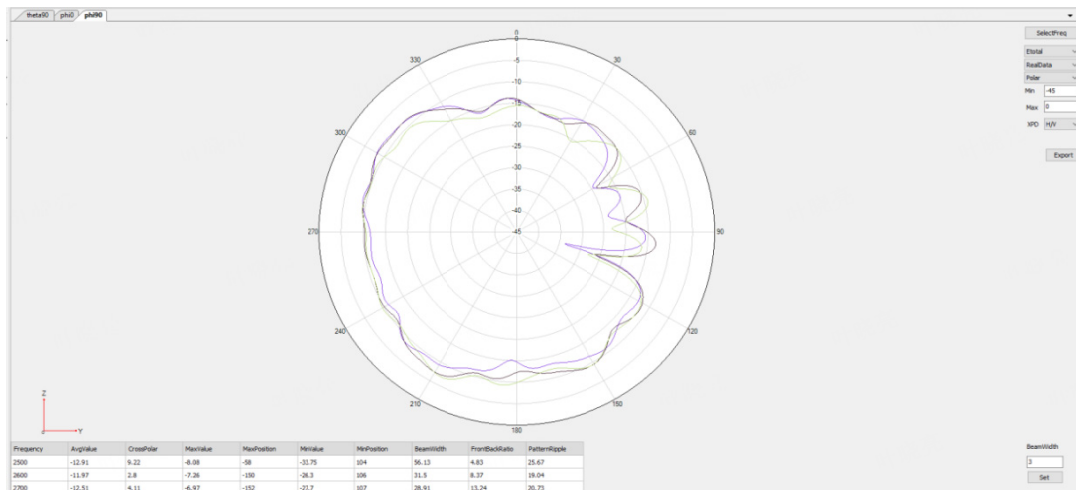
B40 Phi=90deg



B7/B38/B41 Theta=90deg

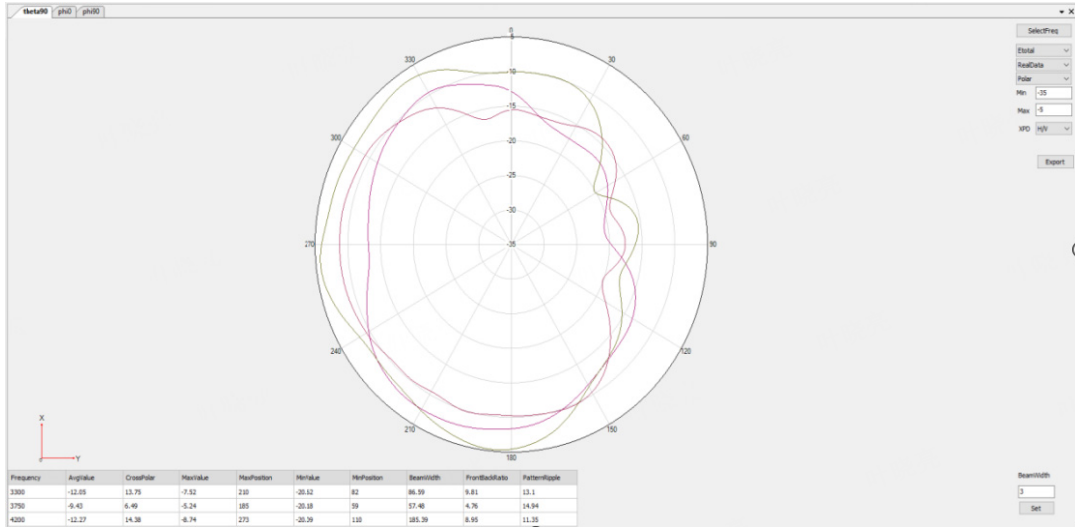


B7/B38/B41 Phi=0deg

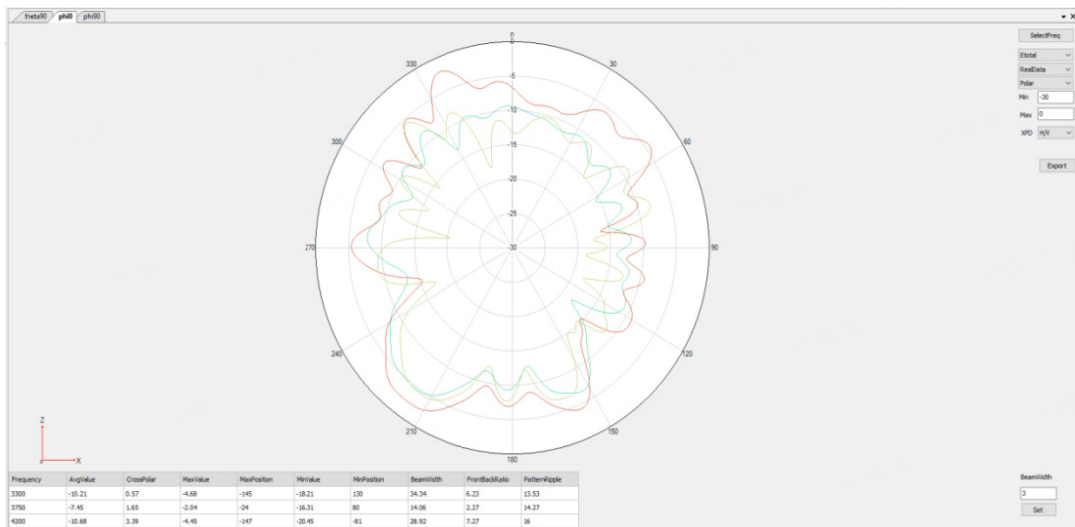


B7/B38/B41 Phi=90deg

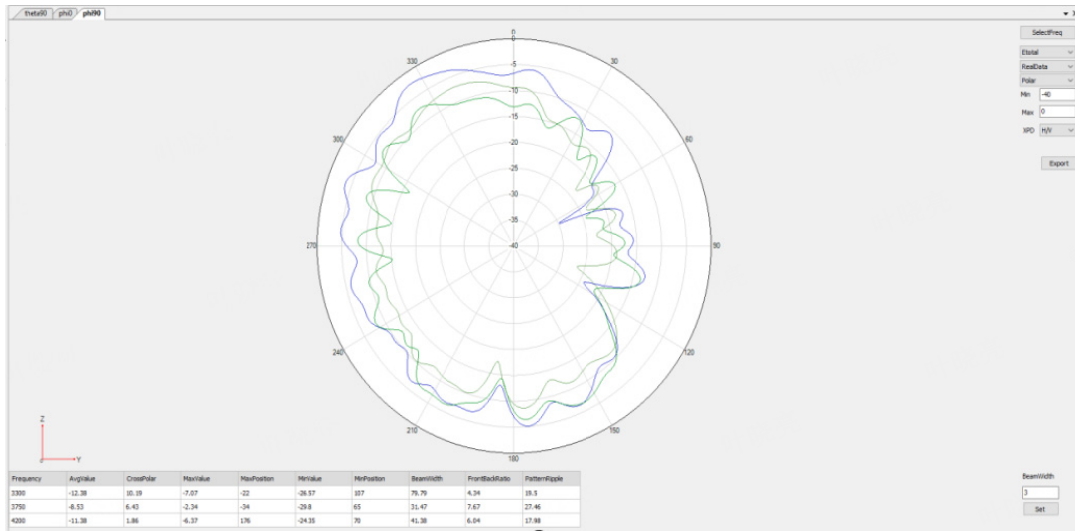
ANT6: N77/N78



N77/N78 Theta=90deg

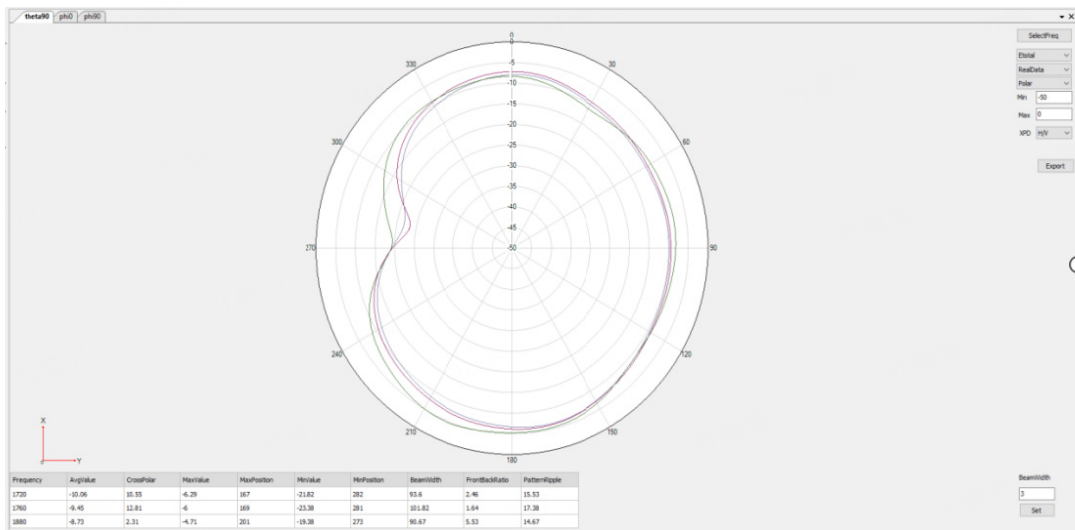


N77/N78 Phi=0deg

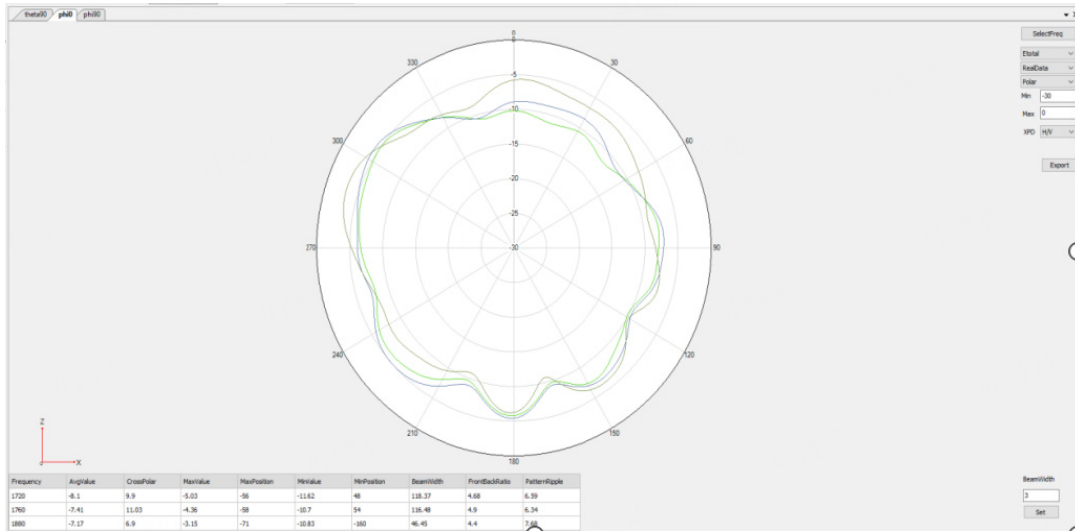


N77/N78 Phi=90deg

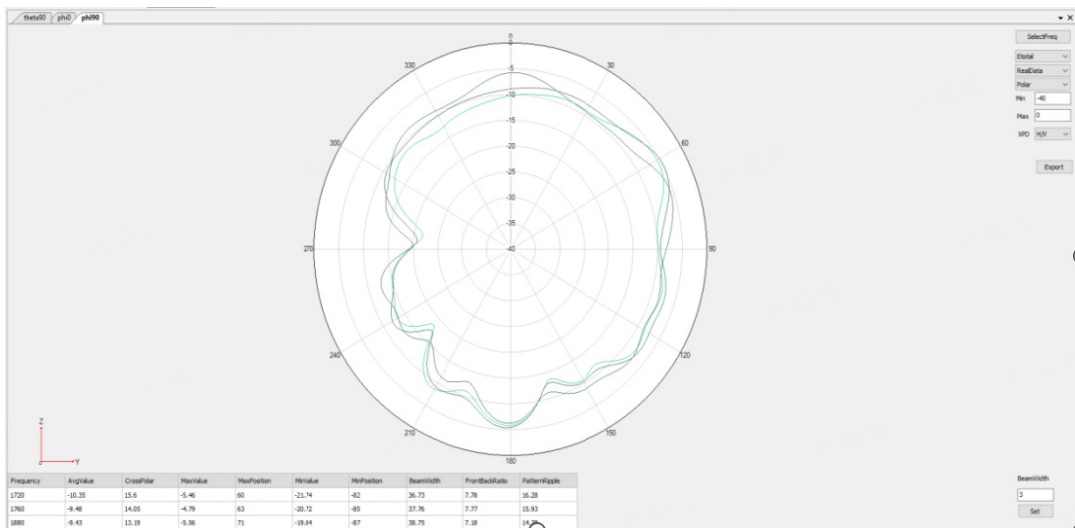
ANT7: MHB+N77/N78



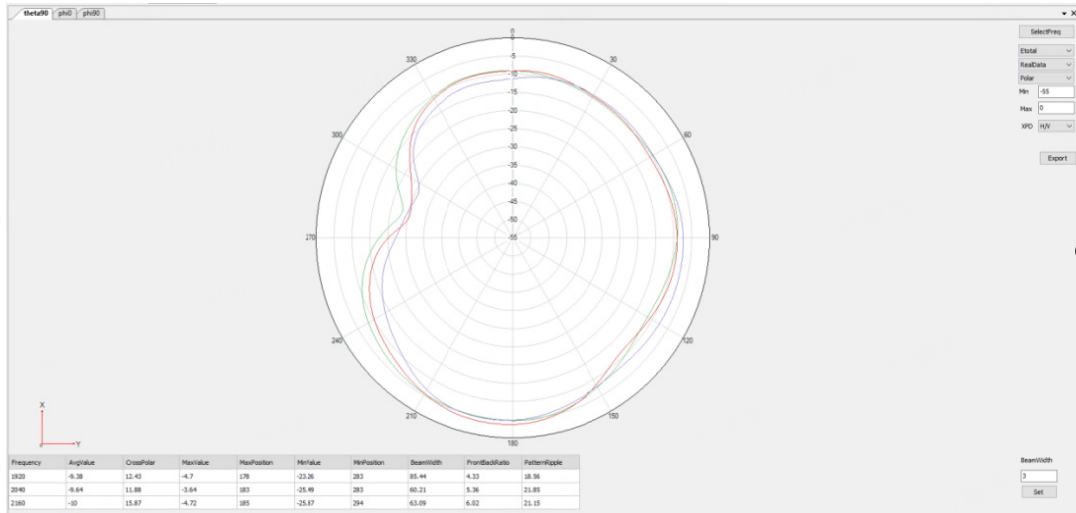
B3/B2 Theta=90deg



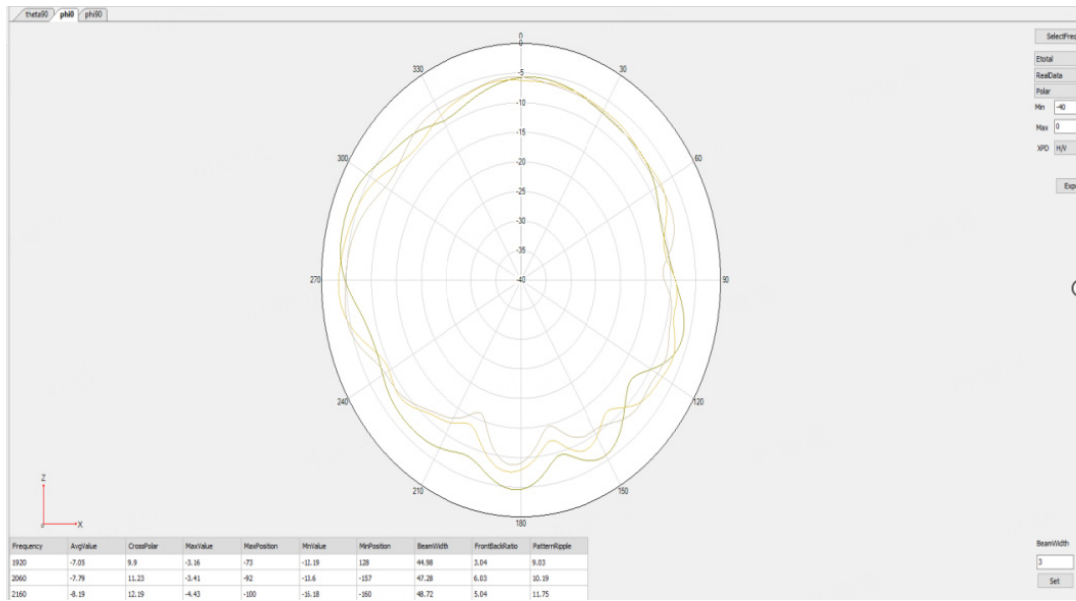
B3/B2 Phi=0deg



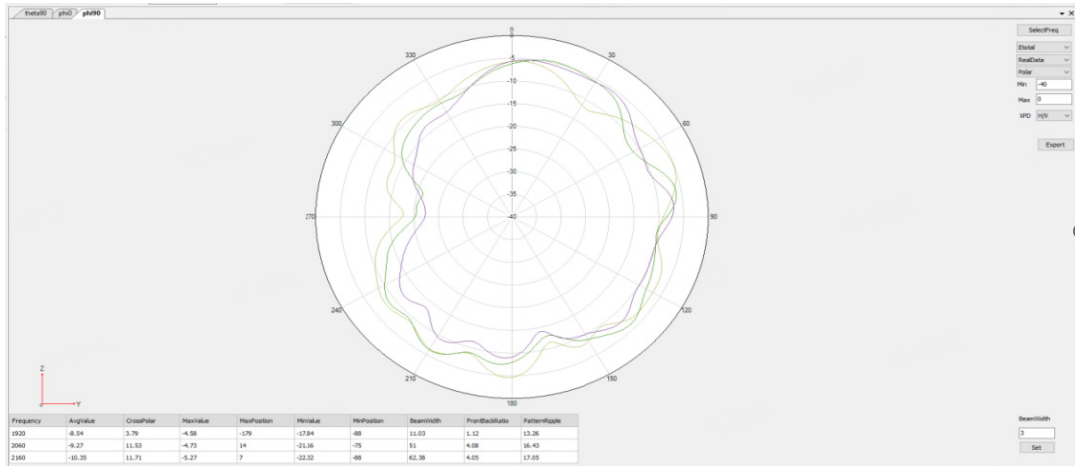
B3/B2 Phi=90deg



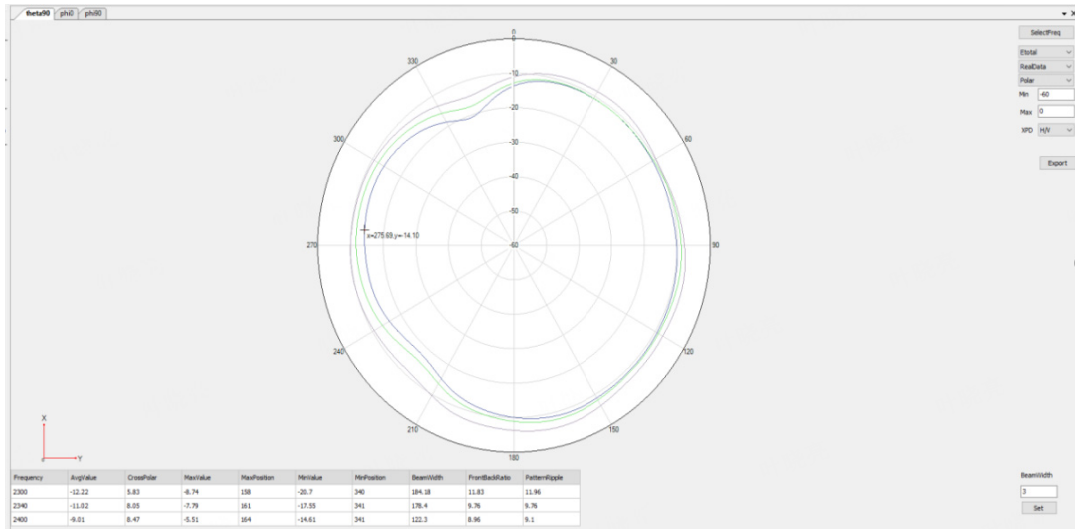
B1/B4 Theta=90deg



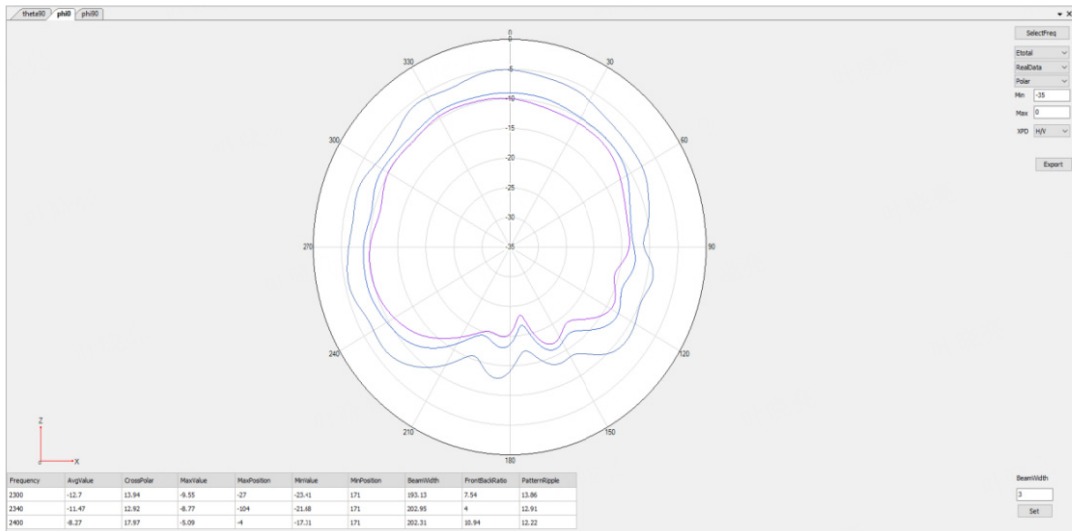
B1/B4 Phi=0deg



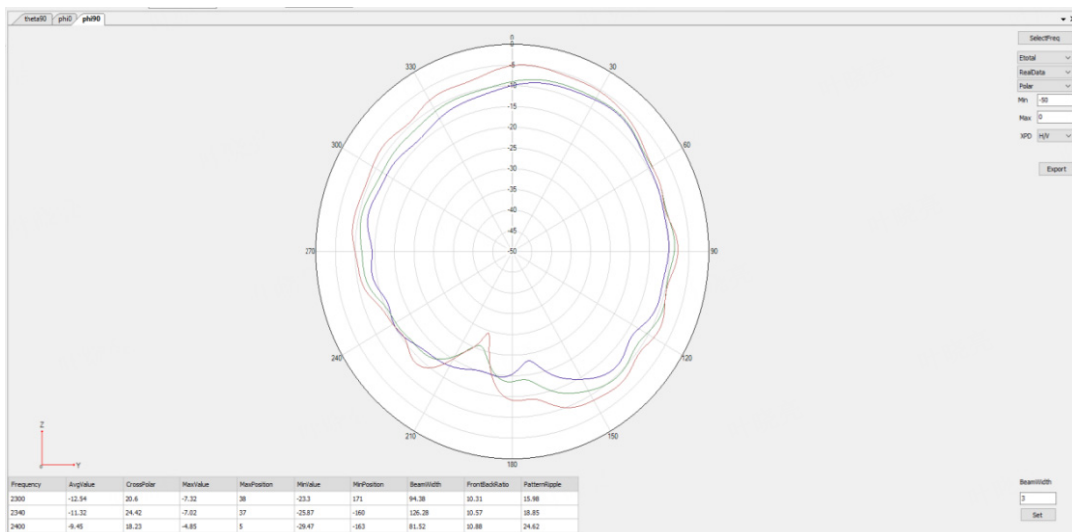
B1/B4 Phi=90deg



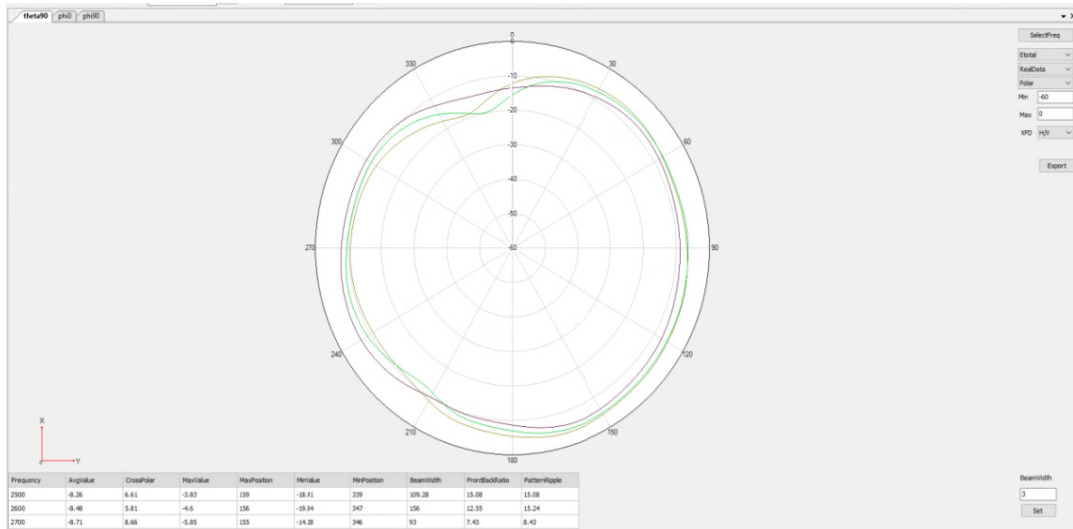
B40 Theta=90deg



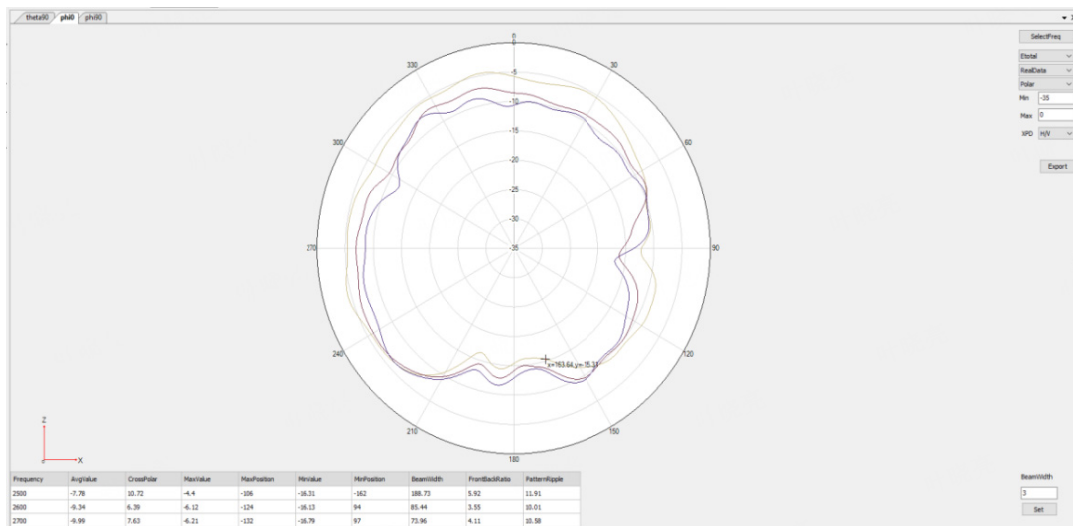
B40 Phi=0deg



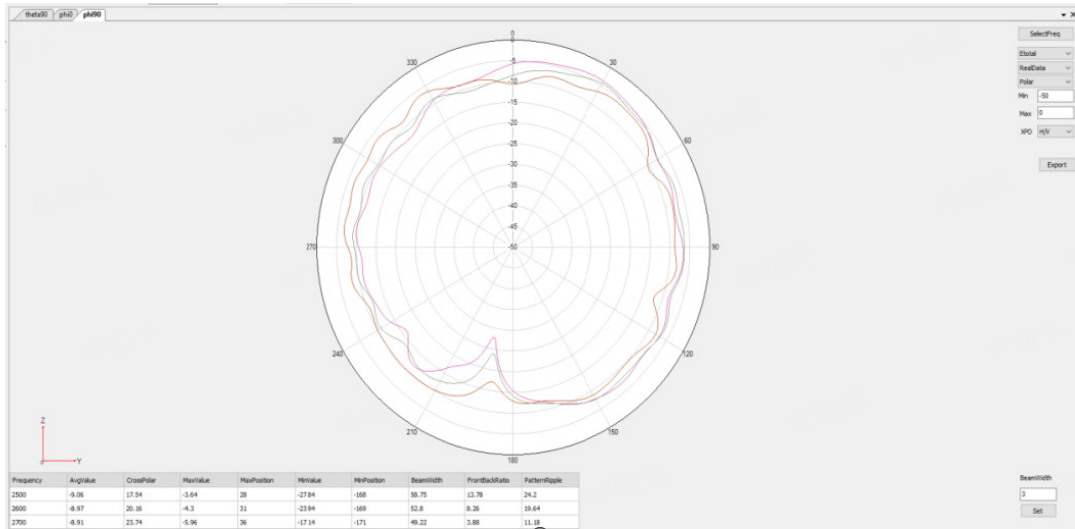
B40 Phi=90deg



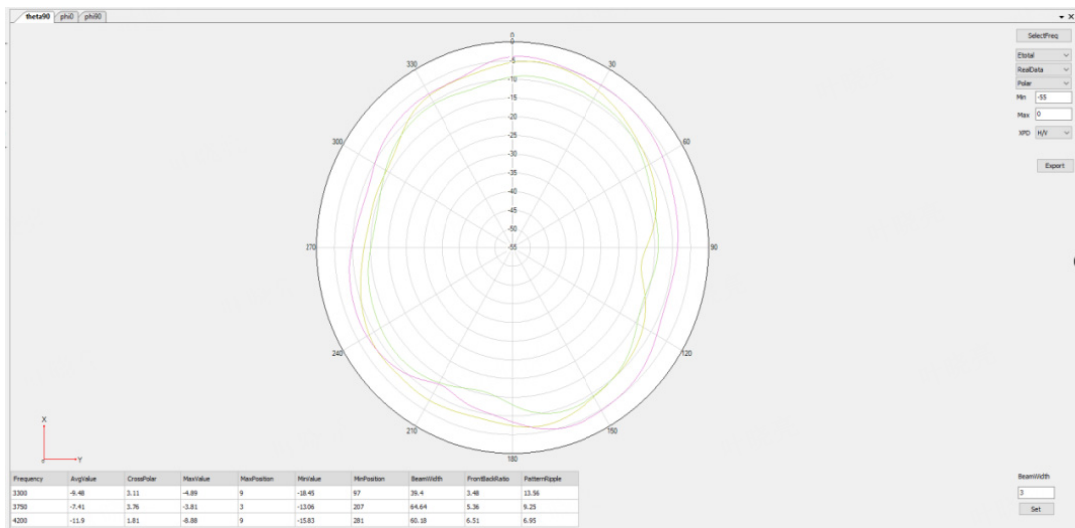
B7/B38/B41 Theta=90deg



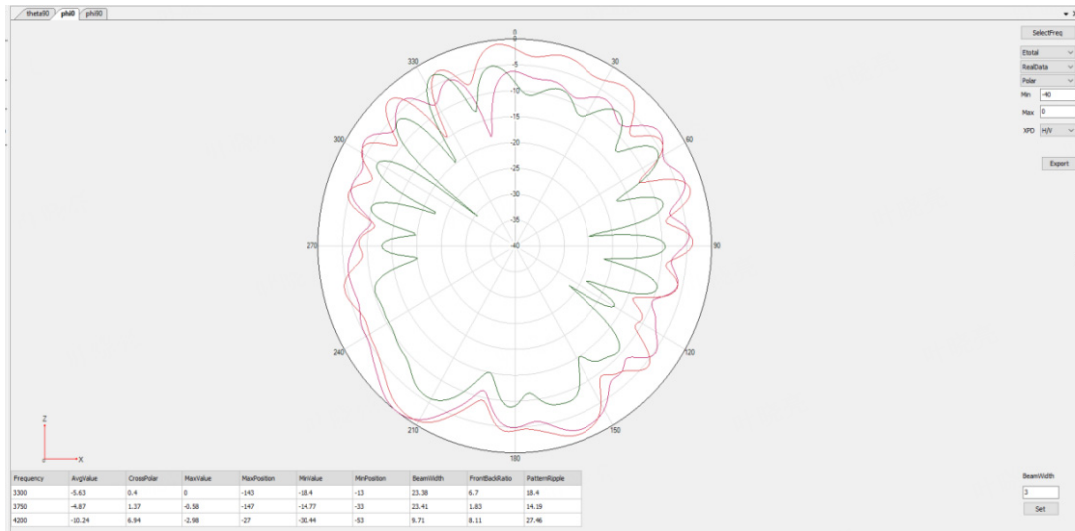
B7/B38/B41 Phi=0deg



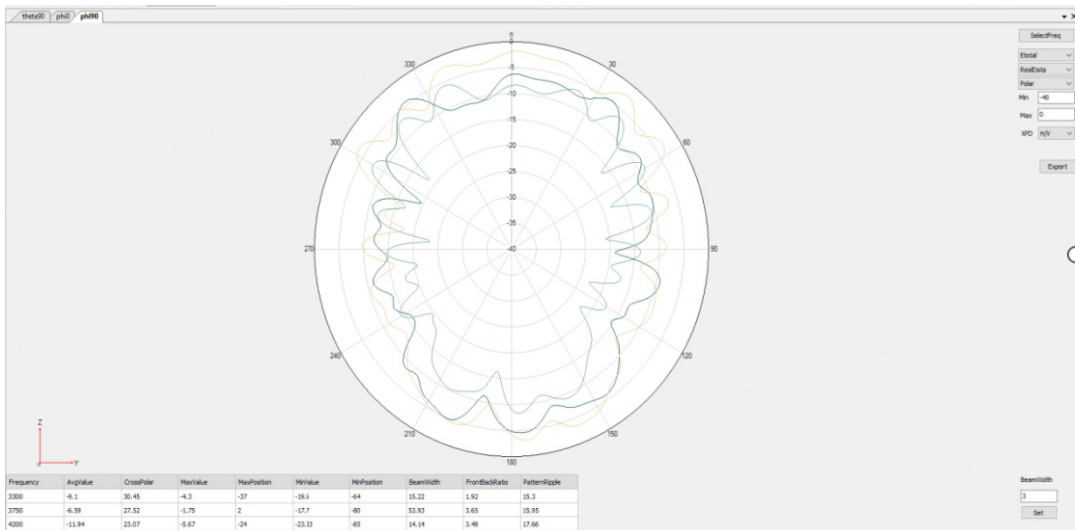
B7/B38/B41 Phi=90deg



N77/N78 Theta=90deg

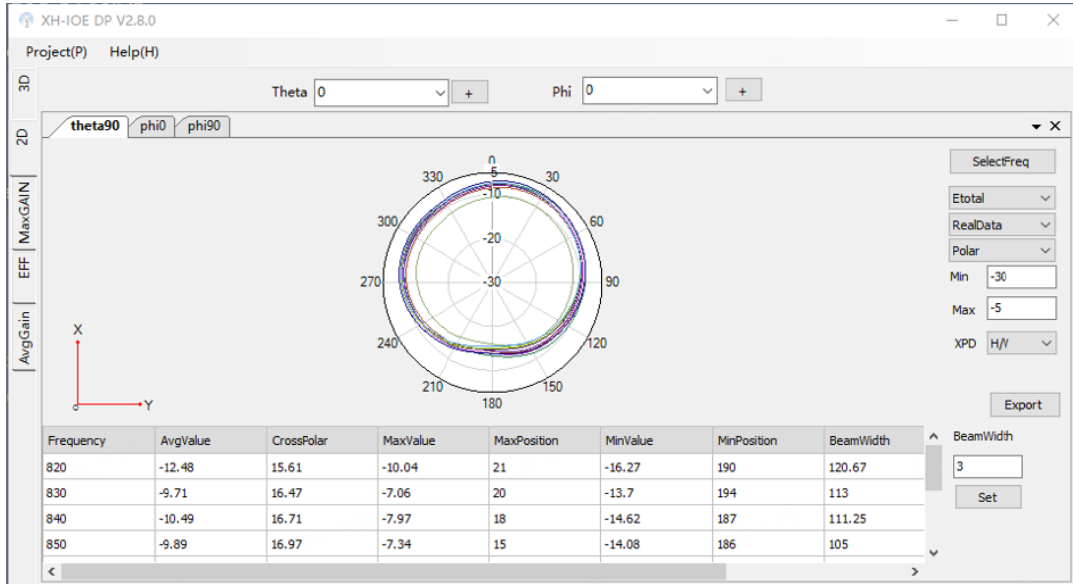


N77/N78 Phi=0deg

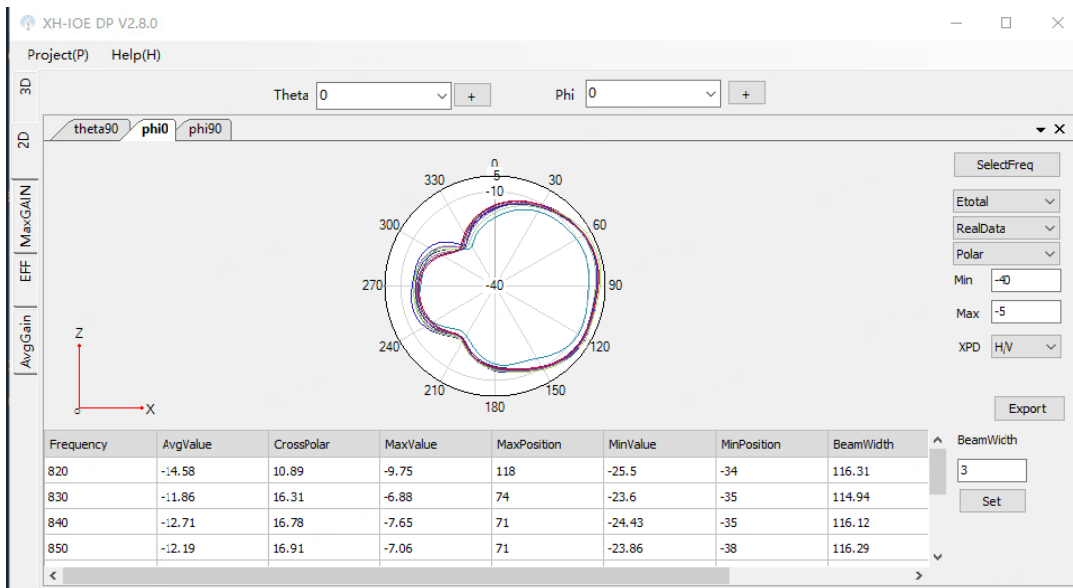


N77/N78 Phi=90deg

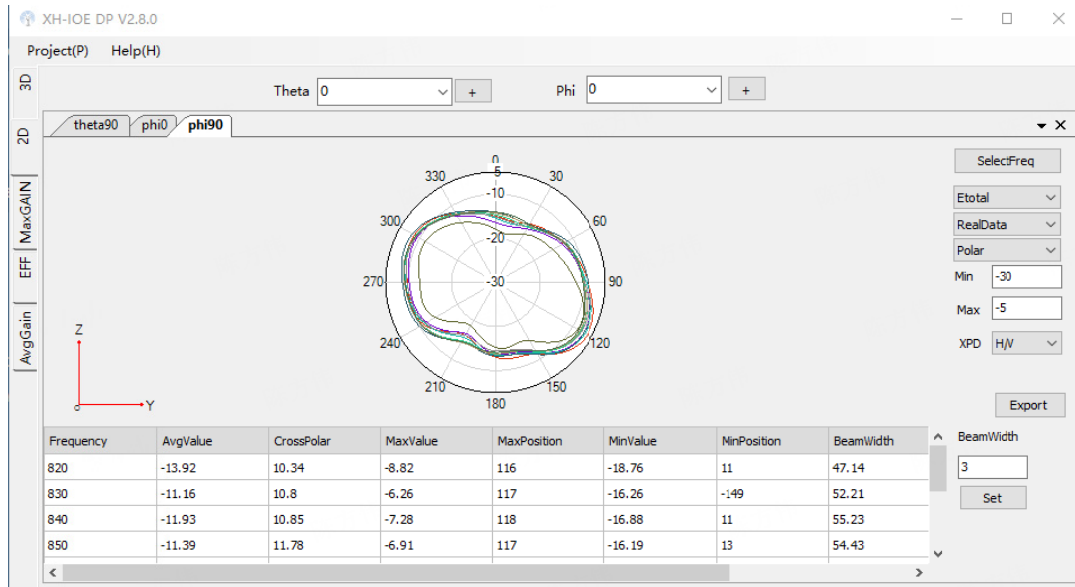
ANT4:LB DRX



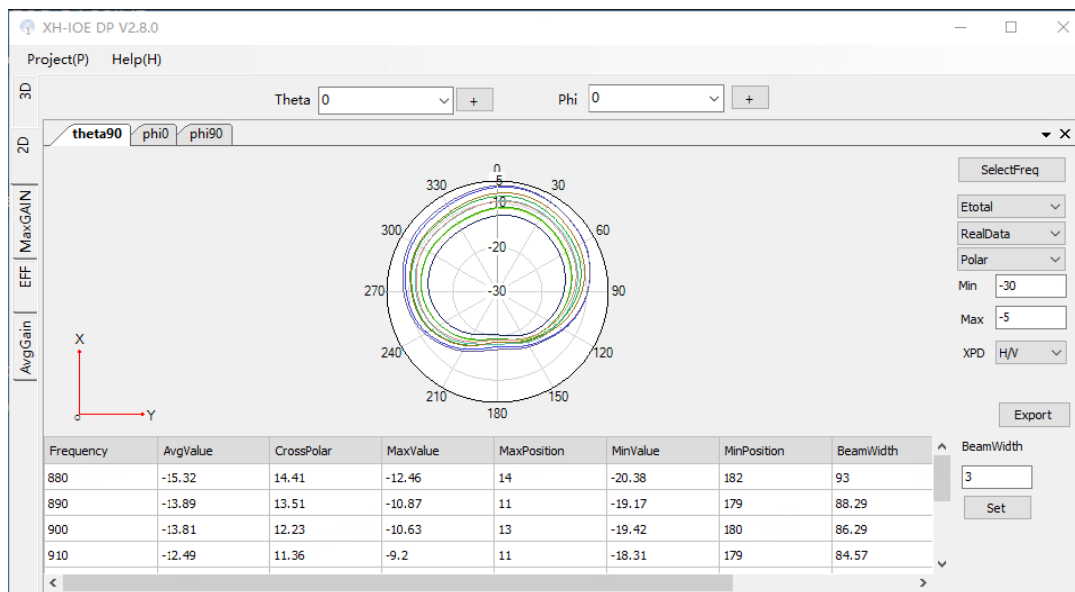
GSM 850/WCDMA B5/LTE B5/NR n5 Theta=90deg



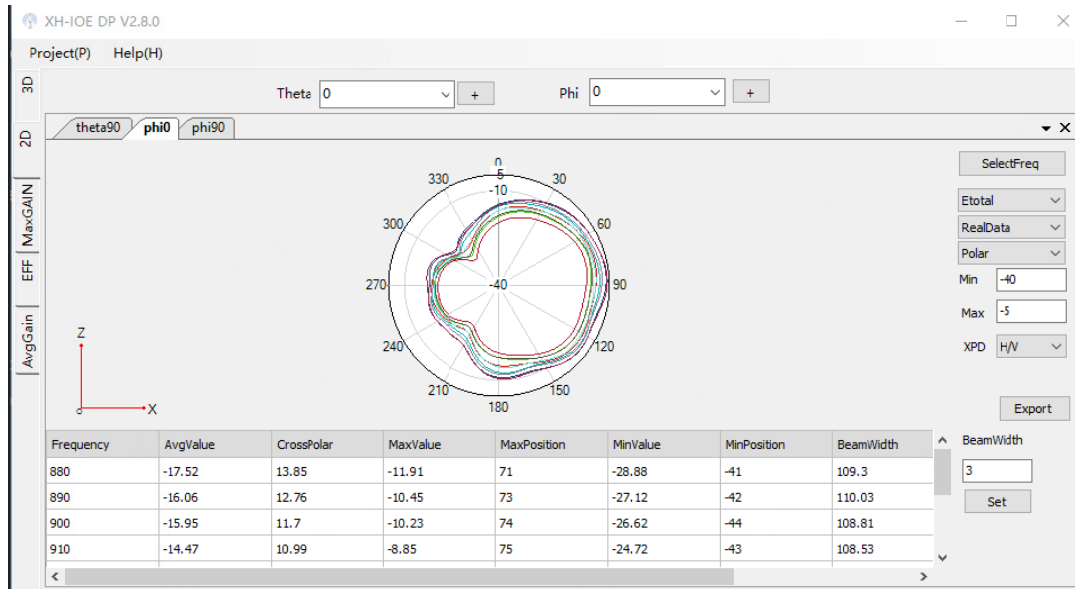
GSM 850/WCDMA B5/LTE B5/NR n5 Phi=0deg



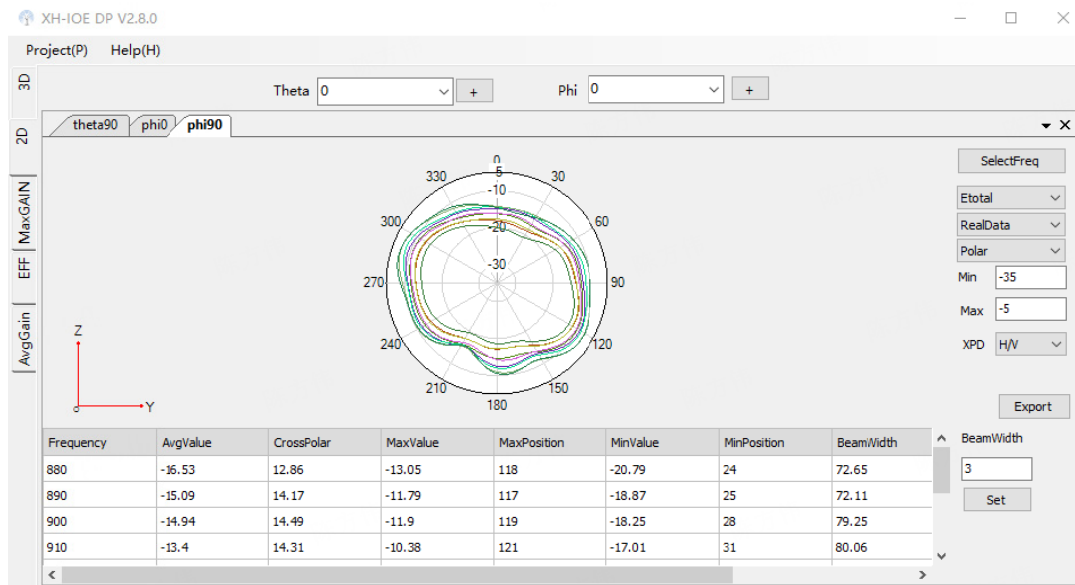
GSM 850/WCDMA B5/LTE B5/NR n5 Phi=90deg



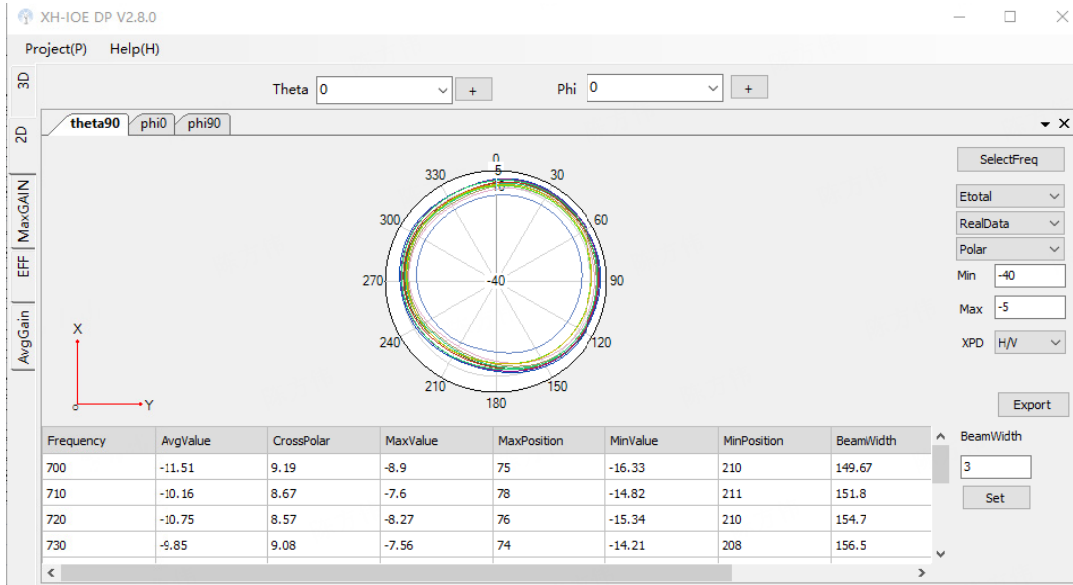
GSM 900/WCDMA B8/LTE B8/NR n8: Theta=90deg



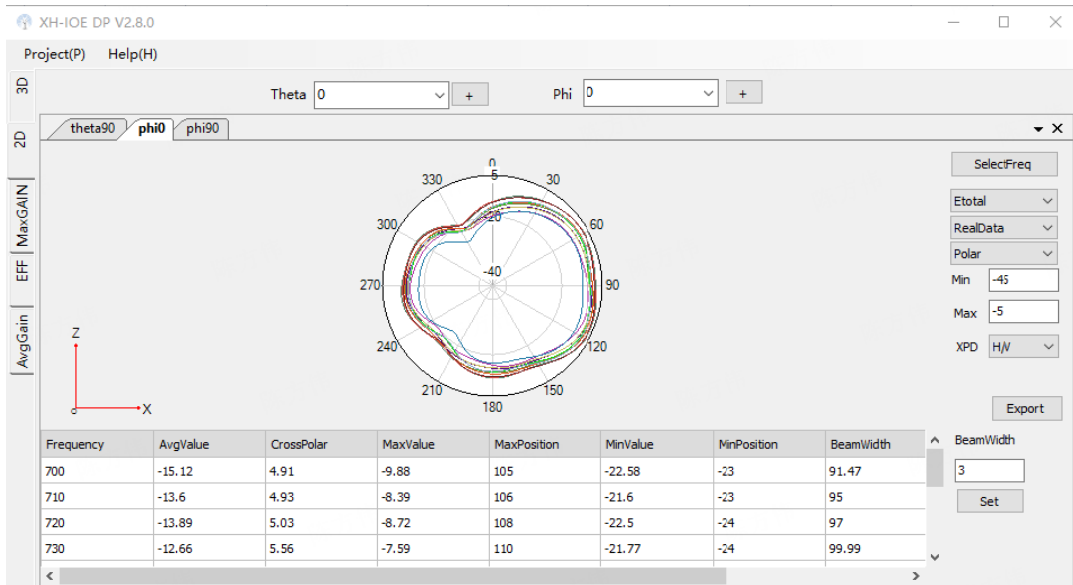
GSM 900/WCDMA B8/LTE B8/NR n8: Phi=0deg



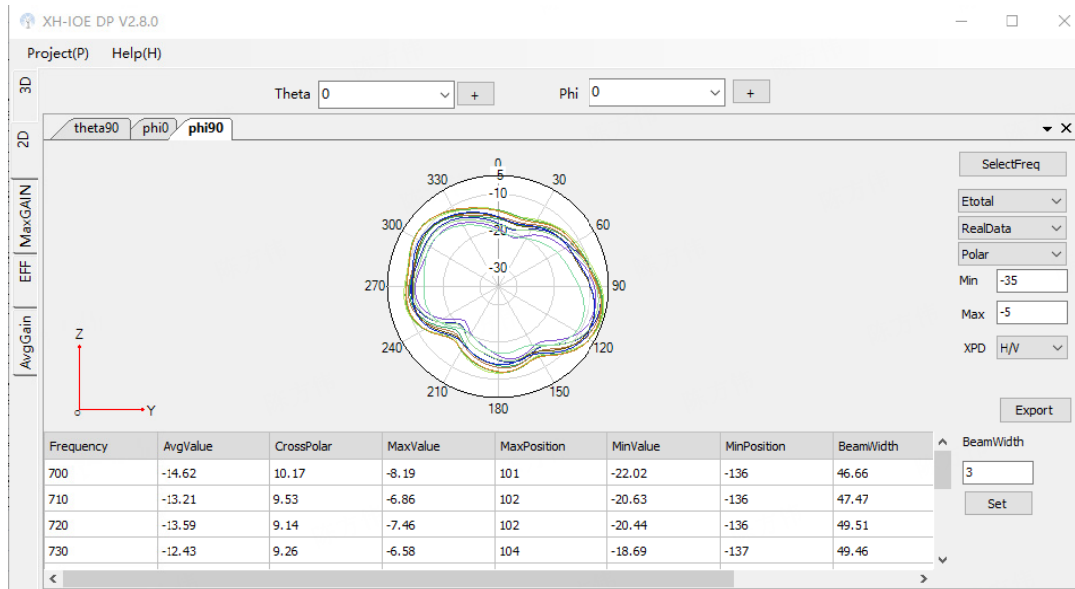
GSM 900/WCDMA B8/LTE B8/NR n8: Phi=90deg



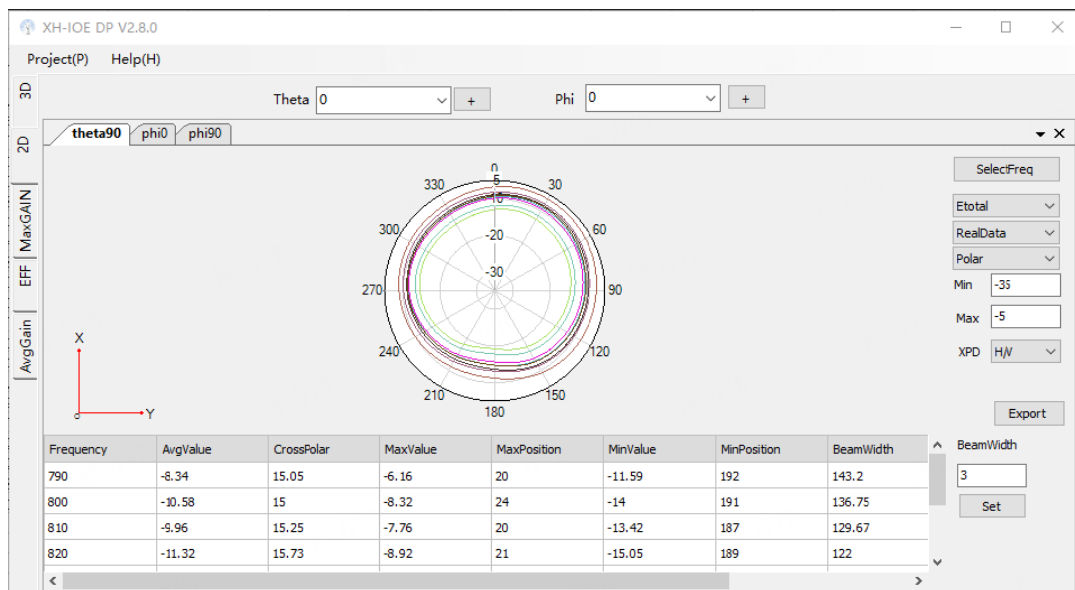
LTE B12/B13/B17/B28 NR n12/n28: Theta=90deg



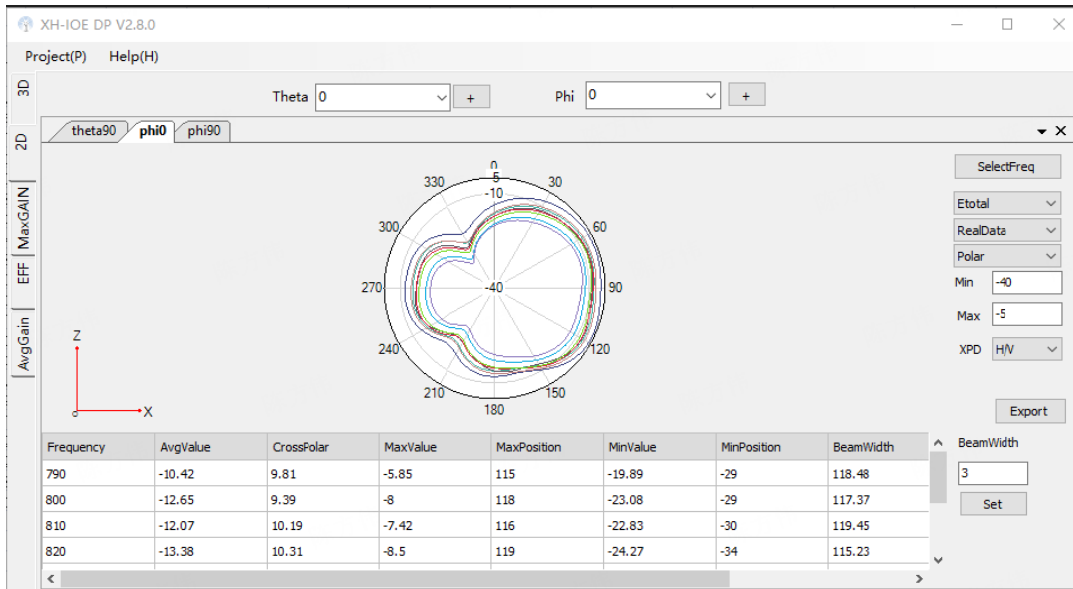
LTE B12/B13/B17/B28 NR n12/n28: Phi=0deg



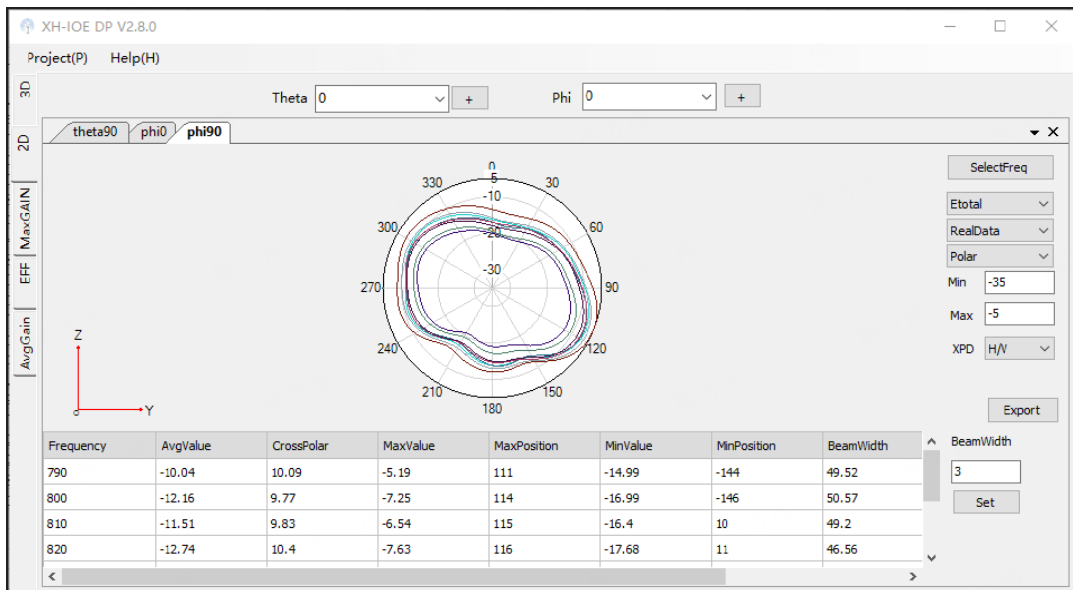
LTE B12/B13/B17/B28 NR n12/n28: Phi=90deg



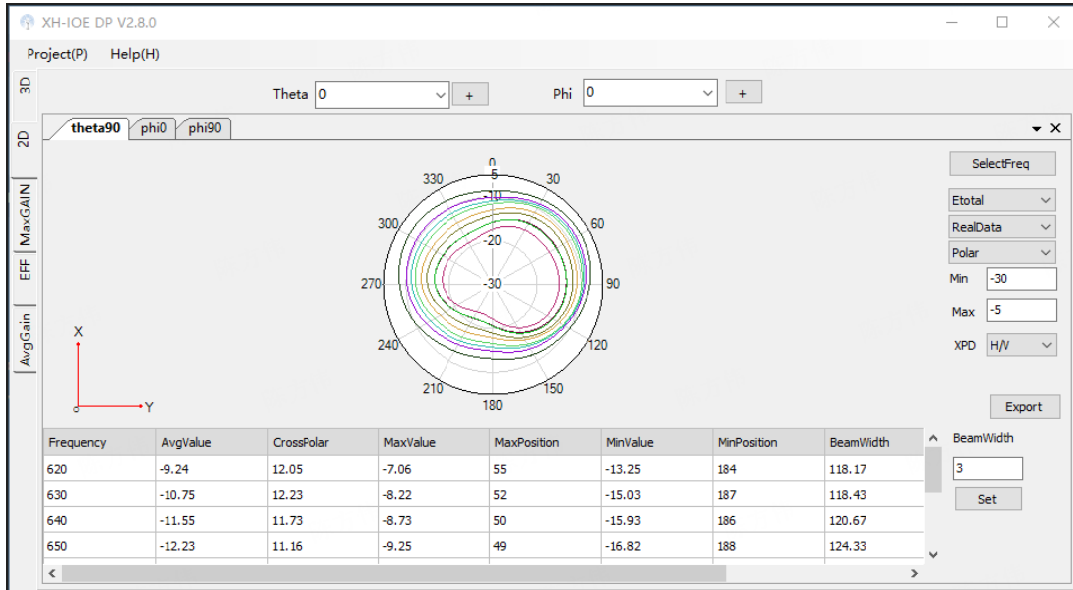
LTE B20 NR n20: Theta=90deg



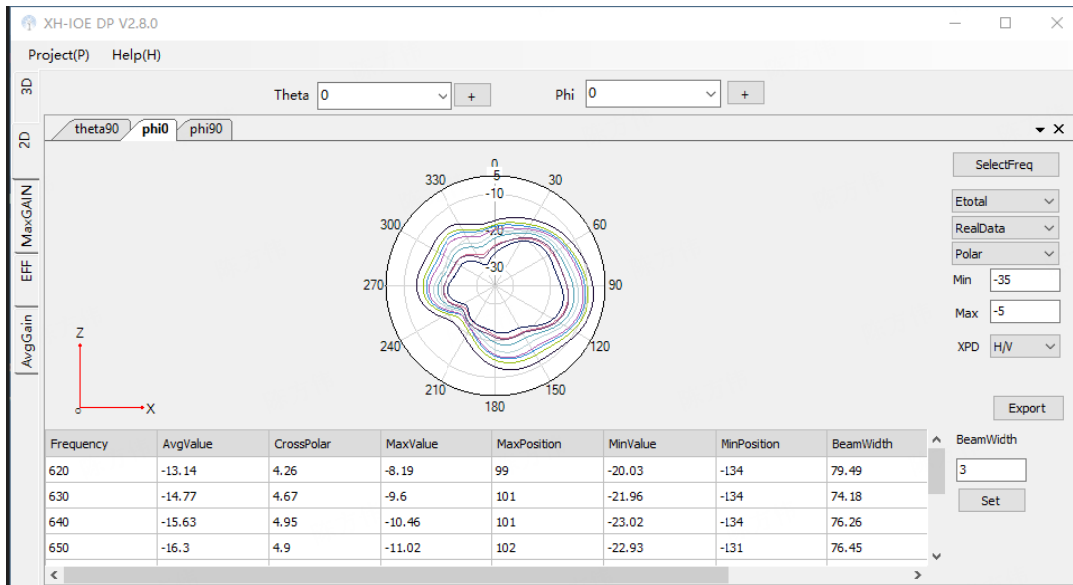
LTE B20 NR n20: Phi=0deg



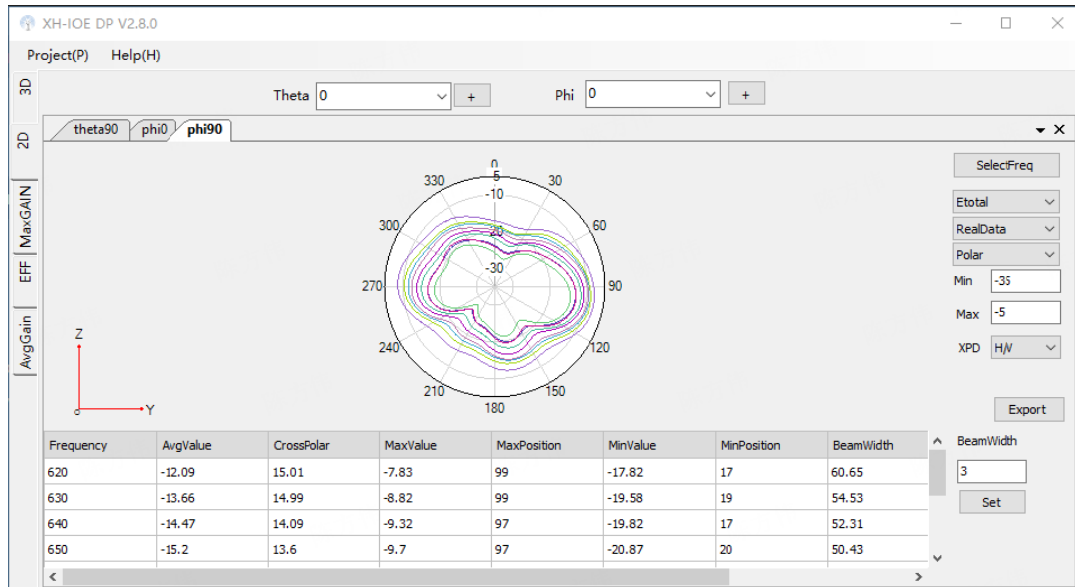
LTE B20 NR n20: Phi=90deg



NR n71: Theta=90deg



NR n71: Phi=0deg



NR n71: Phi=90deg

Antenna Location and size:

