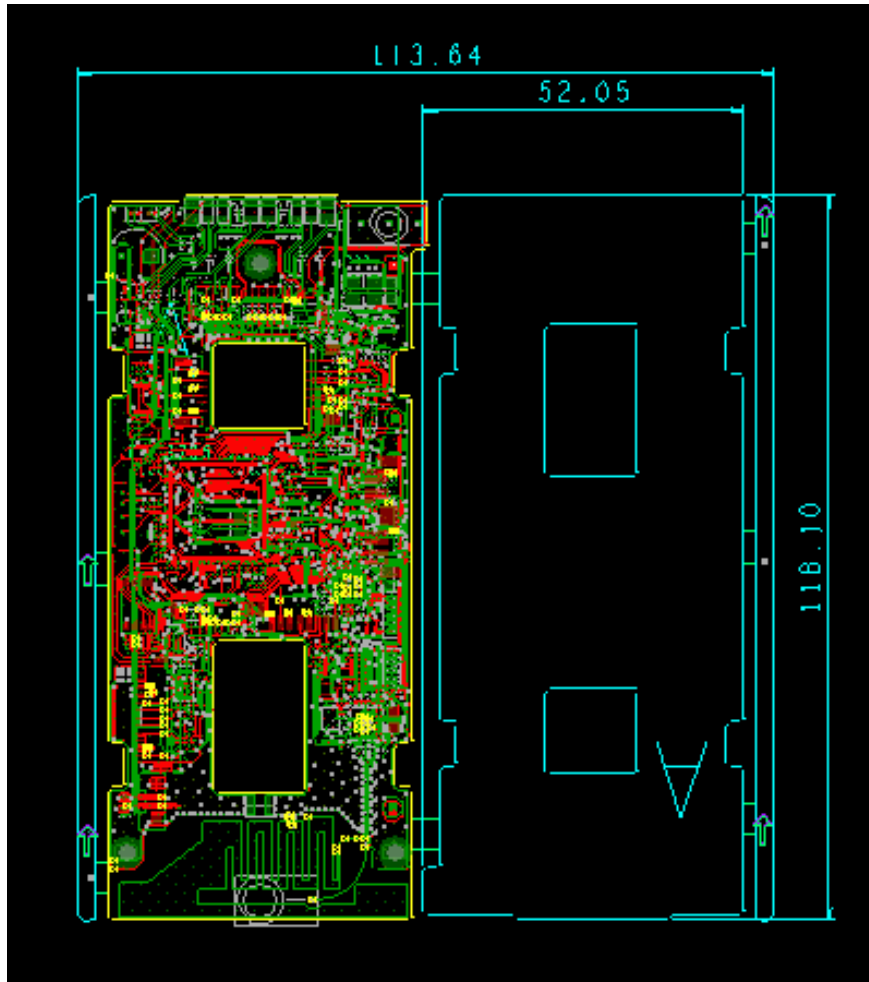


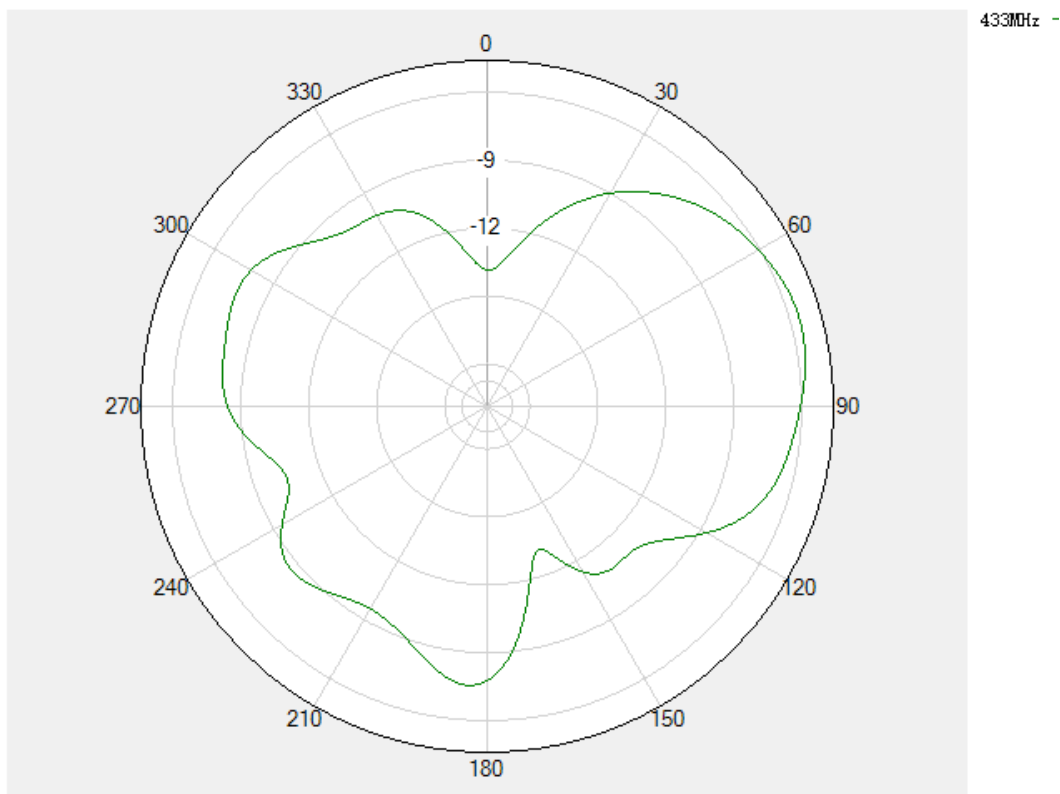
Antenna Specifications

Design Specifications	Typical
Antenna Type*	PCB
Working Frequency	433.1- 433.7 MHz
Antenna Gain	-1.58dbi
Antenna Efficiency	≥ 25%
VSWR	≤ 1.41
Impedance	50 ohm
Overall Dimensions*	118.1mm*52.05mm

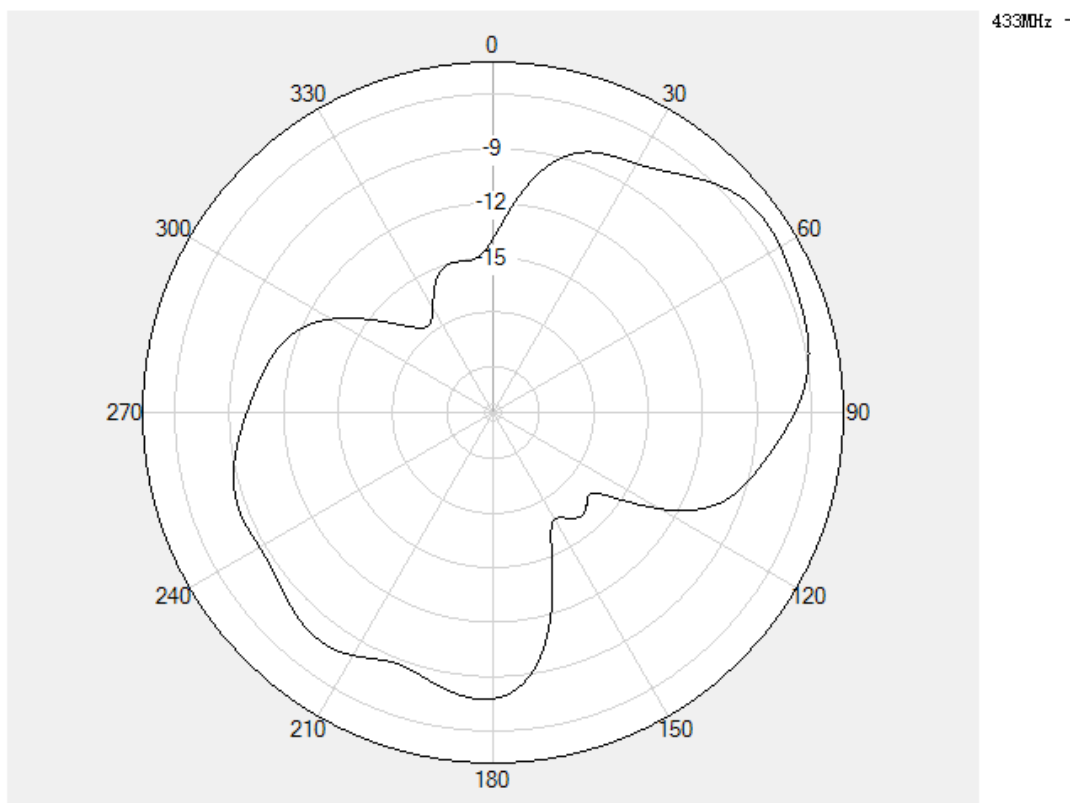


2D 方向图

cut phi 0 180 type Etot mag ☐ XY/AF SaveWave ☐ Cartesian



cut phi 90 180 type Etot mag ☐ XY/AF SaveWave ☐ Cartesian



cut

theta

▼

90

180

type

Ettotal

▼

mag

▼

☐ XY/AF

SaveWave

☐ Cartesian

