

English

1 APPEARANCE

1. Test/Silence Button
2. Alarm/Test/Signal Indicator
3. Tamper Switch
4. Battery Holder

2 ENROLLMENT

3 INSTALLATION

- i. Check signal strength.
- ii. Install the detector.

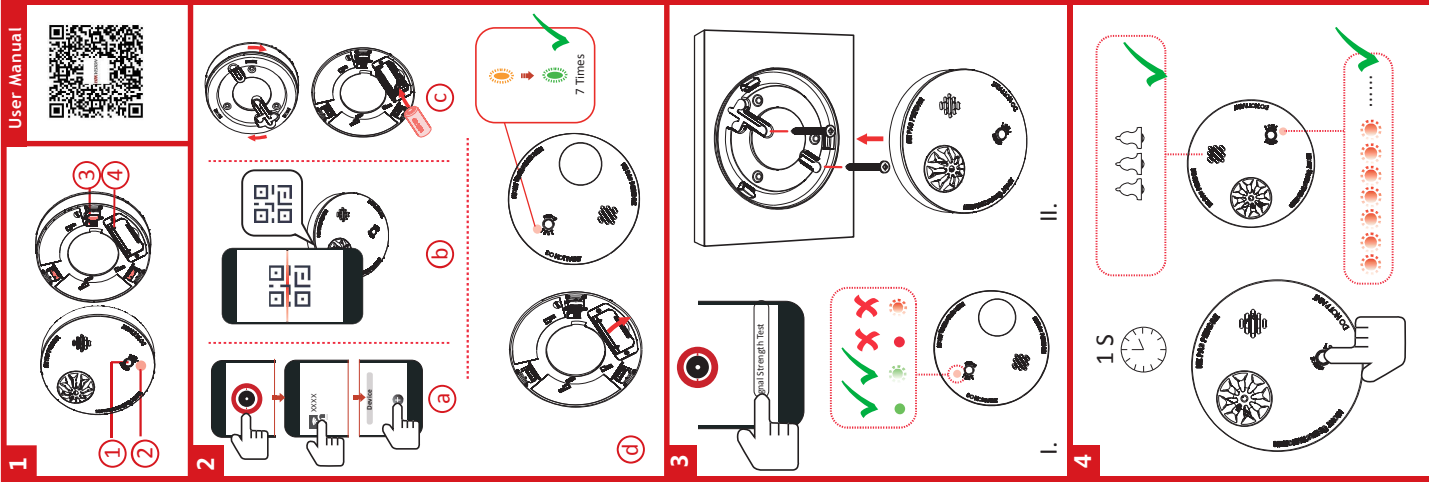
4 TEST

User Manual

Scan the QR code for more information and operation help.

Specification

Alarm Sound Interlink	Supported
Operation Mode	Independent & wireless reporting
Siren Volume	2-85 dB @ 3 m
LED Indicator	Blue (Alarm)
Operating temperature	-10 °C to 55 °C (-14 °F to 131 °F)
Storage temperature	-20 °C to 60 °C (-4 °F to 140 °F)
Operating humidity	10% to 95%
Dimension (D x H)	43.3 x 43.8 mm
Transmission Frequency	863 MHz (free space)
RF range	800 m (free space)
Battery	Non-Removable CR17450 X 1 For Main Sensor CR123A x 1 RF Module, 3V, 10 Years life span



User Manual



