

PIXMOB

Nova Plus

LUXX • LUXX CUP • LUXX+



USER MANUAL

PIXMOB

OVERVIEW

Description of the product.....	1
Symbols used in this Manual.....	1
Technical Data.....	2

SECTION 1: SAFETY

Electrical Safety.....	3
Prohibited use	3
Safety Notice & Regulatory Compliance.....	4
Labelling.....	5

SECTION 2: MAINTENANCE

Luxx Family Care Instructions.....	8
Removing the Armest - LUXX & Luxx Cup.....	8
Removing the Armest - LUXX Plus.....	8

SECTION 3: SUPPORT

Contacting Technical Support.....	9
Recycling & Environmental Notice.....	9

Description of the product

The Nova Plus Luxx family are products intended to light up during events by receiving PixMob signals and interact with the user through buttons.

Symbols used in this manual

WARNING

Indicates a potentially hazardous situation or an unintended use which, if not avoided, could result in serious injury.

CAUTION

Indicates a potentially hazardous situation or an unintended use which, if not avoided, may result in minor injury and/or appreciable material or environmental damage.



ELECTRICAL SAFETY HAZARD



LASER SAFETY HAZARD

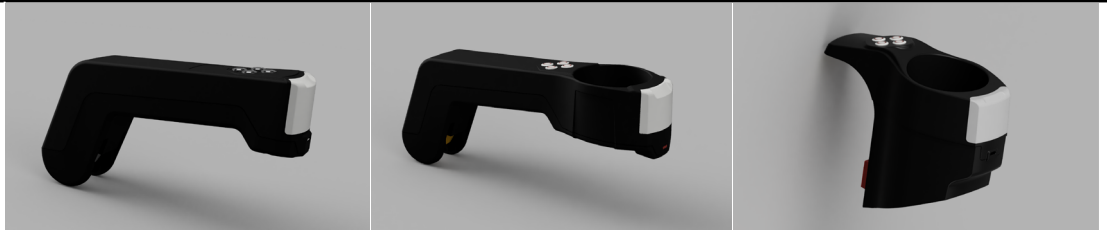





READ BEFORE PROCEEDING



**DO NOT PROCEED IF CONDITION
NOT MET**

TECHNICAL DATA



Model	NOVA PLUS LUXX STANDARD	NOVA PLUS LUXX CUP	NOVA PLUS LUXX PLUS
Description	LED Armrest	LED Armrest	LED Armrest
Dimensions	290mm x 58mm x 122mm	170mm x 65mm x 24mm	364mm x 121mm x 91mm
Weight	1.2kg/42.3 oz	1.3kg/46 oz	900g/31.8 oz
Certification	FCC	FCC	FCC
Laser Warning Logotype			
Laser Specifications	650 nm <5mW Class 3R	650 nm <5mW Class 3R	650 nm <5mW Class 3R
Brightness	RGB LED	RGB LED	RGB LED
Data Connector	Cat5E/RJ45	Cat5E/RJ45	Cat5E/RJ45
Operating Temp	0° to 45° C / 32° to 113° F	0° to 45° C / 32° to 113° F	0° to 45° C / 32° to 113° F
Input Voltage	10.8-13.2 V DC	10.8-13.2 V DC	10.8-13.2 V DC
Origin	Designed in Canada Made in China	Designed in Canada Made in China	Designed in Canada Made in China

Electrical Safety

Access to the internal components is not necessary during normal operation. Under no circumstance is it required to open the enclosures.

If a unit is suspected of requiring service, **contact the manufacturer.**



- **Do not open the enclosures**
- Do not tamper with power supply lead



- The device shall be powered by 12VDC $\pm 10\%$ input voltage
- The device shall consume a maximum power of 20W

Prohibited use

- Using the product without instruction
- Removal of explanatory and hazard labels
- Opening of the equipment by using tools (screwdrivers, etc.)
- Using outside the stated limits
- Deactivation of safety systems
- Use of accessories from other manufacturers without approval
- Carrying out modification or conversion of the product

Safety Notice & Regulatory Compliance

Hazards in use

WARNING

Never attempt to repair the product yourself. In case of damage, contact PixMob.

CAUTION

Changes or modifications not expressly approved by PixMob could void the user's authority to operate the equipment.

Disclaimer

All maintenance excluding routine cleaning must be performed by PixMob or trained personnel. No Maintenance or Service is required or allowed by the user.

The device contains no user serviceable parts. Do not attempt to disassemble the assembly and/or components. The laser head is sealed and should not be opened for any reason. If service or maintenance are determined to be needed, **remove the Nova Pro Luxx product** and contact PixMob for shipping instructions.

Operator Instructions

Only board operators trained and approved by PixMob may control the Nova Pro Luxx Family.

FC Compliance Notice

This device complies with part 15 of the FCC Rules. Operation is subject to the following two conditions: (1) this device may not cause harmful interference, and (2) this device must accept any interference received, including interference that may cause undesired operation.

Any changes or modifications not expressly approved by the party responsible for compliance could void the user's authority to operate the equipment.

NOTE: This equipment has been tested and found to comply with the limits for a Class B digital device, pursuant to Part 15 of the FCC Rules. These limits are designed to provide reasonable protection against harmful interference in a residential installation. This equipment generates, uses and can radiate radio frequency energy and, if not installed and used in accordance with the instructions, may cause harmful interference to radio communications. However, there is no guarantee that interference will not occur in a particular installation.

If this equipment does cause harmful interference to radio or television reception, which can be determined by turning the equipment off and on, the user is encouraged to try to correct the interference by one or more of the following measures:

- Reorient or relocate the receiving antenna.
- Increase the separation between the equipment and receiver.
- Connect the equipment into an outlet on a circuit different from that to which the receiver is connected.
- Consult the dealer or an experienced radio/TV technician for help.

The device has been evaluated to meet general RF exposure requirement. The device can be used in portable exposure condition without restriction

This equipment may only be operated indoors. Operation outdoors is in violation of 47 U.S.C. 301 and could subject the operator to serious legal penalties

Nameplate

PIXMOB 


Model: NOVA Plus LUXX Standard
Designed in Canada. Assembled in China.
Input: 12V --- 1.6A, 20W
Contains FCC ID: 2ADS4-LUXX
Complies with UL 62368-1
Complies with 21 CFR 1040.10 and 1040.11
Except for conformance with IEC 60825-1 Ed. 3.,
as described in Laser Notice No. 56, dated May 8, 2019.

S/N: 1234567
|| | ||||| | ||||| ||||| |||||

PIXMOB 

Model: NOVA Plus LUXX Cup
Designed in Canada. Assembled in China.
Input: 12V --- 1.6A, 20W
Contains FCC ID: 2ADS4-LUXX
Complies with UL 62368-1
Complies with 21 CFR 1040.10 and 1040.11
Except for conformance with IEC 60825-1 Ed. 3.,
as described in Laser Notice No. 56, dated May 8, 2019.

S/N: 1234567
|| | ||||| | ||||| ||||| |||||

PIXMOB 

Model: NOVA Plus LUXX Plus
Designed in Canada. Assembled in China.
Input: 12V --- 1.6A, 20W
Contains FCC ID: 2ADS4-LUXXPLUS
Complies with UL 62368-1
Complies with 21 CFR 1040.10 and 1040.11
Except for conformance with IEC 60825-1 Ed. 3.,
as described in Laser Notice No. 56, dated May 8, 2019.

S/N: 1234567
|| | ||||| | ||||| ||||| |||||

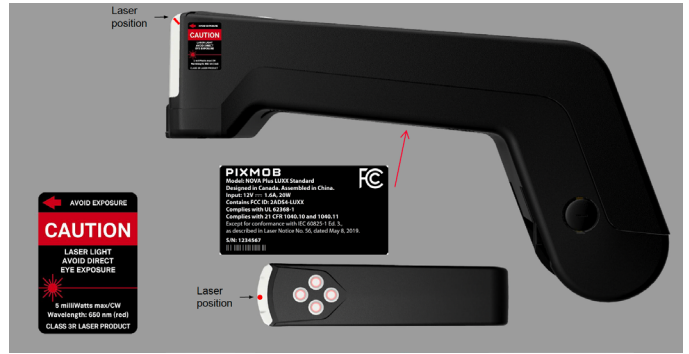
SECTION 1: SAFETY

Labelling

Nova Plus - LUXX Standard (Right)



Nova Plus - LUXX Standard (Left)



Nova Plus - LUXX CUP (Right)



Nova Plus - LUXX Standard (Left)



Nova Plus - LUXX PLUS (Right)



Nova Plus - LUXX PLUS (Left)



Luxx Family Care Instructions

Only cleaning products approved by the manufacturer should be used during routine cleaning of the Luxx Family products. **A list of products that can cause damage includes, but is not limited to :**

- Acetone (nail polish remover and other products containing acetone)
- Propylene Glycol
- Threadlocking products
- Other ammonia-based products & solvents

Maintenance Guidelines

- Use only a soft, lint-free cloth
- Clean the device with a damp, soft cloth
- Avoid abrasive cloths, towels, paper towels, or similar items
- Never immerse the device in water
- Avoid excessive wiping, which might cause damage
- Don't use aerosol sprays, bleaches, or abrasives
- Don't spray cleaners directly onto the item

LUXX CUP & LUXX STANDARD - Removal Instructions

The device contains no user serviceable parts. All maintenance excluding routine cleaning must be performed by PixMob or trained personnel.

No Service is required or allowed by the user. In the event where replacement is needed, a trained service technician will remove the armrest.

LUXX PLUS - Removal Instructions

The device contains no user serviceable parts. All maintenance excluding routine cleaning must be performed by PixMob or trained personnel.

No Service is required or allowed by the user. In the event where replacement is needed, a trained service technician will remove the Nova Plus Luxx product.

Contact Technical Support

There are no user-serviceable parts inside this product. Should you experience any issue or malfunction with your Nova Plus product, or if your Nova Plus product needs service, please contact the Technical Support Service Team at (514) 510-5777 or e-mail us at support@pixmob.com



(514) 510-5777



support@pixmob.com

Environmental Notice



By placing the above symbol on our products and accessories, PixMob is indicating that we are committed to helping reduce the amount of waste electronics ending up in municipal landfills.

Therefore, PixMob urges customers to recycle this product and its accessories. PixMob is equipped to recycle any of its electronic products and accessories and will assist our customers with their recycling options.

To arrange for recycling of your PixMob product or accessory, please contact PixMob/ESKI INC. for more information at (514) 510-5777 (USA & Canada)