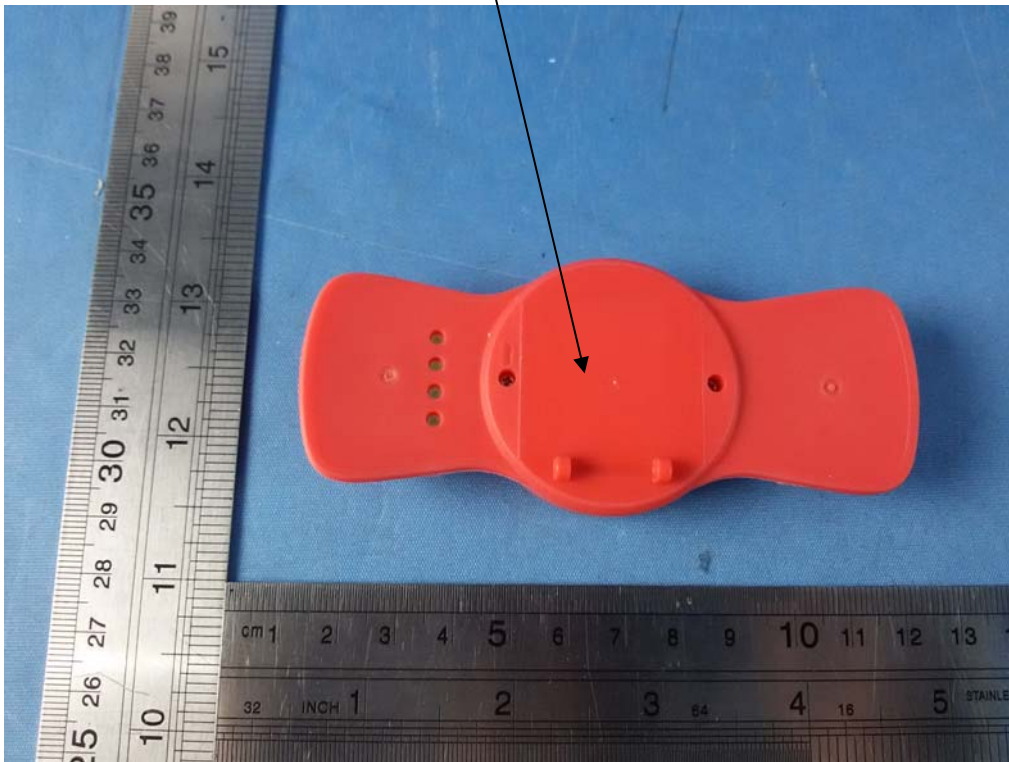


FCC ID LABELING AND LOCATION

FCC ID Label

SmartUFO
Model NO.: SmartUFO
Input Rating: DC 3.7V/ 400mA
FCC ID: 2ADMG-SMARTUFO

FCC ID Label Location



The label shown shall be permanently affixed at a conspicuous location on the device and be readily visible to the user at the time purchase (Labeling requirements per 2.925)