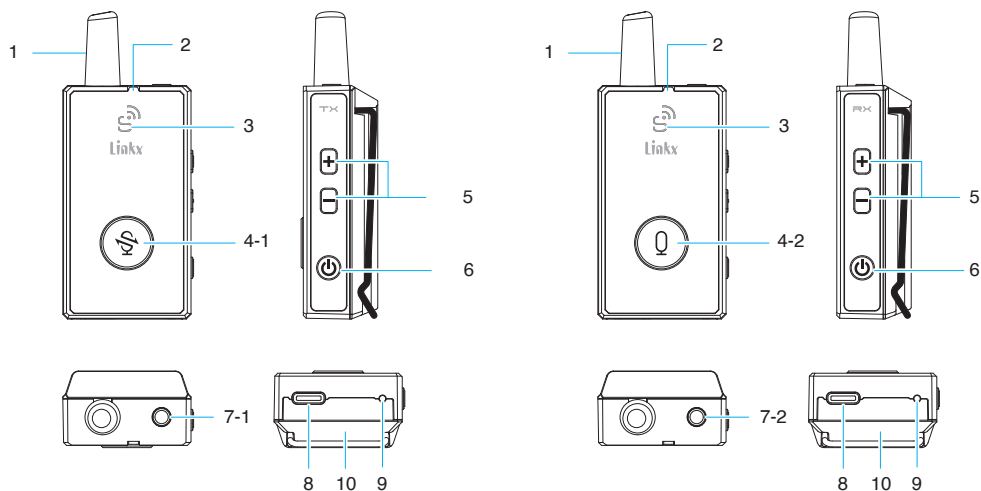


SG-T2 & SG-T2Plus Transmitter

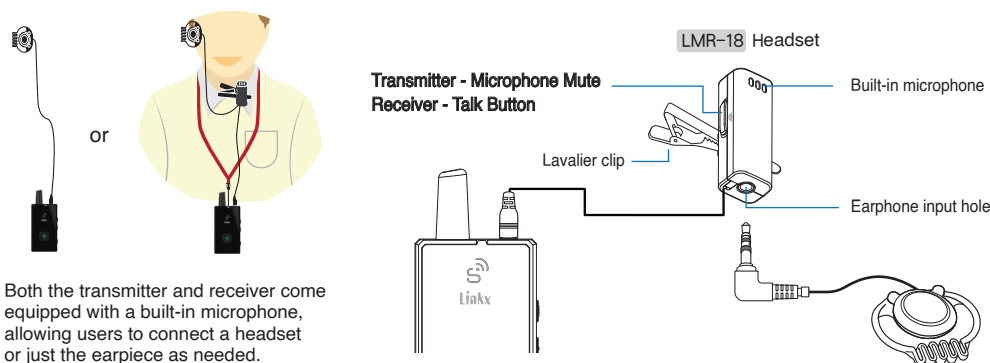
SG-R2 & SG-R2L Receiver



- | | | |
|---------------------------------------|------------------------------------|---------------------------|
| 1. Antenna | 5. Earphone volume adjustment | 9. Force Shut Down button |
| 2. Battery indicator | 6. Power button | 10. Battery compartment |
| 3. System status indicator | 7-1. Headset connector | |
| 4-1. Two-way start / Mute button | 7-2. Headset or Earphone connector | |
| 4-2. Push to Talk button (SG-R2 only) | 8. USB-C charging port | |

Connected to a headset or earpiece:

- Connect the headset to the 3.5mm socket on the transmitter and the earphones to the 3.5mm socket on the receiver. Make sure the connectors are properly inserted in place.



Both the transmitter and receiver come equipped with a built-in microphone, allowing users to connect a headset or just the earpiece as needed.

How to adjust the Volume

- Pressing the or button can decrease or increase the headphone volume.

Automatic clean frequency scan

- The Smart Go-series has a built-in automatic clean frequency scanning function that will run full-time to avoid interference and requires no additional operations.

Two-Way communication function

Choose SG-T2 or SG-T2Plus transmitter to determine the number of people speaking at the same time:

- With the SG-T2, the transmitter and one receiver (SG-R2) can speak simultaneously.
 - With the SG-T2Plus, the transmitter and two receivers (SG-R2) can speak simultaneously.
- All participants can hear the entire conversation.

Status and indicator light description

One-way

	System status indicator	Description of condition	Operation method
	Blue	Power on	Press the side power button
TX	Slow Blue flashing (T2 / T2Plus)	Mic Mute	Press the mute button briefly to mute the transmitter, press the same button again to recover
RX	Fast Blue flashing (R2 / R2L)	No transmitter signal received	Make sure the transmitter is powered on and the receiver is paired with it.

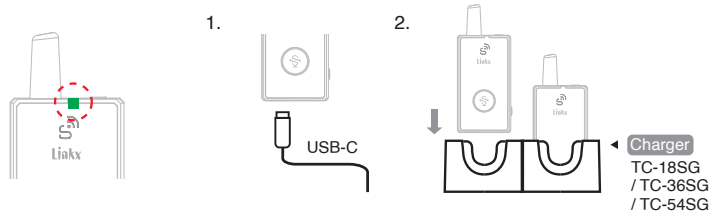
Two-way

	System status indicator	Description of condition	Operation method
TX	Green	Two-way mode on (depending on the transmitter model selected, the system allows one or two receivers to speak .)	Press the front button for 3 seconds to turn on the two-way communication function
	Slow Green flashing	Mic Mute	Press the mute button briefly to mute the transmitter, press the same button again to recover
	² Green flashes twice	There is a call coming from the receiver.	—
RX	Green	Two-way mode on	—
	² Green flashes twice	There is a call coming from the receiver.	—
	⁵ Green flashes five times	The receiver is sending a call	SG-R2 only 1. Press and held the front talk button to talk 2. Double click the front talk button to enter the continuous call status

Energy Saving: The transmitter will automatically shut down after 20 minutes of muted, and the receiver will automatically shut down after approximately 20 minutes without receiving a signal.

Battery Level and Charging

- 1 Recharge the battery immediately via USB-C certified traveling charger (optional accessories) or appropriated Linkx charger station.



State of charge

Battery indicator color	Battery percentage
When in use (15 hours of use on a full charge)	
■ No light	> 30%
■ Red flashing	< 20%
■ Red	< 10%

While charging	
♦ Fast charging takes about 2 hours. ♦ Dedicated charging station takes about 5 hours.	
■ Green	100%
■ Green flashing	> 60%
■ Red	0 - 60%

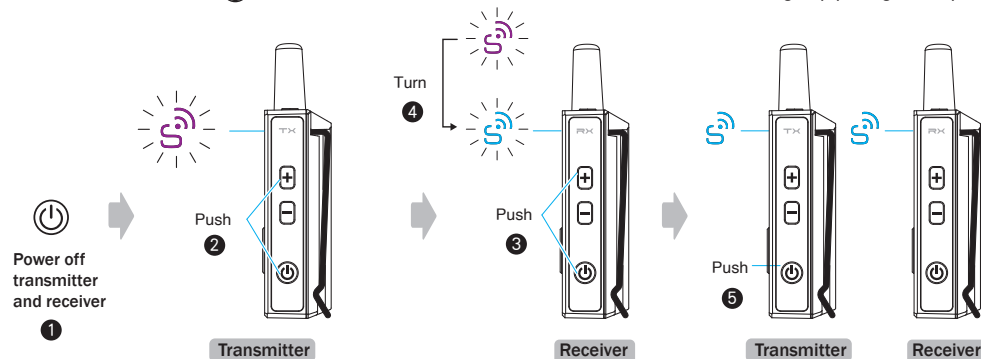
- 2 The transmitter or receiver will shut down automatically when charging is taking place. If you want to use the system while it's charging, simply press the power button again to turn the system back on.

Group Pairing

The Group Pairing feature enables one or more receivers to join an existing group, or form a new group. Within the same group, the receiver and transmitter frequencies and sounds will be synchronized.

• How to pair the receiver to the transmitter

1. Power off the transmitter and receiver first.
2. Transmitter : Press the and button at the same time until the purple light flashes.
3. Receiver : Press the and button at the same time, the purple light will flash and the search will start.
If connected to the transmitter, the light will turn to flashing blue.
4. Confirm that all receivers have completed the search (flashing blue)
5. Press the transmitter button, the transmitter and receiver indicators will turn blue, and group pairing is completed.



FCC Interference Statement

This equipment has been tested and found to comply with the limits for a Class B digital device, pursuant to Part 15 of the FCC Rules. These limits are designed to provide reasonable protection against harmful interference in a residential installation.

This equipment generates, uses and can radiate radio frequency energy and, if not installed and used in accordance with the instructions, may cause harmful interference to radio communications. However, there is no guarantee that interference will not occur in a particular installation. If this equipment does cause harmful interference to radio or television reception, which can be determined by turning the equipment off and on, the user is encouraged to try to correct the interference by one of the following measures:

- Reorient or relocate the receiving antenna.
- Increase the separation between the equipment and receiver.
- Connect the equipment into an outlet on a circuit different from that to which the receiver is connected.
- Consult the dealer or an experienced radio/TV technician for help.

This device complies with Part 15 of the FCC Rules. Operation is subject to the following two conditions:

- (1) This device may not cause harmful interference, and
- (2) This device must accept any interference received, including interference that may cause undesired operation.

FCC Caution: To assure continued compliance, any changes or modifications not expressly approved by the party responsible for compliance could void the user's authority to operate this equipment. (Example - use only shielded interface cables when connecting to computer or peripheral devices).

FCC Radiation Exposure Statement

This equipment complies with FCC RF radiation exposure limits set forth for an uncontrolled environment. This equipment should be installed and operated with a minimum distance of 0.5 centimeters between the radiator and your body.

This transmitter must not be co-located or operating in conjunction with any other antenna or transmitter.

The antennas used for this transmitter must be installed to provide a separation distance of at least 0.5 cm from all persons and must not be co-located or operating in conjunction with any other antenna or transmitter.