

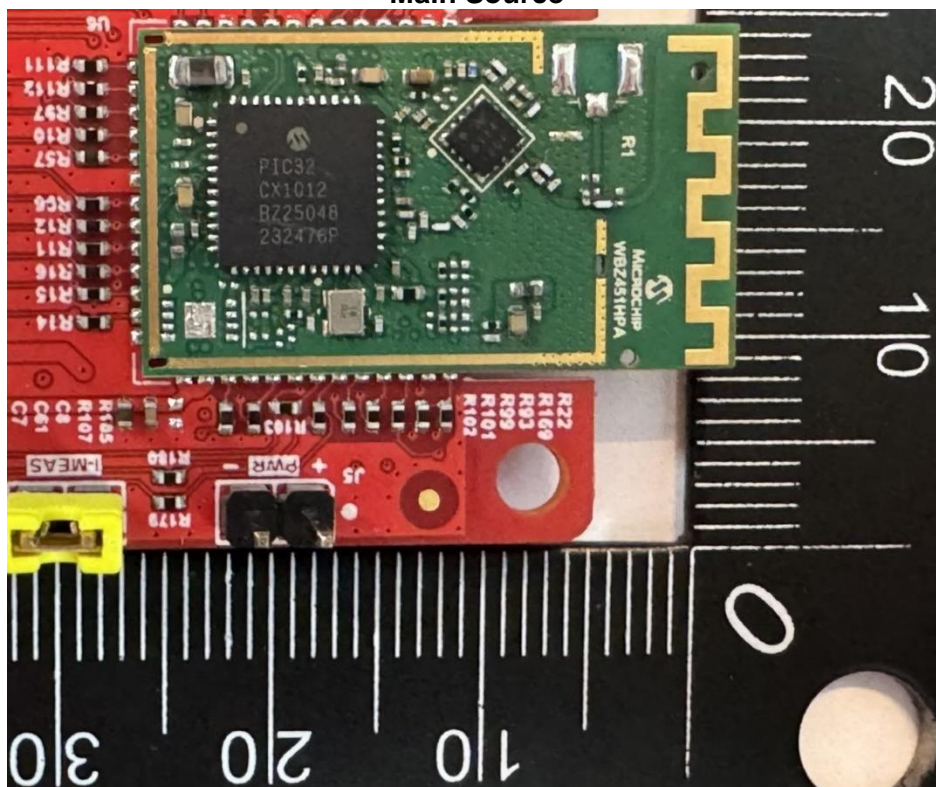
CN243V4O 001
CN242VUR 001
CN24781V 001
CN2456YB 001
CN24S3LR 001
CN24N36Q 001

Page 4 of 15

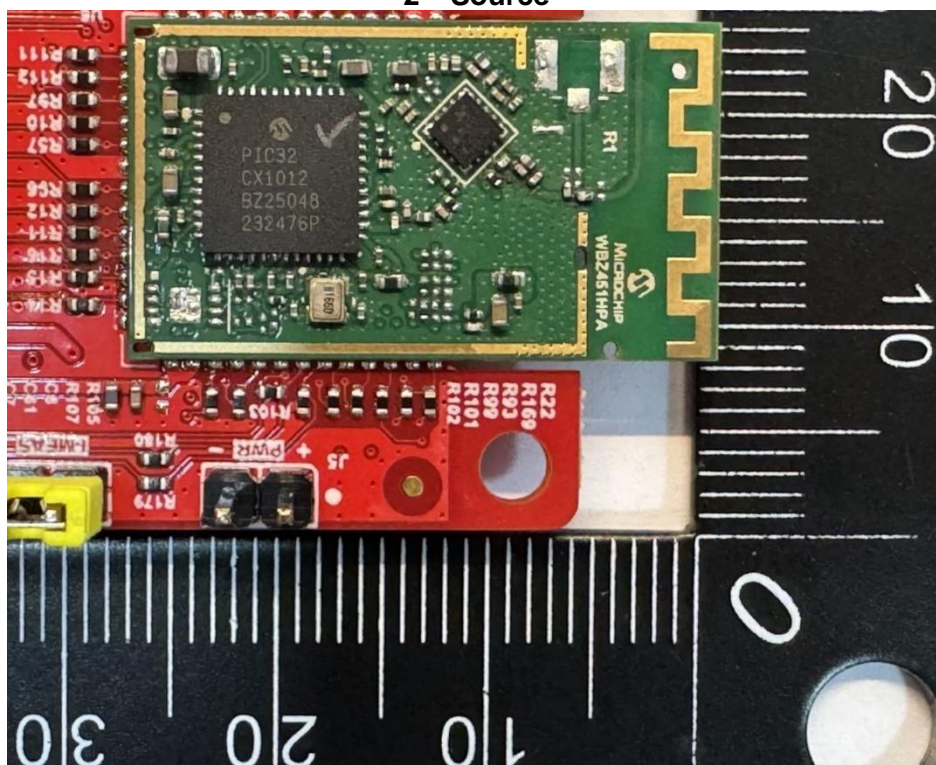
Product: Wireless MCU module with BLE 5.2 compliant and Zigbee 3.0 Radio

Type Identification: WBZ451HPE, WBZ451HUE

<WBZ451HPE>
Main Source



2nd Source

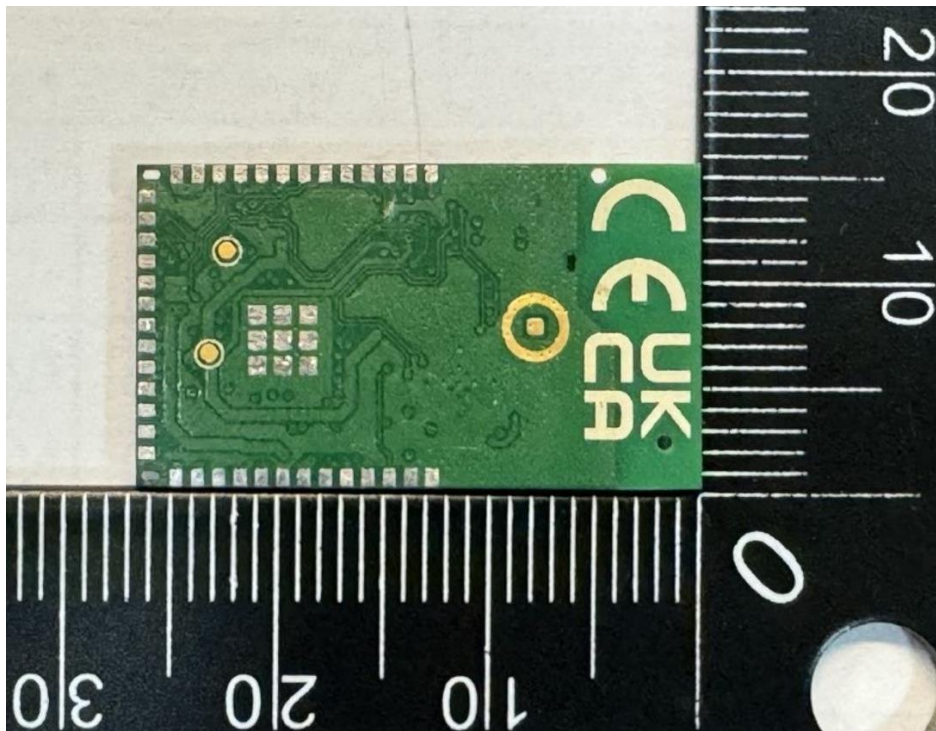
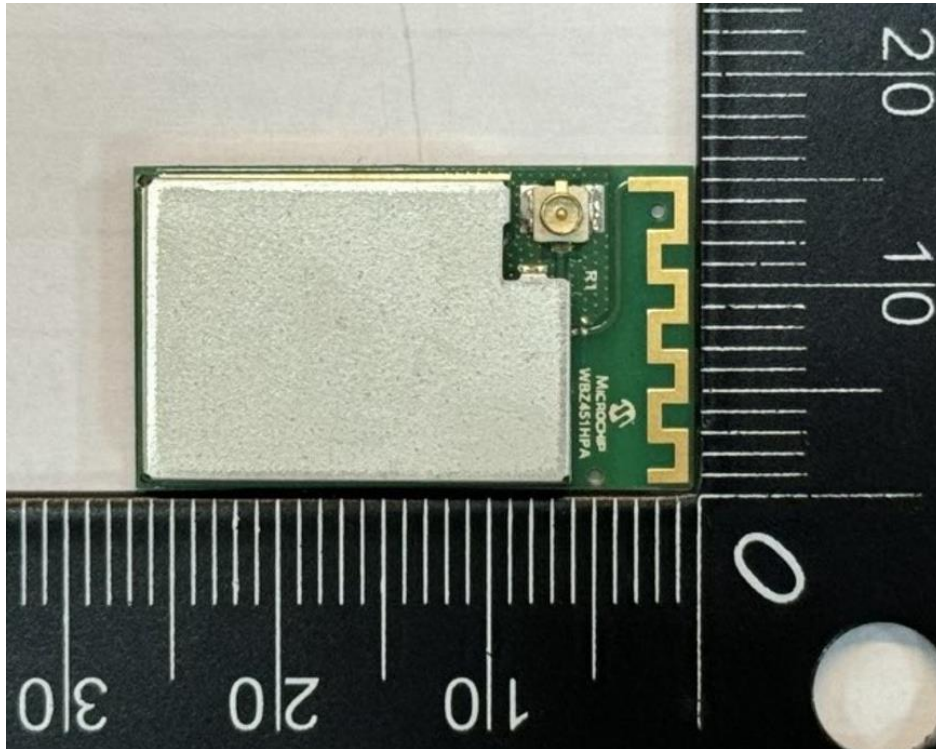


CN243V4O 001
CN242VUR 001
CN24781V 001
CN2456YB 001
CN24S3LR 001
CN24N36Q 001

Page 5 of 15

Product: Wireless MCU module with BLE 5.2 compliant and Zigbee 3.0 Radio
Type Identification: WBZ451HPE, WBZ451HUE

<WBZ451HUE>



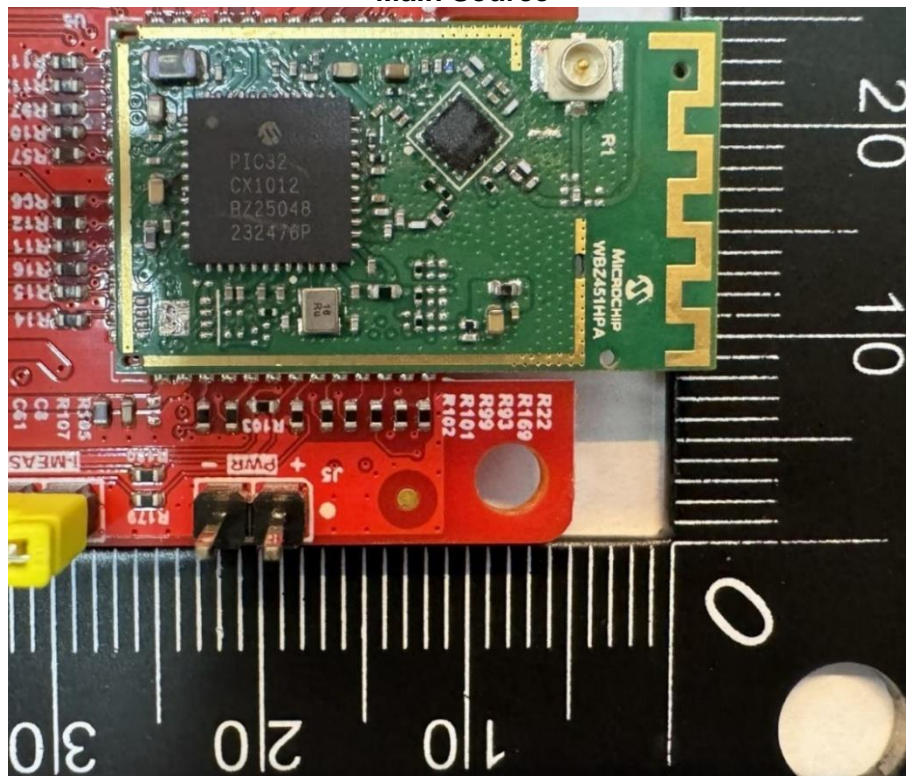
CN243V4O 001
CN242VUR 001
CN24781V 001
CN2456YB 001
CN24S3LR 001
CN24N36Q 001

Page 8 of 15

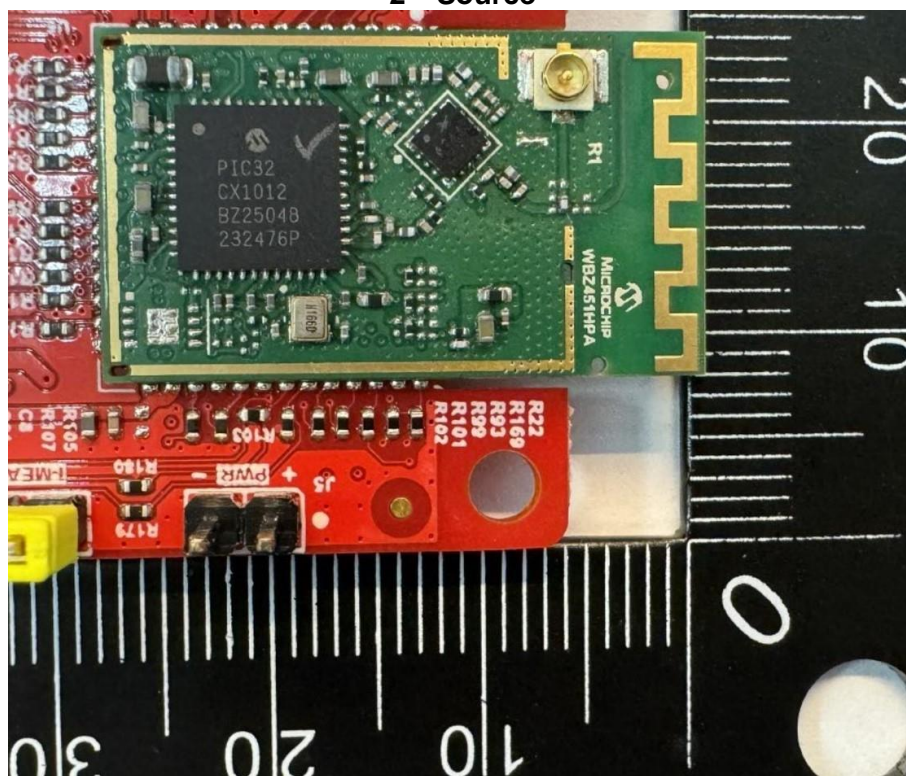
Product: Wireless MCU module with BLE 5.2 compliant and Zigbee 3.0 Radio

Type Identification: WBZ451HPE, WBZ451HUE

<WBZ451HUE>
Main Source



2nd Source

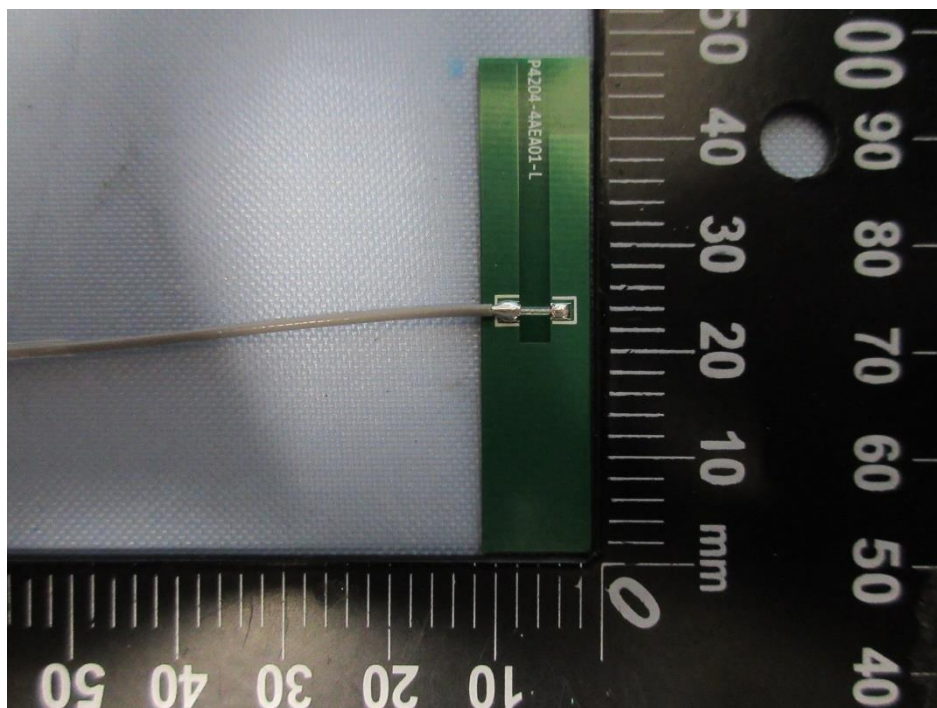
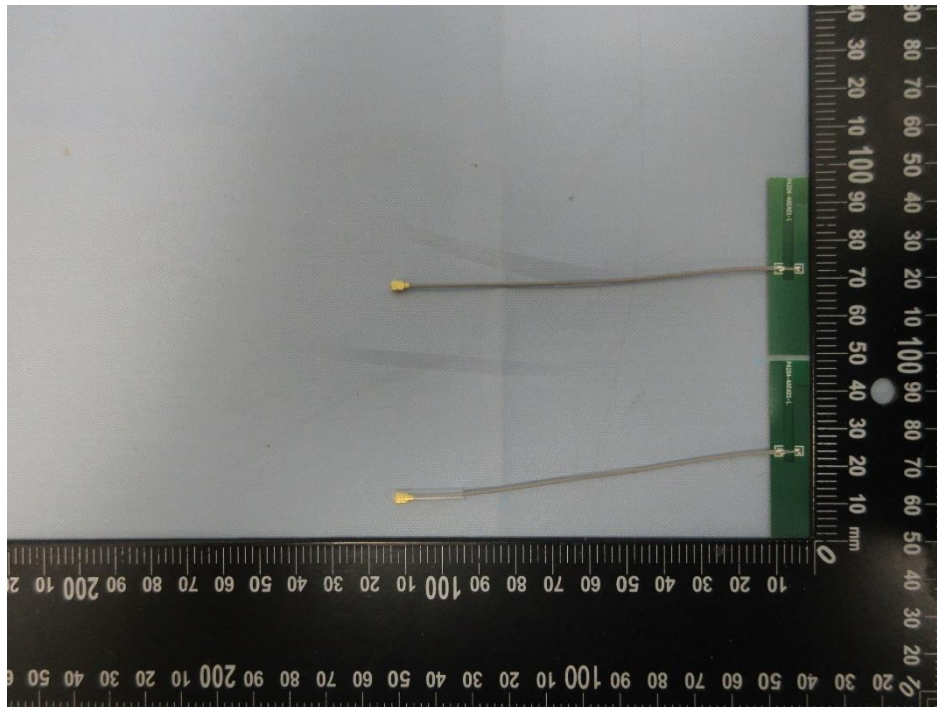


CN243V4O 001
CN242VUR 001
CN24781V 001
CN2456YB 001
CN24S3LR 001
CN24N36Q 001

Page 9 of 15

Product: Wireless MCU module with BLE 5.2 compliant and Zigbee 3.0 Radio
Type Identification: WBZ451HPE, WBZ451HUE

Ant 1

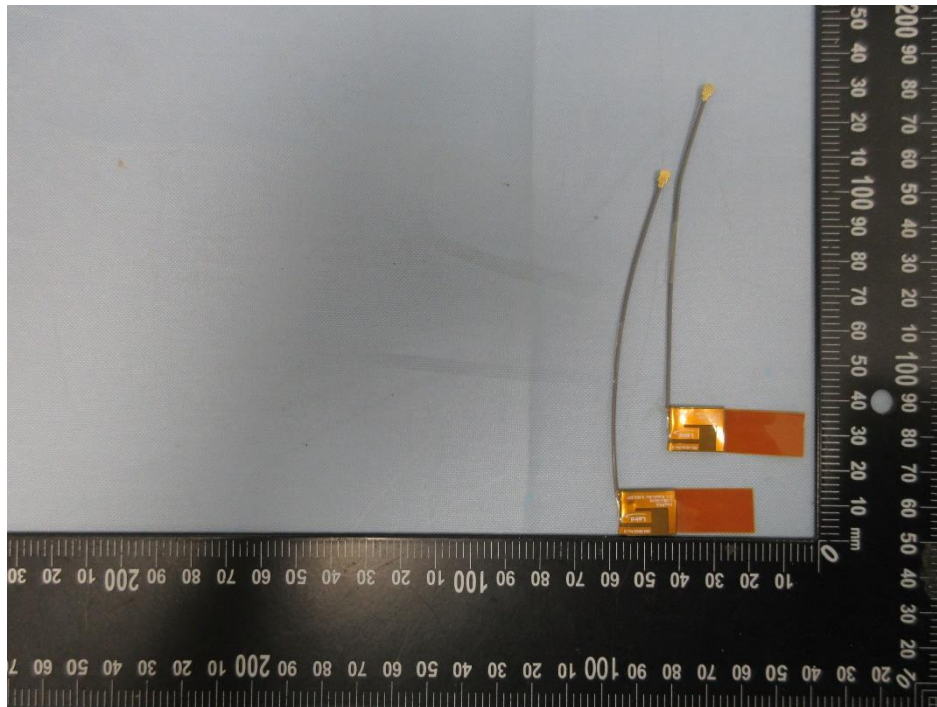


CN243V4O 001
CN242VUR 001
CN24781V 001
CN2456YB 001
CN24S3LR 001
CN24N36Q 001

Page 10 of 15

Product: Wireless MCU module with BLE 5.2 compliant and Zigbee 3.0 Radio
Type Identification: WBZ451HPE, WBZ451HUE

Ant 2

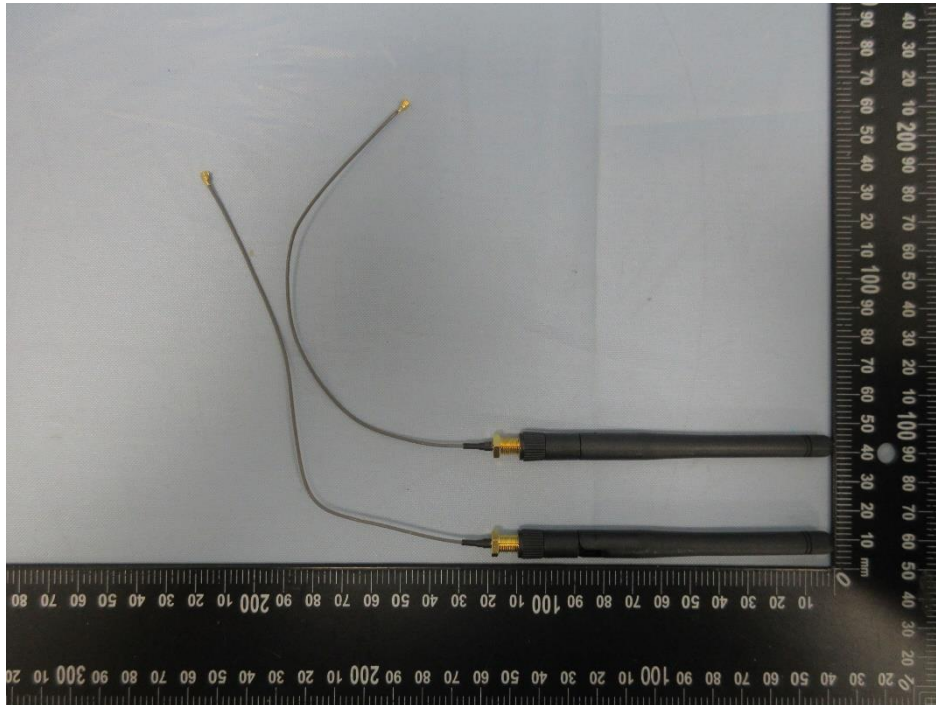


CN243V4O 001
CN242VUR 001
CN24781V 001
CN2456YB 001
CN24S3LR 001
CN24N36Q 001

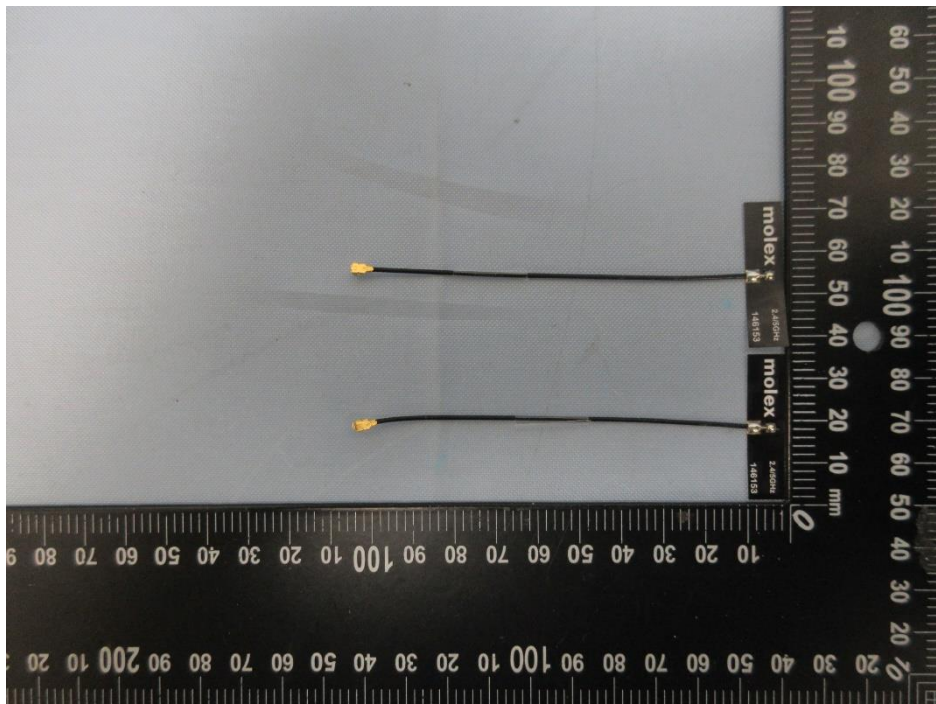
Page 11 of 15

Product: Wireless MCU module with BLE 5.2 compliant and Zigbee 3.0 Radio
Type Identification: WBZ451HPE, WBZ451HUE

Ant 3



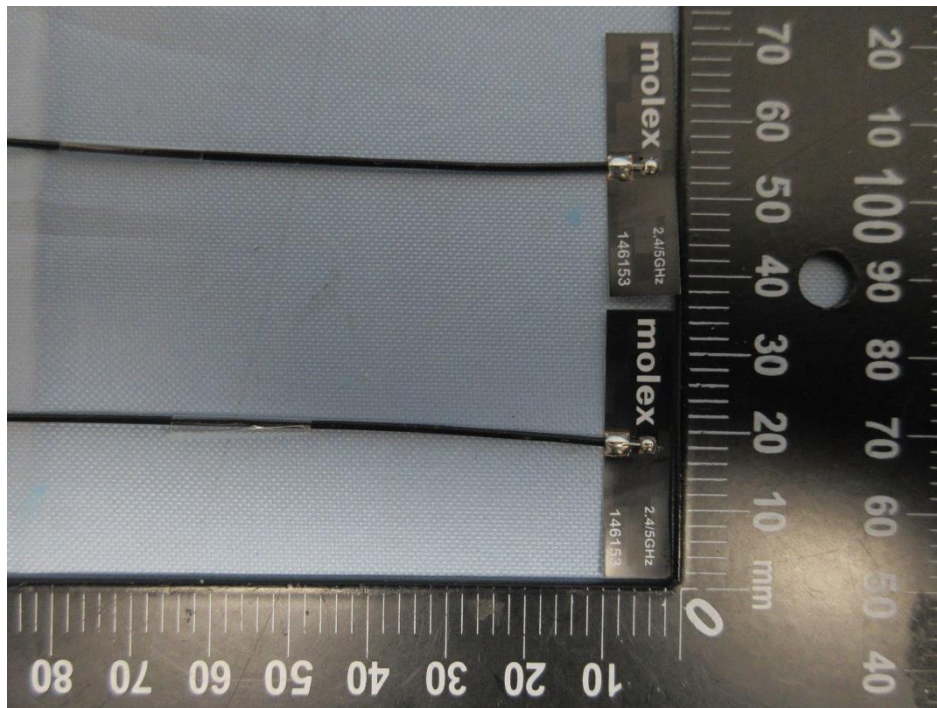
Ant 4



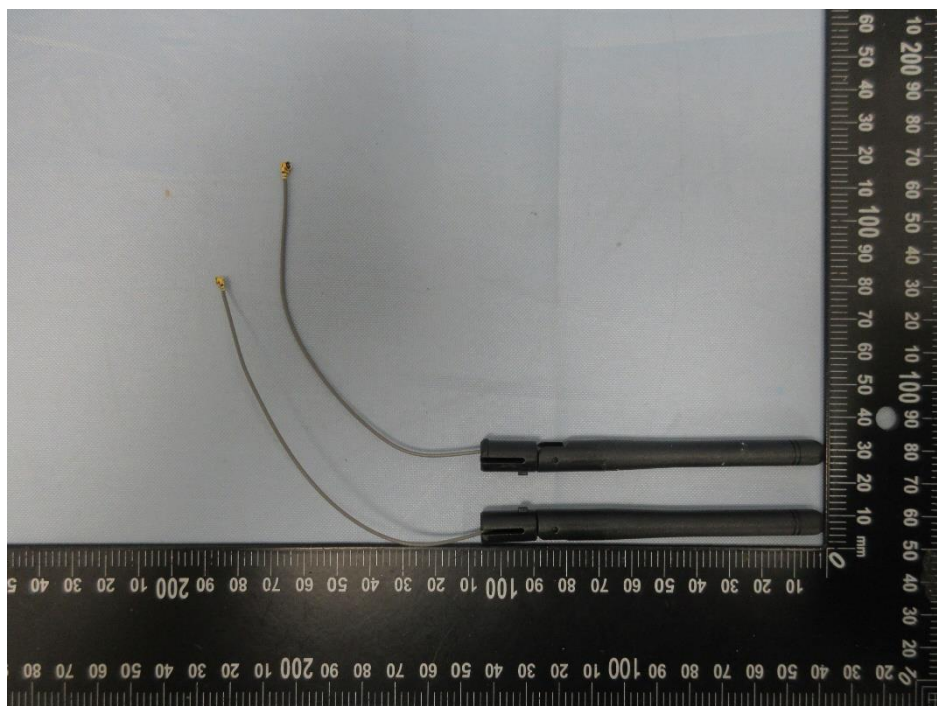
CN243V4O 001
CN242VUR 001
CN24781V 001
CN2456YB 001
CN24S3LR 001
CN24N36Q 001

Page 12 of 15

Product: Wireless MCU module with BLE 5.2 compliant and Zigbee 3.0 Radio
Type Identification: WBZ451HPE, WBZ451HUE



Ant 5

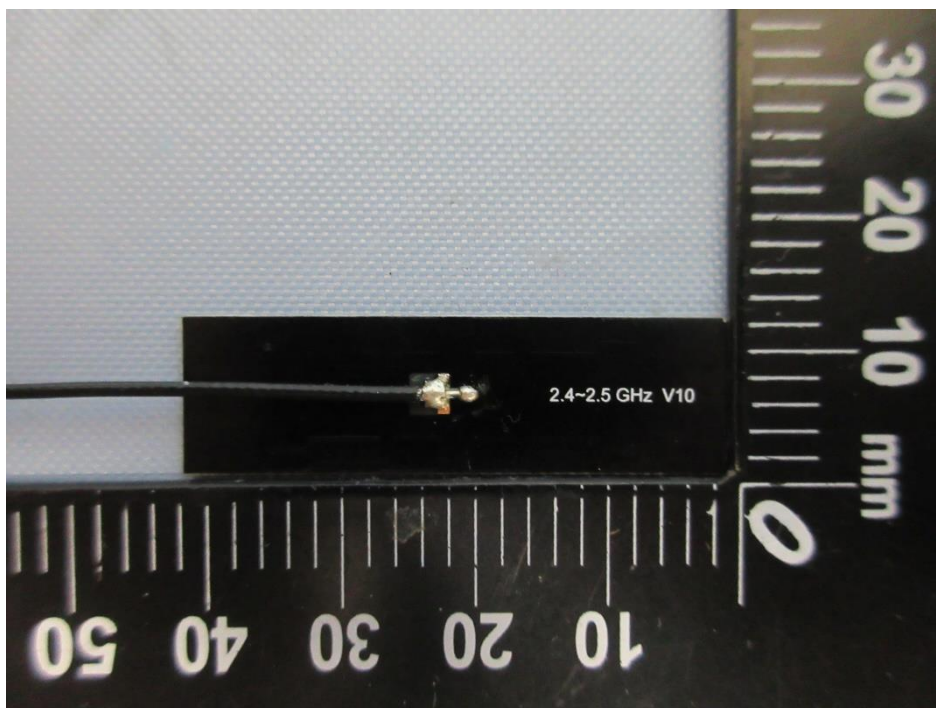
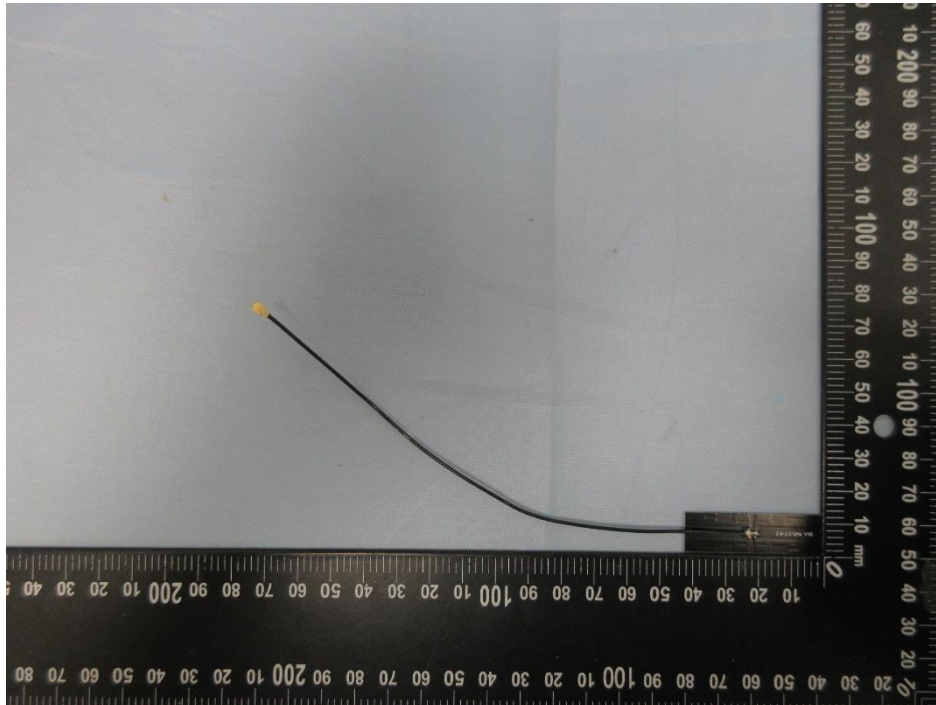


CN243V4O 001
CN242VUR 001
CN24781V 001
CN2456YB 001
CN24S3LR 001
CN24N36Q 001

Page 13 of 15

Product: Wireless MCU module with BLE 5.2 compliant and Zigbee 3.0 Radio
Type Identification: WBZ451HPE, WBZ451HUE

Ant 6

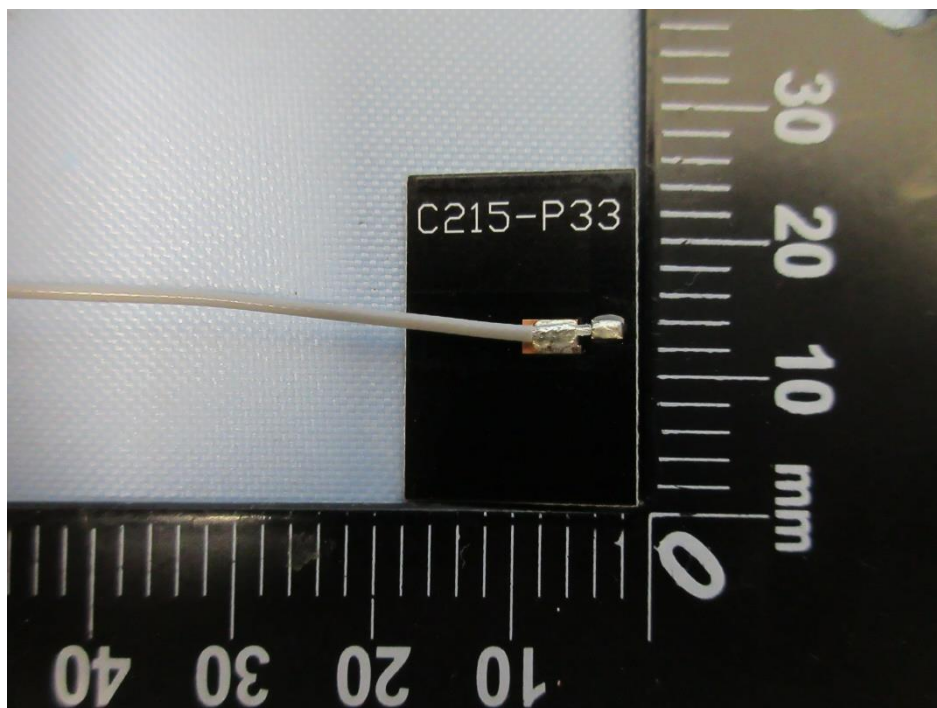
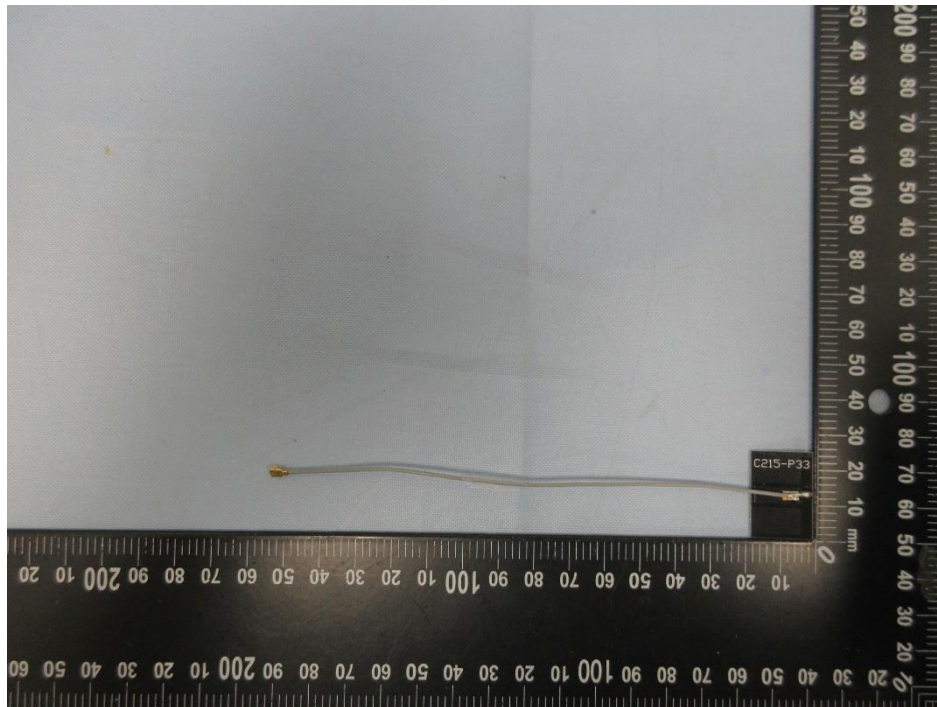


CN243V4O 001
CN242VUR 001
CN24781V 001
CN2456YB 001
CN24S3LR 001
CN24N36Q 001

Page 14 of 15

Product: Wireless MCU module with BLE 5.2 compliant and Zigbee 3.0 Radio
Type Identification: WBZ451HPE, WBZ451HUE

Ant 7



CN243V4O 001
CN242VUR 001
CN24781V 001
CN2456YB 001
CN24S3LR 001
CN24N36Q 001

Page 15 of 15

Product: Wireless MCU module with BLE 5.2 compliant and Zigbee 3.0 Radio
Type Identification: WBZ451HPE, WBZ451HUE

Ant 8

