

Equipment Authorization measurements on 5150-5250 MHz RLAN

FCC ID: 2ADEFAT-DG2

Test object

Product name: Airtame 2

Product model of Airtame 2: AT-DG2

Product number: 18

HW Revision: Airtame_DG2_V7_RB

FW Revision: 3.3.0

RISE Research Institutes of Sweden AB

Electronics - EMC

Performed by

Examined by

Ermin Pasalic

Monika Fuller

RISE Research Institutes of Sweden AB

Postal address

Box 857
SE-501 15 BORÅS
Sweden

Office location

Brinellgatan 4
SE-504 62 BORÅS

Phone / Fax / E-mail

+46 10 516 50 00
+46 33 13 55 02
info@ri.se

Laboratories are accredited by the Swedish Board for Accreditation and Conformity Assessment (SWEDAC) under the terms of Swedish legislation. This report may not be reproduced other than in full, except with the prior written approval of the issuing laboratory.



Table of Content

Photos.....	3
-------------	---

Photos

AT-DG2

Top view



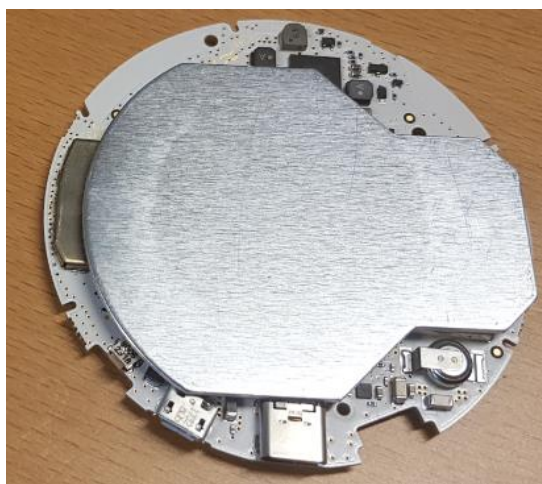
Bottom view



AT-DG2, Inside view



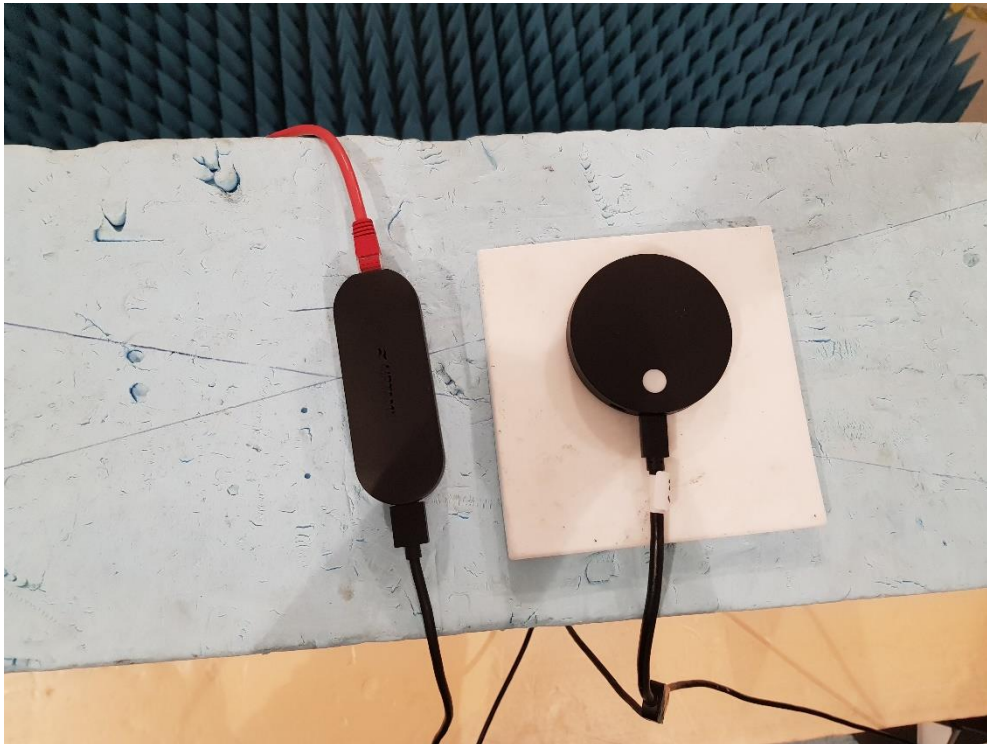
Inside view, top of PCB



Inside view, bottom of PCB

The test set-up during the radiated tests can be seen in the pictures below.

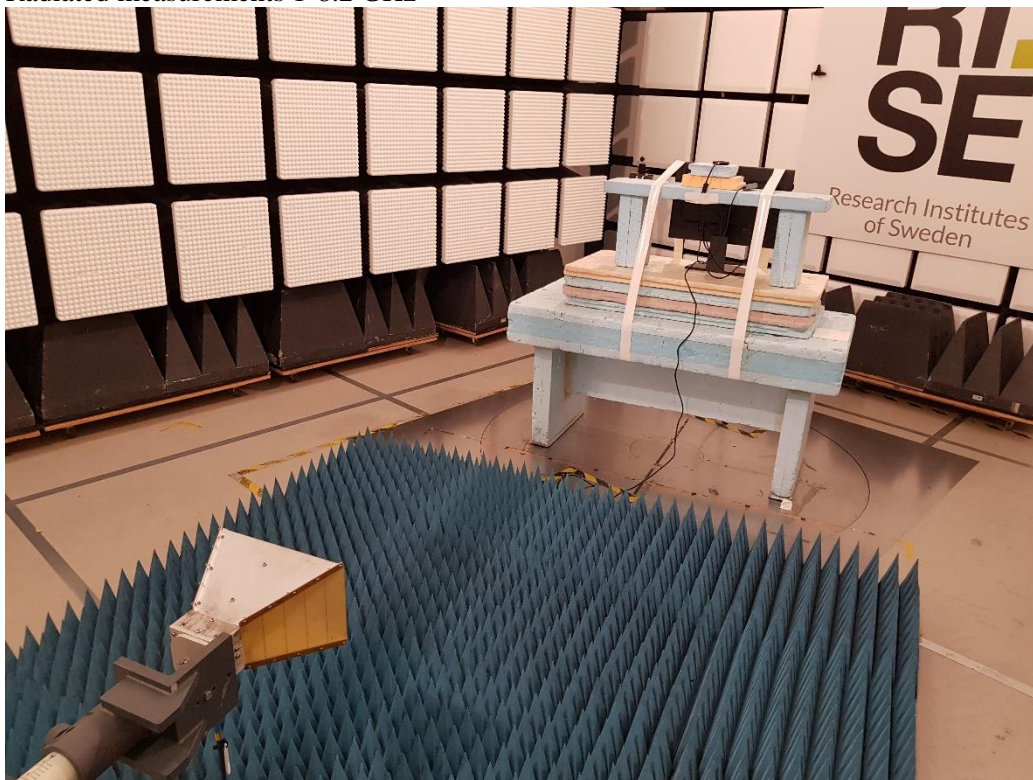
EUT



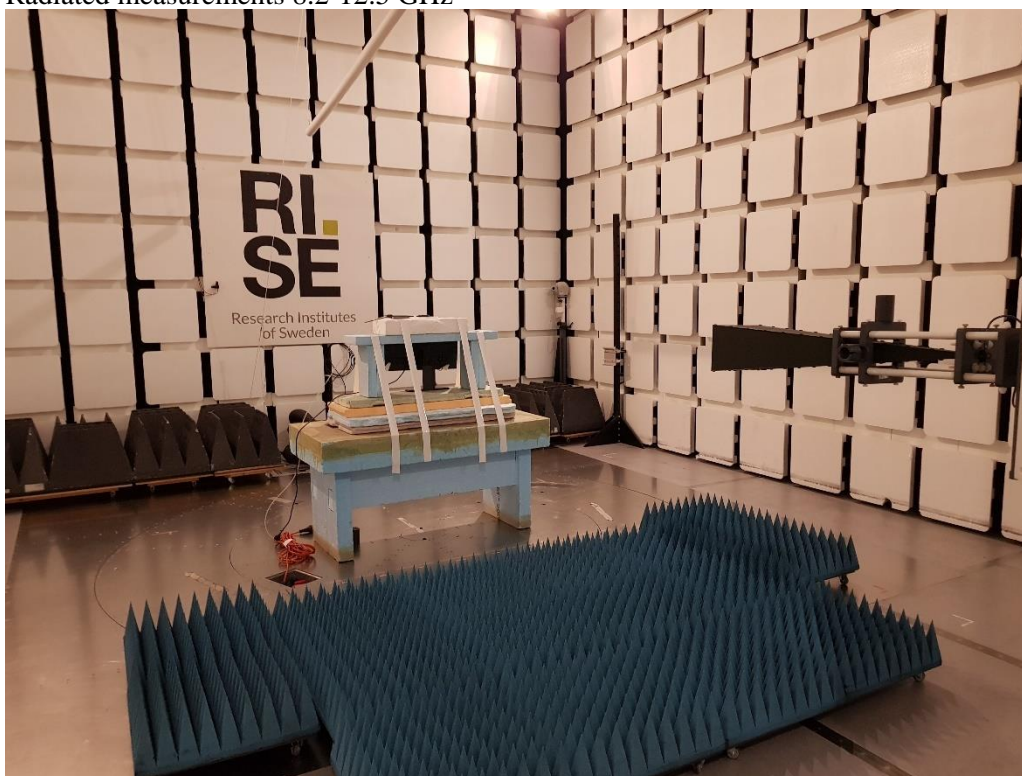
Radiated measurements 30-1000 MHz



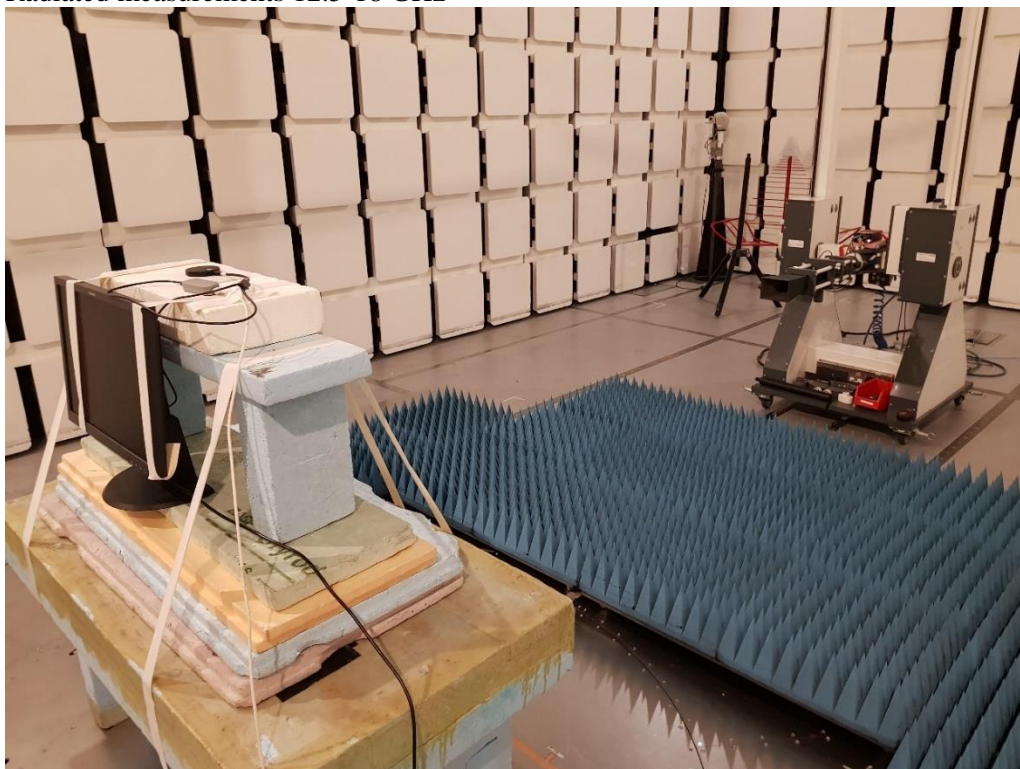
Radiated measurements 1-8.2 GHz



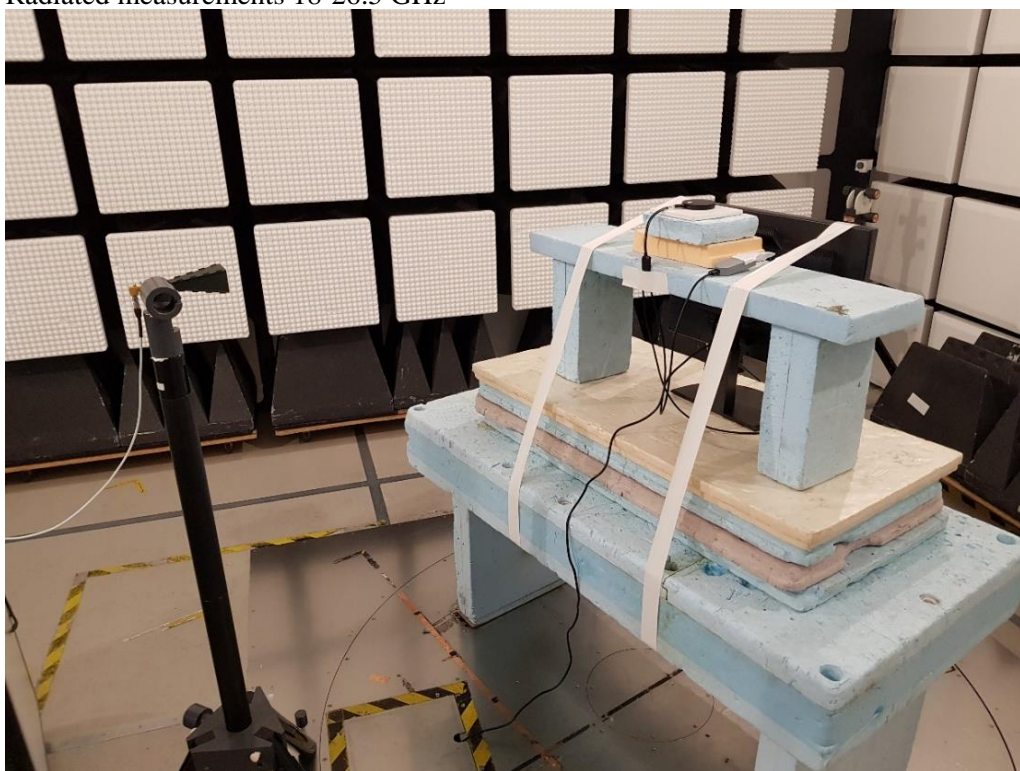
Radiated measurements 8.2-12.5 GHz



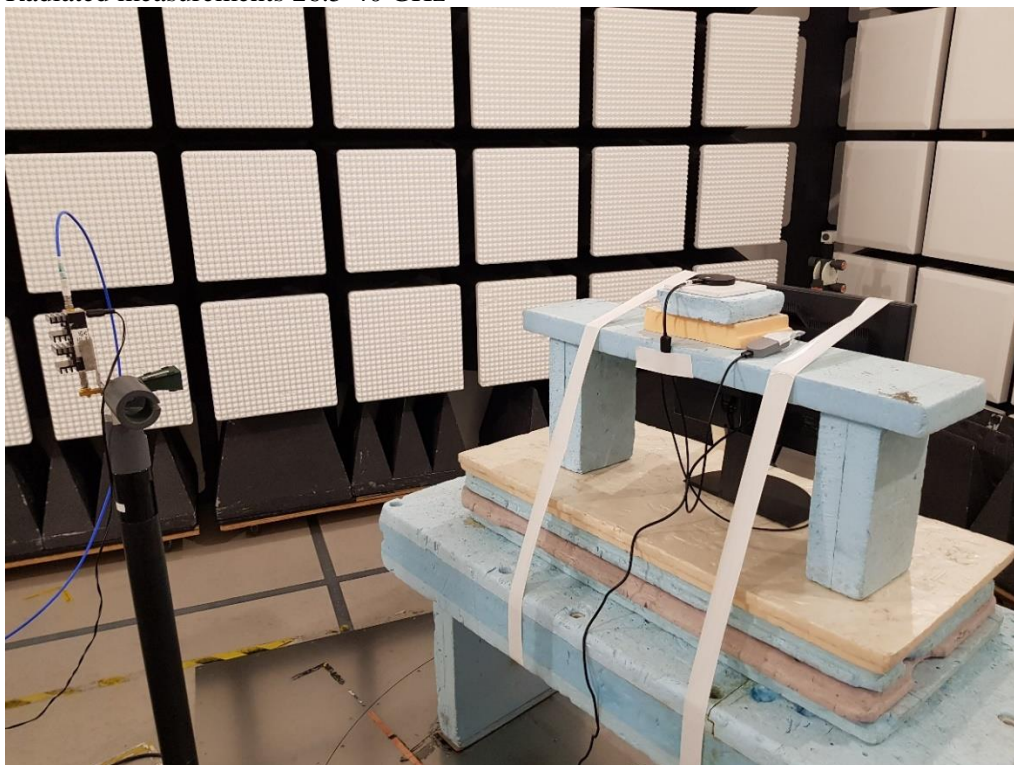
Radiated measurements 12.5-18 GHz



Radiated measurements 18-26.5 GHz



Radiated measurements 26.5-40 GHz



The test set-up during the conducted emission tests can be seen in the pictures below:



The test set-up during the radio tests in conductive mode can be seen in the picture below.

