

iData[®]

iData T1 UHF

User Manual

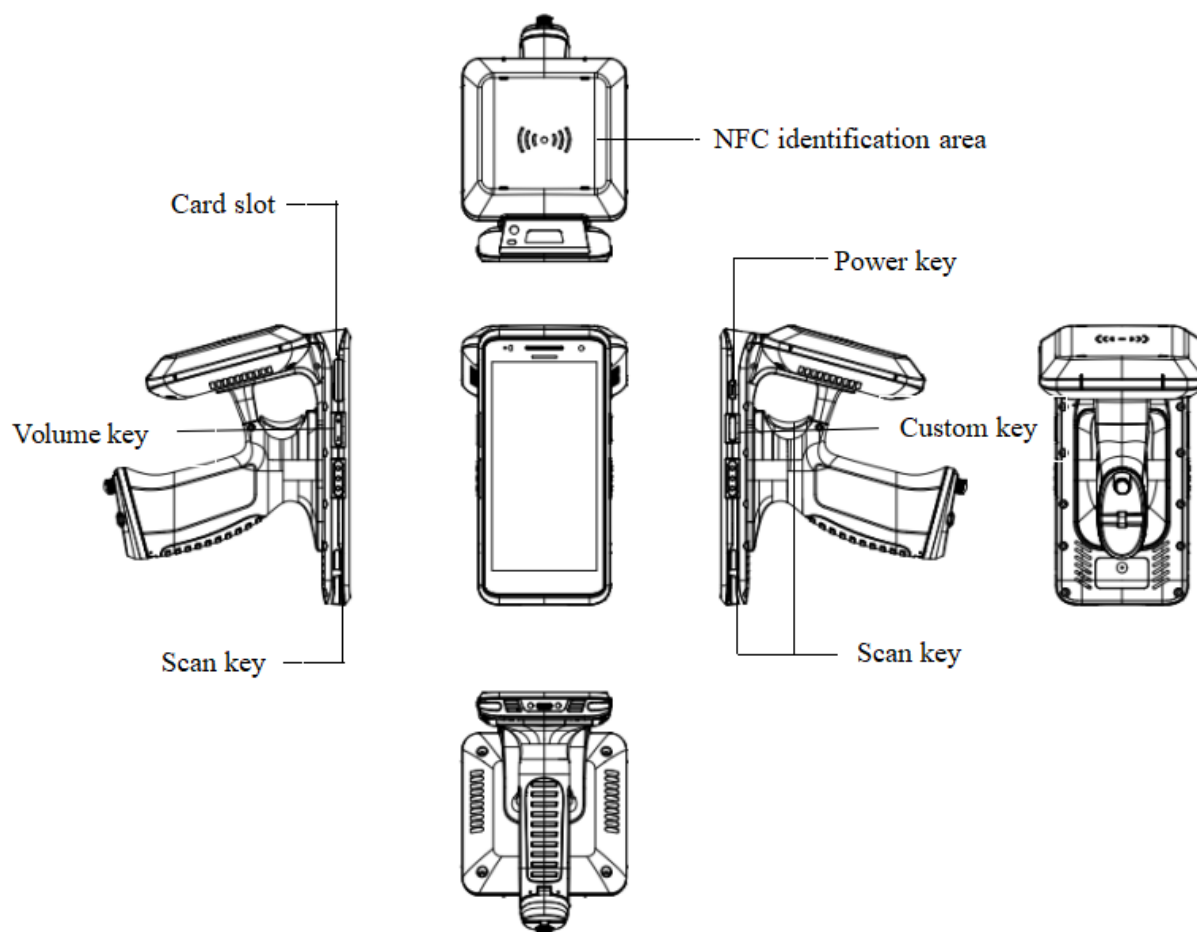
Version: V1.0

Contents

1 Introduction.....	1
1.1 iData T1 UHF appearance.....	1
1.2 Battery charging.....	1
2 How to use iData T1 UHF.....	3
2.1 Turn on/off the device	3
2.2 Lock/unlock the device.....	3
2.3 Home screen	4
2.4 Status icons and indicators.....	4
2.5 Basic settings	5
2.5.1 Date & Time setting.....	5
2.5.2 Display setting.....	6
2.5.3 Ringtone setting.....	6
2.5.4 Safety setting.....	7
2.5.5 Language & Keyboard setting.....	8
2.5.6 Shortcut.....	9
3 Network and connection synchronization	9
3.1 Data connection (optional)	9
3.2 Wi-Fi network connection.....	12
3.3 Bluetooth.....	12
3.4 Computer connection by USB.....	14
4 iData T1 UHF scan demonstration	15
4.1 Install and use iScan Plus.....	15
5 How to manage iData T1 UHF.....	15
5.1 Program software installation.....	16
5.2 Uninstall the installer.....	16
6 Precautions and troubleshooting.....	18
6.1 iData T1 UHF precautions	18
6.2 Troubleshooting	19

1 Introduction

1.1 iData T1 UHF appearance



1.2 Battery charging

The battery can be charged by:

Method 1: a USB cable.

Method 2: The bottom charger*.

Method 3: The single charging cradle*.

Method 4: The 4-slot charging cradle*.

Note: Those marked with * need to be purchased separately.

When it's charging, the LED indicator light is red;

When it's fully charged, the LED indicator light turns green;

When the battery is low, iData T1 UHF will display a warning message;

When the battery is too low, iData T1 UHF will shut down automatically .

★ Attention

The battery charging time may be around 3 hours. Interrupted charging will not do damage to the battery. The battery life is determined by the different usage conditions of iData T1 UHF. For example, the usage of different functions, the usage patterns, the variable charging time , and data transfer conditions, etc.

★ Reminder

To ensure that iData T1 UHF has a longer standby time, please follow the tips as below:

- ◆ Connect the device to a DC power supply for charging while it's not in use;
- ◆ Shorten the sleep mode timer in *Settings* (Steps: *Home>Applications>Settings>>Display>Sleep*);
- ◆ Turn off all radio activity, WiFi, Bluetooth, etc. when it's not in use.

□

2 How to use iData T1 UHF

2.1 Turn on/off the device

After being fully charged, you can start using iData T1 UHF.

1. When turning on the device, press and hold the on/off button in the upper right corner of the device for a few seconds, the device will display the boot screen, and enter the system desktop after the boot progress is completed. It will take some time for device initialization, please wait patiently.
2. When turning off the device, press and hold the on/off button in the upper right corner of the device for a few seconds, and a shutdown option dialog box will pop up, click *Power-Shutdown* to turn off the device.

2.2 Lock and unlock the device

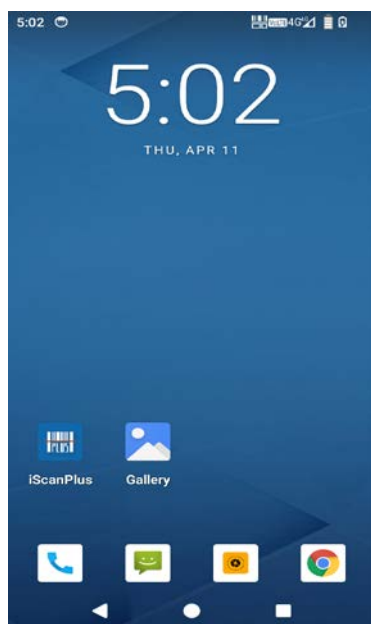
Lock the device

Short press the power on/off key to lock the device. If you do not run the device within the system default or screen lock time, the device will be locked automatically.

Unlock the device

Short press the on/off button, and slide up the unlock option on the main screen to unlock

2.3 Home screen



iData T1 UHF device has 1 home screen, which can be switched by sliding up on the screen. Tap the corresponding icon to open the application displayed on home screen.

★ Reminder

- ◆ You can add or delete program icons on the main screen as you please;
- ◆ Tap the application tray to view all APPs.

2.4 Status icons and indicators

The status icons and indicators are located on the status bar at the top of the screen and display device status information and notifications.

Table 2-1 Status icons

Icon	Description	Icon	Description
	WLAN		Data signal
	Bluetooth		Airplane mode

	USB connection		Limited network access
	Battery charging		USB debugging
	Fully charged		Mute mode

★ Note

The device software is upgraded constantly, and the status indicator may be different from the ones displayed on screen, please refer to the actual situation.

2.5 Basic settings

2.5.1 Date & Time setting

You can update the date and time on your device if needed.

Find this icon:

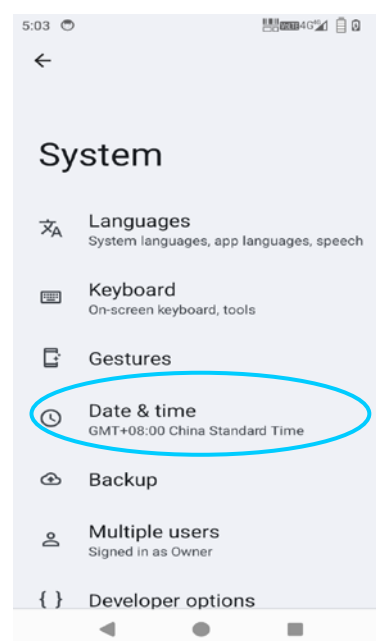
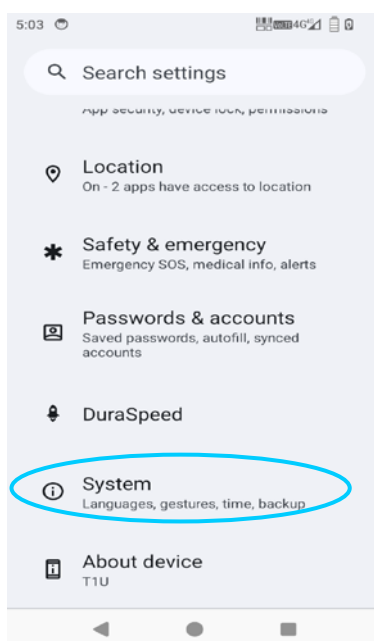
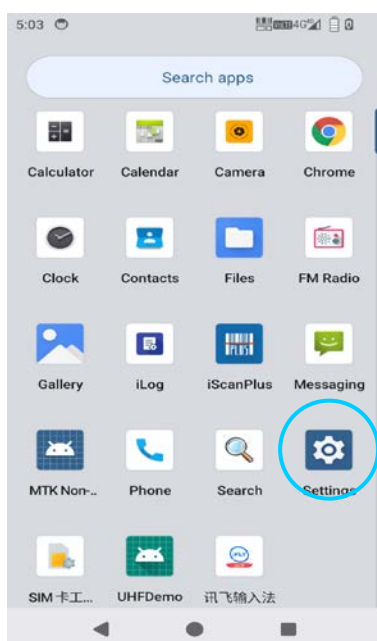


->Setting

->System

->Date & Time

->Set the date or Time



2.5.2 Display setting

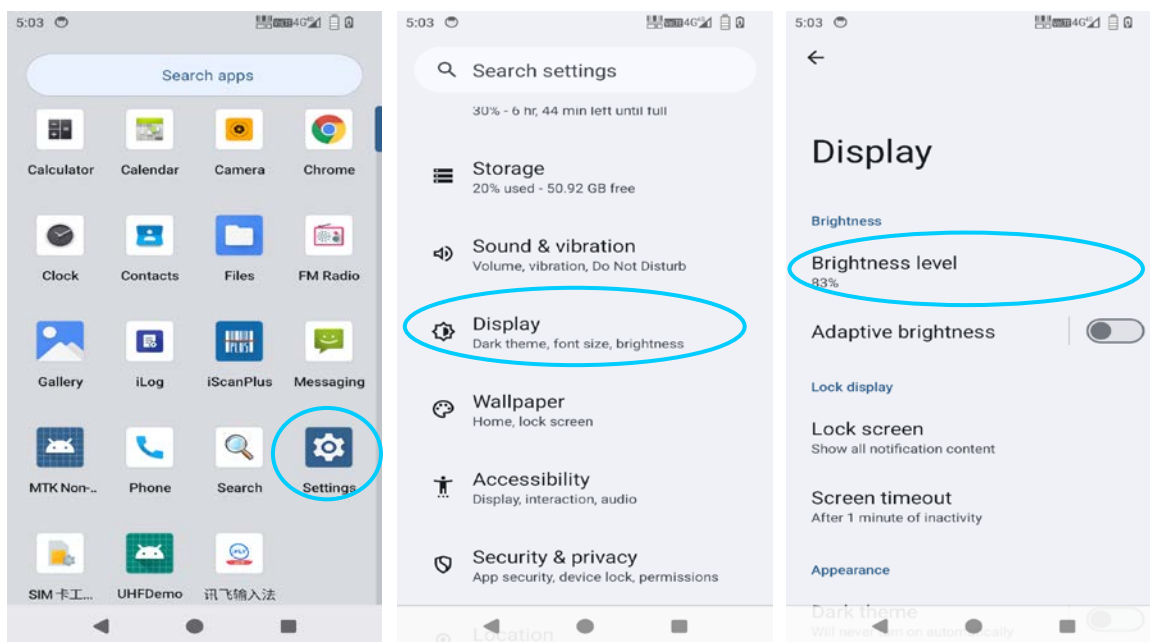
Find this icon:



->Setting

->Display

->Lightness/Wallpaper/Sleep



2.5.3 Ringtone setting

Find this icon:

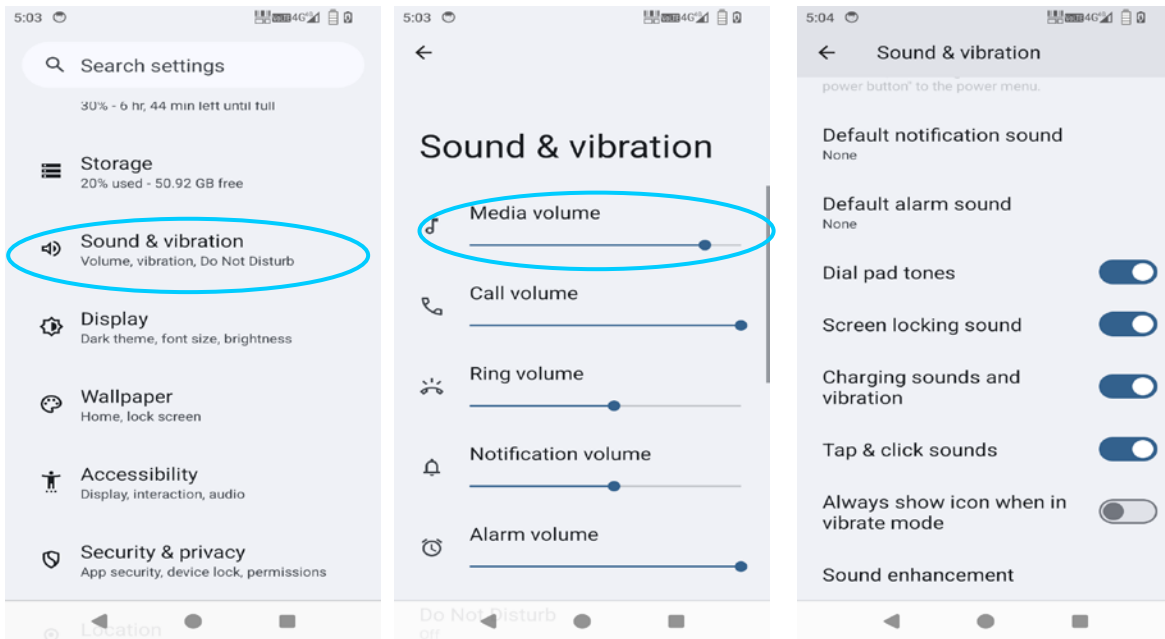


->Setting

->Sounds

->Media/Alert/Ringtone volume

->Click *Advanced* to enter the next level of Sounds general settings



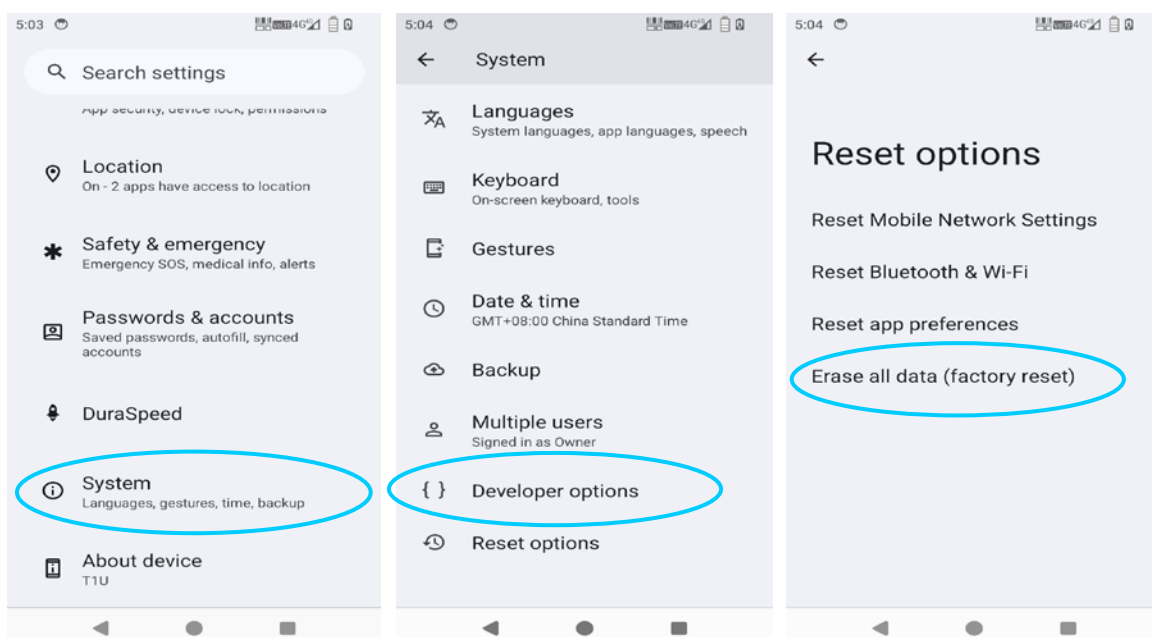
2.5.4 Safety setting

Find this icon:



- >Setting-System
- >Reset option
- >Clear all data
- >Reset to factory settings

Click *Clear all data*, the device will be reset to factory settings.



★ Reminder

This operation will erase the following data from the device:

- ♦ ☐ Account
- ♦ ☐ System and application data and settings
- ♦ ☐ Downloaded apps

The following data will not be cleared:

- ♦ ☐ Current system software and bundled apps

2.5.5 Language & Keyboard setting

Find this icon:



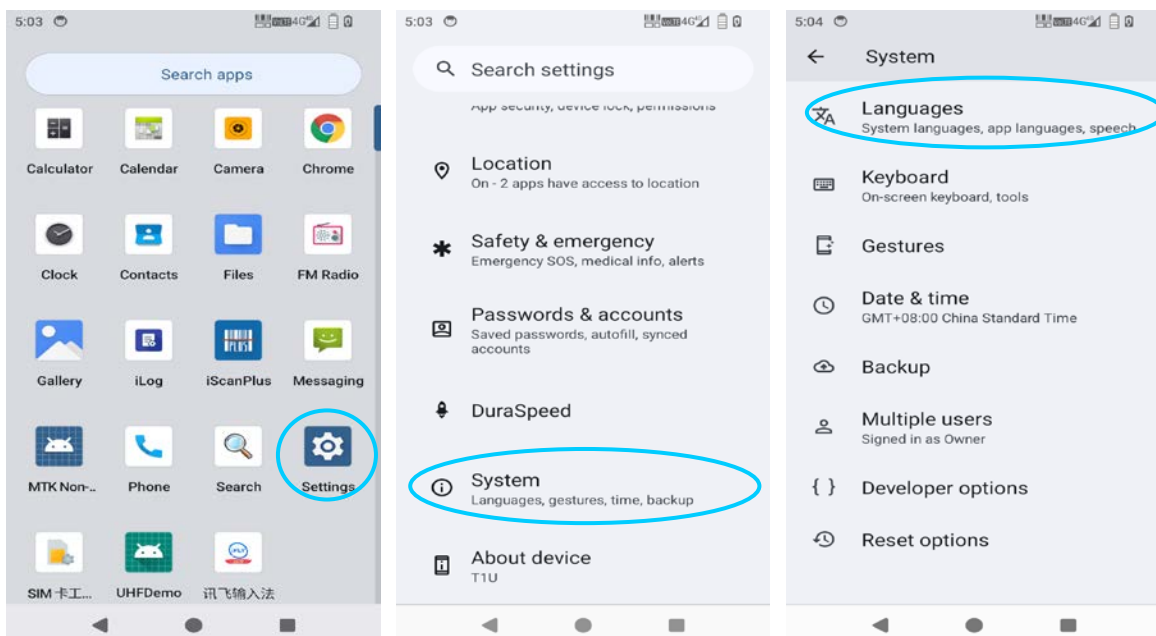
->Setting

->System

->Language & Keyboard

->Click *Language* and select the desired language from the list

->Click *Default* and select the desired keyboard from the list



2.5.6 Shortcut

A shortcut icon can be added to home screen.

Click *Application Tray* on home screen, press and drag the desired icons to home screen.

3 Network and Connection Synchronization

3.1 Data connection(optional)

Network configuration

The network has been configured by factory setting. If it is deleted accidentally, you can manually select the network through software configuration.

Find this icon:

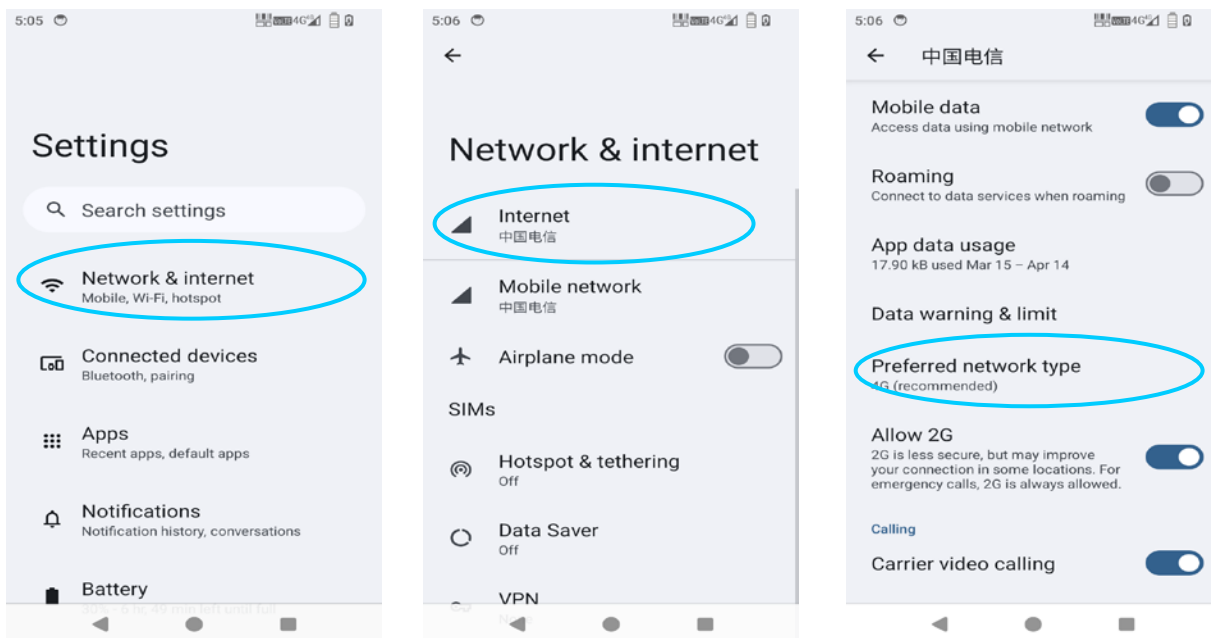


->Setting

->Network & Internet

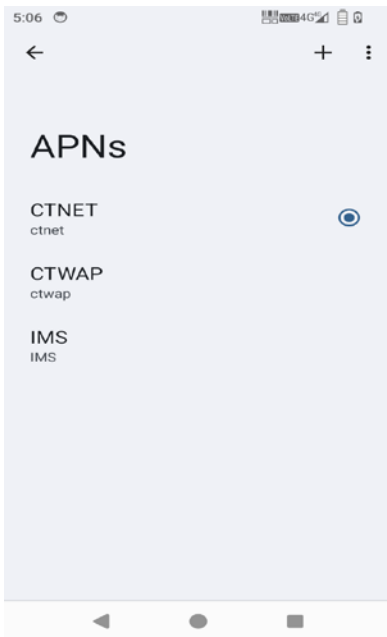
->Mobile network settings

->Preferred network type



Set up a GPRS data connection to access the Internet

To set up a GPRS data connection, please make sure that the SIM card is preset in iData T1 UHF and the data connection function has been activated. Generally, the network has been configured by factory setting. If it is deleted accidentally, you can set the network per following instructions. We take *China Mobile* as an example.



Name: CMNET

APN: cmnet

APN type: default, supl,net

Agent: Empty

Interface: Empty

User name: Empty

Password: Empty

Server: Empty

MMSC: Empty

MMS proxy: Empty

MMS interface: Empty

MCC: 460

MNC: 02

ID verification type: Empty

APN protocol: IPv4

APN Enable/Disable: APN enable

Bearer system: Empty

3.2 Wi-Fi Network connection

Find this icon:

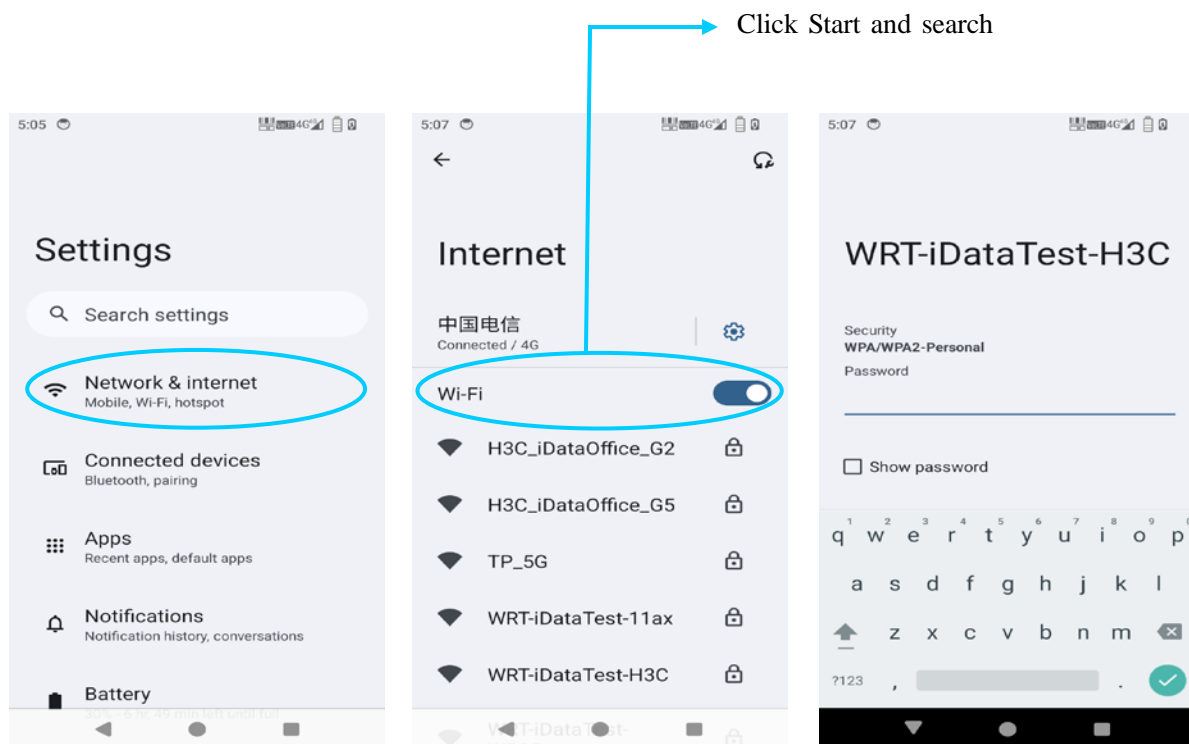


->Setting

->Network & Internet

->WLAN

1. Click *WLAN off/on* button to turn it on and search for the network. If the WLAN is turned on, click *Scan*, and the device will list the networks within the search range;
2. Click the network to be connected, and enter the password in the pop-up password dialog box;
3. Click *connect* to complete the WiFi connection.



3.3 Bluetooth

Turn on the Bluetooth function in your device to establish a wireless connection and exchange information with other Bluetooth compatible devices (such as computers, mobile phones). The Bluetooth connection performs better when there are no solid obstacles in the range.

Find this icon:

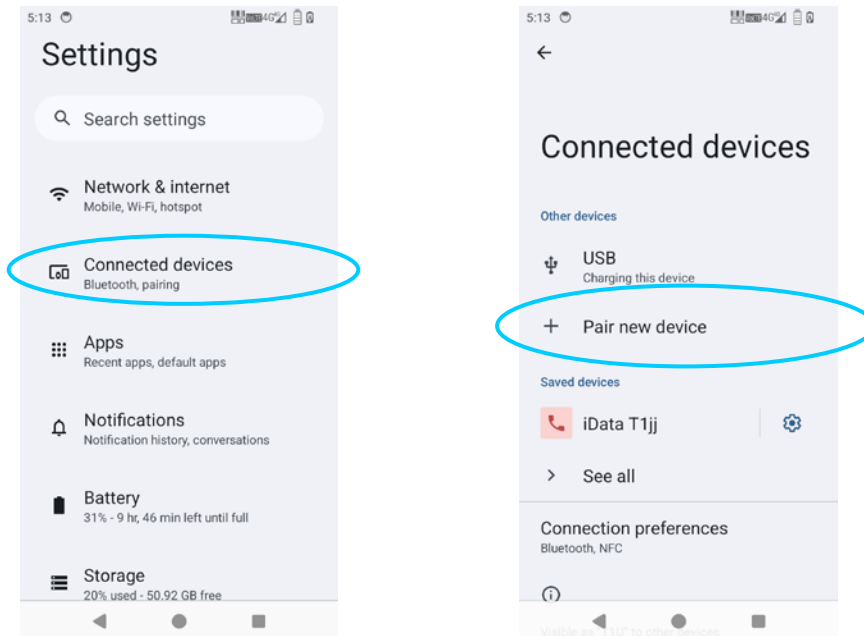


->Setting

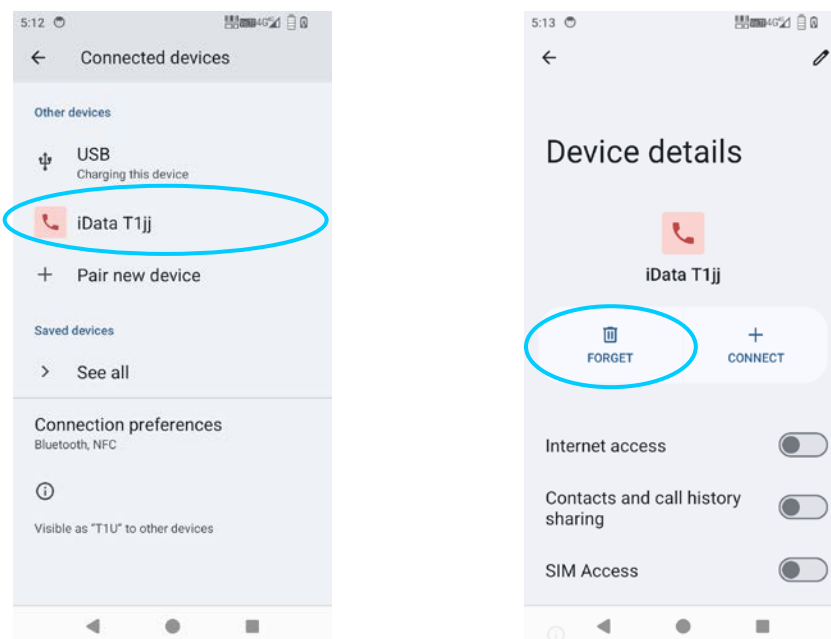
->Connected device

->Bluetooth

1. Click the *Bluetooth off/on* to turn on and search for other Bluetooth devices;
2. Click the desired device to pair in the searched list;
3. Enter the pairing code in the pop-up dialog box, click OK to connect the device;



4. Click the *setting* on the right side of *connected device*, and you will see the options of *Escape* and *file transfer*, you can choose your desired operations.



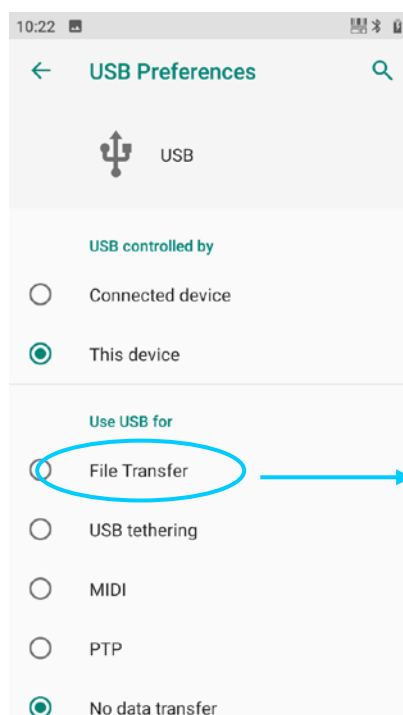
★ Reminder

- ♦ Make sure that the device to be connected with iData T1 UHF has enabled the Bluetooth function and turned on the Bluetooth visibility.
- ♦ During the connection process, please set the pairing code, this device does not support connection without passwords.

3.4 Computer connection by USB

Using a USB cable to connect the device to the computer can facilitate the transfer and processing of files such as pictures, videos, music between the device memory card and the computer.

1. Use a USB data cable to connect the device to the USB port of the computer;
2. The USB connection icon will be displayed in the device status bar, slide down the status bar, you can see the USB connection status, and you can choose the USB connection mode.



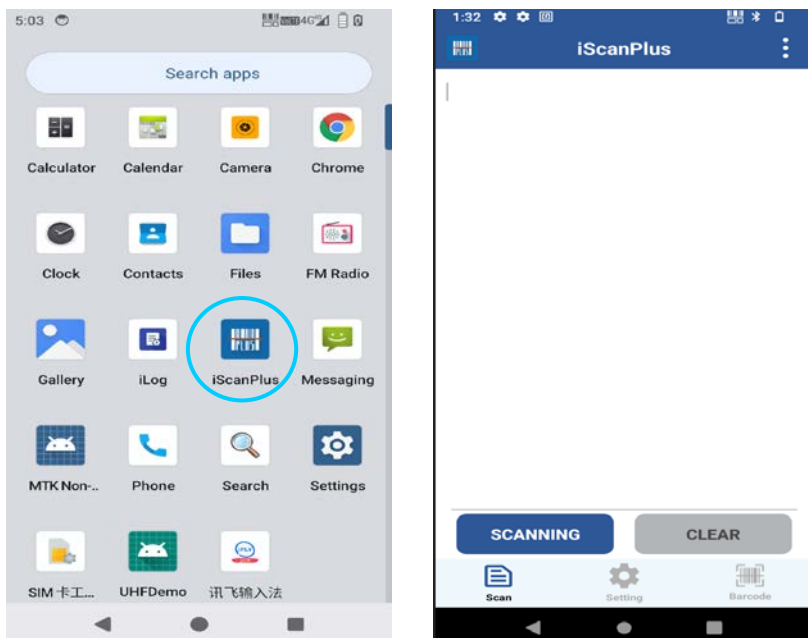
Click this option to open the USB storage device and copy files between your computer and device

4 iData T1 UHF Scan demonstration

4.1 Install and use iScan Plus

Before collecting data, you need to activate the scanning application on your device. Currently, iData T1 UHF manufacturer provides a demo scanner *iScan Plus* for free to obtain and decode barcode information.

Click to start the "*iScan Plus*" application on the desktop of iData T1 UHF, enter the scan test interface after startup, press the scan button or click the scan code function below to start scanning.



5 How to manage iData T1 UHF

5.1 Program software installation

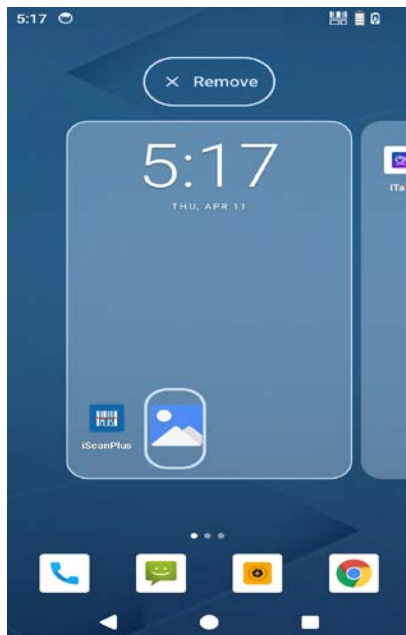
iData T1 UHF adopts the Google Android operating platform, and the Android software suffix is apk. There are a few methods for iData T1 UHF to install the program software:

1. You can download the software installation package, and then use the *file manager* to install it.
2. You can log in to the iData MDM system and upload the software installation package in the system for push installation.

5.2 Uninstall the installer

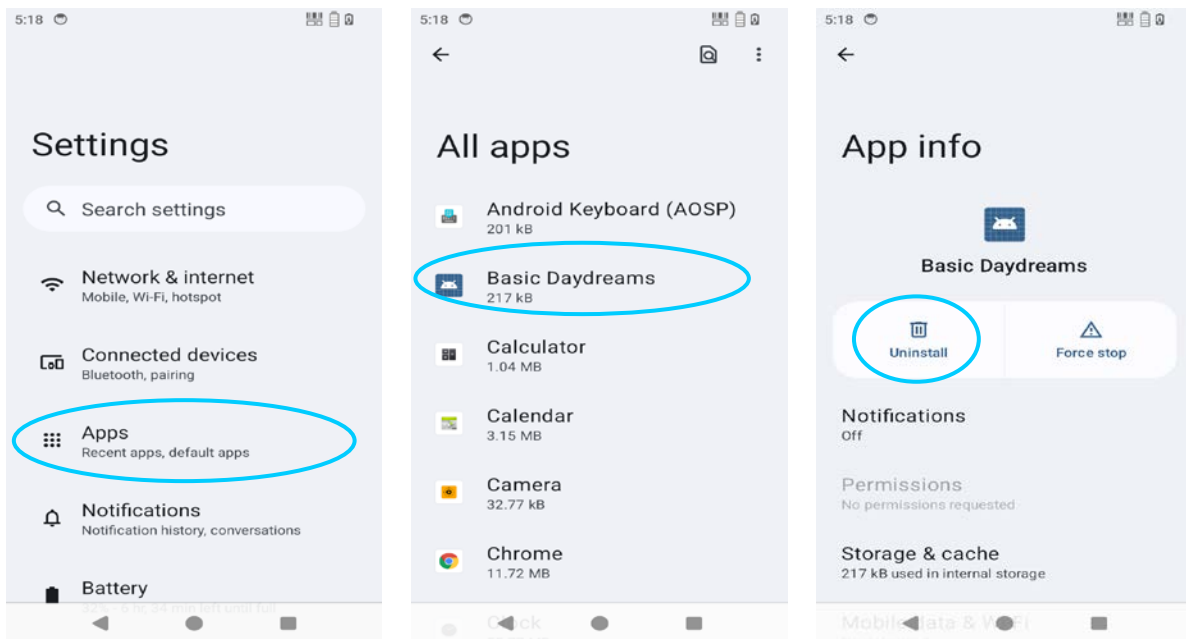
You can uninstall the unnecessary program software to increase the operating speed of the device. Here are a few methods for your reference.

1. Go to Settings->Applications and Notifications, select the program software to be uninstalled in the pop-up application list, click the software, enter the application program information interface, then in the application program information interface, click *Uninstall*, and enter the next step to uninstall , click *Confirm*, and wait a few seconds until it's completed.
2. You can click the *application tray* to open the application interface, find the icon of the application that needs to be uninstalled, long press the icon and drag it to the *Trash* to uninstall the program.



Users can enter the "*Settings - Application and Notification*" menu to enter the application management interface, and view the status of the program, for example: *Downloaded, In the memory card, Running*, etc.

They can also click the program to open the application information Interface, then they are able to perform operations such as force stop, uninstall, and deactivation of the program.



6 Precautions and Troubleshooting

6.1 iData T1 UHF precautions

In order to ensure that the device does not fail, please follow the tips below when using iData T1 UHF:

- ✧ Keep the device, its parts and accessories out of the reach of children.
- ✧ Keep the device dry. Rain, moisture, and liquids contain acids that can corrode electronic circuit boards.
- ✧ Do not store or use the device in dusty or unclean places.
- ✧ Do not store the device in an overheated place, high temperature will shorten the life of electronic components.
- ✧ Do not store the device in a place that is too cold, when the temperature of the device rises, moisture will generate from inside which may damage the circuit board.
- ✧ Do not attempt to disassemble the device, non-professional disassembly will damage the device.
- ✧ Do not touch the screen surface of iData T1 UHF with pens, pencils or other sharp objects to avoid scratching the screen.
- ✧ Do not throw, knock or strongly hit the device. Rough handling of the device will damage the components of the device and may cause device failure.
- ✧ Do not use harsh chemicals or strong detergents to clean the device. If the device becomes dirty, use a soft cloth dampened with a diluted glass cleaner solution to clean the surface.
- ✧ Please use a protective film to minimize wear and tear. Screen protectors increase the usability and durability of touch control screen.

Battery Safety Guidelines

- ✧ The device charging area must be kept away from debris, flammable materials or chemicals.
- ✧ When charging the battery, the temperature of the battery and the charger must be between (0°C~40°C).
- ✧ Do not use incompatible chargers. Using incompatible chargers may cause fire, explosion, leakage or other dangerous accidents.
- ✧ Do not disassemble, crush, twist, puncture or cut the battery.
- ✧ Do not short-circuit the device, or touch the battery terminals with metal or other conductive objects.
- ✧ Do not insert foreign objects into the device, expose the battery to water or other liquids, or expose the device to open flames, explosion sources, or other hazards.
- ✧ Do not place or store the device in an environment with excessive temperature.
- ✧ Do not place the device in a microwave or dryer.
- ✧ Do not throw the device into fire.
- ✧ If the battery leaks, do not let the liquid get on the skin or eyes. If it gets in by accident,

please wash the contacted part with plenty of running water and seek medical advice immediately.

How to clean iData T1 UHF

✧ Housing

Use an alcohol cloth to wipe the housing, including each key and the area between the keys.

✧ Screen

The screen can be wiped with an alcohol wipe, but make sure no excess liquid around it. Dry the screen immediately with a soft, fiber-free cloth to prevent streaks on the device.

✧ Scan window

Wipe the scan window regularly with lens tissue or suitable optical cleaning materials.

6.2 Troubleshooting

Table 7-1 iData T1 UHF troubleshooting

Problem	Possible cause	Solution
After pressing the power button, iData T1 UHF does not turn on	Battery is low or not charging	Charge iData T1 UHF
	System breakdown	Reset to factory setting
Chargeable battery doesn't charge	Battery failure	Replace the battery
	Battery temperature too high/low	Put the device in room temperature environment
During data communication, no data was transmitted or the transmitted data was incomplete	Wrong cable configuration	Reach out to the system admin
	Incorrect configuration or installation of communication software	Perform the installation or reinstall the synchronization software to update the driver
The function can not be activated by clicking	System is not responding	Restart the system
No sound	Volume is too low or closed	Adjust the volume
iData T1 UHF shut down	iData T1 UHF is inactive	iData T1 UHF will lock screen when it's not in use
	Run out of battery	Connect charging cradle to charge
iData T1 UHF operation becomes slow	Too many files stored in iData T1 UHF	Delete unused memos and records. If necessary, keep these recordings on the main unit (or use a memory card to increase storage capacity)
	Too many applications installed in iData T1 UHF	Delete user-installed applications in iData T1 UHF to restore memory.
iData T1 UHF doesn't decoding	No scanning application loaded	Load the scanning application in iData T1 UHF

Problem	Possible cause	Solution
	The barcode is not readable	Make sure the barcode is complete
	Low battery life	If there's no beam when pressing the trigger, check the battery level

Table 7-2 Bluetooth troubleshooting

Problem	Possible cause	Solution
iData T1 UHF can not find any Bluetooth device nearby	Too far away from other Bluetooth devices	Move the device closer to other Bluetooth devices, within 10 meters
	Nearby Bluetooth devices not turned on	Turn on the Bluetooth mode of the devices
	The Bluetooth device is not in visible mode	Set the Bluetooth device into visible mode
Bluetooth devices are visible but not connectable	This machine does not support connections without passwords	Set passwords for Bluetooth devices

Table 7-3 Cable troubleshooting

Problem	Possible cause	Solution
Not able to charge	Bad cable contact	Change the cable

Table 7-4 WI-FI connection troubleshooting

Problem	Possible cause	Solution
Can not connect to AP	"ID verification failed" is displayed	WLAN Password is not correct

© 2022 **Wuxi iData Technology Co., Ltd.** All rights reserved.

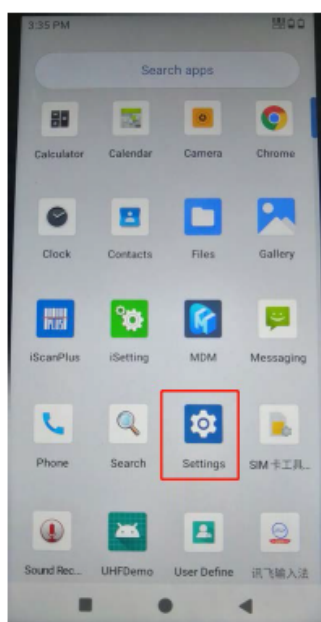
This guide is the user manual of iData T1U products provided by **Wuxi iData Technology Co., Ltd.**, based on the existing information. We do not guarantee that the content of this guide is completely in line with the latest status, so we reserve the rights to modify it at any time without notice.

Without the written permission of **Wuxi iData Technology Co., Ltd.**, no one is allowed to reproduce, extract, back up, modify, disseminate, translate into other languages, or transfer all or part of this guide for commercial use.

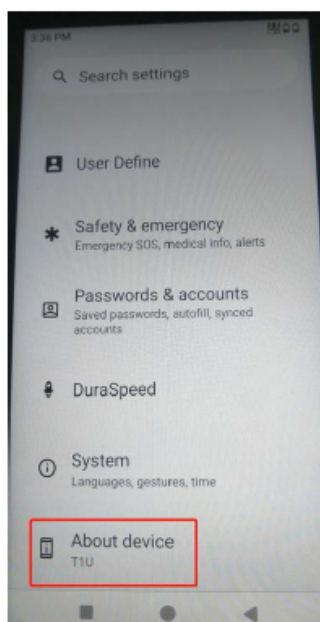
Should you have any questions about the equipment, you can email to marketing@idataglobal.com

Search the regulation information

1. settings



2. About device



3. FCC ID: 2ADE3IDATAT1UHF

新一代移动物联终端 New Mobile Computer

型号 Model: iData T1 UHF

CMIIT ID:



FCC ID: 2ADE3IDATAT1UHF

输入/输入: DC 5V=2A

无锡盈达聚力科技有限公司
Wuxi iData Technology Co., Ltd.

中国制造 Made in China

FCC Compliance Notice

This device complies with part 15 of the FCC Rules. Operation is subject to the following two conditions:

- (1) This device may not cause harmful interference, and
- (2) this device must accept any interference received, including interference that may cause undesired operation.

Any changes or modifications not expressly approved by the party responsible for compliance could void the user's authority to operate the equipment.

This equipment has been tested and found to comply with the limits for a Class B digital device, pursuant to part 15 of the FCC Rules. These limits are designed to provide reasonable protection against harmful interference in a residential installation. This equipment generates, uses and can radiate radio frequency energy and, if not installed and used in accordance with the instructions, may cause harmful interference to radio communications. However, there is no guarantee that interference will not occur in a particular installation. If this equipment does cause harmful interference to radio or television reception, which can be determined by turning the equipment off and on, the user is encouraged to try to correct the interference by one or more of the following measures:

- Reorient or relocate the receiving antenna.
- Increase the separation between the equipment and receiver.
- Connect the equipment into an outlet on a circuit different from that to which the receiver is connected. -
- Consult the dealer or an experienced radio/TV technician for help.

The device has been tested and complies with FCC SAR limits.

For body worn operation, this device has been tested and meets the FCC RF exposure guidelines when used with an accessory designated for this product or when used with an accessory that contains no metal and that positions the device a minimum of 10mm from the body

Wuxi iData Technology Co., Ltd.

Address: Floor 11, Building B1, No.999 Gaolang East Road, Wuxi City, P.R.C.

E-mail: sales@idataglobal.com

Website: www.idataglobal.com