

1 Annex B – EUT pictures

1.1 List of Pictures

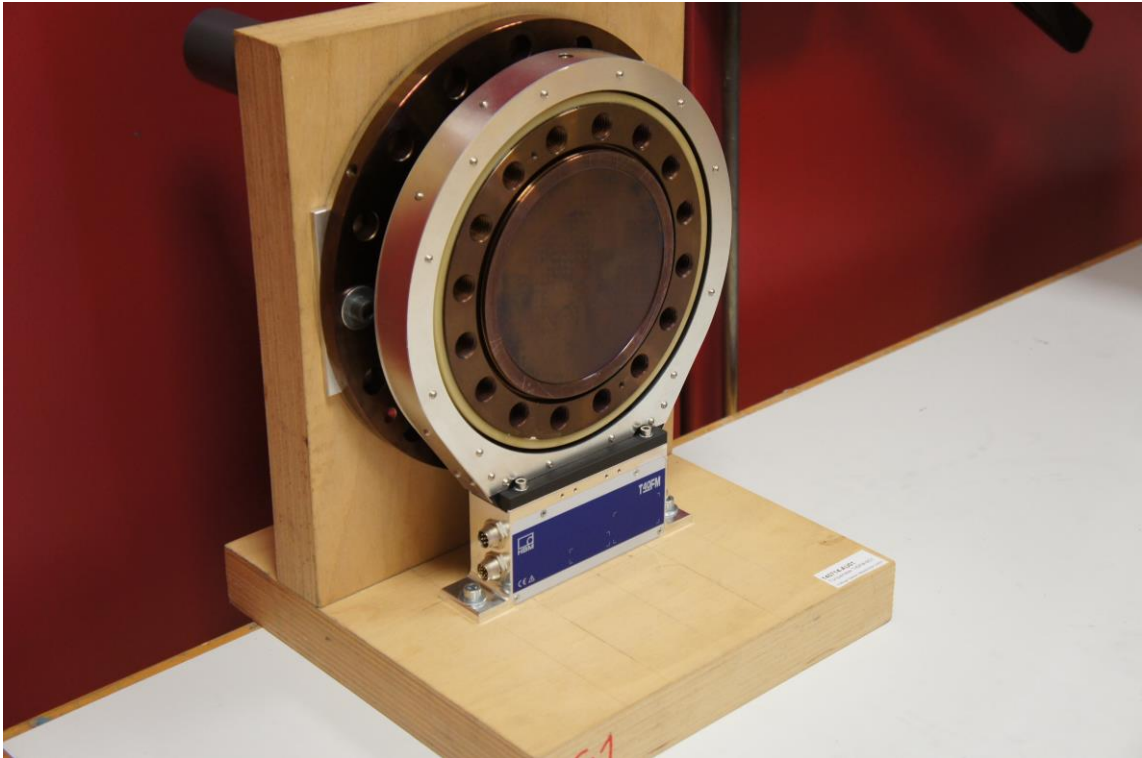
Picture 1: EUT left side, T40S7	2
Picture 2: EUT right side, T40S7	2
Picture 3: PCB rotor front side, T40S7	3
Picture 4: PCB rotor rear side, T40S7	3
Picture 5: PCB stator front side, T40S7	4
Picture 6: PCB stator rear side, T40S7	4
Picture 7: EUT left side, T40S8	5
Picture 8: EUT right side, T40S8	5
Picture 9: PCB rotor front side, T40S8	6
Picture 10: PCB rotor rear side, T40S8	6
Picture 11: PCB stator front side, T40S8	7
Picture 12: PCB stator rear side, T40S8	7
Picture 13: EUT left side, T40S9	8
Picture 14: EUT right side, T40S9	8
Picture 15: PCB rotor front side, T40S9	9
Picture 16: PCB rotor rear side, T40S9	9
Picture 17: PCB stator front side, T40S9	10
Picture 18: PCB stator rear side, T40S9	10
Picture 19: Labels, T40S7 - T40S9	11
Picture 20: Data cable termination box - front	12
Picture 21: Data cable termination box - right side	12
Picture 22: Data cable termination box - left side	13
Picture 23: DC power supply	13



1.2 EUT pictures - T40S7



Picture 1: EUT left side, T40S7



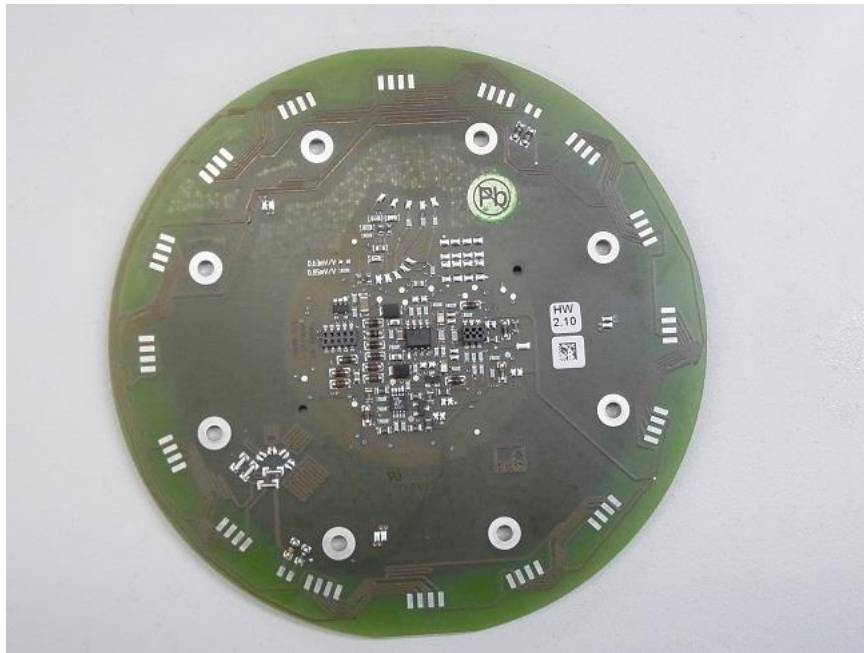
Picture 2: EUT right side, T40S7



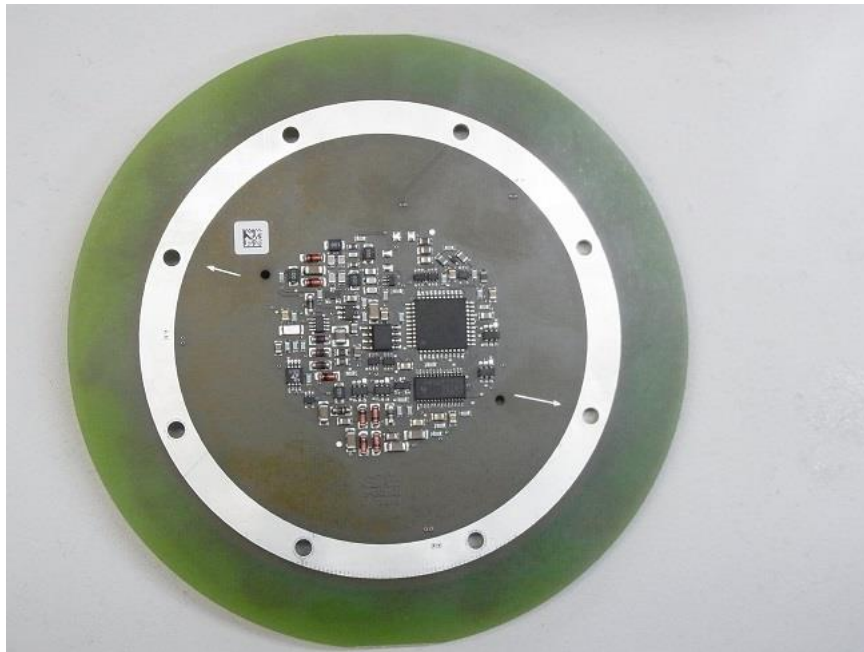
EMV **TESTHAUS** GmbH
Gustav-Hertz-Straße 35
94315 Straubing
Germany
Revision: 1.7

Hottinger Baldwin Messtechnik GmbH
Torque meter
T40S7, T40S8, T40S9

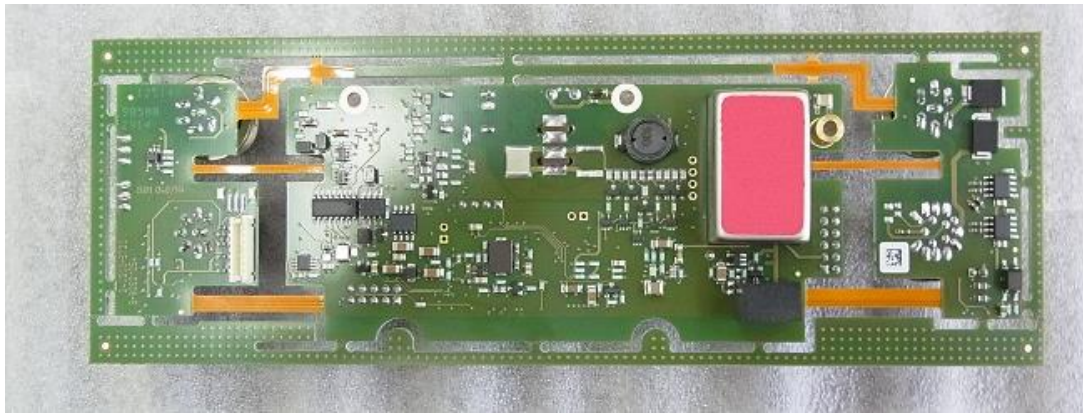
140714-AU01+W01
Annex B



Picture 3: PCB rotor front side, T40S7



Picture 4: PCB rotor rear side, T40S7



Picture 5: PCB stator front side, T40S7

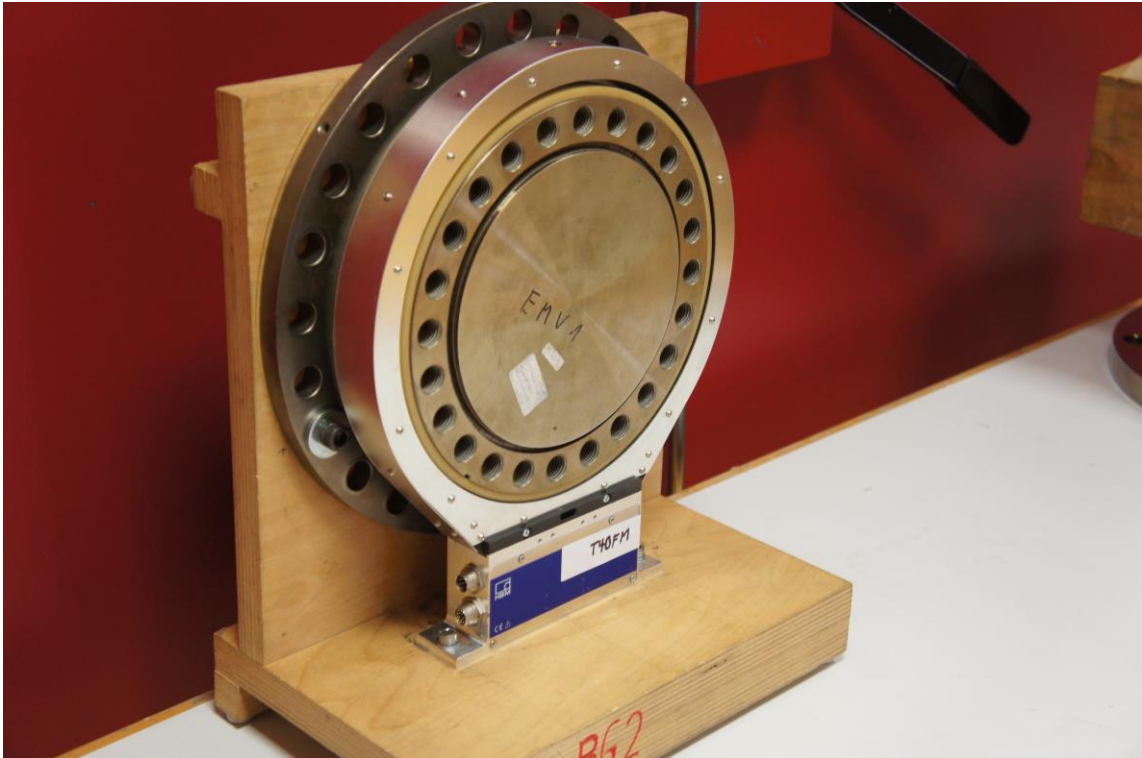


Picture 6: PCB stator rear side, T40S7

1.3 EUT pictures - T40S8



Picture 7: EUT left side, T40S8



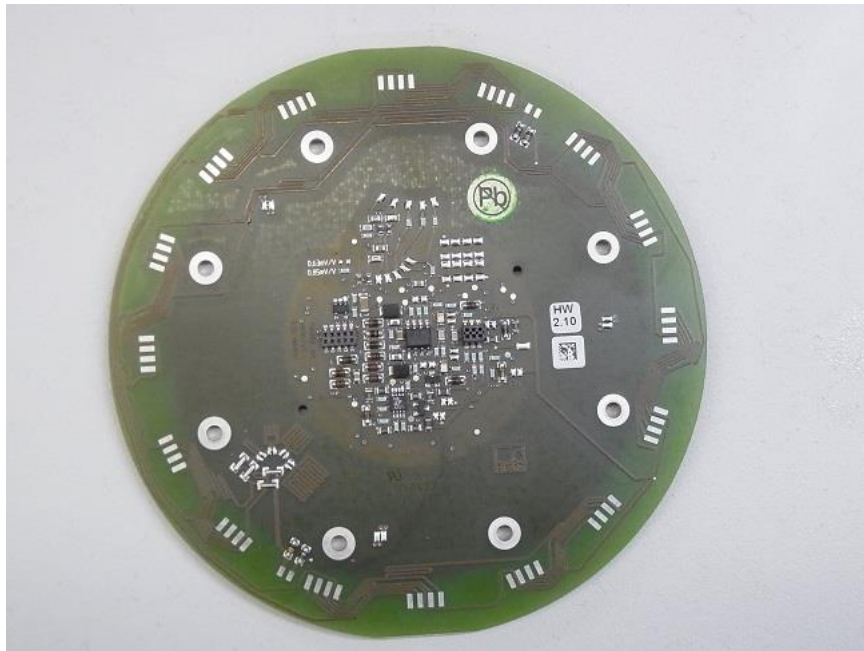
Picture 8: EUT right side, T40S8



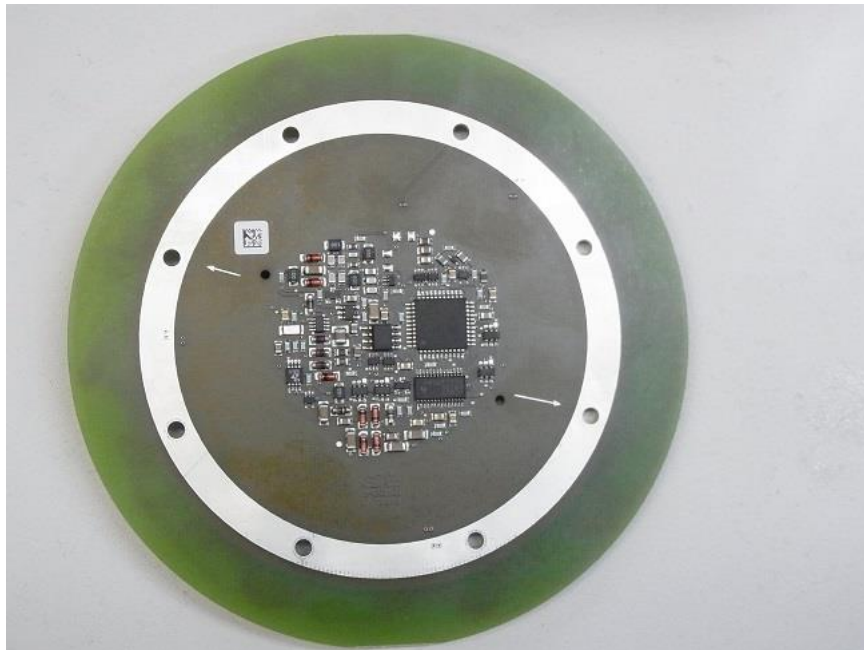
EMV **TESTHAUS** GmbH
Gustav-Hertz-Straße 35
94315 Straubing
Germany
Revision: 1.7

Hottinger Baldwin Messtechnik GmbH
Torque meter
T40S7, T40S8, T40S9

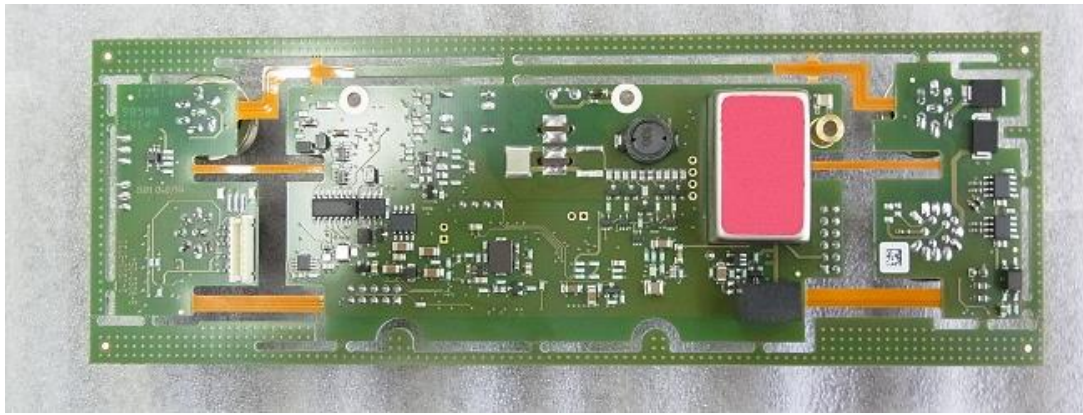
140714-AU01+W01
Annex B



Picture 9: PCB rotor front side, T40S8



Picture 10: PCB rotor rear side, T40S8

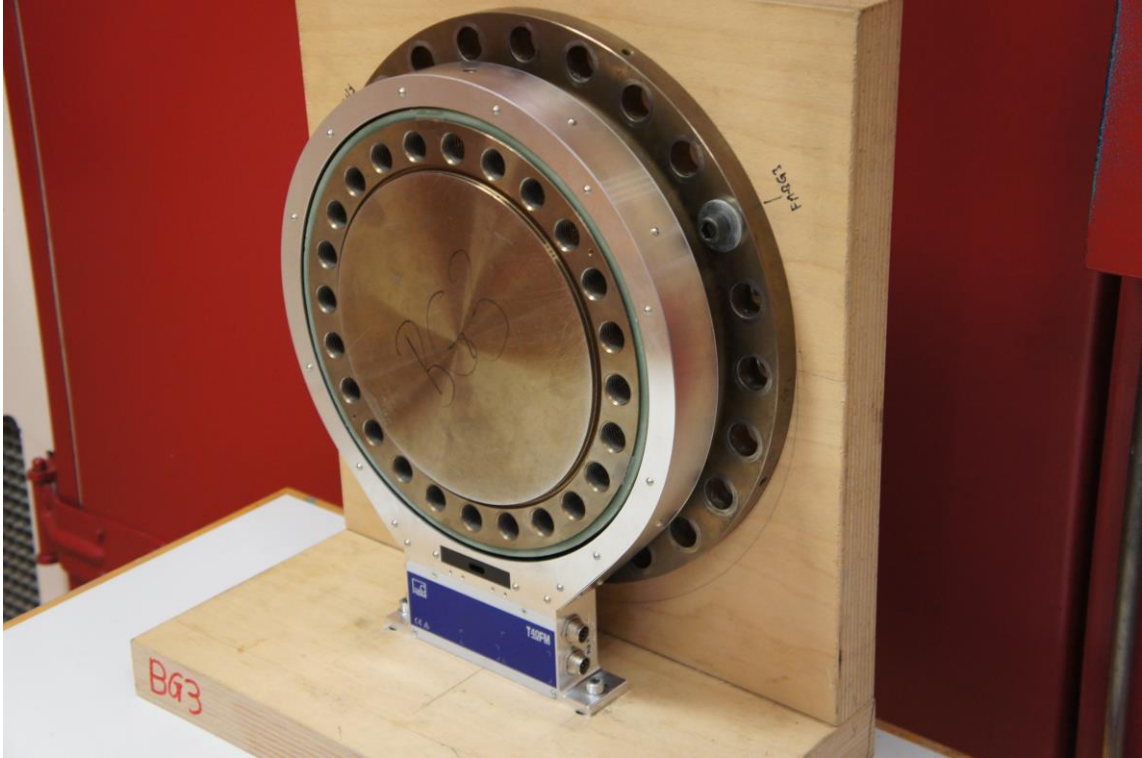


Picture 11: PCB stator front side, T40S8

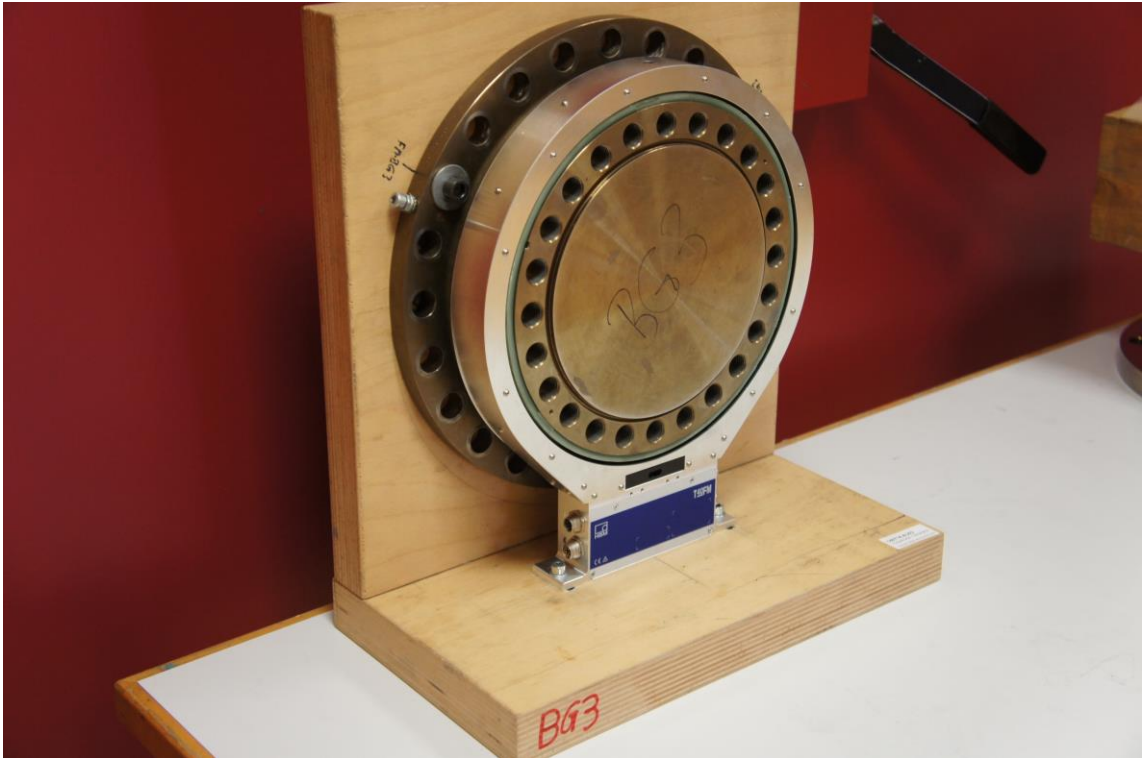


Picture 12: PCB stator rear side, T40S8

1.4 EUT pictures - T40S9



Picture 13: EUT left side, T40S9



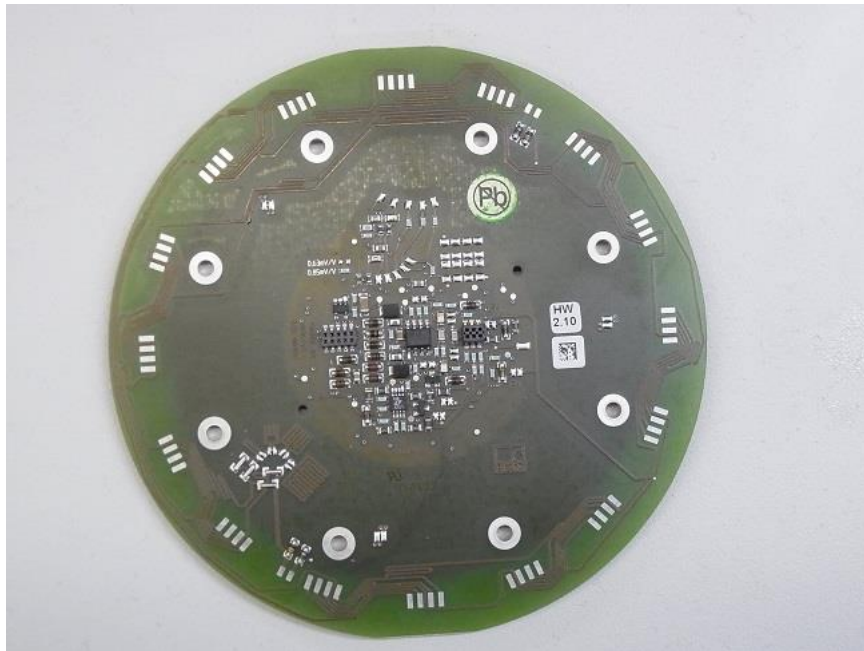
Picture 14: EUT right side, T40S9



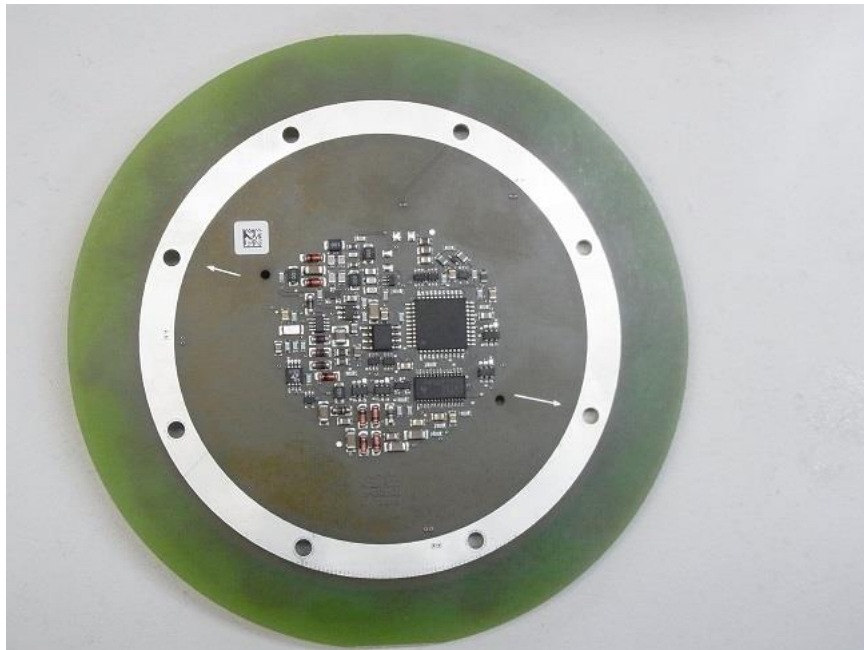
EMV **TESTHAUS** GmbH
Gustav-Hertz-Straße 35
94315 Straubing
Germany
Revision: 1.7

Hottinger Baldwin Messtechnik GmbH
Torque meter
T40S7, T40S8, T40S9

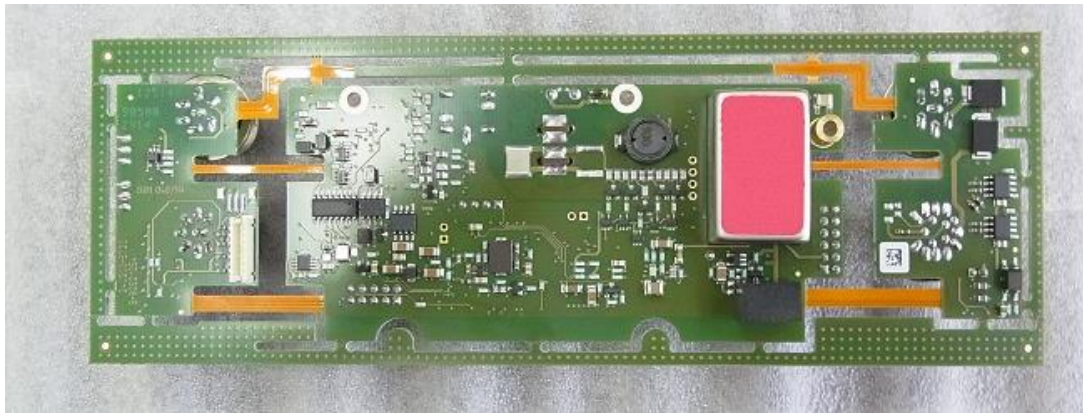
140714-AU01+W01
Annex B



Picture 15: PCB rotor front side, T40S9



Picture 16: PCB rotor rear side, T40S9



Picture 17: PCB stator front side, T40S9



Picture 18: PCB stator rear side, T40S9

1.5 EUT pictures - labels

<p>Model: T40S7 FCC ID: 2ADAT-T40S7TOS9 IC: 12438A-T40S7TOS9 This device complies with part 15 of the FCC Rules. Operation is subject to the following two conditions: (1) This device may not cause harmful interference, and (2) this device must accept any interference received, including interference that may cause undesired operation.</p>	<p>Model: T40S8 FCC ID: 2ADAT- T40S7TOS9 IC: 12438A- T40S7TOS9 This device complies with part 15 of the FCC Rules. Operation is subject to the following two conditions: (1) This device may not cause harmful interference, and (2) this device must accept any interference received, including interference that may cause undesired operation.</p>	<p>Model: T40S9 FCC ID: 2ADAT- T40S7TOS9 IC: 12438A- T40S7TOS9 This device complies with part 15 of the FCC Rules. Operation is subject to the following two conditions: (1) This device may not cause harmful interference, and (2) this device must accept any interference received, including interference that may cause undesired operation.</p>
--	--	--

Picture 19: Labels, T40S7 - T40S9



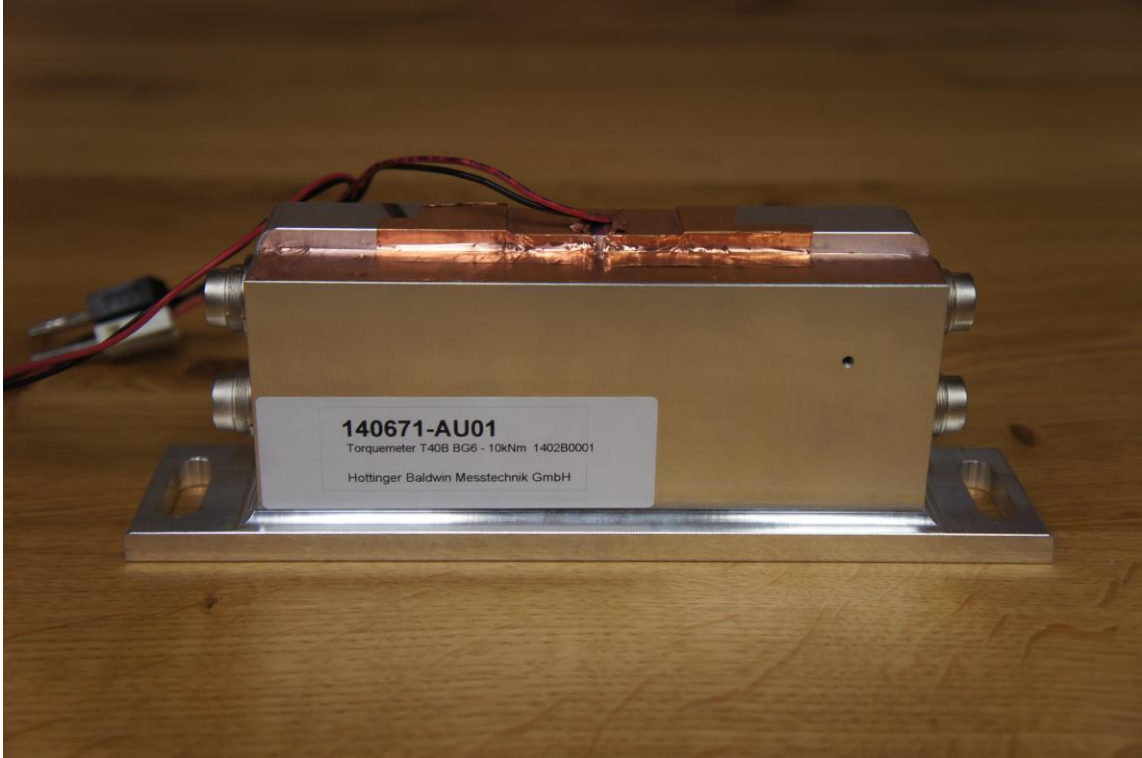
EMV **TESTHAUS** GmbH
 Gustav-Hertz-Straße 35
 94315 Straubing
 Germany
 Revision: 1.7

Hottinger Baldwin Messtechnik GmbH
 Torque meter
 T40S7, T40S8, T40S9

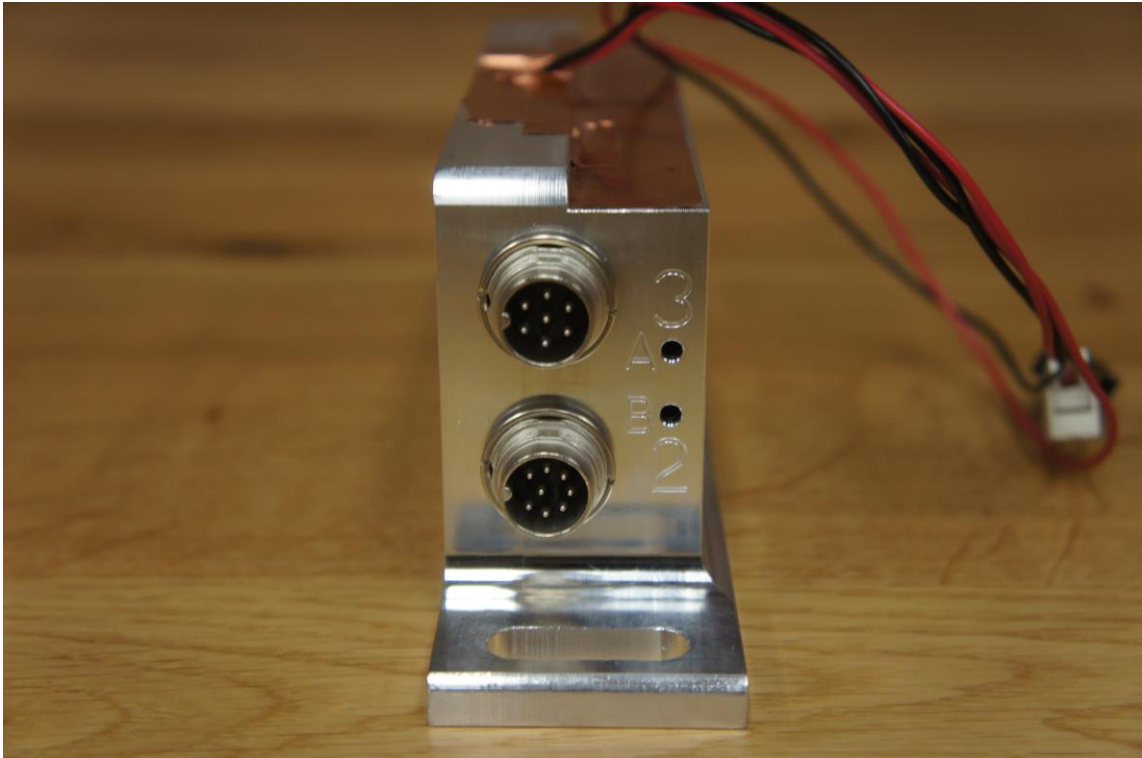
140714-AU01+W01
 Annex B

Page 11 of 13

1.6 EUT pictures - peripheral devices



Picture 20: Data cable termination box - front



Picture 21: Data cable termination box - right side

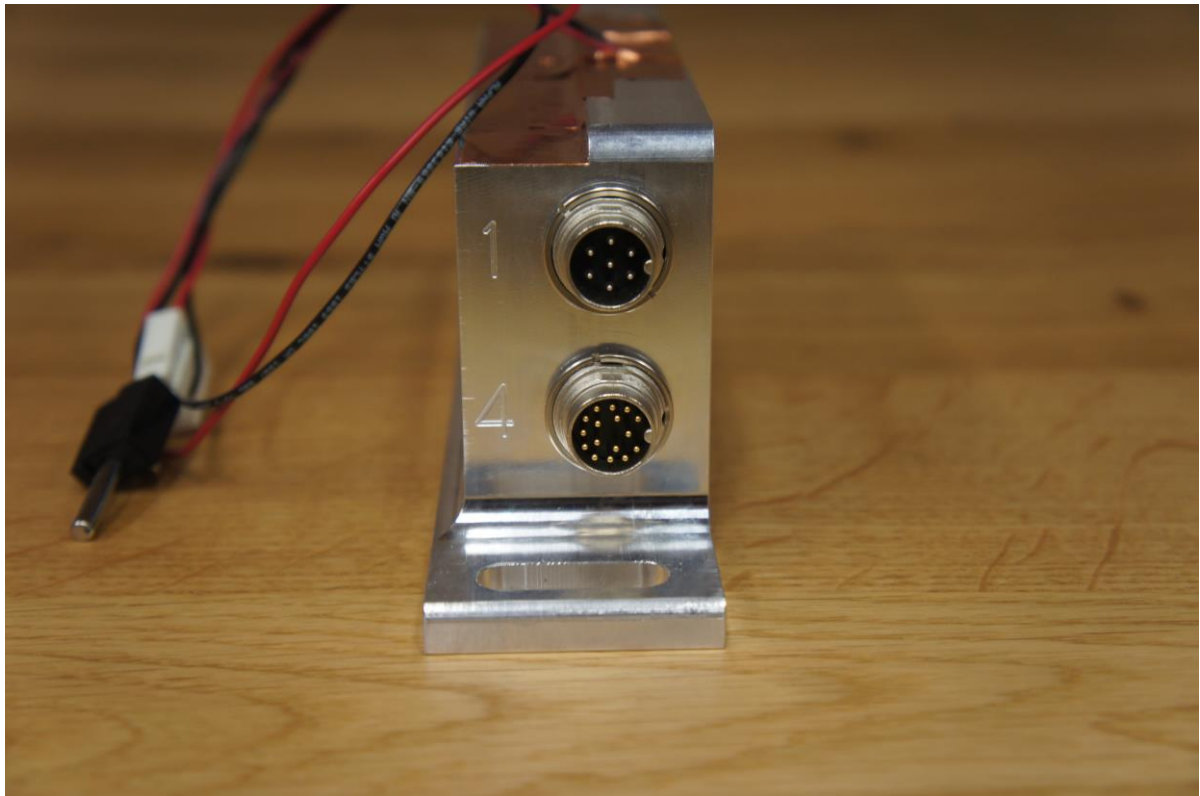


EMV **TESTHAUS** GmbH
Gustav-Hertz-Straße 35
94315 Straubing
Germany
Revision: 1.7

Hottinger Baldwin Messtechnik GmbH
Torque meter
T40S7, T40S8, T40S9

140714-AU01+W01
Annex B

Page 12 of 13



Picture 22: Data cable termination box - left side



Picture 23: DC power supply