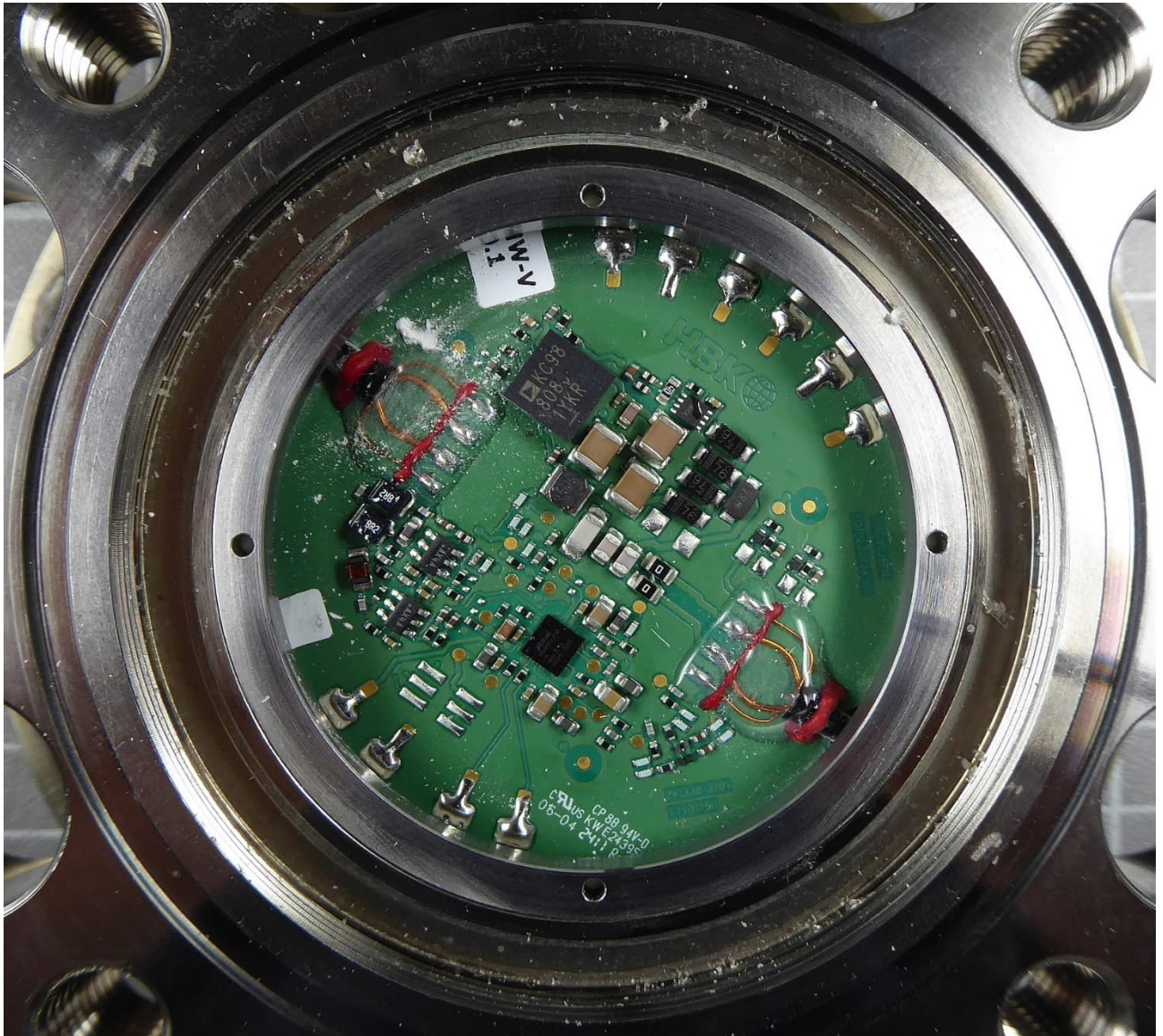
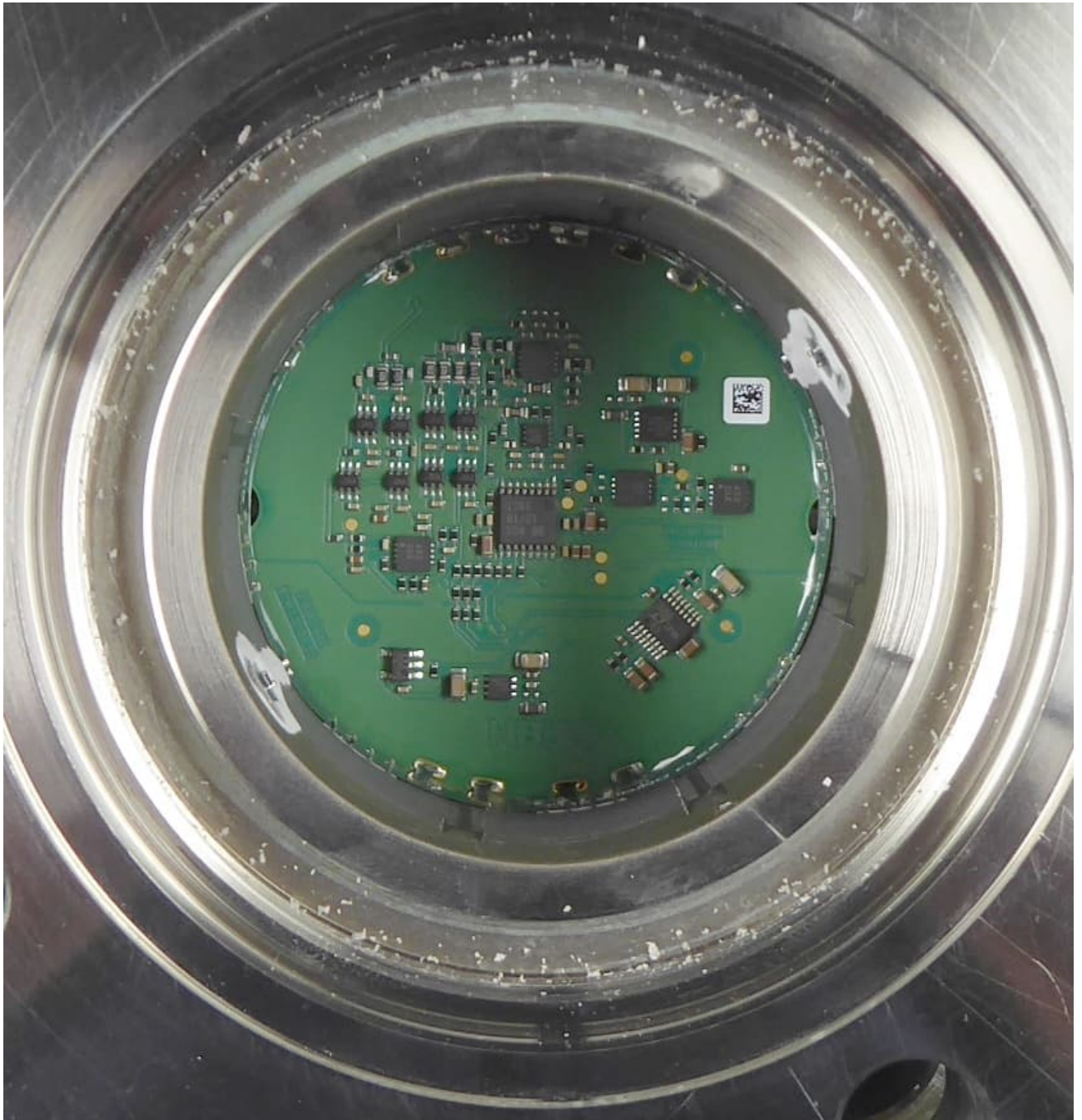


EUT Internal Photos



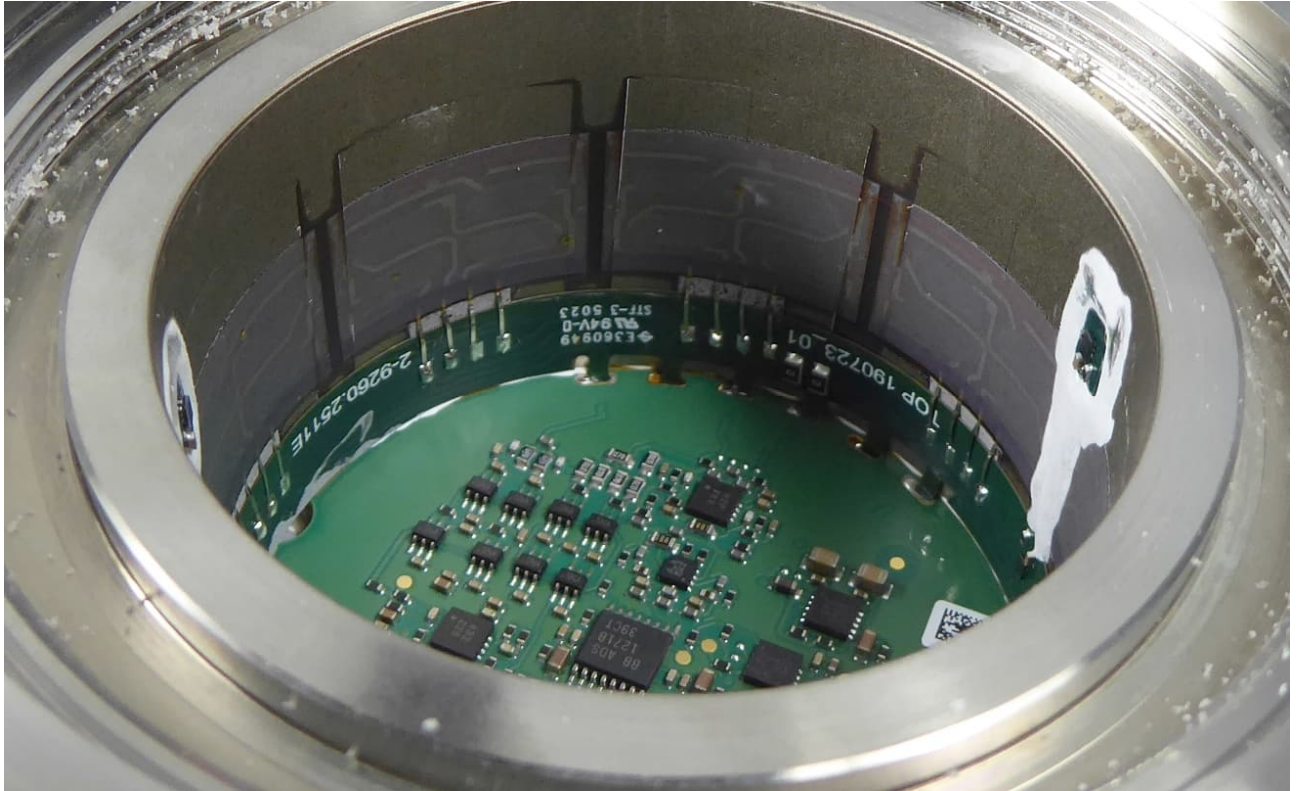
EUT T110, housing opened view 1

EUT Internal Photos

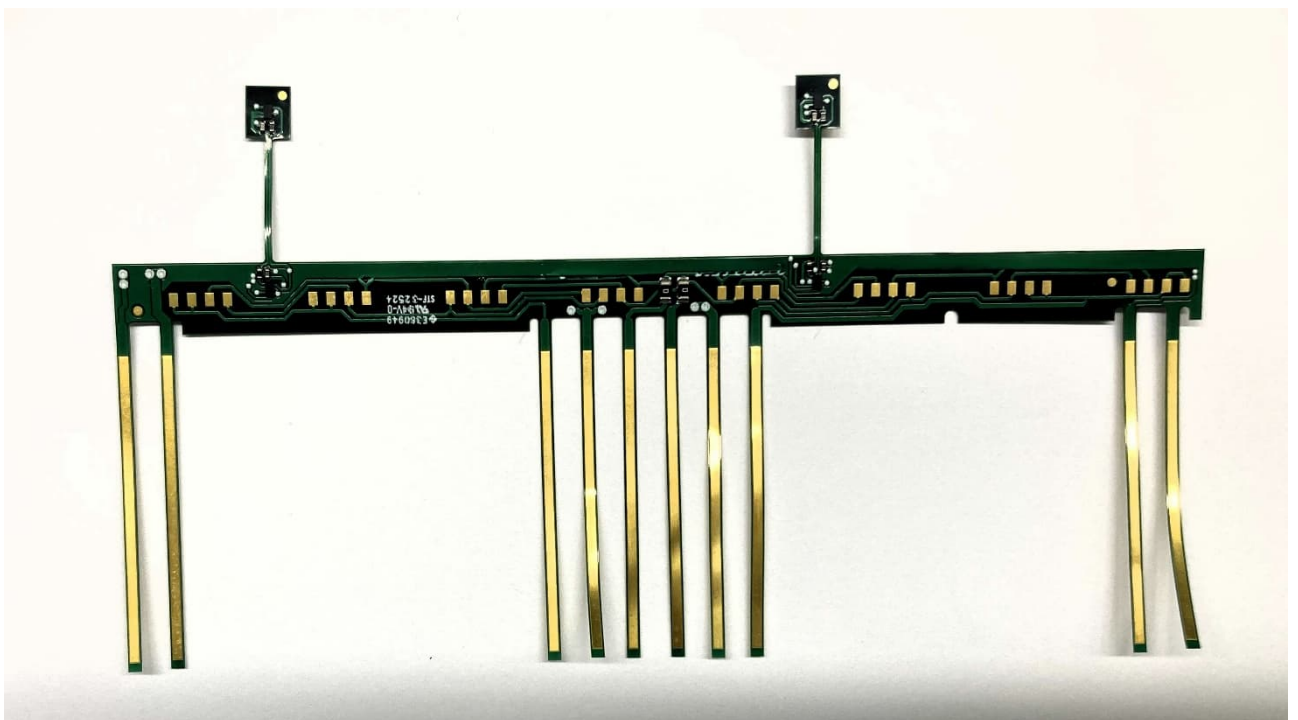


EUT T110, housing opened view 2

EUT Internal Photos

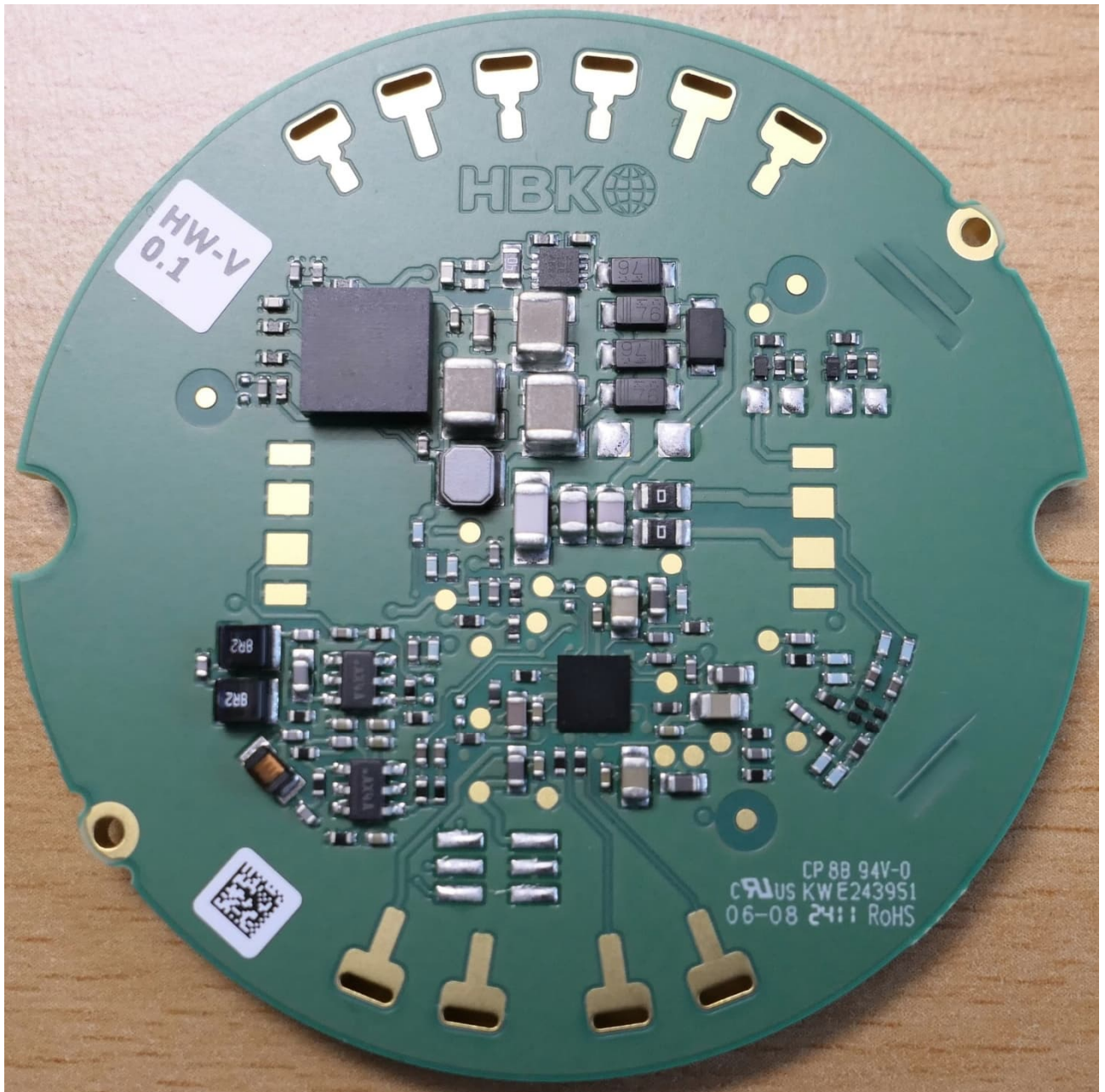


EUT T110, housing opened view 3



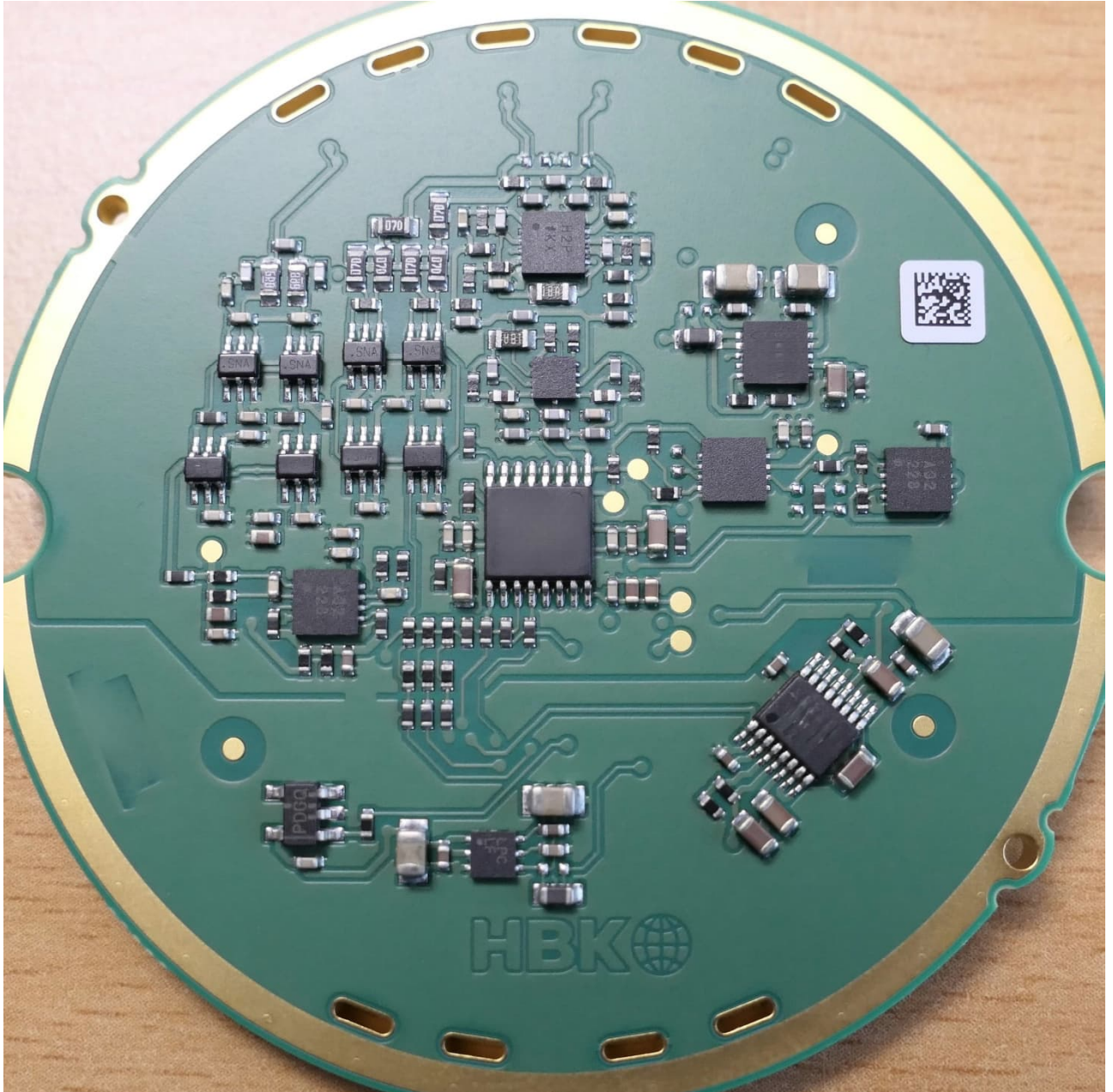
EUT T110 Sensor PCB, top view (Photo delivered by the applicant)

EUT Internal Photos



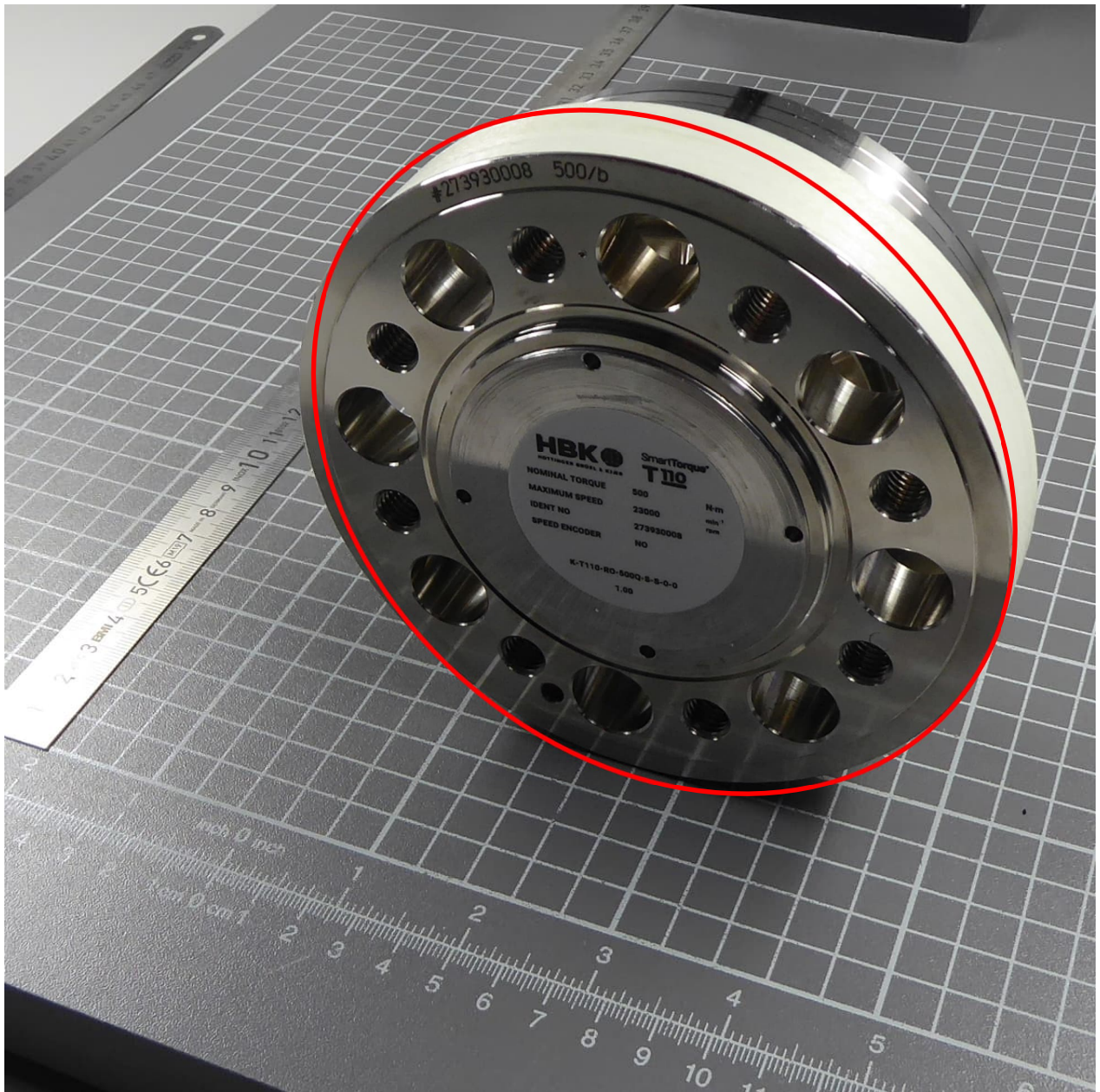
EUT T110 Processor PCB, bottom view (Photo delivered by the applicant)

EUT Internal Photos



EUT T110 Processor PCB, bottom view (Photo delivered by the applicant)

EUT Internal Photos



EUT T110, 3D view 1 (Photo shows different ident number to the tested sample)
Antenna coil is highlighted (red)

----- end of document -----