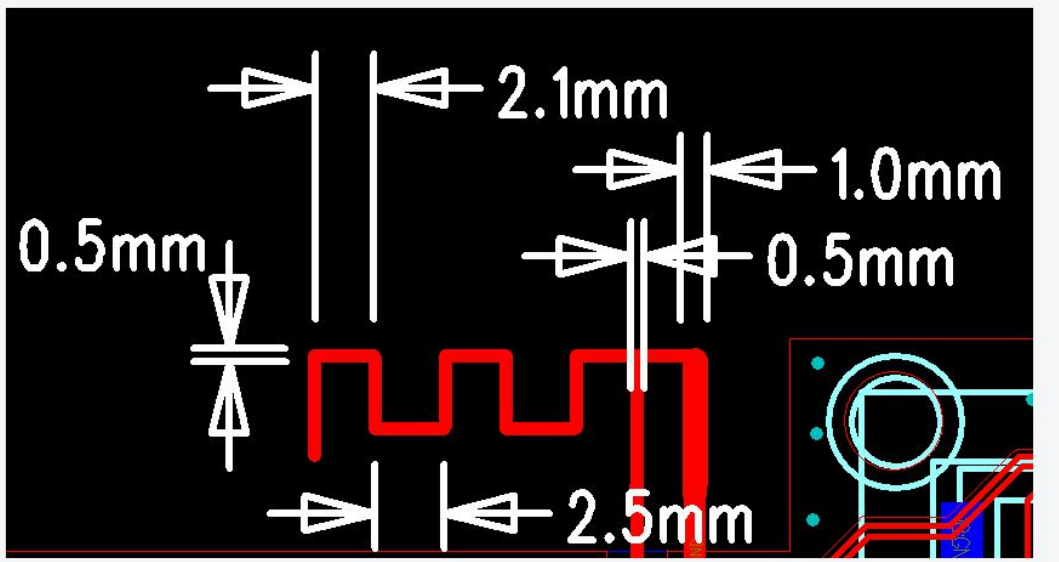


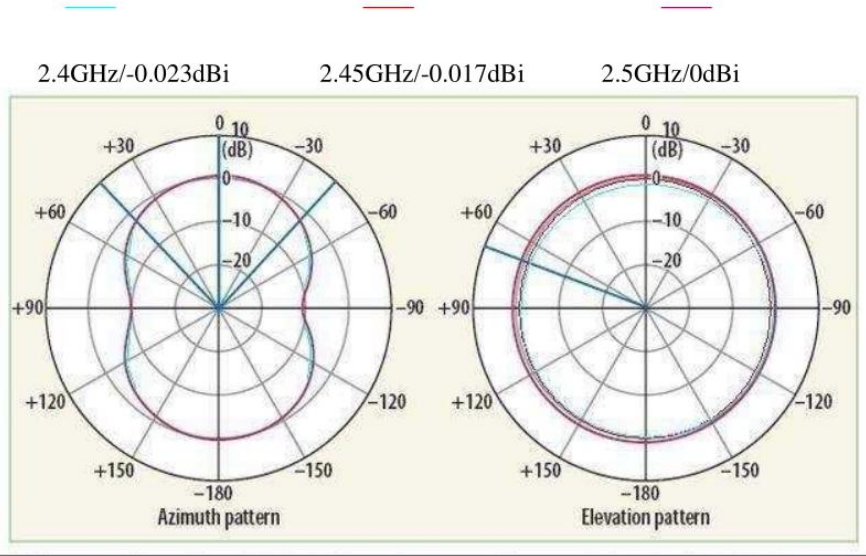
Specification: 2.4GHz,0dBi max. L=34.3mm



RF Antenna Assembly

SPEC:2.4~2.5GHz

H Plane



Caution:

This is a PCB printed antenna, since metal will attenuate the signal of antenna, grounded and wiring on the bottom of the antenna PCB are

Customer	SHENZHEN JIALIDE TECHNOLOGY CO.,LTD
Project	K13
Manufacturer's address	Lan Kechuang Science and Technology Park, No. 19, Baotong South Road, Xikeng Community, Yuanshan Street, Longgang District, Shenzhen