

SAR EVALUATION REPORT

For

G'FIVE MOBILE INTERNATIONAL (HK) LTD

P.O.Box 957, Offshore Incorporations Centre, Tortola, British Virgin Islands, British,
United Kingdom

FCC ID: 2ACTQPRESIDENTA97

Report Type: Original Report	Product Type: Mobile phone
Test Engineer: Terry XiaHou	<i>Terry XiaHou</i>
Report Number: RDG150316001-20	
Report Date: 2015-04-07	
Reviewed By: SAR Engineer	<i>Bell Hu</i>
Prepared By: Bay Area Compliance Laboratories Corp. (Shenzhen) 6/F, the 3rd Phase of WanLi Industrial Building, ShiHua Road, FuTian Free Trade Zone Shenzhen, Guangdong, China Tel: +86-755-33320018 Fax: +86-755-33320008 www.baclcorp.com.cn	

Note: This test report is prepared for the customer shown above and for the equipment described herein. It may not be duplicated or used in part without prior written consent from Bay Area Compliance Laboratories Corp.

Attestation of Test Results		
EUT Information	Company Name	G'FIVE MOBILE INTERNATIONAL (HK) LTD
	EUT Description	Mobile phone
	FCC ID	2ACTQPRESIDENTA97
	Model Number	President A97
	Test Date	2015-03-28
Frequency	Max. SAR Level(s) Reported	Limit(W/Kg)
GSM 850	0.521 W/kg 1g Head SAR 1.155 W/kg 1g Body SAR	1.6
PCS 1900	0.309 W/kg 1g Head SAR 0.369 W/kg 1g Body SAR	
WCDMA850	0.233 W/kg 1g Head SAR 0.328 W/kg 1g Body SAR	
Wi-Fi(802.11b)	0.126 W/kg 1g Head SAR 0.126 W/kg 1g Body SAR	
Simultaneous	0.639 W/kg 1g Head SAR 1.281 W/kg 1g Body SAR	
Applicable Standards	ANSI / IEEE C95.1 : 2005 IEEE Standard for Safety Levels with Respect to Human Exposure to Radio Frequency Electromagnetic Fileds,3 kHz to 300 GHz.	
	ANSI / IEEE C95.3 : 2002 IEEE Recommended Practice for Measurements and Computations of Radio Frequency Electromagnetic Fields With Respect to Human Exposure to SuchFields,100 kHz—300 GHz.	
	IEEE1528:2013 IEEE Recommended Practice for Determining the Peak Spatial-Average Specific Absorption Rate (SAR) in the Human Head from Wireless Communications Devices: Measurement Techniques	
	KDB procedures KDB 447498 D01 General RF Exposure Guidance v05r02. KDB 648474 D04 Handset SAR v01r02. KDB 865664 D01 SAR measurement 100 MHz to 6 GHz v01r03 KDB 865664 D02 RF Exposure Reporting v01r01 KDB 941225 D01 3G SAR Procedures v03 KDB 941225 D06 Hotspot Mode v02	
<p>Note: This wireless device has been shown to be capable of compliance for localized specific absorption rate (SAR) for General Population/Uncontrolled Exposure limits specified in ANSI/IEEE Standards and has been tested in accordance with the measurement procedures specified in IEEE 1528-2013 and RF exposure KDB procedures.</p> <p>The results and statements contained in this report pertain only to the device(s) evaluated.</p>		

TABLE OF CONTENTS

DOCUMENT REVISION HISTORY	5
EUT DESCRIPTION	6
TECHNICAL SPECIFICATION	6
REFERENCE, STANDARDS, AND GUIDELINES	7
SAR LIMITS	8
FACILITIES	9
DESCRIPTION OF TEST SYSTEM	10
EQUIPMENT LIST AND CALIBRATION	17
EQUIPMENTS LIST & CALIBRATION INFORMATION	17
SAR MEASUREMENT SYSTEM VERIFICATION	18
LIQUID VERIFICATION	18
SYSTEM ACCURACY VERIFICATION	23
SAR SYSTEM VALIDATION DATA	24
EUT TEST STRATEGY AND METHODOLOGY	36
TEST POSITIONS FOR DEVICE OPERATING NEXT TO A PERSON'S EAR	36
CHEEK/TOUCH POSITION	37
EAR/TILT POSITION	37
TEST POSITIONS FOR BODY-WORN AND OTHER CONFIGURATIONS	38
SAR EVALUATION PROCEDURE	39
TEST METHODOLOGY	39
CONDUCTED OUTPUT POWER MEASUREMENT	40
PROVISION APPLICABLE	40
TEST PROCEDURE	40
MAXIMUM OUTPUT POWER AMONG PRODUCTION UNITS	40
TEST RESULTS:	41
SAR MEASUREMENT RESULTS	47
SAR TEST DATA	47
SAR SIMULTANEOUS TRANSMISSION DESCRIPTION	52
SAR PLOTS (SUMMARY OF THE HIGHEST SAR VALUES)	56
APPENDIX A MEASUREMENT UNCERTAINTY	64
APPENDIX B – PROBE CALIBRATION CERTIFICATES	65
APPENDIX C DIPOLE CALIBRATION CERTIFICATES	75
APPENDIX D EUT TEST POSITION PHOTOS	102
LIQUID DEPTH $\geq 15\text{CM}$	102
BODY-WORN BACK SETUP PHOTO (10MM)	102
BODY-WORN LEFT SETUP PHOTO (10MM)	103
BODY-WORN RIGHT SETUP PHOTO (10MM)	103
BODY-WORN TOP SETUP PHOTO (10MM)	104
LEFT HEAD CHEEK SETUP PHOTO	104
LEFT HEAD TILT SETUP PHOTO	105
RIGHT HEAD CHEEK SETUP PHOTO	105
RIGHT HEAD TILT SETUP PHOTO	106
APPENDIX E EUT PHOTOS	107
EUT – FRONT VIEW	107
EUT – BACK VIEW	107
EUT – LEFT SIDE VIEW	108

EUT – RIGHT SIDE VIEW 108

EUT – TOP VIEW 109

EUT – BOTTOM VIEW..... 109

EUT – UNCOVER VIEW..... 110

APPENDIX F INFORMATIVE REFERENCES..... 111

DOCUMENT REVISION HISTORY

Revision Number	Report Number	Description of Revision	Date of Revision
0	RDG150316001-20	Original Report	2015-04-07

EUT DESCRIPTION

This report has been prepared on behalf of G'FIVE MOBILE INTERNATIONAL (HK) LTD and their product, FCC ID: 2ACTQPRESIDENTA97, Model: President A97 or the EUT (Equipment under Test) as referred to in the rest of this report.

Technical Specification

Product Type	Portable
Exposure Category:	Population / Uncontrolled
Antenna Type(s):	Internal Antenna
Body-Worn Accessories:	Headset
Face-Head Accessories:	None
Multi-slot Class:	Class12
Operation Mode :	GSM Voice, GPRS/EDGE Data, WCDMA, Wi-Fi and Bluetooth
Frequency Band:	GSM 850 : 824-849 MHz(TX) ; 869-894 MHz(RX) PCS 1900: 1850-1910 MHz(TX) ; 1930-1990 MHz(RX) WCDMA850: 824-849 MHz(TX) ; 869-894 MHz(RX) Wi-Fi (802.11B/G/N20): 2412MHz-2462MHz Wi-Fi (802.11N40): 2422MHz-2452MHz Bluetooth 3.0 : 2402MHz-2480MHz BTLE: 2402MHz-2480MHz
Conducted RF Power:	GSM 850 : 31.37 dBm PCS 1900: 30.68 dBm WCDMA 850: 21.82 dBm Wi-Fi (802.11B/G/N20): 13.46 dBm Wi-Fi(802.11n40): 8.26 dBm Bluetooth 3.0: 0.84dBm BTLE: -7.52dBm
Dimensions (L*W*H):	137mm (L) × 65 mm (W) × 10 mm (H)
Power Source:	3.7 V _{DC} Rechargeable Battery
Normal Operation:	Head and Body-worn

REFERENCE, STANDARDS, AND GUIDELINES

FCC:

The Report and Order requires routine SAR evaluation prior to equipment authorization of portable transmitter devices, including portable telephones. For consumer products, the applicable limit is 1.6 mW/g as recommended by the ANSI/IEEE standard C95.1-1992 [6] for an uncontrolled environment (Paragraph 65). According to the Supplement C of OET Bulletin 65 "Evaluating Compliance with FCC Guide-lines for Human Exposure to Radio frequency Electromagnetic Fields", released on Jun 29, 2001 by the FCC, the device should be evaluated at maximum output power (radiated from the antenna) under "worst-case" conditions for normal or intended use, incorporating normal antenna operating positions, device peak performance frequencies and positions for maximum RF energy coupling.

This report describes the methodology and results of experiments performed on wireless data terminal. The objective was to determine if there is RF radiation and if radiation is found, what is the extent of radiation with respect to safety limits. SAR (Specific Absorption Rate) is the measure of RF exposure determined by the amount of RF energy absorbed by human body (or its parts) – to determine how the RF energy couples to the body or head which is a primary health concern for body worn devices. The limit below which the exposure to RF is considered safe by regulatory bodies in North America is 1.6 mW/g average over 1 gram of tissue mass.

CE:

The order requires routine SAR evaluation prior to equipment authorization of portable transmitter devices, including portable telephones. For consumer products, the applicable limit is 2 mW/g as recommended by EN62209-1 for an uncontrolled environment. According to the Standard, the device should be evaluated at maximum output power (radiated from the antenna) under "worst-case" conditions for normal or intended use, incorporating normal antenna operating positions, device peak performance frequencies and positions for maximum RF energy coupling.

This report describes the methodology and results of experiments performed on wireless data terminal. The objective was to determine if there is RF radiation and if radiation is found, what is the extent of radiation with respect to safety limits. SAR (Specific Absorption Rate) is the measure of RF exposure determined by the amount of RF energy absorbed by human body (or its parts) – to determine how the RF energy couples to the body or head which is a primary health concern for body worn devices. The limit below which the exposure to RF is considered safe by regulatory bodies in Europe is 2 mW/g average over 10 gram of tissue mass.

The test configurations were laid out on a specially designed test fixture to ensure the reproducibility of measurements. Each configuration was scanned for SAR. Analysis of each scan was carried out to characterize the above effects in the device.

SAR Limits**FCC Limit (1g Tissue)**

EXPOSURE LIMITS	SAR (W/kg)	
	(General Population / Uncontrolled Exposure Environment)	(Occupational / Controlled Exposure Environment)
Spatial Average (averaged over the whole body)	0.08	0.4
Spatial Peak (averaged over any 1 g of tissue)	1.60	8.0
Spatial Peak (hands/wrists/feet/ankles averaged over 10 g)	4.0	20.0

CE Limit (10g Tissue)

EXPOSURE LIMITS	SAR (W/kg)	
	(General Population / Uncontrolled Exposure Environment)	(Occupational / Controlled Exposure Environment)
Spatial Average (averaged over the whole body)	0.08	0.4
Spatial Peak (averaged over any 10 g of tissue)	2.0	10
Spatial Peak (hands/wrists/feet/ankles averaged over 10 g)	4.0	20.0

Population/Uncontrolled Environments are defined as locations where there is the exposure of individual who have no knowledge or control of their exposure.

Occupational/Controlled Environments are defined as locations where there is exposure that may be incurred by people who are aware of the potential for exposure (i.e. as a result of employment or occupation).

General Population/Uncontrolled environments Spatial Peak limit 1.6W/kg (FCC) & 2 W/kg (CE) applied to the EUT.

FACILITIES

The test site used by Bay Area Compliance Laboratories Corp. (Shenzhen) to collect data is located at 6/F, the 3rd Phase of WanLi Industrial Building, Shi Hua Road, Fu Tian Free Trade Zone, Shenzhen, Guangdong, P.R. of China

DESCRIPTION OF TEST SYSTEM

These measurements were performed with ALSAS 10 Universal Integrated SAR Measurement system from APREL Laboratories.

ALSAS-10U System Description

ALSAS-10-U is fully compliant with the technical and scientific requirements of IEEE 1528, IEC 62209, CENELEC, ARIB, ACA, and the Federal Communications Commission. The system comprises of a six axes articulated robot which utilizes a dedicated controller. ALSAS-10U uses the latest methodologies. And FDTD modeling to provide a platform which is repeatable with minimum uncertainty.

Applications

Predefined measurement procedures compliant with the guidelines of CENELEC, IEEE, IEC, FCC, etc are utilized during the assessment for the device. Automatic detection for all SAR maxima are embedded within the core architecture for the system, ensuring that peak locations used for centering the zoom scan are within a 1mm resolution and a 0.05mm repeatable position. System operation range currently available up-to 6 GHz in simulated tissue.

Area Scans

Area scans are defined prior to the measurement process being executed with a user defined variable spacing between each measurement point (integral) allowing low uncertainty measurements to be conducted. Scans defined for FCC applications utilize a 10mm² step integral, with 1mm interpolation used to locate the peak SAR area used for zoom scan assessments.

Where the system identifies multiple SAR peaks (which are within 25% of peak value) the system will provide the user with the option of assessing each peak location individually for zoom scan averaging.

Zoom Scan (Cube Scan Averaging)

The averaging zoom scan volume utilized in the ALSAS-10U software is in the shape of a cube and the side dimension of a 1 g or 10 g mass is dependent on the density of the liquid representing the simulated tissue. A density of 1000 kg/m³ is used to represent the head and body tissue density and not the phantom liquid density, in order to be consistent with the definition of the liquid dielectric properties, i.e. the side length of the 1 g cube is 10mm, with the side length of the 10 g cube 21,5mm.

When the cube intersects with the surface of the phantom, it is oriented so that 3 vertices touch the surface of the shell or the center of a face is tangent to the surface. The face of the cube closest to the surface is modified in order to conform to the tangent surface.

The zoom scan integer steps can be user defined so as to reduce uncertainty, but normal practice for typical test applications (including FCC) utilize a physical step of 5x5x8 (8mmx8mmx5mm) providing a volume of 32mm in the X & Y axis, and 35mm in the Z axis.



ALSAS-10U Interpolation and Extrapolation Uncertainty

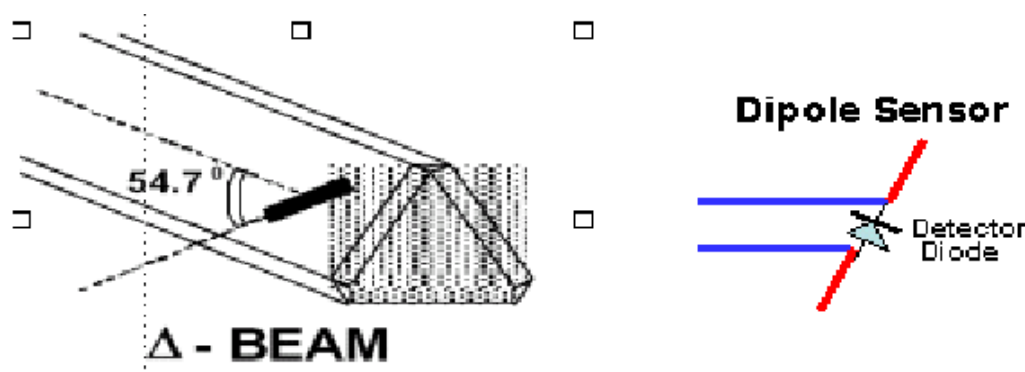
The overall uncertainty for the methodology and algorithms the used during the SAR calculation was evaluated using the data from IEEE 1528 based on the example f3 algorithm:

$$f_3(x, y, z) = A \frac{a^2}{\frac{a^2}{4} + x'^2 + y'^2} \cdot \left(e^{-\frac{2z}{a}} + \frac{a^2}{2(a + 2z)^2} \right)$$

Isotropic E-Field Probe

The isotropic E-Field probe has been fully calibrated and assessed for isotropicity, and boundary effect within a controlled environment. Depending on the frequency for which the probe is calibrated the method utilized for calibration will change.

The E-Field probe utilizes a triangular sensor arrangement as detailed in the diagram below:



SAR is assessed with a calibrated probe which moves at a default height of 5mm from the center of the diode, which is mounted to the sensor, to the phantom surface (in the Z Axis). The 5mm offset height has been selected so as to minimize any resultant boundary effect due to the probe being in close proximity to the phantom surface.

The following algorithm is an example of the function used by the system for linearization of the output from the probe when measuring complex modulation schemes.

$$V_i = U_i + U_i^2 \cdot \frac{cf}{dcp_i}$$

Isotropic E-Field Probe Specification

Calibration Method	Frequency Dependent Below 1 GHz Calibration in air performed in a TEM Cell Above 1 GHz Calibration in air performed in waveguide
Sensitivity	$0.70 \mu\text{V}/(\text{V}/\text{m})^2$ to $0.85 \mu\text{V}/(\text{V}/\text{m})^2$
Dynamic Range	0.0005 W/kg to 100 W/kg
Isotropic Response	Better than 0.1 dB
Diode Compression Point (DCP)	Calibration for Specific Frequency
Probe Tip Diameter	< 2.9 mm
Sensor Offset	1.56 (+/- 0.02 mm)
Probe Length	289 mm
Video Bandwidth	@ 500 Hz: 1 dB @ 1.02 kHz: 3 dB
Boundary Effect	Less than 2.1% for distance greater than 0.58 mm
Spatial Resolution	The spatial resolution uncertainty is less than 1.5% for 4.9mm diameter probe. The spatial resolution uncertainty is less than 1.0% for 2.5mm diameter probe

Boundary Detection Unit and Probe Mounting Device

ALSAS-10U incorporates a boundary detection unit with a sensitivity of 0.05mm for detecting all types of surfaces. The robust design allows for detection during probe tilt (probe normalize) exercises, and utilizes a second stage emergency stop. The signal electronics are fed directly into the robot controller for high accuracy surface detection in lateral and axial detection modes (X, Y, & Z).

The probe is mounted directly onto the Boundary Detection unit for accurate tooling and displacement calculations controlled by the robot kinematics. The probe is connect to an isolated probe interconnect where the output stage of the probe is fed directly into the amplifier stage of the Daq-Paq.

Daq-Paq (Analog to Digital Electronics)

ALSAS-10U incorporates a fully calibrated Daq-Paq (analog to digital conversion system) which has a 4 channel input stage, sent via a 2 stage auto-set amplifier module. The input signal is amplified accordingly so as to offer a dynamic range from $5\mu\text{V}$ to 800mV. Integration of the fields measured is carried out at board level utilizing a Co-Processor which then sends the measured fields down into the main computational module in digitized form via an RS232 communications port. Probe linearity and duty cycle compensation is carried out within the main Daq-Paq module.

ADC	12 Bit
Amplifier Range	20 mV to 200 mV and 150 mV to 800 mV
Field Integration	Local Co-Processor utilizing proprietary integration algorithms
Number of Input Channels	4 in total 3 dedicated and 1 spare
Communication	Packet data via RS232

Axis Articulated Robot

ALSAS-10U utilizes a six axis articulated robot, which is controlled using a Pentium based real-time movement controller. The movement kinematics engine utilizes proprietary (Thermo CRS) interpolation and extrapolation algorithms, which allow full freedom of movement for each of the six joints within the working envelope. Utilization of joint 6 allows for full probe rotation with a tolerance better than 0.05mm around the central axis.



Robot/Controller Manufacturer	Thermo CRS
Number of Axis	Six independently controlled axis
Positioning Repeatability	0.05 mm
Controller Type	Single phase Pentium based C500C
Robot Reach	710 mm
Communication	RS232 and LAN compatible

ALSAS Universal Workstation

ALSAS Universal workstation allows for repeatability and fast adaptability. It allows users to do calibration, testing and measurements using different types of phantoms with one set up, which significantly speeds up the measurement process.

Universal Device Positioner

The universal device positioner allows complete freedom of movement of the EUT. Developed to hold a EUT in a free-space scenario any additional loading attributable to the material used in the construction of the positioner has been eliminated. Repeatability has been enhanced through the linear scales which form the design used to indicate positioning for any given test scenario in all major axes. A 15° tilt indicator is included for the of aid cheek to tilt movements for head SAR analysis. Overall uncertainty for measurements have been reduced due to the design of the Universal device positioner, which allows positioning of a device in as near to a free-space scenario as possible, and by providing the means for complete repeatability.

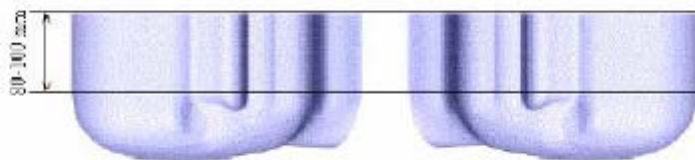


Phantom Types

The ALSAS-10U allows the integration of multiple phantom types. SAM Phantoms fully compliant with IEEE 1528, Universal Phantom, and Universal Flat.

APREL SAM Phantoms

The SAM phantoms developed using the IEEE SAM CAD file. They are fully compliant with the requirements for both IEEE 1528 and FCC Supplement C. Both the left and right SAM phantoms are interchangeable, transparent and include the IEEE 1528 grid with visible NF and MB lines.



APREL Laboratories Universal Phantom

The Universal Phantom is used on the ALSAS-10U as a system validation phantom. The Universal Phantom has been fully validated both experimentally from 800MHz to 6GHz and numerically using XFDTD numerical software.

The shell thickness is 2mm overall, with a 4mm spacer located at the NF/MB intersection providing an overall thickness of 6mm in line with the requirements of IEEE-1528.

The design allows for fast and accurate measurements, of handsets, by allowing the conservative SAR to be evaluated at on frequency for both left and right head experiments in one measurement.



Tissue Dielectric Parameters for Head and Body Phantoms

The head tissue dielectric parameters recommended by the IEEE SCC-34/SC-2 in P1528 have been incorporated in the following table. These head parameters are derived from planar layer models simulating the highest expected SAR for the dielectric properties and tissue thickness variations in a human head. Other head and body tissue parameters that have not been specified in P1528 are derived from the tissue dielectric parameters computed from the 4-Cole-Cole equations described in Reference [12] and extrapolated according to the head parameters specified in P1528.

Ingredients (% by weight)	Frequency (MHz)									
	450		835		915		1900		2450	
Tissue Type	Head	Body	Head	Body	Head	Body	Head	Body	Head	Body
Water	38.56	51.16	41.45	52.4	41.05	56.0	54.9	40.4	62.7	73.2
Salt (NaCl)	3.95	1.49	1.45	1.4	1.35	0.76	0.18	0.5	0.5	0.04
Sugar	56.32	46.78	56.0	45.0	56.5	41.76	0.0	58.0	0.0	0.0
HEC	0.98	0.52	1.0	1.0	1.0	1.21	0.0	1.0	0.0	0.0
Bactericide	0.19	0.05	0.1	0.1	0.1	0.27	0.0	0.1	0.0	0.0
Triton x-100	0.0	0.0	0.0	0.0	0.0	0.0	0.0	0.0	36.8	0.0
DGBE	0.0	0.0	0.0	0.0	0.0	0.0	44.92	0.0	0.0	26.7
Dielectric Constant	43.42	58.0	42.54	56.1	42.0	56.8	39.9	54.0	39.8	52.5
Conductivity (s/m)	0.85	0.83	0.91	0.95	1.0	1.07	1.42	1.45	1.88	1.78

Recommended Tissue Dielectric Parameters for Head and Body

Frequency (MHz)	Head Tissue		Body Tissue	
	ϵ_r	σ (S/m)	ϵ_r	σ (S/m)
150	52.3	0.76	61.9	0.80
300	45.3	0.87	58.2	0.92
450	43.5	0.87	56.7	0.94
835	41.5	0.90	55.2	0.97
900	41.5	0.97	55.0	1.05
915	41.5	0.98	55.0	1.06
1450	40.5	1.20	54.0	1.30
1610	40.3	1.29	53.8	1.40
1800-2000	40.0	1.40	53.3	1.52
2450	39.2	1.80	52.7	1.95
3000	38.5	2.40	52.0	2.73
5800	35.3	5.27	48.2	6.00

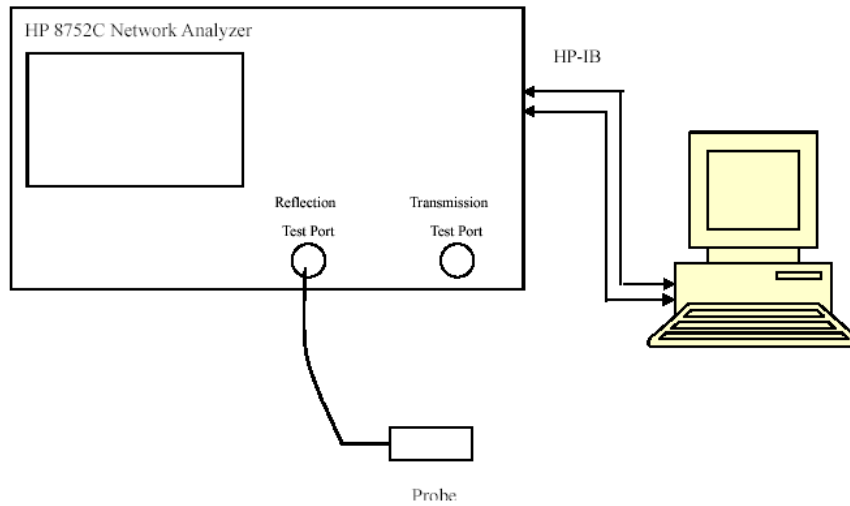
EQUIPMENT LIST AND CALIBRATION

Equipments List & Calibration Information

Equipment	Model	Calibration Date	S/N
CRS F3 robot	ALS-F3	N/A	RAF0805352
CRS F3 Software	ALS-F3-SW	N/A	N/A
CRS C500C controller	ALS-C500	N/A	RCF0805379
Probe mounting device & Boundary Detection Sensor System	ALS-PMDPS-3	N/A	120-00270
Universal Work Station	ALS-UWS	N/A	100-00157
Data Acquisition Package	ALS-DAQ-PAQ-3	2014-10-14	110-00212
Miniature E-Field Probe	ALS-E-020	2014-10-14	500-00283
Dipole, 835MHz	ALS-D-835-S-2	2014-10-08	180-00558
Dipole, 1900MHz	ALS-D-1900-S-2	2014-10-09	210-00710
Dipole, 2450MHz	ALS-D-2450-S-2	2014-10-09	220-00758
Dipole Spacer	ALS-DS-U	N/A	250-00907
Device holder/Positioner	ALS-H-E-SET-2	N/A	170-00510
Left ear SAM phantom	ALS-P-SAM-L	N/A	130-00311
Right ear SAM phantom	ALS-P-SAM-R	N/A	140-00359
UniPhantom	ALS-P-UP-1	N/A	150-00413
Simulated Tissue 835 MHz Head	ALS-TS-835-H	Each Time	270-01002
Simulated Tissue 835 MHz Body	ALS-TS-835-B	Each Time	270-02101
Simulated Tissue 1900 MHz Head	ALS-TS-1900-H	Each Time	295-01103
Simulated Tissue 1900 MHz Body	ALS-TS-1900-B	Each Time	296-02102
Simulated Tissue 2450 MHz Head	ALS-TS-2450-H	Each Time	290-01108
Simulated Tissue 2450 MHz Body	ALS-TS-2450-B	Each Time	290-01109
Directional couple	DC6180A	N/A	0325849
Power Amplifier	5S1G4	N/A	71377
Dielectric probe kit	HP85070B	2014-06-13	N/A
Attenuator	3dB	2014-05-08	5402
Network analyzer	8752C	2014-06-03	3410A02356
Synthesized Sweeper	HP 8341B	2014-06-03	2624A00116
UNIVERSAL RADIO COMMUNICATION TESTER	CMU200	2013-11-23	106891
EMI Test Receiver	ESCI	2014-06-13	101746

SAR MEASUREMENT SYSTEM VERIFICATION

Liquid Verification



Liquid Verification Setup Block Diagram

Liquid Verification Results

Frequency	Liquid Type	Liquid Parameter		Target Value		Delta (%)		Tolerance (%)
		ϵ_r	σ (S/m)	ϵ_r	σ (S/m)	$\Delta\epsilon_r$	$\Delta\sigma$ (S/m)	
824.2	Head	41.02	0.90	41.50	0.90	-1.157	0.000	±5
	Body	53.87	0.95	55.20	0.97	-2.409	-2.062	±5
826.4	Head	41.04	0.91	41.50	0.90	-1.108	1.111	±5
	Body	53.81	0.95	55.20	0.97	-2.518	-2.062	±5
836.6	Head	41.03	0.92	41.50	0.90	-1.133	2.222	±5
	Body	53.79	0.96	55.20	0.97	-2.554	-1.031	±5
846.6	Head	41.07	0.92	41.50	0.90	-1.036	2.222	±5
	Body	53.82	0.97	55.20	0.97	-2.500	0.000	±5
848.8	Head	41.02	0.91	41.50	0.90	-1.157	1.111	±5
	Body	53.85	0.97	55.20	0.97	-2.446	0.000	±5
1850.2	Head	39.57	1.36	40.00	1.40	-1.075	-2.857	±5
	Body	52.10	1.49	53.30	1.52	-2.251	-1.974	±5
1852.4	Head	39.55	1.37	40.00	1.40	-1.125	-2.143	±5
	Body	51.84	1.49	53.30	1.52	-2.739	-1.974	±5
1880.0	Head	39.68	1.40	40.00	1.40	-0.800	0.000	±5
	Body	51.77	1.52	53.30	1.52	-2.871	0.000	±5
1907.6	Head	39.69	1.41	40.00	1.40	-0.775	0.714	±5
	Body	51.85	1.53	53.30	1.52	-2.720	0.658	±5
1909.8	Head	39.68	1.42	40.00	1.40	-0.800	1.429	±5
	Body	52.00	1.54	53.30	1.52	-2.439	1.316	±5
2412	Head	39.83	1.81	39.20	1.80	1.607	0.556	±5
	Body	52.80	1.99	52.70	1.95	0.190	2.051	±5
2437	Head	39.69	1.82	39.20	1.80	1.250	1.111	±5
	Body	52.83	1.97	52.70	1.95	0.247	1.026	±5
2462	Head	39.98	1.82	39.20	1.80	1.990	1.111	±5
	Body	52.83	1.97	52.70	1.95	0.247	1.026	±5

*Liquid Verification was performed on 2015-03-28.

Please refer to the following tables.

835 MHz Head				835 MHz Body		
Frequency (MHz)	e'	e''		Frequency (MHz)	e'	e''
824.0	41.0243	19.6722		824.0	53.8688	20.6975
824.5	41.0657	19.6639		824.5	53.8021	20.6154
825.0	41.0627	19.6898		825.0	53.8619	20.6407
825.5	40.9958	19.7674		825.5	53.7945	20.6542
826.0	41.0852	19.7062		826.0	53.8604	20.6687
826.5	41.0383	19.7597		826.5	53.8126	20.6789
827.0	41.0929	19.7663		827.0	53.7831	20.6231
827.5	41.0255	19.6732		827.5	53.8635	20.6275
828.0	41.0892	19.7093		828.0	53.8024	20.6505
828.5	41.0373	19.7637		828.5	53.8110	20.6872
829.0	41.0846	19.7105		829.0	53.7796	20.6821
829.5	41.0774	19.7035		829.5	53.8716	20.6639
830.0	41.0885	19.6867		830.0	53.8457	20.6550
830.5	41.0441	19.7680		830.5	53.8248	20.7094
831.0	41.0100	19.7346		831.0	53.8208	20.6869
831.5	41.0826	19.7433		831.5	53.7811	20.6240
832.0	41.0173	19.7384		832.0	53.8499	20.6609
832.5	41.0762	19.7651		832.5	53.7729	20.6724
833.0	41.0334	19.7535		833.0	53.7809	20.6989
833.5	41.0510	19.7205		833.5	53.7986	20.6298
834.0	41.0449	19.7511		834.0	53.8647	20.6535
834.5	41.0632	19.7660		834.5	53.8658	20.7086
835.0	41.0283	19.7496		835.0	53.8396	20.6504
835.5	41.0292	19.7120		835.5	53.7877	20.6648
836.0	41.0290	19.7383		836.0	53.8694	20.7002
836.5	41.0143	19.7730		836.5	53.8260	20.6868
837.0	41.0889	19.6916		837.0	53.8159	20.6399
837.5	41.1072	19.7620		837.5	53.8256	20.6817
838.0	41.0462	19.7206		838.0	53.8338	20.6747
838.5	41.0985	19.6821		838.5	53.8024	20.6378
839.0	41.0468	19.7414		839.0	53.8192	20.6542
839.5	41.0251	19.7173		839.5	53.8048	20.6736
840.0	41.0821	19.4301		840.0	53.8199	20.6937
840.5	41.0526	19.3860		840.5	53.7951	20.6756
841.0	41.0160	19.4096		841.0	53.8686	20.6221
841.5	41.0784	19.3677		841.5	53.8397	20.6763
842.0	41.0721	19.4148		842.0	53.7955	20.6941
842.5	41.0071	19.3655		842.5	53.7833	20.6297
843.0	41.0340	19.4689		843.0	53.7765	20.6410
843.5	41.1020	19.4390		843.5	53.7966	20.7027
844.0	41.0797	19.4036		844.0	53.8073	20.6472
844.5	41.0383	19.4318		844.5	53.8564	20.6560
845.0	41.0163	19.4128		845.0	53.8324	20.6554
845.5	41.0199	19.3786		845.5	53.7894	20.6963
846.0	41.0724	19.4093		846.0	53.7780	20.6648
846.5	41.0665	19.4622		846.5	53.8235	20.6356
847.0	41.0599	19.4180		847.0	53.8050	20.6355
847.5	41.0927	19.4474		847.5	53.8103	20.6779
848.0	41.0635	19.4373		848.0	53.8722	20.6613
848.5	41.1046	19.4584		848.5	53.8206	20.6735
849.0	41.0245	19.3716		849.0	53.8502	20.6258

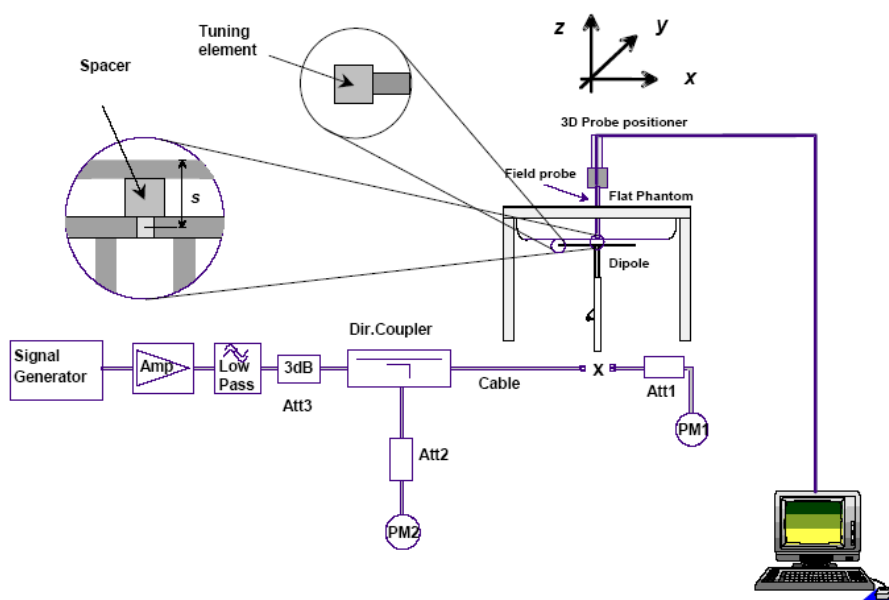
1900 MHz Head				1900 MHz Body		
Frequency (MHz)	e'	e''		Frequency (MHz)	e'	e''
1850.0	39.5729	13.2651		1850.0	52.0963	14.5052
1851.2	39.5560	13.2828		1851.2	52.0402	14.4416
1852.4	39.5527	13.2784		1852.4	51.8381	14.4451
1853.6	39.5441	13.2817		1853.6	51.8827	14.4889
1854.8	39.6169	13.2971		1854.8	51.9976	14.4830
1856.0	39.6073	13.2445		1856.0	52.0053	14.5244
1857.2	39.6213	13.3921		1857.2	52.0214	14.5726
1858.4	39.6934	13.3826		1858.4	51.8979	14.4987
1859.6	39.5641	13.2725		1859.6	51.8232	14.4897
1860.8	39.7128	13.3702		1860.8	52.0255	14.4651
1862.0	39.6759	13.2457		1862.0	51.9091	14.4854
1863.2	39.5500	13.3487		1863.2	52.0496	14.4520
1864.4	39.5772	13.3681		1864.4	51.7565	14.5408
1865.6	39.6107	13.2603		1865.6	51.8929	14.4243
1866.8	39.6373	13.2885		1866.8	52.0420	14.5775
1868.0	39.5482	13.4097		1868.0	52.0428	14.4243
1869.2	39.5925	13.2594		1869.2	51.9884	14.4920
1870.4	39.6992	13.3739		1870.4	52.0112	14.4203
1871.6	39.5555	13.2814		1871.6	51.9002	14.4555
1872.8	39.5947	13.2574		1872.8	51.9784	14.5469
1874.0	39.6334	13.3450		1874.0	52.0020	14.5769
1875.2	39.6465	13.2734		1875.2	51.8479	14.4902
1876.4	39.6184	13.2835		1876.4	51.9175	14.4989
1877.6	39.6443	13.3275		1877.6	51.9760	14.5083
1878.8	39.6621	13.3436		1878.8	51.9180	14.4195
1880.0	39.6844	13.4204		1880.0	51.7682	14.5256
1881.2	39.5785	13.3178		1881.2	51.9402	14.5617
1882.4	39.7167	13.3919		1882.4	51.9034	14.5521
1883.6	39.5659	13.4299		1883.6	51.9197	14.5545
1884.8	39.5484	13.3150		1884.8	51.7896	14.4294
1886.0	39.7249	13.3248		1886.0	51.9164	14.5029
1887.2	39.7230	13.3343		1887.2	51.7582	14.4359
1888.4	39.5993	13.3337		1888.4	52.0290	14.4159
1889.6	39.6300	13.4248		1889.6	52.0670	14.4652
1890.8	39.7118	13.4282		1890.8	52.1003	14.5155
1892.0	39.6102	13.3498		1892.0	51.9653	14.5434
1893.2	39.6031	13.3324		1893.2	52.0135	14.5419
1894.4	39.6660	13.4037		1894.4	51.8513	14.5475
1895.6	39.6328	13.2534		1895.6	51.9141	14.5331
1896.8	39.5589	13.3532		1896.8	51.7473	14.4531
1898.0	39.6777	13.3946		1898.0	51.7742	14.4723
1899.2	39.7124	13.4353		1899.2	51.7692	14.4695
1900.4	39.7107	13.3017		1900.4	51.7377	14.4513
1901.6	39.6132	13.2445		1901.6	51.7889	14.5412
1902.8	39.5824	13.3644		1902.8	51.8225	14.5361
1904.0	39.7394	13.2682		1904.0	51.9583	14.4548
1905.2	39.6911	13.3161		1905.2	51.8883	14.5261
1906.4	39.5524	13.2953		1906.4	51.8839	14.5643
1907.6	39.6889	13.2841		1907.6	51.8547	14.4338
1908.8	39.6931	13.2997		1908.8	51.8933	14.5327
1910.0	39.6814	13.3476		1910.0	51.9953	14.4778

2450 MHz Head				2450 MHz Body		
Frequency (MHz)	e'	e''		Frequency (MHz)	e'	e''
2410.0	39.4875	13.4223		2410.0	52.7956	14.86973
2411.0	39.7957	13.5203		2411.0	52.8073	14.4906
2412.0	39.6942	13.2811		2412.0	52.7576	14.9346
2413.0	39.7166	13.2716		2413.0	52.8144	15.1526
2414.0	39.8597	13.4236		2414.0	52.7976	14.6094
2415.0	39.7395	13.4649		2415.0	52.8218	14.8327
2416.0	39.9837	13.4548		2416.0	52.7965	14.9612
2417.0	39.7250	13.5507		2417.0	52.7644	15.0022
2418.0	39.9593	13.3446		2418.0	52.7810	14.9480
2419.0	39.4931	13.3954		2419.0	52.7787	14.9336
2420.0	39.9588	13.5644		2420.0	52.7677	14.5246
2421.0	39.9785	13.5250		2421.0	52.7781	14.6265
2422.0	39.8315	13.4556		2422.0	52.7955	14.7942
2423.0	39.8809	13.3414		2423.0	52.7771	15.0192
2424.0	39.9769	13.3463		2424.0	52.7680	14.4597
2425.0	39.8148	13.5179		2425.0	52.7784	14.6569
2426.0	39.9150	13.4580		2426.0	52.7534	14.5822
2427.0	39.7597	13.5523		2427.0	52.7965	14.5917
2428.0	39.5872	13.5112		2428.0	52.8107	14.0995
2429.0	39.9266	13.3170		2429.0	52.7449	14.3186
2430.0	39.6016	13.3414		2430.0	52.7963	14.5365
2431.0	39.6733	13.4689		2431.0	52.7712	14.3997
2432.0	39.9463	13.3087		2432.0	52.7503	14.7939
2433.0	39.7383	13.3044		2433.0	52.7920	14.6673
2434.0	39.8728	13.5862		2434.0	52.7509	14.3595
2435.0	39.7927	13.3288		2435.0	52.8028	14.3078
2436.0	39.7724	13.5105		2436.0	52.8236	14.6168
2437.0	39.6932	13.4228		2437.0	52.8314	14.5717
2438.0	39.8609	13.4702		2438.0	52.7515	14.4708
2440.0	39.6474	13.3755		2440.0	52.8389	14.4259
2441.0	39.5242	13.2762		2441.0	52.8180	14.3695
2442.0	39.9897	13.5932		2442.0	52.7984	14.3377
2443.0	39.9616	13.3782		2443.0	52.7666	14.0522
2444.0	39.5814	13.3749		2444.0	52.8066	14.5842
2445.0	39.8125	13.4286		2445.0	52.8325	14.5473
2446.0	39.8689	13.5247		2446.0	52.7674	14.3556
2447.0	39.9072	13.3344		2447.0	52.8223	14.6418
2448.0	39.4628	13.5026		2448.0	52.7564	14.2588
2449.0	39.6057	13.4296		2449.0	52.7945	14.5094
2450.0	39.8558	13.3368		2450.0	52.8275	14.6723
2451.0	39.4458	13.3576		2451.0	52.7815	14.8437
2452.0	39.5878	13.3650		2452.0	52.7808	14.4214
2453.0	39.5066	13.5929		2453.0	52.7700	14.5530
2454.0	39.7498	13.5251		2454.0	52.8162	14.0673
2455.0	39.9450	13.3384		2455.0	52.8049	14.3899
2456.0	39.8554	13.5257		2456.0	52.7619	14.1416
2457.0	39.8518	13.5156		2457.0	52.7547	14.5395
2458.0	39.5067	13.3296		2458.0	52.7891	14.4546
2459.0	39.7866	13.3573		2459.0	52.7797	14.4485
2460.0	39.7819	13.3404		2460.0	52.7527	14.6446
2461.0	39.5185	13.2843		2461.0	52.7404	14.1352
2462.0	39.9836	13.5433		2462.0	52.8277	14.2249

System Accuracy Verification

Prior to the assessment, the system validation kit was used to test whether the system was operating within its specifications of $\pm 10\%$. The validation results are tabulated below. And also the corresponding SAR plot is attached as well in the SAR plots files.

System Verification Setup Block Diagram



Probe and dipole antenna List and Detail

Manufacturer	Description	Model	Serial Number	Calibration Date	Calibration Due Date
APREL	Probe	ALS-E-020	500-00283	2014-10-14	2015-10-13
APREL	Dipole antenna(835MHz)	ALS-D-835-S-2	180-00558	2014-10-08	2017-10-07
APREL	Dipole antenna(1900MHz)	ALS-D-1900-S-2	210-00710	2014-10-09	2017-10-08

System Accuracy Check Results

Date	Frequency Band	Liquid Type	Measured SAR (W/Kg)		Target Value (W/Kg)	Delta (%)	Tolerance (%)
2015-03-28	835	Head	1g-SAR	9.193	9.773	-5.934	± 10
		Body	1g-SAR	9.772	9.736	0.369	± 10
	1900	Head	1g-SAR	41.359	39.481	4.756	± 10
		Body	1g-SAR	41.149	39.715	3.610	± 10
	2450	Head	1g-SAR		54.916		
		Body	1g-SAR		52.418		

*All SAR values are normalized to 1 Watt forward power.

SAR SYSTEM VALIDATION DATA**Test Laboratory: Bay Area Compliance Lab Corp. (Shenzhen)****System Performance Check 835 MHz Head Liquid****Dipole 835 MHz; Type: ALS-D-835-S-2; S/N: 180-00558****Product Data**

Device Name : Dipole 835 MHz
Serial No. : 180-00558
Type : Dipole
Model : ALS-D-835-S-2
Frequency Band : 835
Max. Transmit Pwr : 1 W
Drift Time : 3 min(s)
Power Drift-Start : 9.736 W/kg
Power Drift-Finish : 9.516 W/kg
Power Drift (%) : -2.206

Phantom Data

Name : APREL-Uni
Type : Uni-Phantom
Serial No. : System Default
Location : Center
Description : Default
Phantom Data

Tissue Data

Type : Head
Serial No. : 270-01002
Frequency : 835.0 MHz
Last Calib. Date : 28-Mar-2015
Temperature : 20.00 °C
Ambient Temp. : 21.00 °C
Humidity : 56.00 RH%
Epsilon : 41.03 F/m
Sigma : 0.92 S/m
Density : 1000.00 kg/cu. m

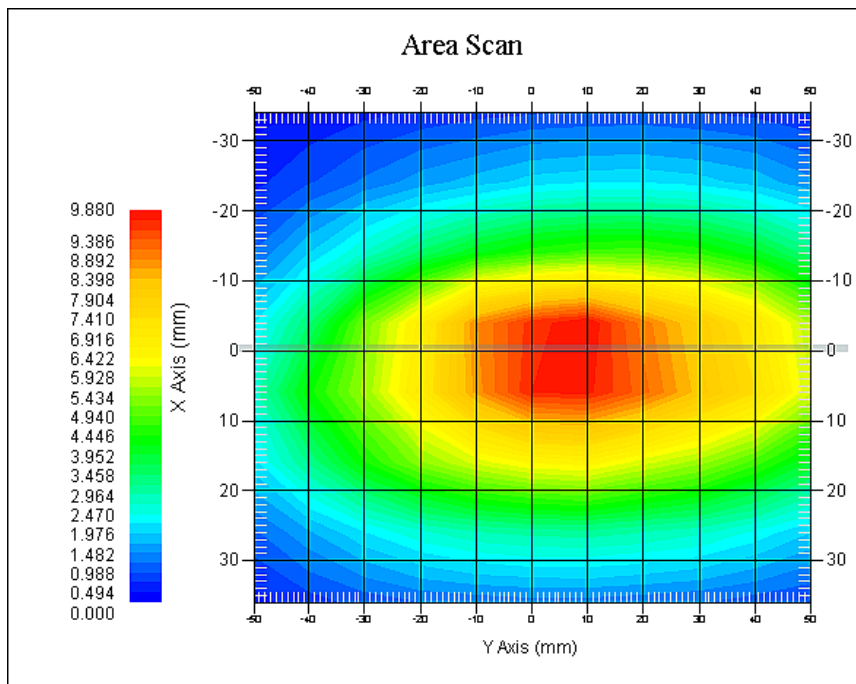
Probe Data

Name : E-Field
Model : E-020
Type : E-Field Triangle
Serial No. : 500-00283
Last Calib. Date : 14-Oct-2014
Frequency Band : 835
Duty Cycle Factor : 1
Conversion Factor : 5.9
Probe Sensitivity : 1.20 1.20 1.20 $\mu\text{V}/(\text{V}/\text{m})^2$
Compression Point : 95.00 mV
Offset : 1.56 mm

Measurement Data

Crest Factor : 1
Scan Type : Complete
Tissue Temp. : 21.00 °C
Ambient Temp. : 21.00 °C
Area Scan : 7x9x1 : Measurement x=10mm, y=10mm, z=4mm
Zoom Scan : 7x7x7 : Measurement x=5mm, y=5mm, z=5mm

1 gram SAR value : 9.472 W/kg
10 gram SAR value : 6.518 W/kg
Area Scan Peak SAR : 9.826 W/kg
Zoom Scan Peak SAR : 14.820 W/kg



835 MHz System Validation with Head Tissue

Test Laboratory: Bay Area Compliance Lab Corp. (Shenzhen)**System Performance Check 835 MHz Body Liquid****Dipole 835 MHz; Type: ALS-D-835-S-2; S/N: 180-00558**

Product Data

Device Name : Dipole 835 MHz
Serial No. : 180-00558
Type : Dipole
Model : ALS-D-835-S-2
Frequency Band : 835
Max. Transmit Pwr : 1 W
Drift Time : 3 min(s)
Power Drift-Start : 9.315 W/kg
Power Drift-Finish : 9.428 W/kg
Power Drift (%) : 1.237

Phantom Data

Name : APREL-Uni
Type : Uni-Phantom
Serial No. : System Default
Location : Center
Description : Default
Phantom Data

Tissue Data

Type : Body
Serial No. : 270-02101
Frequency : 835.0 MHz
Last Calib. Date : 28-Mar-2015
Temperature : 20.00 °C
Ambient Temp. : 21.00 °C
Humidity : 56.00 RH%
Epsilon : 53.84 F/m
Sigma : 0.96 S/m
Density : 1000.00 kg/cu. m

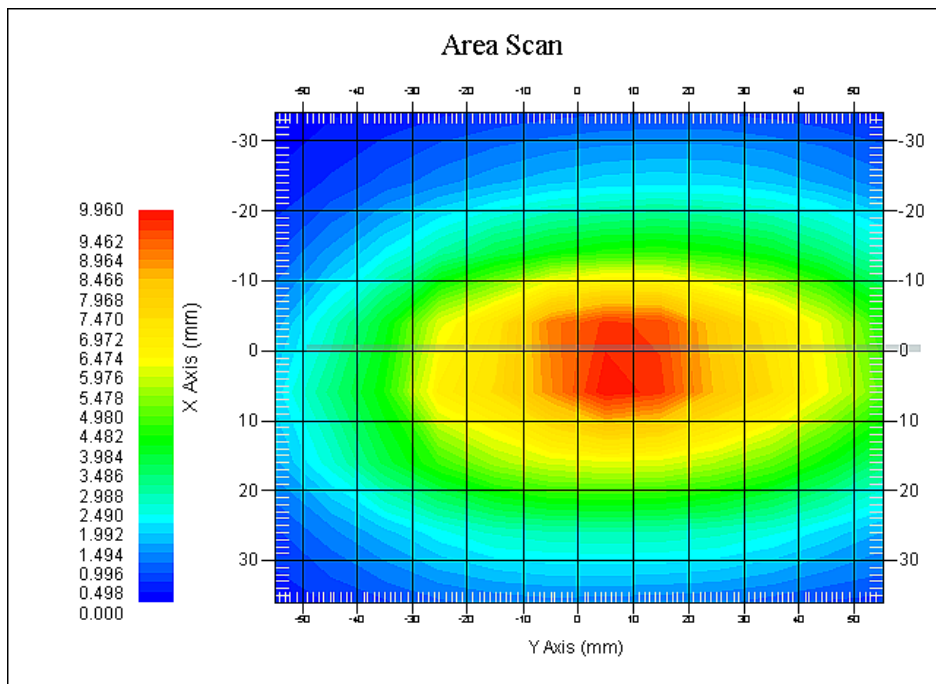
Probe Data

Name : E-Field
Model : E-020
Type : E-Field Triangle
Serial No. : 500-00283
Last Calib. Date : 14-Oct-2014
Frequency Band : 835
Duty Cycle Factor : 1
Conversion Factor : 5.9
Probe Sensitivity : 1.20 1.20 1.20 $\mu\text{V}/(\text{V}/\text{m})^2$
Compression Point : 95.00 mV
Offset : 1.56 mm

Measurement Data

Crest Factor : 1
Scan Type : Complete
Tissue Temp. : 21.00 °C
Ambient Temp. : 21.00 °C
Area Scan : 7x9x1 : Measurement x=10mm, y=10mm, z=4mm
Zoom Scan : 7x7x7 : Measurement x=5mm, y=5mm, z=5mm

1 gram SAR value : 9.528 W/kg
10 gram SAR value : 6.736 W/kg
Area Scan Peak SAR : 9.769 W/kg
Zoom Scan Peak SAR : 15.368 W/kg



835 MHz System Validation with Body Tissue

Test Laboratory: Bay Area Compliance Lab Corp. (Shenzhen)**System Performance Check 1900 MHz Head Liquid****Dipole 1900 MHz; Type: ALS-D-1900-S-2; S/N: 210-00710****Product Data**

Device Name : Dipole 1900MHz
Serial No. : 210-00710
Type : Dipole
Model : ALS-D-1900-S-2
Frequency Band : 1900
Max. Transmit Pwr : 1 W
Drift Time : 3 min(s)
Power Drift-Start : 34.363 W/kg
Power Drift-Finish : 34.106 W/kg
Power Drift (%) : -0.823

Phantom Data

Name : APREL-Uni
Type : Uni-Phantom
Serial No. : System Default
Location : Center
Description : Default

Tissue Data

Type : Head
Serial No. : 295-01103
Frequency : 1900.00 MHz
Last Calib. Date : 28-Mar-2015
Temperature : 20.00 °C
Ambient Temp. : 21.00 °C
Humidity : 56.00 RH%
Epsilon : 39.70 F/m
Sigma : 1.40 S/m
Density : 1000.00 kg/cu. M

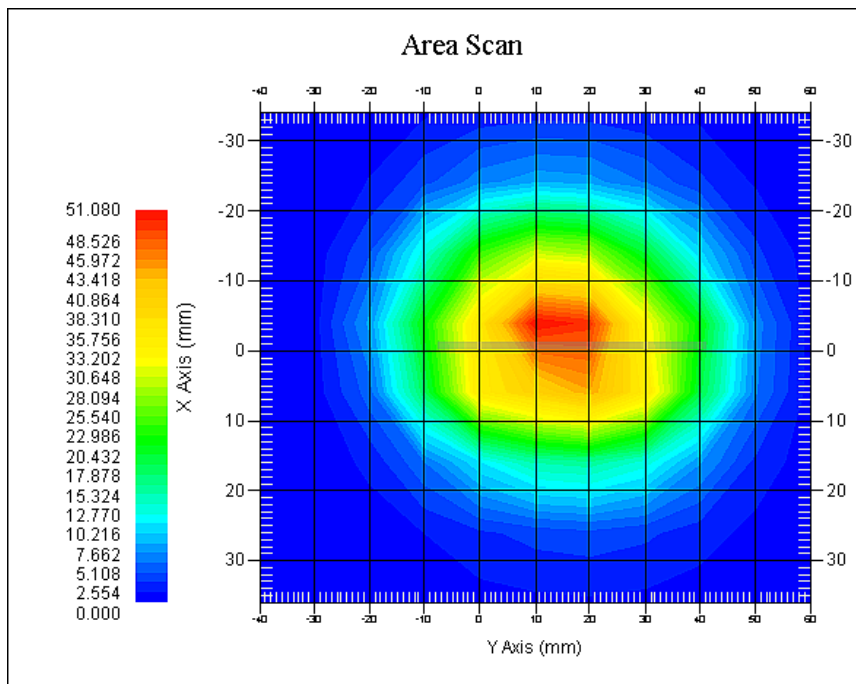
Probe Data

Name : E-Field
Model : E-020
Type : E-Field Triangle
Serial No. : 500-00283
Last Calib. Date : 14-Oct-2014
Frequency Band : 1900
Duty Cycle Factor : 1
Conversion Factor : 4.8
Probe Sensitivity : 1.20 1.20 1.20 $\mu\text{V}/(\text{V}/\text{m})^2$
Compression Point : 95.00 mV
Offset : 1.56 mm

Measurement Data

Crest Factor : 1
Scan Type : Complete
Tissue Temp. : 20.00 °C
Ambient Temp. : 20.00 °C
Area Scan : 7x9x1 : Measurement x=10mm, y=10mm, z=4mm
Zoom Scan : 7x7x7 : Measurement x=5mm, y=5mm, z=5mm

1 gram SAR value : 41.376 W/kg
10 gram SAR value : 21.568 W/kg
Area Scan Peak SAR : 49.790 W/kg
Zoom Scan Peak SAR : 70.220 W/kg



1900 MHz System Validation with Head Tissue

Test Laboratory: Bay Area Compliance Lab Corp. (Shenzhen)**System Performance Check 1900 MHz Body Liquid****Dipole 1900 MHz; Type: ALS-D-1900-S-2; S/N: 210-00710****Product Data**

Device Name : Dipole 1900MHz
Serial No. : 210-00710
Type : Dipole
Model : ALS-D-1900-S-2
Frequency Band : 1900
Max. Transmit Pwr : 1 W
Drift Time : 3 min(s)
Power Drift-Start : 45.374 W/kg
Power Drift-Finish : 45.864 W/kg
Power Drift (%) : 1.086

Phantom Data

Name : APREL-Uni
Type : Uni-Phantom
Serial No. : System Default
Location : Center
Description : Default

Tissue Data

Type : Body
Serial No. : 295-02102
Frequency : 1900.00 MHz
Last Calib. Date : 28-Mar-2015
Temperature : 20.00 °C
Ambient Temp. : 21.00 °C
Humidity : 56.00 RH%
Epsilon : 51.74 F/m
Sigma : 1.53 S/m
Density : 1000.00 kg/cu. m

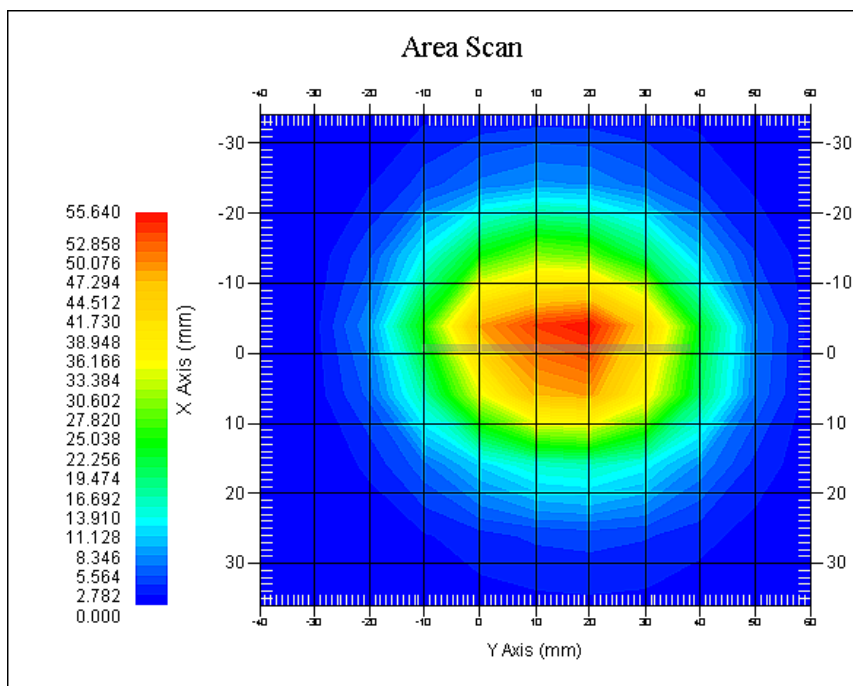
Probe Data

Name : E-Field
Model : E-020
Type : E-Field Triangle
Serial No. : 500-00283
Last Calib. Date : 14-Oct-2014
Frequency Band : 1900
Duty Cycle Factor : 1
Conversion Factor : 4.5
Probe Sensitivity : 1.20 1.20 1.20 $\mu\text{V}/(\text{V}/\text{m})^2$
Compression Point : 95.00 mV
Offset : 1.56 mm

Measurement Data

Crest Factor : 1
Scan Type : Complete
Tissue Temp. : 20.00 °C
Ambient Temp. : 21.00 °C
Area Scan : 7x9x1 : Measurement x=10mm, y=10mm, z=4mm
Zoom Scan : 7x7x7 : Measurement x=5mm, y=5mm, z=5mm

1 gram SAR value : 42.810 W/kg
10 gram SAR value : 22.304 W/kg
Area Scan Peak SAR : 55.233 W/kg
Zoom Scan Peak SAR : 75.188 W/kg



1900 MHz System Validation with Body Tissue

Test Laboratory: Bay Area Compliance Lab Corp. (Shenzhen)**System Performance Check 2450 MHz Head Liquid****Dipole 2450 MHz; Type: ALS-D-2450-S-2; S/N: 220-00758****Product Data**

Device Name : Dipole 2450MHz
Serial No. : 220-00758
Type : Dipole
Model : ALS-D-2450-S-2
Frequency Band : 2450 MHz
Max. Transmit Pwr : 1 W
Drift Time : 3 min(s)
Power Drift-Start : 48.374 W/kg
Power Drift-Finish : 49.269 W/kg
Power Drift (%) : 1.736

Phantom Data

Name : APREL-Uni
Type : Uni-Phantom
Serial No. : System Default
Location : Center
Description : Default

Tissue Data

Type : Head
Serial No. : 290-01109
Frequency : 2450.0 MHz
Last Calib. Date : 28-Mar-2015
Temperature : 20.00 °C
Ambient Temp. : 21.00 °C
Humidity : 50.00 RH%
Epsilon : 39.86 F/m
Sigma : 1.82 S/m
Density : 1000.00 kg/cu. M

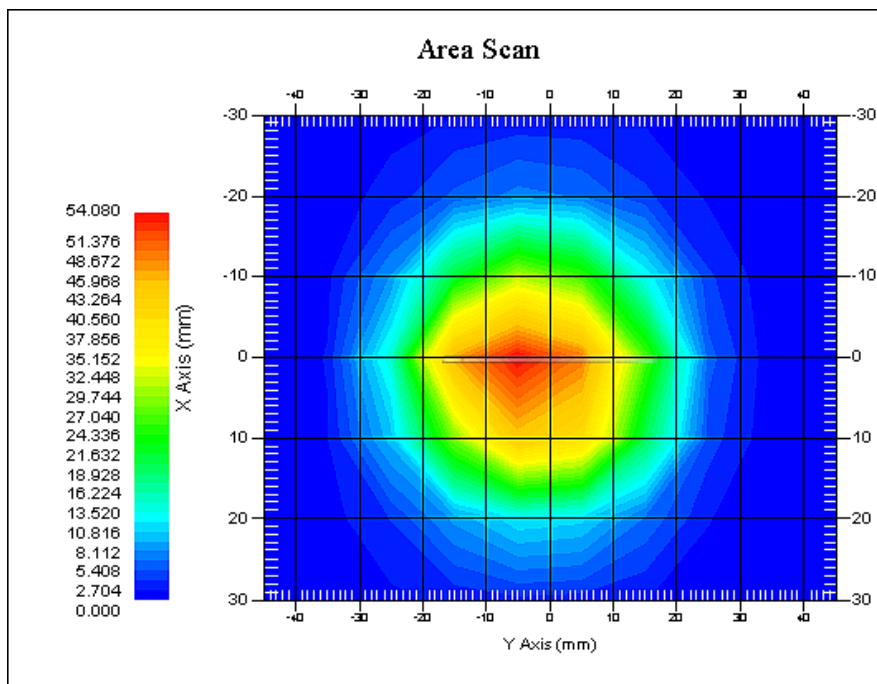
Probe Data

Name : E-Field
Model : E-020
Type : E-Field Triangle
Serial No. : 500-00283
Last Calib. Date : 14-Oct-2014
Frequency Band : 2450 MHz
Duty Cycle Factor : 1
Conversion Factor : 4.3
Probe Sensitivity : 1.20 1.20 1.20 $\mu\text{V}/(\text{V}/\text{m})^2$
Compression Point : 95.00 mV
Offset : 1.56 mm

Measurement Data

Crest Factor : 1
Scan Type : Complete
Tissue Temp. : 20.00 °C
Ambient Temp. : 20.00 °C
Area Scan : 7x9x1 : Measurement x=10mm, y=10mm, z=4mm
Zoom Scan : 7x7x7 : Measurement x=5mm, y=5mm, z=5mm

1 gram SAR value : 51.696 W/kg
 10 gram SAR value : 22.718 W/kg
 Area Scan Peak SAR : 54.025 W/kg
 Zoom Scan Peak SAR : 92.689 W/kg



2450 MHz System Validation with Head Tissue

Test Laboratory: Bay Area Compliance Lab Corp. (Shenzhen)**System Performance Check 2450 MHz Body Liquid****Dipole 2450 MHz; Type: ALS-D-2450-S-2; S/N: 220-00758****Product Data**

Device Name : Dipole 2450MHz
Serial No. : 220-00758
Type : Dipole
Model : ALS-D-2450-S-2
Frequency Band : 2450 MHz
Max. Transmit Pwr : 1 W
Drift Time : 3 min(s)
Power Drift-Start : 54.355 W/kg
Power Drift-Finish : 52.986 W/kg
Power Drift (%) : 2.367

Phantom Data

Name : APREL-Uni
Type : Uni-Phantom
Serial No. : System Default
Location : Center
Description : Default

Tissue Data

Type : BODY
Serial No. : 290-01109
Frequency : 2450.0 MHz
Last Calib. Date : 28-Mar-2015
Temperature : 20.00 °C
Ambient Temp. : 21.00 °C
Humidity : 50.00 RH%
Epsilon : 52.83 F/m
Sigma : 2.00 S/m
Density : 1000.00 kg/cu. M

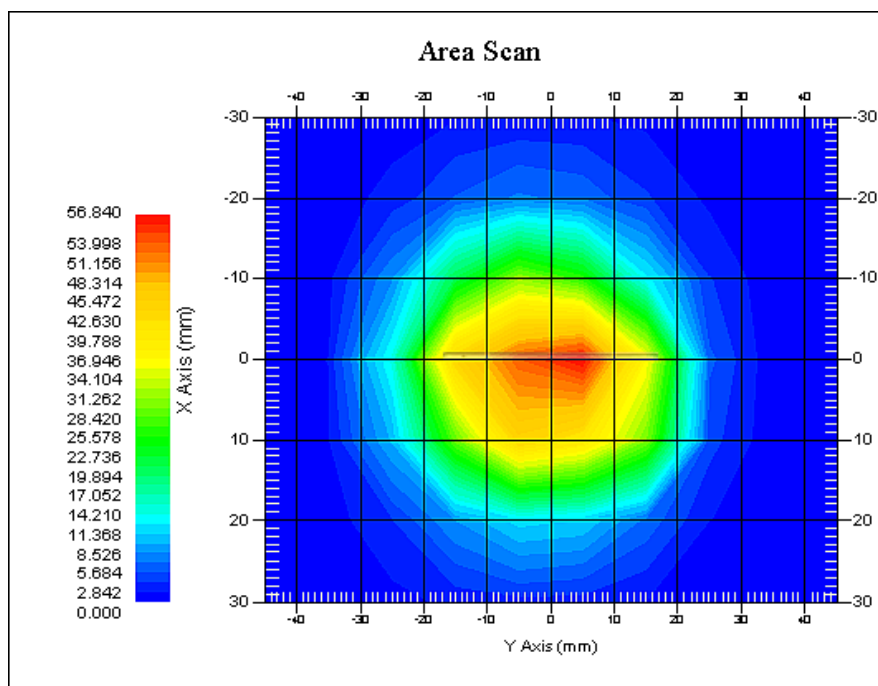
Probe Data

Name : E-Field
Model : E-020
Type : E-Field Triangle
Serial No. : 500-00283
Last Calib. Date : 14-Oct-2014
Frequency Band : 2450 MHz
Duty Cycle Factor : 1
Conversion Factor : 4.3
Probe Sensitivity : 1.20 1.20 1.20 $\mu\text{V}/(\text{V}/\text{m})^2$
Compression Point : 95.00 mV
Offset : 1.56 mm

Measurement Data

Crest Factor : 1
Scan Type : Complete
Tissue Temp. : 20.00 °C
Ambient Temp. : 20.00 °C
Area Scan : 8x9x1 : Measurement x=10mm, y=10mm, z=4mm
Zoom Scan : 7x7x7 : Measurement x=5mm, y=5mm, z=5mm

1 gram SAR value : 52.966 W/kg
10 gram SAR value : 23.711 W/kg
Area Scan Peak SAR : 56.655 W/kg
Zoom Scan Peak SAR : 95.396 W/kg



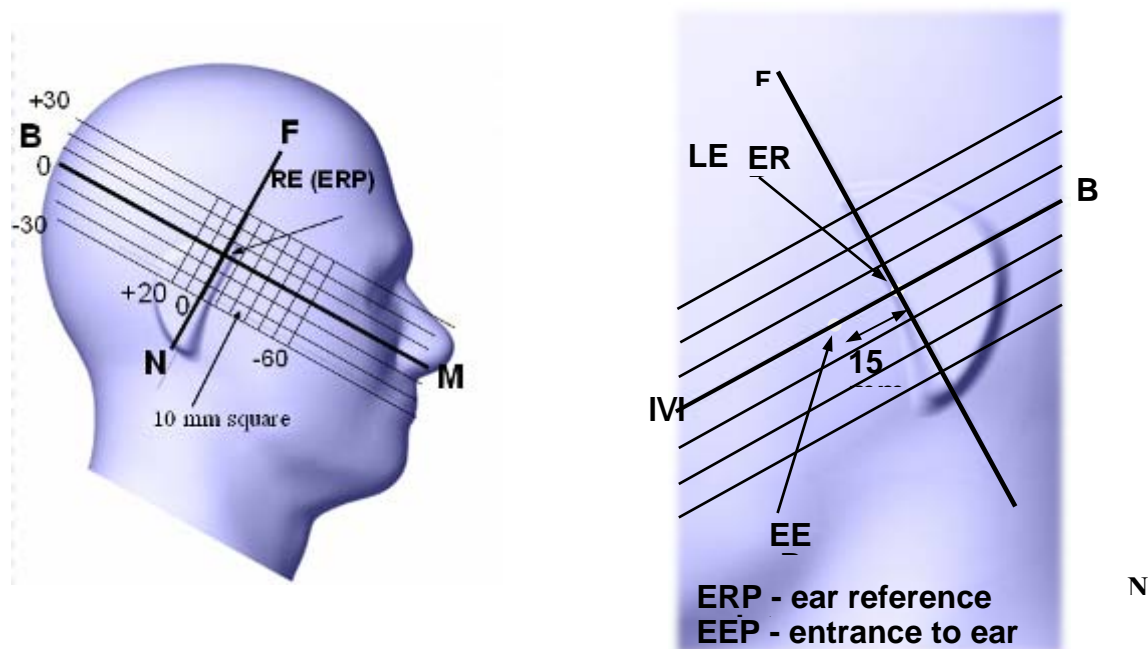
2450 MHz System Validation with Body Tissue

EUT TEST STRATEGY AND METHODOLOGY

Test Positions for Device Operating Next to a Person's Ear

This category includes most wireless handsets with fixed, retractable or internal antennas located toward the top half of the device, with or without a foldout, sliding or similar keypad cover. The handset should have its earpiece located within the upper $\frac{1}{4}$ of the device, either along the centerline or off-centered, as perceived by its users. This type of handset should be positioned in a normal operating position with the "test device reference point" located along the "vertical centerline" on the front of the device aligned to the "ear reference point". The "test device reference point" should be located at the same level as the center of the earpiece region. The "vertical centerline" should bisect the front surface of the handset at its top and bottom edges. A "ear reference point" is located on the outer surface of the head phantom on each ear spacer. It is located 1.5 cm above the center of the ear canal entrance in the "phantom reference plane" defined by the three lines joining the center of each "ear reference point" (left and right) and the tip of the mouth.

A handset should be initially positioned with the earpiece region pressed against the ear spacer of a head phantom. For the SCC-34/SC-2 head phantom, the device should be positioned parallel to the "N-F" line defined along the base of the ear spacer that contains the "ear reference point". For interim head phantoms, the device should be positioned parallel to the cheek for maximum RF energy coupling. The "test device reference point" is aligned to the "ear reference point" on the head phantom and the "vertical centerline" is aligned to the "phantom reference plane". This is called the "initial ear position". While maintaining these three alignments, the body of the handset is gradually adjusted to each of the following positions for evaluating SAR:



Cheek/Touch Position

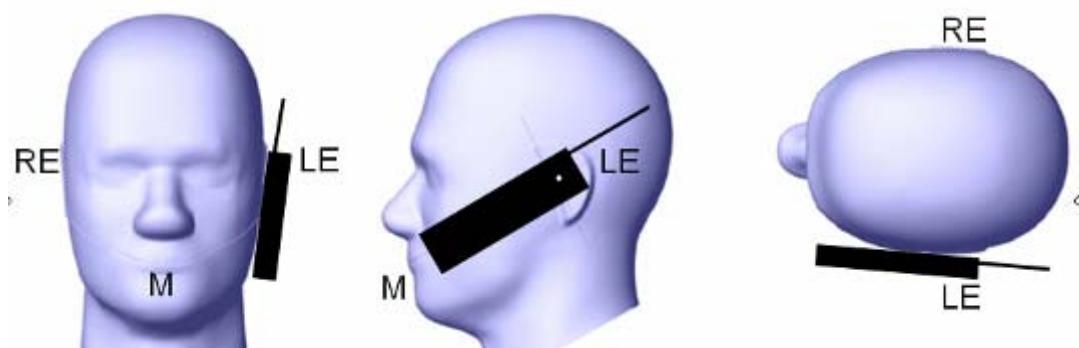
The device is brought toward the mouth of the head phantom by pivoting against the “ear reference point” or along the “N-F” line for the SCC-34/SC-2 head phantom.

This test position is established:

- When any point on the display, keypad or mouthpiece portions of the handset is in contact with the phantom.
- (or) When any portion of a foldout, sliding or similar keypad cover opened to its intended self-adjusting normal use position is in contact with the cheek or mouth of the phantom.

For existing head phantoms – when the handset loses contact with the phantom at the pivoting point, rotation should continue until the device touches the cheek of the phantom or breaks its last contact from the ear spacer.

Cheek /Touch Position



Ear/Tilt Position

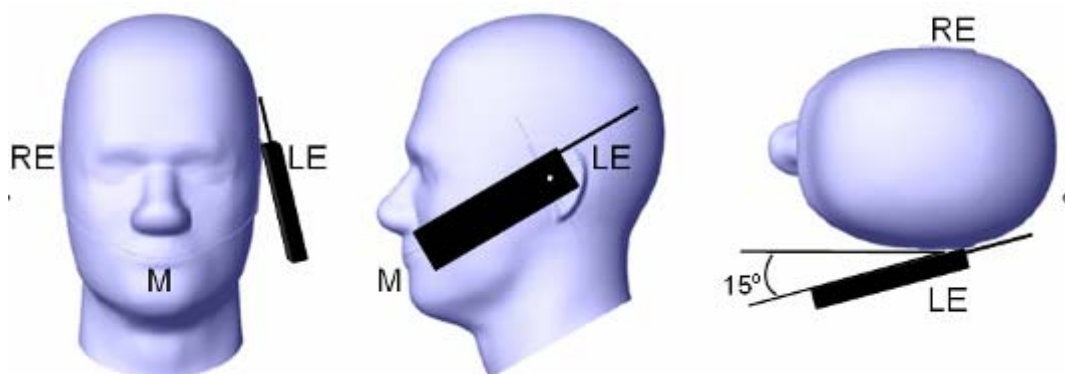
With the handset aligned in the “Cheek/Touch Position”:

1) If the earpiece of the handset is not in full contact with the phantom’s ear spacer (in the “Cheek/Touch position”) and the peak SAR location for the “Cheek/Touch” position is located at the ear spacer region or corresponds to the earpiece region of the handset, the device should be returned to the “initial ear position” by rotating it away from the mouth until the earpiece is in full contact with the ear spacer.

2) (otherwise) The handset should be moved (translated) away from the cheek perpendicular to the line passes through both “ear reference points” (note: one of these ear reference points may not physically exist on a split head model) for approximate 2-3 cm. While it is in this position, the device handset is tilted away from the mouth with respect to the “test device reference point” until the inside angle between the vertical centerline on the front surface of the phone and the horizontal line passing through the ear reference point is by 15° to 80°. After the tilt, it is then moved (translated) back toward the head perpendicular to the line passes through both “ear reference points” until the device touches the phantom or the ear spacer. If the antenna touches the head first, the positioning process should be repeated with a tilt angle less than 15° so that the device and its antenna would touch the phantom simultaneously. This test position may require a device holder or positioner to achieve the translation and tilting with acceptable positioning repeatability.

If a device is also designed to transmit with its keypad cover closed for operating in the head position, such positions should also be considered in the SAR evaluation. The device should be tested on the left and right side of the head phantom in the “Cheek/Touch” and “Ear/Tilt” positions. When applicable, each configuration should be tested with the antenna in its fully extended and fully retracted positions. These test configurations should be tested at the high, middle and low frequency channels of each operating mode; for example, AMPS, CDMA, and TDMA. If the SAR measured at the middle channel for each test configuration (left, right, Cheek/Touch, Tilt/Ear, extended and retracted) is at least 2.0 dB lower than the SAR limit, testing at the high and low channels is optional for such test configuration(s). If the transmission band of the test device is less than 10 MHz, testing at the high and low frequency channels is optional.

Ear /Tilt 15° Position



Test positions for body-worn and other configurations

Body-worn operating configurations should be tested with the belt-clips and holsters attached to the device and positioned against a flat phantom in normal use configurations. Devices with a headset output should be tested with a headset connected to the device. When multiple accessories that do not contain metallic components are supplied with the device, the device may be tested with only the accessory that dictates the closest spacing to the body. When multiple accessories that contain metallic components are supplied with the device, the device must be tested with each accessory that contains a unique metallic component. If multiple accessories share an identical metallic component (e.g., the same metallic belt-clip used with different holsters with no other metallic components), only the accessory that dictates the closest spacing to the body must be tested.

Body-worn accessories may not always be supplied or available as options for some devices that are intended to be authorized for body-worn use. A separation distance of 1.5 cm between the back of the device and a flat phantom is recommended for testing body-worn SAR compliance under such circumstances. Other separation distances may be used, but they should not exceed 2.5 cm. In these cases, the device may use body-worn accessories that provide a separation distance greater than that tested for the device provided however that the accessory contains no metallic components.

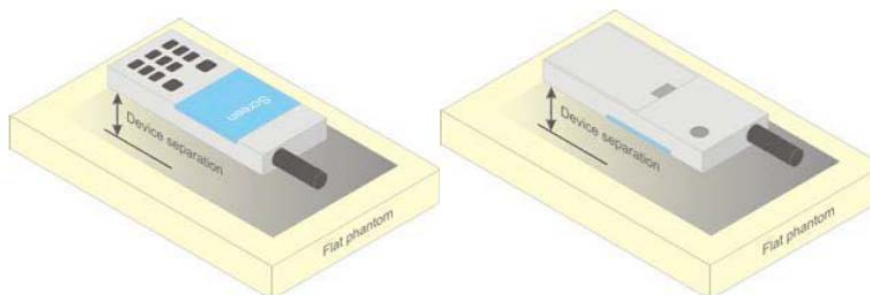


Figure 5 – Test positions for body-worn devices

SAR Evaluation Procedure

The evaluation was performed with the following procedure:

Step 1: Measurement of the SAR value at a fixed location above the ear point or central position was used as a reference value for assessing the power drop. The SAR at this point is measured at the start of the test and then again at the end of the testing.

Step 2: The SAR distribution at the exposed side of the head was measured at a distance of 4 mm from the inner surface of the shell. The area covered the entire dimension of the head or EUT and the horizontal grid spacing was 10 mm x 10 mm. Based on these data, the area of the maximum absorption was determined by spline interpolation. The first Area Scan covers the entire dimension of the EUT to ensure that the hotspot was correctly identified.

Step 3: Around this point, a volume of 35 mm x 35 mm x 35 mm was assessed by measuring 7x 7 x 7 points. On the basis of this data set, the spatial peak SAR value was evaluated under the following procedure:

- 1) The data at the surface were extrapolated, since the center of the dipoles is 1.2 mm away from the tip of the probe and the distance between the surface and the lowest measuring point is 1.3 mm. The extrapolation was based on a least square algorithm. A polynomial of the fourth order was calculated through the points in z-axes. This polynomial was then used to evaluate the points between the surface and the probe tip.
- 2) The maximum interpolated value was searched with a straightforward algorithm. Around this maximum the SAR values averaged over the spatial volumes (1 g or 10 g) were computed by the 3D-Spline interpolation algorithm. The 3D-Spline is composed of three one dimensional splines with the "Not a knot"-condition (in x, y and z-directions). The volume was integrated with the trapezoidal-algorithm. One thousand points (10 x 10 x 10) were interpolated to calculate the averages.

All neighboring volumes were evaluated until no neighboring volume with a higher average value was found.

Step 4: Re-measurement of the SAR value at the same location as in Step 1. If the value changed by more than 5%, the evaluation was repeated.

Test methodology

KDB447498 D01 General RF Exposure Guidance v05r02.
KDB 648474 D04 Handset SAR v01r02.
KDB 865664 D01 SAR measurement 100 MHz to 6 GHz v01r03
KDB 865664 D02 RF Exposure Reporting v01r01
KDB 941225 D01 3G SAR Procedures v03
KDB 941225 D06 Hotspot Mode v02

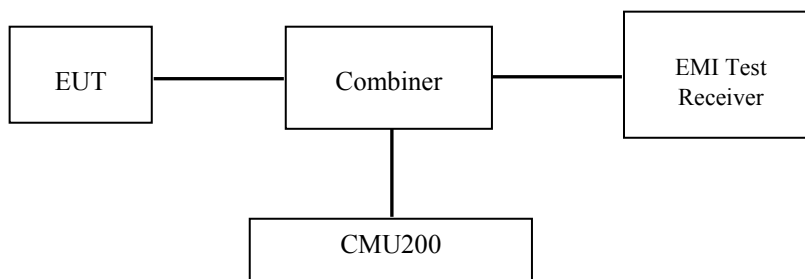
CONDUCTED OUTPUT POWER MEASUREMENT

Provision Applicable

The measured peak output power should be greater and within 5% than EMI measurement.

Test Procedure

The RF output of the transmitter was connected to the input of the EMI Test Receiver through sufficient attenuation.



GSM&3G

Maximum Output Power among production units

Max Target Power for Production Unit (dBm)			
Mode/Band	Channel		
	Low	Middle	High
GSM 850	31.40	31.40	31.40
GPRS 1 slot	31.40	31.40	31.40
GPRS 2 slot	30.60	30.60	30.60
GPRS 3 slot	29.00	29.00	29.00
GPRS 4 slot	27.90	27.90	27.90
EGPRS 1 slot	25.30	25.30	25.30
EGPRS 2 slot	23.80	23.80	23.80
EGPRS 3 slot	22.20	22.20	22.20
EGPRS 4 slot	21.60	21.60	21.60
PCS 1900	30.70	30.70	30.70
GPRS 1 slot	26.50	26.50	26.50
GPRS 2 slot	26.30	26.30	26.30
GPRS 3 slot	26.00	26.00	26.00
GPRS 4 slot	25.90	25.90	25.90
EGPRS 1 slot	26.00	26.00	26.00
EGPRS 2 slot	25.20	25.20	25.20
EGPRS 3 slot	23.10	23.10	23.10
EGPRS 4 slot	22.30	22.30	22.30
WCDMA850	21.90	21.90	21.90
Wi-Fi	13.50	13.50	13.50
Bluetooth	0.90	0.90	0.90

Test Results:**GSM:**

Band	Frequency (MHz)	Conducted Output Power	
		Meas. Power (dBm)	Meas. Power (W)
GSM 850	824.2	31.25	1.334
	836.6	31.33	1.358
	848.8	31.37	1.371
PCS 1900	1850.2	30.68	1.169
	1880.0	30.56	1.138
	1909.8	30.43	1.104

GPRS:

Band	Channel No.	Frequency (MHz)	RF Output Power (dBm)			
			1 slot	2 slot	3 slots	4 slots
GSM 850	128	824.2	31.14	30.48	28.85	27.79
	190	836.6	31.27	30.52	28.94	27.83
	251	848.8	31.32	30.59	28.95	27.88
PCS 1900	512	1850.2	26.26	26.13	25.96	25.75
	661	1880.0	26.31	26.15	25.99	25.78
	810	1909.8	26.43	26.25	25.97	25.80

EGPRS:

Band	Channel No.	Frequency (MHz)	RF Output Power (dBm)			
			1 slot	2 slot	3 slots	4 slots
GSM 850	128	824.2	25.21	23.77	22.16	21.58
	190	836.6	24.78	23.23	21.86	21.14
	251	848.8	24.37	23.02	21.38	21.04
PCS 1900	512	1850.2	25.97	25.14	23.08	22.21
	661	1880.0	25.45	24.11	22.89	21.98
	810	1909.8	24.98	23.43	22.45	21.72

For SAR, the time based average power is relevant, the difference in between depends on the duty cycle of the TDMA signal.

Number of Time slot	1	2	3	4
Duty Cycle	1:8	1:4	1:2.66	1:2
Time based Ave. power compared to slotted Ave. power	-9 dB	-6 dB	-4.25 dB	-3 dB
Crest Factor	8	4	2.66	2

The time based average power for GPRS

Band	Channel No.	Frequency (MHz)	Time based average Power (dBm)			
			1 slot	2 slot	3 slots	4 slots
GSM 850	128	824.2	22.14	24.48	24.60	24.79
	190	836.6	22.27	24.52	24.69	24.83
	251	848.8	22.32	24.59	24.70	24.88
PCS 1900	512	1850.2	17.26	20.13	21.71	22.75
	661	1880.0	17.31	20.15	21.74	22.78
	810	1909.8	17.43	20.25	21.72	22.80

The time based average power for EGPRS

Band	Channel No.	Frequency (MHz)	Time based average Power (dBm)			
			1 slot	2 slot	3 slots	4 slots
GSM 850	128	824.2	16.21	17.77	17.91	18.58
	190	836.6	15.78	17.23	17.61	18.14
	251	848.8	15.37	17.02	17.13	18.04
PCS 1900	512	1850.2	16.97	19.14	18.83	19.21
	661	1880.0	16.45	18.11	18.64	18.98
	810	1909.8	15.98	17.43	18.20	18.72

Note:

1. Rohde & Schwarz Radio Communication Tester (CMU200) was used for the measurement of GSM peak and average output power for active timeslots.
2. For GSM voice, 1 timeslot has been activated with power level 5 (850 MHz band) and 0 (1900 MHz band).
3. For GPRS, 1, 2, 3 and 4 timeslots has been activated separately with power level 3(850 MHz band) and 3(1900 MHz band).
4. According to KDB941225D06-SAR for GPRS and EDGE modes are not required when the source-based time-averaged output power for each data mode is lower than that in the normal GSM voice mode

WCDMA-Release 99:

The following tests were conducted according to the test requirements outlines in section 5.2 of the 3GPP TS34.121-1 specification. The EUT has a nominal maximum output power of 24dBm (+1.7/-3.7).

WCDMA General Settings	Loopback Mode	Test Mode 1
	Rel99 RMC	12.2kbps RMC
	Power Control Algorithm	Algorithm2
	β_c / β_d	8/15

WCDMA HSDPA

The following tests were conducted according to the test requirements outlines in section 5.2 of the 3GPP TS34.121-1 specification.

	Mode	HSDPA	HSDPA	HSDPA	HSDPA
	Subset	1	2	3	4
WCDMA General Settings	Loopback Mode	Test Mode 1			
	Rel99 RMC	12.2kbps RMC			
	HSDPA FRC	H-Set1			
	Power Control Algorithm	Algorithm2			
	β_c	2/15	12/15	15/15	15/15
	β_d	15/15	15/15	8/15	4/15
	β_d (SF)	64			
	β_c / β_d	2/15	12/15	15/8	15/4
	β_{hs}	4/15	24/15	30/15	30/15
	MPR(dB)	0	0	0.5	0.5
HSDPA Specific Settings	D_{ACK}	8			
	D_{NAK}	8			
	D_{CQI}	8			
	Ack-Nack repetition factor	3			
	CQI Feedback	4ms			
	CQI Repetition Factor	2			
	$A_{hs} = \beta_{hs} / \beta_c$	30/15			

WCDMA HSUPA

The following tests were conducted according to the test requirements outlines in section 5.2 of the 3GPP TS34.121-1 specification.

	Mode	HSUPA	HSUPA	HSUPA	HSUPA	HSUPA
	Subset	1	2	3	4	5
WCDMA General Settings	Loopback Mode	Test Mode 1				
	Rel99 RMC	12.2kbps RMC				
	HSDPA FRC	H-Set1				
	HSUPA Test	HSUPA Loopback				
	Power Control Algorithm	Algorithm2				
	β_c	11/15	6/15	15/15	2/15	15/15
	β_d	15/15	15/15	9/15	15/15	0
	β_{ec}	209/225	12/15	30/15	2/15	5/15
	β_c/β_d	11/15	6/15	15/9	2/15	-
	β_{hs}	22/15	12/15	30/15	4/15	5/15
	CM(dB)	1.0	3.0	2.0	3.0	1.0
	MPR(dB)	0	2	1	2	0
HSDPA Specific Settings	DACK	8				
	DNAK	8				
	DCQI	8				
	Ack-Nack repetition factor	3				
	CQI Feedback	4ms				
	CQI Repetition Factor	2				
	A _{hs} = β_{hs}/β_c	30/15				
HSUPA Specific Settings	DE-DPCCH	6	8	8	5	7
	DHARQ	0	0	0	0	0
	AG Index	20	12	15	17	21
	ETFCI	75	67	92	71	81
	Associated Max UL Data Rate kbps	242.1	174.9	482.8	205.8	308.9
	Reference E_FCI _s	E-TFCI 11 E E-TFCI PO 4 E-TFCI 67 E-TFCI PO 18 E-TFCI 71 E-TFCI PO23 E-TFCI 75 E-TFCI PO26 E-TFCI 81 E-TFCI PO 27	E-TFCI 11 E-TFCI PO4 E-TFCI 92 E-TFCI PO 18	E-TFCI 11 E E-TFCI PO 4 E-TFCI 67 E-TFCI PO 18 E-TFCI 71 E-TFCI PO23 E-TFCI 75 E-TFCI PO26 E-TFCI 81 E-TFCI PO 27		

Results (12.2kbps RMC)

Band	Frequency (MHz)	Channel NO.	Conducted Output Power	
			(dBm)	(Watt)
WCDMA 850	826.4	4132	21.82	0.152
	836.6	4183	21.27	0.134
	846.6	4233	21.80	0.151

Results (HSDPA)

Band	Frequency (MHz)	Channel NO.	Conducted Output Power (dBm)			
			Subset 1	Subset 2	Subset 3	Subset 4
WCDMA 850	826.4	4132	20.75	20.87	20.98	20.82
	836.6	4183	20.30	20.26	20.41	20.34
	846.6	4233	20.77	20.80	20.64	20.53

Results (HSUPA)

Band	Frequency (MHz)	Channel NO.	Conducted Output Power (dBm)				
			Subset 1	Subset 2	Subset 3	Subset 4	Subset 5
WCDMA 850	826.4	4132	20.81	20.73	20.65	20.95	20.78
	836.6	4183	20.28	20.17	20.14	20.26	20.36
	846.6	4233	20.73	20.68	20.42	20.83	20.58

Note:

1. The default test configuration is to measure SAR with an established radio link between the EUT and a communication test set using a 12.2 kbps RMC (reference measurement Channel) Configured in Test Loop Model 1.
2. KDB 941225 D01-Body SAR is not required for HSDPA when the maximum average output of each RF channel with HSDPA active is less than ¼ dB higher than measured without HSDPA using 12.2kbps RMC or the maximum SAR for 12.2kbps RMC is < 75% of SAR limit.
3. KDB 941225 D01-Body SAR is not required for HSUPA when the maximum average output of each RF channel with HSUPA active is less than ¼ dB higher than measured without HSUPA using 12.2kbps RMC and the maximum SAR for 12.2kbps RMC is < 75% of SAR limit.

Bluetooth

Mode	Channel frequency (MHz)	Conducted Output Power	
		(dBm)	(mw)
BDR(GFSK)	(Low)2402	-0.15	0.966
	(Middle)2441	0.32	1.076
	(High)2480	0.84	1.213
EDR(4-DQPSK)	(Low)2402	-0.94	0.805
	(Middle)2441	-0.50	0.891
	(High)2480	-0.29	0.935
EDR-8DPSK	(Low)2402	-0.96	0.802
	(Middle)2441	-0.37	0.918
	(High)2480	-0.16	0.964
BLE	(Low)2402	-7.52	0.177
	(Middle)2440	-7.93	0.161
	(High)2480	-8.20	0.151

Wi-Fi

Band	Frequency (MHz)	Conducted Output Power	
		(dBm)	(mw)
802.11b	2412	13.46	22.182
	2437	12.97	19.815
	2462	12.69	18.578
802.11g	2412	12.38	17.298
	2437	11.04	12.706
	2462	11.89	15.453
802.11n HT20	2412	9.80	9.550
	2437	9.55	9.016
	2462	9.47	8.851
802.11n HT40	2422	8.15	6.531
	2437	8.04	6.368
	2452	8.26	6.699

Note:

1. The output power was tested under data rate 1Mbps for 802.11b, 6Mbps for 802.11g, 6.5Mbps for 802.11n HT20, 13.5Mbps for 802.11n HT40.

SAR MEASUREMENT RESULTS

This page summarizes the results of the performed dosimetric evaluation.

SAR Test Data

Environmental Conditions

Temperature:	21-24 °C
Relative Humidity:	50-53 %
ATM Pressure:	1001-1002 mbar

Testing was performed by Wilson Chen on 2015-03-28

GSM 850:

EUT Position	Frequency (MHz)	Test Mode	Power Drift (%)	Max. Meas. Power (dBm)	Max. Rated Power (dBm)	1g SAR (W/Kg)			
						Scaled Factor	Meas. SAR	Scaled SAR	Plot
Left Head Cheek	824.2	GSM	-2.275	31.25	31.40	1.035	0.439	0.454	/
	836.6	GSM	0.971	31.33	31.40	1.016	0.475	0.483	/
	848.8	GSM	0.816	31.37	31.40	1.007	0.517	0.521	1#
Left Head Tilt	824.2	GSM	/	/	/	/	/	/	/
	836.6	GSM	2.254	31.33	31.40	1.016	0.383	0.389	
	848.8	GSM	/	/	/	/	/	/	/
Right Head Cheek	824.2	GSM	/	/	/	/	/	/	/
	836.6	GSM	-0.863	31.33	31.40	1.016	0.443	0.450	/
	848.8	GSM	/	/	/	/	/	/	
Right Head Tilt	824.2	GSM	/	/	/	/	/	/	/
	836.6	GSM	-2.352	31.33	31.40	1.016	0.355	0.361	/
	848.8	GSM	/	/	/	/	/	/	/
Body-Back-Headset (10mm)	824.2	GSM	/	/	/	/	/	/	/
	836.6	GSM	2.059	31.33	31.40	1.016	0.677	0.688	/
	848.8	GSM	/	/	/	/	/	/	/

PCS Band:

EUT Position	Frequency (MHz)	Test Mode	Power Drift (%)	Max. Meas. Power (dBm)	Max. Rated Power (dBm)	1g SAR (W/Kg)			
						Scaled Factor	Meas. SAR	Scaled SAR	Plot
Left Head Cheek	1850.2	GSM	-0.877	30.68	30.70	1.005	0.307	0.309	2#
	1880.0	GSM	0.950	30.56	30.70	1.033	0.293	0.303	/
	1909.8	GSM	-3.133	30.43	30.70	1.064	0.278	0.296	/
Left Head Tilt	1850.2	GSM	/	/	/	/	/	/	/
	1880.0	GSM	-1.914	30.56	30.70	1.033	0.195	0.201	/
	1909.8	GSM	/	/	/	/	/	/	/
Right Head Cheek	1850.2	GSM	/	/	/	/	/	/	/
	1880.0	GSM	3.452	30.56	30.70	1.033	0.282	0.291	
	1909.8	GSM	/	/	/	/	/	/	/
Right Head Tilt	1850.2	GSM	/	/	/	/	/	/	/
	1880.0	GSM	0.887	30.56	30.70	1.033	0.203	0.210	/
	1909.8	GSM	/	/	/	/	/	/	/
Body-Back-Headset (10mm)	1850.2	GSM	/	/	/	/	/	/	/
	1880.0	GSM	-1.475	30.56	30.70	1.033	0.172	0.178	/
	1909.8	GSM	/	/	/	/	/	/	/

Note:

1. When the 1-g SAR is $\leq 0.8\text{W/Kg}$, testing for other channels are optional.
2. The EUT transmit and receive through the same GSM antenna while testing SAR.
3. When SAR or MPE is not measured at the maximum power level allowed for production units, the results must be scaled to the maximum tune-up tolerance limit according to the power applied to the individual channels tested to determine compliance.
4. When the maximum output power variation across the required test channels is $> \frac{1}{2}$ dB, instead of the middle channel, the highest output power channel must be used.
5. KDB648474D04—SAR test separation distance keep the same for both voice and data to support hotspot mode, i.e.10 mm.

WCDMA 850

EUT Position	Frequency (MHz)	Test Mode	Power Drift (%)	Max. Meas. Power (dBm)	Max. Rated Power (dBm)	1g SAR (W/Kg)			
						Scaled Factor	Meas. SAR	Scaled SAR	Plot
Left Head Cheek	826.4	WCDMA 850	-2.512	21.82	21.90	1.019	0.229	0.233	3#
	836.6	WCDMA 850	/	/	/	/	/	/	/
	846.6	WCDMA 850	/	/	/	/	/	/	/
Left Head Tilt	826.4	WCDMA 850	1.299	21.82	21.90	1.019	0.162	0.165	/
	836.6	WCDMA 850	/	/	/	/	/	/	/
	846.6	WCDMA 850	/	/	/	/	/	/	/
Right Head Cheek	826.4	WCDMA 850	1.886	21.82	21.90	1.019	0.219	0.223	/
	836.6	WCDMA 850	/	/	/	/	/	/	/
	846.6	WCDMA 850	/	/	/	/	/	/	/
Right Head Tilt	826.4	WCDMA 850	-2.463	21.82	21.90	1.019	0.156	0.159	/
	836.6	WCDMA 850	/	/	/	/	/	/	/
	846.6	WCDMA 850	/	/	/	/	/	/	/

Note:

1. When the 1-g SAR is $\leq 0.8\text{W/Kg}$, testing for other channels are optional.
2. The default test configuration is to measure SAR with an established radio link between the EUT and a communication test set using a 12.2 kbps RMC (reference measurement Channel) Configured in Test Loop Model.
5. When SAR or MPE is not measured at the maximum power level allowed for production units, the results must be scaled to the maximum tune-up tolerance limit according to the power applied to the individual channels tested to determine compliance.

Wi-Fi 802.11b

EUT Position	Frequency (MHz)	Power Drift (%)	Meas. Avg. Power (dBm)	Max. Rated Avg. Power (dBm)	1 g SAR Value (W/Kg)			
					Scaled Factor	Meas. SAR	Scaled SAR	Plot
Left Head Cheek	2412	1.803	13.46	13.50	1.009	0.117	0.118	/
	2437	/	/	/	/	/	/	/
	2462	/	/	/	/	/	/	/
Left Head Tilt	2412	1.794	13.46	13.50	1.009	0.103	0.104	/
	2437	/	/	/	/	/	/	/
	2462	/	/	/	/	/	/	/
Right Head Cheek	2412	-2.432	13.46	13.50	1.009	0.125	0.126	4#
	2437	/	/	/	/	/	/	/
	2462	/	/	/	/	/	/	/
Right Head Tilt	2412	3.406	13.46	13.50	1.009	0.096	0.097	/
	2437	/	/	/	/	/	/	/
	2462	/	/	/	/	/	/	/

Note:

1. When the 1-g SAR is $\leq 0.8\text{W/Kg}$, testing for other channel is optional.

2. When SAR or MPE is not measured at the maximum power level allowed for production units, the results must be scaled to the maximum tune-up tolerance limit according to the power applied to the individual channels tested to determine compliance.
3. KDB248227-SAR is not required for 802.11g channels when the maximum average output power is less than 1/4 dB higher than that measured on the corresponding 802.11b channels.

Mobile Hot-Spot Test Result

The DUT is capable of functioning as a Wi-Fi to Cellular Mobile hotspot. Additional SAR testing was performed according to KDB 941225 D06. Testing was performed with a separation of 1cm between the DUT and the flat phantom. The DUT was positioned for SAR tests with the back surfaces facing the phantom, and also with the edges facing the phantom in which the transmitting antenna is <2.5 cm from the edge. Each transmit band was utilized for SAR testing. The tested mode has been selected within each band that exhibits the highest time average output power.

Hot spot-GPRS (Frequency Band: 835)

EUT Position	Frequency (MHz)	Test Mode	Power Drift (%)	Max. Meas. Power (dBm)	Max. Rated Power (dBm)	1g SAR (W/Kg)			Plot
						Scaled Factor	Meas. SAR	Scaled SAR	
Body-Back (10mm)	824.2	GPRS	1.464	27.79	27.90	1.026	0.935	0.959	/
	836.6	GPRS	-1.133	27.83	27.90	1.016	0.986	1.002	/
	848.8	GPRS	2.134	27.88	27.90	1.005	1.150	1.155	5#
Body-Left (10mm)	824.2	GPRS	/	/	/	/	/	/	/
	836.6	GPRS	/	/	/	/	/	/	/
	848.8	GPRS	2.122	27.88	27.90	1.005	0.536	0.539	
Body-Right (10mm)	824.2	GPRS	/	/	/	/	/	/	/
	836.6	GPRS	/	/	/	/	/	/	/
	848.8	GPRS	-1.722	27.88	27.90	1.005	0.158	0.159	
Body-Top (10mm)	824.2	GPRS	/	/	/	/	/	/	/
	836.6	GPRS	/	/	/	/	/	/	/
	848.8	GPRS	-3.428	27.88	27.90	1.005	0.313	0.315	/

Hot spot-GPRS (Frequency Band: 1900)

EUT Position	Frequency (MHz)	Test Mode	Power Drift (%)	Max. Meas. Power (dBm)	Max. Rated Power (dBm)	1g SAR (W/Kg)			Plot
						Scaled Factor	Meas. SAR	Scaled SAR	
Body-Back (10mm)	1850.2	GPRS	/	/	/	/	/	/	/
	1880.0	GPRS	/	/	/	/	/	/	/
	1909.8	GPRS	-1.623	25.80	25.90	1.023	0.361	0.369	6#
Body-Left (10mm)	1850.2	GPRS	/	/	/	/	/	/	/
	1880.0	GPRS	/	/	/	/	/	/	/
	1909.8	GPRS	-3.334	25.80	25.90	1.023	0.189	0.193	/
Body-Right (10mm)	1850.2	GPRS	/	/	/	/	/	/	
	1880.0	GPRS	/	/	/	/	/	/	
	1909.8	GPRS	1.030	25.80	25.90	1.023	0.076	0.078	
Body-Top (10mm)	1850.2	GPRS	/	/	/	/	/	/	/
	1880.0	GPRS	/	/	/	/	/	/	/
	1909.8	GPRS	2.764	25.80	25.90	1.023	0.317	0.324	/

Hot Spot-WCDMA850

EUT Position	Frequency (MHz)	Test Mode	Power Drift (%)	Max. Meas. Power (dBm)	Max. Rated Power (dBm)	1g SAR (W/Kg)			
						Scaled Factor	Meas. SAR	Scaled SAR	Plot
Body-Back (10mm)	826.4	WCDMA850	-1.253	21.82	21.90	1.019	0.322	0.328	7#
	836.6	WCDMA850	/	/	/	/	/	/	/
	846.6	WCDMA850	/	/	/	/	/	/	/
Body-Left (10mm)	826.4	WCDMA850	-1.832	21.82	21.90	1.019	0.232	0.236	/
	836.6	WCDMA850	/	/	/	/	/	/	/
	846.6	WCDMA850	/	/	/	/	/	/	/
Body-Right (10mm)	826.4	WCDMA850	3.166	21.82	21.90	1.019	0.105	0.107	/
	836.6	WCDMA850	/	/	/	/	/	/	/
	846.6	WCDMA850	/	/	/	/	/	/	/
Body-Top (10mm)	826.4	WCDMA850	-3.324	21.82	21.90	1.019	0.176	0.179	/
	836.6	WCDMA850	/	/	/	/	/	/	/
	846.6	WCDMA850	/	/	/	/	/	/	/

Note:

1. When the 1-g SAR is $\leq 0.8\text{W/Kg}$, testing for other channels are optional.
2. For GPRS mode: the Multi-slot Classes of EUT is Class12 which has maximum 4 Downlink slots and 4 Uplink slots, the maximum active slots is 5, when perform the multiple slots scan, 1DL+4UL is the worst case.
3. For WCDMA mode: the default test configuration is to measure SAR with an established radio link between the EUT and a communication test set using a 12.2 kbps RMC (reference measurement Channel) Configured in Test Loop Model.
4. When SAR or MPE is not measured at the maximum power level allowed for production units, the results must be scaled to the maximum tune-up tolerance limit according to the power applied to the individual channels tested to determine compliance.

Wi-Fi 802.11b (2412-2462MHz)

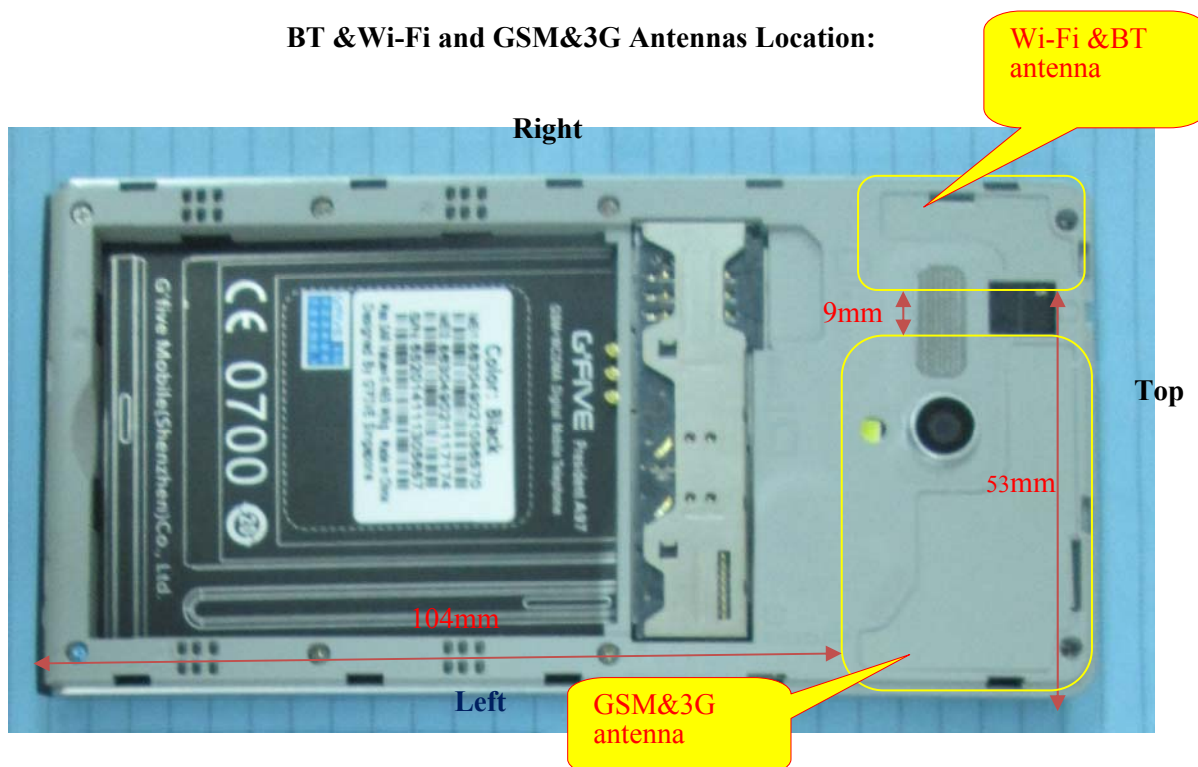
EUT Position	Frequency (MHz)	Power Drift (%)	Meas. Avg. Power (dBm)	Max. Rated Avg. Power (dBm)	1 g SAR Value (W/Kg)			
					Scaled Factor	Meas. SAR	Scaled SAR	Plot
Body-worn-Back (10mm)	2412	-2.432	13.46	13.50	1.009	0.125	0.126	8#
	2437	/	/	/	/	/	/	/
	2462	/	/	/	/	/	/	/
Body-worn-Right (10mm)	2412	1.694	13.46	13.50	1.009	0.073	0.073	/
	2437	/	/	/	/	/	/	/
	2462	/	/	/	/	/	/	/
Body-worn-Top (10mm)	2412	1.251	13.46	13.50	1.009	0.106	0.107	/
	2437	/	/	/	/	/	/	/
	2462	/	/	/	/	/	/	/

Note:

1. When the 1-g SAR is $\leq 0.8\text{W/Kg}$, testing for other channel is optional.

SAR SIMULTANEOUS TRANSMISSION DESCRIPTION

BT & Wi-Fi and GSM&3G Antennas Location:



Simultaneous Transmission:

Description of Simultaneous Transmit Capabilities			Antennas Distance (mm)
Transmitter Combination	Simultaneous?	Hotspot?	
GSM + WCDMA	×	×	0
GSM + Bluetooth	√	×	9
GSM + Wi-Fi	√	×	9
GPRS + WCDMA	×	×	0
GPRS + Bluetooth	√	×	9
GPRS + Wi-Fi	√	√	9
WCDMA + Bluetooth	√	×	9
WCDMA + Wi-Fi	√	√	9

Standalone SAR test exclusion considerations

Head Position:

Mode	P _{avg} (dBm)	P _{avg} (mW)	Distance (mm)	Calculated value	Threshold (1-g)	SAR Test Exclusion
GSM850	22.40	173.78	0	32.04	3.0	No
PCS1900	21.70	147.91	0	40.78	3.0	No
WCDMA850	21.90	154.88	0	28.56	3.0	No
Wi-Fi	13.50	22.39	0	7.00	3.0	No
Bluetooth	0.90	1.23	0	0.38	3.0	Yes

Body Position:

Mode	P _{avg} (dBm)	P _{avg} (mW)	Distance (mm)	Calculated value	Threshold (1-g)	SAR Test Exclusion
GPRS850	24.90	309.03	10.00	28.49	3.0	No
GPRS1900	22.90	194.98	10.00	26.88	3.0	No
WCDMA850	21.90	154.88	10.00	14.28	3.0	No
Wi-Fi	13.50	22.39	10.00	3.50	3.0	No
Bluetooth	0.90	1.23	10.00	0.19	3.0	Yes

The 1-g and 10-g SAR test exclusion thresholds for 100 MHz to 6 GHz at *test separation distances* ≤ 50 mm are determined by:

$[(\text{max. power of channel, including tune-up tolerance, mW})/(\text{min. test separation distance, mm})] \cdot [\sqrt{f(\text{GHz})}] \leq 3.0$ for 1-g SAR and ≤ 7.5 for 10-g extremity SAR, where

1. $f(\text{GHz})$ is the RF channel transmit frequency in GHz.
2. Power and distance are rounded to the nearest mW and mm before calculation.
3. The result is rounded to one decimal place for comparison.
4. When the minimum test separation distance is < 5 mm, a distance of 5 mm is applied to determine SAR test Exclusion.

Standalone SAR estimation:

Mode	Frequency (GHz)	Distance (mm)	P _{avg} (dBm)	P _{avg} (mW)	Estimated 1-g (W/kg)
BT Head	2.45	0	0.90	1.23	0.051
BT Body	2.45	10	0.90	1.23	0.026

When standalone SAR test exclusion applies to an antenna that transmits simultaneously with other antennas, the standalone SAR must be estimated according to following to determine simultaneous transmission SAR test exclusion:

$[(\text{max. power of channel, including tune-up tolerance, mW})/(\text{min. test separation distance, mm})] \cdot [\sqrt{f(\text{GHz})/x}] \text{ W/kg}$ for *test separation distances* ≤ 50 mm;

where $x = 7.5$ for 1-g SAR.

When the minimum test separation distance is < 5 mm, a distance of 5 mm is applied to determine SAR test Exclusion

Simultaneous SAR test exclusion considerations:**GSM with BT:**

Mode	Position	Reported SAR (W/kg)		ΣSAR
		GSM	BT	< 1.6W/kg
GSM850	Left Head Cheek	0.521	0.051	0.572
	Left Head Tilt	0.389	0.051	0.440
	Right Head Cheek	0.450	0.051	0.501
	Right Head Tilt	0.361	0.051	0.412
	Body–Headset-Back	0.688	0.026	0.714
PCS1900	Left Head Cheek	0.309	0.051	0.360
	Left Head Tilt	0.201	0.051	0.252
	Right Head Cheek	0.291	0.051	0.342
	Right Head Tilt	0.210	0.051	0.261
	Body–Headset-Back	0.178	0.026	0.204

WCDMA with BT:

Mode	Position	Reported SAR (W/kg)		ΣSAR
		WCDMA	BT	< 1.6W/kg
WCDMA 850	Left Head Cheek	0.233	0.051	0.284
	Left Head Tilt	0.165	0.051	0.216
	Right Head Cheek	0.223	0.051	0.274
	Right Head Tilt	0.159	0.051	0.210

GSM with Wi-Fi:

Mode	Position	Reported SAR (W/kg)		ΣSAR
		GSM	Wi-Fi	< 1.6W/kg
GSM850	Left Head Cheek	0.521	0.118	0.639
	Left Head Tilt	0.389	0.104	0.493
	Right Head Cheek	0.450	0.126	0.576
	Right Head Tilt	0.361	0.097	0.458
	Body–Headset-Back	0.688	0.126	0.814
PCS1900	Left Head Cheek	0.309	0.118	0.427
	Left Head Tilt	0.201	0.104	0.305
	Right Head Cheek	0.291	0.126	0.417
	Right Head Tilt	0.210	0.097	0.307
	Body–Headset-Back	0.178	0.126	0.304

WCDMA with Wi-Fi:

Mode	Position	Reported SAR (W/kg)		ΣSAR
		WCDMA	Wi-Fi	< 1.6W/kg
WCDMA 850	Left Head Cheek	0.233	0.118	0.351
	Left Head Tilt	0.165	0.104	0.269
	Right Head Cheek	0.223	0.126	0.349
	Right Head Tilt	0.159	0.097	0.256

Evaluations for Simultaneous SAR, BT+GSM/3G					
Test Position	Body-Back (1.0cm)	Body-Left (1.0cm)	Body-Right (1.0cm)	Body-Bottom (1.0cm)	Body-Top (1.0cm)
Mode	Stand Alone 1-g SAR (W/Kg)				
GPRS 850	1.155	0.539	0.159	/	0.315
GPRS 1900	0.369	0.193	0.078	/	0.324
WCDMA850	0.328	0.236	0.107	/	0.179
BT	0.026	0.026	0.026	0.026	0.026
	Σ 1-g SAR(W/Kg)				
GPRS850 + BT	1.181	0.565	0.185	/	0.341
GPRS1900 + BT	0.395	0.219	0.104	/	0.350
WCDMA850 + BT	0.354	0.262	0.133	/	0.205
Evaluations for Simultaneous SAR, Mobile Hot Spot Positions					
Test Position	Body-Back (1.0cm)	Body-Left (1.0cm)	Body-Right (1.0cm)	Body-Bottom (1.0cm)	Body-Top (1.0cm)
Mode	Stand Alone 1-g SAR (W/Kg)				
GPRS 850	1.155	0.539	0.159	/	0.315
GPRS 1900	0.369	0.193	0.078	/	0.324
WCDMA850	0.328	0.236	0.107	/	0.179
Wi-Fi	0.126	/	0.073	/	0.107
	Σ 1-g SAR(W/Kg)				
GPRS850 + Wi-Fi	1.281	/	0.232	/	0.422
GPRS1900 + Wi-Fi	0.495	/	0.151	/	0.431
WCDMA850 + Wi-Fi	0.454	/	0.180	/	0.286

Note:

If the sum of the 1g SAR measured for the simultaneously transmitting antennas is less than the SAR limit, SAR measurement for simultaneous transmission is not required.

SAR Plots (Summary of the Highest SAR Values)**Test Laboratory: Bay Area Compliance Lab Corp. (Shenzhen)****Left Head Cheek (848.8 MHz High Channel)**

Measurement Data

Test mode : GSM
Crest Factor : 8
Scan Type : Complete
Area Scan : 10x13x1: Measurement x=10mm, y=10mm, z=4mm
Zoom Scan : 7x7x7: Measurement x=5mm, y=5mm, z=5mm
Power Drift-Start : 0.385 W/kg
Power Drift-Finish : 0.388 W/kg
Power Drift (%) : 0.816

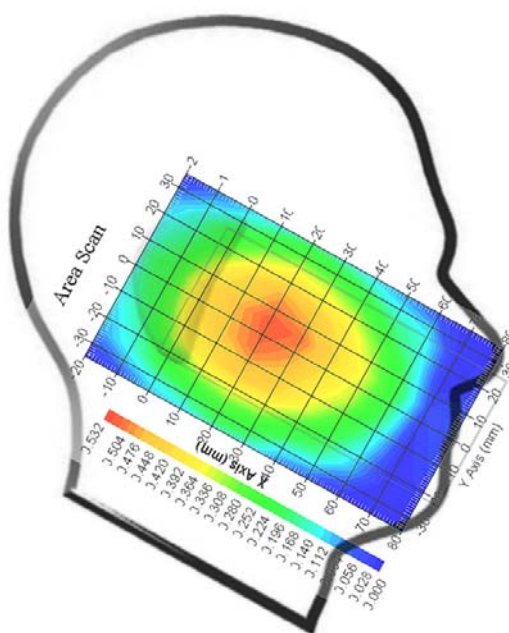
Tissue Data

Type : Head
Frequency : 848.8 MHz
Epsilon : 41.02 F/m
Sigma : 0.91 S/m
Density : 1000.00 kg/cu. m

Probe Data

Serial No. : 500-00283
Frequency Band : 835
Duty Cycle Factor : 8
Conversion Factor : 5.9
Probe Sensitivity : 1.20 1.20 1.20 $\mu\text{V}/(\text{V/m})^2$
Compression Point : 95.00 mV
Offset : 1.56 mm

1 gram SAR value : 0.517 W/kg
10 gram SAR value : 0.392 W/kg
Area Scan Peak SAR : 0.530 W/kg
Zoom Scan Peak SAR : 0.826 W/kg

Plot 1#

Test Laboratory: Bay Area Compliance Lab Corp. (Shenzhen)**Left Head Cheek(1850.2 MHz Low Channel)**

Measurement Data

Test mode : GSM
Crest Factor : 8
Scan Type : Complete
Area Scan : 11x8x1 : Measurement x=10mm, y=10mm, z=4mm
Zoom Scan : 7x7x7 : Measurement x=5mm, y=5mm, z=5mm
Power Drift-Start : 0.122 W/kg
Power Drift-Finish : 0.121 W/kg
Power Drift (%) : -0.877

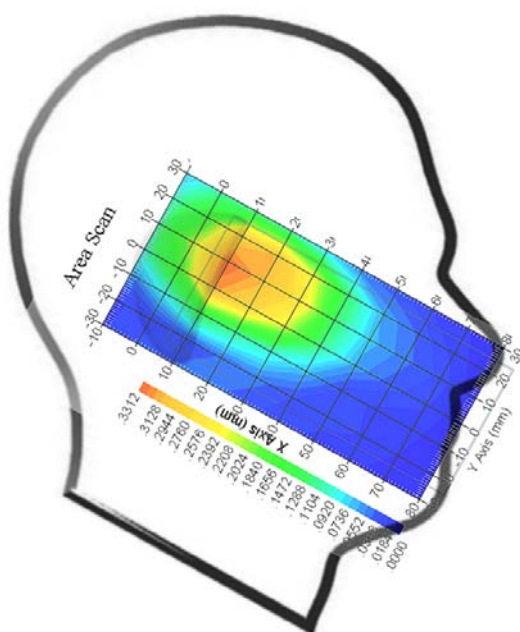
Tissue Data

Type : Head
Frequency : 1850.2 MHz
Epsilon : 39.57 F/m
Sigma : 1.36 S/m
Density : 1000.00 kg/cu. M

Probe Data

Serial No. : 500-00283
Frequency Band : 1900
Duty Cycle Factor : 8
Conversion Factor : 4.8
Probe Sensitivity : 1.20 1.20 1.20 $\mu\text{V}/(\text{V/m})^2$
Compression Point : 95.00 mV
Offset : 1.56 mm

1 gram SAR value : 0.307 W/kg
10 gram SAR value : 0.157 W/kg
Area Scan Peak SAR : 0.328 W/kg
Zoom Scan Peak SAR : 0.473 W/kg

Plot 2#

Test Laboratory: Bay Area Compliance Lab Corp. (Shenzhen)**WCDMA850; Left Head Cheek (826.4 MHz Low Channel)****Measurement Data**

Test mode : WCDMA850
Crest Factor : 1
Scan Type : Complete
Area Scan : 11x8x1: Measurement x=10mm, y=10mm, z=4mm
Zoom Scan : 7x7x7: Measurement x=5mm, y=5mm, z=5mm
Power Drift-Start : 0.128 W/kg
Power Drift-Finish : 0.125 W/kg
Power Drift (%) : -2.512

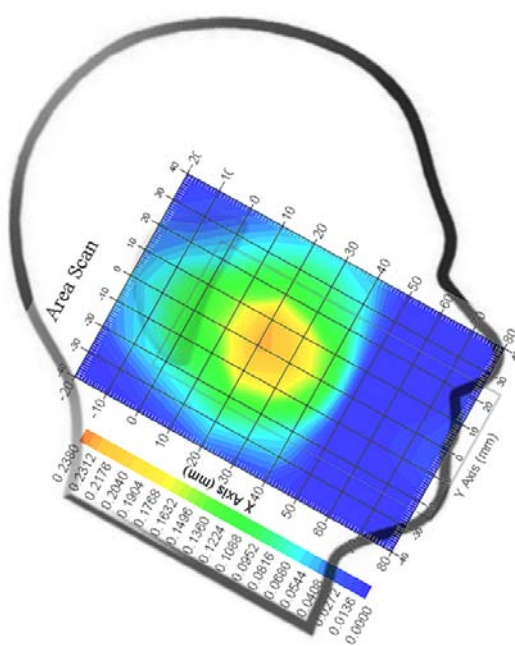
Tissue Data

Type : Head
Frequency : 826.4 MHz
Epsilon : 41.04 F/m
Sigma : 0.91 S/m
Density : 1000.00 kg/cu. m

Probe Data

Serial No. : 500-00283
Frequency Band : 835
Duty Cycle Factor : 1
Conversion Factor : 5.9
Probe Sensitivity : 1.20 1.20 1.20 $\mu\text{V}/(\text{V/m})^2$
Compression Point : 95.00 mV
Offset : 1.56 mm

1 gram SAR value : 0.229 W/kg
10 gram SAR value : 0.123 W/kg
Area Scan Peak SAR : 0.231 W/kg
Zoom Scan Peak SAR : 0.346 W/kg

Plot 3#

Test Laboratory: Bay Area Compliance Lab Corp. (Shenzhen)**802.11b; Right Head Cheek (2412 MHz Channel 1)****Measurement Data**

Test mode : 802.11b
Crest Factor : 1
Scan Type : Complete
Area Scan : 11x9x1: Measurement x=10mm, y=10mm, z=4mm
Zoom Scan : 7x7x7: Measurement x=5mm, y=5mm, z=5mm
Power Drift-Start : 0.172 W/kg
Power Drift-Finish : 0.175 W/kg
Power Drift (%) : 1.736

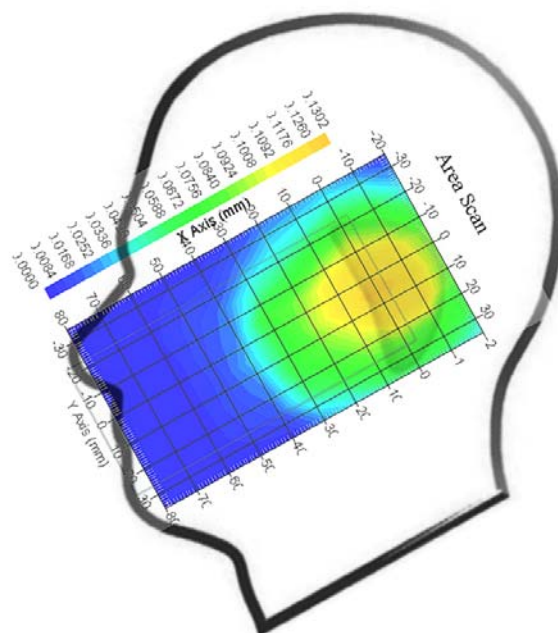
Tissue Data

Type : Head
Frequency : 2412 MHz
Epsilon : 39.83 F/m
Sigma : 1.81 S/m
Density : 1000.00 kg/cu. m

Probe Data

Serial No. : 500-00283
Frequency Band : 2450
Duty Cycle Factor : 1
Conversion Factor : 4.9
Probe Sensitivity : 1.20 1.20 1.20 $\mu\text{V}/(\text{V/m})^2$
Compression Point : 95.00 mV
Offset : 1.56 mm

1 gram SAR value : 0.125 W/kg
10 gram SAR value : 0.094 W/kg
Area Scan Peak SAR : 0.129 W/kg
Zoom Scan Peak SAR : 0.225 W/kg

Plot 4#

Test Laboratory: Bay Area Compliance Lab Corp. (Shenzhen)**Body-worn-Back (848.8 MHz High Channel)**

Measurement Data

Test mode : GPRS
Crest Factor : 2
Scan Type : Complete
Area Scan : 8x11x1 : Measurement x=10mm, y=10mm, z=4mm
Zoom Scan : 7x7x7 : Measurement x=5mm, y=5mm, z=5mm
Power Drift-Start : 1.055 W/kg
Power Drift-Finish : 1.077 W/kg
Power Drift (%) : 2.134

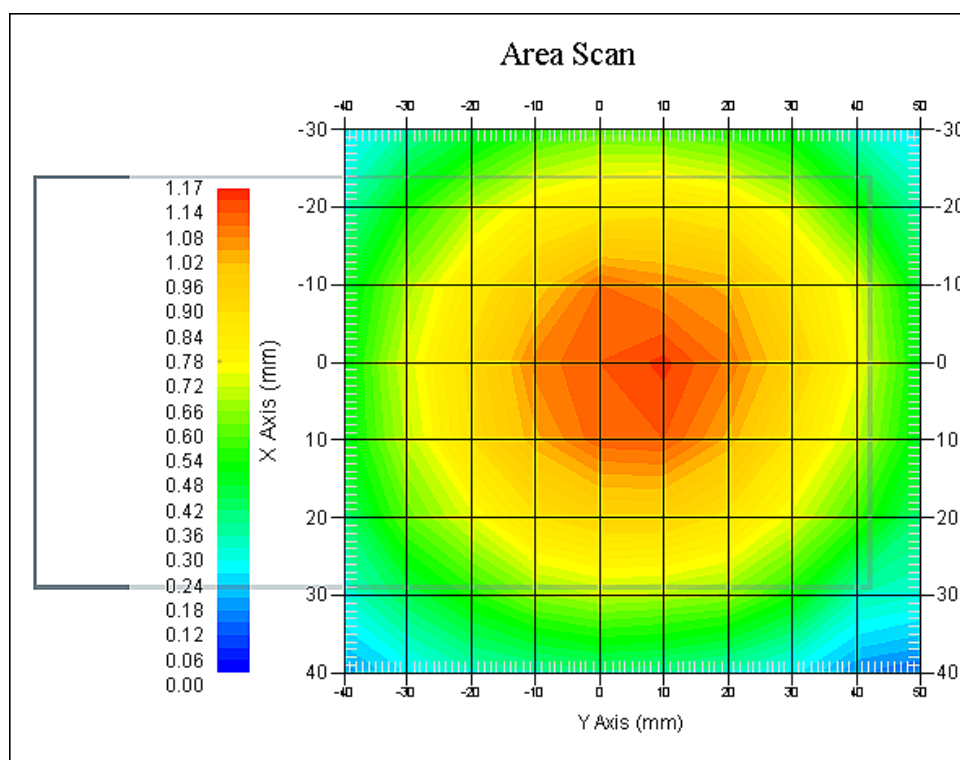
Tissue Data

Type : Body
Frequency : 848.8 MHz
Epsilon : 53.85 F/m
Sigma : 0.97 S/m
Density : 1000.00 kg/cu. m

Probe Data

Serial No. : 500-00283
Frequency Band : 835
Duty Cycle Factor : 2
Conversion Factor : 5.9
Probe Sensitivity : 1.20 1.20 1.20 $\mu\text{V}/(\text{V}/\text{m})^2$
Compression Point : 95.00 mV
Offset : 1.56 mm

1 gram SAR value : 1.150 W/kg
10 gram SAR value : 0.863 W/kg
Area Scan Peak SAR : 1.168 W/kg
Zoom Scan Peak SAR : 1.862 W/kg

Plot 5#

Test Laboratory: Bay Area Compliance Lab Corp. (Shenzhen)**Body-worn-Back (1909.8 MHz High Channel)**

Measurement Data

Test mode : GPRS
Crest Factor : 2
Scan Type : Complete
Area Scan : 8x11x1 : Measurement x=10mm, y=10mm, z=4mm
Zoom Scan : 7x7x7 : Measurement x=5mm, y=5mm, z=5mm
Power Drift-Start : 0.312 W/kg
Power Drift-Finish : 0.307 W/kg
Power Drift (%) : -1.623

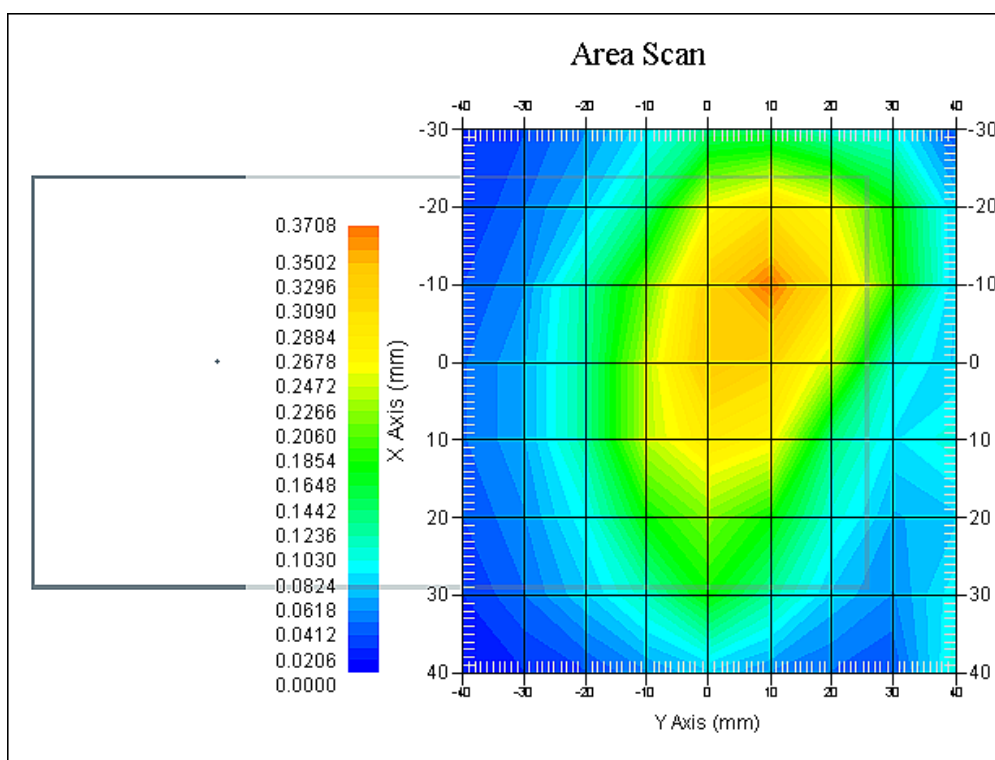
Tissue Data

Type : Body
Frequency : 1909.8 MHz
Epsilon : 52.00 F/m
Sigma : 1.54 S/m
Density : 1000.00 kg/cu. m

Probe Data

Serial No. : 500-00283
Frequency Band : 1900
Duty Cycle Factor : 2
Conversion Factor : 4.5
Probe Sensitivity : 1.20 1.20 1.20 $\mu\text{V}/(\text{V/m})^2$
Compression Point : 95.00 mV
Offset : 1.56 mm

1 gram SAR value : 0.361 W/kg
10 gram SAR value : 0.206 W/kg
Area Scan Peak SAR : 0.368 W/kg
Zoom Scan Peak SAR : 0.542 W/kg

Plot 6#

Test Laboratory: Bay Area Compliance Lab Corp. (Shenzhen)**WCDMA850; Body-Worn-Back (826.4 MHz Low Channel)**

Measurement Data

Test mode : WCDMA850
Crest Factor : 1
Scan Type : Complete
Area Scan : 11x8x1: Measurement x=10mm, y=10mm, z=4mm
Zoom Scan : 7x7x7: Measurement x=5mm, y=5mm, z=5mm
Power Drift-Start : 0.322 W/kg
Power Drift-Finish : 0.318 W/kg
Power Drift (%) : -1.253

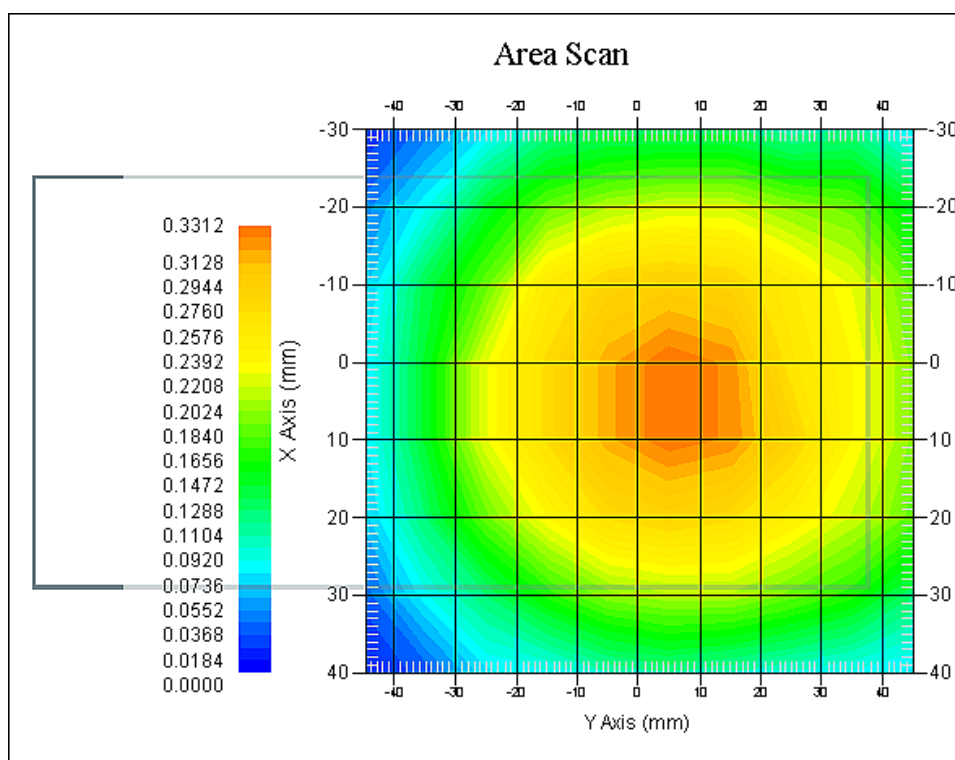
Tissue Data

Type : Body
Frequency : 826.4 MHz
Epsilon : 53.81 F/m
Sigma : 0.95 S/m
Density : 1000.00 kg/cu. m

Probe Data

Serial No. : 500-00283
Frequency Band : 835
Duty Cycle Factor : 1
Conversion Factor : 5.9
Probe Sensitivity : 1.20 1.20 1.20 $\mu\text{V}/(\text{V/m})^2$
Compression Point : 95.00 mV
Offset : 1.56 mm

1 gram SAR value : 0.322 W/kg
10 gram SAR value : 0.235 W/kg
Area Scan Peak SAR : 0.330 W/kg
Zoom Scan Peak SAR : 0.489 W/kg

Plot 7#

Test Laboratory: Bay Area Compliance Lab Corp. (Shenzhen)**802.11b; Body-Worn-Back (2412MHz, Channel 1)**

Measurement Data

Crest Factor : 1
Scan Type : Complete
Area Scan : 8x11x1 : Measurement x=10mm, y=10mm, z=4mm
Zoom Scan : 7x7x7 : Measurement x=5mm, y=5mm, z=5mm
Power Drift-Start : 0.006 W/kg
Power Drift-Finish : 0.006 W/kg
Power Drift (%) : -2.432

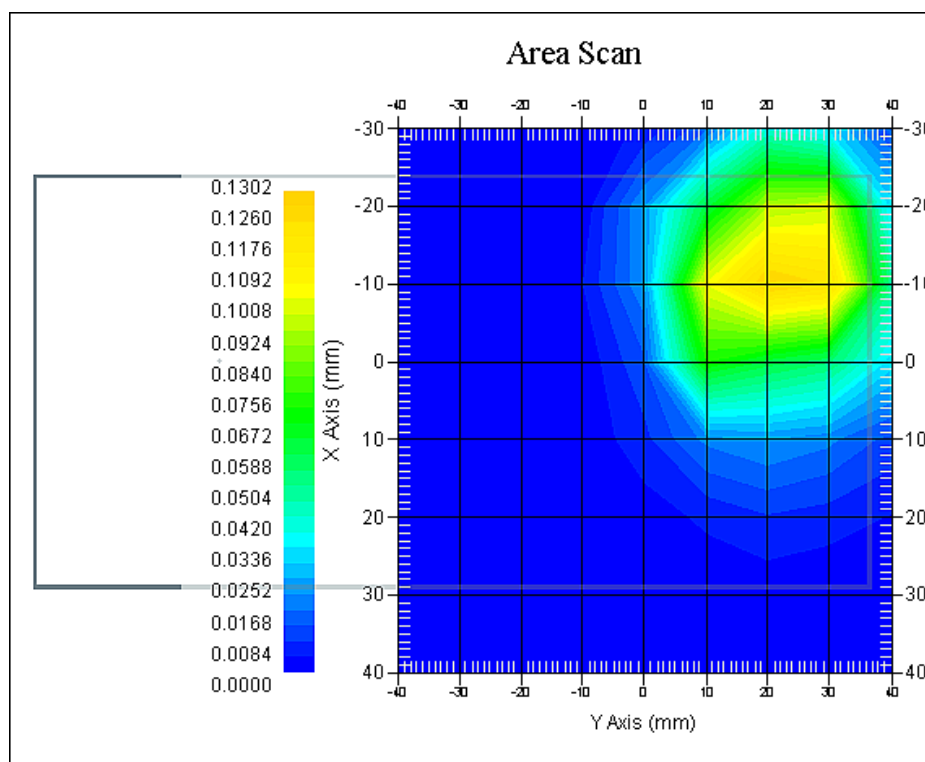
Tissue Data

Type : Body
Frequency : 2412 MHz
Epsilon : 52.80 F/m
Sigma : 1.99 S/m
Density : 1000.00 kg/cu. m

Probe Data

Serial No. : 500-00283
Frequency Band : 2450 MHz
Duty Cycle Factor : 1
Conversion Factor : 4.3
Probe Sensitivity : 1.20 1.20 1.20 $\mu\text{V}/(\text{V/m})^2$
Compression Point : 95.00 mV
Offset : 1.56 mm

1 gram SAR value : 0.125 W/kg
10 gram SAR value : 0.056 W/kg
Area Scan Peak SAR : 0.130 W/kg
Zoom Scan Peak SAR : 0.179 W/kg

Plot 8#

APPENDIX A MEASUREMENT UNCERTAINTY

The uncertainty budget has been determined for the measurement system and is given in the following Table.

Measurement Uncertainty for 30MHz to 6GHz

SOURCE OF UNCERTAINTY	TOLERANCE VALUE	PROBABILITY DISTRIBUTION	DIVISOR	C_1^1 (1-G)	C_1^1 (10-G)	STANDARD UNCERTAINTY (1-G) %	STANDARD UNCERTAINTY (10-G) %
MEASUREMENT SYSTEM							
Probe Calibration	3.5	normal	1	1	1	3.5	3.5
Axial Isotropy	3.7	rectangular	$\sqrt{3}$	$(1-cp)^{1/2}$	$(1-cp)^{1/2}$	1.5	1.5
Hemispherical Isotropy	10.9	rectangular	$\sqrt{3}$	\sqrt{cp}	\sqrt{cp}	4.4	4.4
Boundary Effect	2.1	rectangular	$\sqrt{3}$	1	1	1.21	1.21
Linearity	4.7	rectangular	$\sqrt{3}$	1	1	2.7	2.7
Detection Limit	1.0	rectangular	$\sqrt{3}$	1	1	0.6	0.6
Readout Electronics	1.0	normal	1	1	1	1.0	1.0
Response Time	0.8	rectangular	$\sqrt{3}$	1	1	0.5	0.5
Integration Time	1.7	rectangular	$\sqrt{3}$	1	1	1.0	1.0
RF Ambient Condition -Noise	1.0	rectangular	$\sqrt{3}$	1	1	0.6	0.6
RF Ambient Condition - Reflections	3.0	rectangular	$\sqrt{3}$	1	1	1.7	1.7
Probe Positioner Mech. Restrictions	0.4	rectangular	$\sqrt{3}$	1	1	0.2	0.2
Restriction							
Probe Positioning with respect to Phantom Shell	2.9	rectangular	$\sqrt{3}$	1	1	1.7	1.7
Extrapolation and Integration	3.7	rectangular	$\sqrt{3}$	1	1	2.1	2.1
Test Sample Positioning	1.0	normal	1	1	1	1.0	1.0
Device Holder Uncertainty	1.63	normal	1	1	1	1.63	1.63
Drift of Output Power	4.312	rectangular	$\sqrt{3}$	1	1	3.61	3.61
Phantom and Setup							
Phantom Uncertainty(shape & thickness tolerance)	3.4	rectangular	$\sqrt{3}$	1	1	2.0	2.0
Liquid Conductivity(target)	5.0	rectangular	$\sqrt{3}$	0.7	0.5	2.0	1.4
Liquid Conductivity(meas.)	0.369	normal	1	0.7	0.5	0.259	0.185
Liquid Permittivity(target)	5.0	rectangular	$\sqrt{3}$	0.6	0.5	1.7	1.4
Liquid Permittivity(meas.)	2.062	normal	1	0.6	0.5	1.237	1.031
Combined Uncertainty		RSS				9.165	8.973
Combined Uncertainty (coverage factor=2)		Normal(k=2)				18.33	17.95

APPENDIX B – PROBE CALIBRATION CERTIFICATES

NCL CALIBRATION LABORATORIES

Calibration File No.: PC-1598

Task No: BACL-5778

CERTIFICATE OF CALIBRATION

It is certified that the equipment identified below has been calibrated in the
NCL CALIBRATION LABORATORIES by qualified personnel following recognized
procedures and using transfer standards traceable to NRC/NIST.

Equipment: Miniature Isotropic RF Probe

Record of Calibration

Head and Body

Manufacturer: APREL Laboratories

Model No.: E-020

Serial No.: 500-00283

Calibration Procedure: D01-032-E020-V2, D22-012-Tissue, D28-002-Dipole
Project No: BACL-5745

Calibrated: 14th October 2014
Released on: 14th October 2014

This Calibration Certificate is Incomplete Unless Accompanied with the Calibration Results Summary

Released By: _____



Art Brennan, Quality Manager

NCL CALIBRATION LABORATORIES

Suite 102, 303 Terry Fox Dr,
OTTAWA, ONTARIO
CANADA K2K 3J1

Division of APREL Lab,
TEL: (613) 435-8300
FAX: (613) 435-8306

NCL Calibration Laboratories

Division of APREL Inc.

Introduction

This Calibration Report reproduces the results of the calibration performed in line with the references listed below. Calibration is performed using accepted methodologies as per the references listed below. Probes are calibrated for air, and tissue and the values reported are the results from the physical quantification of the probe through metrological practices.

Calibration Method

Probes are calibrated using the following methods.

<800 MHz

TEM Cell for sensitivity in air

Standard phantom using temperature transfer method for sensitivity in tissue

>800 MHz

Waveguide* method to determine sensitivity in air and tissue

*Waveguide is numerically (simulation) assessed to determine the field distribution and power

The boundary effect for the probe is assessed using a standard flat phantom where the probe output is compared against a numerically simulated series of data points

References

- o IEEE Standard 1528:2013
IEEE Recommended Practice for Determining the Peak Spatial-Average Specific Absorption Rate (SAR) in the Human Head from Wireless Communications Devices: Measurement Techniques
- o EN 62209-1:2006
Human Exposure to RF Fields from hand-held and body-mounted wireless communication devices - Human models, instrumentation, and procedures - Part 1: Procedure to measure the Specific Absorption Rate (SAR) for hand-held mobile wireless devices
- o IEC 62209-2:2010
Human exposure to RF fields from hand-held and body-mounted wireless devices - Human models, instrumentation, and procedures - Part 2: specific absorption rate (SAR) for wireless communication devices (30 MHz - 6 GHz)
- o TP-D01-032-E020-V2 E-Field probe calibration procedure
- o D22-012-Tissue dielectric tissue calibration procedure
- o D28-002-Dipole procedure for validation of SAR system using a dipole
- o IEEE 1309 Standard for Calibration of Electromagnetic Field Sensors and Probes, Excluding Antennas, from 9kHz to 40GHz

NCL Calibration Laboratories

Division of APREL Inc.

Conditions

Probe 500-00283 was a recalibration.

Ambient Temperature of the Laboratory: 22 °C +/- 1.5°C
Temperature of the Tissue: 21 °C +/- 1.5°C
Relative Humidity: < 60%

Primary Measurement Standards

Instrument	Serial Number	Cal due date
Tektronix USB Power Meter	11C940	May 14, 2015
Signal Generator HP 83640B	3844A00689	Feb 12, 2015

Secondary Measurement Standards

Network Analyzer Anritsu 37347C	002106	Feb. 20, 2015
---------------------------------	--------	---------------

Attestation

The below named signatories have conducted the calibration and review of the data which is presented in this calibration report.

We the undersigned attest that to the best of our knowledge the calibration of this subject has been accurately conducted and that all information contained within the results pages have been reviewed for accuracy.



Art Brennan, Quality Manager



Dan Brooks, Test Engineer

Page 3 of 10

This page has been reviewed for content and attested to on Page 2 of this document.

NCL Calibration Laboratories

Division of APREL Inc.

Probe Summary

Probe Type:	E-Field Probe E020
Serial Number:	500-00283
Frequency:	As presented on page 5
Sensor Offset:	1.56
Sensor Length:	2.5
Tip Enclosure:	Composite*
Tip Diameter:	< 2.9 mm
Tip Length:	55 mm
Total Length:	289 mm

*Resistive to recommended tissue recipes per IEEE-1528

Sensitivity in Air

Channel X:	1.2 $\mu\text{V}/(\text{V}/\text{m})^2$
Channel Y:	1.2 $\mu\text{V}/(\text{V}/\text{m})^2$
Channel Z:	1.2 $\mu\text{V}/(\text{V}/\text{m})^2$
Diode Compression Point:	95 mV

Page 4 of 10

This page has been reviewed for content and attested to on Page 2 of this document.

NCL Calibration Laboratories

Division of APREL Inc.

Calibration for Tissue (Head H, Body B)

Frequency	Tissue Type	Measured Epsilon	Measured Sigma	Standard Uncertainty (%)	Calibration Frequency Range (MHz)	Conversion Factor
450 H	Head	43.59	0.86	3.5	±50	5.7
450 B	Body	56.74	0.94	3.5	±50	5.8
750 H	Head	42.98	0.92	3.5	±50	6.0
750 B	Body	43.05	0.93	3.5	±50	5.5
835 H	Head	43.42	0.94	3.5	±50	5.9
835 B	Body	55.77	1.01	3.5	±50	5.9
900 H	Head	41.87	1.06	3.5	±50	6.0
900 B	Body	55.62	1.05	3.5	±50	5.9
1450 H	Head	X	X	X	X	X
1450 B	Body	X	X	X	X	X
1500 H	Head	X	X	X	X	X
1500 B	Body	X	X	X	X	X
1640 H	Head	X	X	X	X	X
1640 B	Body	X	X	X	X	X
1750 H	Head	38.23	1.38	3.5	±75	5.4
1750 B	Body	52.86	1.54	3.5	±75	5.3
1800 H	Head	X	X	X	X	X
1800 B	Body	X	X	X	X	X
1900 H	Head	40.20	1.38	3.5	±75	4.8
1900 B	Body	52.63	1.46	3.5	±75	4.5
2000 H	Head	X	X	X	X	X
2000 B	Body	X	X	X	X	X
2100 H	Head	X	X	X	X	X
2100 B	Body	X	X	X	X	X
2300 H	Head	X	X	X	X	X
2300 B	Body	X	X	X	X	X
2450 H	Head	37.26	1.84	3.5	±75	4.9
2450 B	Body	53.61	1.9	3.5	±75	4.3
3000 H	Head	X	X	X	X	X
3000 B	Body	X	X	X	X	X
3600 H	Head	37.49	3.16	3.5	±100	4.5
3600 B	Body	49.94	3.86	3.5	±100	4.0
5250 H	Head	35.51	4.78	3.5	±100	3.0
5250 B	Body	47.54	5.11	3.5	±100	2.8
5600 H	Head	36.05	5.15	3.5	±100	2.8
5600 B	Body	46.49	5.72	3.5	±100	2.2
5800 H	Head	45.99	6.01	3.5	±100	3.2
5800 B	Body	35.6	5.37	3.5	±100	2.5

Page 5 of 10

This page has been reviewed for content and attested to on Page 2 of this document.

NCL Calibration Laboratories

Division of APREL Inc.

Boundary Effect:

Uncertainty resulting from the boundary effect is less than 2.1% for the distance between the tip of the probe and the tissue boundary, when less than 0.58mm.

Spatial Resolution:

The spatial resolution uncertainty is less than 1.5% for 4.9mm diameter probe.
The spatial resolution uncertainty is less than 1.0% for 2.5mm diameter probe.

DAQ-PAQ Contribution

To minimize the uncertainty calculation all tissue sensitivity values were calculated using a load impedance of 5 M Ω .

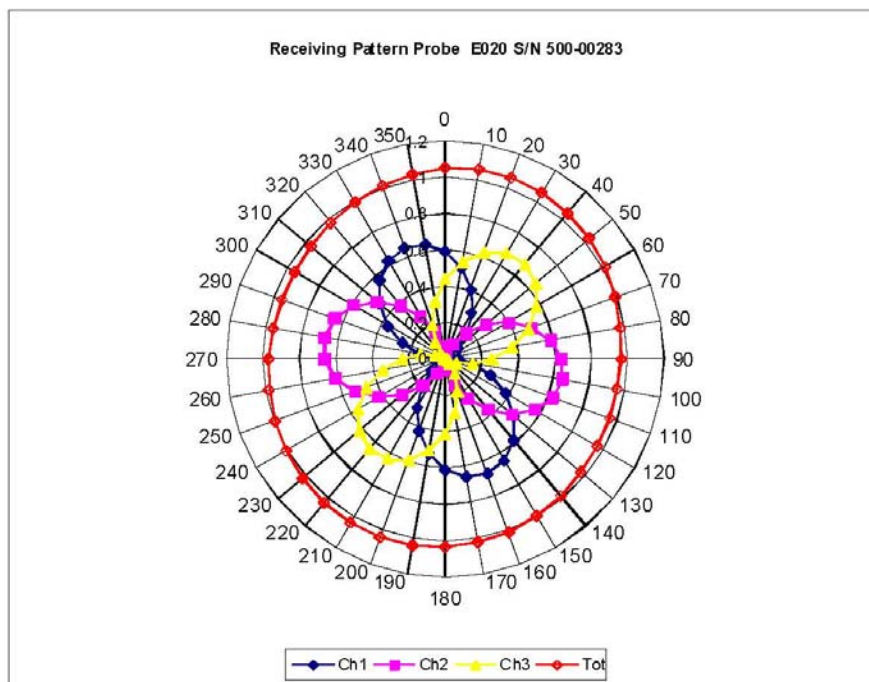
Probe Calibration Uncertainty

Uncertainty component	Tolerance (\pm %)	Probability distribution	Divisor	Standard uncertainty (\pm %)
Incident or forward power	2.5	R	$\sqrt{3}$	1.44
Reflected power	2	R	$\sqrt{3}$	1.15
Liquid conductivity measurement	1	R	$\sqrt{3}$	0.58
Liquid permittivity measurement	1	R	$\sqrt{3}$	0.58
Liquid conductivity deviation	1.5	R	$\sqrt{3}$	0.87
Liquid permittivity deviation	1.5	R	$\sqrt{3}$	0.87
Frequency deviation	2.25	R	$\sqrt{3}$	1.30
Field homogeneity	2.5	R	$\sqrt{3}$	1.44
Field-probe positioning	2.5	R	$\sqrt{3}$	1.44
Field-probe linearity	1.55	R	$\sqrt{3}$	0.89
Combined standard uncertainty		RSS		3.50

NCL Calibration Laboratories

Division of APREL Inc.

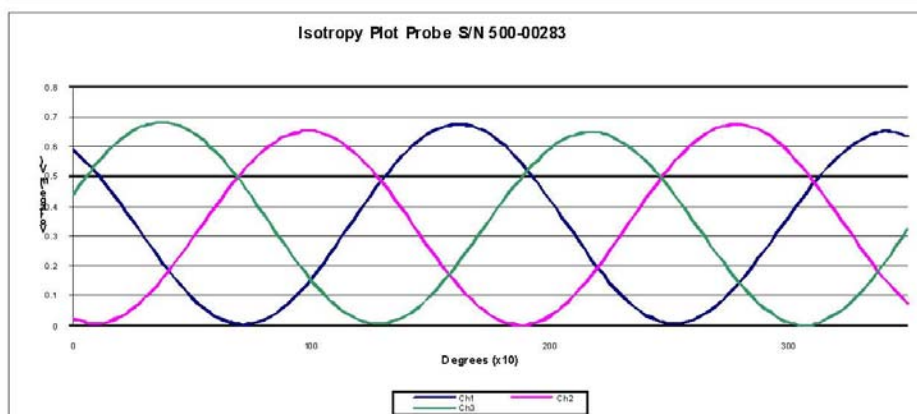
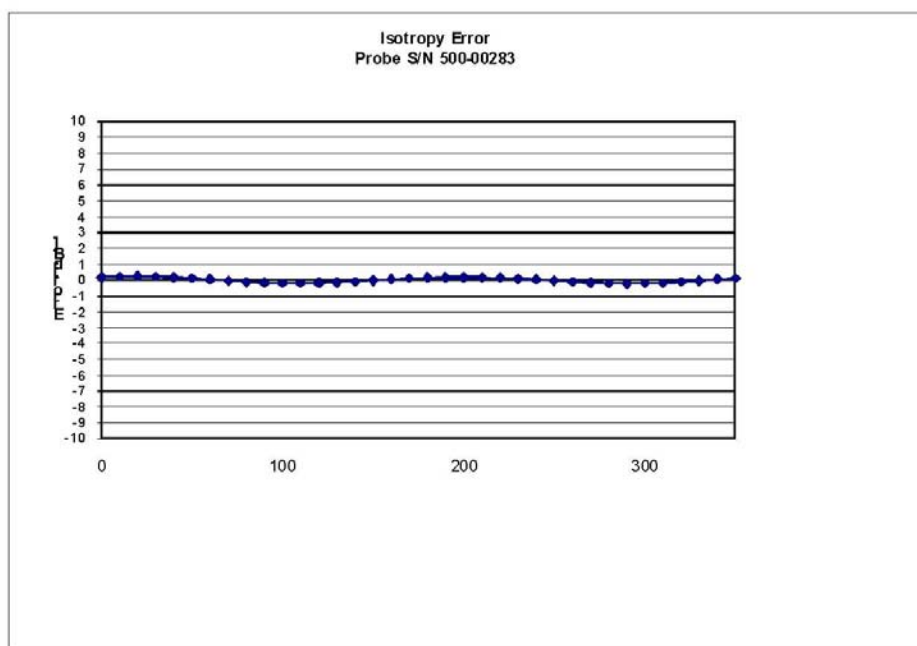
Receiving Pattern Air



NCL Calibration Laboratories

Division of APREL Inc.

Isotropy Error Air



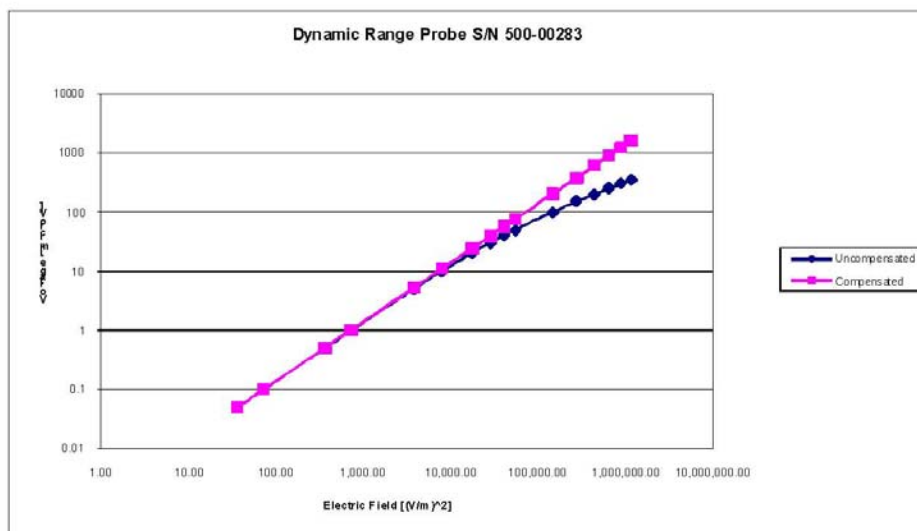
Isotropy Tissue:

0.10 dB

NCL Calibration Laboratories

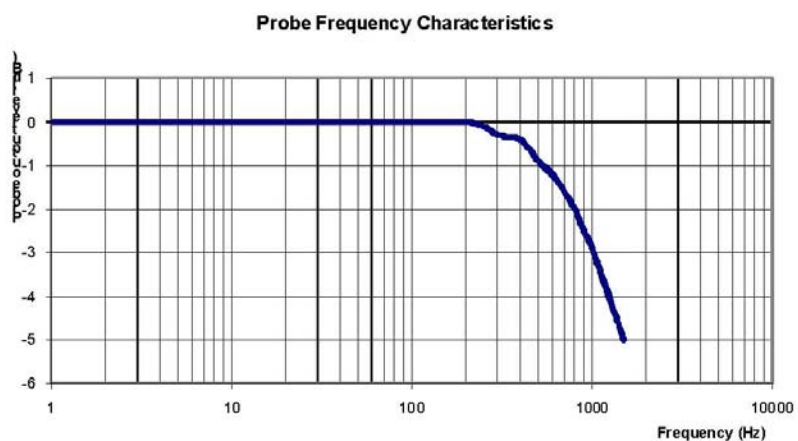
Division of APREL Inc.

Dynamic Range



NCL Calibration Laboratories

Division of APREL Inc.

Video Bandwidth

Video Bandwidth at 500 Hz 1 dB
Video Bandwidth at 1.02 KHz: 3 dB

Test Equipment

The test equipment used during Probe Calibration, manufacturer, model number and, current calibration status are listed and located on the main APREL server R:\NCL\Calibration Equipment\Instrument List May 2014.

Page 10 of 10

This page has been reviewed for content and attested to on Page 2 of this document.

APPENDIX C DIPOLE CALIBRATION CERTIFICATES

NCL CALIBRATION LABORATORIES

Calibration File No: DC-1599
Project Number: BAC-dipole-cal-5779

CERTIFICATE OF CALIBRATION

It is certified that the equipment identified below has been calibrated in the
NCL CALIBRATION LABORATORIES by qualified personnel following recognized
procedures and using transfer standards traceable to NRC/NIST.

Validation Dipole(Head and Body)

Manufacturer: APREL Laboratories

Part number: ALS-D-835-S-2

Frequency: 835 MHz

Serial No: 180-00558

Customer: Bay Area Compliance Laboratory (China)

Calibrated: 8th October 2014
Released on: 8th October 2014

This Calibration Certificate is Incomplete Unless Accompanied with the Calibration Results Summary

Released By:



Art Brennan, Quality Manager

NCL CALIBRATION LABORATORIES

Suite 102, 303 Terry Fox Dr.
Kanata, ONTARIO
CANADA K2K 3J1

Division of APREL Lab.
TEL: (613) 435-8300
FAX: (613)435-8306

NCL Calibration Laboratories

Division of APREL Laboratories.

Conditions

Dipole 180-00558 was received with a damaged connection for a re-calibration.

Ambient Temperature of the Laboratory: 22 °C +/- 0.5°C

Temperature of the Tissue: 21 °C +/- 0.5°C

Attestation

The below named signatories have conducted the calibration and review of the data which is presented in this calibration report.

We the undersigned attest that to the best of our knowledge the calibration of this subject has been accurately conducted and that all information contained within the results pages have been reviewed for accuracy.



Art Brennan, Quality Manager



Maryna Nesterova Calibration Engineer

Primary Measurement Standards

Instrument	Serial Number	Cal due date
Tektronix USB Power Meter	11C940	May 14, 2015
Network Analyzer Anritsu 37347C	002106	Feb. 20, 2015

This page has been reviewed for content and attested to by signature within this document.

NCL Calibration Laboratories

Division of APREL Laboratories.

Calibration Results Summary

The following results relate the Calibrated Dipole and should be used as a quick reference for the user.

Mechanical Dimensions

Length: 162.2 mm

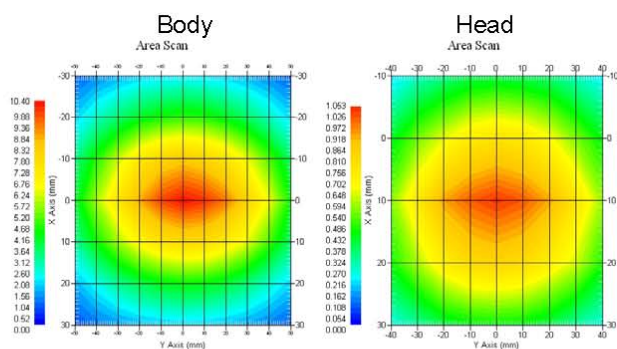
Height: 89.4 mm

Electrical Specification

Tissue	Frequency	SWR:	Return Loss	Impedance
Head	835 MHz	1.066 U	-30.344 dB	49.001 Ω
Body	835 MHz	1.089 U	-28.118 dB	53.117 Ω

System Validation Results

Tissue	Frequency	1 Gram	10 Gram	Peak
Head	835 MHz	9.773	6.174	14.713
Body	835 MHz	9.736	6.297	14.513



This page has been reviewed for content and attested to by signature within this document.

3

NCL Calibration Laboratories

Division of APREL Laboratories.

Introduction

This Calibration Report has been produced in line with the SSI Dipole Calibration Procedure SSI-TP-018-ALSAS. The results contained within this report are for Validation Dipole 180-00558. The calibration routine consisted of a three-step process. Step 1 was a mechanical verification of the dipole to ensure that it meets the mechanical specifications. Step 2 was an Electrical Calibration for the Validation Dipole, where the SWR, Impedance, and the Return loss were assessed. Step 3 involved a System Validation using the ALSAS-10U, along with APREL E-020 30 MHz to 6 GHz E-Field Probe Serial Number 225.

References

- SSI-TP-018-ALSAS Dipole Calibration Procedure
- SSI-TP-016 Tissue Calibration Procedure
- IEEE 1528:2013 "Recommended Practice for Determining the Peak Spatial-Average Specific Absorption Rate (SAR) in the Human Head from Wireless Communications Devices: Measurement Techniques"
- IEC-62209-1:2006 "Human exposure to radio frequency fields from hand-held and body-mounted wireless communication devices – Human models, instrumentation, and procedures"
Part 1: "Procedure to determine the Specific Absorption Rate (SAR) for hand-held devices used in close proximity of the ear (frequency range of 300 MHz to 3 GHz)"
- IEC-62209-2:2010 "Human exposure to radio frequency fields from hand-held and body-mounted wireless communication devices – Human models, instrumentation, and procedures"
Part 2: "Procedure to determine the Specific Absorption Rate (SAR) for hand-held devices used in close proximity of the ear (frequency range of 30 MHz to 6 GHz)"
- D28-002 Procedure for validation of SAR system using a dipole

Conditions

Dipole 180-00558 was repaired prior to this calibration. The repair reliability depends upon correct usage of the dipole.

Ambient Temperature of the Laboratory: 22 °C +/- 0.5°C

Temperature of the Tissue: 20 °C +/- 0.5°C

Dipole Calibration uncertainty

The calibration uncertainty for the dipole is made up of various parameters presented below.

Mechanical	1%
Positioning Error	1.22%
Electrical	1.7%
Tissue	2.2%
Dipole Validation	2.2%
TOTAL	8.32% (16.64% K=2)

4

This page has been reviewed for content and attested to by signature within this document.

NCL Calibration Laboratories

Division of APREL Laboratories.

Dipole Calibration Results**Mechanical Verification**

APREL Length	APREL Height	Measured Length	Measured Height
161.0 mm	89.8 mm	162.2 mm	89.4 mm

Electrical Verification

Tissue Type	Return Loss:	SWR:	Impedance:
Head	-30.344 dB	1.066 U	49.001 Ω
Body	-28.118 dB	1.089 U	53.117 Ω □

Tissue Validation

	Dielectric constant, ϵ_r	Conductivity, σ [S/m]
Head Tissue 835MHz	43.42	0.94
Body Tissue 835MHz	55.77	1.01

This page has been reviewed for content and attested to by signature within this document.

5

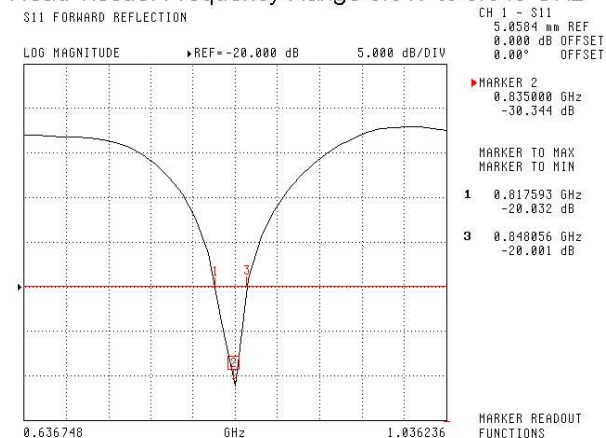
NCL Calibration Laboratories

Division of APREL Laboratories.

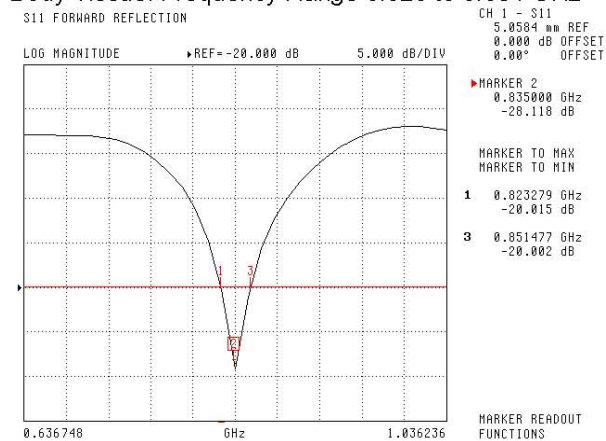
The Following Graphs are the results as displayed on the Vector Network Analyzer.

S11 Parameter Return Loss

Head Tissue: Frequency Range 0.817 to 0.848 GHz



Body Tissue: Frequency Range 0.823 to 0.851 GHz



This page has been reviewed for content and attested to by signature within this document.

6