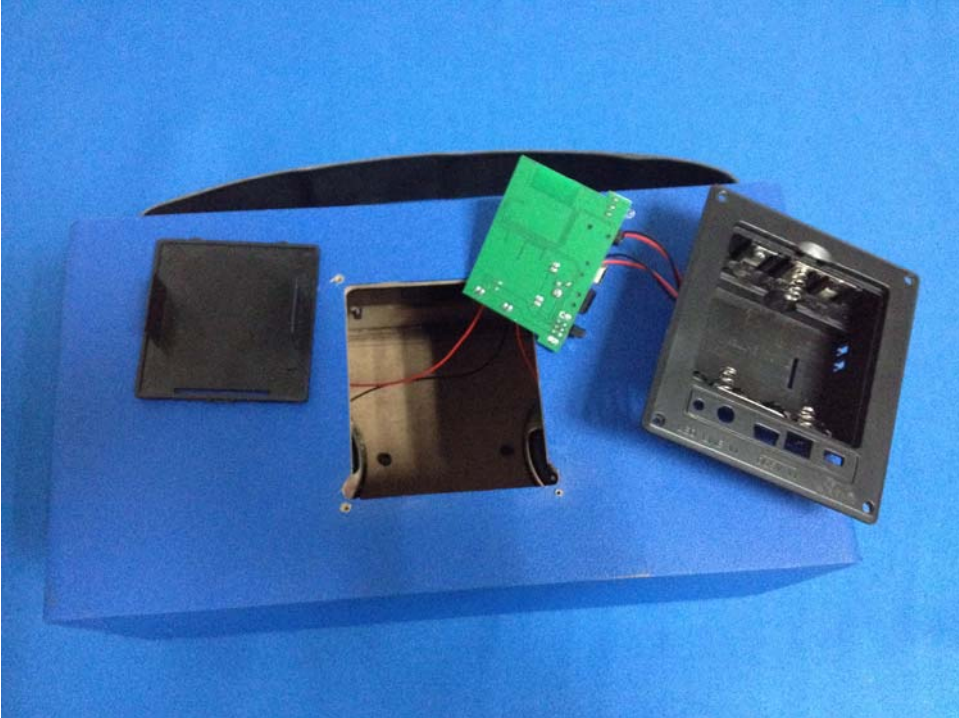
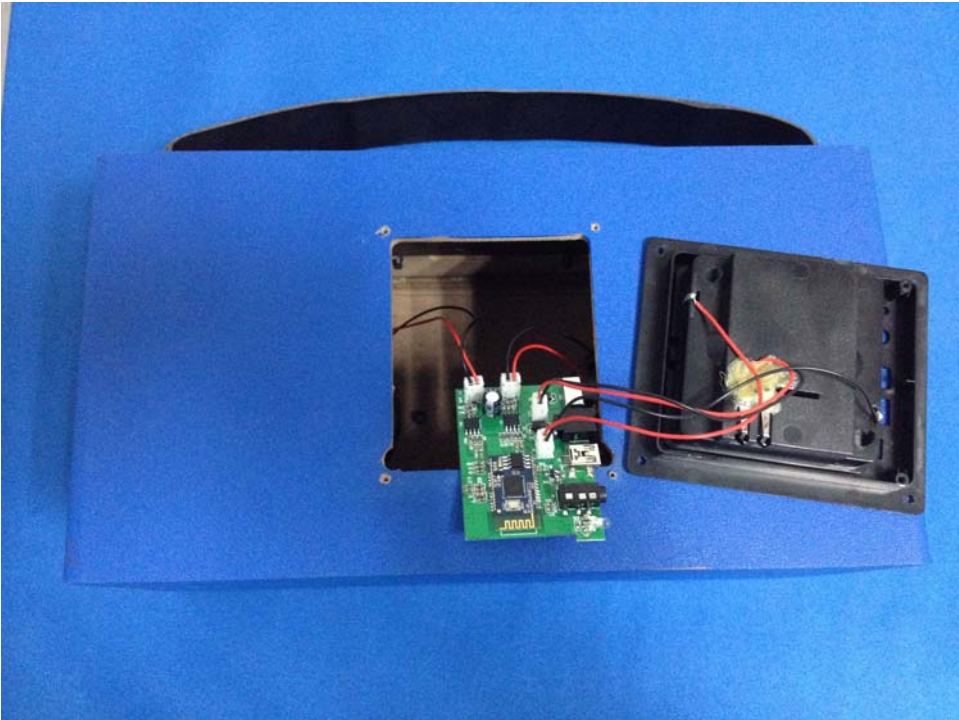
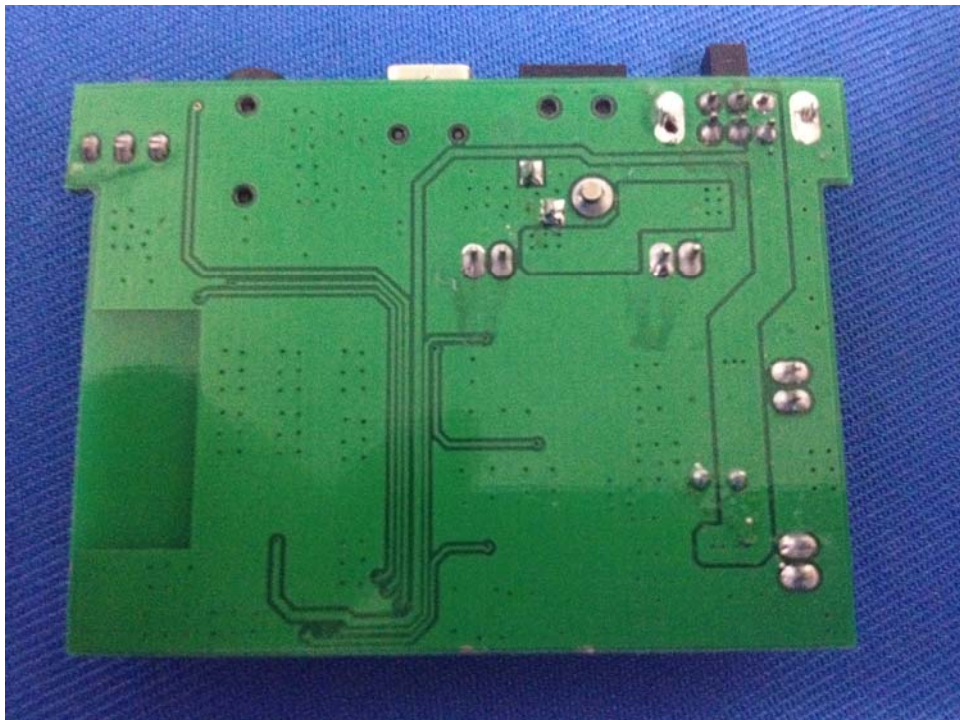
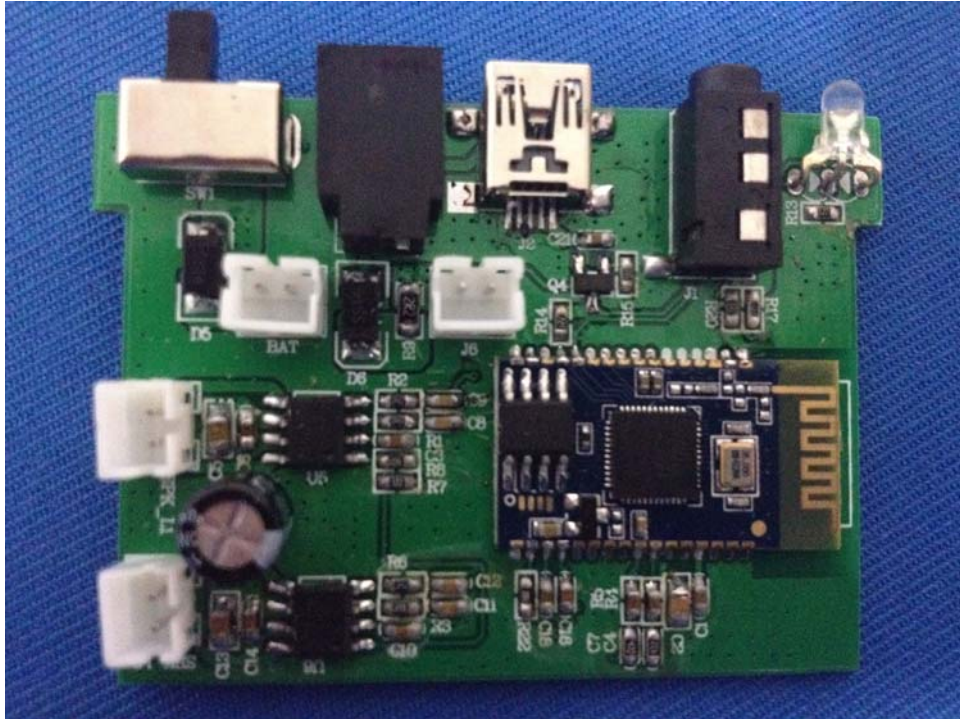
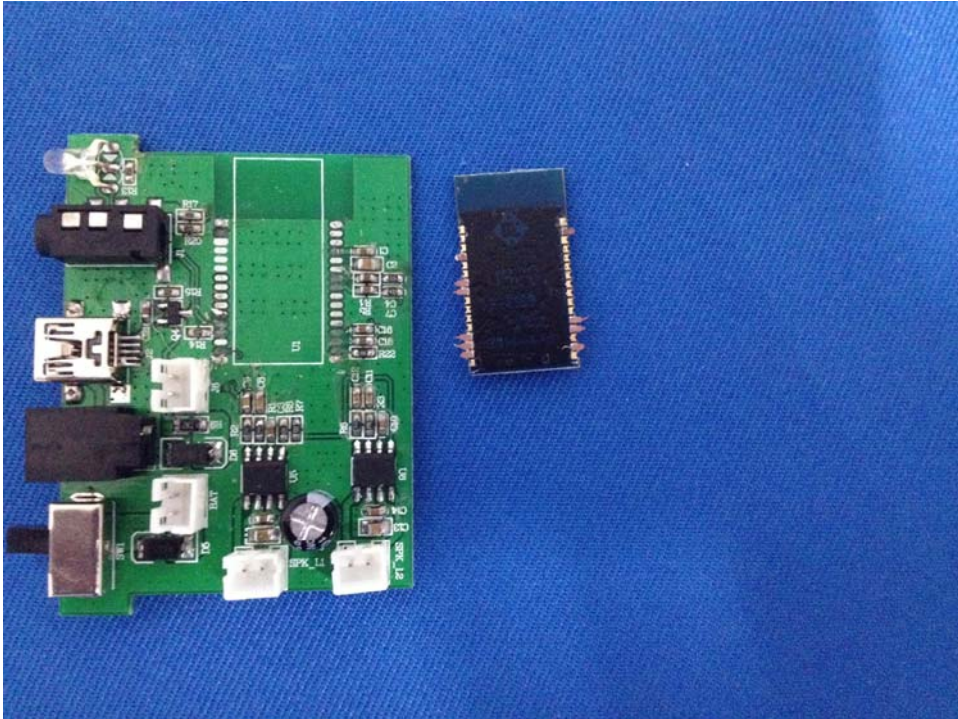


Internal photo









3.7V

RECHARGEABLE Li-ion
BATTERY.
USE SPECIFIED
CHARGER ONLY.
MUST BE DISPOSED OF
PROPERLY.
MAY EXPLODE IF
DAMAGED OR
DISPOSED OF IN FIRE.
DO NOT SHORT-
CIRCUIT.



Li-ion

GB/T18287-2000
MADE IN CHINA