
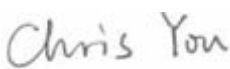



RF TEST REPORT



Report No.: 15070273-FCC-R4

Supersede Report No.: N/A

| | | |
|--|---|---|
| Applicant | Social Mobile Telecommunications | |
| Product Name | PHONE | |
| Model No. | X301 | |
| Serial No. | Vapor | |
| Test Standard | FCC Part 15.247: 2014, ANSI C63.10: 2013 | |
| Test Date | April 17 to April 27, 2015 | |
| Issue Date | May 08, 2015 | |
| Test Result | <input checked="" type="checkbox"/> Pass <input type="checkbox"/> Fail | |
| Equipment complied with the specification <input checked="" type="checkbox"/> | | |
| Equipment did not comply with the specification <input type="checkbox"/> | | |
|  |  |  |
| Wiky.Jam Test Engineer | Chris You Checked By | |
| This test report may be reproduced in full only Test result presented in this test report is applicable to the tested sample only | | |

Issued by:

SIEMIC (SHENZHEN-CHINA) LABORATORIES

Zone A, Floor 1, Building 2 Wan Ye Long Technology Park

South Side of Zhoushi Road, Bao' an District, Shenzhen, Guangdong China 518108

Phone: +86 0755 2601 4629801 Email: China@siemic.com.cn

Laboratories Introduction

SIEMIC, headquartered in the heart of Silicon Valley, with superior facilities in US and Asia, is one of the leading independent testing and certification facilities providing customers with one-stop shop services for Compliance Testing and Global Certifications.



In addition to testing and certification, SIEMIC provides initial design reviews and compliance management throughout a project. Our extensive experience with China, Asia Pacific, North America, European, and International compliance requirements, assures the fastest, most cost effective way to attain regulatory compliance for the global markets.

Accreditations for Conformity Assessment

| Country/Region | Scope |
|----------------|------------------------------------|
| USA | EMC, RF/Wireless, SAR, Telecom |
| Canada | EMC, RF/Wireless, SAR, Telecom |
| Taiwan | EMC, RF, Telecom, SAR, Safety |
| Hong Kong | RF/Wireless, SAR, Telecom |
| Australia | EMC, RF, Telecom, SAR, Safety |
| Korea | EMI, EMS, RF, SAR, Telecom, Safety |
| Japan | EMI, RF/Wireless, SAR, Telecom |
| Singapore | EMC, RF, SAR, Telecom |
| Europe | EMC, RF, SAR, Telecom, Safety |

| | |
|-----------------|-----------------|
| Test Report No. | 15070273-FCC-R4 |
| Page | 3 of 38 |

This page has been left blank intentionally.

CONTENTS

| | |
|--|----|
| 1. REPORT REVISION HISTORY | 5 |
| 2. CUSTOMER INFORMATION | 5 |
| 3. TEST SITE INFORMATION | 5 |
| 4. EQUIPMENT UNDER TEST (EUT) INFORMATION | 6 |
| 5. TEST SUMMARY | 8 |
| 6. MEASUREMENTS, EXAMINATION AND DERIVED RESULTS | 9 |
| 6.1 ANTENNA REQUIREMENT | 9 |
| 6.2 DTS (6 DB) CHANNEL BANDWIDTH | 10 |
| 6.3 MAXIMUM OUTPUT POWER | 12 |
| 6.4 POWER SPECTRAL DENSITY | 14 |
| 6.5 BAND-EDGE & UNWANTED EMISSIONS INTO NON-RESTRICTED FREQUENCY BANDS | 16 |
| 6.6 AC POWER LINE CONDUCTED EMISSIONS | 19 |
| 6.7 RADIATED SPURIOUS EMISSIONS | 23 |
| ANNEX A. TEST INSTRUMENT | 28 |
| ANNEX B. EUT AND TEST SETUP PHOTOGRAPHS | 29 |
| ANNEX C. TEST SETUP AND SUPPORTING EQUIPMENT | 34 |
| ANNEX D. USER MANUAL / BLOCK DIAGRAM / SCHEMATICS / PARTLIST | 37 |
| ANNEX E. DECLARATION OF SIMILARITY | 38 |

1. Report Revision History

| Report No. | Report Version | Description | Issue Date |
|-----------------|----------------|-------------|--------------|
| 15070273-FCC-R4 | NONE | Original | May 08, 2015 |
| | | | |
| | | | |
| | | | |
| | | | |
| | | | |

2. Customer information

| | |
|------------------|---|
| Applicant Name | Social Mobile Telecommunications |
| Applicant Add | 16400 NW 2nd Ave. #201 Miami, Florida 33169 |
| Manufacturer | SMT TELECOMM HK LIMITED |
| Manufacturer Add | Unit C 8/F, CHARMHILL CTR 50 HILLWOOD RD TST KL |

3. Test site information

| | |
|----------------------|--|
| Lab performing tests | SIEMIC (Shenzhen-China) LABORATORIES |
| Lab Address | Zone A, Floor 1, Building 2 Wan Ye Long Technology Park South Side of Zhoushi Road, Bao' an District, Shenzhen, Guangdong China 518108 |
| FCC Test Site No. | 718246 |
| IC Test Site No. | 4842E-1 |
| Test Software | Radiated Emission Program-To Shenzhen v2.0 |

4. Equipment under Test (EUT) Information

Description of EUT: PHONE

Main Model: X301

Serial Model: Vapor

Date EUT received: April 15, 2015

Test Date(s): April 17 to April 27, 2015

Equipment Category : DTS

Antenna Gain:

GSM850: 0.8 dBi
PCS1900: -1 dBi
UMTS-FDD Band V: -0.7dBi
UMTS-FDD Band II: -0.9dBi
Bluetooth/BLE: -0.5dBi
WIFI: -0.5 dBi

Type of Modulation:

GSM / GPRS: GMSK
EGPRS: GMSK, 8PSK
UMTS-FDD: QPSK, 16QAM
802.11b/g/n: DSSS, OFDM
Bluetooth: GFSK, π /4DQPSK, 8DPSK
BLE: GFSK

RF Operating Frequency (ies):

GSM850 TX: 824.2 ~ 848.8 MHz; RX: 869.2 ~ 893.8 MHz
PCS1900 TX: 1850.2 ~ 1909.8 MHz; RX: 1930.2 ~ 1989.8 MHz
UMTS-FDD Band V TX: 826.4 ~ 846.6 MHz; RX: 871.4 ~ 891.6 MHz
UMTS-FDD Band II TX: 1852.4 ~ 1907.6 MHz;
RX: 1932.4 ~ 1987.6 MHz
UMTS-FDD Band IV TX : 1712.4 ~ 1752.6 MHz;
RX : 2112.4 ~ 2152.6 MHz
WIFI: 802.11b/g/n(20M): 2412-2462 MHz
WIFI: 802.11n(40M): 2422-2452 MHz
Bluetooth& BLE: 2402-2480 MHz

| | |
|-----------------|-----------------|
| Test Report No. | 15070273-FCC-R4 |
| Page | 7 of 38 |

Max. Output Power: -9.435 dBm

Number of Channels: GSM 850: 124CH
PCS1900: 299CH
UMTS-FDD Band V : 102CH
UMTS-FDD Band II : 277CH
UMTS-FDD Band IV: 202CH
WIFI :802.11b/g/n(20M): 11CH
WIFI :802.11n(40M): 7CH
Bluetooth: 79CH
BLE: 40CH

Port: Power Port, Earphone Port, USB Port

Input Power: Battery:
Model: BP X301
Spec: 3.7V 1200mAh 4.44Wh
Charging Limit Voltage:4.2V
Adapter:
Model: PC X301
Input: AC 100-240V; 50/60Hz 0.15A Max
Output: DC 5.0V; 0.5A

Trade Name : Vapor

GPRS/EGPRS Multi-slot class 8/10/12

FCC ID: 2ACLMX301V

5. Test Summary

The product was tested in accordance with the following specifications.

All testing has been performed according to below product classification:

| FCC Rules | Description of Test | Result |
|---------------------------------|--|------------|
| §15.203 | Antenna Requirement | Compliance |
| §15.247 (a)(2) | DTS (6 dB) CHANNEL BANDWIDTH | Compliance |
| §15.247(b)(3) | Conducted Maximum Output Power | Compliance |
| §15.247(e) | Power Spectral Density | Compliance |
| §15.247(d) | Band-Edge & Unwanted Emissions into Non-Restricted Frequency Bands | Compliance |
| §15.207 (a), | AC Power Line Conducted Emissions | Compliance |
| §15.205, §15.209, §15.247(d) | Radiated Spurious Emissions & Unwanted Emissions into Restricted Frequency Bands | Compliance |

Measurement Uncertainty

| Emissions | | |
|---|---|---------------|
| Test Item | Description | Uncertainty |
| Band Edge and Radiated Spurious Emissions | Confidence level of approximately 95% (in the case where distributions are normal), with a coverage factor of 2 (for EUTs < 0.5m X 0.5m X 0.5m) | +5.6dB/-4.5dB |
| - | - | - |

6. Measurements, Examination And Derived Results

6.1 Antenna Requirement

Applicable Standard

According to § 15.203, an intentional radiator shall be designed to ensure that no antenna other than that furnished by the responsible party shall be used with the device. The use of a permanently attached antenna or of an antenna that uses a unique coupling to the intentional radiator shall be considered sufficient to comply with the provisions of this section. The manufacturer may design the unit so that a broken antenna can be replaced by the user, but the user of a standard antenna jack or electrical connector is prohibited. The structure and application of the EUT were analyzed to determine compliance with section §15.203 of the rules. §15.203 state that the subject device must meet the following criteria:

- a. Antenna must be permanently attached to the unit.
- b. Antenna must use a unique type of connector to attach to the EUT.

Unit must be professionally installed, and installer shall be responsible for verifying that the correct antenna is employed with the unit.

And according to FCC 47 CFR section 15.247 (b), if the transmitting antennas of directional gain greater than 6dBi are used, the power shall be reduced by the amount in dB that the directional gain of the antenna exceeds 6 dBi.

Antenna Connector Construction

The EUT has 2 antennas:

A permanently attached PIFA antenna for Bluetooth/BLE/WIFI, the gain is -0.5dBi for Bluetooth/BLE/WIFI.

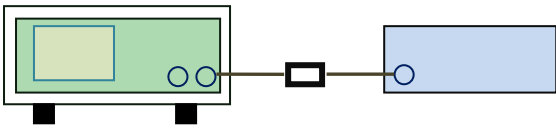
A permanently attached PIFA antenna for GSM and UMTS, the gain is 0.8dBi for GSM850, -0.7dBi for UMTS-FDD Band V, -1dBi for PCS1900, the gain is -0.9dBi for UMTS-FDD Band II

The antenna meets up with the ANTENNA REQUIREMENT.

Result: Compliance.

6.2 DTS (6 dB) Channel Bandwidth

| | |
|----------------------|----------------|
| Temperature | 22°C |
| Relative Humidity | 57% |
| Atmospheric Pressure | 1017mbar |
| Test date : | April 17, 2015 |
| Tested By : | Wiky.Jam |

| Spec | Item | Requirement | Applicable |
|----------------|---|---|-------------------------------------|
| § 15.247(a)(2) | a) | 6dB BW≥ 500kHz; | <input checked="" type="checkbox"/> |
| | b) | 99% BW: For FCC reference only; required by IC. | <input checked="" type="checkbox"/> |
| Test Setup |  <p style="text-align: center;">Spectrum Analyzer EUT</p> | | |
| Test Procedure | <p>558074 D01 DTS MEAS Guidance v03r02, 8.1 DTS bandwidth 6dB Emission bandwidth measurement procedure</p> <ul style="list-style-type: none"> - Set RBW = 100 kHz. - Set the video bandwidth (VBW) ≥ 3 ´ RBW. - Detector = Peak. - Trace mode = max hold. - Sweep = auto couple. - Allow the trace to stabilize. <p>Measure the maximum width of the emission that is constrained by the frequencies associated with the two outermost amplitude points (upper and lower frequencies) that are attenuated by 6 dB relative to the maximum level measured in the fundamental emission.</p> | | |
| Remark | | | |
| Result | <input checked="" type="checkbox"/> Pass <input type="checkbox"/> Fail | | |

Test Data ☒ Yes ☐ N/A

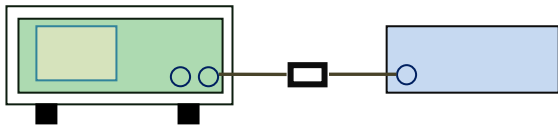
Test Plot ☒ Yes (See below) ☐ N/A

6dB Bandwidth - High CH 2480

6.3 Maximum Output Power

| | |
|----------------------|----------------|
| Temperature | 22°C |
| Relative Humidity | 57% |
| Atmospheric Pressure | 1017mbar |
| Test date : | April 17, 2015 |
| Tested By : | Wiky.Jam |

Requirement(s):

| Spec | Item | Requirement | Applicable |
|--------------------|--|--|-------------------------------------|
| §15.247(b) (2), | a) | FHSS in 2400-2483.5MHz with ≥ 75 channels: ≤ 1 Watt | <input type="checkbox"/> |
| | b) | FHSS in 5725-5850MHz: ≤ 1 Watt | <input type="checkbox"/> |
| | c) | For all other FHSS in the 2400-2483.5MHz band: ≤ 0.125 Watt. | <input type="checkbox"/> |
| | d) | FHSS in 902-928MHz with ≥ 50 channels: ≤ 1 Watt | <input type="checkbox"/> |
| | e) | FHSS in 902-928MHz with ≥ 25 & <50 channels: ≤ 0.25 Watt | <input type="checkbox"/> |
| | f) | DSSS in 902-928MHz, 2400-2483.5MHz, 5725-5850MHz: ≤ 1 Watt | <input checked="" type="checkbox"/> |
| Test Setup |  <p style="text-align: center;">Spectrum Analyzer EUT</p> | | |
| Test Procedure | <p>558074 D01 DTS MEAS Guidance v03r02, 9.1.2 Integrated band power method</p> <p>Maximum output power measurement procedure</p> <ol style="list-style-type: none"> Set the RBW \geq DTS bandwidth. Set VBW $\geq 3 \times$ RBW. Set span $\geq 3 \times$ RBW Sweep time = auto couple. Detector = peak. Trace mode = max hold. Allow trace to fully stabilize. Use peak marker function to determine the peak amplitude level. | | |
| Remark | | | |

Result



Pass



Fail

Test Data



Yes



N/A

Test Plot



Yes (See below)



N/A

Output Power measurement result

Test Data

| Type | CH | Freq (MHz) | Conducted Power (dBm) | Limit (dBm) | Result |
|--------------|------|------------|-----------------------|-------------|--------|
| Output power | Low | 2402 | -11.423 | 30 | Pass |
| | Mid | 2440 | -10.205 | 30 | Pass |
| | High | 2480 | -9.435 | 30 | Pass |

Test Plots



AV Output power - Low CH 2402



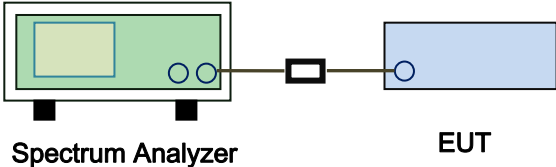
AV Output power - Mid CH 2440



AV Output power - High CH 2480

6.4 Power Spectral Density

| | |
|----------------------|----------------|
| Temperature | 22°C |
| Relative Humidity | 57% |
| Atmospheric Pressure | 1017mbar |
| Test date : | April 17, 2015 |
| Tested By : | Wiky.Jam |

| Spec | Item | Requirement | Applicable |
|----------------|---|--|-------------------------------------|
| §15.247(e) | a) | The power spectral density conducted from the intentional radiator to the antenna shall not be greater than 8 dBm in any 3 kHz band during any time interval of continuous transmission. | <input checked="" type="checkbox"/> |
| Test Setup |  <p style="text-align: center;">Spectrum Analyzer EUT</p> | | |
| Test Procedure | <p>558074 D01 DTS MEAS Guidance v03r02, 10.2 power spectral density method power spectral density measurement procedure</p> <ul style="list-style-type: none"> - a) Set analyzer center frequency to DTS channel center frequency. - b) Set the span to 1.5 times the DTS bandwidth. - c) Set the RBW to: $3 \text{ kHz} \leq \text{RBW} \leq 100 \text{ kHz}$. - d) Set the VBW $\geq 3 \times \text{RBW}$. - e) Detector = peak. - f) Sweep time = auto couple. - g) Trace mode = max hold. - h) Allow trace to fully stabilize. - i) Use the peak marker function to determine the maximum amplitude level within the RBW. - j) If measured value exceeds limit, reduce RBW (no less than 3 kHz) and repeat. | | |
| Remark | | | |
| Result | <input checked="" type="checkbox"/> Pass <input type="checkbox"/> Fail | | |

Test Data ☒ Yes ☐ N/A

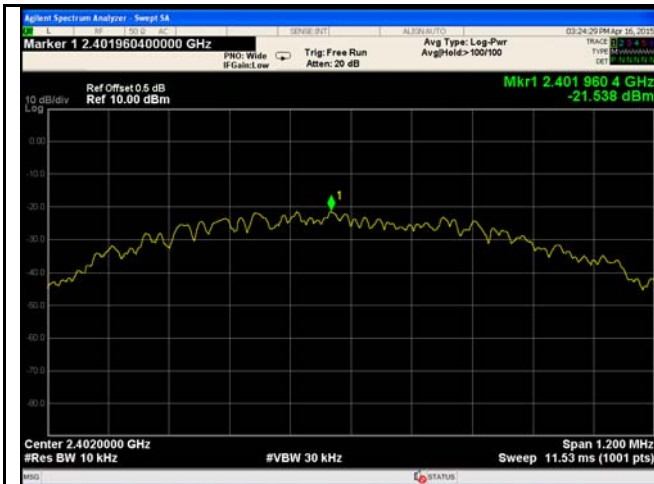
Test Plot ☒ Yes (See below) ☐ N/A

Power Spectral Density measurement result

Test Data

| Type | CH | Freq (MHz) | PSD (dBm) | Limit (dBm) | Result |
|------|------|------------|-----------|-------------|--------|
| PSD | Low | 2402 | -21.54 | 8 | Pass |
| | Mid | 2440 | -20.29 | 8 | Pass |
| | High | 2480 | -19.68 | 8 | Pass |

Test Plots



PSD - Low CH 2402



PSD - Mid CH 2440

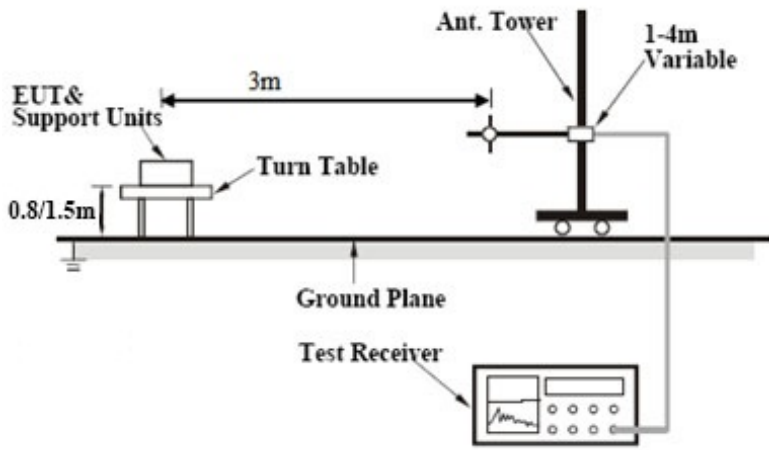


PSD - High CH 2480

6.5 Band-Edge & Unwanted Emissions into Non-Restricted Frequency Bands

| | |
|----------------------|----------------|
| Temperature | 24°C |
| Relative Humidity | 52% |
| Atmospheric Pressure | 1013mbar |
| Test date : | March 12, 2015 |
| Tested By : | Wiky.Jam |

Requirement(s):

| Spec | Item | Requirement | Applicable |
|----------------|---|---|-------------------------------------|
| §15.247(d) | a) | In any 100 kHz bandwidth outside the frequency band in which the spread spectrum or digitally modulated intentional radiator is operating, the radio frequency power that is produced by the intentional radiator shall be at least 20 dB below that in the 100 kHz bandwidth within the band that contains the highest level of the desired power, based on either an RF conducted or a radiated measurement, provided the transmitter demonstrates compliance with the peak conducted power limits. | <input checked="" type="checkbox"/> |
| Test Setup |  | | |
| Test Procedure | <p>Radiated Method Only</p> <ul style="list-style-type: none"> 1. Check the calibration of the measuring instrument using either an internal calibrator or a known signal from an external generator. 2. Position the EUT without connection to measurement instrument. Put it on the Rotated table and turn on the EUT and make it operate in transmitting mode. Then set it to Low Channel and High Channel within its operating range, and make sure the instrument is operated in its linear range. | | |

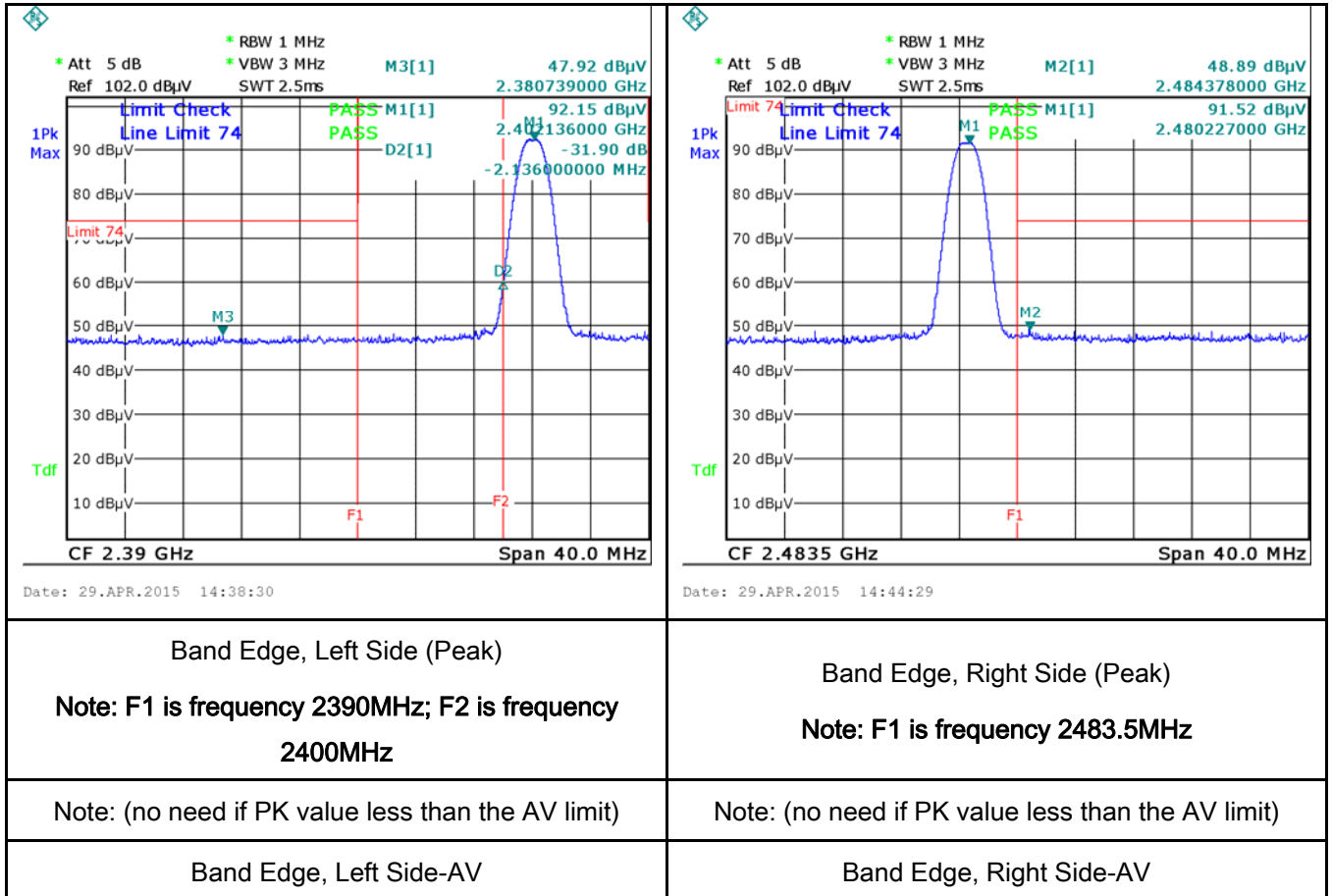
| | |
|-----------------|-----------------|
| Test Report No. | 15070273-FCC-R4 |
| Page | 17 of 38 |

| | |
|--------|---|
| | <ul style="list-style-type: none"> - 3. First, set both RBW and VBW of spectrum analyzer to 100 kHz with a convenient frequency span including 100kHz bandwidth from band edge, check the emission of EUT, if pass then set Spectrum Analyzer as below: <ul style="list-style-type: none"> a. The resolution bandwidth and video bandwidth of test receiver/spectrum analyzer is 120 kHz for Quasiy Peak detection at frequency below 1GHz. b. The resolution bandwidth of test receiver/spectrum analyzer is 1MHz and video bandwidth is 3MHz with Peak detection for Peak measurement at frequency above 1GHz. c. The resolution bandwidth of test receiver/spectrum analyzer is 1MHz and the video bandwidth is 10Hz with Peak detection for Average Measurement as below at frequency above 1GHz. - 4. Measure the highest amplitude appearing on spectral display and set it as a reference level. Plot the graph with marking the highest point and edge frequency. - 5. Repeat above procedures until all measured frequencies were complete. |
| Remark | |
| Result | <input checked="" type="checkbox"/> Pass <input type="checkbox"/> Fail |

Test Data ☒ Yes ☐ N/A
 Test Plot ☒ Yes (See below) ☐ N/A

Test Plots

Band Edge measurement result



6.6 AC Power Line Conducted Emissions

| | |
|----------------------|----------------|
| Temperature | 21°C |
| Relative Humidity | 56% |
| Atmospheric Pressure | 1017mbar |
| Test date : | March 16, 2015 |
| Tested By : | Wiky.Jam |

Requirement(s):

| Spec | Item | Requirement | Applicable | | |
|---------------|------|--|--|--------------|---------|
| 47CFR§15.207, | a) | For Low-power radio-frequency devices that is designed to be connected to the public utility (AC) power line, the radio frequency voltage that is conducted back onto the AC power line on any frequency or frequencies, within the band 150 kHz to 30 MHz, shall not exceed the limits in the following table, as measured using a 50 [mu] H/50 ohms line impedance stabilization network (LISN). The lower limit applies at the boundary between the frequencies ranges. | <div><input checked="" type="checkbox"/></div> | | |
| | | | | | |
| | | Frequency ranges (MHz) | | Limit (dBµV) | |
| | | | | QP | Average |
| | | 0.15 ~ 0.5 | | 66 – 56 | 56 – 46 |
| | | 0.5 ~ 5 | | 56 | 46 |
| 5 ~ 30 | 60 | 50 | | | |

| | |
|------------|--|
| Test Setup | <p>Note: 1. Support units were connected to second LISN. 2. Both of LISNs (AMN) are 80cm from EUT and at least 80cm from other units and other metal planes support units.</p> |
|------------|--|

| | |
|-----------|---|
| Procedure | <ol style="list-style-type: none"> The EUT and supporting equipment were set up in accordance with the requirements of the standard on top of a 1.5m x 1m x 0.8m high, non-metallic table. The power supply for the EUT was fed through a 50W/50mH EUT LISN, connected to filtered mains. The RF OUT of the EUT LISN was connected to the EMI test receiver via a low-loss |
|-----------|---|

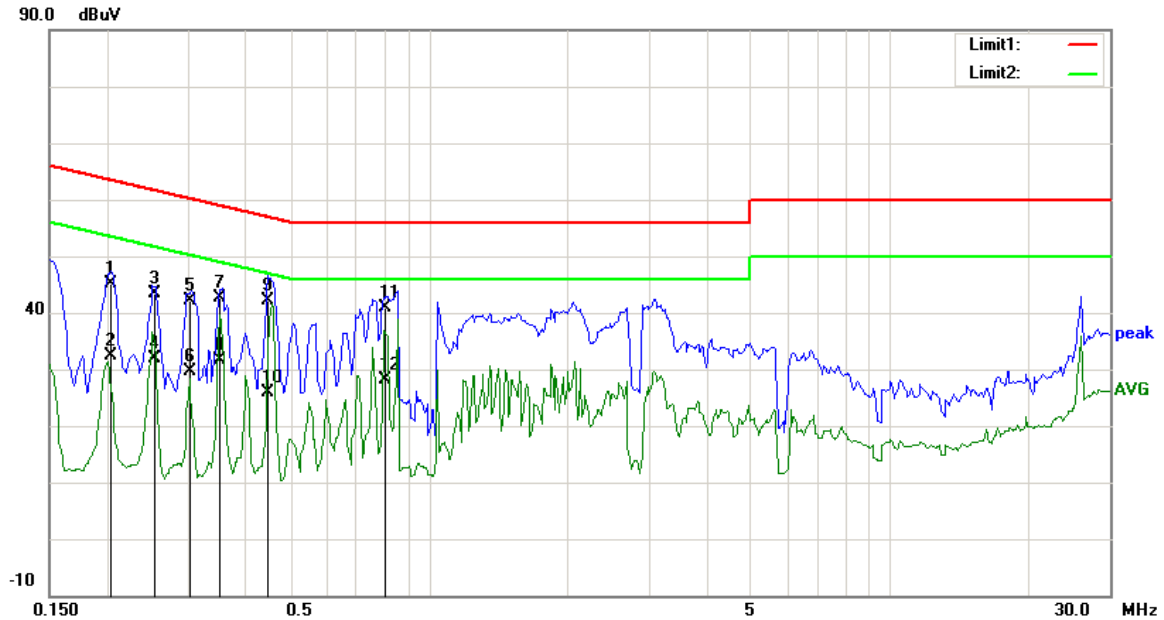
| | |
|-----------------|-----------------|
| Test Report No. | 15070273-FCC-R4 |
| Page | 20 of 38 |

| | |
|--------|--|
| | <p>coaxial cable.</p> <ol style="list-style-type: none"> 4. All other supporting equipment were powered separately from another main supply. 5. The EUT was switched on and allowed to warm up to its normal operating condition. 6. A scan was made on the NEUTRAL line (for AC mains) or Earth line (for DC power) over the required frequency range using an EMI test receiver. 7. High peaks, relative to the limit line, The EMI test receiver was then tuned to the selected frequencies and the necessary measurements made with a receiver bandwidth setting of 10 kHz. 8. Step 7 was then repeated for the LIVE line (for AC mains) or DC line (for DC power). |
| Remark | |
| Result | <input checked="" type="checkbox"/> Pass <input type="checkbox"/> Fail |

Test Data ☒ Yes ☐ N/A

Test Plot ☒ Yes (See below) ☐ N/A

Test Mode: Transmitting Mode

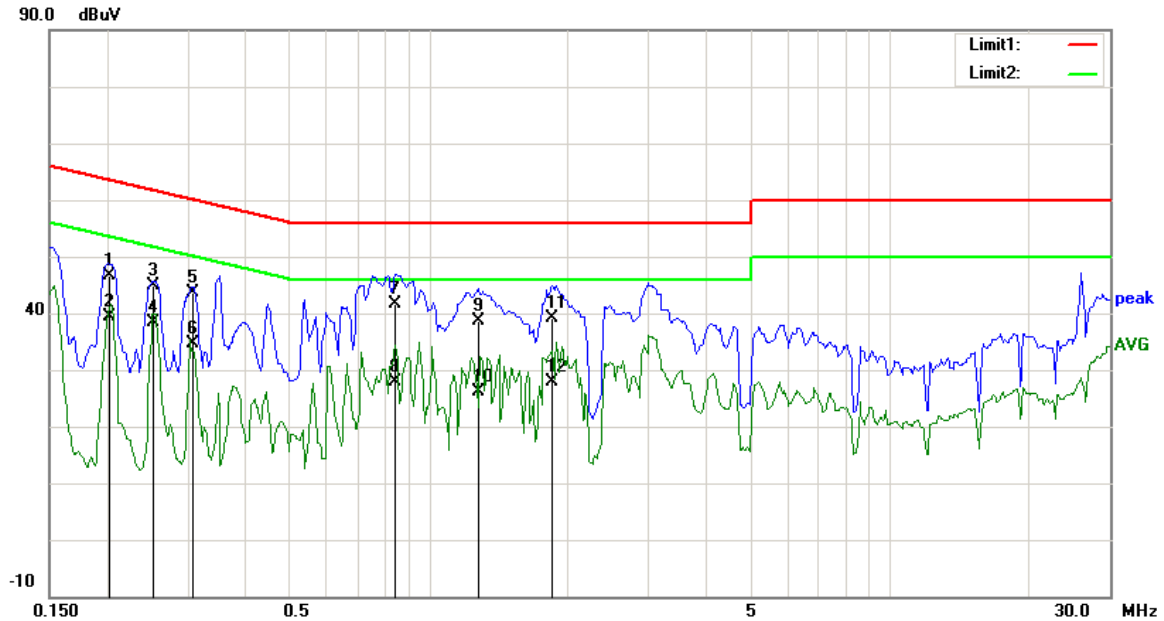


Test Data

Phase Line Plot at 120Vac, 60Hz

| No. | P/L | Frequency (MHz) | Reading (dBμV) | Detector | Corrected (dB) | Result (dBμV) | Limit (dBμV) | Margin (dB) | Comment) |
|-----|-----|-----------------|----------------|----------|----------------|---------------|--------------|-------------|----------|
| 1 | L1 | 0.2047 | 32.18 | QP | 13.00 | 45.18 | 63.42 | -18.24 | |
| 2 | L1 | 0.2047 | 19.38 | AVG | 13.00 | 32.38 | 53.42 | -21.04 | |
| 3 | L1 | 0.2535 | 30.59 | QP | 12.82 | 43.41 | 61.64 | -18.23 | |
| 4 | L1 | 0.2535 | 19.04 | AVG | 12.82 | 31.86 | 51.64 | -19.78 | |
| 5 | L1 | 0.3035 | 29.51 | QP | 12.63 | 42.14 | 60.15 | -18.01 | |
| 6 | L1 | 0.3035 | 17.00 | AVG | 12.63 | 29.63 | 50.15 | -20.52 | |
| 7 | L1 | 0.3531 | 30.19 | QP | 12.45 | 42.64 | 58.89 | -16.25 | |
| 8 | L1 | 0.3531 | 19.21 | AVG | 12.45 | 31.66 | 48.89 | -17.23 | |
| 9 | L1 | 0.4469 | 30.15 | QP | 12.10 | 42.25 | 56.93 | -14.68 | |
| 10 | L1 | 0.4469 | 13.73 | AVG | 12.10 | 25.83 | 46.93 | -21.10 | |
| 11 | L1 | 0.8045 | 29.32 | QP | 11.60 | 40.92 | 56.00 | -15.08 | |
| 12 | L1 | 0.8045 | 16.56 | AVG | 11.60 | 28.16 | 46.00 | -17.84 | |

Test Mode: Transmitting Mode



Test Data

Phase Neutral Plot at 120Vac, 60Hz

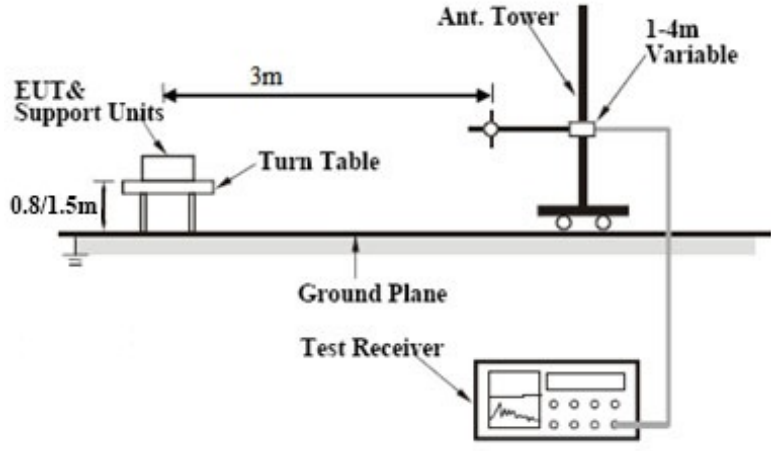
| No. | P/L | Frequency (MHz) | Reading (dBμV) | Detector | Corrected (dB) | Result (dBμV) | Limit (dBμV) | Margin (dB) | Comment) |
|-----|-----|-----------------|----------------|----------|----------------|---------------|--------------|-------------|----------|
| 1 | N | 0.2029 | 33.55 | QP | 13.00 | 46.55 | 63.49 | -16.94 | |
| 2 | N | 0.2029 | 26.33 | AVG | 13.00 | 39.33 | 53.49 | -14.16 | |
| 3 | N | 0.2521 | 32.14 | QP | 12.82 | 44.96 | 61.69 | -16.73 | |
| 4 | N | 0.2521 | 25.65 | AVG | 12.82 | 38.47 | 51.69 | -13.22 | |
| 5 | N | 0.3063 | 31.00 | QP | 12.62 | 43.62 | 60.07 | -16.45 | |
| 6 | N | 0.3063 | 21.99 | AVG | 12.62 | 34.61 | 50.07 | -15.46 | |
| 7 | N | 0.8453 | 30.09 | QP | 11.55 | 41.64 | 56.00 | -14.36 | |
| 8 | N | 0.8453 | 16.33 | AVG | 11.55 | 27.88 | 46.00 | -18.12 | |
| 9 | N | 1.2945 | 27.07 | QP | 11.44 | 38.51 | 56.00 | -17.49 | |
| 10 | N | 1.2945 | 14.70 | AVG | 11.44 | 26.14 | 46.00 | -19.86 | |
| 11 | N | 1.8492 | 27.61 | QP | 11.51 | 39.12 | 56.00 | -16.88 | |
| 12 | N | 1.8492 | 16.42 | AVG | 11.51 | 27.93 | 46.00 | -18.07 | |

6.7 Radiated Spurious Emissions

| | |
|----------------------|----------------|
| Temperature | 22°C |
| Relative Humidity | 57% |
| Atmospheric Pressure | 1018mbar |
| Test date : | March 17, 2015 |
| Tested By : | Wiki.Jam |

Requirement(s):

| Spec | Item | Requirement | Applicable | | | | | | | | | | |
|--------------------------------------|---|--|-----------------------|-----------------------|---------|-----|----------|-----|---------|-----|-----------|-----|--|
| 47CFR§15.247(d), RSS210 (A8.5) | a) | <div>Except higher limit as specified elsewhere in other section, the emissions from the low-power radio-frequency devices shall not exceed the field strength levels specified in the following table and the level of any unwanted emissions shall not exceed the level of the fundamental emission. The tighter limit applies at the band edges</div> <table><tr><th>Frequency range (MHz)</th><th>Field Strength (µV/m)</th></tr><tr><td>30 – 88</td><td>100</td></tr><tr><td>88 – 216</td><td>150</td></tr><tr><td>216 960</td><td>200</td></tr><tr><td>Above 960</td><td>500</td></tr></table> | Frequency range (MHz) | Field Strength (µV/m) | 30 – 88 | 100 | 88 – 216 | 150 | 216 960 | 200 | Above 960 | 500 | <div><input checked="" type="checkbox"/></div> |
| | Frequency range (MHz) | Field Strength (µV/m) | | | | | | | | | | | |
| | 30 – 88 | 100 | | | | | | | | | | | |
| | 88 – 216 | 150 | | | | | | | | | | | |
| 216 960 | 200 | | | | | | | | | | | | |
| Above 960 | 500 | | | | | | | | | | | | |
| b) | <div>For non-restricted band, In any 100 kHz bandwidth outside the frequency band in which the spread spectrum or digitally modulated intentional radiator is operating, the radio frequency power that is produced by the intentional radiator shall be at least 20 dB or 30dB below that in the 100 kHz bandwidth within the band that contains the highest level of the desired power, determined by the measurement method on output power to be used. Attenuation below the general limits specified in § 15.209(a) is not required</div> <div><input checked="" type="checkbox"/> 20 dB down <input type="checkbox"/> 30 dB down</div> | <div><input checked="" type="checkbox"/></div> | | | | | | | | | | | |
| c) | <div>or restricted band, emission must also comply with the radiated emission limits specified in 15.209</div> | <div><input checked="" type="checkbox"/></div> | | | | | | | | | | | |
| | | | | | | | | | | | | | |
| | | | | | | | | | | | | | |

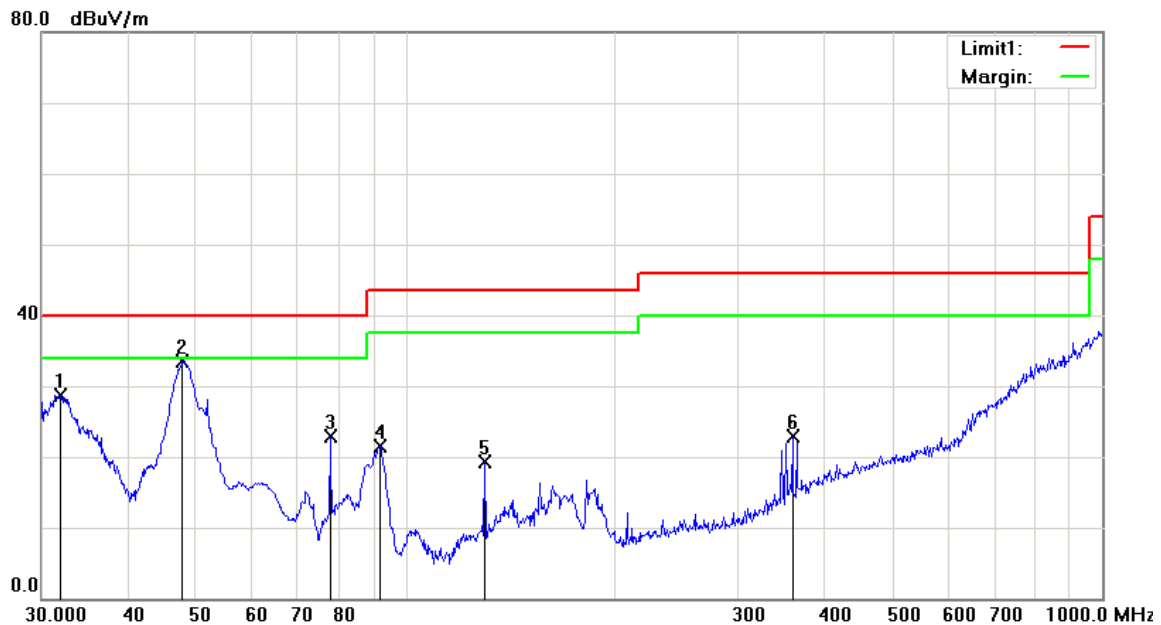
| | |
|------------|---|
| Test Setup |  |
| Procedure | <ol style="list-style-type: none"> The EUT was switched on and allowed to warm up to its normal operating condition. The test was carried out at the selected frequency points obtained from the EUT characterization. Maximization of the emissions, was carried out by rotating the EUT, changing the antenna polarization, and adjusting the antenna height in the following manner: <ol style="list-style-type: none"> Vertical or horizontal polarization (whichever gave the higher emission level over a full rotation of the EUT) was chosen. The EUT was then rotated to the direction that gave the maximum emission. Finally, the antenna height was adjusted to the height that gave the maximum emission. The resolution bandwidth and video bandwidth of test receiver/spectrum analyzer is 120 kHz for Quasi Peak detection at frequency below 1GHz. The resolution bandwidth of test receiver/spectrum analyzer is 1MHz and video bandwidth is 3MHz with Peak detection for Peak measurement at frequency above 1GHz. The resolution bandwidth of test receiver/spectrum analyzer is 1MHz and the video bandwidth is 10Hz with Peak detection for Average Measurement as below at frequency above 1GHz. Steps 2 and 3 were repeated for the next frequency point, until all selected frequency points were measured. |
| Remark | Different RF configuration has been evaluated but not much difference was found. The data presented here is the worst case data with EUT under 802.11n – HT20-2437MHz mode. |
| Result | <input checked="" type="checkbox"/> Pass <input type="checkbox"/> Fail |

Test Data ☒ Yes ☐ N/A

Test Plot ☒ Yes (See below) ☐ N/A

Test Mode: Transmitting Mode

Below 1GHz

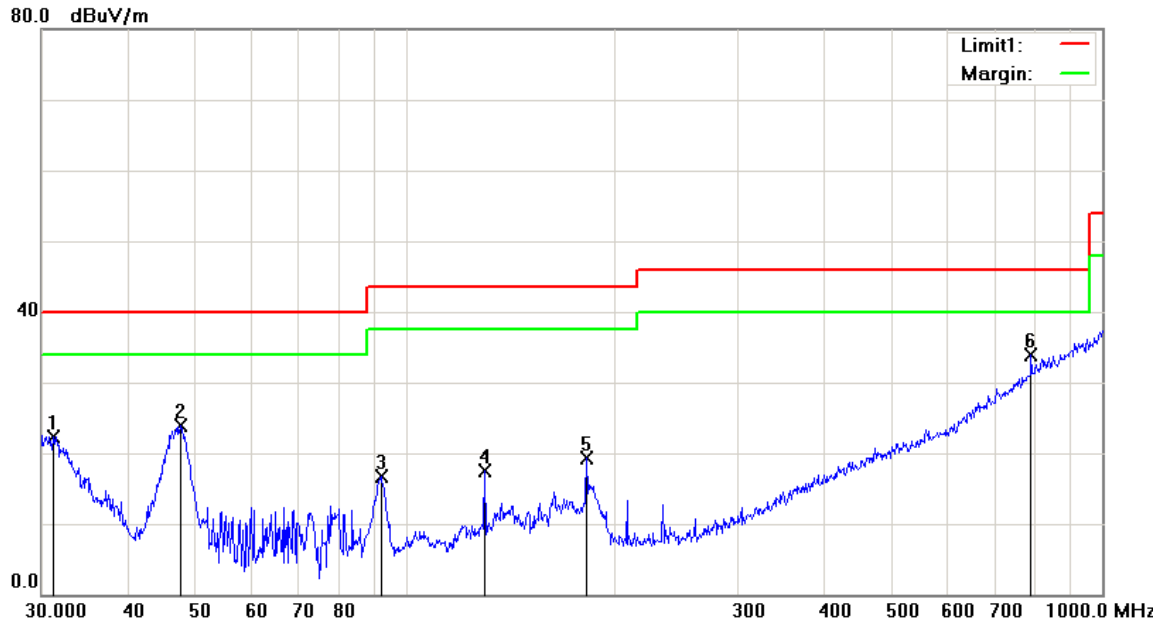


Test Data

Vertical Polarity Plot @3m

| No | P/L | Frequency (MHz) | Reading (dBμV) | Detector | Corrected (dB) | Result (dBμV) | Limit (dBμV) | Margin (dB) | Height | Degree | Comment |
|----|-----|-----------------|----------------|----------|----------------|---------------|--------------|-------------|--------|--------|---------|
| 1 | V | 31.9546 | 31.32 | peak | -2.58 | 28.74 | 40.00 | -11.26 | 100 | 120 | |
| 2 | V | 47.8260 | 46.52 | peak | -12.97 | 33.55 | 40.00 | -6.45 | 100 | 327 | |
| 3 | V | 77.8654 | 36.62 | peak | -13.76 | 22.86 | 40.00 | -17.14 | 100 | 150 | |
| 4 | V | 91.8163 | 35.07 | peak | -13.50 | 21.57 | 43.50 | -21.93 | 100 | 221 | |
| 5 | V | 129.9226 | 26.91 | peak | -7.53 | 19.38 | 43.50 | -24.12 | 100 | 120 | |
| 6 | V | 359.1860 | 27.81 | peak | -4.87 | 22.94 | 46.00 | -23.06 | 100 | 263 | |

Below 1GHz



Test Data

Horizontal Polarity Plot @3m

| No | P/L | Frequency (MHz) | Reading (dBμV) | Detector | Corrected (dB) | Result (dBμV) | Limit (dBμV) | Margin (dB) | Height | Degree | Comment |
|----|-----|-----------------|----------------|----------|----------------|---------------|--------------|-------------|--------|--------|---------|
| 1 | H | 31.1798 | 23.41 | peak | -1.13 | 22.28 | 40.00 | -17.72 | 100 | 150 | |
| 2 | H | 47.4918 | 30.65 | peak | -6.74 | 23.91 | 40.00 | -16.09 | 200 | 222 | |
| 3 | H | 92.1388 | 29.62 | peak | -12.84 | 16.78 | 43.50 | -26.72 | 200 | 184 | |
| 4 | H | 129.9226 | 25.51 | peak | -7.92 | 17.59 | 43.50 | -25.91 | 200 | 214 | |
| 5 | H | 181.9202 | 29.15 | peak | -9.76 | 19.39 | 43.50 | -24.11 | 200 | 263 | |
| 6 | H | 790.6188 | 30.75 | peak | 3.06 | 33.81 | 46.00 | -12.19 | 200 | 113 | |

| | |
|------------|-------------------|
| Test Mode: | Transmitting Mode |
|------------|-------------------|

Low Channel (2402 MHz)

| Frequency (MHz) | S.A. Reading (dBμV) | Detector (PK/AV) | Polarity (H/V) | Ant. Factor (dB/m) | Cable Loss (dB) | Pre-Amp. Gain (dB) | Cord. Amp. (dBμV/m) | Limit (dBμV/m) | Margin (dB) |
|-----------------|---------------------|------------------|----------------|--------------------|-----------------|--------------------|---------------------|----------------|-------------|
| 4804 | 36.78 | AV | V | 33.83 | 6.86 | 31.72 | 45.75 | 54 | -8.25 |
| 4804 | 37.51 | AV | H | 33.83 | 6.86 | 31.72 | 46.48 | 54 | -7.52 |
| 4804 | 47.85 | PK | V | 33.83 | 6.86 | 31.72 | 56.82 | 74 | -17.18 |
| 4804 | 48.64 | PK | H | 33.83 | 6.86 | 31.72 | 57.61 | 74 | -16.39 |

Middle Channel (2440 MHz)

| Frequency (MHz) | S.A. Reading (dBμV) | Detector (PK/AV) | Polarity (H/V) | Ant. Factor (dB/m) | Cable Loss (dB) | Pre-Amp. Gain (dB) | Cord. Amp. (dBμV/m) | Limit (dBμV/m) | Margin (dB) |
|-----------------|---------------------|------------------|----------------|--------------------|-----------------|--------------------|---------------------|----------------|-------------|
| 4880 | 38.23 | AV | V | 33.86 | 6.82 | 31.82 | 47.09 | 54 | -6.91 |
| 4880 | 39.2 | AV | H | 33.86 | 6.82 | 31.82 | 48.06 | 54 | -5.94 |
| 4880 | 47.93 | PK | V | 33.86 | 6.82 | 31.82 | 56.79 | 74 | -17.21 |
| 4880 | 48.25 | PK | H | 33.86 | 6.82 | 31.82 | 57.11 | 74 | -16.89 |

High Channel (2480 MHz)

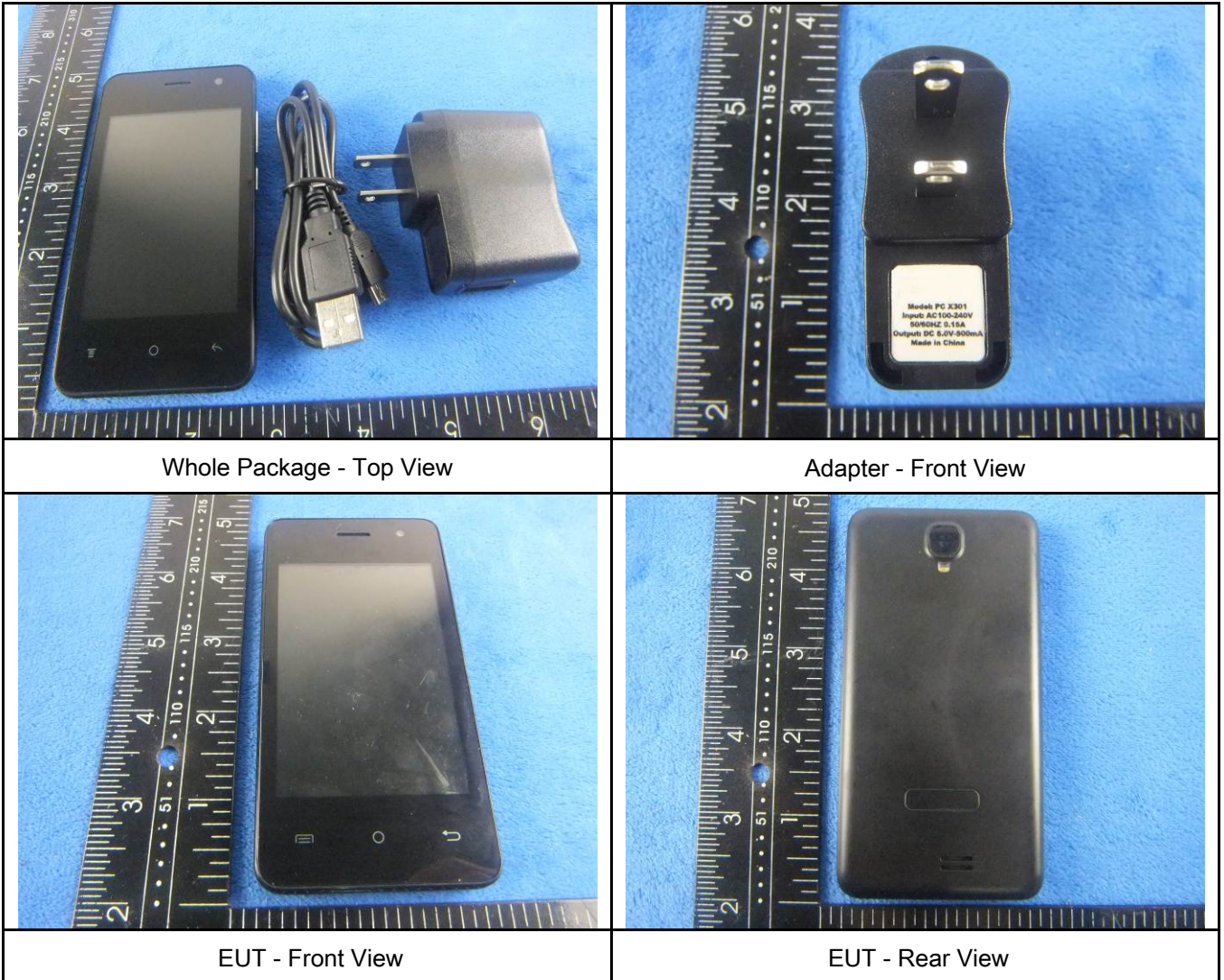
| Frequency (MHz) | S.A. Reading (dBμV) | Detector (PK/AV) | Polarity (H/V) | Ant. Factor (dB/m) | Cable Loss (dB) | Pre-Amp. Gain (dB) | Cord. Amp. (dBμV/m) | Limit (dBμV/m) | Margin (dB) |
|-----------------|---------------------|------------------|----------------|--------------------|-----------------|--------------------|---------------------|----------------|-------------|
| 4960 | 36.94 | AV | V | 33.9 | 6.76 | 31.92 | 45.68 | 54 | -8.32 |
| 4960 | 35.88 | AV | H | 33.9 | 6.76 | 31.92 | 44.62 | 54 | -9.38 |
| 4960 | 48.65 | PK | V | 33.9 | 6.76 | 31.92 | 57.39 | 74 | -16.61 |
| 4960 | 49.55 | PK | H | 33.9 | 6.76 | 31.92 | 58.29 | 74 | -15.71 |

Annex A. TEST INSTRUMENT

| Instrument | Model | Serial # | Cal Date | Cal Due | In use |
|---|----------|-------------|------------|------------|-------------------------------------|
| AC Line Conducted | | | | | |
| EMI test receiver | ESCS30 | 8471241027 | 09/18/2014 | 09/17/2015 | <input checked="" type="checkbox"/> |
| Line Impedance | LI-125A | 191106 | 09/26/2014 | 09/25/2015 | <input checked="" type="checkbox"/> |
| Line Impedance | LI-125A | 191107 | 09/26/2014 | 09/25/2015 | <input checked="" type="checkbox"/> |
| LISN | ISN T800 | 34373 | 09/26/2014 | 09/25/2015 | <input checked="" type="checkbox"/> |
| Double Ridge Horn Antenna (1 ~18GHz) | AH-118 | 71283 | 09/25/2014 | 09/24/2015 | <input checked="" type="checkbox"/> |
| Transient Limiter | LIT-153 | 531118 | 09/02/2014 | 09/01/2015 | <input checked="" type="checkbox"/> |
| RF conducted test | | | | | |
| Agilent ESA-E SERIES | E4407B | MY45108319 | 09/18/2014 | 09/17/2015 | <input checked="" type="checkbox"/> |
| Power Splitter | 1# | 1# | 09/02/2014 | 09/01/2015 | <input checked="" type="checkbox"/> |
| DC Power Supply | E3640A | MY40004013 | 09/18/2014 | 09/17/2015 | <input checked="" type="checkbox"/> |
| Radiated Emissions | | | | | |
| EMI test receiver | ESL6 | 100262 | 09/18/2014 | 09/17/2015 | <input checked="" type="checkbox"/> |
| Positioning Controller | UC3000 | MF780208282 | 11/20/2014 | 11/19/2015 | <input checked="" type="checkbox"/> |
| OPT 010 AMPLIFIER (0.1-1300MHz) | 8447E | 2727A02430 | 09/02/2014 | 09/01/2015 | <input checked="" type="checkbox"/> |
| Microwave Preamplifier (1 ~ 26.5GHz) | 8449B | 3008A02402 | 03/25/2015 | 03/24/2016 | <input checked="" type="checkbox"/> |
| Bilog Antenna (30MHz~6GHz) | JB6 | A110712 | 09/22/2014 | 09/21/2015 | <input checked="" type="checkbox"/> |
| Double Ridge Horn Antenna (1 ~18GHz) | AH-118 | 71283 | 09/25/2014 | 09/24/2015 | <input checked="" type="checkbox"/> |
| Universal Radio Communication Tester | CMU200 | 121393 | 09/26/2014 | 09/25/2015 | <input checked="" type="checkbox"/> |

Annex B. EUT And Test Setup Photographs

Annex B.i. Photograph: EUT External Photo





EUT - Top View



EUT - Bottom View



EUT - Left View



EUT - Right View

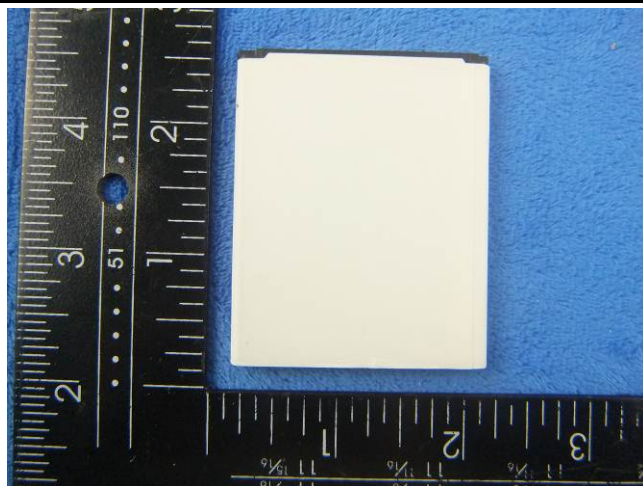
Annex B.ii. Photograph: EUT Internal Photo



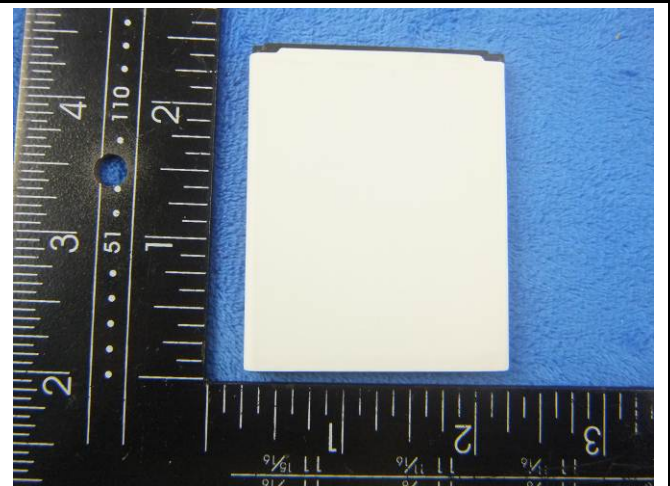
Cover Off - Top View 1



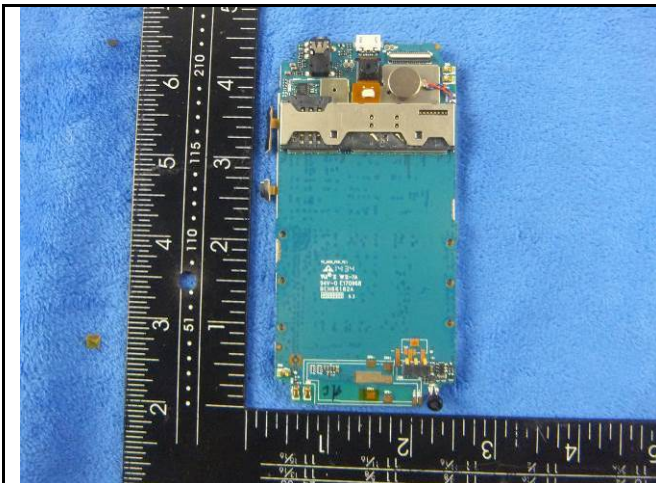
Cover Off - Top View 2



Battery - Top View



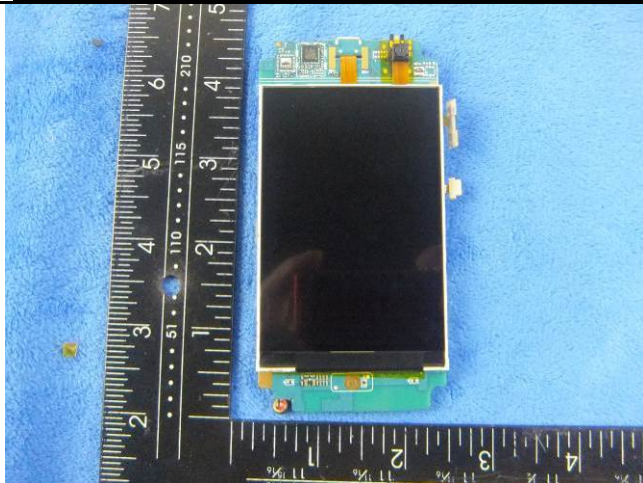
Battery - Bottom View



Mainboard With Shielding - Front View



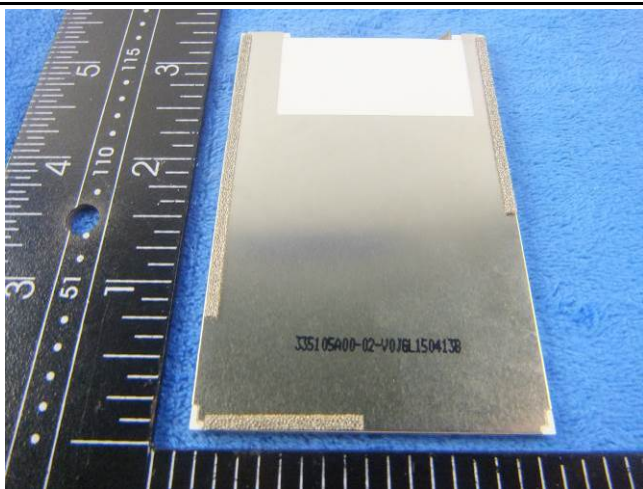
Mainboard Without Shielding - Front View



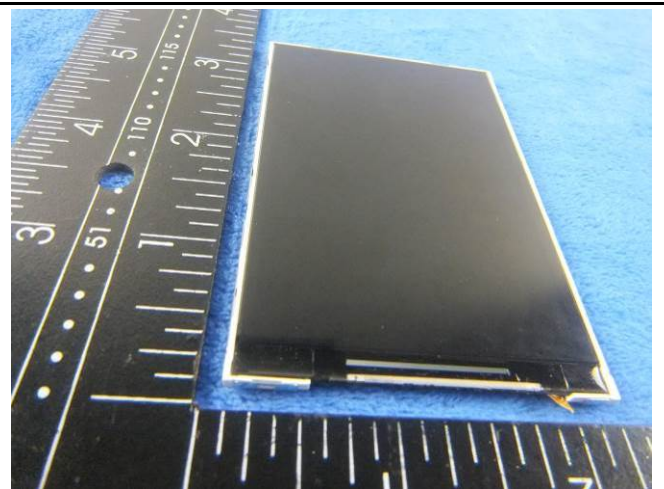
Mainboard With Shielding - rear View



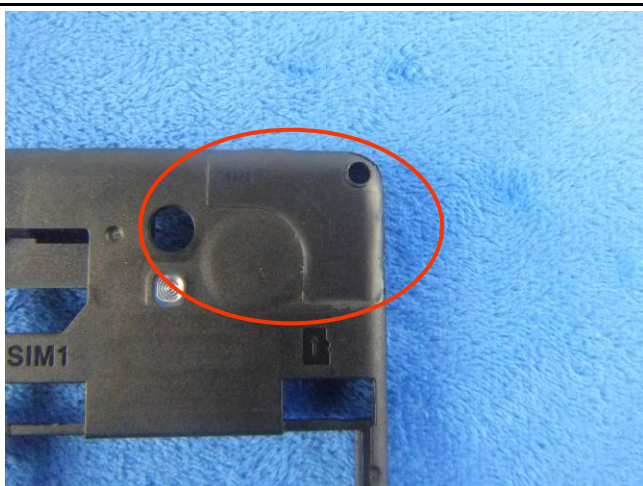
Mainboard Without Shielding - rear View



LCD - Rear View



LCD - Front View



WIFI/BT/BLE - Antenna View

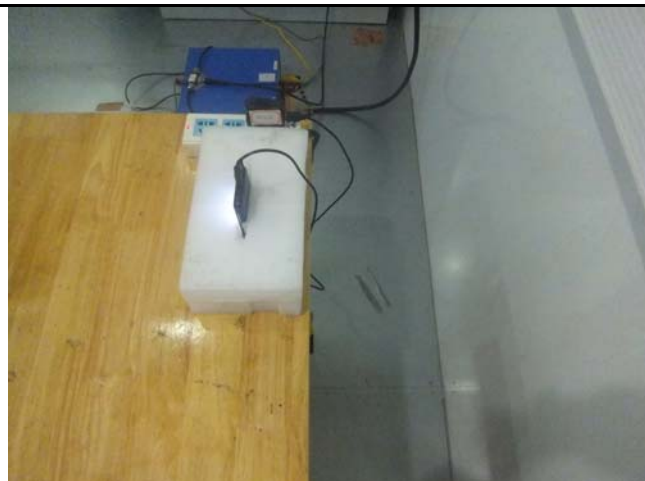


GSM/PCS/UMTS-FDD Antenna View

Annex B.iii. Photograph: Test Setup Photo



Conducted Emissions Test Setup Front View



Conducted Emissions Test Setup Side View



Radiated Spurious Emissions Test Setup Below 1GHz

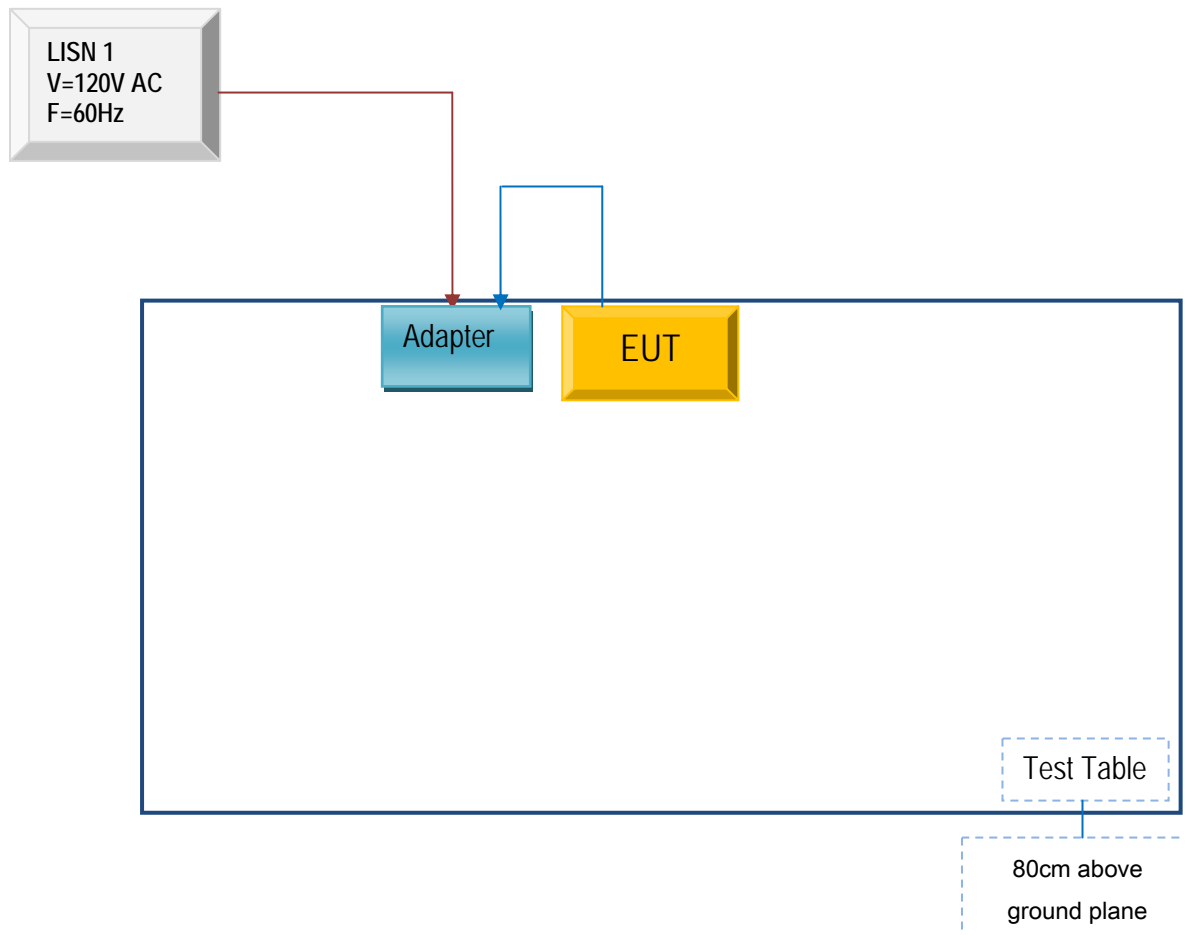


Radiated Spurious Emissions Test Setup Above
1GHz

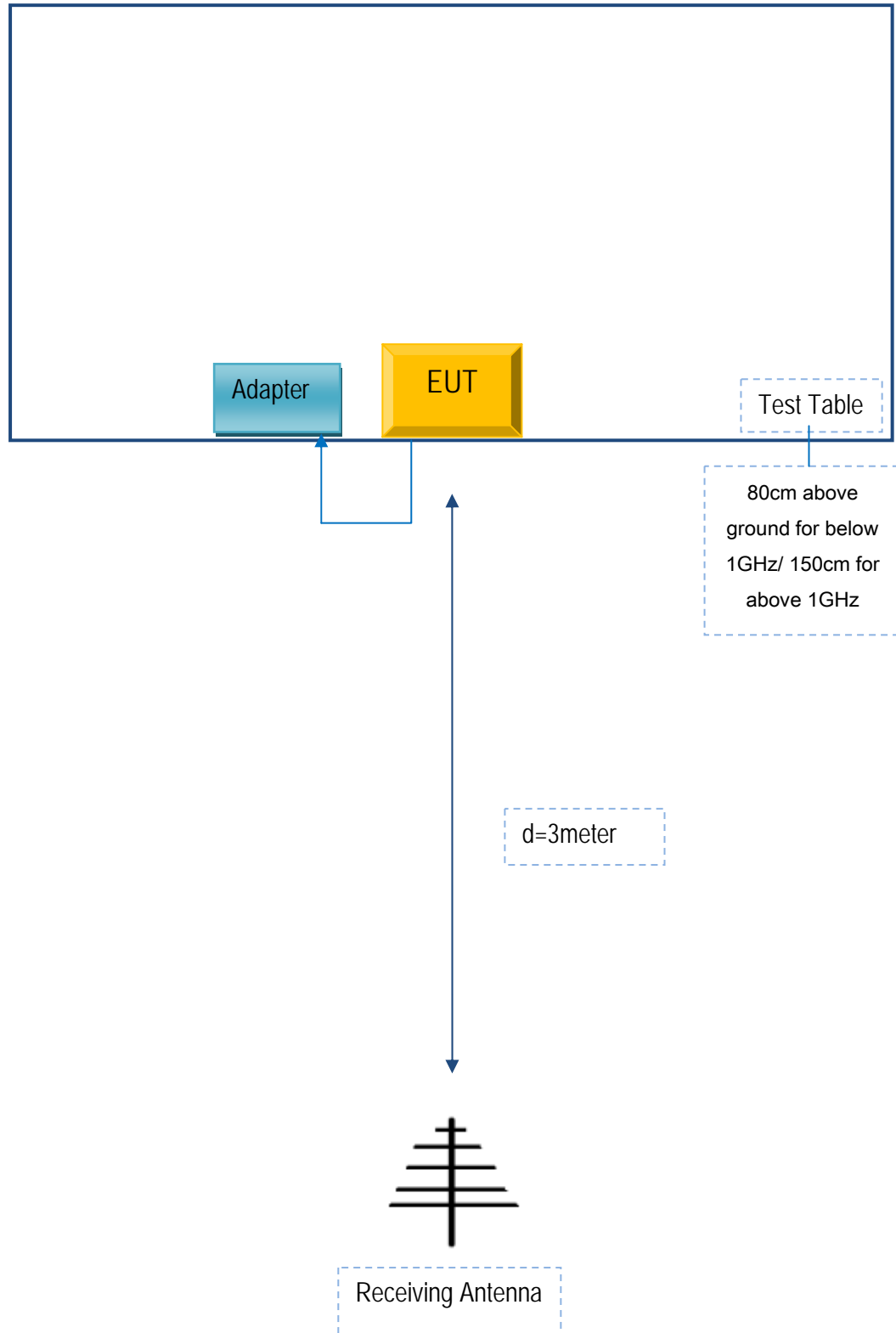
Annex C. TEST SETUP AND SUPPORTING EQUIPMENT

Annex C.ii. TEST SET UP BLOCK

Block Configuration Diagram for AC Line Conducted Emissions



Block Configuration Diagram for Radiated Emissions



| | |
|-----------------|-----------------|
| Test Report No. | 15070273-FCC-R4 |
| Page | 36 of 38 |

Annex C. ii. SUPPORTING EQUIPMENT DESCRIPTION

The following is a description of supporting equipment and details of cables used with the EUT.

| Manufacturer | Equipment Description | Model | Calibration Date | Calibration Due Date |
|---------------------|------------------------------|--------------|-------------------------|-----------------------------|
| N/A | N/A | N/A | N/A | N/A |

| | |
|-----------------|-----------------|
| Test Report No. | 15070273-FCC-R4 |
| Page | 37 of 38 |

Annex D. User Manual / Block Diagram / Schematics / Partlist

Please see attachment

Annex E. DECLARATION OF SIMILARITY

Social Mobile Telecommunications

To: SIEMIC ,775 Montague Expressway, Milpitas, CA 95035,USA

Declaration Letter

Dear Sir,

For our business issue and marketing requirement, we would like to list 2 model numbers on the FCC certificates and reports, as following:

Model No.: X301, Vapor

We declare that, all the model PCB ,Antenna and Appearance shape , accessories are the same . The difference of these is listed as below:

| Main Model No | Serial Model No | Difference |
|---------------|-----------------|----------------------|
| X301 | Vapor | Different model name |

Thank you!

Signature:

Printed name/title: Freddy Morcos / Manager
Address: 16400 NW 2nd Ave. #201 Miami, Florida 33169