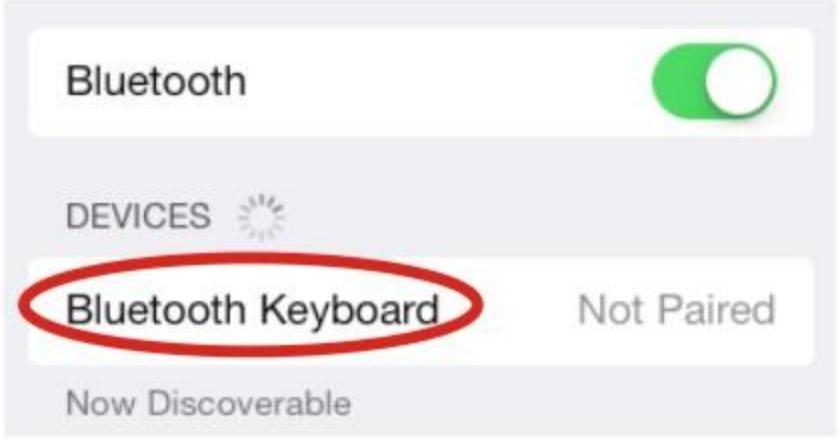


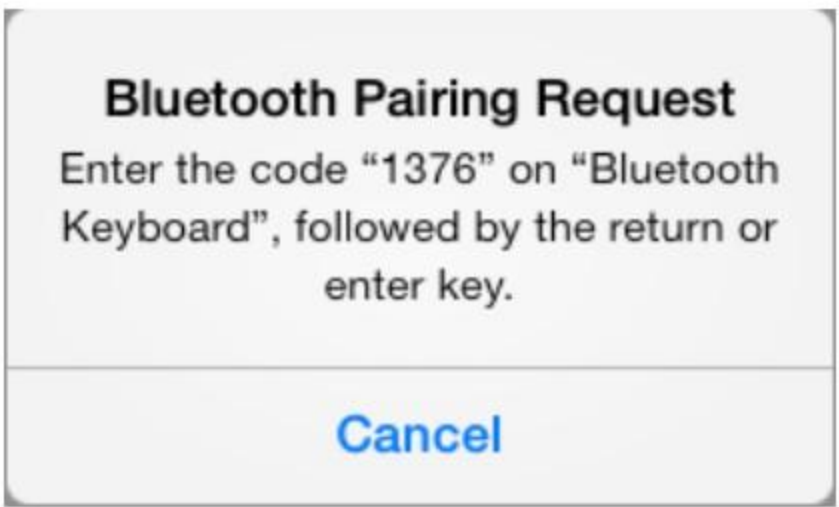
(2)



(3)



(4)



(5)



(6)

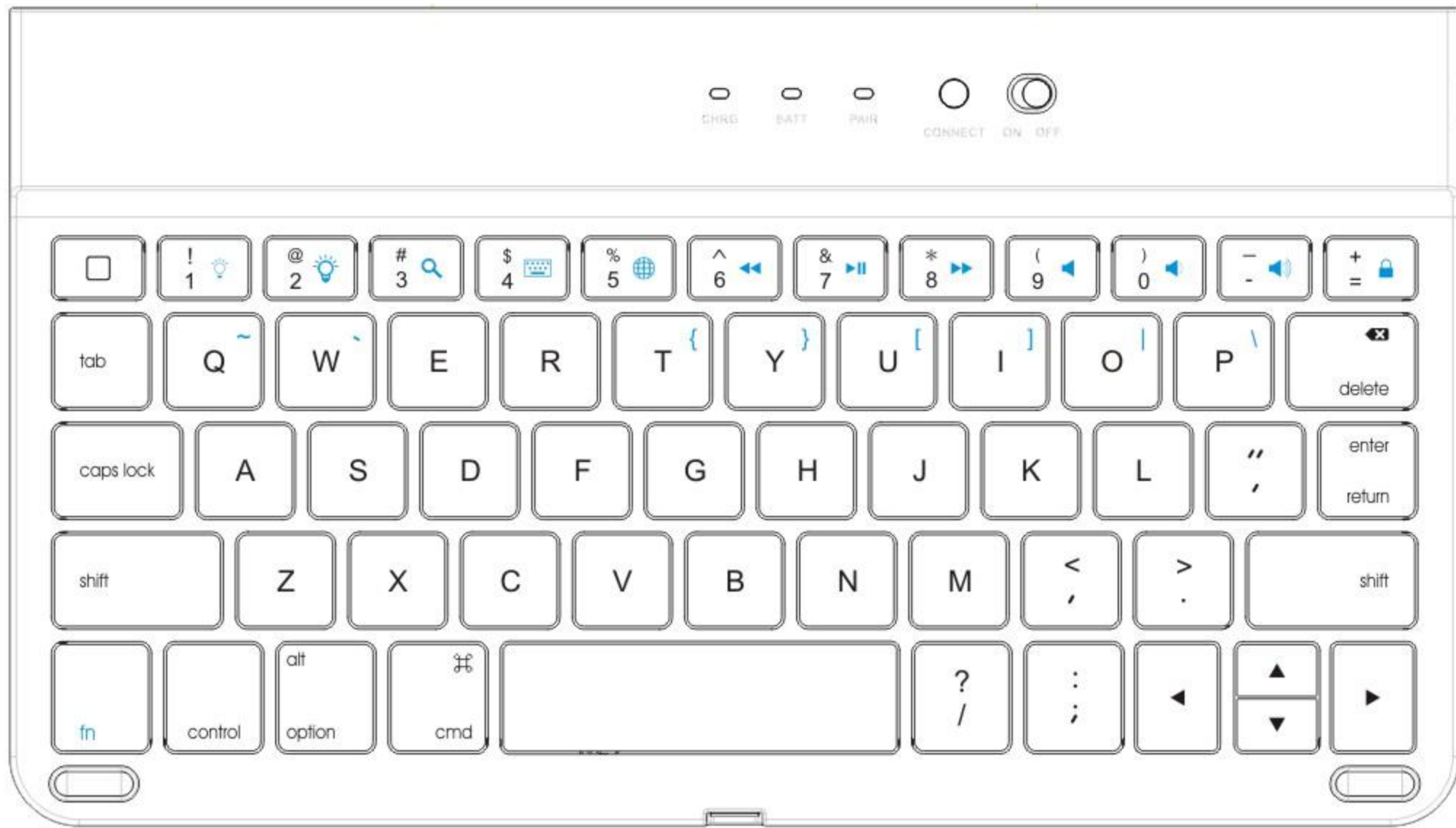
Product Specifications

- 1) Transmit Range: up to 10 meters
 - 2) Range of Frequency: 2. 4GHz Spectrum
 - 3) Operating Voltage: 3. 7Vdc(powered by Li-ion)
 - 4) Operation current: <5mA
 - 5) Standby current: 1. 0mA
 - 6) Sleep current: <0. 1mA
- This device complies with Part 15 of the FCC Rules:
Operation is subject to the following two conditions:
1. This device may not cause harmful interference and
2. This device must accept any interference that is received, including any interference that may cause undesired operation.

User Guide

Wireless Keyboard

MODEL:K661C,K661



NOTE:This device is keyboard only without any accessories.

Caution: To properly operate this product,please read the user manual thoroughly.

This equipment has been tested and found to comply with the limits for a Class B digital device, pursuant to part 15 of the FCC Rules. These limits are designed to provide reasonable protection against harmful interference in a residential installation. This equipment generates, uses and can radiate radio frequency energy and, if not installed and used in accordance with the instructions, may cause harmful interference to radio communications. However, there is no guarantee that interference will not occur in a particular installation. If this equipment does cause harmful interference to radio or television reception, which can be determined by turning the equipment off and on, the user is encouraged to try to correct the interference by one or more of the following measures:
-Reorient or relocate the receiving antenna.
-Increase the separation between the equipment and receiver.
-Connect the equipment to an outlet on a circuit different from that to which the receiver is connected.

Note: Modifications to this product will void the user' s authority to operate this equipment.

In order to comply with RF exposure requirements, a minimum distance of 5mm must be maintained between the antenna and all persons

the device cannot be co-located with any other device, except in accordance to FCC multi-transmitter RF Exposure procedures.



Overview

- Main screen/Esc
- Command
- Delete
- Brightness -
- Brightness +
- Search
- PrevTrack
- Play/pause
- NextTrack
- Mute
- Volume -
- Volume +
- Lock screen
- Virtual Keyboard
- Change Language
- Function

- fn-combination key, press FN key can input the blue characters above on the keyboard or control the blue keys.

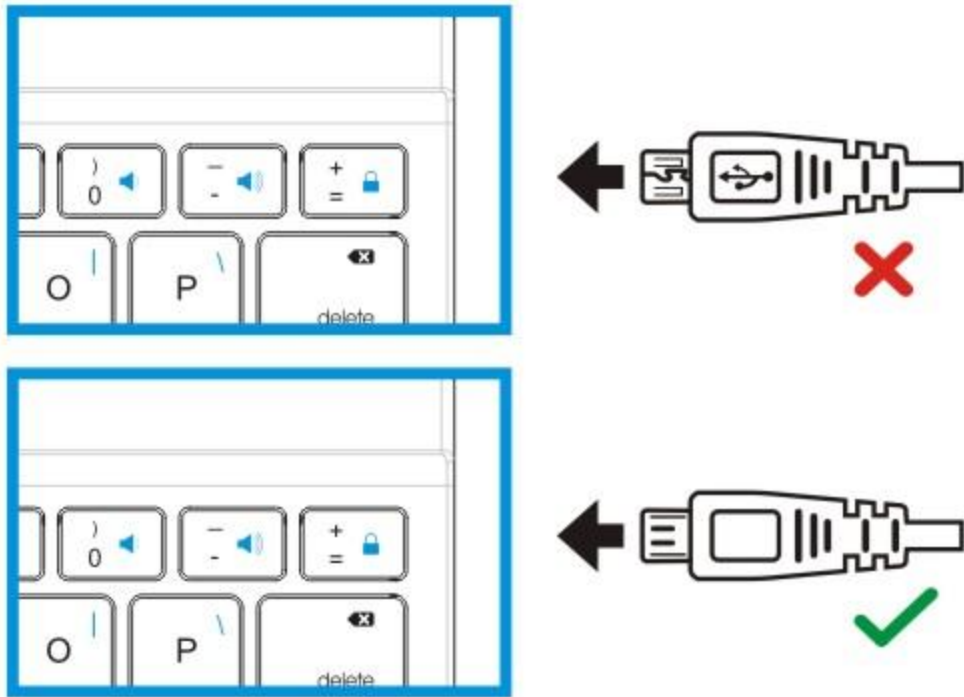
Meaning to LED light colors

Blue LED blinking: Pairing
Red LED on: Charging
Green LED on: Battery is fully charged
Green LED blinking: Low in Battery

Charging and pairing

Step 1: Recharging the keyboard

- The keyboard arrives partial charged
Before first use, charge the keyboard fully.
(Solid green LED)
- To charge the keyboard:
 - Locate micro-USB cable from the package or use your own.
 - Plug in the micro-USB (small tip) into the keyboard and the other end into a USB port.
(Recommend: 5V/1A input)



- After the first full charge, it should take at least 2 hours to recharge fully from low power.
- Step 2: Pairing your Bluetooth Keyboard to the Tablet PC Bluetooth-Enabled Device
Before you can use your keyboard with the PC, you must first pair the devices together via wireless Bluetooth. Fortunately, you only have to perform the pairing process once.
 - Enable Bluetooth in Tablet PC Settings.
 - Turn on the keyboard, press the "CONNECT" button (Blue BT will begin flashing)
 - From PC Bluetooth settings, "Bluetooth keyboard" will appear. Tap "Bluetooth keyboard" on the PC and a prompt message will appear on the PC screen asking to enter a passcode on the Bluetooth keyboard.
 - On the keyboard, type in the passcode and hit Enter.
 - Your PC should show that it is paired if successful.



(1)