

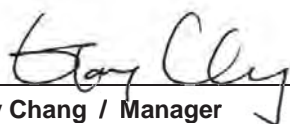
FCC SAR Test Report

Equipment : Canary Flex Home Security Device
Brand Name : Canary
Model No. : CAN600
FCC ID : 2ACDL-C600
Standard : FCC 47 CFR Part 2 (2.1093)
ANSI/IEEE C95.1-1992
IEEE 1528-2013
Applicant : Canary Connect, Inc.
606 West 28th Street, 7th Floor
New York NY 10001, USA

The product sample received on Aug. 18, 2016 and completely tested on Sep. 02 ~ Nov. 16, 2016. We, SPORTON INTERNATIONAL INC., would like to declare that the tested sample has been evaluated in accordance with the procedures and shown the compliance with the applicable technical standards.

The test results in this report apply exclusively to the tested model / sample. Without written approval of SPORTON INTERNATIONAL INC., the test report shall not be reproduced except in full.

Reviewed by:



Gary Chang / Manager





Table of Contents

| | | |
|-----------|---|-----------|
| 1 | STATEMENT OF COMPLIANCE | 5 |
| 1.1 | Guidance Standard | 5 |
| 1.2 | Testing Location Information | 5 |
| 2 | EQUIPMENT UNDER TEST (EUT) | 6 |
| 2.1 | General Information..... | 6 |
| 3 | RF EXPOSURE LIMITS..... | 7 |
| 3.1 | Uncontrolled Environment | 7 |
| 3.2 | Controlled Environment..... | 7 |
| 4 | SPECIFIC ABSORPTION RATE (SAR) | 8 |
| 4.1 | Introduction..... | 8 |
| 4.2 | SAR Definition | 8 |
| 5 | SYSTEM DESCRIPTION AND SETUP | 9 |
| 6 | MEASUREMENT PROCEDURES..... | 10 |
| 6.1 | Spatial Peak SAR Evaluation | 10 |
| 6.2 | Power Reference Measurement..... | 11 |
| 6.3 | Area Scan..... | 11 |
| 6.4 | Zoom Scan | 12 |
| 6.5 | Volume Scan Procedures..... | 12 |
| 6.6 | Power Drift Monitoring..... | 12 |
| 7 | TEST EQUIPMENT LIST | 13 |
| 8 | SYSTEM VERIFICATION | 14 |
| 8.1 | Tissue Verification | 14 |
| 8.2 | System Performance Check Results | 15 |
| 9 | RF EXPOSURE POSITIONS | 16 |
| 9.1 | SAR Testing Position | 16 |
| 10 | ANTENNA LOCATION AND SEPARATION DISTANCE | 17 |
| 11 | CONDUCTED RF OUTPUT POWER (UNIT: DBM)..... | 19 |
| 12 | SAR TEST RESULTS | 22 |
| 12.1 | Body SAR | 23 |
| 13 | UNCERTAINTY ASSESSMENT..... | 26 |
| 14 | REFERENCES | 29 |



APPENDIX A. PLOTS OF SYSTEM PERFORMANCE CHECK

APPENDIX B. PLOTS OF SAR MEASUREMENT

APPENDIX C. DASY CALIBRATION CERTIFICATE

APPENDIX D. TEST SETUP PHOTOS

Revision History

[illegible]

1 Statement of Compliance

The maximum results of Specific Absorption Rate (SAR) found during testing as follows.

| Exposure Position | Frequency Band | Reported 1g SAR (W/kg) | Equipment Class | Highest Reported 1g SAR (W/kg) |
|-------------------|-----------------|------------------------|-----------------|--------------------------------|
| Body | WLAN5.2GHz Band | 1.51 | NII | 1.51 |
| | WLAN5.8GHz Band | 1.51 | | |
| | WLAN2.4GHz Band | 1.47 | DTS | 1.47 |
| | Bluetooth | 0.00549 | DSS | 0.00549 |

This device is in compliance with Specific Absorption Rate (SAR) for general population/uncontrolled exposure limits (1.6 W/kg) specified in FCC 47 CFR part 2 (2.1093) and ANSI/IEEE C95.1-1992, and had been tested in accordance with the measurement methods and procedures specified in IEEE 1528-2013.

1.1 Guidance Standard

The Specific Absorption Rate (SAR) testing specification, method, and procedure for this device is in accordance with the following standards:

- FCC 47 CFR Part 2 (2.1093)
- ANSI/IEEE C95.1-1992
- IEEE 1528-2013
- FCC KDB 865664 D01 SAR Measurement 100 MHz to 6 GHz v01r04
- FCC KDB 865664 D02 RF Exposure Reporting v01r02
- FCC KDB 447498 D01 General RF Exposure Guidance v06
- FCC KDB 248227 D01 802.11 Wi-Fi SAR v02r02

1.2 Testing Location Information

| Testing Location | |
|------------------|--|
| Wen | ADD : No. 13-1, Ln. 19, Wen 33rd St., Kwei-Shan District, Tao Yuan City, Taiwan, R.O.C. TEL : 886-3-3180792 |

2 Equipment Under Test (EUT)

2.1 General Information

| Product Feature & Specification | |
|---------------------------------|---|
| Equipment Name | Canary Flex Home Security Device |
| Brand Name | Canary |
| Model Name | CAN600 |
| FCC ID | 2ACDL-C600 |
| Frequency Range | WLAN 2.4GHz: 2412MHz ~ 2462MHz WLAN 5.2GHz: 5180 MHz ~ 5240 MHz WLAN 5.8GHz: 5745 MHz ~ 5825 MHz Bluetooth: 2402MHz ~ 2480 MHz |
| EUT Stage | Identical Prototype |

| Specification of Accessory | | |
|----------------------------|--------------|--|
| Adapter 1 | Brand Name | canary |
| | Model Name | CAN100USAPT |
| | Power Rating | I/P: 100-240Vac, 50/60HZ, 0.3A O/P: 5Vdc, 2000mA |
| | Manufacturer | Vanze |
| Adapter 2 | Brand Name | canary |
| | Model Name | CAN100USAPT |
| | Power Rating | I/P: 100-240Vac, 50/60HZ, 0.35A O/P: 5Vdc, 2000mA |
| | Manufacturer | T&W |
| Battery | Brand Name | Sunwoda |
| | Model Name | SUN-INTE-16 |
| | Power Rating | 3350mAh |
| USB Cable (black) | Line | 2.41m, shielded, w/o core. |
| USB Cable (white) | Line | 2.41m, shielded, w/o core. |

3 RF Exposure Limits

3.1 Uncontrolled Environment

Uncontrolled Environments are defined as locations where there is the exposure of individuals who have no knowledge or control of their exposure. The general population/uncontrolled exposure limits are applicable to situations in which the general public may be exposed or in which persons who are exposed as a consequence of their employment may not be made fully aware of the potential for exposure or cannot exercise control over their exposure. Members of the general public would come under this category when exposure is not employment-related; for example, in the case of a wireless transmitter that exposes persons in its vicinity.

3.2 Controlled Environment

Controlled Environments are defined as locations where there is exposure that may be incurred by persons who are aware of the potential for exposure, (i.e. as a result of employment or occupation). In general, occupational/controlled exposure limits are applicable to situations in which persons are exposed as a consequence of their employment, who have been made fully aware of the potential for exposure and can exercise control over their exposure. The exposure category is also applicable when the exposure is of a transient nature due to incidental passage through a location where the exposure levels may be higher than the general population/uncontrolled limits, but the exposed person is fully aware of the potential for exposure and can exercise control over his or her exposure by leaving the area or by some other appropriate means.

Limits for Occupational/Controlled Exposure (W/kg)

| Whole-Body | Partial-Body | Hands, Wrists, Feet and Ankles |
|------------|--------------|--------------------------------|
| 0.4 | 8.0 | 20.0 |

Limits for General Population/Uncontrolled Exposure (W/kg)

| Whole-Body | Partial-Body | Hands, Wrists, Feet and Ankles |
|------------|--------------|--------------------------------|
| 0.08 | 1.6 | 4.0 |

1. Whole-Body SAR is averaged over the entire body, partial-body SAR is averaged over any 1gram of tissue defined as a tissue volume in the shape of a cube. SAR for hands, wrists, feet and ankles is averaged over any 10 grams of tissue defined as a tissue volume in the shape of a cube.

4 Specific Absorption Rate (SAR)

4.1 Introduction

SAR is related to the rate at which energy is absorbed per unit mass in an object exposed to a radio field. The SAR distribution in a biological body is complicated and is usually carried out by experimental techniques or numerical modeling. The standard recommends limits for two tiers of groups, occupational/controlled and general population/uncontrolled, based on a person's awareness and ability to exercise control over his or her exposure. In general, occupational/controlled exposure limits are higher than the limits for general population/uncontrolled.

4.2 SAR Definition

The SAR definition is the time derivative (rate) of the incremental energy (dW) absorbed by (dissipated in) an incremental mass (dm) contained in a volume element (dv) of a given density (ρ). The equation description is as below:

$$SAR = \frac{d}{dt} \left(\frac{dW}{dm} \right) = \frac{d}{dt} \left(\frac{dW}{\rho dv} \right)$$

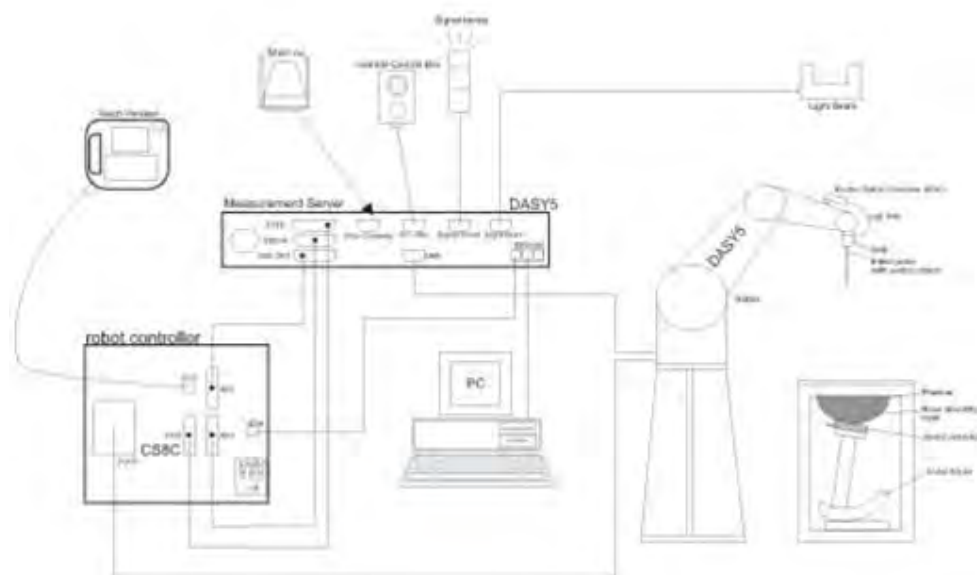
SAR is expressed in units of Watts per kilogram (W/kg)

$$SAR = \frac{\sigma |E|^2}{\rho}$$

Where: σ is the conductivity of the tissue, ρ is the mass density of the tissue and E is the RMS electrical field strength.

5 System Description and Setup

The DASY system used for performing compliance tests consists of the following items:



- A standard high precision 6-axis robot with controller, teach pendant and software. An arm extension for accommodating the data acquisition electronics (DAE).
- An isotropic Field probe optimized and calibrated for the targeted measurement.
- A data acquisition electronics (DAE) which performs the signal amplification, signal multiplexing, AD-conversion, offset measurements, mechanical surface detection, collision detection, etc. The unit is battery powered with standard or rechargeable batteries. The signal is optically transmitted to the EOC.
- The Electro-optical converter (EOC) performs the conversion from optical to electrical signals for the digital communication to the DAE. To use optical surface detection, a special version of the EOC is required. The EOC signal is transmitted to the measurement server.
- The function of the measurement server is to perform the time critical tasks such as signal filtering, control of the robot operation and fast movement interrupts.
- The Light Beam used is for probe alignment. This improves the (absolute) accuracy of the probe positioning.
- A computer running WinXP or Win7 and the DASY5 software.
- Remote control and teach pendant as well as additional circuitry for robot safety such as warning lamps, etc.
- The phantom, the device holder and other accessories according to the targeted measurement.

6 Measurement Procedures

The measurement procedures are as follows:

<Conducted power measurement>

- (a) For WWAN power measurement, use base station simulator to configure EUT WWAN transmission in conducted connection with RF cable, at maximum power in each supported wireless interface and frequency band.
- (b) Read the WWAN RF power level from the base station simulator.
- (c) For WLAN/BT power measurement, use engineering software to configure EUT WLAN/BT continuously transmission, at maximum RF power in each supported wireless interface and frequency band
- (d) Connect EUT RF port through RF cable to the power meter, and measure WLAN/BT output power

<SAR measurement>

- (a) Use base station simulator to configure EUT WWAN transmission in radiated connection, and engineering software to configure EUT WLAN/BT continuously transmission, at maximum RF power, in the highest power channel.
- (b) Place the EUT in the positions as Appendix D demonstrates.
- (c) Set scan area, grid size and other setting on the DASY software.
- (d) Measure SAR results for the highest power channel on each testing position.
- (e) Find out the largest SAR result on these testing positions of each band
- (f) Measure SAR results for other channels in worst SAR testing position if the reported SAR of highest power channel is larger than 0.8 W/kg

According to the test standard, the recommended procedure for assessing the peak spatial-average SAR value consists of the following steps:

- (a) Power reference measurement
- (b) Area scan
- (c) Zoom scan
- (d) Power drift measurement

6.1 Spatial Peak SAR Evaluation

The procedure for spatial peak SAR evaluation has been implemented according to the test standard. It can be conducted for 1g and 10g, as well as for user-specific masses. The DASY software includes all numerical procedures necessary to evaluate the spatial peak SAR value.

The base for the evaluation is a "cube" measurement. The measured volume must include the 1g and 10g cubes with the highest averaged SAR values. For that purpose, the center of the measured volume is aligned to the interpolated peak SAR value of a previously performed area scan.

The entire evaluation of the spatial peak values is performed within the post-processing engine (SEMCAD). The system always gives the maximum values for the 1g and 10g cubes. The algorithm to find the cube with highest averaged SAR is divided into the following stages:

- (a) Extraction of the measured data (grid and values) from the Zoom Scan
- (g) Calculation of the SAR value at every measurement point based on all stored data (A/D values and measurement parameters)
- (b) Generation of a high-resolution mesh within the measured volume
- (c) Interpolation of all measured values form the measurement grid to the high-resolution grid
- (d) Extrapolation of the entire 3-D field distribution to the phantom surface over the distance from sensor to surface
- (e) Calculation of the averaged SAR within masses of 1g and 10g

6.2 Power Reference Measurement

The Power Reference Measurement and Power Drift Measurements are for monitoring the power drift of the device under test in the batch process. The minimum distance of probe sensors to surface determines the closest measurement point to phantom surface. This distance cannot be smaller than the distance of sensor calibration points to probe tip as defined in the probe properties.

6.3 Area Scan

The area scan is used as a fast scan in two dimensions to find the area of high field values, before doing a fine measurement around the hot spot. The sophisticated interpolation routines implemented in DASY software can find the maximum found in the scanned area, within a range of the global maximum. The range (in dB) is specified in the standards for compliance testing. For example, a 2 dB range is required in IEEE standard 1528 and IEC 62209 standards, whereby 3 dB is a requirement when compliance is assessed in accordance with the ARIB standard (Japan), if only one zoom scan follows the area scan, then only the absolute maximum will be taken as reference. For cases where multiple maximums are detected, the number of zoom scans has to be increased accordingly.

Area scan parameters extracted from FCC KDB 865664 D01v01r03 SAR measurement 100 MHz to 6 GHz v01r01.

| | ≤ 3 GHz | > 3 GHz |
|--|--|--|
| Maximum distance from closest measurement point (geometric center of probe sensors) to phantom surface | 5 ± 1 mm | $\frac{1}{2} \cdot \delta \cdot \ln(2) \pm 0.5$ mm |
| Maximum probe angle from probe axis to phantom surface normal at the measurement location | $30^\circ \pm 1^\circ$ | $20^\circ \pm 1^\circ$ |
| Maximum area scan spatial resolution: Δx_{Area} , Δy_{Area} | ≤ 2 GHz: ≤ 15 mm $2 - 3$ GHz: ≤ 12 mm | $3 - 4$ GHz: ≤ 12 mm $4 - 6$ GHz: ≤ 10 mm |
| | When the x or y dimension of the test device, in the measurement plane orientation, is smaller than the above, the measurement resolution must be \leq the corresponding x or y dimension of the test device with at least one measurement point on the test device. | |

6.4 Zoom Scan

Zoom scans are used to assess the peak spatial SAR values within a cubic averaging volume containing 1 gram and 10 gram of simulated tissue. The zoom scan measures points (refer to table below) within a cube whose base faces are centered on the maxima found in a preceding area scan job within the same procedure. When the measurement is done, the zoom scan evaluates the averaged SAR for 1 gram and 10 gram and displays these values next to the job's label.

Zoom scan parameters extracted from FCC KDB 865664 D01v01r03 SAR measurement 100 MHz to 6 GHz v01r01.

| | | | ≤ 3 GHz | > 3 GHz |
|---|---|---|--|---|
| Maximum zoom scan spatial resolution: $\Delta x_{\text{Zoom}}, \Delta y_{\text{Zoom}}$ | | | ≤ 2 GHz: ≤ 8 mm 2 – 3 GHz: ≤ 5 mm* | 3 – 4 GHz: ≤ 5 mm* 4 – 6 GHz: ≤ 4 mm* |
| Maximum zoom scan spatial resolution, normal to phantom surface | uniform grid: $\Delta z_{\text{Zoom}}(n)$ | | ≤ 5 mm | 3 – 4 GHz: ≤ 4 mm 4 – 5 GHz: ≤ 3 mm 5 – 6 GHz: ≤ 2 mm |
| | graded grid | $\Delta z_{\text{Zoom}}(1)$: between 1 st two points closest to phantom surface | ≤ 4 mm | 3 – 4 GHz: ≤ 3 mm 4 – 5 GHz: ≤ 2.5 mm 5 – 6 GHz: ≤ 2 mm |
| | | $\Delta z_{\text{Zoom}}(n>1)$: between subsequent points | $\leq 1.5 \cdot \Delta z_{\text{Zoom}}(n-1)$ | |
| Minimum zoom scan volume | x, y, z | | ≥ 30 mm | 3 – 4 GHz: ≥ 28 mm 4 – 5 GHz: ≥ 25 mm 5 – 6 GHz: ≥ 22 mm |
| Note: δ is the penetration depth of a plane-wave at normal incidence to the tissue medium; see draft standard IEEE P1528-2011 for details. | | | | |
| * When zoom scan is required and the <i>reported</i> SAR from the <i>area scan based 1-g SAR estimation</i> procedures of KDB 447498 is ≤ 1.4 W/kg, ≤ 8 mm, ≤ 7 mm and ≤ 5 mm zoom scan resolution may be applied, respectively, for 2 GHz to 3 GHz, 3 GHz to 4 GHz and 4 GHz to 6 GHz. | | | | |

6.5 Volume Scan Procedures

The volume scan is used to assess overlapping SAR distributions for antennas transmitting in different frequency bands. It is equivalent to an oversized zoom scan used in standalone measurements. The measurement volume will be used to enclose all the simultaneous transmitting antennas. For antennas transmitting simultaneously in different frequency bands, the volume scan is measured separately in each frequency band. In order to sum correctly to compute the 1g aggregate SAR, the EUT remain in the same test position for all measurements and all volume scan use the same spatial resolution and grid spacing. When all volume scan were completed, the software, SEMCAD postprocessor can combine and subsequently superpose these measurement data to calculating the multiband SAR.

6.6 Power Drift Monitoring

All SAR testing is under the EUT install full charged battery and transmit maximum output power. In DASY measurement software, the power reference measurement and power drift measurement procedures are used for monitoring the power drift of EUT during SAR test. Both these procedures measure the field at a specified reference position before and after the SAR testing. The software will calculate the field difference in dB. If the power drifts more than 5%, the SAR will be retested.

7 Test Equipment List

| Manufacturer | Name of Equipment | Type/Model | Serial Number | Calibration | |
|---------------|----------------------------------|---------------|---------------|-------------|------------|
| | | | | Last Cal. | Due Date |
| SPEAG | Data Acquisition Electronics | DAE4 | 1424 | 2016/2/16 | 2017/2/15 |
| SPEAG | Dosimetric E-Field Probe | EX3DV4 | 3976 | 2016/2/22 | 2017/2/21 |
| SPEAG | 2450MHz System Validation Kit | D2450V2 | 929 | 2016/2/9 | 2017/2/8 |
| SPEAG | 5000MHz System Validation Kit | D5GHzV2 | 1171 | 2016/2/17 | 2017/2/16 |
| SPEAG | Device Holder | N/A | N/A | NCR | NCR |
| Mini-Circuits | Power Amplifier | ZHL-42W+ | 15542 | NCR | NCR |
| Mini-Circuits | Power Amplifier | ZVE-8G+ | 605601404 | NCR | NCR |
| Agilent | ENA Series Network Analyzer | E5071C | MY46419201 | 2016/1/21 | 2017/1/20 |
| Agilent | EXA Signal Analyzer | N9010A | MY54200432 | 2016/8/22 | 2017/8/21 |
| Keysight | MXG-B RF Vector Signal Generator | N5182B | MY53050081 | 2016/4/1 | 2017/3/31 |
| SPEAG | Dielectric Probe Kit | SM DAK 040CA | 1146 | NCR | NCR |
| Anritsu | Power Meter | ML2495A | 1124009 | 2016/2/22 | 2017/2/21 |
| Anritsu | Power sensor | MA2411B | 1027452 | 2016/2/22 | 2017/2/21 |
| Anritsu | Power Meter | ML2495A | 0949003 | 2016/2/4 | 2017/2/3 |
| Anritsu | Power sensor | MA2411B | 0917017 | 2016/2/4 | 2017/2/3 |
| SPEAG | SAM Phantom | QD 000 P40 CD | 1815 | NCR | NCR |
| SPEAG | Flat Phantom ELI5.0 | QD OVA 002 AA | 1238 | NCR | NCR |
| Wisewind | Thermometer | HTC1 | HTC1 | 2015/12/24 | 2016/12/23 |
| Wisewind | Thermometer | YF-160A | 130504609 | 2015/12/24 | 2016/12/23 |

General Note:

1. The calibration certificate of DASY can be referred to appendix C of this report.
2. The Insertion Loss calibration of Dual Directional Coupler and Attenuator were characterized via the network analyzer and compensated during system check.
3. In system check we need to monitor the level on the power meter, and adjust the power amplifier level to have precise power level to the dipole; the measured SAR will be normalized to 1W input power according to the ratio of 1W to the input power to the dipole. For system check, the calibration of the power amplifier is deemed not critically required for correct measurement; the power meter is critical and we do have calibration for it
4. Attenuator 1 insertion loss is calibrated by the network Analyzer, which the calibration is valid, before system check.
5. NCR: No calibration request.

8 System Verification

8.1 Tissue Verification

The following tissue formulations are provided for reference only as some of the parameters have not been thoroughly verified. The composition of ingredients may be modified accordingly to achieve the desired target tissue parameters required for routine SAR evaluation.

Simulating Liquid for 5GHz, Manufactured by SPEAG

| Ingredients | (% by weight) |
|--------------------|---------------|
| Water | 64~78% |
| Mineral oil | 11~18% |
| Emulsifiers | 9~15% |
| Additives and Salt | 2~3% |

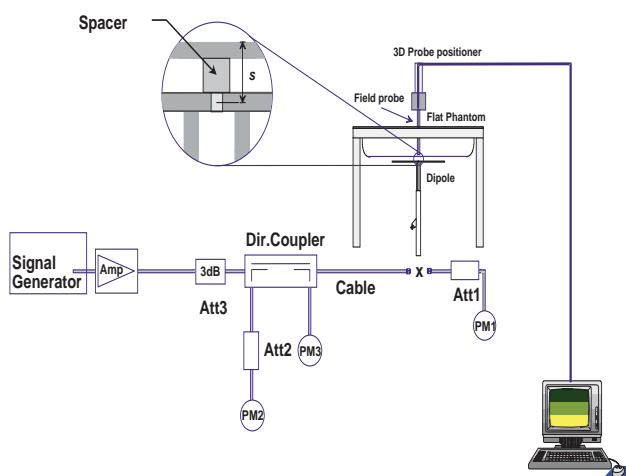
<Tissue Dielectric Parameter Check Results>

| Frequency (MHz) | Liquid Temp. (°C) | Conductivity (σ) | Permittivity (ϵ_r) | Conductivity Target (σ) | Permittivity Target (ϵ_r) | Delta (σ) (%) | Delta (ϵ_r) (%) | Limit (%) | Date |
|-----------------|-------------------|---------------------------|-------------------------------|----------------------------------|--------------------------------------|------------------------|----------------------------|-----------|------------|
| 2450 | 22.5 | 1.932 | 52.419 | 1.95 | 52.7 | -0.92 | -0.53 | ±5 | 2016/9/2 |
| 2450 | 22.5 | 1.923 | 52.369 | 1.95 | 52.7 | -1.38 | -0.63 | ±5 | 2016/9/5 |
| 2450 | 22.5 | 1.934 | 52.226 | 1.95 | 52.7 | -0.82 | -0.90 | ±5 | 2016/11/16 |
| 5200 | 22.5 | 5.097 | 49.229 | 5.3 | 49 | -3.83 | 0.47 | ±5 | 2016/9/19 |
| 5200 | 22.5 | 5.186 | 48.039 | 5.3 | 49 | -2.15 | -1.96 | ±5 | 2016/11/15 |
| 5800 | 22.5 | 5.957 | 47.101 | 6 | 48.2 | -0.72 | -2.28 | ±5 | 2016/9/19 |
| 5800 | 22.5 | 5.957 | 47.101 | 6 | 48.2 | -0.72 | -2.28 | ±5 | 2016/11/16 |

8.2 System Performance Check Results

Comparing to the original SAR value provided by SPEAG, the verification data should be within its specification of 10 %. Below table shows the target SAR and measured SAR after normalized to 1W input power. The table below indicates the system performance check can meet the variation criterion and the plots can be referred to Appendix A of this report.

| Date | Frequency (MHz) | Tissue Type | Input Power (mW) | Dipole S/N | Probe S/N | DAE S/N | Measured SAR (W/kg) | Targeted SAR (W/kg) | Normalized SAR (W/kg) | Deviation (%) |
|------------|-----------------|-------------|------------------|------------|-----------|---------|---------------------|---------------------|-----------------------|---------------|
| 2016/9/2 | 2450 | Body | 250 | 929 | 3976 | 1424 | 12.7 | 49.8 | 50.80 | 2.008 |
| 2016/9/5 | 2450 | Body | 250 | 929 | 3976 | 1424 | 12.9 | 49.8 | 51.60 | 3.614 |
| 2016/11/16 | 2450 | Body | 250 | 929 | 3976 | 1424 | 12.7 | 49.8 | 50.80 | 2.008 |
| 2016/9/19 | 5200 | Body | 100 | 1171 | 3976 | 1424 | 7.35 | 73.6 | 73.50 | -0.136 |
| 2016/11/15 | 5200 | Body | 100 | 1171 | 3976 | 1424 | 7.09 | 73.6 | 70.90 | -3.668 |
| 2016/9/19 | 5800 | Body | 100 | 1171 | 3976 | 1424 | 7.19 | 75.6 | 71.90 | -4.894 |
| 2016/11/16 | 5800 | Body | 100 | 1171 | 3976 | 1424 | 7.19 | 75.6 | 71.90 | -4.894 |



System Performance Check Setup



Setup Photo

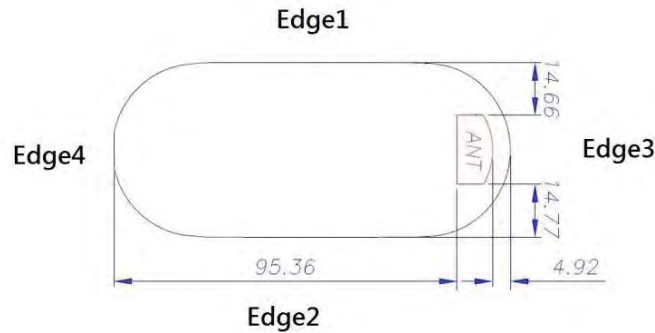


9 RF Exposure Positions

9.1 SAR Testing Position

Please refer to Appendix D. for the test setup photos.

10 Antenna Location and Separation Distance



General Note:

1. The below table, when the distance is < 50 mm exclusion threshold is "Ratio", when the distance is > 50 mm exclusion threshold is "mW"
2. Maximum power is the source-based time-average power and represents the maximum RF output power among production units
3. Per KDB 447498 D01v06, for larger devices, the test separation distance of adjacent edge configuration is determined by the closest separation between the antenna and the user.
4. Per KDB 447498 D01v06, standalone SAR test exclusion threshold is applied; If the test separation distance is < 5mm, 5mm is used to determine SAR exclusion threshold.
5. Per KDB 447498 D01v06, the 1-g and 10-g SAR test exclusion thresholds for 100 MHz to 6 GHz at test separation distances ≤ 50 mm are determined by:

$$[(\text{max. power of channel, including tune-up tolerance, mW}) / (\text{min. test separation distance, mm})] \cdot [\sqrt{f(\text{GHz})}] \leq 3.0$$
for 1-g SAR and ≤ 7.5 for 10-g extremity SAR
 $f(\text{GHz})$ is the RF channel transmit frequency in GHz
Power and distance are rounded to the nearest mW and mm before calculation
The result is rounded to one decimal place for comparison
6. Per KDB 447498 D01v06, at 100 MHz to 6 GHz and for test separation distances > 50 mm, the SAR test exclusion threshold is determined according to the following
 - a) [Threshold at 50 mm in step 1) + (test separation distance - 50 mm) · (f(MHz)/150)] mW, at 100 MHz to 1500 MHz
 - b) [Threshold at 50 mm in step 1) + (test separation distance - 50 mm) · 10] mW at > 1500 MHz and ≤ 6 GHz
7. For the bottom-face that proximity sensor power reduction is applied for SAR compliance, additional SAR testing at "sensor trigger distance – 1mm" with EUT transmitting full power in normal mode was performed.



| | | | | | | | |
|-----------------------|-------------------------|----------------------|-------------|----------------------|-------------|----------------------|-------------|
| Frequency Band(MHz) | | 2400~2483.5MHz | | 5150~5250MHz | | 5725~5850MHz | |
| Calculated Freq.(MHz) | | 2437 | | 5230 | | 5795 | |
| Tune-up power(dBm) | | 20.00 | | 13 | | 10.5 | |
| Tune-up power(mW) | | 100 | | 19.95 | | 11.22 | |
| Position | Separation Distance(mm) | Exclusion Thresholds | Test or not | Exclusion Thresholds | Test or not | Exclusion Thresholds | Test or not |
| Rear | 5 | 10 | YES | 7 | YES | 6 | YES |
| Front | 5 | 10 | YES | 7 | YES | 6 | YES |
| Edge1 | 14.66 | 28 | YES | 19 | YES | 18 | No |
| Edge2 | 14.77 | 28 | YES | 19 | YES | 18 | No |
| Edge3 | 4.92 | 9 | YES | 6 | YES | 6 | YES |
| Edge4 | 95.36 | 549.6 | No | 519.6 | No | 515.6 | No |

11 Conducted RF Output Power (Unit: dBm)

General Note:

1. SAR test reduction is determined according to 802.11 transmission mode configurations and certain exposure conditions with multiple test positions. In the 2.4 GHz band, separate SAR procedures are applied to DSSS and OFDM configurations to simplify DSSS test requirements. For OFDM, in both 2.4 and 5 GHz bands, an initial test configuration must be determined for each standalone and aggregated frequency band, according to the transmission mode configuration with the highest maximum output power specified for production units to perform SAR measurements. If the same highest maximum output power applies to different combinations of channel bandwidths, modulations and data rates, additional procedures are applied to determine which test configurations require SAR measurement
2. For OFDM transmission configurations in the 2.4 GHz and 5 GHz bands, When the same maximum power is specified for multiple transmission modes in a frequency band, the largest channel bandwidth, lowest order modulation, lowest data rate and lowest order 802.11a/g/n/ac mode is used for SAR measurement, on the highest measured output power channel for each frequency band.
3. DSSS and OFDM configurations are considered separately according to the required SAR procedures. SAR is measured in the initial test position using the 802.11 transmission mode configuration required by the DSSS procedure or initial test configuration and subsequent test configuration(s) according to the OFDM procedures.18 The initial test position procedure is described in the following:
 - a. When the reported SAR of the initial test position is ≤ 0.4 W/kg, further SAR measurement is not required for the other test positions in that exposure configuration and 802.11 transmission mode combinations within the frequency band or aggregated band.
 - b. When the reported SAR of the test position is > 0.4 W/kg, SAR is repeated for the 802.11 transmission mode configuration tested in the initial test position to measure the subsequent next closet/smallest test separation distance and maximum coupling test position on the highest maximum output power channel, until the report SAR is ≤ 0.8 W/kg or all required test position are tested
 - c. For all positions/configurations, when the reported SAR is > 0.8 W/kg, SAR is measured for these test positions/configurations on the subsequent next highest measured output power channel(s) until the reported SAR is ≤ 1.2 W/kg or all required channels are tested.
4. Duty cycle of test signal is as below table

| Mode | Data rate | Duty cycle (%) | Duty factor |
|-----------|-----------|----------------|-------------|
| 11b | 1 Mbps | 100 | 1 |
| 11g | 6 Mbps | 100 | 1 |
| 11n HT20 | MCS0 | 100 | 1 |
| 11a | 6 Mbps | 99.65 | 1.004 |
| 11 n HT20 | MCS0 | 99.63 | 1.004 |
| 11 n HT40 | MCS0 | 98.37 | 1.017 |
| Bluetooth | 1 Mbps | 100 | 1 |

**<2.4GHz WLAN>**

| WLAN 2.4GHz 802.11b Average Power (dBm) | | | Tune up Limit (dBm) |
|---|-----------------|-------------------|---------------------|
| Power vs. Channel | | | |
| Channel | Frequency (MHz) | Data Rate (1Mbps) | |
| CH 1 | 2412 | 17.92 | 18.00 |
| CH 6 | 2437 | 19.88 | 20.00 |
| CH 11 | 2462 | 19.12 | 19.50 |

| WLAN 2.4GHz 802.11g Average Power (dBm) | | | Tune up Limit (dBm) |
|---|-----------------|-------------------|---------------------|
| Power vs. Channel | | | |
| Channel | Frequency (MHz) | Data Rate (6Mbps) | |
| CH 1 | 2412 | 14.77 | 15.00 |
| CH 6 | 2437 | 18.92 | 19.00 |
| CH 11 | 2462 | 15.18 | 15.50 |

| WLAN 2.4GHz 802.11n-HT20 Average Power (dBm) | | | Tune up Limit (dBm) |
|--|-----------------|------------------|---------------------|
| Power vs. Channel | | | |
| Channel | Frequency (MHz) | Data Rate (MCS0) | |
| CH 1 | 2412 | 14.68 | 15.00 |
| CH 6 | 2437 | 19.01 | 19.50 |
| CH 11 | 2462 | 15.19 | 15.50 |

<5.2GHz WLAN>

| WLAN 5.2GHz 802.11a Average Power (dBm) | | | Tune up Limit (dBm) |
|---|-----------------|-------------------|---------------------|
| Power vs. Channel | | | |
| Channel | Frequency (MHz) | Data Rate (6Mbps) | |
| CH 36 | 5180 | 12.68 | 13.00 |
| CH 40 | 5200 | 12.69 | 13.00 |
| CH 44 | 5220 | 12.64 | 13.00 |
| CH 48 | 5240 | 12.62 | 13.00 |

| WLAN 5.2GHz 802.11n-HT20 Average Power (dBm) | | | Tune up Limit (dBm) |
|--|-----------------|------------------|---------------------|
| Power vs. Channel | | | |
| Channel | Frequency (MHz) | Data Rate (MCS0) | |
| CH 36 | 5180 | 12.53 | 13.00 |
| CH 40 | 5200 | 12.44 | 12.50 |
| CH 44 | 5220 | 12.42 | 12.50 |
| CH 48 | 5240 | 12.58 | 13.00 |

| WLAN 5.2GHz 802.11n-HT40 Average Power (dBm) | | | Tune up Limit (dBm) |
|--|-----------------|------------------|---------------------|
| Power vs. Channel | | | |
| Channel | Frequency (MHz) | Data Rate (MCS0) | |
| CH 38 | 5190 | 12.81 | 13.00 |
| CH 46 | 5230 | 12.86 | 13.00 |

<5.8GHz WLAN>

| WLAN 5.8GHz 802.11a Average Power (dBm) | | | Tune up Limit (dBm) |
|---|-----------------|-------------------|---------------------|
| Power vs. Channel | | | |
| Channel | Frequency (MHz) | Data Rate (6Mbps) | |
| CH 149 | 5745 | 10.16 | 10.50 |
| CH 153 | 5765 | 10.12 | 10.50 |
| CH 157 | 5785 | 10.05 | 10.50 |
| CH 161 | 5805 | 10.03 | 10.50 |
| CH 165 | 5825 | 10.01 | 10.50 |

| WLAN 5.8GHz 802.11n-HT20 Average Power (dBm) | | | Tune up Limit (dBm) |
|--|-----------------|------------------|---------------------|
| Power vs. Channel | | | |
| Channel | Frequency (MHz) | Data Rate (MCS0) | |
| CH 149 | 5745 | 10.12 | 10.50 |
| CH 153 | 5765 | 10.09 | 10.50 |
| CH 157 | 5785 | 10.06 | 10.50 |
| CH 161 | 5805 | 10.03 | 10.50 |
| CH 165 | 5825 | 10.02 | 10.50 |

| WLAN 5.8GHz 802.11n-HT40 Average Power (dBm) | | | Tune up Limit (dBm) |
|--|-----------------|------------------|---------------------|
| Power vs. Channel | | | |
| Channel | Frequency (MHz) | Data Rate (MCS0) | |
| CH 151 | 5755 | 10.12 | 10.50 |
| CH 159 | 5795 | 10.25 | 10.50 |

<Bluetooth>

| Bluetooth Average Power (dBm) | | | | Tune up Limit (dBm) |
|-------------------------------|---------|--------------------|---------------------|------------------------|
| Power vs. Channel | | | | |
| Mode | Channel | Frequency (MHz) | Average power (dBm) | |
| EDR-GFSK | 0 | 2402 | 7.55 | 8.5 |
| EDR-GFSK | 39 | 2441 | 8.22 | 8.5 |
| EDR-GFSK | 78 | 2480 | 8.12 | 8.5 |
| EDR- $\pi/4$ DQPSK | 0 | 2402 | 4.29 | 4.5 |
| EDR- $\pi/4$ DQPSK | 39 | 2441 | 4.42 | 4.5 |
| EDR- $\pi/4$ DQPSK | 78 | 2480 | 3.67 | 4.5 |
| EDR-8DPSK | 0 | 2402 | 4.29 | 4.5 |
| EDR-8DPSK | 39 | 2441 | 4.42 | 4.5 |
| EDR-8DPSK | 78 | 2480 | 3.66 | 4.5 |
| LE-GFSK | 37 | 2402 | 7.17 | 7.5 |
| LE-GFSK | 17 | 2440 | 6.72 | 7.5 |
| LE-GFSK | 39 | 2480 | 6.70 | 7.5 |



12 SAR Test Results

General Note:

1. Per KDB 447498 D01v06, the reported SAR is the measured SAR value adjusted for maximum tune-up tolerance.
 - a. Tune-up scaling Factor = tune-up limit power (mW) / EUT RF power (mW), where tune-up limit is the maximum rated power among all production units.
 - b. For SAR testing of WLAN signal with non-100% duty cycle, the measured SAR is scaled-up by the duty cycle scaling factor which is equal to "1/(duty cycle)"
 - c. For WLAN: Reported SAR(W/kg)= Measured SAR(W/kg)*Tune-up Scaling Factor
2. Per KDB 248227 D01v02r02, for U-NII-1 Head and Body-worn SAR testing is not required when the U-NII-2A band highest reported SAR for a test configuration is ≤ 1.2 W/kg, SAR is not required for U-NII-1 band.
3. When the reported SAR of the test position is > 0.4 W/kg, SAR is repeated for the 802.11 transmission mode configuration tested in the initial test position to measure the subsequent next closet/smallest test separation distance and maximum coupling test position on the highest maximum output power channel, until the report SAR is ≤ 0.8 W/kg or all required test position are tested.
4. For all positions / configurations, when the reported SAR is > 0.8 W/kg, SAR is measured for these test positions / configurations on the subsequent next highest measured output power channel(s) until the reported SAR is ≤ 1.2 W/kg or all required channels are tested.

12.1 Body SAR

<Bluetooth>

| Plot No. | Mode | Test Position | Gap (cm) | Ch. | Freq. (MHz) | Conducted Power (dBm) | Tune-Up Limit (dBm) | Tune-up Scaling Factor | Duty Scaling Factor | Power Drift (dB) | Measured 1g SAR (W/kg) | Reported 1g SAR (W/kg) |
|----------|-----------|---------------|----------|-----|-------------|-----------------------|---------------------|------------------------|---------------------|------------------|------------------------|------------------------|
| 9 | Bluetooth | Front Face | 0 | 39 | 2441 | 8.22 | 8.5 | 1.07 | 1.000 | 0.08 | 0.00513 | 0.00549 |
| 10 | Bluetooth | Rear Face | 0 | 39 | 2441 | 8.22 | 8.5 | 1.07 | 1.000 | 0.01 | 0.00217 | 0.00232 |
| 11 | Bluetooth | Edge1 | 0 | 39 | 2441 | 8.22 | 8.5 | 1.07 | 1.000 | 0.04 | 0.00505 | 0.00540 |
| 12 | Bluetooth | Edge2 | 0 | 39 | 2441 | 8.22 | 8.5 | 1.07 | 1.000 | 0.09 | 0.005 | 0.00535 |
| 13 | Bluetooth | Edge3 | 0 | 39 | 2441 | 8.22 | 8.5 | 1.07 | 1.000 | 0.02 | 0.00316 | 0.00338 |

<2.4GHz>

| Plot No. | Band | Mode | Test Position | Gap (cm) | Ch. | Freq. (MHz) | Conducted Power (dBm) | Tune-Up Limit (dBm) | Tune-up Scaling Factor | Duty Scaling Factor | Power Drift (dB) | Measured 1g SAR (W/kg) | Reported 1g SAR (W/kg) |
|----------|---------|---------|---------------|----------|-----|-------------|-----------------------|---------------------|------------------------|---------------------|------------------|------------------------|------------------------|
| 1 | 2.4 GHz | 802.11b | Front Face | 0 | 6 | 2437 | 19.88 | 20 | 1.03 | 1.000 | 0.01 | 1.430 | 1.47 |
| 2 | | 802.11b | Rear Face | 0 | 6 | 2437 | 19.88 | 20 | 1.03 | 1.000 | 0.02 | 0.224 | 0.23 |
| 3 | | 802.11b | Edge1 | 0 | 6 | 2437 | 19.88 | 20 | 1.03 | 1.000 | 0.00 | 0.52 | 0.54 |
| 4 | | 802.11b | Edge2 | 0 | 6 | 2437 | 19.88 | 20 | 1.03 | 1.000 | -0.04 | 0.154 | 0.16 |
| 5 | | 802.11b | Edge3 | 0 | 6 | 2437 | 19.88 | 20 | 1.03 | 1.000 | -0.04 | 0.746 | 0.77 |
| 6 | | 802.11b | Front Face | 0 | 1 | 2412 | 17.92 | 18 | 1.02 | 1.000 | 0.09 | 1.190 | 1.21 |
| 7 | | 802.11b | Front Face | 0 | 11 | 2462 | 19.12 | 19.5 | 1.09 | 1.000 | 0.04 | 1.200 | 1.31 |
| 46 | | 802.11n | Front Face | 0 | 6 | 2437 | 19.01 | 19.5 | 1.12 | 1.000 | 0.07 | 1.18 | 1.32 |
| 47 | | 802.11n | Front Face | 0 | 11 | 2462 | 15.19 | 15.5 | 1.07 | 1.000 | 0.06 | 0.462 | 0.49 |
| 48 | | 802.11g | Front Face | 0 | 6 | 2437 | 18.92 | 19 | 1.02 | 1.000 | 0.04 | 1.23 | 1.25 |
| 49 | | 802.11g | Front Face | 0 | 11 | 2462 | 15.18 | 15.5 | 1.08 | 1.000 | 0.04 | 0.48 | 0.52 |

<5.2GHz>

| Plot No. | Band | Mode | Test Position | Gap (cm) | Ch. | Freq. (MHz) | Conducted Power (dBm) | Tune-Up Limit (dBm) | Tune-up Scaling Factor | Duty Scaling Factor | Power Drift (dB) | Measured 1g SAR (W/kg) | Reported 1g SAR (W/kg) |
|----------|---------|----------|---------------|----------|-----|-------------|-----------------------|---------------------|------------------------|---------------------|------------------|------------------------|------------------------|
| 14 | 5.2 GHz | 11n HT40 | Front Face | 0 | 46 | 5230 | 12.86 | 13 | 1.03 | 1.017 | 0.09 | 1.36 | 1.42 |
| 15 | | 11n HT40 | Rear Face | 0 | 46 | 5230 | 12.86 | 13 | 1.03 | 1.017 | -0.05 | 0.033 | 0.03 |
| 16 | | 11n HT40 | Edge1 | 0 | 46 | 5230 | 12.86 | 13 | 1.03 | 1.017 | -0.03 | 0.119 | 0.12 |
| 17 | | 11n HT40 | Edge2 | 0 | 46 | 5230 | 12.86 | 13 | 1.03 | 1.017 | 0.07 | 0.055 | 0.06 |
| 18 | | 11n HT40 | Edge3 | 0 | 46 | 5230 | 12.86 | 13 | 1.03 | 1.017 | 0.04 | 0.219 | 0.23 |
| 19 | | 11n HT40 | Front Face | 0 | 38 | 5190 | 12.81 | 13 | 1.04 | 1.017 | 0.02 | 1.43 | 1.51 |
| 28 | | 802.11a | Front Face | 0 | 40 | 5200 | 12.69 | 13 | 1.07 | 1.004 | 0.06 | 1.34 | 1.44 |
| 29 | | 802.11a | Front Face | 0 | 36 | 5180 | 12.68 | 13 | 1.08 | 1.004 | 0.09 | 1.35 | 1.46 |
| 30 | | 802.11a | Front Face | 0 | 44 | 5220 | 12.64 | 13 | 1.09 | 1.004 | 0.02 | 1.29 | 1.41 |
| 31 | | 802.11a | Front Face | 0 | 48 | 5240 | 12.62 | 13 | 1.09 | 1.004 | 0.02 | 1.35 | 1.48 |
| 32 | | 11n HT20 | Front Face | 0 | 48 | 5240 | 12.58 | 13 | 1.10 | 1.004 | 0.06 | 1.31 | 1.45 |
| 33 | | 11n HT20 | Front Face | 0 | 36 | 5180 | 12.53 | 13 | 1.11 | 1.004 | 0.09 | 1.31 | 1.46 |
| 34 | | 11n HT20 | Front Face | 0 | 40 | 5200 | 12.44 | 12.5 | 1.01 | 1.004 | -0.01 | 1.33 | 1.35 |
| 35 | | 11n HT20 | Front Face | 0 | 44 | 5220 | 12.42 | 12.5 | 1.02 | 1.004 | 0.08 | 1.38 | 1.41 |

<5.8GHz>

| Plot No. | Band | Mode | Test Position | Gap (cm) | Ch. | Freq. (MHz) | Conducted Power (dBm) | Tune-Up Limit (dBm) | Tune-up Scaling Factor | Duty Scaling Factor | Power Drift (dB) | Measured 1g SAR (W/kg) | Reported 1g SAR (W/kg) |
|----------|---------|----------|---------------|----------|-----|-------------|-----------------------|---------------------|------------------------|---------------------|------------------|------------------------|------------------------|
| 21 | 5.8 GHz | 11n HT40 | Front Face | 0 | 159 | 5795 | 10.25 | 10.5 | 1.06 | 1.017 | -0.03 | 1.32 | 1.42 |
| 22 | | 11n HT40 | Rear Face | 0 | 159 | 5795 | 10.25 | 10.5 | 1.06 | 1.017 | 0.05 | 0.049 | 0.05 |
| 23 | | 11n HT40 | Edge1 | 0 | 159 | 5795 | 10.25 | 10.5 | 1.06 | 1.017 | 0.03 | 0.068 | 0.07 |
| 24 | | 11n HT40 | Edge2 | 0 | 159 | 5795 | 10.25 | 10.5 | 1.06 | 1.017 | 0.08 | 0.042 | 0.05 |
| 25 | | 11n HT40 | Edge3 | 0 | 159 | 5795 | 10.25 | 10.5 | 1.06 | 1.017 | -0.03 | 0.321 | 0.35 |
| 26 | | 11n HT40 | Front Face | 0 | 151 | 5755 | 10.12 | 10.5 | 1.09 | 1.017 | 0.03 | 1.36 | 1.51 |
| 36 | | 802.11a | Front Face | 0 | 149 | 5745 | 10.16 | 10.5 | 1.08 | 1.004 | -0.02 | 1.28 | 1.39 |
| 37 | | 802.11a | Front Face | 0 | 153 | 5765 | 10.12 | 10.5 | 1.09 | 1.004 | 0.03 | 1.27 | 1.39 |
| 38 | | 802.11a | Front Face | 0 | 157 | 5785 | 10.05 | 10.5 | 1.11 | 1.004 | -0.04 | 1.24 | 1.38 |
| 39 | | 802.11a | Front Face | 0 | 161 | 5805 | 10.03 | 10.5 | 1.11 | 1.004 | -0.02 | 1.21 | 1.35 |
| 40 | | 802.11a | Front Face | 0 | 165 | 5825 | 10.01 | 10.5 | 1.12 | 1.004 | -0.03 | 1.19 | 1.34 |
| 41 | | 11n HT20 | Front Face | 0 | 149 | 5745 | 10.12 | 10.5 | 1.09 | 1.004 | 0.02 | 1.32 | 1.44 |
| 42 | | 11n HT20 | Front Face | 0 | 153 | 5765 | 10.09 | 10.5 | 1.10 | 1.004 | -0.08 | 1.18 | 1.30 |
| 43 | | 11n HT20 | Front Face | 0 | 157 | 5785 | 10.06 | 10.5 | 1.11 | 1.004 | -0.09 | 1.17 | 1.30 |
| 44 | | 11n HT20 | Front Face | 0 | 161 | 5805 | 10.03 | 10.5 | 1.11 | 1.004 | -0.09 | 1.16 | 1.29 |
| 45 | | 11n HT20 | Front Face | 0 | 165 | 5825 | 10.02 | 10.5 | 1.12 | 1.004 | 0.08 | 1.16 | 1.30 |

Test Engineer : Lynus

12.2 Repeated SAR measurement

| Plot No. | Band | Mode | Test Position | Gap (cm) | Ch. | Freq. (MHz) | Conducted Power (dBm) | Tune-Up Limit (dBm) | Tune-up Scaling Factor | Duty Scaling Factor | Power Drift (dB) | Measured 1g SAR (W/kg) | Reported 1g SAR (W/kg) |
|----------|--------|----------|---------------|----------|-----|-------------|-----------------------|---------------------|------------------------|---------------------|------------------|------------------------|------------------------|
| 8 | 2.4GHz | 802.11b | Front Face | 0 | 6 | 2437 | 19.88 | 20 | 1.03 | 1.000 | 0.02 | 1.41 | 1.45 |
| 20 | 5.2GHz | 11n HT40 | Front Face | 0 | 38 | 5190 | 12.81 | 13 | 1.04 | 1.017 | 0.02 | 1.43 | 1.51 |
| 27 | 5.8GHz | 11n HT40 | Front Face | 0 | 151 | 5755 | 10.12 | 10.5 | 1.09 | 1.017 | 0.03 | 1.36 | 1.51 |

Note: Original Measured SAR / Repeated Measured SAR < 1.2

Test Engineer : Lynus

12.3 Simultaneous Transmission SAR

| Position | Bluetooth (W/kg) | 2.4 GHz W-Fi SAR (W/kg) | Summed SAR (W/kg) | Limit (W/kg) |
|------------|------------------|-------------------------|-------------------|--------------|
| Front Face | 0.00549 | 1.47 | 1.48 | 1.6 |
| Rear Face | 0.00232 | 0.23 | 0.23 | 1.6 |
| Edge1 | 0.00540 | 0.54 | 0.55 | 1.6 |
| Edge2 | 0.00535 | 0.16 | 0.17 | 1.6 |
| Edge3 | 0.00338 | 0.77 | 0.77 | 1.6 |

| Position | Bluetooth (W/kg) | 5.2 GHz W-Fi SAR (W/kg) | Summed SAR (W/kg) | Limit (W/kg) |
|------------|------------------|-------------------------|-------------------|--------------|
| Front Face | 0.00549 | 1.51 | 1.52 | 1.6 |
| Rear Face | 0.00232 | 0.03 | 0.03 | 1.6 |
| Edge1 | 0.00540 | 0.12 | 0.13 | 1.6 |
| Edge2 | 0.00535 | 0.06 | 0.07 | 1.6 |
| Edge3 | 0.00338 | 0.23 | 0.23 | 1.6 |

| Position | Bluetooth (W/kg) | 5.8 GHz W-Fi SAR (W/kg) | Summed SAR (W/kg) | Limit (W/kg) |
|------------|------------------|-------------------------|-------------------|--------------|
| Front Face | 0.00549 | 1.51 | 1.52 | 1.6 |
| Rear Face | 0.00232 | 0.05 | 0.05 | 1.6 |
| Edge1 | 0.00540 | 0.07 | 0.08 | 1.6 |
| Edge2 | 0.00535 | 0.05 | 0.06 | 1.6 |
| Edge3 | 0.00338 | 0.35 | 0.35 | 1.6 |

Simultaneous transmission SAR evaluation is not required since summed SAR value is less than 1.6 W/kg.

13 Uncertainty Assessment

The component of uncertainty may generally be categorized according to the methods used to evaluate them. The evaluation of uncertainty by the statistical analysis of a series of observations is termed a Type A evaluation of uncertainty. The evaluation of uncertainty by means other than the statistical analysis of a series of observation is termed a Type B evaluation of uncertainty. Each component of uncertainty, however evaluated, is represented by an estimated standard deviation, termed standard uncertainty, which is determined by the positive square root of the estimated variance.

A Type A evaluation of standard uncertainty may be based on any valid statistical method for treating data. This includes calculating the standard deviation of the mean of a series of independent observations; using the method of least squares to fit a curve to the data in order to estimate the parameter of the curve and their standard deviations; or carrying out an analysis of variance in order to identify and quantify random effects in certain kinds of measurement.

A type B evaluation of standard uncertainty is typically based on scientific judgment using all of the relevant information available. These may include previous measurement data, experience, and knowledge of the behavior and properties of relevant materials and instruments, manufacture's specification, data provided in calibration reports and uncertainties assigned to reference data taken from handbooks. Broadly speaking, the uncertainty is either obtained from an outdoor source or obtained from an assumed distribution, such as the normal distribution, rectangular or triangular distributions indicated in Table 14.1

| Uncertainty Distributions | Normal | Rectangular | Triangular | U-Shape |
|------------------------------------|----------------------------|---------------|---------------|---------------|
| Multi-plying Factor ^(a) | 1/ κ ^(b) | 1/ $\sqrt{3}$ | 1/ $\sqrt{6}$ | 1/ $\sqrt{2}$ |

(a) standard uncertainty is determined as the product of the multiplying factor and the estimated range of variations in the measured quantity

(b) κ is the coverage factor

Standard Uncertainty for Assumed Distribution

The combined standard uncertainty of the measurement result represents the estimated standard deviation of the result. It is obtained by combining the individual standard uncertainties of both Type A and Type B evaluation using the usual "root-sum-squares" (RSS) methods of combining standard deviations by taking the positive square root of the estimated variances.

Expanded uncertainty is a measure of uncertainty that defines an interval about the measurement result within which the measured value is confidently believed to lie. It is obtained by multiplying the combined standard uncertainty by a coverage factor. Typically, the coverage factor ranges from 2 to 3. Using a coverage factor allows the true value of a measured quantity to be specified with a defined probability within the specified uncertainty range. For purpose of this document, a coverage factor two is used, which corresponds to confidence interval of about 95 %. The DASY uncertainty Budget is shown in the following tables.

| Error Description | Uncertainty Value (±%) | Probability Distribution | Divisor | Ci (1g) | Standard Uncertainty (±%) (1g) |
|--------------------------------------|------------------------|--------------------------|------------|---------|--------------------------------|
| Measurement System | | | | | |
| Probe Calibration | 6.0 | Normal | 1.0 | 1.0 | 6.0 |
| Axial Isotropy | 4.7 | Rectangular | $\sqrt{3}$ | 0.7 | 1.9 |
| Hemispherical Isotropy | 9.6 | Rectangular | $\sqrt{3}$ | 0.7 | 3.9 |
| Boundary effects | 1.0 | Rectangular | $\sqrt{3}$ | 1.0 | 0.6 |
| Linearity | 4.7 | Rectangular | $\sqrt{3}$ | 1.0 | 2.7 |
| System Detection Limits | 1.0 | Rectangular | $\sqrt{3}$ | 1.0 | 0.6 |
| Modulation Response | 2.4 | Rectangular | $\sqrt{3}$ | 1.0 | 1.4 |
| Readout Electronics | 0.3 | Normal | 1.0 | 1.0 | 0.3 |
| Response Time | 0.8 | Rectangular | $\sqrt{3}$ | 1.0 | 0.5 |
| Integration Time | 2.6 | Rectangular | $\sqrt{3}$ | 1.0 | 1.5 |
| RF Ambient Noise | 3.0 | Rectangular | $\sqrt{3}$ | 1.0 | 1.7 |
| RF Ambient Reflections | 3.0 | Rectangular | $\sqrt{3}$ | 1.0 | 1.7 |
| Probe Positioner | 0.4 | Rectangular | $\sqrt{3}$ | 1.0 | 0.2 |
| Probe Positioning | 2.9 | Rectangular | $\sqrt{3}$ | 1.0 | 1.7 |
| Max. SAR Eval. | 2.0 | Rectangular | $\sqrt{3}$ | 1.0 | 1.2 |
| Dipole Related | | | | | |
| Device Positioning | 2.9 | Normal | 1.0 | 1.0 | 2.9 |
| Device Holder | 3.6 | Normal | 1.0 | 1.0 | 3.6 |
| Power Drift | 5.0 | Rectangular | $\sqrt{3}$ | 1.0 | 2.9 |
| Power Scaling | 0.0 | Rectangular | $\sqrt{3}$ | 1.0 | 0.0 |
| Phantom and Tissue parameters | | | | | |
| Phantom Uncertainty | 6.1 | Rectangular | $\sqrt{3}$ | 1.0 | 3.5 |
| SAR correction | 1.9 | Normal | 1.0 | 1.0 | 1.9 |
| Liquid Conductivity (measurement) | 2.0 | Normal | 1.0 | 0.8 | 1.6 |
| Liquid Permittivity (measurement) | 2.1 | Normal | 1.0 | 0.3 | 0.5 |
| Temp. unc. - Conduct | 3.4 | Rectangular | $\sqrt{3}$ | 0.8 | 1.5 |
| Temp. unc. - Permittivity | 0.4 | Rectangular | $\sqrt{3}$ | 0.2 | 0.1 |
| Combined Standard Uncertainty | | | | | 11.2 |
| Coverage Factor for 95 % | | | | | Kp=2 |
| Expanded Uncertainty | | | | | 22.4 |

Uncertainty Budget for frequency range 30 MHz to 3 GHz

| Error Description | Uncertainty Value (±%) | Probability Distribution | Divisor | Ci (1g) | Standard Uncertainty (±%) (1g) |
|--------------------------------------|------------------------|--------------------------|------------|---------|--------------------------------|
| Measurement System | | | | | |
| Probe Calibration | 6.6 | Normal | 1.0 | 1.0 | 6.6 |
| Axial Isotropy | 4.7 | Rectangular | $\sqrt{3}$ | 0.7 | 1.9 |
| Hemispherical Isotropy | 9.6 | Rectangular | $\sqrt{3}$ | 0.7 | 3.9 |
| Boundary effects | 2.0 | Rectangular | $\sqrt{3}$ | 1.0 | 1.2 |
| Linearity | 4.7 | Rectangular | $\sqrt{3}$ | 1.0 | 2.7 |
| System Detection Limits | 1.0 | Rectangular | $\sqrt{3}$ | 1.0 | 0.6 |
| Modulation Response | 2.4 | Rectangular | $\sqrt{3}$ | 1.0 | 1.4 |
| Readout Electronics | 0.3 | Normal | 1.0 | 1.0 | 0.3 |
| Response Time | 0.8 | Rectangular | $\sqrt{3}$ | 1.0 | 0.5 |
| Integration Time | 2.6 | Rectangular | $\sqrt{3}$ | 1.0 | 1.5 |
| RF Ambient Noise | 3.0 | Rectangular | $\sqrt{3}$ | 1.0 | 1.7 |
| RF Ambient Reflections | 3.0 | Rectangular | $\sqrt{3}$ | 1.0 | 1.7 |
| Probe Positioner | 0.8 | Rectangular | $\sqrt{3}$ | 1.0 | 0.5 |
| Probe Positioning | 6.7 | Rectangular | $\sqrt{3}$ | 1.0 | 3.9 |
| Max. SAR Eval. | 4.0 | Rectangular | $\sqrt{3}$ | 1.0 | 2.3 |
| Dipole Related | | | | | |
| Device Positioning | 2.9 | Normal | 1.0 | 1.0 | 2.9 |
| Device Holder | 3.6 | Normal | 1.0 | 1.0 | 3.6 |
| Power Drift | 5.0 | Rectangular | $\sqrt{3}$ | 1.0 | 2.9 |
| Power Scaling | 0.0 | Rectangular | $\sqrt{3}$ | 1.0 | 0.0 |
| Phantom and Tissue parameters | | | | | |
| Phantom Uncertainty | 6.6 | Rectangular | $\sqrt{3}$ | 1.0 | 3.8 |
| SAR correction | 1.9 | Normal | 1.0 | 1.0 | 1.9 |
| Liquid Conductivity (measurement) | 2.0 | Normal | 1.0 | 0.8 | 1.6 |
| Liquid Permittivity (measurement) | 2.1 | Normal | 1.0 | 0.3 | 0.5 |
| Temp. unc. - Conduct | 3.4 | Rectangular | $\sqrt{3}$ | 0.8 | 1.5 |
| Temp. unc. - Permittivity | 0.4 | Rectangular | $\sqrt{3}$ | 0.2 | 0.1 |
| Combined Standard Uncertainty | | | | | 12.3 |
| Coverage Factor for 95 % | | | | | Kp=2 |
| Expanded Uncertainty | | | | | 24.7 |

Uncertainty Budget for frequency range 3 GHz to 6 GHz

14 References

- [1] FCC 47CFR Part 2 , "FREQUENCY ALLOCATIONS AND RADIO TREATY MATTERS; GENERAL RULES AND REGULATIONS"
- [2] IEEE Std. C95.1-1992, "IEEE Standard for Safety Levels with Respect to Human Exposure to Radio Frequency Electromagnetic Fields, 3 kHz to 300 GHz"
- [3] IEEE Std. 1528-2013 "IEEE Recommended Practice for Determining the Peak Spatial-Average Specific Absorption Rate (SAR) in the Human Head From Wireless Communications Devices: Measurement Techniques"
- [4] SPEAG DASY System Handbook
- [5] 447498 D01 General RF Exposure Guidance, "Mobile and Portable Devices RF Exposure Procedures and Equipment Authorization Policies"
- [6] 865664 D01 SAR Measurement 100 MHz to 6 GHz, "SAR Measurement Requirements for 100 MHz to 6 GHz"
- [7] 865664 D02 RF Exposure Reporting, "RF Exposure Compliance Reporting and Documentation Considerations"
- [8] 248227 D01 802.11 Wi-Fi SAR, "SAR Guidance for IEEE 802.11 (Wi-Fi) Transmitters"



APPENDIX A. Plots of System Performance Check

System Check_B2450_160902**DUT: Dipole 2450MHz D2450V2_ SN: 929**

Communication System: CW; Frequency: 2450 MHz; Duty Cycle: 1:1

Medium: B2450_160902 Medium parameters used: $f = 2450$ MHz; $\sigma = 1.932$ S/m; $\epsilon_r = 52.419$; $\rho = 1000$ kg/m³**Ambient Temperature** : 23.6 °C; **Liquid Temperature** : 22.5 °C

DASY5 Configuration:

- Probe: EX3DV4 - SN3976; ConvF(7.45, 7.45, 7.45); Calibrated: 2016/2/22;
- Sensor-Surface: 2mm (Mechanical Surface Detection)
- Electronics: DAE4 Sn1424; Calibrated: 2016/2/16
- Phantom: ELI v5.0; Type: QDOVA002AA; Serial: TP:1238
- Measurement SW: DASY52, Version 52.8 (8); SEMCAD X Version 14.6.10 (7373)

Pin=250mW/Area Scan (81x81x1): Interpolated grid: dx=1.200 mm, dy=1.200 mm

Maximum value of SAR (interpolated) = 19.3 W/kg

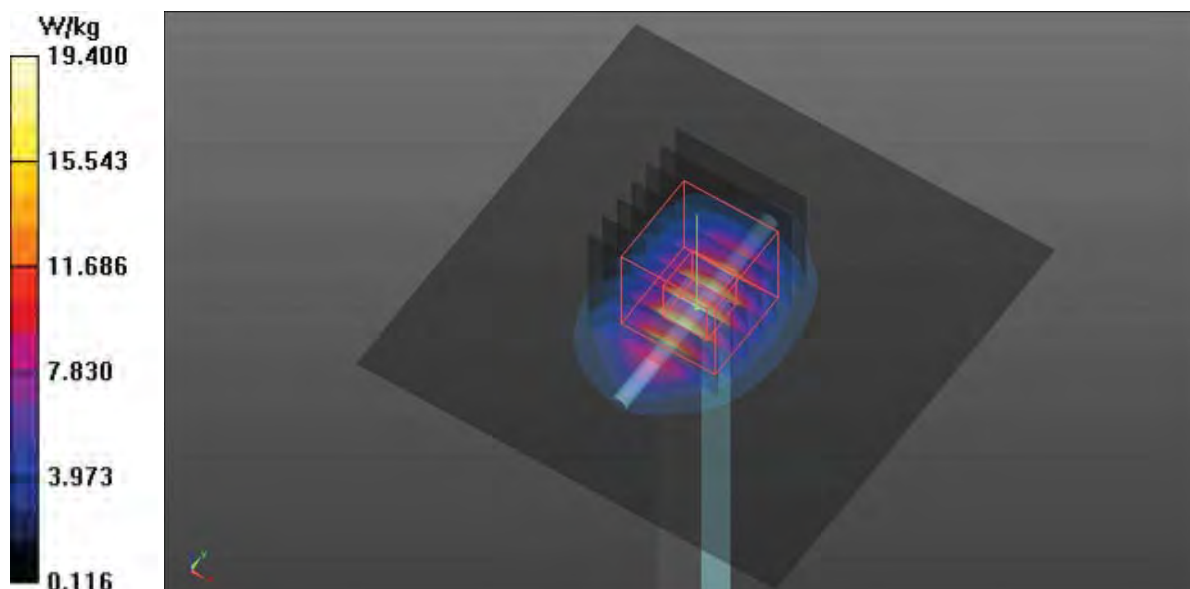
Pin=250mW/Zoom Scan (7x7x7)/Cube 0: Measurement grid: dx=5mm, dy=5mm, dz=5mm

Reference Value = 100.5 V/m; Power Drift = 0.02 dB

Peak SAR (extrapolated) = 26.3 W/kg

SAR(1 g) = 12.7 W/kg; SAR(10 g) = 5.8 W/kg

Maximum value of SAR (measured) = 19.4 W/kg



System Check_B2450_160905**DUT: Dipole 2450MHz D2450V2_ SN: 929**

Communication System: CW; Frequency: 2450 MHz; Duty Cycle: 1:1

Medium: B2450_160905 Medium parameters used: $f = 2450$ MHz; $\sigma = 1.923$ S/m; $\epsilon_r = 52.369$; $\rho = 1000$ kg/m³**Ambient Temperature** : 23.6 °C; **Liquid Temperature** : 22.5 °C

DASY5 Configuration:

- Probe: EX3DV4 - SN3976; ConvF(7.45, 7.45, 7.45); Calibrated: 2016/2/22;
- Sensor-Surface: 2mm (Mechanical Surface Detection)
- Electronics: DAE4 Sn1424; Calibrated: 2016/2/16
- Phantom: ELI v5.0; Type: QDOVA002AA; Serial: TP:1238
- Measurement SW: DASY52, Version 52.8 (8); SEMCAD X Version 14.6.10 (7373)

Pin=250mW/Area Scan (81x81x1): Interpolated grid: dx=1.200 mm, dy=1.200 mm

Maximum value of SAR (interpolated) = 19.4 W/kg

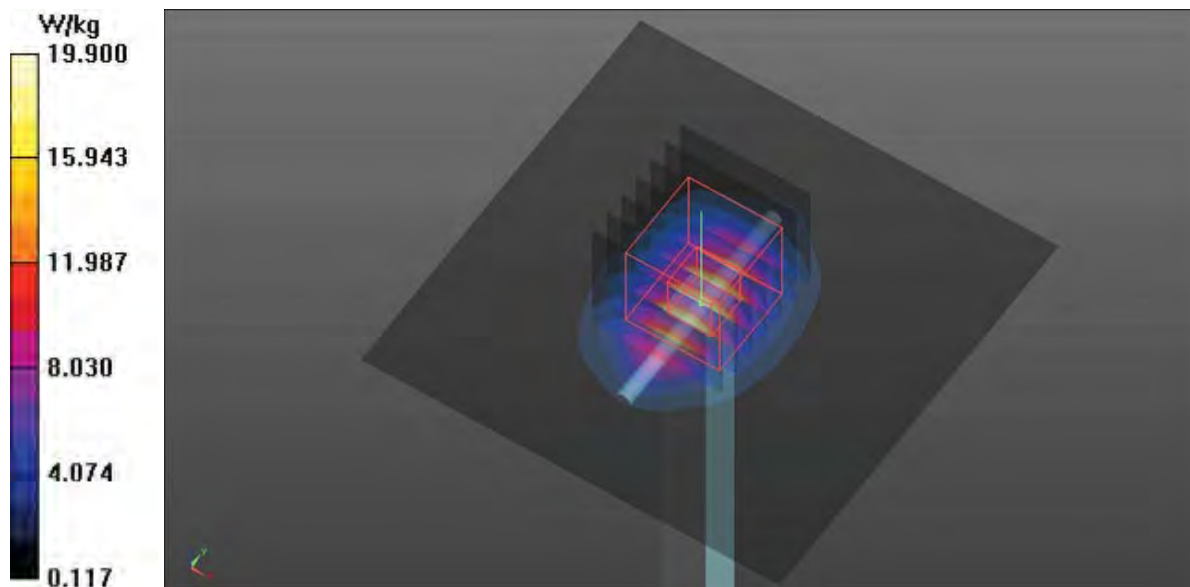
Pin=250mW/Zoom Scan (7x7x7)/Cube 0: Measurement grid: dx=5mm, dy=5mm, dz=5mm

Reference Value = 98.68 V/m; Power Drift = 0.06 dB

Peak SAR (extrapolated) = 26.9 W/kg

SAR(1 g) = 12.9 W/kg; SAR(10 g) = 5.92 W/kg

Maximum value of SAR (measured) = 19.9 W/kg



System Check_B5200_160919**DUT: Dipole D5GHzV2_SN:1171**

Communication System: CW; Frequency: 5200 MHz; Duty Cycle: 1:1

Medium: B5G_160919 Medium parameters used: $f = 5200$ MHz; $\sigma = 5.097$ S/m; $\epsilon_r = 49.229$; $\rho = 1000$ kg/m³

Ambient Temperature : 23.6 °C; **Liquid Temperature** : 22.5 °C

DASY5 Configuration:

- Probe: EX3DV4 - SN3976; ConvF(4.4, 4.4, 4.4); Calibrated: 2016/2/22;
- Sensor-Surface: 2mm (Mechanical Surface Detection)
- Electronics: DAE4 Sn1424; Calibrated: 2016/2/16
- Phantom: ELI v5.0; Type: QDOVA002AA; Serial: TP:1238
- Measurement SW: DASY52, Version 52.8 (8); SEMCAD X Version 14.6.10 (7373)

Pin=100mW/Area Scan (91x91x1): Interpolated grid: $dx=1.000$ mm, $dy=1.000$ mm

Maximum value of SAR (interpolated) = 14.0 W/kg

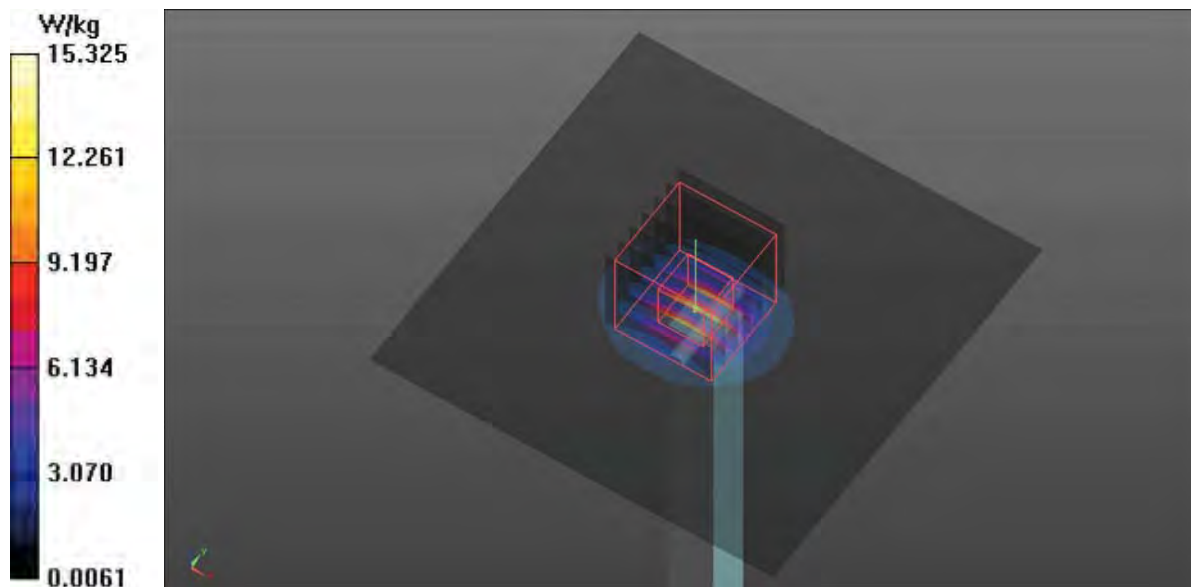
Pin=100mW/Zoom Scan (7x7x12)/Cube 0: Measurement grid: $dx=4$ mm, $dy=4$ mm, $dz=2$ mm

Reference Value = 58.13 V/m; Power Drift = 0.04 dB

Peak SAR (extrapolated) = 29.4 W/kg

SAR(1 g) = 7.35 W/kg; SAR(10 g) = 2.08 W/kg

Maximum value of SAR (measured) = 15.3 W/kg



System Check_B5800_160919**DUT: Dipole D5GHzV2_SN: 1171**

Communication System: CW; Frequency: 5800 MHz; Duty Cycle: 1:1

Medium: B5G_160919 Medium parameters used: $f = 5800$ MHz; $\sigma = 5.957$ S/m; $\epsilon_r = 47.101$; $\rho = 1000$ kg/m³**Ambient Temperature** : 23.6 °C; **Liquid Temperature** : 22.5 °C

DASY5 Configuration:

- Probe: EX3DV4 - SN3976; ConvF(3.96, 3.96, 3.96); Calibrated: 2016/2/22;
- Sensor-Surface: 2mm (Mechanical Surface Detection)
- Electronics: DAE4 Sn1424; Calibrated: 2016/2/16
- Phantom: ELI v5.0; Type: QDOVA002AA; Serial: TP:1238
- Measurement SW: DASY52, Version 52.8 (8); SEMCAD X Version 14.6.10 (7373)

Pin=100mW/Area Scan (91x91x1): Interpolated grid: dx=1.000 mm, dy=1.000 mm

Maximum value of SAR (interpolated) = 13.5 W/kg

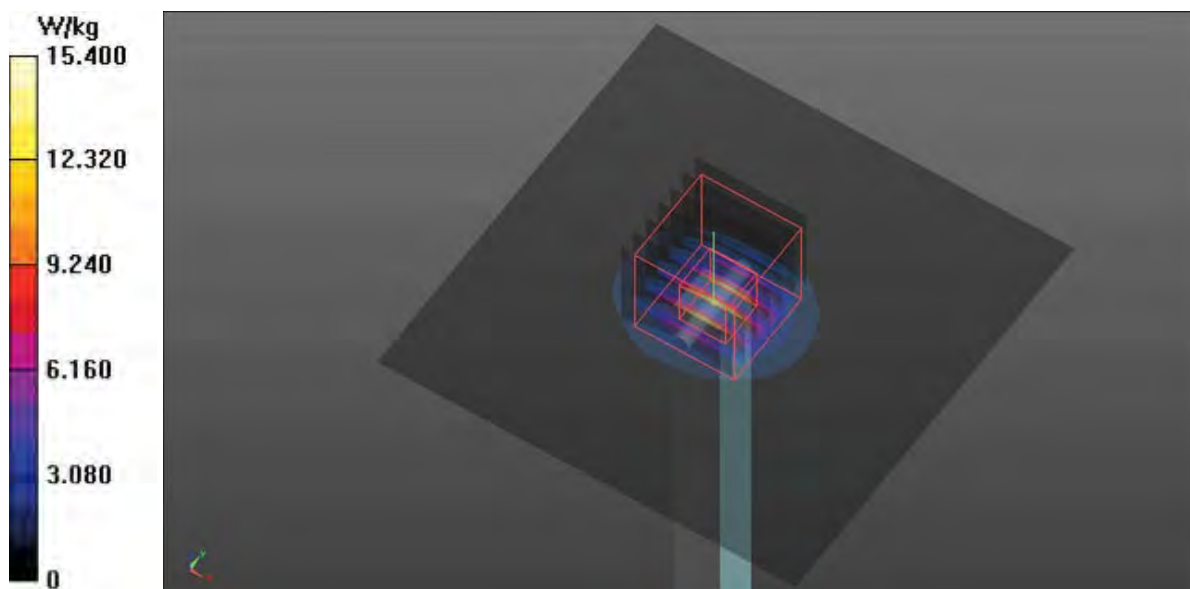
Pin=100mW/Zoom Scan (7x7x12)/Cube 0: Measurement grid: dx=4mm, dy=4mm, dz=2mm

Reference Value = 53.07 V/m; Power Drift = 0.02 dB

Peak SAR (extrapolated) = 30.4 W/kg

SAR(1 g) = 7.19 W/kg; SAR(10 g) = 2.03 W/kg

Maximum value of SAR (measured) = 15.4 W/kg



System Check_B2450_161116**DUT: Dipole 2450MHz D2450V2_ SN: 929**

Communication System: CW; Frequency: 2450 MHz; Duty Cycle: 1:1

Medium: B2450_161116 Medium parameters used: $f = 2450$ MHz; $\sigma = 1.934$ S/m; $\epsilon_r = 52.226$; $\rho = 1000$ kg/m³**Ambient Temperature** : 23.4 °C; **Liquid Temperature** : 22.2 °C

DASY5 Configuration:

- Probe: EX3DV4 - SN3976; ConvF(7.45, 7.45, 7.45); Calibrated: 2016/2/22;
- Sensor-Surface: 2mm (Mechanical Surface Detection)
- Electronics: DAE4 Sn1424; Calibrated: 2016/2/16
- Phantom: ELI v5.0; Type: QDOVA002AA; Serial: TP:1238
- Measurement SW: DASY52, Version 52.8 (8); SEMCAD X Version 14.6.10 (7373)

Pin=250mW/Area Scan (81x81x1): Interpolated grid: dx=1.200 mm, dy=1.200 mm

Maximum value of SAR (interpolated) = 19.4 W/kg

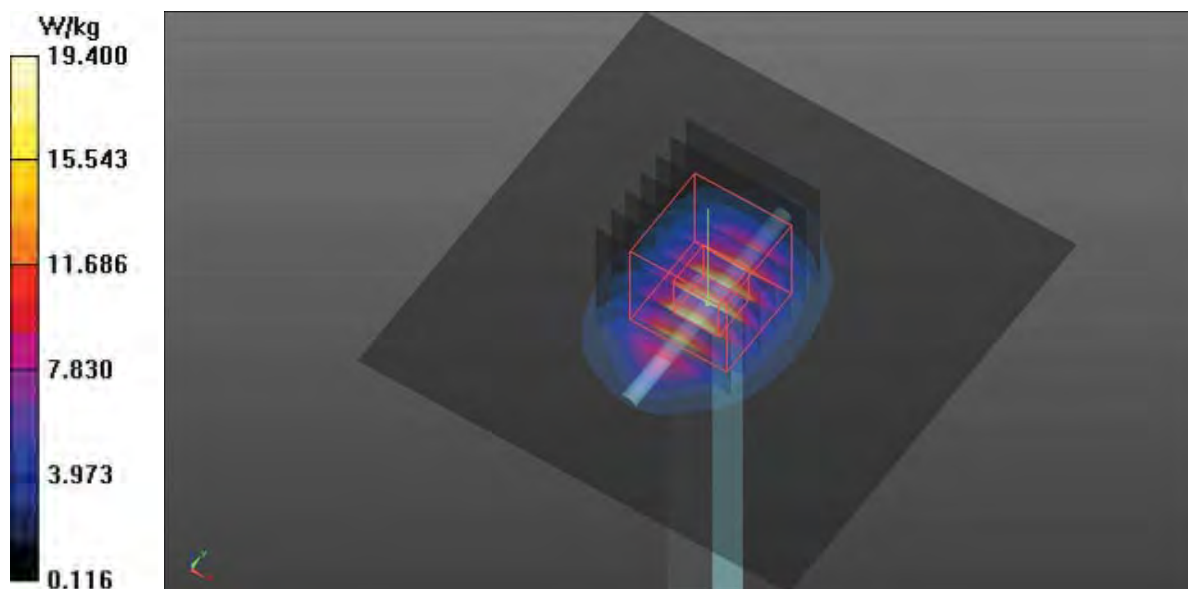
Pin=250mW/Zoom Scan (7x7x7)/Cube 0: Measurement grid: dx=5mm, dy=5mm, dz=5mm

Reference Value = 100.5 V/m; Power Drift = 0.01 dB

Peak SAR (extrapolated) = 26.3 W/kg

SAR(1 g) = 12.7 W/kg; SAR(10 g) = 5.81 W/kg

Maximum value of SAR (measured) = 19.4 W/kg



System Check_B5200_161115**DUT: Dipole D5GHzV2_ SN: 1023**

Communication System: CW; Frequency: 5200 MHz; Duty Cycle: 1:1

Medium: B5G_161115 Medium parameters used: $f = 5200$ MHz; $\sigma = 5.186$ S/m; $\epsilon_r = 48.039$; $\rho = 1000$ kg/m³

Ambient Temperature : 23.4 °C; **Liquid Temperature** : 22.2 °C

DASY5 Configuration:

- Probe: EX3DV4 - SN3976; ConvF(4.4, 4.4, 4.4); Calibrated: 2016/2/22;
- Sensor-Surface: 2mm (Mechanical Surface Detection)
- Electronics: DAE4 Sn1424; Calibrated: 2016/2/16
- Phantom: ELI v5.0; Type: QDOVA002AA; Serial: TP:1238
- Measurement SW: DASY52, Version 52.8 (8); SEMCAD X Version 14.6.10 (7373)

Pin=100mW/Area Scan (91x91x1): Interpolated grid: dx=1.000 mm, dy=1.000 mm

Maximum value of SAR (interpolated) = 13.9 W/kg

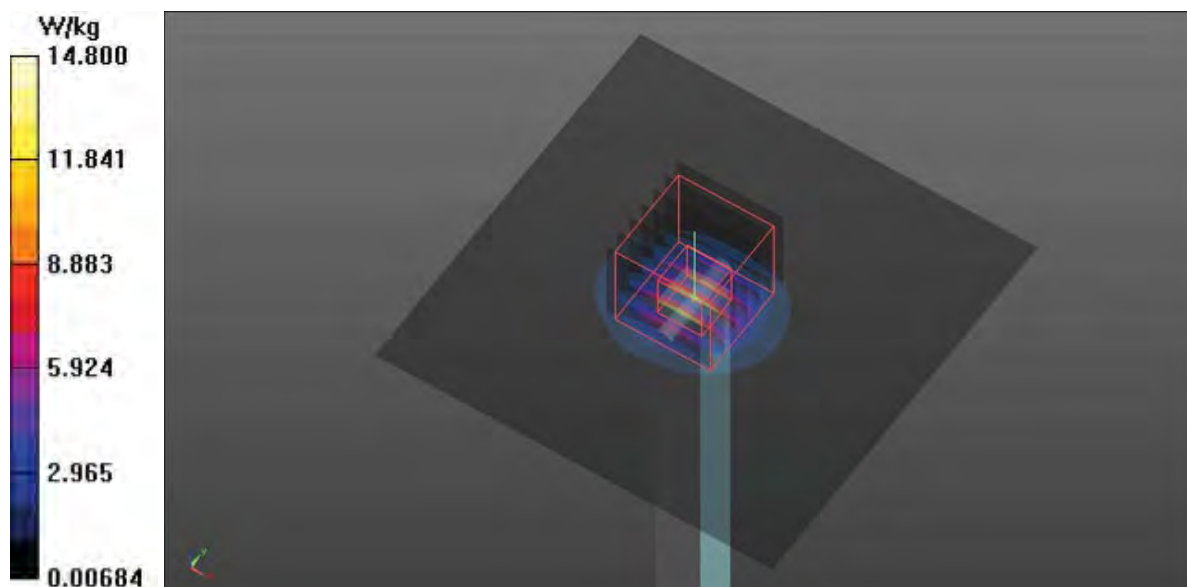
Pin=100mW/Zoom Scan (7x7x12)/Cube 0: Measurement grid: dx=4mm, dy=4mm, dz=2mm

Reference Value = 56.63 V/m; Power Drift = 0.22 dB

Peak SAR (extrapolated) = 28.8 W/kg

SAR(1 g) = 7.09 W/kg; SAR(10 g) = 2.02 W/kg

Maximum value of SAR (measured) = 14.8 W/kg



System Check_B5800_161116**DUT: Dipole D5GHzV2_ SN: 1171**

Communication System: CW; Frequency: 5800 MHz; Duty Cycle: 1:1

Medium: B5G_161116 Medium parameters used: $f = 5800$ MHz; $\sigma = 5.957$ S/m; $\epsilon_r = 47.101$; $\rho = 1000$ kg/m³

Ambient Temperature : 23.4 °C; **Liquid Temperature** : 22.2 °C

DASY5 Configuration:

- Probe: EX3DV4 - SN3976; ConvF(3.96, 3.96, 3.96); Calibrated: 2016/2/22;
- Sensor-Surface: 2mm (Mechanical Surface Detection)
- Electronics: DAE4 Sn1424; Calibrated: 2016/2/16
- Phantom: ELI v5.0; Type: QDOVA002AA; Serial: TP:1238
- Measurement SW: DASY52, Version 52.8 (8); SEMCAD X Version 14.6.10 (7373)

Pin=100mW/Area Scan (91x91x1): Interpolated grid: dx=1.000 mm, dy=1.000 mm

Maximum value of SAR (interpolated) = 13.5 W/kg

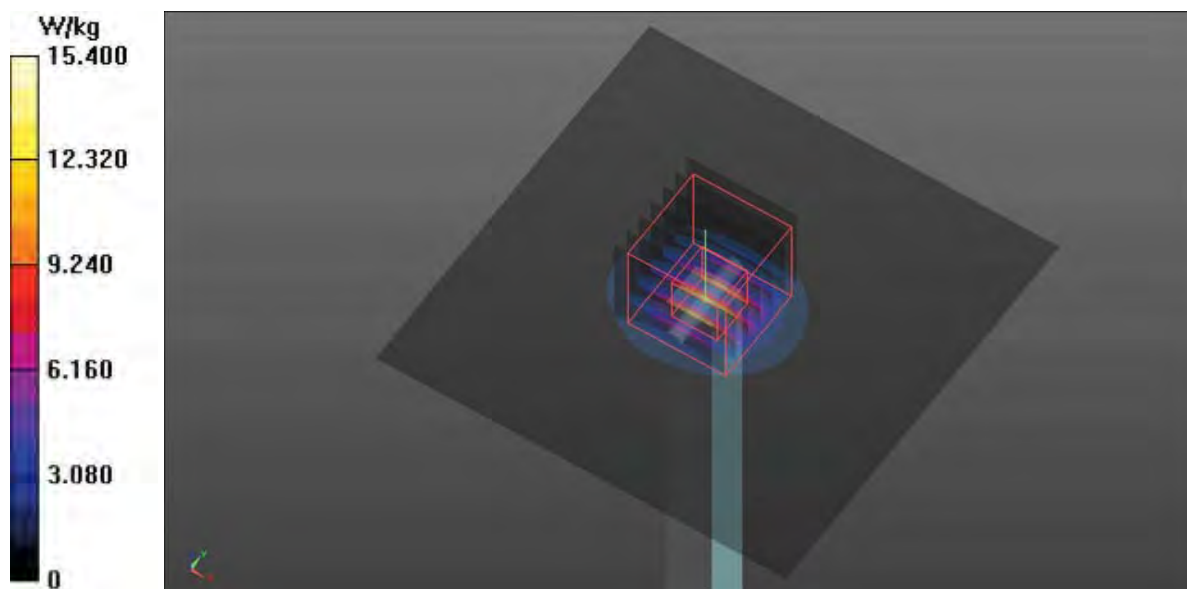
Pin=100mW/Zoom Scan (7x7x12)/Cube 0: Measurement grid: dx=4mm, dy=4mm, dz=2mm

Reference Value = 53.07 V/m; Power Drift = 0.02 dB

Peak SAR (extrapolated) = 30.4 W/kg

SAR(1 g) = 7.19 W/kg; SAR(10 g) = 2.03 W/kg

Maximum value of SAR (measured) = 15.4 W/kg





APPENDIX B. Plots of SAR Measurement

P01 802.11b_Front Face_0cm_Ch6**DUT: 681802**

Communication System: WLAN_2.4G; Frequency: 2437 MHz; Duty Cycle: 1:1

Medium: B2450_160902 Medium parameters used: $f = 2437$ MHz; $\sigma = 1.916$ S/m; $\epsilon_r = 52.46$; $\rho = 1000$ kg/m³**Ambient Temperature** : 23.6 °C; **Liquid Temperature** : 22.5 °C

DASY5 Configuration:

- Probe: EX3DV4 - SN3976; ConvF(7.45, 7.45, 7.45); Calibrated: 2016/2/22;
- Sensor-Surface: 2mm (Mechanical Surface Detection)
- Electronics: DAE4 Sn1424; Calibrated: 2016/2/16
- Phantom: ELI v5.0; Type: QDOVA002AA; Serial: TP:1238
- Measurement SW: DASY52, Version 52.8 (8); SEMCAD X Version 14.6.10 (7373)

Ch6/Area Scan (71x131x1): Interpolated grid: dx=1.200 mm, dy=1.200 mm

Maximum value of SAR (interpolated) = 1.86 W/kg

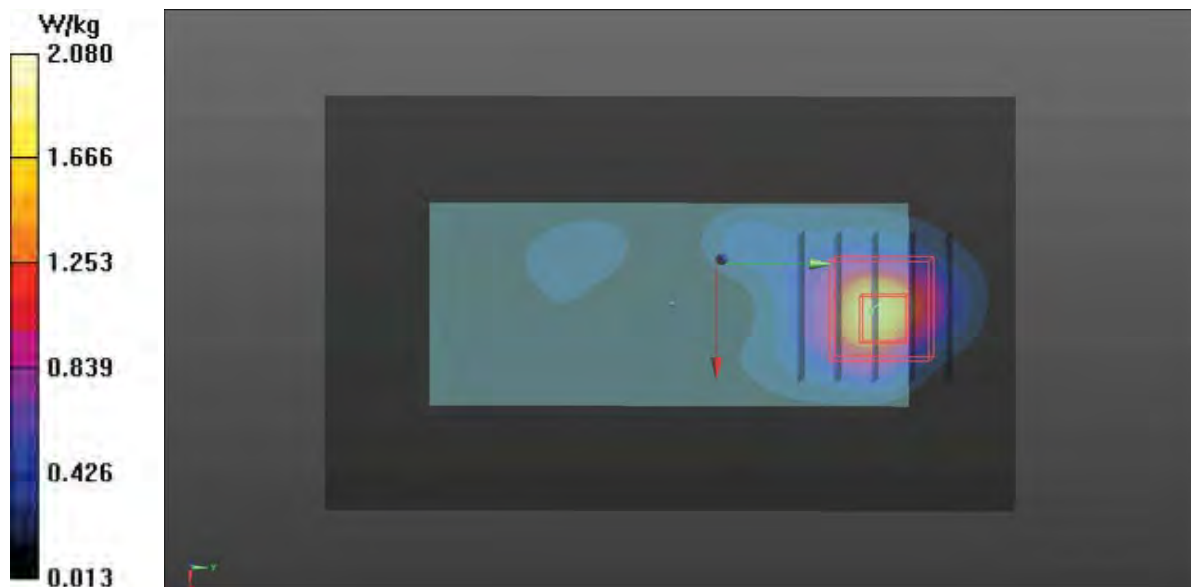
Ch6/Zoom Scan (5x5x7)/Cube 0: Measurement grid: dx=8mm, dy=8mm, dz=5mm

Reference Value = 4.071 V/m; Power Drift = 0.01 dB

Peak SAR (extrapolated) = 3.48 W/kg

SAR(1 g) = 1.43 W/kg; SAR(10 g) = 0.598 W/kg

Maximum value of SAR (measured) = 2.08 W/kg



P19 802.11n_HT40_Front Face_0cm_Ch38**DUT: 681802**

Communication System: WLAN_5G; Frequency: 5190 MHz; Duty Cycle: 1:017

Medium: B5G_160919 Medium parameters used: $f = 5190$ MHz; $\sigma = 5.174$ S/m; $\epsilon_r = 48.052$; $\rho = 1000$ kg/m³**Ambient Temperature** : 23.6 °C; **Liquid Temperature** : 22.5 °C

DASY5 Configuration:

- Probe: EX3DV4 - SN3976; ConvF(4.4, 4.4, 4.4); Calibrated: 2016/2/22;
- Sensor-Surface: 2mm (Mechanical Surface Detection)
- Electronics: DAE4 Sn1424; Calibrated: 2016/2/16
- Phantom: ELI v5.0; Type: QDOVA002AA; Serial: TP:1238
- Measurement SW: DASY52, Version 52.8 (8); SEMCAD X Version 14.6.10 (7373)

Ch38/Area Scan (61x121x1): Interpolated grid: dx=1.000 mm, dy=1.000 mm

Maximum value of SAR (interpolated) = 1.36 W/kg

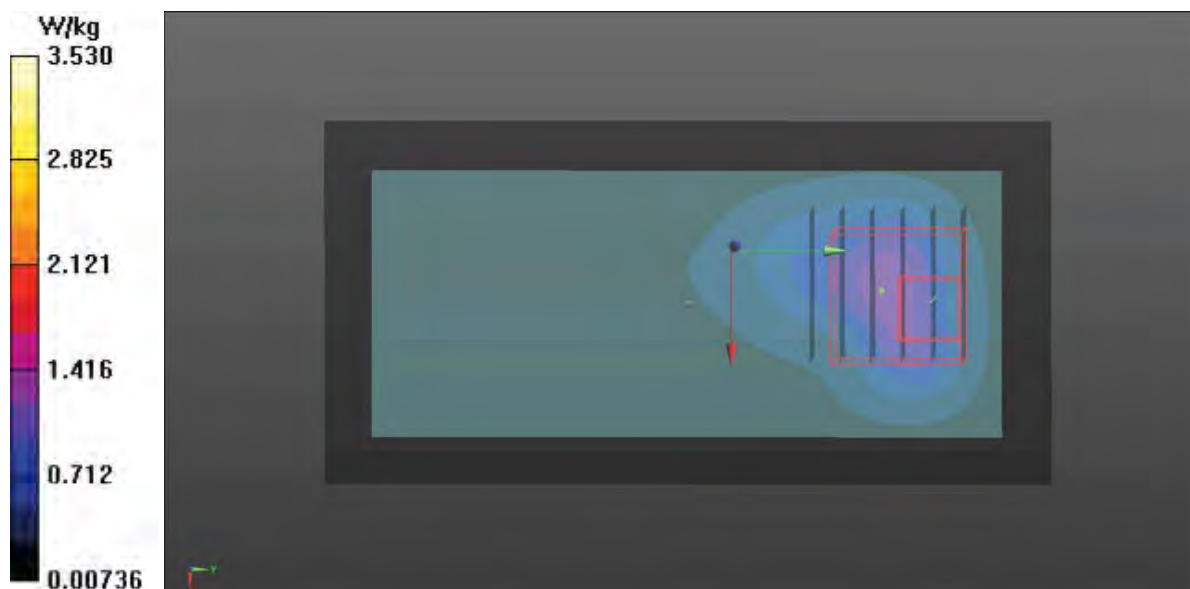
Ch38/Zoom Scan (6x6x12)/Cube 0: Measurement grid: dx=5mm, dy=5mm, dz=2mm

Reference Value = 3.916 V/m; Power Drift = 0.02 dB

Peak SAR (extrapolated) = 7.87 W/kg

SAR(1 g) = 1.43 W/kg; SAR(10 g) = 0.336 W/kg

Maximum value of SAR (measured) = 3.53 W/kg



P26 802.11n_HT40_Front Face_0cm_Ch151**DUT: 681802**

Communication System: WLAN_5G; Frequency: 5755 MHz; Duty Cycle: 1:017

Medium: B5G_160919 Medium parameters used: $f = 5755$ MHz; $\sigma = 5.886$ S/m; $\epsilon_r = 47.139$; $\rho = 1000$ kg/m³**Ambient Temperature** : 23.6 °C; **Liquid Temperature** : 22.5 °C

DASY5 Configuration:

- Probe: EX3DV4 - SN3976; ConvF(3.96, 3.96, 3.96); Calibrated: 2016/2/22;
- Sensor-Surface: 2mm (Mechanical Surface Detection)
- Electronics: DAE4 Sn1424; Calibrated: 2016/2/16
- Phantom: ELI v5.0; Type: QDOVA002AA; Serial: TP:1238
- Measurement SW: DASY52, Version 52.8 (8); SEMCAD X Version 14.6.10 (7373)

Ch151/Area Scan (61x121x1): Interpolated grid: $dx=1.000$ mm, $dy=1.000$ mm

Maximum value of SAR (interpolated) = 1.60 W/kg

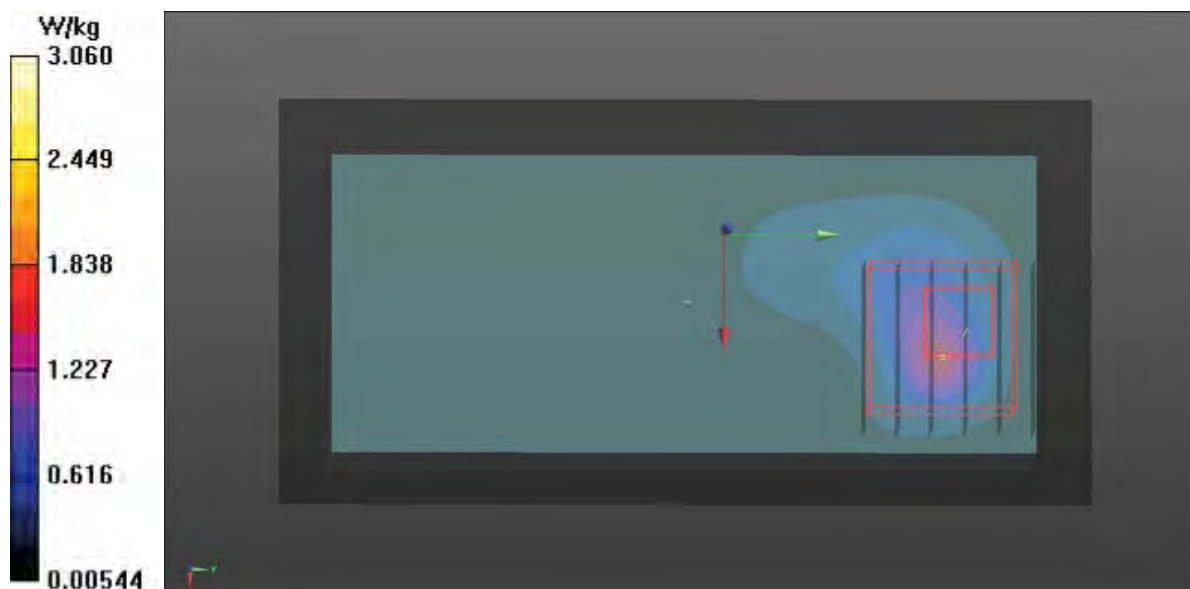
Ch151/Zoom Scan (6x6x12)/Cube 0: Measurement grid: $dx=5$ mm, $dy=5$ mm, $dz=2$ mm

Reference Value = 2.041 V/m; Power Drift = 0.03 dB

Peak SAR (extrapolated) = 7.51 W/kg

SAR(1 g) = 1.36 W/kg; SAR(10 g) = 0.316 W/kg

Maximum value of SAR (measured) = 3.06 W/kg



P09 Bluetooth_Front Face_0cm_Ch39**DUT: 681802**

Communication System: Bluetooth_2.0; Frequency: 2441 MHz; Duty Cycle: 1:1

Medium: B2450_160905 Medium parameters used: $f = 2441$ MHz; $\sigma = 1.912$ S/m; $\epsilon_r = 52.393$; $\rho = 1000$ kg/m³**Ambient Temperature** : 23.6 °C; **Liquid Temperature** : 22.5 °C

DASY5 Configuration:

- Probe: EX3DV4 - SN3976; ConvF(7.45, 7.45, 7.45); Calibrated: 2016/2/22;
- Sensor-Surface: 2mm (Mechanical Surface Detection)
- Electronics: DAE4 Sn1424; Calibrated: 2016/2/16
- Phantom: ELI v5.0; Type: QDOVA002AA; Serial: TP:1238
- Measurement SW: DASY52, Version 52.8 (8); SEMCAD X Version 14.6.10 (7373)

Ch39/Area Scan (51x111x1): Interpolated grid: dx=1.200 mm, dy=1.200 mm

Maximum value of SAR (interpolated) = 0.00941 W/kg

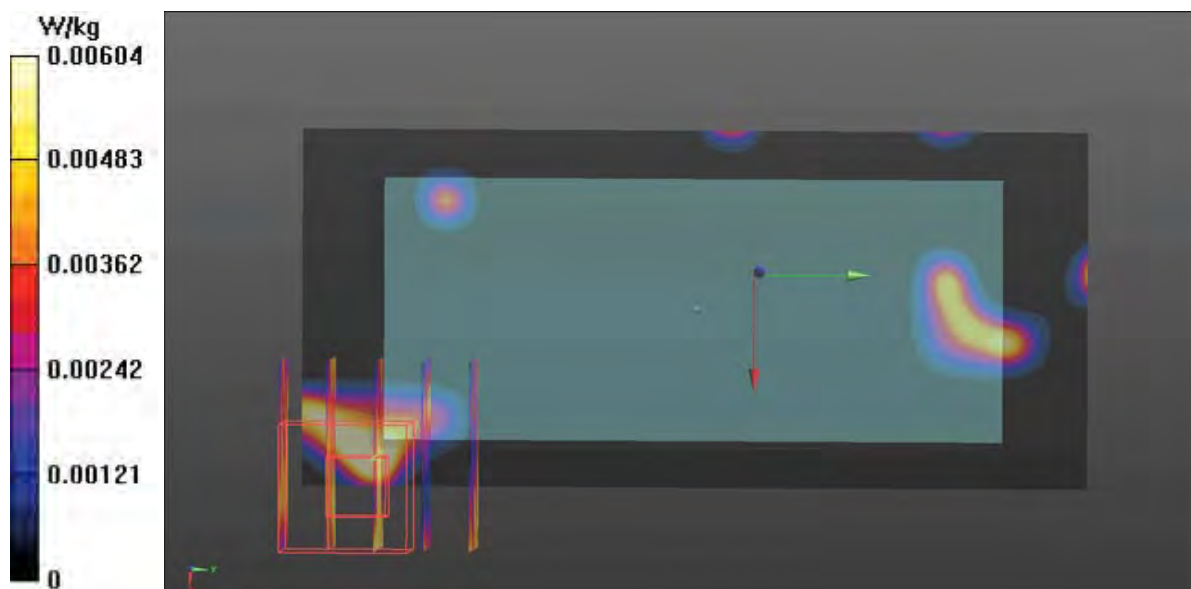
Ch39/Zoom Scan (5x5x7)/Cube 0: Measurement grid: dx=8mm, dy=8mm, dz=5mm

Reference Value = 0.3860 V/m; Power Drift = 0.08 dB

Peak SAR (extrapolated) = 0.00640 W/kg

SAR(1 g) = 0.00513 W/kg; SAR(10 g) = 0.00336 W/kg

Maximum value of SAR (measured) = 0.00604 W/kg



P46 802.11n_HT20_Front Face_0cm_Ch6**DUT: 681802**

Communication System: WLAN_2.4G; Frequency: 2437 MHz; Duty Cycle: 1:1

Medium: B2450_161116 Medium parameters used: $f = 2437$ MHz; $\sigma = 1.918$ S/m; $\epsilon_r = 52.261$; $\rho = 1000$ kg/m³**Ambient Temperature** : 23.4 °C; **Liquid Temperature** : 22.2 °C

DASY5 Configuration:

- Probe: EX3DV4 - SN3976; ConvF(7.45, 7.45, 7.45); Calibrated: 2016/2/22;
- Sensor-Surface: 2mm (Mechanical Surface Detection)
- Electronics: DAE4 Sn1424; Calibrated: 2016/2/16
- Phantom: ELI v5.0; Type: QDOVA002AA; Serial: TP:1238
- Measurement SW: DASY52, Version 52.8 (8); SEMCAD X Version 14.6.10 (7373)

Ch6/Area Scan (61x101x1): Interpolated grid: dx=1.200 mm, dy=1.200 mm

Maximum value of SAR (interpolated) = 2.12 W/kg

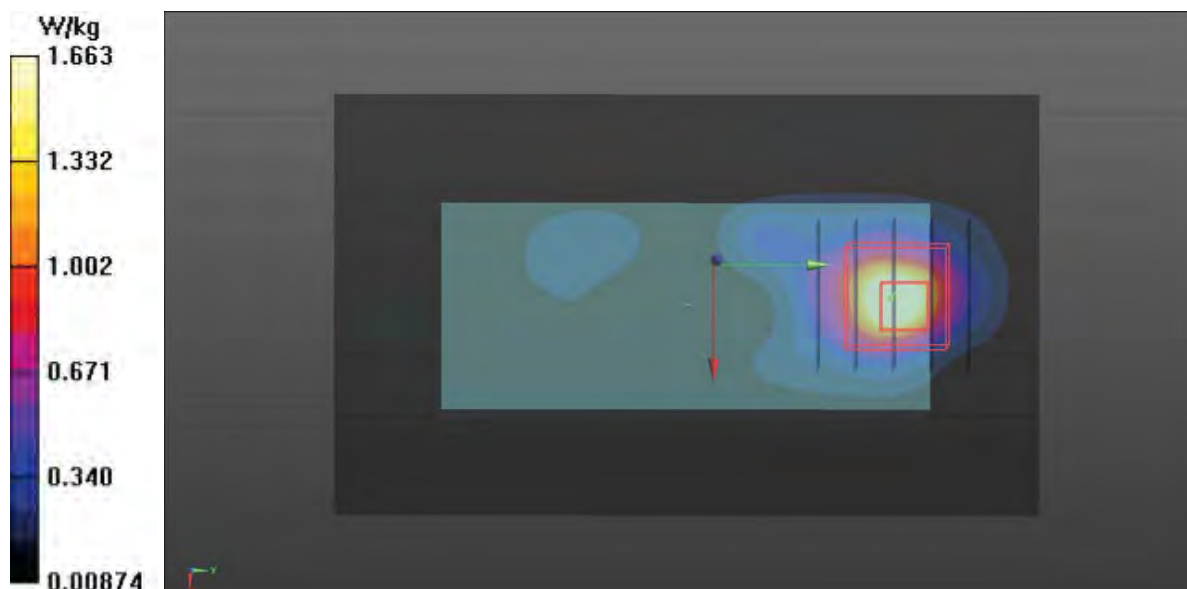
Ch6/Zoom Scan (5x5x7)/Cube 0: Measurement grid: dx=8mm, dy=8mm, dz=5mm

Reference Value = 3.268 V/m; Power Drift = 0.07 dB

Peak SAR (extrapolated) = 2.79 W/kg

SAR(1 g) = 1.18 W/kg; SAR(10 g) = 0.503 W/kg

Maximum value of SAR (measured) = 1.66 W/kg



P31 802.11a_Front Face_0cm_Ch48**DUT: 681802**

Communication System: WLAN_5G; Frequency: 5240 MHz; Duty Cycle: 1:1.004

Medium: B5G_161115 Medium parameters used: $f = 5240$ MHz; $\sigma = 5.232$ S/m; $\epsilon_r = 47.977$; $\rho = 1000$ kg/m³**Ambient Temperature** : 23.4 °C; **Liquid Temperature** : 22.2 °C

DASY5 Configuration:

- Probe: EX3DV4 - SN3976; ConvF(4.4, 4.4, 4.4); Calibrated: 2016/2/22;
- Sensor-Surface: 2mm (Mechanical Surface Detection)
- Electronics: DAE4 Sn1424; Calibrated: 2016/2/16
- Phantom: ELI v5.0; Type: QDOVA002AA; Serial: TP:1238
- Measurement SW: DASY52, Version 52.8 (8); SEMCAD X Version 14.6.10 (7373)

Ch48/Area Scan (61x121x1): Interpolated grid: dx=1.000 mm, dy=1.000 mm

Maximum value of SAR (interpolated) = 2.80 W/kg

Ch48/Zoom Scan (6x6x12)/Cube 0: Measurement grid: dx=5mm, dy=5mm, dz=2mm

Reference Value = 3.646 V/m; Power Drift = 0.02 dB

Peak SAR (extrapolated) = 7.86 W/kg

SAR(1 g) = 1.35 W/kg; SAR(10 g) = 0.308 W/kg

Maximum value of SAR (measured) = 3.22 W/kg



P41 802.11n_HT20_Front Face_0cm_Ch149**DUT: 681802**

Communication System: WLAN_5G; Frequency: 5745 MHz; Duty Cycle: 1:1.004

Medium: B5G_161116 Medium parameters used: $f = 5745$ MHz; $\sigma = 5.869$ S/m; $\epsilon_r = 47.158$; $\rho = 1000$ kg/m³**Ambient Temperature** : 23.4 °C; **Liquid Temperature** : 22.2 °C

DASY5 Configuration:

- Probe: EX3DV4 - SN3976; ConvF(3.96, 3.96, 3.96); Calibrated: 2016/2/22;
- Sensor-Surface: 2mm (Mechanical Surface Detection)
- Electronics: DAE4 Sn1424; Calibrated: 2016/2/16
- Phantom: ELI v5.0; Type: QDOVA002AA; Serial: TP:1238
- Measurement SW: DASY52, Version 52.8 (8); SEMCAD X Version 14.6.10 (7373)

Ch149/Area Scan (61x121x1): Interpolated grid: dx=1.000 mm, dy=1.000 mm

Maximum value of SAR (interpolated) = 3.00 W/kg

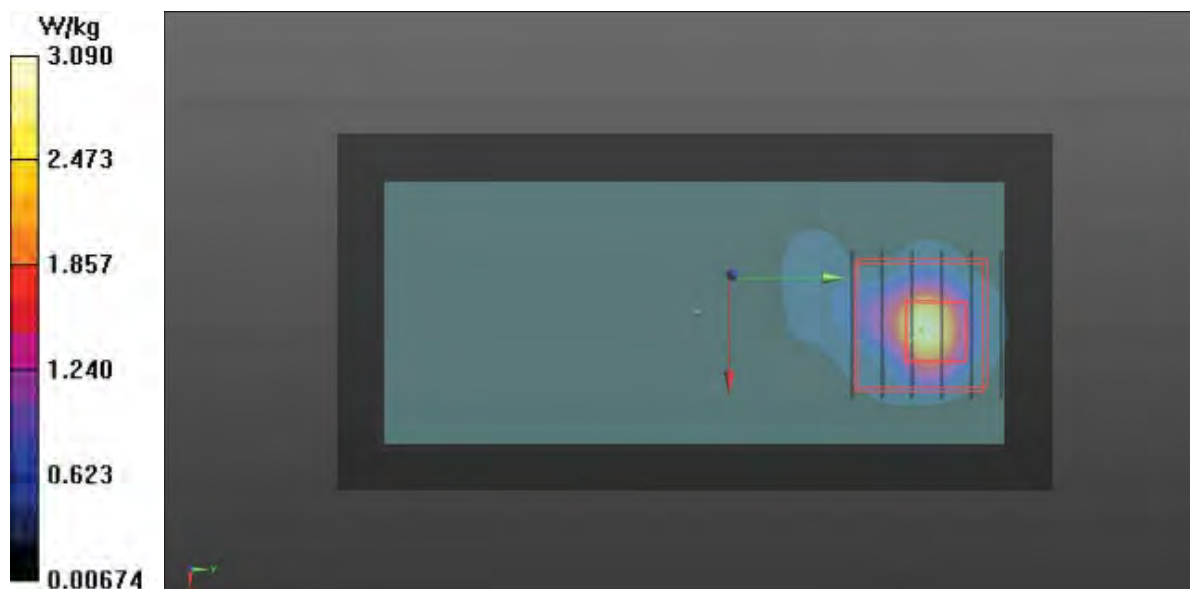
Ch149/Zoom Scan (6x6x12)/Cube 0: Measurement grid: dx=5mm, dy=5mm, dz=2mm

Reference Value = 2.504 V/m; Power Drift = 0.02 dB

Peak SAR (extrapolated) = 7.83 W/kg

SAR(1 g) = 1.32 W/kg; SAR(10 g) = 0.335 W/kg

Maximum value of SAR (measured) = 3.09 W/kg





APPENDIX C. DASY Calibration Certificate



Accredited by the Swiss Accreditation Service (SAS)

The Swiss Accreditation Service is one of the signatories to the EA
Multilateral Agreement for the recognition of calibration certificates

Accreditation No.: **SCS 0108**

Client **Sporton-ICC (Auden)**

Certificate No: **D2450V2-929_Feb16**

CALIBRATION CERTIFICATE

Object **D2450V2 - SN: 929**

Calibration procedure(s) **QA CAL-05.v9**
Calibration procedure for dipole validation kits above 700 MHz

Calibration date: **February 09, 2016**

This calibration certificate documents the traceability to national standards, which realize the physical units of measurements (SI).
The measurements and the uncertainties with confidence probability are given on the following pages and are part of the certificate.

All calibrations have been conducted in the closed laboratory facility: environment temperature (22 ± 3)°C and humidity < 70%.

Calibration Equipment used (M&TE critical for calibration)

| Primary Standards | ID # | Cal Date (Certificate No.) | Scheduled Calibration |
|-----------------------------|--------------------|-----------------------------------|------------------------|
| Power meter EPM-442A | GB37480704 | 07-Oct-15 (No. 217-02222) | Oct-16 |
| Power sensor HP 8481A | US37292783 | 07-Oct-15 (No. 217-02222) | Oct-16 |
| Power sensor HP 8481A | MY41092317 | 07-Oct-15 (No. 217-02223) | Oct-16 |
| Reference 20 dB Attenuator | SN: 5058 (20k) | 01-Apr-15 (No. 217-02131) | Mar-16 |
| Type-N mismatch combination | SN: 5047.2 / 06327 | 01-Apr-15 (No. 217-02134) | Mar-16 |
| Reference Probe EX3DV4 | SN: 7349 | 31-Dec-15 (No. EX3-7349_Dec15) | Dec-16 |
| DAE4 | SN: 601 | 30-Dec-15 (No. DAE4-601_Dec15) | Dec-16 |
| Secondary Standards | ID # | Check Date (in house) | Scheduled Check |
| RF generator R&S SMT-06 | 100972 | 15-Jun-15 (in house check Jun-15) | In house check: Jun-18 |
| Network Analyzer HP 8753E | US37390585 S4206 | 18-Oct-01 (in house check Oct-15) | In house check: Oct-16 |

Calibrated by: **Michael Weber** **Laboratory Technician**

Signature

Approved by: **Katja Pokovic** **Technical Manager**

Issued: February 10, 2016

This calibration certificate shall not be reproduced except in full without written approval of the laboratory.



Accredited by the Swiss Accreditation Service (SAS)

Accreditation No.: **SCS 0108**

The Swiss Accreditation Service is one of the signatories to the EA
Multilateral Agreement for the recognition of calibration certificates

Glossary:

| | |
|-------|---------------------------------|
| TSL | tissue simulating liquid |
| ConvF | sensitivity in TSL / NORM x,y,z |
| N/A | not applicable or not measured |

Calibration is Performed According to the Following Standards:

- IEEE Std 1528-2013, "IEEE Recommended Practice for Determining the Peak Spatial-Averaged Specific Absorption Rate (SAR) in the Human Head from Wireless Communications Devices: Measurement Techniques", June 2013
- IEC 62209-1, "Procedure to measure the Specific Absorption Rate (SAR) for hand-held devices used in close proximity to the ear (frequency range of 300 MHz to 3 GHz)", February 2005
- IEC 62209-2, "Procedure to determine the Specific Absorption Rate (SAR) for wireless communication devices used in close proximity to the human body (frequency range of 30 MHz to 6 GHz)", March 2010
- KDB 865664, "SAR Measurement Requirements for 100 MHz to 6 GHz"

Additional Documentation:

- DASY4/5 System Handbook

Methods Applied and Interpretation of Parameters:

- Measurement Conditions:** Further details are available from the Validation Report at the end of the certificate. All figures stated in the certificate are valid at the frequency indicated.
- Antenna Parameters with TSL:** The dipole is mounted with the spacer to position its feed point exactly below the center marking of the flat phantom section, with the arms oriented parallel to the body axis.
- Feed Point Impedance and Return Loss:** These parameters are measured with the dipole positioned under the liquid filled phantom. The impedance stated is transformed from the measurement at the SMA connector to the feed point. The Return Loss ensures low reflected power. No uncertainty required.
- Electrical Delay:** One-way delay between the SMA connector and the antenna feed point. No uncertainty required.
- SAR measured:** SAR measured at the stated antenna input power.
- SAR normalized:** SAR as measured, normalized to an input power of 1 W at the antenna connector.
- SAR for nominal TSL parameters:** The measured TSL parameters are used to calculate the nominal SAR result.

The reported uncertainty of measurement is stated as the standard uncertainty of measurement multiplied by the coverage factor $k=2$, which for a normal distribution corresponds to a coverage probability of approximately 95%.

Measurement Conditions

DASY system configuration, as far as not given on page 1.

| | | |
|------------------------------|------------------------|-------------|
| DASY Version | DASY5 | V52.8.8 |
| Extrapolation | Advanced Extrapolation | |
| Phantom | Modular Flat Phantom | |
| Distance Dipole Center - TSL | 10 mm | with Spacer |
| Zoom Scan Resolution | dx, dy, dz = 5 mm | |
| Frequency | 2450 MHz \pm 1 MHz | |

Head TSL parameters

The following parameters and calculations were applied.

| | Temperature | Permittivity | Conductivity |
|---|---------------------|----------------|----------------------|
| Nominal Head TSL parameters | 22.0 °C | 39.2 | 1.80 mho/m |
| Measured Head TSL parameters | (22.0 \pm 0.2) °C | 38.7 \pm 6 % | 1.84 mho/m \pm 6 % |
| Head TSL temperature change during test | < 0.5 °C | ---- | ---- |

SAR result with Head TSL

| | | |
|---|--------------------|------------------------------|
| SAR averaged over 1 cm ³ (1 g) of Head TSL | Condition | |
| SAR measured | 250 mW input power | 13.0 W/kg |
| SAR for nominal Head TSL parameters | normalized to 1W | 51.3 W/kg \pm 17.0 % (k=2) |

| | | |
|---|--------------------|------------------------------|
| SAR averaged over 10 cm ³ (10 g) of Head TSL | condition | |
| SAR measured | 250 mW input power | 6.00 W/kg |
| SAR for nominal Head TSL parameters | normalized to 1W | 23.8 W/kg \pm 16.5 % (k=2) |

Body TSL parameters

The following parameters and calculations were applied.

| | Temperature | Permittivity | Conductivity |
|---|---------------------|----------------|----------------------|
| Nominal Body TSL parameters | 22.0 °C | 52.7 | 1.95 mho/m |
| Measured Body TSL parameters | (22.0 \pm 0.2) °C | 52.9 \pm 6 % | 2.00 mho/m \pm 6 % |
| Body TSL temperature change during test | < 0.5 °C | ---- | ---- |

SAR result with Body TSL

| | | |
|---|--------------------|------------------------------|
| SAR averaged over 1 cm ³ (1 g) of Body TSL | Condition | |
| SAR measured | 250 mW input power | 12.6 W/kg |
| SAR for nominal Body TSL parameters | normalized to 1W | 49.8 W/kg \pm 17.0 % (k=2) |

| | | |
|---|--------------------|------------------------------|
| SAR averaged over 10 cm ³ (10 g) of Body TSL | condition | |
| SAR measured | 250 mW input power | 5.90 W/kg |
| SAR for nominal Body TSL parameters | normalized to 1W | 23.5 W/kg \pm 16.5 % (k=2) |

Appendix (Additional assessments outside the scope of SCS 0108)

Antenna Parameters with Head TSL

| | |
|--------------------------------------|-----------------------------|
| Impedance, transformed to feed point | $52.7 \Omega + 3.9 j\Omega$ |
| Return Loss | - 26.8 dB |

Antenna Parameters with Body TSL

| | |
|--------------------------------------|-----------------------------|
| Impedance, transformed to feed point | $49.2 \Omega + 6.5 j\Omega$ |
| Return Loss | - 23.6 dB |

General Antenna Parameters and Design

| | |
|----------------------------------|----------|
| Electrical Delay (one direction) | 1.161 ns |
|----------------------------------|----------|

After long term use with 100W radiated power, only a slight warming of the dipole near the feedpoint can be measured.

The dipole is made of standard semirigid coaxial cable. The center conductor of the feeding line is directly connected to the second arm of the dipole. The antenna is therefore short-circuited for DC-signals. On some of the dipoles, small end caps are added to the dipole arms in order to improve matching when loaded according to the position as explained in the "Measurement Conditions" paragraph. The SAR data are not affected by this change. The overall dipole length is still according to the Standard.

No excessive force must be applied to the dipole arms, because they might bend or the soldered connections near the feedpoint may be damaged.

Additional EUT Data

| | |
|-----------------|--------------------|
| Manufactured by | SPEAG |
| Manufactured on | September 26, 2013 |

DASY5 Validation Report for Head TSL

Date: 09.02.2016

Test Laboratory: SPEAG, Zurich, Switzerland

DUT: Dipole 2450 MHz; Type: D2450V2; Serial: D2450V2 - SN: 929

Communication System: UID 0 - CW; Frequency: 2450 MHz

Medium parameters used: $f = 2450$ MHz; $\sigma = 1.84$ S/m; $\epsilon_r = 38.7$; $\rho = 1000$ kg/m³

Phantom section: Flat Section

Measurement Standard: DASY5 (IEEE/IEC/ANSI C63.19-2011)

DASY52 Configuration:

- Probe: EX3DV4 - SN7349; ConvF(7.76, 7.76, 7.76); Calibrated: 31.12.2015;
- Sensor-Surface: 1.4mm (Mechanical Surface Detection)
- Electronics: DAE4 Sn601; Calibrated: 30.12.2015
- Phantom: Flat Phantom 5.0 (front); Type: QD000P50AA; Serial: 1001
- DASY52 52.8.8(1258); SEMCAD X 14.6.10(7372)

Dipole Calibration for Head Tissue/Pin=250 mW, d=10mm/Zoom Scan (7x7x7)/Cube 0:

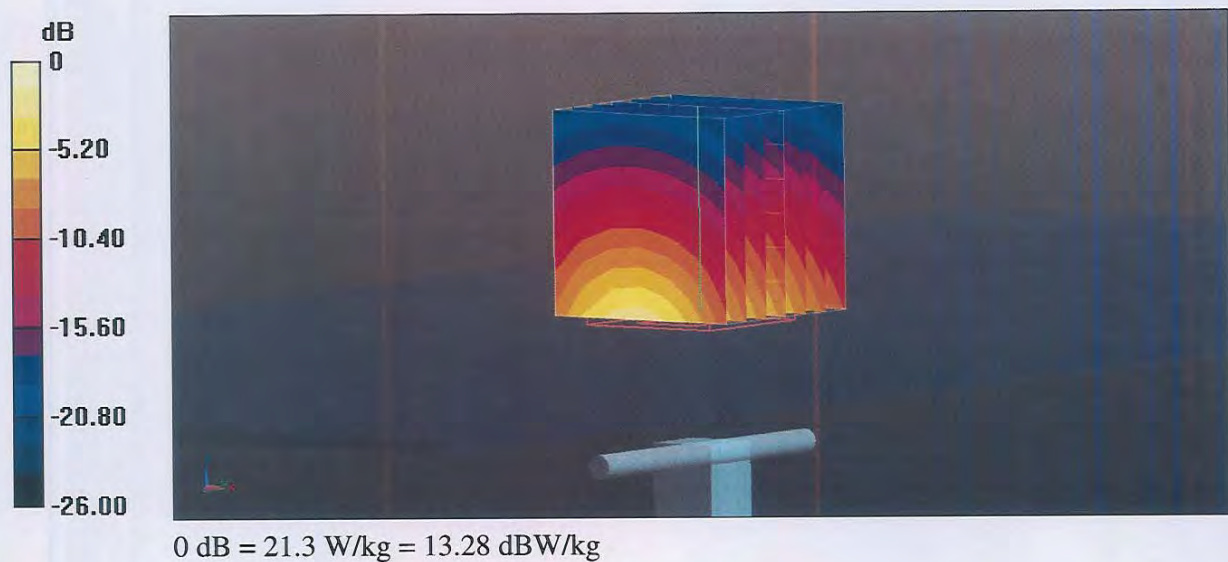
Measurement grid: dx=5mm, dy=5mm, dz=5mm

Reference Value = 112.8 V/m; Power Drift = -0.01 dB

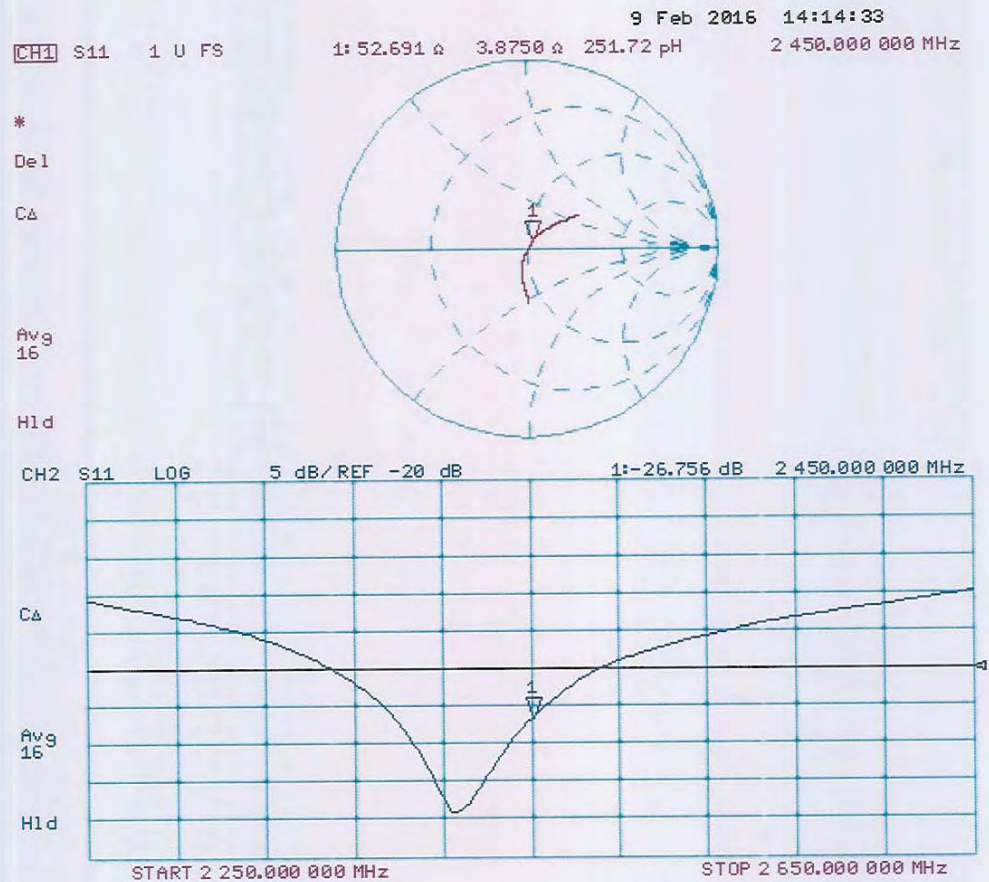
Peak SAR (extrapolated) = 26.5 W/kg

SAR(1 g) = 13 W/kg; SAR(10 g) = 6 W/kg

Maximum value of SAR (measured) = 21.3 W/kg



Impedance Measurement Plot for Head TSL



DASY5 Validation Report for Body TSL

Date: 09.02.2016

Test Laboratory: SPEAG, Zurich, Switzerland

DUT: Dipole 2450 MHz; Type: D2450V2; Serial: D2450V2 - SN: 929

Communication System: UID 0 - CW; Frequency: 2450 MHz

Medium parameters used: $f = 2450$ MHz; $\sigma = 2$ S/m; $\epsilon_r = 52.9$; $\rho = 1000$ kg/m³

Phantom section: Flat Section

Measurement Standard: DASY5 (IEEE/IEC/ANSI C63.19-2011)

DASY52 Configuration:

- Probe: EX3DV4 - SN7349; ConvF(7.79, 7.79, 7.79); Calibrated: 31.12.2015;
- Sensor-Surface: 1.4mm (Mechanical Surface Detection)
- Electronics: DAE4 Sn601; Calibrated: 30.12.2015
- Phantom: Flat Phantom 5.0 (back); Type: QD000P50AA; Serial: 1002
- DASY52 52.8.8(1258); SEMCAD X 14.6.10(7372)

Dipole Calibration for Body Tissue/Pin=250 mW, d=10mm/Zoom Scan (7x7x7)/Cube 0:

Measurement grid: dx=5mm, dy=5mm, dz=5mm

Reference Value = 105.9 V/m; Power Drift = -0.02 dB

Peak SAR (extrapolated) = 25.2 W/kg

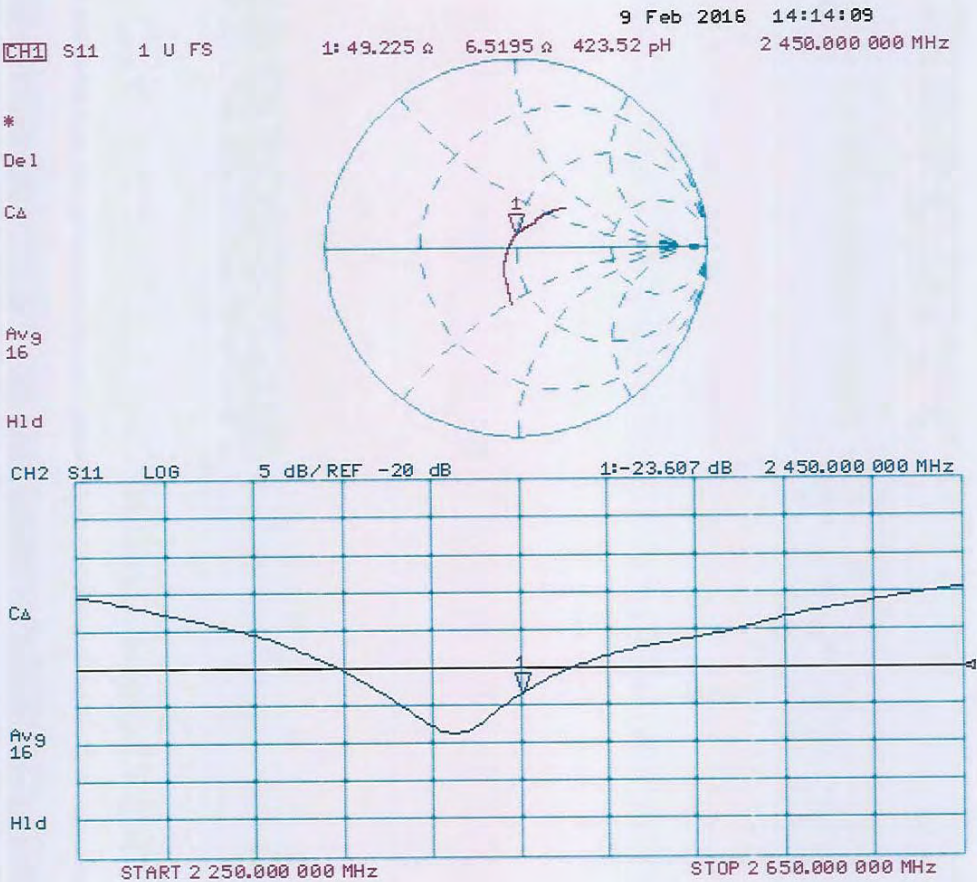
SAR(1 g) = 12.6 W/kg; SAR(10 g) = 5.9 W/kg

Maximum value of SAR (measured) = 20.7 W/kg



0 dB = 20.7 W/kg = 13.16 dBW/kg

Impedance Measurement Plot for Body TSL





Accredited by the Swiss Accreditation Service (SAS)

The Swiss Accreditation Service is one of the signatories to the EA
Multilateral Agreement for the recognition of calibration certificates

Accreditation No.: **SCS 0108**

Client **Sporton-ICC (Auden)**

Certificate No: **D5GHzV2-1171_Feb16**

CALIBRATION CERTIFICATE

Object **D5GHzV2 - SN: 1171**

Calibration procedure(s) **QA CAL-22.v2**
Calibration procedure for dipole validation kits between 3-6 GHz


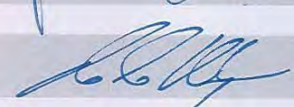
Calibration date: **February 17, 2016**

This calibration certificate documents the traceability to national standards, which realize the physical units of measurements (SI).
The measurements and the uncertainties with confidence probability are given on the following pages and are part of the certificate.

All calibrations have been conducted in the closed laboratory facility: environment temperature (22 ± 3)°C and humidity < 70%.

Calibration Equipment used (M&TE critical for calibration)

| Primary Standards | ID # | Cal Date (Certificate No.) | Scheduled Calibration |
|-----------------------------|--------------------|-----------------------------------|------------------------|
| Power meter EPM-442A | GB37480704 | 07-Oct-15 (No. 217-02222) | Oct-16 |
| Power sensor HP 8481A | US37292783 | 07-Oct-15 (No. 217-02222) | Oct-16 |
| Power sensor HP 8481A | MY41092317 | 07-Oct-15 (No. 217-02223) | Oct-16 |
| Reference 20 dB Attenuator | SN: 5058 (20k) | 01-Apr-15 (No. 217-02131) | Mar-16 |
| Type-N mismatch combination | SN: 5047.2 / 06327 | 01-Apr-15 (No. 217-02134) | Mar-16 |
| Reference Probe EX3DV4 | SN: 3503 | 31-Dec-15 (No. EX3-3503_Dec15) | Dec-16 |
| DAE4 | SN: 601 | 30-Dec-15 (No. DAE4-601_Dec15) | Dec-16 |
| Secondary Standards | ID # | Check Date (in house) | Scheduled Check |
| RF generator R&S SMT-06 | 100972 | 15-Jun-15 (in house check Jun-15) | In house check: Jun-18 |
| Network Analyzer HP 8753E | US37390585 S4206 | 18-Oct-01 (in house check Oct-15) | In house check: Oct-16 |

| | | | |
|----------------|-------------------------------|-----------------------------------|--|
| Calibrated by: | Name Jeton Kastrati | Function Laboratory Technician | Signature  |
| Approved by: | Name Katja Pokovic | Function Technical Manager | Signature  |

Issued: February 19, 2016

This calibration certificate shall not be reproduced except in full without written approval of the laboratory.



Accredited by the Swiss Accreditation Service (SAS)

The Swiss Accreditation Service is one of the signatories to the EA
Multilateral Agreement for the recognition of calibration certificates

Accreditation No.: **SCS 0108**

Glossary:

| | |
|-------|---------------------------------|
| TSL | tissue simulating liquid |
| ConvF | sensitivity in TSL / NORM x,y,z |
| N/A | not applicable or not measured |

Calibration is Performed According to the Following Standards:

- IEEE Std 1528-2013, "IEEE Recommended Practice for Determining the Peak Spatial-Averaged Specific Absorption Rate (SAR) in the Human Head from Wireless Communications Devices: Measurement Techniques", June 2013
- IEC 62209-2, "Procedure to determine the Specific Absorption Rate (SAR) for wireless communication devices used in close proximity to the human body (frequency range of 30 MHz to 6 GHz)", March 2010
- KDB 865664, "SAR Measurement Requirements for 100 MHz to 6 GHz"

Additional Documentation:

- DASY4/5 System Handbook

Methods Applied and Interpretation of Parameters:

- Measurement Conditions:** Further details are available from the Validation Report at the end of the certificate. All figures stated in the certificate are valid at the frequency indicated.
- Antenna Parameters with TSL:** The dipole is mounted with the spacer to position its feed point exactly below the center marking of the flat phantom section, with the arms oriented parallel to the body axis.
- Feed Point Impedance and Return Loss:** These parameters are measured with the dipole positioned under the liquid filled phantom. The impedance stated is transformed from the measurement at the SMA connector to the feed point. The Return Loss ensures low reflected power. No uncertainty required.
- Electrical Delay:** One-way delay between the SMA connector and the antenna feed point. No uncertainty required.
- SAR measured:** SAR measured at the stated antenna input power.
- SAR normalized:** SAR as measured, normalized to an input power of 1 W at the antenna connector.
- SAR for nominal TSL parameters:** The measured TSL parameters are used to calculate the nominal SAR result.

The reported uncertainty of measurement is stated as the standard uncertainty of measurement multiplied by the coverage factor $k=2$, which for a normal distribution corresponds to a coverage probability of approximately 95%.

Measurement Conditions

DASY system configuration, as far as not given on page 1.

| | | |
|-------------------------------------|--|----------------------------------|
| DASY Version | DASY5 | V52.8.8 |
| Extrapolation | Advanced Extrapolation | |
| Phantom | Modular Flat Phantom V5.0 | |
| Distance Dipole Center - TSL | 10 mm | with Spacer |
| Zoom Scan Resolution | dx, dy = 4.0 mm, dz = 1.4 mm | Graded Ratio = 1.4 (Z direction) |
| Frequency | 5200 MHz \pm 1 MHz 5300 MHz \pm 1 MHz 5500 MHz \pm 1 MHz 5600 MHz \pm 1 MHz 5800 MHz \pm 1 MHz | |

Head TSL parameters at 5200 MHz

The following parameters and calculations were applied.

| | Temperature | Permittivity | Conductivity |
|--|---------------------|----------------|----------------------|
| Nominal Head TSL parameters | 22.0 °C | 36.0 | 4.66 mho/m |
| Measured Head TSL parameters | (22.0 \pm 0.2) °C | 34.9 \pm 6 % | 4.52 mho/m \pm 6 % |
| Head TSL temperature change during test | < 0.5 °C | ---- | ---- |

SAR result with Head TSL at 5200 MHz

| SAR averaged over 1 cm³ (1 g) of Head TSL | Condition | |
|---|--------------------|--|
| SAR measured | 100 mW input power | 7.42 W/kg |
| SAR for nominal Head TSL parameters | normalized to 1W | 73.7 W/kg \pm 19.9 % (k=2) |

| SAR averaged over 10 cm³ (10 g) of Head TSL | condition | |
|---|--------------------|--|
| SAR measured | 100 mW input power | 2.16 W/kg |
| SAR for nominal Head TSL parameters | normalized to 1W | 21.4 W/kg \pm 19.5 % (k=2) |

Head TSL parameters at 5300 MHz

The following parameters and calculations were applied.

| | Temperature | Permittivity | Conductivity |
|---|-----------------|--------------|------------------|
| Nominal Head TSL parameters | 22.0 °C | 35.9 | 4.76 mho/m |
| Measured Head TSL parameters | (22.0 ± 0.2) °C | 34.8 ± 6 % | 4.61 mho/m ± 6 % |
| Head TSL temperature change during test | < 0.5 °C | ---- | ---- |

SAR result with Head TSL at 5300 MHz

| | | |
|---|--------------------|-----------------------------------|
| SAR averaged over 1 cm³ (1 g) of Head TSL | Condition | |
| SAR measured | 100 mW input power | 7.91 W/kg |
| SAR for nominal Head TSL parameters | normalized to 1W | 78.5 W / kg ± 19.9 % (k=2) |

| | | |
|---|--------------------|---------------------------------|
| SAR averaged over 10 cm³ (10 g) of Head TSL | condition | |
| SAR measured | 100 mW input power | 2.30 W/kg |
| SAR for nominal Head TSL parameters | normalized to 1W | 22.8 W/kg ± 19.5 % (k=2) |

Head TSL parameters at 5500 MHz

The following parameters and calculations were applied.

| | Temperature | Permittivity | Conductivity |
|---|-----------------|--------------|------------------|
| Nominal Head TSL parameters | 22.0 °C | 35.6 | 4.96 mho/m |
| Measured Head TSL parameters | (22.0 ± 0.2) °C | 34.5 ± 6 % | 4.81 mho/m ± 6 % |
| Head TSL temperature change during test | < 0.5 °C | ---- | ---- |

SAR result with Head TSL at 5500 MHz

| | | |
|---|--------------------|---------------------------------|
| SAR averaged over 1 cm³ (1 g) of Head TSL | Condition | |
| SAR measured | 100 mW input power | 7.74 W/kg |
| SAR for nominal Head TSL parameters | normalized to 1W | 76.8 W/kg ± 19.9 % (k=2) |

| | | |
|---|--------------------|---------------------------------|
| SAR averaged over 10 cm³ (10 g) of Head TSL | condition | |
| SAR measured | 100 mW input power | 2.23 W/kg |
| SAR for nominal Head TSL parameters | normalized to 1W | 22.1 W/kg ± 19.5 % (k=2) |

Head TSL parameters at 5600 MHz

The following parameters and calculations were applied.

| | Temperature | Permittivity | Conductivity |
|---|-----------------|--------------|------------------|
| Nominal Head TSL parameters | 22.0 °C | 35.5 | 5.07 mho/m |
| Measured Head TSL parameters | (22.0 ± 0.2) °C | 34.3 ± 6 % | 4.91 mho/m ± 6 % |
| Head TSL temperature change during test | < 0.5 °C | ---- | ---- |

SAR result with Head TSL at 5600 MHz

| | | |
|---|--------------------|---------------------------------|
| SAR averaged over 1 cm³ (1 g) of Head TSL | Condition | |
| SAR measured | 100 mW input power | 8.08 W/kg |
| SAR for nominal Head TSL parameters | normalized to 1W | 80.1 W/kg ± 19.9 % (k=2) |

| | | |
|---|--------------------|---------------------------------|
| SAR averaged over 10 cm³ (10 g) of Head TSL | condition | |
| SAR measured | 100 mW input power | 2.33 W/kg |
| SAR for nominal Head TSL parameters | normalized to 1W | 23.1 W/kg ± 19.5 % (k=2) |

Head TSL parameters at 5800 MHz

The following parameters and calculations were applied.

| | Temperature | Permittivity | Conductivity |
|---|-----------------|--------------|------------------|
| Nominal Head TSL parameters | 22.0 °C | 35.3 | 5.27 mho/m |
| Measured Head TSL parameters | (22.0 ± 0.2) °C | 34.1 ± 6 % | 5.12 mho/m ± 6 % |
| Head TSL temperature change during test | < 0.5 °C | ---- | ---- |

SAR result with Head TSL at 5800 MHz

| | | |
|---|--------------------|---------------------------------|
| SAR averaged over 1 cm³ (1 g) of Head TSL | Condition | |
| SAR measured | 100 mW input power | 7.58 W/kg |
| SAR for nominal Head TSL parameters | normalized to 1W | 75.2 W/kg ± 19.9 % (k=2) |

| | | |
|---|--------------------|---------------------------------|
| SAR averaged over 10 cm³ (10 g) of Head TSL | condition | |
| SAR measured | 100 mW input power | 2.17 W/kg |
| SAR for nominal Head TSL parameters | normalized to 1W | 21.5 W/kg ± 19.5 % (k=2) |

Body TSL parameters at 5200 MHz

The following parameters and calculations were applied.

| | Temperature | Permittivity | Conductivity |
|---|-----------------|--------------|------------------|
| Nominal Body TSL parameters | 22.0 °C | 49.0 | 5.30 mho/m |
| Measured Body TSL parameters | (22.0 ± 0.2) °C | 47.2 ± 6 % | 5.40 mho/m ± 6 % |
| Body TSL temperature change during test | < 0.5 °C | ---- | ---- |

SAR result with Body TSL at 5200 MHz

| | | |
|---|--------------------|---------------------------------|
| SAR averaged over 1 cm ³ (1 g) of Body TSL | Condition | |
| SAR measured | 100 mW input power | 7.41 W/kg |
| SAR for nominal Body TSL parameters | normalized to 1W | 73.6 W/kg ± 19.9 % (k=2) |

| | | |
|---|--------------------|---------------------------------|
| SAR averaged over 10 cm ³ (10 g) of Body TSL | condition | |
| SAR measured | 100 mW input power | 2.09 W/kg |
| SAR for nominal Body TSL parameters | normalized to 1W | 20.7 W/kg ± 19.5 % (k=2) |

Body TSL parameters at 5300 MHz

The following parameters and calculations were applied.

| | Temperature | Permittivity | Conductivity |
|---|-----------------|--------------|------------------|
| Nominal Body TSL parameters | 22.0 °C | 48.9 | 5.42 mho/m |
| Measured Body TSL parameters | (22.0 ± 0.2) °C | 47.0 ± 6 % | 5.53 mho/m ± 6 % |
| Body TSL temperature change during test | < 0.5 °C | ---- | ---- |

SAR result with Body TSL at 5300 MHz

| | | |
|---|--------------------|---------------------------------|
| SAR averaged over 1 cm ³ (1 g) of Body TSL | Condition | |
| SAR measured | 100 mW input power | 7.69 W/kg |
| SAR for nominal Body TSL parameters | normalized to 1W | 76.3 W/kg ± 19.9 % (k=2) |

| | | |
|---|--------------------|---------------------------------|
| SAR averaged over 10 cm ³ (10 g) of Body TSL | condition | |
| SAR measured | 100 mW input power | 2.17 W/kg |
| SAR for nominal Body TSL parameters | normalized to 1W | 21.5 W/kg ± 19.5 % (k=2) |

Body TSL parameters at 5500 MHz

The following parameters and calculations were applied.

| | Temperature | Permittivity | Conductivity |
|---|-----------------|--------------|------------------|
| Nominal Body TSL parameters | 22.0 °C | 48.6 | 5.65 mho/m |
| Measured Body TSL parameters | (22.0 ± 0.2) °C | 46.6 ± 6 % | 5.80 mho/m ± 6 % |
| Body TSL temperature change during test | < 0.5 °C | ---- | ---- |

SAR result with Body TSL at 5500 MHz

| | | |
|---|--------------------|---------------------------------|
| SAR averaged over 1 cm ³ (1 g) of Body TSL | Condition | |
| SAR measured | 100 mW input power | 7.95 W/kg |
| SAR for nominal Body TSL parameters | normalized to 1W | 78.9 W/kg ± 19.9 % (k=2) |

| | | |
|---|--------------------|---------------------------------|
| SAR averaged over 10 cm ³ (10 g) of Body TSL | condition | |
| SAR measured | 100 mW input power | 2.22 W/kg |
| SAR for nominal Body TSL parameters | normalized to 1W | 22.0 W/kg ± 19.5 % (k=2) |

Body TSL parameters at 5600 MHz

The following parameters and calculations were applied.

| | Temperature | Permittivity | Conductivity |
|---|-----------------|--------------|------------------|
| Nominal Body TSL parameters | 22.0 °C | 48.5 | 5.77 mho/m |
| Measured Body TSL parameters | (22.0 ± 0.2) °C | 46.4 ± 6 % | 5.94 mho/m ± 6 % |
| Body TSL temperature change during test | < 0.5 °C | ---- | ---- |

SAR result with Body TSL at 5600 MHz

| | | |
|---|--------------------|---------------------------------|
| SAR averaged over 1 cm ³ (1 g) of Body TSL | Condition | |
| SAR measured | 100 mW input power | 8.04 W/kg |
| SAR for nominal Body TSL parameters | normalized to 1W | 79.8 W/kg ± 19.9 % (k=2) |

| | | |
|---|--------------------|---------------------------------|
| SAR averaged over 10 cm ³ (10 g) of Body TSL | condition | |
| SAR measured | 100 mW input power | 2.26 W/kg |
| SAR for nominal Body TSL parameters | normalized to 1W | 22.4 W/kg ± 19.5 % (k=2) |

Body TSL parameters at 5800 MHz

The following parameters and calculations were applied.

| | Temperature | Permittivity | Conductivity |
|---|-----------------|--------------|------------------|
| Nominal Body TSL parameters | 22.0 °C | 48.2 | 6.00 mho/m |
| Measured Body TSL parameters | (22.0 ± 0.2) °C | 46.1 ± 6 % | 6.22 mho/m ± 6 % |
| Body TSL temperature change during test | < 0.5 °C | ---- | ---- |

SAR result with Body TSL at 5800 MHz

| | | |
|---|--------------------|---------------------------------|
| SAR averaged over 1 cm³ (1 g) of Body TSL | Condition | |
| SAR measured | 100 mW input power | 7.62 W/kg |
| SAR for nominal Body TSL parameters | normalized to 1W | 75.6 W/kg ± 19.9 % (k=2) |

| | | |
|---|--------------------|---------------------------------|
| SAR averaged over 10 cm³ (10 g) of Body TSL | condition | |
| SAR measured | 100 mW input power | 2.13 W/kg |
| SAR for nominal Body TSL parameters | normalized to 1W | 21.1 W/kg ± 19.5 % (k=2) |

Appendix (Additional assessments outside the scope of SCS 0108)

Antenna Parameters with Head TSL at 5200 MHz

| | |
|--------------------------------------|---------------------------------|
| Impedance, transformed to feed point | 49.5 Ω - 10.7 j Ω |
| Return Loss | - 19.4 dB |

Antenna Parameters with Head TSL at 5300 MHz

| | |
|--------------------------------------|--------------------------------|
| Impedance, transformed to feed point | 49.2 Ω - 6.9 j Ω |
| Return Loss | - 23.1 dB |

Antenna Parameters with Head TSL at 5500 MHz

| | |
|--------------------------------------|--------------------------------|
| Impedance, transformed to feed point | 51.2 Ω - 5.8 j Ω |
| Return Loss | - 24.7 dB |

Antenna Parameters with Head TSL at 5600 MHz

| | |
|--------------------------------------|--------------------------------|
| Impedance, transformed to feed point | 55.5 Ω - 5.1 j Ω |
| Return Loss | - 23.0 dB |

Antenna Parameters with Head TSL at 5800 MHz

| | |
|--------------------------------------|--------------------------------|
| Impedance, transformed to feed point | 53.7 Ω - 6.5 j Ω |
| Return Loss | - 22.9 dB |

Antenna Parameters with Body TSL at 5200 MHz

| | |
|--------------------------------------|--------------------------------|
| Impedance, transformed to feed point | 48.4 Ω - 8.3 j Ω |
| Return Loss | - 21.4 dB |

Antenna Parameters with Body TSL at 5300 MHz

| | |
|--------------------------------------|--------------------------------|
| Impedance, transformed to feed point | 48.7 Ω - 5.8 j Ω |
| Return Loss | - 24.4 dB |

Antenna Parameters with Body TSL at 5500 MHz

| | |
|--------------------------------------|--------------------------------|
| Impedance, transformed to feed point | 50.4 Ω - 4.4 j Ω |
| Return Loss | - 27.2 dB |

Antenna Parameters with Body TSL at 5600 MHz

| | |
|--------------------------------------|--------------------------------|
| Impedance, transformed to feed point | 55.4 Ω - 2.8 j Ω |
| Return Loss | - 24.8 dB |

Antenna Parameters with Body TSL at 5800 MHz

| | |
|--------------------------------------|--------------------------------|
| Impedance, transformed to feed point | 54.7 Ω - 5.5 j Ω |
| Return Loss | - 23.2 dB |

General Antenna Parameters and Design

| | |
|----------------------------------|----------|
| Electrical Delay (one direction) | 1.206 ns |
|----------------------------------|----------|

After long term use with 100W radiated power, only a slight warming of the dipole near the feedpoint can be measured.

The dipole is made of standard semirigid coaxial cable. The center conductor of the feeding line is directly connected to the second arm of the dipole. The antenna is therefore short-circuited for DC-signals. On some of the dipoles, small end caps are added to the dipole arms in order to improve matching when loaded according to the position as explained in the "Measurement Conditions" paragraph. The SAR data are not affected by this change. The overall dipole length is still according to the Standard.

No excessive force must be applied to the dipole arms, because they might bend or the soldered connections near the feedpoint may be damaged.

Additional EUT Data

| | |
|-----------------|-------------------|
| Manufactured by | SPEAG |
| Manufactured on | December 09, 2013 |

DASY5 Validation Report for Head TSL

Date: 11.02.2016

Test Laboratory: SPEAG, Zurich, Switzerland

DUT: Dipole D5GHzV2; Type: D5GHzV2; Serial: D5GHzV2 - SN:1171

Communication System: UID 0 - CW; Frequency: 5200 MHz, Frequency: 5300 MHz, Frequency: 5500 MHz, Frequency: 5600 MHz, Frequency: 5800 MHz

Medium parameters used: $f = 5200$ MHz; $\sigma = 4.52$ S/m; $\epsilon_r = 34.9$; $\rho = 1000$ kg/m³, Medium parameters used: $f = 5300$ MHz; $\sigma = 4.61$ S/m; $\epsilon_r = 34.8$; $\rho = 1000$ kg/m³, Medium parameters used: $f = 5500$ MHz; $\sigma = 4.81$ S/m; $\epsilon_r = 34.5$; $\rho = 1000$ kg/m³, Medium parameters used: $f = 5600$ MHz; $\sigma = 4.91$ S/m; $\epsilon_r = 34.3$; $\rho = 1000$ kg/m³, Medium parameters used: $f = 5800$ MHz; $\sigma = 5.12$ S/m; $\epsilon_r = 34.1$; $\rho = 1000$ kg/m³

Phantom section: Flat Section

Measurement Standard: DASY5 (IEEE/IEC/ANSI C63.19-2011)

DASY52 Configuration:

- Probe: EX3DV4 - SN3503; ConvF(5.59, 5.59, 5.59); Calibrated: 31.12.2015, ConvF(5.25, 5.25, 5.25); Calibrated: 31.12.2015, ConvF(5.18, 5.18, 5.18); Calibrated: 31.12.2015, ConvF(4.99, 4.99, 4.99); Calibrated: 31.12.2015, ConvF(4.95, 4.95, 4.95); Calibrated: 31.12.2015;
- Sensor-Surface: 1.4mm (Mechanical Surface Detection)
- Electronics: DAE4 Sn601; Calibrated: 30.12.2015
- Phantom: Flat Phantom 5.0 (front); Type: QD000P50AA; Serial: 1001
- DASY52 52.8.8(1258); SEMCAD X 14.6.10(7372)

Dipole Calibration for Head Tissue/Pin=100mW, dist=10mm, f=5200 MHz/Zoom Scan, dist=1.4mm (8x8x7)/Cube 0: Measurement grid: dx=4mm, dy=4mm, dz=1.4mm

Reference Value = 70.14 V/m; Power Drift = 0.07 dB

Peak SAR (extrapolated) = 26.9 W/kg

SAR(1 g) = 7.42 W/kg; SAR(10 g) = 2.16 W/kg

Maximum value of SAR (measured) = 17.0 W/kg

Dipole Calibration for Head Tissue/Pin=100mW, dist=10mm, f=5300 MHz/Zoom Scan, dist=1.4mm (8x8x7)/Cube 0: Measurement grid: dx=4mm, dy=4mm, dz=1.4mm

Reference Value = 71.75 V/m; Power Drift = 0.05 dB

Peak SAR (extrapolated) = 29.8 W/kg

SAR(1 g) = 7.91 W/kg; SAR(10 g) = 2.3 W/kg

Maximum value of SAR (measured) = 18.4 W/kg

Dipole Calibration for Head Tissue/Pin=100mW, dist=10mm, f=5500 MHz/Zoom Scan, dist=1.4mm (8x8x7)/Cube 0: Measurement grid: dx=4mm, dy=4mm, dz=1.4mm

Reference Value = 70.33 V/m; Power Drift = 0.00 dB

Peak SAR (extrapolated) = 30.3 W/kg

SAR(1 g) = 7.74 W/kg; SAR(10 g) = 2.23 W/kg

Maximum value of SAR (measured) = 18.2 W/kg

Dipole Calibration for Head Tissue/Pin=100mW, dist=10mm, f=5600 MHz/Zoom Scan, dist=1.4mm (8x8x7)/Cube 0: Measurement grid: dx=4mm, dy=4mm, dz=1.4mm

Reference Value = 71.19 V/m; Power Drift = 0.05 dB

Peak SAR (extrapolated) = 32.0 W/kg

SAR(1 g) = 8.08 W/kg; SAR(10 g) = 2.33 W/kg

Maximum value of SAR (measured) = 19.2 W/kg

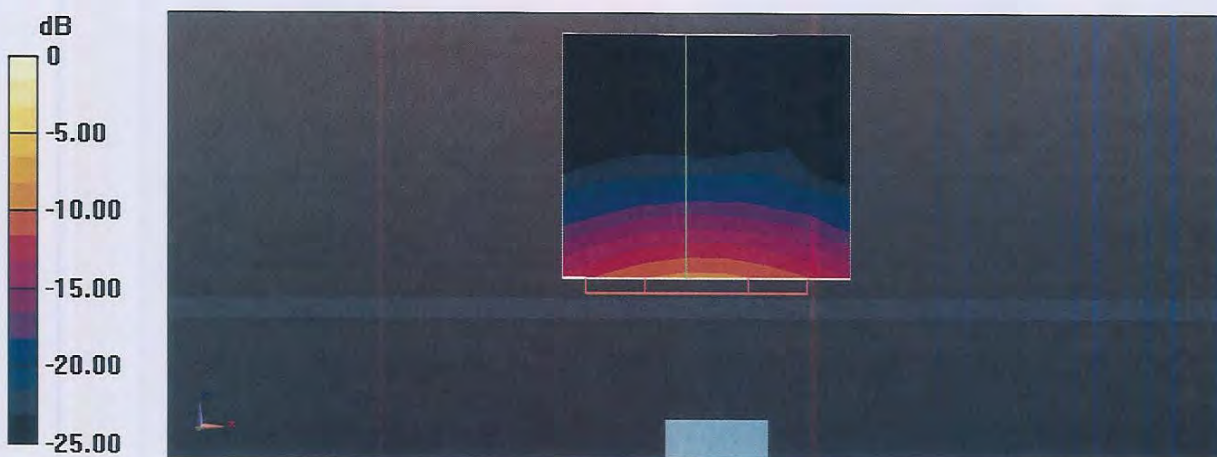
Dipole Calibration for Head Tissue/Pin=100mW, dist=10mm, f=5800 MHz/Zoom Scan, dist=1.4mm (8x8x7)/Cube 0: Measurement grid: dx=4mm, dy=4mm, dz=1.4mm

Reference Value = 68.67 V/m; Power Drift = 0.04 dB

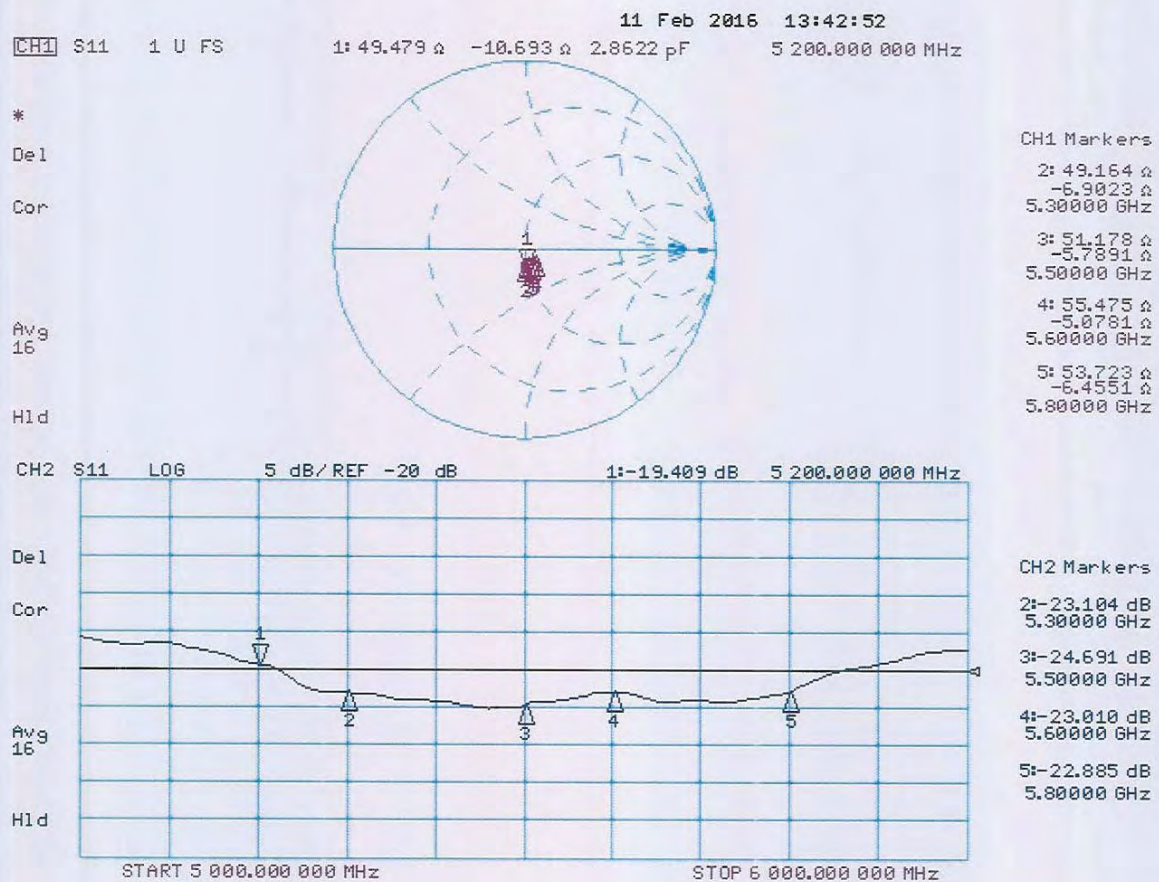
Peak SAR (extrapolated) = 31.3 W/kg

SAR(1 g) = 7.58 W/kg; SAR(10 g) = 2.17 W/kg

Maximum value of SAR (measured) = 18.3 W/kg



Impedance Measurement Plot for Head TSL



DASY5 Validation Report for Body TSL

Date: 17.02.2016

Test Laboratory: SPEAG, Zurich, Switzerland

DUT: Dipole 5GHz; Type: D5GHzV2; Serial: D5GHzV2 - SN: 1171

Communication System: UID 0 - CW; Frequency: 5200 MHz, Frequency: 5300 MHz, Frequency: 5500 MHz, Frequency: 5600 MHz, Frequency: 5800 MHz

Medium parameters used: $f = 5200$ MHz; $\sigma = 5.4$ S/m; $\epsilon_r = 47.2$; $\rho = 1000$ kg/m³, Medium parameters used: $f = 5300$ MHz; $\sigma = 5.53$ S/m; $\epsilon_r = 47$; $\rho = 1000$ kg/m³, Medium parameters used: $f = 5500$ MHz; $\sigma = 5.8$ S/m; $\epsilon_r = 46.6$; $\rho = 1000$ kg/m³, Medium parameters used: $f = 5600$ MHz; $\sigma = 5.94$ S/m; $\epsilon_r = 46.4$; $\rho = 1000$ kg/m³, Medium parameters used: $f = 5800$ MHz; $\sigma = 6.22$ S/m; $\epsilon_r = 46.1$; $\rho = 1000$ kg/m³

Phantom section: Flat Section

Measurement Standard: DASY5 (IEEE/IEC/ANSI C63.19-2011)

DASY52 Configuration:

- Probe: EX3DV4 - SN3503; ConvF(4.99, 4.99, 4.99); Calibrated: 31.12.2015, ConvF(4.75, 4.75, 4.75); Calibrated: 31.12.2015, ConvF(4.4, 4.4, 4.4); Calibrated: 31.12.2015, ConvF(4.35, 4.35, 4.35); Calibrated: 31.12.2015, ConvF(4.27, 4.27, 4.27); Calibrated: 31.12.2015;
- Sensor-Surface: 1.4mm (Mechanical Surface Detection)
- Electronics: DAE4 Sn601; Calibrated: 30.12.2015
- Phantom: Flat Phantom 5.0 (back); Type: QD000P50AA; Serial: 1002
- DASY52 52.8.8(1258); SEMCAD X 14.6.10(7372)

Dipole Calibration for Body Tissue/Pin=100mW, dist=10mm, f=5200 MHz/Zoom Scan, dist=1.4mm (8x8x7)/Cube 0: Measurement grid: dx=4mm, dy=4mm, dz=1.4mm

Reference Value = 66.49 V/m; Power Drift = -0.03 dB

Peak SAR (extrapolated) = 27.3 W/kg

SAR(1 g) = 7.41 W/kg; SAR(10 g) = 2.09 W/kg

Maximum value of SAR (measured) = 16.7 W/kg

Dipole Calibration for Body Tissue/Pin=100mW, dist=10mm, f=5300 MHz/Zoom Scan, dist=1.4mm (8x8x7)/Cube 0: Measurement grid: dx=4mm, dy=4mm, dz=1.4mm

Reference Value = 67.24 V/m; Power Drift = -0.00 dB

Peak SAR (extrapolated) = 29.1 W/kg

SAR(1 g) = 7.69 W/kg; SAR(10 g) = 2.17 W/kg

Maximum value of SAR (measured) = 17.6 W/kg

Dipole Calibration for Body Tissue/Pin=100mW, dist=10mm, f=5500 MHz/Zoom Scan, dist=1.4mm (8x8x7)/Cube 0: Measurement grid: dx=4mm, dy=4mm, dz=1.4mm

Reference Value = 67.55 V/m; Power Drift = -0.03 dB

Peak SAR (extrapolated) = 32.0 W/kg

SAR(1 g) = 7.95 W/kg; SAR(10 g) = 2.22 W/kg

Maximum value of SAR (measured) = 18.7 W/kg

Dipole Calibration for Body Tissue/Pin=100mW, dist=10mm, f=5600 MHz/Zoom Scan, dist=1.4mm (8x8x7)/Cube 0: Measurement grid: dx=4mm, dy=4mm, dz=1.4mm

Reference Value = 67.31 V/m; Power Drift = -0.00 dB

Peak SAR (extrapolated) = 32.8 W/kg

SAR(1 g) = 8.04 W/kg; SAR(10 g) = 2.26 W/kg

Maximum value of SAR (measured) = 18.9 W/kg

Dipole Calibration for Body Tissue/Pin=100mW, dist=10mm, f=5800 MHz/Zoom Scan, dist=1.4mm (8x8x7)/Cube 0: Measurement grid: dx=4mm, dy=4mm, dz=1.4mm

Reference Value = 65.02 V/m; Power Drift = 0.01 dB

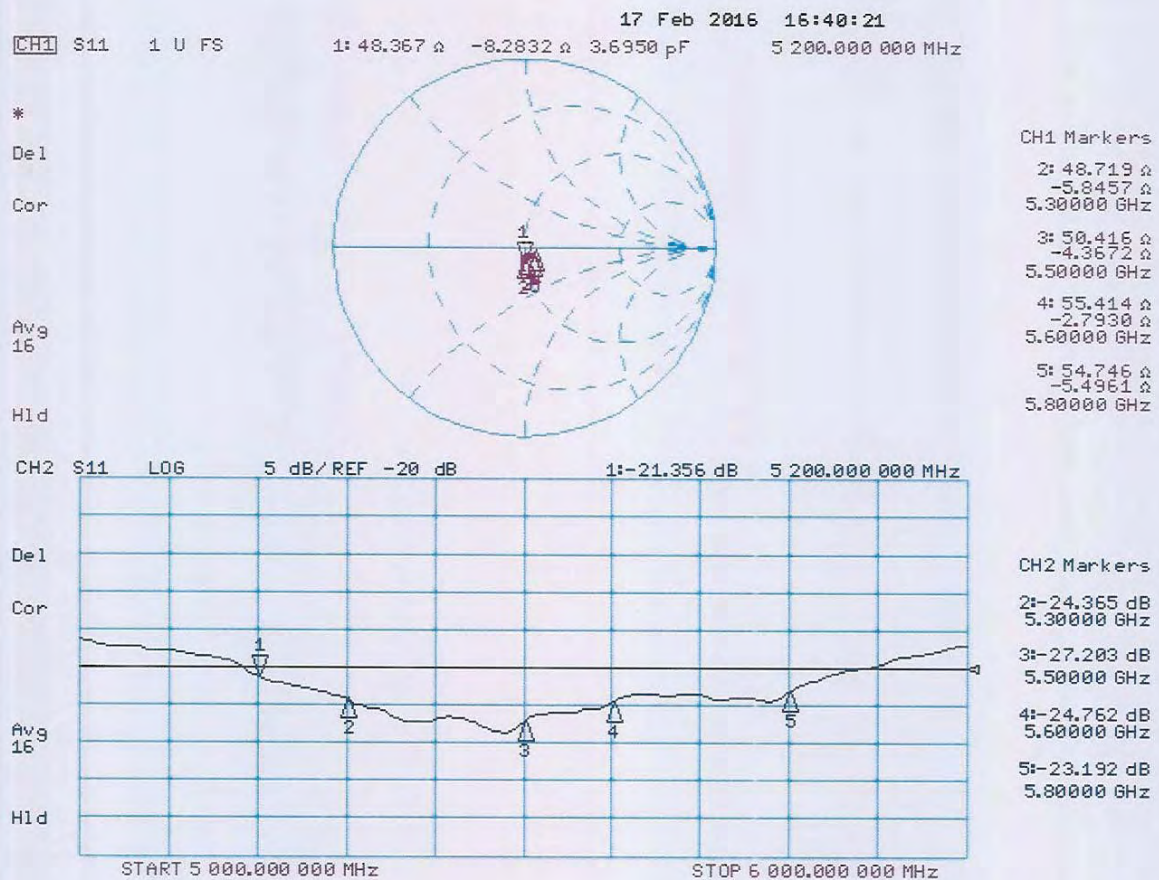
Peak SAR (extrapolated) = 32.8 W/kg

SAR(1 g) = 7.62 W/kg; SAR(10 g) = 2.13 W/kg

Maximum value of SAR (measured) = 18.3 W/kg



Impedance Measurement Plot for Body TSL





Accredited by the Swiss Accreditation Service (SAS)

The Swiss Accreditation Service is one of the signatories to the EA
Multilateral Agreement for the recognition of calibration certificates

Accreditation No.: **SCS 0108**

Client **Sporton-ICC (Auden)**

Certificate No: **EX3-3976_Feb16**

CALIBRATION CERTIFICATE

Object **EX3DV4 - SN:3976**

Calibration procedure(s) **QA CAL-01.v9, QA CAL-14.v4, QA CAL-23.v5, QA CAL-25.v6**
Calibration procedure for dosimetric E-field probes

Calibration date: **February 22, 2016**

This calibration certificate documents the traceability to national standards, which realize the physical units of measurements (SI).
The measurements and the uncertainties with confidence probability are given on the following pages and are part of the certificate.

All calibrations have been conducted in the closed laboratory facility: environment temperature $(22 \pm 3)^{\circ}\text{C}$ and humidity $< 70\%$.

Calibration Equipment used (M&TE critical for calibration)

| Primary Standards | ID | Cal Date (Certificate No.) | Scheduled Calibration |
|----------------------------|-----------------|-----------------------------------|------------------------|
| Power meter E4419B | GB41293874 | 01-Apr-15 (No. 217-02128) | Mar-16 |
| Power sensor E4412A | MY41498087 | 01-Apr-15 (No. 217-02128) | Mar-16 |
| Reference 3 dB Attenuator | SN: S5054 (3c) | 01-Apr-15 (No. 217-02129) | Mar-16 |
| Reference 20 dB Attenuator | SN: S5277 (20x) | 01-Apr-15 (No. 217-02132) | Mar-16 |
| Reference 30 dB Attenuator | SN: S5129 (30b) | 01-Apr-15 (No. 217-02133) | Mar-16 |
| Reference Probe ES3DV2 | SN: 3013 | 31-Dec-15 (No. ES3-3013_Dec15) | Dec-16 |
| DAE4 | SN: 660 | 23-Dec-15 (No. DAE4-660_Dec15) | Dec-16 |
| Secondary Standards | ID | Check Date (in house) | Scheduled Check |
| RF generator HP 8648C | US3642U01700 | 4-Aug-99 (in house check Apr-13) | In house check: Apr-16 |
| Network Analyzer HP 8753E | US37390585 | 18-Oct-01 (in house check Oct-15) | In house check: Oct-16 |

| | Name | Function | Signature |
|---|----------------|-----------------------|-----------|
| Calibrated by: | Jeton Kastrati | Laboratory Technician | |
| Approved by: | Katja Pokovic | Technical Manager | |
| Issued: February 22, 2016 | | | |
| This calibration certificate shall not be reproduced except in full without written approval of the laboratory. | | | |



Accredited by the Swiss Accreditation Service (SAS)

The Swiss Accreditation Service is one of the signatories to the EA
Multilateral Agreement for the recognition of calibration certificates

Accreditation No.: **SCS 0108**

Glossary:

| | |
|--------------------------|---|
| TSL | tissue simulating liquid |
| NORM _{x,y,z} | sensitivity in free space |
| ConvF | sensitivity in TSL / NORM _{x,y,z} |
| DCP | diode compression point |
| CF | crest factor (1/duty_cycle) of the RF signal |
| A, B, C, D | modulation dependent linearization parameters |
| Polarization ϕ | ϕ rotation around probe axis |
| Polarization ϑ | ϑ rotation around an axis that is in the plane normal to probe axis (at measurement center), i.e., $\vartheta = 0$ is normal to probe axis |
| Connector Angle | information used in DASY system to align probe sensor X to the robot coordinate system |

Calibration is Performed According to the Following Standards:

- IEEE Std 1528-2013, "IEEE Recommended Practice for Determining the Peak Spatial-Averaged Specific Absorption Rate (SAR) in the Human Head from Wireless Communications Devices: Measurement Techniques", June 2013
- IEC 62209-1, "Procedure to measure the Specific Absorption Rate (SAR) for hand-held devices used in close proximity to the ear (frequency range of 300 MHz to 3 GHz)", February 2005
- IEC 62209-2, "Procedure to determine the Specific Absorption Rate (SAR) for wireless communication devices used in close proximity to the human body (frequency range of 30 MHz to 6 GHz)", March 2010
- KDB 865664, "SAR Measurement Requirements for 100 MHz to 6 GHz"

Methods Applied and Interpretation of Parameters:

- NORM_{x,y,z}**: Assessed for E-field polarization $\vartheta = 0$ ($f \leq 900$ MHz in TEM-cell; $f > 1800$ MHz: R22 waveguide). NORM_{x,y,z} are only intermediate values, i.e., the uncertainties of NORM_{x,y,z} does not affect the E²-field uncertainty inside TSL (see below ConvF).
- NORM(*f*)_{x,y,z}** = NORM_{x,y,z} * frequency_response (see Frequency Response Chart). This linearization is implemented in DASY4 software versions later than 4.2. The uncertainty of the frequency response is included in the stated uncertainty of ConvF.
- DCP_{x,y,z}**: DCP are numerical linearization parameters assessed based on the data of power sweep with CW signal (no uncertainty required). DCP does not depend on frequency nor media.
- PAR**: PAR is the Peak to Average Ratio that is not calibrated but determined based on the signal characteristics
- A_{x,y,z}, B_{x,y,z}, C_{x,y,z}, D_{x,y,z}, VR_{x,y,z}**: A, B, C, D are numerical linearization parameters assessed based on the data of power sweep for specific modulation signal. The parameters do not depend on frequency nor media. VR is the maximum calibration range expressed in RMS voltage across the diode.
- ConvF and Boundary Effect Parameters**: Assessed in flat phantom using E-field (or Temperature Transfer Standard for $f \leq 800$ MHz) and inside waveguide using analytical field distributions based on power measurements for $f > 800$ MHz. The same setups are used for assessment of the parameters applied for boundary compensation (alpha, depth) of which typical uncertainty values are given. These parameters are used in DASY4 software to improve probe accuracy close to the boundary. The sensitivity in TSL corresponds to NORM_{x,y,z} * ConvF whereby the uncertainty corresponds to that given for ConvF. A frequency dependent ConvF is used in DASY version 4.4 and higher which allows extending the validity from ± 50 MHz to ± 100 MHz.
- Spherical isotropy (3D deviation from isotropy)**: in a field of low gradients realized using a flat phantom exposed by a patch antenna.
- Sensor Offset**: The sensor offset corresponds to the offset of virtual measurement center from the probe tip (on probe axis). No tolerance required.
- Connector Angle**: The angle is assessed using the information gained by determining the NORM_x (no uncertainty required).