

Usage of memory card/touch screen

Memory card

1.Connect USB and open USB storage device
After connecting USB, following interface would pop. Select USB connected-
open USB storage device:



2.View and edit files in memory card on PC client.

Usage of touch screen

Click: you can select icon or application by clicking function.
In main menu, click it to open dial.
Click twice: zoom in or out. Click it twice to zoom in or out pictures or pictures on website.
Long press: long press it to obtain more operation interface, icons or input column.
1)Long press a picture. It would prompt selection in status bar to share or delete it.
2)Long press icon of main menu to move it to main screen.
3)Long press blank space to select source of wallpaper.
Drag screen: drag it to view hidden information when all information could not be viewed;
Slide screen: slide screen to view hidden information when all information would not be viewed.

Main menu

You can use all functions by touching the screen. Click application icons to open it. Click main menu to view all applications.
There five screens, switching them by sliding. You can set wallpaper at any place. Click Back to main menu.



◆ Add shortcuts and widgets

Click the main menu with pop-up of application list. Long click the application icon to add shortcut. Blue transparency box would pop. Drag application icon to required place and loose it to complete the operation. Method of adding widgets is same with that of shortcuts. Applications and widgets would be switched by clicking applications, widgets or sliding the screen as follows:



Main menu

◆ Delete shortcuts and widgets

Long click the application to be deleted. Drag it above the screen until the icon is red. Application would be deleted as follows:



◆ Lock screen

Click Power to lock the phone to avoid unexpected operations and conserve energy.
The phone would be locked automatically for long-term nonuse.

◆ Wallpaper

Long click main menu and “select wallpaper” would pop. Click Wallpaper/Live Wallpaper/Video Live Wallpaper/Pictures as follows:



Notifications

◆ Unlock & open camera

Press Power to unlock menu. Drag the icon to the right to unlock (drag it to the left to open camera) as follows:



Notifications

Drag Status Bar to open notifications and view unread messages. Click menu icon at top right to adjust brightness and standby state, open and close auto screen rotation, WLAN, Bluetooth, GPS, data connection, off-line mode, available switch standard/mute/conference/outside as follows:



Manage applications/recently used applications/extend battery life

Manage applications

Install Applications: find and click Install Software (.APK) in File Manager/Settings- Storage- APK installer (you can select “first installation location” and “default memory”).
Uninstall applications: click one application in Settings- Applications- Download/SD card/All for un-installation or other operations.

Recently used applications

Long press HOME to view recently used applications, such as Music, Camera, Settings. Click application toolbar to delete all recent tracks.



Extend battery life

Many applications would increase power consumption and shorten battery life. You can:
Close those wireless communications for no connection of Bluetooth, WI-FI or GPS;
Turn down screen lightness and set short screen timeout to conserve energy; or turn off screen for nonuse;
Close auto synchronization of Email, calendar, contacts or other applications. Other applications would shorten the battery life.



Quick instructions

Note: The device has no ad-hoc function.

The SAR limit of USA (FCC) is 1.6 W/kg averaged over one gram of tissue. Device types: A9 (FCC ID: 2ACDBJEASUNGA9) has also been tested against this SAR limit. The highest SAR value reported under this standard during product certification for use at the ear is 0.719W/kg and when properly worn on the body is 1.091W/kg. This device was tested for typical body-worn operations with the back of the handset kept 0.5 cm from the body. To maintain compliance with FCC RF exposure requirements, use accessories that maintain a 0.5cm separation distance between the user's body and the back of the handset. The use of belt clips, holsters and similar accessories should not contain metallic components in its assembly. The use of accessories that do not satisfy these requirements may not comply with FCC RF exposure requirements, and should be avoided.

This device complies with part 15 of the FCC rules. Operation is subject to the following two conditions: (1) this device may not cause harmful interference, and (2) this device must accept any interference received including interference that may cause undesired operation.

NOTE: The manufacturer is not responsible for any radio or TV interference caused by unauthorized changes and modifications to this equipment. Such changes and modifications could void the user's authority to operate the equipment.

NOTE: This equipment has been tested and found to comply with the limits for a Class B digital device, pursuant to part 15 of the FCC Rules. These limits are designed to provide reasonable protection against harmful interference in a residential installation. This equipment generates uses and can radiate radio frequency energy and, if not installed and used in accordance with the instructions, may cause harmful interference to radio communication. However, there is no guarantee that interference will not occur in a particular installation. If this equipment does cause harmful interference to radio or television reception, which can be determined by turning the equipment off and on, the user is encouraged to try to correct the interference by one or more of the following measures:
- Reorient or relocate the receiving antenna.
- Increase the separation between the equipment and receiver.
- Connect the equipment into an outlet on a circuit different from that to which the receiver is connected.
- Consult the dealer or an experienced radio/TV technician for help.

Security and performance

- 16.Do not use chemical agents or frosted cleaning agents to wipe the phone or charger; otherwise it may cause component damages or fire. Please use moist and anti-static soft cloth to wipe the phone.
- 17.Please correctly handle the waste of battery. Do not throw it into dustbin.
- 18.Do not use the phone in dusty or humid environment or in extremely low or high temperatures (allowable charging temperature: 0°C-40°C). Power line should not be close to heating vessels.
- 19.Do not take photographs, radios or records in case of violating laws, regulations or rights of other copyright proprietors.
- 20.We would not be responsible for any damages caused by photographs, records, or radios not to be recorded, deleted or damaged by some accessories or softwares.
- 21.We would not be responsible for abnormal operations caused by documents with virus or damaged pictures or rings.

Warning: the factory would not be responsible for non-compliance of users.
Note: added services should be provided by manufacturers. Please refer to instructions of service providers for details.
Declaration: the company would reserve rights to modify the products without prior notice and final explanation for the performance specification. The company would be devoted to improve the products and develop new products. All functions, specifications and designs in this Instruction would be slightly different. All alternations would not be notified in advance, please forgive.

Certificate of Quality

Name: GSM/GPRS Digital Mobile Phone

Model: _____

Inspection: _____ Qualified _____

Date: _____

Security and performance

- 1.It is forbidden to use sharps to touch or blow on the screen. Do not soak the mobile phone in deep water in case water-proof function damages.
- 2.Do not put battery at high temperatures (high temperature would result in battery heat arising); otherwise it would cause fire or explosion.
- 3.Keep mobile phone and charger far away from humans or other inflammables and explosives to prevent fire, explosion or other dangers.
- 4.Please obey instructions and turn off the mobile phone in public places.
- 5.Do not put mobile phone, battery or charger in appliances with strong electromagnetic field, such as induction cooker or microwave oven; otherwise it may cause electrical malfunctions, fire or explosion.
- 6.Do not modify or dismantle the mobile phone or accessories arbitrarily. Improper modification or dismantling would cause fire or explosion. Only authorized organizations could repair the phone.
- 7.Do not use non-original battery, charger or accessories.
- 8.Do not make the battery two poles contact in case of battery short circuit.
- 9.If the power line is damaged (exposed or broken) or connection plug is loose, do not use it any more in case of electric shock, charger circuit or fire.
- 10.Mobile phone would affect normal work of electric equipment and medical instruments, such as cardiac pacemaker, hearing-aid or other medical electric equipment. It is recommended that mobile phone should be 15cm far away from cardiac pacemaker to avoid potential disturbance.
- 11.Do not use mobile phone during driving. In emergencies, please use hands-free speakerphone (purchase if required) otherwise please stop your car before answering the call.
- 12.Do not put mobile phone above supplemental restraint system or other touchable places; otherwise airbag expansion or fracture may cause serious injuries to occupants.
- 13.Please keep mobile phone, battery and charger out of reach of children. Do not allow children to use mobile phone, battery or charger without surveillance.
- 14.It should meet specifications of radio frequency leakage. Please keep 1 inch (2.5cm) at least from antenna when taking mobile phone or using data functions.
- 15.Before cleaning or maintenance, please turn off the mobile phone and disconnect charger and mobile phone to avoid electric shock or circuit of battery

Install SIM card

- 4.Install SIM card: open rear cover and put metal face of memory card into card slot. Close rear cover and fix memory card by anti-direction sliding the cover.

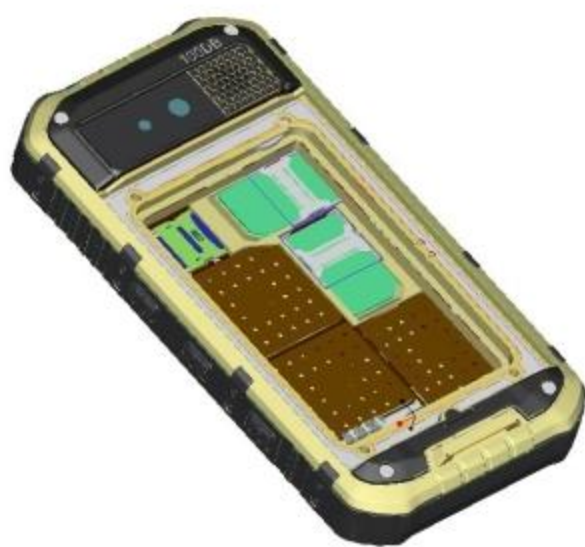


Figure 4



Figure 5

Note:

- 1.This mobile phone is water-proof. Dismantling of battery cover would affect water resistance. Users should press and install battery cover before turning the screw.
- 2.Please turn off the mobile phone and disconnect all power before installing or removing SMI card.

Install SIM card

- 1.Remove rear cover (Step 1): turn the screw anticlockwise until rear cover is loose;



Figure 1

- 2.Remove rear cover (Step 2): dig and remove rear cover upward;

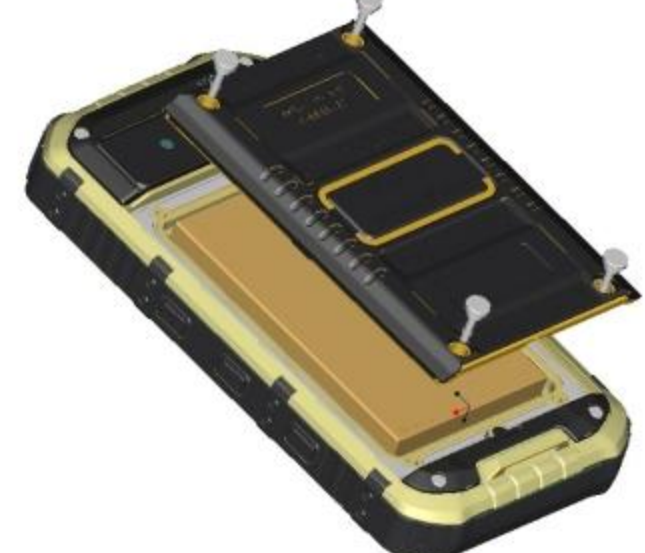


Figure 2

- 3.Install SIM card: push in SIM card into card slot and complete installation.

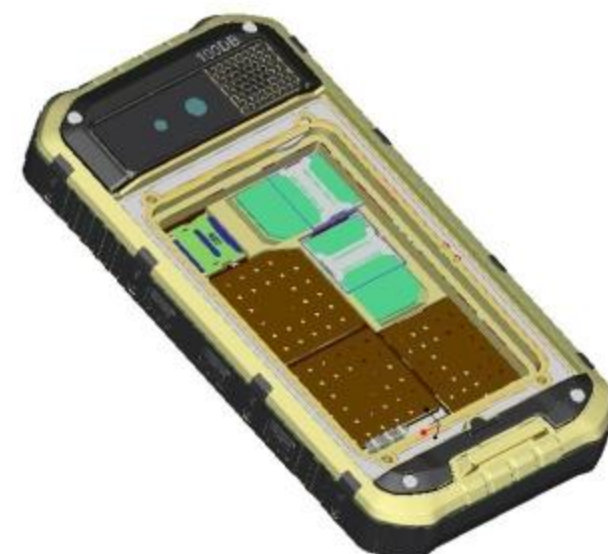


Figure 3

Start using your phone

- Turn on: press Power for three seconds.
Turn off: press Power for three seconds. Select power menu in dialog.



Menu: turn on available menu for current interface.
Main screen: back to main screen; long press Main Screen to load recently opened applications.
Back: back to last interface.
Volume: adjust volume; adjust volume of earphone, loudspeaker or Bluetooth earphone; adjust multi-media volume in video, audio or applications.
Camera: press it to turn on camera. Long press it to start One Key Call (please preset emergency number before calling).
Re-start: cold restart. Press it to force to disconnect power. User should press it to restart the phone. Please caution.
Distance sensor: when answering phone, screen light would turn off when the face is close to screen and lock screen to avoid misoperation. When the face is leaving the screen, it would start and unlock.

Note: avoid heavy objects damaging the screen or mobile phone.