

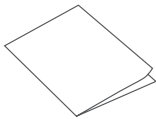
USB Connect 5G Modem Quick Start Guide

IK512VE/IK512US

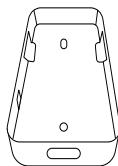
Package Contents



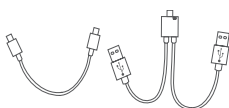
IK512 5G USB Modem



Documents



Rugged Mounting Case
(optional, for holding the modem)



Cable (optional)



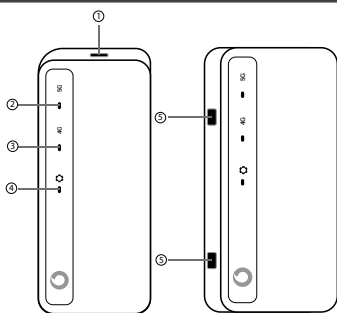
Screw x 2 (optional)



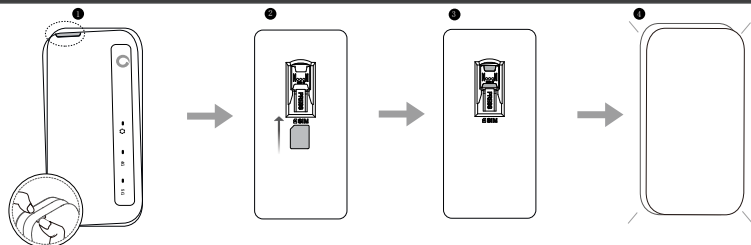
Wall Plug x2 (optional)

Getting to Know Your Modem

- ① USB-C port
- ② 5G LED indicator
- ③ 4G LED indicator
- ④ System LED indicator
- ⑤ TS9 external antenna interface



Step 1 Insert a Nano (4FF) SIM Card

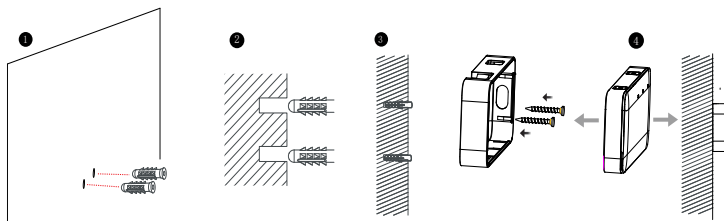


1. Remove the front cover.
2. Align the cutout tab using the diagram and gently slide the card into the slot with gold metal side down.
3. Make sure the nano SIM card clicks into place.
4. Put the front cover on.

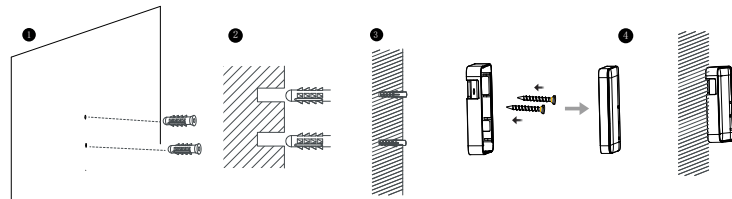
Step 2 Mount the Rugged Mounting Case onto the Wall

You can fix the rugged mounting case onto the wall using wall plugs and screws or heavy-duty double-sided tape. Either vertical or horizontal mounting is allowed.

Option 1: Use the screws and wall plugs (horizontal mounting)



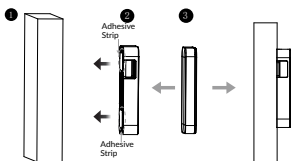
Use the screws and wall plugs (vertical mounting)



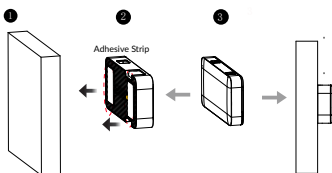
1. Place the mounting case against the wall to mark holes on the wall. Drill two pilot holes into the wall where you can insert the wall plugs.
2. Insert the wall plugs into the wall. Wall plugs are often required for a concrete wall, brick, plasterboard, or other solid surface.
3. Fix the mounting case onto the wall through wall plugs using the screws.
4. Put the modem into the mounting case until it sits properly into the mounting case. Please note the correct alignment of the modem in regards to the USB-C and antenna ports and the respective holes in the case.

Option 2: Use the double-sided tape

Vertical mounting



Horizontal mounting



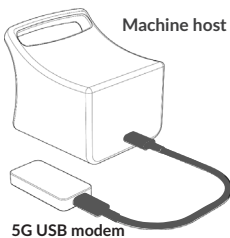
1. Clean the wall surface and peel one side of the adhesive strips off.
2. Attach the mounting case with adhesive strips onto the wall. Press it until it tightly adheres on the wall.
3. Put the modem back into the mounting case. Please note the the correct alignment of the modem in regards to the USB-C and antenna ports and the respective holes in the case. For maximum bonding reliability, leave the case for 24 hours before modem insertion.

Note:

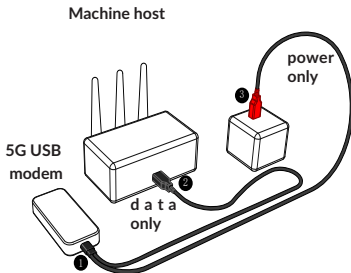
- It is recommended that you apply the adhesive strip under the temperature ranging from 21°C to 38°C.
- It is not recommended to apply the adhesive strip within 10°C. If you need to use it below 10°C, then an adhesive heating scheme is strongly recommended, while the heating temperature should not exceed 50°C.

Step 3 Use the Modem

Option 1: Use the USB-C cable



Option 2: Use USB-C to USB-A splitter cable



Follow the illustrations in **Option 1: Use the USB-C cable** to connect your modem to various hosts using a USB-C cable (optional) .

Option 2: To connect your modem to a host using a USB-C to USB-A splitter cable (optional):

1. Connect the USB-C end of the splitter cable to your 5G USB modem.
2. Plug the black USB-A connector (data only) into the host.
3. Plug the red USB-A connector (power only) into a suitable USB-A compatible power supply.

Note:

When your USB modem is in use, you may need to unplug/replug the red USB-A connector (power only), if the data cable was removed from a machine host A and plugged into a machine host B.

LED Indicator Guide

Indicator description	LED indicator status
Powering up	<ul style="list-style-type: none"> • System LED: Flashing white slowly • 4G LED: off • 5G LED: off
Error (eg. SIM card is not recognized, or PIN/PUK/SIM lock protected)	<ul style="list-style-type: none"> • System LED: Solid red • 4G LED: off • 5G LED: off
Network searching	<ul style="list-style-type: none"> • System LED: Solid blue • 4G LED: Flashing white slowly • 5G LED: Flashing white slowly
Registered on 4G	<ul style="list-style-type: none"> • System LED: Solid blue • 4G LED: <ul style="list-style-type: none"> ◦ Flashing blue slowly: Strong signal strength ◦ Flashing yellow slowly: Acceptable signal strength ◦ Flashing red slowly: Poor signal strength • 5G LED: off
Registered on 5G	<ul style="list-style-type: none"> • System LED: Solid blue • 4G LED: off • 5G LED: <ul style="list-style-type: none"> ◦ Flashing blue slowly: Strong signal strength ◦ Flashing yellow slowly: Acceptable signal strength ◦ Flashing red slowly: Poor signal strength
Connected to 4G	<ul style="list-style-type: none"> • System LED: Solid Blue • 4G LED: <ul style="list-style-type: none"> ◦ Solid blue: Strong signal strength ◦ Solid yellow: Acceptable signal strength ◦ Solid red: Poor signal strength • 5G LED: off
Connected to 5G	<ul style="list-style-type: none"> • System LED: Solid Blue • 4G LED: off • 5G LED: <ul style="list-style-type: none"> ◦ Solid blue: Strong signal ◦ Solid yellow: Acceptable signal ◦ Solid red: Poor signal
Firmware upgrading	<ul style="list-style-type: none"> • System LED: Flashing red quickly • 4G LED: off • 5G LED: off

Connection Setup

Refer to the USB Connect 5G "AT Command User Guide" and "Software Integration Guide" for detailed information on supported USB ports and data connection protocols, and instructions for setting up a data connection. You may contact Vodafone Business for these files mentioned above.