



SGS-CSTC Standards Technical Services (Suzhou) Co., Ltd

Report No.: SUCR250100002703

Rev.: 01

Page: 1 of 1

Appendix B

Detailed Test Results

| |
|------------------------------|
| 1. GSM |
| GSM850 for E-Field Emission |
| GSM1900 for E-Field Emission |

This document is issued by the Company subject to its General Conditions of Service printed overleaf, available on request or accessible at <http://www.sgs.com/en/Terms-and-Conditions.aspx> and, for electronic format documents, subject to Terms and Conditions for Electronic Documents at <http://www.sgs.com/en/Terms-and-Conditions/Terms-e-Document.aspx>. Attention is drawn to the limitation of liability, indemnification and jurisdiction issues defined therein. Any holder of this document is advised that information contained hereon reflects the Company's findings at the time of its intervention only and within the limits of Client's instructions, if any. The Company's sole responsibility is to its Client and this document does not exonerate parties to a transaction from exercising all their rights and obligations under the transaction documents. This document cannot be reproduced except in full, without prior written approval of the Company. Any unauthorized alteration, forgery or falsification of the content or appearance of this document is unlawful and offenders may be prosecuted to the fullest extent of the law.

Unless otherwise stated the results shown in this test report refer only to the sample(s) tested and such sample(s) are retained for 30 days only.

Attention: To check the authenticity of testing / inspection report & certificate, please contact us at telephone:(86-755) 8307 1443, or email: CN.Doccheck@sgs.com

RF Interference Potential Test Report

Measurement performed on February 09, 2025 at 15:50

Device Under Test

| | | | |
|--------------|-------|--------------------|-----------------------|
| Manufacturer | Model | Dimensions[mm] | Speaker Position [mm] |
| | | 146.2 x 71.8 x 7.5 | 144.3 |

Hardware Setup

| | | | |
|-----------------|------------------------|-------------|----------------------|
| Probe Name | Probe Calibration Date | DAE Name | DAE Calibration Date |
| EF3DV3 - SN4051 | August 14, 2024 | DAE4 Sn1374 | October 30,2024 |

Communication Systems

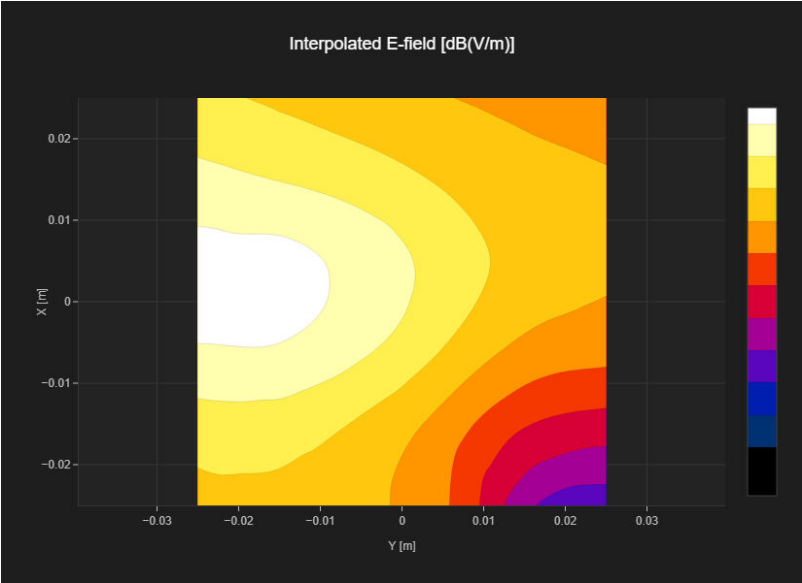
| | | | |
|-----------|----------------------------|---------|-----------------|
| Band Name | Communication Systems Name | Channel | Frequency [MHz] |
| GSM 850 | GSM-FDD (TDMA, GMSK) | 128 | 824.2 |

Grid Settings

| | | | | |
|---------------|---------------|-------------|-------------|---------------|
| Extent X [mm] | Extent Y [mm] | Step X [mm] | Step Y [mm] | Distance [mm] |
| 50.0 | 50.0 | 10.0 | 10.0 | 15.0 |

Results

| | | | |
|----------------|-------------------------|----------|-----------------|
| Emax [dB(V/m)] | Eavg50x50 max [dB(V/m)] | MIF [dB] | RFail [dB(V/m)] |
| 36.9 | 32.87 | 3.63 | 36.5 |



RF Interference Potential Test Report

Measurement performed on February 09, 2025 at 15:25

Device Under Test

| Manufacturer | Model | Dimensions[mm] | Speaker Position [mm] |
|--------------|-------|--------------------|-----------------------|
| | | 146.2 x 71.8 x 7.5 | 144.3 |

Hardware Setup

| Probe Name | Probe Calibration Date | DAE Name | DAE Calibration Date |
|-----------------|------------------------|-------------|----------------------|
| EF3DV3 - SN4051 | August 14, 2024 | DAE4 Sn1374 | October 30,2024 |

Communication Systems

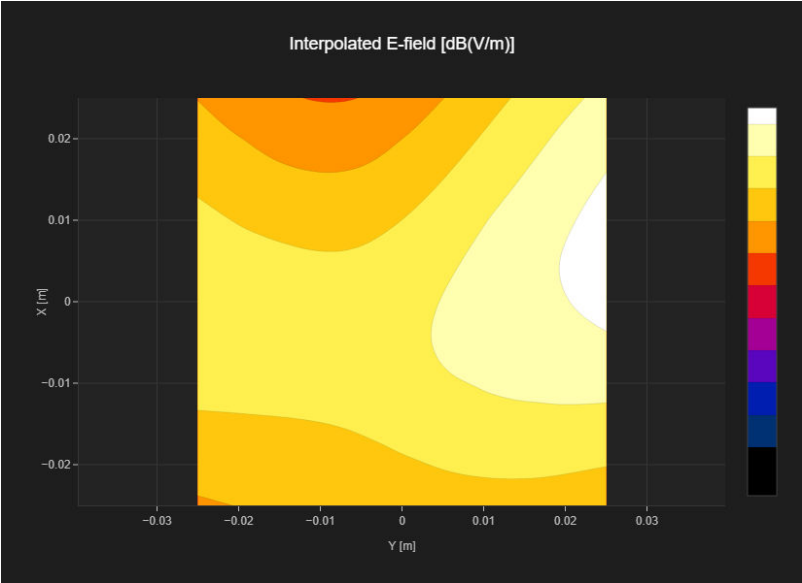
| Band Name | Communication Systems Name | Channel | Frequency [MHz] |
|-----------|----------------------------|---------|-----------------|
| PCS 1900 | GSM-FDD (TDMA, GMSK) | 512 | 1850.2 |

Grid Settings

| Extent X [mm] | Extent Y [mm] | Step X [mm] | Step Y [mm] | Distance [mm] |
|---------------|---------------|-------------|-------------|---------------|
| 50.0 | 50.0 | 10.0 | 10.0 | 15.0 |

Results

| E _{max} [dB(V/m)] | E _{avg50x50 max} [dB(V/m)] | MIF [dB] | RFail [dB(V/m)] |
|----------------------------|-------------------------------------|----------|-----------------|
| 32.89 | 29.35 | 3.63 | 32.98 |



RF Interference Potential Test Report

Measurement performed on February 09, 2025 at 15:35

Device Under Test

| Manufacturer | Model | Dimensions[mm] | Speaker Position [mm] |
|--------------|-------|--------------------|-----------------------|
| | | 146.2 x 71.8 x 7.5 | 144.3 |

Hardware Setup

| Probe Name | Probe Calibration Date | DAE Name | DAE Calibration Date |
|-----------------|------------------------|-------------|----------------------|
| EF3DV3 - SN4051 | August 14, 2024 | DAE4 Sn1374 | October 30,2024 |

Communication Systems

| Band Name | Communication Systems Name | Channel | Frequency [MHz] |
|-----------|-----------------------------|---------|-----------------|
| PCS 1900 | EDGE-FDD (TDMA, 8PSK, TN 0) | 512 | 1850.2 |

Grid Settings

| Extent X [mm] | Extent Y [mm] | Step X [mm] | Step Y [mm] | Distance [mm] |
|---------------|---------------|-------------|-------------|---------------|
| 50.0 | 50.0 | 10.0 | 10.0 | 15.0 |

Results

| Emax [dB(V/m)] | Eavg50x50 max [dB(V/m)] | MIF [dB] | RFail [dB(V/m)] |
|----------------|-------------------------|----------|-----------------|
| 9.5 | 7.46 | 3.75 | 11.21 |

