

Plot 33 n48 50%RB Left Cheek Low

Date: 2025/3/17

Communication System: UID 0, 5G NR (0); Frequency: 3600 MHz;Duty Cycle: 1:1

Medium parameters used: $f = 3600$ MHz; $\sigma = 2.806$ S/m; $\epsilon_r = 39.618$; $\rho = 1000$ kg/m³

Ambient Temperature:22.3 °C Liquid Temperature: 21.5°C

Phantom section: Left Section

DASY5 Configuration:

Sensor-Surface: 1.4mm (Mechanical Surface Detection)

Probe: EX3DV4 - SN7689; ConvF(6.71, 7.05, 7.17); Calibrated: 2024/6/4

Electronics: DAE4 Sn1317; Calibrated: 2024/9/10

Phantom: SAM 2; Type: QD000P40CD; Serial: TP:1666

Measurement SW: DASY52, Version 52.10 (4); SEMCAD X Version 14.6.14 (7483)

n48 50%RB Left/Cheek Low/Area Scan (12x21x1): Measurement grid: dx=10mm, dy=10mm

Maximum value of SAR (measured) = 0.815 W/kg

n48 50%RB Left/Cheek Low/Zoom Scan (7x7x12)/Cube 0: Measurement grid: dx=4mm, dy=4mm,

dz=2mm

Reference Value = 5.613 V/m; Power Drift = 0.11 dB

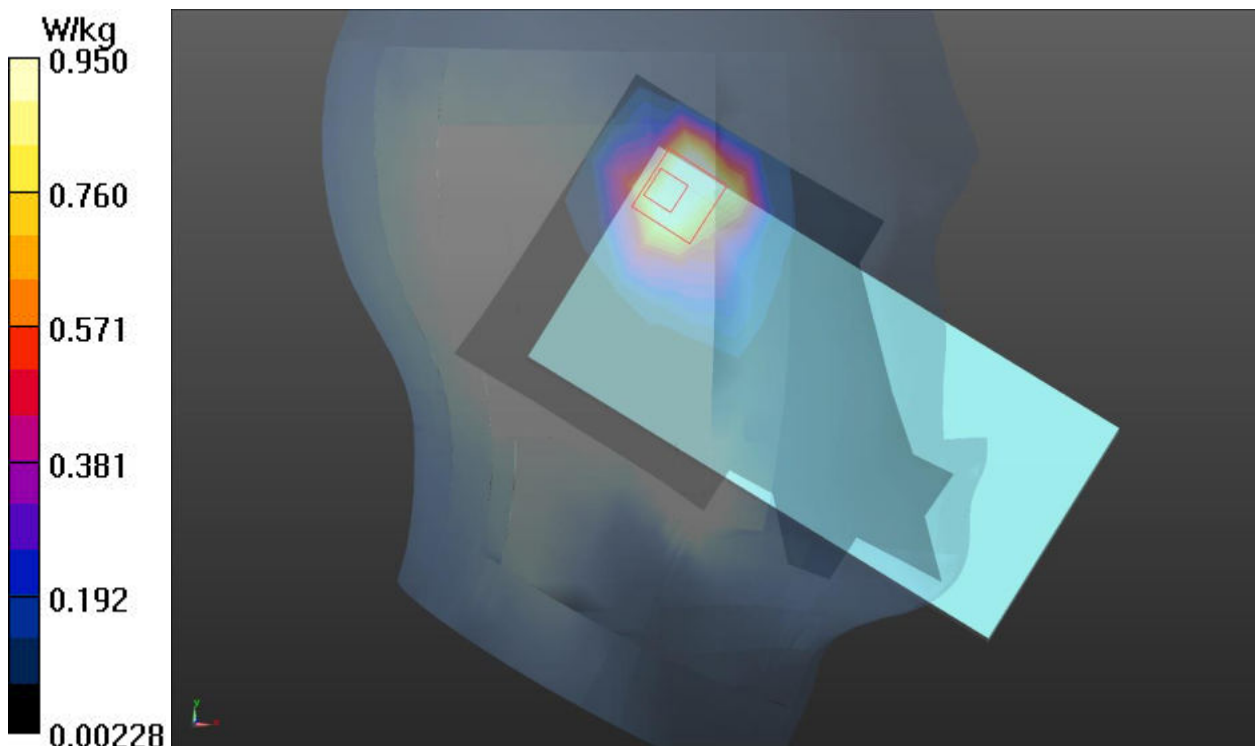
Peak SAR (extrapolated) = 1.98 W/kg

SAR(1 g) = 0.796 W/kg; SAR(10 g) = 0.365 W/kg

Smallest distance from peaks to all points 3 dB below = 12.1 mm

Ratio of SAR at M2 to SAR at M1 = 37.3%

Maximum value of SAR (measured) = 0.950 W/kg



Plot 34 n66 50%RB Left Cheek High

Date: 2025/3/25

Communication System: UID 0, 5G NR (0); Frequency: 1760 MHz;Duty Cycle: 1:1

Medium parameters used: $f = 1760$ MHz; $\sigma = 1.29$ S/m; $\epsilon_r = 38.897$; $\rho = 1000$ kg/m³

Ambient Temperature:22.3 °C Liquid Temperature: 21.5°C

Phantom section: Left Section

DASY5 Configuration:

Sensor-Surface: 1.4mm (Mechanical Surface Detection)

Probe: EX3DV4 - SN7689; ConvF(8.01, 8.42, 8.56); Calibrated: 2024/6/4

Electronics: DAE4 Sn1317; Calibrated: 2024/9/10

Phantom: SAM 2; Type: QD000P40CD; Serial: TP:1666

Measurement SW: DASY52, Version 52.10 (4); SEMCAD X Version 14.6.14 (7483)

n66 50%RB Left/Cheek High/Area Scan (7x12x1): Measurement grid: dx=15mm, dy=15mm

Maximum value of SAR (measured) = 0.695 W/kg

n66 50%RB Left/Cheek High/Zoom Scan (5x5x7)/Cube 0: Measurement grid: dx=8mm, dy=8mm, dz=5mm

Reference Value = 13.44 V/m; Power Drift = 0.03 dB

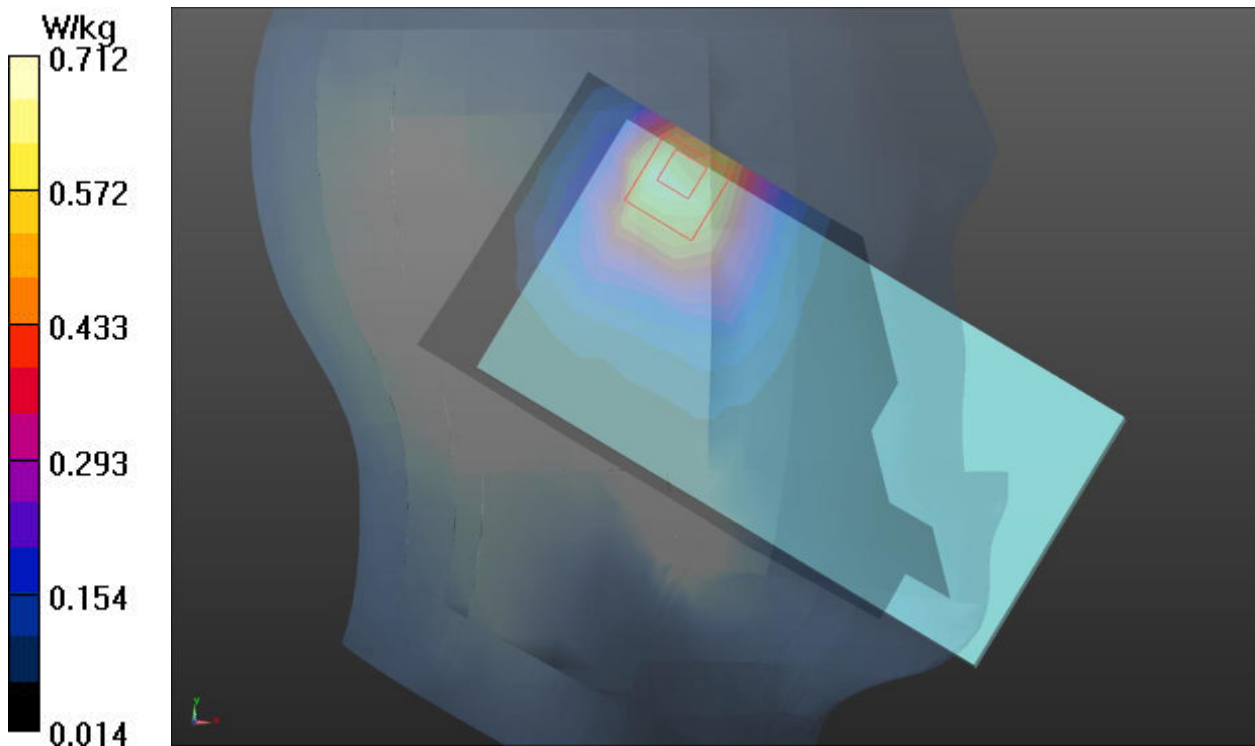
Peak SAR (extrapolated) = 1.25 W/kg

SAR(1 g) = 0.684 W/kg; SAR(10 g) = 0.397 W/kg

Smallest distance from peaks to all points 3 dB below = 13.8 mm

Ratio of SAR at M2 to SAR at M1 = 55%

Maximum value of SAR (measured) = 0.712 W/kg



Plot 35 n77 50%RB Left Cheek High

Date: 2025/3/27

Communication System: UID 0, 5G NR (0); Frequency: 3930 MHz;Duty Cycle: 1:1

Medium parameters used (interpolated): $f = 3930$ MHz; $\sigma = 3.177$ S/m; $\epsilon_r = 38.786$; $\rho = 1000$ kg/m³

Ambient Temperature:22.3 °C Liquid Temperature: 21.5°C

Phantom section: Left Section

DASY5 Configuration:

Sensor-Surface: 1.4mm (Mechanical Surface Detection)

Probe: EX3DV4 - SN7689; ConvF(6.51, 6.84, 6.95); Calibrated: 2024/6/4

Electronics: DAE4 Sn1317; Calibrated: 2024/9/10

Phantom: SAM 2; Type: QD000P40CD; Serial: TP:1666

Measurement SW: DASY52, Version 52.10 (4); SEMCAD X Version 14.6.14 (7483)

5G NR n77 50%RB Left/Cheek High/Area Scan (12x21x1): Measurement grid: dx=10mm, dy=10mm

Maximum value of SAR (measured) = 0.818 W/kg

5G NR n77 50%RB Left/Cheek High/Zoom Scan (7x7x12)/Cube 0: Measurement grid: dx=4mm, dy=4mm, dz=2mm

Reference Value = 7.729 V/m; Power Drift = -0.038 dB

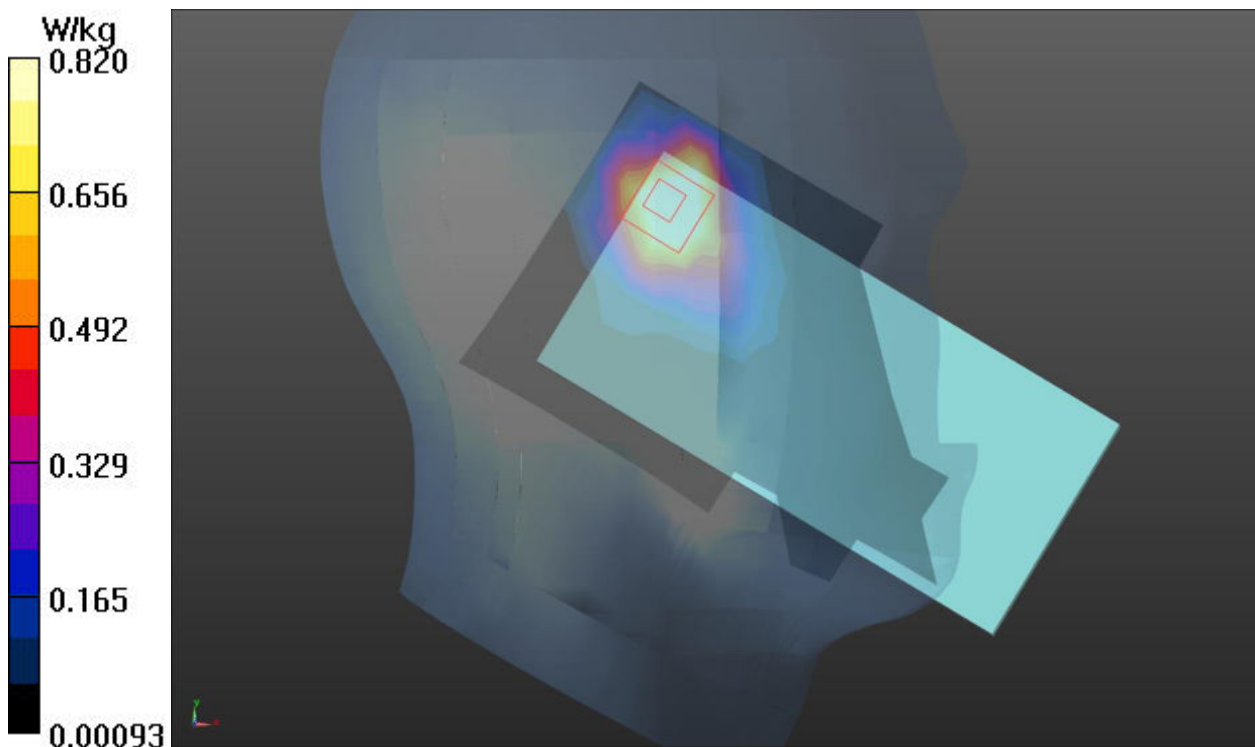
Peak SAR (extrapolated) = 2.06 W/kg

SAR(1 g) = 0.673 W/kg; SAR(10 g) = 0.305 W/kg

Smallest distance from peaks to all points 3 dB below = 11.8 mm

Ratio of SAR at M2 to SAR at M1 = 37.4%

Maximum value of SAR (measured) = 0.820 W/kg



Plot 36 802.11b Left Cheek Mid

Date: 2025/3/29

Communication System: UID 0, 802.11b (0); Frequency: 2437 MHz;Duty Cycle: 1:1

Medium parameters used (interpolated): $f = 2437$ MHz; $\sigma = 1.824$ S/m; $\epsilon_r = 38.516$; $\rho = 1000$ kg/m³

Ambient Temperature:22.3 °C Liquid Temperature: 21.5°C

Phantom section: Left Section

DASY5 Configuration:

Sensor-Surface: 1.4mm (Mechanical Surface Detection)

Probe: EX3DV4 - SN7689; ConvF(7.62, 8.01, 8.14); Calibrated: 2024/6/4

Electronics: DAE4 Sn1317; Calibrated: 2024/9/10

Phantom: SAM 2; Type: QD000P40CD; Serial: TP:1666

Measurement SW: DASY52, Version 52.10 (4); SEMCAD X Version 14.6.14 (7483)

802.11b Left/Cheek Mid/Area Scan (10x18x1): Measurement grid: dx=12mm, dy=12mm

Maximum value of SAR (measured) = 0.807 W/kg

802.11b Left/Cheek Mid/Zoom Scan (7x7x7)/Cube 0: Measurement grid: dx=5mm, dy=5mm, dz=5mm

Reference Value = 13.07 V/m; Power Drift = 0.09 dB

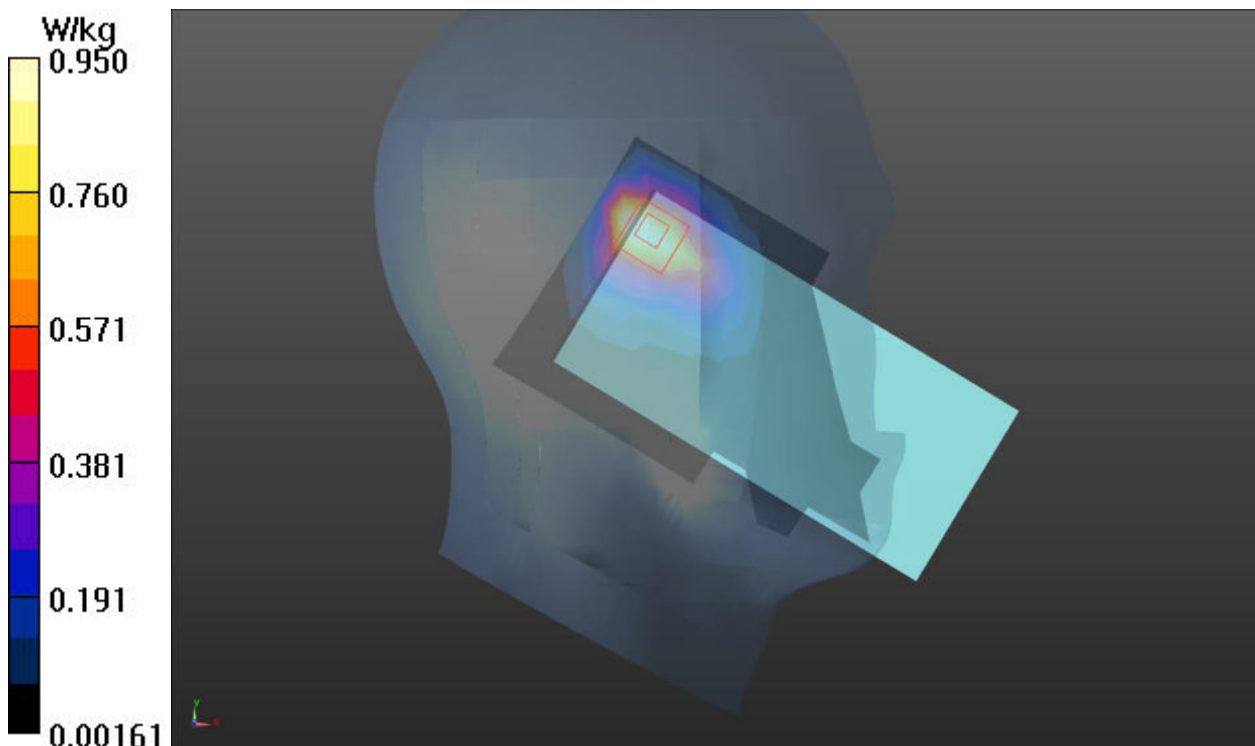
Peak SAR (extrapolated) = 1.41 W/kg

SAR(1 g) = 0.734 W/kg; SAR(10 g) = 0.371 W/kg

Smallest distance from peaks to all points 3 dB below = 9.8 mm

Ratio of SAR at M2 to SAR at M1 = 51.1%

Maximum value of SAR (measured) = 0.950 W/kg



Plot 37 802.11a Left Tilt Mid

Date: 2025/4/1

Communication System: UID 0, 802.11a (0); Frequency: 5580 MHz;Duty Cycle: 1:1

Medium parameters used: $f = 5580$ MHz; $\sigma = 5.144$ S/m; $\epsilon_r = 34.604$; $\rho = 1000$ kg/m³

Ambient Temperature:22.3 °C Liquid Temperature: 21.5°C

Phantom section: Left Section

DASY5 Configuration:

Sensor-Surface: 1.4mm (Mechanical Surface Detection)

Probe: EX3DV4 - SN7689; ConvF(5.33, 5.60, 5.70); Calibrated: 2024/6/4

Electronics: DAE4 Sn1317; Calibrated: 2024/9/10

Phantom: SAM 2; Type: QD000P40CD; Serial: TP:1666

Measurement SW: DASY52, Version 52.10 (4); SEMCAD X Version 14.6.14 (7483)

802.11a Left/Tilt Mid/Area Scan (12x21x1): Measurement grid: dx=10mm, dy=10mm

Maximum value of SAR (measured) = 0.764 W/kg

802.11a Left/Tilt Mid/Zoom Scan (7x7x12)/Cube 0: Measurement grid: dx=4mm, dy=4mm,

dz=2mm

Reference Value = 9.828 V/m; Power Drift = 0.17 dB

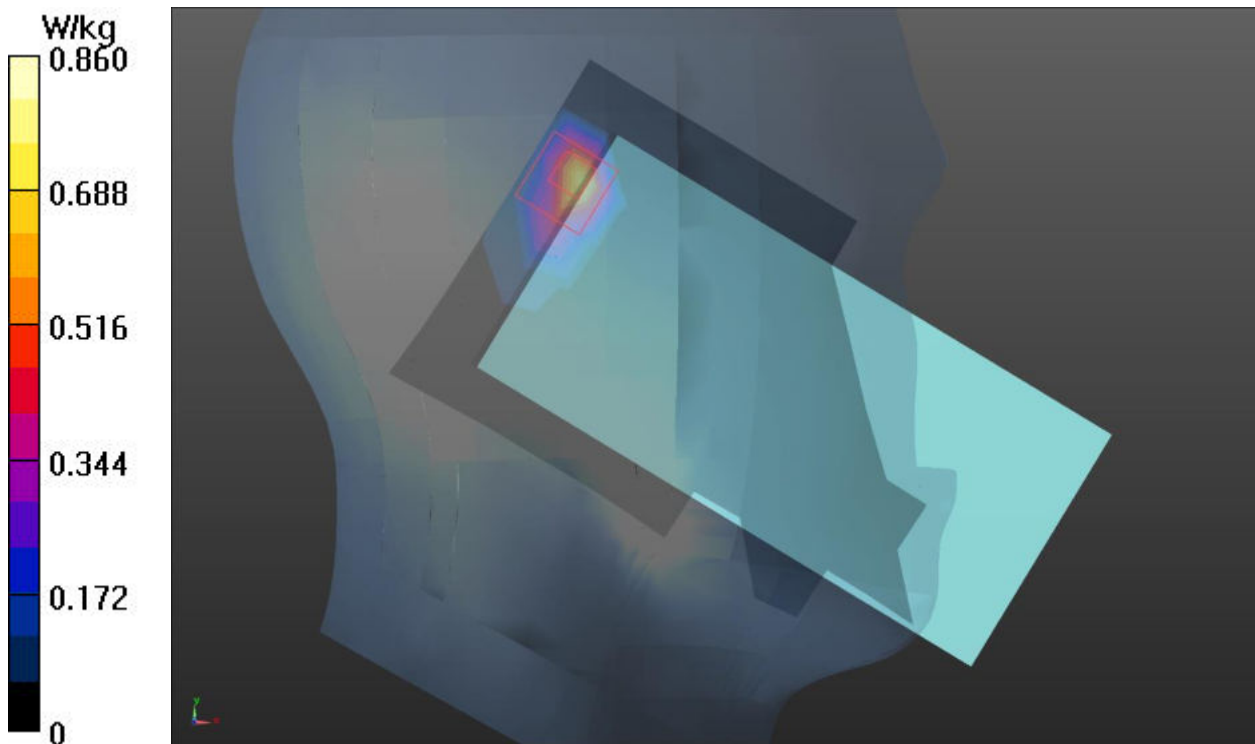
Peak SAR (extrapolated) = 2.00 W/kg

SAR(1 g) = 0.649 W/kg; SAR(10 g) = 0.180 W/kg

Smallest distance from peaks to all points 3 dB below = 15.8 mm

Ratio of SAR at M2 to SAR at M1 = 47.7%

Maximum value of SAR (measured) = 0.860 W/kg



Plot 38 BT DH5 Left Cheek Mid

Date: 2025/3/29

Communication System: UID 0, BT (0); Frequency: 2441 MHz; Duty Cycle: 1:1.30

Medium parameters used (interpolated): $f = 2441$ MHz; $\sigma = 1.828$ S/m; $\epsilon_r = 38.503$; $\rho = 1000$ kg/m³

Ambient Temperature: 22.3 °C Liquid Temperature: 21.5 °C

Phantom section: Left Section

DASY5 Configuration:

Sensor-Surface: 1.4mm (Mechanical Surface Detection)

Probe: EX3DV4 - SN7689; ConvF(7.62, 8.01, 8.14); Calibrated: 2024/6/4

Electronics: DAE4 Sn1317; Calibrated: 2024/9/10

Phantom: SAM 2; Type: QD000P40CD; Serial: TP:1666

Measurement SW: DASY52, Version 52.10 (4); SEMCAD X Version 14.6.14 (7483)

BT DH5 Left/Cheek Mid/Area Scan (10x18x1): Measurement grid: dx=12mm, dy=12mm

Maximum value of SAR (measured) = 0.120 W/kg

BT DH5 Left/Cheek Mid/Zoom Scan (7x7x7)/Cube 0: Measurement grid: dx=5mm, dy=5mm, dz=5mm

Reference Value = 3.716 V/m; Power Drift = -0.063 dB

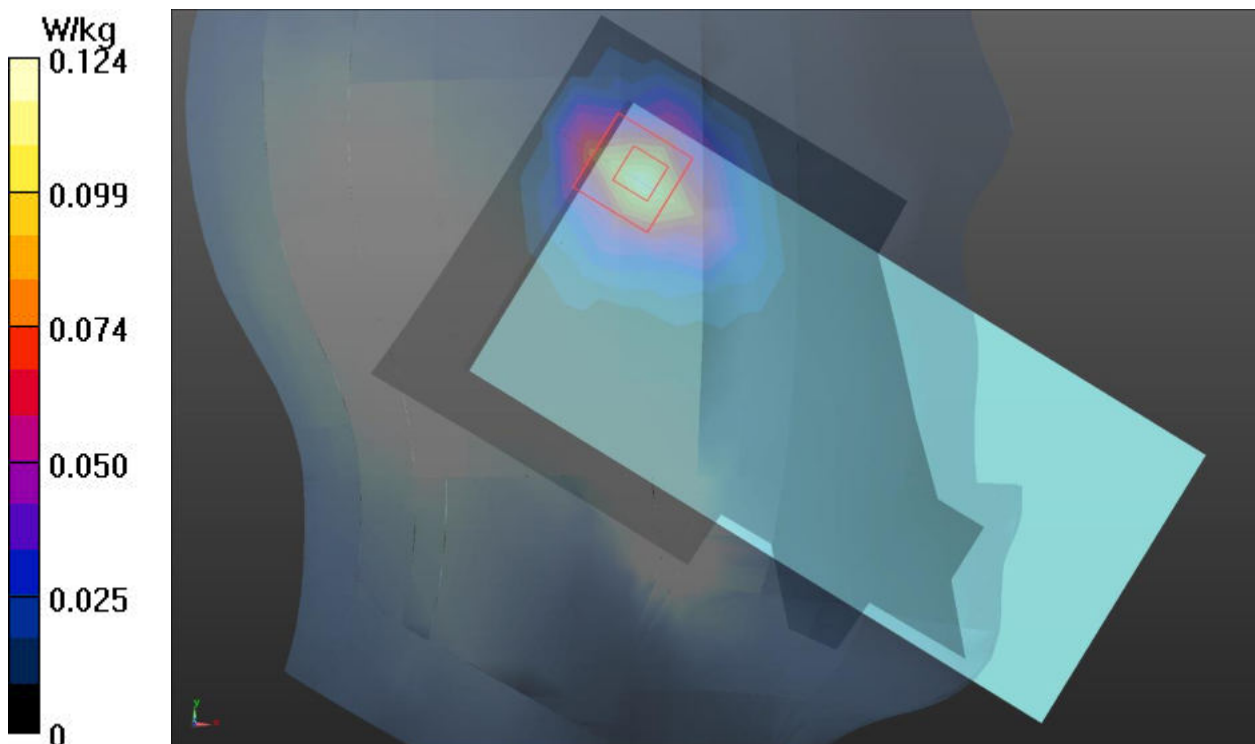
Peak SAR (extrapolated) = 0.172 W/kg

SAR(1 g) = 0.084 W/kg; SAR(10 g) = 0.038 W/kg

Smallest distance from peaks to all points 3 dB below = 9.3 mm

Ratio of SAR at M2 to SAR at M1 = 42.3%

Maximum value of SAR (measured) = 0.124 W/kg



Plot 39 GSM 850 Back Side 15mm Mid

Date: 2025/3/15

Communication System: UID 0, GSM (0); Frequency: 836.6 MHz; Duty Cycle: 1:8.30

Medium parameters used (interpolated): $f = 836.6$ MHz; $\sigma = 0.948$ S/m; $\epsilon_r = 42.274$; $\rho = 1000$ kg/m³

Ambient Temperature: 22.3 °C Liquid Temperature: 21.5 °C

Phantom section: Flat Section

DASY5 Configuration:

Sensor-Surface: 1.4mm (Mechanical Surface Detection)

Probe: EX3DV4 - SN7689; ConvF(9.44, 9.92, 10.09); Calibrated: 2024/6/4

Electronics: DAE4 Sn1317; Calibrated: 2024/9/10

Phantom: SAM 2; Type: QD000P40CD; Serial: TP:1666

Measurement SW: DASY52, Version 52.10 (4); SEMCAD X Version 14.6.14 (7483)

GSM 850 Back Side 15mm/Mid/Area Scan (9x13x1): Measurement grid: dx=15mm, dy=15mm

Maximum value of SAR (measured) = 0.209 W/kg

GSM 850 Back Side 15mm/Mid/Zoom Scan (5x5x7)/Cube 0: Measurement grid: dx=8mm,

dy=8mm, dz=5mm

Reference Value = 15.58 V/m; Power Drift = -0.034 dB

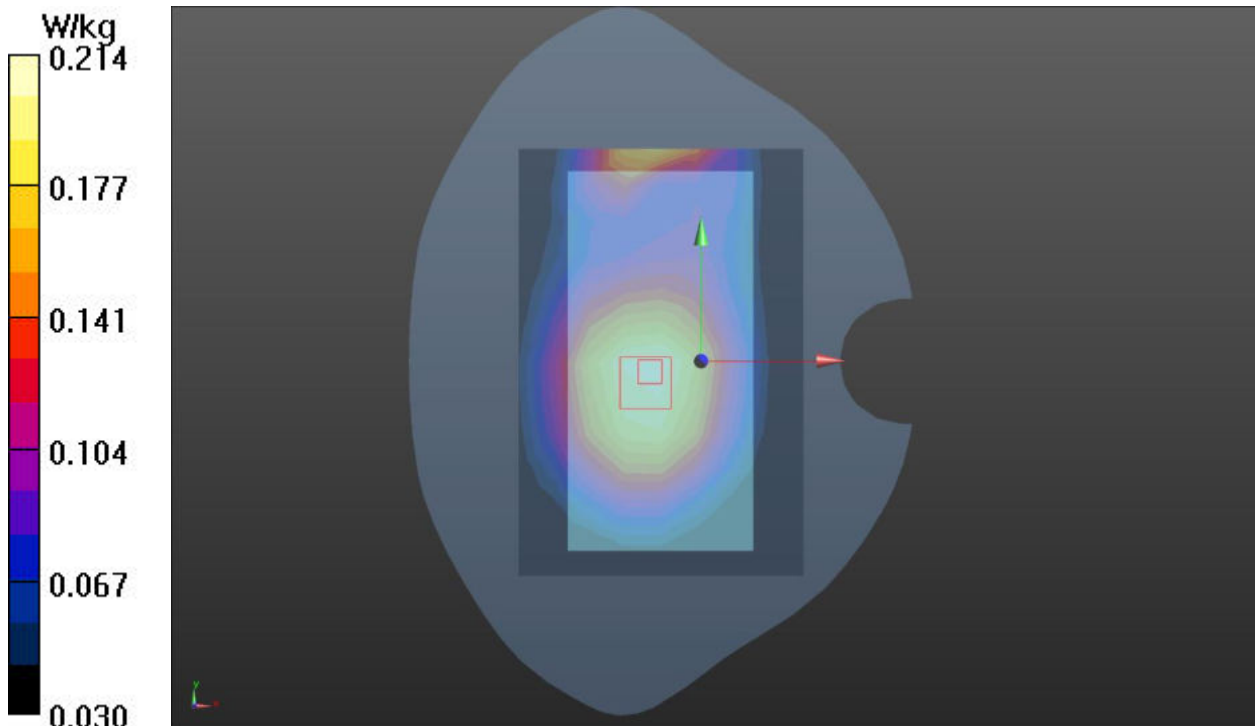
Peak SAR (extrapolated) = 0.262 W/kg

SAR(1 g) = 0.201 W/kg; SAR(10 g) = 0.151 W/kg

Smallest distance from peaks to all points 3 dB below = 10.2 mm

Ratio of SAR at M2 to SAR at M1 = 75.2%

Maximum value of SAR (measured) = 0.214 W/kg



Plot 40 GSM 1900 Back Side 15mm Mid

Date: 2025/3/18

Communication System: UID 0, GSM (0); Frequency: 1880 MHz; Duty Cycle: 1:8.30

Medium parameters used: $f = 1880$ MHz; $\sigma = 1.4$ S/m; $\epsilon_r = 38.43$; $\rho = 1000$ kg/m³

Ambient Temperature: 22.3 °C Liquid Temperature: 21.5 °C

Phantom section: Flat Section

DASY5 Configuration:

Sensor-Surface: 1.4mm (Mechanical Surface Detection)

Probe: EX3DV4 - SN7689; ConvF(7.88, 8.28, 8.42); Calibrated: 2024/6/4

Electronics: DAE4 Sn1317; Calibrated: 2024/9/10

Phantom: SAM 2; Type: QD000P40CD; Serial: TP:1666

Measurement SW: DASY52, Version 52.10 (4); SEMCAD X Version 14.6.14 (7483)

GSM 1900 Back Side 15mm/Mid/Area Scan (9x13x1): Measurement grid: dx=15mm, dy=15mm

Maximum value of SAR (measured) = 0.135 W/kg

GSM 1900 Back Side 15mm/Mid/Zoom Scan (5x5x7)/Cube 0: Measurement grid: dx=8mm,

dy=8mm, dz=5mm

Reference Value = 7.002 V/m; Power Drift = 0.035 dB

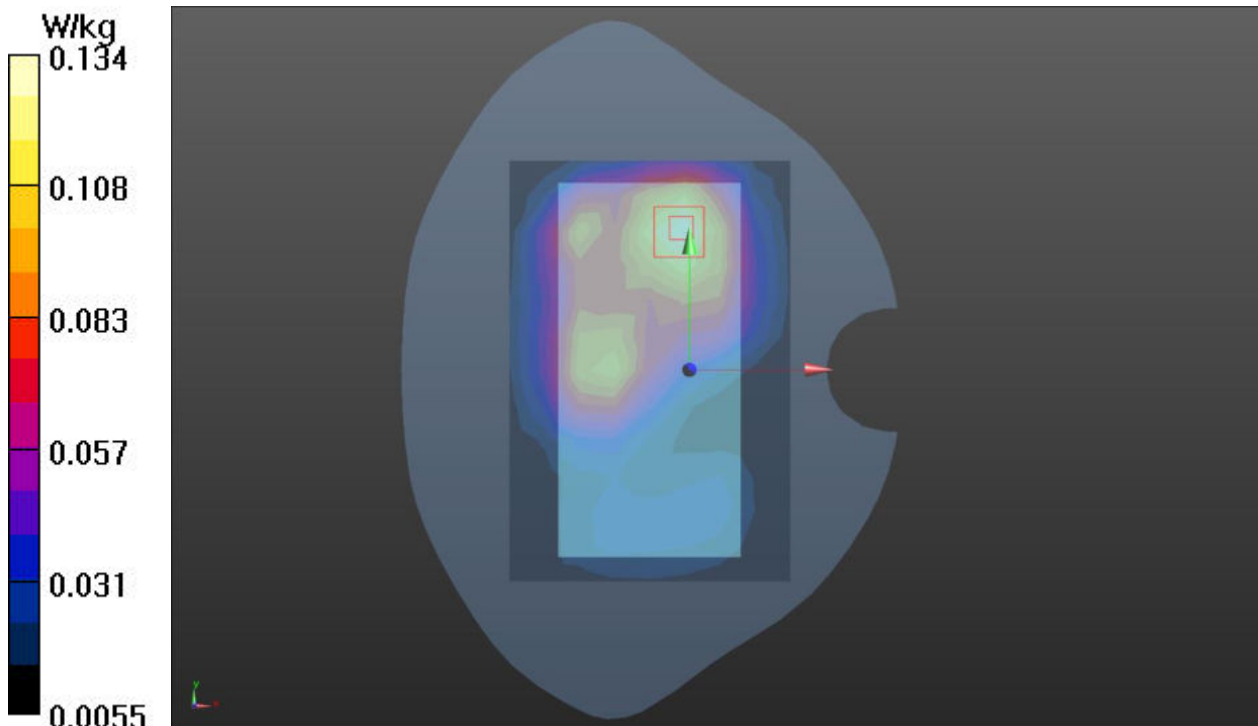
Peak SAR (extrapolated) = 0.195 W/kg

SAR(1 g) = 0.126 W/kg; SAR(10 g) = 0.080 W/kg

Smallest distance from peaks to all points 3 dB below = 16.6 mm

Ratio of SAR at M2 to SAR at M1 = 64.1%

Maximum value of SAR (measured) = 0.134 W/kg



Plot 41 WCDMA B2 Back Side 15mm Mid

Date: 2025/3/20

Communication System: UID 0, WCDMA (0); Frequency: 1880 MHz; Duty Cycle: 1:1

Medium parameters used: $f = 1880$ MHz; $\sigma = 1.4$ S/m; $\epsilon_r = 38.43$; $\rho = 1000$ kg/m³

Ambient Temperature: 22.3 °C Liquid Temperature: 21.5 °C

Phantom section: Flat Section

DASY5 Configuration:

Sensor-Surface: 1.4mm (Mechanical Surface Detection)

Probe: EX3DV4 - SN7689; ConvF(7.88, 8.28, 8.42); Calibrated: 2024/6/4

Electronics: DAE4 Sn1317; Calibrated: 2024/9/10

Phantom: SAM 2; Type: QD000P40CD; Serial: TP:1666

Measurement SW: DASY52, Version 52.10 (4); SEMCAD X Version 14.6.14 (7483)

WCDMA B2 Back Side 15mm/Mid/Area Scan (9x13x1): Measurement grid: dx=15mm, dy=15mm
 Maximum value of SAR (measured) = 0.346 W/kg

WCDMA B2 Back Side 15mm/Mid/Zoom Scan (5x5x7)/Cube 0: Measurement grid: dx=8mm, dy=8mm, dz=5mm

Reference Value = 11.35 V/m; Power Drift = 0.023 dB

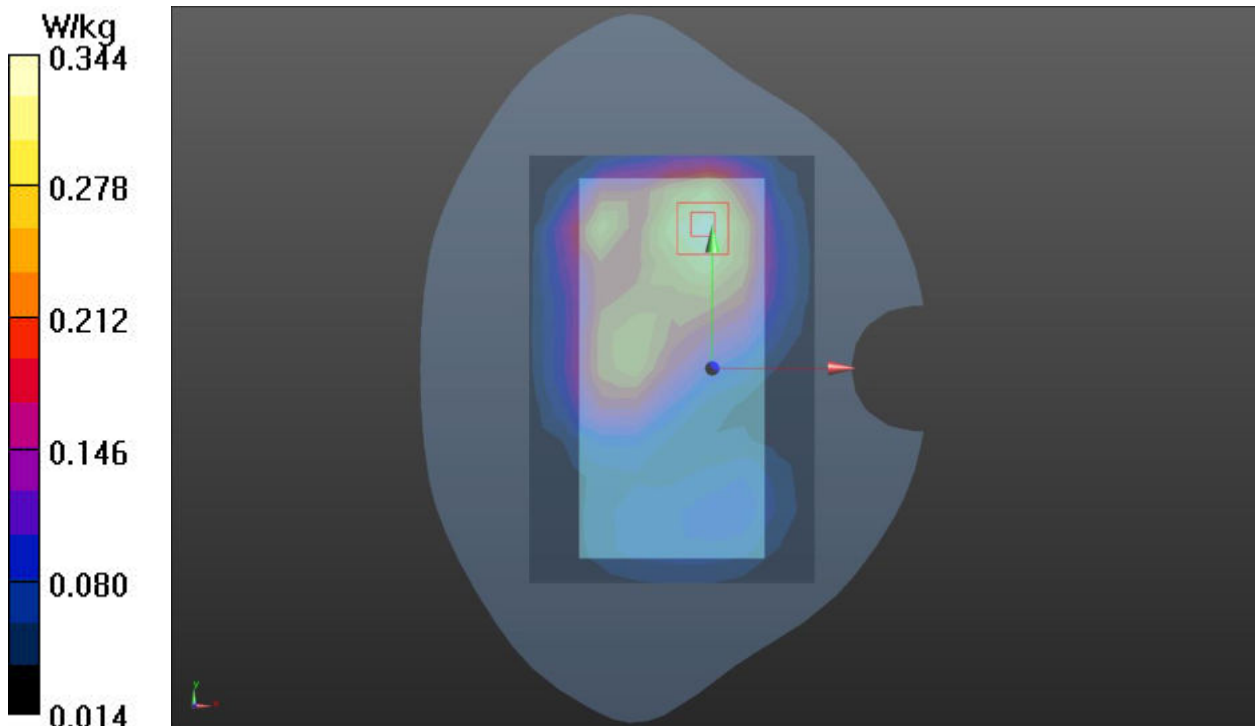
Peak SAR (extrapolated) = 0.502 W/kg

SAR(1 g) = 0.324 W/kg; SAR(10 g) = 0.206 W/kg

Smallest distance from peaks to all points 3 dB below = 12.3 mm

Ratio of SAR at M2 to SAR at M1 = 64.3%

Maximum value of SAR (measured) = 0.344 W/kg



Plot 42 LTE B2 50%RB Back Side 15mm Mid

Date: 2025/4/7

Communication System: UID 0, LTE (0); Frequency: 1880 MHz;Duty Cycle: 1:1

Medium parameters used: $f = 1880$ MHz; $\sigma = 1.4$ S/m; $\epsilon_r = 38.43$; $\rho = 1000$ kg/m³

Ambient Temperature:22.3 °C Liquid Temperature: 21.5°C

Phantom section: Flat Section

DASY5 Configuration:

Sensor-Surface: 1.4mm (Mechanical Surface Detection)

Probe: EX3DV4 - SN7689; ConvF(7.88, 8.28, 8.42); Calibrated: 2024/6/4

Electronics: DAE4 Sn1317; Calibrated: 2024/9/10

Phantom: SAM 2; Type: QD000P40CD; Serial: TP:1666

Measurement SW: DASY52, Version 52.10 (4); SEMCAD X Version 14.6.14 (7483)

LTE B2 50%RB Back Side 15mm/Mid/Area Scan (9x13x1): Measurement grid: dx=15mm, dy=15mm

Maximum value of SAR (measured) = 0.374 W/kg

LTE B2 50%RB Back Side 15mm/Mid/Zoom Scan (5x5x7)/Cube 0: Measurement grid: dx=8mm, dy=8mm, dz=5mm

Reference Value = 13.22 V/m; Power Drift = 0.026 dB

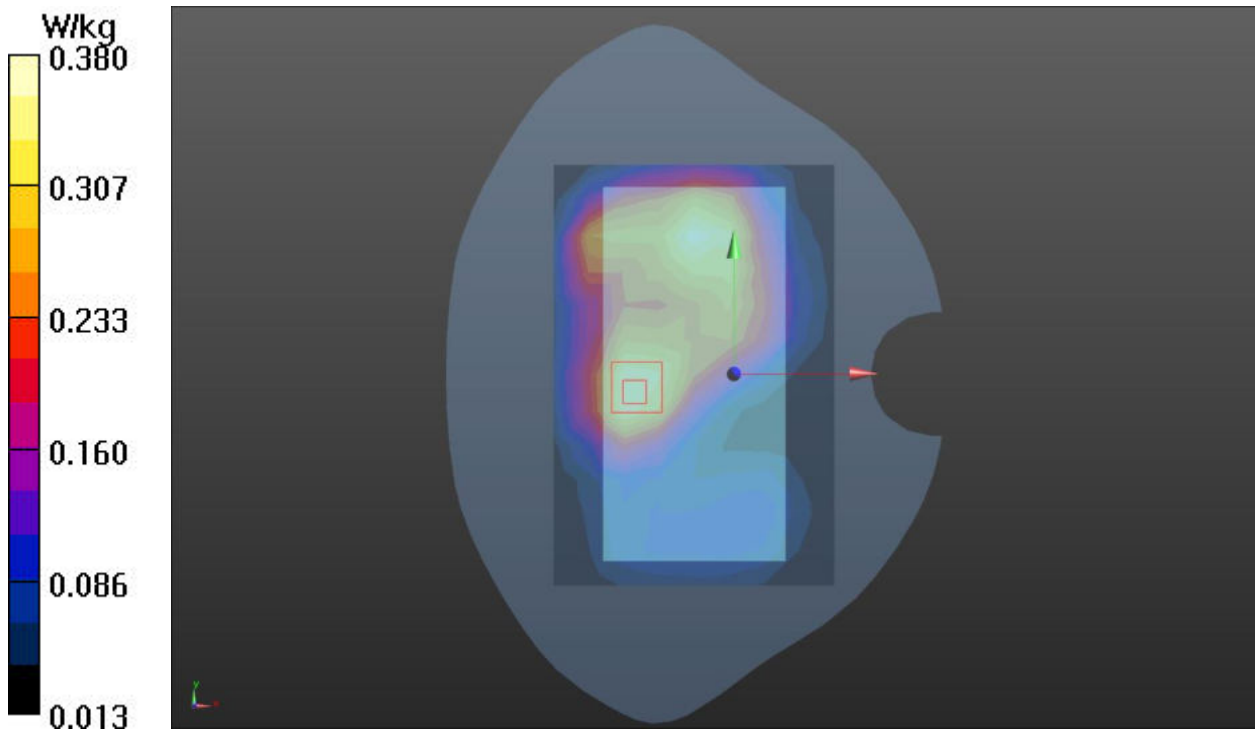
Peak SAR (extrapolated) = 0.556 W/kg

SAR(1 g) = 0.355 W/kg; SAR(10 g) = 0.224 W/kg

Smallest distance from peaks to all points 3 dB below = 21.5 mm

Ratio of SAR at M2 to SAR at M1 = 63.4%

Maximum value of SAR (measured) = 0.380 W/kg



Plot 43 LTE B7 50%RB Back Side 15mm Low

Date: 2025/3/14

Communication System: UID 0, LTE (0); Frequency: 2510 MHz; Duty Cycle: 1:1

Medium parameters used: $f = 2510$ MHz; $\sigma = 1.906$ S/m; $\epsilon_r = 38.249$; $\rho = 1000$ kg/m³

Ambient Temperature: 22.3 °C Liquid Temperature: 21.5 °C

Phantom section: Flat Section

DASY5 Configuration:

Sensor-Surface: 1.4mm (Mechanical Surface Detection)

Probe: EX3DV4 - SN7689; ConvF(7.39, 7.77, 7.89); Calibrated: 2024/6/4

Electronics: DAE4 Sn1317; Calibrated: 2024/9/10

Phantom: SAM 2; Type: QD000P40CD; Serial: TP:1666

Measurement SW: DASY52, Version 52.10 (4); SEMCAD X Version 14.6.14 (7483)

LTE B7 50%RB Back Side 15mm/Low/Area Scan (10x18x1): Measurement grid: dx=12mm, dy=12mm

Maximum value of SAR (measured) = 0.566 W/kg

LTE B7 50%RB Back Side 15mm/Low/Zoom Scan (7x7x7)/Cube 0: Measurement grid: dx=5mm, dy=5mm, dz=5mm

Reference Value = 7.651 V/m; Power Drift = -0.04 dB

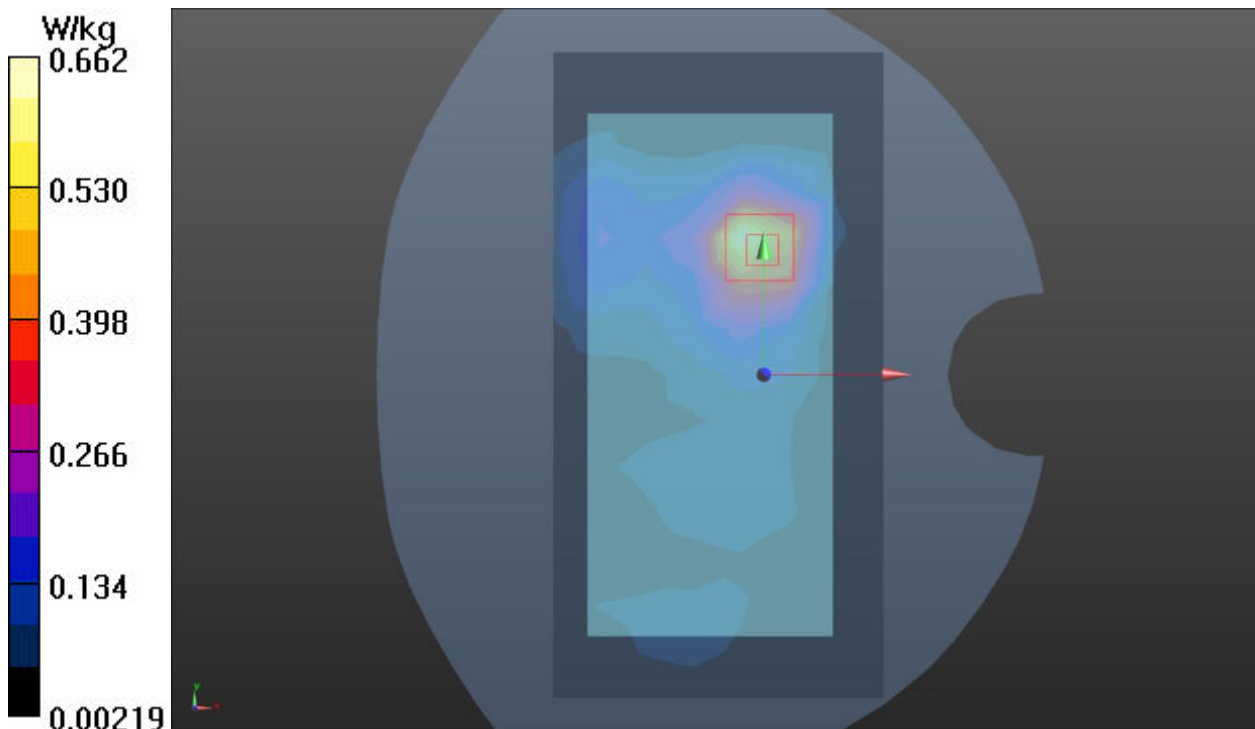
Peak SAR (extrapolated) = 1.20 W/kg

SAR(1 g) = 0.604 W/kg; SAR(10 g) = 0.309 W/kg

Smallest distance from peaks to all points 3 dB below = 14.3 mm

Ratio of SAR at M2 to SAR at M1 = 50.7%

Maximum value of SAR (measured) = 0.662 W/kg



Plot 44 LTE B48 1RB Back Side 15mm Low

Date: 2025/3/17

Communication System: UID 0, LTE (0); Frequency: 3660 MHz; Duty Cycle: 1:1.58

Medium parameters used: $f = 3660$ MHz; $\sigma = 2.869$ S/m; $\epsilon_r = 39.464$; $\rho = 1000$ kg/m³

Ambient Temperature: 22.3 °C Liquid Temperature: 21.5 °C

Phantom section: Flat Section

DASY5 Configuration:

Sensor-Surface: 1.4mm (Mechanical Surface Detection)

Probe: EX3DV4 - SN7689; ConvF(6.71, 7.05, 7.17); Calibrated: 2024/6/4

Electronics: DAE4 Sn1317; Calibrated: 2024/9/10

Phantom: SAM 2; Type: QD000P40CD; Serial: TP:1666

Measurement SW: DASY52, Version 52.10 (4); SEMCAD X Version 14.6.14 (7483)

LTE B48 1RB Back Side 15mm/Low/Area Scan (12x22x1): Measurement grid: dx=10mm, dy=10mm

Maximum value of SAR (measured) = 0.291 W/kg

LTE B48 1RB Back Side 15mm/Low/Zoom Scan (7x7x12)/Cube 0: Measurement grid: dx=4mm, dy=4mm, dz=2mm

Reference Value = 3.735 V/m; Power Drift = 0.077 dB

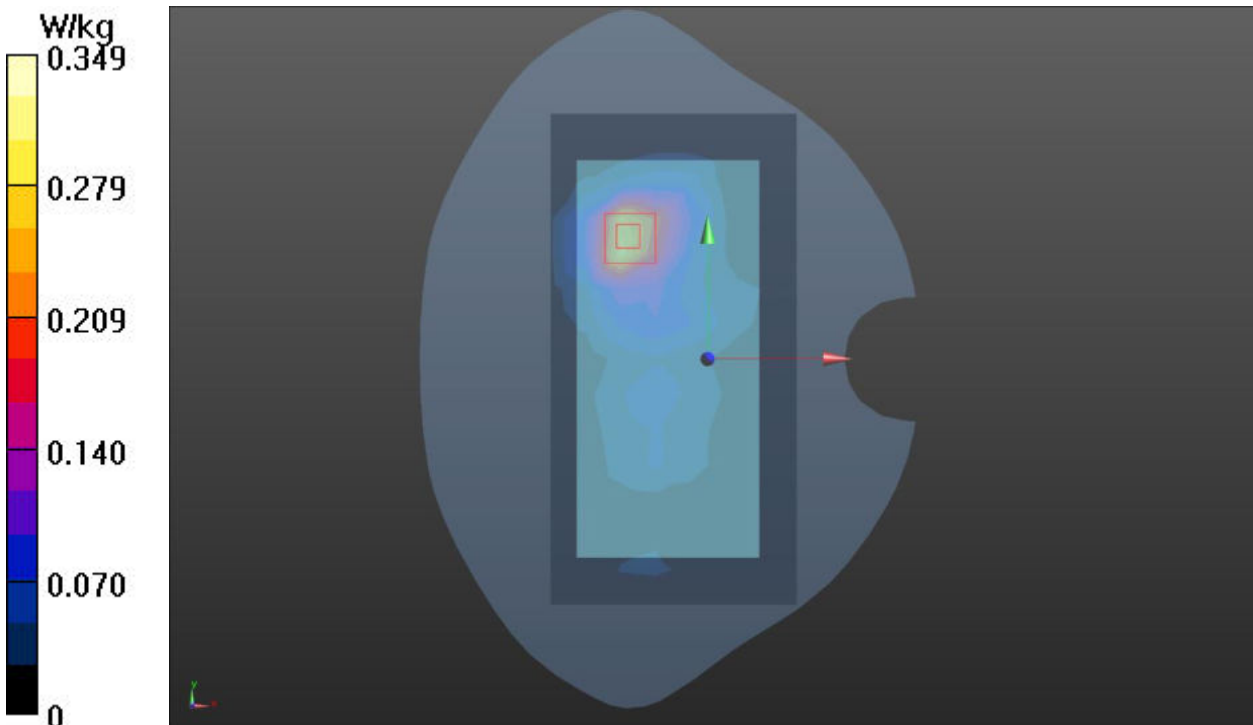
Peak SAR (extrapolated) = 0.724 W/kg

SAR(1 g) = 0.313 W/kg; SAR(10 g) = 0.141 W/kg

Smallest distance from peaks to all points 3 dB below = 13.2 mm

Ratio of SAR at M2 to SAR at M1 = 41.8%

Maximum value of SAR (measured) = 0.349 W/kg



Plot 45 LTE B66 50%RB Back Side 15mm Mid

Date: 2025/3/24

Communication System: UID 0, LTE (0); Frequency: 1745 MHz; Duty Cycle: 1:1

Medium parameters used (interpolated): $f = 1745 \text{ MHz}$; $\sigma = 1.277 \text{ S/m}$; $\epsilon_r = 38.919$; $\rho = 1000 \text{ kg/m}^3$

Ambient Temperature: 22.3 °C Liquid Temperature: 21.5 °C

Phantom section: Flat Section

DASY5 Configuration:

Sensor-Surface: 1.4mm (Mechanical Surface Detection)

Probe: EX3DV4 - SN7689; ConvF(8.01, 8.42, 8.56); Calibrated: 2024/6/4

Electronics: DAE4 Sn1317; Calibrated: 2024/9/10

Phantom: SAM 2; Type: QD000P40CD; Serial: TP:1666

Measurement SW: DASY52, Version 52.10 (4); SEMCAD X Version 14.6.14 (7483)

LTE B66 50%RB Back Side 15mm/Mid/Area Scan (9x13x1): Measurement grid: dx=15mm, dy=15mm

Maximum value of SAR (measured) = 0.258 W/kg

LTE B66 50%RB Back Side 15mm/Mid/Zoom Scan (5x5x7)/Cube 0: Measurement grid: dx=8mm, dy=8mm, dz=5mm

Reference Value = 11.62 V/m; Power Drift = 0.19 dB

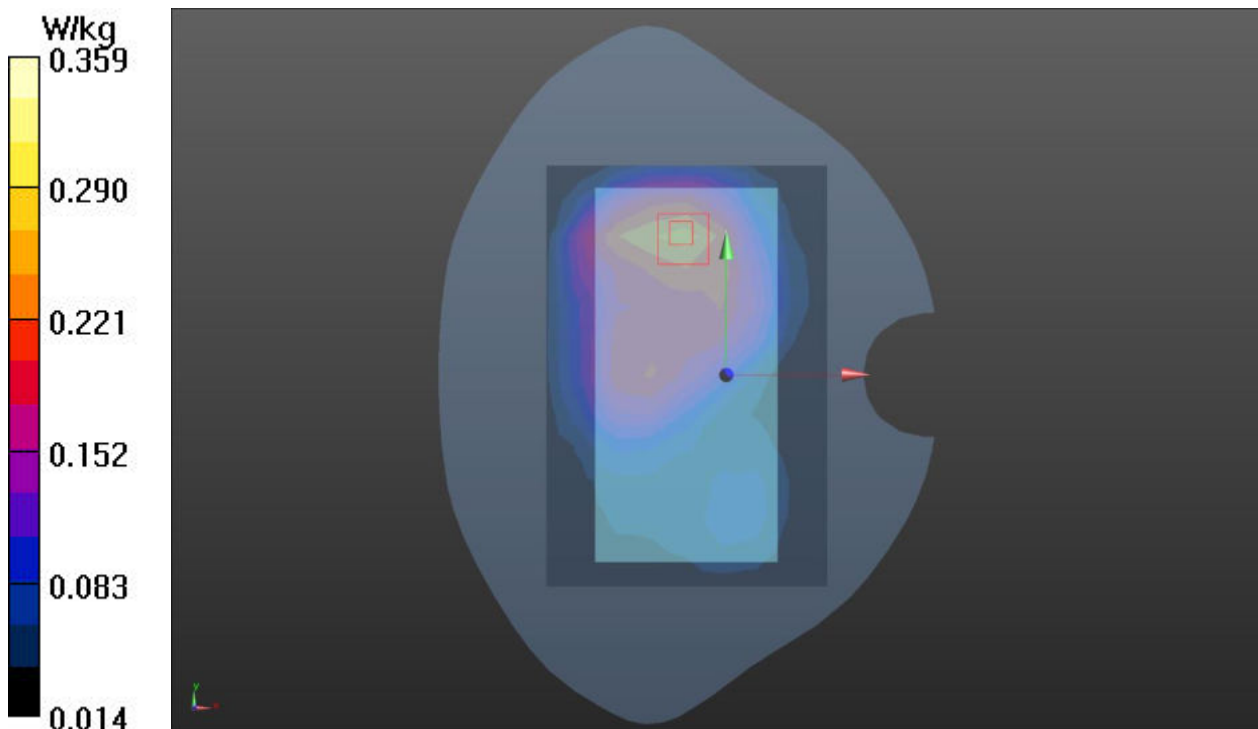
Peak SAR (extrapolated) = 0.370 W/kg

SAR(1 g) = 0.299 W/kg; SAR(10 g) = 0.188 W/kg

Smallest distance from peaks to all points 3 dB below = 11.1 mm

Ratio of SAR at M2 to SAR at M1 = 65.7%

Maximum value of SAR (measured) = 0.359 W/kg



Plot 46 n2 50%RB Back Side 15mm Mid

Date: 2025/4/7

Communication System: UID 0, 5G NR (0); Frequency: 1890 MHz;Duty Cycle: 1:1

Medium parameters used: $f = 1890$ MHz; $\sigma = 1.385$ S/m; $\epsilon_r = 38.397$; $\rho = 1000$ kg/m³

Ambient Temperature:22.3 °C Liquid Temperature: 21.5°C

Phantom section: Flat Section

DASY5 Configuration:

Sensor-Surface: 1.4mm (Mechanical Surface Detection)

Probe: EX3DV4 - SN7689; ConvF(7.88, 8.28, 8.42); Calibrated: 2024/6/4

Electronics: DAE4 Sn1317; Calibrated: 2024/9/10

Phantom: SAM 2; Type: QD000P40CD; Serial: TP:1666

Measurement SW: DASY52, Version 52.10 (4); SEMCAD X Version 14.6.14 (7483)

n2 50%RB Back Side 15mm/Mid/Area Scan (9x13x1): Measurement grid: dx=15mm, dy=15mm

Maximum value of SAR (measured) = 0.560 W/kg

n2 50%RB Back Side 15mm/Mid/Zoom Scan (5x5x7)/Cube 0: Measurement grid: dx=8mm,

dy=8mm, dz=5mm

Reference Value = 17.37 V/m; Power Drift = 0.024 dB

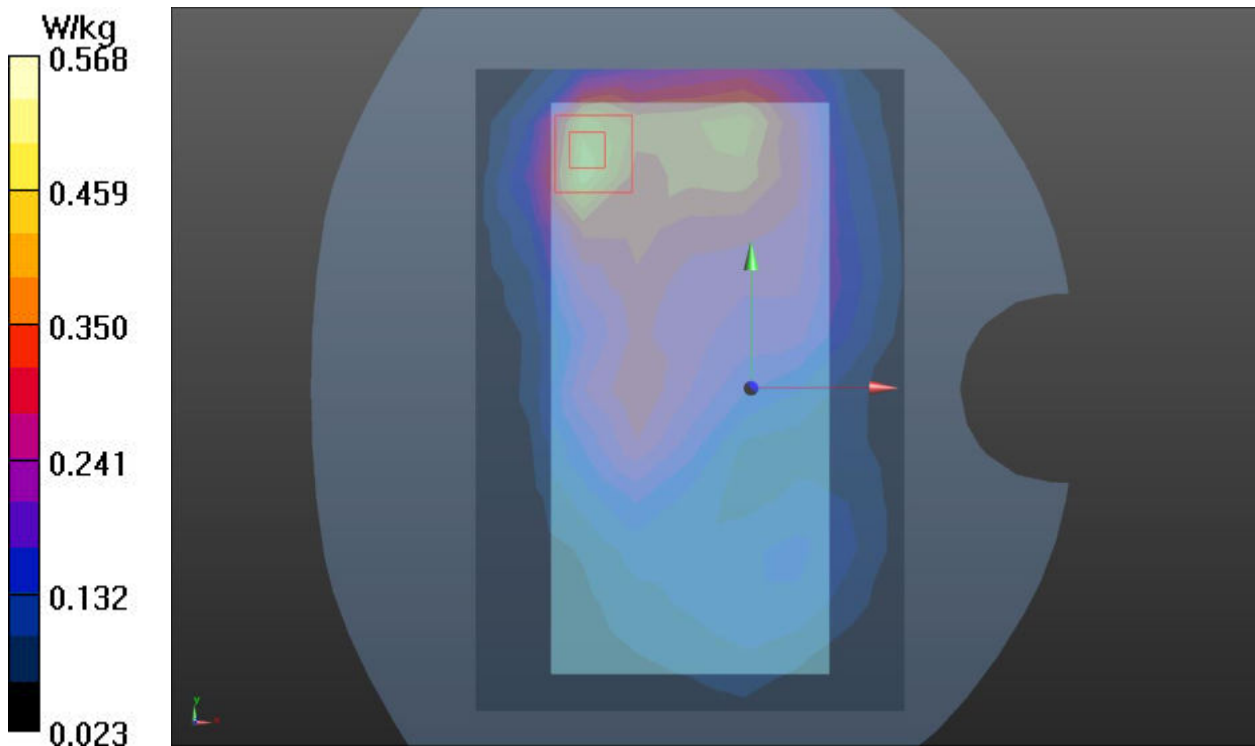
Peak SAR (extrapolated) = 0.837 W/kg

SAR(1 g) = 0.537 W/kg; SAR(10 g) = 0.342 W/kg

Smallest distance from peaks to all points 3 dB below = 12.4 mm

Ratio of SAR at M2 to SAR at M1 = 64.1%

Maximum value of SAR (measured) = 0.568 W/kg



Plot 47 n48 1RB Back Side 15mm High

Date: 2025/3/21

Communication System: UID 0, 5G NR (0); Frequency: 3649.98 MHz; Duty Cycle: 1:1

Medium parameters used: $f = 3650$ MHz; $\sigma = 2.859$ S/m; $\epsilon_r = 39.49$; $\rho = 1000$ kg/m³

Ambient Temperature: 22.3 °C Liquid Temperature: 21.5 °C

Phantom section: Flat Section

DASY5 Configuration:

Sensor-Surface: 1.4mm (Mechanical Surface Detection)

Probe: EX3DV4 - SN7689; ConvF(6.71, 7.05, 7.17); Calibrated: 2024/6/4

Electronics: DAE4 Sn1317; Calibrated: 2024/9/10

Phantom: SAM 2; Type: QD000P40CD; Serial: TP:1666

Measurement SW: DASY52, Version 52.10 (4); SEMCAD X Version 14.6.14 (7483)

n48 1RB Back Side 15mm/High/Area Scan (12x22x1): Measurement grid: dx=10mm, dy=10mm

Maximum value of SAR (measured) = 0.595 W/kg

n48 1RB Back Side 15mm/High/Zoom Scan (7x7x12)/Cube 0: Measurement grid: dx=4mm,

dy=4mm, dz=2mm

Reference Value = 6.685 V/m; Power Drift = 0.13 dB

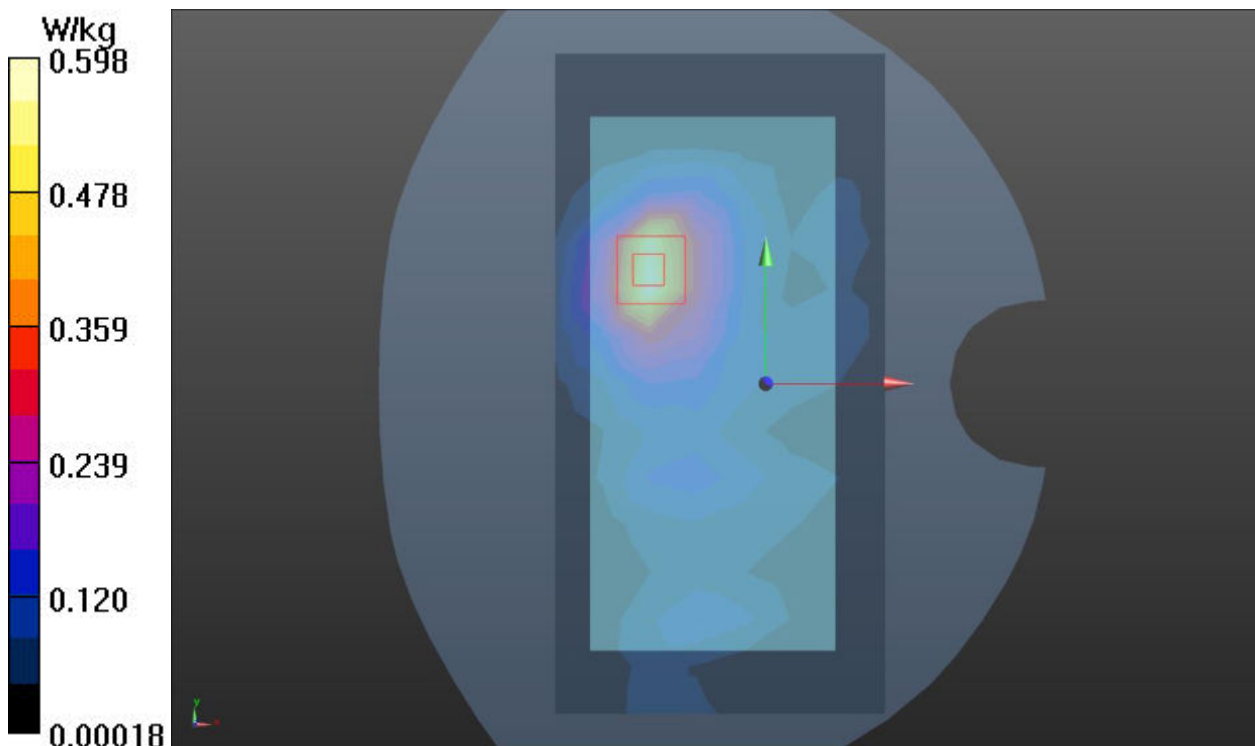
Peak SAR (extrapolated) = 1.18 W/kg

SAR(1 g) = 0.588 W/kg; SAR(10 g) = 0.266 W/kg

Smallest distance from peaks to all points 3 dB below = 13.2 mm

Ratio of SAR at M2 to SAR at M1 = 40.4%

Maximum value of SAR (measured) = 0.598 W/kg



Plot 48 n66 50%RB Back Side 15mm Mid

Date: 2025/3/25

Communication System: UID 0, 5G NR (0); Frequency: 1745 MHz;Duty Cycle: 1:1

Medium parameters used (interpolated): $f = 1745$ MHz; $\sigma = 1.277$ S/m; $\epsilon_r = 38.919$; $\rho = 1000$ kg/m³

Ambient Temperature:22.3 °C Liquid Temperature: 21.5°C

Phantom section: Flat Section

DASY5 Configuration:

Sensor-Surface: 1.4mm (Mechanical Surface Detection)

Probe: EX3DV4 - SN7689; ConvF(8.01, 8.42, 8.56); Calibrated: 2024/6/4

Electronics: DAE4 Sn1317; Calibrated: 2024/9/10

Phantom: SAM 2; Type: QD000P40CD; Serial: TP:1666

Measurement SW: DASY52, Version 52.10 (4); SEMCAD X Version 14.6.14 (7483)

n66 50%RB Back Side 15mm/Mid/Area Scan (9x13x1): Measurement grid: dx=15mm, dy=15mm
Maximum value of SAR (measured) = 0.366 W/kg

n66 50%RB Back Side 15mm/Mid/Zoom Scan (5x5x7)/Cube 0: Measurement grid: dx=8mm, dy=8mm, dz=5mm

Reference Value = 13.18 V/m; Power Drift = 0.014 dB

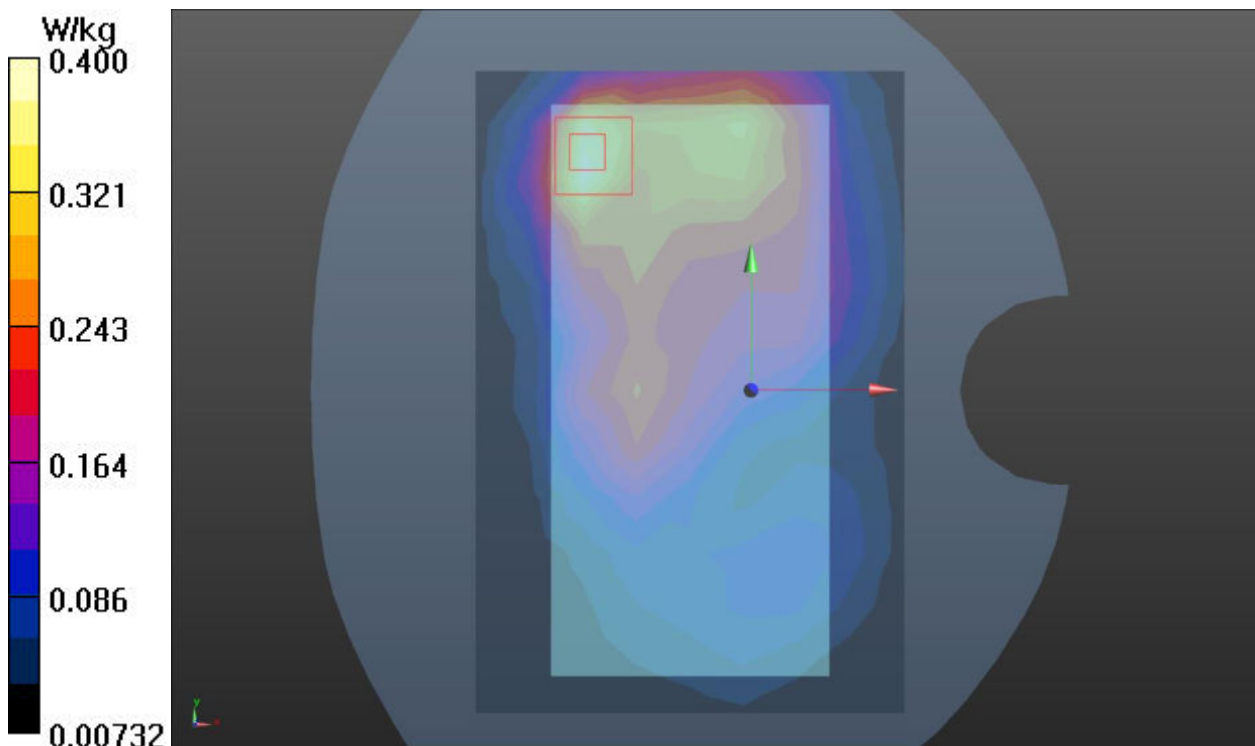
Peak SAR (extrapolated) = 0.465 W/kg

SAR(1 g) = 0.358 W/kg; SAR(10 g) = 0.224 W/kg

Smallest distance from peaks to all points 3 dB below = 23.6 mm

Ratio of SAR at M2 to SAR at M1 = 52.6%

Maximum value of SAR (measured) = 0.400 W/kg



Plot 49 n77 1RB Back Side 15mm High

Date: 2025/3/27

Communication System: UID 0, 5G NR (0); Frequency: 3930 MHz;Duty Cycle: 1:1

Medium parameters used (interpolated): $f = 3930$ MHz; $\sigma = 3.177$ S/m; $\epsilon_r = 38.786$; $\rho = 1000$ kg/m³

Ambient Temperature:22.3 °C Liquid Temperature: 21.5°C

Phantom section: Flat Section

DASY5 Configuration:

Sensor-Surface: 1.4mm (Mechanical Surface Detection)

Probe: EX3DV4 - SN7689; ConvF(6.51, 6.84, 6.95); Calibrated: 2024/6/4

Electronics: DAE4 Sn1317; Calibrated: 2024/9/10

Phantom: SAM 2; Type: QD000P40CD; Serial: TP:1666

Measurement SW: DASY52, Version 52.10 (4); SEMCAD X Version 14.6.14 (7483)

n77 1RB Back Side 15mm/High/Area Scan (12x22x1): Measurement grid: dx=10mm, dy=10mm

Maximum value of SAR (measured) = 0.422 W/kg

n77 1RB Back Side 15mm/High/Zoom Scan (7x7x12)/Cube 0: Measurement grid: dx=4mm,

dy=4mm, dz=2mm

Reference Value = 3.879 V/m; Power Drift = -0.08 dB

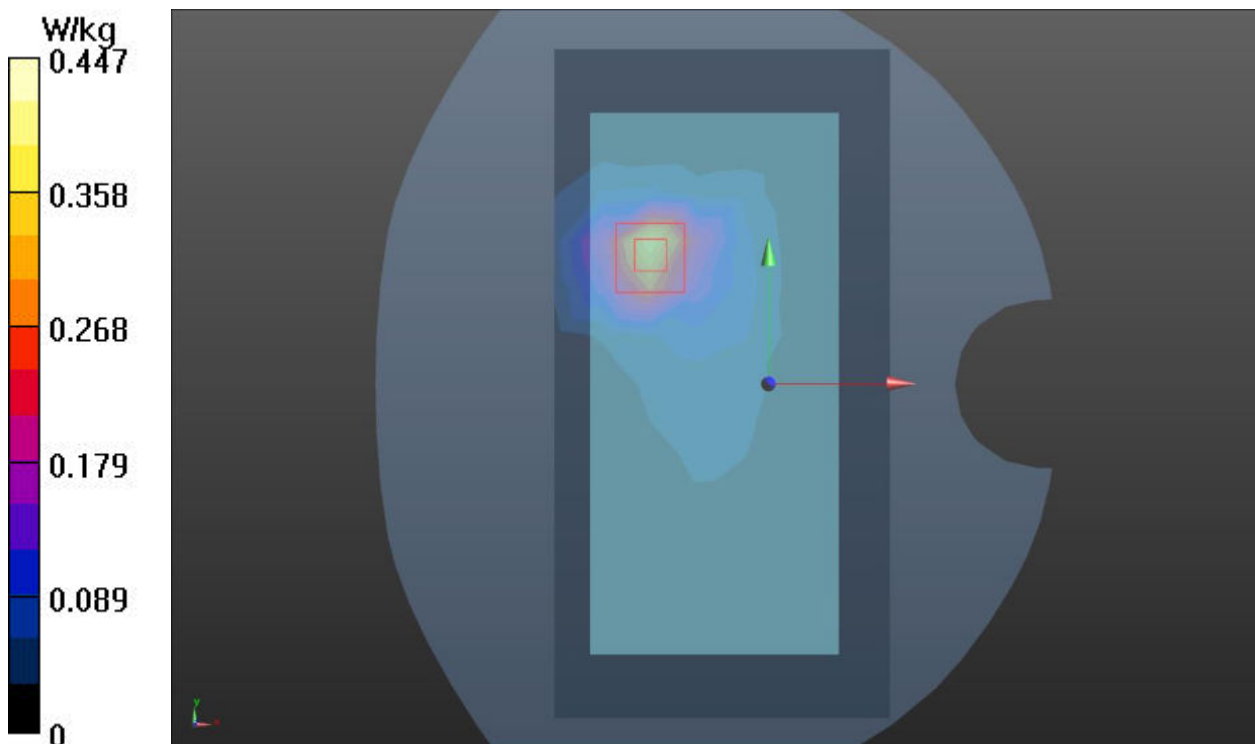
Peak SAR (extrapolated) = 1.17 W/kg

SAR(1 g) = 0.414 W/kg; SAR(10 g) = 0.170 W/kg

Smallest distance from peaks to all points 3 dB below = 11.6 mm

Ratio of SAR at M2 to SAR at M1 = 36.2%

Maximum value of SAR (measured) = 0.447 W/kg



Plot 50 802.11b Back Side 15mm Mid

Date: 2025/3/29

Communication System: UID 0, 802.11b (0); Frequency: 2437 MHz;Duty Cycle: 1:1

Medium parameters used (interpolated): $f = 2437$ MHz; $\sigma = 1.824$ S/m; $\epsilon_r = 38.516$; $\rho = 1000$ kg/m³

Ambient Temperature:22.3 °C Liquid Temperature: 21.5°C

Phantom section: Flat Section

DASY5 Configuration:

Sensor-Surface: 1.4mm (Mechanical Surface Detection)

Probe: EX3DV4 - SN7689; ConvF(7.62, 8.01, 8.14); Calibrated: 2024/6/4

Electronics: DAE4 Sn1317; Calibrated: 2024/9/10

Phantom: SAM 2; Type: QD000P40CD; Serial: TP:1666

Measurement SW: DASY52, Version 52.10 (4); SEMCAD X Version 14.6.14 (7483)

802.11b Back Side 15mm/Mid/Area Scan (10x19x1): Measurement grid: dx=12mm, dy=12mm

Maximum value of SAR (measured) = 0.118 W/kg

802.11b Back Side 15mm/Mid/Zoom Scan (7x7x7)/Cube 0: Measurement grid: dx=5mm, dy=5mm,

dz=5mm

Reference Value = 4.209 V/m; Power Drift = 0.050 dB

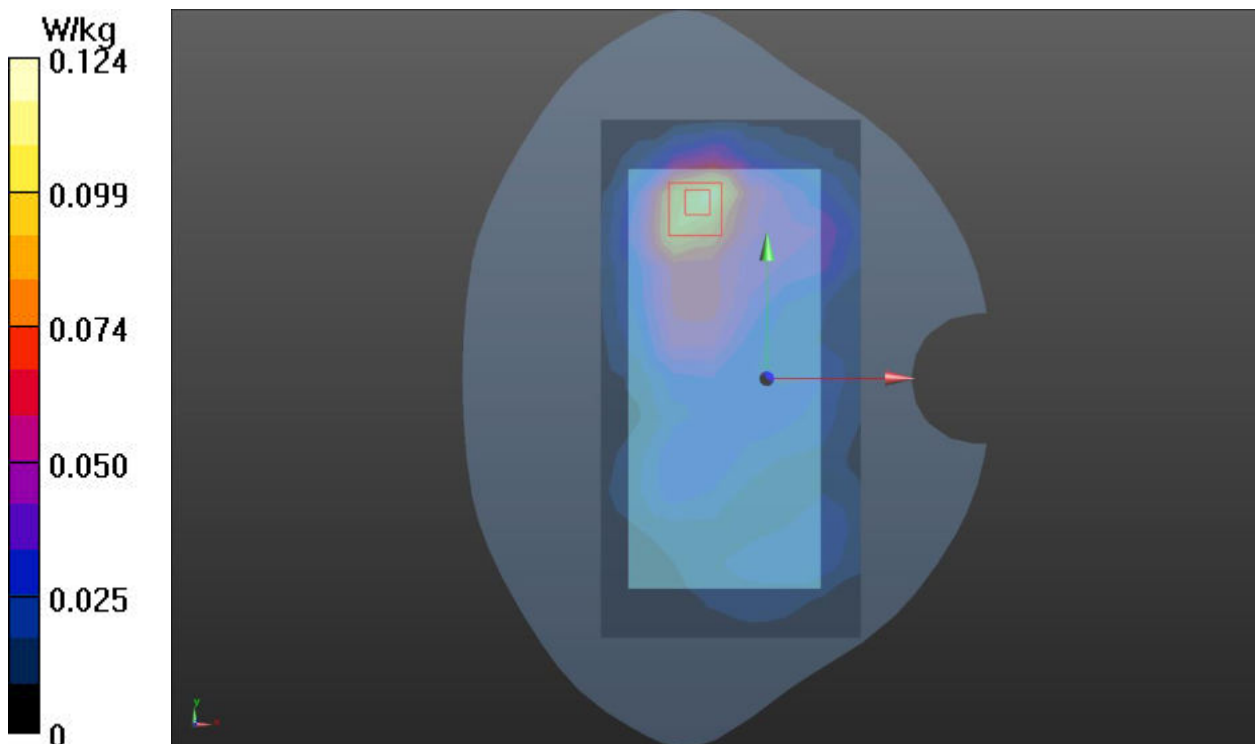
Peak SAR (extrapolated) = 0.229 W/kg

SAR(1 g) = 0.114 W/kg; SAR(10 g) = 0.061 W/kg

Smallest distance from peaks to all points 3 dB below = 16 mm

Ratio of SAR at M2 to SAR at M1 = 50.8%

Maximum value of SAR (measured) = 0.124 W/kg



Plot 51 802.11a Back Side 15mm Mid

Date: 2025/4/1

Communication System: UID 0, 802.11a (0); Frequency: 5580 MHz;Duty Cycle: 1:1

Medium parameters used: $f = 5580$ MHz; $\sigma = 5.144$ S/m; $\epsilon_r = 34.604$; $\rho = 1000$ kg/m³

Ambient Temperature:22.3 °C Liquid Temperature: 21.5°C

Phantom section: Flat Section

DASY5 Configuration:

Sensor-Surface: 1.4mm (Mechanical Surface Detection)

Probe: EX3DV4 - SN7689; ConvF(5.33, 5.60, 5.70); Calibrated: 2024/6/4

Electronics: DAE4 Sn1317; Calibrated: 2024/9/10

Phantom: SAM 2; Type: QD000P40CD; Serial: TP:1666

Measurement SW: DASY52, Version 52.10 (4); SEMCAD X Version 14.6.14 (7483)

802.11a Back Side 15mm/Mid/Area Scan (12x22x1): Measurement grid: dx=10mm, dy=10mm

Maximum value of SAR (measured) = 0.599 W/kg

802.11a Back Side 15mm/Mid/Zoom Scan (7x7x12)/Cube 0: Measurement grid: dx=4mm,

dy=4mm, dz=2mm

Reference Value = 0.7250 V/m; Power Drift = -0.042 dB

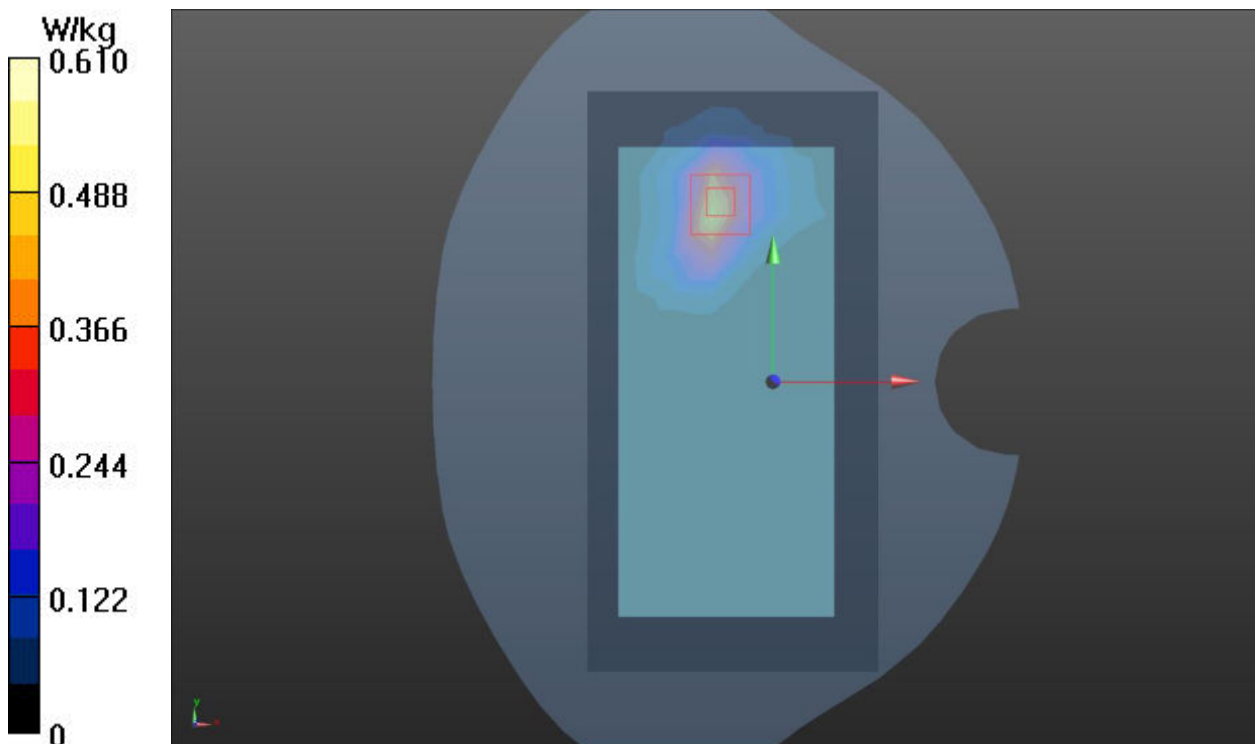
Peak SAR (extrapolated) = 3.58 W/kg

SAR(1 g) = 0.597 W/kg; SAR(10 g) = 0.205 W/kg

Smallest distance from peaks to all points 3 dB below = 10.2 mm

Ratio of SAR at M2 to SAR at M1 = 40.6%

Maximum value of SAR (measured) = 0.610 W/kg



Plot 52 GSM 850 GPRS(3TX) Back Side 10mm Mid

Date: 2025/3/15

Communication System: UID 0, GPRS 3TX (0); Frequency: 836.6 MHz; Duty Cycle: 1:2.76

Medium parameters used (interpolated): $f = 836.6$ MHz; $\sigma = 0.948$ S/m; $\epsilon_r = 42.274$; $\rho = 1000$ kg/m³

Ambient Temperature: 22.3 °C Liquid Temperature: 21.5 °C

Phantom section: Flat Section

DASY5 Configuration:

Sensor-Surface: 1.4mm (Mechanical Surface Detection)

Probe: EX3DV4 - SN7689; ConvF(9.44, 9.92, 10.09); Calibrated: 2024/6/4

Electronics: DAE4 Sn1317; Calibrated: 2024/9/10

Phantom: SAM 2; Type: QD000P40CD; Serial: TP:1666

Measurement SW: DASY52, Version 52.10 (4); SEMCAD X Version 14.6.14 (7483)

GSM 850 GPRS(3TX) Back Side 10mm/Mid/Area Scan (9x13x1): Measurement grid: dx=15mm, dy=15mm

Maximum value of SAR (measured) = 0.594 W/kg

GSM 850 GPRS(3TX) Back Side 10mm/Mid/Zoom Scan (5x5x7)/Cube 0: Measurement grid:

dx=8mm, dy=8mm, dz=5mm

Reference Value = 20.22 V/m; Power Drift = -0.03 dB

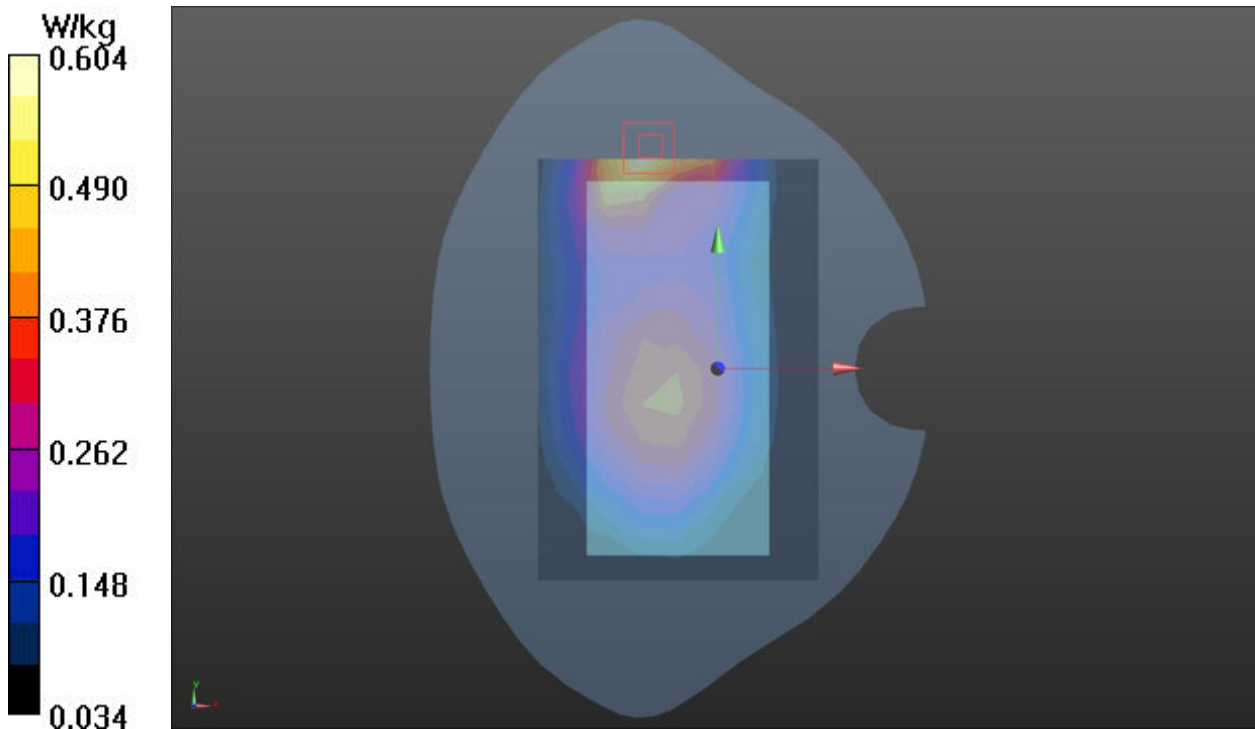
Peak SAR (extrapolated) = 0.935 W/kg

SAR(1 g) = 0.562 W/kg; SAR(10 g) = 0.339 W/kg

Smallest distance from peaks to all points 3 dB below = 16.5 mm

Ratio of SAR at M2 to SAR at M1 = 60.1%

Maximum value of SAR (measured) = 0.604 W/kg



Plot 53 GSM 1900 GPRS(4TX) Back Side 10mm Mid

Date: 2025/3/18

Communication System: UID 0, GPRS 4TX (0); Frequency: 1880 MHz;Duty Cycle: 1:2.07

Medium parameters used: $f = 1880 \text{ MHz}$; $\sigma = 1.4 \text{ S/m}$; $\epsilon_r = 38.43$; $\rho = 1000 \text{ kg/m}^3$

Ambient Temperature:22.3 °C Liquid Temperature: 21.5°C

Phantom section: Flat Section

DASY5 Configuration:

Sensor-Surface: 1.4mm (Mechanical Surface Detection)

Probe: EX3DV4 - SN7689; ConvF(7.88, 8.28, 8.42); Calibrated: 2024/6/4

Electronics: DAE4 Sn1317; Calibrated: 2024/9/10

Phantom: SAM 2; Type: QD000P40CD; Serial: TP:1666

Measurement SW: DASY52, Version 52.10 (4); SEMCAD X Version 14.6.14 (7483)

GSM 1900 GPRS(4TX) Back Side 10mm/Mid/Area Scan (9x13x1): Measurement grid: $dx=15\text{mm}$, $dy=15\text{mm}$

Maximum value of SAR (measured) = 0.614 W/kg

GSM 1900 GPRS(4TX) Back Side 10mm/Mid/Zoom Scan (5x5x7)/Cube 0: Measurement grid: $dx=8\text{mm}$, $dy=8\text{mm}$, $dz=5\text{mm}$

Reference Value = 12.33 V/m; Power Drift = 0.14 dB

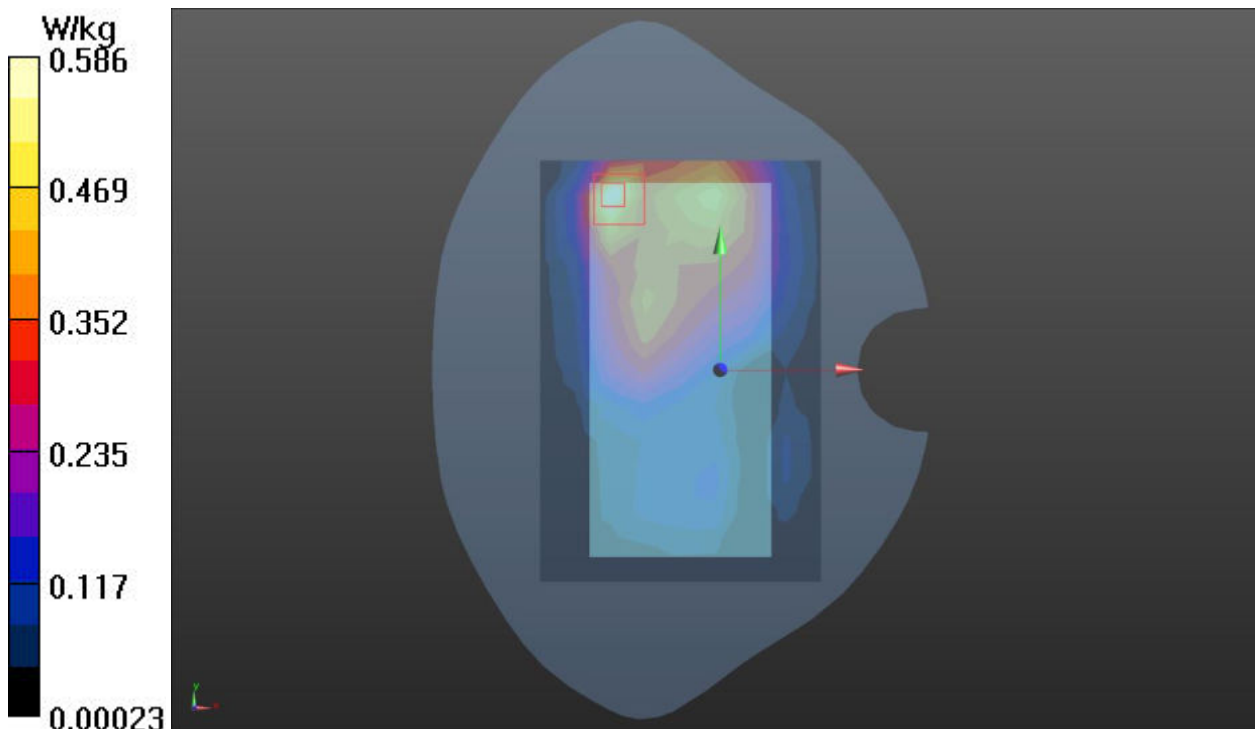
Peak SAR (extrapolated) = 1.27 W/kg

SAR(1 g) = 0.584 W/kg; SAR(10 g) = 0.288 W/kg

Smallest distance from peaks to all points 3 dB below = 15.8 mm

Ratio of SAR at M2 to SAR at M1 = 53.7%

Maximum value of SAR (measured) = 0.586 W/kg



Plot 54 WCDMA B2 Back Side 10mm Mid

Date: 2025/3/20

Communication System: UID 0, WCDMA (0); Frequency: 1880 MHz; Duty Cycle: 1:1

Medium parameters used: $f = 1880$ MHz; $\sigma = 1.4$ S/m; $\epsilon_r = 38.43$; $\rho = 1000$ kg/m³

Ambient Temperature: 22.3 °C Liquid Temperature: 21.5 °C

Phantom section: Flat Section

DASY5 Configuration:

Sensor-Surface: 1.4mm (Mechanical Surface Detection)

Probe: EX3DV4 - SN7689; ConvF(7.88, 8.28, 8.42); Calibrated: 2024/6/4

Electronics: DAE4 Sn1317; Calibrated: 2024/9/10

Phantom: SAM 2; Type: QD000P40CD; Serial: TP:1666

Measurement SW: DASY52, Version 52.10 (4); SEMCAD X Version 14.6.14 (7483)

WCDMA B2 Back Side 10mm/Mid/Area Scan (9x13x1): Measurement grid: dx=15mm, dy=15mm
 Maximum value of SAR (measured) = 0.431 W/kg

WCDMA B2 Back Side 10mm/Mid/Zoom Scan (5x5x7)/Cube 0: Measurement grid: dx=8mm, dy=8mm, dz=5mm

Reference Value = 13.11 V/m; Power Drift = 0.14 dB

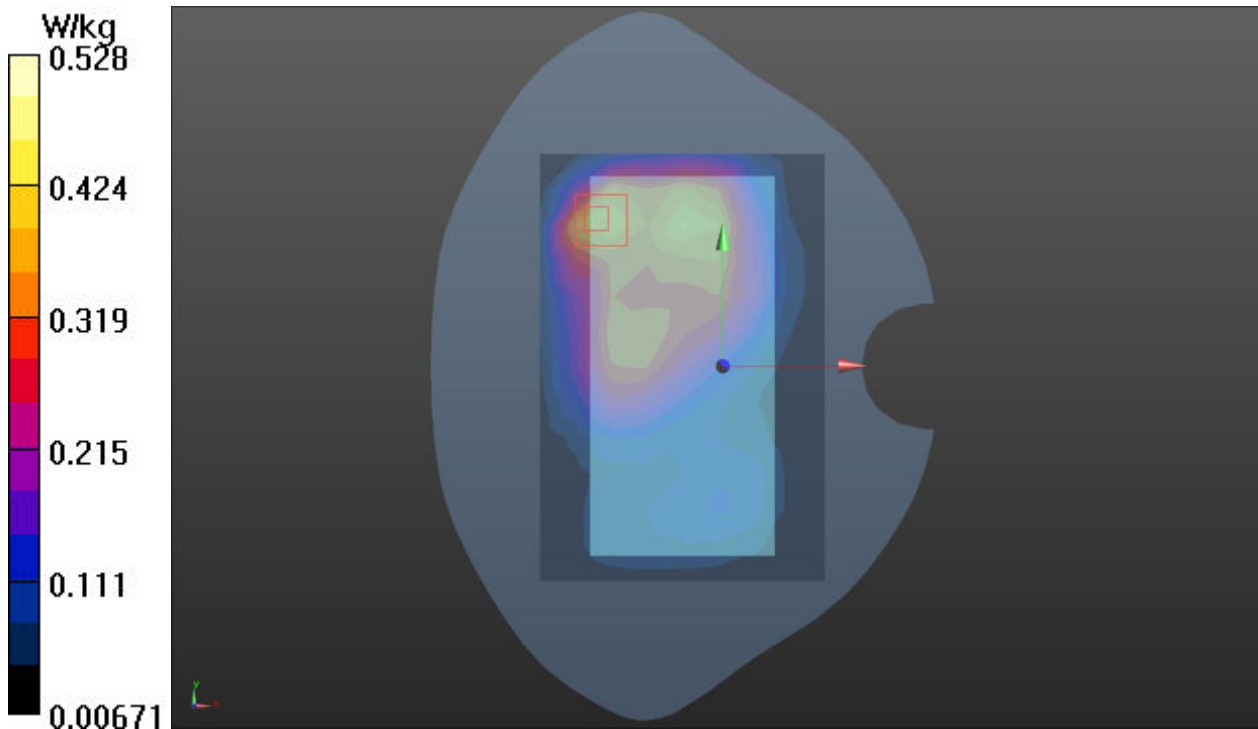
Peak SAR (extrapolated) = 0.903 W/kg

SAR(1 g) = 0.479 W/kg; SAR(10 g) = 0.257 W/kg

Smallest distance from peaks to all points 3 dB below = 11.3 mm

Ratio of SAR at M2 to SAR at M1 = 55.4%

Maximum value of SAR (measured) = 0.528 W/kg



Plot 55 WCDMA B5 Top Edge 10mm Mid

Date: 2025/3/15

Communication System: UID 0, WCDMA (0); Frequency: 836.6 MHz; Duty Cycle: 1:1

Medium parameters used (interpolated): $f = 836.6$ MHz; $\sigma = 0.948$ S/m; $\epsilon_r = 42.274$; $\rho = 1000$ kg/m³

Ambient Temperature: 22.3 °C Liquid Temperature: 21.5 °C

Phantom section: Flat Section

DASY5 Configuration:

Sensor-Surface: 1.4mm (Mechanical Surface Detection)

Probe: EX3DV4 - SN7689; ConvF(9.44, 9.92, 10.09); Calibrated: 2024/6/4

Electronics: DAE4 Sn1317; Calibrated: 2024/9/10

Phantom: SAM 2; Type: QD000P40CD; Serial: TP:1666

Measurement SW: DASY52, Version 52.10 (4); SEMCAD X Version 14.6.14 (7483)

WCDMA B5 Top Edge 10mm/Mid/Area Scan (5x8x1): Measurement grid: dx=15mm, dy=15mm

Maximum value of SAR (measured) = 0.396 W/kg

WCDMA B5 Top Edge 10mm/Mid/Zoom Scan (5x5x7)/Cube 0: Measurement grid: dx=8mm,

dy=8mm, dz=5mm

Reference Value = 19.95 V/m; Power Drift = -0.13 dB

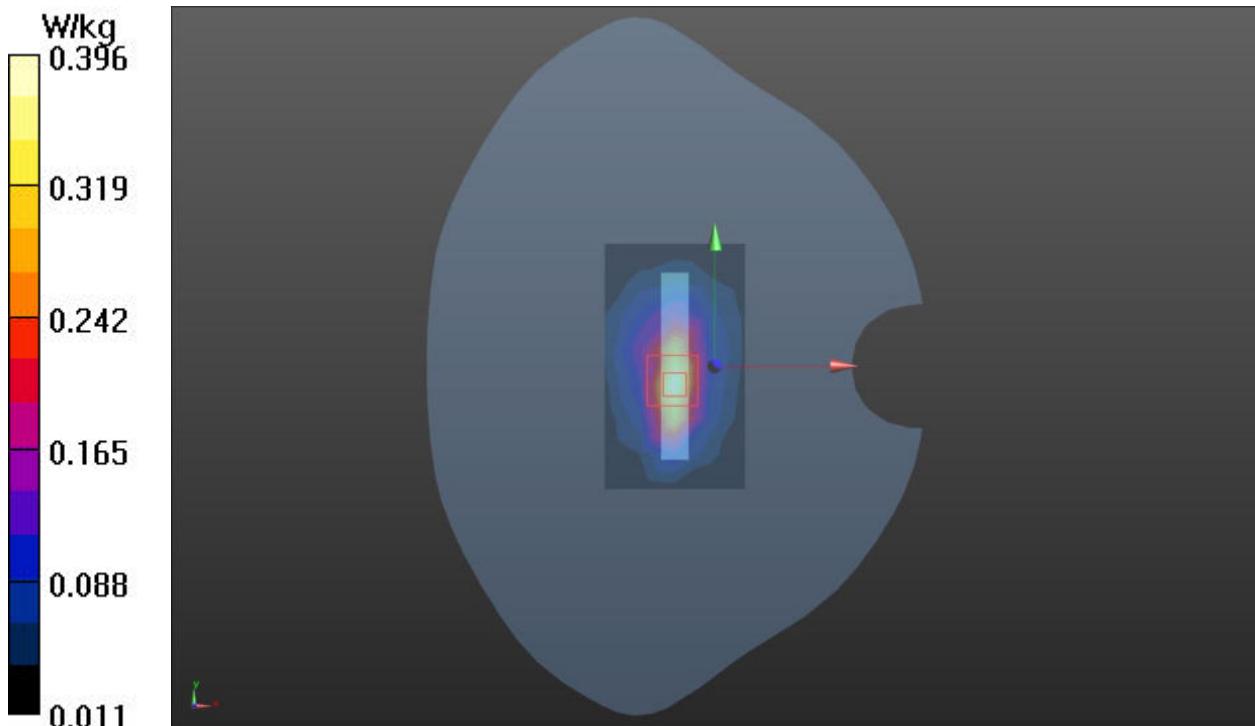
Peak SAR (extrapolated) = 0.679 W/kg

SAR(1 g) = 0.349 W/kg; SAR(10 g) = 0.182 W/kg

Smallest distance from peaks to all points 3 dB below = 11.2 mm

Ratio of SAR at M2 to SAR at M1 = 54.7%

Maximum value of SAR (measured) = 0.396 W/kg



Plot 56 LTE B2 50%RB Bottom Edge 10mm Low

Date: 2025/4/7

Communication System: UID 0, LTE (0); Frequency: 1860 MHz; Duty Cycle: 1:1

Medium parameters used: $f = 1860$ MHz; $\sigma = 1.363$ S/m; $\epsilon_r = 38.557$; $\rho = 1000$ kg/m³

Ambient Temperature: 22.3 °C Liquid Temperature: 21.5 °C

Phantom section: Flat Section

DASY5 Configuration:

Sensor-Surface: 1.4mm (Mechanical Surface Detection)

Probe: EX3DV4 - SN7689; ConvF(7.88, 8.28, 8.42); Calibrated: 2024/6/4

Electronics: DAE4 Sn1317; Calibrated: 2024/9/10

Phantom: SAM 2; Type: QD000P40CD; Serial: TP:1666

Measurement SW: DASY52, Version 52.10 (4); SEMCAD X Version 14.6.14 (7483)

LTE B2 50%RB Bottom Edge 10mm/Low/Area Scan (6x9x1): Measurement grid: dx=15mm, dy=15mm

Maximum value of SAR (measured) = 0.553 W/kg

LTE B2 50%RB Bottom Edge 10mm/Low/Zoom Scan (5x5x7)/Cube 0: Measurement grid:

dx=8mm, dy=8mm, dz=5mm

Reference Value = 22.62 V/m; Power Drift = -0.05 dB

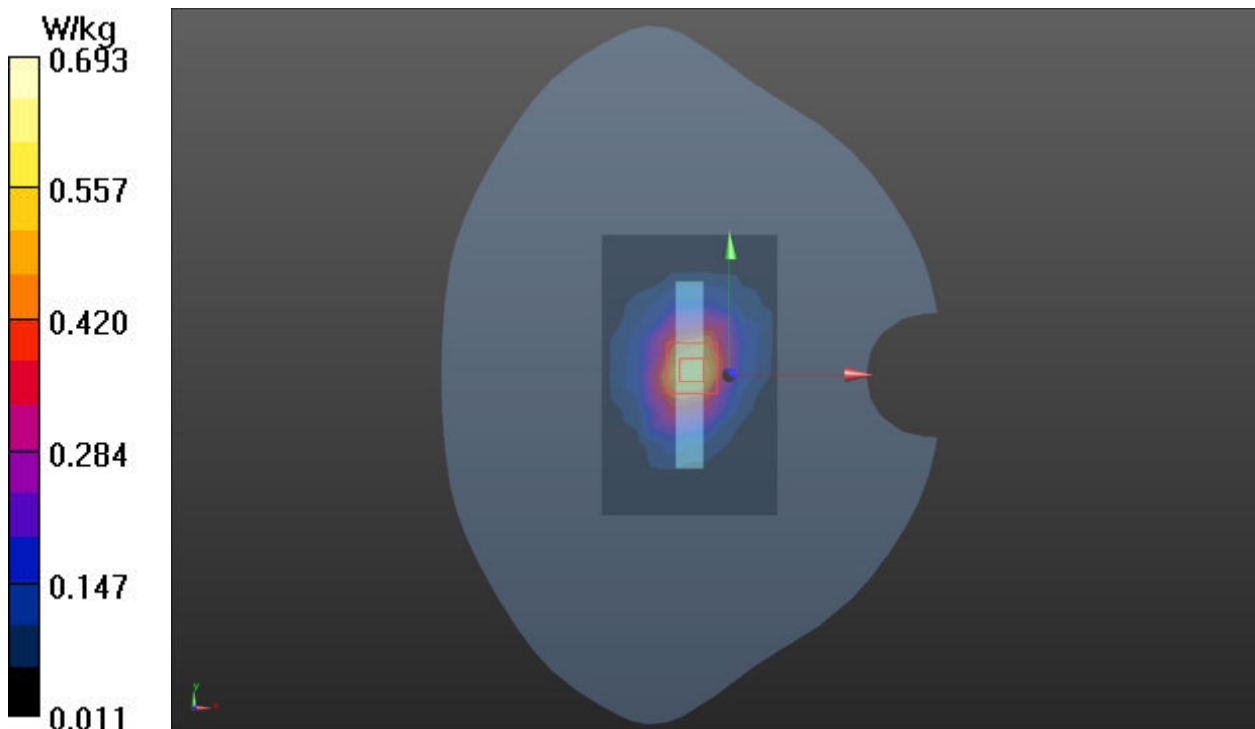
Peak SAR (extrapolated) = 1.11 W/kg

SAR(1 g) = 0.602 W/kg; SAR(10 g) = 0.327 W/kg

Smallest distance from peaks to all points 3 dB below = 13.7 mm

Ratio of SAR at M2 to SAR at M1 = 57.3%

Maximum value of SAR (measured) = 0.693 W/kg



Plot 57 LTE B5 1RB Top Edge 10mm Low

Date: 2025/3/15

Communication System: UID 0, LTE (0); Frequency: 829 MHz; Duty Cycle: 1:1

Medium parameters used (interpolated): $f = 829 \text{ MHz}$; $\sigma = 0.945 \text{ S/m}$; $\epsilon_r = 42.335$; $\rho = 1000 \text{ kg/m}^3$

Ambient Temperature: $22.3 \text{ }^\circ\text{C}$ Liquid Temperature: $21.5 \text{ }^\circ\text{C}$

Phantom section: Flat Section

DASY5 Configuration:

Sensor-Surface: 1.4mm (Mechanical Surface Detection)

Probe: EX3DV4 - SN7689; ConvF(9.44, 9.92, 10.09); Calibrated: 2024/6/4

Electronics: DAE4 Sn1317; Calibrated: 2024/9/10

Phantom: SAM 2; Type: QD000P40CD; Serial: TP:1666

Measurement SW: DASY52, Version 52.10 (4); SEMCAD X Version 14.6.14 (7483)

LTE B5 1RB Top Edge 10mm/Low/Area Scan (5x8x1): Measurement grid: $dx=15\text{mm}$, $dy=15\text{mm}$

Maximum value of SAR (measured) = 0.526 W/kg

LTE B5 1RB Top Edge 10mm/Low/Zoom Scan (5x5x7)/Cube 0: Measurement grid: $dx=8\text{mm}$,

$dy=8\text{mm}$, $dz=5\text{mm}$

Reference Value = 23.09 V/m ; Power Drift = -0.028 dB

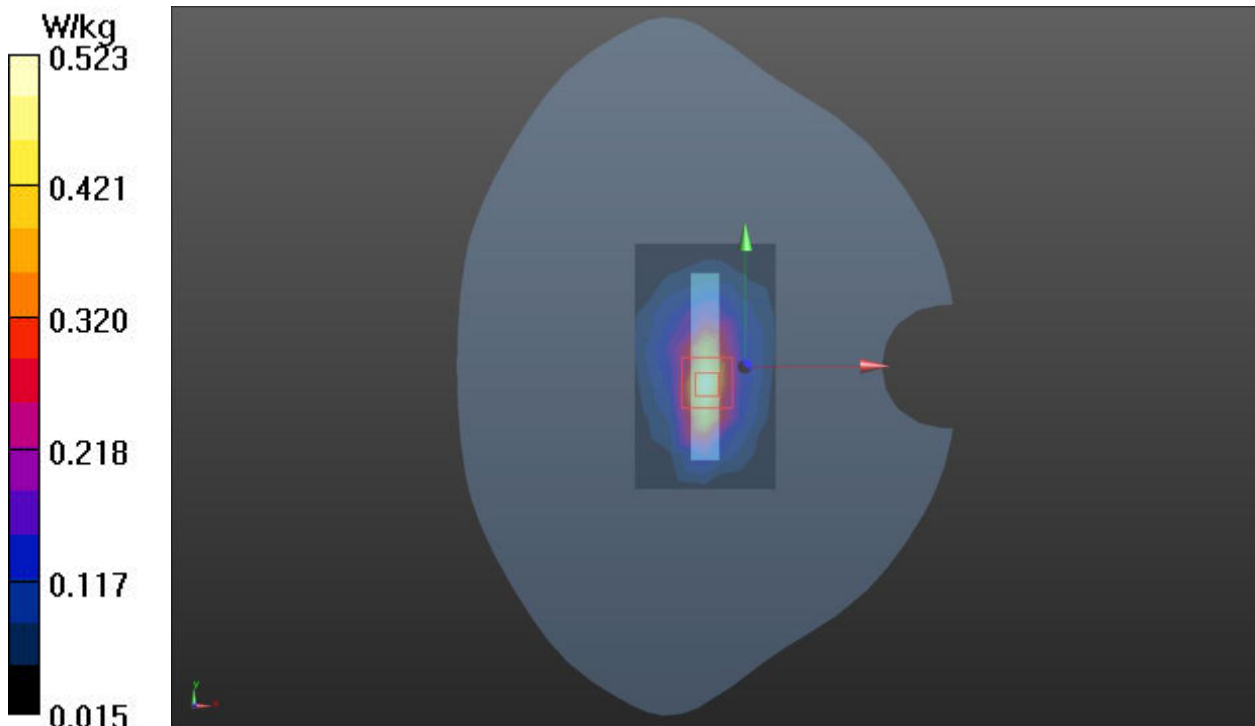
Peak SAR (extrapolated) = 0.916 W/kg

SAR(1 g) = 0.470 W/kg ; SAR(10 g) = 0.246 W/kg

Smallest distance from peaks to all points 3 dB below = 9.6 mm

Ratio of SAR at M2 to SAR at M1 = 55.1%

Maximum value of SAR (measured) = 0.523 W/kg



Plot 58 LTE B7 100%RB Back Side 10mm Low

Date: 2025/3/14

Communication System: UID 0, LTE (0); Frequency: 2510 MHz; Duty Cycle: 1:1

Medium parameters used: $f = 2510$ MHz; $\sigma = 1.906$ S/m; $\epsilon_r = 38.249$; $\rho = 1000$ kg/m³

Ambient Temperature: 22.3 °C Liquid Temperature: 21.5 °C

Phantom section: Flat Section

DASY5 Configuration:

Sensor-Surface: 1.4mm (Mechanical Surface Detection)

Probe: EX3DV4 - SN7689; ConvF(7.39, 7.77, 7.89); Calibrated: 2024/6/4

Electronics: DAE4 Sn1317; Calibrated: 2024/9/10

Phantom: SAM 2; Type: QD000P40CD; Serial: TP:1666

Measurement SW: DASY52, Version 52.10 (4); SEMCAD X Version 14.6.14 (7483)

LTE B7 100%RB Back Side 10mm/Low/Area Scan (10x18x1): Measurement grid: dx=12mm, dy=12mm

Maximum value of SAR (measured) = 1.27 W/kg

LTE B7 100%RB Back Side 10mm/Low/Zoom Scan (7x7x7)/Cube 0: Measurement grid: dx=5mm, dy=5mm, dz=5mm

Reference Value = 6.811 V/m; Power Drift = -0.048 dB

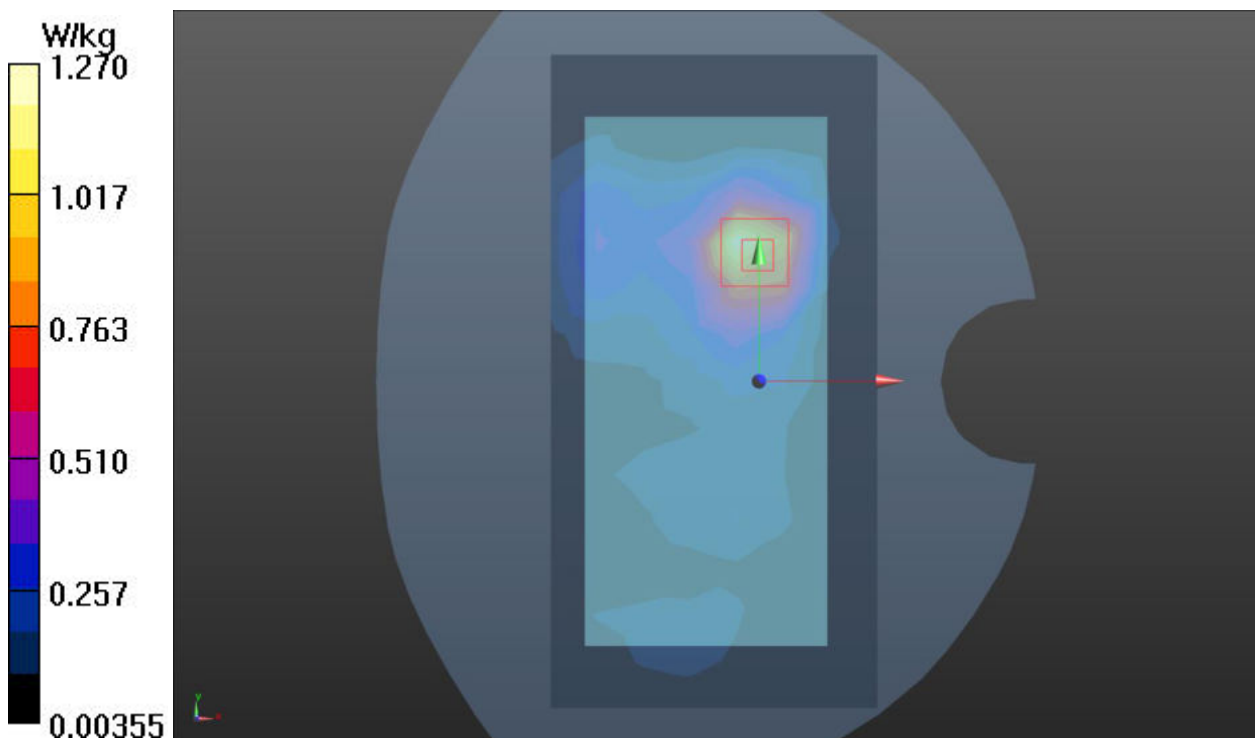
Peak SAR (extrapolated) = 2.42 W/kg

SAR(1 g) = 1.13 W/kg; SAR(10 g) = 0.526 W/kg

Smallest distance from peaks to all points 3 dB below = 12.2 mm

Ratio of SAR at M2 to SAR at M1 = 48.1%

Maximum value of SAR (measured) = 1.27 W/kg



Plot 59 LTE B12 1RB Back Side 10mm Low

Date: 2025/3/19

Communication System: UID 0, LTE (0); Frequency: 704 MHz; Duty Cycle: 1:1

Medium parameters used (interpolated): $f = 704$ MHz; $\sigma = 0.88$ S/m; $\epsilon_r = 43.223$; $\rho = 1000$ kg/m³

Ambient Temperature: 22.3 °C Liquid Temperature: 21.5 °C

Phantom section: Flat Section

DASY5 Configuration:

Sensor-Surface: 1.4mm (Mechanical Surface Detection)

Probe: EX3DV4 - SN7689; ConvF(9.58, 10.07, 10.24); Calibrated: 2024/6/4

Electronics: DAE4 Sn1317; Calibrated: 2024/9/10

Phantom: SAM 2; Type: QD000P40CD; Serial: TP:1666

Measurement SW: DASY52, Version 52.10 (4); SEMCAD X Version 14.6.14 (7483)

LTE B12 1RB Back Side 10mm/Low/Area Scan (9x13x1): Measurement grid: dx=15mm, dy=15mm

Maximum value of SAR (measured) = 0.245 W/kg

LTE B12 1RB Back Side 10mm/Low/Zoom Scan (5x5x7)/Cube 0: Measurement grid: dx=8mm,

dy=8mm, dz=5mm

Reference Value = 16.29 V/m; Power Drift = 0.033 dB

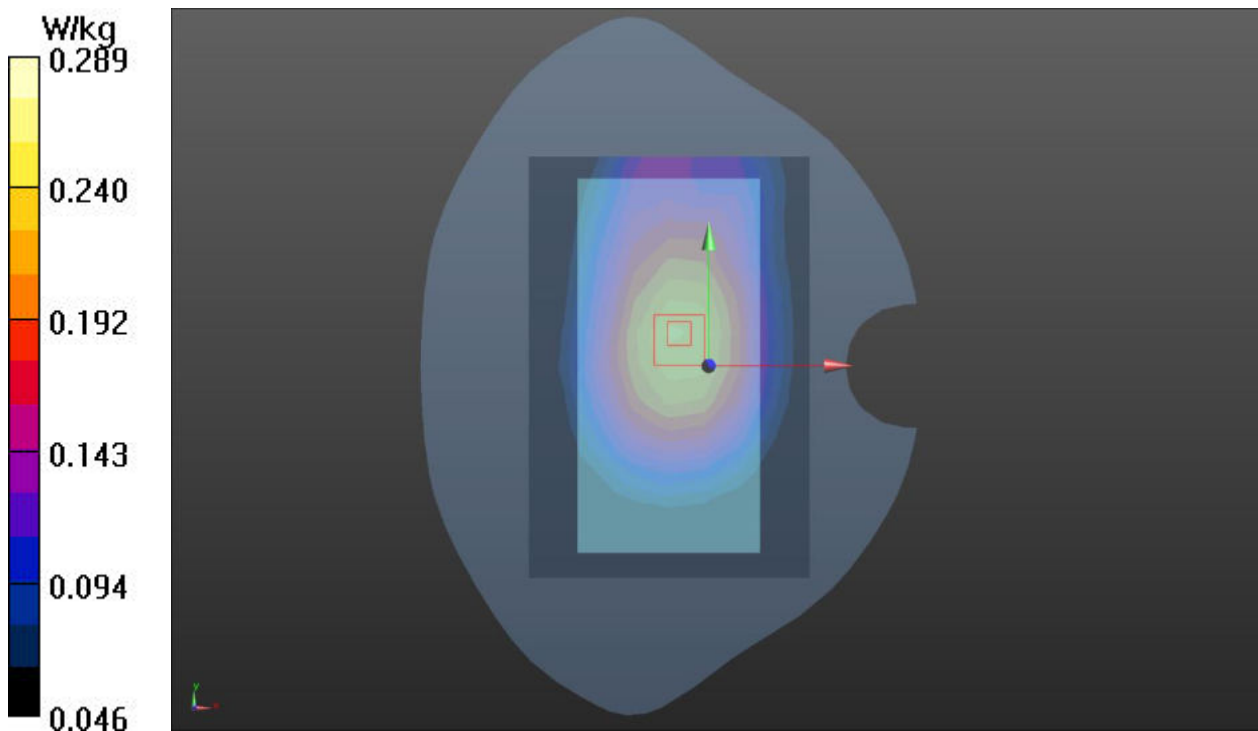
Peak SAR (extrapolated) = 0.497 W/kg

SAR(1 g) = 0.240 W/kg; SAR(10 g) = 0.177 W/kg

Smallest distance from peaks to all points 3 dB below = 11.6 mm

Ratio of SAR at M2 to SAR at M1 = 78.5%

Maximum value of SAR (measured) = 0.289 W/kg



Plot 60 LTE B13 1RB Top Edge 10mm Mid

Date: 2025/3/19

Communication System: UID 0, LTE (0); Frequency: 782 MHz; Duty Cycle: 1:1

Medium parameters used (interpolated): $f = 782 \text{ MHz}$; $\sigma = 0.929 \text{ S/m}$; $\epsilon_r = 42.422$; $\rho = 1000 \text{ kg/m}^3$

Ambient Temperature: $22.3 \text{ }^\circ\text{C}$ Liquid Temperature: $21.5 \text{ }^\circ\text{C}$

Phantom section: Flat Section

DASY5 Configuration:

Sensor-Surface: 1.4mm (Mechanical Surface Detection)

Probe: EX3DV4 - SN7689; ConvF(9.58, 10.07, 10.24); Calibrated: 2024/6/4

Electronics: DAE4 Sn1317; Calibrated: 2024/9/10

Phantom: SAM 2; Type: QD000P40CD; Serial: TP:1666

Measurement SW: DASY52, Version 52.10 (4); SEMCAD X Version 14.6.14 (7483)

LTE B13 1RB Top Edge 10mm/Mid/Area Scan (5x8x1): Measurement grid: $dx=15\text{mm}$, $dy=15\text{mm}$

Maximum value of SAR (measured) = 0.509 W/kg

LTE B13 1RB Top Edge 10mm/Mid/Zoom Scan (5x5x7)/Cube 0: Measurement grid: $dx=8\text{mm}$,

$dy=8\text{mm}$, $dz=5\text{mm}$

Reference Value = 23.19 V/m ; Power Drift = -0.024 dB

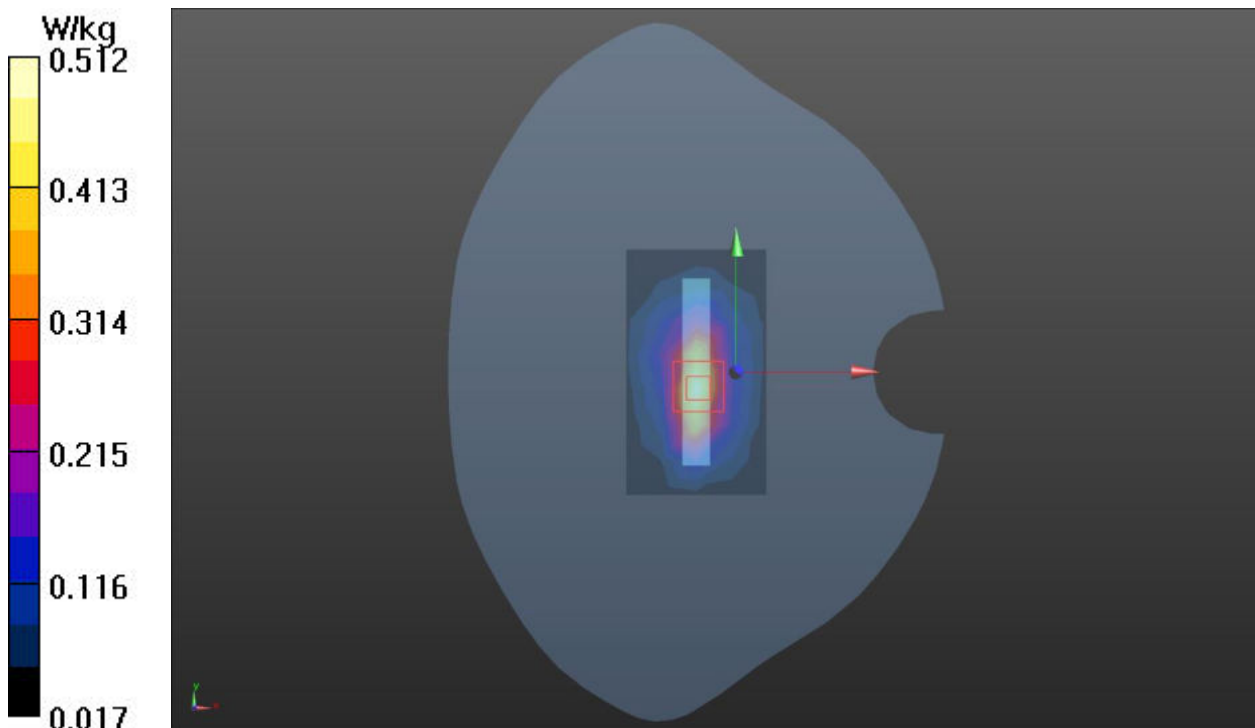
Peak SAR (extrapolated) = 0.888 W/kg

SAR(1 g) = 0.458 W/kg ; SAR(10 g) = 0.241 W/kg

Smallest distance from peaks to all points 3 dB below = 10.1 mm

Ratio of SAR at M2 to SAR at M1 = 55.4%

Maximum value of SAR (measured) = 0.512 W/kg



Plot 61 LTE B48 50%RB Back Side 10mm Low

Date: 2025/4/7

Communication System: UID 0, LTE (0); Frequency: 3660 MHz; Duty Cycle: 1:1.58

Medium parameters used: $f = 3660$ MHz; $\sigma = 2.869$ S/m; $\epsilon_r = 39.464$; $\rho = 1000$ kg/m³

Ambient Temperature: 22.3 °C Liquid Temperature: 21.5 °C

Phantom section: Flat Section

DASY5 Configuration:

Sensor-Surface: 1.4mm (Mechanical Surface Detection)

Probe: EX3DV4 - SN7689; ConvF(6.71, 7.05, 7.17); Calibrated: 2024/6/4

Electronics: DAE4 Sn1317; Calibrated: 2024/9/10

Phantom: SAM 2; Type: QD000P40CD; Serial: TP:1666

Measurement SW: DASY52, Version 52.10 (4); SEMCAD X Version 14.6.14 (7483)

LTE B48 50%RB Back Side 10mm/Low/Area Scan (12x22x1): Measurement grid: dx=10mm, dy=10mm

Maximum value of SAR (measured) = 0.455 W/kg

LTE B48 50%RB Back Side 10mm/Low/Zoom Scan (7x7x12)/Cube 0: Measurement grid: dx=4mm, dy=4mm, dz=2mm

Reference Value = 5.573 V/m; Power Drift = 0.020 dB

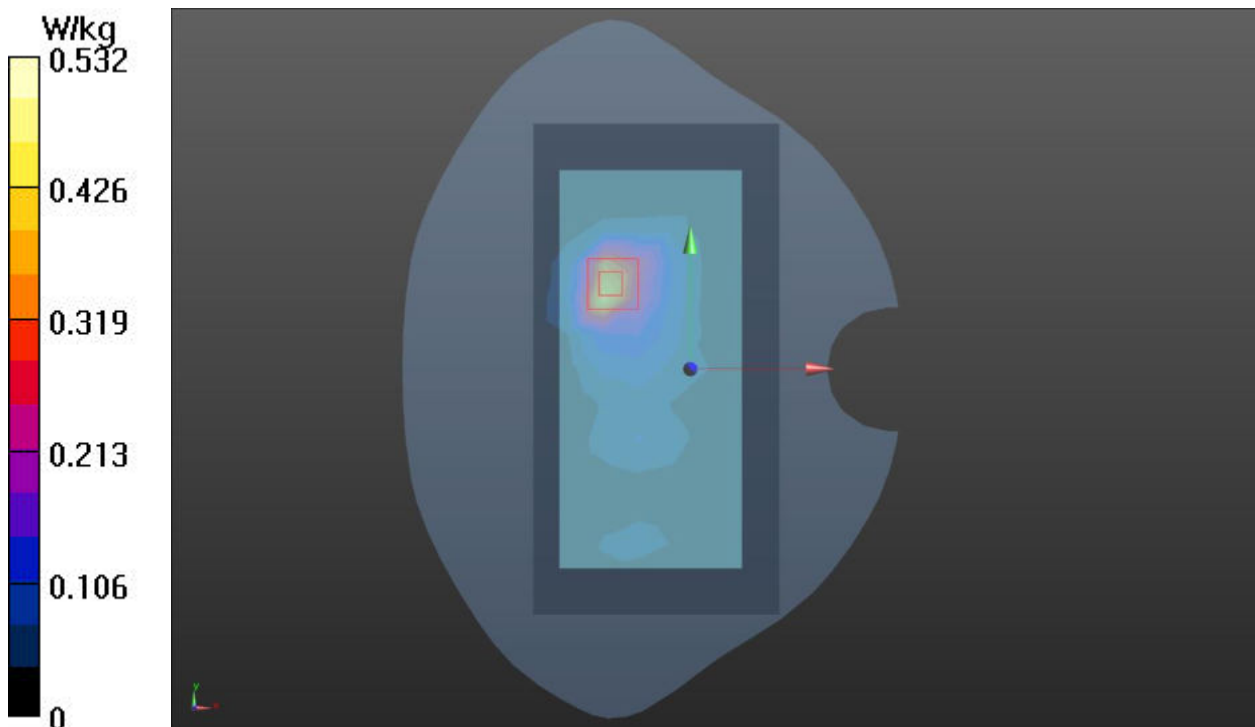
Peak SAR (extrapolated) = 1.18 W/kg

SAR(1 g) = 0.471 W/kg; SAR(10 g) = 0.198 W/kg

Smallest distance from peaks to all points 3 dB below = 10.7 mm

Ratio of SAR at M2 to SAR at M1 = 40.5%

Maximum value of SAR (measured) = 0.532 W/kg



Plot 62 LTE B66 50%RB Back Side 10mm Low

Date: 2025/3/24

Communication System: UID 0, LTE (0); Frequency: 1720 MHz; Duty Cycle: 1:1

Medium parameters used: $f = 1720$ MHz; $\sigma = 1.265$ S/m; $\epsilon_r = 38.975$; $\rho = 1000$ kg/m³

Ambient Temperature: 22.3 °C Liquid Temperature: 21.5 °C

Phantom section: Flat Section

DASY5 Configuration:

Sensor-Surface: 1.4mm (Mechanical Surface Detection)

Probe: EX3DV4 - SN7689; ConvF(8.01, 8.42, 8.56); Calibrated: 2024/6/4

Electronics: DAE4 Sn1317; Calibrated: 2024/9/10

Phantom: SAM 2; Type: QD000P40CD; Serial: TP:1666

Measurement SW: DASY52, Version 52.10 (4); SEMCAD X Version 14.6.14 (7483)

LTE B66 50%RB Back Side 10mm/Low/Area Scan (9x13x1): Measurement grid: dx=15mm, dy=15mm

Maximum value of SAR (measured) = 0.385 W/kg

LTE B66 50%RB Back Side 10mm/Low/Zoom Scan (5x5x7)/Cube 0: Measurement grid: dx=8mm, dy=8mm, dz=5mm

Reference Value = 11.52 V/m; Power Drift = 0.023 dB

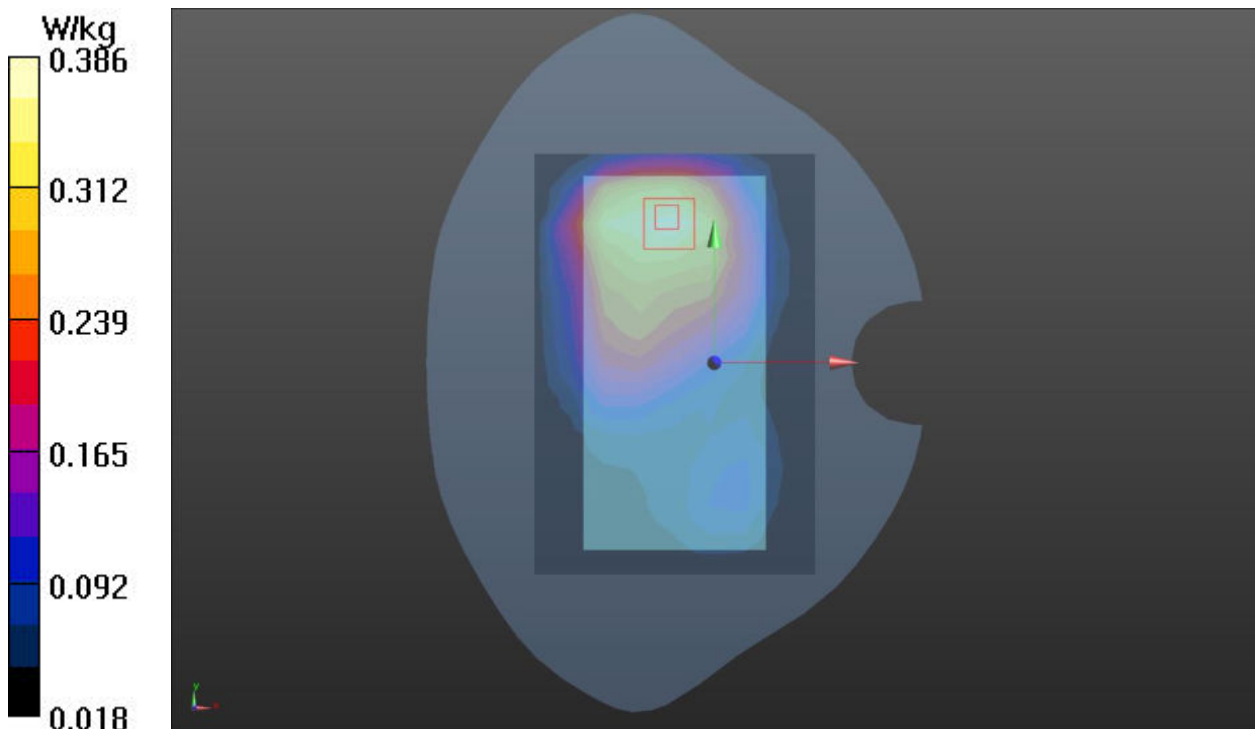
Peak SAR (extrapolated) = 0.543 W/kg

SAR(1 g) = 0.364 W/kg; SAR(10 g) = 0.240 W/kg

Smallest distance from peaks to all points 3 dB below = 15.5 mm

Ratio of SAR at M2 to SAR at M1 = 66.9%

Maximum value of SAR (measured) = 0.386 W/kg



Plot 63 n2 50%RB Back Side 10mm Mid

Date: 2025/4/7

Communication System: UID 0, 5G NR (0); Frequency: 1890 MHz; Duty Cycle: 1:1

Medium parameters used: $f = 1890$ MHz; $\sigma = 1.385$ S/m; $\epsilon_r = 38.397$; $\rho = 1000$ kg/m³

Ambient Temperature: 22.3 °C Liquid Temperature: 21.5 °C

Phantom section: Flat Section

DASY5 Configuration:

Sensor-Surface: 1.4mm (Mechanical Surface Detection)

Probe: EX3DV4 - SN7689; ConvF(7.88, 8.28, 8.42); Calibrated: 2024/6/4

Electronics: DAE4 Sn1317; Calibrated: 2024/9/10

Phantom: SAM 2; Type: QD000P40CD; Serial: TP:1666

Measurement SW: DASY52, Version 52.10 (4); SEMCAD X Version 14.6.14 (7483)

n2 50%RB Back Side 10mm/Mid/Area Scan (9x13x1): Measurement grid: dx=15mm, dy=15mm

Maximum value of SAR (measured) = 0.528 W/kg

n2 50%RB Back Side 10mm/Mid/Zoom Scan (5x5x7)/Cube 0: Measurement grid: dx=8mm,

dy=8mm, dz=5mm

Reference Value = 13.83 V/m; Power Drift = 0.020 dB

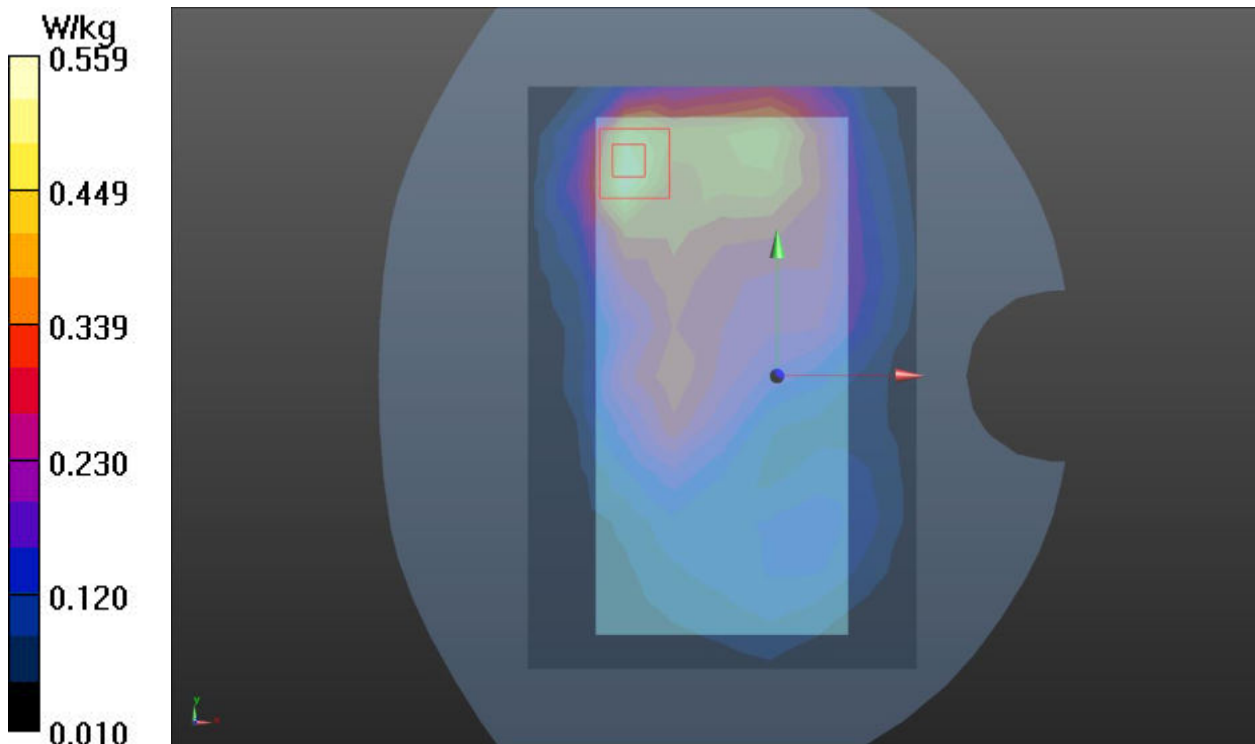
Peak SAR (extrapolated) = 0.932 W/kg

SAR(1 g) = 0.510 W/kg; SAR(10 g) = 0.280 W/kg

Smallest distance from peaks to all points 3 dB below = 12.8 mm

Ratio of SAR at M2 to SAR at M1 = 55.9%

Maximum value of SAR (measured) = 0.559 W/kg



Plot 64 n5 1RB Back Side 10mm Mid

Date: 2025/3/15

Communication System: UID 0, 5G NR (0); Frequency: 836.5 MHz; Duty Cycle: 1:1

Medium parameters used (interpolated): $f = 836.5$ MHz; $\sigma = 0.948$ S/m; $\epsilon_r = 42.275$; $\rho = 1000$ kg/m³

Ambient Temperature: 22.3 °C Liquid Temperature: 21.5 °C

Phantom section: Flat Section

DASY5 Configuration:

Sensor-Surface: 1.4mm (Mechanical Surface Detection)

Probe: EX3DV4 - SN7689; ConvF(9.44, 9.92, 10.09); Calibrated: 2024/6/4

Electronics: DAE4 Sn1317; Calibrated: 2024/9/10

Phantom: SAM 2; Type: QD000P40CD; Serial: TP:1666

Measurement SW: DASY52, Version 52.10 (4); SEMCAD X Version 14.6.14 (7483)

n5 1RB Back Side 10mm/Mid/Area Scan (9x13x1): Measurement grid: dx=15mm, dy=15mm

Maximum value of SAR (measured) = 0.387 W/kg

n5 1RB Back Side 10mm/Mid/Zoom Scan (5x5x7)/Cube 0: Measurement grid: dx=8mm, dy=8mm,

dz=5mm

Reference Value = 15.72 V/m; Power Drift = 0.020 dB

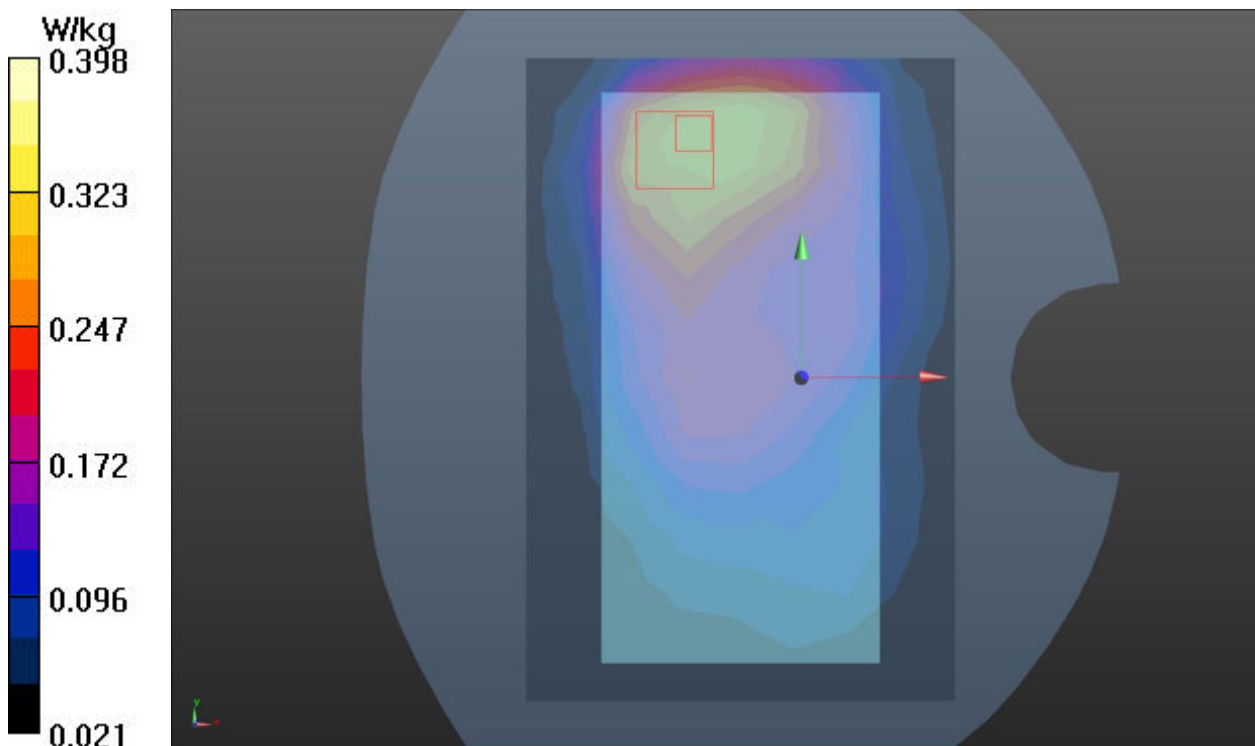
Peak SAR (extrapolated) = 0.646 W/kg

SAR(1 g) = 0.376 W/kg; SAR(10 g) = 0.222 W/kg

Smallest distance from peaks to all points 3 dB below = 14.3 mm

Ratio of SAR at M2 to SAR at M1 = 60.3%

Maximum value of SAR (measured) = 0.398 W/kg



Plot 65 n48 50%RB Back Side 10mm Low

Date: 2025/3/21

Communication System: UID 0, 5G NR (0); Frequency: 3600 MHz;Duty Cycle: 1:1

Medium parameters used: $f = 3600$ MHz; $\sigma = 2.806$ S/m; $\epsilon_r = 39.618$; $\rho = 1000$ kg/m³

Ambient Temperature:22.3 °C Liquid Temperature: 21.5°C

Phantom section: Flat Section

DASY5 Configuration:

Sensor-Surface: 1.4mm (Mechanical Surface Detection)

Probe: EX3DV4 - SN7689; ConvF(6.71, 7.05, 7.17); Calibrated: 2024/6/4

Electronics: DAE4 Sn1317; Calibrated: 2024/9/10

Phantom: SAM 2; Type: QD000P40CD; Serial: TP:1666

Measurement SW: DASY52, Version 52.10 (4); SEMCAD X Version 14.6.14 (7483)

n48 50%RB Back Side 10mm/Low/Area Scan (12x22x1): Measurement grid: dx=10mm, dy=10mm

Maximum value of SAR (measured) = 0.620 W/kg

n48 50%RB Back Side 10mm/Low/Zoom Scan (7x7x12)/Cube 0: Measurement grid: dx=4mm,

dy=4mm, dz=2mm

Reference Value = 5.659 V/m; Power Drift = 0.052 dB

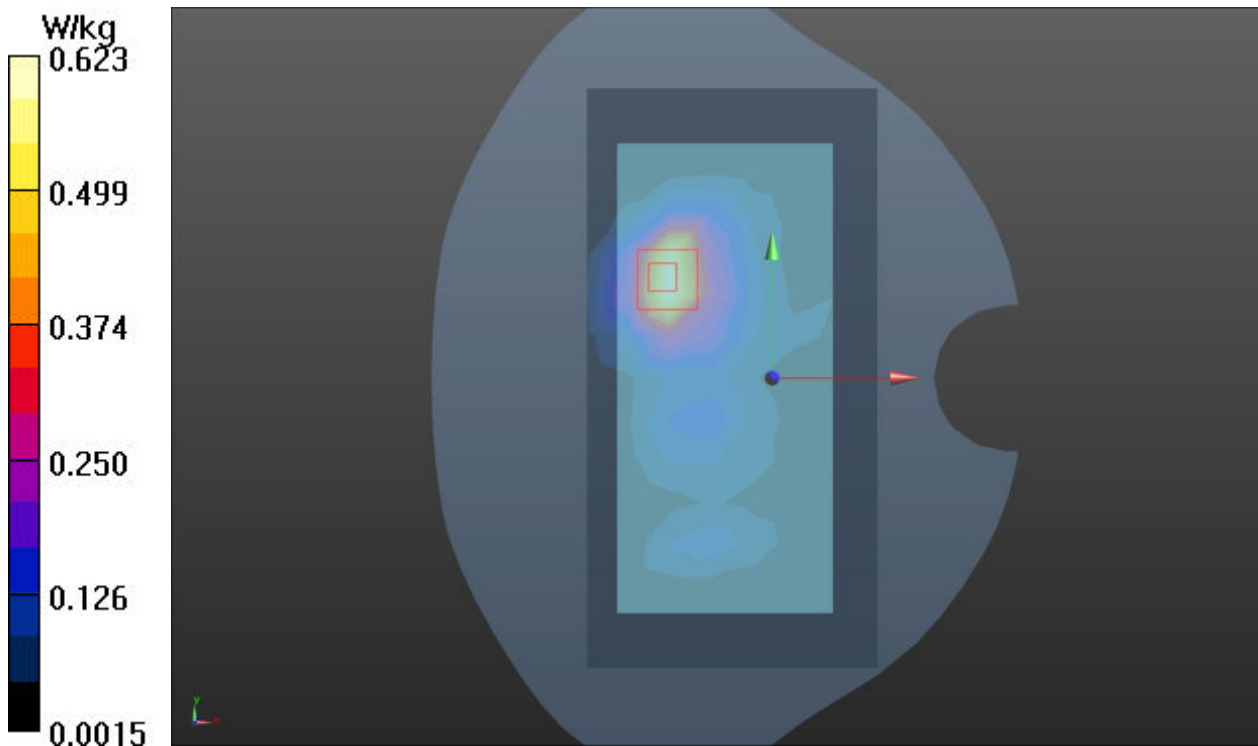
Peak SAR (extrapolated) = 1.48 W/kg

SAR(1 g) = 0.618 W/kg; SAR(10 g) = 0.273 W/kg

Smallest distance from peaks to all points 3 dB below = 10.1 mm

Ratio of SAR at M2 to SAR at M1 = 42.1%

Maximum value of SAR (measured) = 0.623 W/kg



Plot 66 n66 50%RB Back Side 10mm Mid

Date: 2025/3/25

Communication System: UID 0, 5G NR (0); Frequency: 1745 MHz;Duty Cycle: 1:1

Medium parameters used (interpolated): $f = 1745$ MHz; $\sigma = 1.277$ S/m; $\epsilon_r = 38.919$; $\rho = 1000$ kg/m³

Ambient Temperature:22.3 °C Liquid Temperature: 21.5°C

Phantom section: Flat Section

DASY5 Configuration:

Sensor-Surface: 1.4mm (Mechanical Surface Detection)

Probe: EX3DV4 - SN7689; ConvF(8.01, 8.42, 8.56); Calibrated: 2024/6/4

Electronics: DAE4 Sn1317; Calibrated: 2024/9/10

Phantom: SAM 2; Type: QD000P40CD; Serial: TP:1666

Measurement SW: DASY52, Version 52.10 (4); SEMCAD X Version 14.6.14 (7483)

n66 50%RB Back Side 10mm/Mid/Area Scan (9x13x1): Measurement grid: dx=15mm, dy=15mm
Maximum value of SAR (measured) = 0.399 W/kg

n66 50%RB Back Side 10mm/Mid/Zoom Scan (5x5x7)/Cube 0: Measurement grid: dx=8mm, dy=8mm, dz=5mm

Reference Value = 12.82 V/m; Power Drift = 0.07 dB

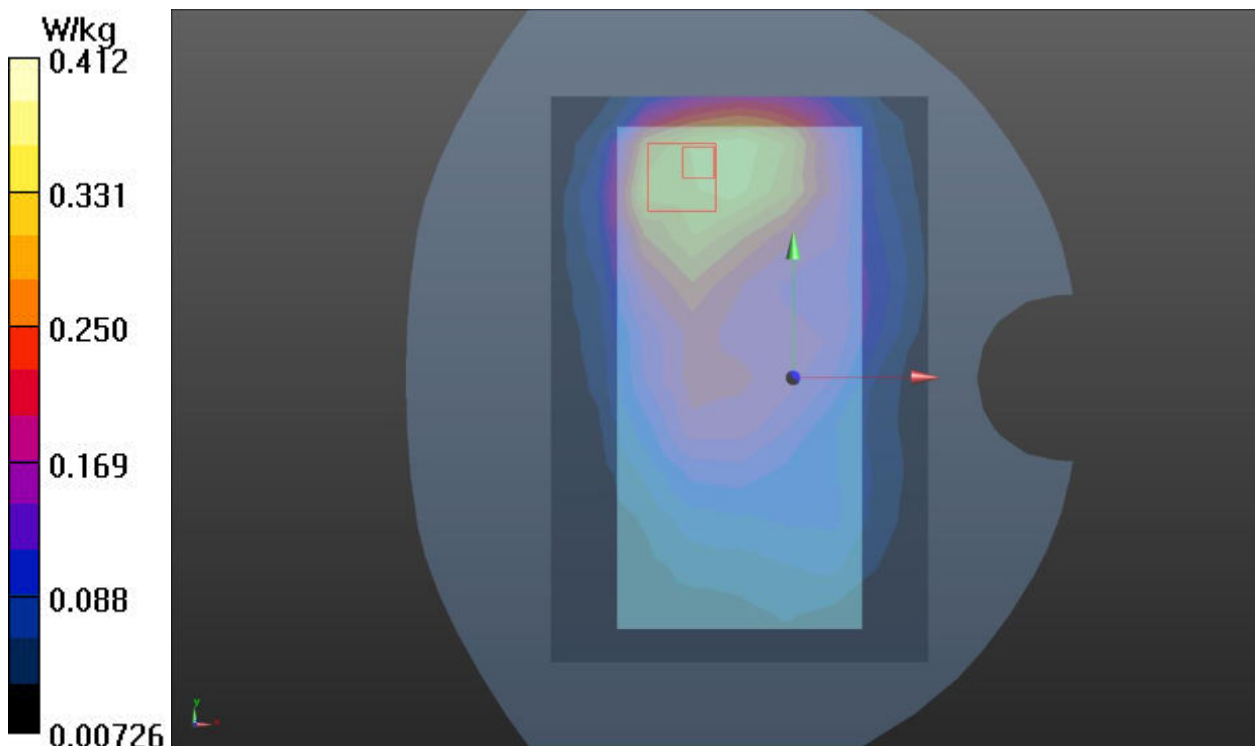
Peak SAR (extrapolated) = 0.571 W/kg

SAR(1 g) = 0.398 W/kg; SAR(10 g) = 0.252 W/kg

Smallest distance from peaks to all points 3 dB below = 24.9 mm

Ratio of SAR at M2 to SAR at M1 = 62.8%

Maximum value of SAR (measured) = 0.412 W/kg



Plot 67 n77 50%RB Back Side 10mm High

Date: 2025/3/27

Communication System: UID 0, 5G NR (0); Frequency: 3930 MHz;Duty Cycle: 1:1

Medium parameters used (interpolated): $f = 3930$ MHz; $\sigma = 3.177$ S/m; $\epsilon_r = 38.786$; $\rho = 1000$ kg/m³

Ambient Temperature:22.3 °C Liquid Temperature: 21.5°C

Phantom section: Flat Section

DASY5 Configuration:

Sensor-Surface: 1.4mm (Mechanical Surface Detection)

Probe: EX3DV4 - SN7689; ConvF(6.51, 6.84, 6.95); Calibrated: 2024/6/4

Electronics: DAE4 Sn1317; Calibrated: 2024/9/10

Phantom: SAM 2; Type: QD000P40CD; Serial: TP:1666

Measurement SW: DASY52, Version 52.10 (4); SEMCAD X Version 14.6.14 (7483)

n77 50%RB Back Side 10mm/High/Area Scan (12x22x1): Measurement grid: dx=10mm, dy=10mm

Maximum value of SAR (measured) = 0.608 W/kg

n77 50%RB Back Side 10mm/High/Zoom Scan (7x7x12)/Cube 0: Measurement grid: dx=4mm,

dy=4mm, dz=2mm

Reference Value = 3.639 V/m; Power Drift = 0.020 dB

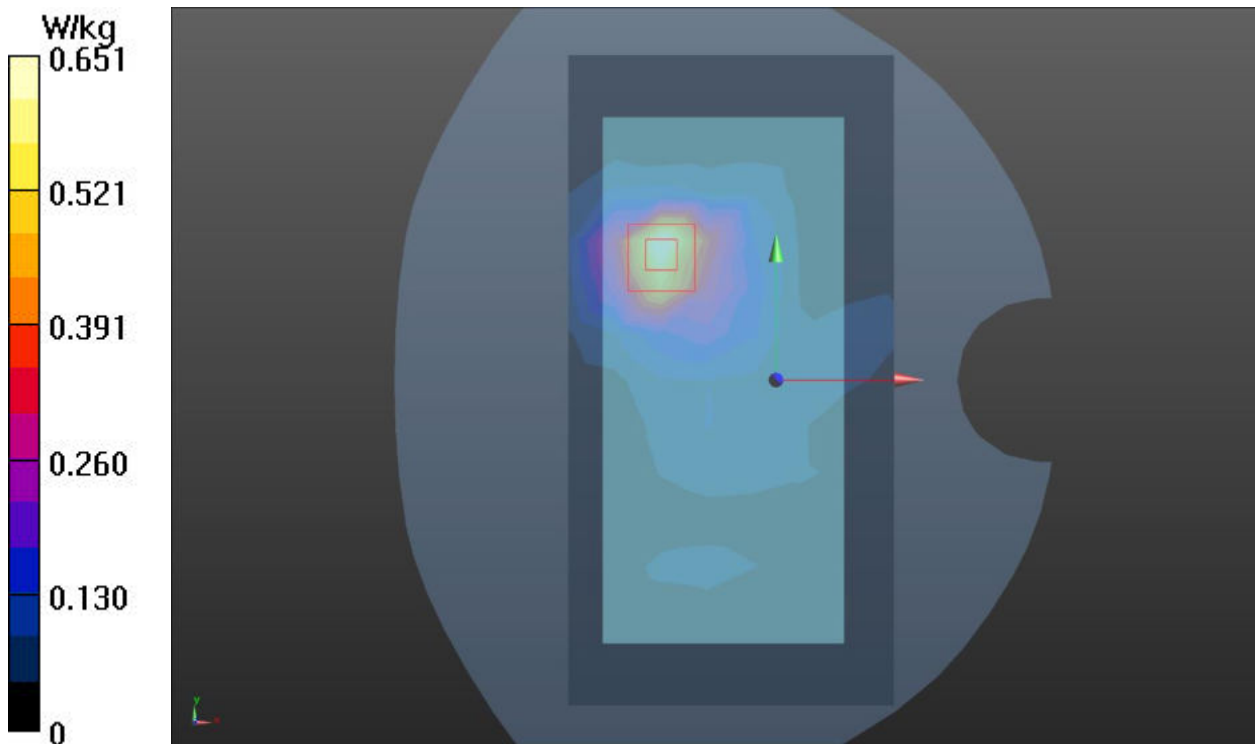
Peak SAR (extrapolated) = 1.28 W/kg

SAR(1 g) = 0.572 W/kg; SAR(10 g) = 0.221 W/kg

Smallest distance from peaks to all points 3 dB below = 12.8 mm

Ratio of SAR at M2 to SAR at M1 = 37.2%

Maximum value of SAR (measured) = 0.651 W/kg



Plot 68 802.11b Back Side 10mm High

Date: 2025/3/29

Communication System: UID 0, 802.11b (0); Frequency: 2462 MHz;Duty Cycle: 1:1

Medium parameters used (interpolated): $f = 2462$ MHz; $\sigma = 1.852$ S/m; $\epsilon_r = 38.434$; $\rho = 1000$ kg/m³

Ambient Temperature:22.3 °C Liquid Temperature: 21.5°C

Phantom section: Flat Section

DASY5 Configuration:

Sensor-Surface: 1.4mm (Mechanical Surface Detection)

Probe: EX3DV4 - SN7689; ConvF(7.62, 8.01, 8.14); Calibrated: 2024/6/4

Electronics: DAE4 Sn1317; Calibrated: 2024/9/10

Phantom: SAM 2; Type: QD000P40CD; Serial: TP:1666

Measurement SW: DASY52, Version 52.10 (4); SEMCAD X Version 14.6.14 (7483)

802.11b Back Side 10mm/High/Area Scan (10x19x1): Measurement grid: dx=12mm, dy=12mm

Maximum value of SAR (measured) = 0.062 W/kg

802.11b Back Side 10mm/High/Zoom Scan (7x7x7)/Cube 0: Measurement grid: dx=5mm,

dy=5mm, dz=5mm

Reference Value = 2.144 V/m; Power Drift = 0.097 dB

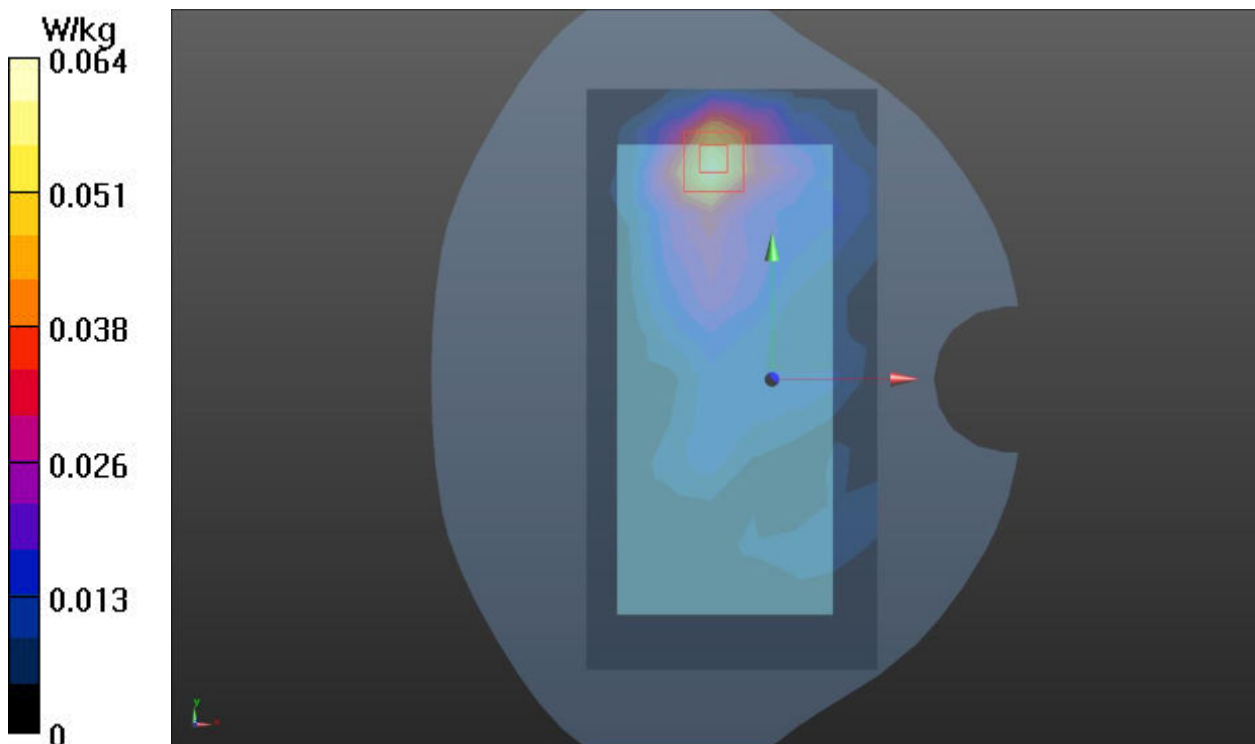
Peak SAR (extrapolated) = 0.123 W/kg

SAR(1 g) = 0.059 W/kg; SAR(10 g) = 0.032 W/kg

Smallest distance from peaks to all points 3 dB below = 9.5 mm

Ratio of SAR at M2 to SAR at M1 = 45.4%

Maximum value of SAR (measured) = 0.064 W/kg



Plot 69 802.11a Back Side 10mm Mid

Date: 2025/3/28

Communication System: UID 0, 802.11a (0); Frequency: 5300 MHz;Duty Cycle: 1:1

Medium parameters used (interpolated): $f = 5300$ MHz; $\sigma = 4.819$ S/m; $\epsilon_r = 35.285$; $\rho = 1000$ kg/m³

Ambient Temperature:22.3 °C Liquid Temperature: 21.5°C

Phantom section: Flat Section

DASY5 Configuration:

Sensor-Surface: 1.4mm (Mechanical Surface Detection)

Probe: EX3DV4 - SN7689; ConvF(5.87, 6.17, 6.27); Calibrated: 2024/6/4

Electronics: DAE4 Sn1317; Calibrated: 2024/9/10

Phantom: SAM 2; Type: QD000P40CD; Serial: TP:1666

Measurement SW: DASY52, Version 52.10 (4); SEMCAD X Version 14.6.14 (7483)

802.11a Back Side 10mm/Mid/Area Scan (12x22x1): Measurement grid: dx=10mm, dy=10mm

Maximum value of SAR (measured) = 0.240 W/kg

802.11a Back Side 10mm/Mid/Zoom Scan (7x7x12)/Cube 0: Measurement grid: dx=4mm,

dy=4mm, dz=2mm

Reference Value = 0.8570 V/m; Power Drift = 0.036 dB

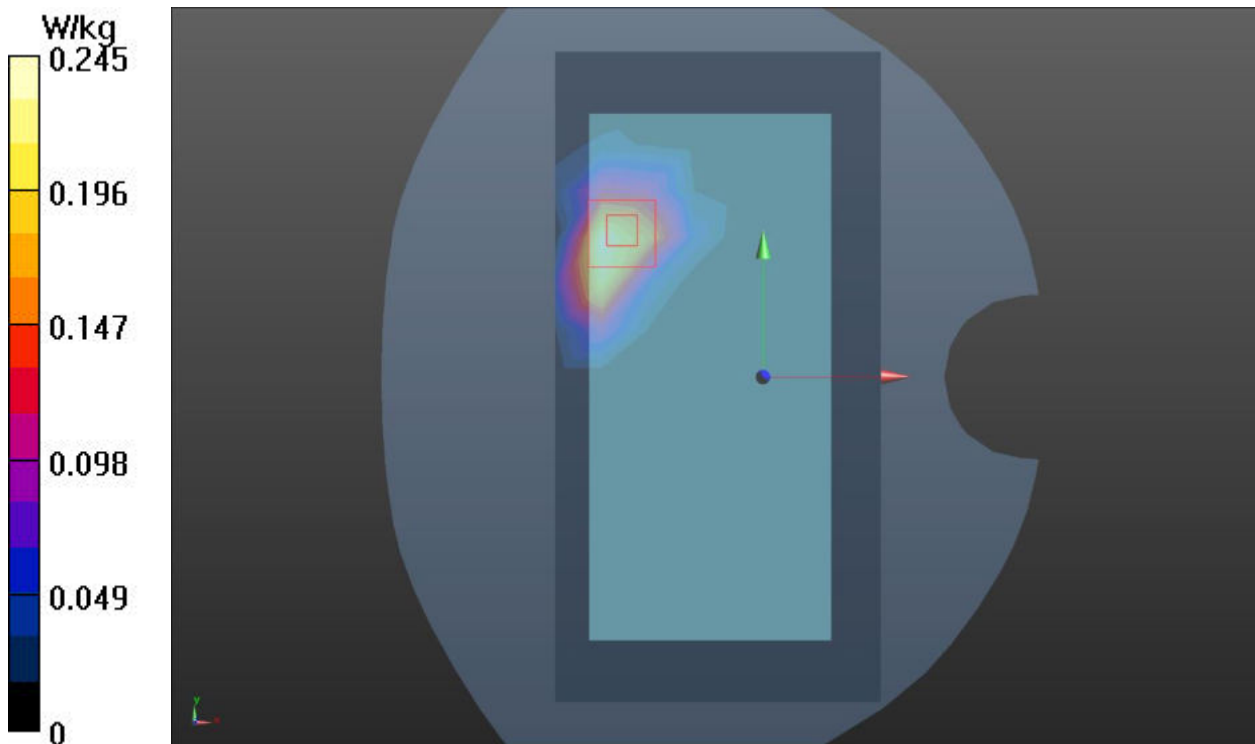
Peak SAR (extrapolated) = 0.569 W/kg

SAR(1 g) = 0.205 W/kg; SAR(10 g) = 0.075 W/kg

Smallest distance from peaks to all points 3 dB below = 11.8 mm

Ratio of SAR at M2 to SAR at M1 = 41.4%

Maximum value of SAR (measured) = 0.245 W/kg



Plot 70 BT DH5 Right Edge 10mm Mid

Date: 2025/3/29

Communication System: UID 0, BT (0); Frequency: 2441 MHz; Duty Cycle: 1:1.30

Medium parameters used (interpolated): $f = 2441$ MHz; $\sigma = 1.828$ S/m; $\epsilon_r = 38.503$; $\rho = 1000$ kg/m³

Ambient Temperature: 22.3 °C Liquid Temperature: 21.5 °C

Phantom section: Flat Section

DASY5 Configuration:

Sensor-Surface: 1.4mm (Mechanical Surface Detection)

Probe: EX3DV4 - SN7689; ConvF(7.62, 8.01, 8.14); Calibrated: 2024/6/4

Electronics: DAE4 Sn1317; Calibrated: 2024/9/10

Phantom: SAM 2; Type: QD000P40CD; Serial: TP:1666

Measurement SW: DASY52, Version 52.10 (4); SEMCAD X Version 14.6.14 (7483)

BT DH5 Right Edge 10mm/Mid/Area Scan (5x19x1): Measurement grid: dx=12mm, dy=12mm

Maximum value of SAR (measured) = 0.021 W/kg

BT DH5 Right Edge 10mm/Mid/Zoom Scan (7x7x7)/Cube 0: Measurement grid: dx=5mm, dy=5mm,

dz=5mm

Reference Value = 1.057 V/m; Power Drift = 0.046 dB

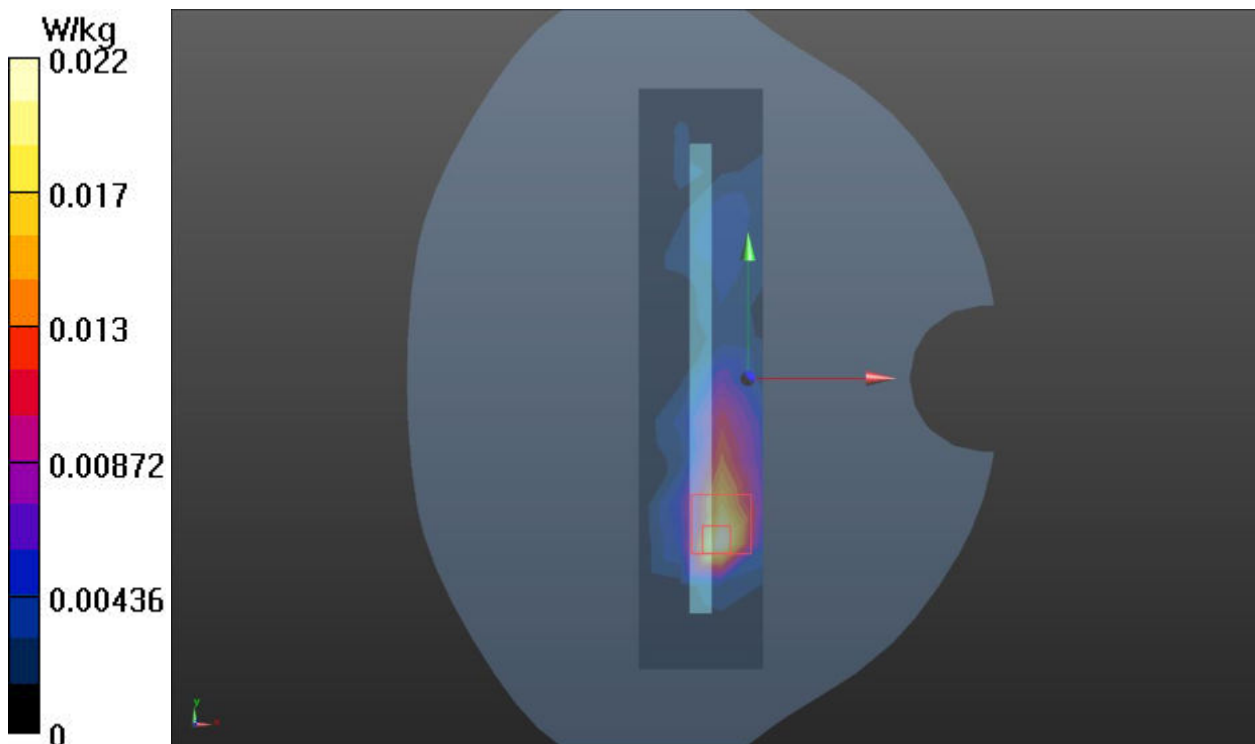
Peak SAR (extrapolated) = 0.050 W/kg

SAR(1 g) = 0.020 W/kg; SAR(10 g) = 0.009 W/kg

Smallest distance from peaks to all points 3 dB below = 10.1 mm

Ratio of SAR at M2 to SAR at M1 = 42.6%

Maximum value of SAR (measured) = 0.022 W/kg



Plot 71 LTE B7 1RB Back Side 0mm Low

Date: 2025/3/14

Communication System: UID 0, LTE (0); Frequency: 2510 MHz; Duty Cycle: 1:1

Medium parameters used: $f = 2510$ MHz; $\sigma = 1.906$ S/m; $\epsilon_r = 38.249$; $\rho = 1000$ kg/m³

Ambient Temperature: 22.3 °C Liquid Temperature: 21.5 °C

Phantom section: Flat Section

DASY5 Configuration:

Sensor-Surface: 1.4mm (Mechanical Surface Detection)

Probe: EX3DV4 - SN7689; ConvF(7.39, 7.77, 7.89); Calibrated: 2024/6/4

Electronics: DAE4 Sn1317; Calibrated: 2024/9/10

Phantom: SAM 2; Type: QD000P40CD; Serial: TP:1666

Measurement SW: DASY52, Version 52.10 (4); SEMCAD X Version 14.6.14 (7483)

LTE B7 1RB Back Side 0mm/Low/Area Scan (10x19x1): Measurement grid: dx=12mm, dy=12mm
Maximum value of SAR (measured) = 6.37 W/kg

LTE B7 1RB Back Side 0mm/Low/Zoom Scan (7x7x7)/Cube 0: Measurement grid: dx=5mm, dy=5mm, dz=5mm

Reference Value = 17.46 V/m; Power Drift = -0.038 dB

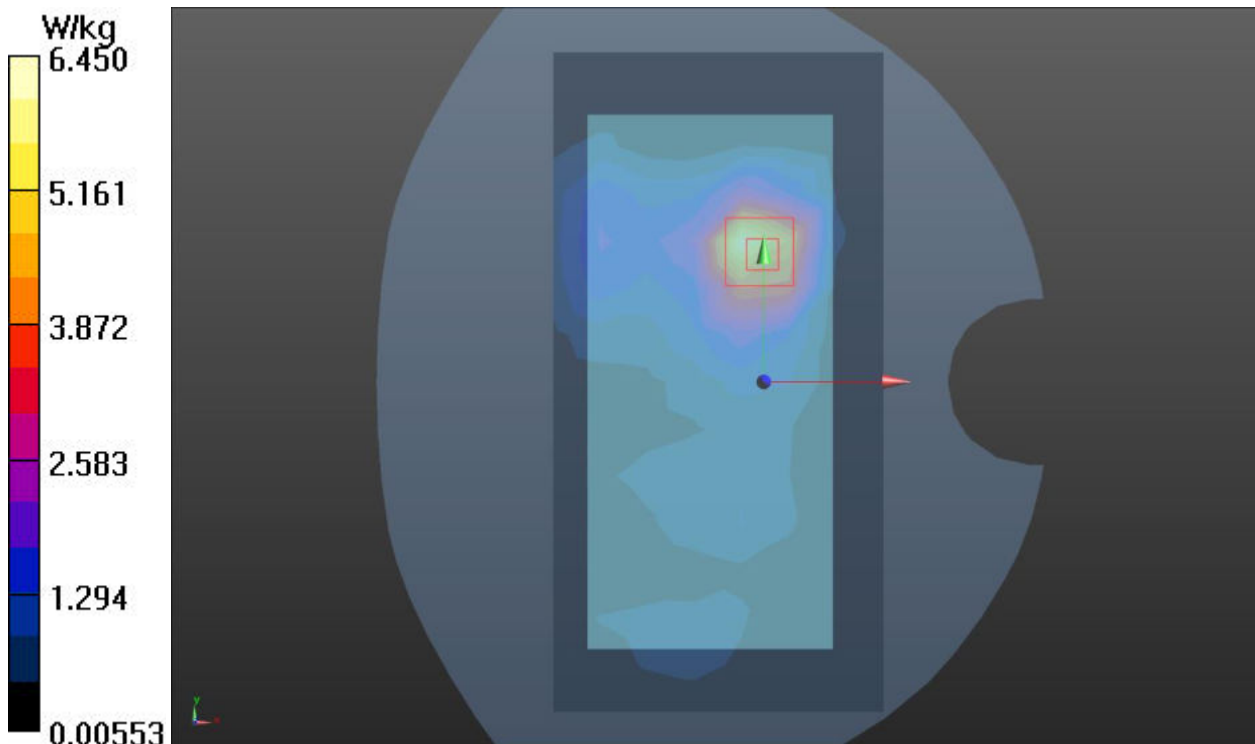
Peak SAR (extrapolated) = 12.83 W/kg

SAR(1 g) = 5.68 W/kg; SAR(10 g) = 2.29 W/kg

Smallest distance from peaks to all points 3 dB below = 11.6 mm

Ratio of SAR at M2 to SAR at M1 = 48.7%

Maximum value of SAR (measured) = 6.45 W/kg



ANNEX D: Probe Calibration Certificate (SN: 7689)

Calibration Laboratory of
 Schmid & Partner
 Engineering AG
 Zeughausstrasse 43, 8004 Zurich, Switzerland



S Schweizerischer Kalibrierdienst
C Service suisse d'étalonnage
S Servizio svizzero di taratura
S Swiss Calibration Service

Accredited by the Swiss Accreditation Service (SAS)
 The Swiss Accreditation Service is one of the signatories to the EA
 Multilateral Agreement for the recognition of calibration certificates

Accreditation No.: **SCS 0108**

Client **TA**
 Shanghai

Certificate No. **EX-7689_Jun24**

CALIBRATION CERTIFICATE

Object **EX3DV4 - SN:7689**

Calibration procedure(s) **QA CAL-01.v10, QA CAL-12.v10, QA CAL-14.v7, QA CAL-23.v6, QA CAL-25.v8**
 Calibration procedure for dosimetric E-field probes

Calibration date **June 04, 2024**


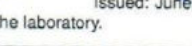
This calibration certificate documents the traceability to national standards, which realize the physical units of measurements (SI). The measurements and the uncertainties with confidence probability are given on the following pages and are part of the certificate.

All calibrations have been conducted in the closed laboratory facility: environment temperature (22 ± 3) °C and humidity < 70%.

Calibration Equipment used (M&TE critical for calibration)

Primary Standards	ID	Cal Date (Certificate No.)	Scheduled Calibration
Power meter NRP2	SN: 104778	26-Mar-24 (No. 217-04036/04037)	Mar-25
Power sensor NRP-Z91	SN: 103244	26-Mar-24 (No. 217-04036)	Mar-25
OCP DAK-3.5 (weighted)	SN: 1249	05-Oct-23 (OCP-DAK3.5-1249_Oct23)	Oct-24
OCP DAK-12	SN: 1016	05-Oct-23 (OCP-DAK12-1016_Oct23)	Oct-24
Reference 20 dB Attenuator	SN: CC2552 (20x)	26-Mar-24 (No. 217-04046)	Mar-25
DAE4	SN: 660	23-Feb-24 (No. DAE4-660_Feb24)	Feb-25
Reference Probe EX3DV4	SN: 7349	03-Nov-23 (No. EX3-7349_Nov23)	Nov-24

Secondary Standards	ID	Check Date (in house)	Scheduled Check
Power meter E4419B	SN: GB41293874	06-Apr-16 (in house check Jun-22)	In house check: Jun-24
Power sensor E4412A	SN: MY41498087	06-Apr-16 (in house check Jun-22)	In house check: Jun-24
Power sensor E4412A	SN: 000110210	06-Apr-16 (in house check Jun-22)	In house check: Jun-24
RF generator HP 8648C	SN: US3642U01700	04-Aug-99 (in house check Jun-22)	In house check: Jun-24
Network Analyzer E8358A	SN: US41080477	31-Mar-14 (in house check Oct-22)	In house check: Oct-24

	Name	Function	Signature
Calibrated by	Joanna Lieshaj	Laboratory Technician	
Approved by	Sven Kühn	Technical Manager	

Issued: June 4, 2024

This calibration certificate shall not be reproduced except in full without written approval of the laboratory.

**Calibration Laboratory of
Schmid & Partner
Engineering AG**

Zeughausstrasse 43, 8004 Zurich, Switzerland



S Schweizerischer Kalibrierdienst
C Service suisse d'étalonnage
S Servizio svizzero di taratura
S Swiss Calibration Service

Accredited by the Swiss Accreditation Service (SAS)
The Swiss Accreditation Service is one of the signatories to the EA
Multilateral Agreement for the recognition of calibration certificates

Accreditation No.: **SCS 0108**

Glossary

TSL	tissue simulating liquid
NORM _{x,y,z}	sensitivity in free space
ConvF	sensitivity in TSL / NORM _{x,y,z}
DCP	diode compression point
CF	crest factor (1/duty_cycle) of the RF signal
A, B, C, D	modulation dependent linearization parameters
Polarization φ	φ rotation around probe axis
Polarization θ	θ rotation around an axis that is in the plane normal to probe axis (at measurement center), i.e., $\theta = 0$ is normal to probe axis
Connector Angle	information used in DASY system to align probe sensor X to the robot coordinate system

Calibration is Performed According to the Following Standards:

- a) IEC/IEEE 62209-1528, "Measurement Procedure For The Assessment Of Specific Absorption Rate Of Human Exposure To Radio Frequency Fields From Hand-Held And Body-Worn Wireless Communication Devices – Part 1528: Human Models, Instrumentation And Procedures (Frequency Range of 4 MHz to 10 GHz)", October 2020.
- b) KDB 865664, "SAR Measurement Requirements for 100 MHz to 6 GHz"

Methods Applied and Interpretation of Parameters:

- **NORM_{x,y,z}**: Assessed for E-field polarization $\theta = 0$ ($f \leq 900$ MHz in TEM-cell; $f > 1800$ MHz: R22 waveguide). NORM_{x,y,z} are only intermediate values, i.e., the uncertainties of NORM_{x,y,z} does not affect the E²-field uncertainty inside TSL (see below ConvF).
- **NORM(f)_{x,y,z} = NORM_{x,y,z} * frequency_response** (see Frequency Response Chart). This linearization is implemented in DASY4 software versions later than 4.2. The uncertainty of the frequency response is included in the stated uncertainty of ConvF.
- **DCP_{x,y,z}**: DCP are numerical linearization parameters assessed based on the data of power sweep with CW signal. DCP does not depend on frequency nor media.
- **PAR**: PAR is the Peak to Average Ratio that is not calibrated but determined based on the signal characteristics
- **A_{x,y,z}; B_{x,y,z}; C_{x,y,z}; D_{x,y,z}; VR_{x,y,z}**: A, B, C, D are numerical linearization parameters assessed based on the data of power sweep for specific modulation signal. The parameters do not depend on frequency nor media. VR is the maximum calibration range expressed in RMS voltage across the diode.
- **ConvF and Boundary Effect Parameters**: Assessed in flat phantom using E-field (or Temperature Transfer Standard for $f \leq 800$ MHz) and inside waveguide using analytical field distributions based on power measurements for $f > 800$ MHz. The same setups are used for assessment of the parameters applied for boundary compensation (alpha, depth) of which typical uncertainty values are given. These parameters are used in DASY4 software to improve probe accuracy close to the boundary. The sensitivity in TSL corresponds to NORM_{x,y,z} * ConvF whereby the uncertainty corresponds to that given for ConvF. A frequency dependent ConvF is used in DASY version 4.4 and higher which allows extending the validity from ± 50 MHz to ± 100 MHz.
- **Spherical isotropy (3D deviation from isotropy)**: in a field of low gradients realized using a flat phantom exposed by a patch antenna.
- **Sensor Offset**: The sensor offset corresponds to the offset of virtual measurement center from the probe tip (on probe axis). No tolerance required.
- **Connector Angle**: The angle is assessed using the information gained by determining the NORM_x (no uncertainty required).

EX3DV4 - SN:7689

June 04, 2024

Parameters of Probe: EX3DV4 - SN:7689

Basic Calibration Parameters

	Sensor X	Sensor Y	Sensor Z	Unc (k = 2)
Norm ($\mu\text{V}/(\text{V}/\text{m})^2$) ^A	0.56	0.61	0.60	±10.1%
DCP (mV) ^B	102.7	103.5	104.8	±4.7%

Calibration Results for Modulation Response

UID	Communication System Name		A dB	B dB $\sqrt{\mu\text{V}}$	C	D dB	VR mV	Max dev.	Max Unc ^E k = 2
0	CW	X	0.00	0.00	1.00	0.00	123.5	±1.1%	±4.7%
		Y	0.00	0.00	1.00		119.7		
		Z	0.00	0.00	1.00		140.9		
10352	Pulse Waveform (200Hz, 10%)	X	1.60	61.02	6.64	10.00	60.0	±2.5%	±9.6%
		Y	1.42	60.16	6.02		60.0		
		Z	1.73	61.65	6.95		60.0		
10353	Pulse Waveform (200Hz, 20%)	X	0.79	60.00	4.97	6.99	80.0	±2.2%	±9.6%
		Y	0.82	60.00	4.79		80.0		
		Z	10.00	72.00	9.00		80.0		
10354	Pulse Waveform (200Hz, 40%)	X	0.32	149.82	0.95	3.98	95.0	±2.8%	±9.6%
		Y	20.00	72.00	7.00		95.0		
		Z	0.20	139.27	0.20		95.0		
10355	Pulse Waveform (200Hz, 60%)	X	0.29	60.00	2.80	2.22	120.0	±1.7%	±9.6%
		Y	8.70	158.89	15.99		120.0		
		Z	9.34	158.65	18.11		120.0		
10387	QPSK Waveform, 1 MHz	X	0.72	66.25	13.93	1.00	150.0	±3.8%	±9.6%
		Y	0.59	64.27	12.38		150.0		
		Z	0.79	67.02	14.20		150.0		
10388	QPSK Waveform, 10 MHz	X	1.50	66.93	14.73	0.00	150.0	±1.3%	±9.6%
		Y	1.37	65.88	13.93		150.0		
		Z	1.55	67.15	14.85		150.0		
10396	64-QAM Waveform, 100 kHz	X	1.72	64.78	16.18	3.01	150.0	±0.9%	±9.6%
		Y	1.71	64.79	15.98		150.0		
		Z	1.75	65.00	16.24		150.0		
10399	64-QAM Waveform, 40 MHz	X	2.95	66.69	15.41	0.00	150.0	±1.6%	±9.6%
		Y	2.86	66.30	15.09		150.0		
		Z	2.87	66.14	15.14		150.0		
10414	WLAN CCDF, 64-QAM, 40 MHz	X	3.96	66.18	15.49	0.00	150.0	±3.0%	±9.6%
		Y	3.86	65.92	15.26		150.0		
		Z	4.05	66.38	15.59		150.0		

Note: For details on UID parameters see Appendix

The reported uncertainty of measurement is stated as the standard uncertainty of measurement multiplied by the coverage factor k=2, which for a normal distribution corresponds to a coverage probability of approximately 95%.

^A The uncertainties of Norm X,Y,Z do not affect the E²-field uncertainty inside TSL (see Pages 5 and 6).

^B Linearization parameter uncertainty for maximum specified field strength.

^E Uncertainty is determined using the max. deviation from linear response applying rectangular distribution and is expressed for the square of the field value.

EX3DV4 - SN:7689

June 04, 2024

Parameters of Probe: EX3DV4 - SN:7689

Sensor Model Parameters

	C1 fF	C2 fF	α V ⁻¹	T1 msV ⁻²	T2 msV ⁻¹	T3 ms	T4 V ⁻²	T5 V ⁻¹	T6
x	10.8	78.12	33.65	2.19	0.00	4.90	0.42	0.00	1.00
y	10.5	76.45	33.69	3.63	0.00	4.91	0.50	0.00	1.00
z	11.2	81.08	33.46	3.12	0.00	4.90	0.41	0.00	1.00

Other Probe Parameters

Sensor Arrangement	Triangular
Connector Angle	-2.4°
Mechanical Surface Detection Mode	enabled
Optical Surface Detection Mode	disabled
Probe Overall Length	337 mm
Probe Body Diameter	10 mm
Tip Length	9 mm
Tip Diameter	2.5 mm
Probe Tip to Sensor X Calibration Point	1 mm
Probe Tip to Sensor Y Calibration Point	1 mm
Probe Tip to Sensor Z Calibration Point	1 mm
Recommended Measurement Distance from Surface	1.4 mm

Note: Measurement distance from surface can be increased to 3–4 mm for an Area Scan job.

EX3DV4 - SN:7689

June 04, 2024

Parameters of Probe: EX3DV4 - SN:7689

Calibration Parameter Determined in Head Tissue Simulating Media

f (MHz) ^C	Relative Permittivity ^F	Conductivity ^F (S/m)	ConvF X	ConvF Y	ConvF Z	Alpha ^G	Depth ^G (mm)	Unc ^H (k = 2)
13	55.0	0.75	14.55	15.41	17.14	0.00	1.25	±13.3%
750	41.9	0.89	9.58	10.07	10.24	0.34	1.27	±11.0%
835	41.5	0.90	9.44	9.92	10.09	0.34	1.27	±11.0%
1750	40.1	1.37	8.01	8.42	8.56	0.35	1.27	±11.0%
1900	40.0	1.40	7.88	8.28	8.42	0.35	1.27	±11.0%
2000	40.0	1.40	7.78	8.18	8.32	0.35	1.27	±11.0%
2300	39.5	1.67	7.65	8.04	8.17	0.35	1.27	±11.0%
2450	39.2	1.80	7.62	8.01	8.14	0.35	1.27	±11.0%
2600	39.0	1.96	7.39	7.77	7.89	0.35	1.27	±11.0%
3300	38.2	2.71	6.80	7.15	7.27	0.36	1.27	±13.1%
3500	37.9	2.91	6.76	7.11	7.22	0.36	1.27	±13.1%
3700	37.7	3.12	6.71	7.05	7.17	0.36	1.27	±13.1%
3900	37.5	3.32	6.51	6.84	6.95	0.37	1.27	±13.1%
4100	37.2	3.53	6.39	6.72	6.83	0.37	1.27	±13.1%
4400	36.9	3.84	6.31	6.63	6.74	0.37	1.27	±13.1%
4600	36.7	4.04	6.28	6.59	6.70	0.37	1.27	±13.1%
4800	36.4	4.25	6.21	6.53	6.64	0.37	1.27	±13.1%
4950	36.3	4.40	6.11	6.42	6.53	0.36	1.27	±13.1%
5250	35.9	4.71	5.87	6.17	6.27	0.33	1.27	±13.1%
5600	35.5	5.07	5.33	5.60	5.70	0.29	1.27	±13.1%
5750	35.4	5.22	5.31	5.59	5.68	0.28	1.27	±13.1%

^C Frequency validity above 300 MHz of ±100 MHz only applies for DASY v4.4 and higher (see Page 2), else it is restricted to ±50 MHz. The uncertainty is the RSS of the ConvF uncertainty at calibration frequency and the uncertainty for the indicated frequency band. Frequency validity below 300 MHz is ±10, 25, 40, 50 and 70 MHz for ConvF assessments at 30, 64, 128, 150 and 220 MHz respectively. Validity of ConvF assessed at 6 MHz is 4–9 MHz, and ConvF assessed at 13 MHz is 9–19 MHz. Above 5 GHz frequency validity can be extended to ±110 MHz.

^F The probes are calibrated using tissue simulating liquids (TSL) that deviate for ϵ and σ by less than ±5% from the target values (typically better than ±3%) and are valid for TSL with deviations of up to ±10% if SAR correction is applied.

^G Alpha/Depth are determined during calibration. SPEAG warrants that the remaining deviation due to the boundary effect after compensation is always less than ±1% for frequencies below 3 GHz and below ±2% for frequencies between 3–6 GHz at any distance larger than half the probe tip diameter from the boundary.

^H The stated uncertainty is the total calibration uncertainty (k = 2) of Norm-ConvF. Therefore, The uncertainty stated is equivalent to the uncertainty component with the symbol CF in Table 9 of IEC/IEEE 62209-1528:2020.

EX3DV4 - SN:7689

June 04, 2024

Parameters of Probe: EX3DV4 - SN:7689

Calibration Parameter Determined in Head Tissue Simulating Media

f (MHz) ^C	Relative Permittivity ^F	Conductivity ^F (S/m)	ConvF X	ConvF Y	ConvF Z	Alpha ^G	Depth ^G (mm)	Unc ^H (k = 2)
6500	34.5	6.07	6.03	6.33	6.44	0.20	1.27	±18.6%

^C Frequency validity at 6.5 GHz is -600/+700 MHz, and ±700 MHz at or above 7 GHz. The uncertainty is the RSS of the ConvF uncertainty at calibration frequency and the uncertainty for the indicated frequency band.

^F The probes are calibrated using tissue simulating liquids (TSL) that deviate for ϵ and σ by less than ±10% from the target values (typically better than ±6%) and are valid for TSL with deviations of up to ±10%.

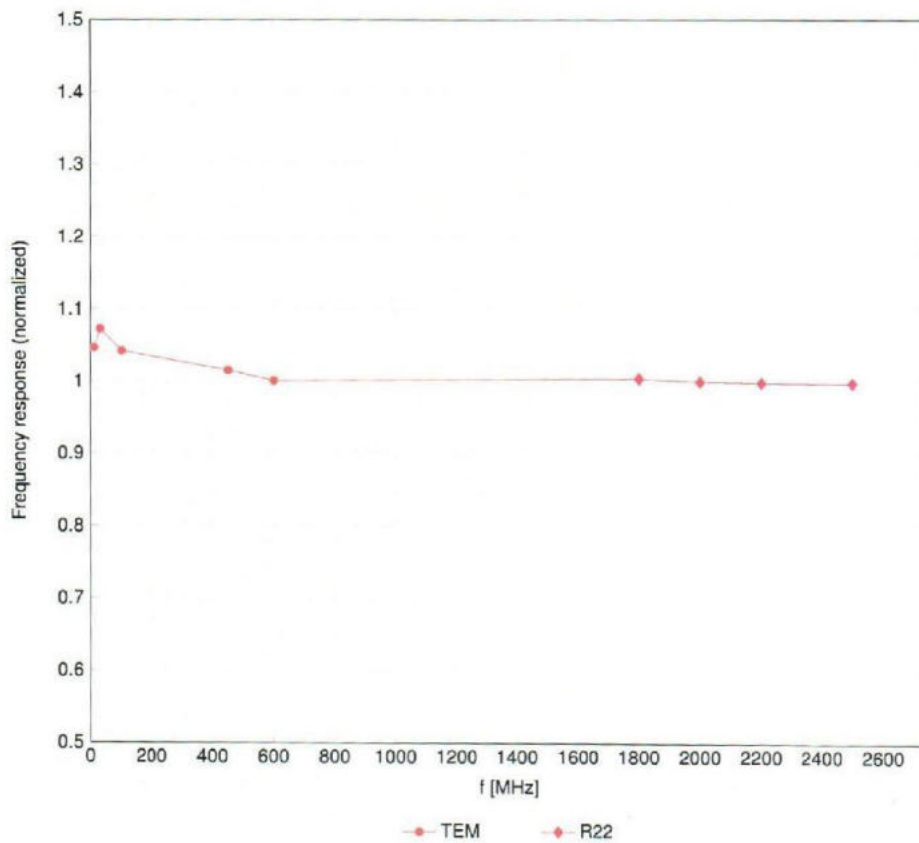
^G Alpha/Depth are determined during calibration. SPEAG warrants that the remaining deviation due to the boundary effect after compensation is always less than ±1% for frequencies below 3 GHz; below ±2% for frequencies between 3–6 GHz; and below ±4% for frequencies between 6–10 GHz at any distance larger than half the probe tip diameter from the boundary.

^H The stated uncertainty is the total calibration uncertainty (k = 2) of Norm ConvF. Therefore, The uncertainty stated is equivalent to the uncertainty component with the symbol CF in Table 9 of IEC/IEEE 62209-1528:2020.

EX3DV4 - SN:7689

June 04, 2024

Frequency Response of E-Field (TEM-Cell:ifi110 EXX, Waveguide:R22)

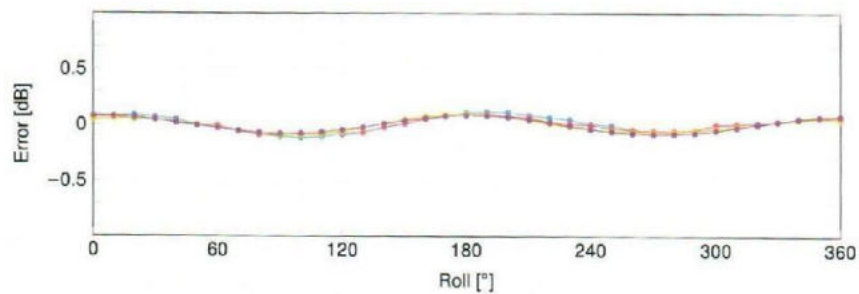
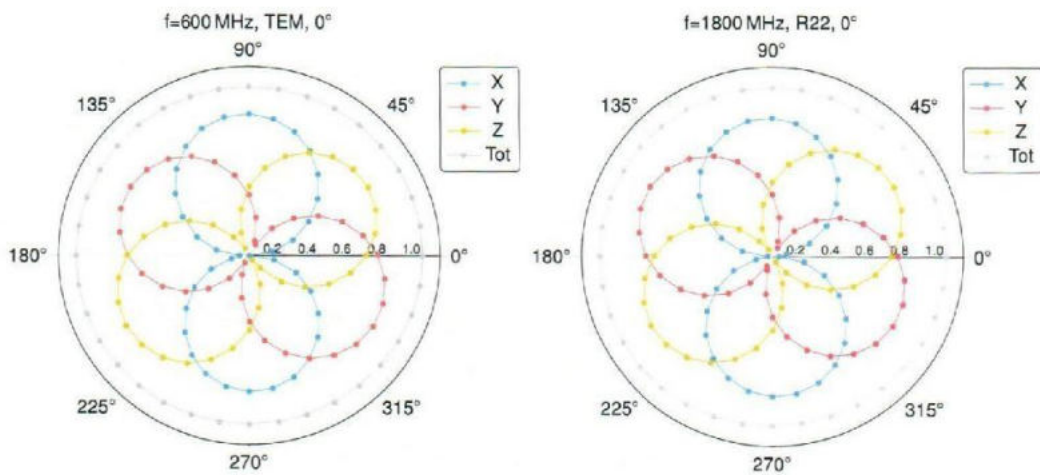


Uncertainty of Frequency Response of E-field: $\pm 6.3\%$ (k=2)

EX3DV4 - SN:7689

June 04, 2024

Receiving Pattern (ϕ), $\theta = 0^\circ$



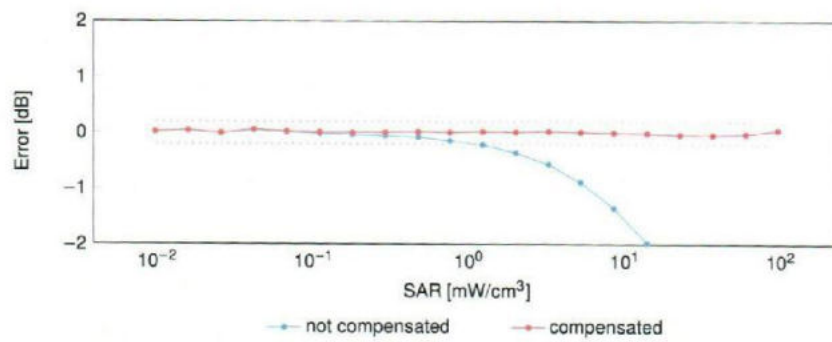
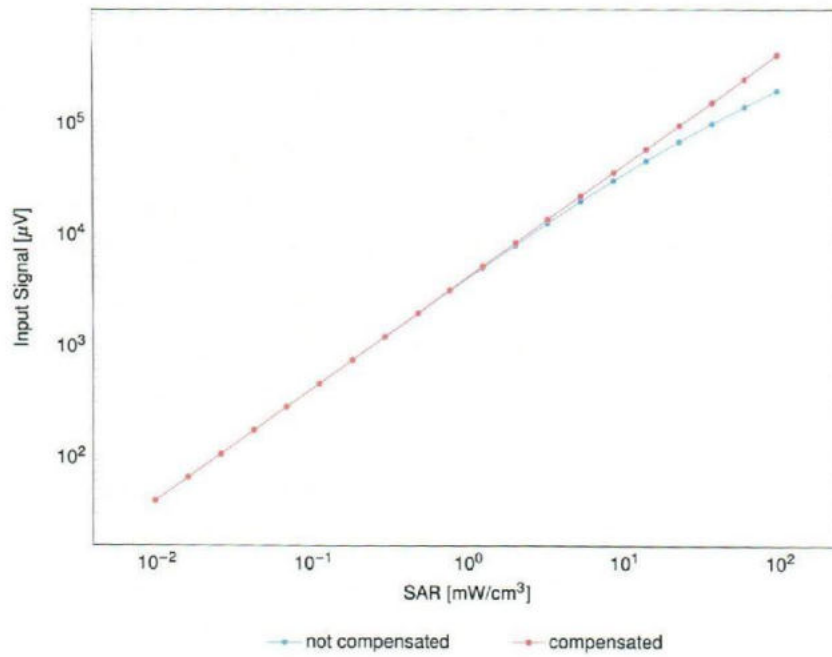
Uncertainty of Axial Isotropy Assessment: $\pm 0.5\%$ (k=2)

EX3DV4 - SN:7689

June 04, 2024

Dynamic Range f(SAR_{head})

(TEM cell, f_{eval} = 1900MHz)

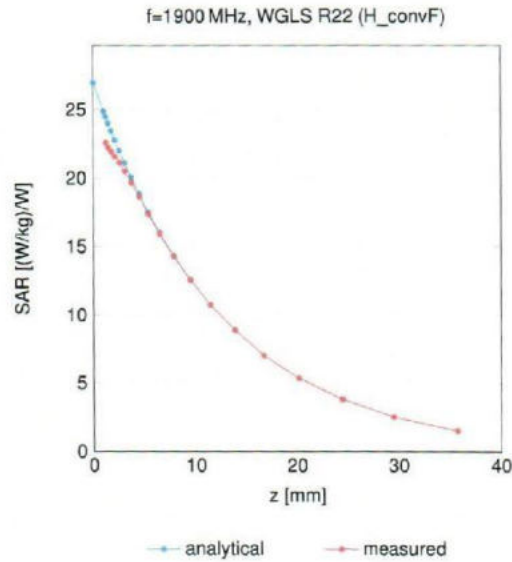


Uncertainty of Linearity Assessment: ±0.6% (k=2)

EX3DV4 - SN:7689

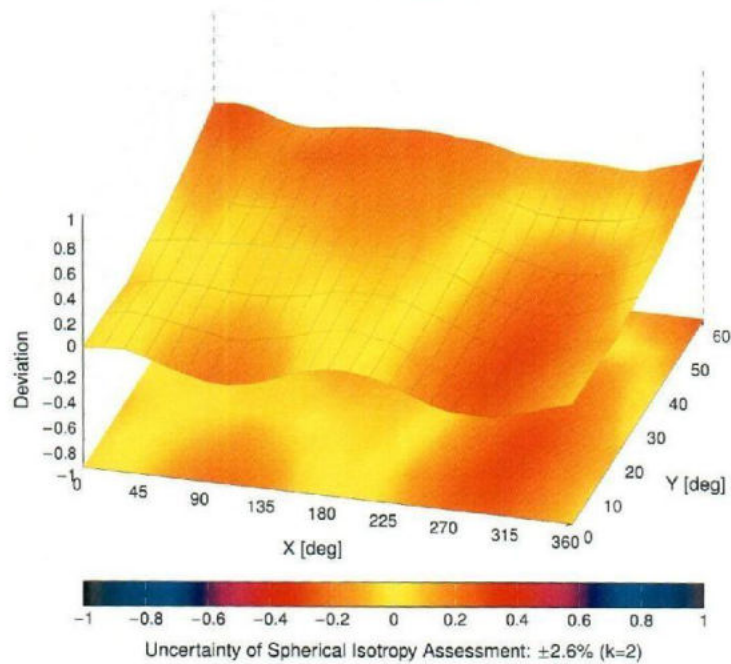
June 04, 2024

Conversion Factor Assessment



Deviation from Isotropy in Liquid

Error (ϕ, θ), f = 900 MHz



EX3DV4 - SN:7689

June 04, 2024

Appendix: Modulation Calibration Parameters

UID	Rev	Communication System Name	Group	PAR (dB)	Unc ^E k = 2
0		CW	CW	0.00	±4.7
10010	CAB	SAR Validation (Square, 100 ms, 10 ms)	Test	10.00	±9.6
10011	CAC	UMTS-FDD (WCDMA)	WCDMA	2.91	±9.6
10012	CAB	IEEE 802.11b WiFi 2.4 GHz (DSSS, 1 Mbps)	WLAN	1.87	±9.6
10013	CAB	IEEE 802.11g WiFi 2.4 GHz (DSSS-OFDM, 6 Mbps)	WLAN	9.46	±9.6
10021	DAC	GSM-FDD (TDMA, GMSK)	GSM	9.39	±9.6
10023	DAC	GPRS-FDD (TDMA, GMSK, TN 0)	GSM	9.57	±9.6
10024	DAC	GPRS-FDD (TDMA, GMSK, TN 0-1)	GSM	6.56	±9.6
10025	DAC	EDGE-FDD (TDMA, 8PSK, TN 0)	GSM	12.62	±9.6
10026	DAC	EDGE-FDD (TDMA, 8PSK, TN 0-1)	GSM	9.55	±9.6
10027	DAC	GPRS-FDD (TDMA, GMSK, TN 0-1-2)	GSM	4.80	±9.6
10028	DAC	GPRS-FDD (TDMA, GMSK, TN 0-1-2-3)	GSM	3.55	±9.6
10029	DAC	EDGE-FDD (TDMA, 8PSK, TN 0-1-2)	GSM	7.78	±9.6
10030	CAA	IEEE 802.15.1 Bluetooth (GFSK, DH1)	Bluetooth	5.30	±9.6
10031	CAA	IEEE 802.15.1 Bluetooth (GFSK, DH3)	Bluetooth	1.87	±9.6
10032	CAA	IEEE 802.15.1 Bluetooth (GFSK, DH5)	Bluetooth	1.16	±9.6
10033	CAA	IEEE 802.15.1 Bluetooth (PI/4-DQPSK, DH1)	Bluetooth	7.74	±9.6
10034	CAA	IEEE 802.15.1 Bluetooth (PI/4-DQPSK, DH3)	Bluetooth	4.53	±9.6
10035	CAA	IEEE 802.15.1 Bluetooth (PI/4-DQPSK, DH5)	Bluetooth	3.83	±9.6
10036	CAA	IEEE 802.15.1 Bluetooth (8-DPSK, DH1)	Bluetooth	8.01	±9.6
10037	CAA	IEEE 802.15.1 Bluetooth (8-DPSK, DH3)	Bluetooth	4.77	±9.6
10038	CAA	IEEE 802.15.1 Bluetooth (8-DPSK, DH5)	Bluetooth	4.10	±9.6
10039	CAB	CDMA2000 (1xRTT, RC1)	CDMA2000	4.57	±9.6
10042	CAB	IS-54 / IS-136 FDD (TDMA/FDM, PI/4-DQPSK, Halfrate)	AMPS	7.78	±9.6
10044	CAA	IS-91/EIA/TIA-553 FDD (FDMA, FM)	AMPS	0.00	±9.6
10048	CAA	DECT (TDD, TDMA/FDM, GFSK, Full Slot, 24)	DECT	13.80	±9.6
10049	CAA	DECT (TDD, TDMA/FDM, GFSK, Double Slot, 12)	DECT	10.79	±9.6
10056	CAA	UMTS-TDD (TD-SCDMA, 1.28 Mcps)	TD-SCDMA	11.01	±9.6
10058	DAC	EDGE-FDD (TDMA, 8PSK, TN 0-1-2-3)	GSM	6.52	±9.6
10059	CAB	IEEE 802.11b WiFi 2.4 GHz (DSSS, 2 Mbps)	WLAN	2.12	±9.6
10060	CAB	IEEE 802.11b WiFi 2.4 GHz (DSSS, 5.5 Mbps)	WLAN	2.83	±9.6
10061	CAB	IEEE 802.11b WiFi 2.4 GHz (DSSS, 11 Mbps)	WLAN	3.60	±9.6
10062	CAE	IEEE 802.11a/h WiFi 5 GHz (OFDM, 6 Mbps)	WLAN	8.68	±9.6
10063	CAE	IEEE 802.11a/h WiFi 5 GHz (OFDM, 9 Mbps)	WLAN	8.63	±9.6
10064	CAE	IEEE 802.11a/h WiFi 5 GHz (OFDM, 12 Mbps)	WLAN	9.09	±9.6
10065	CAE	IEEE 802.11a/h WiFi 5 GHz (OFDM, 18 Mbps)	WLAN	9.00	±9.6
10066	CAE	IEEE 802.11a/h WiFi 5 GHz (OFDM, 24 Mbps)	WLAN	9.38	±9.6
10067	CAE	IEEE 802.11a/h WiFi 5 GHz (OFDM, 36 Mbps)	WLAN	10.12	±9.6
10068	CAE	IEEE 802.11a/h WiFi 5 GHz (OFDM, 48 Mbps)	WLAN	10.24	±9.6
10069	CAE	IEEE 802.11a/h WiFi 5 GHz (OFDM, 54 Mbps)	WLAN	10.56	±9.6
10071	CAB	IEEE 802.11g WiFi 2.4 GHz (DSSS/OFDM, 9 Mbps)	WLAN	9.83	±9.6
10072	CAB	IEEE 802.11g WiFi 2.4 GHz (DSSS/OFDM, 12 Mbps)	WLAN	9.62	±9.6
10073	CAB	IEEE 802.11g WiFi 2.4 GHz (DSSS/OFDM, 18 Mbps)	WLAN	9.94	±9.6
10074	CAB	IEEE 802.11g WiFi 2.4 GHz (DSSS/OFDM, 24 Mbps)	WLAN	10.30	±9.6
10075	CAB	IEEE 802.11g WiFi 2.4 GHz (DSSS/OFDM, 36 Mbps)	WLAN	10.77	±9.6
10076	CAB	IEEE 802.11g WiFi 2.4 GHz (DSSS/OFDM, 48 Mbps)	WLAN	10.94	±9.6
10077	CAB	IEEE 802.11g WiFi 2.4 GHz (DSSS/OFDM, 54 Mbps)	WLAN	11.00	±9.6
10081	CAB	CDMA2000 (1xRTT, RC3)	CDMA2000	3.97	±9.6
10082	CAB	IS-54 / IS-136 FDD (TDMA/FDM, PI/4-DQPSK, Fullrate)	AMPS	4.77	±9.6
10090	DAC	GPRS-FDD (TDMA, GMSK, TN 0-4)	GSM	6.56	±9.6
10097	CAC	UMTS-FDD (HSDPA)	WCDMA	3.98	±9.6
10098	CAC	UMTS-FDD (HSUPA, Subtest 2)	WCDMA	3.98	±9.6
10099	DAC	EDGE-FDD (TDMA, 8PSK, TN 0-4)	GSM	9.55	±9.6
10100	CAF	LTE-FDD (SC-FDMA, 100% RB, 20 MHz, QPSK)	LTE-FDD	5.67	±9.6
10101	CAF	LTE-FDD (SC-FDMA, 100% RB, 20 MHz, 16-QAM)	LTE-FDD	6.42	±9.6
10102	CAF	LTE-FDD (SC-FDMA, 100% RB, 20 MHz, 64-QAM)	LTE-FDD	6.80	±9.6
10103	CAH	LTE-TDD (SC-FDMA, 100% RB, 20 MHz, QPSK)	LTE-TDD	9.29	±9.6
10104	CAH	LTE-TDD (SC-FDMA, 100% RB, 20 MHz, 16-QAM)	LTE-TDD	9.97	±9.6
10105	CAH	LTE-TDD (SC-FDMA, 100% RB, 20 MHz, 64-QAM)	LTE-TDD	10.01	±9.6
10108	CAH	LTE-FDD (SC-FDMA, 100% RB, 10 MHz, QPSK)	LTE-FDD	5.80	±9.6
10109	CAH	LTE-FDD (SC-FDMA, 100% RB, 10 MHz, 16-QAM)	LTE-FDD	6.43	±9.6
10110	CAH	LTE-FDD (SC-FDMA, 100% RB, 5 MHz, QPSK)	LTE-FDD	5.75	±9.6
10111	CAH	LTE-FDD (SC-FDMA, 100% RB, 5 MHz, 16-QAM)	LTE-FDD	6.44	±9.6