

Shenzhen Etheta Communication
Technology Co., Ltd.

(Shenzhen Etheta)

Customer: TCL Communication Ltd.

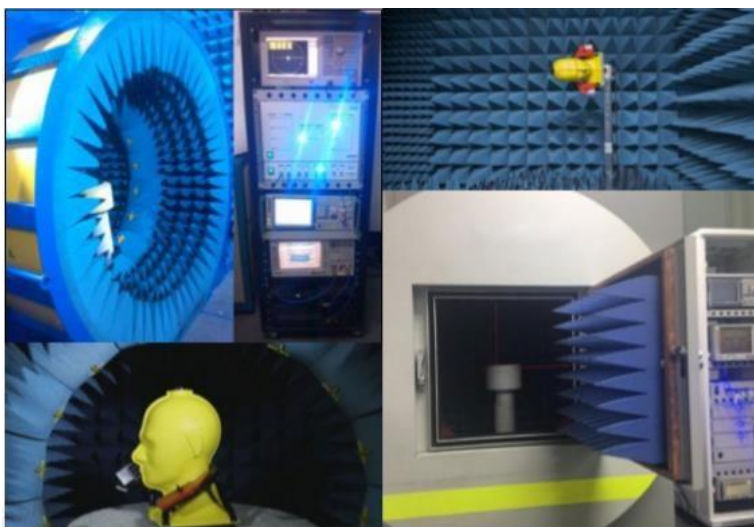
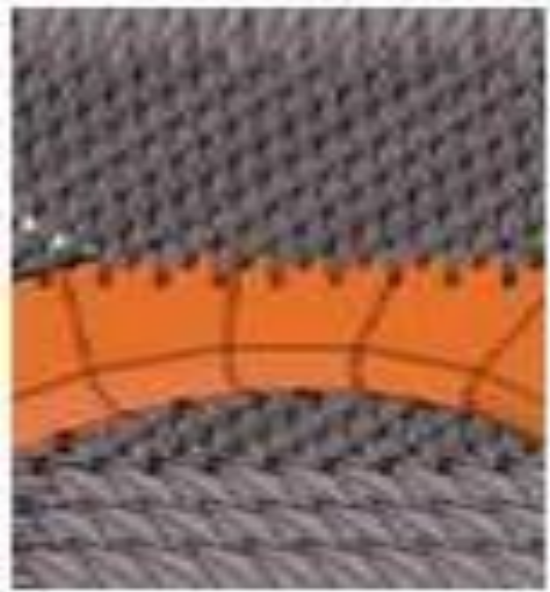
Project name: T434W

Product name: T434W- cellular &wifi antenna

Material: FPC

Date: 2023.08.25

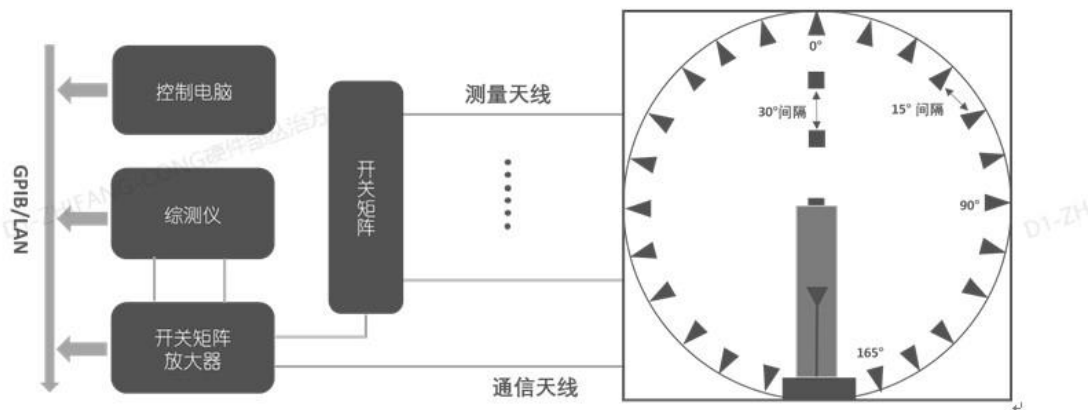
1: chamber room introduction and testing scope



Our company has a number of OTA test darkrooms, ranging from 400MHz to 8.5ghz, which can provide passive test and active test (including OTA overall 2G,3G,4G,5GFR test, WiFi multi-mode test, GPS active test, Bluetooth active test, which can provide antenna gain and efficiency. 2D orientation and apple chart analysis and upper and lower hemisphere efficiency values, mutual disturbance correlation coefficient test items

WIFI a/b/g/n/ac/a

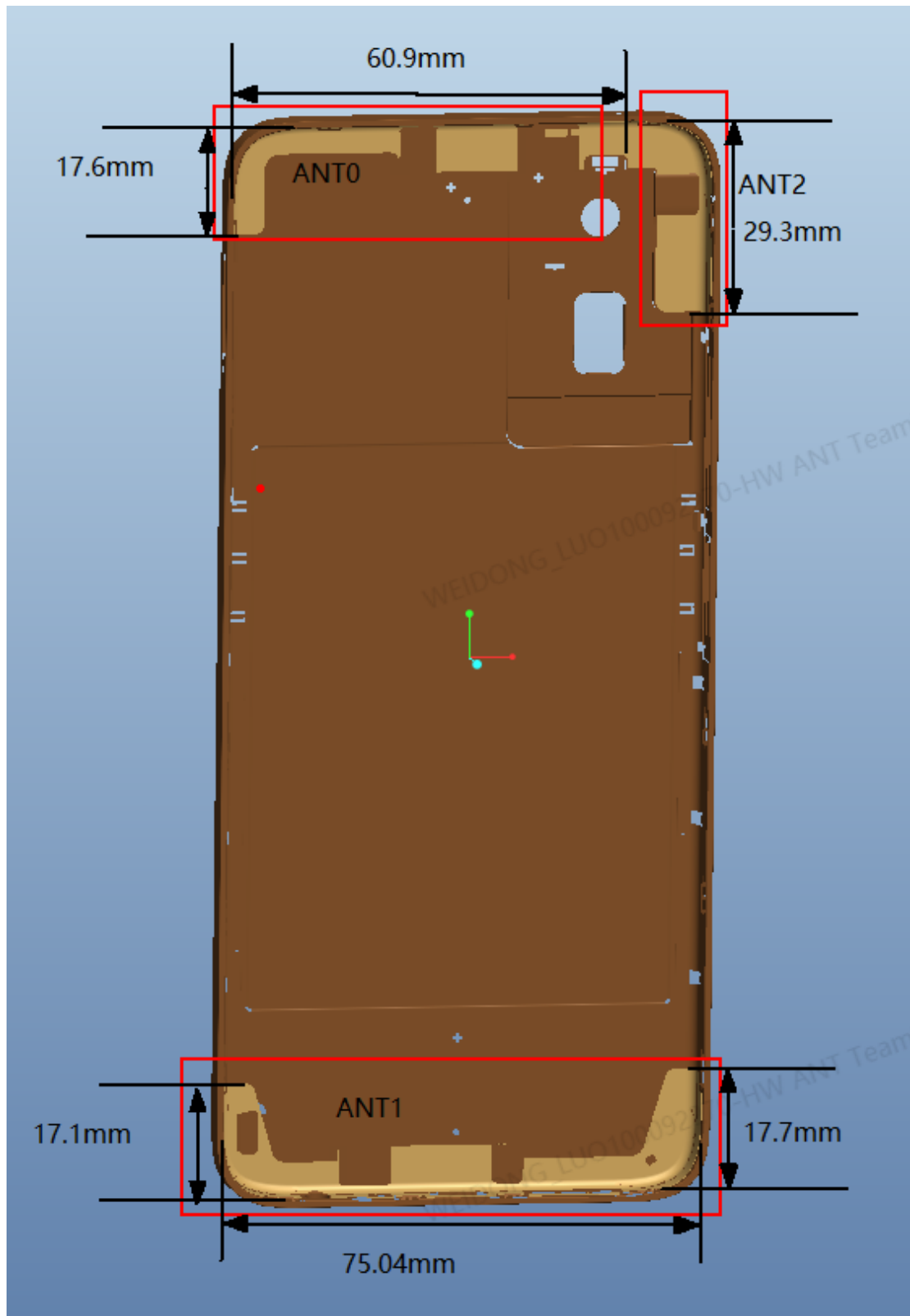
2: test system introduction:



The figure above shows the connection and control process between the darkroom of our company and the testing system and computer. The testing system has the characteristics of accurate, fast and simple testing
The operation interface is simple and humanized

3: Test result

Antenna placement:

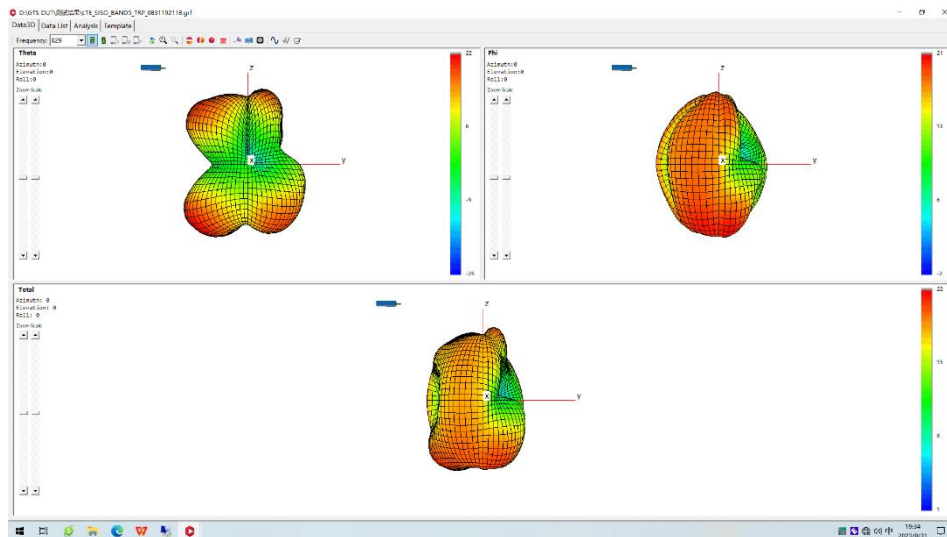


| Antenna | Type | Description |
|---------|------|-------------------------------------|
| 0 | FPC | LB TRX+MHB DRX |
| 1 | FPC | MHB TRX+LB DRX |
| 2 | FPC | GPS+2.4G WIFI/BT/BLE+5G WIFI |

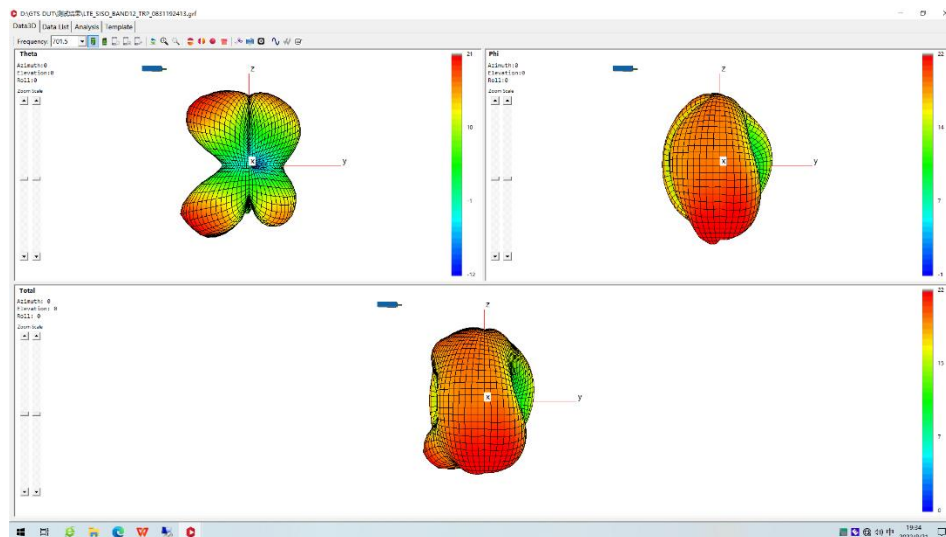
| Band | Gain Peak (dBi) |
|------------------|-----------------|
| LTE B5 | -4.22 |
| LTE B12 | -2.92 |
| LTE B26 | -4.41 |
| LTE B71 | -5.53 |
| LTE B2 | -0.36 |
| LTE B4 | -0.32 |
| LTE B25 | -0.2 |
| LTE B41 | -2.16 |
| LTE B66 | -0.76 |
| GPS | -1.12 |
| 2.4G WIFI/BT/BLE | -0.35 |
| 5G WIFI | -0.33 |

3D Pattern

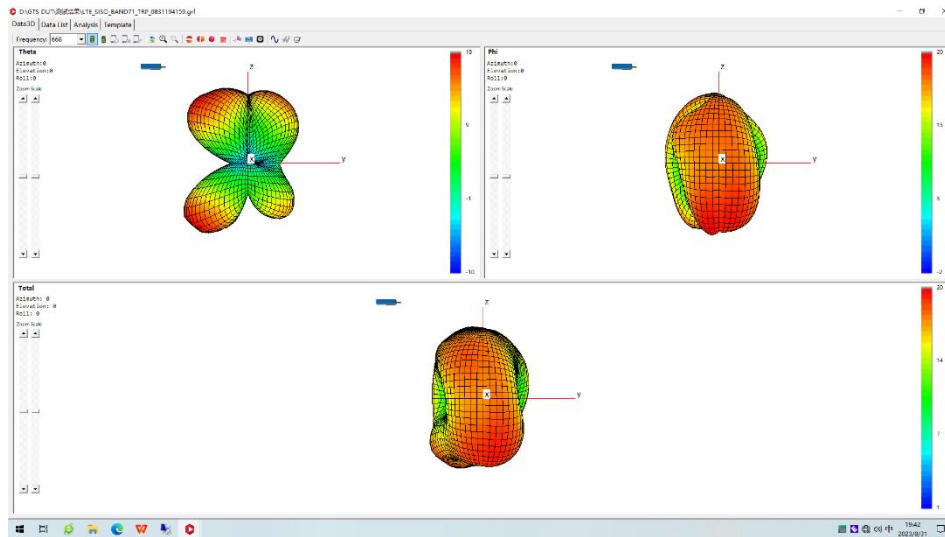
ANT 0_ 800M (Frequency=840MHz)



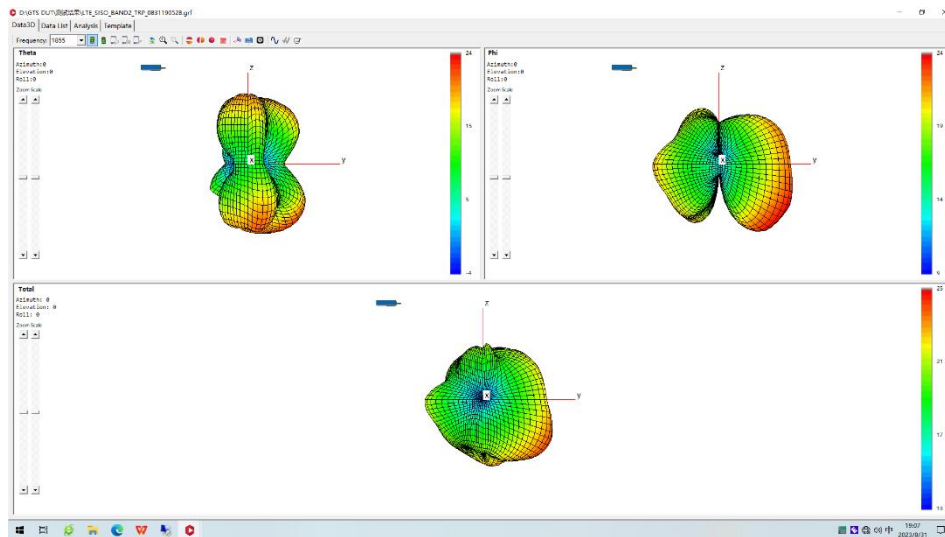
ANT 0_ 700M (Frequency=720MHz)



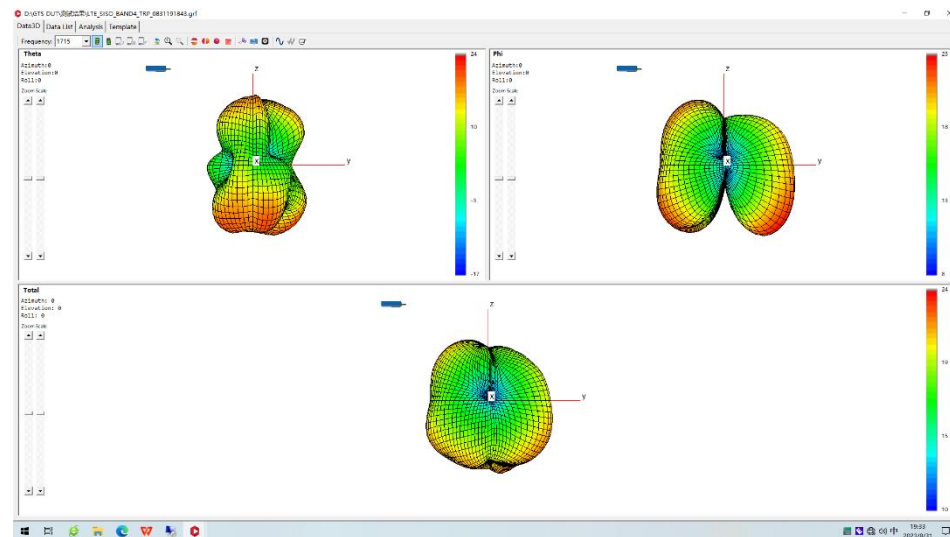
ANT 0_ 600M (Frequency=650MHz)



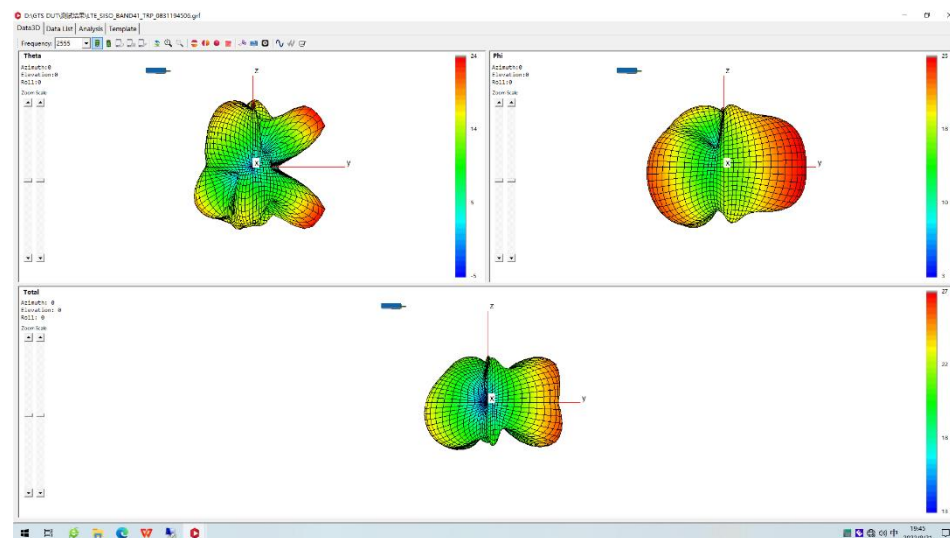
ANT1_1900M (Frequency=1980MHz)



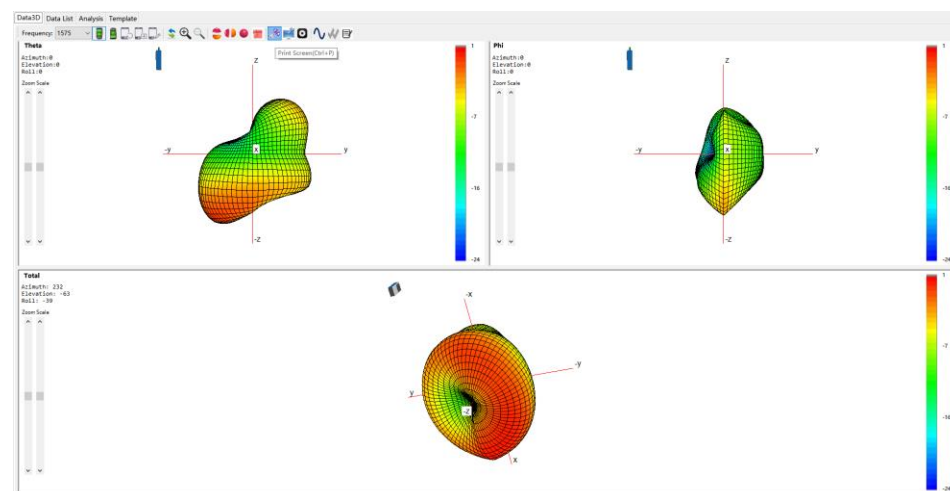
ANT 1_1715M (Frequency=1715MHz)



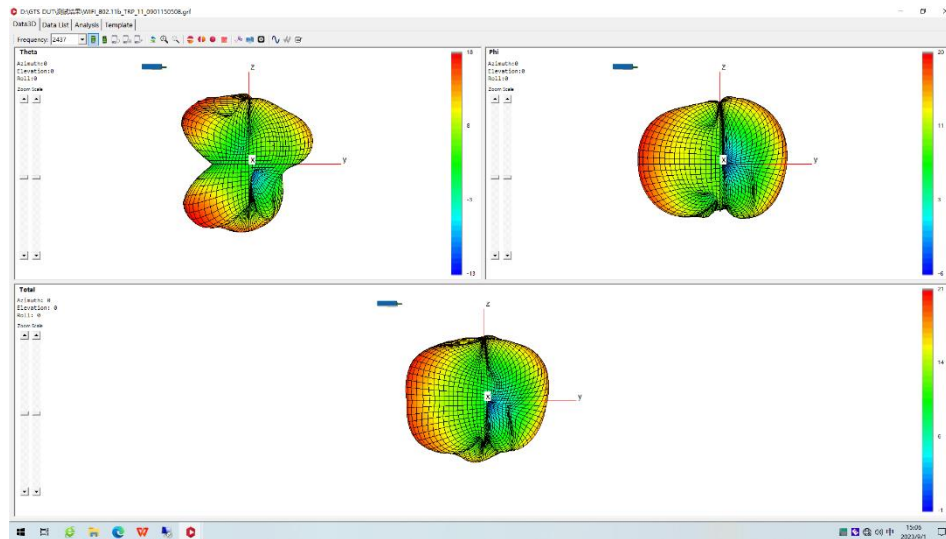
ANT 1_ 2500M (Frequency=2505MHz)



ANT 2_ 1575M (Frequency=1575MHz)



ANT 2_ 2450M (Frequency=2450MHz)



ANT 2_ 5450M (Frequency=5450MHz)

