

TCL 40^{XE 5G}

T609DL

Quick Start Guide

Thank you for choosing TCL. This booklet helps you get started with your new device. For more information about your phone or to download the complete user manual version, please visit tcl.com/us

BC



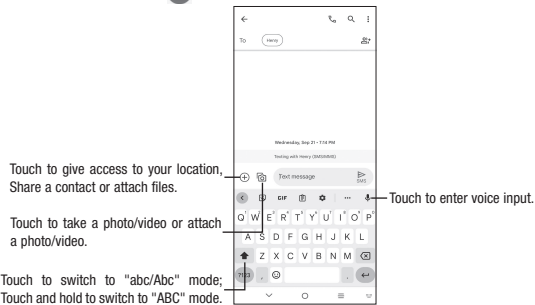
English - CJB2KH001AAA

Printed in China

Messages

You can create, edit, and receive SMS and MMS with this phone.

To access this feature, touch **Messages** from the Home screen.



Sending a message

Enter the mobile phone number of the recipient in the **To** bar or select a contact, then touch the **Text message** bar to type the text of the message. When finished, touch **Send** to send the text message.

An SMS of more than 160 characters will be split and sent as multiple SMS. A counter will be displayed on the right of the text box to remind you of how many characters can be entered in one message. Specific letters (accent) will also increase the size of the SMS, this may cause multiple SMS to be sent to your recipient.

Sending a multimedia message

MMS enables you to send video clips, images, photos, animations, slides and sounds to other compatible phones and e-mail addresses.

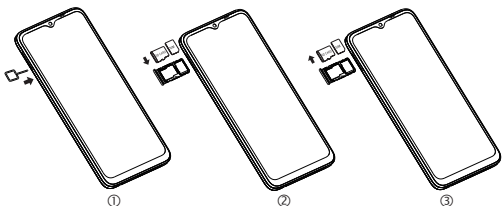
An SMS will be converted to MMS automatically when media files (image, video, audio, slides, etc.) are attached or subject or email addresses are added.

Phone Setup

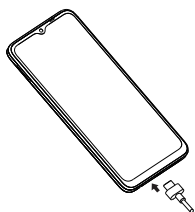
Installing or removing the SIM card and microSD™ card

Your phone already has a SIM card installed. If you need to change or remove your SIM card, follow the steps below.

- 1 Use the provided SIM pin to open the SIM tray.
- 2 To install SIM/microSD™ card, place the SIM/microSD™ card with the chip facing down into the SIM card tray and then slide it into its slot.
- 3 To remove SIM/microSD™ card, push up on the chip side of the cards inside the SIM tray.



Charging the battery



It is advised that you fully charge your battery before first use (100%). Connect the charger to your phone and an outlet. Charging status is indicated by the percentage on screen while the phone is powered off. The percentage increases as the phone is charged.

Gmail

In addition to your Gmail account, your phone supports external POP3, IMAP or Exchange email accounts.

To access this feature, swipe up on Home screen then select **Gmail**.

To create and send emails

- Touch **Create new** from the Inbox screen.
- Enter recipient(s) email address(es) in the To: field.
- If necessary, tap **cc** next to the To: field to add Cc/Bcc to the message.
- Enter the subject and the content of the message.
- Tap **Attach** to add an attachment.
- Tap **Send** to send.

Camera & Video

Your phone's camera is equipped with multiple modes for taking photos and videos. From the home screen, touch **Camera** to access.

To take a picture:

The screen acts as the viewfinder. First, position the object or landscape in the viewfinder, touch the screen to focus if necessary. Touch **Shutter** to capture, the photo will be automatically saved. You can also touch and hold **Shutter** to take burst shots.

To take a video:

Touch **VIDEO** to change the camera mode to video. Touch **Shutter** to start video recording. Touch the left part of this icon **Pause** to take a picture during video recording.

Touch the right part of this icon **Stop** to pause video recording and touch **Shutter** to continue. Touch **Shutter** to stop recording. The video will be automatically saved.



Power on your phone

Press and hold the Power key until the phone turns on, unlock your phone (screen lock, fingerprint, face unlock if necessary) and confirm. Your phone will then display the Home screen.

If you do not know your PIN/password or pattern, or if you have forgotten it, contact your service provider. Do not leave your PIN/password or pattern, with your phone. Store this information in a safe place when not in use.

Set up your phone for the first time

The first time you power on the phone, you'll be able to select your language, select a network, log in to your Google Account and Google Services, and select a screen lock option.

Power off your phone

To turn your phone off, press both the **power/Lock** button and **volume up** button at the same time, then tap **Power off** on the screen when it appears.

Personalize your Home screen

Add

By touching and holding an application, a folder, or a widget, you can activate the Move mode and drag the item to the Home screen of your choice.

Reposition

Touch and hold any application, folder, or widget icon to reposition or move to another Home screen. To activate the Move mode, touch and hold the icon then drag the item to the desired position and then release.

Remove

To remove an item, touch and hold it to activate the Move mode, drag it to the top of the screen over the Remove icon, then release when the item is gray.

Create folders

Stack one shortcut or application on top of another to create a new folder. You can name or rename the folder by opening it and entering a new name in the folder's title bar.

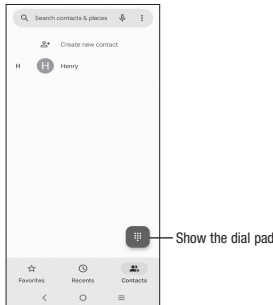
Wallpaper customization

Touch and hold the Home screen then touch **Wallpapers** to customize wallpaper.

Phone

Placing a call

Touch **Phone** from the Home screen.



Enter the desired number from the keyboard directly, or select one of the following:

- Access frequently called or favorite contacts in **Favorites**.
- View recently called numbers and contacts in **Recents**.
- Choose a saved contact in **Contacts**.

Touch **Call** to place the call.

To hang up a call, touch **End call**.

Answering or rejecting a call

When you receive a call:

- Swipe up to answer.
- Swipe down to reject.
- Touch **Reply** to reject the call by sending a preset message.

To mute the ringtone volume of an incoming call, press the **Volume up/down key**.

Getting connected

Your phone can connect to the Internet using 5G networks or Wi-Fi, whichever is convenient and available.

Network

The first time you turn on your phone, it will automatically configure your 5G network service.

To check the network connection you are using, swipe up on the **Home screen > Settings > Mobile network**.

Wi-Fi

Using Wi-Fi, you can connect to the Internet when your phone is within the range of a wireless network. Wi-Fi can be used on your phone even without a SIM card inserted.

To turn Wi-Fi on and connect to a wireless network

- Swipe up on the Home screen, then touch **Settings > Wi-Fi**.
- Touch the switch next to Wi-Fi to turn Wi-Fi on or off.
- Touch Wi-Fi, the detailed information of detected Wi-Fi networks is displayed in the Wi-Fi networks section.
- Touch a Wi-Fi network to connect. If the network you selected is secured, you are required to enter a password or other credentials (you may contact the network carrier for details). When finished, touch **CONNECT**.

Connecting to Bluetooth devices

Bluetooth is a short-range wireless communication technology that you can use to exchange data or connect to other Bluetooth devices for various uses.

To turn on Bluetooth

- Swipe up on the Home screen, then touch **Settings > Bluetooth**.
- Touch the switch to activate/deactivate this function.

To pair/connect your phone with a Bluetooth device

- Touch **Settings > Bluetooth > + Pair new device**.
- Touch a Bluetooth device you want to pair your phone with from the list.
- In the dialog that pops up, touch **PAIR** to confirm.
- If the pairing is successful, your phone will be connected to the device.

To disconnect/unpair from a Bluetooth device

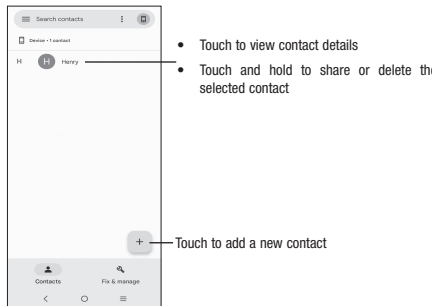
- Touch **Disconnect** next to the device name
- Touch **Forget device** and **FORGET DEVICE** to confirm

Contacts

Contacts enables quick and easy access to the people you want to reach. You can view and create contacts on your phone.

To access this feature, swipe up on the Home screen, then select **Contacts**.

Adding a contact



Editing a contact

To edit contact information, touch **Edit** in the contact details screen. When finished, touch **SAVE**.

Importing, exporting, and sharing contacts

From the Contacts screen, touch **Fix & manage** to open the options menu, then select **Import from SIM**, **Import from file** or **Export to file**.

Share a single contact or multiple contacts with others by sending the contact's vCard to them via Bluetooth, Gmail, etc.

Touch and hold the contact (s) you want to share, touch **Share**.

Status bar

From the status bar, you can view both phone status and notification information.

Status icons

	GSM		Vibrate mode
	WCDMA		Alarm is set
	LTE		Connected to a Wi-Fi network
	5G		Speakerphone is on
	Signal strength		No SIM card inserted
	No signal		Battery is charging
	Airplane mode		Battery is low
	Bluetooth connected		Battery is partially drained
	Headset connected		Battery is full
	GPS is on		

Notification icons

	New Gmail message		Missed call
	New text or multimedia message		Connect to open Wi-Fi network
	Upcoming event		Uploading data
	Downloading data		System update available

Regulatory Agency Information	
FCC ID	2ACCJH168
Max. SAR (W/kg) - Head	1.379
Max. SAR (W/kg) - Body	1.132
HAC (Hearing Aid Compatible) & Rating	M3/T3