

TCL 30+

QUICK START GUIDE

SAVE
PAPER
SAVE
TREES

PLEASE CONSIDER THE
ENVIRONMENT BEFORE PRINTING



English - CJB2JF3LCAAA

Printed in China

T676J

Your Mobile

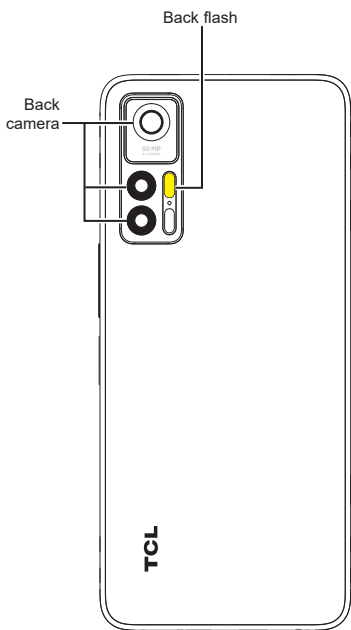
Keys and connectors



Right-hand mode:

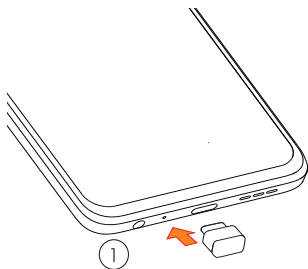


Left-hand mode:



Getting started

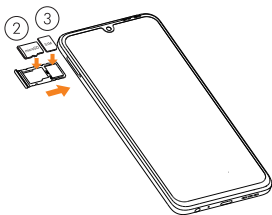
- ① Charge the battery



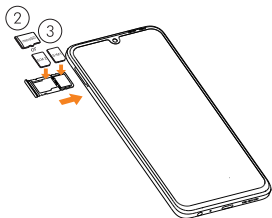
- ② Insert or remove the SIM card or microSD card.

- ③ Insert or remove the SIM card.

Single-SIM devices only



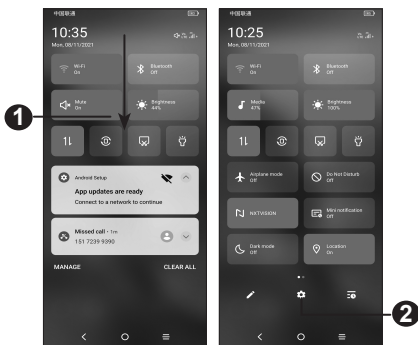
Dual-SIM devices only



Home screen

You can bring all of the items (applications, shortcuts, folders) that you use most frequently to your Home screen for quick access.


Touching the **Home** button always takes you back to the main Home screen.



- 1** : Touch and drag down to open the Notification panel.
- 2** : Open **Settings**, to view the full list of settings.




Phone call

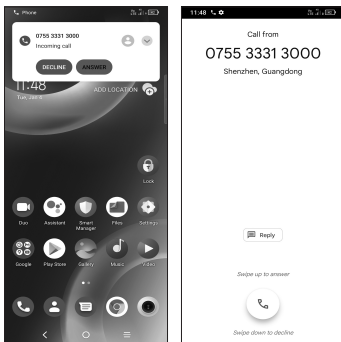
Making a call

Enter the desired number from the keyboard and touch  to make a call.

Answering a call

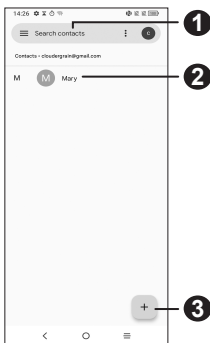
When you receive a call:

- Tap ANSWER, or swipe up  to answer;
- Tap DECLINE, or swipe down  to reject;
- Tap  to reject the call by sending a preset message.



Contacts

You can view and create contacts on your phone and synchronize these with your Gmail contacts or other applications on the web or on your phone.



1 : Search in **Contacts**

2 : Open the Quick contact panel

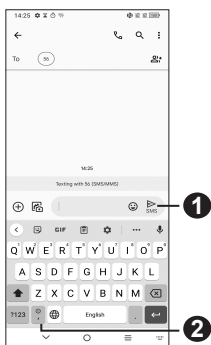
Touch and hold to share or delete the selected contact

3 : Add new contact

Messaging

You can create, edit, and receive SMS and MMS.

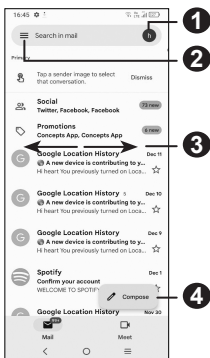
An SMS will be converted to MMS automatically when media files (image, video, audio, slides, etc.) are attached or subject or email addresses are added.



- 1** : Send the text message
- 2** : Insert emoticons

Gmail

The first time you set up your phone, you can select to use an existing Gmail account or to create a new one.



- 1** : Account information
- 2** : See options and settings
- 3** : Swipe right or left to archive the email
- 4** : Create an email

Help

- Check out the TCL website at tclusa.com for tutorials and answers to frequently asked questions, and to download the User Manual.
- To get support for your phone, visit the TCL website: <https://www.tcl.com/mx/es.html>
- Update your phone's software
Go to **Settings > System > System Update** to check software updates.
- Back up your personal data
Go to **Settings > System > Backup** and turn it on.
- Reset your phone
Go to **Settings > System > Reset > Erase all data (factory reset) > Erase all data.**

General Information

- Visit the TCL website at <https://www.tcl.com/mx> for tutorials and answers to frequently asked questions, and to download the User Manual.
- To get support for your phone, visit the TCL website (<https://www.tcl.com/mx/es/service-support-mobile.html>), or dial the number listed below:

Argentina: 08001220682

Chile: 800000147

Colombia: 18009520823

Ecuador: 800000635

Mexico: 8008909908

Peru: 080000698

The Dominican Republic: 8887600164

Uruguay: 405296624

Venezuela: 08001005368