



Appendix C

Photographs

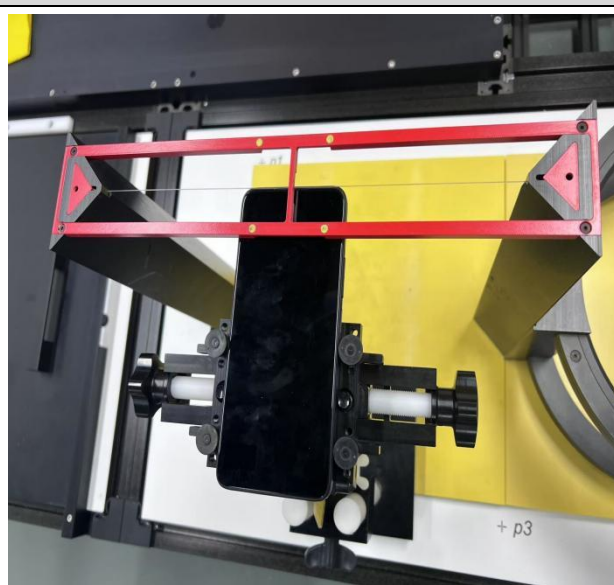
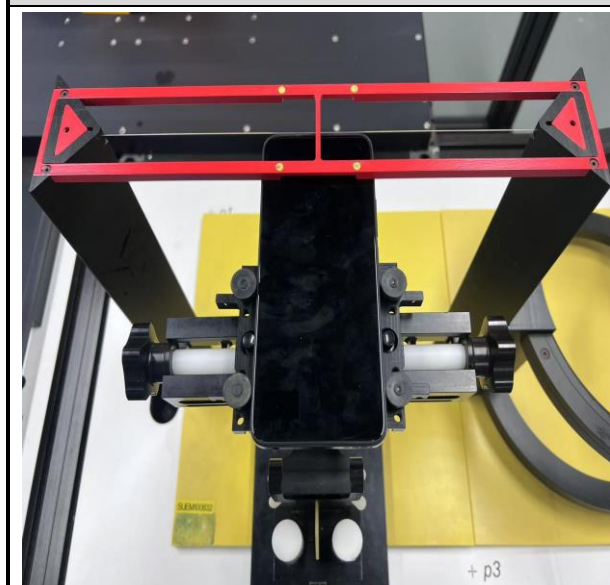
1. HAC measurement System
2. Photographs of EUT test position
3. EUT Constructional Details
4. DUT Antenna Locations

1 HAC measurement System

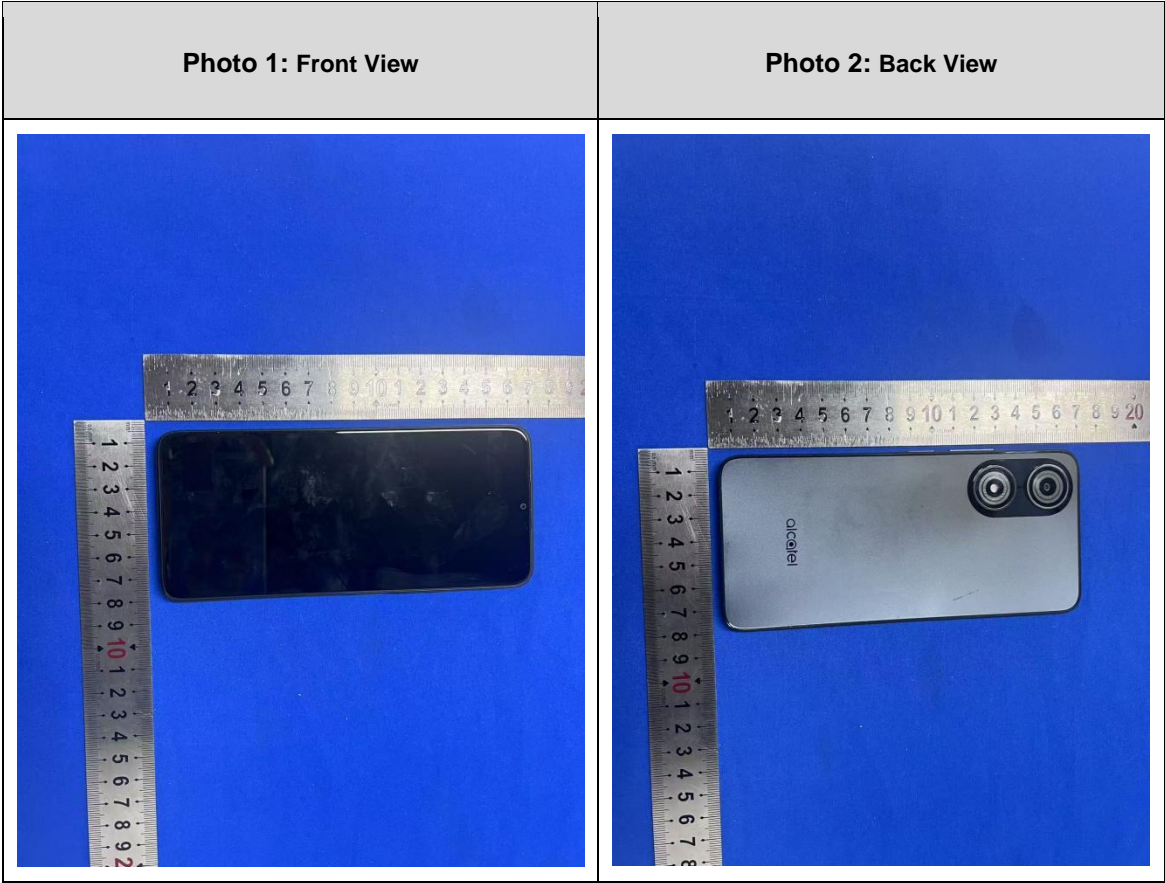


2 Photographs of Test Setup

Photo 1: Receiver of mobile contact center of Arch

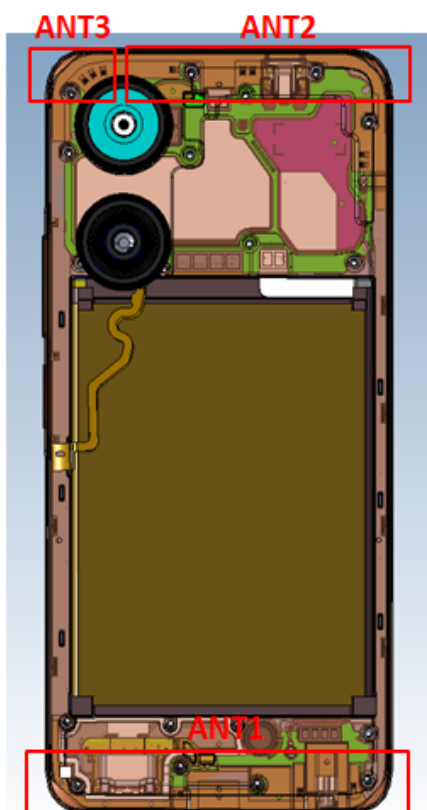


3 EUT Constructional Details



4 DUT Antenna Locations

T451A



ANT1:

TRX:DCS1800/PCS1900/WB1/WB2/WB4/LTEB1/B2/B3/B4/B5/B7/B66/B38/B40/B41;

DRX:GSM850/GSM900/WB5/WB8/LTEB5/B8/B12/B13/B17/B20/B26/B28

ANT2:

TRX:GSM850/GSM900/WB5/WB8/LTEB5/B8/B12/B13/B17/B20/B26/B28

DRX:DCS1800/PCS1900/WB1/WB2/WB4/LTEB1/B2/B3/B4/B5/B7/B66/B38/B40/B41

ANT3:

BT/GPS/2.4G WIFI

Note:

1) The diversity Antenna does not support transmitter function.