

SAR TEST REPORT

For

2G HOME PHONE

Model Number: F112G

FCC ID: 2ACCJB020

Report Number: WT168000337

Test Laboratory : Shenzhen Academy of Metrology and Quality
Inspection
National Testing Center for Digital Electronic Products

Site Location : NETC Building, No.4 Tongfa Road, Xili Town,
Nanshan District, Shenzhen, Guangdong, China

Tel : 0086-755-86928965

Fax : 0086-755-86009898-31396

Web : www.smq.com.cn

Email : emcrf@smq.com.cn

Test report declaration

Applicant : TCL Communication Ltd.
Address : 5F, C-Tower, No. 232, Liang Jing Road,ZhangJiang High-Tech Park,
Pudong,Shanghai, China
Manufacturer : TCL COMMUNICATION TECHNOLOGY HOLDINGS LIMITED
70 Huifeng 4rd,ZhongKai Hi-tech Development
Address : District ,Huizhou,Guangdong 516006 P.R.China (TCL Mobile
Communication Co.,LTD.Huizhou)
EUT Description : Fix wireless terminal
Model No : F112G
Trade mark : : ALCATEL ONETOUCH
Marketing name :--
FCC ID : : 2ACCJB020

Test Standards:

IEEE 1528-2003 FCC KDB 865664 D01 v01r3

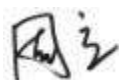
The EUT described above is tested by Shenzhen Academy of Metrology and Quality Inspection EMC Laboratory to determine the compliance of the applicable standards stated above.

Shenzhen Academy of Metrology and Quality Inspection EMC Laboratory is assumed full responsibility for the accuracy of the test results.

The results documented in this report only apply to the tested sample, under the conditions and modes of operation as described herein.

The test report shall not be reproduced in part without written approval of the laboratory.

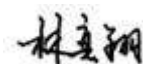
Project Engineer:



Date: Feb 01,2016

(Zhou Li)

Checked by:



Date: Feb 01,2016

(Lin YiXiang)

Approved by:



Date: Feb 01,2016

(Lin Bin)

Revision History

No	Date	Reason
--	2016.02.01	Initial issue

TABLE OF CONTENTS

TEST REPORT DECLARATION	2
1. REPORTED SAR SUMMARY.....	6
2. GENERAL INFORMATION.....	7
2.1. Report information.....	7
2.2. Laboratory Accreditation and Relationship to Customer	7
3. DESCRIPTION OF THE DEVICE UNDER TEST (DUT)	8
3.1. DUT Description	8
3.2. RF output power Tune up limit	8
3.3. Applied Standards	9
3.4. SAR Limit.....	9
4. TEST CONDITIONS	10
4.1. Temperature and Humidity	10
4.2. Introduction of SAR.....	10
4.3. Test Configuration	10
5. DESCRIPTION OF THE TEST EQUIPMENTS.....	12
5.1. Measurement System and Components	12
5.2. Isotropic E-field Probe Type EX3DV4.....	13
5.3. Phantoms.....	13
5.4. Tissue-equivalent Liquids	14
5.5. Device Holder.....	17
5.6. Test Position.....	18
5.7. Scan Procedures	18
5.8. SAR Averaging Methods.....	18
6. MEASUREMENT UNCERTAINTY	21
6.1. Uncertainty for SAR Test	21
6.2. Uncertainty for System Validation	22
7. CONDUCTED TEST RESULTS	23
7.1. Conducted power measurements of GSM850	23
7.2. Conducted power measurements of GSM1900	23
8. SAR TEST RESULTS.....	24
8.1. GSM850 SAR results.....	25

8.2.	PCS1900 SAR results	26
8.3.	Repeated SAR results	27
9.	SIMULTANEOUS TRANSMISSION SAR ANALYSIS.....	28
APPENDIX A:	SYSTEM CHECKING SCANS	29
APPENDIX B:	SYSTEM VALIDATION.....	32
APPENDIX C:	MEASUREMENT SCANS.....	33
APPENDIX D:	RELEVANT PAGES FROM PROBE CALIBRATION REPORT(S).....	36
APPENDIX E:	RELEVANT PAGES FROM DIPOLE VALIDATION KIT REPORT(S).....	46
APPENDIX E:	DUT PHOTOS	63
APPENDIX F:	TEST POSITION PHOTOS.....	66
APPENDIX G:	LABORATORY ACCREDITATION CERTIFICATE	错误！未定义书签。

1. REPORTED SAR SUMMARY

The maximum results of Specific Absorption Rate (SAR) found during testing are as follows.

Highest Reported Standalone SAR Summary

Exposure Position	Frequency Band	Highest Reported 1g-SAR (W/kg)(25mm)
Back	GSM850	0.575
Back	GSM1900	0.63

2. GENERAL INFORMATION

2.1. Report information

This report is not a certificate of quality; it only applies to the sample of the specific product/equipment given at the time of its testing. The results are not used to indicate or imply that they are application to the similar items. In addition, such results must not be used to indicate or imply that SMQ approves recommends or endorses the manufacture, supplier or use of such product/equipment, or that SMQ in any way guarantees the later performance of the product/equipment.

The sample/s mentioned in this report is/are supplied by Applicant, SMQ therefore assumes no responsibility for the accuracy of information on the brand name, model number, origin of manufacture or any information supplied.

Additional copies of the report are available to the Applicant at an additional fee. No third part can obtain a copy of this report through SMQ, unless the applicant has authorized SMQ in writing to do so.

2.2. Laboratory Accreditation and Relationship to Customer

The testing report were performed by the Shenzhen Academy of Metrology and quality Inspection EMC Laboratory (Guangdong EMC compliance testing center), in their facilities located at Bldg. of Metrology & Quality Inspection, Longzhu Road, Nanshan District, Shenzhen, Guangdong, China. At the time of testing, Laboratory is accredited by the following organizations:

China National Accreditation Service for Conformity Assessment (CNAS) accredits the Laboratory for conformance to FCC standards, EMC international standards and EN standards. The Registration Number is CNAS L0579.

The Laboratory is listed in the United States of American Federal Communications Commission (FCC), and the registration number are 446246 806614 994606 (semi anechoic chamber).

The Laboratory is registered to perform emission tests with Industry Canada (IC), and the registration number is IC4174.

TUV Rhineland accredits the Laboratory for conformance to IEC and EN standards, the registration number is E2024086Z02.

3. DESCRIPTION OF THE DEVICE UNDER TEST (DUT)

3.1.DUT Description

Frequency Bands	GSM850/GSM1900
Modulation Mode	: GSM(GMSK)
Antenna type	External Antenna
Battery Model	Li-ion Battery
Battery Specification	3.7V/400mAh
Hardware Revision	V3
Software Revision	K4210ZZ0BM00

Remark: F112G is a variant model of F112G. The report number of F112G is WT158002420 SAR. GSM850/1900 is tested for F112G in worst case position of F112G in this report. The detailed product change description please refers to the DUT Description.

3.2.RF output power Tune up limit

Technology/Band	Target Power and Tolerance (dBm)
GSM850	32 [-1.0dB~~+1.0dB]
GSM1900	30 [-1.0dB~~+1.0dB]

3.3. Applied Standards

ANSI Std C95.1-1992	Safety Levels with Respect to Human Exposure to Radio Frequency Electromagnetic Fields, 3kHz-300GHz.(IEEE Std C95.1-1991)
IEEE Std 1528-2003	Recommended Practice for Determining the Peak Spatial-Average Specific Absorption Rate(SAR) in the Human Head from Wireless Communications Devices: Measurement Techniques
IEEE Std 1528a-2005	IEEE Recommended Practice for Determining the Peak Spatial-Average Specific Absorption Rate(SAR) in the Human head from Wireless Communications Devices: Measurement Techniques Amendment1: CAD File for Human Head Model(SAM Phantom)
KDB 447498 D01 Mobile Portable RF Exposure v05r02	Mobile and Portable Device RF Exposure Procedures and Equipment Authorization Policies
KDB 865664 D01 SAR measurement 100 MHz to 6 GHz v01r03	SAR Measurement Requirements for 100 MHz to 6 GHz
KDB 865664 D02 RF Exposure Reporting v01r01	RF Exposure Compliance Reporting and Documentation Considerations

3.4. SAR Limit

This device belongs to portable device category because its radiating structure is allowed to be used within 20 centimeters of the body of the user. Limit for General Population/Uncontrolled exposure should be applied for this device, it is 1.6 W/kg as averaged over any 1 gram of tissue.

4. TEST CONDITIONS

4.1. Temperature and Humidity

Ambient temperature (°C):	21-22
Ambient humidity (RH %):	59-60

4.2. Introduction of SAR

SAR is related to the rate at which energy is absorbed per unit mass in an object exposed to a radio field. The SAR distribution in a biological body is complicated and is usually carried out by experimental techniques or numerical modeling. The standard recommends limits for general public group.

SAR Definition:

$$SAR = \frac{d}{dt} \left(\frac{dW}{dm} \right) = \frac{d}{dt} \left(\frac{dW}{\rho dv} \right) \quad SAR = C \frac{\delta T}{\delta t} \quad SAR = \frac{\sigma |E|^2}{\rho}$$

In the first equation, the SAR definition is the time derivative (rate) of the incremental energy (dW) absorbed by (dissipated in) an incremental mass (dm) contained in a volume element (dv) of a given density ρ).

In the second equation, C is the specific heat capacity, δT is the temperature rise and δt is the exposure duration.

The last equation relates to the electrical field, where σ is the conductivity of the tissue, ρ is the mass density of the tissue and E is the rms electrical field strength.

However for evaluating SAR of low power transmitter, electrical field measurement is typically applied.

SAR is expressed in units of Watts per kilogram (W/kg)

4.3. Test Configuration

GSM Test Configurations

SAR tests for GSM 850 and GSM 1900, a communication link is set up with a System Simulator (SS) by air link. Using E5515C the power level is set to “5” for GSM 850, set to “0” for GSM 1900.

According to specification 3GPP TS 51.010, the maximum power of the GSM can do the power reduction for the multi-slot. The allowed power reduction in the multi-slot configuration is as following:

Output power of reductions:

Number of timeslots in uplink assignment	Permissible nominal reduction of maximum output power,(dB)
1	0
2	0 to 3,0
3	1,8 to 4,8
4	3,0 to 6,0

5. DESCRIPTION OF THE TEST EQUIPMENTS

5.1.Measurement System and Components

No.	Equipment	Model No.	Serial No.	Manufacturer	Last Calibration Date	Period
1	SAR test system	TX60L	F08/5AY8A1/A/01+F08/	SPEAG	NCR	NCR
2	Electronic Data Transmitter	DAE4	876	SPEAG	2015.03.09	1year
3	SAR Probe	EX3DV4	3881	SPEAG	2015.07.24	1year
4	System Validation Dipole,835MHz	D835V2	4d141	SPEAG	2015.09.24	3year
5	System Validation Dipole,1900MHz	D1900V2	5d162	SPEAG	2015.09.16	3year
6	Dielectric Probe Kit	85070E	MY44300455	Agilent	NCR	NCR
7	Dual-directional coupler,0.10-2.0GHz	778D	MY48220198	Agilent	NCR	NCR
8	Dual-directional coupler,2.00-18GHz	772D	MY46151160	Agilent	NCR	NCR
9	Coaxial attenuator	8491A	MY39266348	Agilent	NCR	NCR
10	Power Amplifier	ZHL42W	81709	MINI-CIRCUITS	NCR	NCR
11	Signal Generator	SMR20	100047	R&S	2015.05.12	1year
12	Power Meter	NRVD	100041	R&S	2015.04.16	1year
13	Call Tester	CMU 200	100110	R&S	2015.12.06	1year
14	Network Analyzer	E5071C	MY46109550	Agilent	2015.07.02	1Year
15	Flat Phantom	ELI4.0	TP-1904	SPEAG	NCR	NCR
16	Twin Phantom	SAM	TP-1504	SPEAG	NCR	NCR

The measurements were performed using an automated near-field scanning system, DASY5, manufactured by Schmid & Partner Engineering AG (SPEAG) in Switzerland. The SAR extrapolation algorithm used in all measurements was the “advanced extrapolation” algorithm.

5.2. Isotropic E-field Probe Type EX3DV4

Construction	Symmetrical design with triangular core Interleaved sensors Built-in shielding against static charges PEEK enclosure material (resistant to organic solvents, e.g., butyl diglycol)
Calibration	Calibration certificate in Appendix C
Frequency	10MHz to 4GHz (dosimetry); Linearity: ± 0.2 dB (30MHz to 4GHz)
Directivity	± 0.2 dB in HSL (rotation around probe axis) ± 0.3 dB in HSL (rotation normal to probe axis)
Dynamic Range	5 μ W/g to > 100mW/g; Linearity: ± 0.2 dB
Dimensions	Overall length: 330 mm Tip length: 20 mm Body diameter: 12 mm Tip diameter: 3.9 mm Distance from probe tip to dipole centers: 2.0 mm
Application	General dosimetry up to 4 GHz Compliance tests of mobile phones Fast automatic scanning in arbitrary phantoms

5.3. Phantoms

The phantom used for all tests i.e. for both system checks and device testing, was the twin-headed "SAM Phantom", manufactured by SPEAG. The SAM twin phantom is a fiberglass shell phantom with 2mm shell thickness (except the ear region, where shell thickness increases to 6mm).

System checking was performed using the flat section, whilst Head SAR tests used the left and right head profile sections. Body SAR testing also used the flat section between the head profiles.



SAM Twin Phantom

5.4. Tissue-equivalent Liquids

Tissue-equivalent liquids that are used for testing, which are made mainly of sugar, salt and water solution. All tests were carried out using tissue-equivalent liquids whose dielectric parameters were within $\pm 5\%$ of the recommended values. All tests were carried out within 24 hours of measuring the dielectric parameters.

The depth of the Tissue-equivalent liquid was 15.0 ± 0.5 cm measured from the ear reference point (ERP) during system checking and device measurements.

Tissue-equivalent liquid Recipes

The following recipe(s) were used for Head Tissue-equivalent liquid(s):



Ingredient (% by weight)	Frequency Band			
	800-900	1800-1900	800-900	1800-1900
Tissue Type	Head	Head	Body	Body
Water	40.6	56.1	50.8	68.9
Sugar	58.2	--	48.2	--
Salt	1.0	0.03	0.9	0.1
Preventol D-7	0.1	--	0.1	--
DGMBE	--	43.87	--	31
Cellulose	0.1	--	--	--

Tissue-equivalent liquids used in the Measurements

Dielectric parameters of the Tissue-equivalent liquids were measured before testing using the dielectric probe kit and the Network Analyzer. The measurement is carried out following the Agilent 85070 dielectric probe software instruction. A calibration of the probe open in air, probe with shorting block and probe in water is performed before measurement. After calibration, Insert the probe into the tissue liquid, trigger a measurement on software interface and record the data.

Body Tissue-equivalent liquid measurements:

Used Target Frequency	Target Tissue		Measured Tissue		Liquid Temp.	Test Date
	ϵ_r (+/-5%)	σ (S/m)(+/-5%)	ϵ_r	σ (S/m)		
835MHz Body	55.2 (52.44~57.96)	0.97 (0.92~1.02)	55.0	0.98	22°C	2016-01-25
1900MHz Body	53.3 (50.64~55.97)	1.52 (1.44~1.60)	53.1	1.53	22°C	2016-01-26
ϵ_r = Relative permittivity, σ = Conductivity						

System Check

The system check is performed for verifying the accuracy of the complete measurement system and performance of the software. The system check is performed with tissue equivalent material according to IEEE P1528(described above). The following table shows system check results for all frequency bands and tissue liquids used during the tests(Graphic Plot(s)see Appendix A).

System checking, Body Tissue-equivalent liquid:

System Check	Target SAR (1W) (+/-10%)		Measured SAR (Normalized to 1W)		Liquid Temp.	Test Date
	1-g(W/kg)	10-g (W/kg)	1-g (W/kg)	10-g (W/kg)		
D835V2 Body	9.51 (8.6~10.5)	6.25 (5.6~7.2)	9.92	6.44	22°C	2016-01-25
D1900V2 Body	41.2 (37.1~45.3)	21.6 (19.4~23.8)	44.4	22.16	22°C	2016-01-26

Plots of the system checking scans are given in Appendix A.

5.5. Device Holder

The device was placed in the device holder (illustrated below) that is supplied by SPEAG as an integral part of the DASY system.

The DASY device holder is designed to cope with the different positions given in the standard. It has two scales for device rotation (with respect to the body axis) and device inclination (with respect to the line between the ear reference points). The rotation centers for both scales is the ear reference point (ERP). Thus the device needs no repositioning when changing the angles.



Device holder supplied by SPEAG

5.6. Test Position

The device has an external antenna, the antenna is located on the top side of the EUT, and can be oriented in different directions. According to the usage scenarios, the following positions with the transmitting antenna located at a distance 25mm from the flat phantom are tested:

- 1) Back side with antenna horizontal left
- 2) Back side with antenna horizontal right
- 3) Back side with antenna horizontal top
- 4) Back side with antenna vertical down
- 5) Top side with antenna horizontal left
- 6) Top side with antenna horizontal right
- 7) Top side with antenna vertical up
- 8) Top side with antenna vertical down

5.7. Scan Procedures

The reference and drift measurements are located at the beginning and end of the batch process. They measure the field drift at one single point in the liquid over the complete procedure. The indicated drift is mainly the variation of the DUT's output power and should vary max. $\pm 5\%$. The surface check measurement tests the optical surface detection system of the DASY5 system by repeatedly detecting the surface with the optical and mechanical surface detector and

comparing the results. The output gives the detecting heights of both systems, the difference between the two systems and the standard deviation of the detection repeatability. Air bubbles or refraction in the liquid due to separation of the sugar-water mixture gives poor repeatability (above $\pm 0.1\text{mm}$). To prevent wrong results tests are only executed when the liquid is free of air bubbles. The difference between the optical surface detection and the actual surface depends on the probe and is specified with each probe. (It does not depend on the surface reflectivity or the probe angle to the surface within $\pm 30^\circ$.)

The area scan measures the SAR above the DUT or verification dipole on a parallel plane to the surface. It is used to locate the approximate location of the peak SAR with 2D spline interpolation. The robot performs a stepped movement along one grid axis while the local electrical field strength is measured by the probe. The probe is touching the surface of the SAM during acquisition of measurement values. The standard scan uses large grid spacing for faster measurement. Standard grid spacing for head measurements is 15 mm in x- and y-dimension ($\leq 2\text{GHz}$), 12 mm in x- and y-dimension (2-4 GHz) and 10mm in x- and y-dimension (4-6GHz). If a finer resolution is needed, the grid spacing can be reduced. Grid spacing and orientation have no influence on the SAR result. For special applications where the standard scan method does not find the peak SAR within the grid, e.g. mobile phones with flip cover, the grid can be adapted in orientation.

Results of this coarse scan are shown in Appendix B.

A “zoom scan” measures the field in a volume around the 2D peak SAR value acquired in the previous “coarse” scan. This is a fine grid with maximum scan spatial resolution: Δx_{zoom} , $\Delta y_{\text{zoom}} \leq 2\text{GHz} \leq 8\text{ mm}$, 2-4GHz - $\leq 5\text{ mm}$ and 4-6 GHz- $\leq 4\text{ mm}$; $\Delta z_{\text{zoom}} \leq 3\text{GHz} - \leq 5\text{ mm}$, 3-4 GHz- $\leq 4\text{ mm}$ and 4-6GHz- $\leq 2\text{mm}$ where the robot additionally moves the probe along the z-axis away from the bottom of the Phantom. DASY5 is also able to perform repeated zoom scans if more than 1 peak is found during area scan. Test results relevant for the specified standard (see chapter 1.5.) are shown in table form in chapter 3.2.

A Z-axis scan measures the total SAR value at the x-and y-position of the maximum SAR value found during the cube scan. The probe is moved away in z-direction from the bottom of the SAM phantom in 2mm steps. This measurement shows the continuity of the liquid and can – depending in the field strength- also show the liquid depth. A z-axis scan of the measurement with maximum SAR value is shown in Appendix B.

The following table summarizes the area scan and zoom scan resolutions per FCC KDB 865664D01:

Frequency	Maximum Area Scan resolution ($\Delta x_{\text{area}}, \Delta y_{\text{area}}$)	Maximum Zoom Scan spatial resolution($\Delta x_{\text{zoom}} \Delta y_{\text{zoom}}$)	Maximum Zoom Scan spatial resolution			Minimum zoom scan volume (x,y,z)
			Uniform Grid	Graded Grad		
				$\Delta z_{\text{zoom}}(n)$	$\Delta z_{\text{zoom}}(1)$	
$\leq 2\text{GHz}$	$\leq 15\text{mm}$	$\leq 8\text{mm}$	$\leq 5\text{mm}$	$\leq 4\text{mm}$	$\leq 1.5 \cdot \Delta z_{\text{zoom}}(n-1)$	$\geq 30\text{mm}$
2-3GHz	$\leq 12\text{mm}$	$\leq 5\text{mm}$	$\leq 5\text{mm}$	$\leq 4\text{mm}$	$\leq 1.5 \cdot \Delta z_{\text{zoom}}(n-1)$	$\geq 30\text{mm}$
3-4GHz	$\leq 10\text{mm}$	$\leq 5\text{mm}$	$\leq 4\text{mm}$	$\leq 3\text{mm}$	$\leq 1.5 \cdot \Delta z_{\text{zoom}}(n-1)$	$\geq 28\text{mm}$
4-5GHz	$\leq 10\text{mm}$	$\leq 4\text{mm}$	$\leq 3\text{mm}$	$\leq 2.5\text{mm}$	$\leq 1.5 \cdot \Delta z_{\text{zoom}}(n-1)$	$\geq 25\text{mm}$
5-6GHz	$\leq 10\text{mm}$	$\leq 4\text{mm}$	$\leq 2\text{mm}$	$\leq 2\text{mm}$	$\leq 1.5 \cdot \Delta z_{\text{zoom}}(n-1)$	$\geq 22\text{mm}$

5.8. SAR Averaging Methods

The DASY5 software includes all numerical procedures necessary to evaluate the spatial peak SAR values. The base for the evaluation is a “cube” measurement in a volume of (30mm)³ (7x7x7 points). The maximum SAR value was averaged over the cube of tissue using interpolation and extrapolation.

The interpolation, extrapolation and maximum search routines within Dasy5 are all based on the modified Quadratic Shepard’s method.

The interpolation scheme combines a least-square fitted function method with a weighted average method. A trivariate 3-D / bivariate 2-D quadratic function is computed for each measurement point and fitted to neighbouring points by a least-square method. For the zoom scan, inverse distance weighting is incorporated to fit distant points more accurately. The interpolating function is finally calculated as a weighted average of the quadratics.

In the zoom scan, the interpolation function is used to extrapolate the Peak SAR from the deepest measurement points to the inner surface of the phantom.

6. MEASUREMENT UNCERTAINTY

6.1. Uncertainty for SAR Test

Uncertainty Budget of DASY for frequency range 300 MHz to 3 GHz

Uncertainty Component	Tol. (%)	Prob Dist.	Div	ci (1g)	ci.ui(%) (1g)	vi
Measurement System						
Probe Calibration	±5.9	N	1	1	±5.9	∞
Axial Isotropy	±4.7	R	$\sqrt{3}$	0.7	±1.9	∞
Hemispherical Isotropy	±9.6	R	$\sqrt{3}$	0.7	±3.9	∞
Boundary Effect	±1.0	R	$\sqrt{3}$	1	±0.6	∞
Linearity	±4.7	R	$\sqrt{3}$	1	±2.7	∞
System Detection Limits	±1.0	R	$\sqrt{3}$	1	±0.6	∞
Readout Electronics	±0.3	N	1	1	±0.3	∞
Response Time	±0.8	R	$\sqrt{3}$	1	±0.5	∞
Integration Time	±2.6	R	$\sqrt{3}$	1	±1.5	∞
RF Ambient Conditions - Noise	±3.0	R	$\sqrt{3}$	1	±1.7	∞
RF Ambient Conditions - Reflections	±3.0	R	$\sqrt{3}$	1	±1.7	∞
Probe Positioner Mechanical Tolerance	±0.4	R	$\sqrt{3}$	1	±0.2	∞
Probe Positioning with respect to Phantom Shell	±2.9	R	$\sqrt{3}$	1	±1.7	∞
Extrapolation, interpolation and Integration Algorithms for Max. SAR Evaluation	±1.0	R	$\sqrt{3}$	1	±0.6	∞
Test Sample Related						
Test Sample Positioning	±2.9	N	1	1	±2.9	145
Device Holder Uncertainty	±3.6	N	1	1	±3.6	5
Output Power Variation - SAR drift measurement	±5.0	R	$\sqrt{3}$	1	±2.9	∞
Phantom and Tissue Parameters						
Phantom Uncertainty (shape and thickness tolerances)	±4.0	R	$\sqrt{3}$	1	±2.3	∞
Conductivity Target - tolerance	±5.0	R	$\sqrt{3}$	0.43	±1.2	∞
Conductivity - measurement uncertainty	±2.5	N	1	0.43	±1.1	∞
Permittivity Target - tolerance	±5.0	R	$\sqrt{3}$	0.49	±1.4	∞
Permittivity - measurement uncertainty	±2.5	N	1	0.49	±1.2	5
Combined Standard Uncertainty					±10.7	387
Expanded STD Uncertainty					±21.4	

6.2. Uncertainty for System Validation

Uncertainty Component	Uncert. value	Prob. Dist.	Div.	(ci) (1g)	Std. Unc. (1g)	(vi) v_{eff}
Probe Calibration	±6.55 %	N	1	1	±6.55 %	1
Axial Isotropy	±4.7 %	R	$\sqrt{3}$	1	±2.7 %	1
Hemispherical Isotropy	±9.6 %	R	$\sqrt{3}$	0	±0 %	1
Boundary Effects	±1.0 %	R	$\sqrt{3}$	1	±0.6 %	1
Linearity	±4.7 %	R	$\sqrt{3}$	1	±2.7 %	1
System Detection Limits	±1.0 %	R	$\sqrt{3}$	1	±0.6 %	1
Modulation Response	±0 %	R	$\sqrt{3}$	1	±0 %	1
Readout Electronics	±0.3 %	N	1	1	±0.3 %	1
Response Time	±0 %	R	$\sqrt{3}$	1	±0 %	1
Integration Time	±0 %	R	$\sqrt{3}$	1	±0 %	1
RF Ambient Noise	±1.0 %	R	$\sqrt{3}$	1	±0.6 %	1
RF Ambient Reflections	±1.0 %	R	$\sqrt{3}$	1	±0.6 %	1
Probe Positioner	±0.8 %	R	$\sqrt{3}$	1	±0.5 %	1
Probe Positioning	±6.7 %	R	$\sqrt{3}$	1	±3.9 %	1
Max. SAR Eval.	±2.0 %	R	$\sqrt{3}$	1	±1.2 %	1
Dipole Related						
Deviation of exp. dipole	±5.5 %	R	$\sqrt{3}$	1	±3.2 %	1
Dipole Axis to Liquid Dist.	±2.0 %	R	$\sqrt{3}$	1	±1.2 %	1
Input power & SAR drift	±3.4 %	R	$\sqrt{3}$	1	±2.0 %	1
Phantom and Setup						
Phantom Uncertainty	±4.0 %	R	$\sqrt{3}$	1	±2.3 %	1
SAR correction	±1.9 %	R	$\sqrt{3}$	0.84	±0.9 %	1
Liquid Conductivity (meas.)	±2.5 %	N	1	0.71	±1.8 %	1
Liquid Permittivity (meas.)	±2.5 %	N	1	0.26	±0.7 %	1
Temp. unc. -Conductivity	±1.7 %	R	$\sqrt{3}$	0.71	±0.7 %	1
Temp. unc. -Permittivity	±0.3 %	R	$\sqrt{3}$	0.26	±0.0 %	∞
Combined Std. Uncertainty					±10.1 %	
Expanded STD Uncertainty					±20.1 %	

7. CONDUCTED TEST RESULTS

7.1. Conducted power measurements of GSM850

Band: GSM850	Burst Average Power (dBm)			Frame Average Power (dBm)		
Channel	128	190	251	128	190	251
Frequency (MHz)	824.2	836.6	848.8	824.2	836.6	848.8
GSM (CS)	32.63	32.52	32.61	23.44	23.33	23.42

7.2. Conducted power measurements of GSM1900

Band: GSM1900	Burst Average Power (dBm)			Frame Average Power (dBm)		
Channel	512	661	810	512	661	810
Frequency (MHz)	1850.2	1880	1909.8	1850.2	1880	1909.8
GSM (CS)	30.05	30.11	30.14	20.86	20.92	20.95

Remark: For GSM 1 timeslot, below duty cycle is considered and used to calculate the frame average power.

No. of timeslots	1
Duty Cycle	1:8.3
Time based avg. power compared to slotted avg. power	-9.19dB

8. SAR TEST RESULTS

Remark:

- 1) Per KDB447498 D01v05r02, all measurement SAR results are scaled to the maximum tune-up tolerance limit to demonstrate compliant.
- 2) Per KDB447498 D01v05r02, testing of other required channels within the operating mode of a frequency band is not required when the reported 1-g or 10-g SAR for the mid-band or highest output power channel is ≤ 0.8 W/kg or 2.0W/kg, for 1-g or 10-g respectively, when the transmission band is ≤ 100 MHz. When the maximum output power variation across the required test channels is $> 1/2$ dB, instead of the middle channel, the highest output power channel must be used.
- 3) Per KDB865664 D01v01r03, for each frequency band, repeated SAR measurement is required only when the measure SAR is ≥ 0.8 W/kg; if the deviation among the repeated measurement is $\leq 20\%$, and the measured SAR < 1.45 W/kg, only one repeated measurement is required.
- 4) Per KDB865664 D02v01r01, SAR plot is only required for the highest measured SAR in each exposure configuration, wireless mode and frequency band combination; plots are also required when the measured SAR is > 1.5 W/kg, or > 7.0 W/kg for occupational exposure. The published RF exposure KDB procedures may require additional plots; for example, to support SAR to peak location separation ratio test exclusion and/or volume scan plots-processing (refer to appendix B for details).

8.1. GSM850 SAR results

Distance 25mm

Band	Mode	Test Position	Ch.	Freq. (MHz)	Burst Average Power (dBm)	Tune-Up Limit (dBm)	Scaling Factor	Measured SAR (W/kg)	Reported SAR (W/kg)
GSM850	GSM Voice	Back Side Antenna horizontal	190	836.6	32.52	33	1.117	0.515	0.575

Remark:

- 1) Only GSM voice mode is supported by this EUT
- 2) The SAR test shall be performed at the high, middle and low frequency channels of each operating the SAR limit (<0.8 W/kg), testing at the high and low channels is optional.

8.2.PCS1900 SAR results

Band	Mode	Test Position	Ch.	Freq. (MHz)	Burst Average Power (dBm)	Tune-Up Limit (dBm)	Scaling Factor	Measured SAR (W/kg)	Reported SAR (W/kg)
PCS1900	GSM Voice	Back Side Antenna horizontal	661	1880.0	30.11	31	1.227	0.513	0.63

Remark:

- 1) Only GSM voice mode is supported by this EUT
- 2) The SAR test shall be performed at the high, middle and low frequency channels of each operating the SAR limit (<0.8 W/kg), testing at the high and low channels is optional.

8.3.Repeated SAR results

Remark:

1 According to KDB 865664 D01v01r3, for each frequency band, repeated SAR measurement is required only when the measured SAR is $\geq 0.8\text{W/kg}$.

2 KDB 865664 D01v01r3, if the deviation among the repeated measurement is $\leq 20\%$ and the measured SAR $< 1.45\text{W/kg}$, only one repeated measurement is required.

3 The variability measurement procedures should be applied to the tissue medium with the highest measured SAR, using the highest measured SAR configuration for that tissue-equivalent medium.

Band	Mode	Test Position	Ch.	Freq. (MHz)	Average Power (dBm)	Tune-Up Limit (dBm)	Scaling Factor	Measured SAR (W/kg)	Reported SAR (W/kg)	Ratio
--										
--										

Measured SAR of all frequency band are lower than 0.8W/kg , repeated SAR is not required .

9. SIMULTANEOUS TRANSMISSION SAR ANALYSIS

Remark:

This product is not applicable in Simultaneous Transmission.

APPENDIX A: SYSTEM CHECKING SCANS

SystemPerformanceCheck-D835 for Body

Date: 2016.01.25.

DUT: Dipole 835 MHz D835V2; Type: D835V2 SN:4d141;

Communication System: CW; Communication System Band: D835 (835.0 MHz); Frequency: 835 MHz;Duty Cycle: 1:1

Medium parameters used: $f = 835$ MHz; $\sigma = 0.98$ mho/m; $\epsilon_r = 55.0$; $\rho = 1000$ kg/m³

Phantom section: Flat Section

Measurement Standard: DASY5 (IEEE/IEC/ANSI C63.19-2007)

DASY5 Configuration:

- Probe: EX3DV4 - SN3881; ConvF(9.45, 9.45, 9.45); Calibrated: 2015.07.24.;
- Sensor-Surface: 4mm (Mechanical Surface Detection)
- Electronics: DAE4 Sn876; Calibrated: 2015.03.09.
- Phantom: SAM 1; Type: QD000P40CC; Serial: TP:1504
- Measurement SW: DASY52, Version 52.8 (2); SEMCAD X Version 14.6.6 (6824)

Body/Dipole835/Area Scan (61x131x1): Interpolated grid: dx=1.500 mm, dy=1.500 mm

Reference Value = 55.902 V/m; Power Drift = -0.52 dB

Fast SAR: SAR(1 g) = 2.55 mW/g; SAR(10 g) = 1.67 mW/g

Maximum value of SAR (interpolated) = 2.76 W/kg

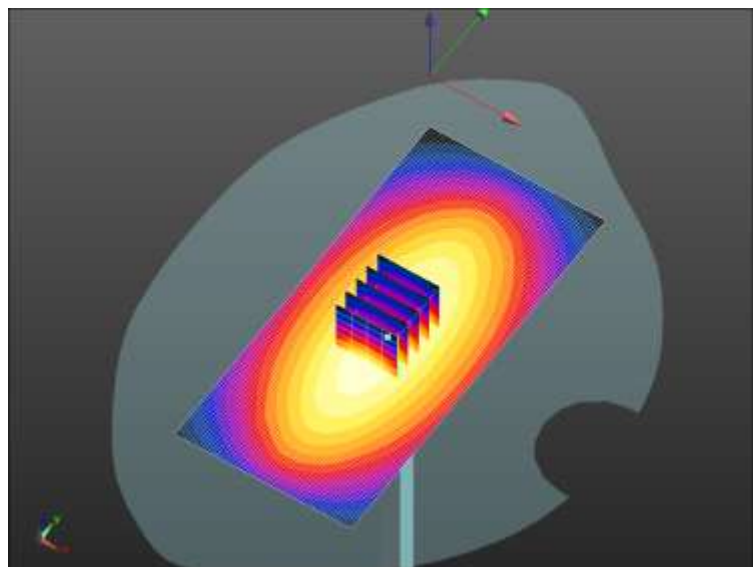
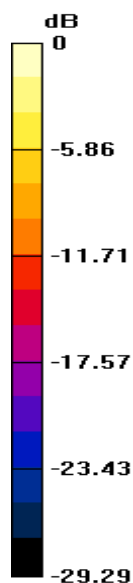
Body/Dipole835/Zoom Scan (5x5x7)/Cube 0: Measurement grid: dx=8mm, dy=8mm, dz=5mm

Reference Value = 55.902 V/m; Power Drift = -0.52 dB

Peak SAR (extrapolated) = 3.791 mW/g

SAR(1 g) = 2.48 mW/g; SAR(10 g) = 1.61 mW/g

Maximum value of SAR (measured) = 2.69 W/kg



0 dB = 2.76 W/kg = 8.82 dB W/kg

SystemPerformanceCheck-D1900 for Body

Date: 2016.01.26.

DUT: Dipole 1900 MHz D1900V2; Type: D1900V2 SN:5d162;

Communication System: CW; Communication System Band: D1900 (1900.0 MHz); Frequency: 1900 MHz;Duty Cycle: 1:1

Medium parameters used: $f = 1900$ MHz; $\sigma = 1.53$ mho/m; $\epsilon_r = 53.1$; $\rho = 1000$ kg/m³

Phantom section: Flat Section

Measurement Standard: DASY5 (IEEE/IEC/ANSI C63.19-2007)

DASY5 Configuration:

- Probe: EX3DV4 - SN3881; ConvF(7.6, 7.6, 7.6); Calibrated: 2015.07.24.;
- Sensor-Surface: 4mm (Mechanical Surface Detection)
- Electronics: DAE4 Sn876; Calibrated: 2015.03.09.
- Phantom: SAM 1; Type: QD000P40CC; Serial: TP:1504
- Measurement SW: DASY52, Version 52.8 (2); SEMCAD X Version 14.6.6 (6824)

Body/Dipole1900/Area Scan (61x121x1): Interpolated grid: dx=1.500 mm, dy=1.500 mm

Reference Value = 87.333 V/m; Power Drift = 0.06 dB

Fast SAR: SAR(1 g) = 11 mW/g; SAR(10 g) = 5.38 mW/g

Maximum value of SAR (interpolated) = 13.0 W/kg

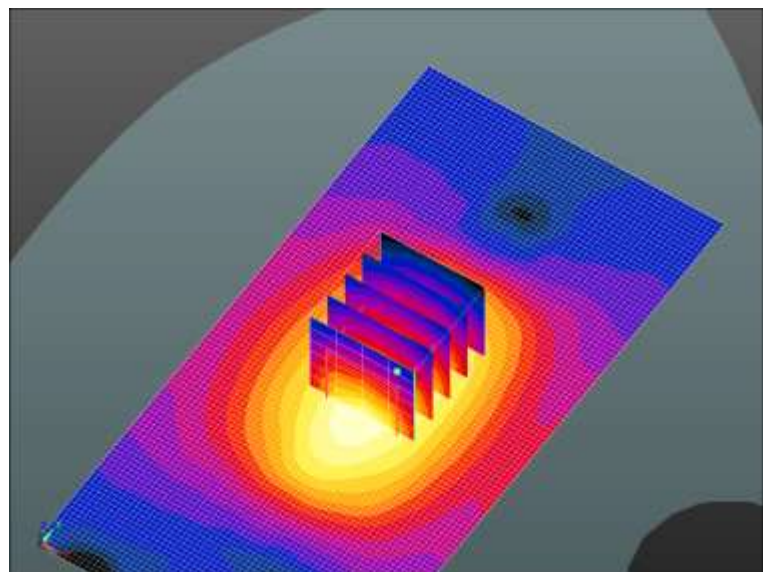
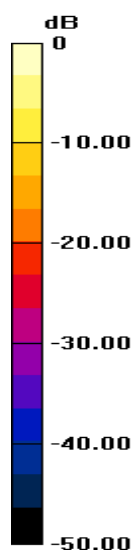
Body/Dipole1900/Zoom Scan (5x5x7)/Cube 0: Measurement grid: dx=8mm, dy=8mm, dz=5mm

Reference Value = 87.333 V/m; Power Drift = 0.06 dB

Peak SAR (extrapolated) = 21.434 mW/g

SAR(1 g) = 11.1 mW/g; SAR(10 g) = 5.54 mW/g

Maximum value of SAR (measured) = 12.7 W/kg



0 dB = 13.0 W/kg = 22.31 dB W/kg

APPENDIX B: System Validation

Per KDB 865664 D02v01, SAR system validation status should be documented to confirm measurement accuracy. SAR measurement systems are validated according to procedures in KDB 865664 D01v01r3. The validation status is documented according to the validation date(s), measurement frequencies, SAR probe and tissue dielectric parameters. When multiple SAR system is used, the validation status of each SAR system is needed to be documented separately according to the associated system components.

A tabulated summary of the system validation status including the validation date(s), measurement frequencies, SAR probe and tissue dielectric parameters are shown as below.

Date	Probe S/N	Tested Freq MHz	Tissue	CW			Mod. Validation		
				Sensitivity	Linearity	Isotropy	Mod	Duty Factor	Peak to Average Power Ratio
2015.09.21	3881	1900	body	pass	pass	Pass	GMSK	pass	N/A
--	--	--	--	--	--	--	--	--	--
--	--	--	--	--	--	--	--	--	--

APPENDIX C: MEASUREMENT SCANS

Date: 2016.01.25.

F112G GSM850 Back Side Antenna Horizontal 25mm

Medium: MSL900

Communication System: Generic GSM; Communication System Band: GSM 850 (824.0 – 849.0 MHz); Frequency: 836.6 MHz; Duty Cycle: 1:8.3

Medium parameters used (interpolated): $f = 836.6$ MHz; $\sigma = 0.98$ mho/m; $\epsilon_r = 55.0$; $\rho = 1000$ kg/m³

Phantom section: Flat Section

Measurement Standard: DASYS (IEEE/IEC/ANSI C63.19-2007)

DASY5 Configuration: Probe: EX3DV4 – SN3881; ConvF(9.45, 9.45, 9.45); Calibrated: 2015.07.24.; Electronics: DAE4 Sn876; Calibrated: 2015.03.09.

GSM 850_Back Side Antenna horizontal 25mm/Mid 2/Area Scan (61x61x1): Interpolated grid:
dx=1.500 mm, dy=1.500 mm

Reference Value = 13.371 V/m; Power Drift = -0.11 dB

Fast SAR: SAR(1 g) = 0.522 mW/g; SAR(10 g) = 0.355 mW/g

Maximum value of SAR (interpolated) = 0.556 W/kg

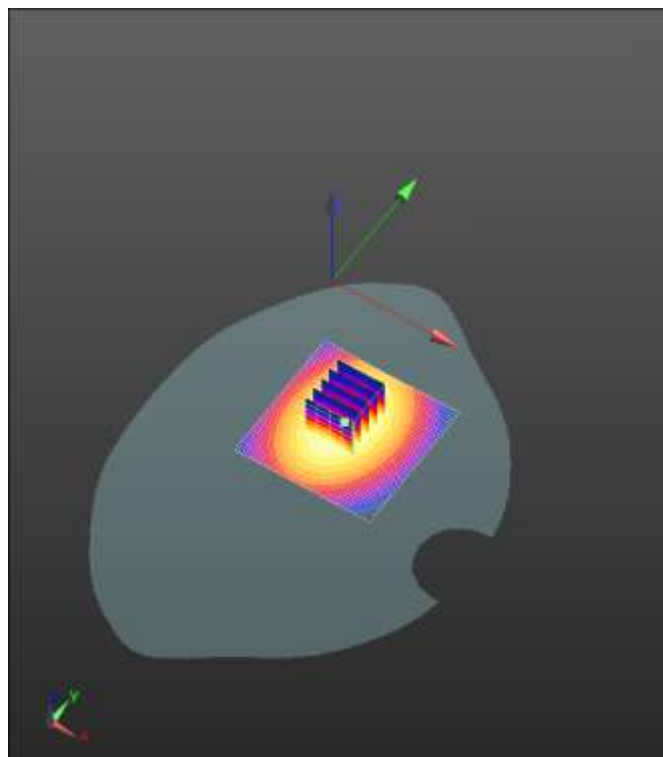
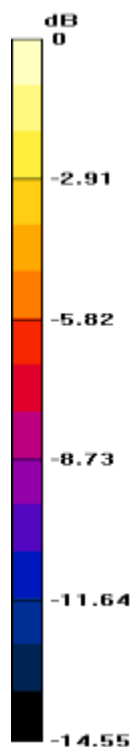
GSM 850_Back Side Antenna horizontal 25mm/Mid 2/Zoom Scan (5x5x7)/Cube 0: Measurement grid:
dx=8mm, dy=8mm, dz=5mm

Reference Value = 13.371 V/m; Power Drift = -0.11 dB

Peak SAR (extrapolated) = 0.707 mW/g

SAR(1 g) = 0.515 mW/g; SAR(10 g) = 0.356 mW/g

Maximum value of SAR (measured) = 0.548 W/kg



0 dB = 0.556 W/kg = -5.09 dB W/kg

Date: 2016.01.26.

F112G GSM1900D Back Side Antenna Horizontal 25mm

Medium: MSL1900

Communication System: Generic GSM; Communication System Band: PCS 1900 (1850.0 – 1910.0 MHz); Frequency: 1880 MHz; Duty Cycle: 1:8.3

Medium parameters used: $f = 1880$ MHz; $\sigma = 1.53$ mho/m; $\epsilon_r = 53.1$; $\rho = 1000$ kg/m³

Phantom section: Flat Section

Measurement Standard: DASYS (IEEE/IEC/ANSI C63.19-2007)

DASY5 Configuration: Probe: EX3DV4 – SN3881; ConvF(7.6, 7.6, 7.6); Calibrated: 2015.07.24.; Electronics: DAE4 Sn876; Calibrated: 2015.03.09.

1900_GSM1900/GSM1900 Back Mid/Area Scan (61x61x1): Interpolated grid: dx=1.500 mm, dy=1.500 mm

Reference Value = 11.406 V/m; Power Drift = 0.03 dB

Fast SAR: SAR(1 g) = 0.502 mW/g; SAR(10 g) = 0.283 mW/g

Maximum value of SAR (interpolated) = 0.562 W/kg

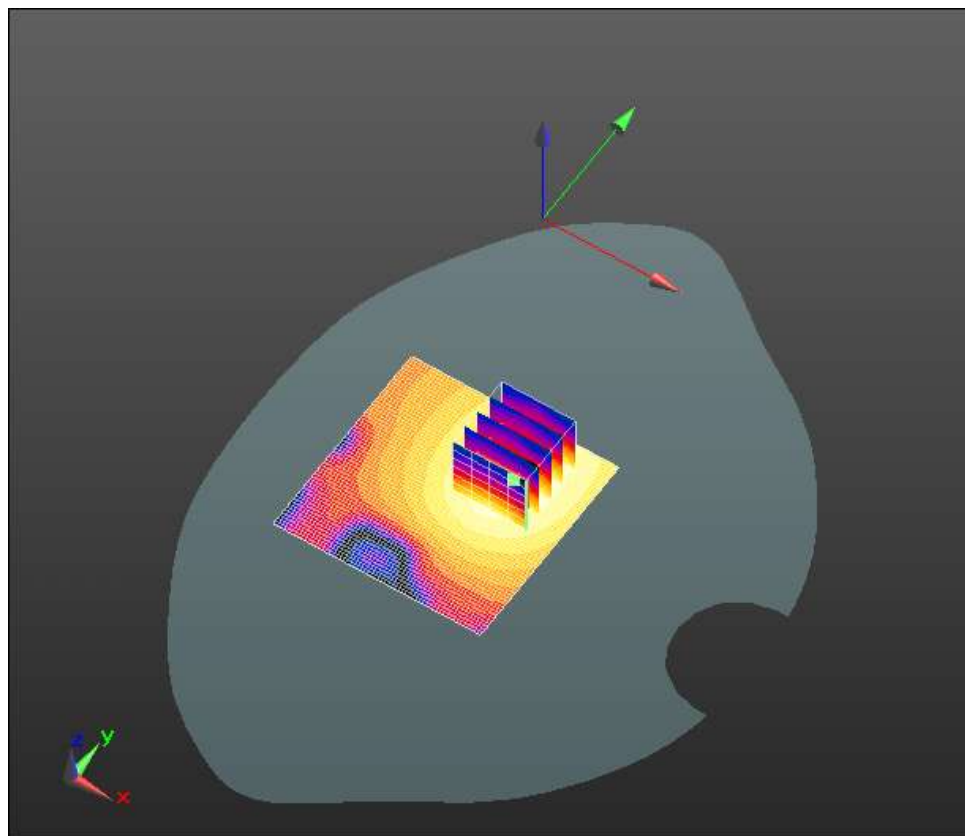
1900_GSM1900/GSM1900 Back Mid/Zoom Scan (5x5x7)/Cube 0: Measurement grid: dx=8mm, dy=8mm, dz=5mm

Reference Value = 11.406 V/m; Power Drift = 0.03 dB

Peak SAR (extrapolated) = 1.140 mW/g

SAR(1 g) = 0.513 mW/g; SAR(10 g) = 0.251 mW/g

Maximum value of SAR (measured) = 0.552 W/kg



0 dB = 0.562 W/kg = -5.00 dB W/kg

APPENDIX D: RELEVANT PAGES FROM PROBE CALIBRATION REPORT(S)



Add: No.51 Xueyuan Road, Haidian District, Beijing, 100191, China
Tel: +86-10-62304633-2218 Fax: +86-10-62304633-2209
E-mail: cnl@chinatl.com <http://www.chinatl.cn>

Probe EX3DV4

SN: 3881

Calibrated: July 24, 2015

Calibrated for DASY/EASY Systems

(Note: non-compatible with DASY2 system!)



In Collaboration with
s p e a g
CALIBRATION LABORATORY

Add: No.51 Xueyuan Road, Haidian District, Beijing, 100191, China
Tel: +86-10-62304633-2218 Fax: +86-10-62304633-2209
E-mail: cnl@chinattl.com <http://www.chinattl.cn>

DASY/EASY – Parameters of Probe: EX3DV4 – SN: 3881

Basic Calibration Parameters

	Sensor X	Sensor Y	Sensor Z	Unc (k=2)
Norm($\mu\text{V}/(\text{V}/\text{m})^2$) ^A	0.18	0.38	0.50	±10.8%
DCP(mV) ^B	95.9	104.3	102.3	

Modulation Calibration Parameters

UID	Communication System Name		A dB	B dB· μV	C	D dB	VR mV	Unc ^E (k=2)
0	CW	X	0.0	0.0	1.0	0.00	98.5	±2.9%
		Y	0.0	0.0	1.0		172.5	
		Z	0.0	0.0	1.0		195.3	

The reported uncertainty of measurement is stated as the standard uncertainty of Measurement multiplied by the coverage factor k=2, which for a normal distribution Corresponds to a coverage probability of approximately 95%.

^A The uncertainties of Norm X, Y, Z do not affect the E²-field uncertainty inside TSL (see Page 5 and Page 6).

^B Numerical linearization parameter: uncertainty not required

^E Uncertainty is determined using the max. deviation from linear response applying rectangular distribution and is expressed for the square of the field value.



In Collaboration with
s p e a g
 CALIBRATION LABORATORY

Add: No.51 Xueyuan Road, Haidian District, Beijing, 100191, China
 Tel: +86-10-62304633-2218 Fax: +86-10-62304633-2209
 E-mail: entl@chinattl.com <http://www.chinattl.cn>

DASY/EASY – Parameters of Probe: EX3DV4 – SN: 3881

Calibration Parameter Determined in Head Tissue Simulating Media

f [MHz] ^c	Relative Permittivity ^e	Conductivity (S/m) ^f	ConvF X	ConvF Y	ConvF Z	Alpha ^g	Depth ^g (mm)	Unct. (k=2)
835	41.5	0.90	9.66	9.66	9.66	0.16	1.26	± 12%
1900	40.0	1.40	7.96	7.96	7.96	0.18	1.34	± 12%

^c Frequency validity of ±100MHz only applies for DASY v4.4 and higher (Page 2), else it is restricted to ±50MHz. The uncertainty is the RSS of ConvF uncertainty at calibration frequency and the uncertainty for the indicated frequency band.

^e At frequency below 3 GHz, the validity of tissue parameters (ϵ and σ) can be relaxed to ±10% if liquid compensation formula is applied to measured SAR values. At frequencies above 3 GHz, the validity of tissue parameters (ϵ and σ) is restricted to ±5%. The uncertainty is the RSS of the ConvF uncertainty for indicated target tissue parameters.

^g Alpha/Depth are determined during calibration. SPEAG warrants that the remaining deviation due to the boundary effect after compensation is always less than ± 1% for frequencies below 3 GHz and below ± 2% for the frequencies between 3-6 GHz at any distance larger than half the probe tip diameter from the boundary.



In Collaboration with

s p e a g
CALIBRATION LABORATORY

Add: No.51 Xueyuan Road, Haidian District, Beijing, 100191, China
Tel: +86-10-62304633-2218 Fax: +86-10-62304633-2209
E-mail: ttl@chinaatl.com <http://www.chinaatl.cn>

DASY/EASY – Parameters of Probe: EX3DV4 – SN: 3881

Calibration Parameter Determined in Body Tissue Simulating Media

f [MHz] ^c	Relative Permittivity ^e	Conductivity (S/m) ^f	ConvF X	ConvF Y	ConvF Z	Alpha ^g	Depth ^g (mm)	Unct. (k=2)
835	55.2	0.97	9.45	9.45	9.45	0.16	1.39	± 12%
1900	53.3	1.52	7.60	7.60	7.60	0.15	1.60	± 12%

^c Frequency validity of ±100MHz only applies for DASY v4.4 and higher (Page 2), else it is restricted to ±50MHz. The uncertainty is the RSS of ConvF uncertainty at calibration frequency and the uncertainty for the indicated frequency band.

^e At frequency below 3 GHz, the validity of tissue parameters (ϵ and σ) can be relaxed to ±10% if liquid compensation formula is applied to measured SAR values. At frequencies above 3 GHz, the validity of tissue parameters (ϵ and σ) is restricted to ±5%. The uncertainty is the RSS of the ConvF uncertainty for indicated target tissue parameters.

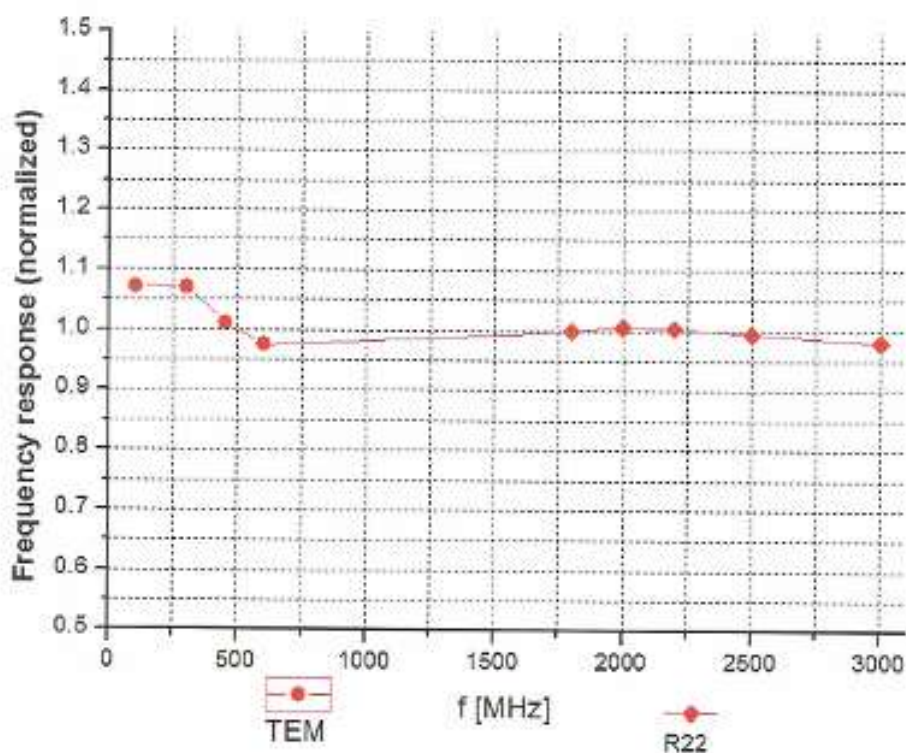
^g Alpha/Depth are determined during calibration. SPEAG warrants that the remaining deviation due to the boundary effect after compensation is always less than ± 1% for frequencies below 3 GHz and below ± 2% for the frequencies between 3-6 GHz at any distance larger than half the probe tip diameter from the boundary.



In Collaboration with
s p e a g
CALIBRATION LABORATORY

Add: No.51 Xueyuan Road, Haidian District, Beijing, 100191, China
Tel: +86-10-62304633-2218 Fax: +86-10-62304633-2209
E-mail: cttl@china.ttl.com [Http://www.china.ttl.cn](http://www.china.ttl.cn)

Frequency Response of E-Field (TEM-Cell: ifi110 EXX, Waveguide: R22)



Uncertainty of Frequency Response of E-field: $\pm 7.5\%$ ($k=2$)

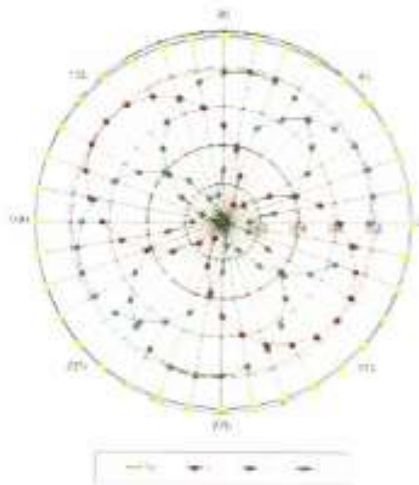


In Collaboration with
s p e a g
 CALIBRATION LABORATORY

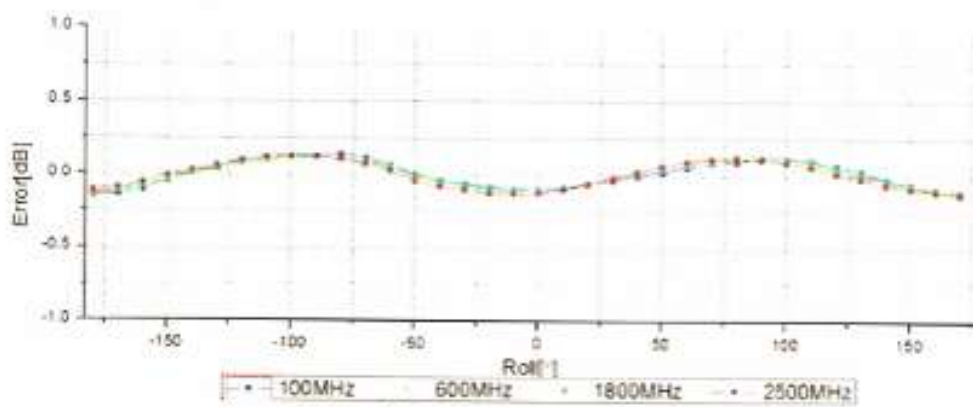
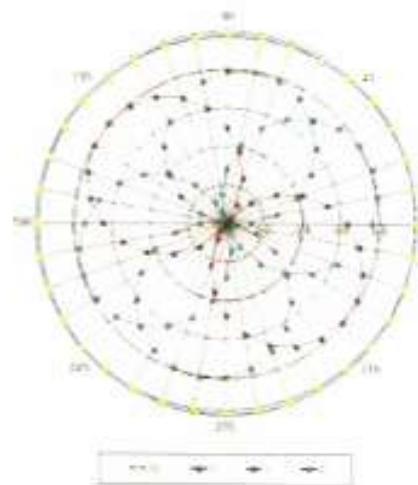
Add: No.51 Xueyuan Road, Haidian District, Beijing, 100191, China
 Tel: +86-10-62304633-2218 Fax: +86-10-62304633-2209
 E-mail: ctl@chinatl.com <http://www.chinatl.cn>

Receiving Pattern (Φ), $\theta=0^\circ$

f=600 MHz, TEM



f=1800 MHz, R22



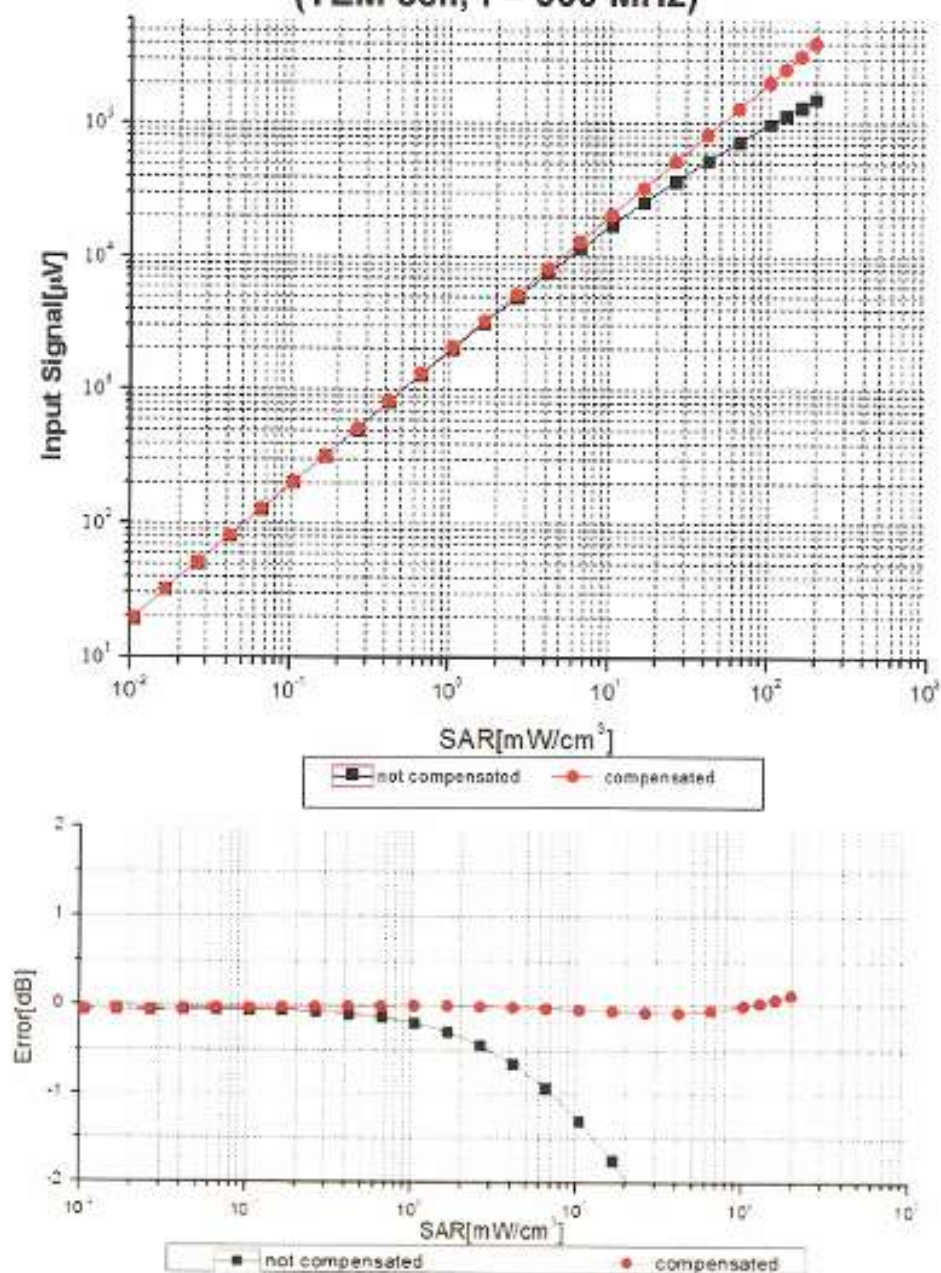
Uncertainty of Axial Isotropy Assessment: $\pm 0.9\%$ ($k=2$)



In Collaboration with
s p e a g
CALIBRATION LABORATORY

Add: No.51 Xueyuan Road, Haidian District, Beijing, 100191, China
Tel: +86-10-62304633-2218 Fax: +86-10-62304633-2209
E-mail: cttl@chinantl.com [Http://www.chinantl.cn](http://www.chinantl.cn)

Dynamic Range f(SAR_{head}) (TEM cell, f = 900 MHz)



Uncertainty of Linearity Assessment: $\pm 0.9\%$ (k=2)

Certificate No: Z15-97095

Page 9 of 11



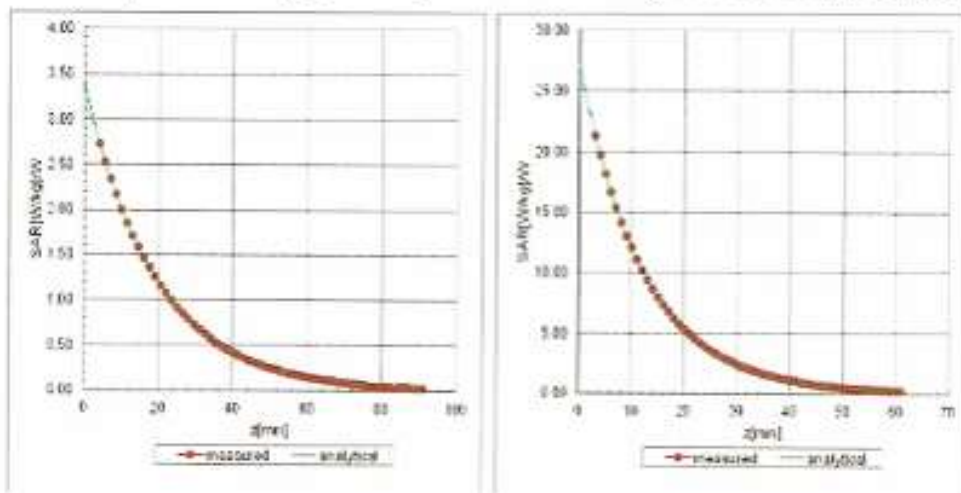
In Collaboration with
s p e a g
CALIBRATION LABORATORY

Add: No.51 Xueyuan Road, Haidian District, Beijing, 100191, China
Tel: +86-10-62504633-2218 Fax: +86-10-62504633-2209
E-mail: cctl@chinattl.com <http://www.chinattl.co>

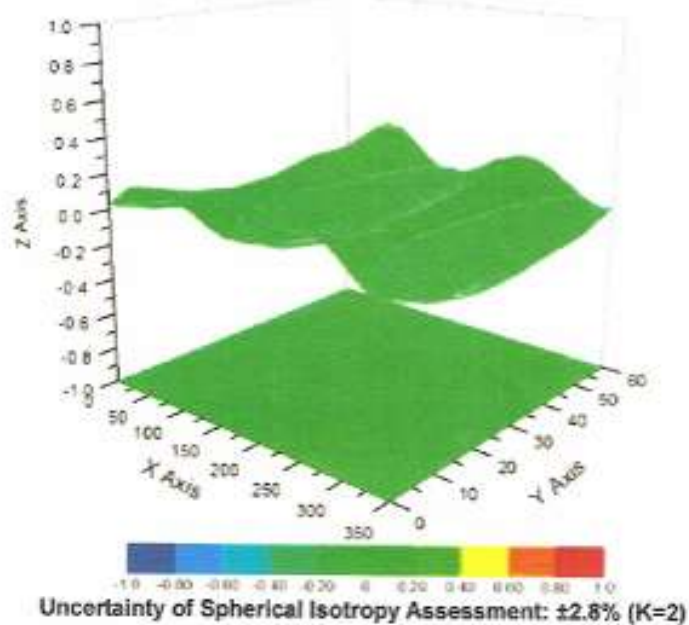
Conversion Factor Assessment

f=835 MHz, WGLS R9(H_convF)

f=1900 MHz, WGLS R22(H_convF)



Deviation from Isotropy in Liquid





Add: No.51 Xueyuan Road, Haidian District, Beijing, 100191, China
Tel: +86-10-62304633-2218 Fax: +86-10-62304633-2209
E-mail: cnl@chinattl.com [Http://www.chinattl.cn](http://www.chinattl.cn)

DASY/EASY – Parameters of Probe: EX3DV4 – SN: 3881

Other Probe Parameters

Sensor Arrangement	Triangular
Connector Angle (°)	170.2
Mechanical Surface Detection Mode	enabled
Optical Surface Detection Mode	disable
Probe Overall Length	337mm
Probe Body Diameter	10mm
Tip Length	9mm
Tip Diameter	2.5mm
Probe Tip to Sensor X Calibration Point	1mm
Probe Tip to Sensor Y Calibration Point	1mm
Probe Tip to Sensor Z Calibration Point	1mm
Recommended Measurement Distance from Surface	1.4mm

**APPENDIX E: RELEVANT PAGES FROM DIPOLE VALIDATION KIT
REPORT(S)**



In Collaboration with
s p e a g
CALIBRATION LABORATORY

Add: No.51 Xueyuan Road, Haidian District, Beijing, 100191, China
Tel: +86-10-62304633-2079 Fax: +86-10-62304633-2504
E-mail: cttl@chinattl.com [Http://www.chinattl.cn](http://www.chinattl.cn)



CALIBRATION
No. L0570

Client

SMQ

Certificate No: Z15-97116

CALIBRATION CERTIFICATE

Object D835V2 - SN: 4d141

Calibration Procedure(s) FD-Z11-2-003-01
Calibration Procedures for dipole validation kits

Calibration date: September 24, 2015

This calibration Certificate documents the traceability to national standards, which realize the physical units of measurements(SI). The measurements and the uncertainties with confidence probability are given on the following pages and are part of the certificate.

All calibrations have been conducted in the closed laboratory facility: environment temperature(22±3)°C and humidity<70%.

Calibration Equipment used (M&TE critical for calibration)

Primary Standards	ID #	Cal Date(Calibrated by, Certificate No.)	Scheduled Calibration
Power Meter NRP2	101919	01-Jul-15 (CTTL, No.J15X04266)	Jun-16
Power sensor NRP-Z91	101547	01-Jul-15 (CTTL, No.J15X04266)	Jun-16
Reference Probe EX3DV4	SN 3846	24-Sep-14(SPEAG,No.EX3-3846_Sep14)	Sep-15
DAE4	SN 910	16-Jun-15(SPEAG,No.DAE4-910_Jun15)	Jun-16
Secondary Standards	ID #	Cal Date(Calibrated by, Certificate No.)	Scheduled Calibration
Signal Generator E4438C	MY49071430	02-Feb-15 (CTTL, No.J15X00729)	Feb-16
Network Analyzer E5071C	MY46110673	03-Feb-15 (CTTL, No.J15X00728)	Feb-16

	Name	Function	Signature
Calibrated by:	Zhao Jing	SAR Test Engineer	
Reviewed by:	Qi Dianyuan	SAR Project Leader	
Approved by:	Lu Bingsong	Deputy Director of the laboratory	

Issued: September 29, 2015

This calibration certificate shall not be reproduced except in full without written approval of the laboratory.

Certificate No: Z15-97116

Page 1 of 8



In Collaboration with
s p e a g
CALIBRATION LABORATORY

Add: No.51 Xueyuan Road, Haidian District, Beijing, 100191, China
Tel: +86-10-62304633-2079 Fax: +86-10-62304633-2504
E-mail: ctl@chinattl.com [Http://www.chinattl.cn](http://www.chinattl.cn)

Glossary:

TSL	tissue simulating liquid
ConvF	sensitivity in TSL / NORM _{x,y,z}
N/A	not applicable or not measured

Calibration is Performed According to the Following Standards:

- IEEE Std 1528-2013, "IEEE Recommended Practice for Determining the Peak Spatial-Averaged Specific Absorption Rate (SAR) in the Human Head from Wireless Communications Devices: Measurement Techniques", June 2013
- IEC 62209-1, "Procedure to measure the Specific Absorption Rate (SAR) For hand-held devices used in close proximity to the ear (frequency range of 300MHz to 3GHz)", February 2005
- KDB865664, SAR Measurement Requirements for 100 MHz to 6 GHz

Additional Documentation:

- DASY4/5 System Handbook

Methods Applied and Interpretation of Parameters:

- Measurement Conditions:** Further details are available from the Validation Report at the end of the certificate. All figures stated in the certificate are valid at the frequency indicated.
- Antenna Parameters with TSL:** The dipole is mounted with the spacer to position its feed point exactly below the center marking of the flat phantom section, with the arms oriented parallel to the body axis.
- Feed Point Impedance and Return Loss:** These parameters are measured with the dipole positioned under the liquid filled phantom. The impedance stated is transformed from the measurement at the SMA connector to the feed point. The Return Loss ensures low reflected power. No uncertainty required.
- Electrical Delay:** One-way delay between the SMA connector and the antenna feed point. No uncertainty required.
- SAR measured:** SAR measured at the stated antenna input power.
- SAR normalized:** SAR as measured, normalized to an input power of 1 W at the antenna connector.
- SAR for nominal TSL parameters:** The measured TSL parameters are used to calculate the nominal SAR result.

The reported uncertainty of measurement is stated as the standard uncertainty of Measurement multiplied by the coverage factor $k=2$, which for a normal distribution Corresponds to a coverage probability of approximately 95%.



In Collaboration with
s p e a g
CALIBRATION LABORATORY

Add: No.51 Xueyuan Road, Haidian District, Beijing, 100191, China
Tel: +86-10-62304633-2079 Fax: +86-10-62304633-2504
E-mail: cttl@chinatl.com Http://www.chinatl.cn

Measurement Conditions

DASY system configuration, as far as not given on page 1.

DASY Version	DASY52	52.8.8.1222
Extrapolation	Advanced Extrapolation	
Phantom	Triple Flat Phantom 5.1C	
Distance Dipole Center - TSL	15 mm	with Spacer
Zoom Scan Resolution	dx, dy, dz = 5 mm	
Frequency	835 MHz \pm 1 MHz	

Head TSL parameters

The following parameters and calculations were applied.

	Temperature	Permittivity	Conductivity
Nominal Head TSL parameters	22.0 °C	41.5	0.90 mho/m
Measured Head TSL parameters	(22.0 \pm 0.2) °C	42.0 \pm 6 %	0.89 mho/m \pm 6 %
Head TSL temperature change during test	<1.0 °C	----	----

SAR result with Head TSL

SAR averaged over 1 cm^3 (1 g) of Head TSL	Condition	
SAR measured	250 mW input power	2.33 mW / g
SAR for nominal Head TSL parameters	normalized to 1W	9.45 mW /g \pm 20.8 % (k=2)
SAR averaged over 10 cm^3 (10 g) of Head TSL	Condition	
SAR measured	250 mW input power	1.51 mW / g
SAR for nominal Head TSL parameters	normalized to 1W	6.11 mW /g \pm 20.4 % (k=2)

Body TSL parameters

The following parameters and calculations were applied.

	Temperature	Permittivity	Conductivity
Nominal Body TSL parameters	22.0 °C	55.2	0.97 mho/m
Measured Body TSL parameters	(22.0 \pm 0.2) °C	56.0 \pm 6 %	0.98 mho/m \pm 6 %
Body TSL temperature change during test	<1.0 °C	----	----

SAR result with Body TSL

SAR averaged over 1 cm^3 (1 g) of Body TSL	Condition	
SAR measured	250 mW input power	2.39 mW / g
SAR for nominal Body TSL parameters	normalized to 1W	9.51 mW /g \pm 20.8 % (k=2)
SAR averaged over 10 cm^3 (10 g) of Body TSL	Condition	
SAR measured	250 mW input power	1.57 mW / g
SAR for nominal Body TSL parameters	normalized to 1W	6.25 mW /g \pm 20.4 % (k=2)



In Collaboration with
s p e a g
CALIBRATION LABORATORY

Add: No.51 Xueyuan Road, Haidian District, Beijing, 100191, China
Tel: +86-10-62304633-2079 Fax: +86-10-62304633-2504
E-mail: ctt5@chinaatl.com Http://www.chinaatl.cn

Appendix

Antenna Parameters with Head TSL

Impedance, transformed to feed point	48.2Ω- 4.86jΩ
Return Loss	- 25.9dB

Antenna Parameters with Body TSL

Impedance, transformed to feed point	45.7Ω- 5.94jΩ
Return Loss	- 22.3dB

General Antenna Parameters and Design

Electrical Delay (one direction)	1.441 ns
----------------------------------	----------

After long term use with 100W radiated power, only a slight warming of the dipole near the feedpoint can be measured.

The dipole is made of standard semirigid coaxial cable. The center conductor of the feeding line is directly connected to the second arm of the dipole. The antenna is therefore short-circuited for DC-signals. On some of the dipoles, small end caps are added to the dipole arms in order to improve matching when loaded according to the position as explained in the "Measurement Conditions" paragraph. The SAR data are not affected by this change. The overall dipole length is still according to the Standard.
No excessive force must be applied to the dipole arms, because they might bend or the soldered connections near the feedpoint may be damaged.

Additional EUT Data

Manufactured by	SPEAG
-----------------	-------



In Collaboration with
s p e a g
CALIBRATION LABORATORY

Add: No.51 Xucyuan Road, Haidian District, Beijing, 100191, China
Tel: +86-10-62304633-2079 Fax: +86-10-62304633-2504
E-mail: ctll@chinaftl.com Http://www.chinactl.cn

DASY5 Validation Report for Head TSL

Date: 09.18.2015

Test Laboratory: CTTL, Beijing, China

DUT: Dipole 835 MHz; Type: D835V2; Serial: D835V2 - SN: 4d141

Communication System: UID 0, CW; Frequency: 835 MHz; Duty Cycle: 1:1

Medium parameters used: $f = 835 \text{ MHz}$; $\sigma = 0.886 \text{ S/m}$; $\epsilon_r = 41.95$; $\rho = 1000 \text{ kg/m}^3$

Phantom section: Left Section

Measurement Standard: DASY5 (IEEE/IEC/ANSI C63.19-2007)

DASY5 Configuration:

- Probe: EX3DV4 - SN3846; ConvF(9.18, 9.18, 9.18); Calibrated: 9/24/2014;
- Sensor-Surface: 2mm (Mechanical Surface Detection)
- Electronics: DAE4 Sn910; Calibrated: 6/16/2015
- Phantom: Triple Flat Phantom 5.1C; Type: QD 000 P51 CA; Serial: 1161/I
- Measurement SW: DASY52, Version 52.8 (8); SEMCAD X Version 14.6.10 (7331)

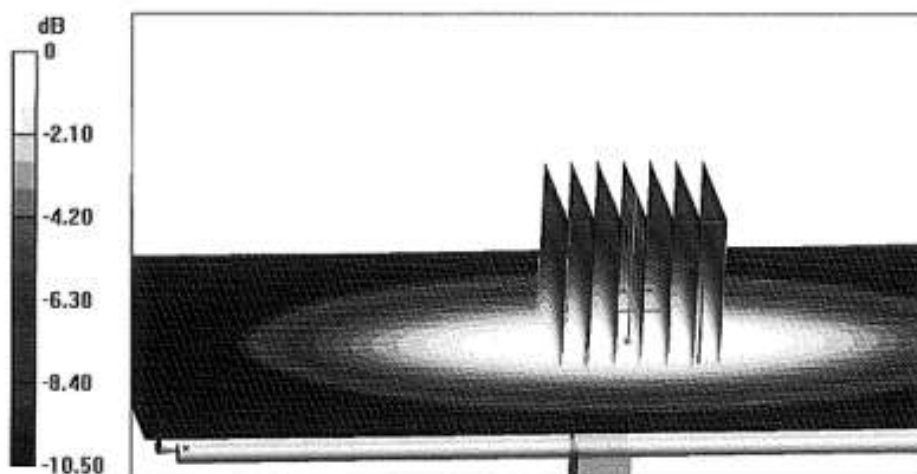
Dipole Calibration/Zoom Scan (7x7x7) (7x7x7)/Cube 0: Measurement grid: $dx=5\text{mm}$, $dy=5\text{mm}$, $dz=5\text{mm}$

Reference Value = 59.07 V/m; Power Drift = -0.06 dB

Peak SAR (extrapolated) = 3.48 W/kg

SAR(1 g) = 2.33 W/kg; SAR(10 g) = 1.51 W/kg

Maximum value of SAR (measured) = 2.95 W/kg



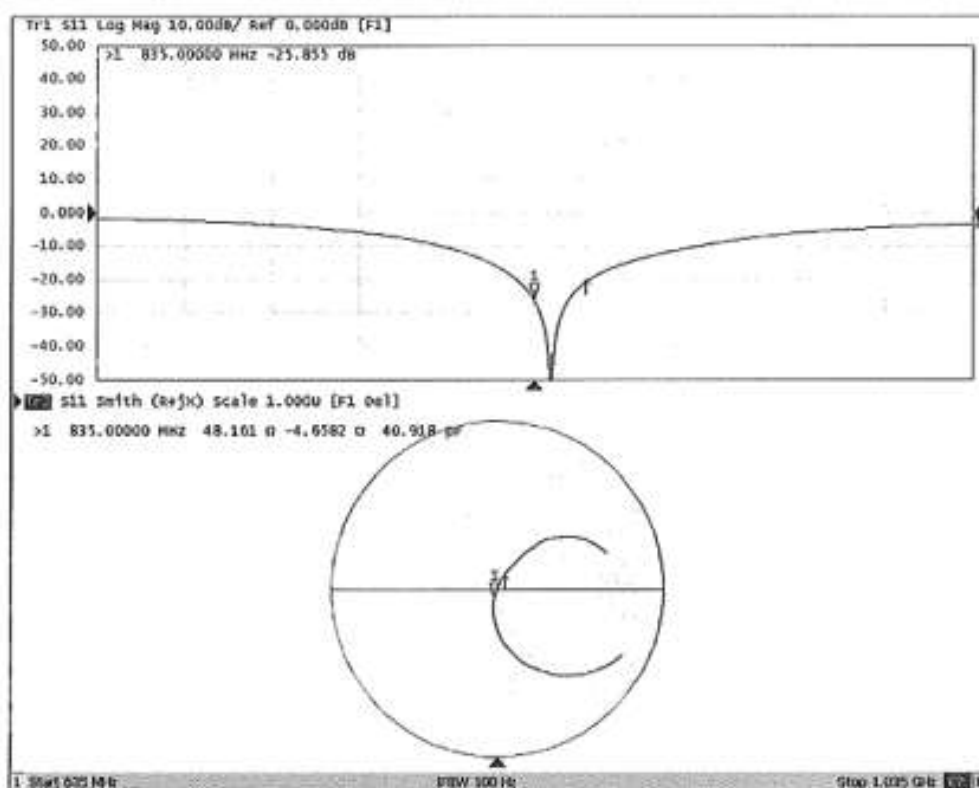
0 dB = 2.95 W/kg = 4.70 dBW/kg



In Collaboration with
s p e a g
 CALIBRATION LABORATORY

Add: No.51 Xueyuan Road, Haidian District, Beijing, 100191, China
 Tel: +86-10-62304633-2079 Fax: +86-10-62304633-2504
 E-mail: ttl@chinatitl.com Http://www.chinatitl.cn

Impedance Measurement Plot for Head TSL





In Collaboration with
s p e a g
CALIBRATION LABORATORY

Add: No.51 Xueyuan Road, Haidian District, Beijing, 100191, China
Tel: +86-10-62304633-2079 Fax: +86-10-62304633-2504
E-mail: cttl@chinattl.com Http://www.chinattl.cn

DASY5 Validation Report for Body TSL

Date: 09.18.2015

Test Laboratory: CTTL, Beijing, China

DUT: Dipole 835 MHz; Type: D835V2; Serial: D835V2 - SN: 4d141

Communication System: UTD 0, CW; Frequency: 835 MHz; Duty Cycle: 1:1

Medium parameters used: $f = 835$ MHz; $\sigma = 0.98$ S/m; $\epsilon_r = 55.99$; $\rho = 1000$ kg/m³

Phantom section: Right Section

Measurement Standard: DASY5 (IEEE/IEC/ANSI C63.19-2007)

DASY5 Configuration:

- Probe: EX3DV4 - SN3846; ConvF(9.09,9.09, 9.09); Calibrated: 9/24/2014;
- Sensor-Surface: 2mm (Mechanical Surface Detection)
- Electronics: DAE4 Sn910; Calibrated: 6/16/2015
- Phantom: Triple Flat Phantom 5.1C; Type: QD 000 P51 CA; Serial: 1161/1
- Measurement SW: DASY52, Version 52.8 (8); SEMCAD X Version 14.6.10 (7331)

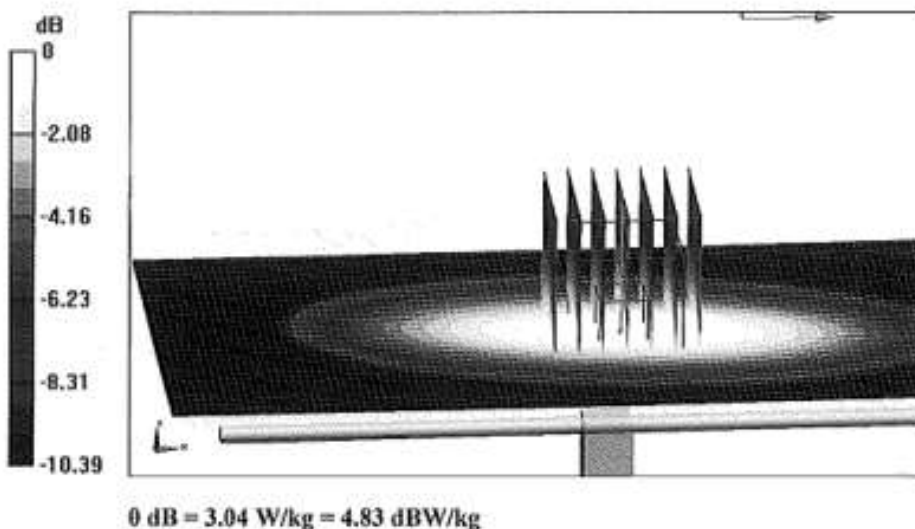
Dipole Calibration/Zoom Scan (7x7x7) (7x7x7)/Cube 0: Measurement grid: dx=5mm, dy=5mm, dz=5mm

Reference Value = 56.07 V/m; Power Drift = 0.02 dB

Peak SAR (extrapolated) = 3.58 W/kg

SAR(1 g) = 2.39 W/kg; SAR(10 g) = 1.57 W/kg

Maximum value of SAR (measured) = 3.04 W/kg

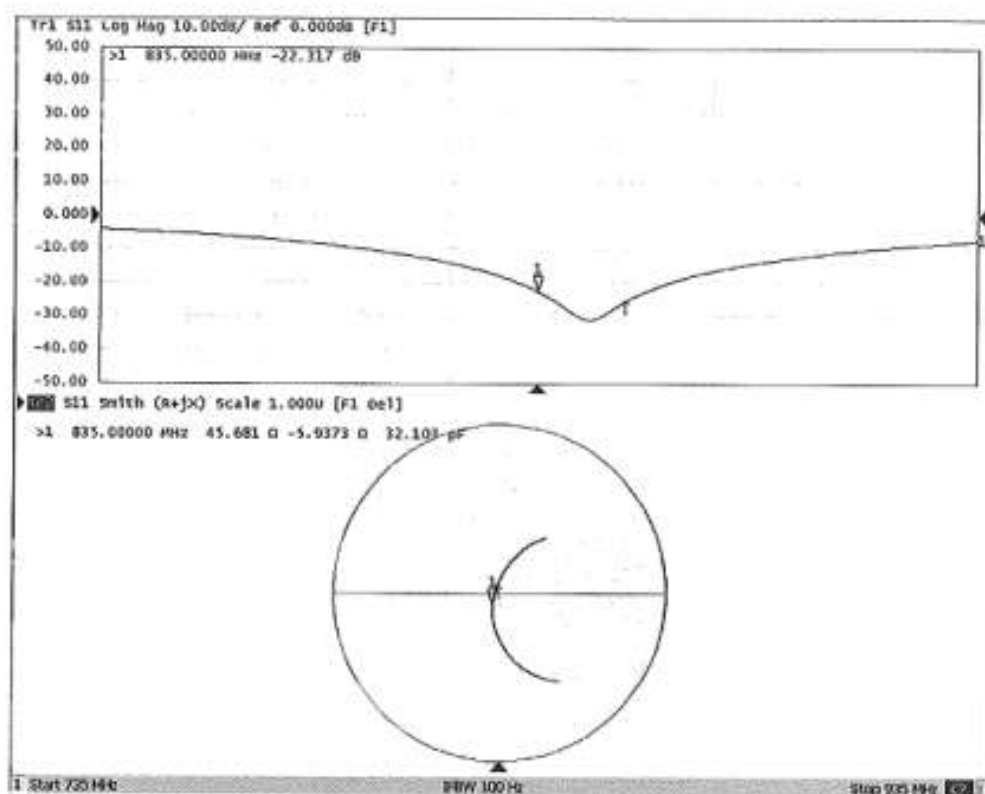




In Collaboration with
s p e a k
CALIBRATION LABORATORY

Add: No.51 Xueyuan Road, Haidian District, Beijing, 100191, China
Tel: +86-10-62304633-2079 Fax: +86-10-62304633-2504
E-mail: cttl@chinattl.com Http://www.chinattl.cn

Impedance Measurement Plot for Body TSL





In Collaboration with
s p e a g
CALIBRATION LABORATORY

Add: No.51 Xueyuan Road, Haidian District, Beijing, 100191, China
Tel: +86-10-62304633-2079 Fax: +86-10-62304633-2504
E-mail: cttl@chinattll.com <http://www.chinattll.cn>



Client

SMQ

Certificate No: Z15-97117

CALIBRATION CERTIFICATE

Object D1900V2 - SN: 5d162

Calibration Procedure(s) FD-Z11-2-003-01
Calibration Procedures for dipole validation kits

Calibration date: September 16, 2015

This calibration Certificate documents the traceability to national standards, which realize the physical units of measurements(SI). The measurements and the uncertainties with confidence probability are given on the following pages and are part of the certificate.

All calibrations have been conducted in the closed laboratory facility: environment temperature(22±3)°C and humidity<70%.

Calibration Equipment used (M&TE critical for calibration)

Primary Standards	ID #	Cal Date(Calibrated by, Certificate No.)	Scheduled Calibration
Power Meter NRP2	101919	01-Jul-15 (CTTL, No.J15X04256)	Jun-16
Power sensor NRP-Z91	101547	01-Jul-15 (CTTL, No.J15X04256)	Jun-16
Reference Probe EX3DV4	SN 3846	24-Sep-14(SPEAG,No.EX3-3846_Sep14)	Sep-15
DAE4	SN 910	16-Jun-15(SPEAG,No.DAE4-910_Jun15)	Jun-16
Secondary Standards	ID #	Cal Date(Calibrated by, Certificate No.)	Scheduled Calibration
Signal Generator E4438C	MY49071430	02-Feb-15 (CTTL, No.J15X00729)	Feb-16
Network Analyzer E5071C	MY46110673	03-Feb-15 (CTTL, No.J15X00728)	Feb-16

	Name	Function	Signature
Calibrated by:	Zhao Jing	SAR Test Engineer	
Reviewed by:	Qi Dianyuan	SAR Project Leader	
Approved by:	Lu Bingsong	Deputy Director of the laboratory	

Issued: September 23, 2015

This calibration certificate shall not be reproduced except in full without written approval of the laboratory.

Certificate No: Z15-97117

Page 1 of 1



In Collaboration with

s p e a g
CALIBRATION LABORATORY

Add: No.51 Xueyuan Road, Haidian District, Beijing, 100191, China
Tel: +86-10-62304633-2079 Fax: +86-10-62304633-2504
E-mail: cttl@chinattl.com Http://www.chinattl.cn

Glossary:

TSL	tissue simulating liquid
ConvF	sensitivity in TSL / NORMx,y,z
N/A	not applicable or not measured

Calibration is Performed According to the Following Standards:

- IEEE Std 1528-2013, "IEEE Recommended Practice for Determining the Peak Spatial-Averaged Specific Absorption Rate (SAR) in the Human Head from Wireless Communications Devices: Measurement Techniques", June 2013
- IEC 62209-1, "Procedure to measure the Specific Absorption Rate (SAR) For hand-held devices used in close proximity to the ear (frequency range of 300MHz to 3GHz)", February 2005
- KDB865664, SAR Measurement Requirements for 100 MHz to 6 GHz

Additional Documentation:

- DASY4/5 System Handbook

Methods Applied and Interpretation of Parameters:

- Measurement Conditions:** Further details are available from the Validation Report at the end of the certificate. All figures stated in the certificate are valid at the frequency indicated.
- Antenna Parameters with TSL:** The dipole is mounted with the spacer to position its feed point exactly below the center marking of the flat phantom section, with the arms oriented parallel to the body axis.
- Feed Point Impedance and Return Loss:** These parameters are measured with the dipole positioned under the liquid filled phantom. The impedance stated is transformed from the measurement at the SMA connector to the feed point. The Return Loss ensures low reflected power. No uncertainty required.
- Electrical Delay:** One-way delay between the SMA connector and the antenna feed point. No uncertainty required.
- SAR measured:** SAR measured at the stated antenna input power.
- SAR normalized:** SAR as measured, normalized to an input power of 1 W at the antenna connector.
- SAR for nominal TSL parameters:** The measured TSL parameters are used to calculate the nominal SAR result.

The reported uncertainty of measurement is stated as the standard uncertainty of Measurement multiplied by the coverage factor $k=2$, which for a normal distribution corresponds to a coverage probability of approximately 95%.



In Collaboration with
s p e a g
CALIBRATION LABORATORY

Add: No.51 Xueyuan Road, Haidian District, Beijing, 100191, China
Tel: +86-10-62304633-2079 Fax: +86-10-62304633-2504
E-mail: cttl@chinattl.com Http://www.chinattl.cn

Measurement Conditions

DASY system configuration, as far as not given on page 1.

DASY Version	DASY52	52.B.8.1222
Extrapolation	Advanced Extrapolation	
Phantom	Triple Flat Phantom 5.1C	
Distance Dipole Center - TSL	10 mm	with Spacer
Zoom Scan Resolution	dx, dy, dz = 5 mm	
Frequency	1900 MHz \pm 1 MHz	

Head TSL parameters

The following parameters and calculations were applied.

	Temperature	Permittivity	Conductivity
Nominal Head TSL parameters	22.0 °C	40.0	1.40 mho/m
Measured Head TSL parameters	(22.0 \pm 0.2) °C	40.9 \pm 6 %	1.38 mho/m \pm 6 %
Head TSL temperature change during test	<1.0 °C	----	----

SAR result with Head TSL

SAR averaged over 1 cm^3 (1 g) of Head TSL	Condition	
SAR measured	250 mW input power	9.96 mW / g
SAR for nominal Head TSL parameters	normalized to 1W	40.4 mW / g \pm 20.8 % (k=2)
SAR averaged over 10 cm^3 (10 g) of Head TSL	Condition	
SAR measured	250 mW input power	5.20 mW / g
SAR for nominal Head TSL parameters	normalized to 1W	21.0 mW / g \pm 20.4 % (k=2)

Body TSL parameters

The following parameters and calculations were applied.

	Temperature	Permittivity	Conductivity
Nominal Body TSL parameters	22.0 °C	53.3	1.52 mho/m
Measured Body TSL parameters	(22.0 \pm 0.2) °C	54.6 \pm 6 %	1.51 mho/m \pm 6 %
Body TSL temperature change during test	<1.0 °C	----	----

SAR result with Body TSL

SAR averaged over 1 cm^3 (1 g) of Body TSL	Condition	
SAR measured	250 mW input power	10.2 mW / g
SAR for nominal Body TSL parameters	normalized to 1W	41.2 mW / g \pm 20.8 % (k=2)
SAR averaged over 10 cm^3 (10 g) of Body TSL	Condition	
SAR measured	250 mW input power	5.37 mW / g
SAR for nominal Body TSL parameters	normalized to 1W	21.6 mW / g \pm 20.4 % (k=2)



In Collaboration with
s p e a g
CALIBRATION LABORATORY

Add: No.51 Xueyuan Road, Haidian District, Beijing, 100191, China
Tel: +86-10-62304633-2979 Fax: +86-10-62304633-2504
E-mail: cttl@chinattl.com Http://www.chinattl.cn

Appendix

Antenna Parameters with Head TSL

Impedance, transformed to feed point	$51.0\Omega + 2.72j\Omega$
Return Loss	- 30.9dB

Antenna Parameters with Body TSL

Impedance, transformed to feed point	$48.4\Omega + 3.95j\Omega$
Return Loss	- 27.3dB

General Antenna Parameters and Design

Electrical Delay (one direction)	1.301 ns
----------------------------------	----------

After long term use with 100W radiated power, only a slight warming of the dipole near the feedpoint can be measured.

The dipole is made of standard semirigid coaxial cable. The center conductor of the feeding line is directly connected to the second arm of the dipole. The antenna is therefore short-circuited for DC-signals. On some of the dipoles, small end caps are added to the dipole arms in order to improve matching when loaded according to the position as explained in the "Measurement Conditions" paragraph. The SAR data are not affected by this change. The overall dipole length is still according to the Standard. No excessive force must be applied to the dipole arms, because they might bend or the soldered connections near the feedpoint may be damaged.

Additional EUT Data

Manufactured by	SPEAG
-----------------	-------



In Collaboration with
s p e a g
CALIBRATION LABORATORY

Add: No.51 Xueyuan Road, Haidian District, Beijing, 100191, China
Tel: +86-10-62304633-2079 Fax: +86-10-62304633-2504
E-mail: cttl@chinattl.com Http://www.chinattl.cn

DASY5 Validation Report for Head TSL

Date: 09.16.2015

Test Laboratory: CTTL, Beijing, China

DUT: Dipole 1900 MHz; Type: D1900V2; Serial: D1900V2 - SN: 5d162

Communication System: UID 0, CW; Frequency: 1900 MHz; Duty Cycle: 1:1

Medium parameters used: $f = 1900$ MHz; $\sigma = 1.378$ S/m; $\epsilon_r = 40.94$; $\rho = 1000$ kg/m³

Phantom section: Right Section

Measurement Standard: DASY5 (IEEE/IEC/ANSI C63.19-2007)

DASY5 Configuration:

- Probe: EX3DV4 - SN3846; ConvF(7.26, 7.26, 7.26); Calibrated: 9/24/2014;
- Sensor-Surface: 2mm (Mechanical Surface Detection)
- Electronics: DAE4 Sn910; Calibrated: 6/16/2015
- Phantom: Triple Flat Phantom 5.1C; Type: QD 000 P5I CA; Serial: 1161/1
- Measurement SW: DASY52, Version 52.8 (8); SEMCAD X Version 14.6.10 (7331)

System Performance Check/Zoom Scan (7x7x7) (7x7x7)/Cube 0: Measurement grid:

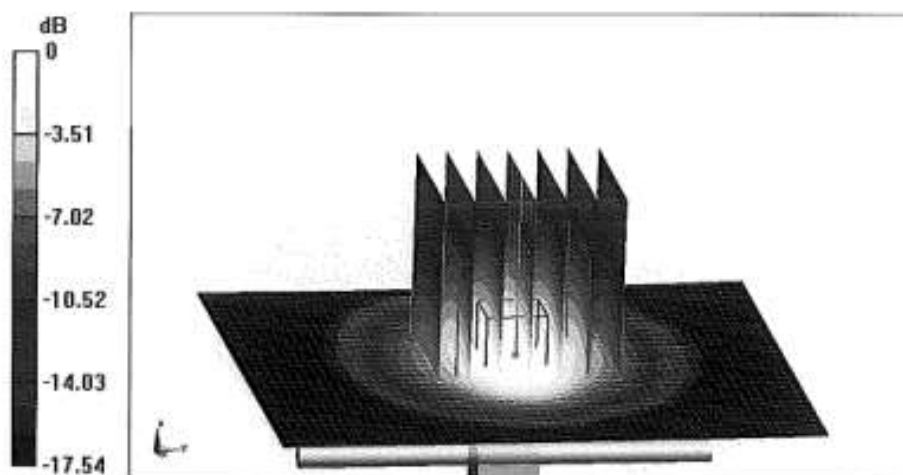
$dx=5mm$, $dy=5mm$, $dz=5mm$

Reference Value = 104.1 V/m; Power Drift = -0.02 dB

Peak SAR (extrapolated) = 18.0 W/kg

SAR(1 g) = 9.96 W/kg; SAR(10 g) = 5.2 W/kg

Maximum value of SAR (measured) = 14.2 W/kg



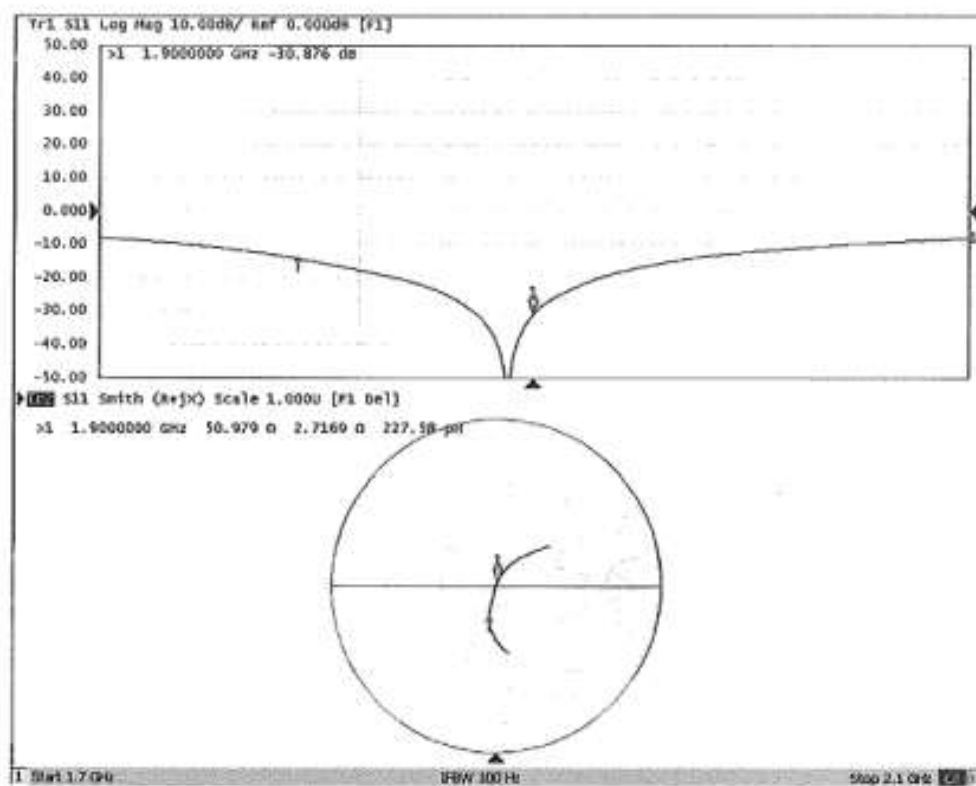
0 dB = 14.2 W/kg = 11.52 dBW/kg



In Collaboration with
s p e a g
CALIBRATION LABORATORY

Add: No.51 Xueyuan Road, Haidian District, Beijing, 100191, China
Tel: +86-10-62304633-2079 Fax: +86-10-62304633-2504
E-mail: cntl@chinattl.com Http://www.chinattl.cn

Impedance Measurement Plot for Head TSL





In Collaboration with
s p e a g
CALIBRATION LABORATORY

Add: No.51 Xueyuan Road, Haidian District, Beijing, 100191, China
Tel: +86-10-62304633-2079 Fax: +86-10-62304633-2504
E-mail: cttl@chinattl.com Http://www.chinattl.cn

DASY5 Validation Report for Body TSL

Date: 09.16.2015

Test Laboratory: CTTL, Beijing, China

DUT: Dipole 1900 MHz; Type: D1900V2; Serial: D1900V2 - SN: 5d162

Communication System: UID 0, CW; Frequency: 1900 MHz; Duty Cycle: 1:1

Medium parameters used: $f = 1900$ MHz; $\sigma = 1.507$ S/m; $\epsilon_r = 54.56$; $\rho = 1000$ kg/m³

Phantom section: Left Section

Measurement Standard: DASY5 (IEEE/IEC/ANSI C63.19-2007)

DASY5 Configuration:

- Probe: EX3DV4 - SN3846; ConvF(7.15, 7.15, 7.15); Calibrated: 9/24/2014;
- Sensor-Surface: 2mm (Mechanical Surface Detection)
- Electronics: DAE4 Sn910; Calibrated: 6/16/2015
- Phantom: Triple Flat Phantom 5.1C; Type: QD 000 P51 CA; Serial: 1161/I
- Measurement SW: DASY52, Version 52.8 (8); SEMCAD X Version 14.6.10 (7331)

System Performance Check/Zoom Scan (7x7x7) (7x7x7)/Cube 0: Measurement grid:

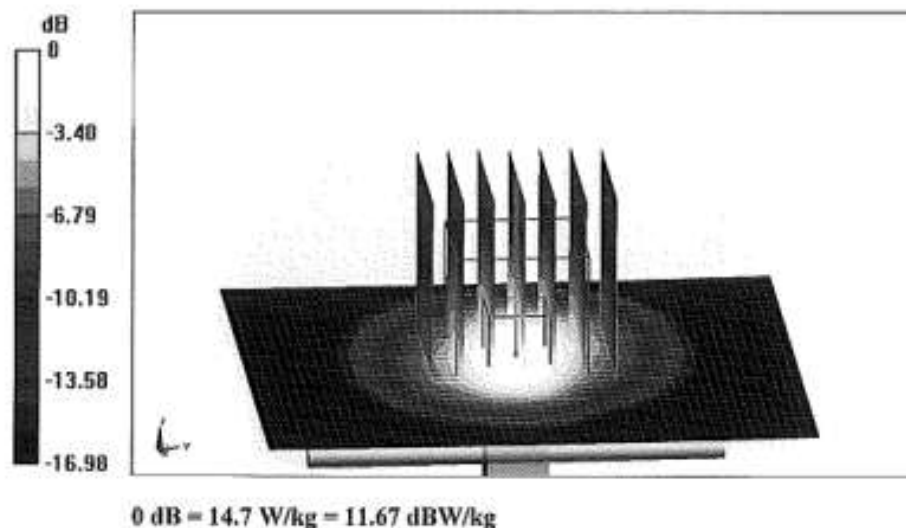
$dx=5$ mm, $dy=5$ mm, $dz=5$ mm

Reference Value = 100.5 V/m; Power Drift = -0.00 dB

Peak SAR (extrapolated) = 18.4 W/kg

SAR(1 g) = 10.2 W/kg; SAR(10 g) = 5.37 W/kg

Maximum value of SAR (measured) = 14.7 W/kg

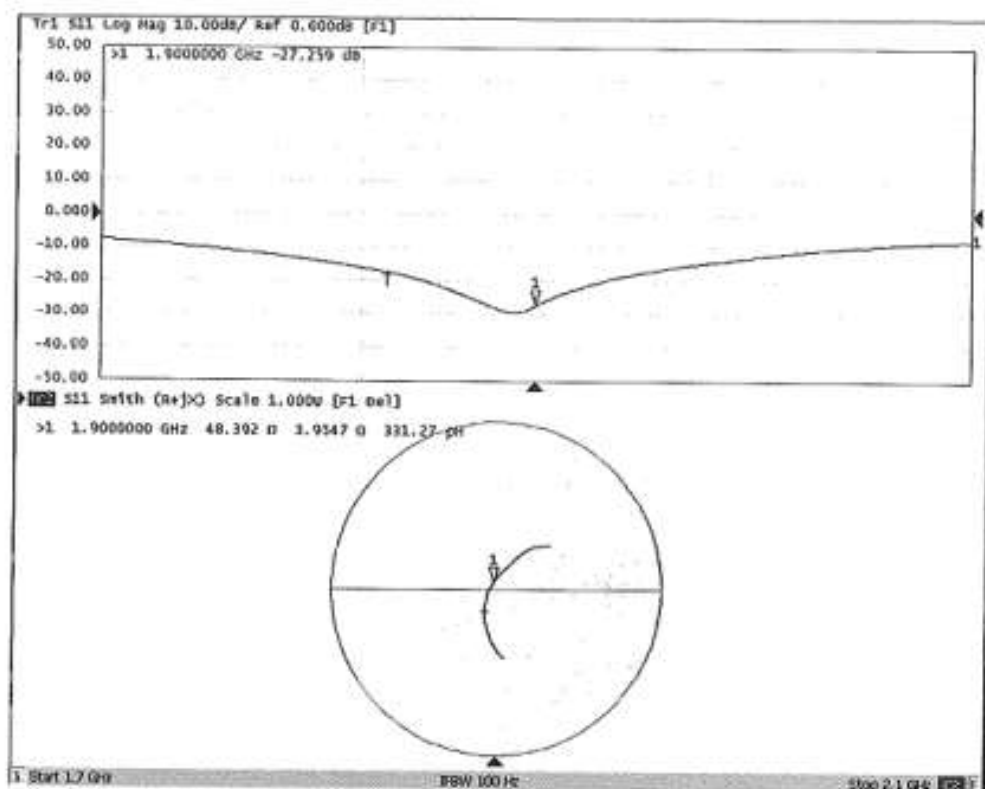




In Collaboration with
s p e a k
CALIBRATION LABORATORY

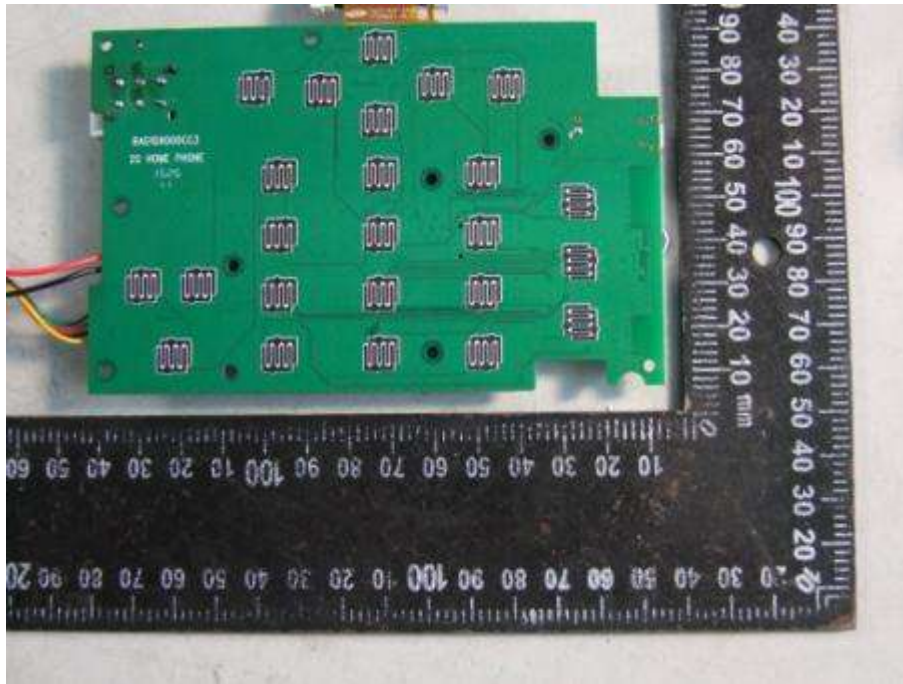
Add: No.51 Xueyuan Road, Haidian District, Beijing, 100191, China
Tel: +86-10-62304633-2079 Fax: +86-10-62304633-2504
E-mail: cttl@chinattl.com Http://www.chinattl.cn

Impedance Measurement Plot for Body TSL



APPENDIX E: DUT PHOTOS





APPENDIX F: Test Position Photos

Back Side Antenna horizontal 25mm

