



SAR TEST REPORT

No. I14N01400-SAR

For

TCT Mobile Limited

GSM Dual band &UMTS Dual band mobile phone

Mode Name: 2045M

With

Hardware Version: PIO

Software Version: V1.2

FCC ID: 2ACCJB006

Issued Date: 2014-12-22

Note:

The test results in this test report relate only to the devices specified in this report. This report shall not be reproduced except in full without the written approval of CTTL.

Test Laboratory:

CTTL, Telecommunication Technology Labs, Academy of Telecommunication Research, MIIT

No.52, Huayuan North Road, Haidian District, Beijing, P. R. China 100191.

Tel: +86(0)10-62304633-2512, Fax: +86(0)10-62304633-2504

Email: ctl_terminals@catr.cn, website: www.chinattl.com

REPORT HISTORY

Report Number	Revision	Issue Date	Description
I14N01400-SAR	Rev.0	2014-12-22	Initial creation of test report

TABLE OF CONTENT

1 TEST LABORATORY	5
1.1 TESTING LOCATION	5
1.2 TESTING ENVIRONMENT.....	5
1.3 PROJECT DATA	5
1.4 SIGNATURE.....	5
2 STATEMENT OF COMPLIANCE	6
3 CLIENT INFORMATION	7
3.1 APPLICANT INFORMATION	7
3.2 MANUFACTURER INFORMATION	7
4 EQUIPMENT UNDER TEST (EUT) AND ANCILLARY EQUIPMENT (AE)	8
4.1 ABOUT EUT	8
4.2 INTERNAL IDENTIFICATION OF EUT USED DURING THE TEST	8
4.3 INTERNAL IDENTIFICATION OF AE USED DURING THE TEST	8
5 TEST METHODOLOGY	9
5.1 APPLICABLE LIMIT REGULATIONS	9
5.2 APPLICABLE MEASUREMENT STANDARDS.....	9
6 SPECIFIC ABSORPTION RATE (SAR).....	10
6.1 INTRODUCTION.....	10
6.2 SAR DEFINITION	10
7 TISSUE SIMULATING LIQUIDS	11
7.1 TARGETS FOR TISSUE SIMULATING LIQUID	11
7.2 DIELECTRIC PERFORMANCE	11
8 SYSTEM VERIFICATION	14
8.1 SYSTEM SETUP.....	14
8.2 SYSTEM VERIFICATION.....	15
9 MEASUREMENT PROCEDURES	16
9.1 TESTS TO BE PERFORMED	16
9.2 GENERAL MEASUREMENT PROCEDURE.....	17
9.3 WCDMA MEASUREMENT PROCEDURES FOR SAR	18
9.4 BLUETOOTH & WI-FI MEASUREMENT PROCEDURES FOR SAR	19
9.5 POWER DRIFT.....	19
10 AREA SCAN BASED 1-G SAR.....	20
10.1 REQUIREMENT OF KDB.....	20
10.2 FAST SAR ALGORITHMS	20
11 CONDUCTED OUTPUT POWER.....	21

11.1 MANUFACTURING TOLERANCE	21
11.2 GSM MEASUREMENT RESULT	23
11.3 WCDMA MEASUREMENT RESULT	24
11.4 WI-FI AND BT MEASUREMENT RESULT	24
12 SIMULTANEOUS TX SAR CONSIDERATIONS	25
12.1 INTRODUCTION	25
12.2 TRANSMIT ANTENNA SEPARATION DISTANCES	25
12.3 STANDALONE SAR TEST EXCLUSION CONSIDERATIONS	26
13 EVALUATION OF SIMULTANEOUS	27
14 SAR TEST RESULT	28
14.1 SAR RESULTS FOR FAST SAR	29
14.2 SAR RESULTS FOR STANDARD PROCEDURE	33
15 SAR MEASUREMENT VARIABILITY	35
16 MEASUREMENT UNCERTAINTY	37
16.1 MEASUREMENT UNCERTAINTY FOR NORMAL SAR TESTS (300MHz~3GHz)	37
16.2 MEASUREMENT UNCERTAINTY FOR FAST SAR TESTS (300MHz~3GHz)	38
17 MAIN TEST INSTRUMENTS	39
ANNEX A GRAPH RESULTS	40
ANNEX B SYSTEM VERIFICATION RESULTS	56
ANNEX C SAR MEASUREMENT SETUP	61
ANNEX D POSITION OF THE WIRELESS DEVICE IN RELATION TO THE PHANTOM	67
ANNEX E EQUIVALENT MEDIA RECIPES	70
ANNEX F SYSTEM VALIDATION	71
ANNEX G PROBE CALIBRATION CERTIFICATE	72
ANNEX H DIPOLE CALIBRATION CERTIFICATE	83

1 Test Laboratory

1.1 Testing Location

Company Name: TMC Shenzhen, Telecommunication Metrology Center of MIIT
Address: No. 12building, Shangsha Innovation and Technology Park, Futian District, Shenzhen, P. R. China
Postal Code: 518048
Telephone: +86-755-33322000
Fax: +86-755-33322001

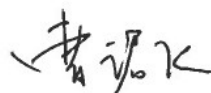
1.2 Testing Environment

Temperature: 18°C~25 °C,
Relative humidity: 30%~ 70%
Ground system resistance: < 0.5 Ω
Ambient noise & Reflection: < 0.012 W/kg

1.3 Project Data

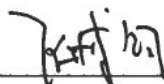
Project Leader: Zhang Bojun
Test Engineer: Cao Junfei
Testing Start Date: November 26th, 2014
Testing End Date: December 21th, 2014

1.4 Signature



Cao Junfei

(Prepared this test report)



Zhang Bojun

(Reviewed this test report)



Lu Minniu

Director of the laboratory

(Approved this test report)

2 Statement of Compliance

The maximum results of Specific Absorption Rate (SAR) found during testing for TCT Mobile Limited GSM Dual band &UMTS Dual band mobile phone 2045M are as follows:

Table 2.1: Highest Reported SAR (1g)

Exposure Configuration	Technology Band	Highest Reported SAR 1g (W/Kg)	Equipment Class
Head (Separation Distance 0mm)	GSM 850	1.08	PCE
	PCS 1900	0.36	
	UMTS FDD 5	1.20	
	UMTS FDD 1	0.83	
Body-worn (Separation Distance 15mm)	GSM 850	1.17	PCE
	PCS 1900	0.66	
	UMTS FDD 5	0.99	
	UMTS FDD 1	1.09	

The SAR values found for the Mobile Phone are below the maximum recommended levels of 1.6 W/Kg as averaged over any 1g tissue according to the ANSI C95.1-1999.

For body worn operation, this device has been tested and meets FCC RF exposure guidelines when used with any accessory that contains no metal and which provides a minimum separation distance of 15 mm between this device and the body of the user. Use of other accessories may not ensure compliance with FCC RF exposure guidelines.

The EUT battery must be fully charged and checked periodically during the test to ascertain uniform power output.

The measurement together with the test system set-up is described in annex C of this test report. A detailed description of the equipment under test can be found in chapter 4 of this test report.

The highest reported SAR value is obtained at the case of (**Table 2.1**), and the values are: **1.20W/kg (1g)**.

Table 2.2: The sum of reported SAR values for main antenna and Bluetooth

	Position	Main antenna	BT*	Sum
Highest reported SAR value for Head	Left hand, Touch cheek	0.83	0.17	1.00
	Right hand, Touch cheek	1.20	0.17	1.37
Highest reported SAR value for Body	Rear	1.17	0.06	1.23

BT* - Estimated SAR for Bluetooth (see the table 13.3)

According to the above tables, the highest sum of reported SAR values is **1.37 W/kg (1g)**. The detail for simultaneous transmission consideration is described in chapter 13.

3 Client Information

3.1 Applicant Information

Company Name:	TCT Mobile Limited
Address /Post:	5F, C building, No. 232, Liang Jing Road ZhangJiang High-Tech Park, Pudong Area Shanghai, P.R. China. 201203
City:	Shanghai
Postal Code:	201203
Country:	P.R.China
Contact:	Houhua.FAN
Email:	houhua.fan@tcl.com
Telephone:	+86(0)21 61460666
Fax:	+86(0)21 61460602

3.2 Manufacturer Information

Company Name:	TCT Mobile Limited
Address /Post:	5F, C building, No. 232, Liang Jing Road ZhangJiang High-Tech Park, Pudong Area Shanghai, P.R. China. 201203
City:	Shanghai
Postal Code:	201203
Country:	P.R.China
Contact:	Houhua.FAN
Email:	houhua.fan@tcl.com
Telephone:	+86(0)21 61460666
Fax:	+86(0)21 61460602

4 Equipment Under Test (EUT) and Ancillary Equipment (AE)

4.1 About EUT

Description:	GSM Dual band &UMTS Dual band mobile phone
Mode Name:	2045M
Marketing Name:	2045M
Operating mode(s):	GSM 850/1900, WCDMA 850/2100, BT,
Tested Tx Frequency:	825 – 848.8 MHz (GSM 850)
	1850.2 – 1910 MHz (GSM 1900)
	826.4–846.6 MHz (WCDMA850 Band V)
	1922.4 – 1977.6 MHz (WCDMA 2100, Band I)
GPRS&EGPRS Multislot Class:	12
GPRS capability Class:	B
WCDMA Category:	HSDPA: 8
	HSUPA: 5
Release Version:	GSM: Rel4
	GPRS: Rel4
	UMTS: R6
Test device Production information:	Production unit
Device type:	Portable device
Antenna type:	Integrated antenna
Accessories/Body-worn configurations:	Headset
Hotspot mode:	/
Form factor:	124.4 mm x51.9 mm

4.2 Internal Identification of EUT used during the test

EUT ID*	SN or IMEI	HW Version	SW Version
EUT1	355624060000039	PIO	V1.2

*EUT ID: is used to identify the test sample in the lab internally.

4.3 Internal Identification of AE used during the test

AE ID*	Description	Model	SN	Manufacturer
AE1	Battery	CAB3120000C1	/	BYD
AE2	Headset	CCB0010A11C7	/	Shenghua
AE3	Headset	CCB0010A10C7	/	Shenghua

*AE ID: is used to identify the test sample in the lab internally.

Note:

AE3 and AE2 are the same, so they can use the same results.

5 TEST METHODOLOGY

5.1 Applicable Limit Regulations

ANSI C95.1–1999: IEEE Standard for Safety Levels with Respect to Human Exposure to Radio Frequency Electromagnetic Fields, 3 kHz to 300 GHz.

It specifies the maximum exposure limit of **1.6 W/kg** as averaged over any 1 gram of tissue for portable devices being used within 20 cm of the user in the uncontrolled environment.

5.2 Applicable Measurement Standards

IEEE 1528–2013: Recommended Practice for Determining the Peak Spatial-Average Specific Absorption Rate (SAR) in the Human Head from Wireless Communications Devices: Experimental Techniques.

KDB447498 D01: General RF Exposure Guidance v05r02: Mobile and Portable Devices RF Exposure Procedures and Equipment Authorization Policies.

KDB648474 D04 Handset SAR v01r02: SAR Evaluation Considerations for Wireless Handsets.

KDB941225 D06: SAR Evaluation Procedures for Portable Devices with Wireless Router Capabilities

KDB248227 D01 Hotspot Mode SAR v02 r03: SAR Measurement Procedures for 802.11a/b/g transmitters.

KDB 865664 D01 SAR measurement 100 MHz to 6 GHz v01r03: SAR Measurement Requirements for 100 MHz to 6 GHz

KDB 865664 D02 RF Exposure Reporting v01r01: RF Exposure Compliance Reporting and Documentation Considerations

6 Specific Absorption Rate (SAR)

6.1 Introduction

SAR is related to the rate at which energy is absorbed per unit mass in an object exposed to a radio field. The SAR distribution in a biological body is complicated and is usually carried out by experimental techniques or numerical modeling. The standard recommends limits for two tiers of groups, occupational/controlled and general population/uncontrolled, based on a person's awareness and ability to exercise control over his or her exposure. In general, occupational/controlled exposure limits are higher than the limits for general population/uncontrolled.

6.2 SAR Definition

The SAR definition is the time derivative (rate) of the incremental energy (dW) absorbed by (dissipated in) an incremental mass (dm) contained in a volume element (dv) of a given density (ρ). The equation description is as below:

$$SAR = \frac{d}{dt} \left(\frac{dW}{dm} \right) = \frac{d}{dt} \left(\frac{dW}{\rho dv} \right)$$

SAR is expressed in units of Watts per kilogram (W/kg)

SAR measurement can be either related to the temperature elevation in tissue by

$$SAR = c \left(\frac{\delta T}{\delta t} \right)$$

Where: C is the specific heat capacity, δT is the temperature rise and δt is the exposure duration, or related to the electrical field in the tissue by

$$SAR = \frac{\sigma |E|^2}{\rho}$$

Where: σ is the conductivity of the tissue, ρ is the mass density of tissue and E is the RMS electrical field strength.

However for evaluating SAR of low power transmitter, electrical field measurement is typically applied.

7 Tissue Simulating Liquids

7.1 Targets for tissue simulating liquid

Table 7.1: Targets for tissue simulating liquid

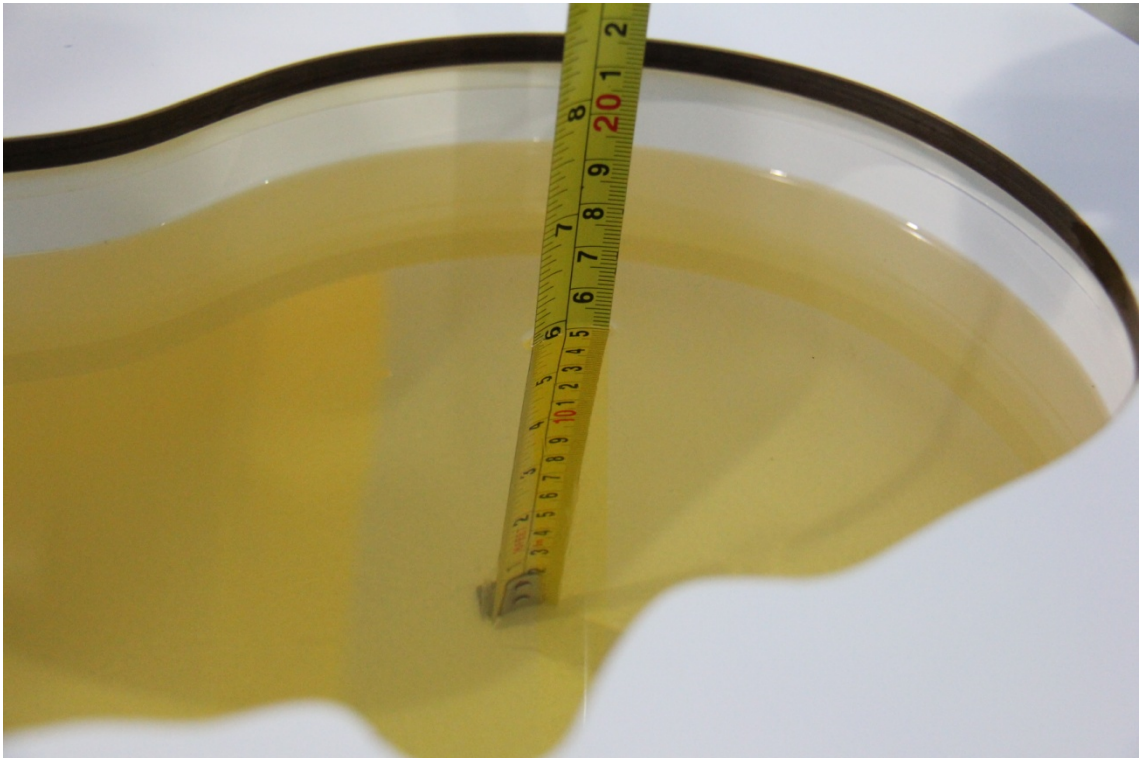
Frequency (MHz)	Liquid Type	Conductivity (σ)	$\pm 5\%$ Range	Permittivity (ϵ)	$\pm 5\%$ Range
835	Head	0.90	0.86~0.95	41.5	39.4~43.6
835	Body	0.97	0.92~1.02	55.2	52.4~58.0
1900	Head	1.40	1.33~1.47	40.0	38.0~42.0
1900	Body	1.52	1.44~1.60	53.3	50.6~56.0

7.2 Dielectric Performance

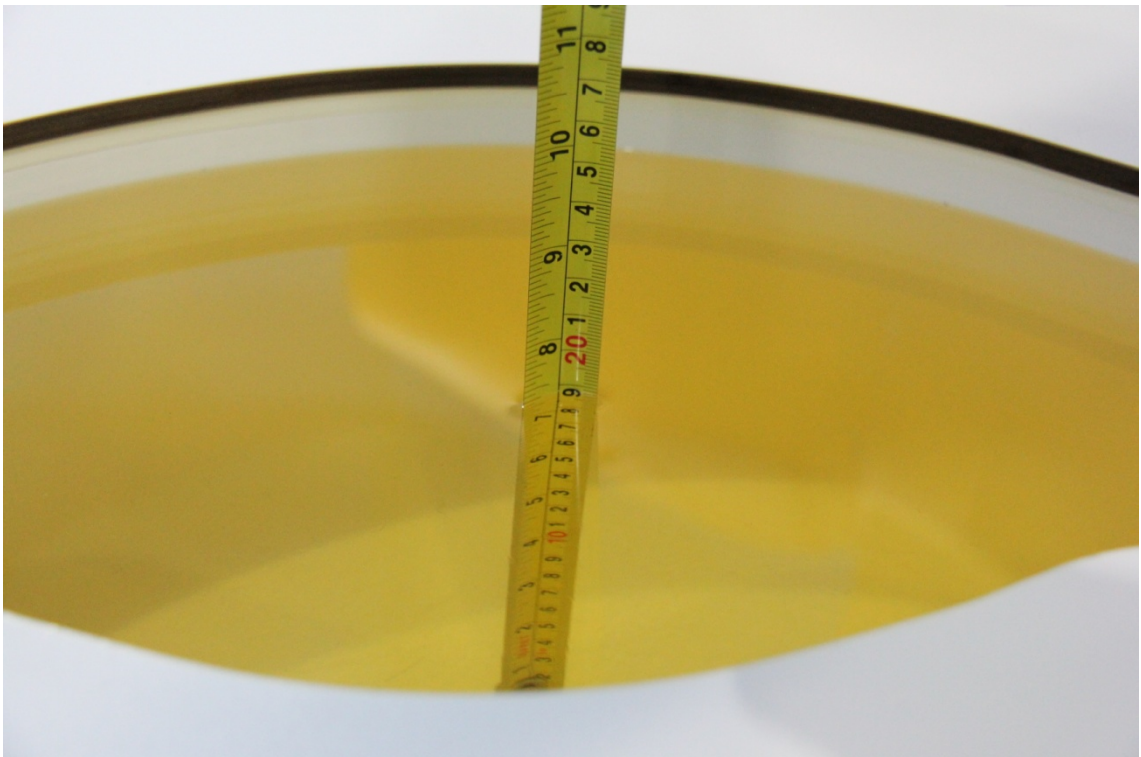
Table 7.2: Dielectric Performance of Tissue Simulating Liquid

Measurement Date (yyyy-mm-dd)	Type	Frequency	Permittivity ϵ	Drift (%)	Conductivity σ (S/m)	Drift (%)
2014-11-26	Head	835 MHz	41.65	0.36	0.909	1.00
2014-12-21	Body	835 MHz	55.56	0.65	0.989	1.96
2014-11-27	Head	1900 MHz	41.07	2.68	1.441	2.93
2014-12-16	Body	1900 MHz	52.68	-1.17	1.512	-0.53

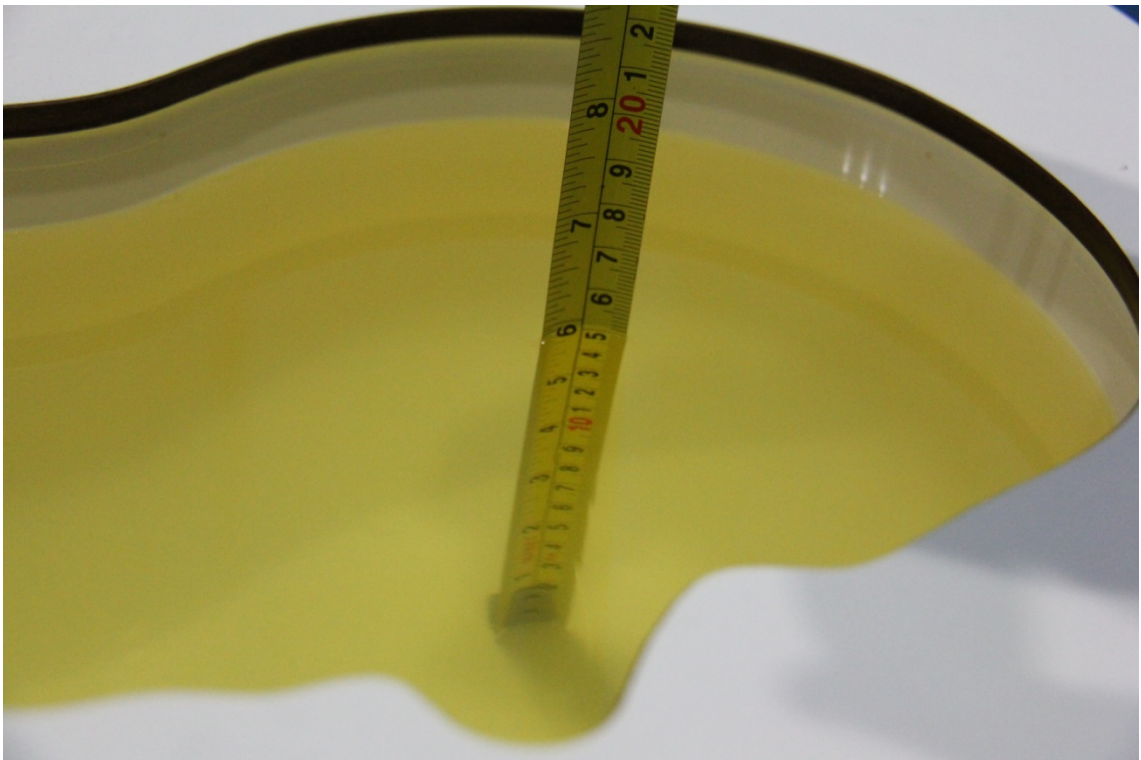
Note: The liquid temperature is 22.0 °C



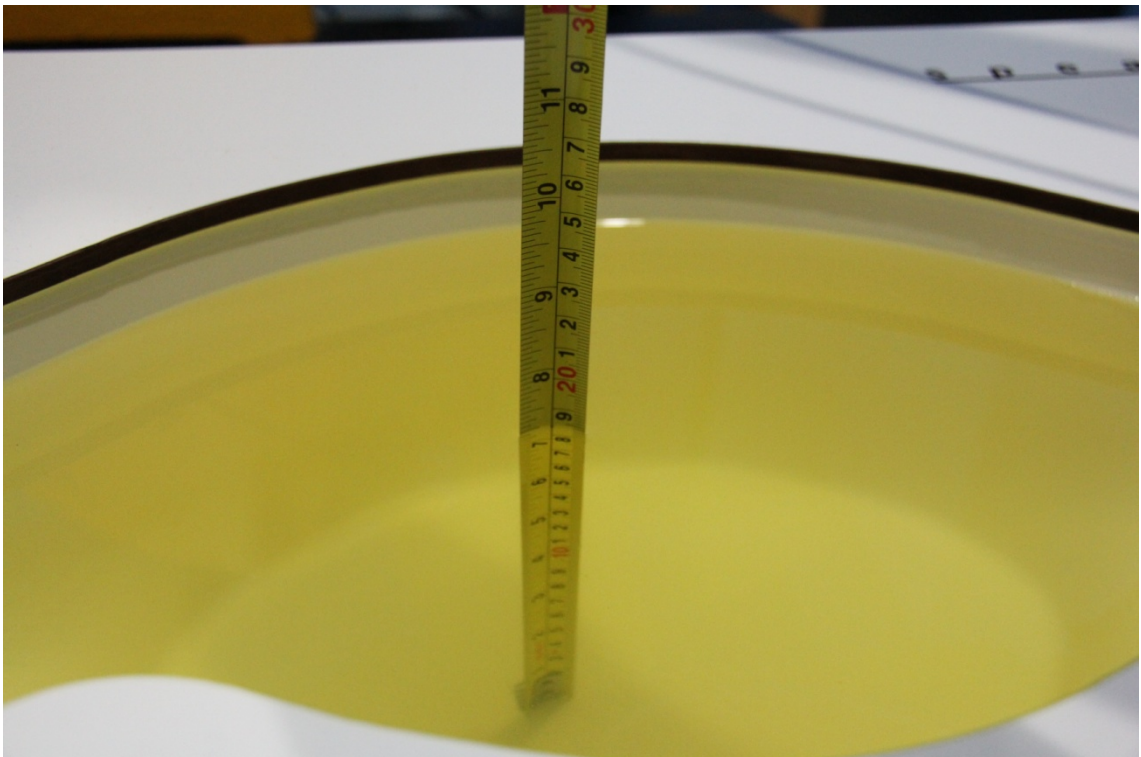
Picture 7-1: Liquid depth in the Head Phantom (835 MHz)



Picture 7-2: Liquid depth in the Flat Phantom (835 MHz)



Picture 7-3: Liquid depth in the Head Phantom (1900 MHz)

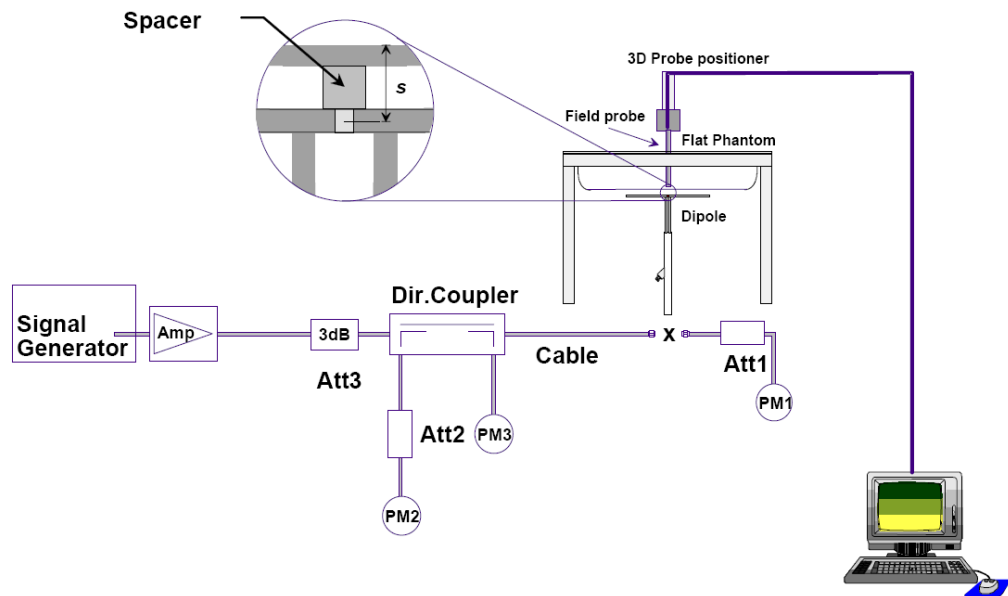


Picture 7-4 Liquid depth in the Flat Phantom (1900MHz)

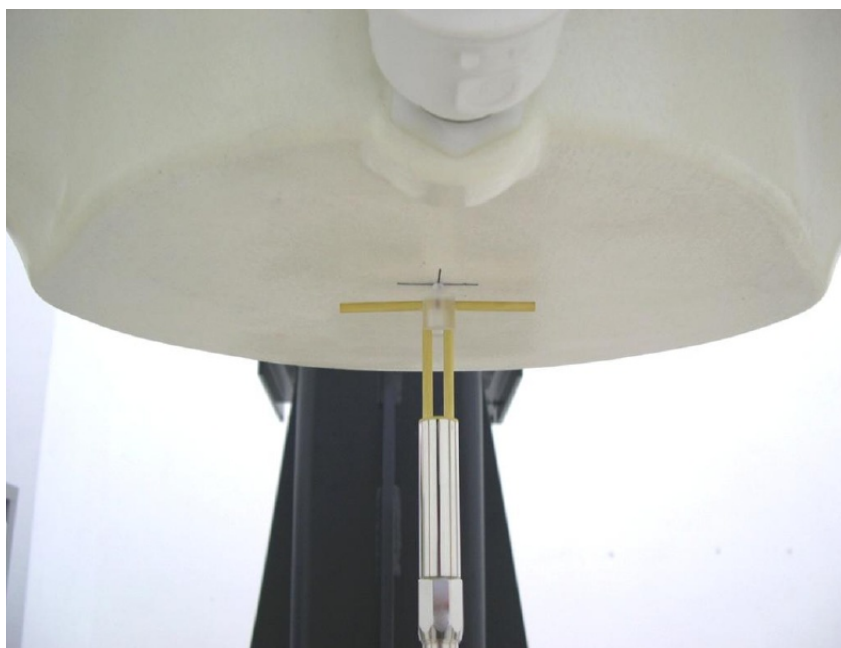
8 System verification

8.1 System Setup

In the simplified setup for system evaluation, the DUT is replaced by a calibrated dipole and the power source is replaced by a continuous wave that comes from a signal generator. The calibrated dipole must be placed beneath the flat phantom section of the SAM twin phantom with the correct distance holder. The distance holder should touch the phantom surface with a light pressure at the reference marking and be oriented parallel to the long side of the phantom. The equipment setup is shown below:



Picture 8.1 System Setup for System Evaluation



Picture 8.2 Photo of Dipole Setup

8.2 System Verification

SAR system verification is required to confirm measurement accuracy, according to the tissue dielectric media, probe calibration points and other system operating parameters required for measuring the SAR of a test device. The system verification must be performed for each frequency band and within the valid range of each probe calibration point required for testing the device.

The system verification results are required that the area scan estimated 1-g SAR is within 3% of the zoom scan 1-g SAR. The details are presented in annex B.

Table 8.1: System Verification of Head

Measurement Date (yyyy-mm-dd)	Frequency	Target value (W/kg)		Measured value (W/kg)		Deviation	
		10 g Average	1 g Average	10 g Average	1 g Average	10 g Average	1 g Average
2014-11-26	835 MHz	6.17	9.43	6.44	9.84	4.38%	4.35%
2014-11-27	1900 MHz	21.1	40.6	20.88	39.48	-1.04%	-2.76%

Table 8.2: System Verification of Body

Measurement Date (yyyy-mm-dd)	Frequency	Target value (W/kg)		Measured value (W/kg)		Deviation	
		10 g Average	1 g Average	10 g Average	1 g Average	10 g Average	1 g Average
2014-12-21	835 MHz	6.33	9.55	6.4	9.64	1.11%	0.94%
2014-12-16	1900 MHz	21.4	40.4	21.56	40.4	0.75%	0.00%

9 Measurement Procedures

9.1 Tests to be performed

In order to determine the highest value of the peak spatial-average SAR of a handset, all device positions, configurations and operational modes shall be tested for each frequency band according to steps 1 to 3 below. A flowchart of the test process is shown in picture 9.1.

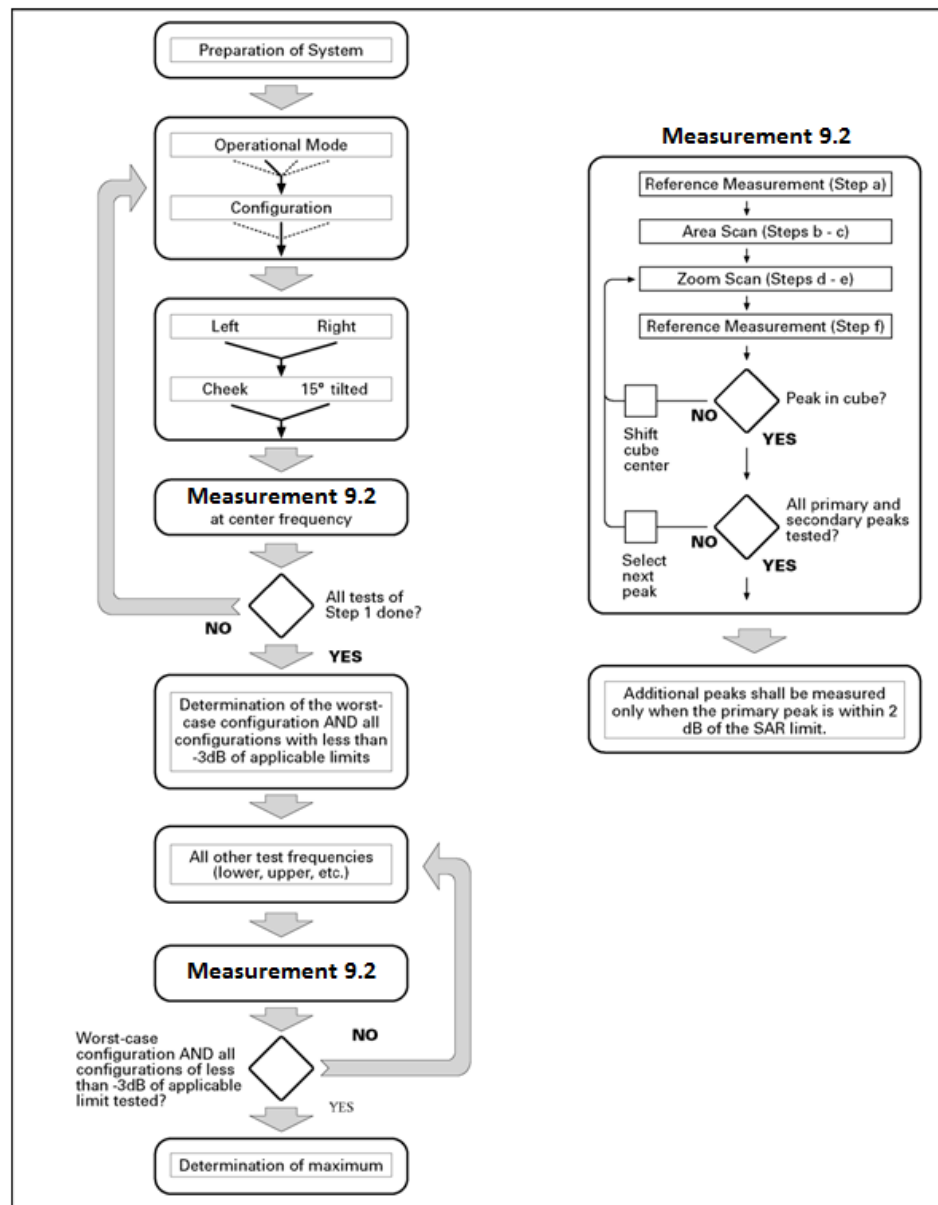
Step 1: The tests described in 9.2 shall be performed at the channel that is closest to the centre of the transmit frequency band (f_c) for:

- a) all device positions (cheek and tilt, for both left and right sides of the SAM phantom, as described in annex D),
- b) all configurations for each device position in a), e.g., antenna extended and retracted, and
- c) all operational modes, e.g., analogue and digital, for each device position in a) and configuration in b) in each frequency band.

If more than three frequencies need to be tested according to 11.1 (i.e., $N_c > 3$), then all frequencies, configurations and modes shall be tested for all of the above test conditions.

Step 2: For the condition providing highest peak spatial-average SAR determined in Step 1, perform all tests described in 9.2 at all other test frequencies, i.e., lowest and highest frequencies. In addition, for all other conditions (device position, configuration and operational mode) where the peak spatial-average SAR value determined in Step 1 is within 3 dB of the applicable SAR limit, it is recommended that all other test frequencies shall be tested as well.

Step 3: Examine all data to determine the highest value of the peak spatial-average SAR found in Steps 1 to 2.



Picture 9.1 Block diagram of the tests to be performed

9.2 General Measurement Procedure

The area and zoom scan resolutions specified in the table below must be applied to the SAR measurements and fully documented in SAR reports to qualify for TCB approval. Probe boundary effect error compensation is required for measurements with the probe tip closer than half a probe tip diameter to the phantom surface. Both the probe tip diameter and sensor offset distance must satisfy measurement protocols; to ensure probe boundary effect errors are minimized and the higher fields closest to the phantom surface can be correctly measured and extrapolated to the phantom surface for computing 1-g SAR. Tolerances of the post-processing algorithms must be verified by the test laboratory for the scan resolutions used in the SAR measurements, according to the reference distribution functions specified in IEEE Std 1528-2003. The results should be documented as part of the system validation records and may be requested to support test results

when all the measurement parameters in the following table are not satisfied.

			≤ 3 GHz	> 3 GHz
Maximum distance from closest measurement point (geometric center of probe sensors) to phantom surface			5 ± 1 mm	$\frac{1}{4} \cdot \delta \cdot \ln(2) \pm 0.5$ mm
Maximum probe angle from probe axis to phantom surface normal at the measurement location			$30^\circ \pm 1^\circ$	$20^\circ \pm 1^\circ$
Maximum area scan spatial resolution: Δx_{Area} , Δy_{Area}			≤ 2 GHz: ≤ 15 mm 2 – 3 GHz: ≤ 12 mm	3 – 4 GHz: ≤ 12 mm 4 – 6 GHz: ≤ 10 mm
			When the x or y dimension of the test device, in the measurement plane orientation, is smaller than the above, the measurement resolution must be \leq the corresponding x or y dimension of the test device with at least one measurement point on the test device.	
Maximum zoom scan spatial resolution: Δx_{Zoom} , Δy_{Zoom}			≤ 2 GHz: ≤ 8 mm 2 – 3 GHz: ≤ 5 mm*	3 – 4 GHz: ≤ 5 mm* 4 – 6 GHz: ≤ 4 mm*
Maximum zoom scan spatial resolution, normal to phantom surface	uniform grid: $\Delta z_{Zoom}(n)$		≤ 5 mm	3 – 4 GHz: ≤ 4 mm 4 – 5 GHz: ≤ 3 mm 5 – 6 GHz: ≤ 2 mm
	graded grid	$\Delta z_{Zoom}(1)$: between 1 st two points closest to phantom surface	≤ 4 mm	3 – 4 GHz: ≤ 3 mm 4 – 5 GHz: ≤ 2.5 mm 5 – 6 GHz: ≤ 2 mm
		$\Delta z_{Zoom}(n>1)$: between subsequent points	$\leq 1.5 \cdot \Delta z_{Zoom}(n-1)$	
Minimum zoom scan volume	x, y, z		≥ 30 mm	3 – 4 GHz: ≥ 28 mm 4 – 5 GHz: ≥ 25 mm 5 – 6 GHz: ≥ 22 mm
Note: δ is the penetration depth of a plane-wave at normal incidence to the tissue medium; see draft standard IEEE P1528-2011 for details.				
* When zoom scan is required and the <u>reported</u> SAR from the area scan based <i>I-g SAR estimation</i> procedures of KDB 447498 is ≤ 1.4 W/kg, ≤ 8 mm, ≤ 7 mm and ≤ 5 mm zoom scan resolution may be applied, respectively, for 2 GHz to 3 GHz, 3 GHz to 4 GHz and 4 GHz to 6 GHz.				

9.3 WCDMA Measurement Procedures for SAR

The following procedures are applicable to WCDMA handsets operating under 3GPP Release99, Release 5 and Release 6. The default test configuration is to measure SAR with an established radio link between the DUT and a communication test set using a 12.2kbps RMC (reference measurement channel) configured in Test Loop Mode 1. SAR is selectively confirmed for other physical channel configurations (DPCCH & DPDCH_n), HSDPA and HSPA (HSUPA/HSDPA) modes according to output power, exposure conditions and device operating capabilities. Both uplink and downlink should be configured with the same RMC or AMR, when required. SAR for Release 5 HSDPA and Release 6 HSPA are measured using the applicable FRC (fixed reference channel) and E-DCH reference channel configurations. Maximum output power is verified according to applicable versions of 3GPP TS 34.121 and SAR must be measured according to these maximum output conditions. When Maximum Power Reduction (MPR) is not implemented according to Cubic Metric (CM) requirements for Release 6 HSPA, the following procedures do not apply.

For Release 5 HSDPA Data Devices:

Sub-test	β_c	β_d	β_d (SF)	β_c / β_d	β_{hs}	CM/dB
1	2/15	15/15	64	2/15	4/15	0.0
2	12/15	15/15	64	12/15	24/25	1.0
3	15/15	8/15	64	15/8	30/15	1.5
4	15/15	4/15	64	15/4	30/15	1.5

For Release 6 HSPA Data Devices

Sub-test	β_c	β_d	β_d (SF)	β_c / β_d	β_{hs}	β_{ec}	β_{ed}	β_{ed} (SF)	β_{ed} (codes)	CM (dB)	MPR (dB)	AG Index	E-TFCI
1	11/15	15/15	64	11/15	22/15	209/225	1039/225	4	1	1.0	0.0	20	75
2	6/15	15/15	64	6/15	12/15	12/15	12/15	4	1	3.0	2.0	12	67
3	15/15	9/15	64	15/9	30/15	30/15	$\beta_{ed1}:47/15$ $\beta_{ed2}:47/15$	4	2	2.0	1.0	15	92
4	2/15	15/15	64	2/15	4/15	4/15	56/75	4	1	3.0	2.0	17	71
5	15/15	15/15	64	15/15	24/15	30/15	134/15	4	1	1.0	0.0	21	81

9.4 Bluetooth & Wi-Fi Measurement Procedures for SAR

Normal network operating configurations are not suitable for measuring the SAR of 802.11 transmitters in general. Unpredictable fluctuations in network traffic and antenna diversity conditions can introduce undesirable variations in SAR results. The SAR for these devices should be measured using chipset based test mode software to ensure that the results are consistent and reliable.

Chipset based test mode software is hardware dependent and generally varies among manufacturers. The device operating parameters established in a test mode for SAR measurements must be identical to those programmed in production units, including output power levels, amplifier gain settings and other RF performance tuning parameters. The test frequencies should correspond to actual channel frequencies defined for domestic use. SAR for devices with switched diversity should be measured with only one antenna transmitting at a time during each SAR measurement, according to a fixed modulation and data rate. The same data pattern should be used for all measurements.

9.5 Power Drift

To control the output power stability during the SAR test, DASY4 system calculates the power drift by measuring the E-field at the same location at the beginning and at the end of the measurement for each test position. These drift values can be found in Table 14.2 to Table 14.23 labeled as: (Power Drift [dB]). This ensures that the power drift during one measurement is within 5%.

10 Area Scan Based 1-g SAR

10.1 Requirement of KDB

According to the KDB447498 D01 v05, when the implementation is based the specific polynomial fit algorithm as presented at the 29th Bioelectromagnetics Society meeting (2007) and the estimated 1-g SAR is ≤ 1.2 W/kg, a zoom scan measurement is not required provided it is also not needed for any other purpose; for example, if the peak SAR location required for simultaneous transmission SAR test exclusion can be determined accurately by the SAR system or manually to discriminate between distinctive peaks and scattered noisy SAR distributions from area scans.

There must not be any warning or alert messages due to various measurement concerns identified by the SAR system; for example, noise in measurements, peaks too close to scan boundary, peaks are too sharp, spatial resolution and uncertainty issues etc. The SAR system verification must also demonstrate that the area scan estimated 1-g SAR is within 3% of the zoom scan 1-g SAR (See Annex B). When all the SAR results for each exposure condition in a frequency band and wireless mode are based on estimated 1-g SAR, the 1-g SAR for the highest SAR configuration must be determined by a zoom scan.

10.2 Fast SAR Algorithms

The approach is based on the area scan measurement applying a frequency dependent attenuation parameter. This attenuation parameter was empirically determined by analyzing a large number of phones. The MOTOROLA FAST SAR was developed and validated by the MOTOROLA Research Group in Ft. Lauderdale.

In the initial study, an approximation algorithm based on Linear fit was developed. The accuracy of the algorithm has been demonstrated across a broad frequency range (136-2450 MHz) and for both 1- and 10-g averaged SAR using a sample of 264 SAR measurements from 55 wireless handsets. For the sample size studied, the root-mean-squared errors of the algorithm are 1.2% and 5.8% for 1- and 10-g averaged SAR, respectively. The paper describing the algorithm in detail is expected to be published in August 2004 within the Special Issue of Transactions on MTT.

In the second step, the same research group optimized the fitting algorithm to an Polynomial fit whereby the frequency validity was extended to cover the range 30-6000MHz. Details of this study can be found in the BEMS 2007 Proceedings.

Both algorithms are implemented in DASY software.

11 Conducted Output Power

11.1 Manufacturing tolerance

Table 11.1: GSM Speech

GSM 850			
Channel	Channel 251	Channel 190	Channel 128
Target (dBm)	32.2	32.2	32.2
Tolerance \pm (dB)	1	1	1
GSM 1900			
Channel	Channel 810	Channel 661	Channel 512
Target (dBm)	29.2	29.2	29.2
Tolerance \pm (dB)	1	1	1

Table 11.2: GPRS and EGPRS

GSM 850 GPRS&EGPRS (GMSK)				
Channel		251	190	128
1 Txslot	Target (dBm)	32.2	32.2	32.2
	Tolerance \pm (dB)	1	1	1
2 Txslots	Target (dBm)	29	29	29
	Tolerance \pm (dB)	1	1	1
GSM 1900 GPRS&EGPRS (GMSK)				
Channel		810	661	512
1 Txslot	Target (dBm)	29.2	29.2	29.2
	Tolerance \pm (dB)	1	1	1
2 Txslots	Target (dBm)	26	26	26
	Tolerance \pm (dB)	1	1	1

Table 11.3: WCDMA

UMTS Band V		Conducted Power (dBm)		
		Channel 4132	Channel 4182	Channel 4233
CS	Target (dBm)	23	23	23
	Tolerance \pm (dB)	1	1	1
HSUPA sub-test 1	Target (dBm)	22	22	22
	Tolerance \pm (dB)	+1/- 2	+1/- 2	+1/- 2
HSUPA sub-test 2-3	Target (dBm)	21	21	21
	Tolerance \pm (dB)	+1/- 2	+1/- 2	+1/- 2
HSUPA sub-test 4	Target (dBm)	22	22	22
	Tolerance \pm (dB)	+1/- 2	+1/- 2	+1/- 2
HSUPA sub-test 5	Target (dBm)	23	23	23
	Tolerance \pm (dB)	+1/- 2	+1/- 2	+1/- 2
HSDPA sub-test 1-4	Target (dBm)	23	23	23
	Tolerance \pm (dB)	+1/- 2	+1/- 2	+1/- 2
UMTS Band I		Conducted Power (dBm)		
		Channel 9612	Channel 9750	Channel 9888
CS	Target (dBm)	23	23	23
	Tolerance \pm (dB)	1	1	1
HSUPA sub-test 1	Target (dBm)	22	22	22
	Tolerance \pm (dB)	+1/- 2	+1/- 2	+1/- 2
HSUPA sub-test 2-3	Target (dBm)	21	21	21
	Tolerance \pm (dB)	+1/- 2	+1/- 2	+1/- 2
HSUPA sub-test 4	Target (dBm)	22	22	22
	Tolerance \pm (dB)	+1/- 2	+1/- 2	+1/- 2
HSUPA sub-test 5	Target (dBm)	23	23	23
	Tolerance \pm (dB)	+1/- 2	+1/- 2	+1/- 2
HSDPA sub-test 1-4	Target (dBm)	23	23	23
	Tolerance \pm (dB)	+1/- 2	+1/- 2	+1/- 2

Table 11.4: Bluetooth

Mode	Target (dBm)	Tolerance \pm (dB)
GFSK	4	2
EDR2M-4_DQPSK	3	2
EDR3M-8DPSK	3	2

11.2 GSM Measurement result

During the process of testing, the EUT was controlled via Agilent Digital Radio Communication tester (E5515C) to ensure the maximum power transmission and proper modulation. This result contains conducted output power for the EUT. In all cases, the measured peak output power should be greater and within 5% than EMI measurement.

Table 11.6: The conducted power measurement results for GSM850/1900

GSM 850MHz	Conducted Power (dBm)		
	Channel 251(848.8MHz)	Channel 190(836.6MHz)	Channel 128(824.2MHz)
	31.81	31.82	31.79
GSM 1900MHz	Conducted Power (dBm)		
	Channel 810(1909.8MHz)	Channel 661(1880MHz)	Channel 512(1850.2MHz)
	28.86	29.37	29.68

Table 11.7: The conducted power measurement results for GPRS and EGPRS

GSM 850 GPRS (GMSK)	Measured Power (dBm)			calculation	Averaged Power (dBm)		
	251	190	128		251	190	128
1 Txslot	31.25	31.21	31.12	-9.03dB	22.22	22.18	22.09
2 Txslots	28.85	28.82	28.76	-6.02dB	22.83	22.8	22.74
PCS1900 GPRS (GMSK)	Measured Power (dBm)			calculation	Averaged Power (dBm)		
	810	661	512		810	661	512
1 Txslot	29.07	29.16	29.21	-9.03dB	20.04	20.13	20.18
2 Txslots	26.03	25.97	25.86	-6.02dB	20.01	19.95	19.84

NOTES:

1) Division Factors

To average the power, the division factor is as follows:

1TX-slot = 1 transmit time slot out of 8 time slots=> conducted power divided by (8/1) => -9.03dB

2TX-slots = 2 transmit time slots out of 8 time slots=> conducted power divided by (8/2) => -6.02dB

According to the conducted power as above, the body measurements are performed with 2Txslots for GSM 850 and 1Txslot for GSM 1900.

11.3 WCDMA Measurement result

Table 11.8: The conducted Power for WCDMA850/2100

UMTS Band V		Conducted Power (dBm)		
		Channel 4132	Channel 4183	Channel 4233
RMC	12.2kbps RMC	23.08	23.11	23.09
HSDPA	Sub - Test 1	23.03	23.14	23.01
	Sub - Test 2	23.01	23.06	23.02
	Sub - Test 3	23.12	23.00	23.06
	Sub - Test 4	23.02	23.17	23.08
HSUPA	Sub Test - 1	21.11	21.26	21.14
	Sub Test - 2	20.06	20.23	20.12
	Sub Test - 3	20.29	21.00	20.68
	Sub Test - 4	21.16	21.45	21.25
	Sub Test - 5	23.38	23.48	23.27
UMTS Band I		Conducted Power (dBm)		
		Channel 9612	Channel 9750	Channel 9888
RMC	12.2kbps RMC	22.88	22.81	22.76
HSDPA	Sub - Test 1	23.05	23.01	22.96
	Sub - Test 2	23.08	23.02	22.94
	Sub - Test 3	23.06	23.10	23.01
	Sub - Test 4	23.11	23.03	22.99
HSUPA	Sub - Test 1	21.21	21.27	21.16
	Sub - Test 2	20.12	20.16	20.25
	Sub - Test 3	20.66	20.65	20.69
	Sub - Test 4	21.45	21.25	21.32
	Sub - Test 5	23.38	23.13	23.09

11.4 Wi-Fi and BT Measurement result

The output power of BT antenna is as following:

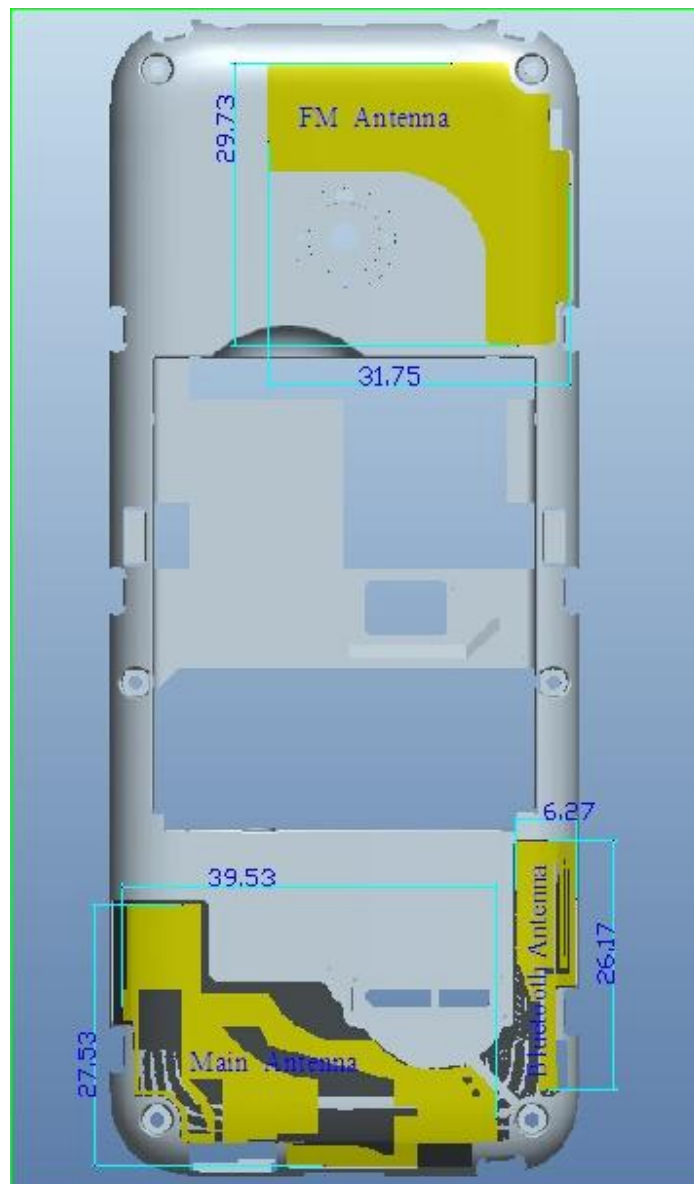
Mode	Conducted Power (dBm)		
	Channel 0 (2402MHz)	Channel 39 (2441MHz)	Channel 78 (2480MHz)
GFSK	4.81	4.80	4.74
EDR2M-4_DQPSK	3.79	3.90	4.00
EDR3M-8DPSK	3.69	3.85	3.93

12 Simultaneous TX SAR Considerations

12.1 Introduction

The following procedures adopted from “FCC SAR Considerations for Cell Phones with Multiple Transmitters” are applicable to handsets with built-in unlicensed transmitters such as 802.11 a/b/g and Bluetooth devices which may simultaneously transmit with the licensed transmitter. For this device, the BT and Wi-Fi can transmit simultaneous with other transmitters.

12.2 Transmit Antenna Separation Distances



Picture 12.1 Antenna Locations

12.3 Standalone SAR Test Exclusion Considerations

Standalone 1-g head or body SAR evaluation by measurement or numerical simulation is not required when the corresponding SAR Exclusion Threshold condition, listed below, is satisfied. The 1-g SAR test exclusion threshold for 100 MHz to 6 GHz at test separation distances ≤ 50 mm are determined by:

$[(\text{max. power of channel, including tune-up tolerance, mW}) / (\text{min. test separation distance, mm})] \cdot [\sqrt{f(\text{GHz})}] \leq 3.0$ for 1-g SAR, where

- $f(\text{GHz})$ is the RF channel transmit frequency in GHz
- Power and distance are rounded to the nearest mW and mm before calculation
- The result is rounded to one decimal place for comparison

Table 12.1: Standalone SAR test exclusion considerations

Band/Mode	F(GHz)	Position	SAR test exclusion threshold (mW)	RF output power		SAR test exclusion
				dBm	mW	
Bluetooth	2.441	Head	9.60	4.81	3.03	Yes
		Body	19.20	4.81	3.03	Yes

13 Evaluation of Simultaneous

Table 13.1: The sum of reported SAR values for main antenna and Bluetooth

	Position	Main antenna	BT*	Sum
Highest reported SAR value for Head	Left hand, Touch cheek	0.83	0.17	1
	Right hand, Touch cheek	1.20	0.17	1.37
Highest reported SAR value for Body	Rear	1.17	0.06	1.23

BT* - Estimated SAR for Bluetooth (see the table 13.2)

Table 13.2: Estimated SAR for Bluetooth

Position	F (GHz)	Distance (mm)	Upper limit of power *		Estimated _{1g} (W/kg)
			dBm	mW	
Head	2.441	5	6	3.98	0.17
Body	2.441	15	6	3.98	0.06

* - Maximum possible output power declared by manufacturer

When standalone SAR test exclusion applies to an antenna that transmits simultaneously with other antennas, the standalone SAR must be estimated according to following to determine simultaneous transmission SAR test exclusion:

(max. power of channel, including tune-up tolerance, mW)/(min. test separation distance, mm)]·[√f(GHz)/x] W/kg for test separation distances ≤ 50 mm;
where x = 7.5 for 1-g SAR.

When the minimum test separation distance is < 5 mm, a distance of 5 mm is applied to determine SAR test exclusion

Conclusion:

According to the above tables, the sum of reported SAR values is < 1.6W/kg. So the simultaneous transmission SAR with volume scans is not required.

14 SAR Test Result

It is determined by user manual for the distance between the EUT and the phantom bottom.

The distance is 15mm and just applied to the condition of body worn accessory.

It is performed for all SAR measurements with area scan based 1-g SAR estimation (Fast SAR). A zoom scan measurement is added when the estimated 1-g SAR is the highest measured SAR in each exposure configuration, wireless mode and frequency band combination or > 1.2W/kg.

The calculated SAR is obtained by the following formula:

$$\text{Reported SAR} = \text{Measured SAR} \times 10^{(P_{\text{Target}} - P_{\text{Measured}})/10}$$

Where P_{Target} is the power of manufacturing upper limit;

P_{Measured} is the measured power in chapter 11.

Table 14.1: Duty Cycle

Mode	Duty Cycle
Speech for GSM850/1900	1:8.3
GPRS for GSM850	1:4
GPRS for GSM1900	1:8.3
WCDMA850/1900 & WiFi	1:1

14.1 SAR results for Fast SAR

Table 14.1: SAR Values (GSM 850 MHz Band - Head)

Ambient Temperature: 22.5 °C						Liquid Temperature: 22.0 °C					
Frequency		Side	Test Position	Figure No.	Conducted Power (dBm)	Max. tune-up Power (dBm)	Measured SAR(10g) (W/kg)	Reported SAR(10g) (W/kg)	Measured SAR(1g) (W/kg)	Reported SAR(1g) (W/kg)	Power Drift (dB)
MHz	Ch.										
836.6	190	Left	Touch	/	31.82	33.2	0.445	0.61	0.614	0.84	-0.12
836.6	190	Left	Tilt	/	31.82	33.2	0.285	0.39	0.421	0.58	-0.02
848.8	251	Right	Touch	Fig.1	31.81	33.2	0.571	0.79	0.785	1.08	0.10
836.6	190	Right	Touch	/	31.82	33.2	0.507	0.70	0.699	0.96	0.13
824.2	128	Right	Touch	/	31.79	33.2	0.398	0.55	0.589	0.81	-0.03
836.6	190	Right	Tilt	/	31.82	33.2	0.276	0.38	0.405	0.56	0.02

Table 14.2: SAR Values (GSM 850 MHz Band - Body)

Frequency		Test Position	Figure No.	Conducted Power (dBm)	Max. tune-up Power (dBm)	Measured SAR(10g) (W/kg)	Reported SAR(10g) (W/kg)	Measured SAR(1g) (W/kg)	Reported SAR(1g) (W/kg)	Power Drift (dB)
MHz	Ch.									
836.6	190	Front	/	28.82	30	0.445	0.58	0.645	0.85	-0.03
848.8	251	Rear	Fig.2	28.85	30	0.642	0.84	0.895	1.17	0.13
836.6	190	Rear	/	28.82	30	0.597	0.78	0.869	1.14	0.03
824.2	128	Rear	/	28.76	30	0.549	0.73	0.798	1.06	0.09
848.8	251	RearHeadset	/	31.81	33.2	0.311	0.43	0.449	0.62	0.16

Note1: The distance between the EUT and the phantom bottom is 15mm

Table 14.3: SAR Values (GSM 1900 MHz Band - Head)

Ambient Temperature: 22.4 °C						Liquid Temperature: 21.9 °C					
Frequency		Side	Test Position	Figure No.	Conducted Power (dBm)	Max. tune-up Power (dBm)	Measured SAR(10g) (W/kg)	Reported SAR(10g) (W/kg)	Measured SAR(1g) (W/kg)	Reported SAR(1g) (W/kg)	Power Drift (dB)
MHz	Ch.										
1909.8	810	Left	Touch	/	28.86	30.2	0.145	0.20	0.223	0.30	0.12
1880	661	Left	Touch	Fig.3	29.37	30.2	0.180	0.22	0.295	0.36	0.14
1850.2	512	Left	Touch	/	29.68	30.2	0.173	0.20	0.266	0.30	0.19
1880	661	Left	Tilt	/	29.37	30.2	0.081	0.10	0.130	0.16	-0.01
1880	661	Right	Touch	/	29.37	30.2	0.183	0.22	0.275	0.33	-0.16
1880	661	Right	Tilt	/	29.37	30.2	0.116	0.14	0.189	0.23	0.04

Table 14.4: SAR Values (GSM 1900 MHz Band - Body)

Frequency		Test Position	Figure No.	Conducted Power (dBm)	Max. tune-up Power (dBm)	Measured SAR(10g) (W/kg)	Reported SAR(10g) (W/kg)	Measured SAR(1g) (W/kg)	Reported SAR(1g) (W/kg)	Power Drift (dB)
MHz	Ch.									
1880	661	Front	/	29.16	30.2	0.082	0.10	0.136	0.17	-0.05
1909.8	810	Rear	/	29.07	30.2	0.268	0.35	0.459	0.60	0.14
1880	661	Rear	/	29.16	30.2	0.274	0.35	0.469	0.60	0.00
1850.2	512	Rear	/	29.21	30.2	0.282	0.35	0.472	0.59	0.18
1850.2	512	RearHeadset	Fig.4	29.21	30.2	0.314	0.39	0.528	0.66	0.06

Note1: The distance between the EUT and the phantom bottom is 15mm.

Table 14.5: SAR Values (WCDMA 850 MHz Band - Head)

Ambient Temperature: 22.5 °C						Liquid Temperature: 22.0 °C					
Frequency		Side	Test Position	Figure No.	Conducted Power (dBm)	Max. tune-up Power (dBm)	Measured SAR(10g) (W/kg)	Reported SAR(10g) (W/kg)	Measured SAR(1g) (W/kg)	Reported SAR(1g) (W/kg)	Power Drift (dB)
MHz	Ch.										
836.4	4182	Left	Touch	/	23.11	24	0.502	0.62	0.703	0.86	-0.01
836.4	4182	Left	Tilt	/	23.11	24	0.330	0.41	0.452	0.55	0.04
846.6	4233	Right	Touch	Fig.5	23.09	24	0.689	0.85	0.970	1.20	0.05
836.4	4182	Right	Touch	/	23.11	24	0.523	0.64	0.732	0.90	0.13
826.4	4132	Right	Touch	/	23.08	24	0.473	0.58	0.660	0.82	0.16
846.6	4233	Right	Tilt	/	23.09	24	0.293	0.36	0.399	0.49	0.04

Table 14.6: SAR Values (WCDMA 850 MHz Band - Body)

Ambient Temperature: 22.5 °C					Liquid Temperature: 22.0 °C					
Frequency		Test Position	Figure No.	Conducted Power (dBm)	Max. tune-up Power (dBm)	Measured SAR(10g) (W/kg)	Reported SAR(10g) (W/kg)	Measured SAR(1g) (W/kg)	Reported SAR(1g) (W/kg)	Power Drift (dB)
MHz	Ch.									
836.4	4182	Front	/	23.11	24	0.399	0.49	0.581	0.71	0.03
846.6	4233	Rear	/	23.09	24	0.532	0.66	0.773	0.95	0.01
836.4	4182	Rear	/	23.11	24	0.474	0.58	0.687	0.84	0.02
826.4	4132	Rear	Fig.6	23.08	24	0.579	0.72	0.799	0.99	-0.04
846.6	4233	RearHeadset	/	23.11	24	0.221	0.27	0.317	0.39	-0.04

Note1: The distance between the EUT and the phantom bottom is 15mm.

Table 14.7: SAR Values (WCDMA 2100 MHz Band - Head)

Ambient Temperature: 22.4 °C						Liquid Temperature: 21.9 °C					
Frequency		Side	Test Position	Figure No.	Conducted Power (dBm)	Max. tune-up Power (dBm)	Measured SAR(10g) (W/kg)	Reported SAR(10g) (W/kg)	Measured SAR(1g) (W/kg)	Reported SAR(1g) (W/kg)	Power Drift (dB)
MHz	Ch.										
1977.6	9888	Left	Touch	/	22. 76	24	0.303	0.37	0.505	0.62	-0.09
1950	9750	Left	Touch	/	22.81	24	0.332	0.41	0.547	0.67	-0.02
1922.4	9612	Left	Touch	Fig.7	22. 88	24	0.410	0.51	0.673	0.83	0.14
1950	9750	Left	Tilt	/	22.81	24	0.147	0.18	0.372	0.46	0.05
1950	9750	Right	Touch	/	22.81	24	0.357	0.44	0.536	0.66	0.13
1922.4	9612	Right	Tilt	/	22. 88	24	0.190	0.25	0.317	0.41	0.06

Table 14.8: SAR Values (WCDMA 2100 MHz Band - Body)

Ambient Temperature: 22.4 °C					Liquid Temperature: 21.9 °C					
Frequency		Test Position	Figure No.	Conducted Power (dBm)	Max. tune-up Power (dBm)	Measured SAR(10g) (W/kg)	Reported SAR(10g) (W/kg)	Measured SAR(1g) (W/kg)	Reported SAR(1g) (W/kg)	Power Drift (dB)
MHz	Ch.									
1950	9750	Front	/	22.81	24	0.153	0.20	0.258	0.34	-0.04
1977.6	9888	Rear	/	22.76	24	0.448	0.60	0.778	1.04	-0.05
1950	9750	Rear	/	22.81	24	0.455	0.59	0.819	1.06	0.08
1922.4	9612	Rear	Fig.8	22.88	24	0.483	0.64	0.830	1.09	-0.05
1922.4	9612	RearHeadset	/	22.88	24	0.429	0.56	0.693	0.90	-0.02

Note1: The distance between the EUT and the phantom bottom is 15mm.

14.2 SAR results for Standard procedure

There is zoom scan measurement to be added for the highest measured SAR in each exposure configuration/band.

Table 14.9: SAR Values (GSM 850 MHz Band - Head)

Ambient Temperature: 22.5 °C						Liquid Temperature: 22.0 °C					
Frequency		Side	Test Position	Figure No.	Conducted Power (dBm)	Max. tune-up Power (dBm)	Measured SAR(10g) (W/kg)	Reported SAR(10g) (W/kg)	Measured SAR(1g) (W/kg)	Reported SAR(1g) (W/kg)	Power Drift (dB)
MHz	Ch.										
848.8	251	Right	Touch	Fig.1	31.81	33.2	0.571	0.79	0.785	1.08	0.10

Table 14.10: SAR Values (GSM 850 MHz Band - Body)

Frequency		Test Position	Figure No.	Conducted Power (dBm)	Max. tune-up Power (dBm)	Measured SAR(10g) (W/kg)	Reported SAR(10g) (W/kg)	Measured SAR(1g) (W/kg)	Reported SAR(1g) (W/kg)	Power Drift (dB)
MHz	Ch.									
848.8	251	Rear	Fig.2	28.85	30	0.642	0.84	0.895	1.17	0.13

Note1: The distance between the EUT and the phantom bottom is 15mm

Table 14.11: SAR Values (GSM 1900 MHz Band - Head)

Ambient Temperature: 22.4 °C						Liquid Temperature: 21.9 °C					
Frequency		Side	Test Position	Figure No.	Conducted Power (dBm)	Max. tune-up Power (dBm)	Measured SAR(10g) (W/kg)	Reported SAR(10g) (W/kg)	Measured SAR(1g) (W/kg)	Reported SAR(1g) (W/kg)	Power Drift (dB)
MHz	Ch.										
1880	661	Left	Touch	Fig.3	29.37	30.2	0.180	0.22	0.295	0.36	0.14

Table 14.12: SAR Values (GSM 1900 MHz Band - Body)

Frequency		Test Position	Figure No.	Conducted Power (dBm)	Max. tune-up Power (dBm)	Measured SAR(10g) (W/kg)	Reported SAR(10g) (W/kg)	Measured SAR(1g) (W/kg)	Reported SAR(1g) (W/kg)	Power Drift (dB)
MHz	Ch.									
1850.2	512	RearHeadset	Fig.4	29.21	30.2	0.314	0.39	0.528	0.66	0.06

Note1: The distance between the EUT and the phantom bottom is 15mm.

Table 14.13: SAR Values (WCDMA 850 MHz Band - Head)

Ambient Temperature: 22.5 °C						Liquid Temperature: 22.0 °C					
Frequency		Side	Test Position	Figure No.	Conducted Power (dBm)	Max. tune-up Power (dBm)	Measured SAR(10g) (W/kg)	Reported SAR(10g) (W/kg)	Measured SAR(1g) (W/kg)	Reported SAR(1g) (W/kg)	Power Drift (dB)
MHz	Ch.										
846.6	4233	Right	Touch	Fig.5	23.09	24	0.689	0.85	0.970	1.20	0.05

Table 14.14: SAR Values (WCDMA 850 MHz Band - Body)

Ambient Temperature: 22.5 °C Liquid Temperature: 22.0 °C										
Frequency		Test Position	Figure No.	Conducted Power (dBm)	Max. tune-up Power (dBm)	Measured SAR(10g) (W/kg)	Reported SAR(10g) (W/kg)	Measured SAR(1g) (W/kg)	Reported SAR(1g) (W/kg)	Power Drift (dB)
MHz	Ch.									
826.4	4132	Rear	Fig.6	23.08	24	0.579	0.72	0.799	0.99	-0.04

Note1: The distance between the EUT and the phantom bottom is 15mm.

Table 14.15: SAR Values (WCDMA 2100 MHz Band - Head)

Ambient Temperature: 22.4 °C						Liquid Temperature: 21.9 °C					
Frequency		Side	Test Position	Figure No.	Conducted Power (dBm)	Max. tune-up Power (dBm)	Measured SAR(10g) (W/kg)	Reported SAR(10g) (W/kg)	Measured SAR(1g) (W/kg)	Reported SAR(1g) (W/kg)	Power Drift (dB)
MHz	Ch.										
1922.4	9612	Left	Touch	Fig.7	22. 88	24	0.410	0.51	0.673	0.83	0.14

Table 14.16: SAR Values (WCDMA 2100 MHz Band - Body)

Ambient Temperature: 22.4 °C					Liquid Temperature: 21.9 °C					
Frequency		Test Position	Figure No.	Conducted Power (dBm)	Max. tune-up Power (dBm)	Measured SAR(10g) (W/kg)	Reported SAR(10g) (W/kg)	Measured SAR(1g) (W/kg)	Reported SAR(1g) (W/kg)	Power Drift (dB)
MHz	Ch.									
1922.4	9612	Rear	Fig.8	22.88	24	0.483	0.64	0.830	1.09	-0.05

Note1: The distance between the EUT and the phantom bottom is 15mm.

15 SAR Measurement Variability

SAR measurement variability must be assessed for each frequency band, which is determined by the SAR probe calibration point and tissue-equivalent medium used for the device measurements. When both head and body tissue-equivalent media are required for SAR measurements in a frequency band, the variability measurement procedures should be applied to the tissue medium with the highest measured SAR, using the highest measured SAR configuration for that tissue-equivalent medium.

The following procedures are applied to determine if repeated measurements are required.

- 1) Repeated measurement is not required when the original highest measured SAR is < 0.80 W/kg; steps 2) through 4) do not apply.
- 2) When the original highest measured SAR is ≥ 0.80 W/kg, repeat that measurement once.
- 3) Perform a second repeated measurement only if the ratio of largest to smallest SAR for the original and first repeated measurements is > 1.20 or when the original or repeated measurement is ≥ 1.45 W/kg ($\sim 10\%$ from the 1-g SAR limit).
- 4) Perform a third repeated measurement only if the original, first or second repeated measurement is ≥ 1.5 W/kg and the ratio of largest to smallest SAR for the original, first and second repeated measurements is > 1.20 .

Table 15.1: SAR Measurement Variability for Head GSM 850 (1g)

Frequency		Test Position	Spacing (mm)	Original SAR (W/kg)	First Repeated SAR (W/kg)	The Ratio	Second Repeated SAR (W/kg)
MHz	Ch.						
848.8	251	Rear	10	0.785	0.769	1.02	/

Table 15.2: SAR Measurement Variability for Body GSM 850 (1g)

Frequency		Test Position	Spacing (mm)	Original SAR (W/kg)	First Repeated SAR (W/kg)	The Ratio	Second Repeated SAR (W/kg)
MHz	Ch.						
848.8	251	Rear	10	0.895	0.875	1.02	/

Table 15.3: SAR Measurement Variability for Head WCDMA 850 (1g)

Frequency		Test Position	Spacing (mm)	Original SAR (W/kg)	First Repeated SAR (W/kg)	The Ratio	Second Repeated SAR (W/kg)
MHz	Ch.						
846.6	4233	Rear	10	0.970	0.948	1.02	/

Table 15.4: SAR Measurement Variability for Body WCDMA 850 (1g)

Frequency		Test Position	Spacing (mm)	Original SAR (W/kg)	First Repeated SAR (W/kg)	The Ratio	Second Repeated SAR (W/kg)
MHz	Ch.						
846.6	4233	Rear	10	0.773	0.762	1.01	/

Table 15.5: SAR Measurement Variability for Head WCDMA 2100 (1g)

Frequency		Test Position	Spacing (mm)	Original SAR (W/kg)	First Repeated SAR (W/kg)	The Ratio	Second Repeated SAR (W/kg)
MHz	Ch.						
1922.4	9612	Rear	10	0.673	0.659	1.02	/

Table 15.6: SAR Measurement Variability for Body WCDMA 2100 (1g)

Frequency		Test Position	Spacing (mm)	Original SAR (W/kg)	First Repeated SAR (W/kg)	The Ratio	Second Repeated SAR (W/kg)
MHz	Ch.						
1922.4	9612	Rear	10	0.830	0.824	1.00	/

16 Measurement Uncertainty

16.1 Measurement Uncertainty for Normal SAR Tests (300MHz~3GHz)

No.	Error Description	Type	Uncertainty value	Probably Distribution	Div.	(Ci) 1g	(Ci) 10g	Std. Unc. (1g)	Std. Unc. (10g)	Degree of freedom
Measurement system										
1	Probe calibration	B	5.5	N	1	1	1	5.5	5.5	∞
2	Isotropy	B	4.7	R	$\sqrt{3}$	0.7	0.7	1.9	1.9	∞
3	Boundary effect	B	1.0	R	$\sqrt{3}$	1	1	0.6	0.6	∞
4	Linearity	B	4.7	R	$\sqrt{3}$	1	1	2.7	2.7	∞
5	Detection limit	B	1.0	N	1	1	1	0.6	0.6	∞
6	Readout electronics	B	0.3	R	$\sqrt{3}$	1	1	0.3	0.3	∞
7	Response time	B	0.8	R	$\sqrt{3}$	1	1	0.5	0.5	∞
8	Integration time	B	2.6	R	$\sqrt{3}$	1	1	1.5	1.5	∞
9	RF ambient conditions-noise	B	0	R	$\sqrt{3}$	1	1	0	0	∞
10	RF ambient conditions-reflection	B	0	R	$\sqrt{3}$	1	1	0	0	∞
11	Probe positioned mech. restrictions	B	0.4	R	$\sqrt{3}$	1	1	0.2	0.2	∞
12	Probe positioning with respect to phantom shell	B	2.9	R	$\sqrt{3}$	1	1	1.7	1.7	∞
13	Post-processing	B	1.0	R	$\sqrt{3}$	1	1	0.6	0.6	∞
Test sample related										
14	Test sample positioning	A	3.3	N	1	1	1	3.3	3.3	71
15	Device holder uncertainty	A	3.4	N	1	1	1	3.4	3.4	5
16	Drift of output power	B	5.0	R	$\sqrt{3}$	1	1	2.9	2.9	∞
Phantom and set-up										
17	Phantom uncertainty	B	4.0	R	$\sqrt{3}$	1	1	2.3	2.3	∞
18	Liquid conductivity (target)	B	5.0	R	$\sqrt{3}$	0.64	0.43	1.8	1.2	∞
19	Liquid conductivity (meas.)	A	2.06	N	1	0.64	0.43	1.32	0.89	43
20	Liquid permittivity (target)	B	5.0	R	$\sqrt{3}$	0.6	0.49	1.7	1.4	∞
21	Liquid permittivity (meas.)	A	1.6	N	1	0.6	0.49	1.0	0.8	521
Combined standard uncertainty		$u_c = \sqrt{\sum_{i=1}^{21} c_i^2 u_i^2}$						9.25	9.12	257
Expanded uncertainty (confidence interval of 95 %)		$u_e = 2u_c$						18.5	18.2	

16.2 Measurement Uncertainty for Fast SAR Tests (300MHz~3GHz)

No.	Error Description	Type	Uncertainty value	Probably Distribution	Div.	(Ci) 1g	(Ci) 10g	Std. Unc. (1g)	Std. Unc. (10g)	Degree of freedom
Measurement system										
1	Probe calibration	B	5.5	N	1	1	1	5.5	5.5	∞
2	Isotropy	B	4.7	R	$\sqrt{3}$	0.7	0.7	1.9	1.9	∞
3	Boundary effect	B	1.0	R	$\sqrt{3}$	1	1	0.6	0.6	∞
4	Linearity	B	4.7	R	$\sqrt{3}$	1	1	2.7	2.7	∞
5	Detection limit	B	1.0	R	$\sqrt{3}$	1	1	0.6	0.6	∞
6	Readout electronics	B	0.3	R	$\sqrt{3}$	1	1	0.3	0.3	∞
7	Response time	B	0.8	R	$\sqrt{3}$	1	1	0.5	0.5	∞
8	Integration time	B	2.6	R	$\sqrt{3}$	1	1	1.5	1.5	∞
9	RF ambient conditions-noise	B	0	R	$\sqrt{3}$	1	1	0	0	∞
10	RF ambient conditions-reflection	B	0	R	$\sqrt{3}$	1	1	0	0	∞
11	Probe positioned mech. Restrictions	B	0.4	R	$\sqrt{3}$	1	1	0.2	0.2	∞
12	Probe positioning with respect to phantom shell	B	2.9	R	$\sqrt{3}$	1	1	1.7	1.7	∞
13	Post-processing	B	1.0	R	$\sqrt{3}$	1	1	0.6	0.6	∞
14	Fast SAR z-Approximation	B	7.0	R	$\sqrt{3}$	1	1	4.0	4.0	∞
Test sample related										
15	Test sample positioning	A	3.3	N	1	1	1	3.3	3.3	71
16	Device holder uncertainty	A	3.4	N	1	1	1	3.4	3.4	5
17	Drift of output power	B	5.0	R	$\sqrt{3}$	1	1	2.9	2.9	∞
Phantom and set-up										
18	Phantom uncertainty	B	4.0	R	$\sqrt{3}$	1	1	2.3	2.3	∞
19	Liquid conductivity (target)	B	5.0	R	$\sqrt{3}$	0.64	0.43	1.8	1.2	∞
20	Liquid conductivity (meas.)	A	2.06	N	1	0.64	0.43	1.32	0.89	43
21	Liquid permittivity (target)	B	5.0	R	$\sqrt{3}$	0.6	0.49	1.7	1.4	∞
22	Liquid permittivity (meas.)	A	1.6	N	1	0.6	0.49	1.0	0.8	521
Combined standard uncertainty		$u'_c = \sqrt{\sum_{i=1}^{22} c_i^2 u_i^2}$						10.1	9.95	257
Expanded uncertainty (confidence interval of 95 %)		$u_e = 2u_c$						20.2	19.9	

17 MAIN TEST INSTRUMENTS

Table 17.1: List of Main Instruments

No.	Name	Type	Serial Number	Calibration Date	Valid Period
01	Network analyzer	Agilent E5071C	MY46103759	December 17,2014	One year
02	Power meter	NRVD	101253	March 8,2014	One year
03	Power sensor	NRV-Z5	100333		
04	Signal Generator	E4438C	MY45095825	January 14, 2014	One year
05	Amplifier	VTL5400	0404	No Calibration Requested	
06	BTS	E5515C	GB47460133	September 4, 2014	One year
07	E-field Probe	SPEAG ES3DV3	3151	September 1, 2014	One year
08	DAE	SPEAG DAE4	786	November 20, 2014	One year
09	Dipole Validation Kit	SPEAG D835V2	4d069	August 28, 2014	Two year
10	Dipole Validation Kit	SPEAG D1800V2	2d145	July 18, 2014	Two year
11	Dipole Validation Kit	SPEAG D1900V2	5d101	July 23, 2014	Two year

END OF REPORT BODY

ANNEX A Graph Results

850 Right Cheek High

Date/Time: 2014-12-1

Electronics: DAE4 Sn786

Medium: 900 Head

Medium parameters used (interpolated): $f = 848.8$ MHz; $\sigma = 0.895$ S/m; $\epsilon_r = 41.961$; $\rho = 1000$ kg/m³

Ambient Temperature: 21.7°C Liquid Temperature: 21.2°C

Communication System: GSM Frequency: 848.8 MHz Duty Cycle: 1:8.3

Probe: ES3DV3 - SN3151 ConvF(6.04, 6.04, 6.04);

Right Cheek High/Area Scan (51x101x1): Interpolated grid: dx=1.000 mm, dy=1.000 mm

Maximum value of SAR (interpolated) = 0.872 W/kg

Right Cheek High/Zoom Scan (7x7x7)/Cube 0: Measurement grid: dx=5mm, dy=5mm, dz=5mm

Reference Value = 12.810 V/m; Power Drift = 0.10 dB

Peak SAR (extrapolated) = 1.00 W/kg

SAR(1 g) = 0.785 W/kg; SAR(10 g) = 0.571 W/kg

Maximum value of SAR (measured) = 0.818 W/kg

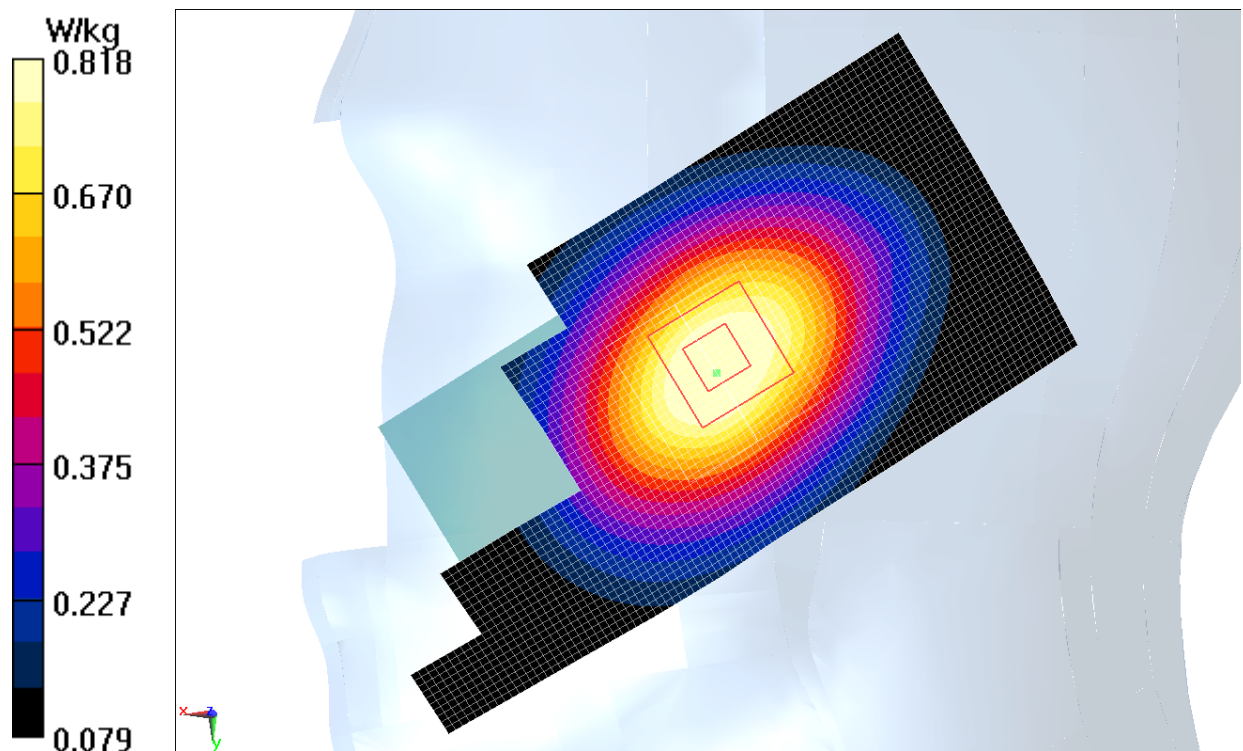


Fig.1 850MHz CH251

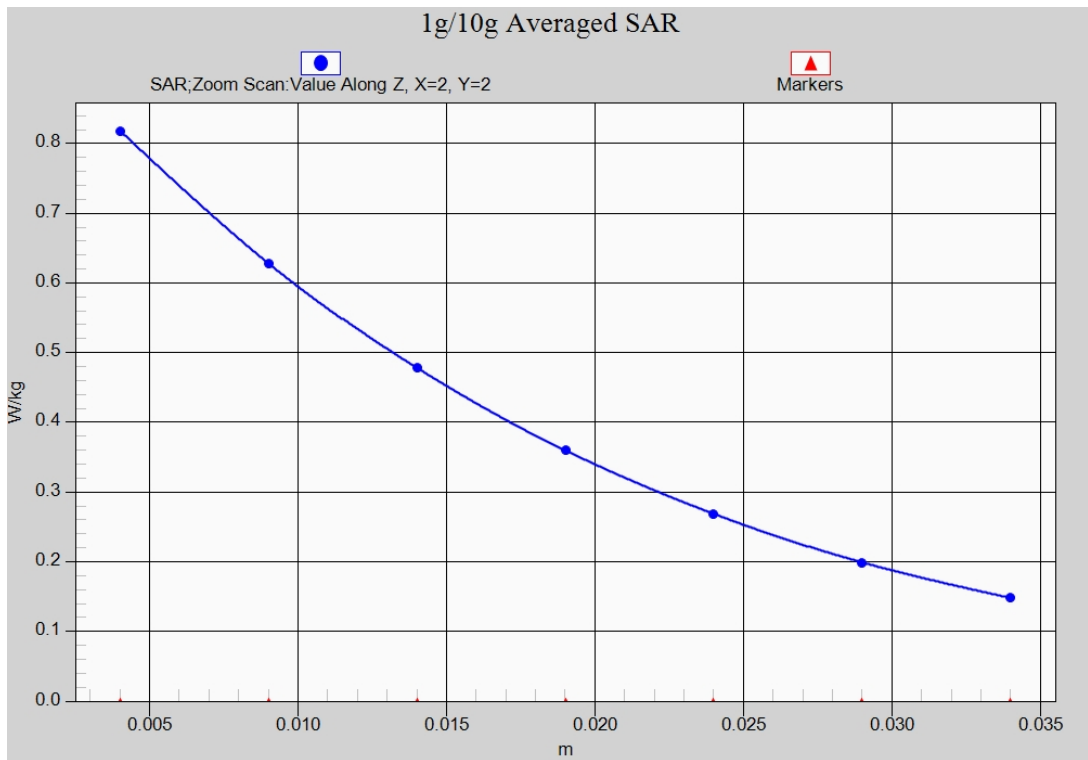


Fig. 1-1 Z-Scan at power reference point (850 MHz CH251)

850 Body Rear High

Date/Time: 2014-12-21

Electronics: DAE4 Sn786

Medium: Body 900

Medium parameters used (interpolated): $f = 848.8$ MHz; $\sigma = 1.01$ S/m; $\epsilon_r = 55.686$; $\rho = 1000$ kg/m³

Ambient Temperature: 21.7°C Liquid Temperature: 21.2°C

Communication System: 2 slot GPRS Frequency: 848.8 MHz Duty Cycle: 1:4

Probe: ES3DV3 - SN3151 ConvF(6.14, 6.14, 6.14);

Rear side High/Area Scan (51x101x1): Interpolated grid: $dx=1.000$ mm, $dy=1.000$ mm
Maximum value of SAR (interpolated) = 0.950 W/kg

Rear side High/Zoom Scan (7x7x7)/Cube 0: Measurement grid: $dx=5$ mm, $dy=5$ mm, $dz=5$ mm

Reference Value = 30.381 V/m; Power Drift = 0.13 dB

Peak SAR (extrapolated) = 1.19 W/kg

SAR(1 g) = 0.895 W/kg; SAR(10 g) = 0.642 W/kg

Maximum value of SAR (measured) = 0.955 W/kg

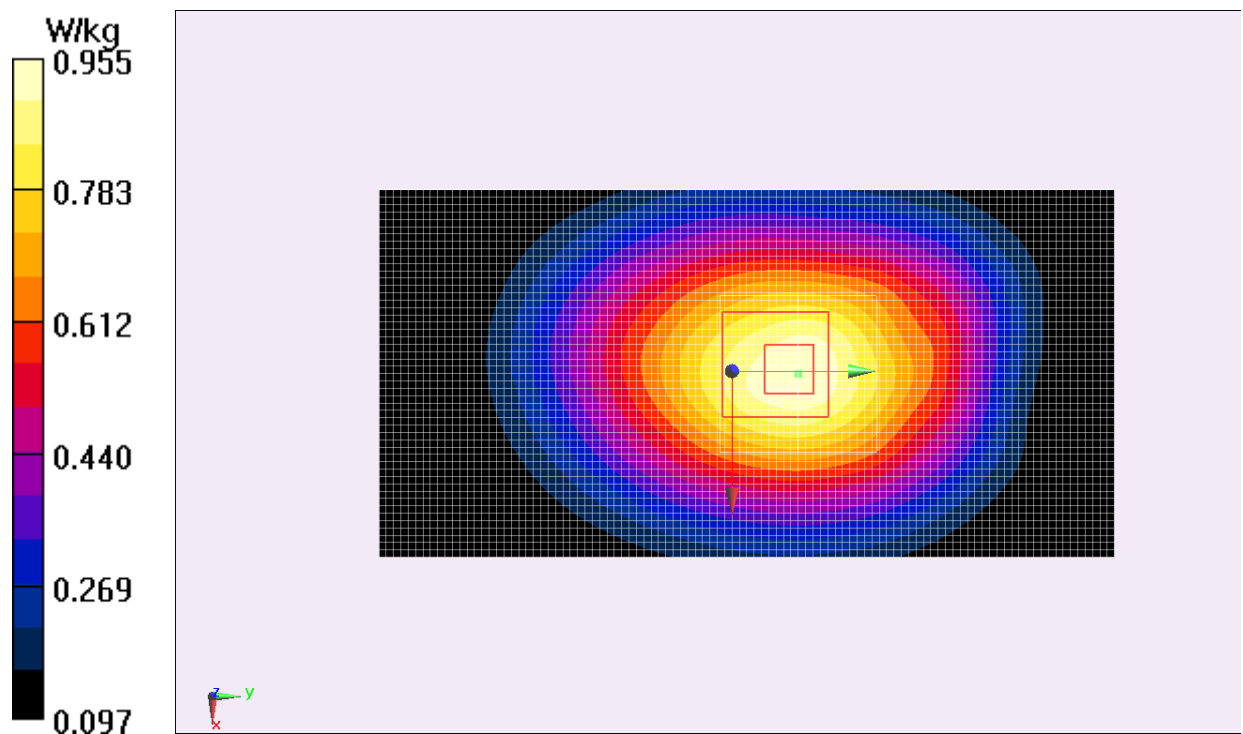


Fig.2 850 MHz CH251

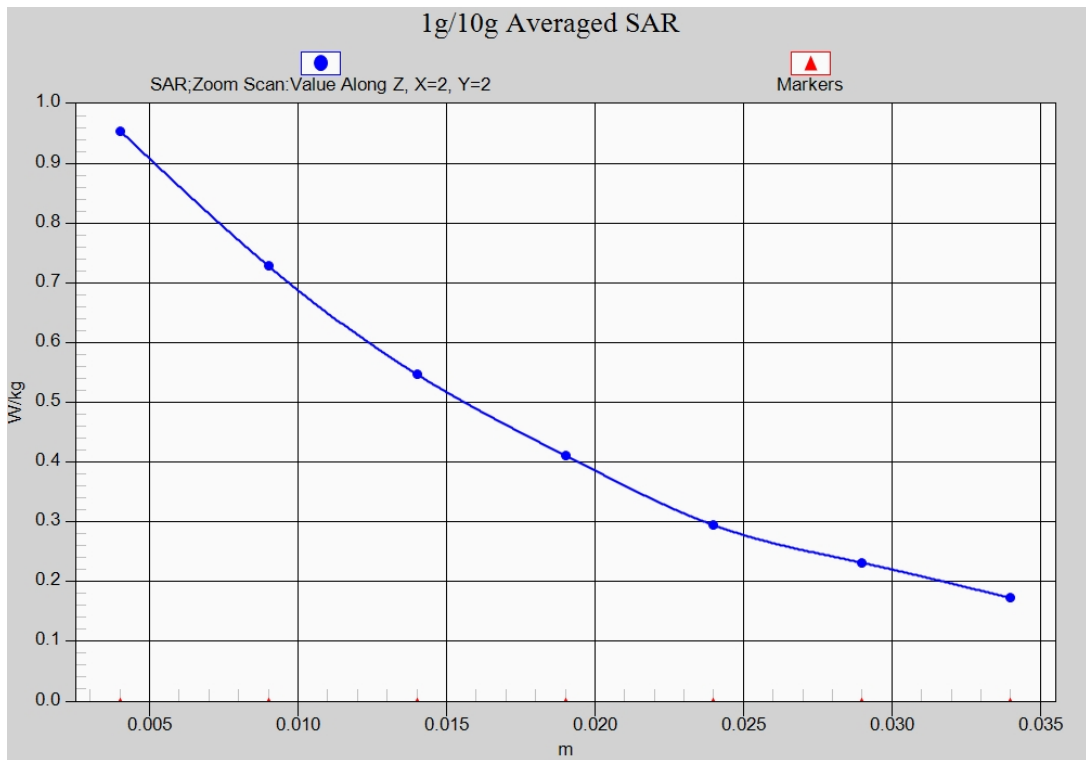


Fig. 2-1 Z-Scan at power reference point (850 MHz CH251)

GSM1900 Left Cheek Middle

Date/Time: 2014-11-26

Electronics: DAE4 Sn679

Medium: 1900 Head

Medium parameters used: $f = 1880$ MHz; $\sigma = 1.421$ S/m; $\epsilon_r = 41.153$; $\rho = 1000$ kg/m³

Ambient Temperature: 21.7°C Liquid Temperature: 21.2°C

Communication System: GSM Frequency: 1880 MHz Duty Cycle: 1:8.3

Probe: ES3DV3 - SN3151 ConvF(5.16, 5.16, 5.16);

Left Cheek Middle/Area Scan (61x101x1): Interpolated grid: $dx=1.000$ mm, $dy=1.000$ mm

Maximum value of SAR (interpolated) = 0.335 W/kg

Left Cheek Middle/Zoom Scan (7x7x7)/Cube 0: Measurement grid: $dx=5$ mm, $dy=5$ mm, $dz=5$ mm

Reference Value = 5.954 V/m; Power Drift = 0.14 dB

Peak SAR (extrapolated) = 0.455 W/kg

SAR(1 g) = 0.295 W/kg; SAR(10 g) = 0.180 W/kg

Maximum value of SAR (measured) = 0.324 W/kg

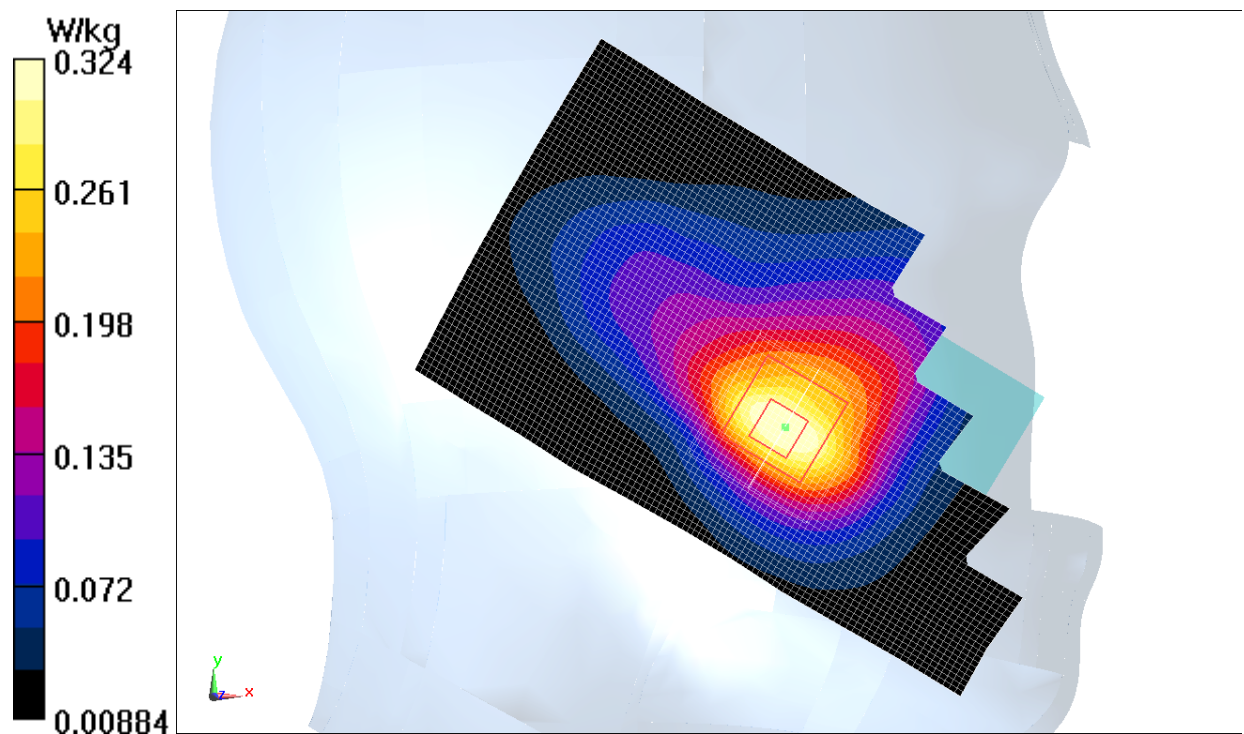


Fig.3 1900 MHz CH661

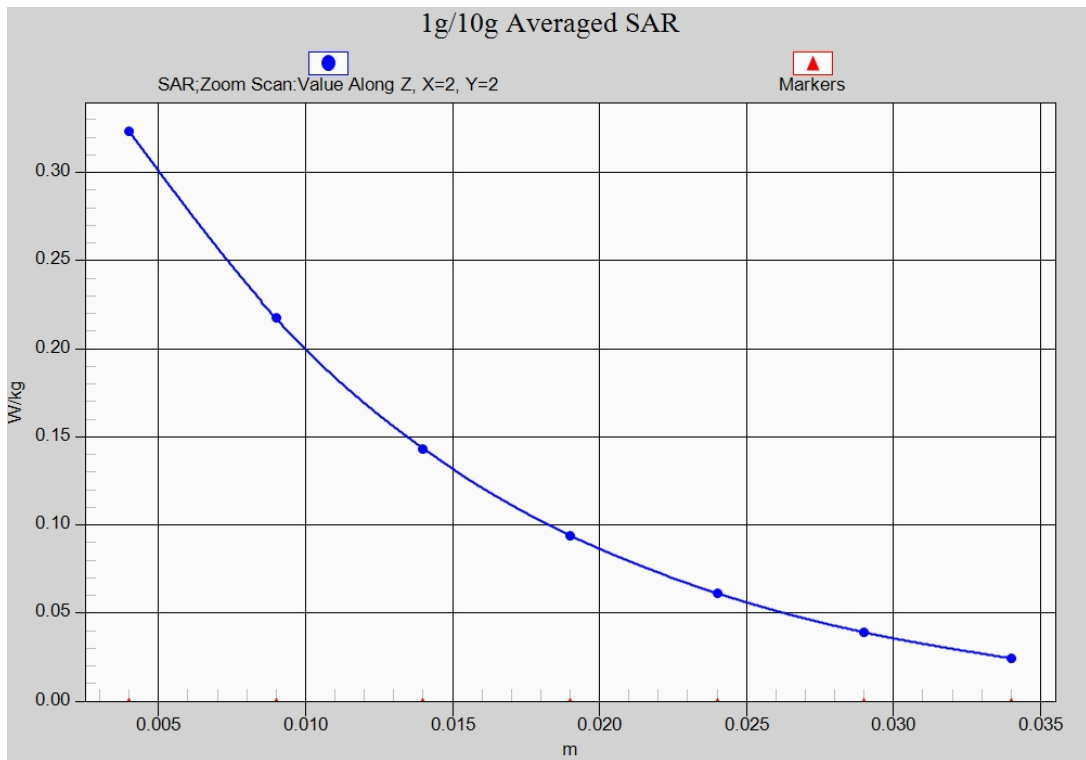


Fig. 3-1 Z-Scan at power reference point (1900 MHz CH661)

GSM1900 Body Rear Low with Headset

Date/Time: 2014-12-16

Electronics: DAE4 Sn786

Medium: Body 1900MHz

Medium parameters used (interpolated): $f = 1850.2$ MHz; $\sigma = 1.47$ S/m; $\epsilon_r = 52.741$; $\rho = 1000$ kg/m³

Ambient Temperature: 21.7°C Liquid Temperature: 21.2°C

Communication System: GSM Frequency: 1850.2 MHz Duty Cycle: 1:8.3

Probe: ES3DV3 - SN3151 ConvF(4.77, 4.77, 4.77);

Rear side Low 15mm Speech/Area Scan (51x101x1): Interpolated grid: dx=1.000 mm, dy=1.000 mm

Maximum value of SAR (interpolated) = 0.589 W/kg

Rear side Low 15mm Speech/Zoom Scan (7x7x7)/Cube 0: Measurement grid:

dx=5mm, dy=5mm, dz=5mm

Reference Value = 7.489 V/m; Power Drift = 0.06 dB

Peak SAR (extrapolated) = 0.854 W/kg

SAR(1 g) = 0.528 W/kg; SAR(10 g) = 0.314 W/kg

Maximum value of SAR (measured) = 0.574 W/kg

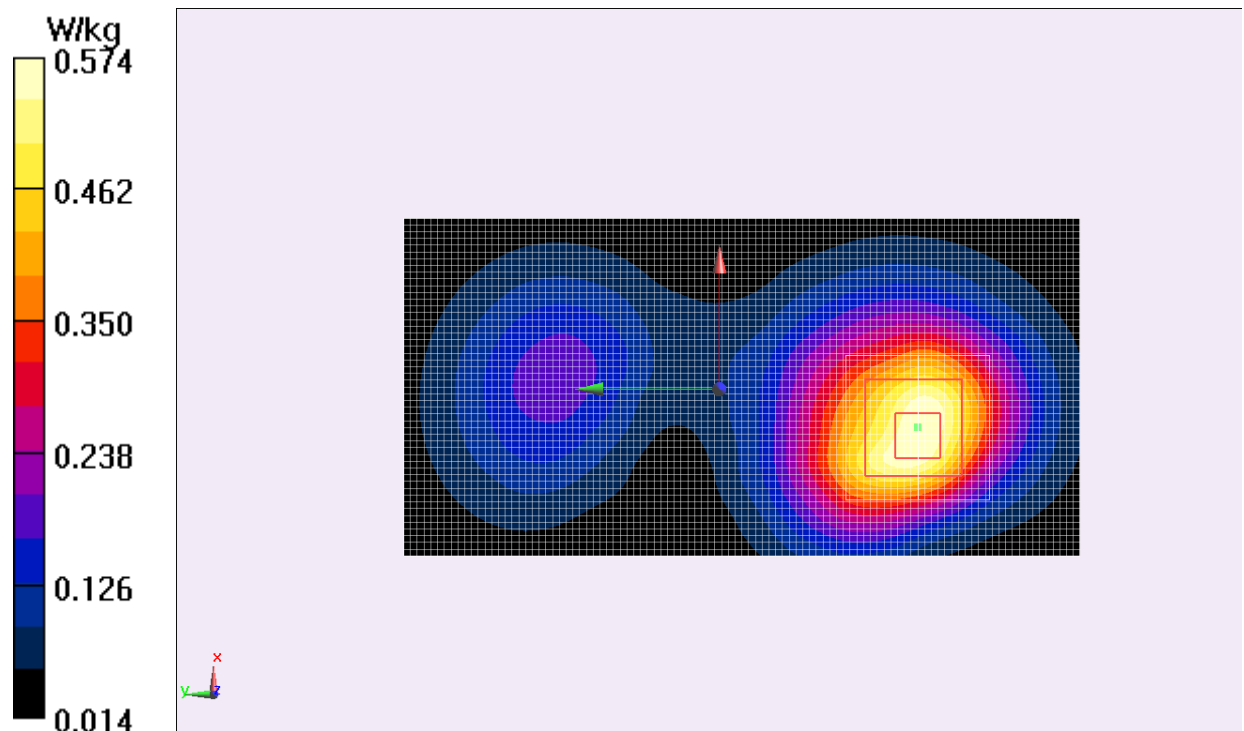


Fig.4 1900 MHz CH512

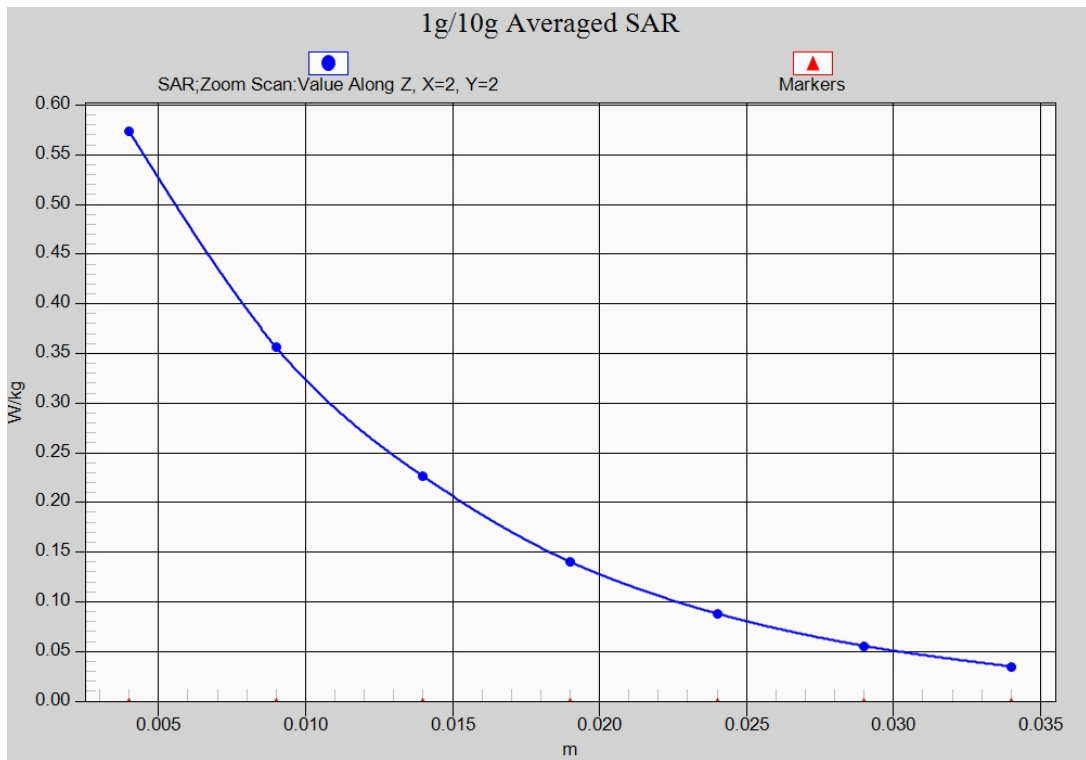


Fig.4-1 Z-Scan at power reference point (1900 MHz CH512)

WCDMA 850 Left Cheek High

Date/Time: 2014-11-27

Electronics: DAE4 Sn679

Medium: Head 900 MHz

Medium parameters used (interpolated): $f = 846.6$ MHz; $\sigma = 0.934$ S/m; $\epsilon_r = 41.721$; $\rho = 1000$ kg/m³

Ambient Temperature: 21.7°C Liquid Temperature: 21.2°C

Communication System: WCDMA Frequency: 846.6 MHz Duty Cycle: 1:1

Probe: ES3DV3 - SN3151 ConvF(6.04, 6.04, 6.04);

Right Cheek High/Area Scan (51x101x1): Interpolated grid: dx=1.000 mm, dy=1.000 mm

Maximum value of SAR (interpolated) = 1.07 W/kg

Right Cheek High/Zoom Scan (7x7x7)/Cube 0: Measurement grid: dx=5mm, dy=5mm, dz=5mm

Reference Value = 10.338 V/m; Power Drift = 0.05 dB

Peak SAR (extrapolated) = 1.28 W/kg

SAR(1 g) = 0.970 W/kg; SAR(10 g) = 0.689 W/kg

Maximum value of SAR (measured) = 1.03 W/kg

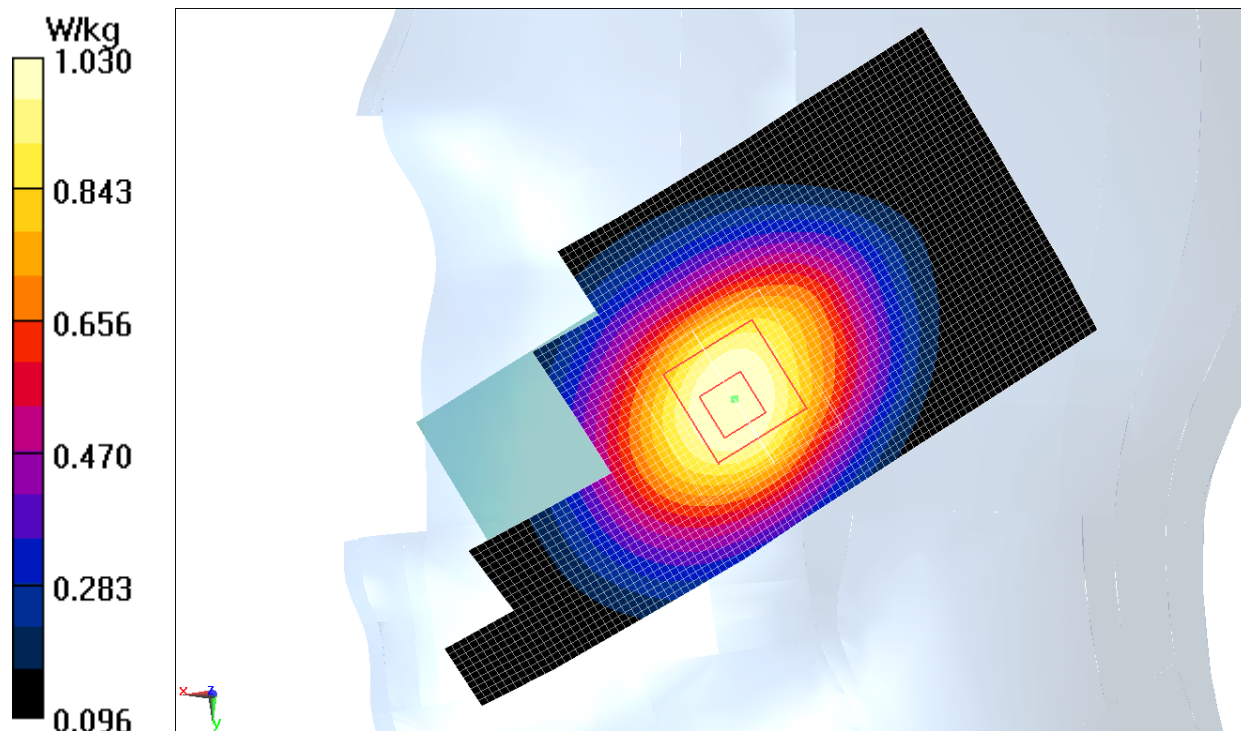


Fig.5 WCDMA 850 CH4233

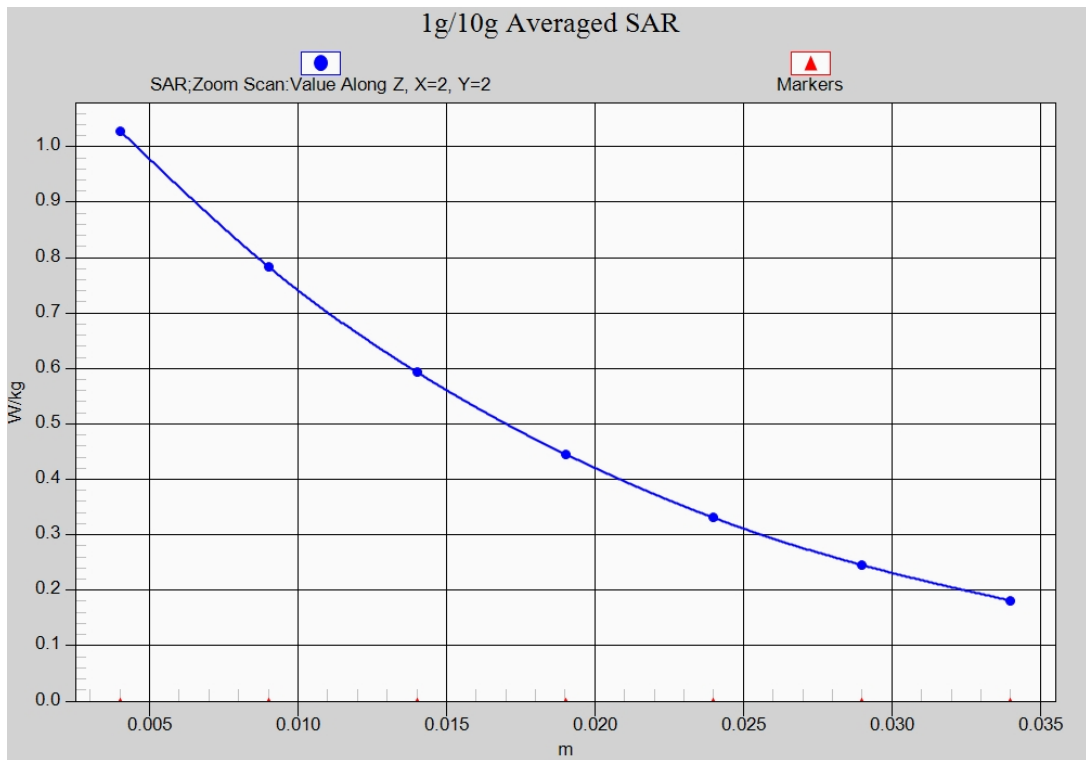


Fig. 5-1 Z-Scan at power reference point (WCDMA 850 CH4233)

WCDMA 850 Body Rear High

Date/Time: 2014-12-22

Electronics: DAE4 Sn786

Medium: Body 900

Medium parameters used (interpolated): $f = 836.6$ MHz; $\sigma = 0.995$ S/m; $\epsilon_r = 55.704$; $\rho = 1000$ kg/m³

Ambient Temperature: 21.7°C Liquid Temperature: 21.2°C

Communication System: WCDMA Frequency: 836.6 MHz Duty Cycle: 1:1

Probe: ES3DV3 - SN3151 ConvF(6.14, 6.14, 6.14);

BODY/Rear side Low 2/Area Scan (51x101x1): Interpolated grid: dx=1.000 mm, dy=1.000 mm

Maximum value of SAR (interpolated) = 0.841 W/kg

BODY/Rear side Low 2/Zoom Scan (7x7x7)/Cube 0: Measurement grid: dx=5mm, dy=5mm, dz=5mm

Reference Value = 28.531 V/m; Power Drift = 0.01 dB

Peak SAR (extrapolated) = 1.03 W/kg

SAR(1 g) = 0.799 W/kg; SAR(10 g) = 0.579 W/kg

Maximum value of SAR (measured) = 0.848 W/kg

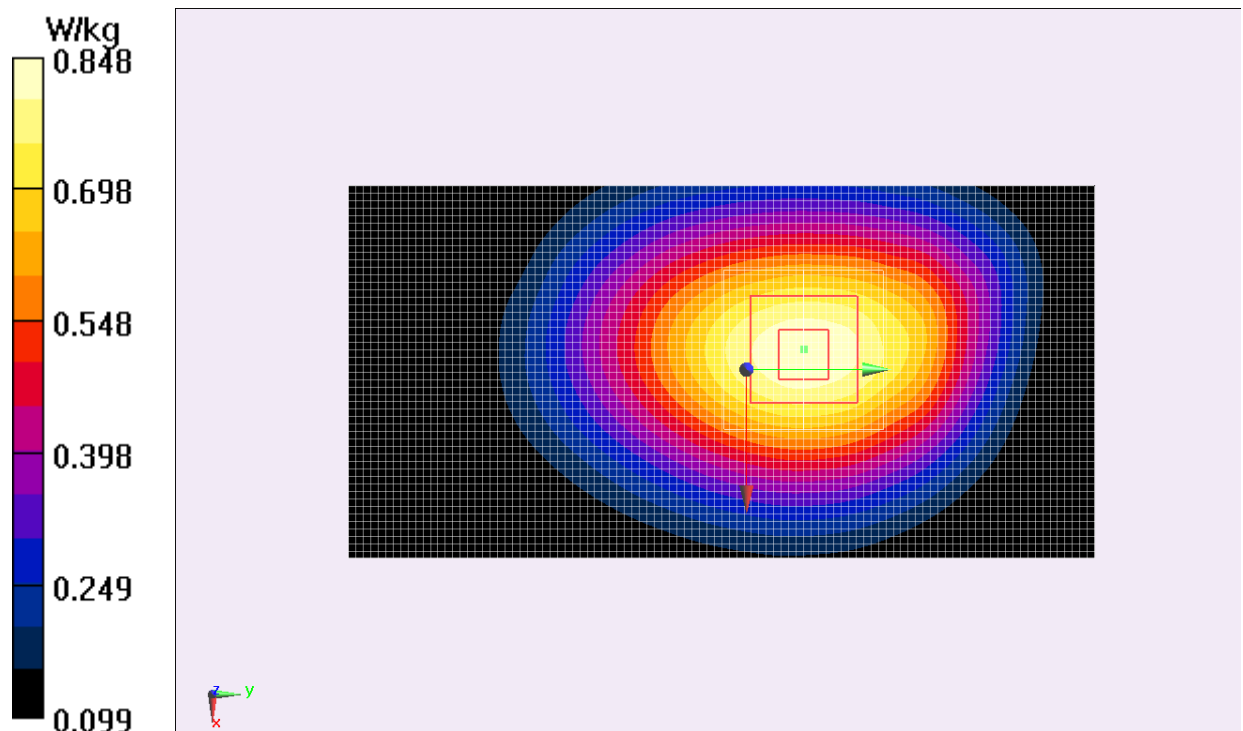


Fig.6 WCDMA 850 CH4132

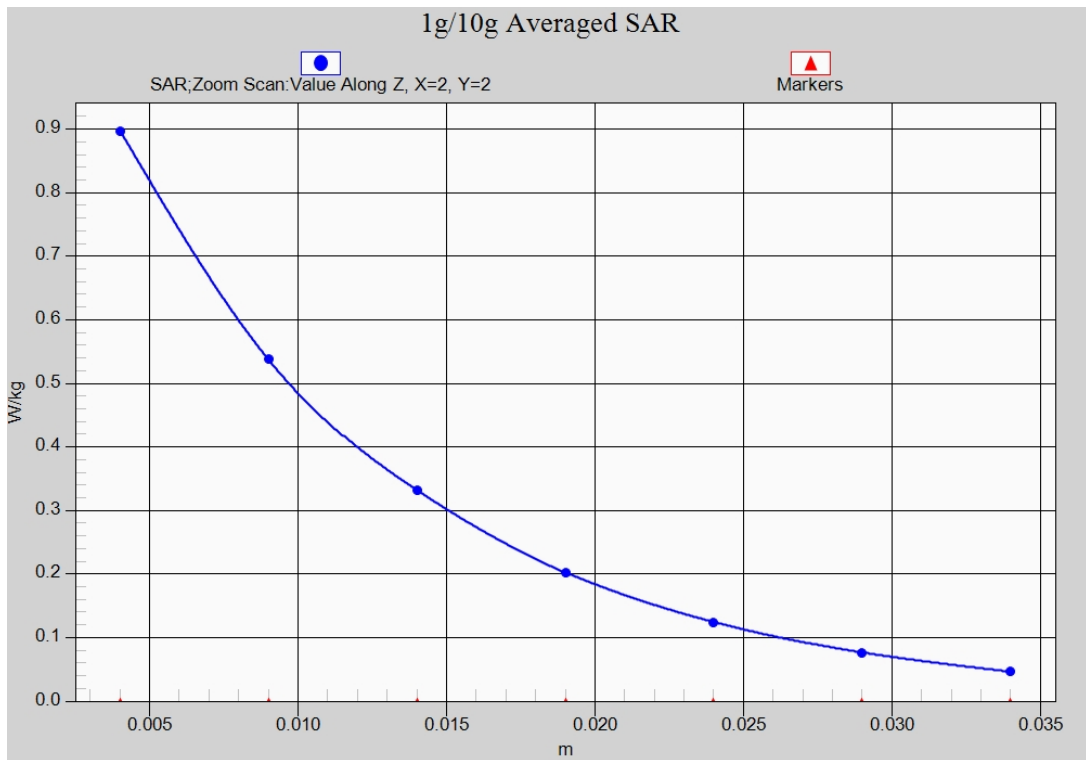


Fig. 6-1 Z-Scan at power reference point (WCDMA850 CH4132)

WCDMA 2100 Left Cheek Low

Date/Time: 2014-11-27

Electronics: DAE4 Sn679

Medium: 1900 Head

Medium parameters used (interpolated): $f = 1922.4$ MHz; $\sigma = 1.535$ S/m; $\epsilon_r = 52.586$; $\rho = 1000$ kg/m³

Ambient Temperature: 21.7°C Liquid Temperature: 21.2°C

Communication System: WCDMA Frequency: 1922.4 MHz Duty Cycle: 1:1

Probe: ES3DV3 - SN3151 ConvF(5.16, 5.16, 5.16);

Left Cheek Low/Area Scan (51x101x1): Interpolated grid: dx=1.000 mm, dy=1.000 mm
Maximum value of SAR (interpolated) = 0.751 W/kg

Left Cheek Low/Zoom Scan (7x7x7)/Cube 0: Measurement grid: dx=5mm, dy=5mm, dz=5mm

Reference Value = 10.169 V/m; Power Drift = 0.14 dB

Peak SAR (extrapolated) = 1.05 W/kg

SAR(1 g) = 0.673 W/kg; SAR(10 g) = 0.410 W/kg

Maximum value of SAR (measured) = 0.724 W/kg

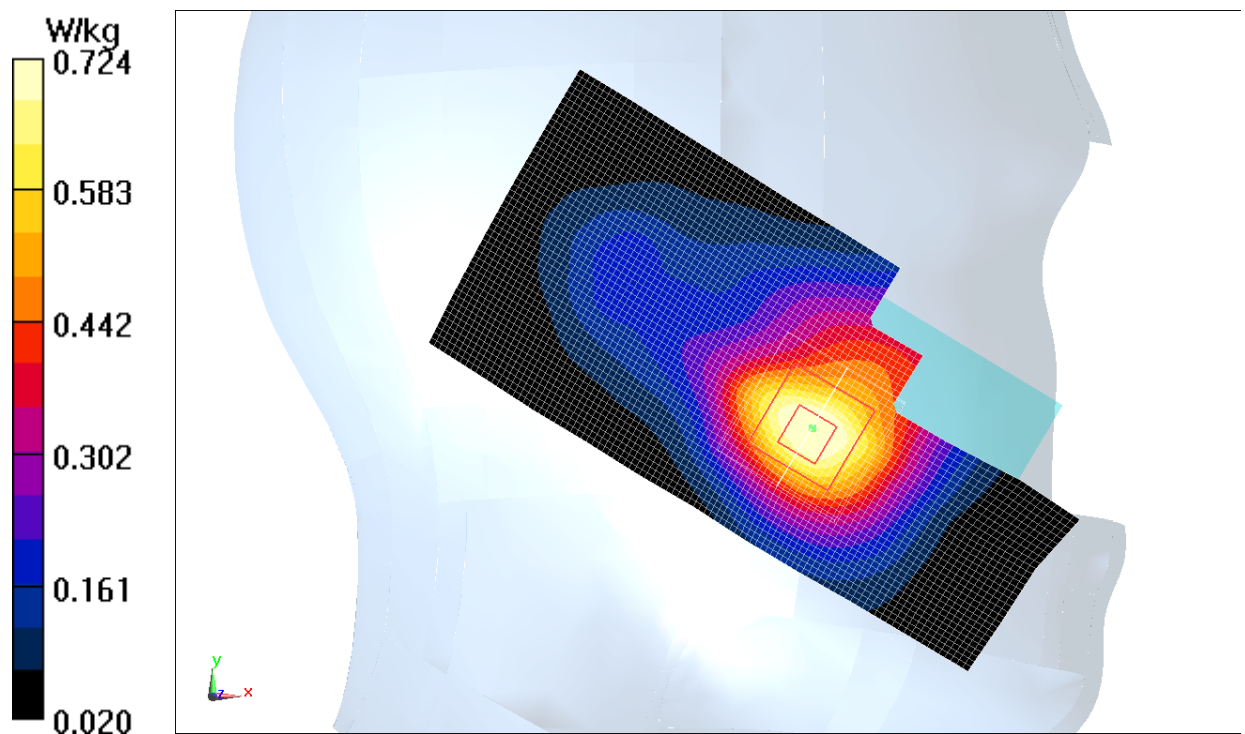


Fig.7 WCDMA2100 CH9612

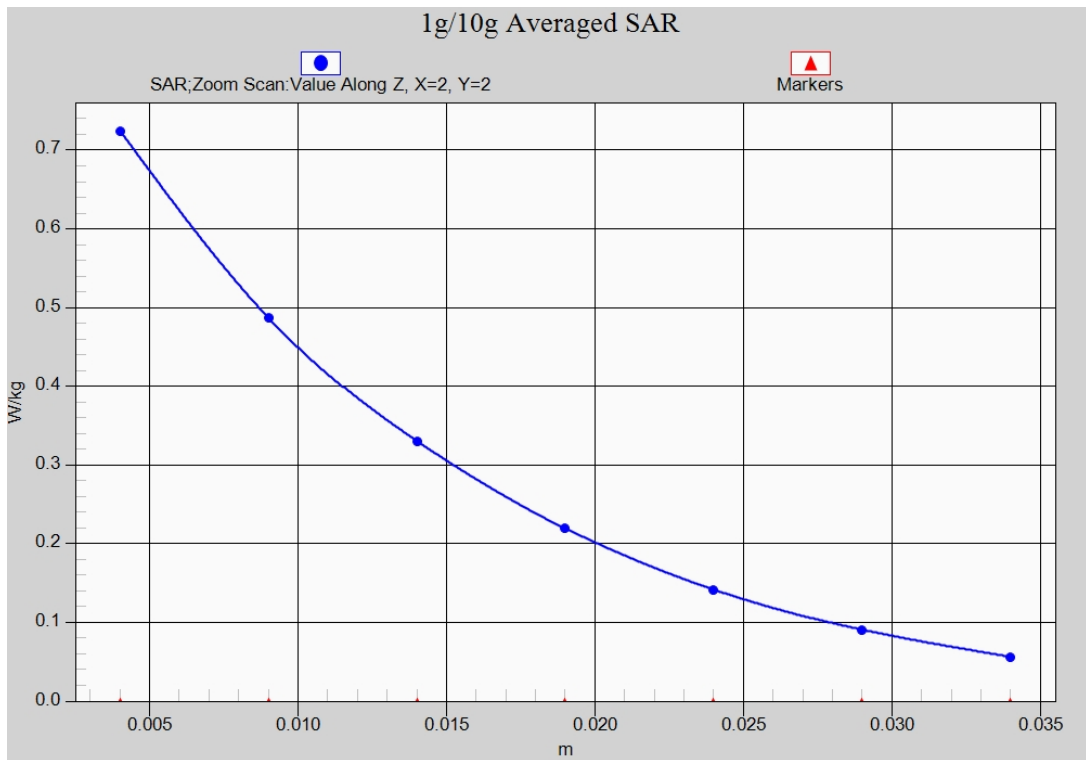


Fig. 7-1 Z-Scan at power reference point (WCDMA2100 CH9612)

WCDMA 2100 Body Rear Low

Date/Time: 2014-12-16

Electronics: DAE4 Sn786

Medium: Body 1900MHz

Medium parameters used (interpolated): $f = 1922.4$ MHz; $\sigma = 1.567$ S/m; $\epsilon_r = 52.562$; $\rho = 1000$ kg/m³

Ambient Temperature: 21.7°C Liquid Temperature: 21.2°C

Communication System: WCDMA Frequency: 1922.4 MHz Duty Cycle: 1:1

Probe: ES3DV3 - SN3151 ConvF(4.77, 4.77, 4.77);

Rear side Low 15mm/Area Scan (51x101x1): Interpolated grid: dx=1.000 mm, dy=1.000 mm

Maximum value of SAR (interpolated) = 0.920 W/kg

Rear side Low 15mm/Zoom Scan (7x7x7)/Cube 0: Measurement grid: dx=5mm, dy=5mm, dz=5mm

Reference Value = 10.355 V/m; Power Drift = -0.05 dB

Peak SAR (extrapolated) = 1.41 W/kg

SAR(1 g) = 0.830 W/kg; SAR(10 g) = 0.483 W/kg

Maximum value of SAR (measured) = 0.897 W/kg

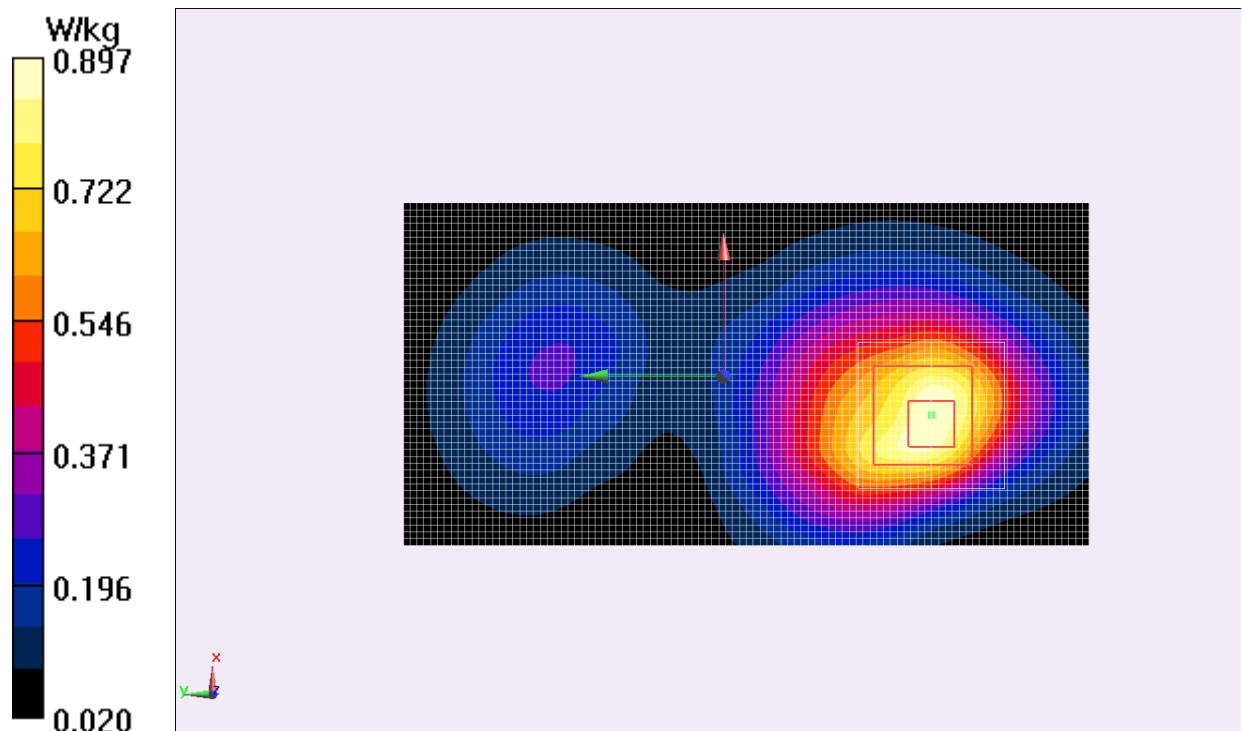


Fig.8 WCDMA2100 CH9612

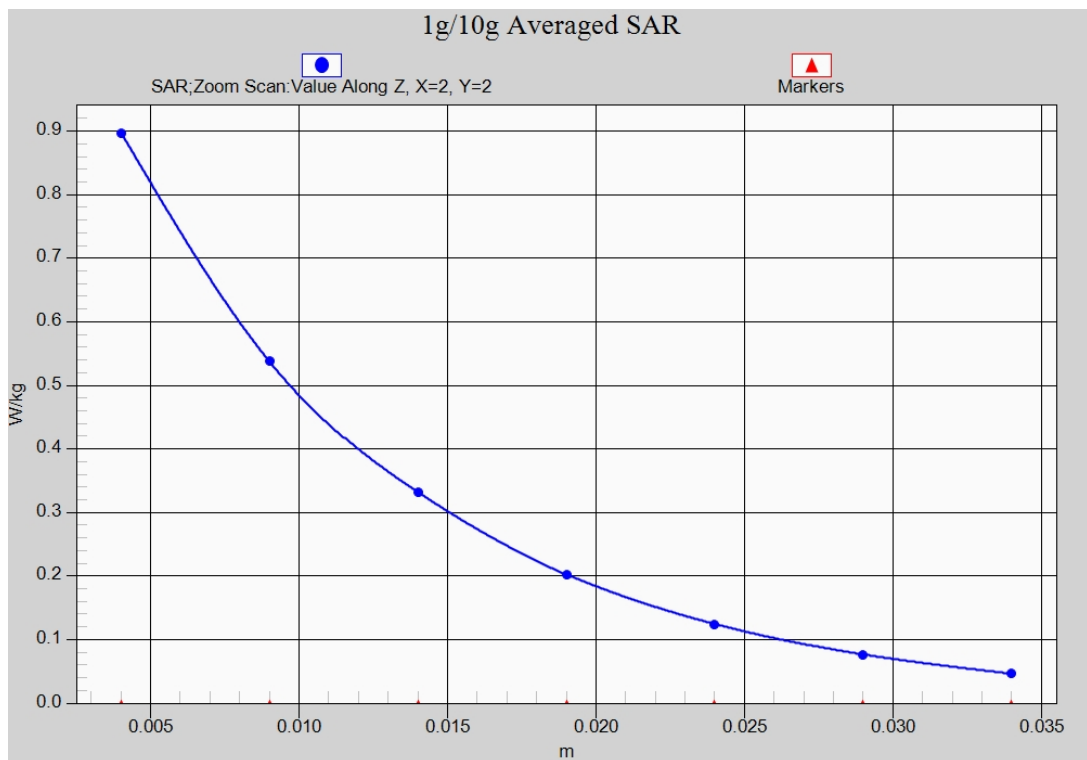


Fig. 8-1 Z-Scan at power reference point (WCDMA2100 CH9612)

ANNEX B System Verification Results

835MHz

Date/Time: 2014-11-26

Electronics: DAE4 Sn786

Medium: Head 900

Medium parameters used (interpolated): $f = 835$ MHz; $\sigma = 0.909$ mho/m; $\epsilon_r = 41.648$; $\rho = 1000$ kg/m³

Ambient Temperature: 23.7°C Liquid Temperature: 23.2°C

Communication System: CW_TMC Frequency: 835 MHz Duty Cycle: 1:1

Probe: ES3DV3 - SN3151 ConvF(6.04, 6.04, 6.04);

System Validation /Area Scan (81x161x1): Measurement grid: dx=10mm, dy=10mm

Reference Value = 51.802 V/m; Power Drift = 0.10 dB

SAR(1 g) = 2.43 W/kg; SAR(10 g) = 1.58 W/kg

Maximum value of SAR (interpolated) = 2.62 mW/g

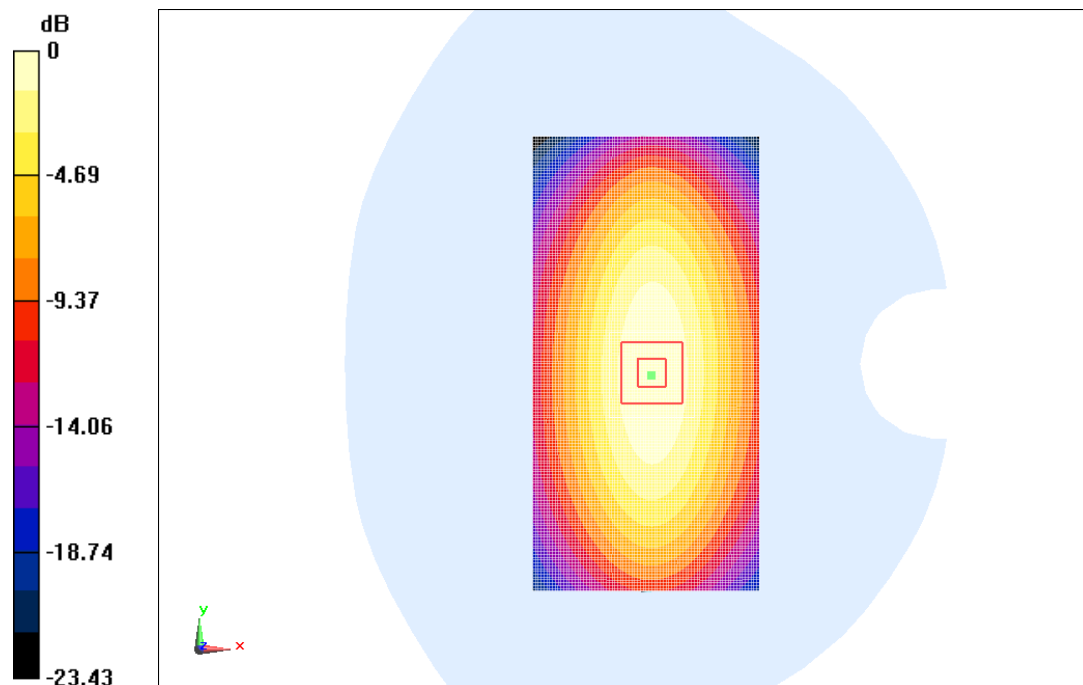
System Validation /Zoom Scan (7x7x7)/Cube 0: Measurement grid: dx=5mm, dy=5mm, dz=5mm

Reference Value = 51.802 V/m; Power Drift = 0.10 dB

Peak SAR (extrapolated) = 3.63 W/kg

SAR(1 g) = 2.46 mW/g; SAR(10 g) = 1.61 mW/g

Maximum value of SAR (measured) = 2.67 mW/g



0 dB = 2.62 mW/g = 8.37 dB mW/g

Fig.B.1 validation 835MHz 250mW

835MHz

Date: 2014-12-21

Electronics: DAE4 Sn786

Medium: Body 850 MHz

Medium parameters used: $f = 835$ MHz; $\sigma = 0.989$ mho/m; $\epsilon_r = 55.564$; $\rho = 1000$ kg/m³

Ambient Temperature: 22.5°C Liquid Temperature: 22.0°C

Communication System: CW Frequency: 835 MHz Duty Cycle: 1:1

Probe: ES3DV3 - SN3151 ConvF(6.14, 6.14, 6.14);

System Validation /Area Scan (81x171x1): Interpolated grid: dx=1.000 mm, dy=1.000 mm

Reference Value = 51.811 V/m; Power Drift = 0.08 dB

Fast SAR: SAR(1 g) = 2.37 W/kg; SAR(10 g) = 1.58 W/kg

Maximum value of SAR (interpolated) = 2.61 W/kg

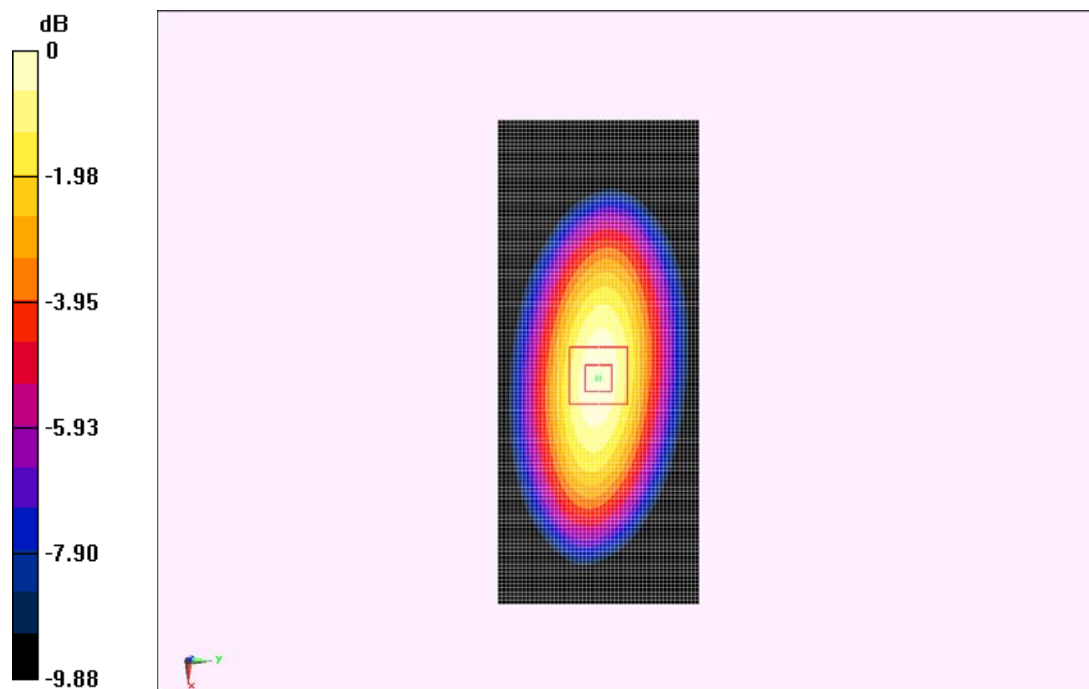
System Validation /Zoom Scan (7x7x7)/Cube 0: Measurement grid: dx=5mm, dy=5mm, dz=5mm

Reference Value = 51.811 V/m; Power Drift = 0.08 dB

Peak SAR (extrapolated) = 3.43 W/kg

SAR(1 g) = 2.41 W/kg; SAR(10 g) = 1.6 W/kg

Maximum value of SAR (measured) = 2.63 W/kg



0 dB = 2.61 W/kg = 8.33 dBW/kg

Fig.B.2 validation 835MHz 250mW

1900MHz

Date/Time: 2014-11-27

Electronics: DAE4 Sn786

Medium: Head 1900 MHz

Medium parameters used: $f = 1900$ MHz; $\sigma = 1.441$ S/m; $\epsilon_r = 41.07$; $\rho = 1000$ kg/m³

Ambient Temperature: 23.7°C Liquid Temperature: 23.2°C

Communication System: CW_TMC Frequency: 1900 MHz Duty Cycle: 1:1

Probe: ES3DV3 - SN3151 ConvF(5.16, 5.16, 5.16);

System Validation/Area Scan (81x121x1): Interpolated grid: $dx=1.000$ mm, $dy=1.000$ mm

Reference Value = 94.388 V/m; Power Drift = 0.05 dB

Fast SAR: SAR(1 g) = 9.97 W/kg; SAR(10 g) = 5.3 W/kg

Maximum value of SAR (interpolated) = 11.3 W/kg

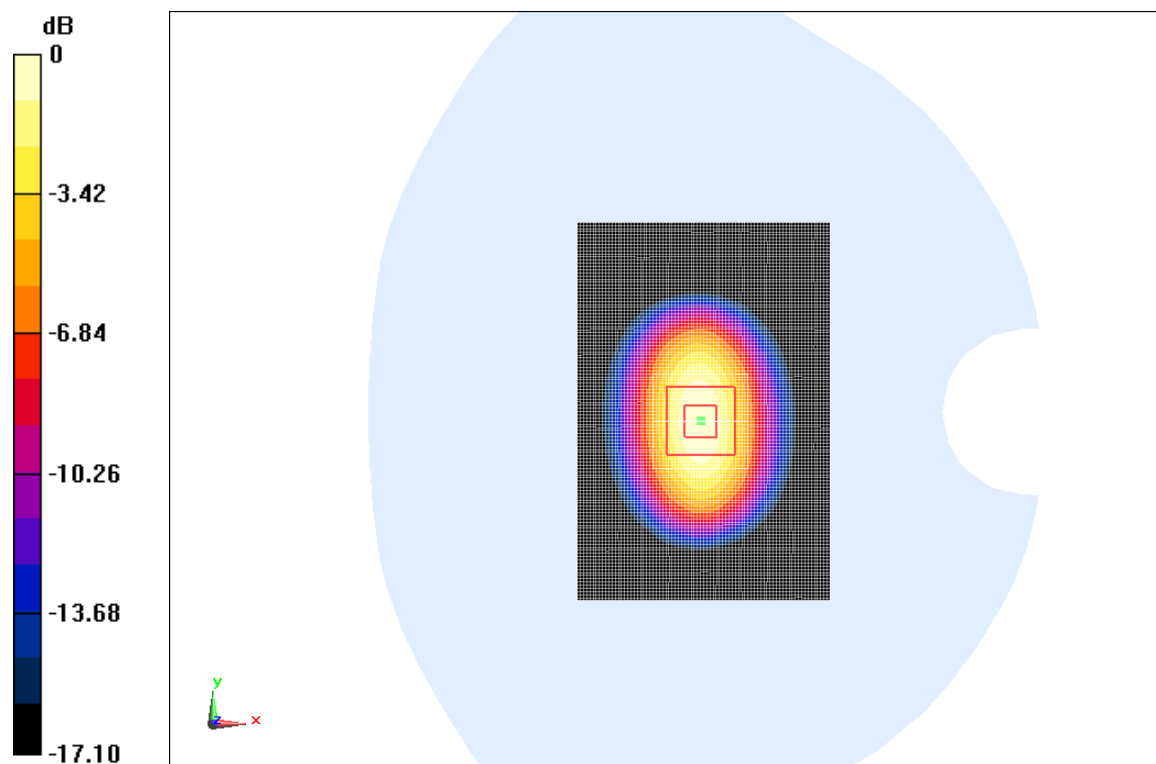
System Validation/Zoom Scan (7x7x7)/Cube 0: Measurement grid: $dx=5$ mm, $dy=5$ mm, $dz=5$ mm

Reference Value = 94.388 V/m; Power Drift = -0.08 dB

Peak SAR (extrapolated) = 17.76 W/kg

SAR(1 g) = 9.87 W/kg; SAR(10 g) = 5.22 W/kg

Maximum value of SAR (measured) = 11.2 W/kg



0 dB = 11.3 W/kg = 21.06 dB W/kg

Fig.B.4 validation 1900MHz 250mW

1900MHz

Date: 2014-12-16

Electronics: DAE4 Sn786

Medium: Body 1900 MHz

Medium parameters used: $f = 1900$ MHz; $\sigma = 1.512$ mho/m; $\epsilon_r = 52.678$; $\rho = 1000$ kg/m³

Ambient Temperature: 22.4°C Liquid Temperature: 21.9°C

Communication System: CW Frequency: 1900 MHz Duty Cycle: 1:1

Probe: ES3DV3 - SN3151 ConvF(4.77, 4.77, 4.77);

System Validation/Area Scan (81x121x1): Interpolated grid: dx=1.000 mm, dy=1.000 mm

Reference Value = 84.861 V/m; Power Drift = -0.07 dB

Fast SAR: SAR(1 g) = 9.99 W/kg; SAR(10 g) = 5.33 W/kg

Maximum value of SAR (interpolated) = 11.2 W/kg

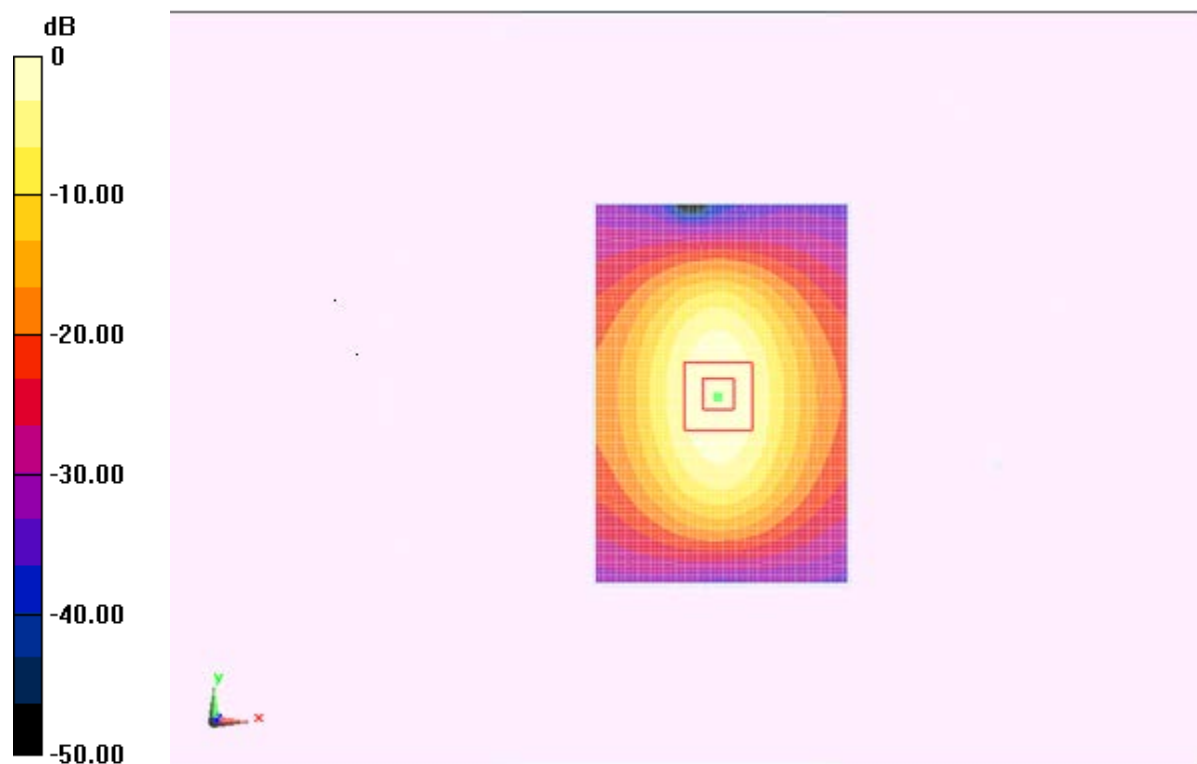
System Validation/Zoom Scan (7x7x7)/Cube 0: Measurement grid: dx=5mm, dy=5mm, dz=5mm

Reference Value = 84.861 V/m; Power Drift = -0.07 dB

Peak SAR (extrapolated) = 17.43 W/kg

SAR(1 g) = 10.1 W/kg; SAR(10 g) = 5.39 W/kg

Maximum value of SAR (measured) = 11.4 W/kg



0 dB = 11.2 W/kg = 20.98 dBW/kg

Fig.B.4 validation 1900MHz 250mW