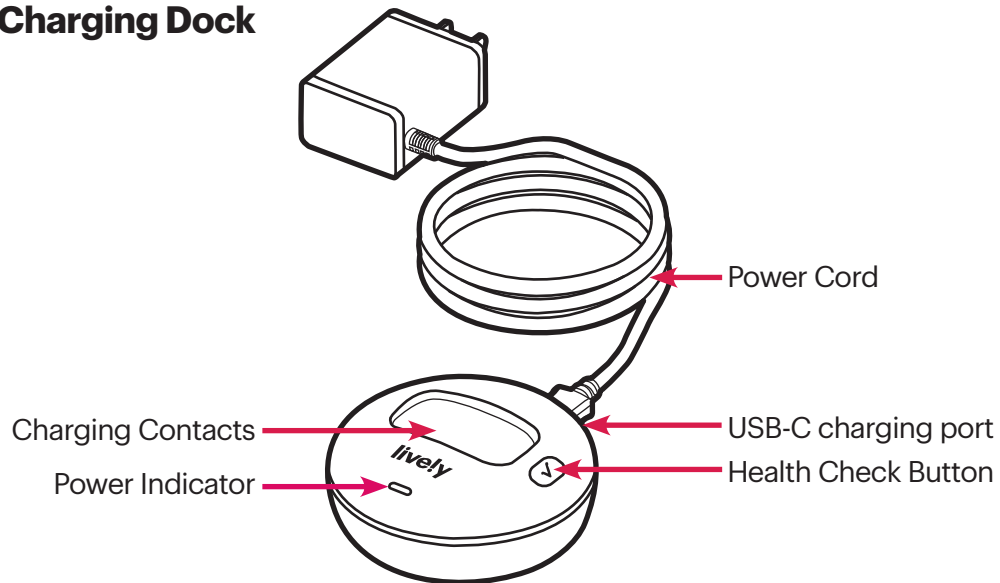


The Charging Dock



The Charging Dock (continued)

- **Power Cord** – Provides power to the charging dock from a wall outlet.
- **Power Indicator** – Lights up green when plugged into a wall outlet and blinks green when charging the Lively Mobile2.
- **Charging Contacts** – Allows charging of your Lively Mobile2 when docked.
- **Health Check Button** – Check that your Lively Mobile2 is operating correctly.

INFORMATION You can check the status of your Lively Mobile2 anytime by placing your device in the charging dock and pressing the Health Check Button. This will confirm your battery, network connection and Fall Detection (if applicable) are working properly and your device is ready to use.

IMPORTANT The charging dock is not waterproof. Do not place the charging dock in areas where it can get wet. If your device happens to get wet, please be sure to dry it before placing it into the charging dock. Failure to do so may cause an electrical shock or fire hazard. The Lively Mobile2 is tested and specified to a IPX7 rating, meaning it may be gently submerged in up to 3.3 feet of water for up to 30 minutes. In the event your device becomes wet, be sure to dry it as soon as possible, especially before placing into the charging dock. Water in device may impact the audio of the two-way speaker. Gently shake device to dislodge water.

The Charging Dock (continued)

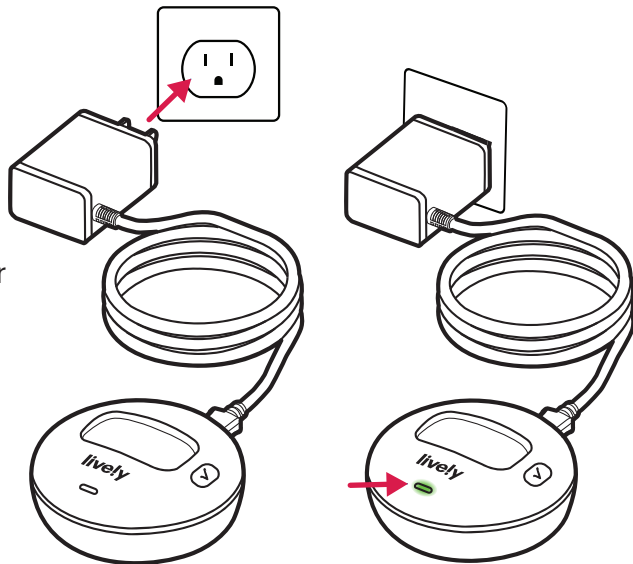
Setting Up the Charging Dock

The charging dock makes it easy for you to always have your Lively Mobile2 fully charged and ready to go.

1. Determine where you would like to place your charging dock. Do not place the charging dock in a location where it could get wet.
2. Plug the power cord's USB-C connector into the back of the charging dock.
3. Plug the power cord into a wall outlet. The power indicator on the charging dock illuminates green.

NOTE

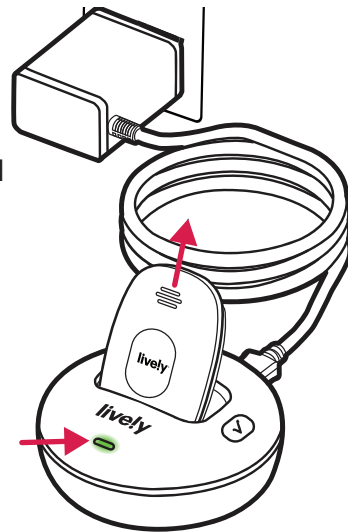
If the power indicator doesn't turn green, make sure the outlet you are using isn't controlled by a light switch.



The Charging Dock (continued)

Using the Charging Dock

1. Lower your Lively Mobile2 in the charging dock until the charging contacts on both the device and the charging dock make contact. You will hear a tone from the speaker indicating that the device is placed properly and charging.
2. The power indicator on the charging dock flashes green while charging. When fully charged, the battery indicator will remain solid green. Charge fully before your first use of the Lively Mobile2.
3. To remove your Lively Mobile2 from the charging dock, grasp the device and lift it up and away from the charging dock. You will hear a tone from the speaker indicating that it is no longer charging. Unless additional charging is required, the battery indicator on the device turns off to save power.



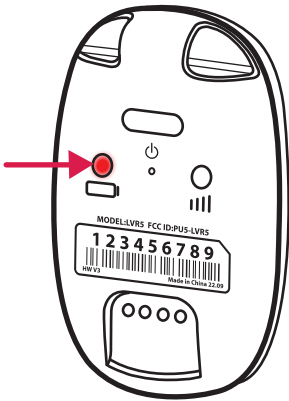
The Charging Dock (continued)

When to Charge Your Lively Mobile2

Always place your Lively Mobile2 in the charging dock when you're not using it so that it is ready when you need it. We recommend charging each night when you go to bed.

When the battery is low, the battery indicator will flash red and you will hear a tone reminding you to charge. The tone will repeat more frequently as the battery level decreases further.

If the battery loses all of its charge, the device will turn off. The Lively Mobile2 will power back on shortly after being placed back into the charging dock.

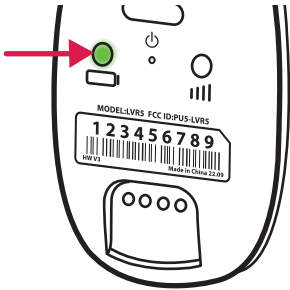


About the Battery Indicator

The battery indicator is located on the back of your Lively Mobile2 above the battery icon. The battery indicator lets you know the status of your device's battery level.

Refer to the table below for the common light patterns you will see from the battery indicator.

Color	Pattern	Meaning
Green	Flash	Battery is good and ready to use
Amber	Flash	Battery is low
Red	Flash	Battery is critical and needs to be charged
Off	None	Battery does not require charging or the device is turned off



FCC Regulations:

This device complies with part 15 of the FCC Rules. Operation is subject to the following two conditions: (1) This device may not cause harmful interference, and (2) this device must accept any interference received, including interference that may cause undesired operation.

This device has been tested and found to comply with the limits for a Class B digital device, pursuant to Part 15 of the FCC Rules. These limits are designed to provide reasonable protection against harmful interference in a residential installation. This equipment generates, uses and can radiated radio frequency energy and, if not installed and used in accordance with the instructions, may cause harmful interference to radio communications. However, there is no guarantee that interference will not occur in a particular installation. If this equipment does cause harmful interference to radio or television reception, which can be determined by turning the equipment off and on, the user is encouraged to try to correct the interference by one or more of the following measures:

- Reorient or relocate the receiving antenna.
- Increase the separation between the equipment and receiver.
- Connect the equipment into an outlet on a circuit different from that to which the receiver is connected.
- Consult the dealer or an experienced radio/TV technician for help.

FCC Note:

Caution: Changes or modifications not expressly approved by the party responsible for compliance could void the user's authority to operate the equipment.

RF Exposure Information

This device meets the government's requirements for exposure to radio waves. This device is designed and manufactured not to exceed the emission limits for exposure to radio frequency (RF) energy set by the Federal Communications Commission of the U.S. Government.

This device complies with FCC radiation exposure limits set forth for an uncontrolled environment. In order to avoid the possibility of exceeding the FCC radio frequency exposure limits, human proximity to the antenna shall not be less than 20 cm during normal operation.