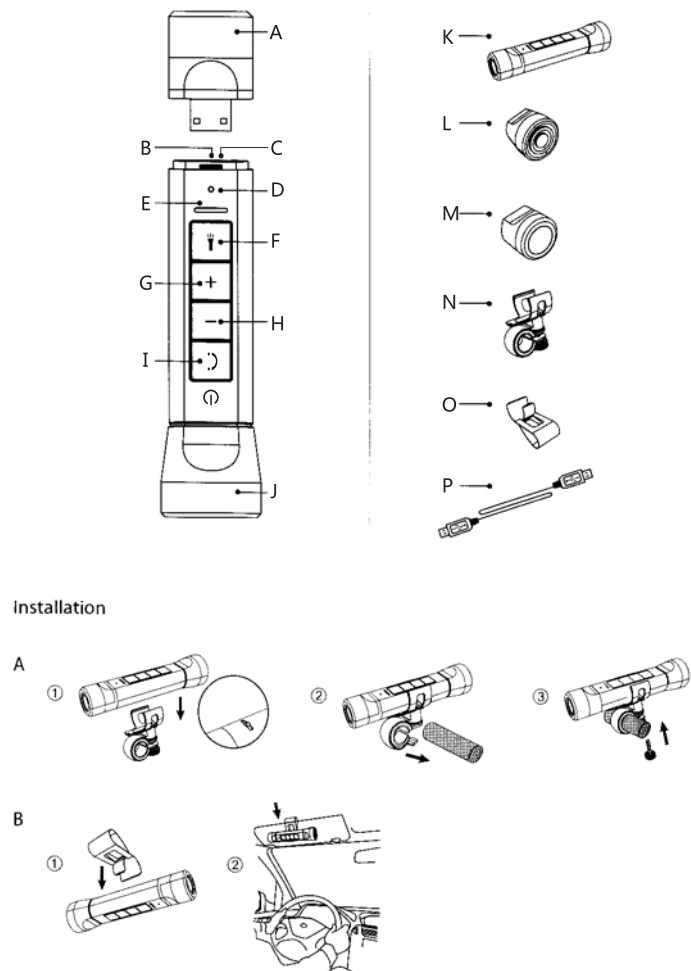


User Manual

Bluetooth Speaker

Model:BL007



OPERATING INSTRUCTIONS

Thank you for buying the Bluetooth MultiSpeaker 4in1.We are confident that this product will be the source of much enjoyment. Please read the flollowing chapters carefully so that you can become acquainted with the advantages of this product and its use.

Your security is important to us!

On the road safety always comes first.
Protect yourself and other road users,by operating the Bluetooth MultiSpeaker 4in1 only if the traffic situation allows it and you don't endanger or interfere anyone.Adjust the volume of the device for your own safety so that you can hear all the sounds of your environment. Your regional law is valid.

1) Controls and connections

- A) LED Light
- B) USB port
- C) Micro port
- D) Micro phone
- E) Status LED
- F) On/Off LED Flashlight Button
- G) Volume+ /Next Track
- H) Volume- /Previous Track
- I) Multi-function Button(On/Off,Bluetooth)
- J) Speaker

Package contents

- K) Main Body
- L) Optional Speaker(Selective)
- M) LED Flashlight
- N) Bicycle holder
- O) Sun visor clip/stand
- P) USB cable

Installation

- A) At the bicycle handlebar
- B) On the sun visor in your car

2) Basic Functions of MultiSpeaker

The Bluetooth MultiSpeaker 4in1 is a portable Bluetooth speaker with LED flashlight,speakerphone and USB charging function.Connected to a Bluetooth enabled mobile phone or other Bluetooth-enabled devices the MultiSpeaker sets up reliable and fast connections and transmits wireless music and calls.Via the USB port,any device with USB charging function can be charged.

Load MultiSpeaker

- a) Remove the LED-flashlight or the optional speaker from the USB port.
- b) Connect the USB cable with the Micro port at the MultiSpeaker and either with a Computer or a USB adapter for the socket.While charging, the red LED flash slowly and stays lighting up when the device is fully charged.After no more than 4 hours the battery is fully charged.

Low Voltage Reminder:The equipment will say:"No battery. Please charge " when voltage is low. Please charge the battery to maintain battery efficiency.

The maximum battery life is only reached after approximately 10 charging cycles.

The device turns off automatically if it is not charged after the "Low Voltage Reminder" indication shows up.

3) Use MultiSpeaker as a power bank

- a) Remove the LED-flashlight or the optional speakers from the USB port.
- b) Connect the USB cable to the MultiSpeaker and connect the other end to other devices(cellphone,MP3 player etc.)
- c) Press the On/Off flashlight button to launch the charging function. When the green light stays on,your device is being charged via DC 5V.

The charging process ends and the green LED turns off when the MultiSpeaker is not connected to another device or if the device is fully charged.

Some devices are programmed to continue charging if the battery is already fully charged.In this case, the MultiSpeaker loads the battery until the device will be removed or the battery of the MultiSpeaker is empty.

4) Use MultiSpeaker as a flashlight

- a) Make sure the LED-flashlight is completely mounted at the USB port.
- b) Press the On/Off flashlight button for 2 seconds to turn on the flash-mode.
- c) Press the On/Off flashlight button to turn the LED-flashlight off or remove the LED-flashlight from the USB port.

5) Use MultiSpeaker with a Bluetooth-enabled cellphone

Pair MultiSpeaker to your mobile phone:

- a) Long press the button 3 seconds to turn on,and there are 20 seconds to back when open the MultiSpeaker.After that,it will say: "Pairing" or "connected".
- b) Select:" 99F-BL007" from the list of available Bluetooth devices.
- c) When pairing is completed,it will say:Connected, and the LED will flash blue 3 times.Now the MultiSpeaker is under standby mode and the blue LED flashes three times every three seconds
- d) Now you can go back to your mobile phone's main menu and make, answer calls or playback music using the MultiSpeaker.Please place your phone not more than 10 meters away from the MultiSpeaker, to ensure a good connection.

If the pairing cannot be paired,the MultiSpeaker will say "Pairing" every half an hour. Please repeat step c to e to pair the MultiSpeaker and the cellphone again.

Build a connection between an already paired phone and the MultiSpeaker:

After the MultiSpeaker has been successfully paired to your cellphone,the MultiSpeaker is automatically set on standby.

The blue LED indicates whether the mobile phone is connected to the MultiSpeaker or not.It flashes once every 3 seconds if the connection exists and once every 0.5 second when connection is broken.Follow these steps to recover the connection:

Setup the Bluetooth connection on your cellphone:Select on your cellphone "MultiSpeaker" from the list of available Bluetooth devices.Briefly press the Multi-function button on the MultiSpeaker.Please confirm the connection to the MultiSpeaker on your mobile phone.

Turn off the MultiSpeaker's Bluetooth function:

Press and hold Multi-function button for 3 seconds and then the MultiSpeaker will be turned off.

Disconnect MultiSpeaker and cellphone:

Please follow these steps below if you want to connect the MultiSpeaker to another cell phone.

- a) Turn the MultiSpeaker off.
- b) Disconnect the MultiSpeaker in your mobile phone's Bluetooth menu.

The blue LED flashes twice every 3 seconds if the MultiSpeaker is not connected to any mobile device.

When the paired device is out of reach of the MultiSpeaker,the connection will be restored automatically once it is back within reach of the MultiSpeaker.

6) Bluetooth features of the MultiSpeaker

- Answer incoming call:**
To answer a call,wait for the MultiSpeaker to ring,then shortly press the Multi-function button to accept the call.

- Hand up call:**
Press the Multi-function button to end a call.

- Reject incoming call:**
Press the Multi-function button for 3 seconds to reject an incoming call.

- Redial:**
Press the Multi-function button twice quickly,the MultiSpeaker redials the last namber it called out.

- Volume Adjustment**
During a call activity or playing music,long press + and -to adjust volume.

- Play and pause music:**
Short press Multi-function button to Play and Pause music.

Some cellphones do not play music in standby mode.Please refer to your mobile phones user guide for additional information.

- Select previous and next song:**
While playing music,short press - or + on the MultiSpeaker to select the previous or the next track.

Instructions for safety and use:

Only qualified persons may perform technical work on the product.The product may not be opened or changed. The components cannot be serviced by the user.

Protect the device from extremely high and low temperatures and temperature fluctuations. Use the device within an ambient temperature of 5° to 40°C.

Never place the device close to a source of heat, and protect it from direct sunlight.

Never clean the surface of the device with solvents, paint thinners, cleansers or other chemical products. Instead, use a soft, dry cloth or soft brush.

In certain circumstances,exposing the device to an electrostatic discharge may interrupt the data transfer between the device and the computer and impair the functions of the device. If this occurs,the device should be unplugged from the USB port and then plugged it again.

Do not use USB cables longer than 3 meters.

This device can produce high sound volumes. In order to avoid hearing loss that can occur immediately, in the future, or gradually, you should not listen at high volumes for extended periods. This applies regardless of whether you listen with speakers, headphones, or earphones. If you notice a ringing noise in your ears, lower the volume immediately or stop using the MP3 player. Please keep in mind that permanent hearing loss can first appear at a later point in time. While you may become accustomed to higher volumes over time so that they may seem normal to you, your sense of hearing may still have been impaired by this. The higher you set the volume, the faster your sense of hearing can be damaged.

Caution LED class2(LED radiation)Don't stare into beam.EN62471:2008
Please do not look directly into the LED and direct the light beam not directly at people or animals in order to avoid violations of the eyes. The flash function of the flashlight should not be used in the presence of persons suffering from reflex epilepsies(Photosensitivity).

The manufacturer retains the right to continually improve the product. These changes may be made without being directly described in these operating instructions. For this reason, the information provided in these operating instructions may not reflect the current state of the art.

The manufacturer only guarantees suitability for the product's intended purpose. In addition,the manufacturer is not responsible for damages or loss of data and subsequent consequences.

This device complies with part 15 of the FCC rules. Operation is subject to the following two conditions:

- (1) this device may not cause harmful interference, and
- (2) this device must accept any interference received, including interference that may cause undesired operation.

Changes or modifications to this unit not expressly approved by the party responsible for compliance could void the user's authority to operate the equipment.

The device has been evaluated to meet general RF exposure requirement.

The device can be used in portable exposure condition without restriction.

NOTE: This equipment has been tested and found to comply with the limits for a Class B digital device, pursuant to part 15 of the FCC Rules. These limits are designed to provide reasonable protection against harmful interference in a residential installation. This equipment generates, uses and can radiate radio frequency energy and, if not installed and used in accordance with the instructions, may cause harmful interference to radio communications. However, there is no guarantee that interference will not occur in a particular installation. If this equipment does cause harmful interference to radio or television reception, which can be determined by turning the equipment off and on, the user is encouraged to try to correct the interference by one or more of the following measures:

- Reorient or relocate the receiving antenna.
- Increase the separation between the equipment and receiver.
- Connect the equipment into an outlet on a circuit different from that to which the receiver is connected.
- Consult the dealer or an experienced radio/TV technician for help.