

# V@luePad TABLET PC

## Quick Start Guide

### VP111 / VP112

Thank you for purchasing V@luePad tablets. Following is a quick reference to setting up your tablet, battery tips and an overview of key features. Most product issues can be solved by the troubleshooting's in this guide.

In cases when the product needs to be returned, serviced or you just need instructions on how to use features such as HDMI, please contact us directly at [cs@valuechainusa.com](mailto:cs@valuechainusa.com). **Return requests / product issues / service requests sent to this email address will be answered and processed faster than those going to your marketplace, such as eBay, Amazon, Sear, Newegg, etc.** Most requests will be answered within hours, if not minutes. We are proud of providing unparalleled local services to our customers out of our distribution center in Houston, TX.

For more details on how to use the V@luePad, specifications, and caring for your tablet, please refer to the User Manual available on the support page on ValueChain website at [www.valuechainusa.com/support](http://www.valuechainusa.com/support). V@luePad products are available at discounted prices on our website.

#### Charge the battery

- Charge the tablet for 8 hours before using it for the first time.
- Best charging practice: Charge the tablet frequently when the battery is between 20% and 80% to maximize battery life. Lithium batteries don't have "memory" effect. It is recommended to stop charging before the battery reaches 100%.
- Completely draining the battery can irreversibly damage it. Avoid using the tablet on battery when it is below 20%. Avoid keeping the battery low for overnight or longer.
  - Use only the original battery charger / AC adapter specified for use with the tablet. Other battery chargers or AC adapters may have different charging specifications that can result in overheating and damage the tablet. **Warning: Never use USB wall plugs to charge the tablet via its USB port. Limited Manufacturer warranty is voided if any USB or non-approved wall chargers are used.** See the list of accessories at the end of this guide if you need to order extra chargers.

### Battery tips

- Avoid over-charging the battery after it reaches 100%. Overheating would damage the battery irreversibly. In rare cases, overheating for extended period could result in explosions.
  - Do not spill water, salt water, juice or other fluids on a lithium-ion battery. Doing so may break the protective circuit built into the battery, resulting in the battery being charged with an abnormal current or voltage, and causing overheating, explosion or fire.
- Adjust screen brightness, delete unused apps and turn off Wi-Fi when applicable for longer battery life.
- Avoid using the tablet when its temperature is 120F or higher.
- Battery indicator may not be linear, i.e. last 30% could last as long as first 70%.
- Do not charge lithium-ion batteries in any place exposed to direct sunlight, such as a vehicle dashboard or a window sill, or exposed to high temperatures such as a vehicle parked in the sun. High temperatures may result in applying abnormal current or voltage when charging, and leading to overheating, explosion or fire.
- Keep devices that contain batteries and batteries themselves out of reach of children. Mishandling of lithium-ion batteries is dangerous.
- Keep batteries away from children and pets to prevent them from being licked, swallowed, chewed, etc.
- If the lithium-ion battery gives off an odor, is discolored, deforms, or reacts in anyway unusual during use, recharging or storage, disconnect the tablet from the charger and do not use it again. Continuing to use such batteries may result in overheating, explosion or fire.
- If a battery leaks or gives off an unusual odor, immediately remove it and place it away from any naked flame. The leaking electrolyte is inflammable and can cause the battery to explode or catch fire.
- Do not leave lithium-ion batteries near a heat source, such as a stove. Doing so may result in overheating, explosion or fire.

### **The font on the screen is too small and hurts my eyes. Is it defective?**

Human eyes are more comfortable reading text with bigger font sizes. The minimum font size suitable for long time reading varies by person and his/her physical conditions. A page of paper on a 7 inch tablet will be much smaller than the same page on a 10 inch tablet. So it takes much more effort to read on this tiny tablet resulting in hurting eyes for some people. This is the reason why a 7 inch tablet is not called a book reader. It is not designed for this purpose. Watching videos is much easier and comfortable because you don't have to read all details. Please consider tablets with bigger screens if you would do a lot reading with the tablet.

### **Pictures/videos on the tablet are not as vivid as those on an iPad. Is the tablet defective?**

We strive to make high quality tablets with lowest cost to our customers. The touchscreens used in ValuePad tablets are sourced from OEM suppliers of well-known brands. Each and every tablet has been inspected for dead or bright spots to ensure highest quality possible. Resolution and color depth of touchscreens on current ValuePad models are voted by customers via purchase preference and product reviews. However, we understand that there is no way displays on ValuePad tablets can compete with high end tablets due to cost constraints.

## **The tablet freezes, does not boot or stuck at the Android interface. Is it defective?**

It is not defective if the tablet can be restored using following methods. Please keep in mind the tablet is nothing but a tiny computer. With all the functions typically only found in high end tablets, it will have all the glitches that a computer has, or maybe worse. Depending on the model, ValuePad tablets have either 512MB or 1GB memory. It is normal that the ValuePad tablet has slow responses when it is busy, such as immediately after a fresh boot when it is loading settings and apps, switching modes between video playing and web surfing, starting to play HD videos on TV via HDMI, waiting for a web page / server to response, loading Skype and cameras, etc.

Follow the steps below to restore the tablet as you would reboot a computer every day. If you have tried the following methods and still could not make it to work, please don't hesitate to contact ValueChain LLC at [cs@valuechainusa.com](mailto:cs@valuechainusa.com).

To turn the tablet on, the power button needs to be pressed long enough, typically between 2 and 8 seconds depending on remaining battery level. ***Warning: The power switch under the power button is relatively fragile. Pressing hard on the power button might result in breaking the power switch. These physical damages are not covered by the 90-Days Manufacturer Warranty.***

In some cases, like all computers, the tablet would freeze or lock itself out to prevent further damages from corrupted files or settings. This could happen when the tablet is being connected to a TV via HDMI, apps have been installed or removed, a web page is failed to load, it is trying to play incompatible videos, system settings have been changed inappropriately, etc. Please try the following methods to restore the tablet.

### **Reset Button in the pin hole on the back**

Just like a computer needs to be rebooted every day to refresh, it is common to press the reset button in the pin hole on the back for 3 - 5 seconds to restore a tablet when it. This operation will NOT change system settings or remove installed apps or personal data.

### **Factory Data Reset**

A complete factory reset can solve issues caused by virus, incompatible apps, lagging and freezing in an old system, unknown setting changes, etc. To do a factory reset, go to "SETTINGS" – "Backup & Reset" in "Personal" section – "Factory Data Reset". ***Warning: This operation WILL remove personal data and apps.*** Purchased apps from Google Play Store can be re-installed after logging back into Google account.

### **A completely drained battery?**

Another possible reason for the tablet to not come back on is that the battery has been depleted completely. If the battery is completely drained, you will have to wait from 5 to 60 minutes until the battery has reached a certain threshold before it can be turned on. Note this is not a quality issue. All rechargeable lithium batteries behave this way.

## Connect the tablet to a computer for 12 hours or longer to restore a low level battery

In some cases, when the battery is drained to 10% or lower, you will need to connect it to a computer overnight (> 12 hours) using the included USB cable to restore the battery before using the reset button in the pin hole or charging it with the wall adapter. Again this is the way lithium batteries are. Search “empty battery tablet won't start up” for many helpful tips in the millions results.

## ON, OFF, and SLEEP

### Turning the ValuePad On

- To turn the ValuePad ON from an Off state, gently hold the power button for 3 to 8 seconds depending on battery level. To turn the ValuePad on from “Sleep” mode, simply press the power button.

### Turning the ValuePad Off

- To turn the ValuePad off completely, you must hold the power button down for about 2 seconds. A menu will appear. Select “Power Off”. This is important when traveling with the device, or when the tablet is not in use for extended periods of time, and to save battery.


### Sleep

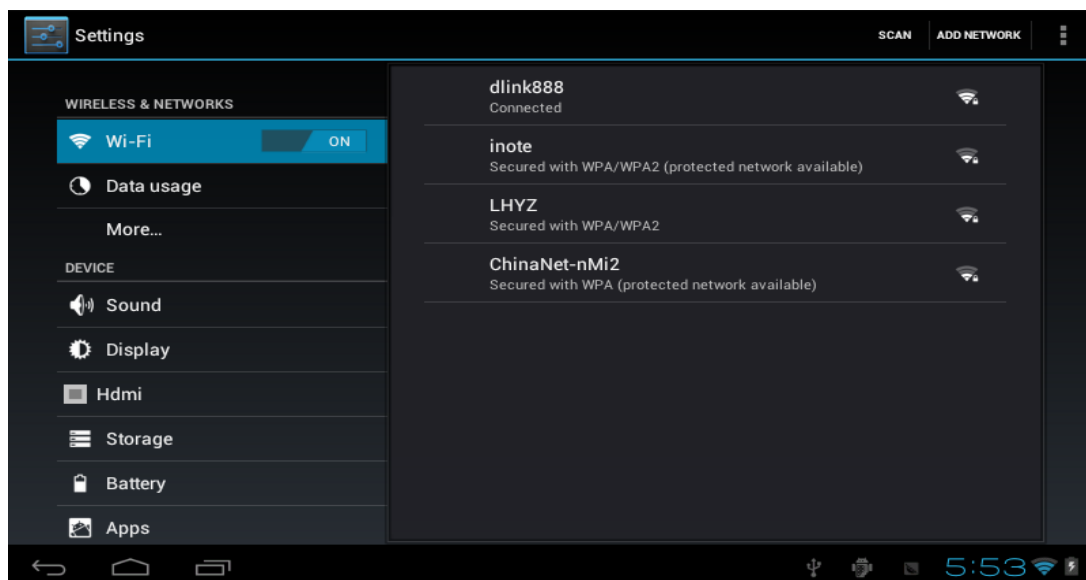
- “Sleep” mode requires a much shorter boot up time. To put the tablet in sleep mode, simply press the power button briefly. To turn the ValuePad on from the sleep mode, also briefly press the power button. Note: WiFi, Bluetooth, movies and games continue to drain battery while in Sleep mode.
- If tablet doesn't come back on after battery drained, connect it to a computer overnight using the USB cable before charging it with the wall adapter.

## Home Screen Information



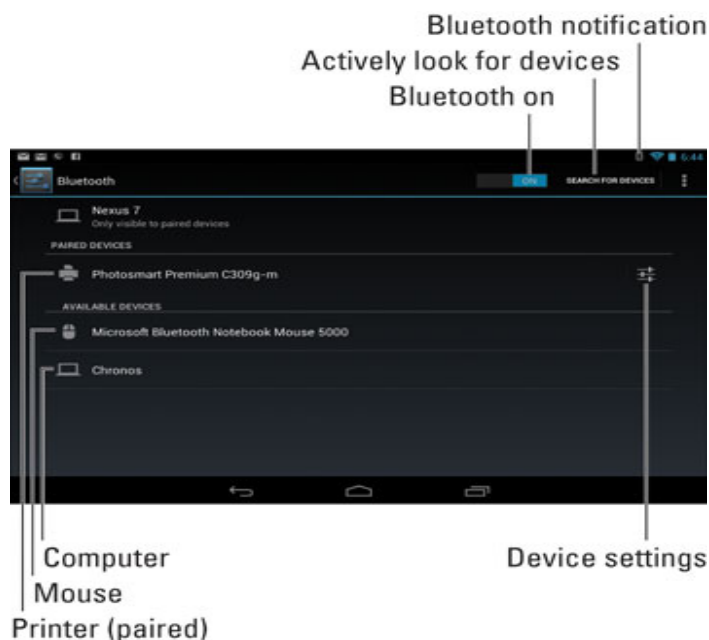
## WiFi Settings

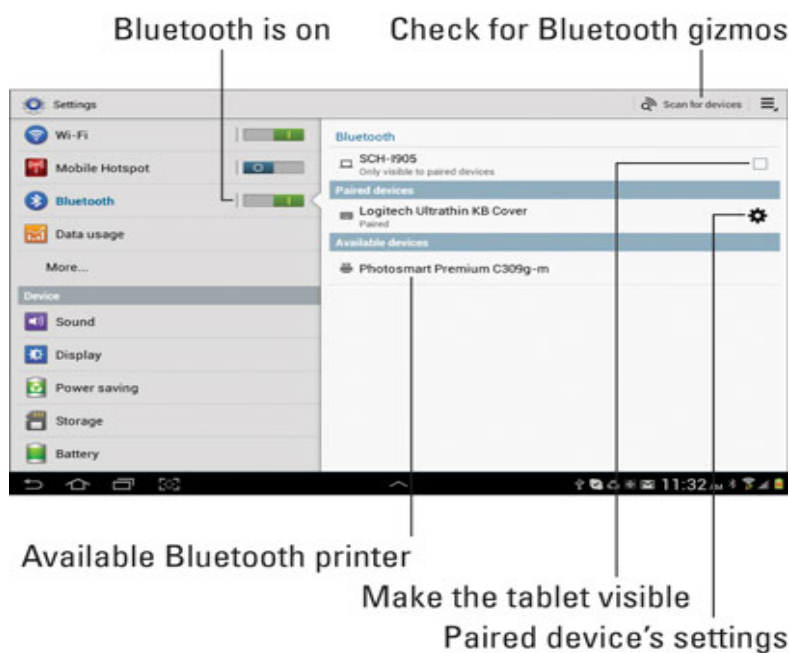
Enter network settings by pressing  button to set up WIFI as shown in the following picture. Select your WiFi network and key in password when prompted.



## Pair The Tablet with a Bluetooth Peripheral

- Ensure that Bluetooth is set to on in “Settings”.
- Turn on the Bluetooth gizmo or ensure that its Bluetooth radio is on.  
Some Bluetooth devices have separate power and Bluetooth switches. Your goal here is to make the Bluetooth device discoverable.
- On the Android tablet, touch the Apps icon on the Home screen and open the Settings app.
- Choose Bluetooth. You’ll see the Bluetooth screen. The Bluetooth screen shows any devices already paired with the tablet.





- If the Bluetooth device has an option to become visible or discoverable, select it.  
For example, some Bluetooth gizmos have a tiny button to press that makes the device visible to other Bluetooth gizmos.
- After making the Bluetooth device visible, it should appear on the Bluetooth screen. If it doesn't, touch the Search for Devices button.
- Choose the Bluetooth device from the list.
- If necessary, input the device's passcode or otherwise acknowledge the connection.  
Not every device has a passcode. If prompted, acknowledge the passcode on either the Android tablet or the other device.

## **Micro SD Card**

The unit is designed with a micro SD Card slot which allows you use a micro SD card. This enables you to both access media and files as well as save media and files to the V@luePad. You can open and play files directly from the micro SD card (such as music or movie), or you can copy or delete the files to and from the micro SD card. The ValuePad currently supports Micro SD cards with capacity up to 32GB.


## **USB Flash Drive**

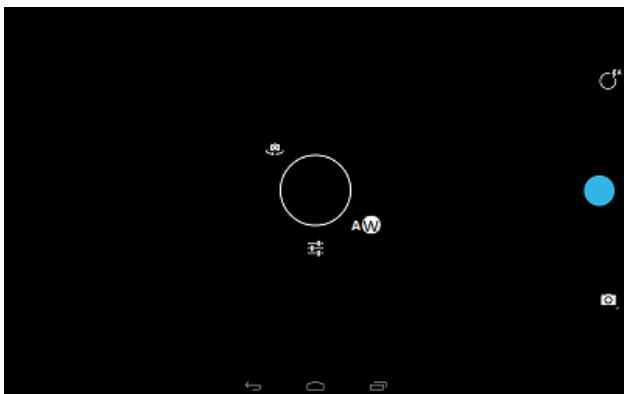
Another way to expand the storage is to use a USB flash drive. A flash drive with full size USB connector can be connected to the micro USB port on the tablet through the USB OTG (on-the-go) cable included in the package.


## **Front and Rear Cameras**

The cameras equipped in the tablet are for video chats and fun only. They may not have enough resolutions for any levels of photo taking.

To switch between front and rear cameras:

- Taking pictures: press the screen for 2 seconds to bring up the options as shown in the following picture and slide the finger to the symbol .



- During a Skype video call, tap your video in the small window -> select the video symbol  -> Switch Cameras.

## **USB On-The-Go**

USB On-The-Go, often abbreviated USB OTG or just OTG, allows the tablet to act as a host, allowing other USB devices like a USB flash drive, mouse, keyboard, 3G dongle or USB hub to be attached to them. Please try out a USB device before purchasing because not all devices are compatible. Compatibility with any specific USB device is not guaranteed. ( 3G dongle is not included in package of this product )

## **FAQs**

### **How to use an external Ethernet adapter with an Android tablet?**

Uncheck wifi in tablet's network settings. Connect the included OTG cable to the usb port on the tablet. Then connect an Ethernet adapter to the other end of the OTG cable. If DHCP on your router is not enabled, go to setup -> Ethernet setup -> IP setup and set gateway and a static IP.

### **The drive representing my tablet cannot be seen or opened when connected to a computer. How to fix it?**

Connect the tablet to a computer using original USB cable. Uncheck "USB debugging" in Settings -> Developer options. A USB symbol will show up at the lower right corner. Hold that symbol and lift up. Choose "connect USB devices".

### **Why is the USB keyboard not responding when connected to the tablet?**

The USB keyboard may need to be connected to the tablet before turning on the tablet.

### **My tablet has an 8GB drive. Why can I only see 6GB or less usable capacity?**

By default, hard drive manufacturers consider 1000MB as 1GB while computer manufacturers think 1024MB is 1GB. So an 8GB drive would be 7.4G in a computer. In addition, Android systems would consume up to 1GB space and system backup could be another 800MB. So the usable capacity on an 8GB drive could be between 5.5GB and 6GB. Similarly, a 4GB storage may have less than 2GB usable capacity.

### **Does this tablet have a built-in microphone?**

Yes, all ValuePad tablets have built-in microphones for online chatting.

### **Can I charge the tablet via the USB port?**

No. ValuePad tablets cannot be charged via their USB ports. Computer USB ports typically provide much lower amperage while wall plugs with USB output usually have much higher amperage that the USB port on a ValuePad could handle resulting in damaging the main board. Using unapproved chargers including USB wall plugs would void ValuePad tablets' manufacturer warranty.

Because of the lower amperage output, charging from a computer USB port is a good way to restore completely drained batteries.

### **Why is my tablet running slower and slower? And it freezes up more frequently.**

The tablet achieves best performance when its drive has enough space. It is recommended to use a MicroSD (also known as TF) card and install apps on it whenever possible. Installed apps can be moved to SD card by following these steps: Settings -> Applications -> Manage Applications -> select an app -> Move to SD Card. Some software can move apps in Android systems as well.

### **Why does my tablet get warm sometimes?**

ValuePad tablets use fast CPUs that typically run at 1GHz or faster. These CPUs generate some heat, especially when you play 3D games or HD (720P +) movies. Surface temperature could be as high as 110°F. This is normal. We recommend you let the tablet take a break whenever you do.

## **Handling Precautions**

1. Do not keep or use the tablet in hot, moist or dusty environment. The tablet is not waterproof.
2. Avoid falling or violent collision. Do not violently shake the touch screen to avoid damages to the display.
3. Charge the tablet regularly if it has not been used for a long time to avoid damages to the battery.
4. Do not disassemble the tablet. Warranty will be voided if the tablet is taken apart by unauthorized personnel.
5. Do not use alcohol, thinner or aromatic solvents to clean the tablet.
6. Do not use the tablet when driving or walking.
7. Set the volume to an appropriate level before using earphones to prevent ear damage.
8. Bottom of the tablet can get warm, especially after hours playing of 3D games or videos.

## **Accessories List**

SKU Number	Name	Functions / Notes
UCable001	Micro USB to USB data cable	Restore empty battery; Transfer data with a computer
OTG001	Micro USB On-The-Go cable	Connect OTG devices (mouse, keyboard, USB flash drive, etc)
Charger5V2A-1	Tablet wall charger 5V 2A	Warranty voided if non-approved chargers are used
QSG001	Quick Start Guide for VP111/VP112	Available at <a href="http://valuechainusa.com/support">valuechainusa.com/support</a>
SCR001	Screen protector	A multilayer film to protect the display



## Limited manufacturer's warranty

### What does this limited warranty cover?

ValueChain LLC warrants to the holder of a valid proof of purchase ("Consumer" or "you") that the ValuePad tablet and all accessories provided by ValueChain LLC in the sales package are free from material defects in material and workmanship, pursuant to the following terms and conditions, when installed and used normally and in accordance with operation instructions. This limited warranty extends only to the Consumer for Products purchased.

### What will ValueChain LLC do if the ValuePad Tablet is not free from material defects in materials and workmanship during the limited warranty period ("Materially Defective Product")?

During the limited warranty period, ValueChain LLC' authorized service representative will repair or replace, at ValueChain LLC' option, without charge, a Materially Defective Product. If we repair this ValuePad Tablet, we may use new or refurbished replacement parts. If we choose to replace this ValuePad Tablet, we may replace it with a new or refurbished ValuePad Tablet of the same or similar design. ValueChain LLC will return repaired or replacement ValuePad Tablets to you in working condition. ValueChain LLC will retain defective parts, modules, or equipment. Repair or replacement of ValuePad Tablet, at ValueChain LLC' option, is your exclusive remedy. You should expect the repair or replacement to take up to 30 days.

### How long is the limited warranty period?

The limited warranty period for the ValuePad Tablet extends for 90 Days from the date of purchase. If we repair or replace a Materially Defective Product under the terms of this limited warranty, this limited warranty also applies to repaired or replacement ValuePad Tablets for a period of either (a) 60 days from the date the repaired or replacement ValuePad Tablet is shipped to you or (b) the time remaining on the original 90-days limited warranty, whichever is longer.

### What is not covered by this limited warranty?

This limited warranty does not cover:

- Product that has been subjected to misuse, accident, shipping or other physical damage, improper installation, abnormal operation or handling, neglect, inundation, fire, water or other liquid intrusion;
- Product that has been damaged due to repair, alteration or modification by anyone other than an authorized service representative of ValueChain LLC;
- Product to the extent that the problem experienced is caused by signal conditions, network reliability or cable or antenna systems;
- Product to the extent that the problem is caused by use with non-ValueChain LLC electrical accessories;
- Product whose warranty/quality stickers, ValuePad Tablet serial numbers plates or electronic serial numbers have been removed, altered or rendered illegible;
- Product used for commercial or institutional purposes (including but not limited to ValuePad Tablets used for rental purposes);
- Product returned without valid proof of purchase;
- Charges for installation or set up, adjustment of customer controls, and installation or repair of systems outside the unit.

### How do you get warranty service?

Before requesting service, please check the instructions in Quick Start Guide. A check of the troubleshooting measures in this guide may save you a service call. To obtain warranty service, email [cs@valuechainusa.com](mailto:cs@valuechainusa.com) with the 7 digits serial number on the back of the tablet and ask for instructions regarding where to return the ValuePad Tablet.

Except as provided by applicable law, you assume the risk of loss or damage during transit and transportation and are responsible for delivery or handling charges incurred in the transport of ValuePad Tablet(s) to the service location. ValueChain LLC will return repaired or replaced ValuePad Tablet under this limited warranty to you, transportation, delivery or handling charges prepaid. ValueChain LLC assumes no risk for damage or loss of the ValuePad Tablet in transit.

If the ValuePad Tablet failure is not covered by this limited warranty, or proof of purchase does not meet the terms of this limited warranty, ValueChain LLC will notify you and will request that you authorize the cost of repair prior to any further repair activity. You must pay for the cost of repair and return shipping costs for the repair of ValuePad Tablets that are not covered by this limited warranty.

### **FCC Warning Statement**

Changes or modifications not expressly approved by the party responsible for compliance could void the user's authority to operate the equipment.

This equipment has been tested and found to comply with the limits for a Class B digital device, pursuant to Part 15 of the FCC Rules. These limits are designed to provide reasonable protection against harmful interference in a residential installation. This equipment generates uses and can radiate radio frequency energy and, if not installed and used in accordance with the instructions, may cause harmful interference to radio communications. However, there is no guarantee that interference will not occur in a particular installation. If this equipment does cause harmful interference to radio or television reception, which can be determined by turning the equipment off and on, the user is encouraged to try to correct the interference by one or more of the following measures:

- Reorient or relocate the receiving antenna.
- Increase the separation between the equipment and receiver.
- Connect the equipment into an outlet on a circuit different from that to which the receiver is connected.
- Consult the dealer or an experienced radio/TV technician for help

Customer service: [cs@valuechainusa.com](mailto:cs@valuechainusa.com) | [www.valuechainusa.com/support](http://www.valuechainusa.com/support)

V@luePad logo is trademark of ValueChain LLC. Information in this document is subject to change without notice.

Copyright 2014 ValueChain LLC. All Rights Reserved.