

Appendix A

Detailed System Check Results

1. System Performance Check
System Performance Check 750 MHz Head
System Performance Check 835 MHz Head
System Performance Check 1950 MHz Head
System Performance Check 2450 MHz Head

Test Laboratory: SGS-SAR Lab

System Performance Check 750MHz**DUT: D750V3; Type: Dipole; Serial: 1214**

Communication System: UID 0, CW (0); Frequency: 750 MHz;Duty Cycle: 1:1

Medium: HSL750;Medium parameters used: $f = 750$ MHz; $\sigma = 0.857$ S/m; $\epsilon_r = 43.711$; $\rho = 1000$ kg/m³

Phantom section: Flat Section

DASY 5 Configuration:

- Probe: EX3DV4 - SN3923; ConvF(10.75, 10.75, 10.75); Calibrated: 2023/2/28
- Sensor-Surface: 1.4mm (Mechanical Surface Detection)
- Electronics: DAE4 Sn1327; Calibrated: 2022/11/18
- Phantom: SAM 7; Type: SAM; Serial: 1702
- DASY52 52.10.4(1527); SEMCAD X 14.6.14(7483)

Body/d=15mm, Pin=250mW/Area Scan (5x13x1): Measurement grid: dx=15mm, dy=15mm

Maximum value of SAR (measured) = 2.62 W/kg

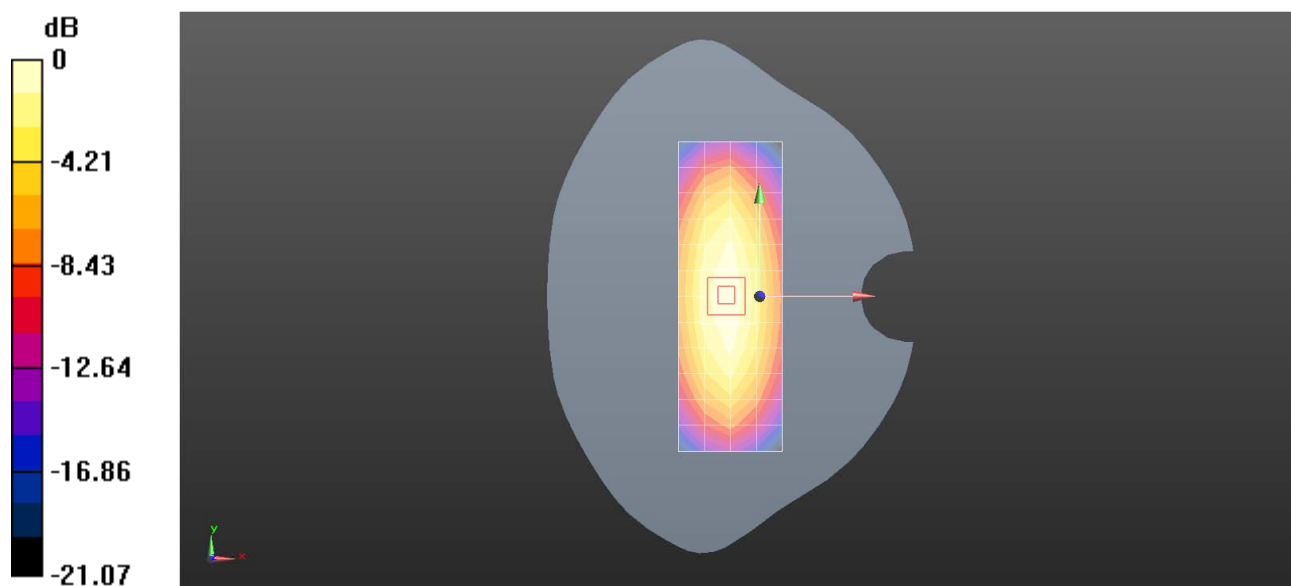
Body/d=15mm, Pin=250mW/Zoom Scan (5x5x7)/Cube 0: Measurement grid: dx=8mm, dy=8mm, dz=5mm

Reference Value = 48.83 V/m; Power Drift = 0.06 dB

Peak SAR (extrapolated) = 3.02 W/kg

SAR(1 g) = 1.97 W/kg; SAR(10 g) = 1.29 W/kg

Maximum value of SAR (measured) = 2.64 W/kg



0 dB = 2.62 W/kg = 4.18 dBW/kg

Test Laboratory: SGS-SAR Lab

System Performance Check 835MHz

DUT: D835V2; Type: Dipole; Serial: 4d161

Communication System: UID 0, CW (0); Frequency: 835 MHz; Duty Cycle: 1:1

Medium: HSL835; Medium parameters used: $f = 835$ MHz; $\sigma = 0.908$ S/m; $\epsilon_r = 43.146$; $\rho = 1000$ kg/m³

Phantom section: Flat Section

DASY 5 Configuration:

- Probe: EX3DV4 - SN3923; ConvF(10.35, 10.35, 10.35); Calibrated: 2023/2/28
- Sensor-Surface: 1.4mm (Mechanical Surface Detection)
- Electronics: DAE4 Sn1327; Calibrated: 2022/11/18
- Phantom: SAM 7; Type: SAM; Serial: 1702
- DASY52 52.10.4(1527); SEMCAD X 14.6.14(7483)

Body/d=15mm, Pin=250mW/Area Scan (8x14x1): Measurement grid: dx=15mm, dy=15mm

Maximum value of SAR (measured) = 2.77 W/kg

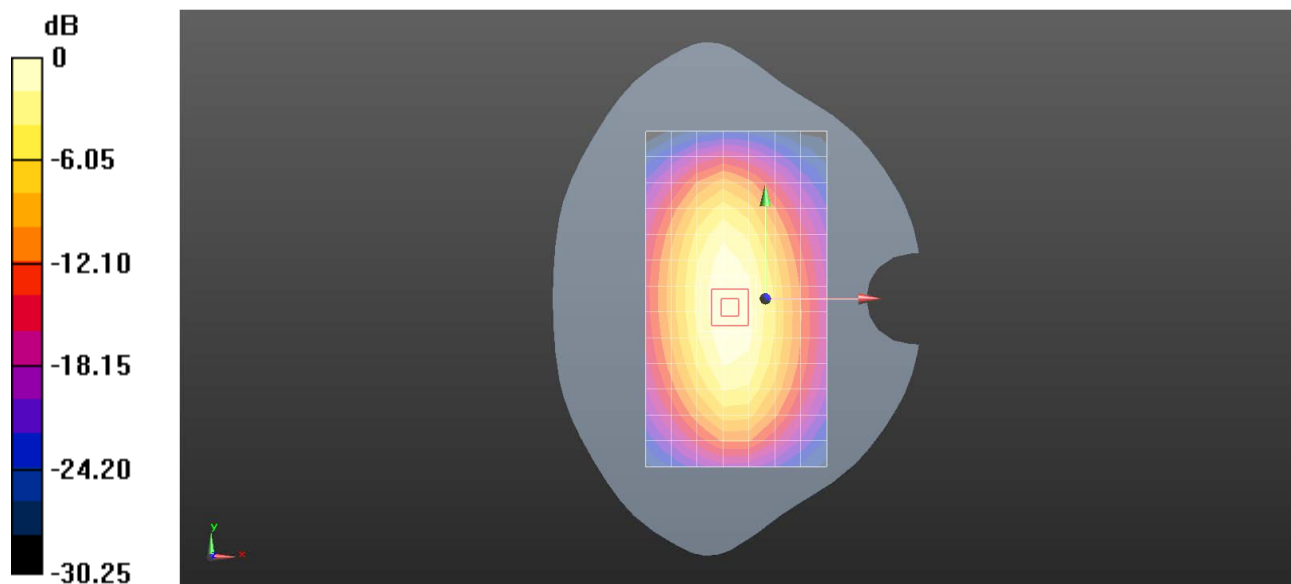
Body/d=15mm, Pin=250mW/Zoom Scan (5x5x7)/Cube 0: Measurement grid: dx=8mm, dy=8mm, dz=5mm

Reference Value = 50.72 V/m; Power Drift = 0.10 dB

Peak SAR (extrapolated) = 3.44 W/kg

SAR(1 g) = 2.28 W/kg; SAR(10 g) = 1.5 W/kg

Maximum value of SAR (measured) = 2.90 W/kg



0 dB = 2.77 W/kg = 4.43 dBW/kg

Test Laboratory: SGS-SAR Lab

System Performance Check 1950MHz

DUT: D1950V3; Type: Dipole; Serial: 1218

Communication System: UID 0, CW (0); Frequency: 1950 MHz; Duty Cycle: 1:1

Medium: HSL1950; Medium parameters used: $f = 1950$ MHz; $\sigma = 1.42$ S/m; $\epsilon_r = 40.047$; $\rho = 1000$ kg/m³

Phantom section: Flat Section

DASY 5 Configuration:

- Probe: EX3DV4 - SN3923; ConvF(8.41, 8.41, 8.41); Calibrated: 2023/2/28
- Sensor-Surface: 1.4mm (Mechanical Surface Detection)
- Electronics: DAE4 Sn1327; Calibrated: 2022/11/18
- Phantom: SAM 7; Type: SAM; Serial: 1702
- DASY52 52.10.4(1527); SEMCAD X 14.6.14(7483)

Body/d=10mm, Pin=250mW/Area Scan (5x7x1): Measurement grid: dx=15mm, dy=15mm

Maximum value of SAR (measured) = 13.9 W/kg

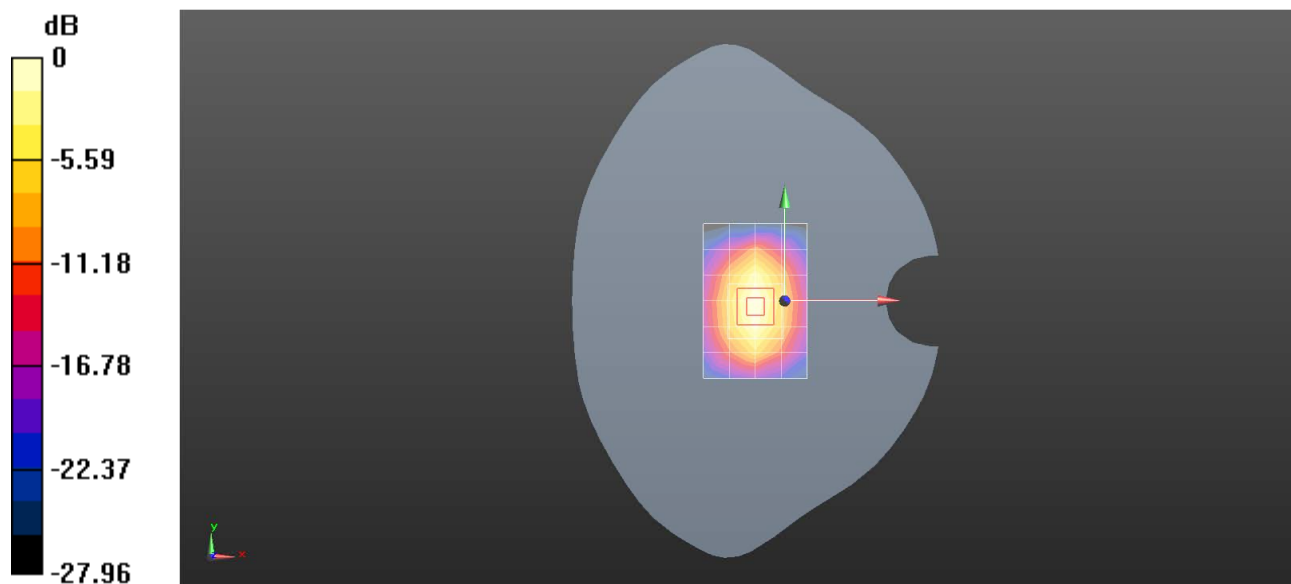
Body/d=10mm, Pin=250mW/Zoom Scan (5x5x7)/Cube 0: Measurement grid: dx=8mm, dy=8mm, dz=5mm

Reference Value = 85.16 V/m; Power Drift = -0.00 dB

Peak SAR (extrapolated) = 16.7 W/kg

SAR(1 g) = 9.31 W/kg; SAR(10 g) = 4.92 W/kg

Maximum value of SAR (measured) = 14.1 W/kg



0 dB = 13.9 W/kg = 11.44 dBW/kg

Test Laboratory: SGS-SAR Lab

System Performance Check 2450MHz

DUT: D2450V2; Type: Dipole; Serial: 922

Communication System: UID 0, CW; Frequency: 2450 MHz; Duty Cycle: 1:1

Medium: HSL2450; Medium parameters used: $f = 2450$ MHz; $\sigma = 1.813$ S/m; $\epsilon_r = 38.495$; $\rho = 1000$ kg/m³

Phantom section: Flat Section

DASY 5 Configuration:

- Probe: EX3DV4 - SN3923; ConvF(7.95, 7.95, 7.95); Calibrated: 2023/2/28
- Sensor-Surface: 1.4mm (Mechanical Surface Detection)
- Electronics: DAE4 Sn1327; Calibrated: 2022/11/18
- Phantom: SAM 7; Type: SAM; Serial: 1702
- DASY52 52.10.4(1527); SEMCAD X 14.6.14(7483)

Body/d=10mm, Pin=250mW/Area Scan (6x8x1): Measurement grid: dx=12mm, dy=12mm

Maximum value of SAR (measured) = 20.8 W/kg

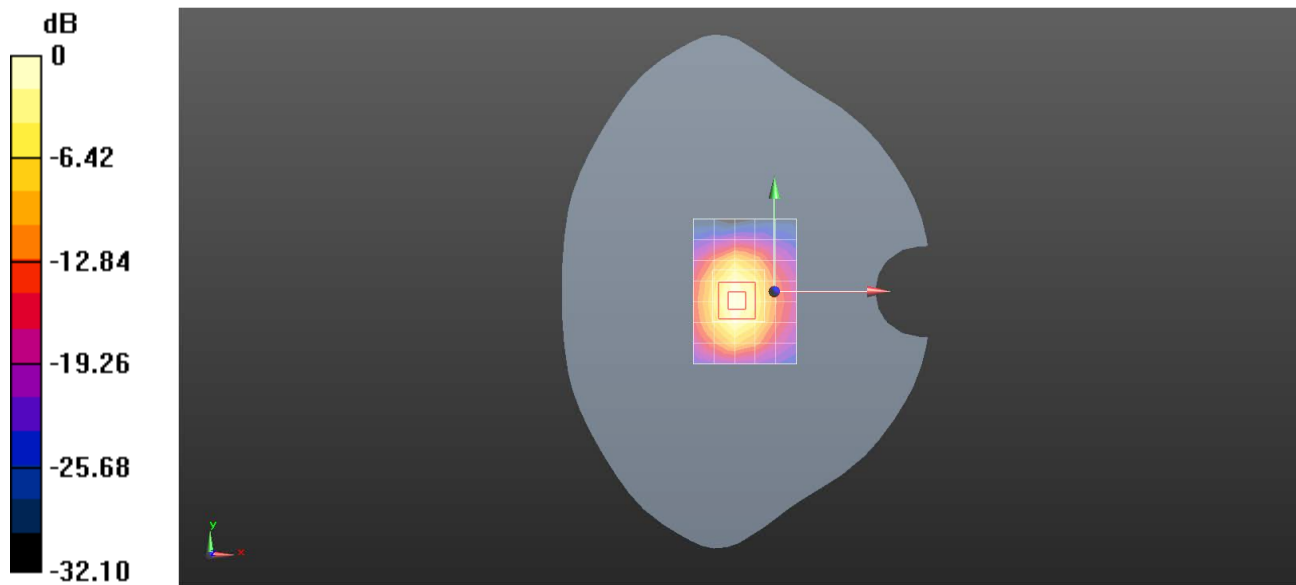
Body/d=10mm, Pin=250mW/Zoom Scan (7x7x7)/Cube 0: Measurement grid: dx=5mm, dy=5mm, dz=5mm

Reference Value = 82.28 V/m; Power Drift = 0.03 dB

Peak SAR (extrapolated) = 25.5 W/kg

SAR(1 g) = 13.1 W/kg; SAR(10 g) = 6.32 W/kg

Maximum value of SAR (measured) = 20.8 W/kg



0 dB = 20.8 W/kg = 13.19 dBW/kg