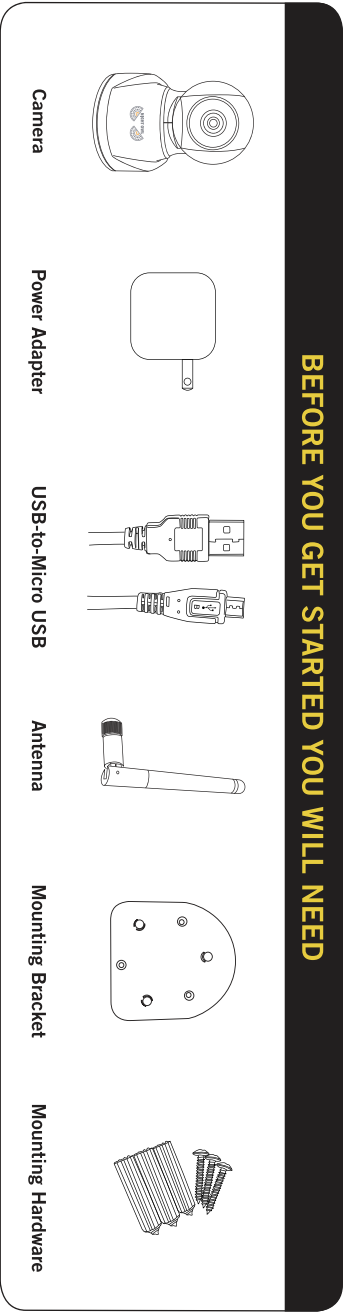
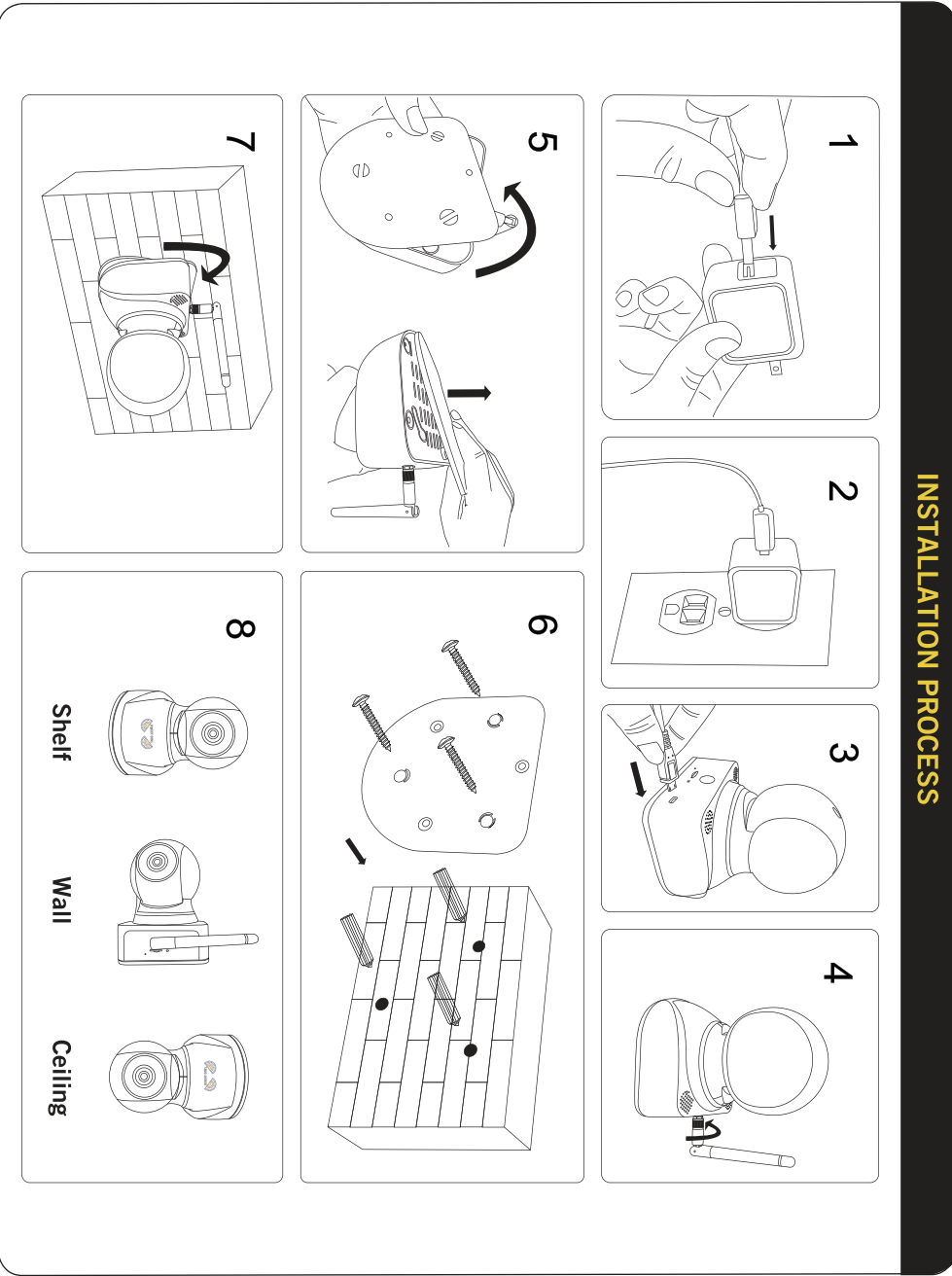
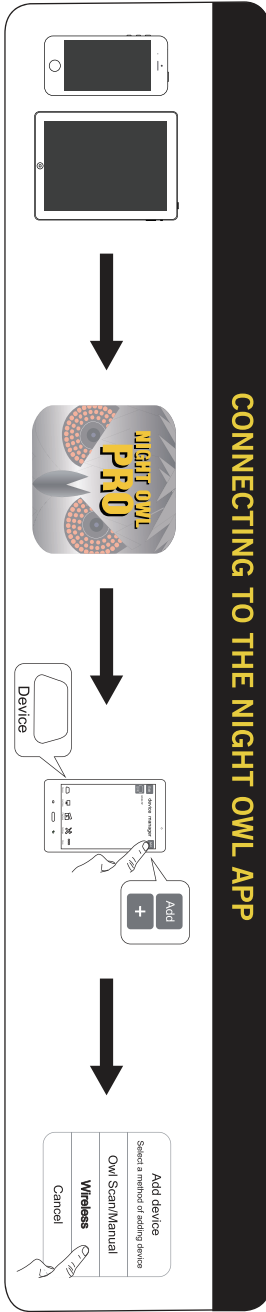


Images used are for reference only. Your product may vary slightly.



**NIGHT OWL**

**QUICK SETUP GUIDE**

IP CAMERA WITH POINT, TILT, AND ZOOM

Please visit our website at [www.NightOwlISP.com](http://www.NightOwlISP.com) for all manuals, software, and firmware updates. There are also free How-To Videos with step-by-step instructions for connecting your camera.

## CUSTOMER SUPPORT

**STOP**

BEFORE YOU RETURN TO THE STORE,  
WE MIGHT BE ABLE TO SAVE YOU A TRIP

**ONLINE**

24/7 Product Support

- How-To Videos
- Manuals
- Firmware Updates etc.

[www.NightOwlISP.com](http://www.NightOwlISP.com)

**EMAIL**

Technical Support

- Technical Issues
- Warranty Replacement

Email: [Support@NightOwlISP.com](mailto:Support@NightOwlISP.com)

**SALES SUPPORT**

24/7 Product Support

- Accessory Sales
- Sales Related Questions

Email: [Sales@NightOwlISP.com](mailto:Sales@NightOwlISP.com)

**PHONE**

Technical Support

- 24/7 365 Days a Year
- Please register your product at: [www.NightOwlISP.com](http://www.NightOwlISP.com) to receive phone support

Sales Support: 561-265-5272

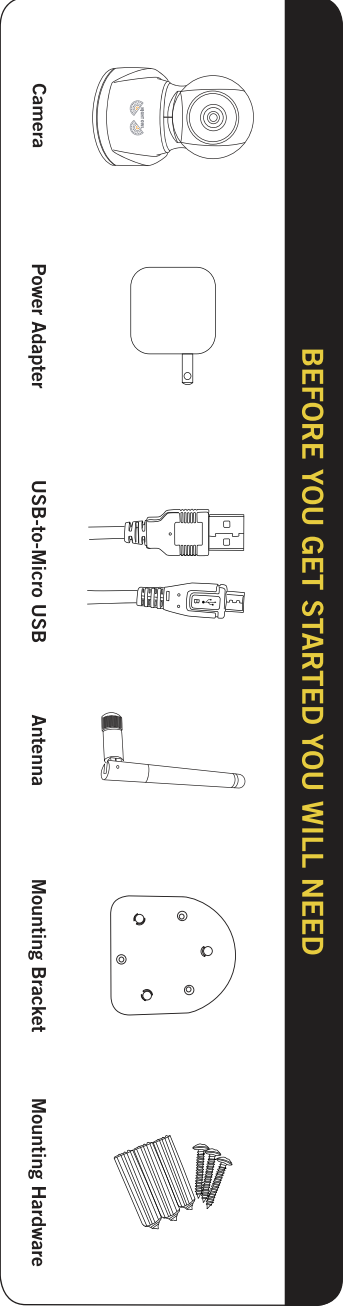
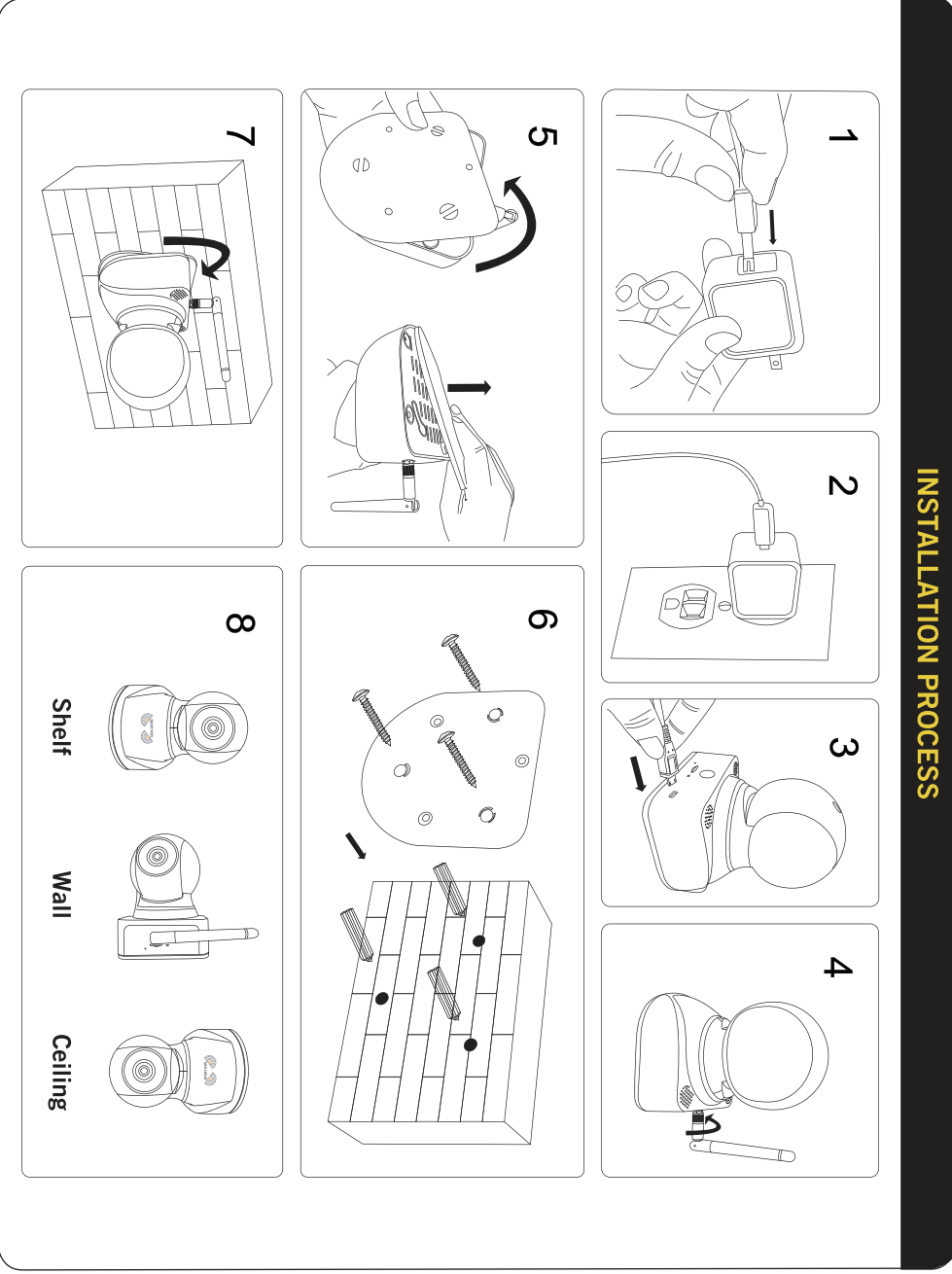
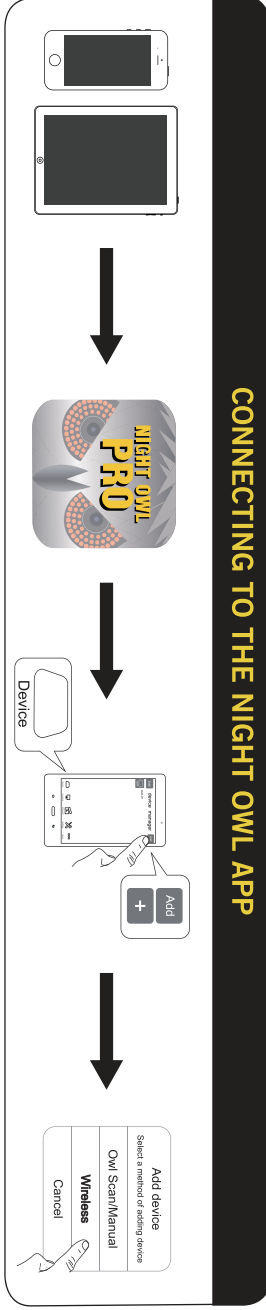
9:00AM - 5:00PM EST Monday thru Friday

Professional Installation: 1-800-806-5513

9:00AM - 5:00PM EST Monday thru Friday

Please visit our website at [www.NightOwlISP.com](http://www.NightOwlISP.com) for all manuals, software, and firmware updates. There are also free How-To videos with step-by-step instructions for configuring the settings on your DVR.

Images used are for reference only. Your product may vary slightly.



**NIGHT OWL**

**QUICK SETUP GUIDE**

IP CAMERA WITH POINT, TILT, AND ZOOM

Please visit our website at [www.NightOwlISP.com](http://www.NightOwlISP.com) for all manuals, software, and firmware updates. There are also free How-To Videos with step-by-step instructions for connecting your camera.

## CUSTOMER SUPPORT

**STOP**

BEFORE YOU RETURN TO THE STORE,  
WE MIGHT BE ABLE TO SAVE YOU A TRIP

**ONLINE**

24/7 Product Support

- How-To Videos
- Manuals
- Firmware Updates etc.

[www.NightOwlISP.com](http://www.NightOwlISP.com)

**EMAIL**

Technical Support

- Technical Issues
- Warranty Replacement

Email: [Support@NightOwlISP.com](mailto:Support@NightOwlISP.com)

**SALES SUPPORT**

24/7 Product Support

- Accessory Sales
- Sales Related Questions

Email: [Sales@NightOwlISP.com](mailto:Sales@NightOwlISP.com)

**PHONE**

Technical Support

- 24/7 365 Days a Year
- Please register your product at: [www.NightOwlISP.com](http://www.NightOwlISP.com) to receive phone support

Sales Support: 561-265-5272

9:00AM - 5:00PM EST Monday thru Friday

Professional Installation: 1-800-806-5513

9:00AM - 5:00PM EST Monday thru Friday

Please visit our website at [www.NightOwlISP.com](http://www.NightOwlISP.com) for all manuals, software, and firmware updates. There are also free How-To videos with step-by-step instructions for configuring the settings on your DVR.

EUT: IP Pan and Tilt Wireless Camera  
Model Number: CAM-IPPT-HDW  
Trade Name: Night Owl

**FCC Warnings:**

This device complies with Part 15 of the FCC Rules. Operation is subject to the following two conditions: (1) this device may not cause harmful interference, and (2) this device must accept any interference received, including interference that may cause undesired operation.

NOTE: This equipment has been tested and found to comply with the limits for a Class B digital device, pursuant to Part 15 of the FCC Rules. These limits are designed to provide reasonable protection against harmful interference in a residential installation. This equipment generates, uses and can radiate radio frequency energy and, if not installed and used in accordance with the instructions, may cause harmful interference to radio communications. However, there is no guarantee that interference will not occur in a particular installation.

If this equipment does cause harmful interference to radio or television reception, which can be determined by turning the equipment off and on, the user is encouraged to try to correct the interference by one or more of the following measures: -- Reorient or relocate the receiving antenna. -- Increase the separation between the equipment and receiver. -- Connect the equipment into an outlet on a circuit different from that to which the receiver is connected. -- Consult the dealer or an experienced radio/TV technician for help.

FCC Radiation Exposure Statement: This equipment complies with FCC radiation exposure limits set forth for an uncontrolled environment.

The grantee is not responsible for any changes or modifications not expressly approved by the party responsible for compliance; such change or modification could void the user's authority to operate the equipment.