

USER MANUAL

M1 + A1

Bluetooth Microphone for GoPro®

REMOVU®

ENGLISH	3
한국어	9

Join REMOVU Family

Product Website www.removu.com

Get support www.removu.com/support

Find Store information www.removu.com/distributors



Facebook.com/removuglobal



Instagram.com/removu



Twitter.com/removuglobal



Youtube.com/removu

Unauthorized reproduction of this document in whole or in part is strictly prohibited.
The content of this document may be changed at any time without prior notice.

1. Contents

Please make sure your package includes all of the following items.



M1
Set



M1 Waterproof
Housing



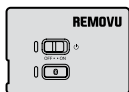
M1
Windscreen



M1 Swivel
Mount



M1 Swivel
Clip



A1
Set



A1
Connector



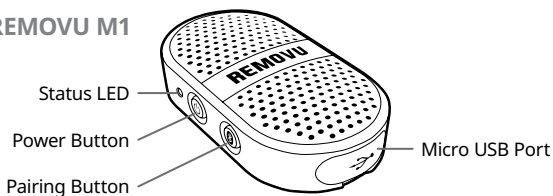
USB
Cable



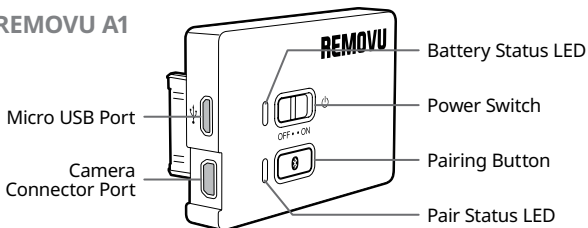
User
Manual

2. Parts

REMOVU M1



REMOVU A1

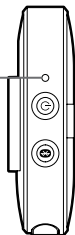


3. LED Status Indicator

REMOVU M1

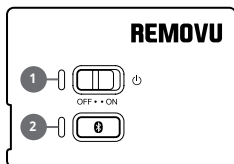
1. When Charging
 - Red LED: Charging
 - Blue LED: Fully Charged
2. Bluetooth Pairing
 - Red LED: Unpaired
 - Flashing red and blue LED: Pairing
 - Blue LED: Paired
3. Battery Status (Shows only when the device turns on)
 - 100% ~ 76%: Red LED flashes 4 times
 - 75% ~ 51%: Red LED flashes 3 times
 - 50% ~ 26%: Red LED flashes 2 times
 - 25% ~ 5%: Red LED flashes 1 time
 - Below 5%: Red LED flashes 10 times
4. Battery Status when being used
 - Below 5%: The device turns off after red LED flashes 10 times in 0.2 second interval.

Status LED



REMOVU A1

1. LED1: Battery Status Indicator
 - Red LED: Charging
 - Blue LED: Fully Charged
2. LED2: Bluetooth Status Indicator
 - Red LED: Unpaired
 - Flashing red and blue LED: Pairing
 - Blue LED: Paired
 - Red + Blue LED: Audio Amplification Mode
3. Battery Status (Shows only when the device turns on)
 - 100% ~ 76%: Red LED flashes 4 times
 - 75% ~ 51%: Red LED flashes 3 times
 - 50% ~ 26%: Red LED flashes 2 times
 - 25% ~ 5%: Red LED flashes 1 time
 - Below 5%: Red LED flashes 10 times
4. Battery Status when being used
 - Below 5%: The device turns off after red LED flashes 10 times in 0.2 second interval.

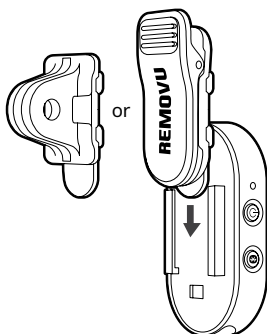


4. How to use REMOVU M1+A1

REMOVU M1

Attaching swivel collar clip or mount connector on M1.

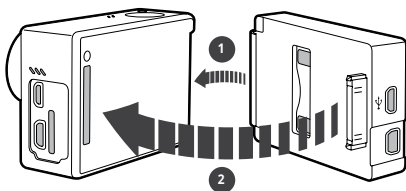
1. Slide the collar clip into the guide rail located on the back of M1.
2. Clip-on the device to your collar or mount any place you wish to attach it to.
3. You can rotate the M1 in the desired angle.



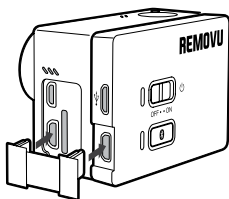
REMOVU A1

Attaching the A1 to GoPro.

1. Attach the A1 to the back of your GoPro as illustrated below.



2. Make sure plug the device into the slot all the way.
3. Plug the connector to the GoPro and the A1.
4. To detach, just follow previous steps backwards.



5. Pairing the Device

1. Pairing A1 to M1
 - Turn on the A1, and press the pairing button.
 - Turn on the M1, and press the pairing button.
 - When the devices are paired, the LED indicators on both devices will turn blue.
2. Pairing A1 with other Bluetooth microphones (headsets).
 - Turn on the A1, and press the pairing button.
 - Turn on the power of the device you are trying to use with A1 and activate the pairing mode of the device.
 - When the devices are paired, the LED indicator will turn blue.

6. To Record

1. When the devices are successfully connected, and A1 and its connector are plugged in correctly, the camera will record the sound received from the M1 to the video.
2. Switching Microphones: If you want to switch from M1 to GoPro internal microphone
 - While A1 is connected to the GoPro, turn off pairing mode using the pairing button on A1 or just turn off the power to use the internal microphone of GoPro. Turn on pairing mode to use M1 again.
 - Turn off the power of M1 or unpair the device using the pairing button to disconnect the device. Then the internal microphone of GoPro get activated.

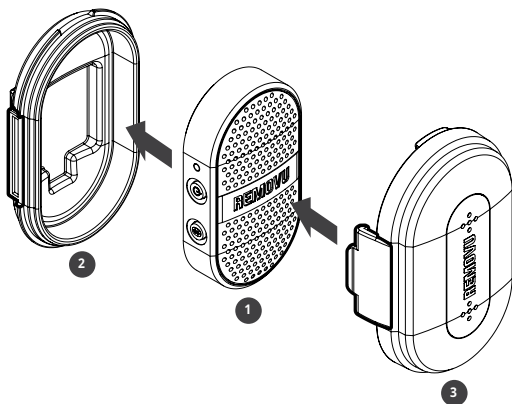
7. Audio Amplification Mode

This mode is used when M1 is being used in the waterproof housing case. It amplifies the sound recorded through M1.

How to Activate

1. While the devices are paired, press the pairing button on A1.
2. When you see both red and blue LED lit at the same time, it means you have successfully activated the audio amplification mode.
3. To deactivate, press the pairing button on A1 again.

8. Waterproof Housing



With the waterproof housing, you can record the sound even under wet condition.

To use the waterproof housing,

1. Place the M1 into the bottom part ② of the housing.
2. Place the lid part ③ onto the bottom part and assemble until the the two brackets clicks to the bottom part.
3. Turn on the Audio Amplification mode to record your sound.

To remove the waterproof housing,

1. Lift up the two brackets that are holding the top and bottom parts of the case together.
2. Pull off the top part from the bottom part.
3. Remove the M1 from the case.

9. Warranty Information

Standard Limited Warranty

Essel-t Co., LTD. ("essel-t") warrants that essel-t's devices and accessories ("Products") are free from defects in material and workmanship under normal use and service for the period commencing upon the date of purchase by the first consumer purchaser and continuing for 18 months period of time after that date.

Exclusions and Limitations

This Limited Warranty is conditioned upon proper use of Product by Purchaser. This Limited Warranty does not cover:

- (a) Defects or damage resulting from accident, misuse, abnormal use, abnormal conditions, improper storage, exposure to liquid, moisture, dampness, sand or dirt, neglect, or unusual physical, electrical or electromechanical stress;
- (b) Scratches, dents and cosmetic damage, unless caused by essel-t;
- (c) Defects or damage resulting from excessive force or use of a metallic object when pressing on a touch screen;
- (d) Equipment that has the serial number or the enhancement data code removed, defaced, damaged, altered or made illegible;
- (e) Ordinary wear and tear;
- (f) Defects or damage resulting from the use of Product in conjunction or connection with accessories, products, or ancillary/peripheral equipment not furnished or approved by essel-t;
- (g) Defects or damage resulting from improper testing, operation, maintenance, installation, service, or adjustment not furnished or approved by essel-t;
- (h) Defects or damage resulting from external causes such as collision with an object, fire, flooding, dirt, windstorm, lightning, earthquake, exposure to weather conditions, theft, blown fuse, or improper use of any electrical source;
- (i) The battery has been charged by a battery charger not specified or approved by essel-t for charging the battery;

1. 구성품

하기 구성품이 모두 들어 있는지 확인하세요.



M1
세트



M1
방수하우징



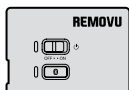
M1
바람막이



M1
회전 마운트



M1
회전 클립



A1
세트



A1
커넥터



USB
케이블



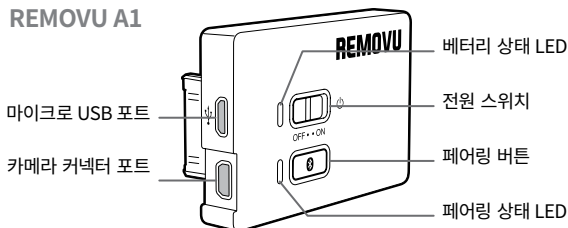
사용
설명서

2. 부분설명

REMOVU M1



REMOVU A1



3. LED 상태표시등 설명

REMOVU M1

1. 충전시

- 빨강 LED: 충전중
- 파랑 LED: 완충

2. 블루투스 상태 표시등

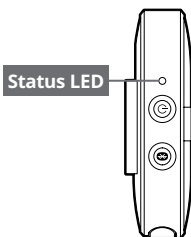
- 빨강 LED: 페어링 안됨
- 빨강, 파랑 LED 동시 점멸: 페어링 중
- 파랑 LED: 페어링 완료

3. 배터리 상태표시 (전원이 들어온 직후에만 표시)

- 100% ~ 76%: 빨강 LED 점등 4회
- 75% ~ 51%: 빨강 LED 점등 3회
- 50% ~ 26%: 빨강 LED 점등 2회
- 25% ~ 5%: 빨강 LED 점등 1회
- 배터리 레벨 5% 이하: 빨강 LED 점등 10회

4. 사용중 배터리 상태 표시

- 배터리 레벨 5% 이하: 빨강 LED 점등 10회 후 기기 전원 Off



REMOVU A1

1. LED1: 배터리 상태 표시등

- 빨강 LED: 충전중
- 파랑 LED: 완충됨

2. LED2: 블루투스 상태 표시등

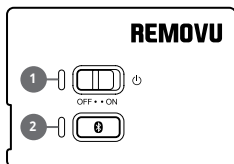
- 빨강 LED: 페어링 안됨
- 빨강, 파랑 LED 동시 점멸: 페어링 중
- 파랑 LED: 페어링 완료
- 빨강 + 파랑 LED: 소리 증폭 모드

3. 배터리 상태표시 (전원이 들어와 있을 경우에만 표시)

- 100% ~ 76%: 빨강 LED 점등 4회
- 75% ~ 51%: 빨강 LED 점등 3회
- 50% ~ 26%: 빨강 LED 점등 2회
- 25% ~ 5%: 빨강 LED 점등 1회
- 배터리 레벨 5% 이하: 빨강 LED 점등 10회

4. 사용중 배터리 상태 표시

- 배터리 레벨 5% 이하: 빨강 LED 점등 10회 후 기기 전원 Off

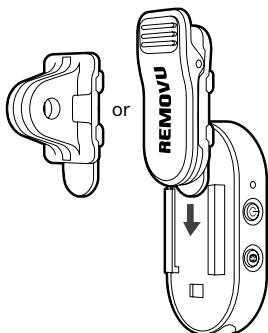


4. REMOVU M1+A1 사용방법

REMOVU M1

M1에 회전 클립 부착 방법

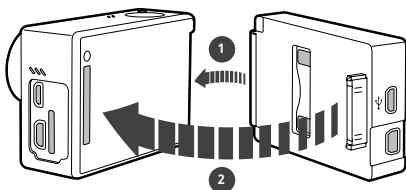
1. 클립을 M1의 뒷면의 거치대에 끼워 넣습니다.
2. 클립을 부착하고자 하는 곳에 부착합니다.
3. M1을 눕음하고자 하는 방향으로 각도를 변경할 수 있습니다.



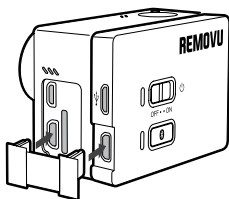
REMOVU A1

A1과 고프로 결합 방법

1. A1을 고프로 뒷면의 백팩을 장착하는 곳에 하기 그림과 같이 장착합니다.



2. 플러그가 끝까지 삽입되었는지 확인하세요.
3. 카메라 커넥터를 이용해 우측 그림과 같이 카메라와 A1을 연결합니다.
4. 분리시 같은 방법으로 분리합니다.



5. 페어링 방법

1. A1과 M1을 페어링 시
 - M1의 전원을 켜고 페어링 버튼을 약 2초간 누릅니다.
 - A1의 전원을 켜고 페어링 버튼을 약 2초간 누릅니다.
 - 페어링 성공시 파란 LED가 점등됩니다.
2. A1과 타사 블루투스 마이크(헤드셋)와 페어링 시
 - A1의 전원을 켜고 페어링 버튼을 약 2초간 누릅니다.
 - 연결하고자 하는 제품의 전원을 켜고 페어링 모드를 활성화 시킵니다.
 - 페어링 성공시 파란 LED가 점등됩니다.

6. 녹음 방법

1. 제품이 제대로 연결되었고 카메라 커넥터가 잘 장착되어 있을 시 고프로로 촬영을 하면 M1을 통해 사운드가 녹음됩니다.
2. 마이크 변경 시: M1을 사용하다가 고프로 내장마이크로 변경을 원할 시
 - A1의 페어링 버튼을 길게 눌러 페어링을 해제하거나 전원을 끄면 고프로 내장 마이크로 녹음이 됩니다. 다시 페어링 버튼을 길게 누르거나 전원을 키면 M1과 다시 페어링되어 M1으로 녹음이 가능합니다.
 - M1의 페어링 버튼을 길게 눌러 페어링을 해제하거나 전원을 끄면 고프로 내장 마이크로 녹음이 됩니다. 다시 페어링 버튼을 길게 누르거나 전원을 키면 M1과 다시 페어링되어 M1으로 녹음이 가능합니다.

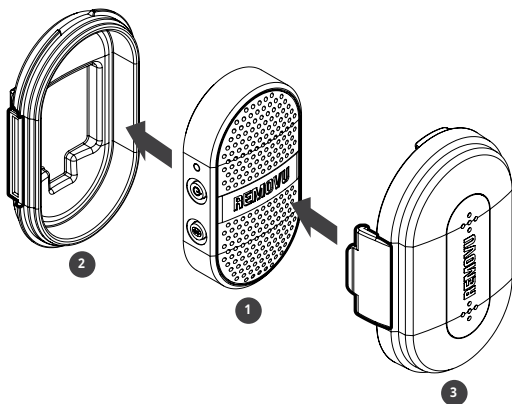
7. 오디오 증폭 모드

오디오 증폭모드는 M1에 방수하우징을 장착하고 사용 시 사용합니다. M1으로 부터 녹음되는 사운드를 증폭시킵니다.

활성화 방법

1. M1과 A1의 페어링 후 A1의 페어링버튼을 짧게 한차례 누릅니다.
2. LED 색상이 핑크색으로 변하면 증폭모드가 활성화 된 것입니다.
3. 비활성화는 페어링 버튼을 짧게 2회 누르면 비활성화 됩니다.

8. 방수하우징 사용법



방수하우징을 사용하면 물에 젖는 상황속에서도 녹음을 할 수 있습니다.

방수하우징 사용방법,

1. M1을 하우징 ②번 파트에 결합시킵니다.
2. 하우징의 상단 ③번 파트를 M1 위에 덮고 양쪽 고정장치에서 딸깍 소리가 날 때까지 힘을 가하여 고정시킵니다.
3. 오디오 증폭 모드를 활성화 시킨 후 녹음합니다.

방수하우징 탈착방법,

1. 양쪽 고정브라켓을 들어올려 뚜껑부분을 들어올립니다.
2. 뚜껑을 탈착시킵니다.
3. M1을 하우징에서 꺼냅니다.

This device complies with part 15 of the FCC Rules. Operation is subject to the following two conditions: (1) This device may not cause harmful interference, and (2) this device must accept any interference received, including interference that may cause undesired operation.

FCCID: 2AC73-M1 / 2AC73-A1

This equipment has been tested and found to comply with the limits for a class B digital device, pursuant to Part 15 of the FCC Rules. These limits are designed to provide reasonable protection against harmful interference in a residential installation. This equipment generates uses and can radiate radio frequency energy and, if not installed and used in accordance with the instructions, may cause harmful interference to radio communications. However, there is no guarantee that interference will not occur in a particular installation. If this equipment does cause harmful interference or television reception, which can be determined by turning the equipment off and on, the user is encouraged to try to correct the interference by one or more of the following measures:

- Reorient or relocate the receiving antenna.
- Increase the separation between the equipment and receiver.
- Connect the equipment into an outlet on a circuit different from that to which the receiver is connected.
- Consult the dealer or an experienced radio/TV technician for help.

WARNING: This equipment may generate or use radio frequency energy. Changes or modifications to this equipment may cause harmful interference unless the modifications are expressly approved in the instruction manual. The user could lose the authority to operate this equipment if an unauthorized change or modification is made.

Hereby, ESSEL-T CO.,LTD declares that this M1 & A1 is in compliance with the essential requirements and other relevant provisions of directive 1999/5/EC.)

“해당 무선설비는 전파통신 가능성이 있으므로 인명 안전과 관련된 서비스는 할 수 없음”

기자재 명칭/모델명

특정소출력 무선기기(무선데이터통신시스템용 무선기기)

Frequency : 2402 ~ 2480 MHz

A1: Bluetooth V4.0 / M1 : Bluetooth V3.0 (Not support LE)

Temperature : -20 ~ 50°C

Power : 3.8V

www.removu.com

REMOVU® by essel-t co., ltd.

Copyright 2015 essel-t co., ltd. All Rights Reserved. Patents Pending.

REMOVU® is a trademark of essel-t co., ltd.

registered in the U.S. and other countries.

GoPro® is a trademark of GoPro Inc.,
registered in the U.S. and other countries.

REMOVU®