

BT014-EN IM REV4 (420 x 70mm)

1、纸张：1 2 7 克双铜

2、1色(PANTONE BLACK C / 双面印刷)

3、按红色虚线折叠，要求折好后，两个渐变色的页面分别为表面和底面。



X-Band (OLED Display) - BT014
QUICK START GUIDE



Compatibility: Required iOS 6 or above
iPhone 6 Plus / 6 / 5s / 5c / 5 / 4s

iPod Touch 5

iPad Air 2 / Air
iPad mini 3 / mini 2 / mini
iPad 3 / 4



Compatibility: Required Android 4.3
or above + Bluetooth 4.0

SAMSUNG :
Galaxy S5 / S4

Galaxy Note III / II

HUAWEI :
Honor 3X (Android 4.4.2 +) / 3C (3G
Android 4.3 +) / 3C (4G) / 6

HUAWEI Ascend P7 /
P6 (Android 4.4.2 +)

HTC :
HTC One (M8) / One (4.3 +)

※ Above model list are renewal
before April 2015.

1 Features



Steps



Calories



Target



Activity time



Distance



Exercise



Sleep



Silent Alarm



Caller ID



Notifications



Tracker



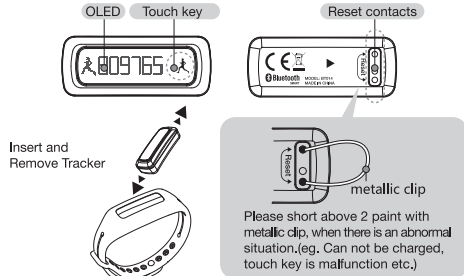
Wristband



USB Charger

※ To charge the battery of device first before using it at the first time.

2 Operations

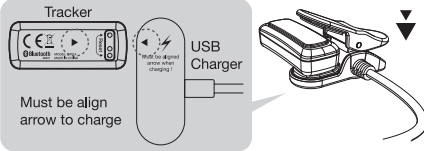


3 Low Battery Indicator

- When the battery is low, the low battery indicator will be shown on the clock display. Charged the tracker in order to avoid lost data.



4 Charging the battery



5 Initialize the Device

-Under the idle mode, press and hold touch key for 3S or above. The display will show the “Let's Go” and then it will entry to the activity mode.

Let's Go

6 Activity mode

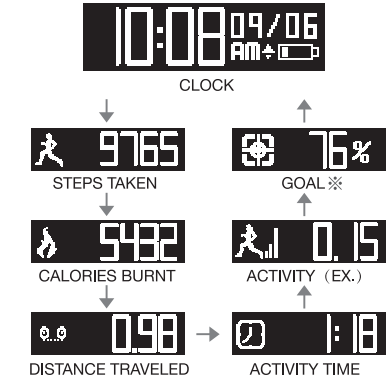
-Measures daily steps taken, distance traveled, active time, calories burnt and activity(Ex.).
-Step, Calories, Active time, Ex., Distance traveled, are recorded in summary in 14 days.

Read more >>>



正面

7 Display mode sequence



※ Daily goal default target is nil, goal mode is skipped;
Once target is set by APP, the goal mode will be enable.

8 Sleep mode



※ If sleep duration reaches 24 hours, tracker will automatically exit sleep mode.

-In activity mode (except clock mode), press and hold key>3s to enter the sleep mode, and sleep timer will start to count when “Good Night” is shown.

-Press the key once to view clock mode.

-Press the key twice to view sleep timer.

-When wake up, press and hold the key>3s to exit sleep mode.It will display “Morning” and then return to activity mode.※

9 Silent Alarm

-For the sleep tracker mode, it can be set the wake up alarm (silent alarm) by APP. The APP sent the alarm time to the BLE.

-When the alarm is set, a alarm bell is shown on the screen.



-When the alarm goes off, the tracker will vibrate for 3 seconds, and the display will show every 2 seconds for 10 seconds.

-During alarming, press key stop the alarm (No more vibrate until next day)

10 Bluetooth Connection Mode

In order to synchronize the data between the device and smart phone, it is recommended to pair the device with smart phone first.

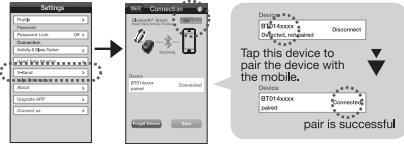
1). Download and install [MyWay Fit] , open the APP:



2). On the Homepage, click the bottom left corner icon to go to the settings page in order to pair the device.



3). On the settings page, tap the **X-band** in the Connection field to go to the **X-band connection** page.
4). On the connection page, swipe the bluetooth slide to [on].
5). On the device, press the key to turn on the display, it will simultaneously turn on bluetooth connection.
6). If the APP finds the device, it will show on the APP. Tap this device to pair the device with the mobile.
7). If pair is successful, it will show status as “Connected” on the APP.



※ “Caller ID / notifications” request long time opening of BLE, which is power-consuming. It is suggested to turn off BLE to save power when above function is not necessary.

11 Data Synchronization

1.) When the device is paired, pressing the key on the device will automatically pair the device with the APP.
2.)After connection, the refresh icon in the top right corner will change from grey to red. Tap the refresh icon to synchronize the data between the device and APP.

12 Target goal

-Set the target on APP: Target source Step, Calories, Ex., Activity time.

-Press the key to view goal status.



-When daily goal is achieved, the vibration and Goal achieve celebration message flashes for 10 seconds to celebrate you to achieve the goal.



13 Caller ID & Notifications

-When the Bluetooth is connected, it can do an incoming call/ message reminder.

-If the incoming call / message arrives, it will vibrate and display incoming call or message on the display for 3 seconds.



-The character will be scrolling from right to left when name or phone nos. cannot be shown for whole display.

FCC Statement
This equipment has been tested and found to comply with the limits for a Class B digital device, pursuant to part 15 of the FCC Rules. These limits are designed to provide reasonable protection against harmful interference in a residential installation. This equipment generates uses and can radiate radio frequency energy and, if not installed and used in accordance with the instructions, may cause harmful interference to radio communications. However, there is no guarantee that interference will not occur in a particular installation. If this equipment does cause harmful interference to radio or television reception, which can be determined by turning the equipment off and on, the user is encouraged to try to correct the interference by one or more of the following measures:
—Reorient or relocate the receiving antenna.
—Increase the separation between the equipment and receiver.
—Connect the equipment into an outlet on a circuit different from that to which the receiver is connected.
—Consult the dealer or an experienced radio/TV technician for help.
This device complies with FCC radiation exposure limits set forth for an uncontrolled environment. This device complies with Part 15 of the FCC Rules. Operation is subject to the following two conditions: (1) this device may not cause harmful interference, and (2) this device must accept any interference received, including interference that may cause undesired operation.
Caution!
Any changes or modifications not expressly approved by the party responsible for compliance could void the user's authority to operate the equipment.

Canada Statement
This device complies with Industry Canada's licence-exempt RSSs. Operation is subject to the following two conditions:
(1) This device may not cause interference; and
(2) This device must accept any interference, including interference that may cause undesired operation of the device.
Le présent appareil est conforme aux CNR d'Industrie Canada applicables aux appareils radio exempts de licence. L'exploitation est autorisée aux deux conditions suivantes:
(1) l'appareil ne doit pas produire de brouillage;
(2) l'utilisateur de l'appareil doit accepter tout brouillage radioélectrique subi, même si le brouillage est susceptible d'en compromettre le fonctionnement.
The device meets the exemption from the routine evaluation limits in section 2.5 of RSS 102 and compliance with RSS-102 RF exposure, users can obtain Canadian information on RF exposure and compliance.
Le dispositif rencontre l'exemption des limites courantes d'évaluation dans la section 2.5 de RSS 102 et la conformité à l'exposition de RSS-102 rf, utilisateurs peut obtenir l'information canadienne sur l'exposition et la conformité de rf.